

SB97
下層



SB99





7



8



16



9



17



5



11



1



3



2



6



4



13



19

SB99

SB100

SB100



15



16



22

SB101



4



8



5



6



1



2



7



11



10



12



9

SB111



SB111



SB121



SB124





3



12



9



10



11

SB124



1



2



4



3



5



6



7



8



8



10



12



13



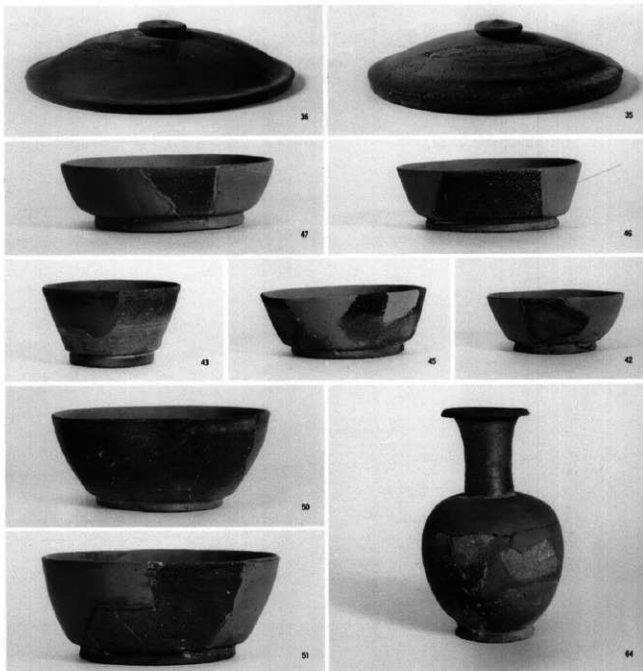
15



19

SB126

SB126



SB130



SB136



2



4



1



6



9



12



3



13



17



18



19



21

SB143



20



21



27



28



30



31



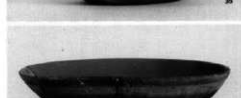
32



34



35



37



42



46



41



40



50



49

SB143



14



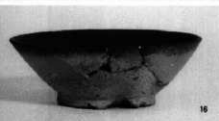
13



15



16



17



18



1



2



3



6

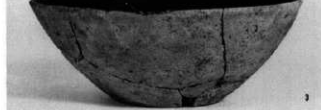


54



55

SB148



SB152



区画溝]
(南北溝)

42



6



49



21



76



37



14



28



11



51



12



13



20



77

区西溝Ⅰ
(南北溝)



15



81



32



4



5

区西溝Ⅰ
(東西溝)



107



112



96



91



103



90



118



117



110



124



4



5



9



12



17



41



42



23



43



7



1



2



4



3



5



6



6



7

区画溝Ⅱ

区画溝Ⅲ

SD108

1区



SD108

3区



176



172



167



170



173



249



172



186



189



188



325



204



293



179



282



180



294



287



316



288

SD108

3区



162



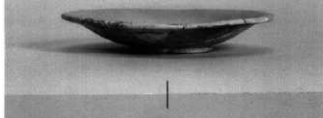
208



205



209



301



312



161



164



213



182



163



188



223



185



184



190

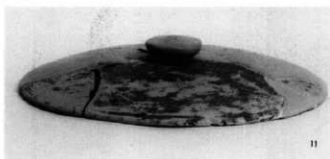
SK580



ST111



SX30



11



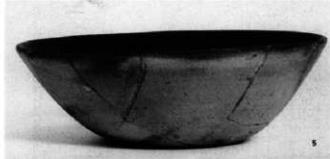
3



12



4



5



6

SX30
1K

14



17



27



21



20



42



35



43



36



47



53

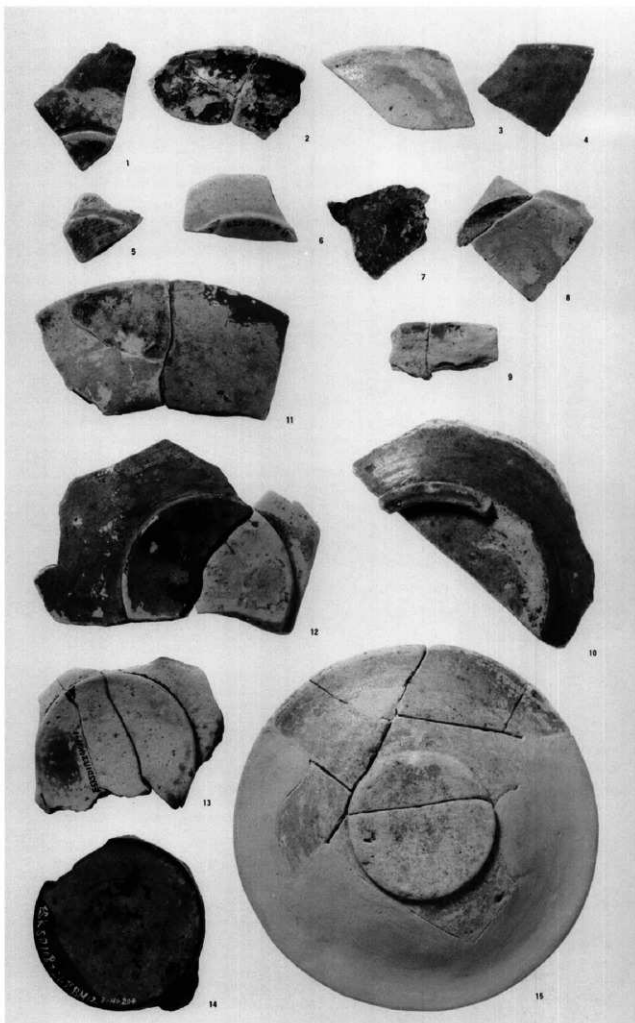


45

緑釉陶器

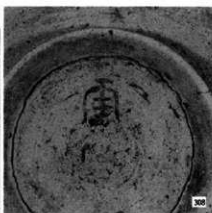
(1:1.5)

- 1: ⅡBQ13
(トレンチ出土-27)
 - 2: SD108 (SD108-302)
 - 3: 区画溝Ⅰ南北溝
(区画溝Ⅰ-79)
 - 4: 同 (区画溝Ⅰ-80)
 - 5: SB143 (SB143-53)
 - 6: SD137 (SD137-47)
 - 7: ⅡDQ20
(トレンチ出土-26)
 - 8: SB97-100 (SB100-18)
 - 9-10: ⅡFQ8
(トレンチ出土-25)
 - 11-12: SK460-区画溝Ⅰ
(区画溝Ⅰ-17)
 - 13: 区画溝Ⅰ南北溝
(区画溝Ⅰ-16)
 - 14: SD108 3区(SD108-303)
 - 15: SD108 3区(SD108-301)
- () 内は図版番号





313



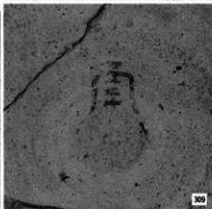
308



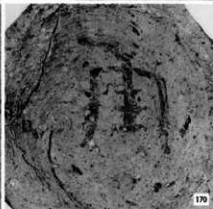
175



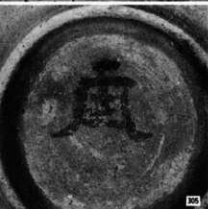
319



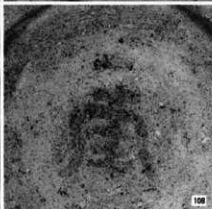
309



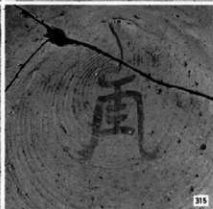
170



305



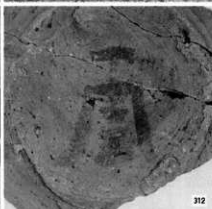
108



315



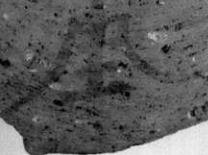
185



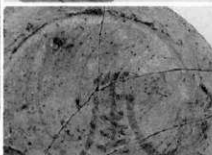
312



456



65



65



209

墨書土器

313: SD108, 3区

308: SD108, 3区

175: SB143

319: SD108, 3区

309: SD108, 3区

170: SB143

305: SD108, 3区

108: SB97

315: SD108, 3区

185: SB143

312: SD108, 3区

456: SX30

65: SB92

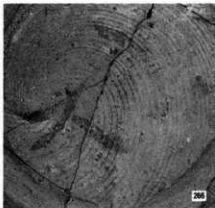
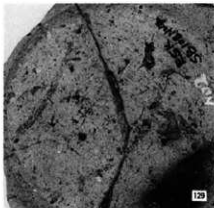
209: 区瀬溝 I

墨書土器

129 : SD108, 1区

251 : SD108, 1区

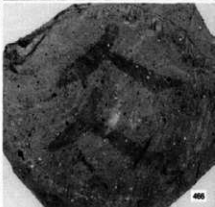
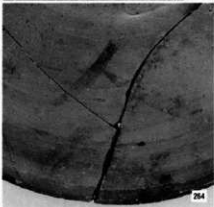
266 : SD108, 1区



261 : SD108, 1区

264 : SD108, 1区

466 : 透構外



35 : SB74

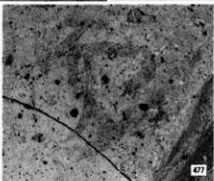
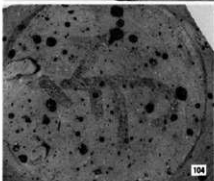
478 : 透構外



104 : SB97

477 : 透構外

451 : SX30

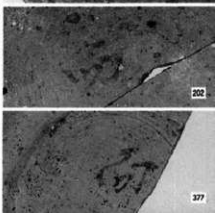
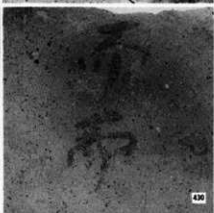
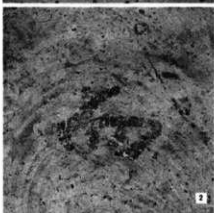


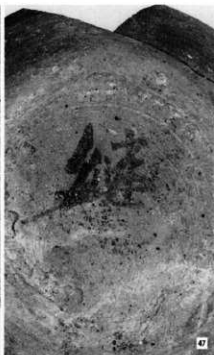
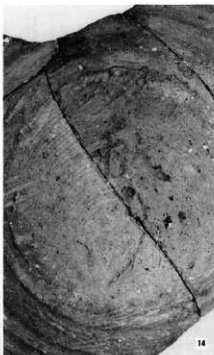
2 : SB5

430 : SX30

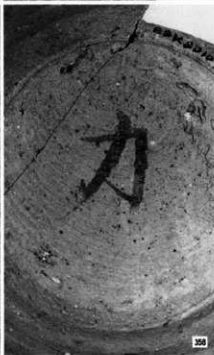
202 : 区(南溝1)

377 : SD117

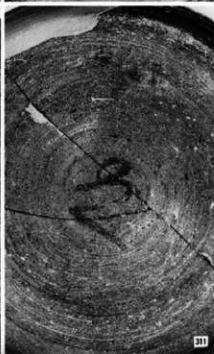
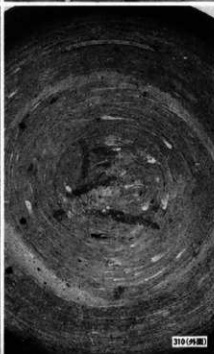




黒書土器
7: SB21
14: SB51
47: SB90



87: SB96
358: SD108, 4区
366: SD108, 4区



310: SD108, 3区
311: SD108, 3区

墨書土器

433 : SX30

415 : SX30

416 : SX30



433



415



416

330 : SD108, 3区

50 : SB91

227 : 区画溝目



330



50

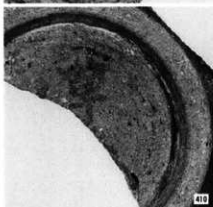


227

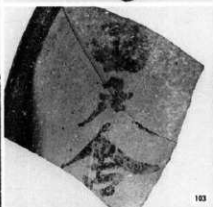
410 : SK534

103 : SB97

361 : SD108, 4区



410



103

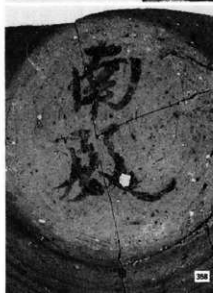


361

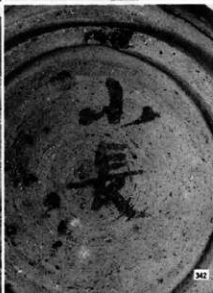
358 : SD108, 4区

342 : SD108, 3区

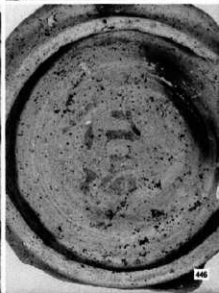
446 : SX30



358



342



446

陶硯

493 : SB127

(1 : 2)



493

494 : 区画溝 1

(1 : 2)



494

495 : SB91・区画溝Ⅱ

(1 : 2)



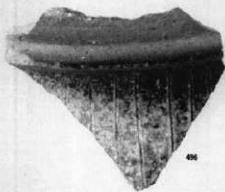
495

496 : 区画溝Ⅲ

497 : 溝址群Ⅲ

498 : SN 1

(1 : 1)



496



497



498

鉄製品(1:2)

鎌・鋤・鍬先

(1:2)

1:SK609

3:SK531

4:SB97

67:SB12

68:SB11



刀子

5:SB119

6:SB76

7:SB143

8:SB115

9:SX30

10:SB66

12:SB143

13:SB89

14:SB135

16:SB129

17:SB 2

18:SB66

19:SB61

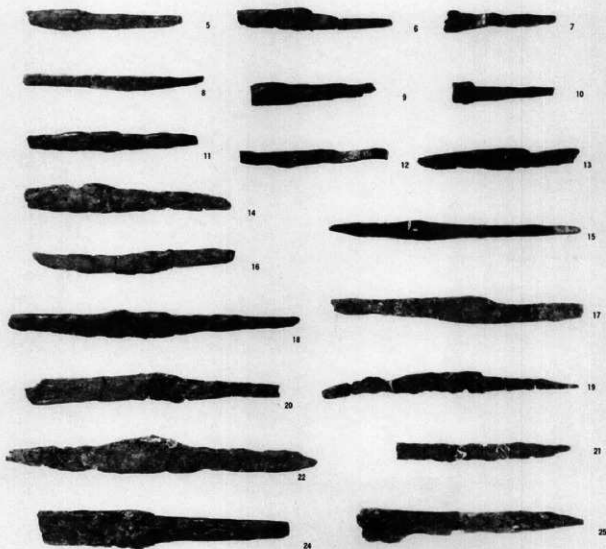
20:SD108

21:SB43

22:SB12

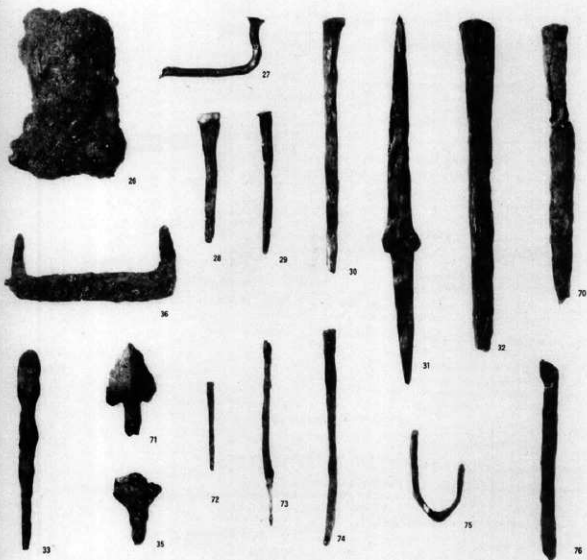
24:SD137

25:SB 6



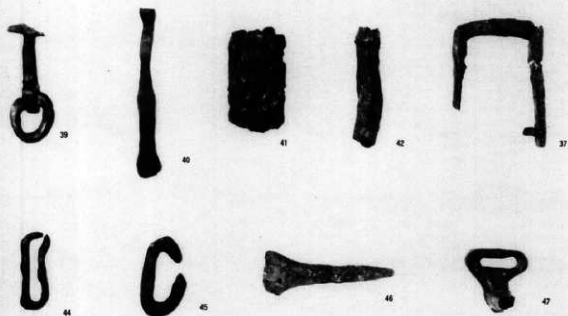
铁制品 (1:2)

- 斧·釘·鏃
 26: SB69
 27: SB76
 28: SB118
 29: SB143
 30: SB89
 31: SB55
 32: SD 9
 33: SB29
 35: SB85
 70: 長岡溝Ⅰ
 71: 道橋外 (IFQ01)
 72: SK609
 73: SB143
 74: SB143
 75: SB143
 76: SB143



金具・馬具

- 37: SK626
 39: SB93
 40: SB143
 41: SB143
 42: SB11
 44: 溝地群Ⅲ
 45: SX30
 46: SB29
 47: SB129



銅製品・錢貨

(1:1)

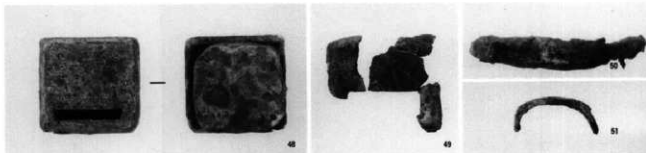
帯金具・金具

48: SD109

49: SB25

50: 遺構外

51: 遺構外 (II FV25)



容器類

52: 区画溝 I

53: 区画溝 I

54: SB133

55: 遺構外 (II DQ23)

77: 遺構外 (II DQ23)

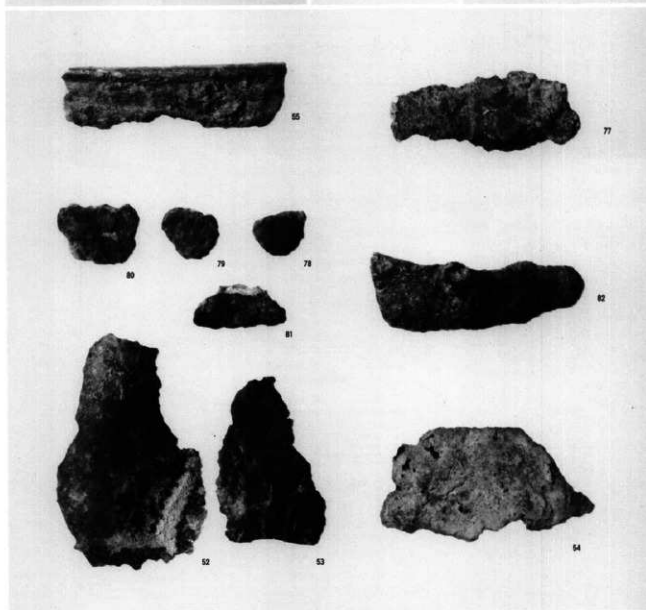
78: 遺構外 (II DQ23)

79: SK623

80: ST129

81: SB99

82: SK565



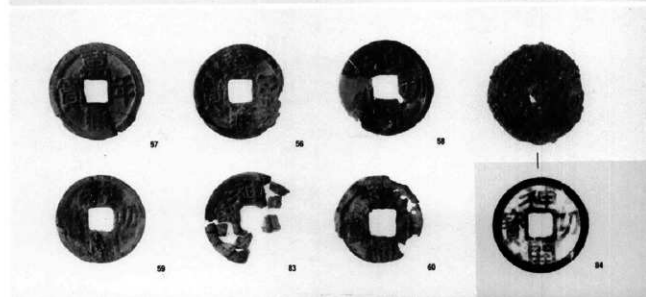
錢貨

57~59・83

: SK490

60: SK554

84: SD108

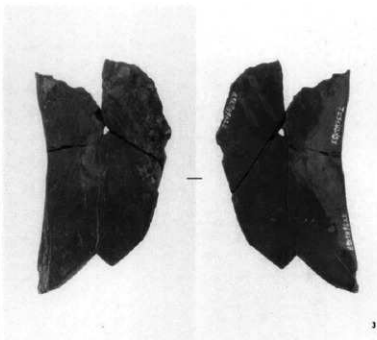
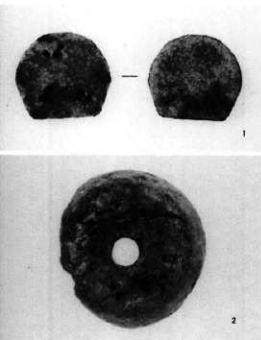


石帯・紡錘車・砥石

1 : 遺構外 (1 : 1)

2 : SB34 (1 : 1)

3 : SB96 (1 : 2)



砥石・軽石 (1 : 2)

4 : SB 6

5 : SB25

6 : SB 2

7 : SB76

8 : SB72

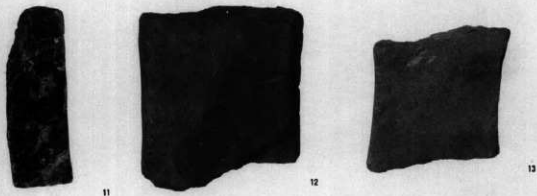
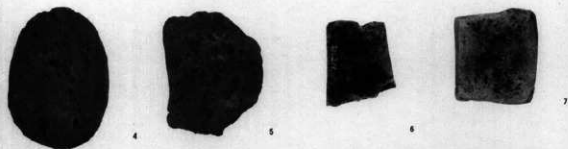
9 : SB68

10 : SB107

11 : SB19

12 : SD106

13 : SB118



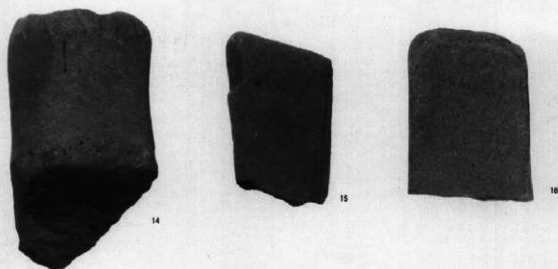
砥石

(1 : 3)

14 : SB52

15 : SB54

16 : SB64



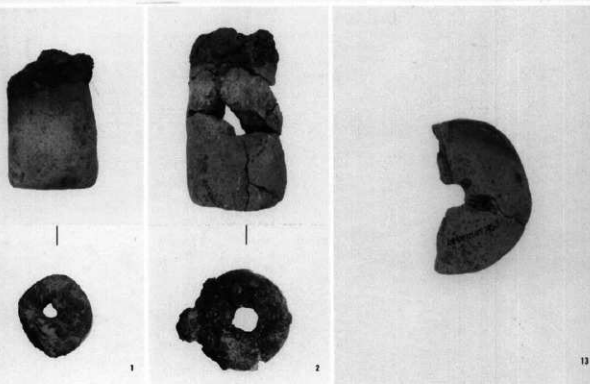
羽口・紡錘車

(1 : 3)

1 : SB97

2 : 遺構外

13 : SB126(1 : 2)



羽口 (1 : 3)

3 : SB115

5 : SB121

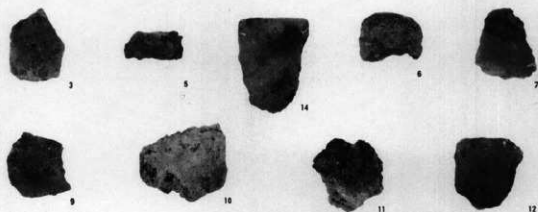
6 : SB135

7 : SB152

9 : 区画溝内

10-12 : 遺構外

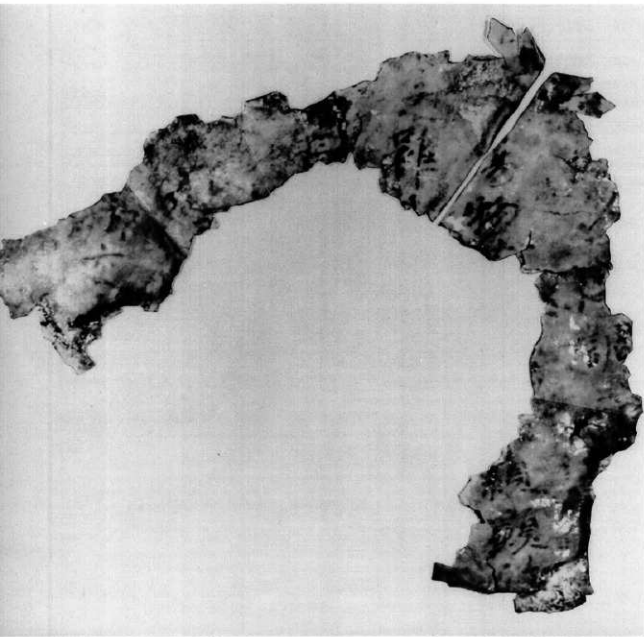
14 : SB123



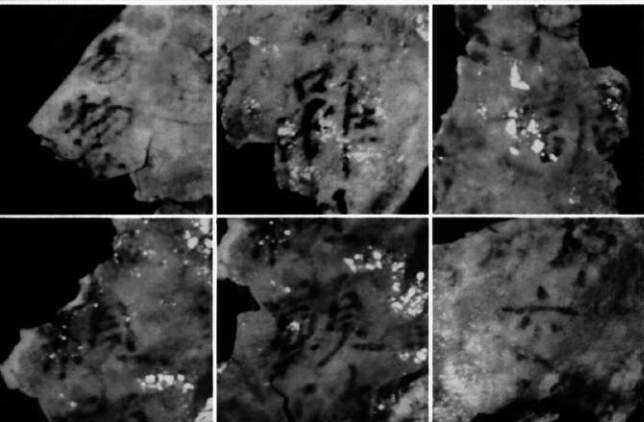
付編1

漆紙文書

(撮影 平山南、実大書院、
赤外線写真合成)



同 (拡大書体 5)



左:「易物」
中:「羅」
右:「調」

左:「口」
中:「羅」
右:「交」

(財)長野県埋蔵文化財センター発掘調査報告書 6

中央自動車道長野線埋蔵文化財発掘調査報告書 6

—松本市内 その3—

下神遺跡

図版編

発行 平成2年3月31日発行

発行者 日本道路公団名古屋建設局

長野県教育委員会

(財)長野県埋蔵文化財センター

印刷 藤原印刷株式会社

