

SB97
下層



SB99





7



8



16



9



17



5



11



1



3



2



6



4



13



19

SB99

SB100

SB100



15



16



22

SB101



4



8



5



6



1



2



7



11



10

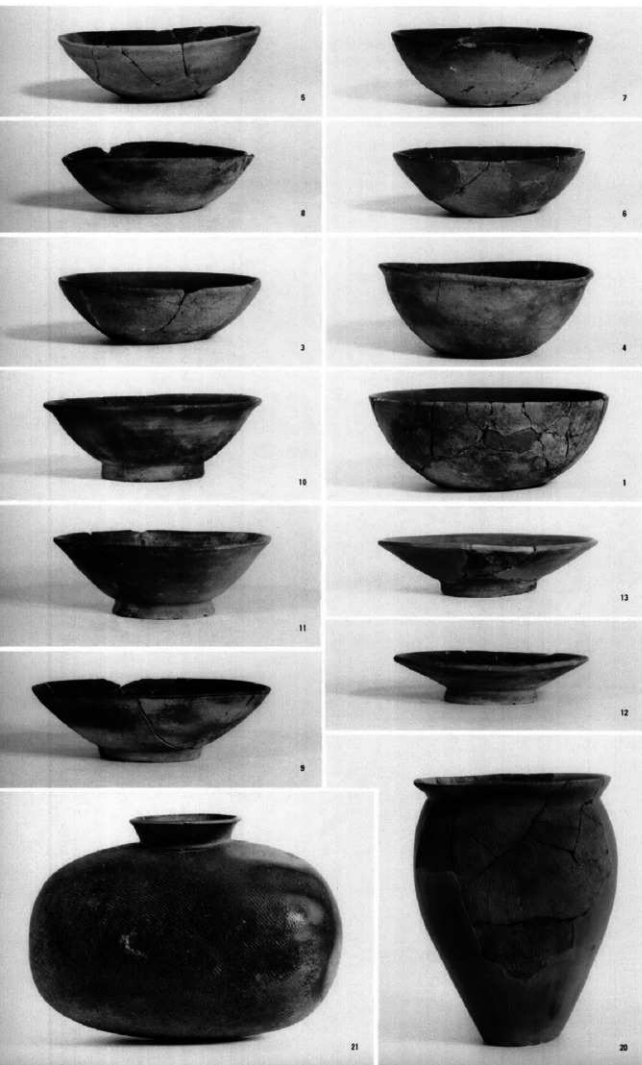


12



9

SB111



SB111



17



18



19

SB121



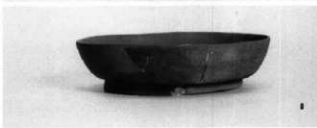
2



15



4



8



3



10



5



11



1

SB124



2



13



3



12



1



4



5



7



8



12



15



9



10



11



2



3



6



9



10



13

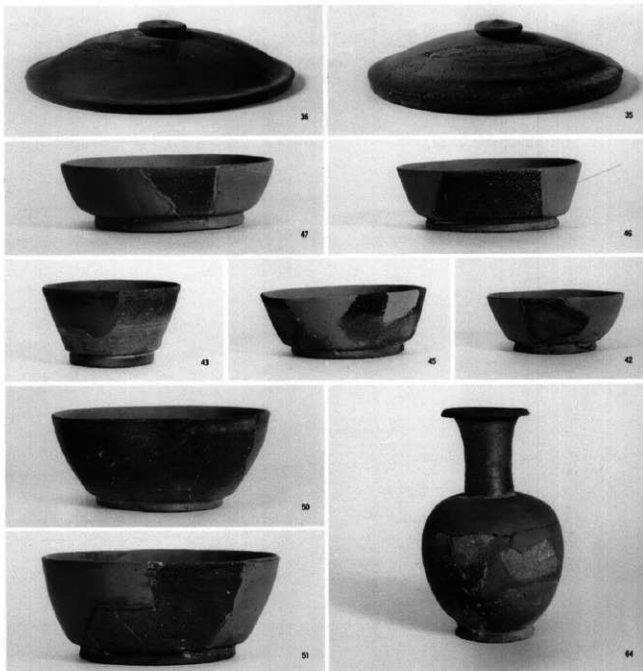


19

SB124

SB126

SB126



SB130



SB136



2



4



1



6



9



12



3



13



17



18



19



21

SB143



SB143



14



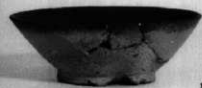
13



15



16



17



18



1



2



3



6



54



55

SB148



SB152



区画溝]
(南北溝)

42



6



49



21



76



37



14



28



11



51



12



13



20



77

区西溝Ⅰ
(南北溝)



15



81



32



4



5

区西溝Ⅰ
(東西溝)



107



112



96



91



103



90



118



117



110



124



4



5



9



12



17



41



42



23



43



7



1



2



4



3



5



6



6



7

区画溝Ⅱ

区画溝Ⅲ

SD108

1区



SD108

3区



176



172



167



170



173



249



172



186



189



188



325



204



293



179



282



180



294



287



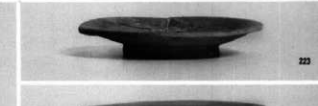
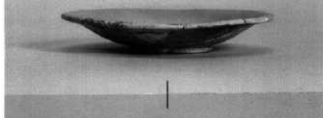
316



288

SD108

3区



SK580

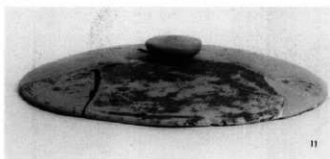


ST111



1

SX30



11



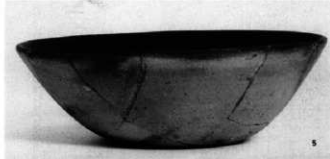
3



12



4



5



6

SX30
1K

14



17



27



21



20



42



35



43



36



47



53

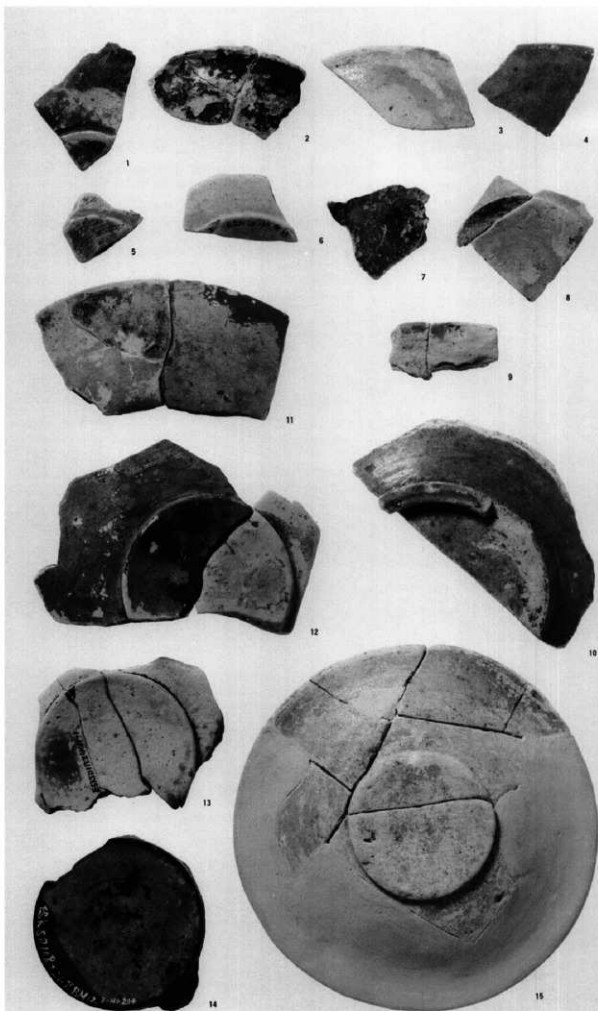


45

緑釉陶器

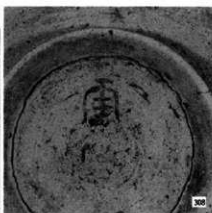
(1:1.5)

- 1: ⅡBQ13
(トレンチ出土-27)
 - 2: SD108 (SD108-302)
 - 3: 区画溝Ⅰ南北溝
(区画溝Ⅰ-79)
 - 4: 同 (区画溝Ⅰ-80)
 - 5: SB143 (SB143-53)
 - 6: SD137 (SD137-47)
 - 7: ⅡDQ20
(トレンチ出土-26)
 - 8: SB97-100 (SB100-18)
 - 9-10: ⅡFQ8
(トレンチ出土-25)
 - 11-12: SK460-区画溝Ⅰ
(区画溝Ⅰ-17)
 - 13: 区画溝Ⅰ南北溝
(区画溝Ⅰ-16)
 - 14: SD108 3区(SD108-303)
 - 15: SD108 3区(SD108-301)
- () 内は図版番号





313



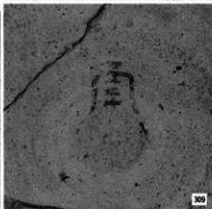
308



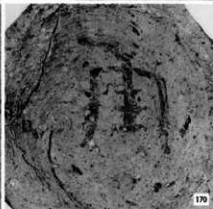
175



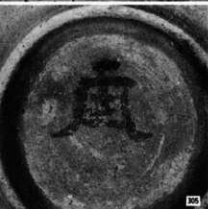
319



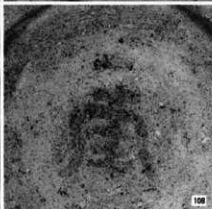
309



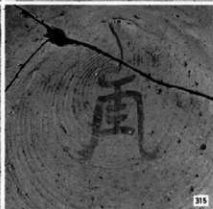
170



305



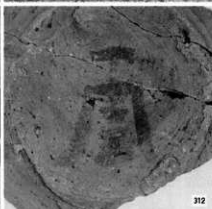
108



315



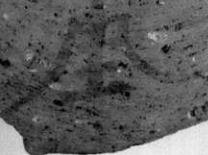
185



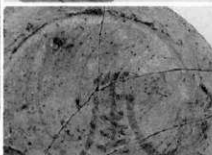
312



456



65



65



209

墨書土器

313: SD108, 3区

308: SD108, 3区

175: SB143

319: SD108, 3区

309: SD108, 3区

170: SB143

305: SD108, 3区

108: SB97

315: SD108, 3区

185: SB143

312: SD108, 3区

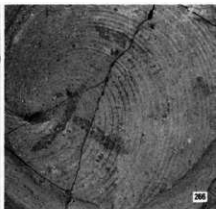
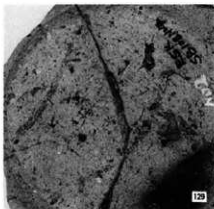
456: SX30

65: SB92

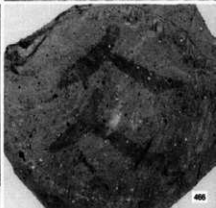
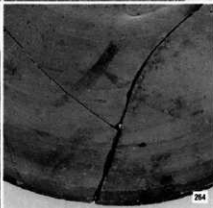
209: 区瀬溝 I

墨書土器

129 : SD108, 1区
 251 : SD108, 1区
 266 : SD108, 1区



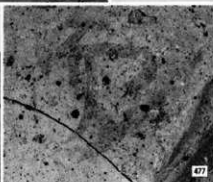
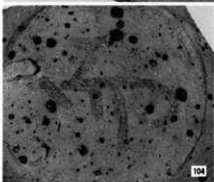
261 : SD108, 1区
 264 : SD108, 1区
 466 : 遺構外



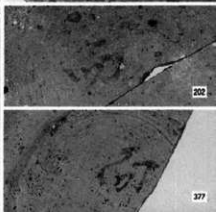
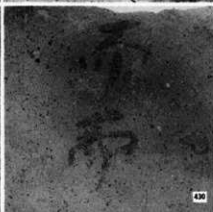
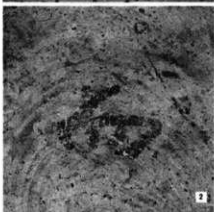
35 : SB74
 478 : 遺構外

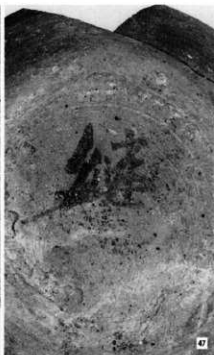
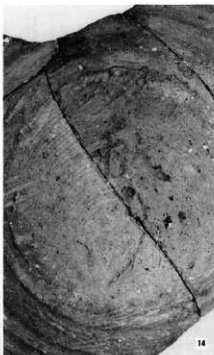


104 : SB97
 477 : 遺構外
 451 : SX30

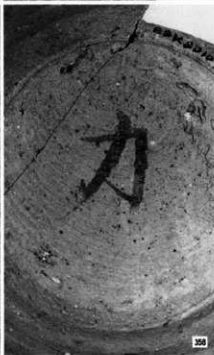


2 : SB5
 430 : SX30
 202 : 区(南溝1)
 377 : SD117

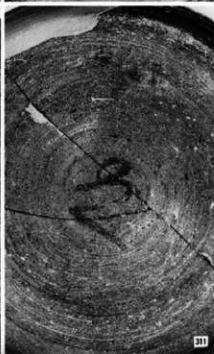
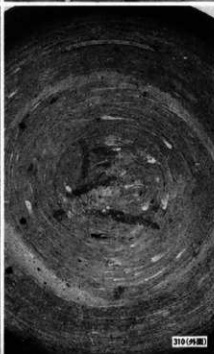




黒書土器
7: SB21
14: SB51
47: SB90



87: SB96
358: SD108, 4区
366: SD108, 4区



310: SD108, 3区
311: SD108, 3区

墨書土器

433 : SX30

415 : SX30

416 : SX30



433



415



416

330 : SD108, 3区

50 : SB91

227 : 区画溝目



330



50

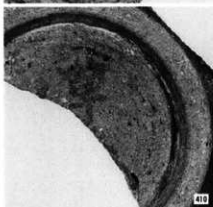


227

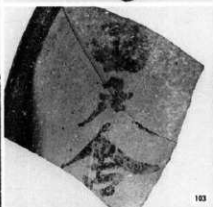
410 : SK534

103 : SB97

361 : SD108, 4区



410



103

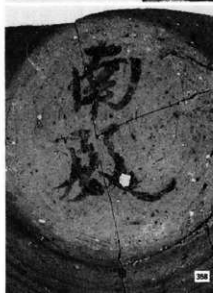


361

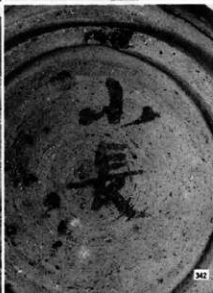
358 : SD108, 4区

342 : SD108, 3区

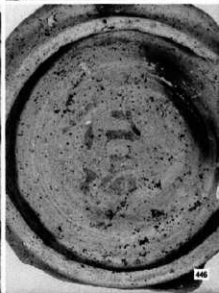
446 : SX30



358



342



446

陶硯

493 : SB127

(1 : 2)



493

494 : 区画溝 1

(1 : 2)



494

495 : SB91・区画溝Ⅱ

(1 : 2)



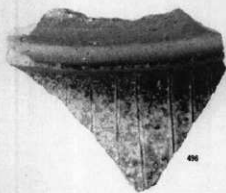
495

496 : 区画溝Ⅲ

497 : 溝址群Ⅲ

498 : SN 1

(1 : 1)



496



497



498

鉄製品(1:2)

鎌・鋤・鍬先

(1:2)

1:SK609

3:SK531

4:SB97

67:SB12

68:SB11



刀子

5:SB119

6:SB76

7:SB143

8:SB115

9:SX30

10:SB66

12:SB143

13:SB89

14:SB135

16:SB129

17:SB 2

18:SB66

19:SB61

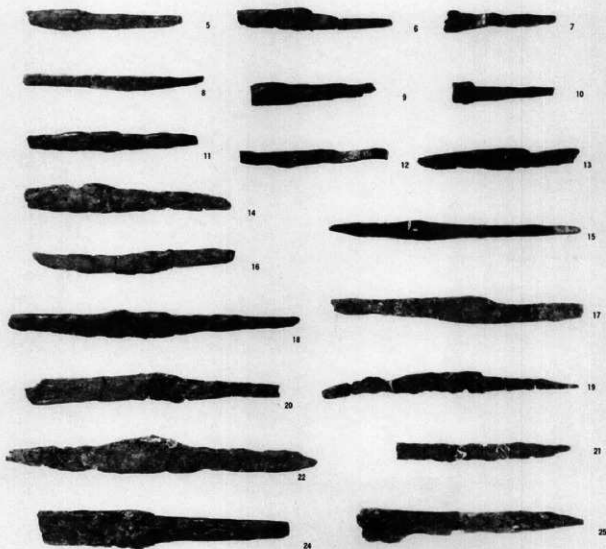
20:SD108

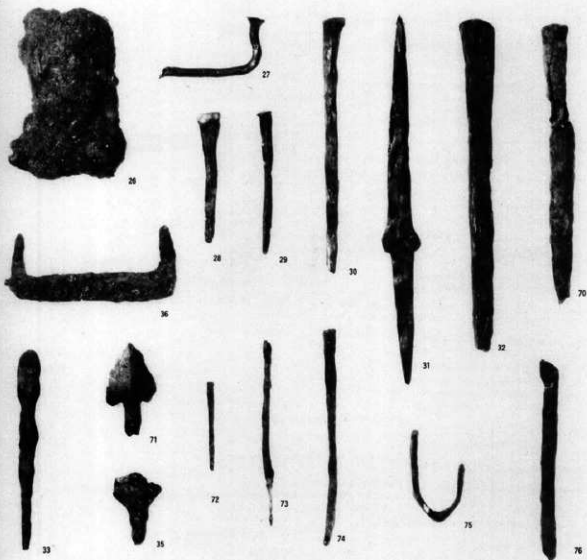
21:SB43

22:SB12

24:SD137

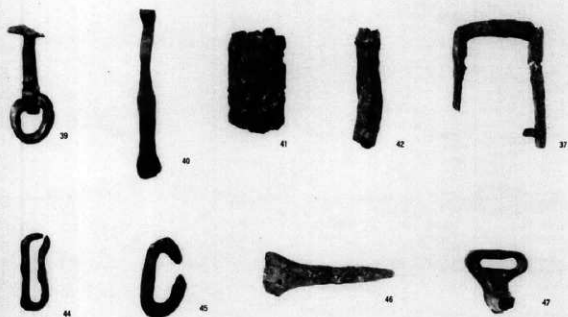
25:SB 6





鉄製品 (1 : 2)

- 斧・釘・鏃
 26 : SB69
 27 : SB76
 28 : SB118
 29 : SB143
 30 : SB89
 31 : SB55
 32 : SD 9
 33 : SB29
 34 : SB85
 70 : 長崎県 I
 71 : 道橋外 (II FQ01)
 72 : SK609
 73 : SB143
 74 : SB143
 75 : SB143
 76 : SB143



金具・馬具

- 37 : SK626
 39 : SB993
 40 : SB143
 41 : SB143
 42 : SB11
 44 : 漢地群 III
 45 : SX30
 46 : SB29
 47 : SB129

銅製品・錢貨

(1:1)

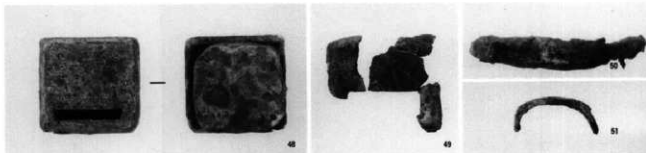
帯金具・金具

48: SD109

49: SB25

50: 遺構外

51: 遺構外 (II FV25)



容器類

52: 区画溝 I

53: 区画溝 I

54: SB133

55: 遺構外 (II DQ23)

77: 遺構外 (II DQ23)

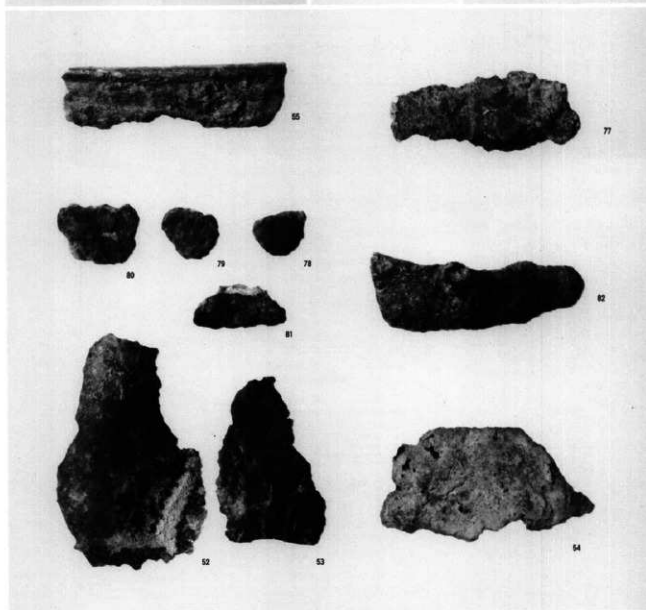
78: 遺構外 (II DQ23)

79: SK623

80: ST129

81: SB99

82: SK565



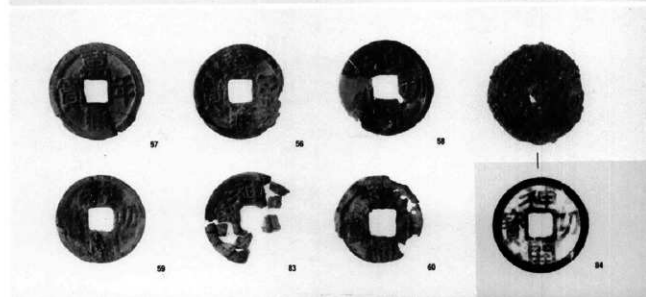
錢貨

57~59・83

: SK490

60: SK554

84: SD108

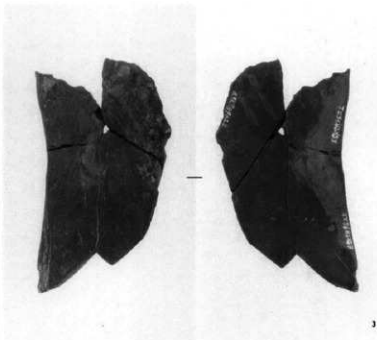
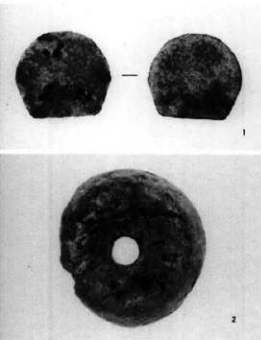


石帯・紡錘車・砥石

1 : 遺構外 (1 : 1)

2 : SB34 (1 : 1)

3 : SB96 (1 : 2)



砥石・軽石 (1 : 2)

4 : SB 6

5 : SB25

6 : SB 2

7 : SB76

8 : SB72

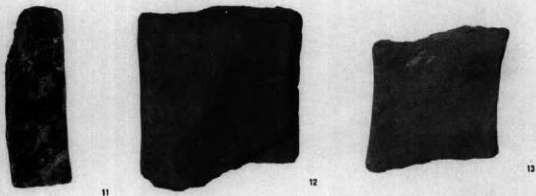
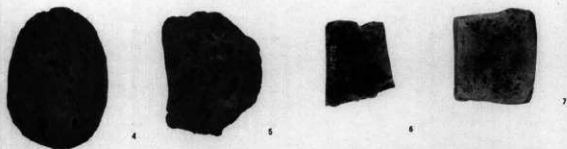
9 : SB68

10 : SB107

11 : SB19

12 : SD106

13 : SB118



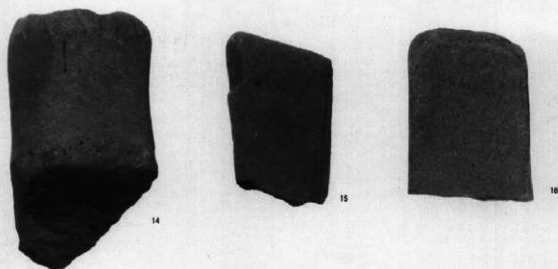
砥石

(1 : 3)

14 : SB52

15 : SB54

16 : SB64



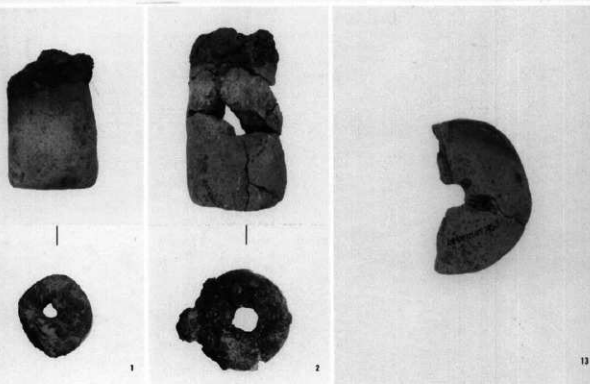
羽口・紡錘車

(1 : 3)

1 : SB97

2 : 遺構外

13 : SB126(1 : 2)



羽口 (1 : 3)

3 : SB115

5 : SB121

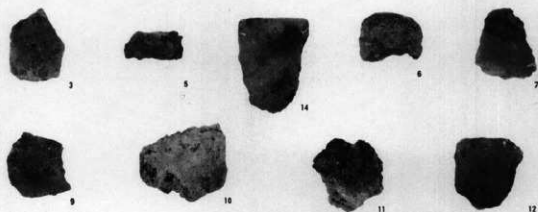
6 : SB135

7 : SB152

9 : 区画溝直

10-12 : 遺構外

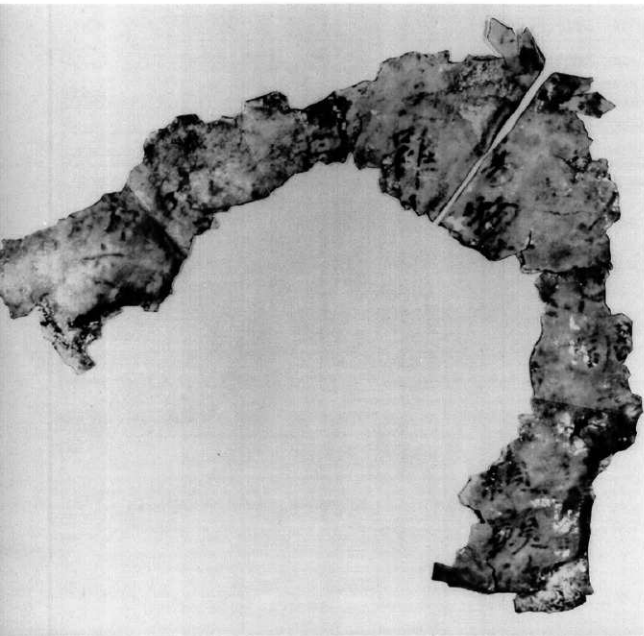
14 : SB123



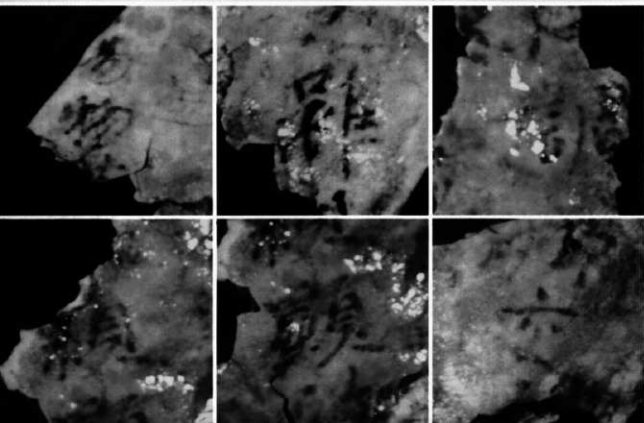
付編 1

漆紙文書

(撮影 平山由、実大書院、
赤外線写真合成)



同 (拡大書体 5)



左:「易物」
中:「羅」
右:「調」

左:「口」
中:「羅」
右:「交」

(財)長野県埋蔵文化財センター発掘調査報告書 6

中央自動車道長野線埋蔵文化財発掘調査報告書 6

一松本市内 その3一

下神遺跡

図版編

発行 平成2年3月31日発行

発行者 日本道路公団名古屋建設局

長野県教育委員会

(財)長野県埋蔵文化財センター

印刷 藤原印刷株式会社

