

S K8189出
土の河原石
(1:3)



切石 1

1 SB7053

(1 : 3)



2 SB7053

(1 : 3)



古代カマド石 2

切石 2

4 S B 7036

(1 : 3)



3 S B 7036

(1 : 3)



S B 7200

(1 : 3)



S B 7203

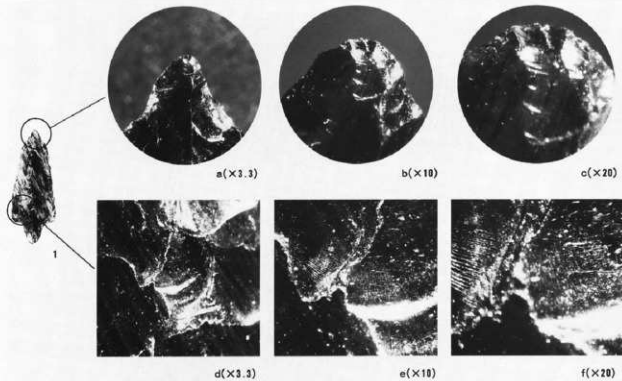
(1 : 3)



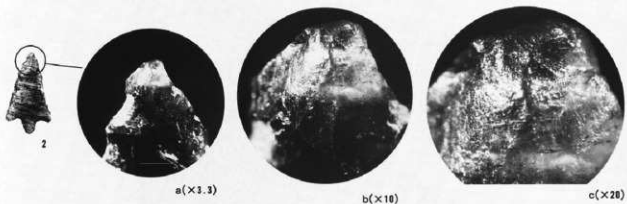
弥生時代石器40
使用痕写真1

石鏃

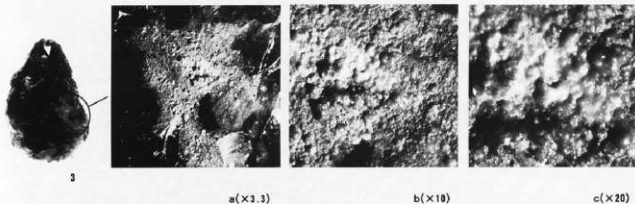
- 1 S B 7499
圖版228-18
(衝擊剝離痕?)
(裝着痕?)



- 2 S B 7279
圖版228-20
(摩耗痕)

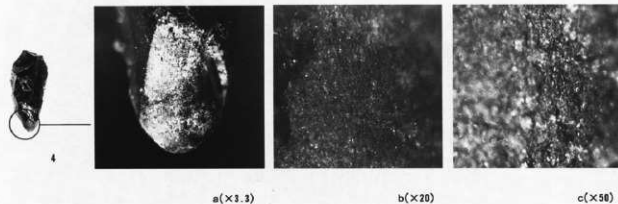


- 3 S B 7372
圖版228-3
(附着物・漆)



石鏃

- 4 S B 7268
圖版229-43
(摩耗痕)



弥生時代石器41
使用痕写真2

打製石斧

1 SD6023

図版230-4

2 1-2区

第3枚出面

図版231-14

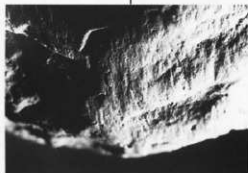
(摩耗・線状痕)



1



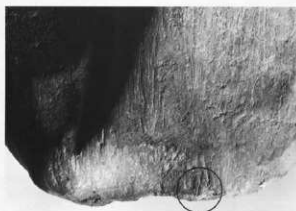
(×1.5)



(×3.3)



2



(×1.5)



(×3.3)

磨製石斧

- 1 SK8167
图版254-4
- 2 SK8167
图版256-10
(摩耗・線状痕)



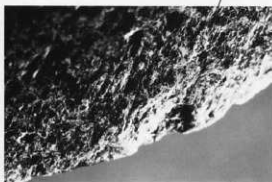
1



a(x1.0)



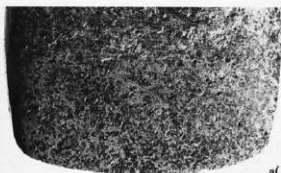
b(x1.5)



c(x3.3)



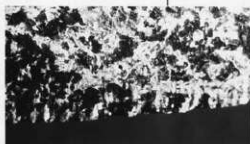
2



a(x1.0)



b(x1.5)

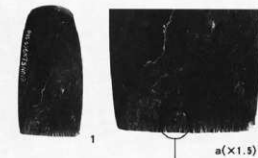
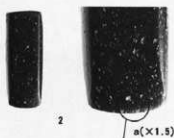
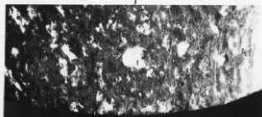


c(x3.3)

弥生時代石器43
使用痕写真4

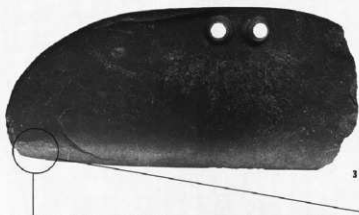
磨製石斧

- 1 S D 6007
图版256-13
2 S B 7268
图版256-16
(摩耗・線状痕)

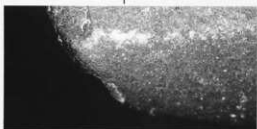
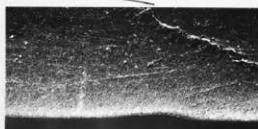
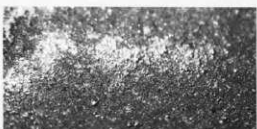
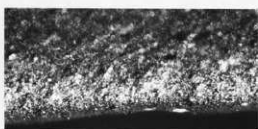
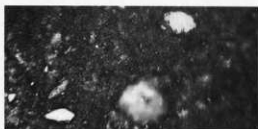
a($\times 1.5$)a($\times 1.5$)b($\times 3.3$)b($\times 3.3$)

磨製石包丁

- 3 2-3区
图版253-6
(光沢痕)

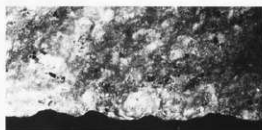


3

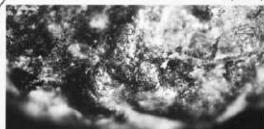
a($\times 3.3$)d($\times 3.3$)b($\times 10$)e($\times 20$)c($\times 40$)f($\times 50$)

刃器

- 1 S K 6051
図版247-26
2 S B 7268
図版247-28
(光沢痕)



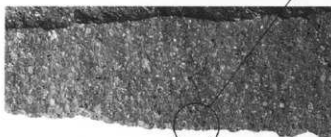
b(x1.3)



c(x20)



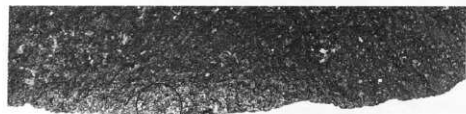
d(x25)



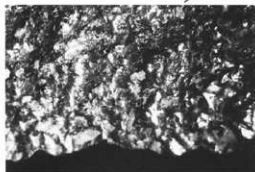
a(x1.0)



2



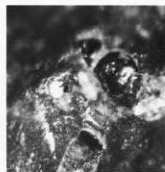
a(x1.0)



b(x1.3)



c(x10)



d(x25)

弥生時代石器45
使用痕写真6

刃器

1 S B7106

図版245-2

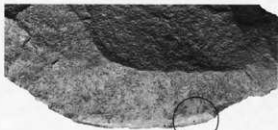
2 S B7639

図版249-38

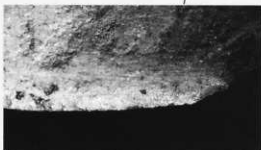
(摩耗・線状・
光沢痕)



1



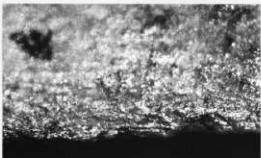
a(x1.5)



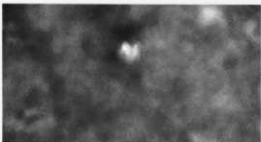
b(x3.3)



c(x10)



d(x20)



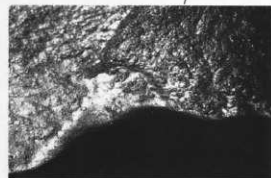
e(x50)



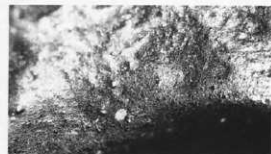
2



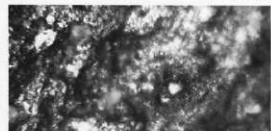
a(x1.0)



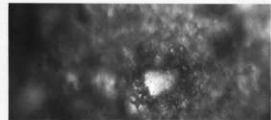
b(x3.3)



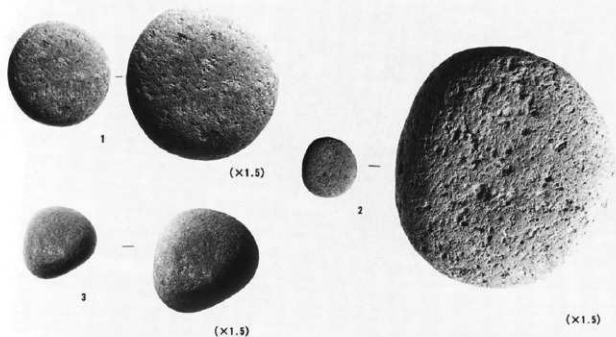
c(x10)



d(x25)

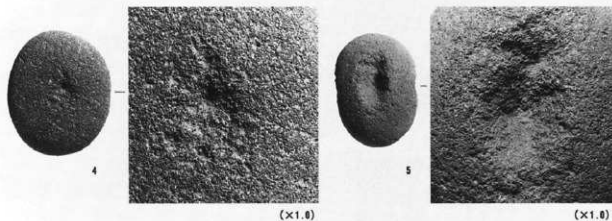


e(x50)



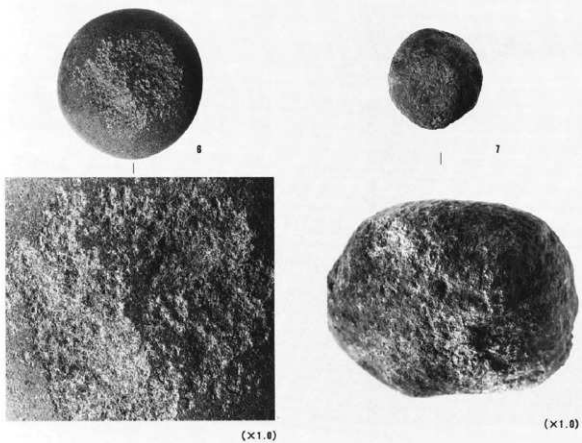
磨石

- 1 S B7002
図版236-75
- 2 2-2区
第1検出面
図版234-37
- 3 S B7250
図版236-95
(摩耗面)



凹石

- 4 S B7089
図版237-100
- 5 2-2区
第1検出面
図版238-115
- 6 S D7046
図版237-112
(敲打部)



敲石

- 7 S B7258
図版240-31
(敲打部)

弥生時代～
古代石器47
使用痕写真8

敲石

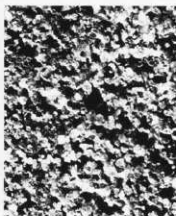
- 1 20-1区
第5検出面
図版240-27
- 2 S B7372
図版239-15
- 3 S B7025
図版241-40
(敲打部)



(×1.0)



(×1.0)



(×5.0)



3



5



(×5.0)



(×1.0)



6



(×5.0)

砥石

- 4 S B7506
図版259-36
- 5 S B7033
図版258-12
- 6 S B7113
図版258-14
(砥面粒度)

働長野県埋蔵文化財センター発掘調査報告書 22

中央自動車道長野線埋蔵文化財発掘調査報告書 16

—長野市内その4—

篠ノ井遺跡群

遺物図版編

発行 平成 9 年 3 月 31 日
発行者 日本道路公団名古屋建設局
長野県教育委員会
働長野県埋蔵文化財センター
印刷 第一法規出版株式会社

