

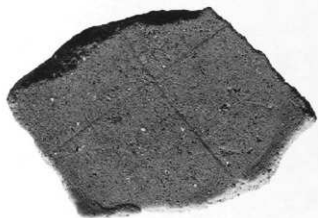
ヘラ書き・
線刻・
刻印土器2



1



2



3



4



5



6

- 1 SD7052
- 2 SB6020
- 3 SB7163
- 4 SK6078
- 5 SD7052
- 6 SK6226

ヘラ書き・
線刻・
刻印土器 3

- 1 S B6014
- 2 S K6313
- 3 S K8864
- 4 S K7460
- 5 S B7391
- 6 S B7196
- 7 S K7012
- 8 S B7485



1



2



3



4



5



6



7



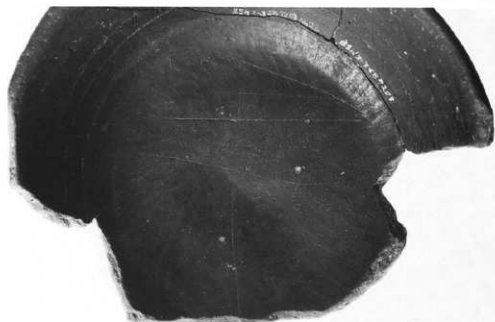
8

ヘラ書き・
線刻・
刻印土器4

1 2-2区
第2検出面
2~3
SB7203
(同一土器)



1



2



3

ヘラ書き・
線刻・
刻印土器5

1 SB7002

2・6

SB7222

3 SB7108

4 SB7010

5 SB7703

7 SB6036

8 SB7022

9 2-1区

第4検出面



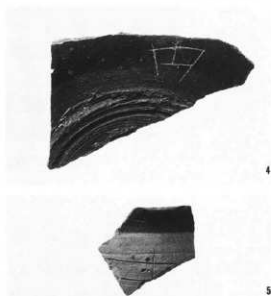
1



2



3



4

5



6



7



8



9

ヘラ書き・
線刻・
刻印土器6

1・4

SB7014

2 SB7001

3 SB7010

5 SB7013

6 SB7041



1



2



3



4



5



6

ヘラ書き・
線刻・
刻印土器 7

1 SB7011

2 SB7551

3 SB7716



1



2



3

ヘラ書き・
線刻・
刻印土器 8



1 SB7404

2・8

SD7006

3 SB7230

4 SB7425

5 SB7136

6 SB7008

7 SB7223

9 3区

3層上面

2



3



4



5



7



6



8



9

へら書き・
線刻・
刻印土器9

- 1 S B7416
2 S B7264
3 S B7133
4 S B7391



1 SB7266

2~3

SD7052

4 SD7039

5・8

SB7022

6 SD7006

7 SB7139

9 SB7698

10 SB7098

11 2-2区

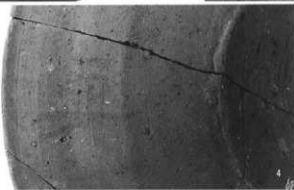
第1検出面

12 SB7019



1

3



5



9



10



11



12

墨書土器 2

- 1 SB7022
- 2 SK7369
- 3 SK7137
- 4 SB7002
- 5 SD7006
- 6 SB7209
- 7 SM7005
- 8 SB7036
- 9 SB7203
- 10 SB7610
- 11 SD7002
- 12 SB7006
- 13 SK7302
- 14 SB7007



1



4



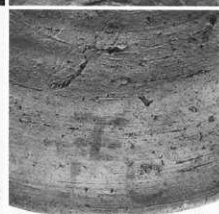
5



12

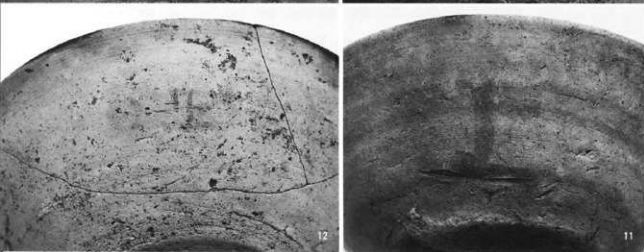
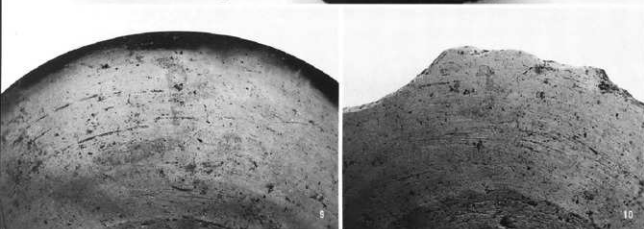
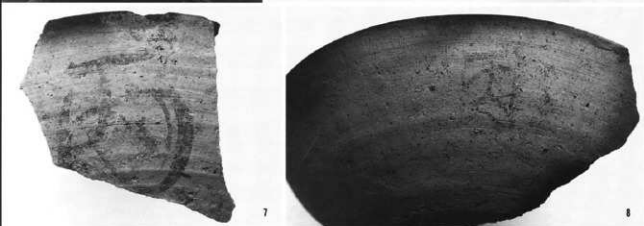
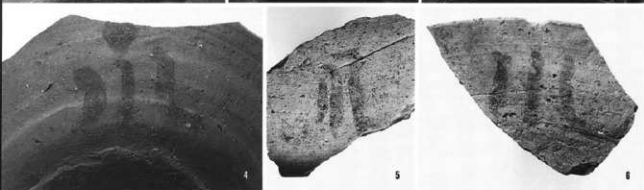
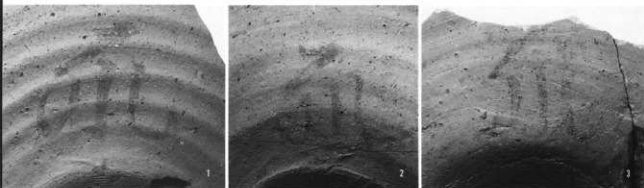


13



14

- 1 SB7259
- 2 SB7218
- 3 SD7052
- 4 SB7263
- 5 3区
- 3層上面
- 6 SB7013
- 7 BSN一括
- 8 SB7416
- 9-11
- SB7019
- (同一土器)
- 12 SB7007



墨書土器 4

1 SB7058

2・6

SB7002

3 SB7416

4 SB7006

5 SD7039

7 SB7202

8 SB7041

9~10

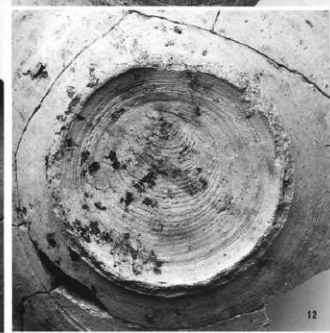
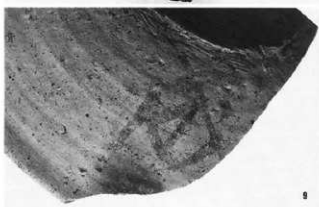
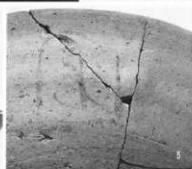
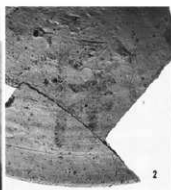
SB7301

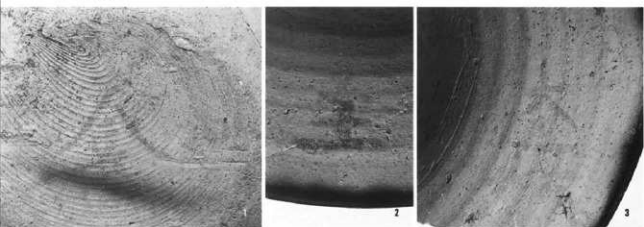
(同一土器)

11~12

SK7447

(同一土器)

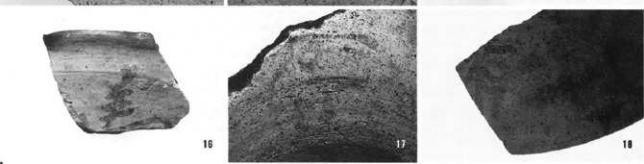
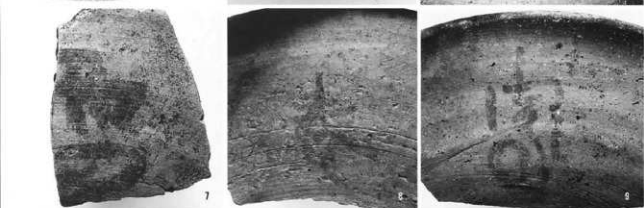




- 1 SB7427
- 2~3
- SB7015
- (同一土器)
- 4 SB7534
- 5・16~17
- SD7006
- 6 SB7305
- 7 2-2区
- 第1横出面



- 8 SK7229
- 9 SB7181
- 10・15
- SB7112
- 11 SD7010
- 12 SK6044
- 13 SB7098
- 14 SB7404
- 18 SB7601



- 16
- 17
- 18

墨書土器 6

1 SB7014

2 SB7022

3 3区

耕作土中

4 SB7018

5 SB7154

6 SB7001

7 SB7051

8 SD7002

9 SD7006

10-11

SB7041

12-13

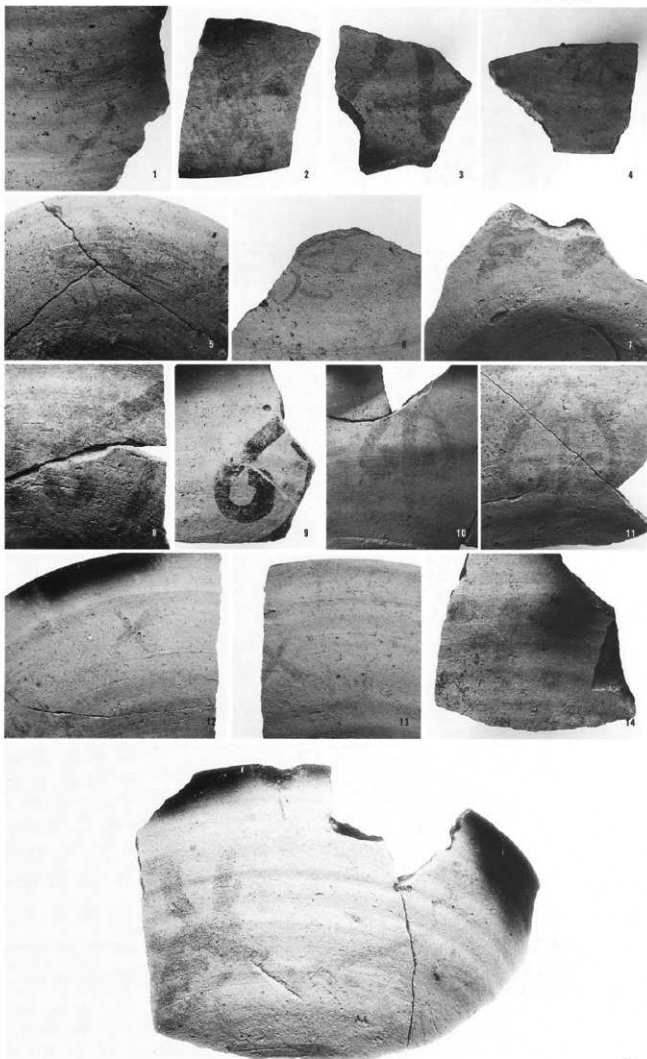
SB7137

(同一土器)

14 2-1区

第1検出面

15 SD7080



硯類 1

1 SB7735

2 SB7019

3 SB7206

4 SB7224

5~6

SB7263

7 SB7053

8 SB7340



1



2



3



4



5



6



7



8

祝類 2

1 SD7007

2 SD7039

3~4

SD7023

(同一土器)

5~6

SD7052

7 SK6044

8 SD7083



1



2



3



4



5



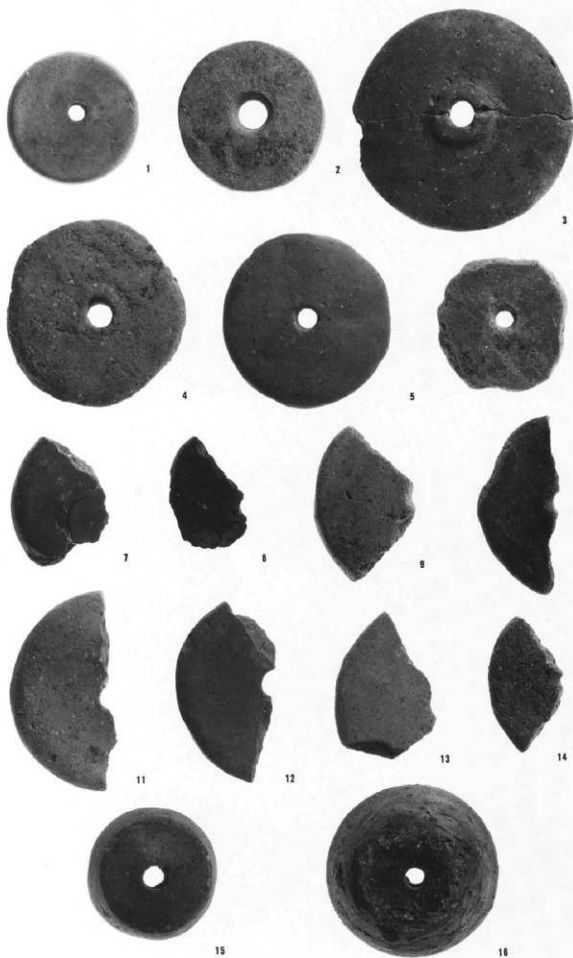
6



7



8



- 1 S D5003
 2・5
 S B7191
 3 S B7655
 4 S B7423
 6 S B7343
 7 S B7226
 8・12
 S B7256
 9 S D7007
 10 3区3層上面
 11 S B7147
 13 S D7042
 14 S B7494
 15~16
 S B7215

土錘 1

- 1 SB7533
 2 SB7426
 3 SB7422
 4 3区3層上面
 5 SD7084
 6 SB7519
 7 SD7006
 8~9
 2-2区
 第1検出面
 10 SB7001



1



2



3



4



5



6



7



8



9



10

1・5

S B7486

2 S D7006

3 S D7007

4 S B7004

6 S B7272

7 3区3層上面

8 S B7026

9 S B7041

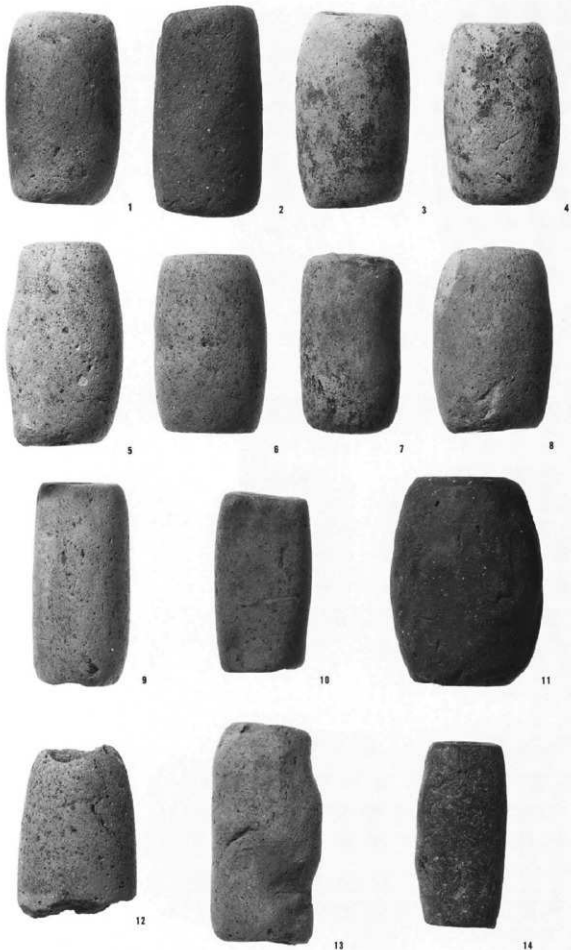
10 S B7019

11 S D7052

12 S D7011

13 S K6432

14 S B7478



土鍾 3

1 SB7006

2 SD7001

3 SB7053

4 SB7008

5 SB7013

6 · 13

3区3層上面

7 SK7330

8 · 11

SB7041

9 2-1区

第2棟出面

10 SB7348

12 SB7011

14-15

SD7038



1



2



3



4



5



6



7



8



9



10



11



12



13



14



15



- 1 SB7478
- 2 2-1区下層北壁
下層5層
- 3 2-1-b区
第2検出面
- 4 3区検出面
- 5 · 9
SB7082
- 6 SK7414
- 7 SB7398
- 8 SB7256

土器片製半円板

1 2-1-b区

第2検出面

2 SB7490

3 SB7508

4 SB7646

5・7

2-2区

第1検出面

6 SK7412

8 SD7030

9 SB7293

10-11

SD7046

12 SD7080

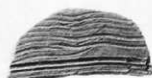
13 SB7014

14 1-3区

第1検出面



1



2



3



4



5



6



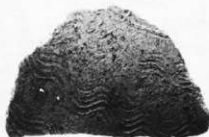
7



8



9



10



11



12



13



14

ファイゴの羽口
粒状滓
鉄塊剥片
鍛造剥片



1



2



3



4



5



6

特異な
ヘラミガキ土器
土師器・
須恵器杯の底部
調整
底部木葉痕土器

- 1 S K 6044
- 2 S B 7227
- 3 S K 6097
- 4 S K 8050
- 5 S K 8110
- 6 S D 7007
- 7 S B 7216
- 8 S B 7404
- 9 S B 7416
- 10 S D 7006
- 11 S B 7404
- 12 S B 7019
- 13 S B 7001
- 14 S K 7376



1



2



3



4



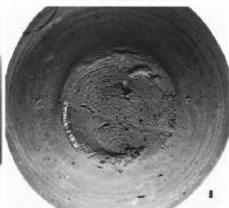
5



6



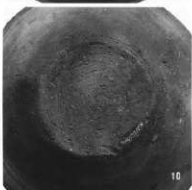
7



8



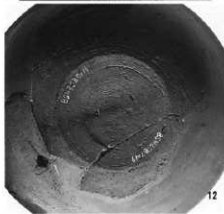
9



10



11



12



13



14

- 1 SB7521
- 2 2~3区2層上面
- 3~4
- 3区3層上面
- 5 SB7528



1



2



3



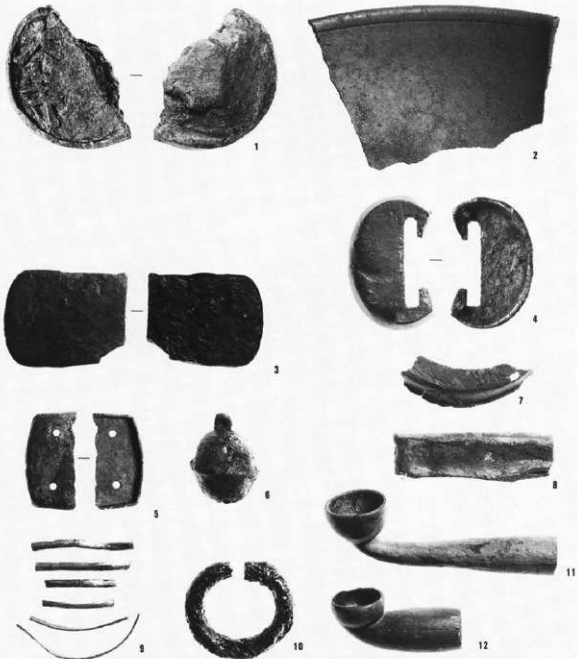
5



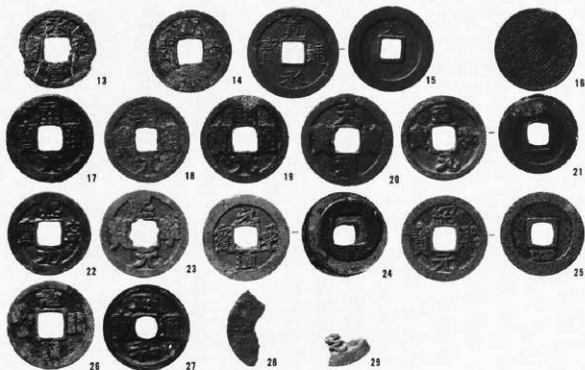
4

青銅製品
(銅印・錢貨等)

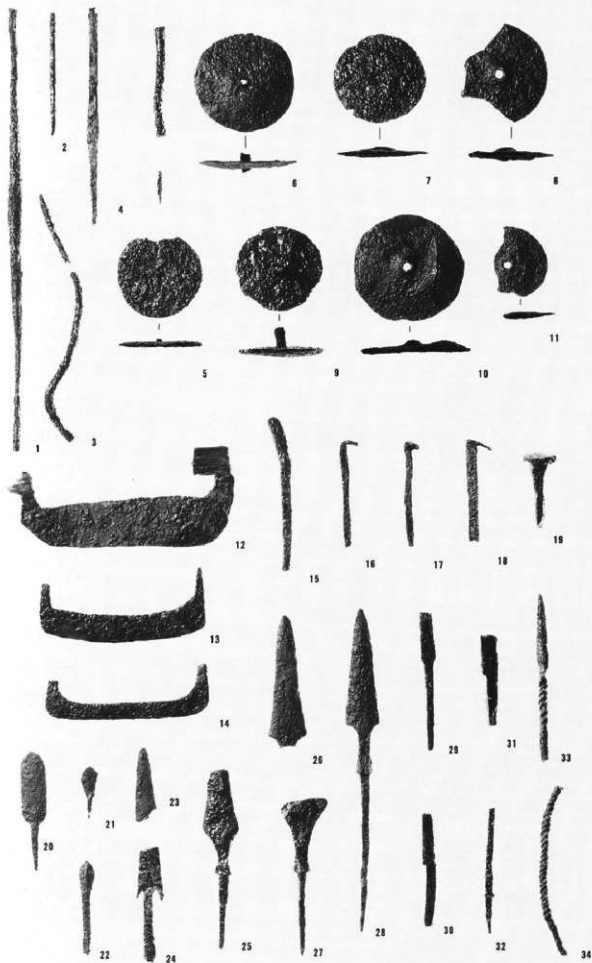
- 1 S B7109
 2 2~3区
 2層上面
 3 S B7552
 4 2-1区
 第1検出面
 5 2-1区西壁
 6 S B7017
 7 S B7421
 8 3-E区
 検出時
 9 S K8403
 10 S B7303
 11 20-1区東壁
 12 2-1-b区
 南壁



- 13 S B7404
 14 20-1区表採
 15 1-1-b区
 東壁26層
 16 1-1-b区
 耕作土中
 17 20-1区表採
 18 S K7153
 19 S K8590
 20 2-2区
 第1検出面
 21 S K7045
 22 S D7021
 23 1-3区
 第2検出面
 24 3区3層上面
 25 S K7213
 26 2-1区東壁
 27 S K7045
 28 S K7224
 29 S K8413



鉄製品 1
 (紡錘車・
 苧引き金具・
 鉄鍬)



- 1 S B 7605
- 2 S B 7015
- 3 S B 7187
- 4 S B 7022
- 5 S B 7314
- 6 S B 7041
- 7・27
S B 7220
- 8・28
S B 7269
- 9 S B 7287
- 10 S B 7412
- 11 S B 7537
- 12 S B 7422
- 13 S B 7207
- 14 S D 7006
- 15 2-2区
第1検出面
- 16 S B 7108
- 17 S K 8683
- 18 S K 7031
- 19 S B 7533
- 20 2-2区
第1検出面
- 21 S B 7038
- 22 2-1-b区
第1検出面
- 23 S B 7391
- 24 S K 7229
- 25 2-1区
第1検出面
- 26 S B 7541
- 29 S B 7262
- 30 S D 7039
- 31 S K 7235
- 32 S B 7272
- 33 S B 7051
- 34 S K 7235

鉄製品 2
(刀子・鉄斧・
不明品)

1・18

S B7013

2 S B7243

3~4

S B7029

5 S B7030

6 S B7011

7 S B7184

8 S B7470

9 S B7001

10 S B7428

11 S D7006

12 S K7140

13 S B7305

14 S B7407

15 S K7412

16 S B7220

17 S B7602

19 3-北区

第1検出面

20 S K7653

21 S B7593

22 S B7425

23 2-3区

3層上面

24 S D7033

25 2-1区

第1検出面

26 S K8254

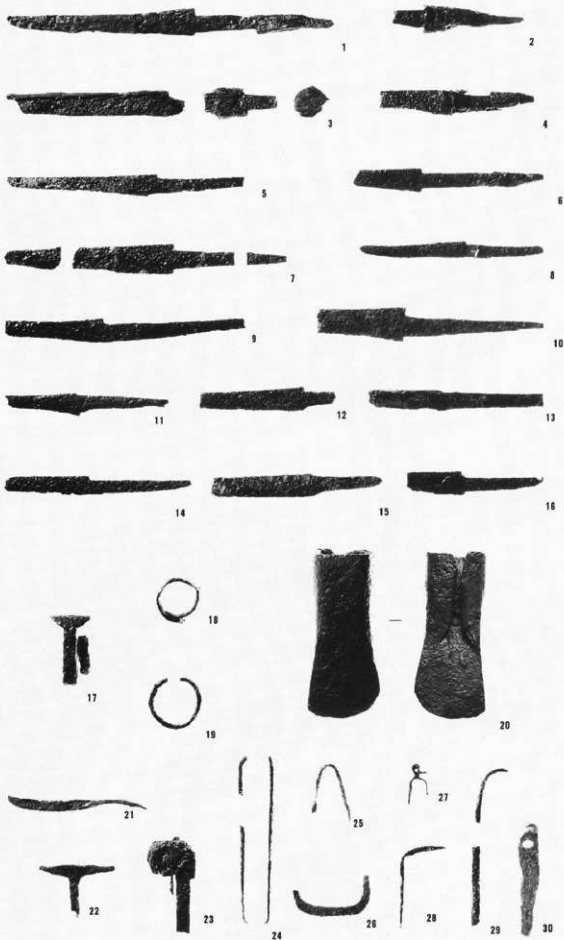
27 S K7012

28 S B7348

29~30

2-1区

第1検出面



鉄製品 3
(鋤先・鎌)

1 S D7002

2 S B7054

3 S D7068

4~5

2-2区

第1検出面

6 S B7111

7 S B7008

8 S D7087

9 S B7602

10 2-1区

第1検出面



木製品 1
(農具・
生活具 1)

1 S K6142

2-3

S D6007

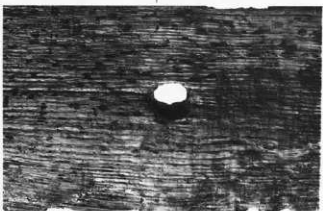
4 S K8100

5 S A5001

6 S K6235

7 S K6307

8 S K6048



2

3



7



4



5



6



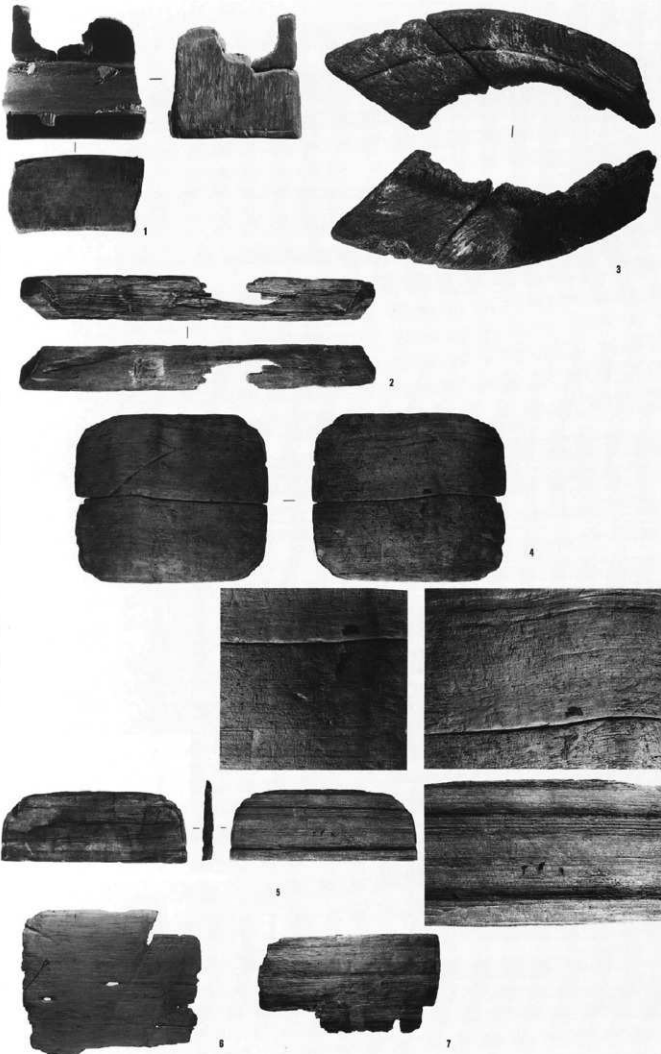
8

1~3

S K6202

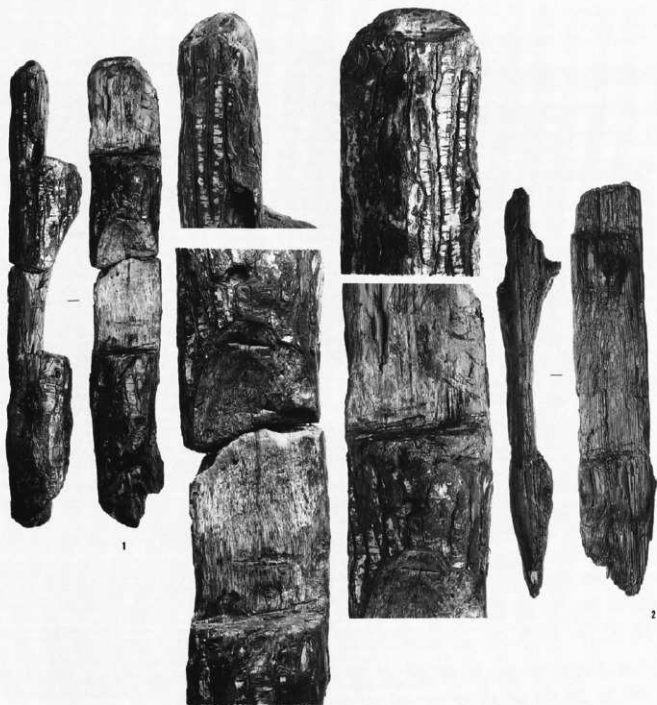
4~7

S K8253



木製品 3
(建築材 1)

- 1 SK6202
2 20-2区
第2検出面
3 SD6002
4~5
SK6095



木製品 4
(建築材 2)

1 2-1区
第4枚出面
2~7
S K 8253
8~9
S K 6307



木製品 5
(杭 1)

- 1 SK6307
 2 20-1区
 第4棟出面
 3 SK6048
 4~5
 SA5001
 6 SA6001
 7 SA6002
 8~9
 SA6003
 10 SA6006
 11 1-1-c区
 第1棟出面



木製品 6
(杭 2)

1~8

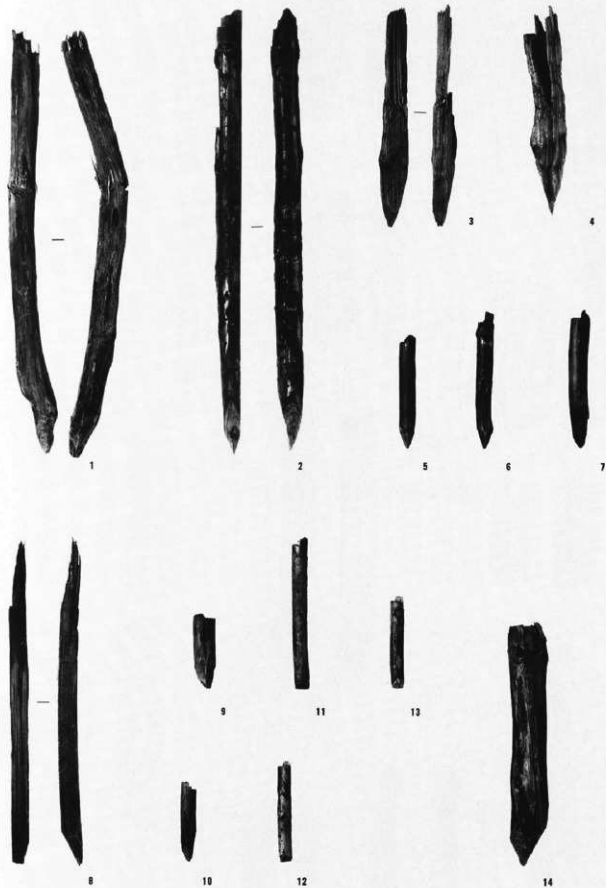
SA6007

9~13

SA6009

14 1-1-c区

第1検出面



弥生時代石器 1

原石・石核 1

1 SD7052

2 SD7080

3 SD6028

4 SB7110

5 SB7378

6 2-1区

第2検出面

(1:1)



1



2



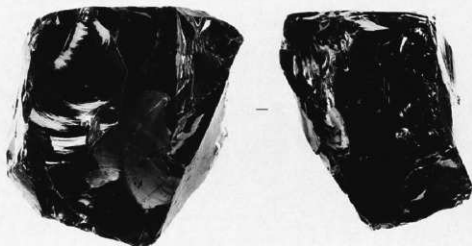
3



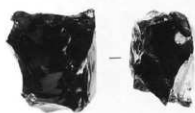
4



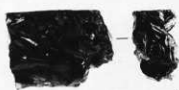
5



6



7



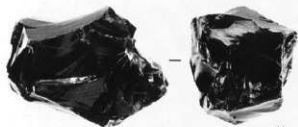
8



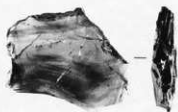
9



10



11



12



13



14

原石・石核 2

7 SB7508

8 SK7294

9 SD7006

10 SB7627

11 SB7180

12 SB7604

13 SB7231

14 ST7020

(1 : 1)

弥生時代石器 3

剥片A類・
剥片B類

1 SB7506

2 SK7138

3 SB7576

4 SB7078

5 SB7697

6 SB7499

7 SB7420

8 SB7613

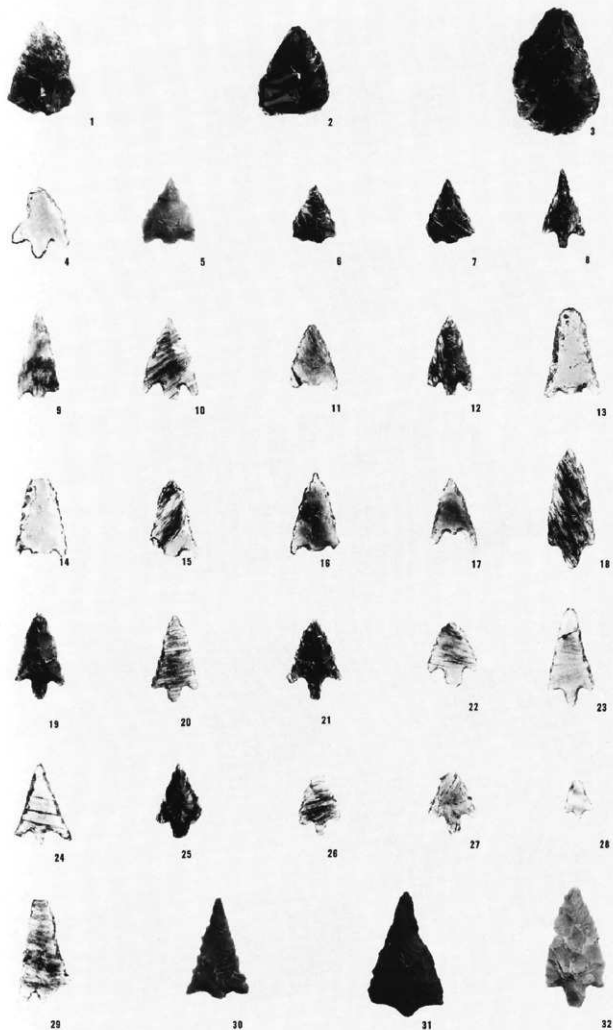
9 SD7110

10 SD7110

11 SM7026

(1:1)





石鏃 1

1 S B7745

2 S B7426

3 S B7372

4 S D7067

5 2-1 区

6 S B7593

7 S B7593

8 S B7451

9 2-2 区

第 1 検出面

10 S B7438

11 S B7488

12 S B7246

13 1-3 区

第 1 検出面

14 S B7508

15 S B7572

16 S B7257

17 2-1 区

18 S B7499

19 S B7464

20 S B7279

21 S B7207

22 S B7438

23 2-2 区

第 1 検出面

24 S B7446

25 S B7702

26 S D7052

27 2-3 区

第 1 検出面

28 S B7676

29 S B7587

30 S D7088

31 S B7625

32 S B7086

(1:1)

弥生時代石器 5

石鏃 2・石錐

33 S B7593

34 S B7594

35 S B7040

36 1-1区

第4検出面

37 S D7067

38 S D7068

39 S B7071

40 S B7320

41 S D7039

42 S B7277

43 S B7268

44 S B7431

45 S B7082

46 S B7272

47 S B7082

48 S B7495

(1:1)



33



34



35



36



37



38



39



40



41



42



43



44



45



46



47



48



打製石斧 1 (表)

1 SB7420

2 SK8238

3 SB7525

4 SD6023

5 3区

6 SB7250

7 SD7011

8 2-3区

9 SD7046

10 2-1区

第1検出面

11 2-2区

第1検出面

12 SD5003

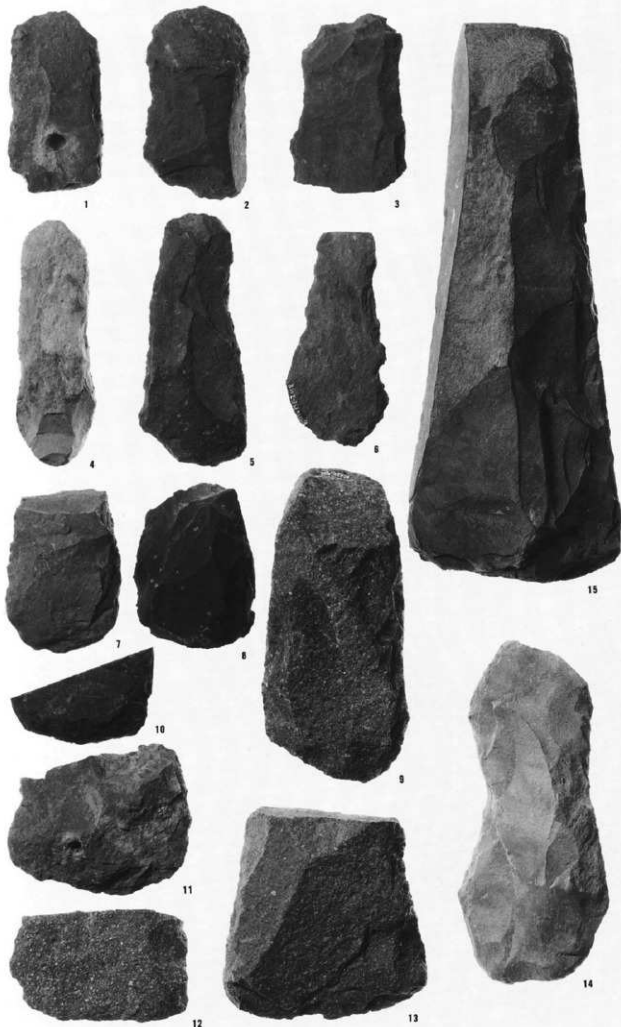
13 SB7205

14 1-2区

第3検出面

15 SD5003

(1:2)



弥生時代石器 7

打製石斧 1 (裏)

1 S B7420

2 S K8238

3 S B7525

4 S D6023

5 3区

6 S B7250

7 S D7011

8 2-3区

9 S D7046

10 2-1区

第1検出面

11 2-2区

第1検出面

12 S D5003

13 S B7205

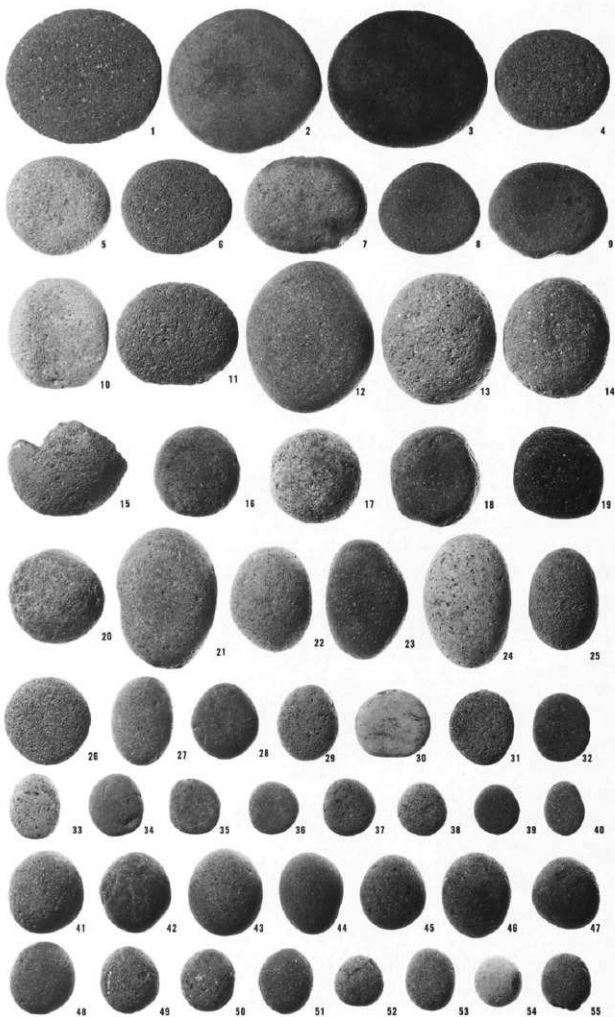
14 1-2区

第3検出面

15 S D5003

(1:2)





磨石 1

1 S D 7007

2 S B 7198

3 3区

第1検出面

4 S D 7031

5 S D 7080

6 S B 7008

7 S K 7376

8 S B 7252

9 S B 7552

10 S D 7007

11 S K 7235

12 S K 7517

13 S B 7213

14 S D 7110

15 S K 7281

16 S K 8289

17 S B 7009

18 S B 7524

19 S K 8100

20 2-3区

21 S D 7004

22 S D 7052

23 S B 7626

24 S D 7006

25 S M 7022

26 S D 7110

27 S K 8372

28 S B 7149

29 S B 7203

30 2-1区

第3検出面

31 S M 7001

32 S D 7079

33 S D 7031

34 S D 7031

35 S B 7488

36 S B 7202

37 2-2区

第1検出面

38 S D 7031

39 3区

40 S K 7343

41 S B 7154

42 S B 6015

43 S D 7012

44 S B 7324

45 S M 6002

46 S B 7078

47 S B 7700

48 S B 7041

49 2-3区

50 S K 8441

51 S D 7052

52 3区

53 S B 7601

54 2-1区

第1検出面

55 S D 7007

(1:3)

弥生時代石器 9

磨石 2

56 S B7089

57 S B7101

58 S D7087

59 S D6033

60 S D7006

61 S B7115

62 S B7427

63 S K8189

64 S B7407

65 1-1区

第3検出面

66 S K6410

67 S D7031

68 S B7460

69 S B7751

70 S B7542

71 S D6007

(1:3)

72 S B7268

73 S B7106

74 S B7182

75 S B7002

76 S K7207

77 S B7418

78 S M7017

79 S B7622

80 S B7246

81 S D7031

82 S D7052

83 S B7026

84 S B7001

85 S B7488

86 S K6117

87 2-2区

第1検出面

88 S D7101

89 S B7108

90 S B7052

91 S D7106

92 S B7007

93 S B7519

94 S B7019

95 S B7250

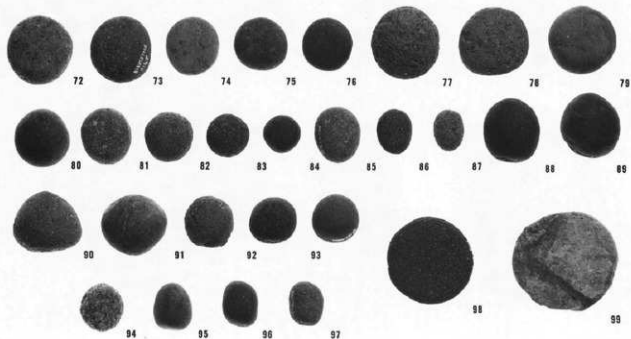
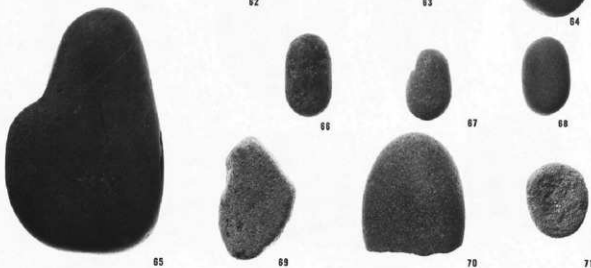
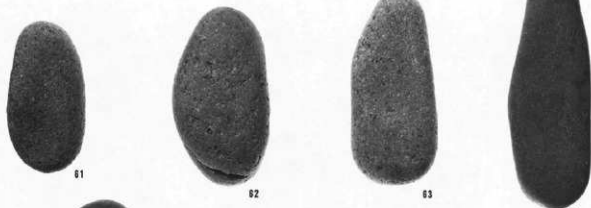
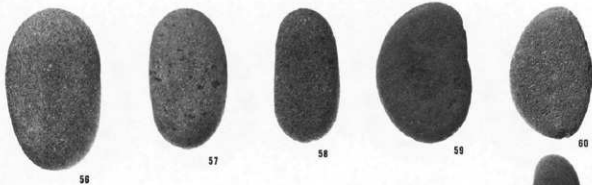
96 S B7250

97 S B7004

98 S K8226

99 S B7750

(2:3)



凹石

100 S B7089

101 S K7445

102 S B7252

103 S B7078

104 S D7084

105 S B7213

106 S B7524

107 S B7228

108 S B7032

109 S K7190

110 S B7025

111 S D7046

112 S D7046

113 S B7255

114 S D7047

115 2-2区

第1検出面

116 S D7041

117 S D7016

118 S B7119

119 2-2区

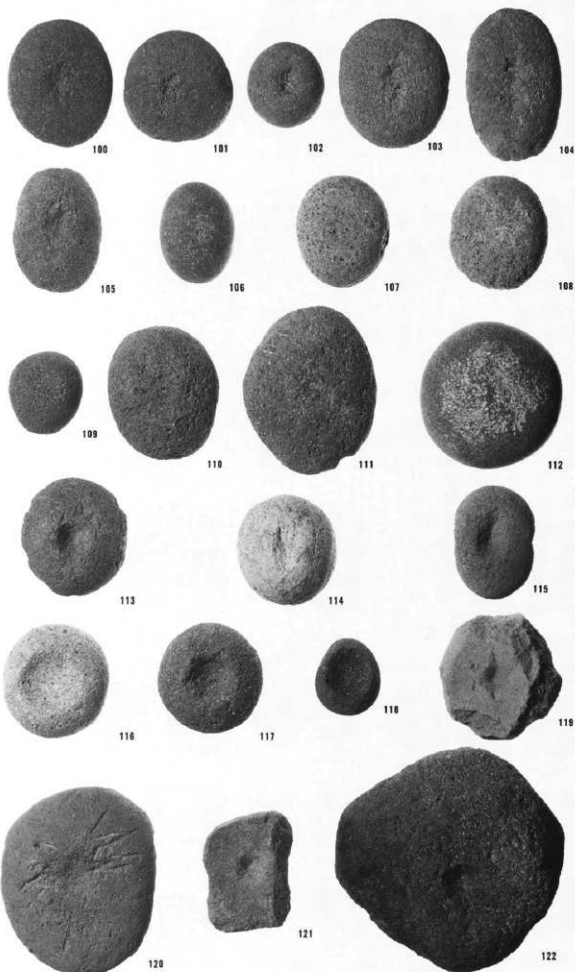
第2検出面

120 3区

121 S B7524

122 S K7320

(1:3)



弥生時代石器11

敲石1 (表)

1 S B7137

2 S B7595

3 S D7088

4 S B7439

5 S B7416

6 S D7001

7 2-1区

第1検出面

8 S B7007

9 S B7416

10 S B7485

11 S B7525

12 2-1区

第1検出面

13 S B7089

14 2-1区

第1検出面

15 S B7372

16 2-2区

17 3区

18 S B7133

19 S B7514

20 S B7040

21 S B7255

22 S K8413

23 2-1区

第1検出面

24 S D7006

25 S D7002

26 S B7115

27 20-1区

第5検出面

28 S D7030

29 S D6007

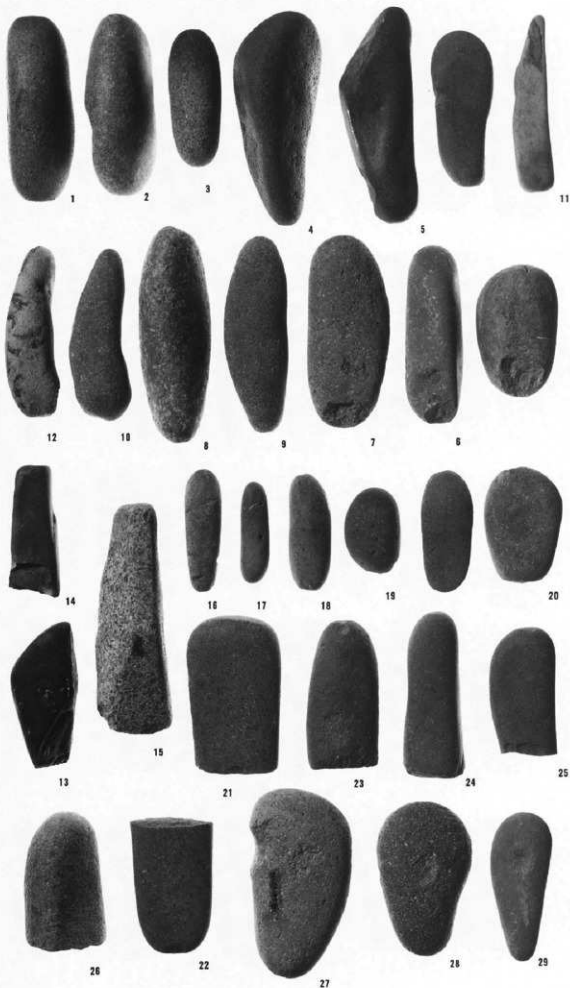
30 S D7110

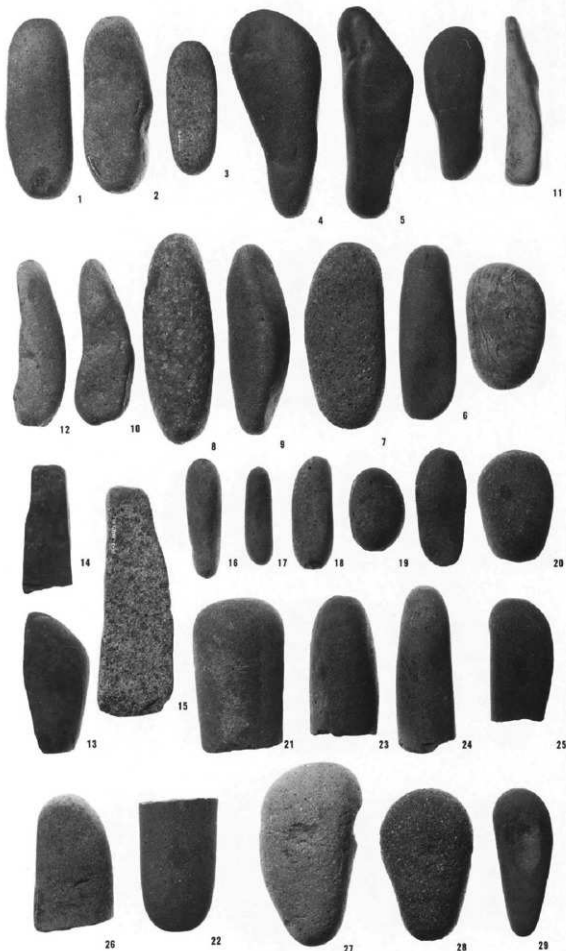
31 S B7258

32 S B6014

33 S B7718

(1:3)





敲石 1 (裏)

- 1 S B7137
 - 2 S B7595
 - 3 S D7088
 - 4 S B7439
 - 5 S B7416
 - 6 S D7001
 - 7 2-1区
 - 第1検出面
 - 8 S B7007
 - 9 S B7416
 - 10 S B7485
 - 11 S B7525
 - 12 2-1区
 - 第1検出面
 - 13 S B7089
 - 14 2-1区
 - 第1検出面
 - 15 S B7372
 - 16 2-2区
 - 17 3区
 - 18 S B7133
 - 19 S B7514
 - 20 S B7040
 - 21 S B7255
 - 22 S K8413
 - 23 2-1区
 - 第1検出面
 - 24 S D7006
 - 25 S D7002
 - 26 S B7115
 - 27 20-1区
 - 第5検出面
 - 28 S D7030
 - 29 S D6007
 - 30 S D7110
 - 31 S B7258
 - 32 S B6014
 - 33 S B7718
- (1:3)

弥生時代石器13

敲石 2 (表)

30 S D7110

31 S B7258

32 S B6014

33 S B7718

34 S B7105

35 S D7001

36 S B7222

37 S D7061

38 S B7040

39 S K8092

40 S B7025

41 S B7354

42 S K7333

(1 : 3)



30



31



32



33



34



35



36



37



38



39



40



41



42



43

敲石 2 (裏)

30 S D7110

31 S B7258

32 S B6014

33 S B7718

34 S B7105

35 S D7001

36 S B7222

37 S D7061

38 S B7040

39 S K8092

40 S B7025

41 S B7354

42 S K7333

(1 : 3)



30



31



32



33



34



35



36



37



39



40



41



42



43

台石 1

1 SB6028

2 SB7615

3 SB7027

4 SB7358

5 SB6031

6 SB7499

(1 : 4)



1



2



3



4



5



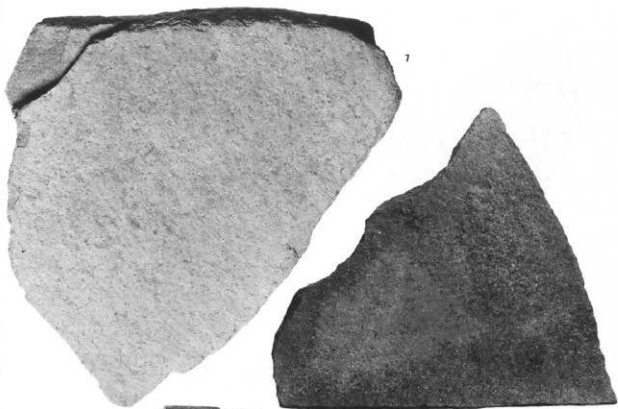
6

台石 2

7 SK6049

8 SB6035

(1 : 4)

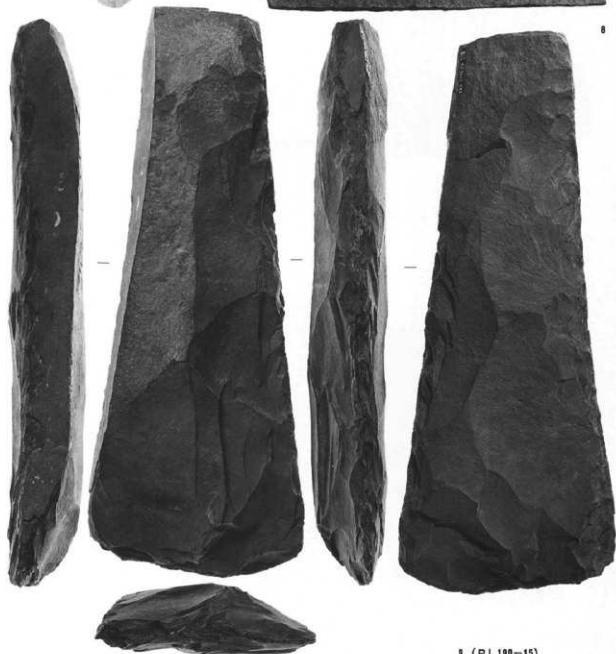


打製石斧 2

9 SD5003

PL190-15

(1 : 2)



弥生時代石器17

使有石屑

1 S B 7014

2 2-2区

第1検出面

3 S B 7517

4 S B 7029

5 S B 7030

6 S D 7023

7 S B 7276

8 S B 7252

9 S B 7272

10 S B 7368

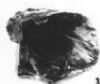
(1:1)



1



2



3



4



5



6



7



8



9



10



刃器 1

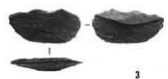
- 1 S B7077
 - 2 S B7106
 - 3 S B7272
 - 4 S B7499
 - 5 S D7052
 - 6 S D6007
 - 7 S B7485
 - 8 S B7208
 - 9 S D5003
 - 10 S D7080
 - 11 2-3区
 - 12 S B7499
 - 13 S D7080
- (1 : 2)



1



2



3



4



5



6



7



8



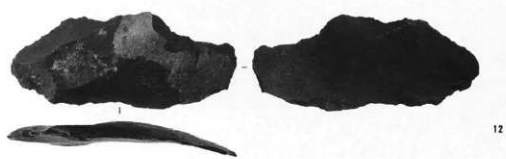
9



10



11



12



13

弥生時代石器19

刃器 2

14 SD7051

15 3区

16 SB7765

17 SD7046

18 20-1区

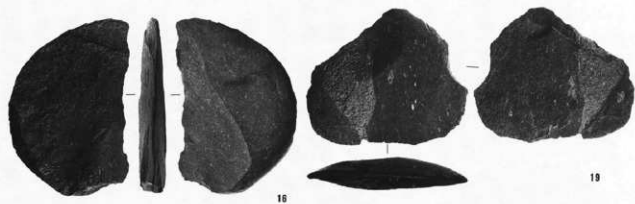
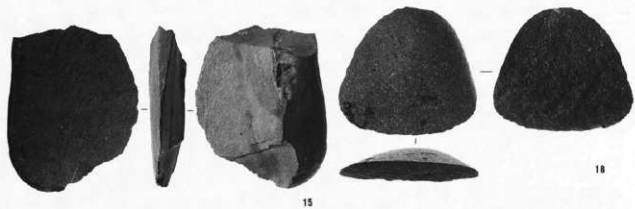
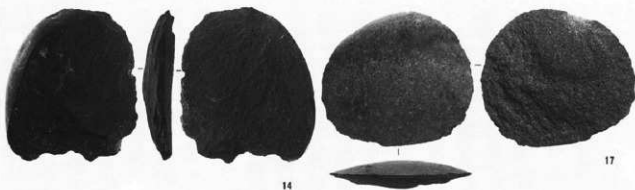
第3検出面

19 SK6058

20 SB7086

21 SD7047

(1:2)



刃器 3

22 S D7110

23 S K6051

24 S D7080

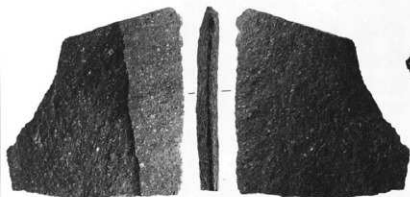
25 2-3区

26 S K6051

27 S B7493

28 S B7268

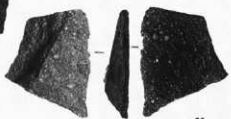
(1:2)



26



22



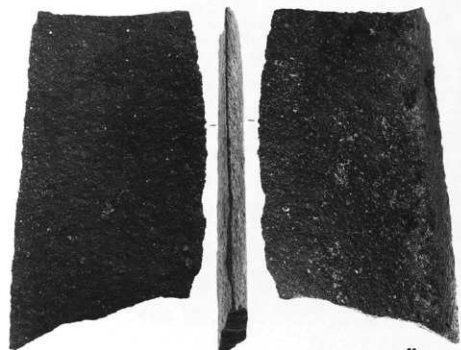
23



27



25



28



24

弥生時代石器21

刃器 4

29 SD7110

30 SB7546

31 SB7746

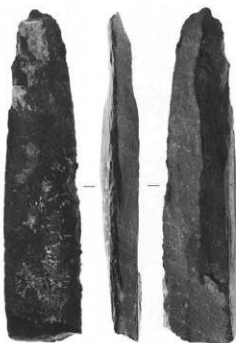
32 SD7083

33 2-3区

(1:2)



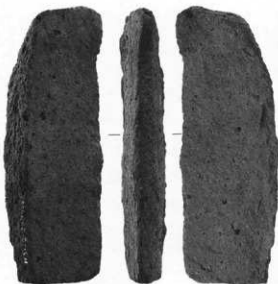
29



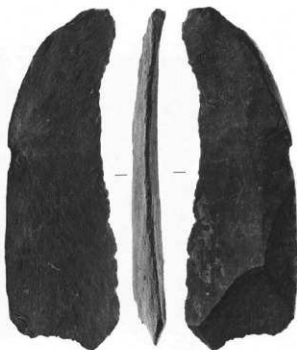
31



30



32



33

刃器 5

34 SK7824

35 SD7006

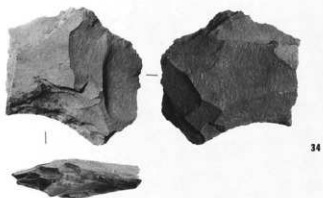
36 SD7016

37 SB7272

38 SB7639

39 SD7048

(1 : 2)



34



37



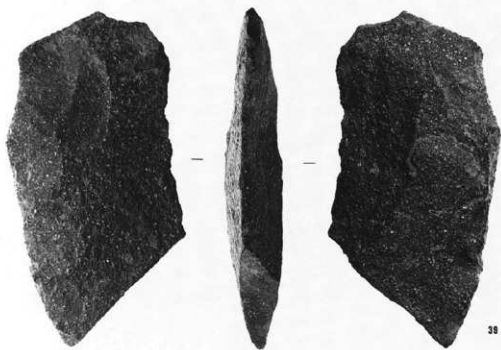
35



38



36



39

刃器 6

40 S B7399

41 S D7016

43 S B7427

44 3区

45 S B7442

46 S B7230

(1 : 2)



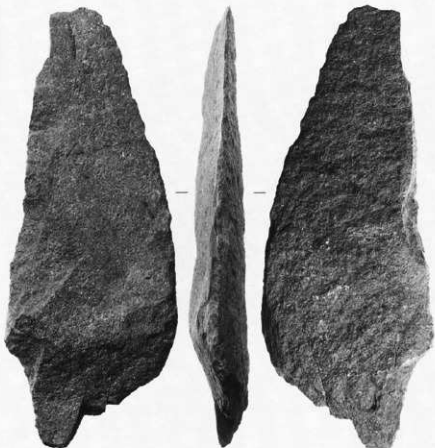
40



43



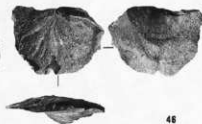
44



41



45

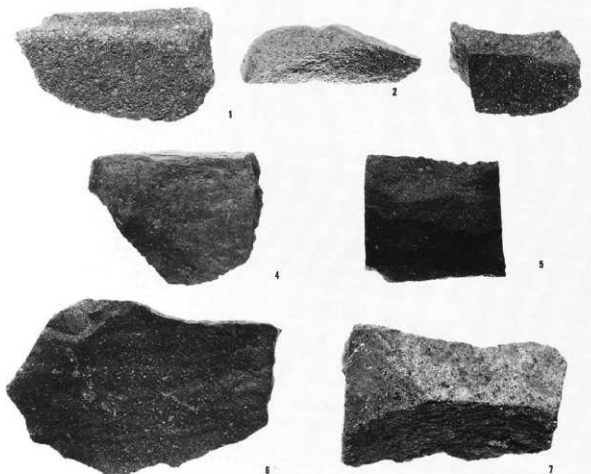
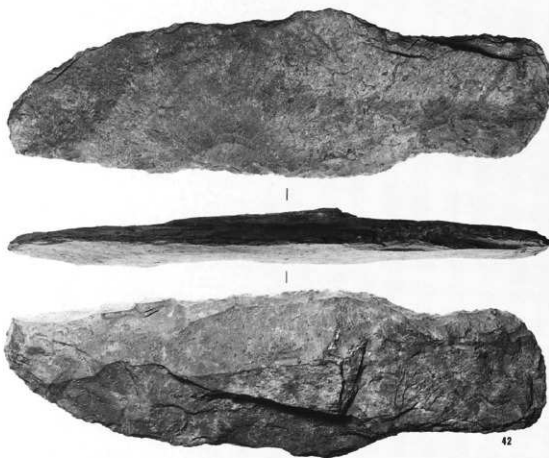


46

刃器 7

42 1-3区

(1:2)



刃器素材

1 SB7048

2 SB7517

3 SB7723

4 SB7613

5 SK8864

6 SK8235

7 SK8144

(1:2)

弥生時代石器25

刃器 8

47 S D6007

48 S K8864

49 S D7011

50 S D6024

51 S D7110

52 2-1区

第1検出面

53 20-1区

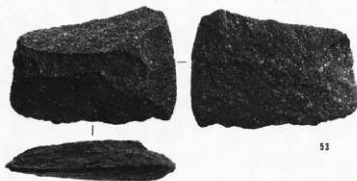
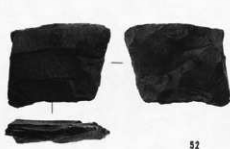
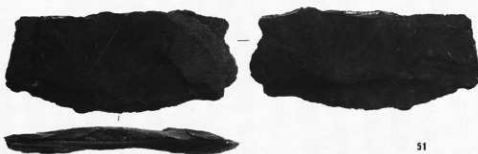
第1検出面

54 S D7110

55 S B7246

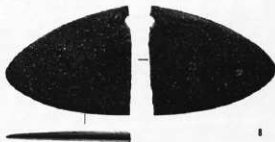
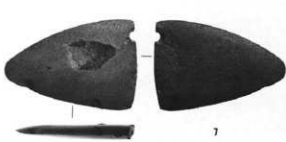
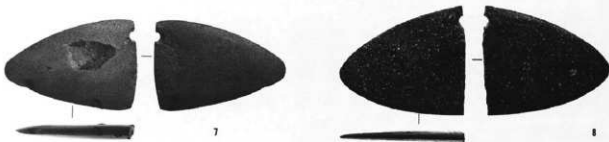
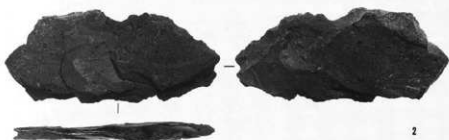
56 S K7343

(1:2)



磨製石包丁

- 1 20-1区
第4横出面
2 S B7216
3 S B7272
4 S B7276
5 S D7006
6 2-3区
7 S B6014
8 S B7277
(1:2)



磨製石斧 1

- 1 S D7023
- 2 S D6002
- 3 S B7027
- 4 S K8167
- 5 S B7627
- 6 3区
- 7 S B7105
- 8 S B7021
- 9 S B6014
- 9 2-2区
- 第1横出面
- (1:2)



1



2



4



3



5



6



7



8



9



10



11



12

磨製石斧 2

10 S K8167

11 S D7039

12 20-1区

第3検出面

13 S D6007

14 S B7275

15 2-2区

第1検出面

16 S B7268

17 S B7079

18 S D7050

19 3区

20 S D7052

21 S B7680

22 2-2区

第1検出面

(1:2)



13



14



15



16



17



18



19



20



21



22

弥生時代～
古代石器29

砥石 1

- 1 S B7256
S B7654
2 S B7178
3 S B7147
4 S D7080
5 S B7283
6 S B7101
7 2-1区
第2検出面
8 S D7066
(1:3)



1



2



3



4



6



5



7



8

砥石 2

9 2-3区

第1検出面

10 SK7036

11 SB7038

12 SB7033

13 SB7254

14 SB7113

15 SB7526

16 SD7002

17 SB7260

18 SD7023

19 SK7205

20 SB7610

21 2-2区

第1検出面

22 2-2区

第1検出面

(1:3)



9



10



11



12



13



14



15



16



17



18



19



20



21

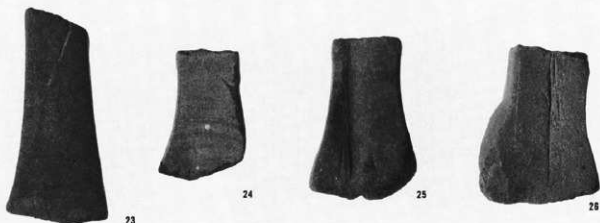


22

弥生時代～
古代石器31

砥石3

- 23 2-2区
第1検出面
24 S B7263
25 S D7092
26 S B7111
27 4区
28 S D7052
29 S B7372
30 S B7521
31 S B7706
32 S D7014
33 S B7213
34 S B7651
35 S D7010
36 S B7506
37 S B7177
38 S B7268
(1:3)



砥石 4

39 S B7416

40 S B7133

41 S B7255

(1 : 3)

くぼみ石・石臼

42 S K8100

43 3区

第2検出面

44 S B7215

45 SM7019

46 S K7012

47 S K7134

(1 : 3)



39



40



41



42



43



44



45



47

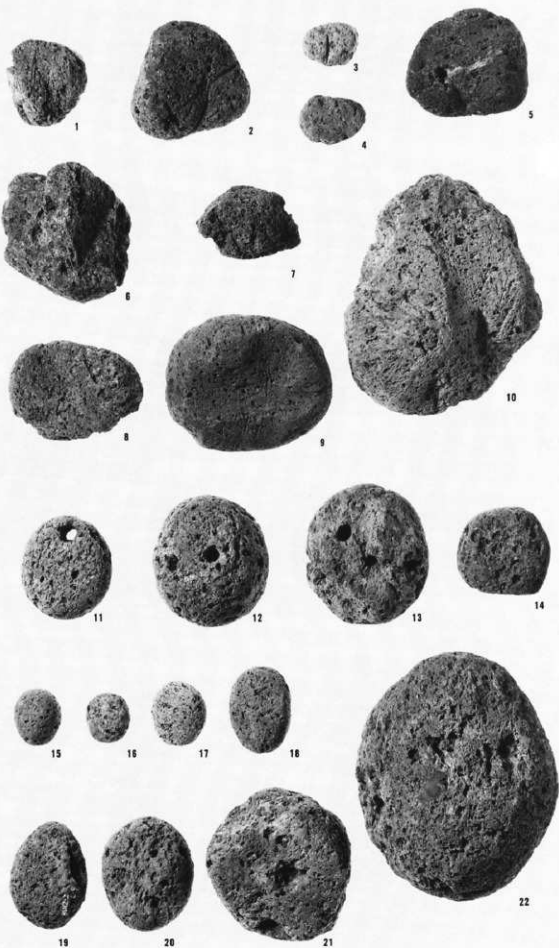


46

弥生時代～
古代石器33

軽石製品

- 1 S B6002
 2 S B7256
 3 S D5003
 4 S K8857
 5 2-2区
 第1検出面
 6 S B7190
 7 S B7124
 8 S B7354
 9 3区
 10 不明
 11 S D7023と
 S D7052の境
 12 S B7155
 13 S B7255
 14 S B7230
 15 S B7036
 16 20-1区
 第1検出面
 17 20-1区
 第2検出面
 18 S K6355
 19 2-2区
 20 S B7272
 21 S K6097
 22 S D7016
 (1:2)



みがき石

1 2-3区

2 S B 7021

3 S B 7027

4 3区

5 S B 7161

6 S D 7046

7 S B 7167

8 S B 7126

9 S B 7696

10 S K 8476

11 S B 7079

12 S M 7031

13 S B 7488

14 S B 7655

15 S B 7034

16 S B 7065

17 S D 7110

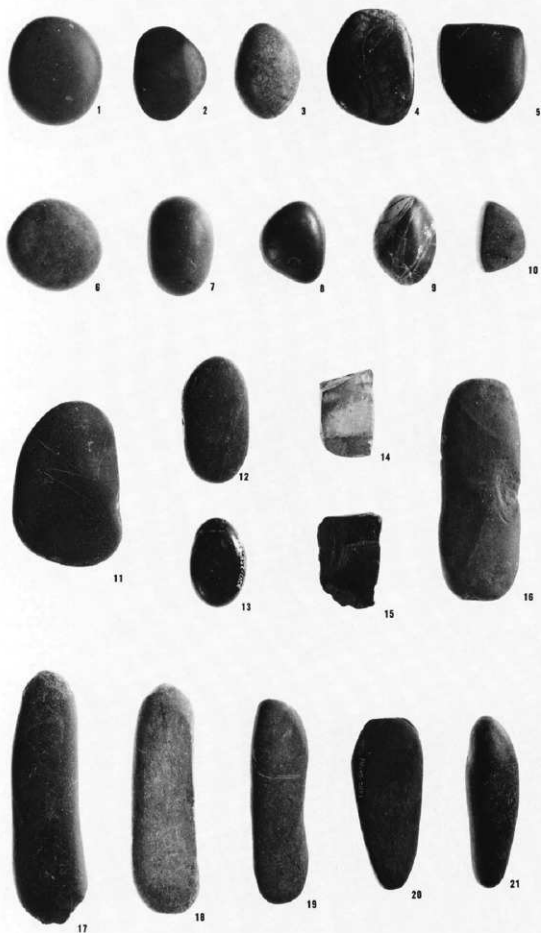
18 S B 7508

19 S B 7511

20 S B 7358

21 S K 7075

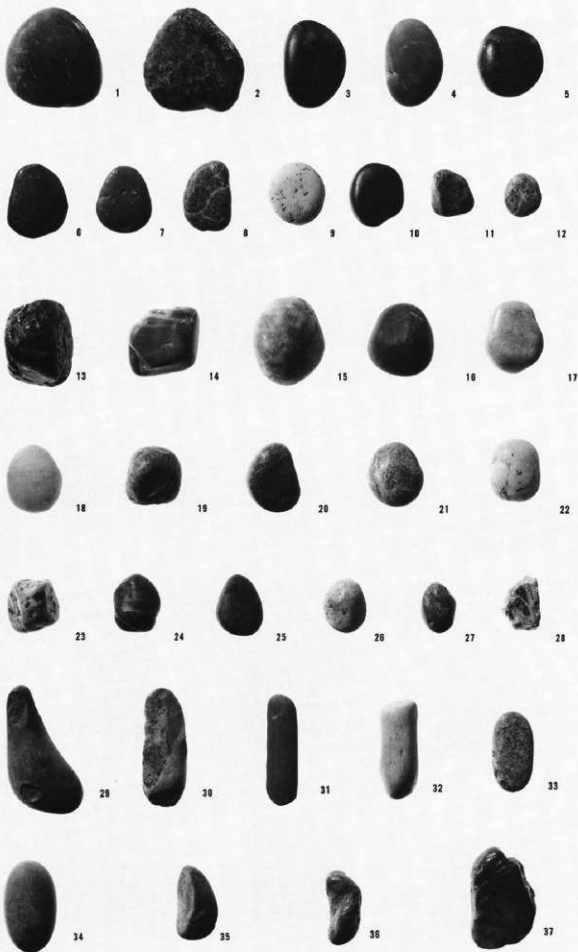
(1:2)



弥生時代石器35

玉石

- 1 20-1区
 2 S B7162
 3 S B7142
 4 S B7209
 5 S D7007
 6 S B6024
 7 S B7180
 8 S B7235
 9 S B7008
 10 S B7104
 11 S B7469
 12 S B7160
 13 3区
 14 3区
 15 S D7007
 16 2-3区
 17 S B7111
 18 S B7014
 19 S B7387
 20 S B7459
 21 S B7270
 22 S B7063
 23 S B7517
 24 S B7563
 25 S B7094
 26 S D7041
 27 S B7459
 28 S D7040
 29 S B7224
 30 S B7091
 31 S B7150
 32 2-3区
 33 S B7517
 34 2-2区
 第1検出箇
 35 S B7078
 36 S B7154
 37 S B7566
 (1:1)



穴開石

1 S B7674

2 S B7039

3 S K7135

4 不明

5 S B7426

6 S B7698

7 2-2区

第1検出画

8 S D7028



付着物のある石

9 S K8226

10 S K8226

11 S K8226

12 S K8226

13 S K8226



角礫

14 S B7415

15 S B7256

16 S K7215

17 S D7046

18 S D7052

19 S K7214

(1:2)



玉関係 1

1 2-1区

2 2-3区

3 S B7162

4 S B7654

5 S K7147

6 S B7423

7 S D7039

8 S D7039

9 2-1区

第2検出面

10 S K8638

11 S B7277

12 S D7039

13 S K7213

14 S B7086

15 2-1区

16 S D7080

17 2-2区

第1検出面

18 S K7023

19 S B7105

20 S D7039

21 3区

22 2-2区

第1検出面

23 S K8372

24 1-4区

第2検出面

25 S B6024

26 S B7195

27 2-2区

第2検出面

28 S B7199

29 S D7052

30 S D6007

31 S B7519

32 S K7665

33 S B7006

34 S B7214

35 S B7599

36 S B7239

37 S B7203

38 S B7441

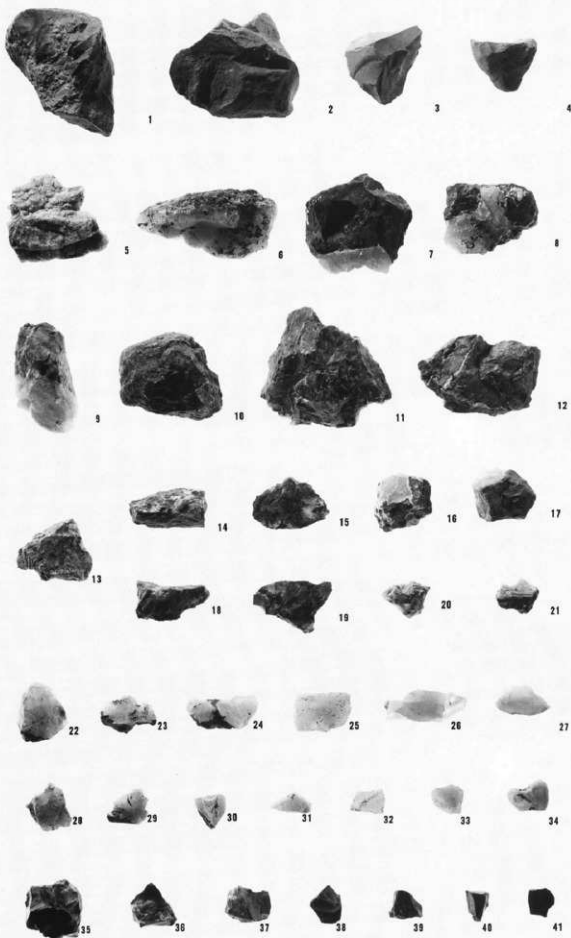
39 S B7275

40 2-2区

第1検出面

41 S B7104

(1:2)



玉關係 2

- 42 S B 6026
 43 S B 7022
 44 S B 7250
 45 S B 6016
 46 S B 6025
 47 S B 7353
 48 S B 7494
 49 S D 7007
 50 S B 7036
 51 S B 7165
 52 S B 7009
 53 S D 7006
 54 S B 7342
 55 2-1区
 56 2-1区
 57 2-1区
 58 2-1区
 59 S M 7007
 60 S K 8372
 61 S K 7020
 62 S B 7246
 63 S B 7735
 64 S B 7716
 65 S B 7716
 66 S B 7578
 (1:2)

