



1

804  
(2:3)



2

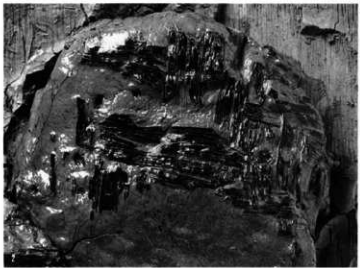


1

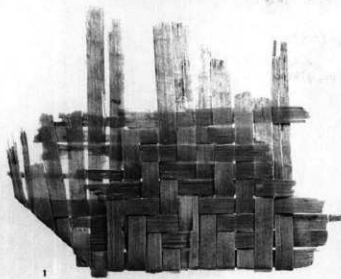
806  
(2:3)



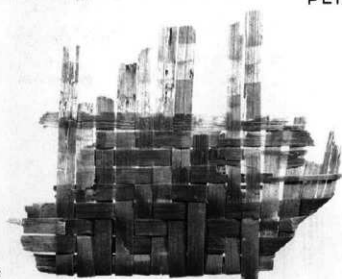
2



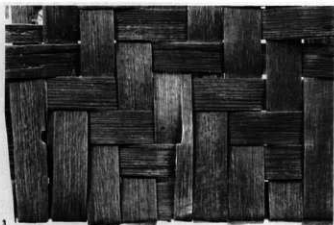
910(2:3)



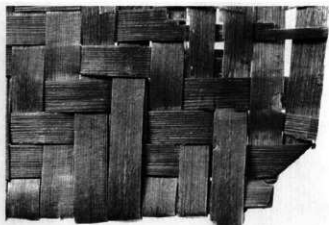
1



2



3



4

911(1:2)



1



1



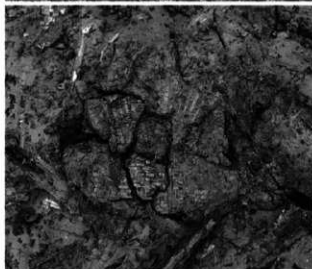
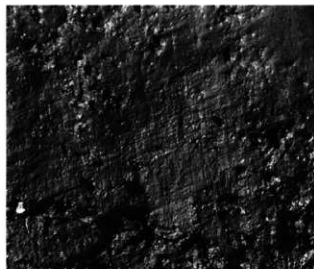
2



2

915(1:2)

916(1:2)





928(1:4)



929(1:4)



930(1:4)



931(1:8)



933(1:8)



935(1:8)



932(1:8)



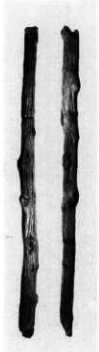
934(1:8)



940(1:8)



938(1:8)



939(1:8)



941(1:4)



942(1:8)



946(1:8)



943  
(1:4)



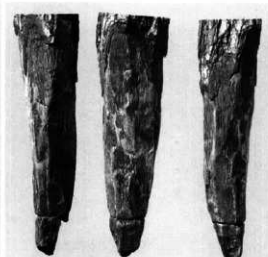
945(1:8)



948(1:8)



944(1:8)





947(1:8)



950(1:8)



949(1:8)



951(1:4)



952(1:4)



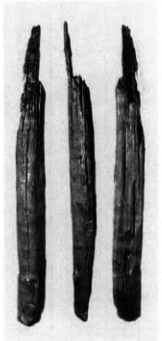
954  
(1:8)



956(1:8)



955(1:8)



958(1:8)



957(1:8)



960  
(1:8)



959  
(1:8)



961(1:8)



962(1:4)



966(1:4)



964(1:4)



965(1:8)



963  
(1:4)



968(1:8)



970(1:4)



969(1:8)



973  
(1:8)



974  
(1:4)



975(1:4)

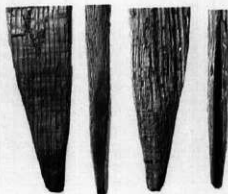


976(1:8)



972(1:8)

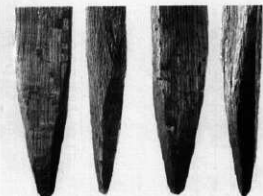
977(1:8)



978(1:8)



979(1:8)



980(1:8)



981 (1:8)



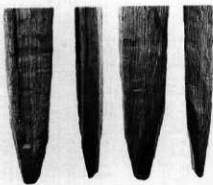
982 (1:4)



983 (1:8)



985  
(1:8)



984 (1:8)



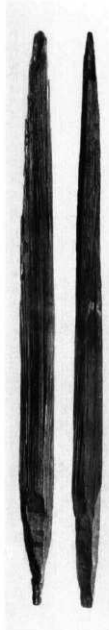
987 (1:8)



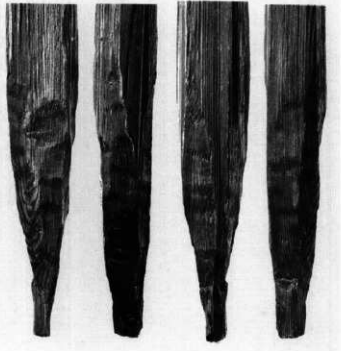
986 (1:8)



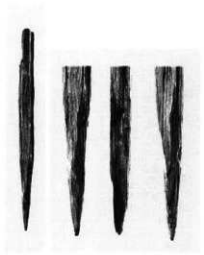




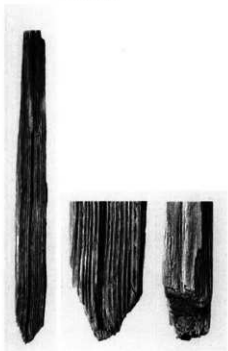
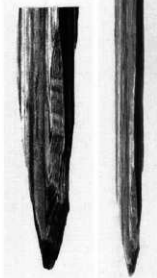
988 (1:8)



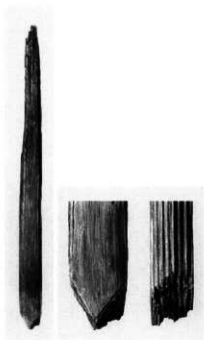
992  
(1:8)



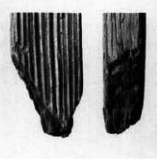
989  
(1:8)



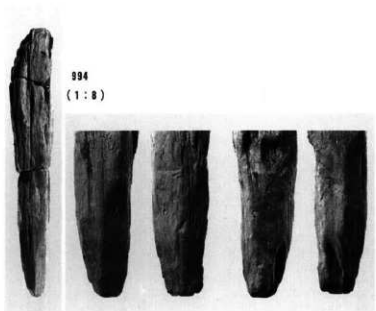
991 (1:8)



993 (1:8)

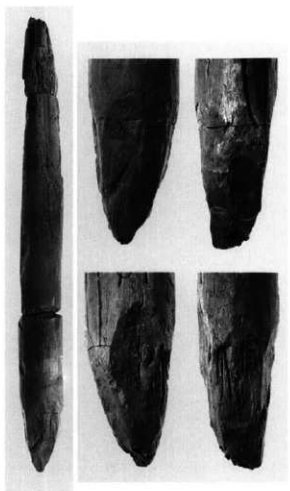


990 (1:8)

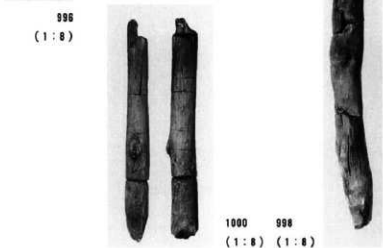


994  
(1:8)

995  
(1:8)

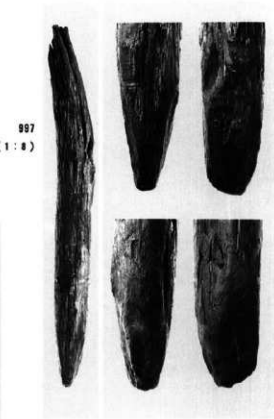


997  
(1:8)



996  
(1:8)

1000 998  
(1:8) (1:8)

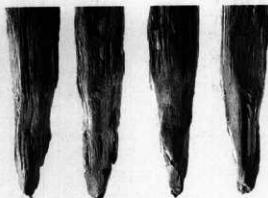




999  
(1:8)



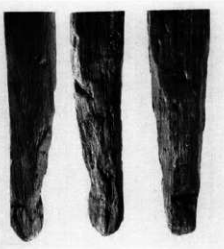
1001  
(1:8)



1003  
(1:8)



1002 (1:8)

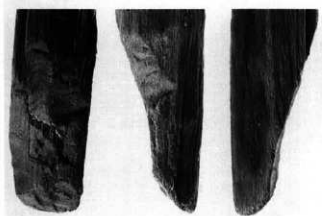


1004  
(1:8)

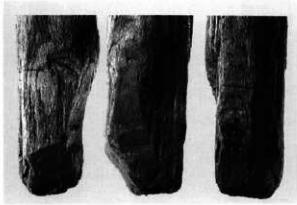




1005 (1:4)



1007  
(1:8)



1008  
(1:8)

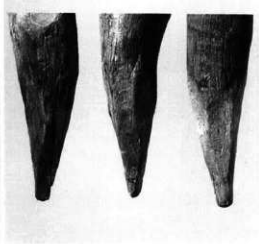


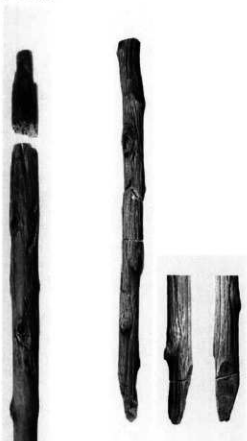
1009  
(1:4)



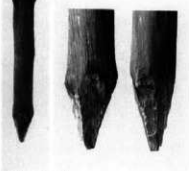
1010  
(1:4)

1006 (1:8)

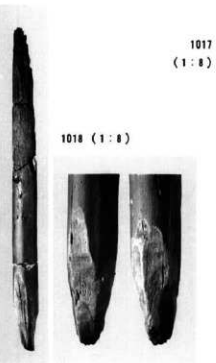




1012 (1:4)

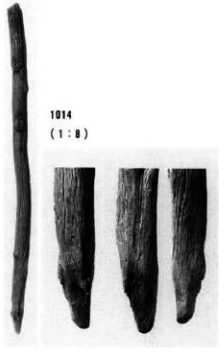


1011 (1:8)



1017 (1:8)

1018 (1:8)



1014 (1:8)

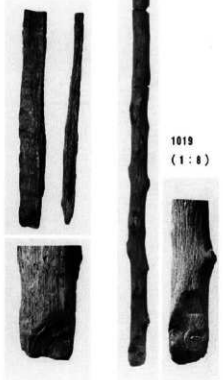
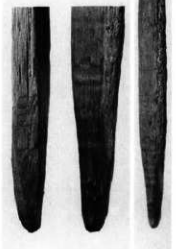


1013 (1:8)



1015 (1:8)

1016 (1:8)



1019 (1:8)



1021 (1:8)

1020 (1:8)



1022 (1 : 8)



1023  
(1 : 8)



1024  
(1 : 8)



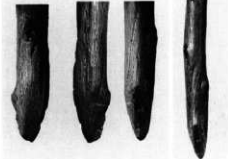
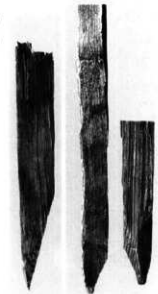
1027  
(1 : 8)



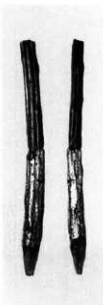
1025 (1 : 4)



1026  
(1 : 8)



1028 (1 : 4)



1029 (1 : 8)



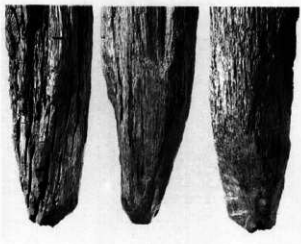
1030 (1 : 8)



1031 (1 : 8)



1033 (1:8)



1034 (1:8)



1032 (1:8)

1036 (1:8)



1035 (1:8)



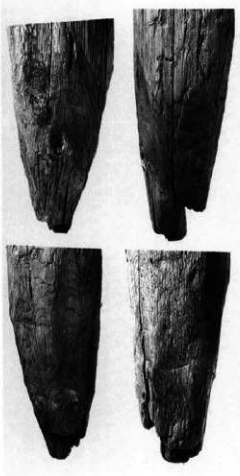
1038  
(1:8)



1041  
(1:8)



1040  
(1:8)



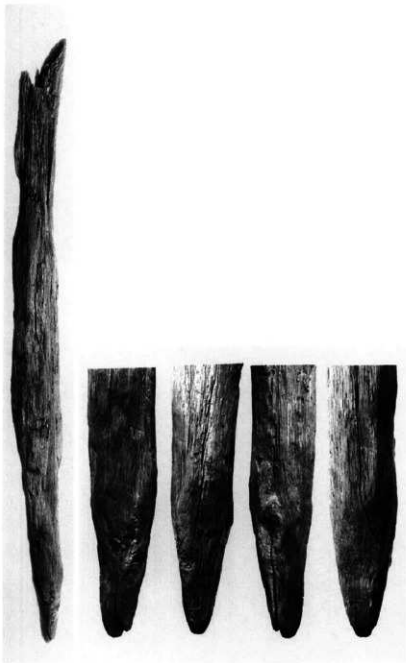
1039 (1:8)



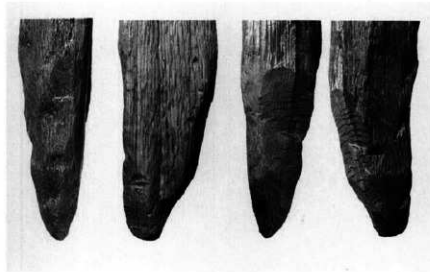
1037  
(1:8)







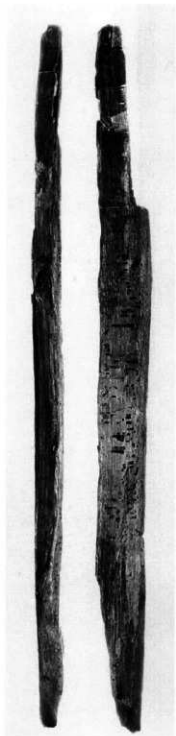
1042 (1:8)



1044  
(1:8)



1043 (1:8)



1045  
(1:8)

1046 (1:8)



1047 (1:8)

1048  
(1:8)1049  
(1:4)

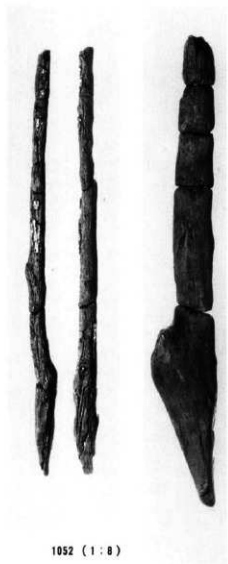
1056 (1:4)



1050 (1:8)



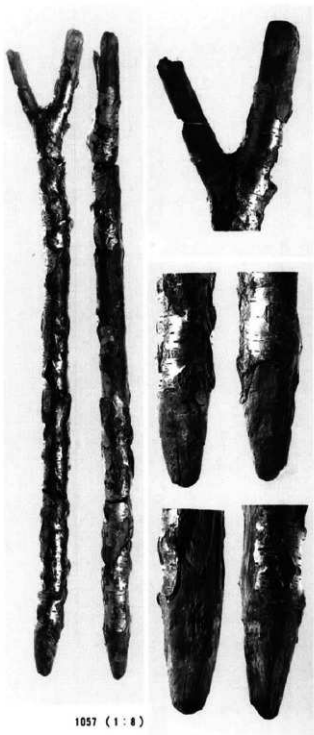
1051 (1:4)



1052 (1:8)



1053 (1:8)



1057 (1:8)



1054 (1:4)



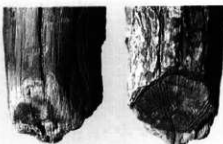
1055 (1:4)



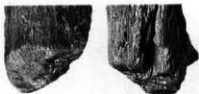
1058  
(1 : 8)



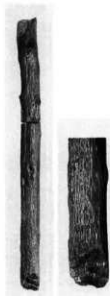
1060  
(1 : 8)



1059 (1 : 8)



1061 (1 : 8)



1062 (1 : 8)



1063 (1 : 8)



1064 (1 : 4)



1065 (1 : 4)





1066  
(1:8)



1067  
(1:8)



1071 (1:4)



1068  
(1:8)



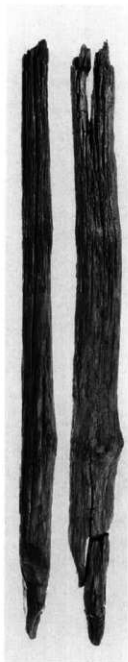
1070  
(1:8)



1069  
(1:8)



1072  
(1:4)

1073  
(1:12)

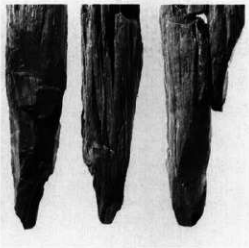
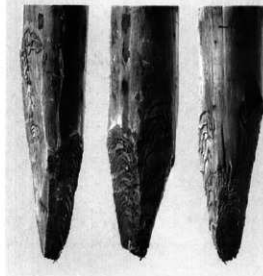
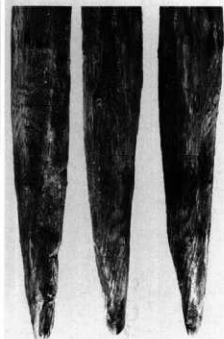
1074 (1:8)



1076 (1:8)



1075 (1:4)

1077  
(1:8)



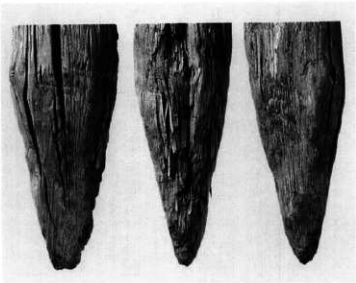
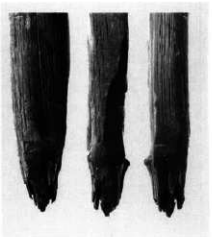
1081  
(1:12)



1078  
(1:8)



1080 (1:8)

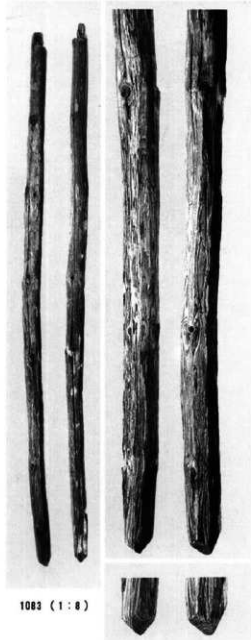


1079  
(1:8)



1082  
(1:8)



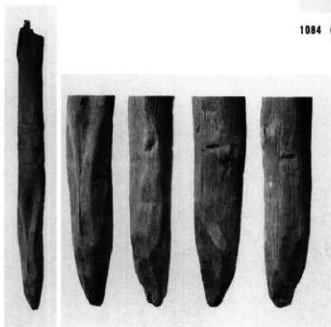


1083 (1:8)

1084 (1:8)



1085 (1:8)

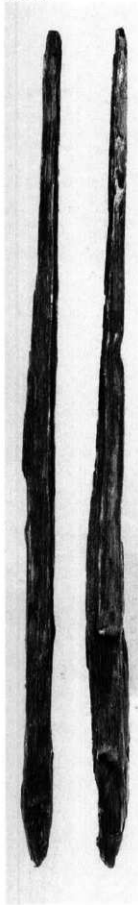


1087 (1:8)



1088 (1:8)





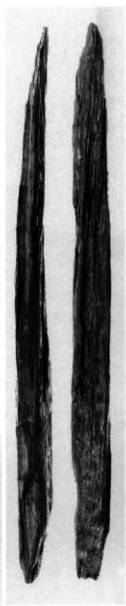
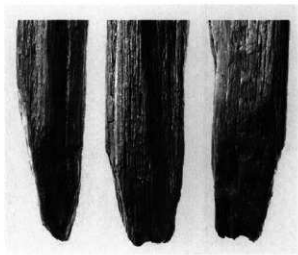
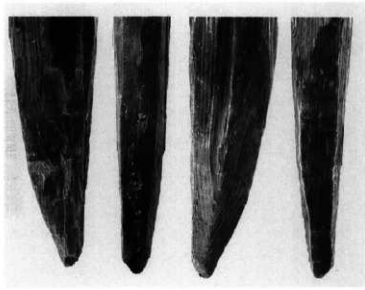
1089 (1:0)



1090  
(1:0)



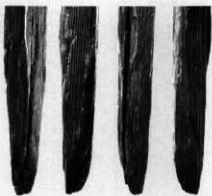
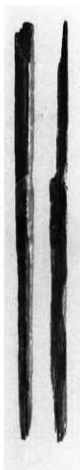
1093 (1:0)



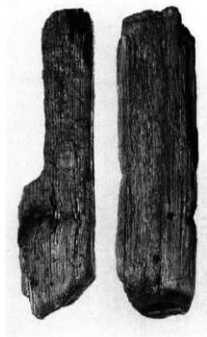
1092 (1:0)



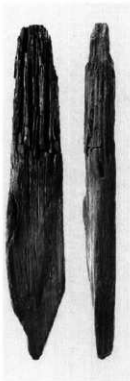
1094  
(1 : 8)



1095  
(1 : 8)



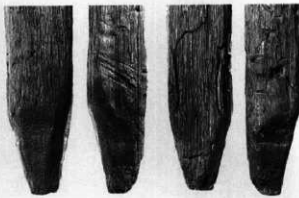
1091 (1 : 4)



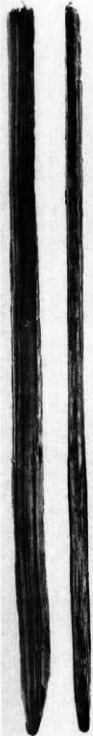
1097  
(1 : 4)



1096  
(1 : 8)



1098  
(1 : 8)



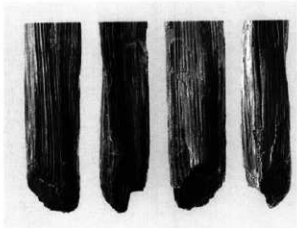
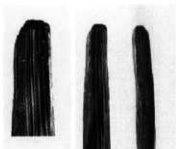
1099  
(1:8)



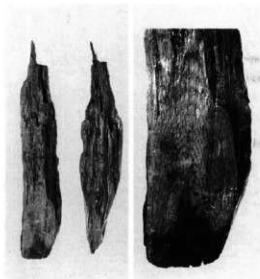
1101  
(1:8)



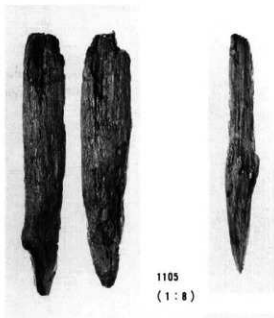
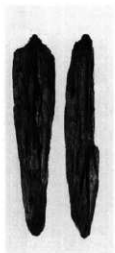
1102 (1:8)



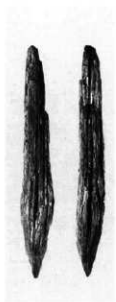
1100 (1:8)



1103 (1:8)

1105  
(1:8)1104  
(1:8)

1107 (1:8)



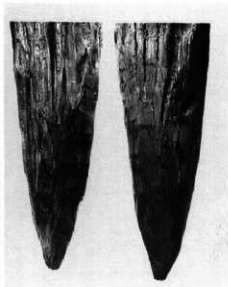
1106 (1:8)



1109 (1:8)

1110  
(1:4)

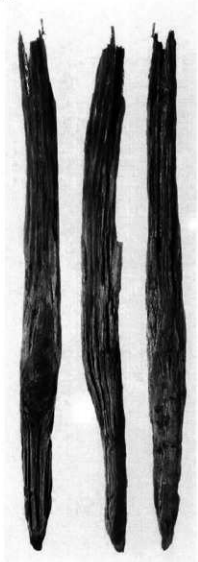
1108 (1:8)



1111 (1:4)



1112 (1:8)



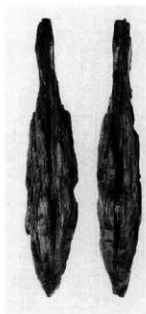
1113 (1:8)



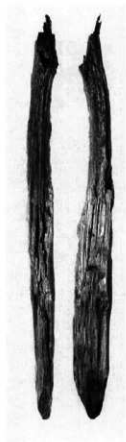
1115 (1:8)



1116 (1:8)



1114 (1:8)



1117 (1:8)

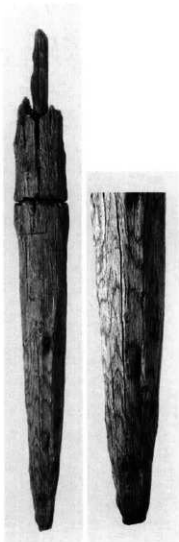


1118 (1:8)



1119 (1:8)





1120 (1:8)



1121  
(1:1)



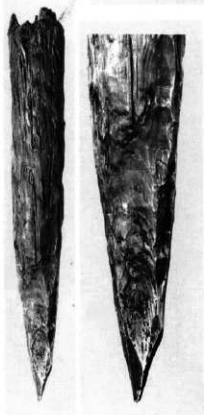
1124 (1:8)



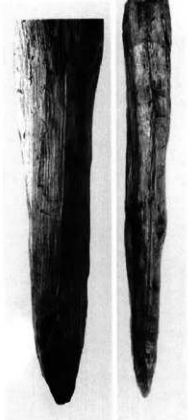
1123  
(1:8)



1122 (1:8)



1126 (1:8)



1125 (1:8)



1127  
(1:0)



1130 (1:4)



1129 (1:4)



1128  
(1:0)



1131  
(1:0)



1132 (1:0)



1133 (1:0)



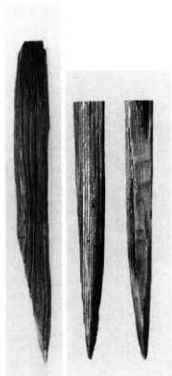
1135 (1:4)



1136 (1:0)

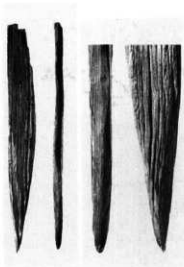


1134 (1:0)



1137 (1:8)

1138  
(1:8)



1139 (1:4)



1140 (1:4)

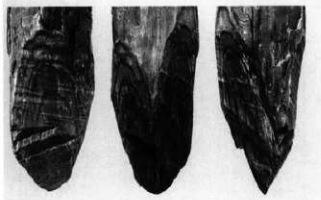


1141  
(1:3)



1143  
(1:4)

1142  
(1:4)



1145  
(1:8)



1144 (1:8)



1147 (1:4)



1148 (1:4)







1148  
(1:8)



1149  
(1:4)



1150  
(1:4)



1151  
(1:4)



1152  
(1:4)



1153  
(1:4)



1155  
(1:4)



1156  
(1:4)



1157  
(1:4)



1158  
(1:3)



1159  
(1:8)



1160  
(1:4)



1161  
(1:4)



1162  
(1:4)



1163 (1:4)



1164 (1:2)



1165  
(1:3)



1166  
(1:3)

## 報告書抄録

書名	中央自動車道長野線埋蔵文化財発掘調査報告書 15
副書名	石川条里遺跡
巻次	長野市内その3
シリーズ名	(財)長野県埋蔵文化財センター発掘調査報告書
シリーズ番号	25
編・著者	市川隆之・白居直之・町田勝則・西山克己・賛田明・市川桂子
編集・発行機関	財団法人 長野県埋蔵文化財センター
所在地	〒387 長野県更埴市屋代260-6 TEL026-274-3891
発行年月日	1997年3月3日

所在遺跡名	石川条里遺跡	長野県埋蔵文化財センター遺跡記号		BIS
遺跡所在地	長野県長野市篠ノ井塩崎	長野県市町村コード	20201	
遺跡位置	北緯 36° 33' 13" 東経 137° 6' 25" 標高 356.00～357.00m			
発掘調査期間	1988年5月21日～同年12月17日、1989年4月11日～同年12月21日、1990年9月14日～同年12月7日、1991年4月8日～5月30日			
調査面積	70.170㎡			
発掘調査原因	中央自動車道長野線建設に伴う発掘調査			
主な遺構と時代・時期	集落跡 竪穴住居・土坑・遺跡集中(縄文前期、弥生後期)・土坑(平安～中世) 館・塚(中世) 祭祀跡 土坑・溝・遺跡集中(古墳前期) 水田跡(弥生中期・後期、古墳前期・後期、平安、中世、近世)			
主な遺物	土器・須恵器・陶磁器・石器・木器・土器装飾具・土製ミニチュワ・石製装飾具 鉄製品・青銅製品・ガラス小玉等			

00長野県埋蔵文化財センター発掘報告書 25

中央自動車道長野線埋蔵文化財発掘調査報告書15

—長野市内その3—

石川桑里遺跡

第3分冊

発行 平成9年(1997)3月31日発行  
発行者 日本道路公団名古屋建設事務所  
長野県教育委員会  
00長野県埋蔵文化財センター  
〒387 長野県更埴市屋代260-6  
TEL 026-274-3891  
FAX 026-274-3892  
印刷 信毎書籍印刷株式会社