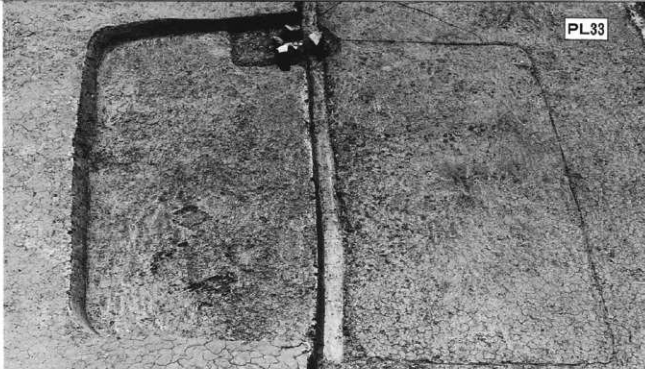


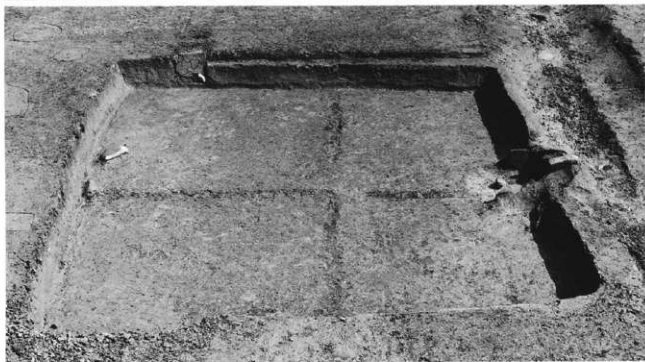
古代遺構 2

PL33

SB2(東より)



SB3(南より)

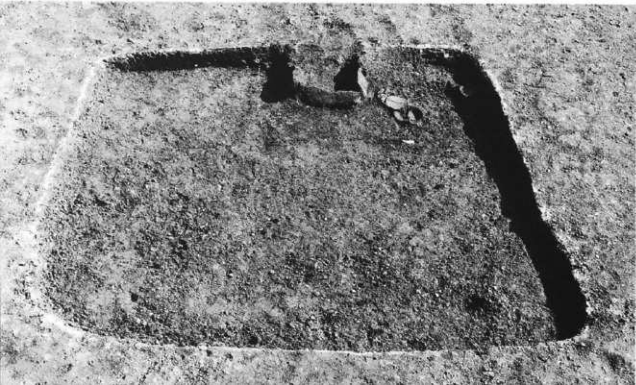


左上：SB3 カマド  
左下：SB3 獣骨出土状態  
右：SB5(南より)





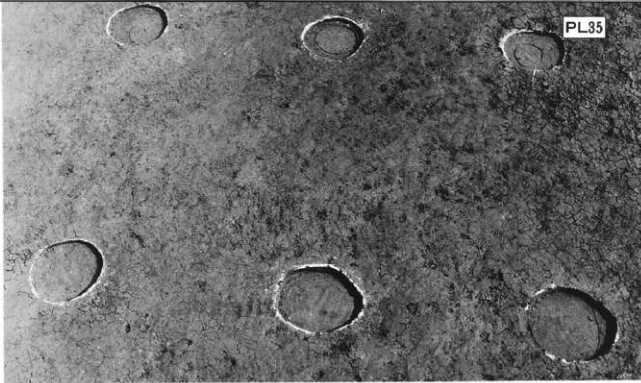
右：SB501炭化材出土  
状態  
左：SB503(東より)



古代遺構 4

PL35

ST3(東より)



ST7(南より)



外側ST8 内側ST12  
(西より)



PL.36

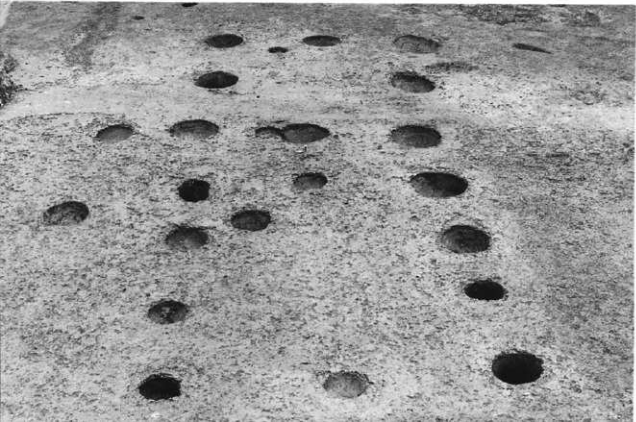


古代遺構 5

ST15(西より)



外側ST16 内側ST17・  
ST18  
(北より)

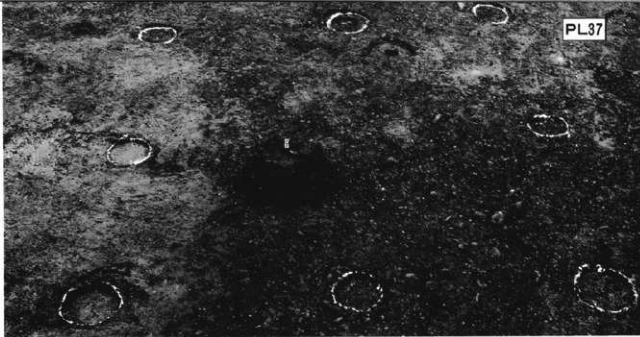


奥側ST28 手前側ST29  
(南より)

古代遺構 6

PL37

ST506(南より)



ST508(西より)



ST510(南より)

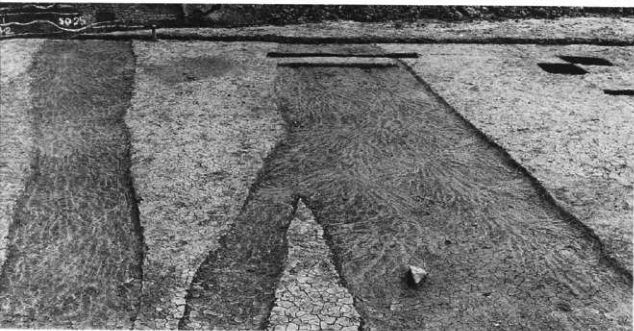


PL.38



古代遺構 7

左: SA502(東より)  
右: SD10(南より)

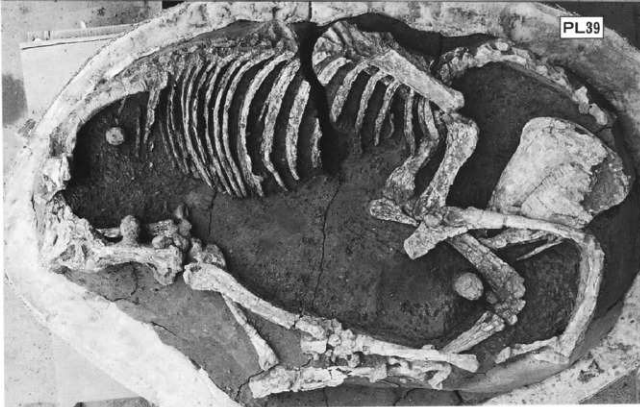


左側SD4 右側SD25  
(南より)



上側SD502 下側SD507  
(北より)

SK1209出土馬骨



左：SK1195(南より)  
右：SK1209馬骨出土状態  
(東より)



左：SX501(南西より)  
右：SX501下部  
(南西より)



PL40



近世遺構

左：地藏菩薩立像  
像高32cm  
造立年不詳

右：石地蔵  
像高90cm  
造立寛文二壬寅  
(1662)年

左 写真提供  
明科町教育委員会

右 山崎庄治氏宅地内



ST1(東より)

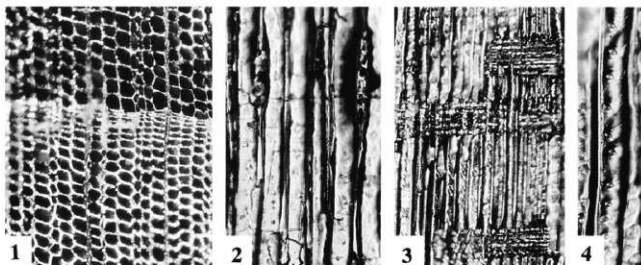


左：ST1-P<sub>1</sub>断面  
(東より)

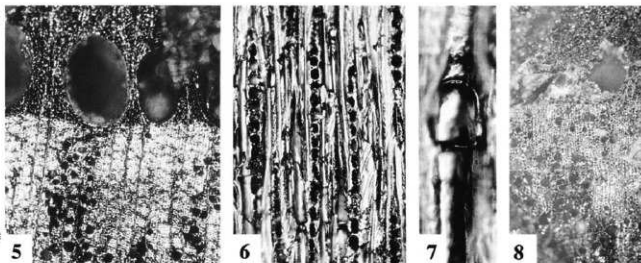
右：ST1-P<sub>2</sub>断面  
(東より)



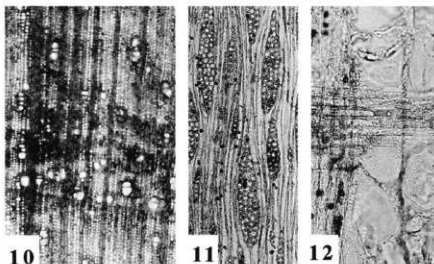
- 1～4 カヤ  
SH1206出土  
1：横断面  
2：接線断面  
3・4：放射断面



- 5～8 クリ  
SB102・555・558・  
566・594出土  
5・8：横断面  
6：接線断面  
7：放射断面



- 9 ケヤキ  
SH1111配石群  
出土  
9：横断面



- 10～12 カエデ属  
SK3496出土  
10：横断面  
11：接線断面  
12：放射断面

5・8～10：×50、1・3・11：×100、2・6・7・12：×200、4：×500

SB101(1-3)



1



2



3

左上 : SB102(1)  
左下 : SB555(1)  
右 : SB102(2)



1



2



1

左 : SB559(1)  
右上 : SB558(1)  
右下 : SB557(1)



1



1



1

SB560(1・3)



3



1

SB566(1・3・4・6-8・10)



6



3



7



10



4



8



1



1



2



1



1

左 : SB562(1)  
 右上 : SB591(2)  
 右中 : SB591(1)  
 右下 : SB583(1)



1



1



2

左 : SB572(1)  
 右上 : SB592(1)  
 右下 : SB592(2)



1

SB599(1)

左: SH17 (1)  
右: SB583(3)



1

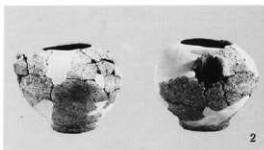


3

左: SH17 (2-3)  
右: SB580(1)



3



2



1

左: SH508(1)  
右: SH555(1)



1



1



左：SH607(1)  
中：SH658(1)  
右：SH686(1)



左：SH644(1)  
右：SH686(3)



左上：SH648(1)  
左下：SH693(1)  
右：SH686(2)



左：SH802(1)  
右：SH952(1)

左 : SH784 (1)  
右上 : SH794 (1)  
右下 : SH1048(1)



1

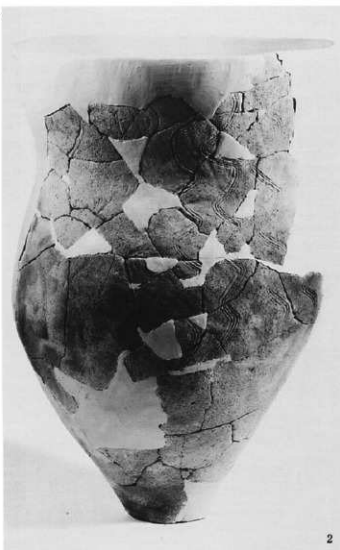


1



1

SH979 (1・2)



2



1



1



1

左: SH1081(1)  
右: SH1082(1)



2



1

左: SH1215(2)  
右: SH1204(1)



1



1

左: SH1228(1)  
右: SH1232(1)



1



1

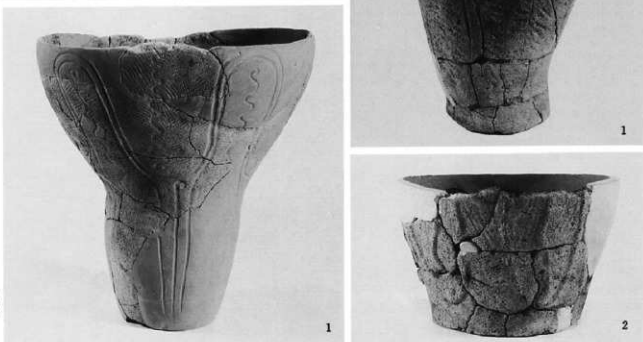
左: SH1217(1)  
右: SK2541(1)



左：SK3071(1)  
 中：SK2018(1)  
 右：SK2232(1)



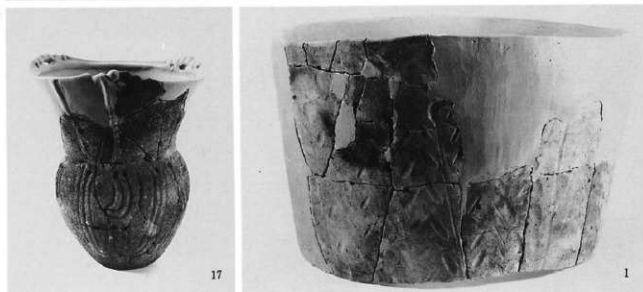
左：SK2813(1)  
 右：SK2813(2)



左：SK3142(1)  
 右：SK3266(1)



左：遺構外(17)  
 右：SQ501(1)



SQ1 (A・1・2・5・7)



A



5



1

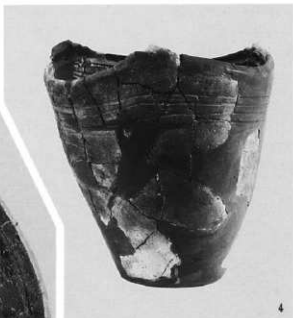


2



7

SQ 1 (3・4・9-12)



10

11



1



5



8

左：SQ 2 (1)  
右：遺構外 (5・8)



1



1



6

左：SQ503 (1)  
右：遺構外 (1・6)



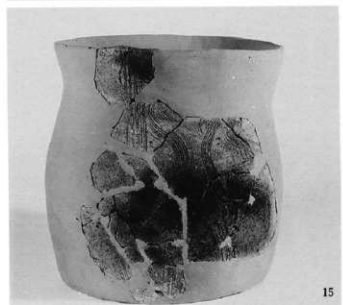
2



3

遺構外 (2・3)

遺構外 (7・11-13・  
15・18-20・25)



遺構外  
(16・21-24・26・27・29・30)



16



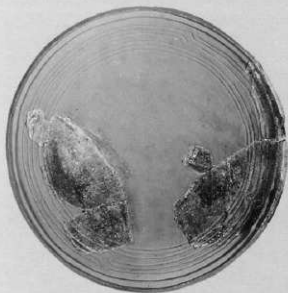
21



26



22



29



30



27



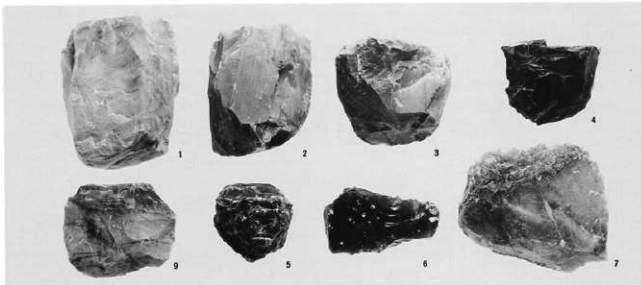
23



24

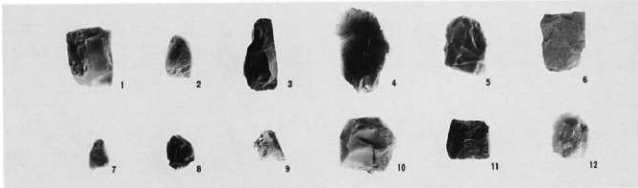
## 石核

1. S B577
  2. S B570
  3. S B590
  4. S B558
  5. (E)L-14
  6. S H581
  7. S B566
  9. S K2321
- (1:2)



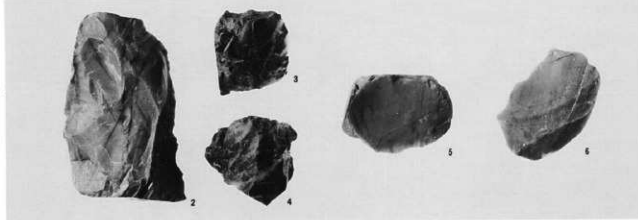
## 剥片・碎片(剥片A類)

1. 遺構外Z
  2. S H652
  3. S B558
  4. S H1181
  5. (C)S-9
  6. 遺構外Z
  7. (E)L-12
  8. (E)L-12
  9. S B577
  10. (E)L-24
  11. S H555
  12. S Q503
- (1:2)



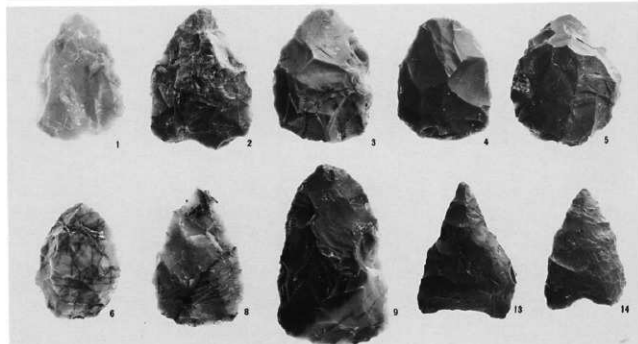
## 剥片・碎片

2. 遺構外Z
  3. (E)S
  4. (E)S
  5. S B558
  6. S B558
- 接合  
接合  
(1:1)

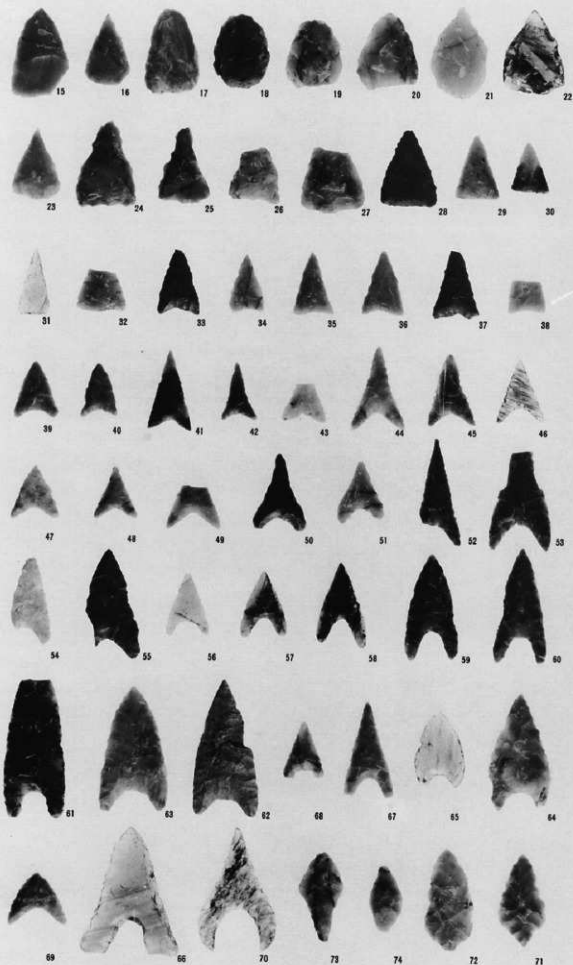


## 石鏃1

1. (E)L-K5
  2. S B553
  3. (E)M-18
  4. S B110
  5. S H826
  6. S H550
  8. S H527
  9. S Q501
  13. (E)M-22
  14. (E)L-K5
- (1:1)



## 石鏃 2



15. S B 557
16. 遺構外
17. (E)L-14
18. S H 549
19. S H 1217
20. SH1111配石群
21. S Q 501
22. S B 566
23. S B 566
24. S B 571
25. S B 566
26. S B 555
27. S H 506配石群
28. S H 742
29. S B 563
30. S H 555
31. S B 555
32. S B 566
33. S B 555
34. (E)L
35. S H 555
36. S H 560
37. S E 102
38. S B 562
39. S H 506配石群
40. S K 1316
41. (E)L
42. S H 1129
43. S B 562
44. S H 1111配石群
45. S B 566
46. S B 566
47. S H 1091
48. S H 824
49. 遺構外 Z
50. S B 553
51. (E)M-18
52. S B 580
53. S B 102
54. S B 562
55. S B 566
56. (E)L-J 7
57. (E)L-7
58. S B 562
59. S B 572
60. S Q 501
61. S B 570
62. S B 563
63. (E)M
64. S B 561
65. (E)L-H11
66. (E)L-9
67. S H 751
68. S B 566
69. S H 818
70. S H 817
71. S B 555
72. S B 555
73. (E)L-3
74. S B 562

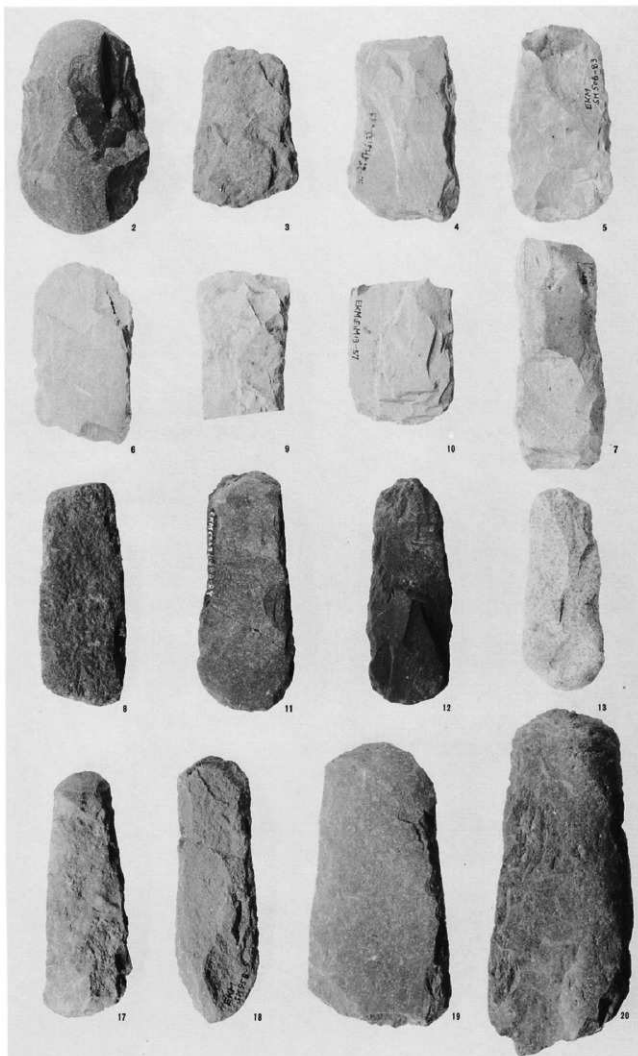
(1:1)



## 打製石斧 1

2. S B594
3. S B581
4. S H552
5. S H506配石群
6. S B580
7. S H698
8. (E)L-J 11
9. S H1111配石群
10. (E)M-13
11. S B560
12. (E)L-I 13
13. S B599
17. S B559
18. S H958
19. (E)L-L10
20. S B574

(1:2)



## 打製石斧 2

14. (E)L-23  
 15. (E)L-3  
 16. (E)L-3  
 21. (E)L-24  
 22. SH808  
 23. SQ501  
 24. (E)L-12  
 25. (C)S-24  
 26. SQ501  
 27. SH738  
 28. SQ503  
 29. (E)L-L 8  
 30. SH549  
 31. SQ501  
 33. SH813  
 37. (E)

(1:2)



14



15



16



23



21



22



24



25



26



27



29



31



28



30



33

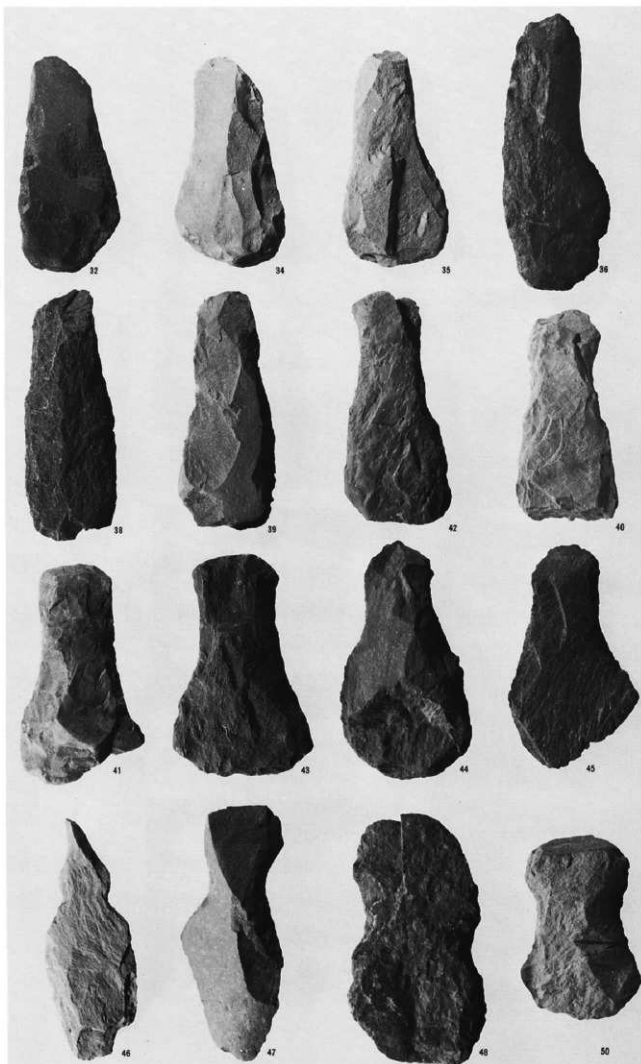


37

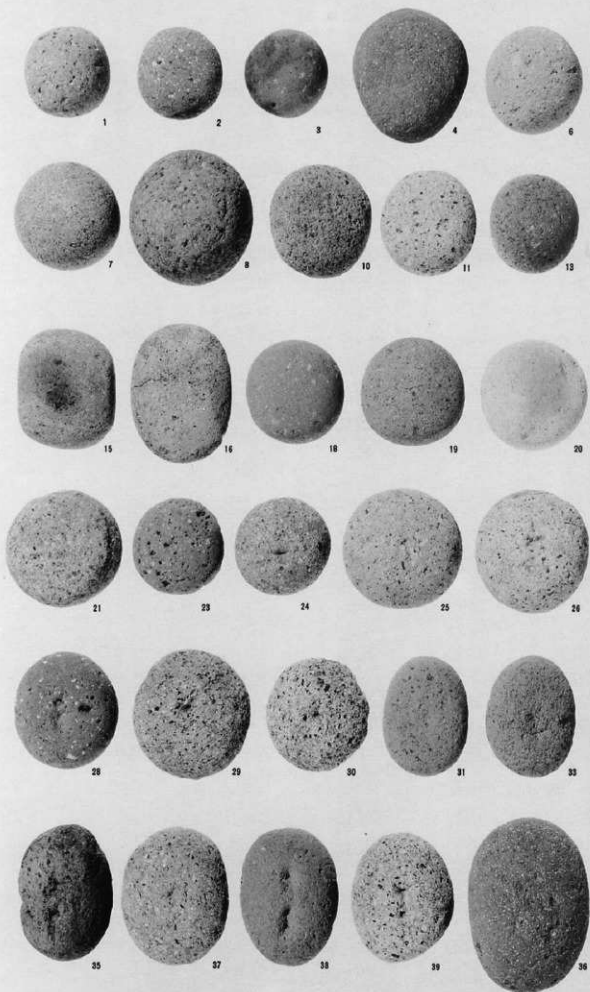
## 打製石斧 3

32. (E)L-13  
 34. (E)L-3  
 35. (E)L-3  
 36. SB580  
 38. SB584  
 39. SK2043  
 40. SH824  
 41. (E)L-J 11  
 42. SH590  
 43. (E)L-L 7  
 44. SB580  
 45. SQ503  
 46. (E)L-L 6  
 47. (E)L-8  
 48. (E)M-16  
 50. (E)L-9

(1:2)



## 磨石・凹石

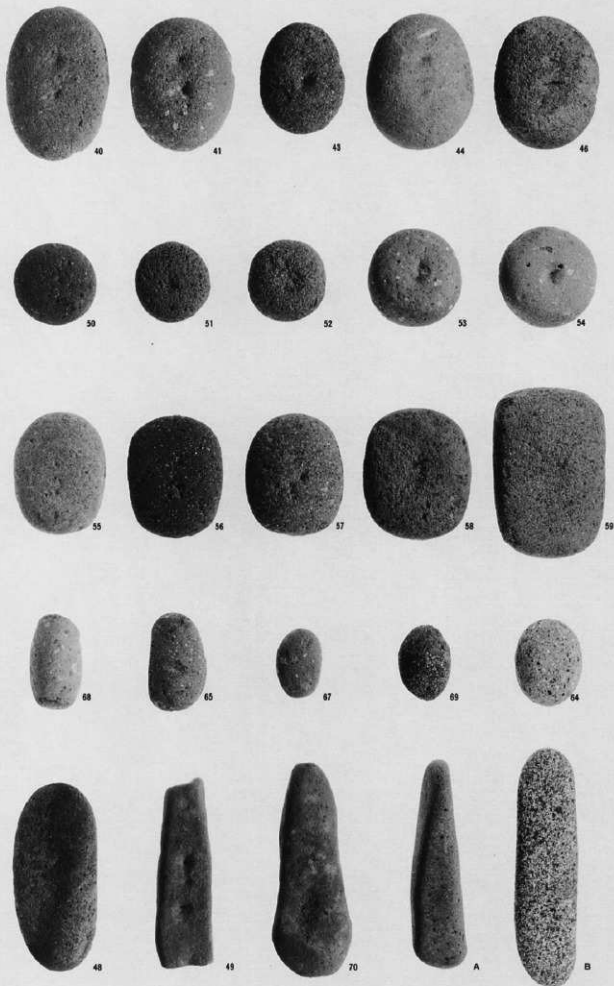


1. (E)L-L 5
2. (E)L-L 9
3. SH1220
4. SB590
6. SB571
7. (E)M-19
8. SH578
10. (E)L-K 5
11. 遺構外 Z
13. SB566
15. SB594
16. SB555
18. (E)L-L 8
19. (E)M-13
20. (E)L-L 5
21. SQ501
23. (E)L-12
24. (E)L-T16
25. SB555
26. (E)M
28. SB591
29. (E)L-20
30. SH1210
31. SQ501
33. SB559
35. SB558
36. SH1067
37. (E)L-3
38. SH506配石群
39. SB559

(1:3)

## 凹石・敲石

40. (E)L-19  
 41. S Q 501  
 43. S B 566  
 44. S H 1205  
 46. S H 1222  
 48. S B 566  
 49. S B 599  
 50. S B 566  
 51. (E)L-9  
 52. S B 571  
 53. (E)L  
 54. S H 570  
 55. (E)L-K 9  
 56. S B 566  
 57. S H 506配石群  
 58. S B 566  
 59. S B 555  
 64. S B 555  
 65. S H 1206  
 67. S Q 501  
 68. S H 558  
 69. (E)L-24  
 70. S H 510配石群  
 A. S H 1074  
 B. S H 1067  
 (1:3)



## 多孔石

72. S K 3366  
 73. S B 101  
 74. S B 597  
 75. (E)L-J 7  
 76. (E)M-18  
 (1 : 6)

## 石皿

1. S B 580  
 2. S H 5  
 3. S H 517  
 4. S B 597  
 5. S H 559  
 6. S B 580  
 7. S H 526  
 8. S B 566  
 10. S H 510配石群  
 11. S H 575  
 14. S H 1059  
 16. S B 591  
 (1 : 6)



## 石皿

9. S B566  
 13. (E)M-22  
 12. S H1059  
 15. S Q 5  
 17. (C)S-24  
 18. (E)L-M 7  
 19. (C)S-9  
 20. S B587  
 21. (E)M-116  
 22. S B581  
 23. S H519  
 24. 遺構外Z  
 25. S H511配石群  
 26. (C)T-B20  
 28. S B566

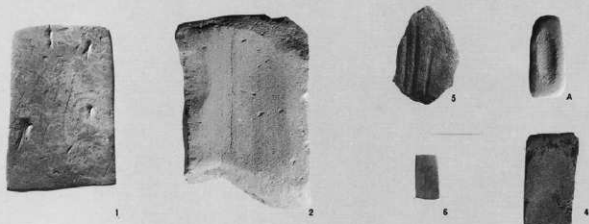
(1:6)



## 砥石

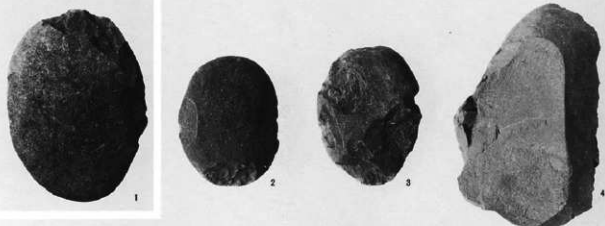
1. S K3398  
 2. S Q502  
 4. S Q101  
 5. S H506配石群  
 6. S B555  
 A. S B583

(1:6)



## 刃器

1. SB577
  2. SB573
  3. (E)L-24
  4. SQ501
  5. (E)L-11
  8. (E)L-6
  9. (E)M-18
  11. SH550
  13. (E)L-9
  14. (E)L-7
  15. (E)M-13
  16. SH558
  17. (E)L-O13
  18. (E)L-O13
  19. 遺構外Z
  20. SB555
  21. SB568
  22. SB559
  23. SB555
  24. 遺構外Z
- (1-16=1:2)  
(17-24=1:1)





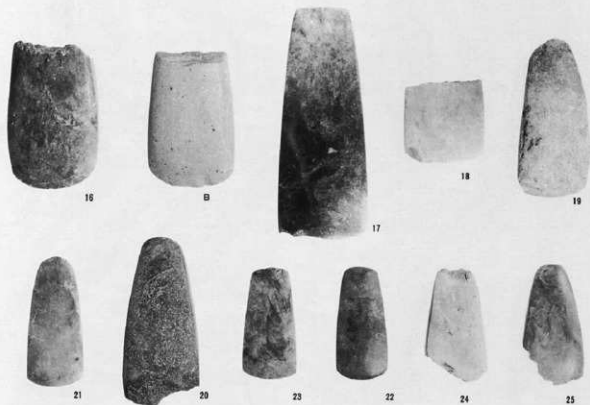
## 磨製石斧1

1. SB551
2. SH1005
3. SB559
4. SH1067
5. (E)M-22
6. SK2647
7. SB555
8. SK2006
9. SH672
10. (E)M-K13
11. (E)L-12
12. SB562
14. (C)T-B10
15. (C)T-B11
- A. SB559

(1:2)

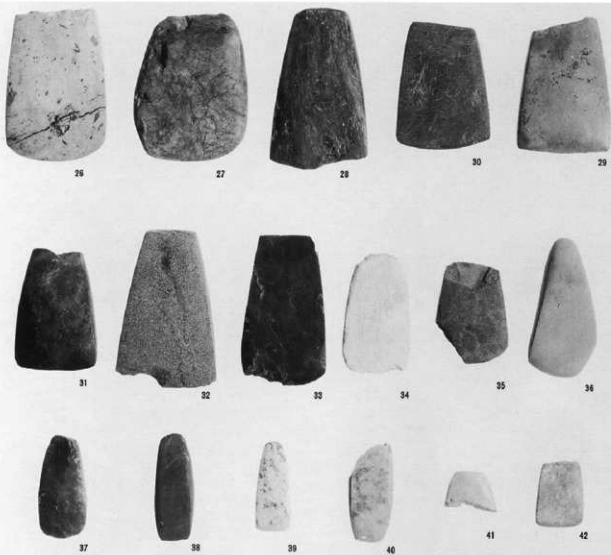


## 磨製石斧 2



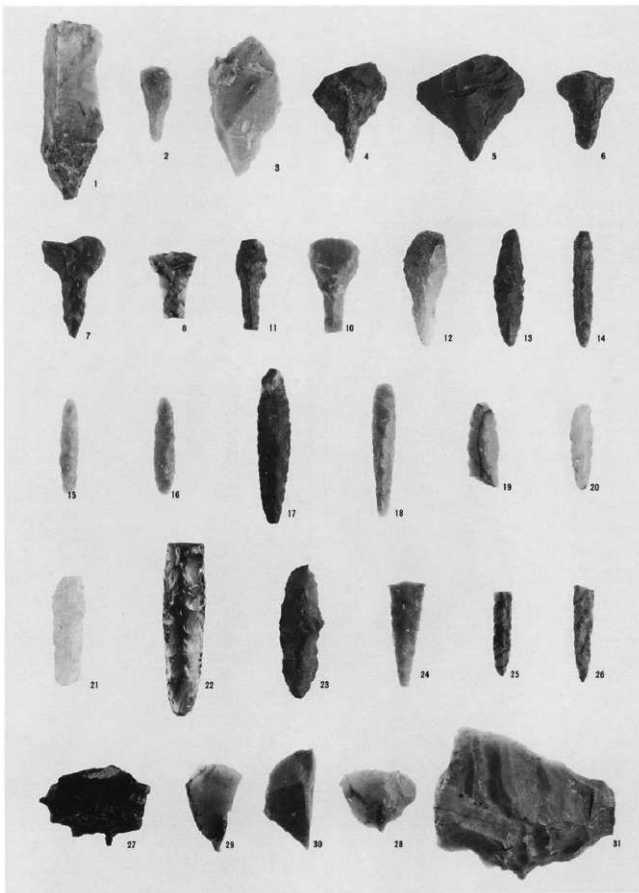
16. S B 555
17. S B 101
18. (C) T-A 9
19. S B 555
20. (E) M-B 18
21. S H 873
22. S K 2367
23. S B 555
24. S B 555
25. (E) L
26. S H 503
27. S B 558
28. S B 558
29. (E) M-B 18
30. (E) M-16
31. S B 555
32. S H 959
33. (E) M-22
34. (C) S-R 19
35. (C) N
36. S H 510配石群
37. (E) M-18
38. S H 933
39. (E) L-13
40. S B 566
41. S B 558
42. S B 102
- B. (E) M-21

(1:2)



石錐

1. (E)M-18
  2. 9トレンチ
  3. S Q 2
  4. (E)M-16
  5. S B580
  6. S H1144
  7. (E)L-K 5
  8. S H578
  10. S H627
  11. (E)L-14
  12. S B571
  13. (E)M-18
  14. (E)M
  15. S B561
  16. S B555
  17. S B599
  18. S B594
  19. S H528
  20. S H1111配石群
  21. 遺構外Z
  22. S B560
  23. S B566
  24. S B580
  25. S H1158
  26. (E)L-G11
  27. S H944
  28. (E)L
  29. S B566
  30. (E)M-18
  31. S B594
- (1 : 1)



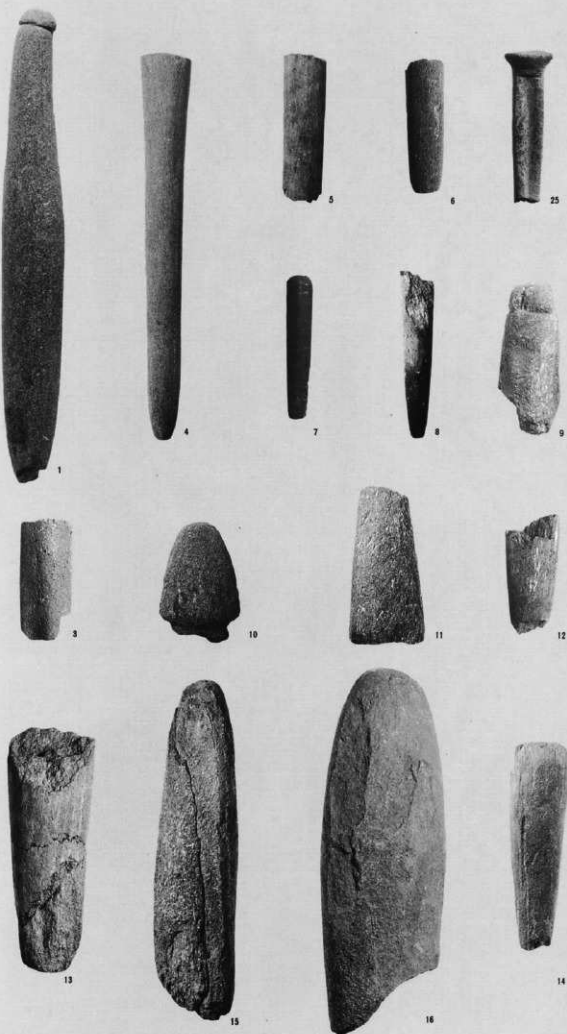
石錐・土錐

7. S H1111 } 石錐
  8. S B555 } 石錐
  9. S H1182 } 土錐
  10. S B555 } 土錐
  11. (E)L-23 } 土錐
- (1 : 2)



## 石棒・石刺1

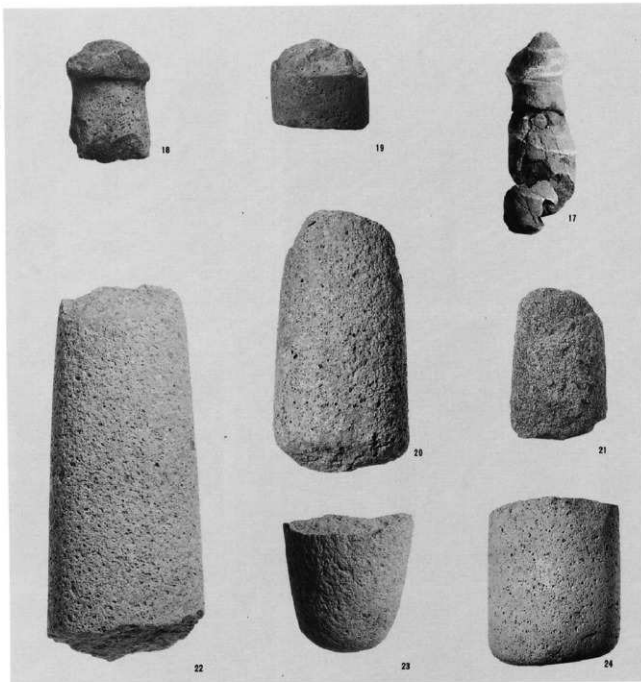
1. SH552
  3. SH1147
  4. SH18
  5. (B)W-6
  6. SB559
  7. (C)S-9
  8. SK2256
  9. SB595
  10. SH1074
  11. SB560
  12. (E)L-K 6
  13. SK2054
  14. SB574
  15. SH33
  16. SH506配石群
  25. SB594
- (1-4-9-25=1:2)  
(3-10-16=1:4)



石棒・石錐2

- 17. S Q 501
- 18. S B 573
- 19. 遺構外Z
- 20. S H 510配石群
- 21. S B 555
- 22. S H 504
- 23. S H 672
- 24. S H 33

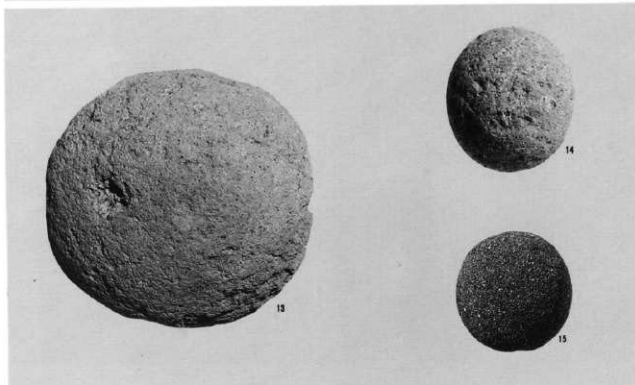
(1 : 4)



丸石

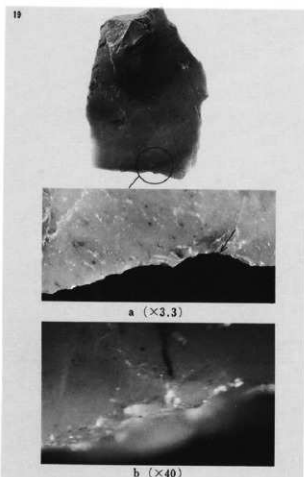
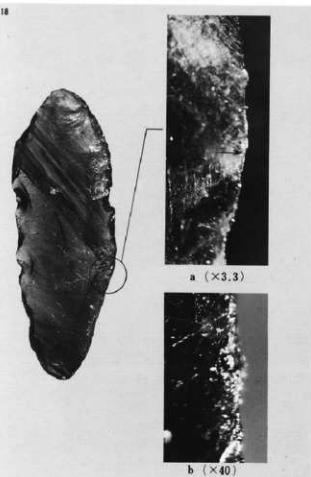
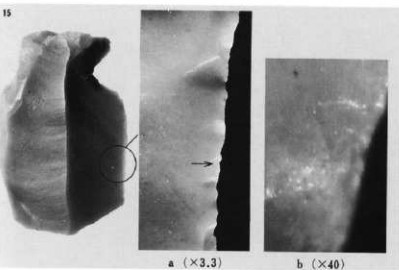
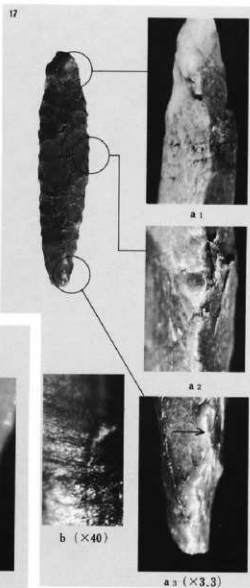
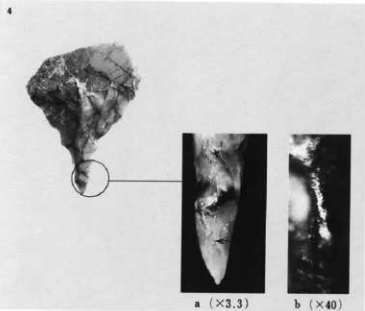
- 13. S H 956
- 14. S H 766
- 15. S H 1183

(1 : 4)



使用痕写真  
石錐の刃部

4. 遺構外出土  
17. S B 599



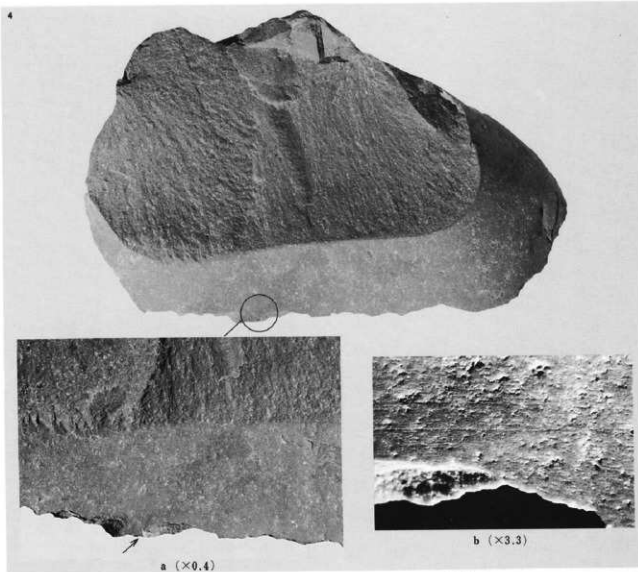
刃器(小形)の刃部

15-18-19. 遺構外出土

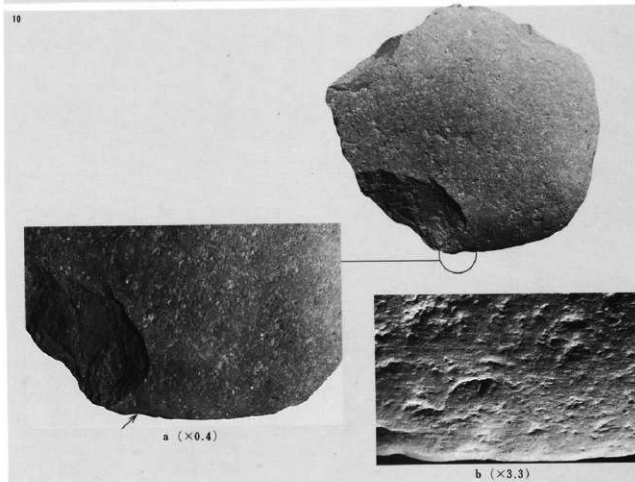
## 縄文石器17

使用痕写真  
刃器(大形)の刃部

4. SQ501



10. 遺構外出土

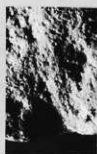


使用痕写真  
打製石斧の刃部

42. SH590

a ( $\times 0.4$ )b ( $\times 3.3$ )

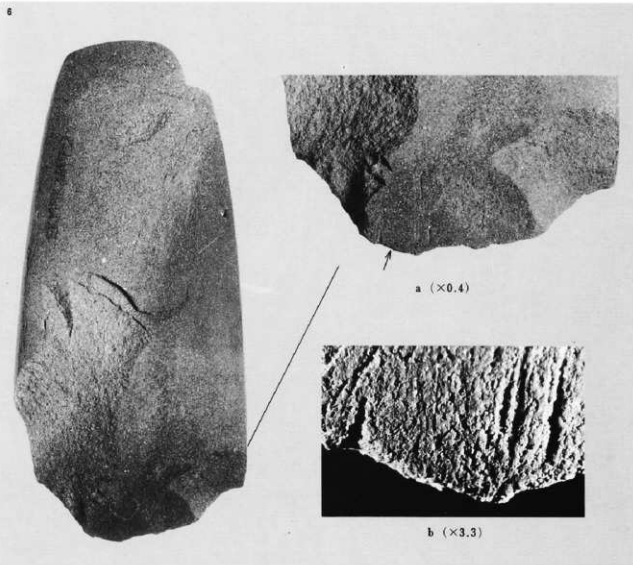
50. 遺構外出土

a ( $\times 0.4$ )b<sub>1</sub>b<sub>2</sub> ( $\times 3.3$ )b<sub>3</sub>



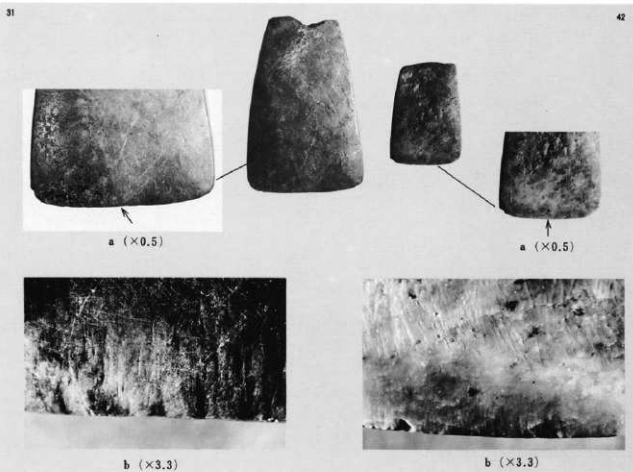
使用痕写真  
磨製石斧の刃部  
(伐採斧)

6. S K2647



(加工斧)

31. S B555  
42. S B102



使用・加工痕写真  
磨石

15. S B594

丸石

14. S H766

凹石

54. S H570

(4類)

41. S Q501

(4類)

24. 遺構外出土

(2類)

36. S H1067

(2類)

多孔石

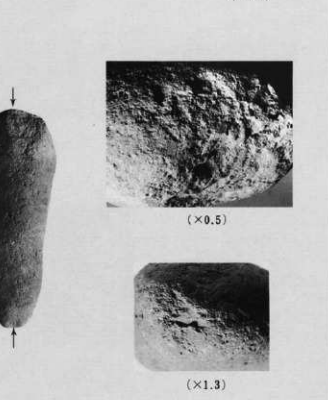
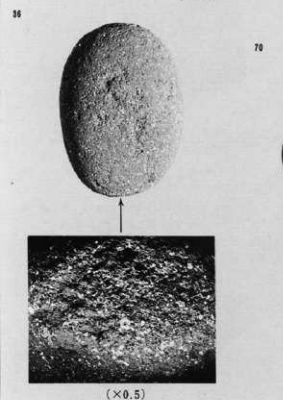
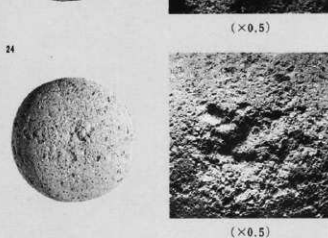
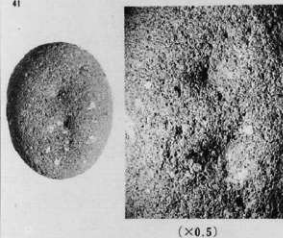
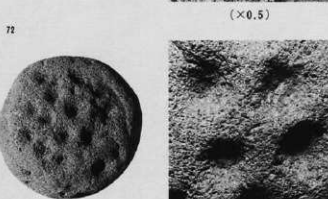
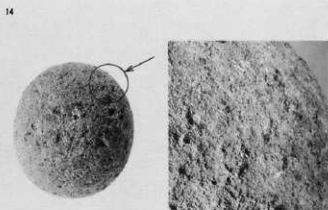
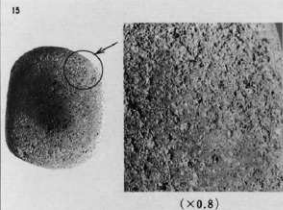
72. S K3366

(4類)

蕨石

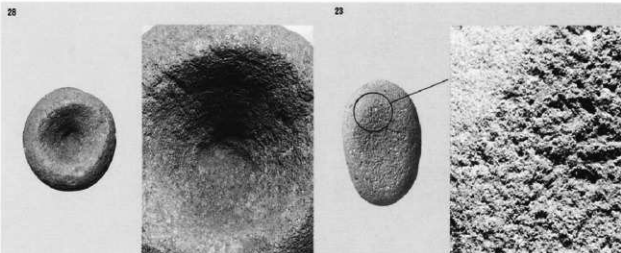
70. S H510配石群

(2類・5類)



使用・加工痕写真  
石皿

28. S B 566  
23. S H 519  
16. S B 591

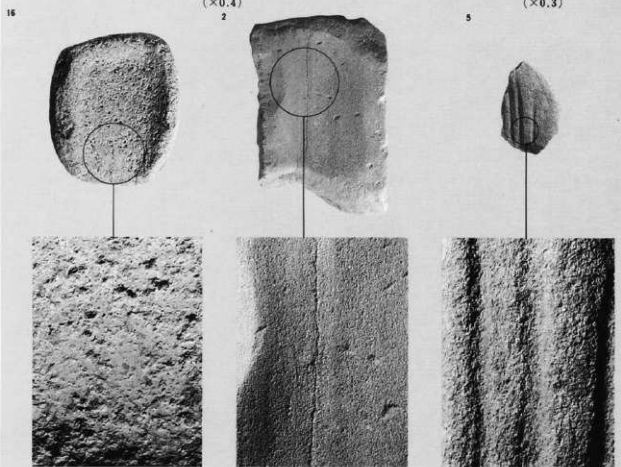


(×0.4)

(×0.3)

砥石

2. S Q 502  
5. S H 506



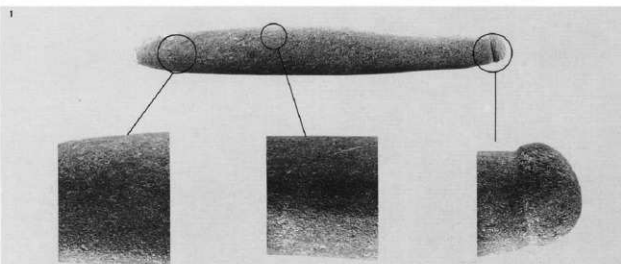
(×0.5)

(×0.2)

(×0.5)

石剣

1. S H 552

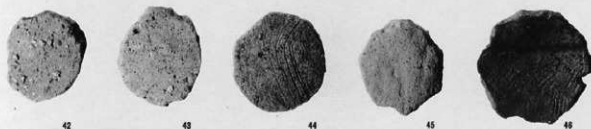
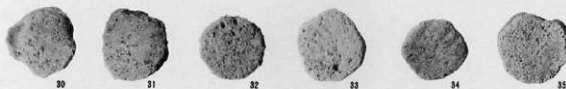


(実大)

## 土器片円板

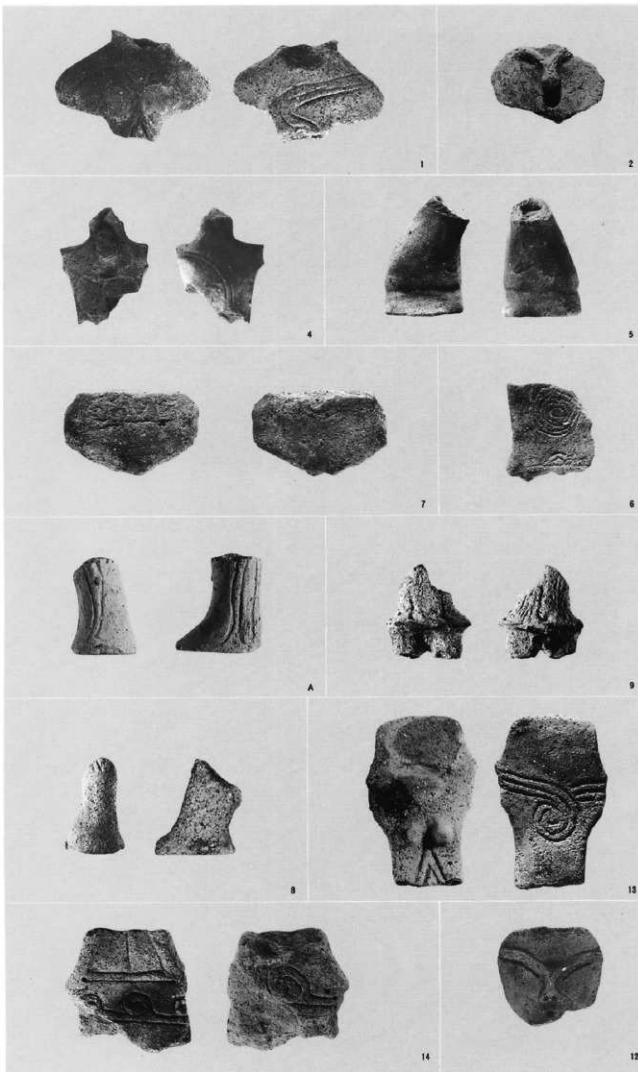
1. (C) X
2. S B566
3. S Q501
4. (B) X-3
5. (C) S
6. (C) S
7. (E) L-12
8. (E) L-14
9. S B566
10. S B557
11. S H742
12. S H518
13. S Q501
14. S K3308
15. (C) S
16. (E) L-8
17. S B561
18. S B566
19. S B580
20. S H770
21. S H1072
22. (B) X
23. (C) N
24. S B101
25. S B560
26. S B566
27. S H 5
28. S Q501
29. S K2265
30. S B561
31. S B566
32. S H709
33. S H717
34. S H735
35. S K2762
36. S B566
37. S B566
38. S B566
39. S H782
40. S H1203
41. (E) L
42. S B560
43. S H1185
44. S H742
45. S H809
46. S B581

(1:2)



## 土偶 1

1. S B101
  2. S B101
  4. S B553
  5. S B555
  6. S B555
  7. S B555
  8. S B559
  9. S B560
  12. S B563
  13. S B566
  14. S B566
  - A. S B558
- (1 : 2)



## 土偶 2

- 15. S B 566
- 16. S B 566
- 18. S B 566
- 20. S B 570
- 21. S B 570
- 23. S B 599
- 24. S B 599
- 25. S B 599

(1 : 2)



16



15



18



21

24

25



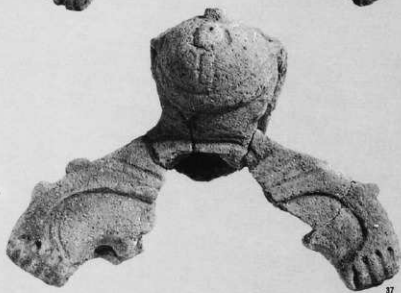
23



20

土偶 3

37. SH17  
(1 : 2)



## 土偶 4

28. S H 797  
 29. S H 808  
 30. S H 819  
 31. S H 974  
 32. S H 1021  
 33. S H 1158  
 34. S H 1222  
 35. S K 2258  
 36. S H 1156  
 38. S Q 501  
 40. (C) S-9  
 54. S H 571  
 (1 : 2)



54



28



29



30



35



32



31



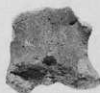
33



36



34



38

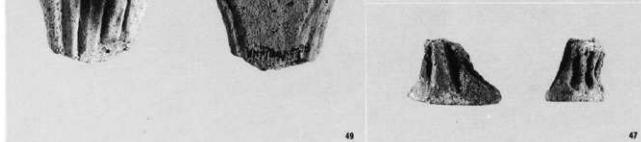
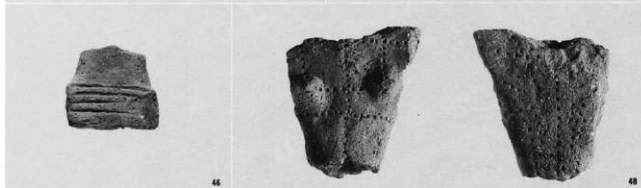
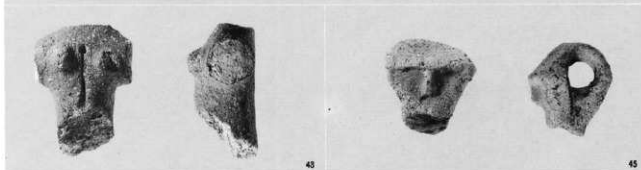
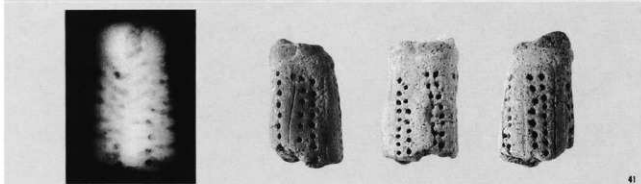
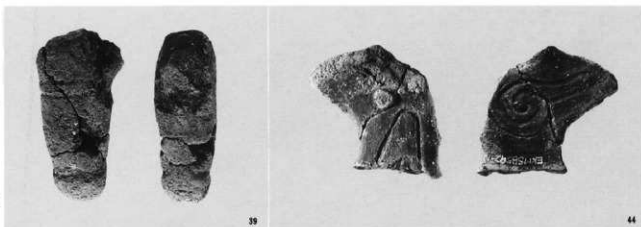


40



土偶 5

- 39. (B) S-3
- 41. (C) S-19
- 43. (B) X区
- 44. (E) G-23
- 45. (E) L区
- 46. (E) L-3
- 47. (E) L-3
- 48. (E) L-8
- 49. (E) L-8
- 50. (E) L-8  
(1:2)



39

44

41

43

45

46

48

50

49

47

## 土偶 6

51. (E) L-8  
 52. (E) L-8  
 53. (E) L-11  
 55. (E) M-18  
 56. (E) M-21  
 57. (E) M-21  
 58. (E) M-23  
 B. (E) M-23  
 C. (E) M-22  
 (1:2)



52



51



56



B



53



55



C



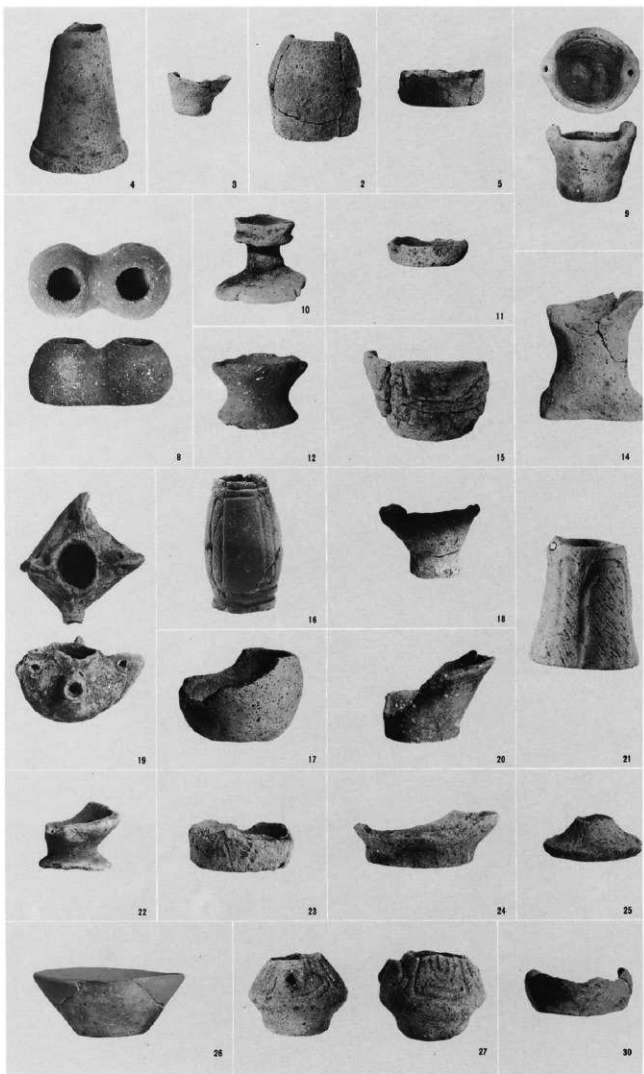
57



58

## 小形土器 1

2. S B101  
 3. S B101  
 4. S B101  
 5. S B108  
 8. S B555  
 9. S B555  
 10. S B555  
 11. S B559  
 12. S B560  
 14. S B566  
 15. S B566  
 16. S B570  
 17. S B594  
 18. S B599  
 19. S H690  
 20. S H857  
 21. S B568  
 22. S H1006  
 23. S H1191  
 24. S H1234  
 25. S K2197  
 26. S Q 2  
 27. (C) S-10  
 30. (E) L-23  
 (1 : 2)



## 小形土器 2

28. (E) L-8  
 31. (E) L-23  
 32. (E) L-25  
 34. (E) M-16  
 37. (E) M-18  
 (1:2)

34

32

37

28

31

## 土製匙

1. SB571  
 2. SH1185  
 3. SB561  
 4. (E) L-8  
 (1:2)

1

2

3

4

## 土製蓋

1. SH864  
 3. (E) L-13  
 4. (E) L-13  
 6. SH1021  
 7. SH1008  
 10. (E) L-13  
 (1:2)

1

3

10

6

7

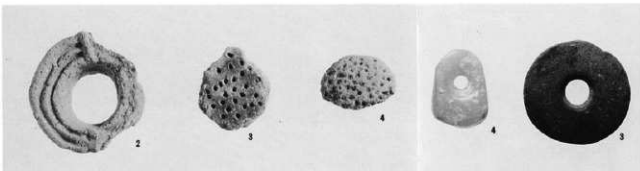
4

左：耳飾り

- 2. (E)L-12
- 3. (C)T-6
- 4. (E)M-19

右：石製玉

- 3. SH1023
- 4. SH824
- (1:2)



ヒスイ原石

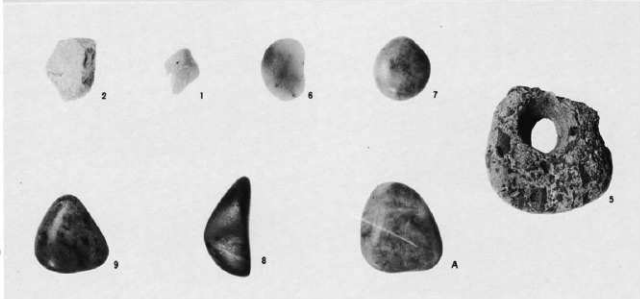
- 1. (E)M-24
- 2. 遺構外Z

研磨礎

- 6. SB570
- 7. SB555
- 8. SH683
- A. SH1012
- 9. SH578

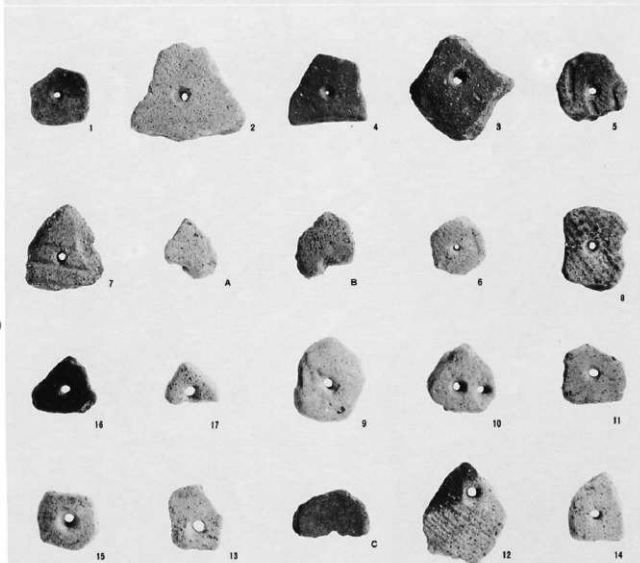
有孔磯

- 5. (B)S-12
- (1:2)



有孔土器片

- 1. SB555
- 2. SB555
- 3. SB555
- 4. SB555
- 5. SB555
- 6. SH924
- 7. SB555
- 8. SH1072
- 9. (E)L区
- 10. (E)L区
- 11. (E)L区
- 12. (E)L-14
- 13. (E)L区
- 14. (E)L-19
- 15. (E)L-25
- 16. (C)S区
- 17. (C)S-20
- A. SB559
- B. SB559
- C. SB555
- (1:2)





SB3-10



SB4-1



SB5-2



SB5-9



SB6-1



SB6-6



SB6-4



SB6-9



SB13-1



SB501-3



SB501-1



SB6-13



SB9-11



SB9-10



SB501-4



SB502-1



SB502-6



SB502-2



SB501-13



SB502-10



SB504-4



SB504-3



SB502-11



ST14-1



SK1-2



SK2-1



SD13-2



SD13-10



SK38-5



SD9-2



SD13-1



SD11-17



SD13-4



SD13-3



SD9-4



勤長野県埋蔵文化財センター発掘調査報告書 14

中央自動車道長野線埋蔵文化財発掘調査報告書 11

—明科町内—

北村遺跡

図版編

発行 平成5年(1993)3月31日発行  
発行者 日本道路公団名古屋建設局  
長野県教育委員会  
勤長野県埋蔵文化財センター

〒388 長野市篠ノ井布施高田963-4 電話 0262-93-5526

印刷 信毎書籍印刷株式会社