

版 圖



船橋遺跡全景 (河内橋より上流)



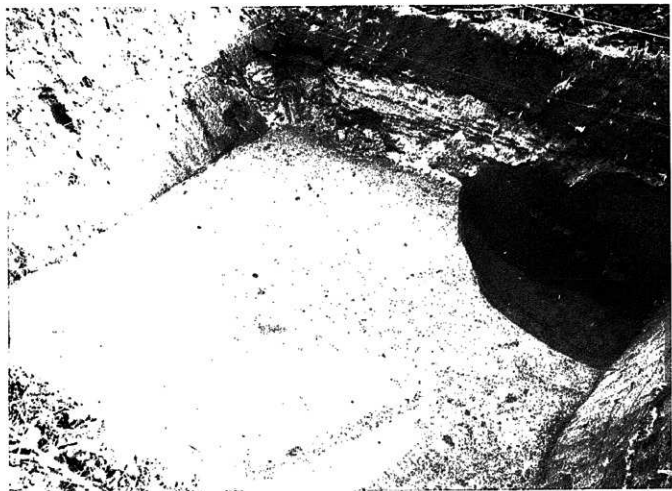
船橋遺跡全景 (河内橋より下流)



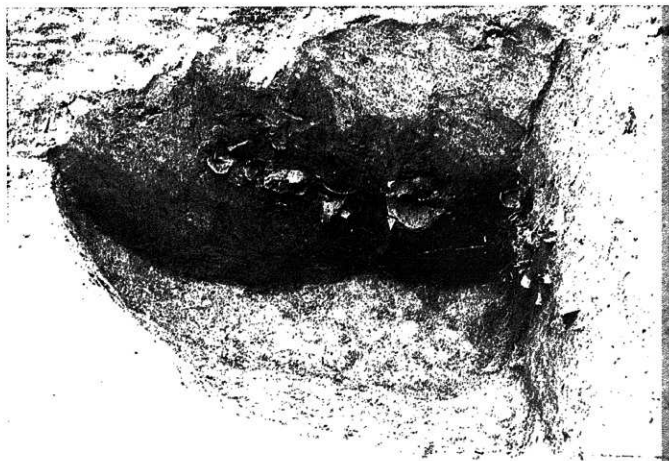
第七トレンチ全景



第七トレンチ土器出土状態



第9トレンチ全景



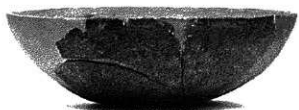
第9トレンチ土拡最終面



第9トレンチ土器遺物出土状態（上から）



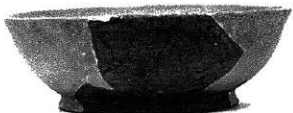
第9トレンチ土器遺物出土状態（北から）



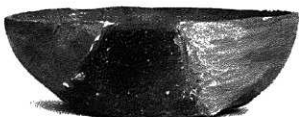
57



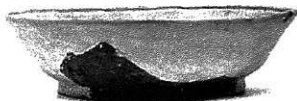
18



52



16



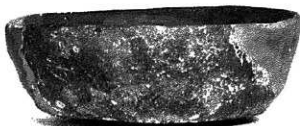
148



15



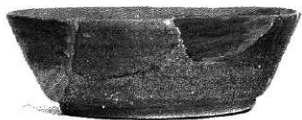
146



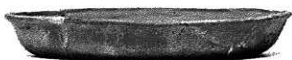
14



56



14



21



12



6



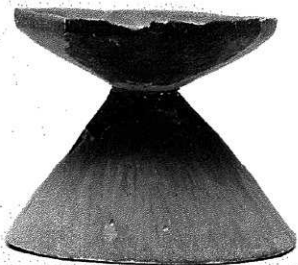
4



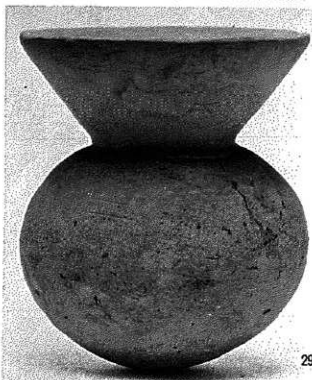
3



42



40



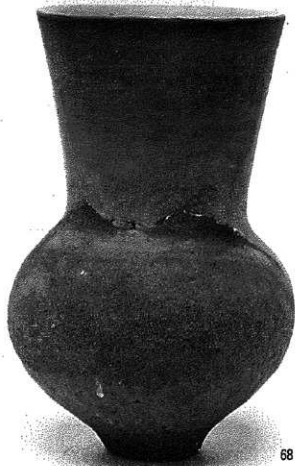
29



48



36



68





99



96



98



94



112



201



95



108



104



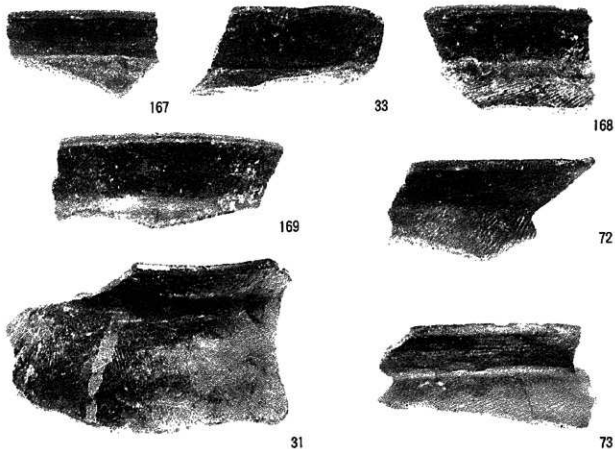
101



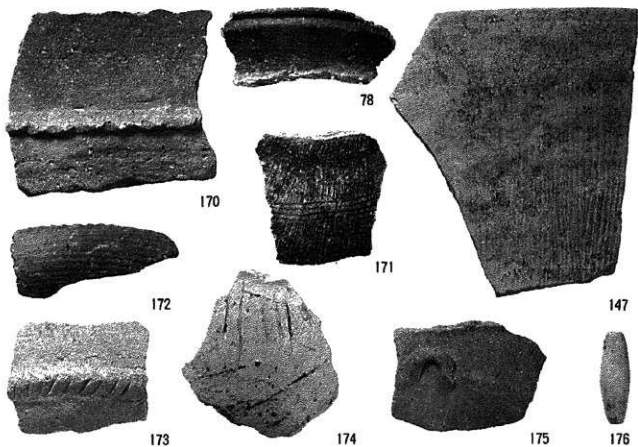
106



118



庄内式土器口縁



表採遺物、縄文式土器(170) 弥生式土器(172, 174, 175) 手埴り(173) 甗(147) 土鐘(176)



177



178



179



180



181



182



183

石器類



184



185



186



187

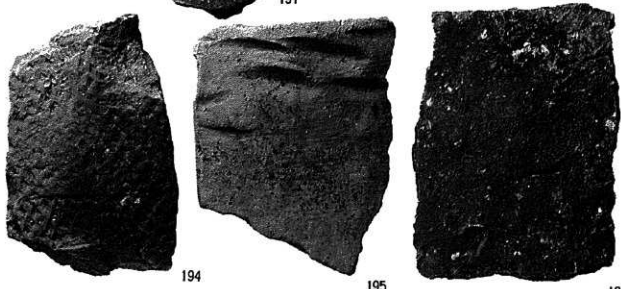
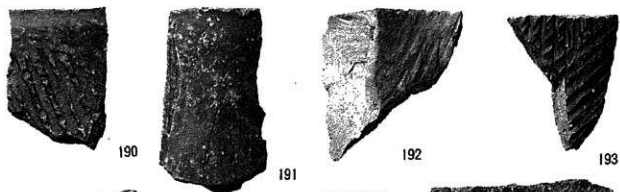


188

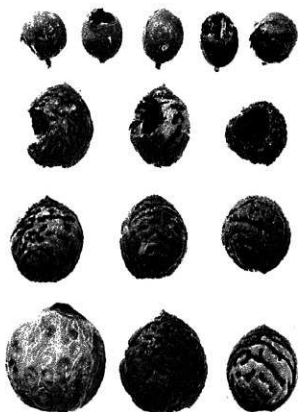
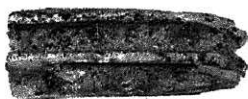


189

石器類



瓦類



馬の歯(左) 種子類(右)

T. P 15.6M

T. P 15.8M



河内橋

■ NO13tr (T. P 15.0M)

■ NO11tr (T. P 14.5M)

■ NO9tr (T. P 15.1M)

■ NO7tr (T. P 15.0M)

■ NO5tr (T. P 14.3M)

■ NO3tr (T. P 14.7M)

■ NO15tr (T. P 16.5M)

■ NO1tr (T. P 15.0M)

■ NO14tr (T. P 14.2M)

■ NO12tr (T. P 14.0M)

■ NO10tr (T. P 13.8M)

■ NO8tr (T. P 14.8M)

■ NO6tr (T. P 15.2M)

■ NO4tr (T. P 16.4M)

■ NO2tr (T. P 14.8M)

高水敷

川

L

K

J

大和川

I

H

G

F

E

D

C

B

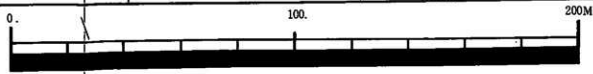
A

M

S

堰

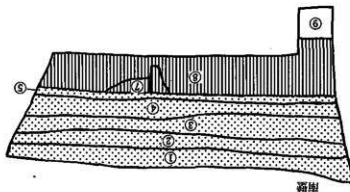
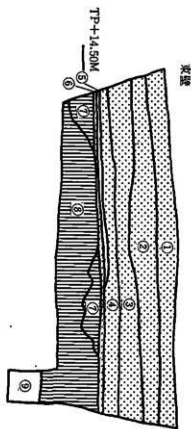
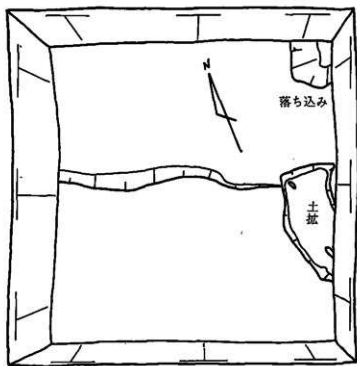
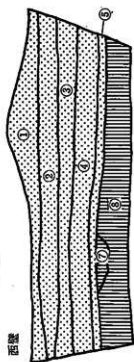
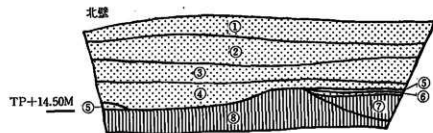
堤



● T. P 16.3M

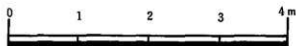
● T. P 17.4M

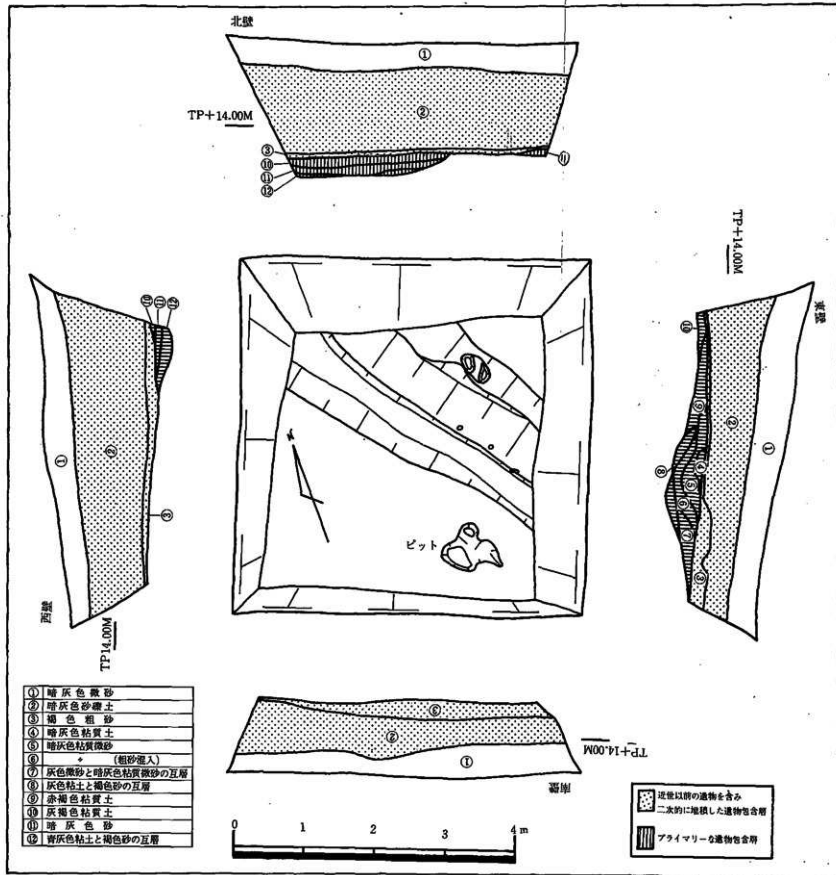
各トレンチ横、堤防外に記入した数値は表土面T.Pである



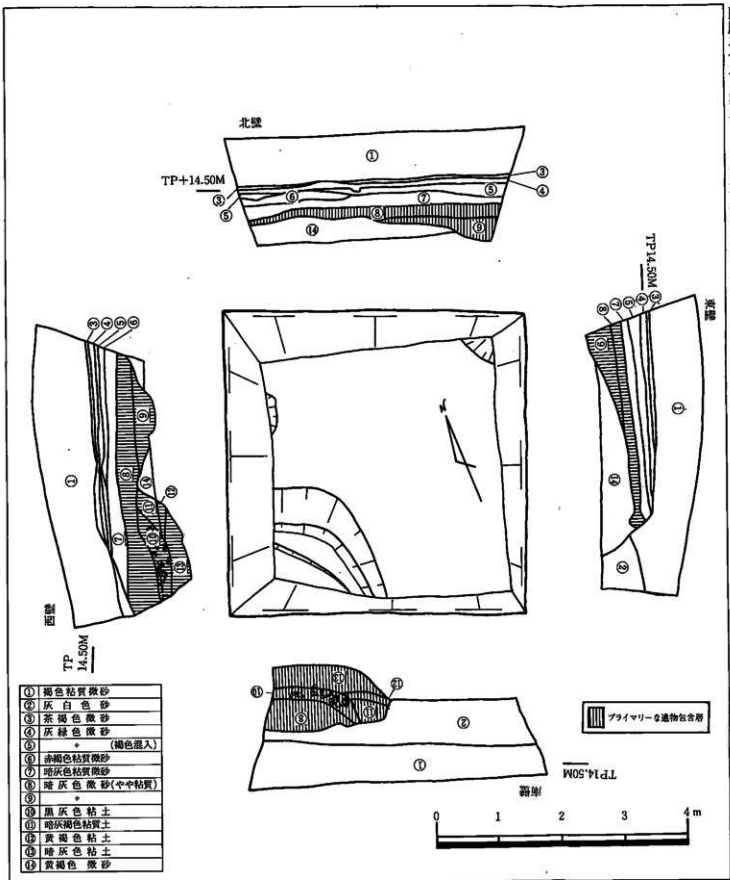
- ① 褐色砂
- ② 褐色砂
- ③ 褐色砂
- ④ 褐色砂
- ⑤ 褐色砂
- ⑥ 暗灰色粘土
- ⑦ 黒灰色粘土
- ⑧ 茶褐色粘土

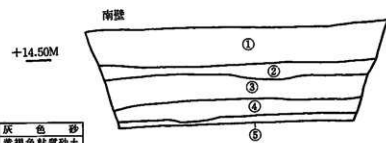
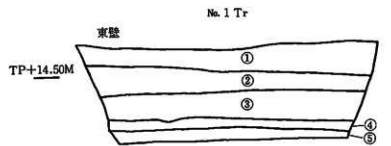
近世以前の遺物を含み  
二次的に堆積した遺物を含む層  
プライマリーな遺物を含む層



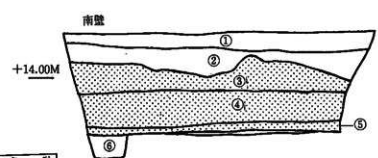
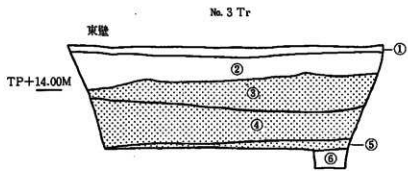




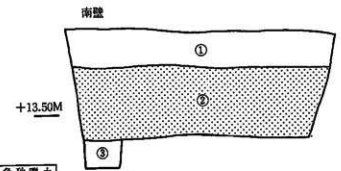
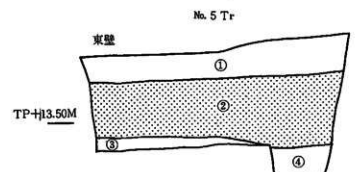




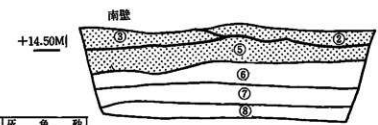
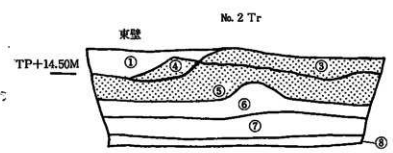
- ① 灰 色 砂
- ② 黄褐色粘質砂土
- ③ 灰褐色粘質微砂
- ④ 灰褐色粘質砂土
- ⑤ 赤茶褐色粘質砂土



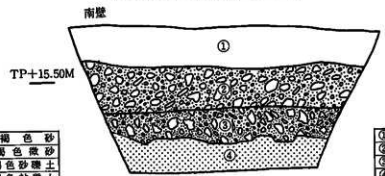
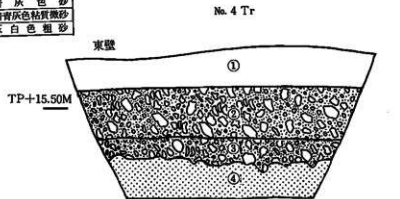
- ① 灰 色 砂
- ② 暗褐色砂礫土
- ③ 暗灰色砂礫土
- ④ 暗 灰 色 砂
- ⑤ 暗 灰 色 砂
- ⑥ 暗青灰色粘質微砂
- ⑦ 灰 白 色 粗 砂



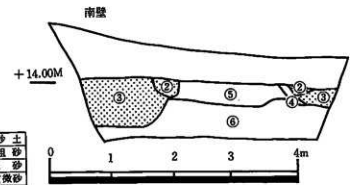
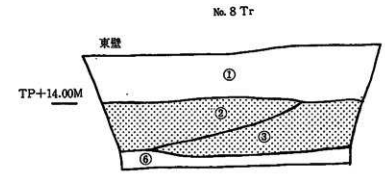
- ① 暗褐色砂礫土
- ② 暗 灰 色 砂
- ③ 灰 白 色 粗 砂



- ① 灰 色 砂
- ② 黒色粘質土
- ③ 暗灰色粘質砂土
- ④ 赤褐色粘質砂土
- ⑤ 黄褐色粘質砂土
- ⑥ 灰褐色粘質砂土
- ⑦ 赤茶褐色粘質砂土
- ⑧ 淡黄褐色粘質砂土

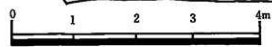


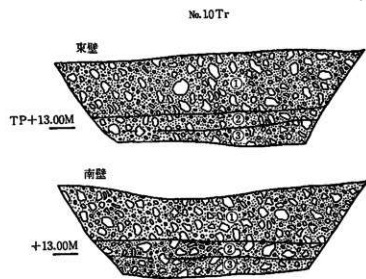
- ① 黄褐色砂
- ② 黄褐色微砂
- ③ 灰褐色砂礫土
- ④ 茶褐色粘質土



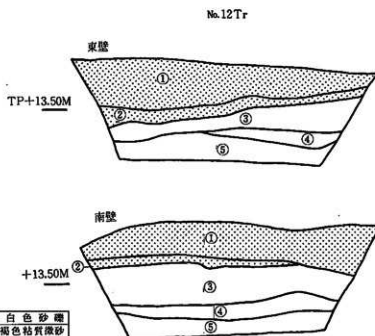
- ① 暗灰色砂土
- ② 黄褐色粗砂
- ③ 灰 白 色 粗 砂
- ④ 赤褐色粘質微砂
- ⑤ 灰褐色粘質微砂
- ⑥ 青灰色粘質微砂

- 現代の瓦片を含む遺物  
包含層
- 近世以降の遺物を含み  
二次的に堆積した遺物  
包含層

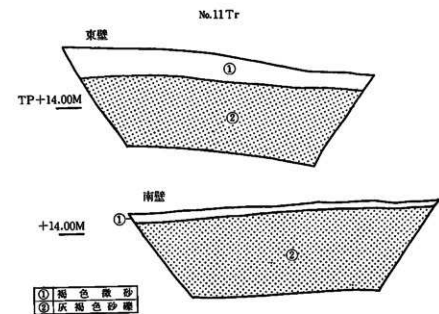




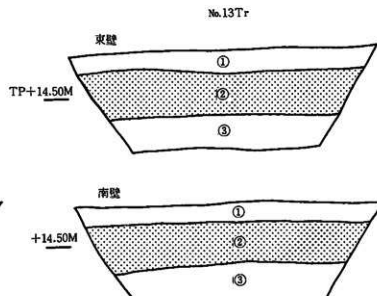
- ① 灰褐色粗砂
- ② 灰褐色粗砂
- ③ 灰褐色粗砂



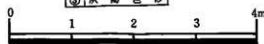
- ① 灰白色砂礫
- ② 茶褐色粘質腐砂
- ③ 暗茶色粘質腐砂
- ④ 黄褐色粘質腐砂
- ⑤ 青灰色粘質腐砂



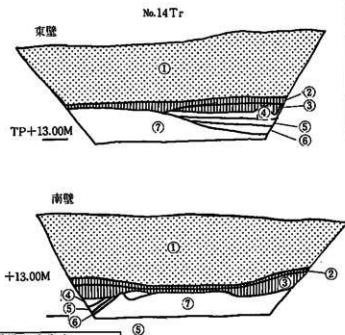
- ① 褐色塵砂
- ② 灰褐色砂礫



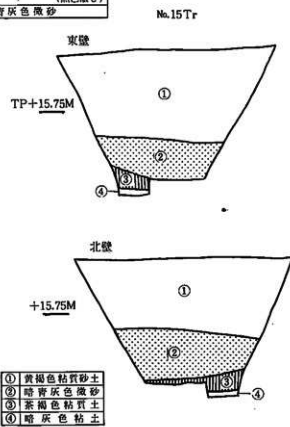
- ① 暗褐色塵砂
- ② 灰褐色砂礫土
- ③ 灰褐色砂



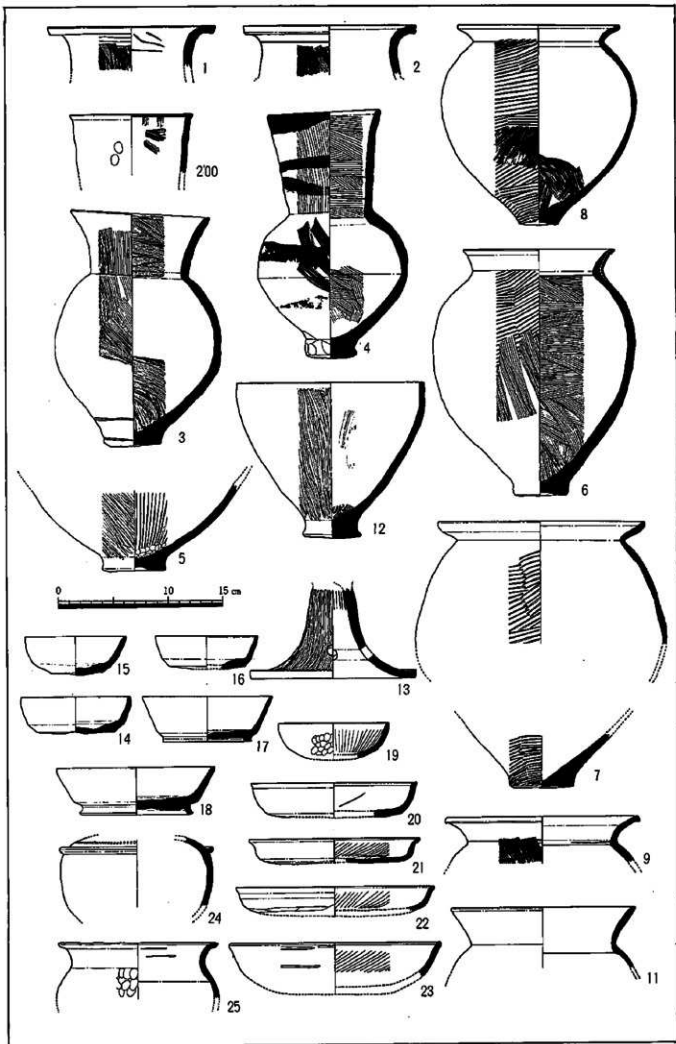
- 現代の製品を含む遺物  
包含層
- 近世以前の遺物を含み  
二次的に埋積した遺物  
包含層
- プライマリー-含遺物包  
含層

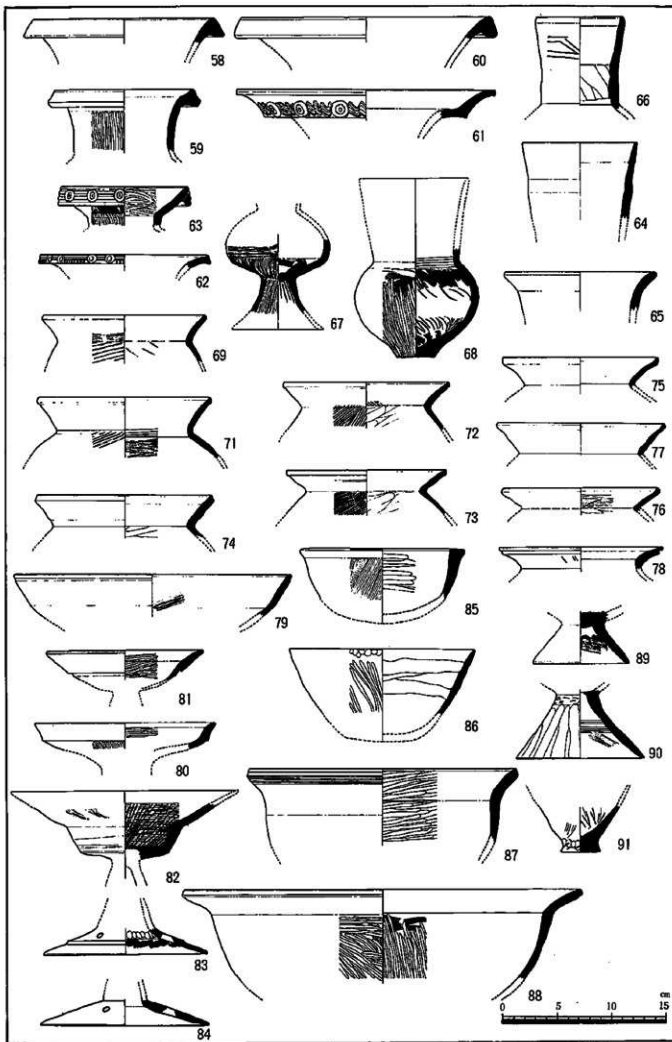


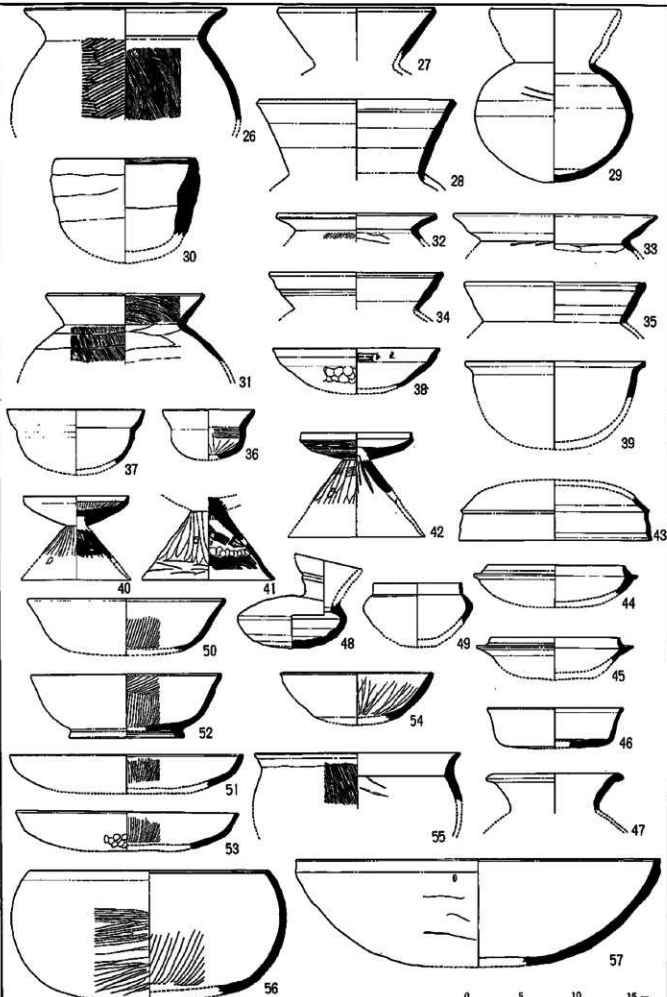
- ① 灰褐色砂礫土
- ② 茶褐色粘質腐砂
- ③ 暗青灰色粘質腐砂  
(砂分少し)
- ④ \*
- ⑤ \*
- ⑥ \*
- ⑦ 暗青灰色腐砂



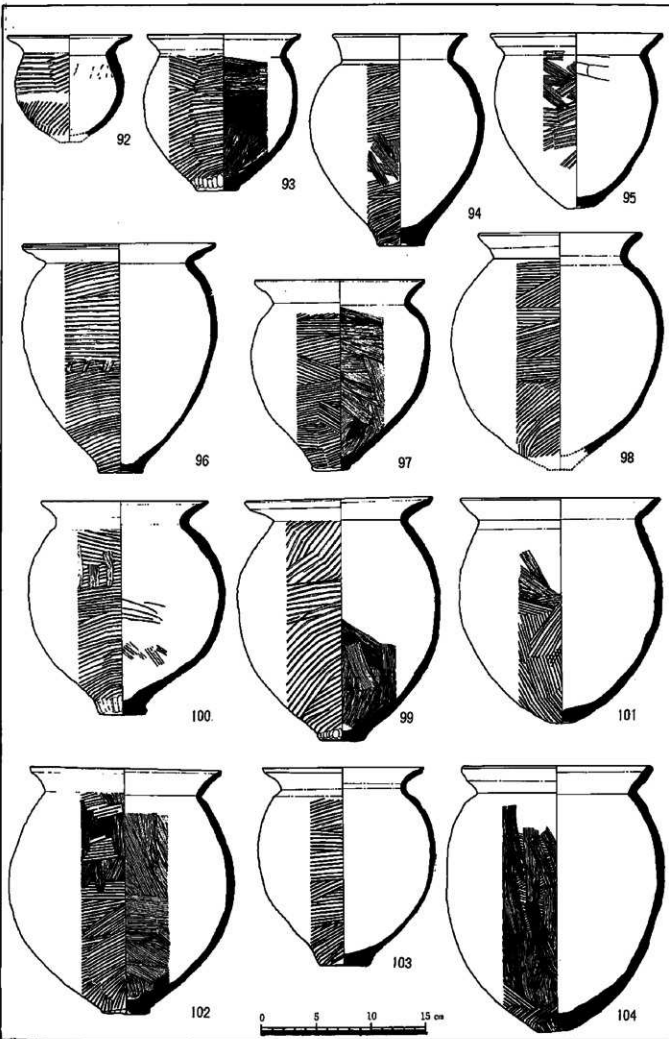
- ① 黄褐色粘質砂土
- ② 暗青灰色腐砂
- ③ 茶褐色粘質土
- ④ 暗灰色粘土

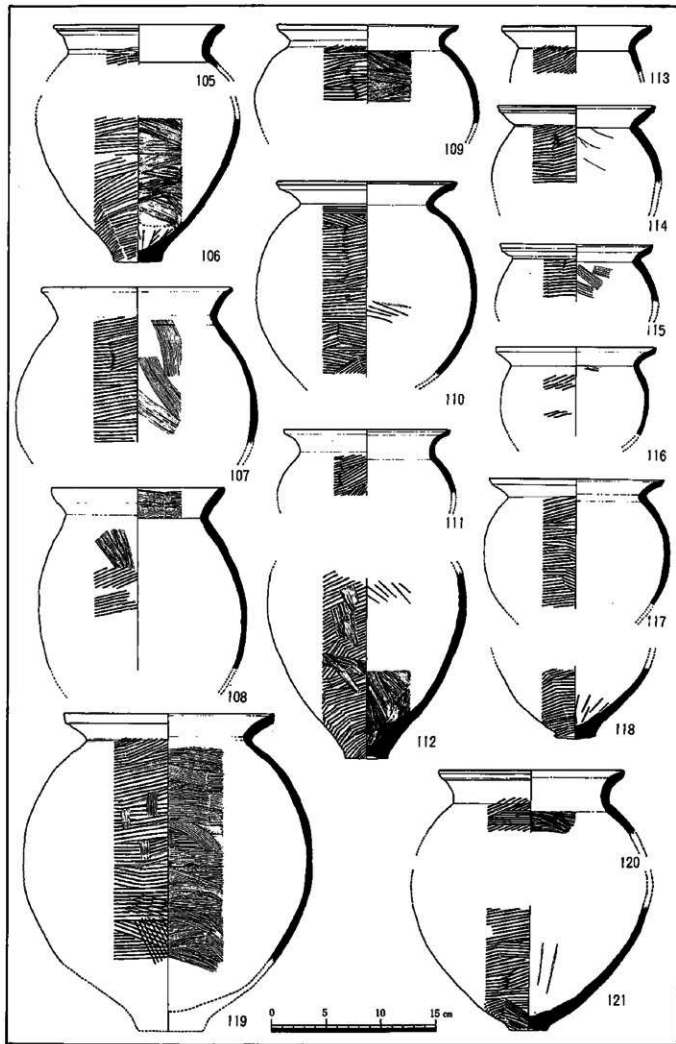




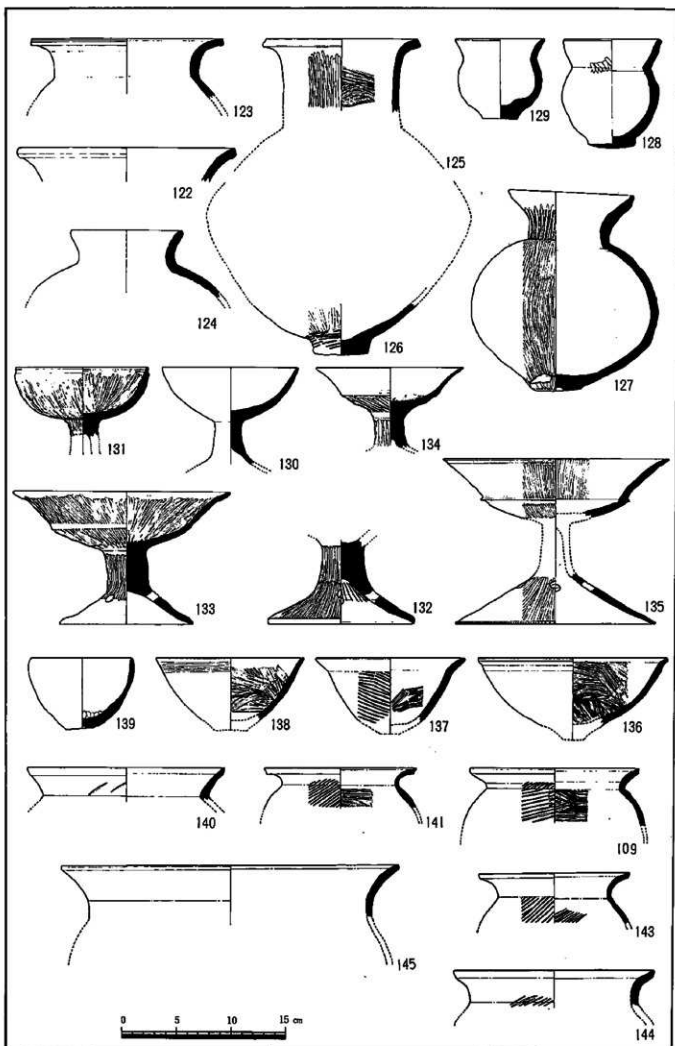


第2トレンチ(43、第4トレンチ(50、第7トレンチ (27~29、31~42、44~46)、第15トレンチ (47、48、50~53、57) 第8トレンチ (26、30)、第10トレンチ (54、55)、









0 5 10 15 cm