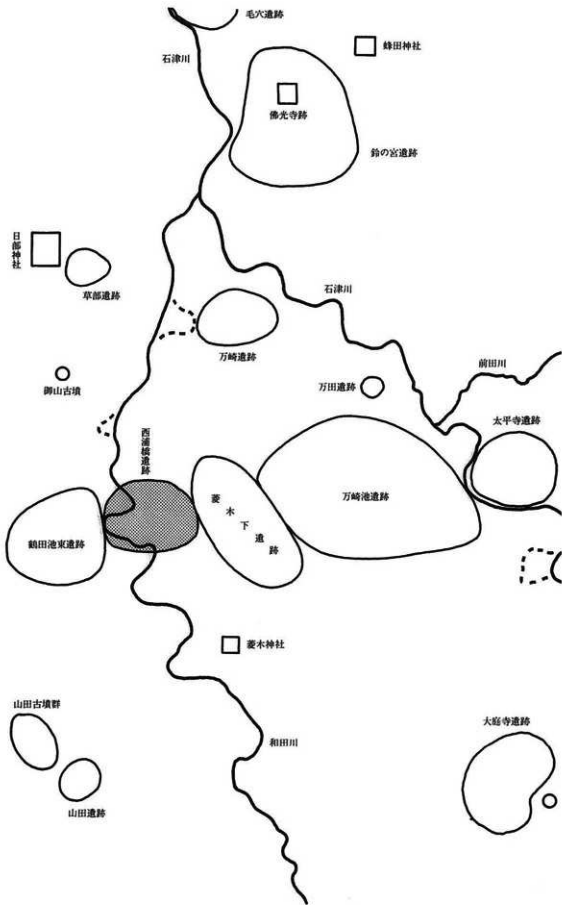


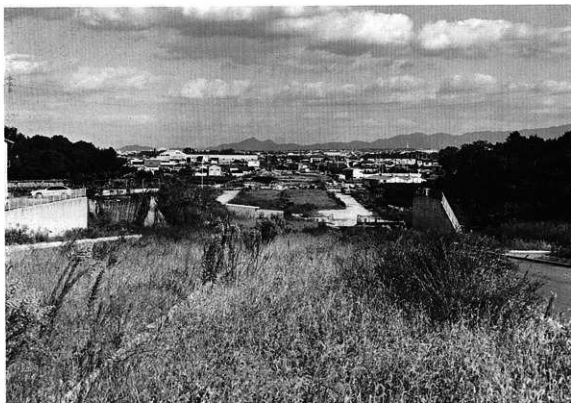
圖 版







東（菱木下遺跡上空）から



西（鶴田池東遺跡）から



西から



東から



Scライン断面 (南西から)



Scライン断面 (南東から)



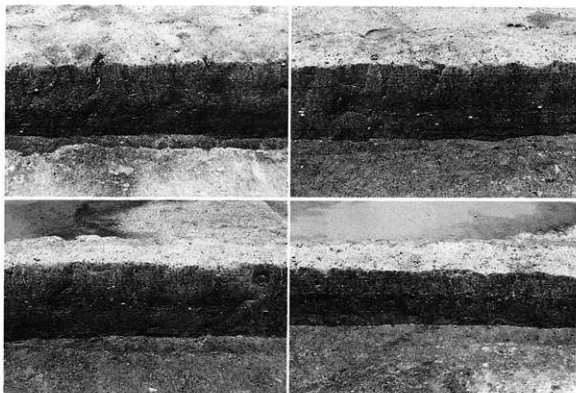
1 ~ 3 1・4・13・20・21層
4 ~ 7 8~12・18・20・21層
8 2・5・6・14・15・19~21層

東西方向断面(南から)

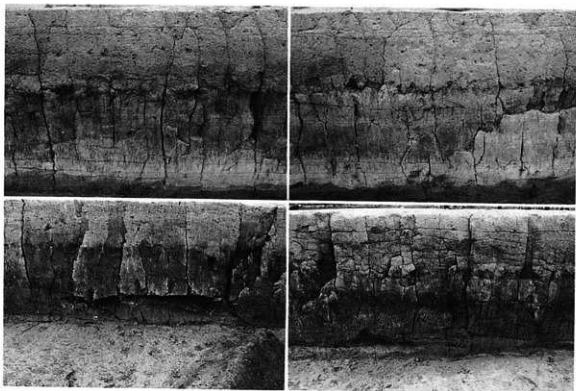


- 9~12 17~21層
- 13・14 3・17~21層
- 15 3・7・16~21層
- 16 7・16~24層

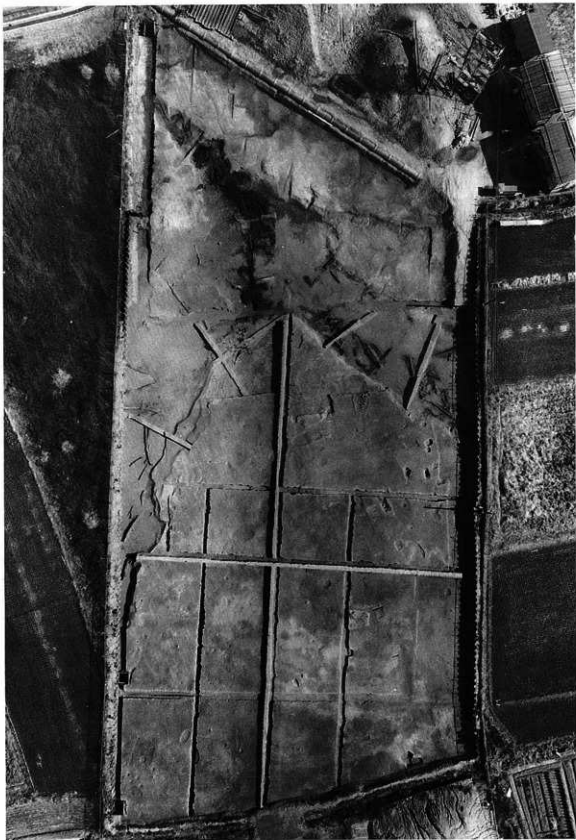
東西方向断面(南から)



中・近世水田層



縄文晩期(黄色粘土層)から中・近世水田層



縄文時代土壙墓群・弥生時代河川・杭列群



SK 01



SK 02



SK 03



SK 04



SK05



SK06



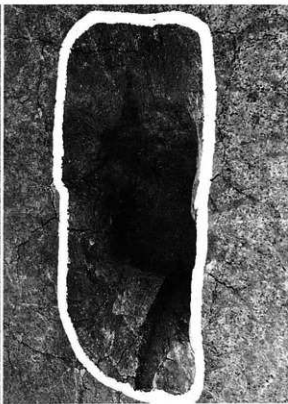
SK07



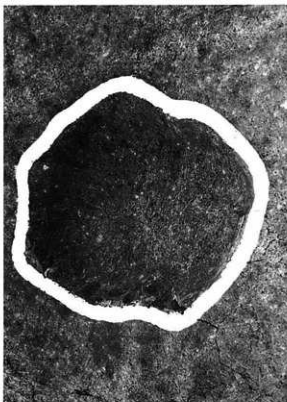
SK08



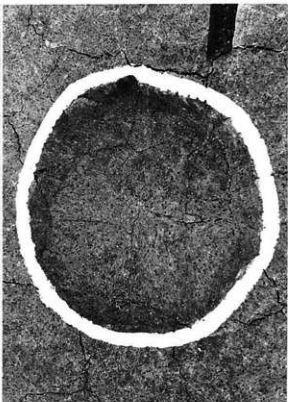
SK09 (上)・10(下)



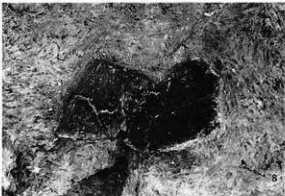
SK 11



SK 12



SK 14



1 T66-b-1 青灰色砂礫上層 (107)

3 R68-d-1 縄文河川肩部黄灰色シルト層 (85)

5 B区 河川のベース 青灰色シルト層

7 C区 黄色粘土下層 (86)

2 S66-b-2 自然河川内 黄灰色シルト層 (106)

4 T67-c-4 黄色粘土下層 (89)

6 A区 河川のベース 青灰色シルト層

8 D区 黄色粘土下層 (86)



SK 15遺物出土狀態

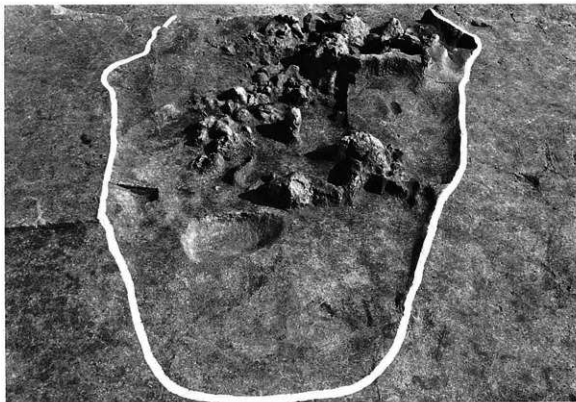


1 D区 弥生河川内

3 S66-c-3 弥生河川内灰色砂礫層

2 C区 弥生河川内

4 R66-b-3 弥生河川内



全景（西から）



部分（南東から）



第四次水田遺構面 東から



第五次水田遺構面 西から

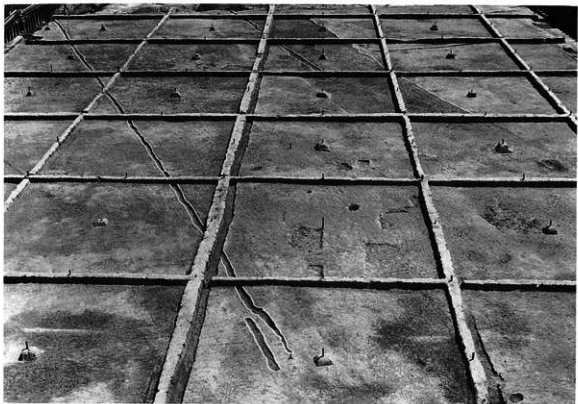
図版一六 第三次水田遺構面



西から



東から

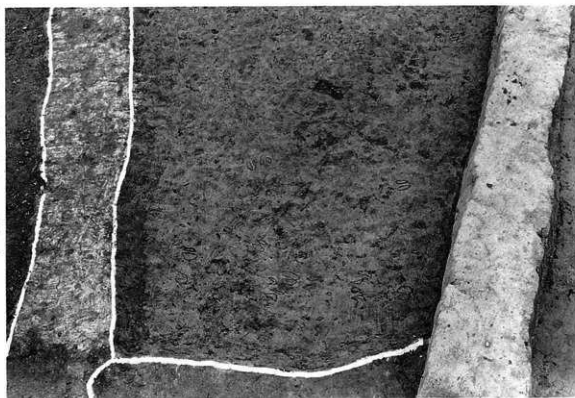


西から



東から

図版一八 牛足跡 (第一次水田遺構面)





西から



東から



50



97



51



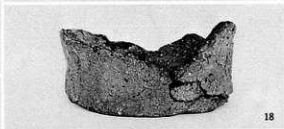
106



86



17



18

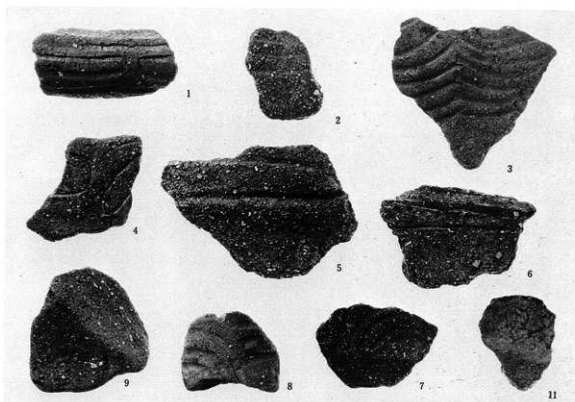


87

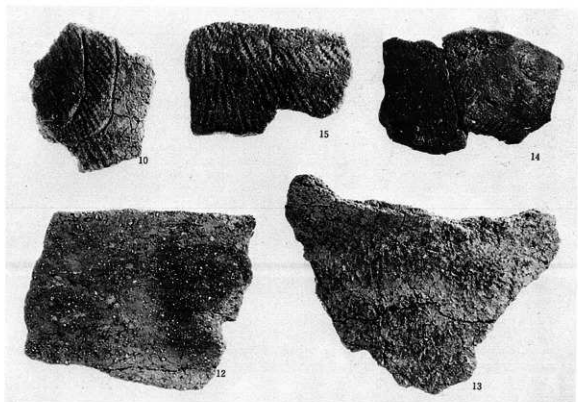


19

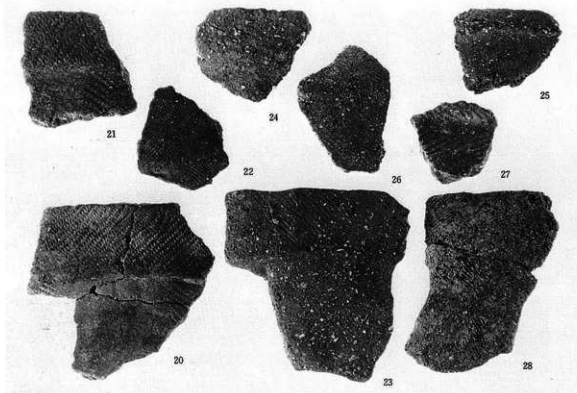
50 後期第V類、 51 後期第VI類、 86 後期第VII類、 87 晩期第VIII類、 97 晩期第V類、 106 晩期第VII類、 17~19 底部(中期)



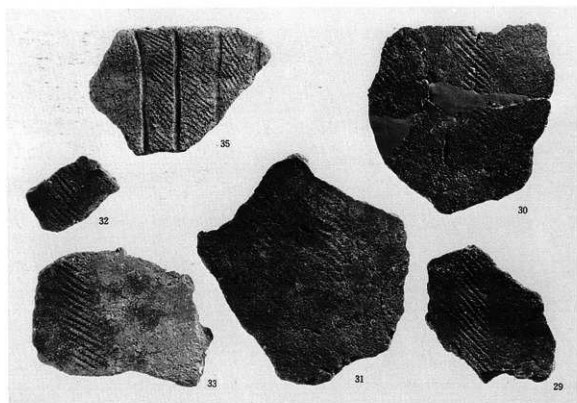
1 中期第Ⅰ類、2・3 中期第Ⅱ類、4～9 中期第Ⅲ類、11 中期第Ⅳ類



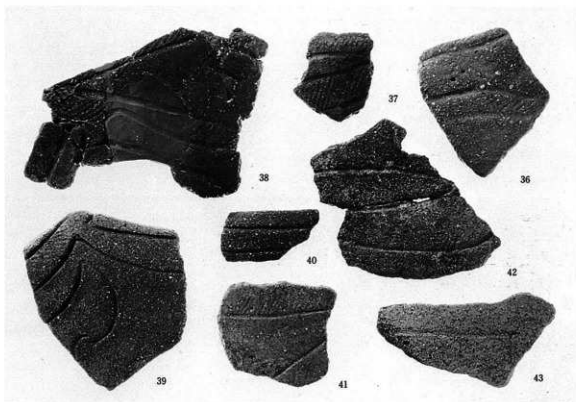
10 中期第Ⅴ類、12 中期第Ⅵ類、13・14 中期第Ⅶ類、15 後期第Ⅷ類



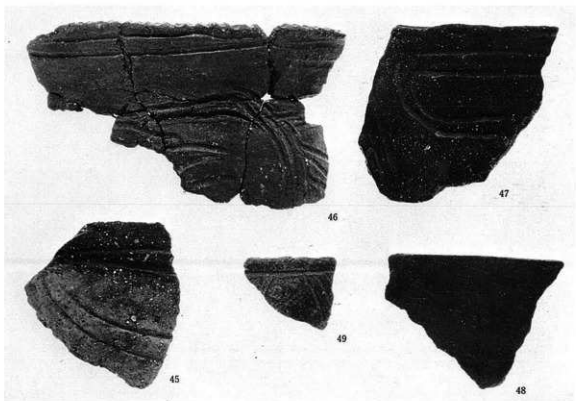
中期第V類



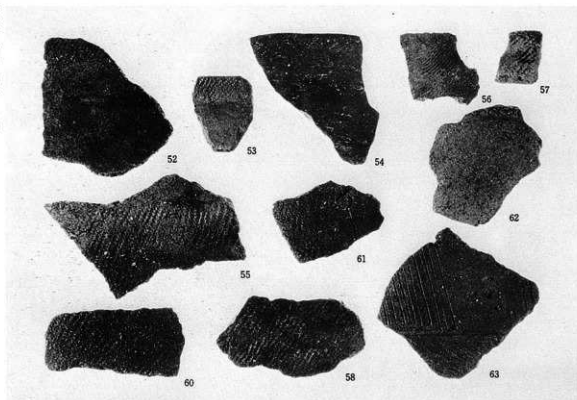
中期第V類



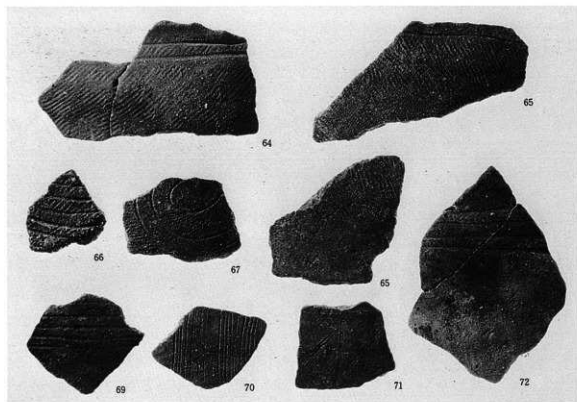
後期第Ⅰ類



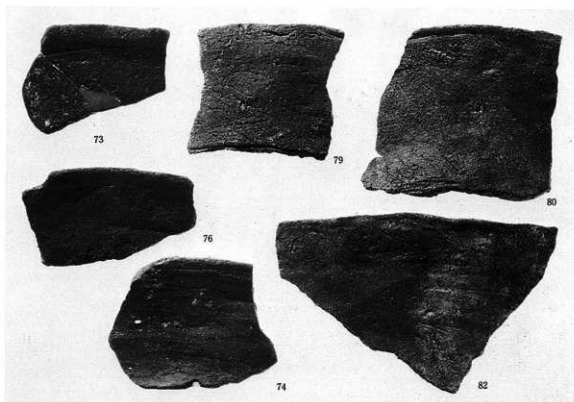
45~47 後期第Ⅱ類、 48 後期第Ⅲ類、 49 後期第Ⅳ類



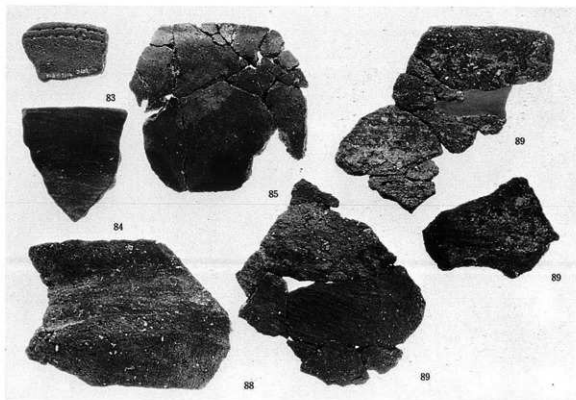
後期第Ⅴ類



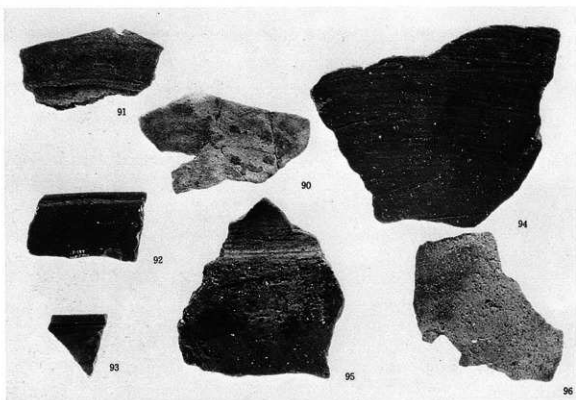
後期第Ⅵ類



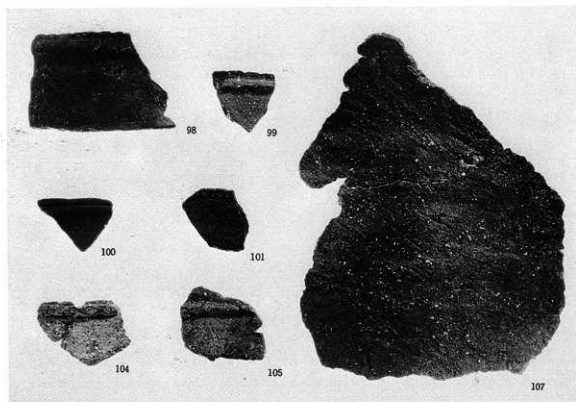
73・76・79・80・82 後期第Ⅰ類、74 後期第Ⅳ類



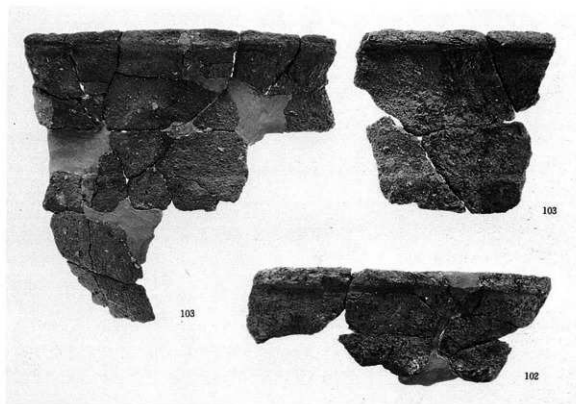
83・84 後期第Ⅳ類、85 晩期第Ⅱ類、88 晩期第Ⅳ類、89 後期第Ⅰ類



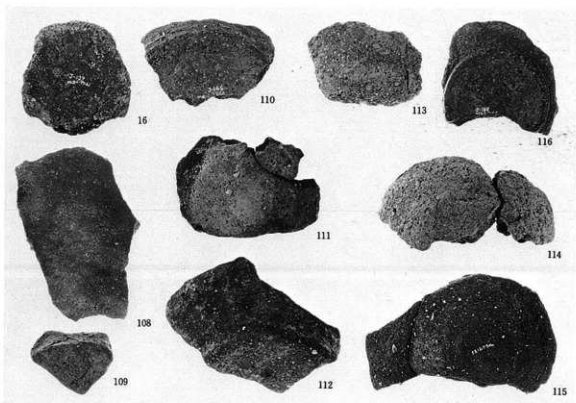
90・91・95 晩期第Ⅲ類、92・93 晩期第Ⅳ類、94 晩期第Ⅰ類、96 晩期第Ⅴ類



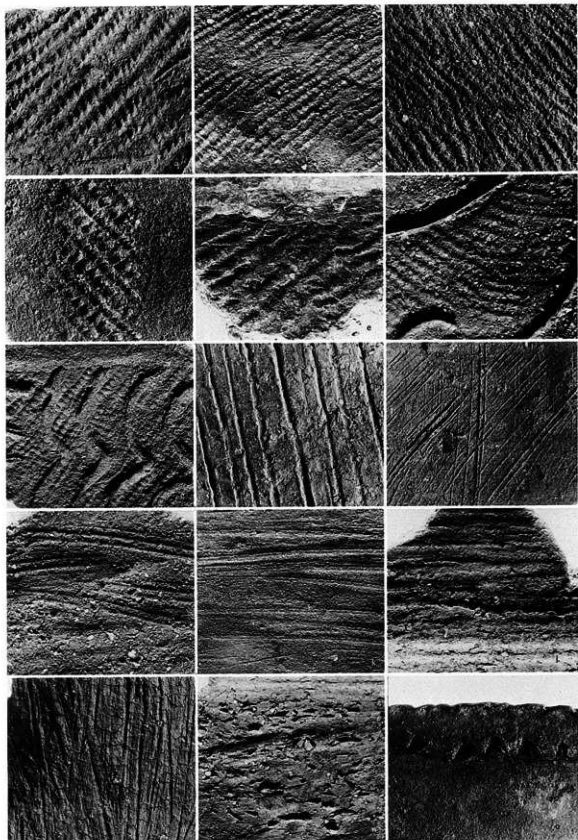
98~100 晩期第Ⅵ類、101・104・105・晩期第Ⅶ類、107 後期第Ⅵ類



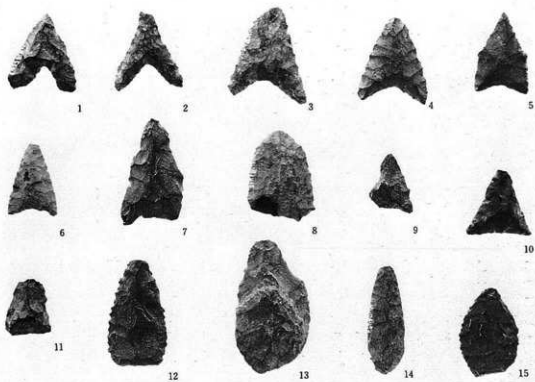
晩期第Ⅵ類



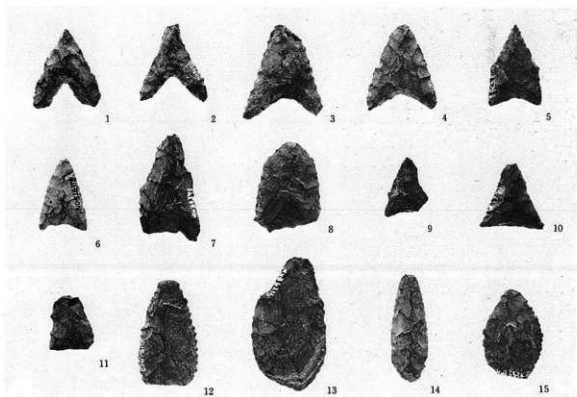
底部



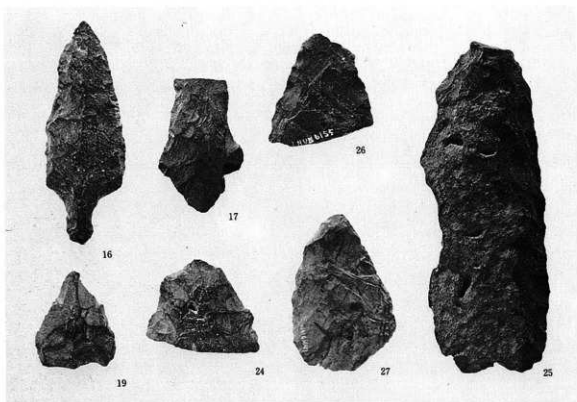
a・b LR、c RL、d 縦位の縄文LR、e 無節の縄文、f・g 沈線+縄文、h 沈線
 i 半截竹管条線、j・k 巻貝条痕、l 二枚貝条痕、m 纖維束のケズリ、n ケズリ、o 刻目突帯



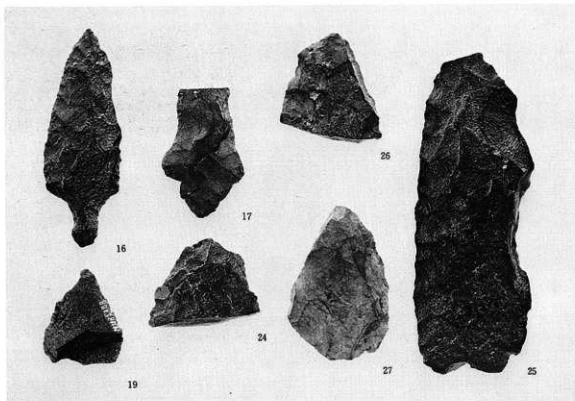
石鏃



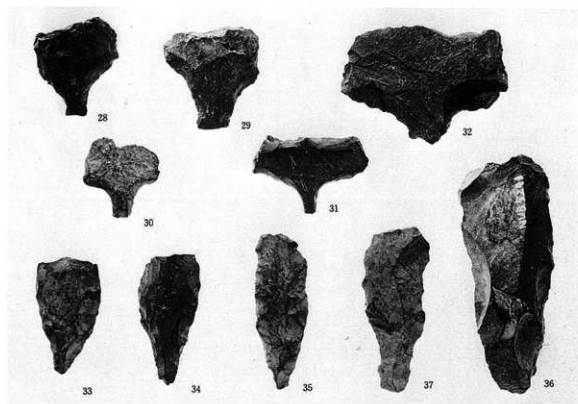
同上 (裏面)



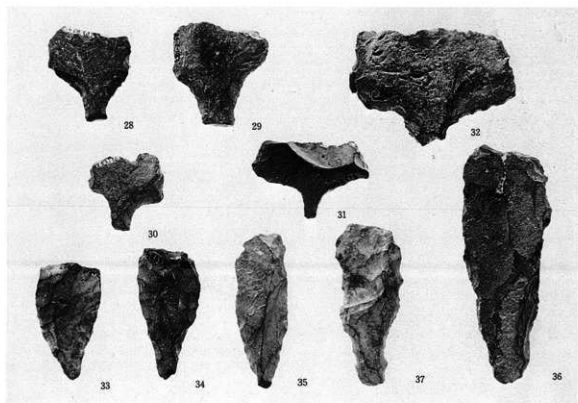
16・17 石鏃、19 石鏃未製品、24・26 石槍、25 石槍未製品、27 尖頭器



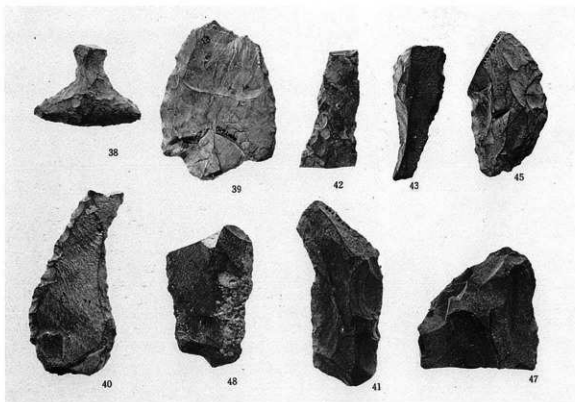
同上(裏面)



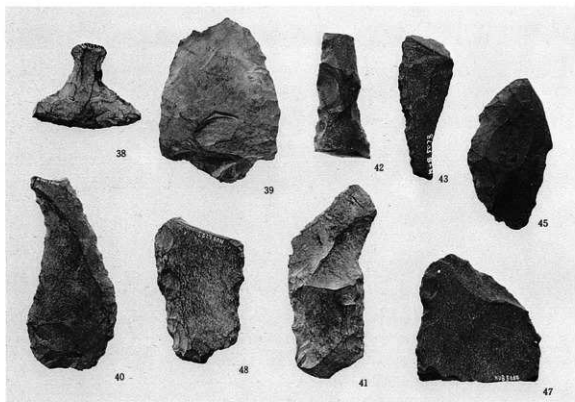
28~35 石錐、36・37 石錐未製品



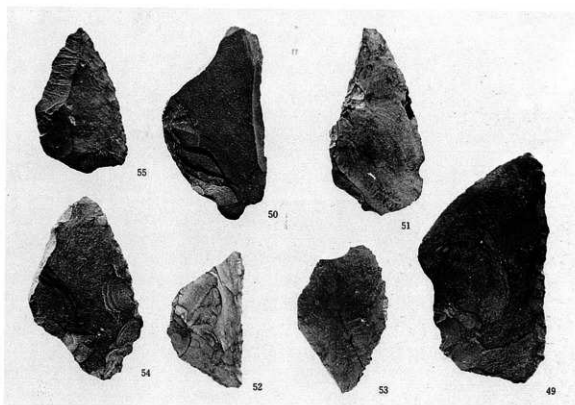
同上(裏面)



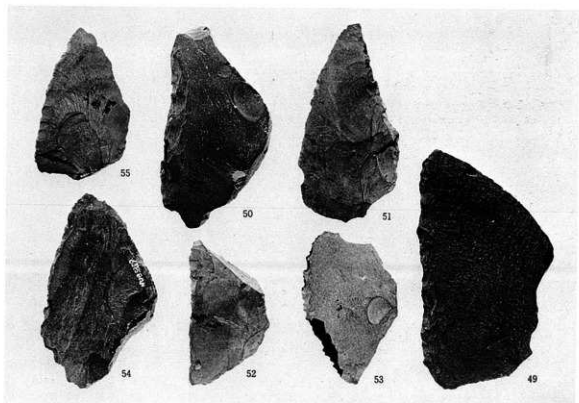
38 石匙、 39~43・45・47・48 不定形スクレイパー



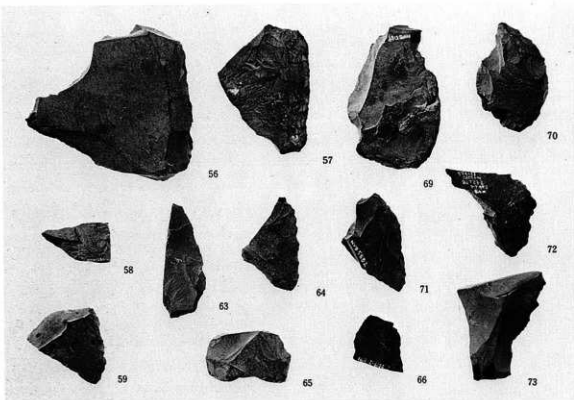
同上(裏面)



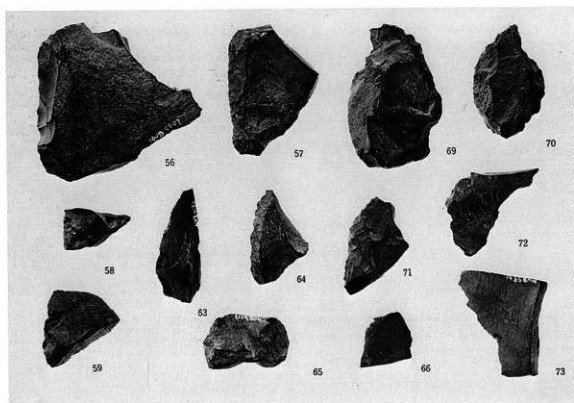
不定形スクレイパー



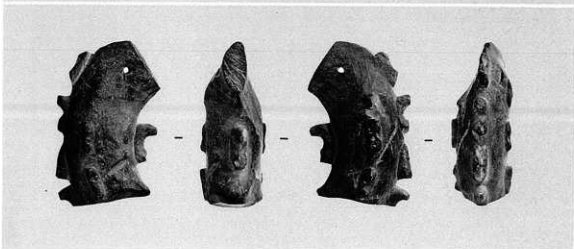
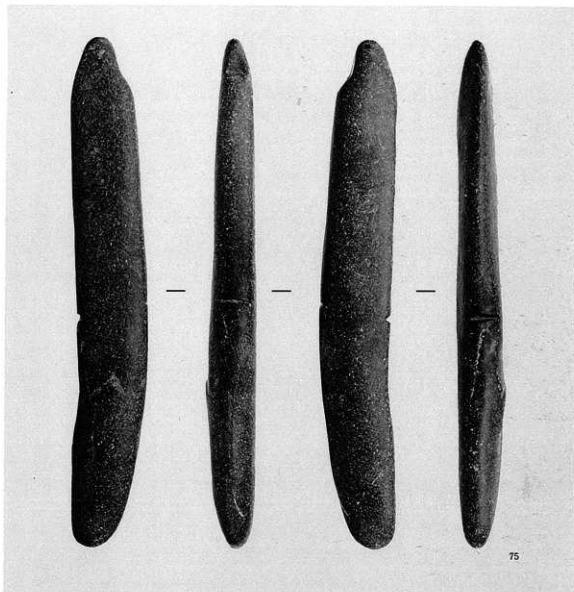
同上(裏面)



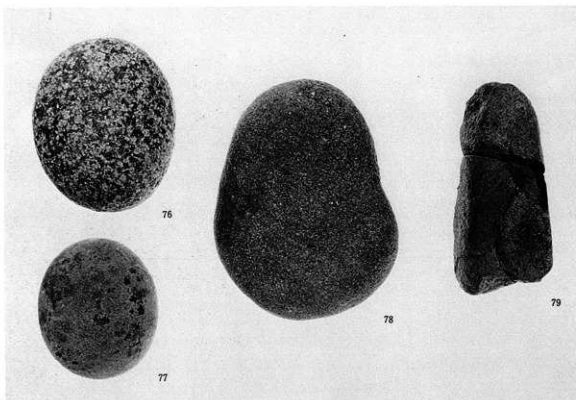
不定形スクレイパー



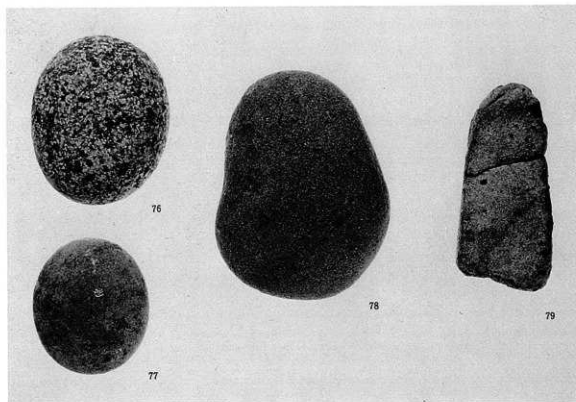
同上(裏面)



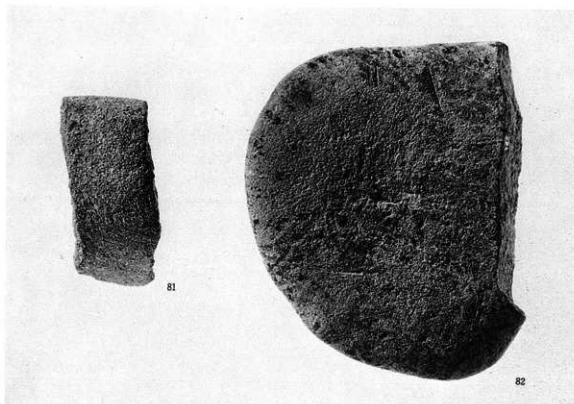
75 石刀、下 子持勾玉



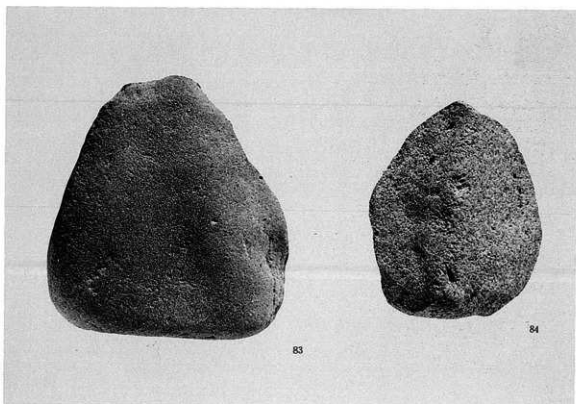
磨石



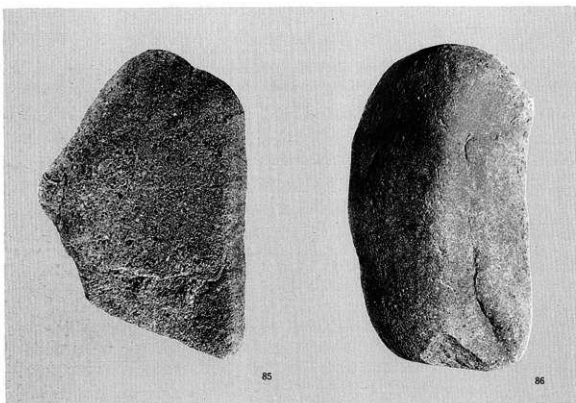
同上(裏面)



台石



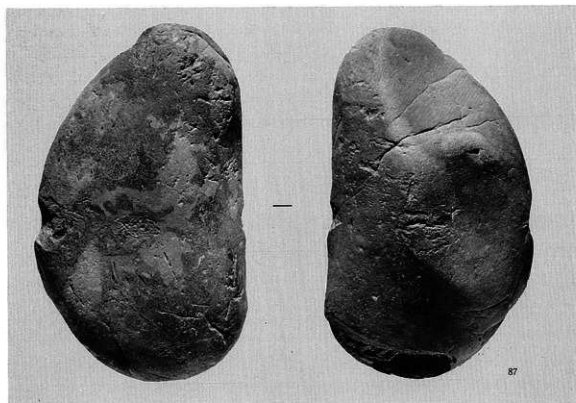
台石



85

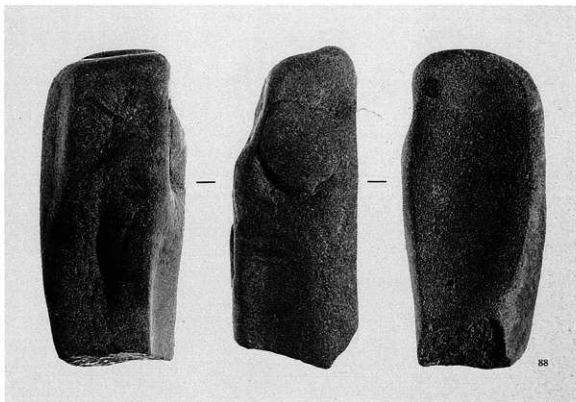
86

台石

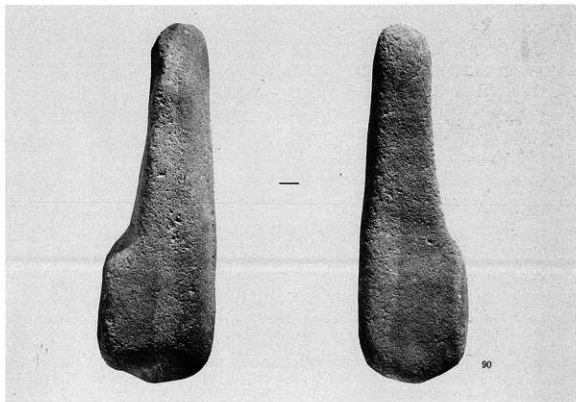


87

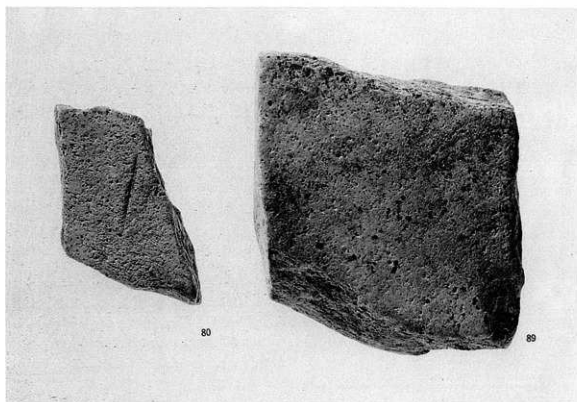
台石



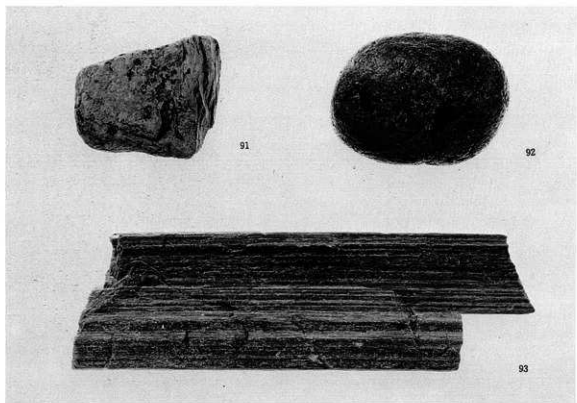
台石



台石



- 80 砥石、 89 台石



搬入石材



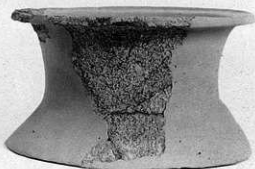
118



132



120



150



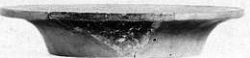
121



159



124



122



127



138



145



140



146



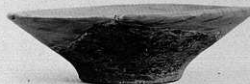
147



139



141



148



142



165



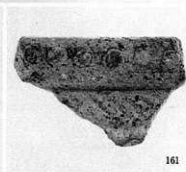
119



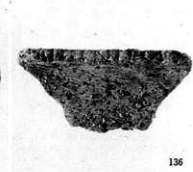
158



163



161



136



133



134



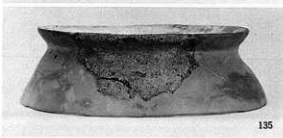
172



173



149



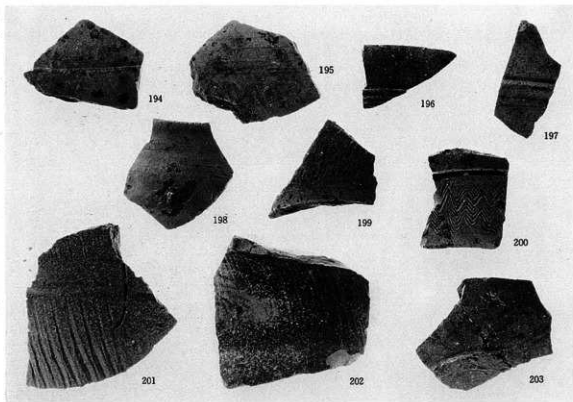
135



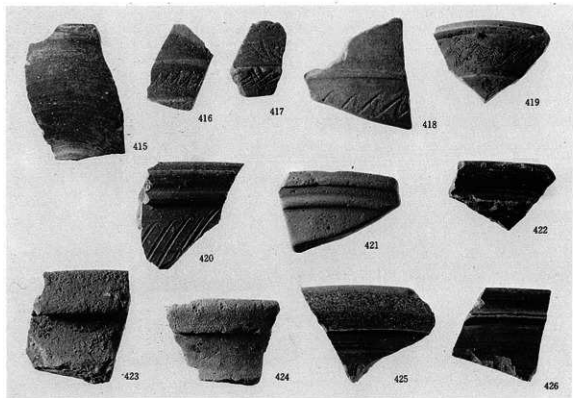
170



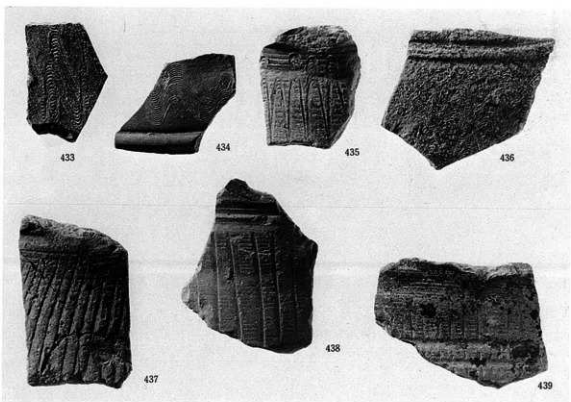
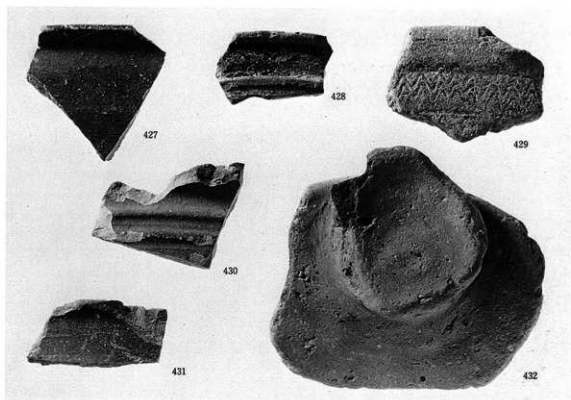
167

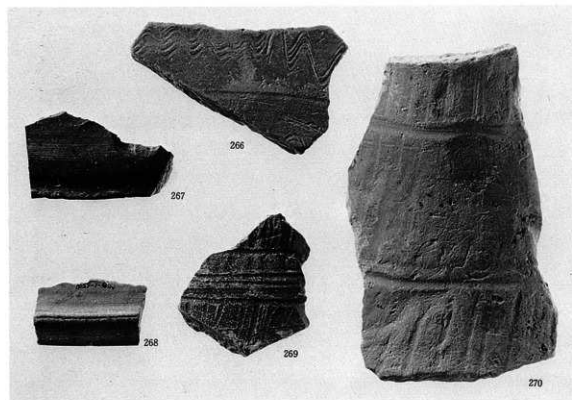
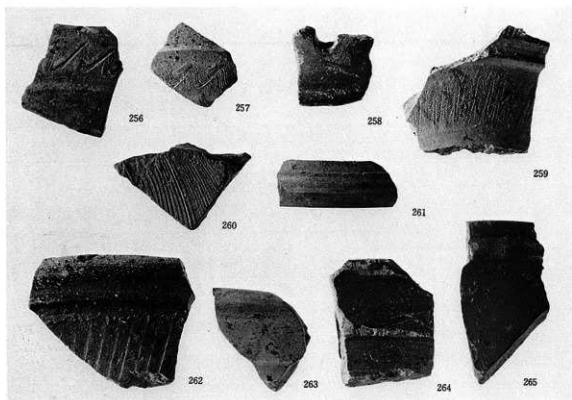


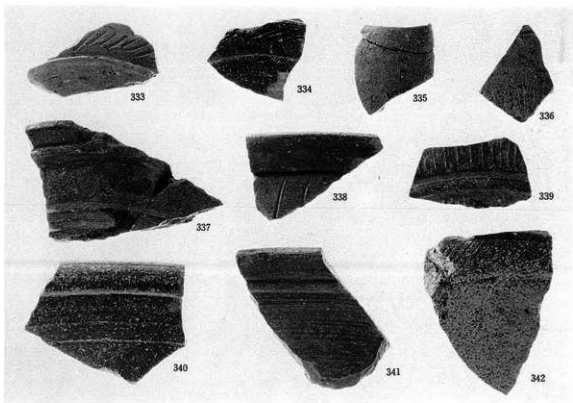
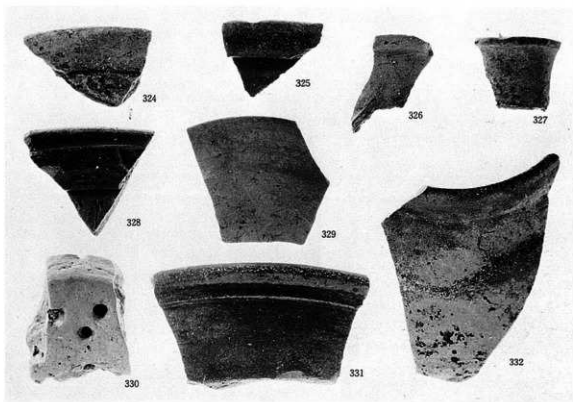
灰色粘土下層

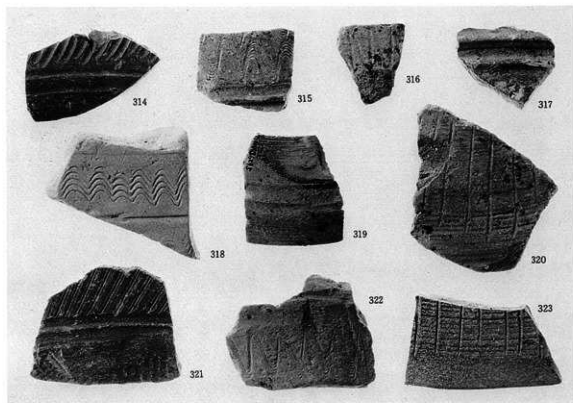
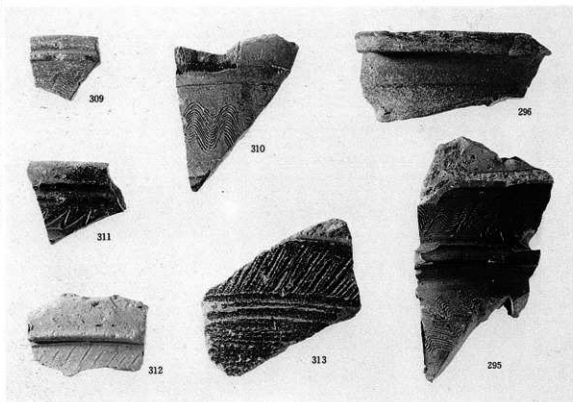


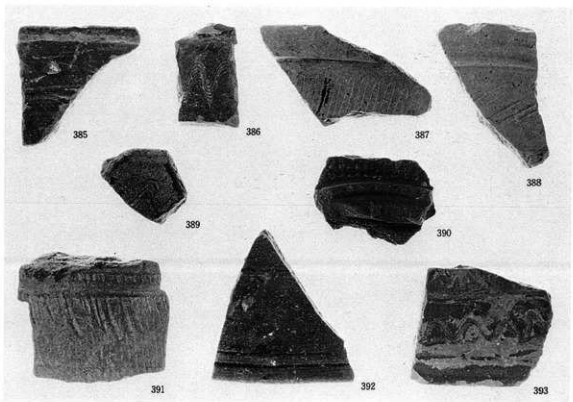
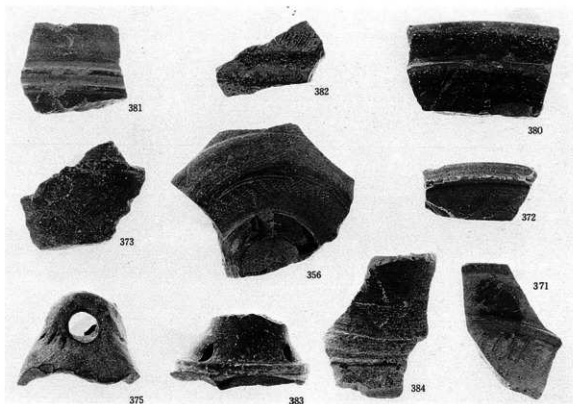
黄灰色土層













188



283



299



368



302



297



294



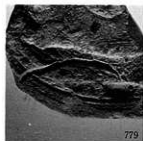
346



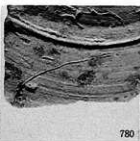
287



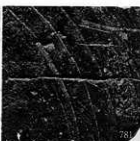
440



779



780



781



782



783



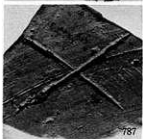
784



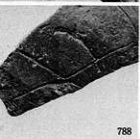
785



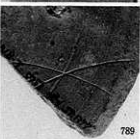
786



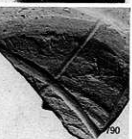
787



788



789



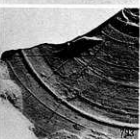
790



791



792



793



794



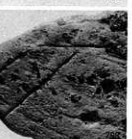
795



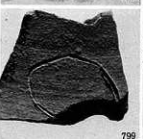
796



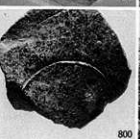
797



798



799



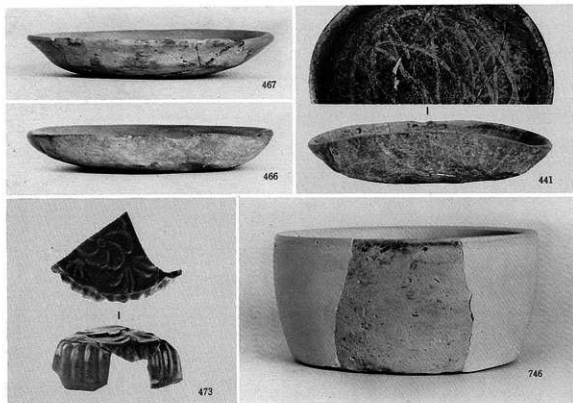
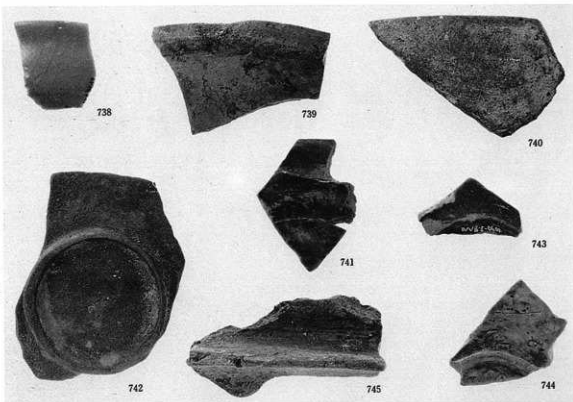
800



801



802





454



464



453



455



451



460



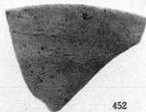
443



446



461



452



442



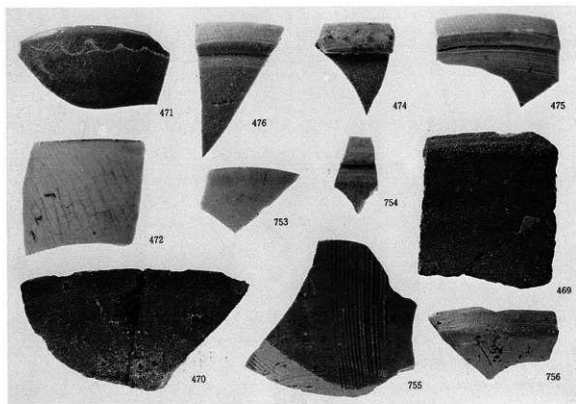
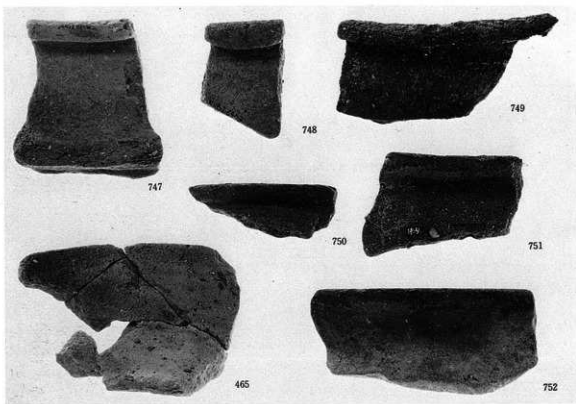
445

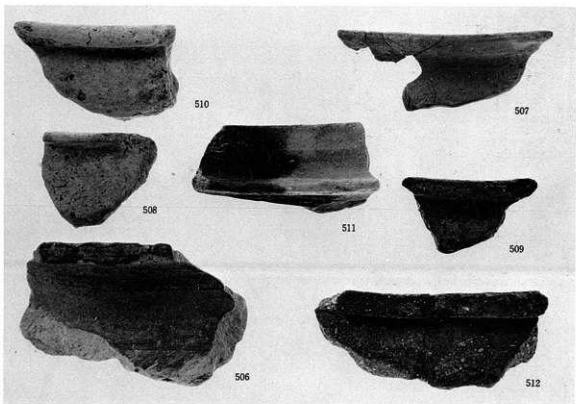
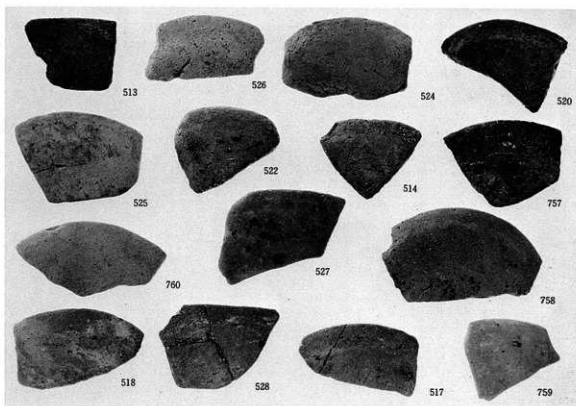


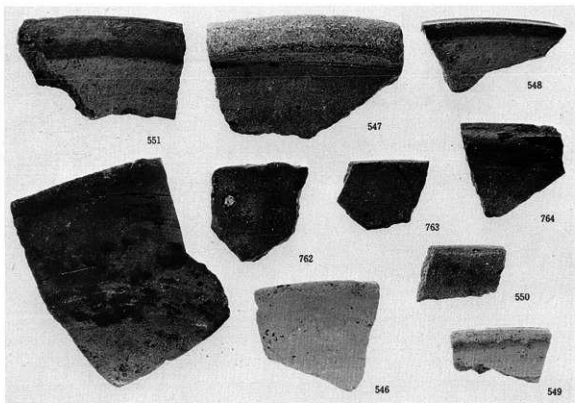
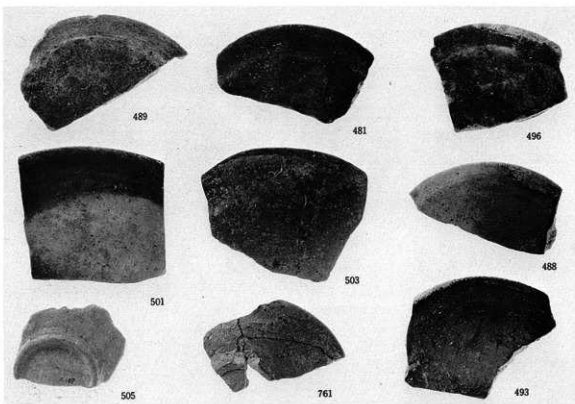
445



457









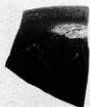
545



535



536



544



543



534



537



529



542



533



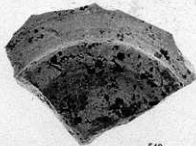
541



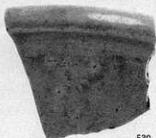
532



531



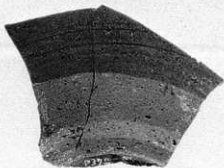
540



530



765



538





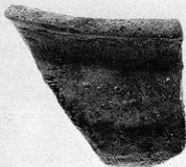
677



674



667



766



668



670



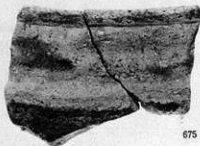
673



666



671



675



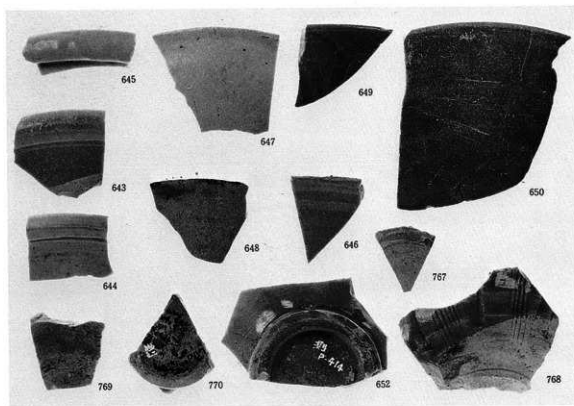
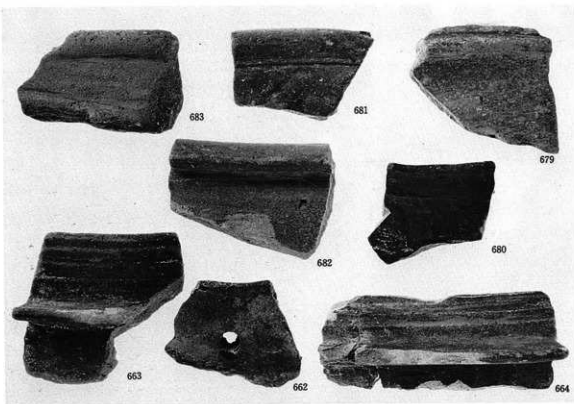
676



678



669

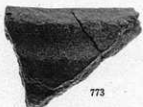




771



772



773



774



604



775



655



653



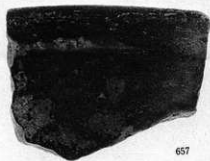
776



656



777



657



658



659



660



716



721



719



717



722



718



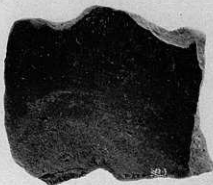
723



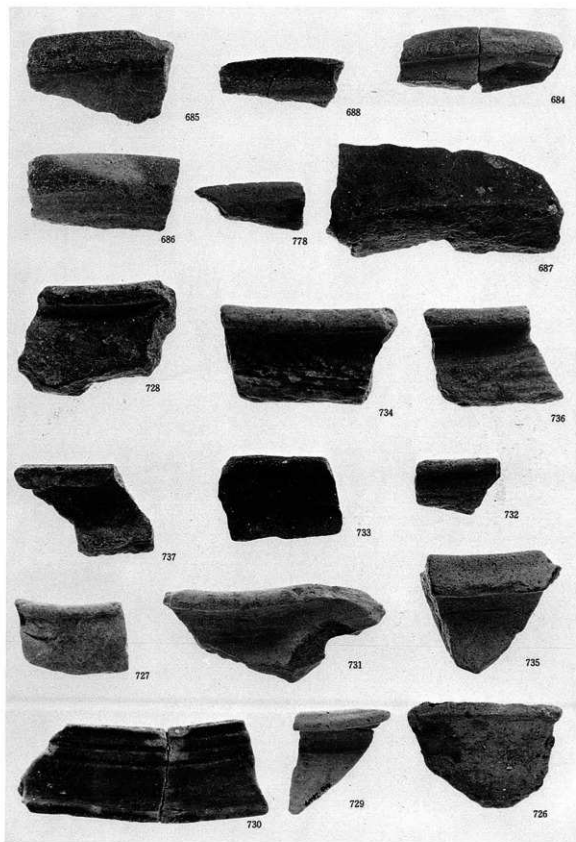
725

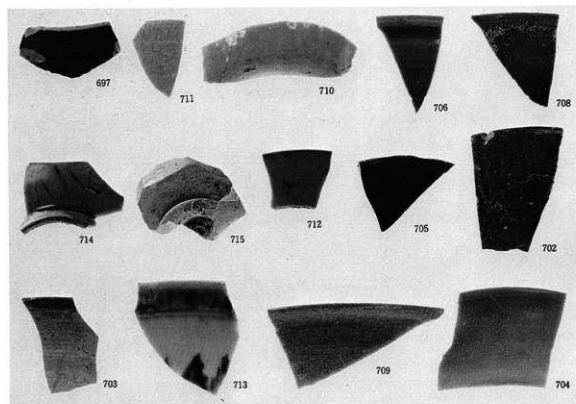
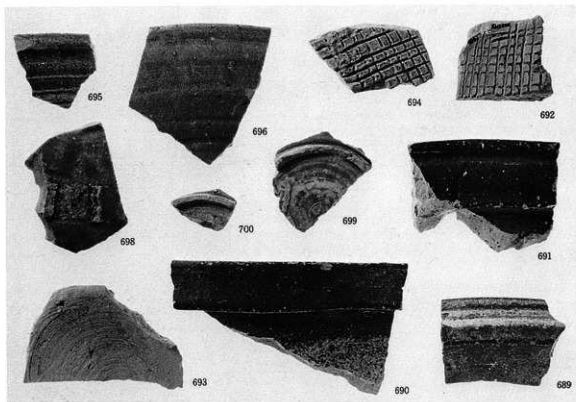


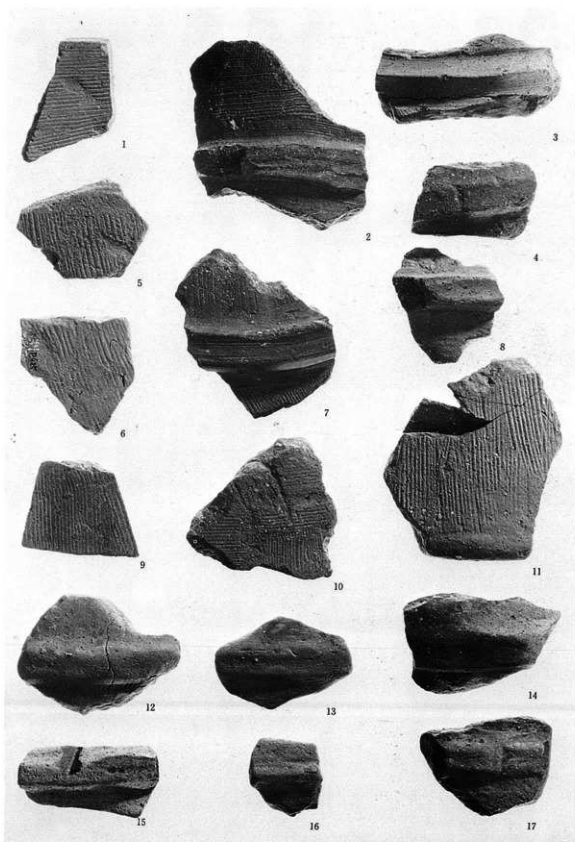
720

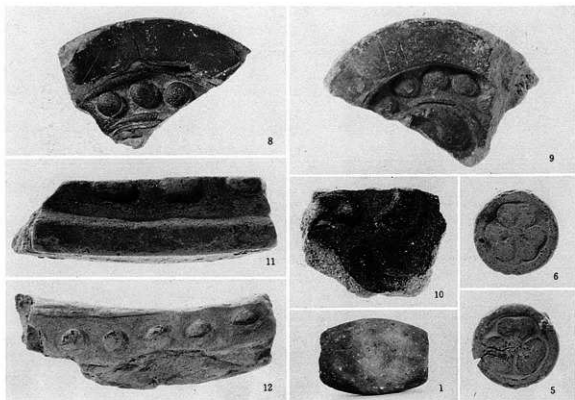
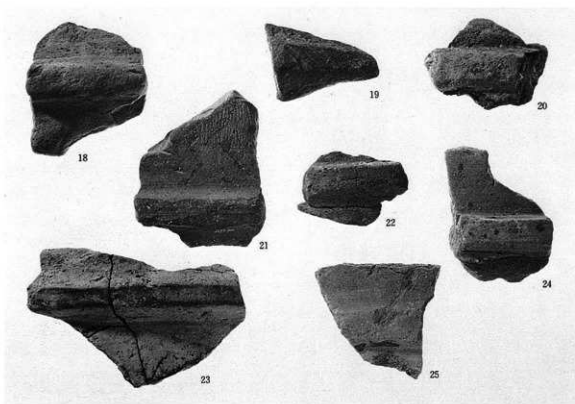


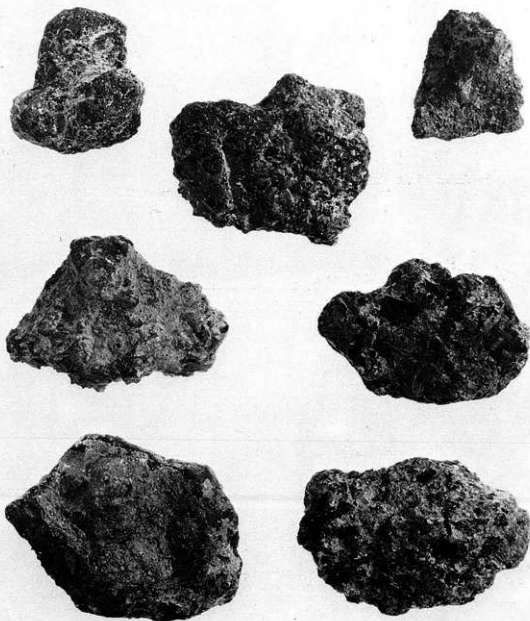
724













府道松原泉大津線関連遺跡
発掘調査報告書
II

— 西浦橋遺跡 —

1984年3月31日

編集著作
発行者

財団法人 大阪文化財センター
大阪市城東区蒲生2丁目10番28号

印刷所

株式会社 中島弘文堂印刷所
大阪市東成区深江南2丁目6番8号

新加坡南洋華僑總會
籌備委員會

II

——籌備委員會——

（一）籌備委員會

（二）籌備委員會

（三）籌備委員會

（四）籌備委員會

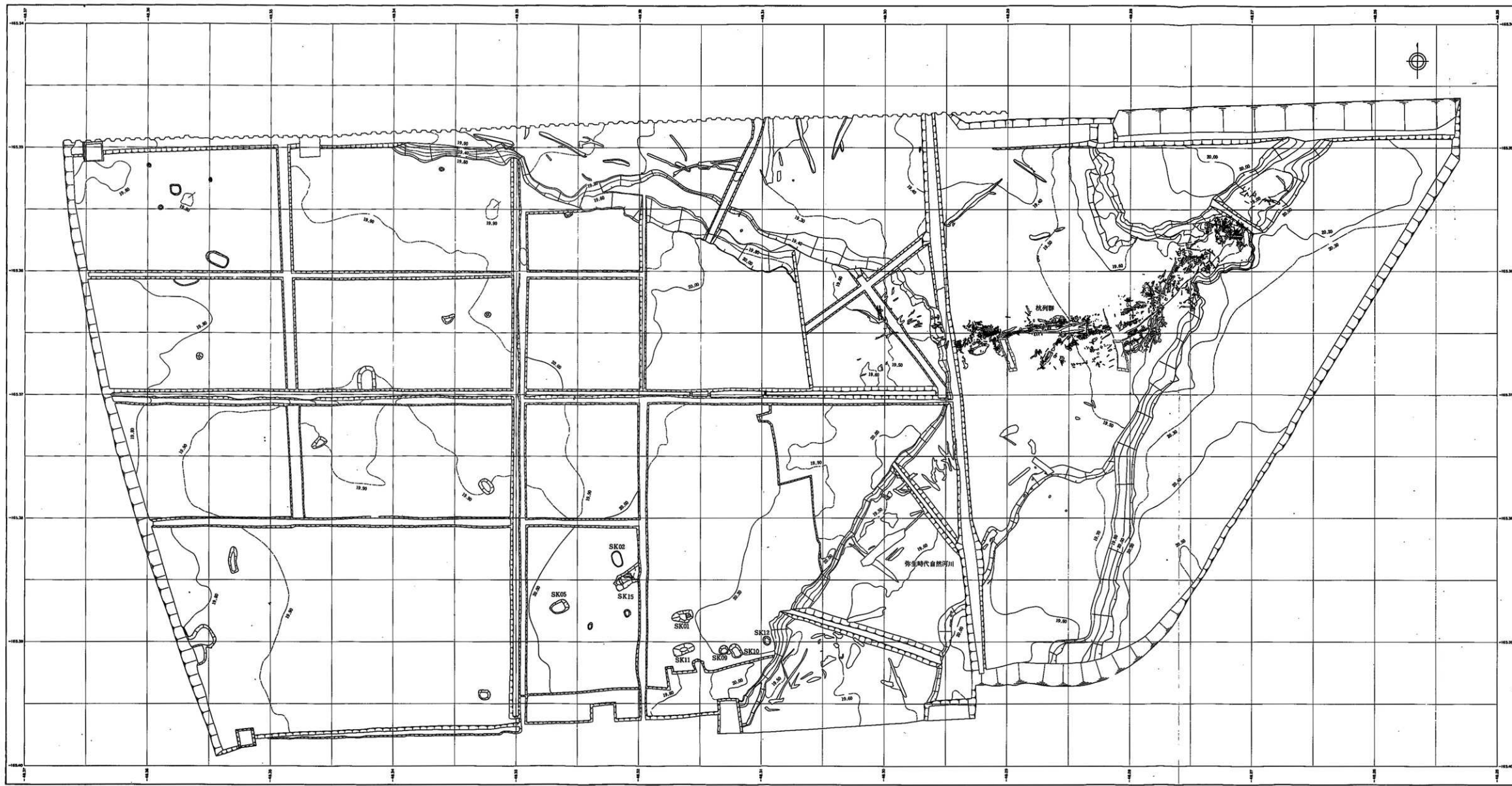
（五）籌備委員會

（六）籌備委員會

（七）籌備委員會

（八）籌備委員會

（九）籌備委員會



府道松原東大津線開通遺跡発掘調査報告書 II 付図 西浦橋遺跡 平面図(1:200)