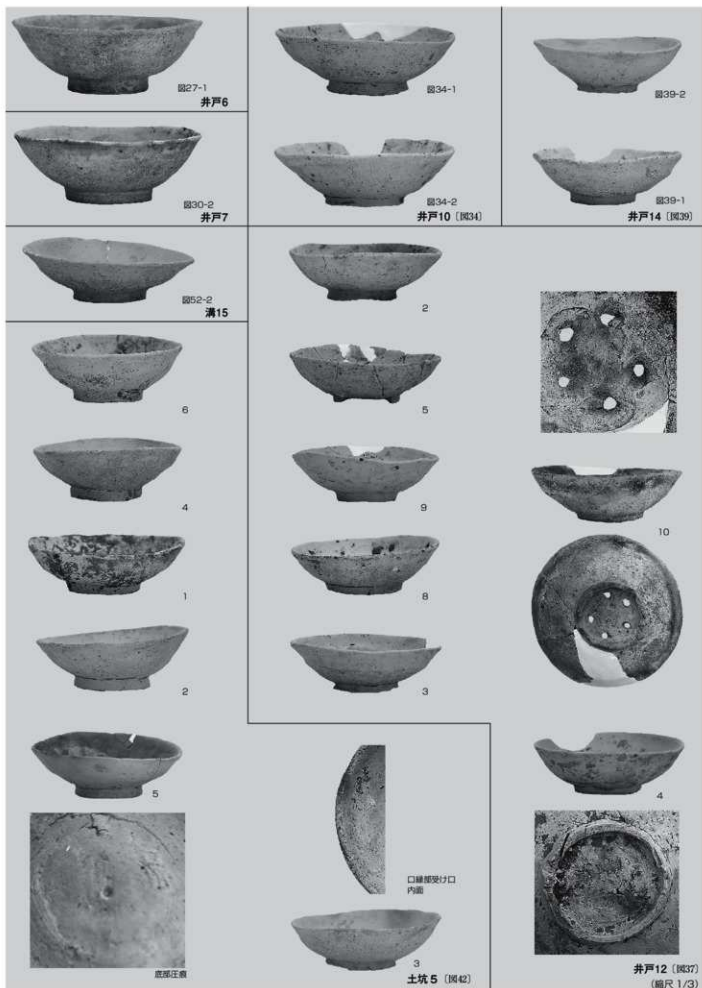
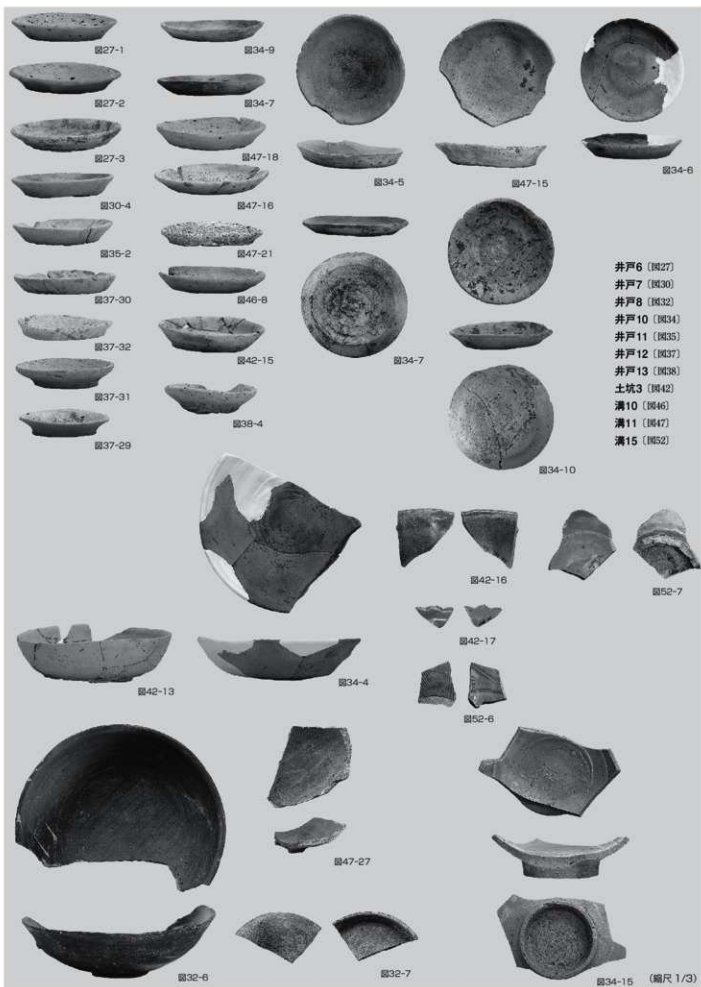


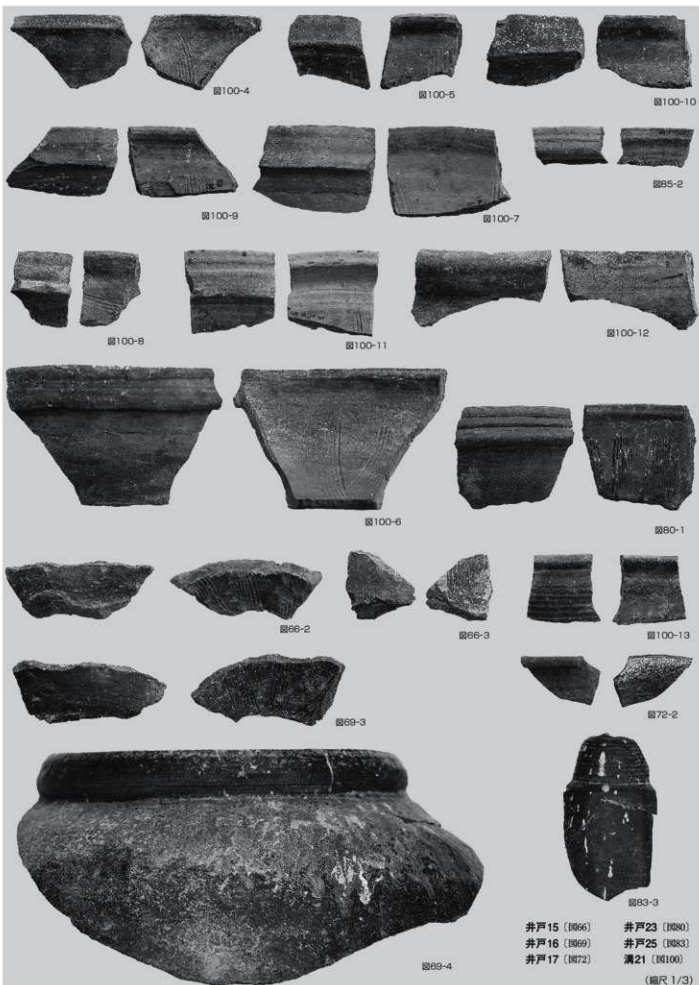
図版40 中世前半の溝出土遺物

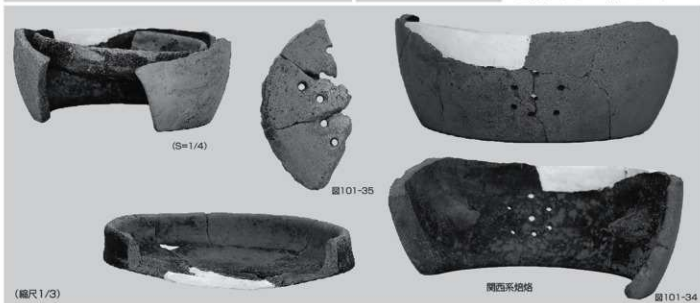
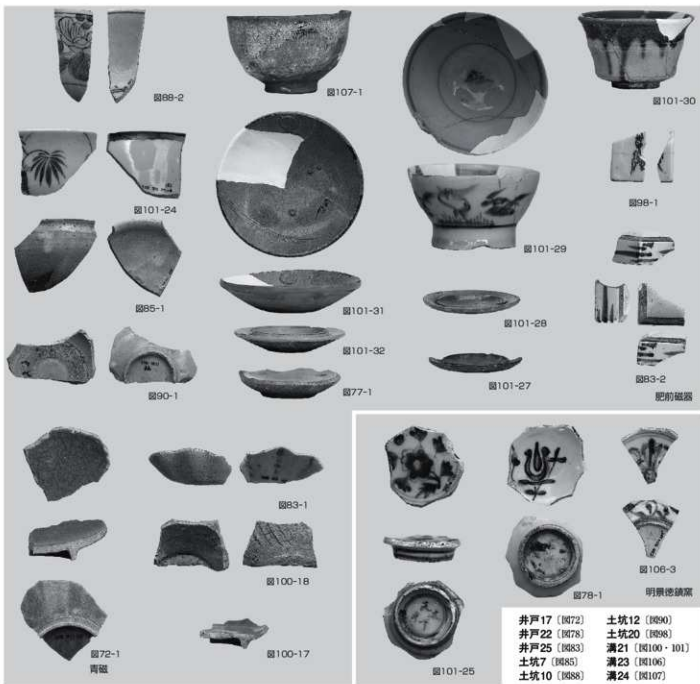




図版42 中世前半の土器(2)







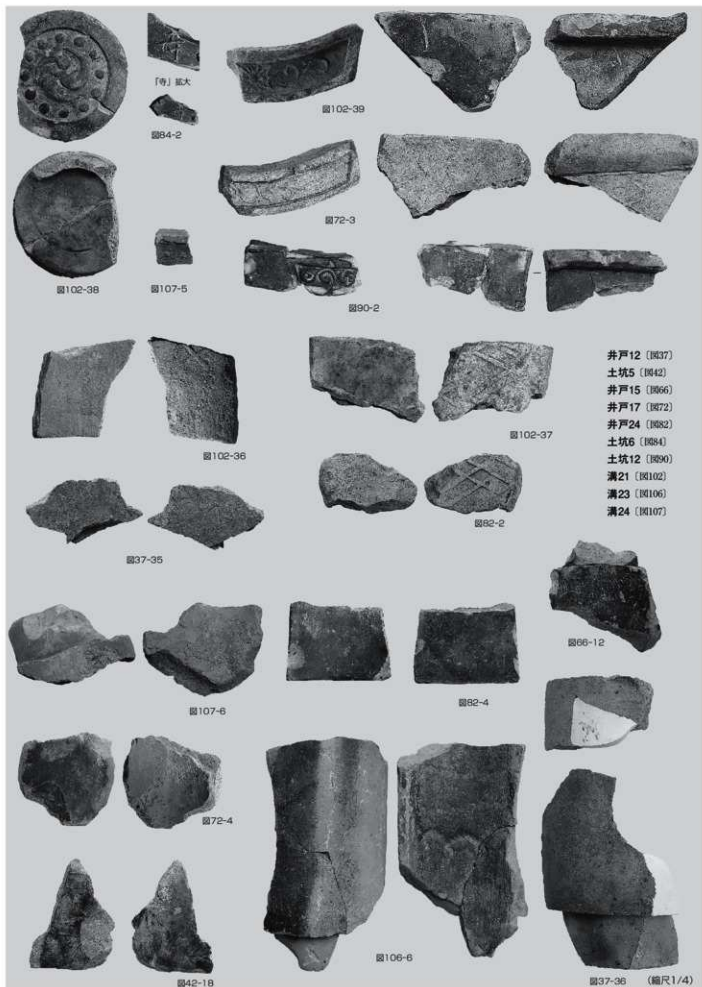




図102-42



図82-4



図107-7



図99-7



図72-5



図82-5



図34 T12 図60 T16 図19 T2 図32 T9 図19 T3 図19 T4 図108 T38 図109 T40



図60 T21 図19 T1 図101 T36



図74 T22 図109 T41 図109 T43 図109 T44 図34 T13 図109 T42 図19 T7



図101-T35



(縮尺2/3)

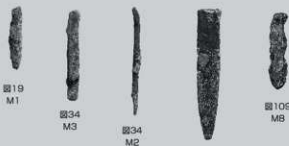


図19 M1 図34 M3 図34 M2 図69 M5 図109 M8

ビット (図19)

井戸8 (図82)

井戸10 (図34)

溝18 (図60)

井戸16 (図69)

井戸17 (図72)

井戸18 (図74)

井戸24 (図82)

溝21 (図101・102)

溝22 (図105)

溝24 (図107)

溝25 (図108)

包含層 (図72)



図101-M6

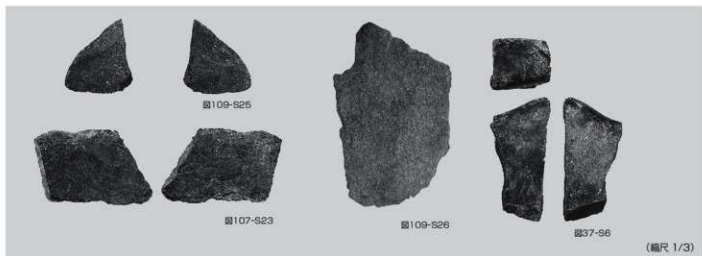


図80-M4

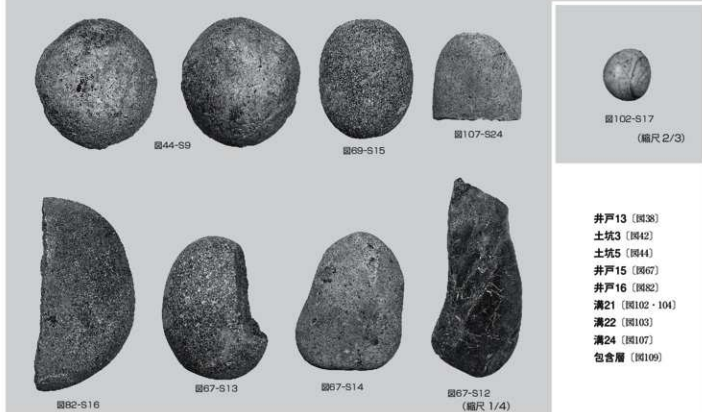
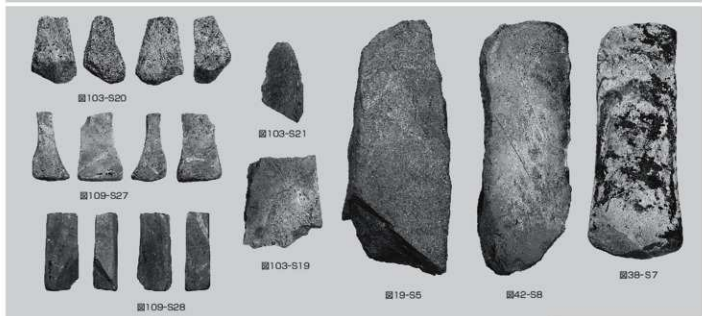


図105-M7

(別に指示あるもの以外は縮尺1/2)



(縮尺 1/3)



(縮尺 2/3)

- 井戸13 (図38)
- 土坑3 (図42)
- 土坑5 (図44)
- 井戸15 (図67)
- 井戸16 (図82)
- 溝21 (図102・104)
- 溝22 (図103)
- 溝24 (図107)
- 包含層 (図109)

(縮尺 1/4)



図67-S11



図103-S18

(縮尺 1/3)



図19-S3



図19-S4



図18-S1



図19-S5

掘立柱建物1-P5 (図18)
ビット (図19)

井戸15 (図67)
溝21 (図103)
溝22 (図105)



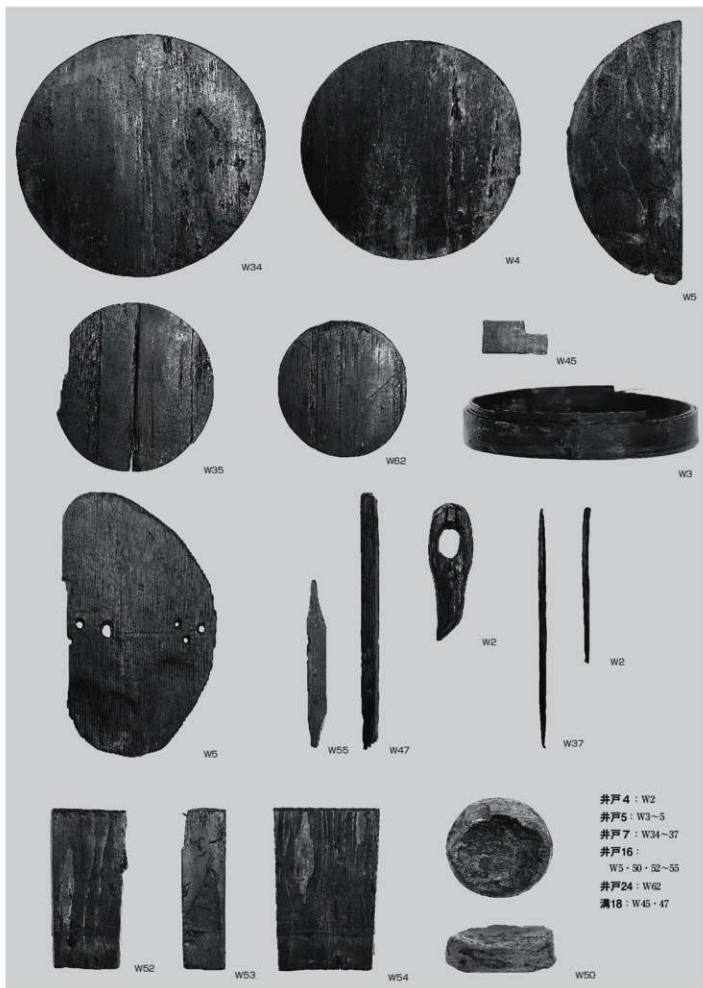
図105-S22

(縮尺 1/5)

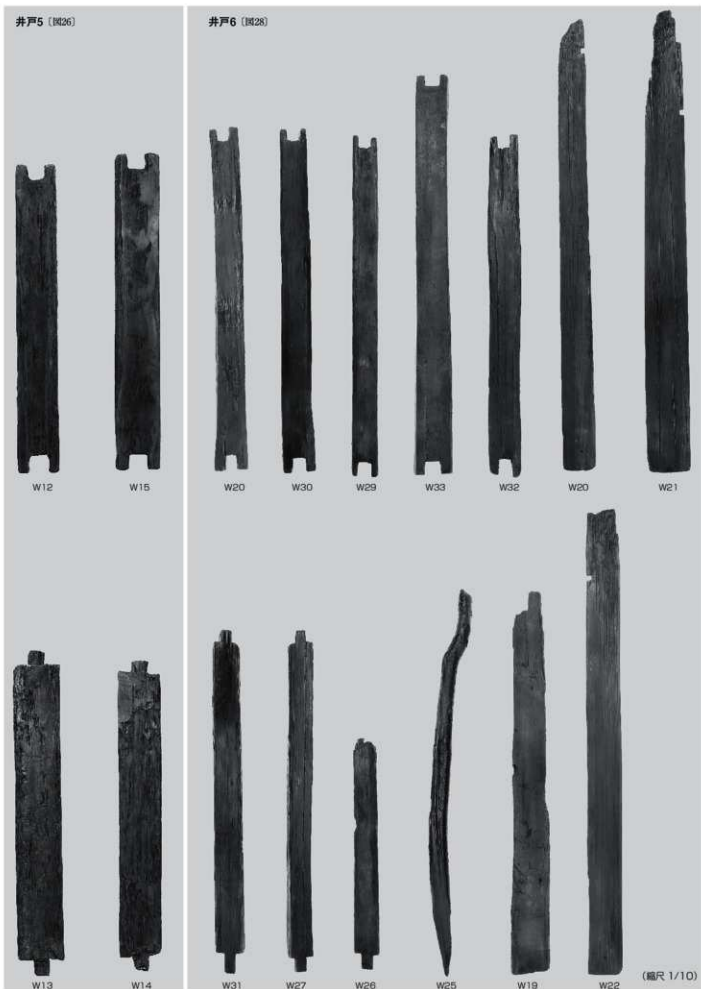


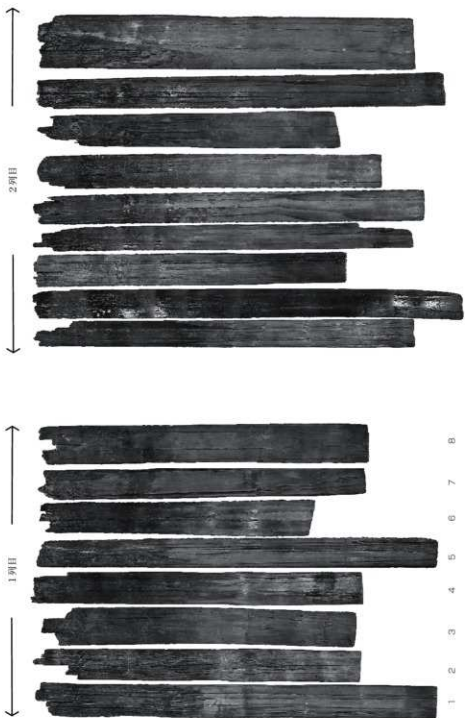
B1

井戸5 (図26) (縮尺 1/3)

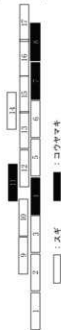


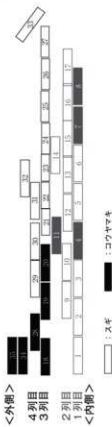
図版50 木製品(2) 井戸杵材



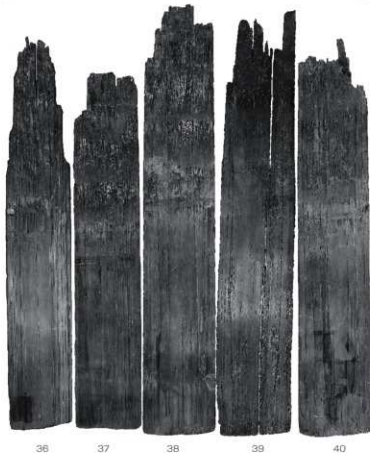


<外側>
2列目
1列目
<内側>





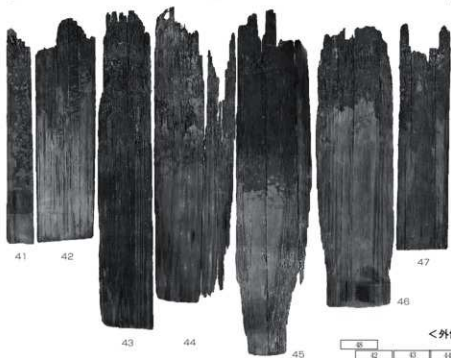
← 1列目 →



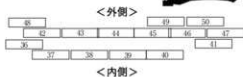
← 3列目 →



← 2列目 →



数字は表5月照



オルソ図版4 井戸7北側板

