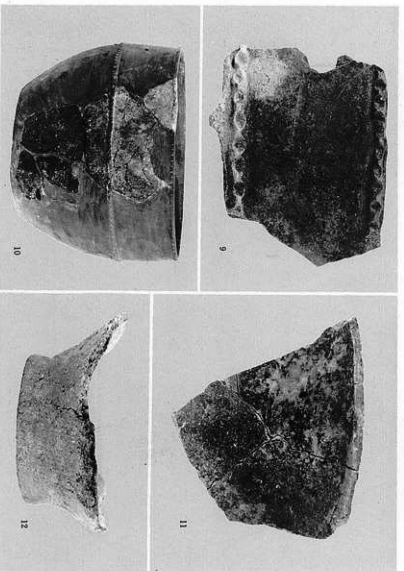
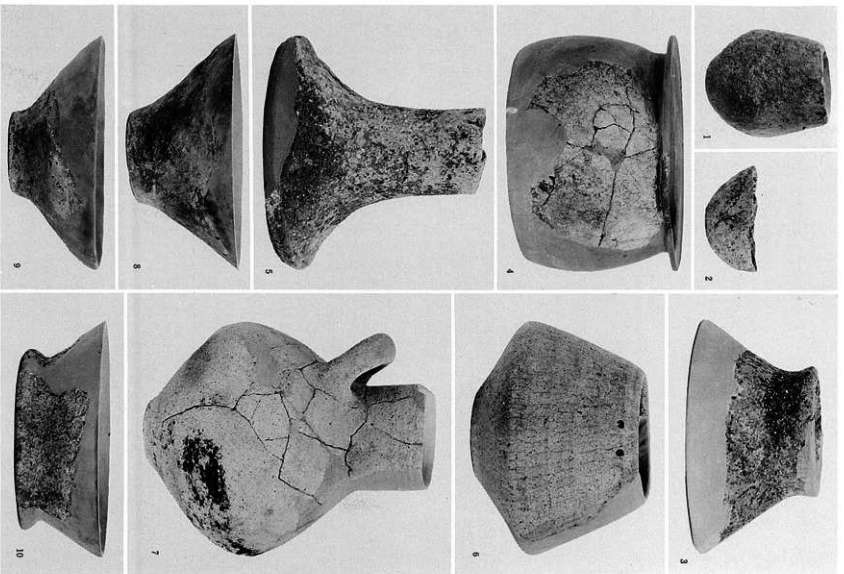
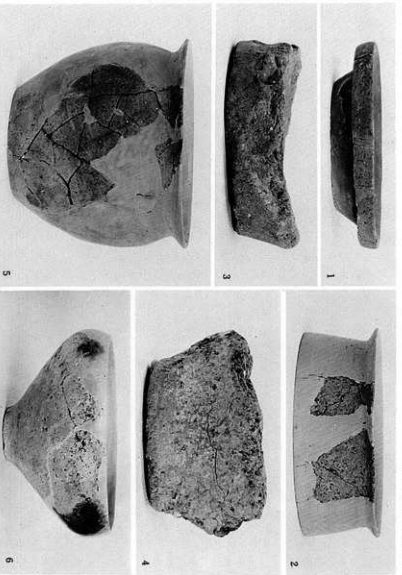


図版二八 縄文式土器及び弥生式土器

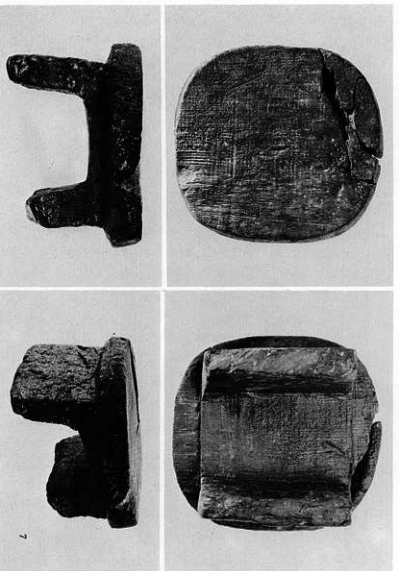


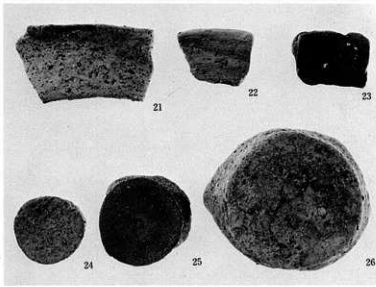
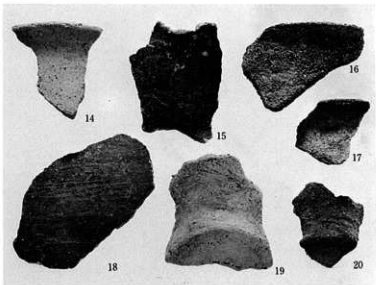
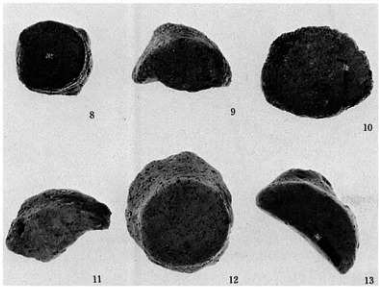
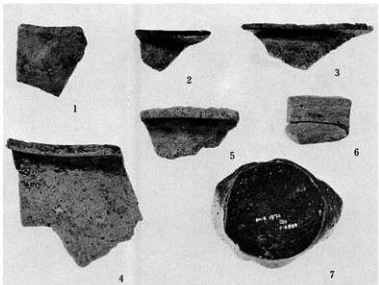


圖版二九 券生式土器

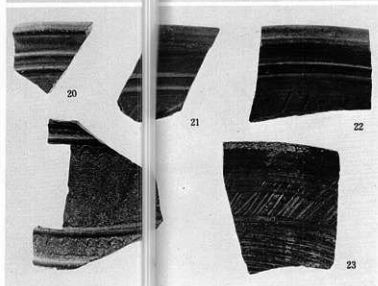
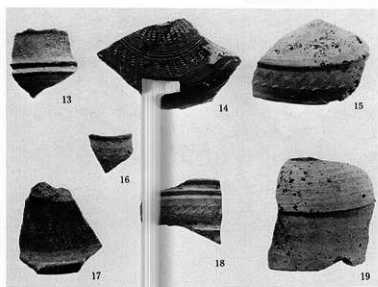
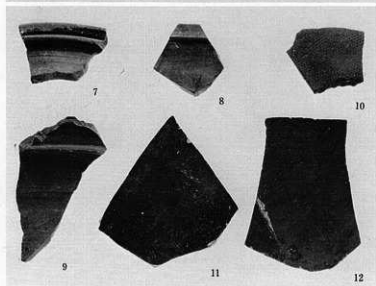
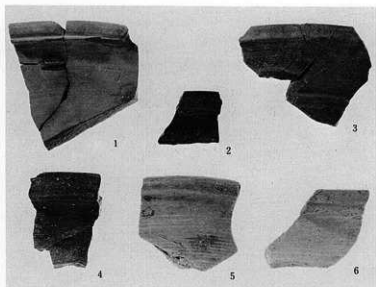


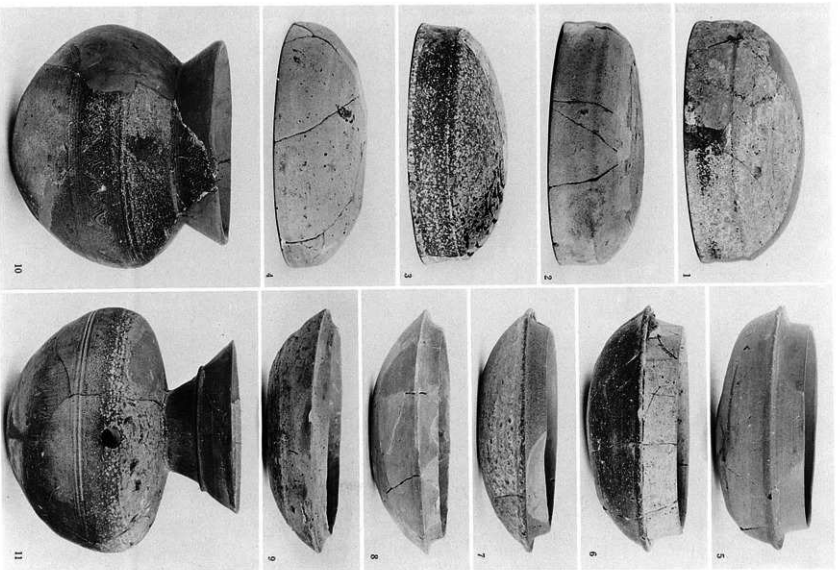
図版一三〇 弥生式土器及び木製椅子



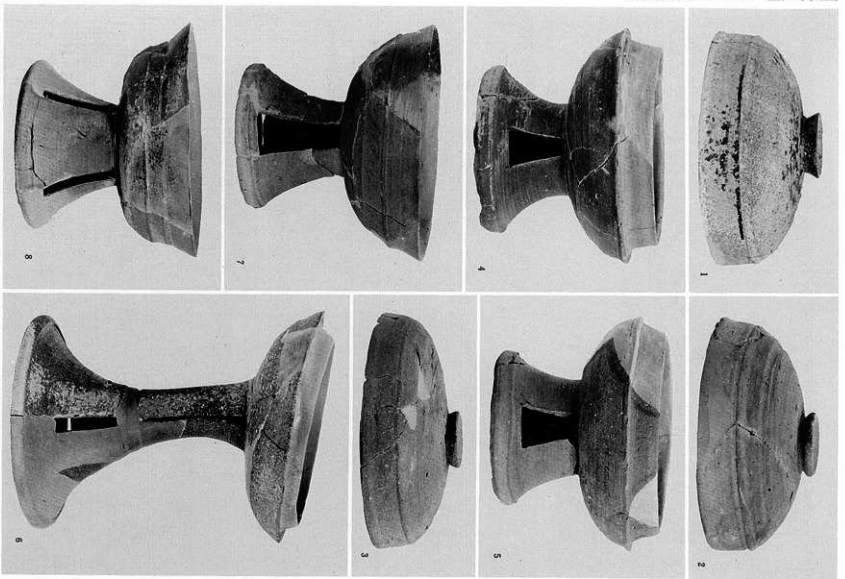


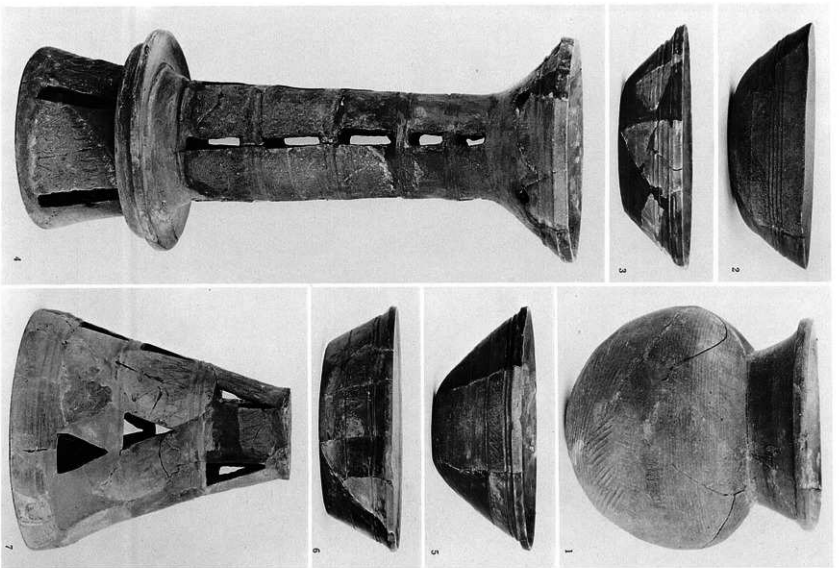
图版一三二 弥生式土器



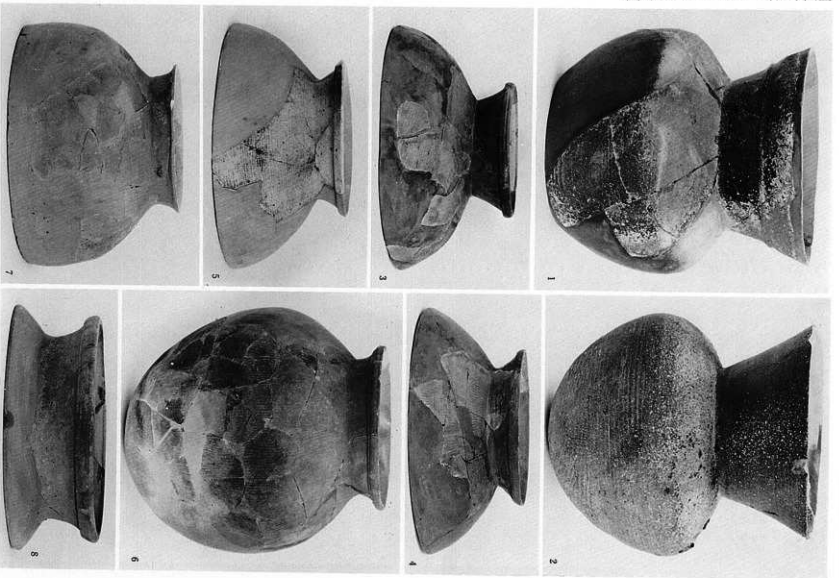


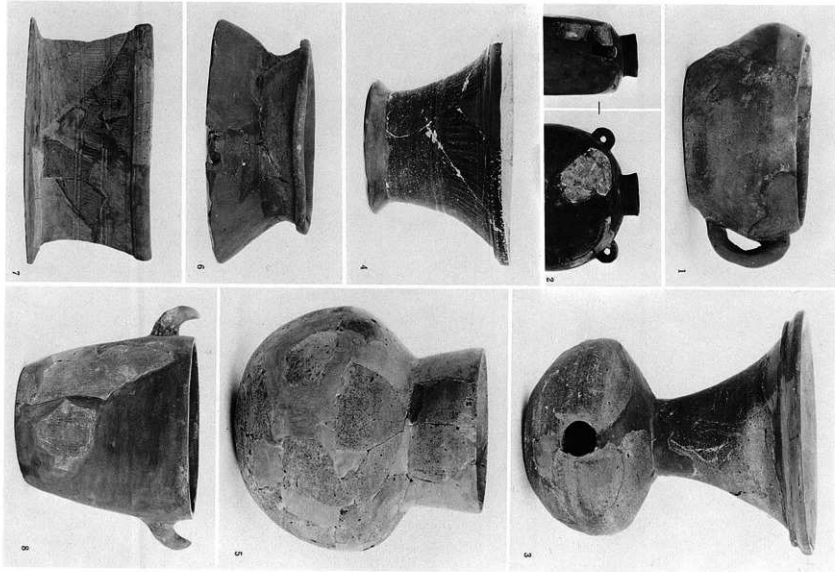
图版一三三 S D N 2 出土须臾器

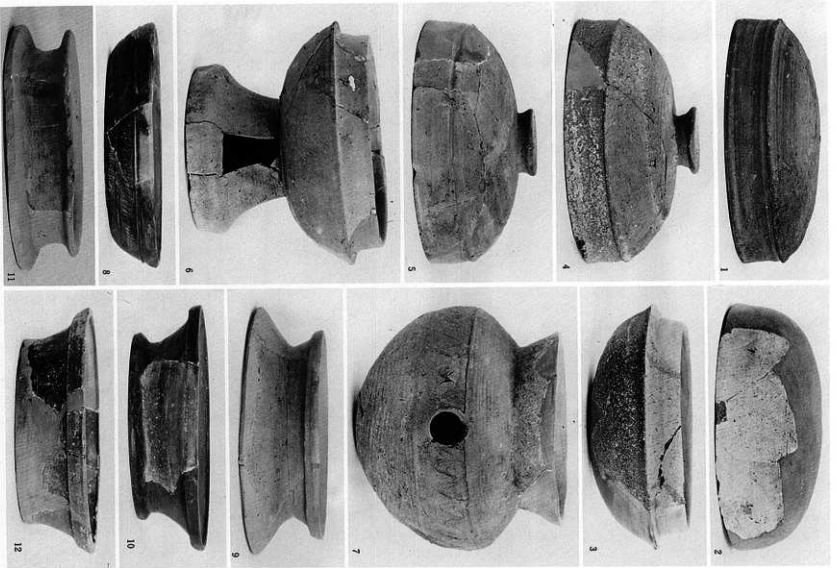




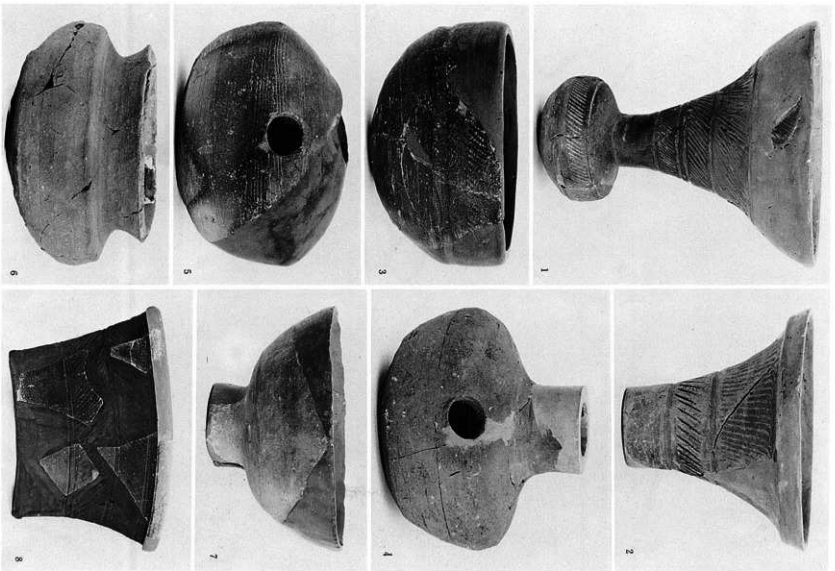
图版三五 SDN 2出土铜器



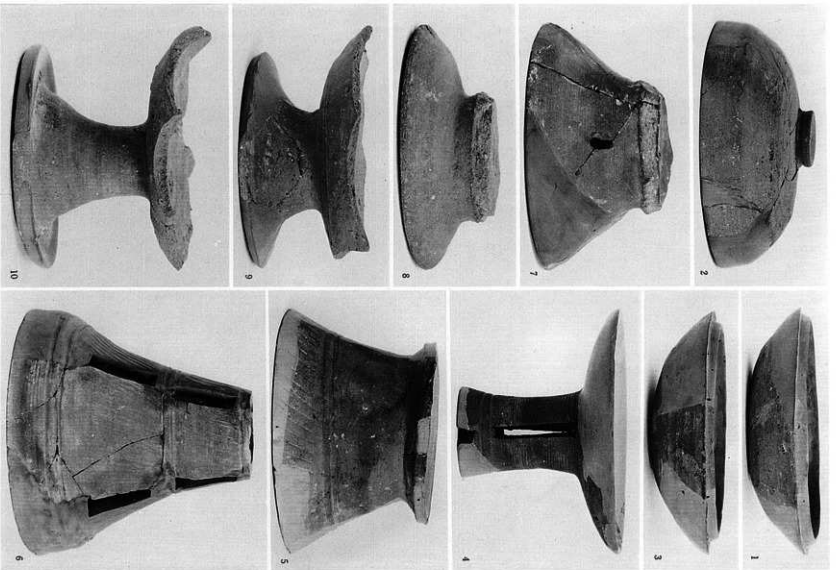




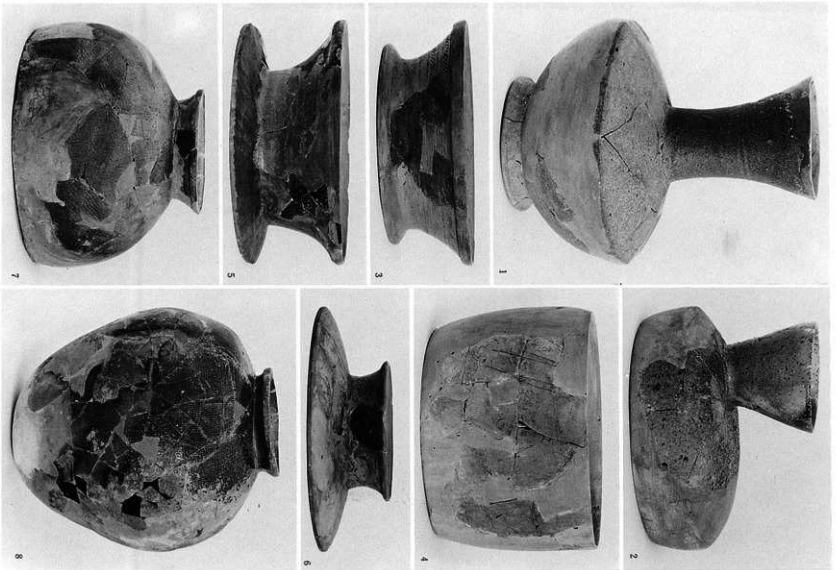
图版三六 包含磨出土须惠器



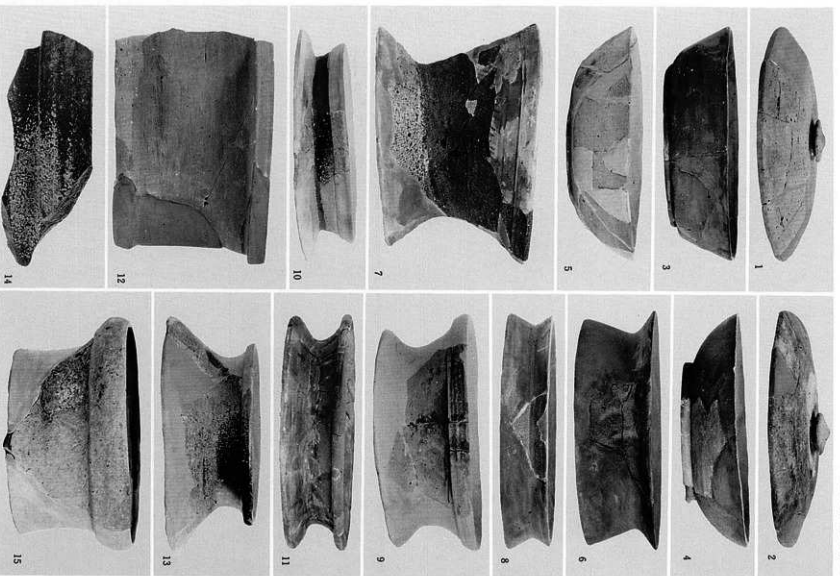
图版一三九 SDA 2出土须臾器



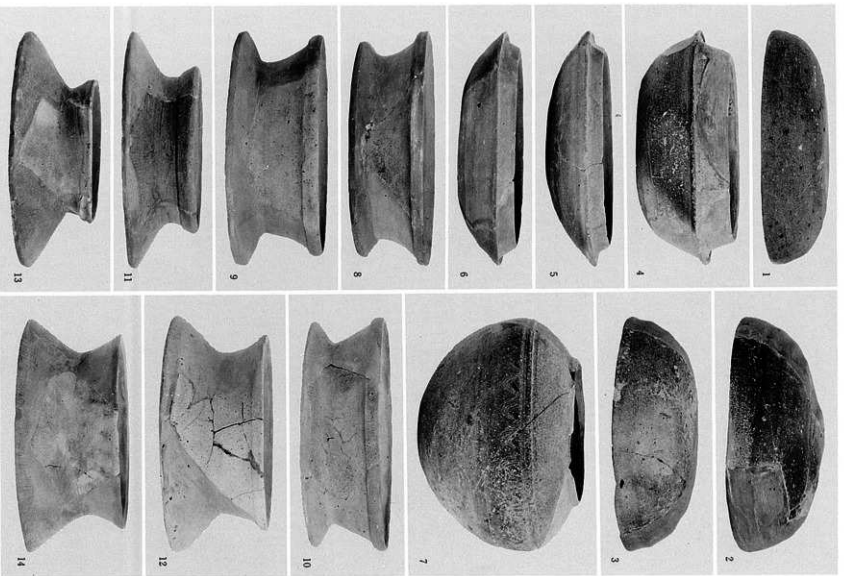
图版一四〇 SDA 2出土须臾器



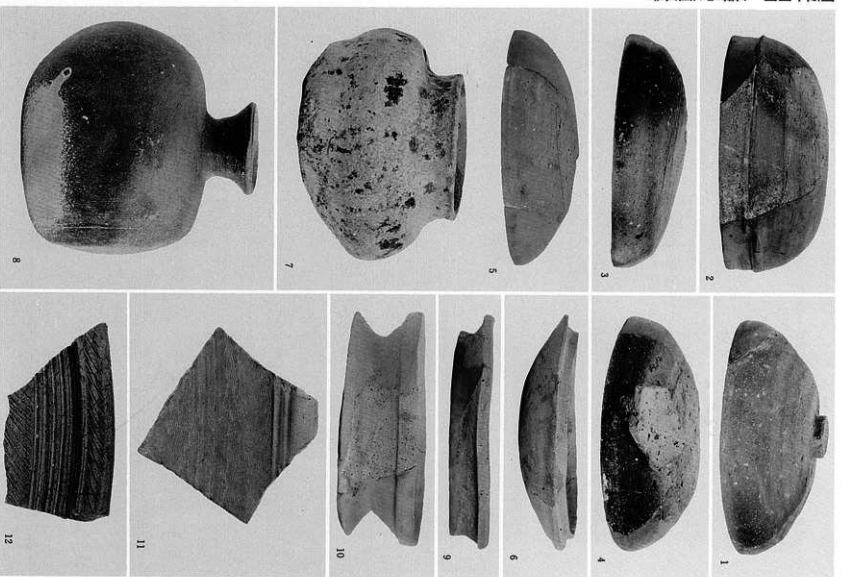
图版一四一 SDA 2出土须臾器



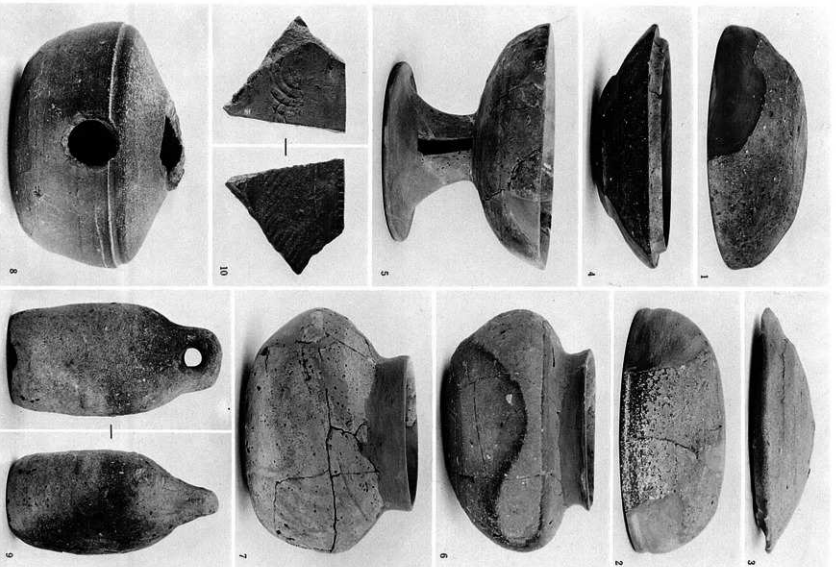
图版四一 SDA 2 · 5 出土遗物



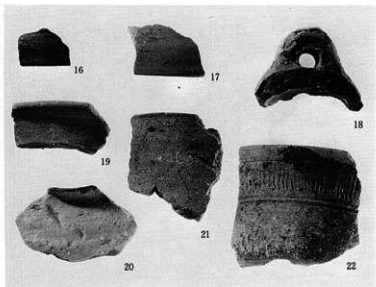
图版一四三 SDA 4出土须器



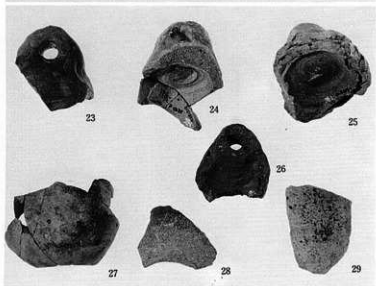
图版一四四 透梅出土须惠器



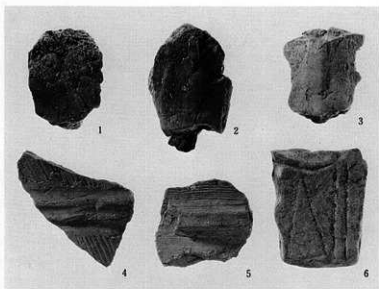
图版一四五 包含层出土须惠器



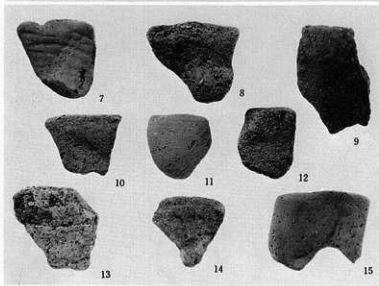
蜻蜓

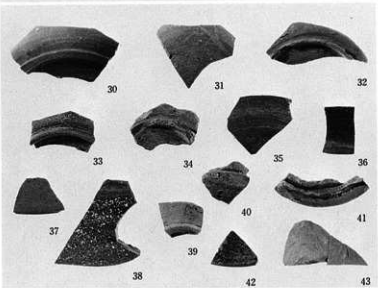
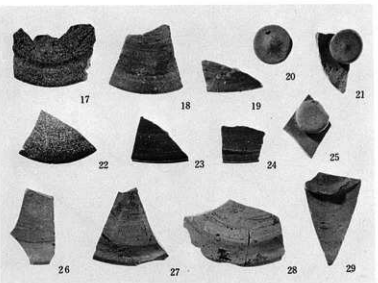


製埴土器

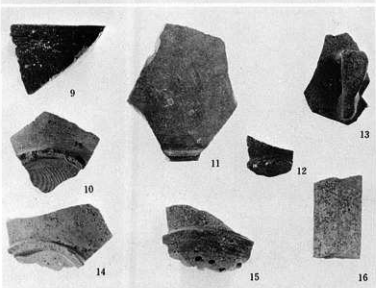
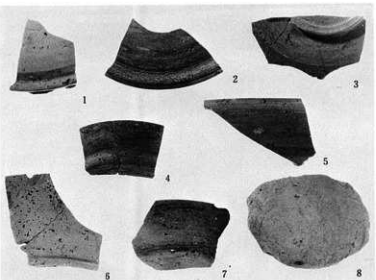


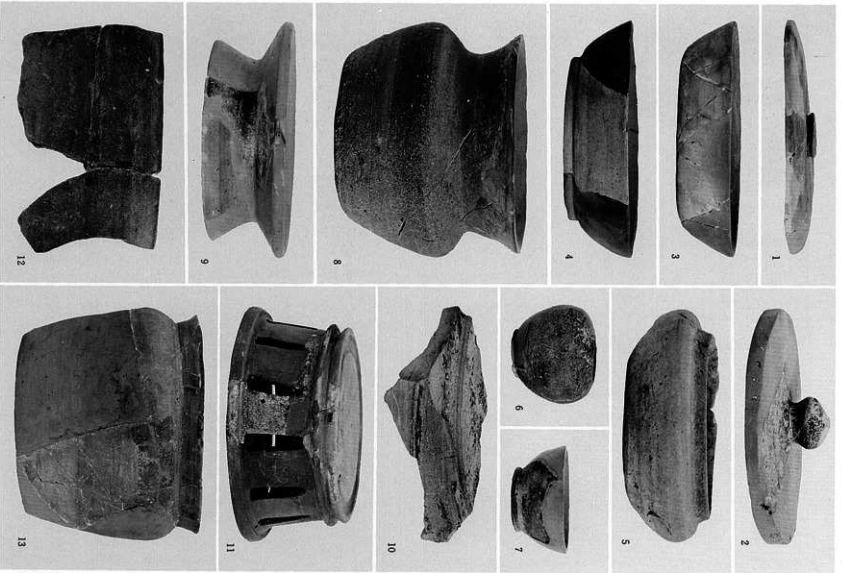
鑄羽口・埴輪



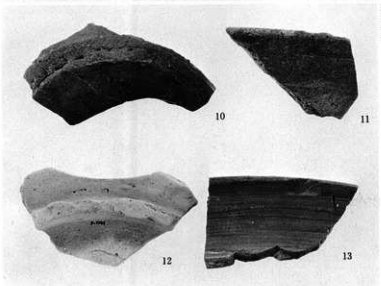
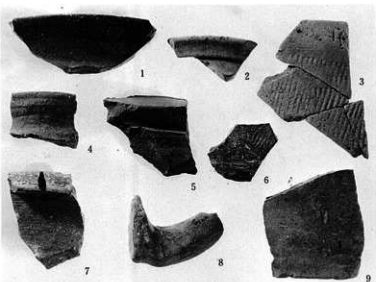
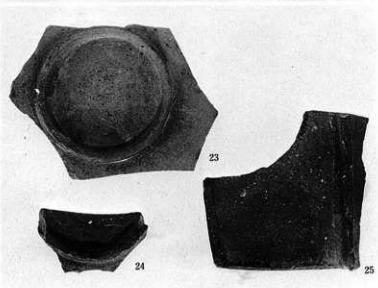
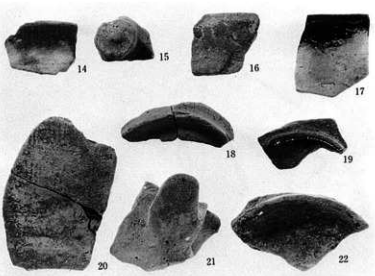


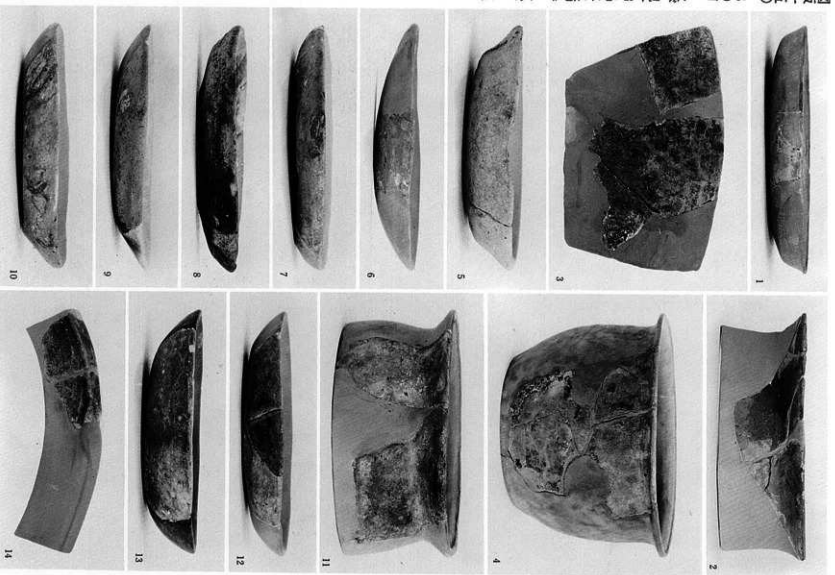
図版一四七 SDN 2及び包含層出土須惠器



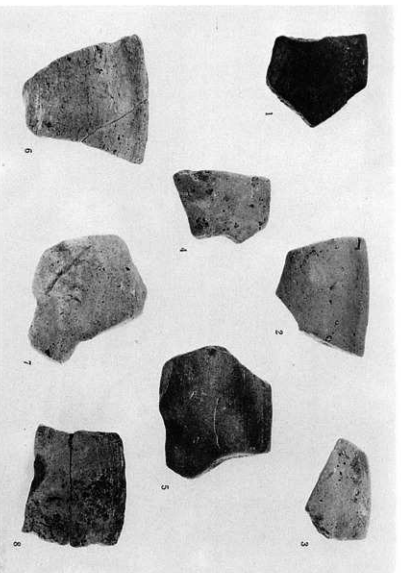


图版一四八 包含磨出土须惠器

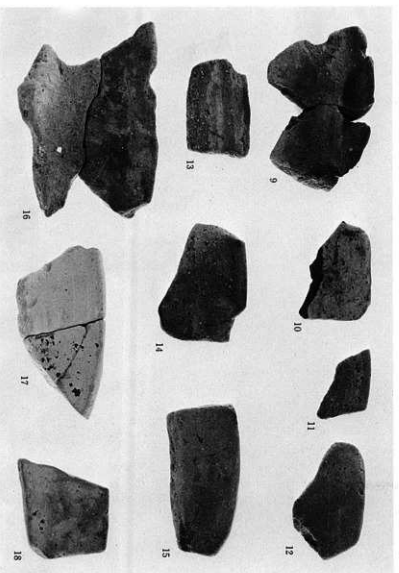


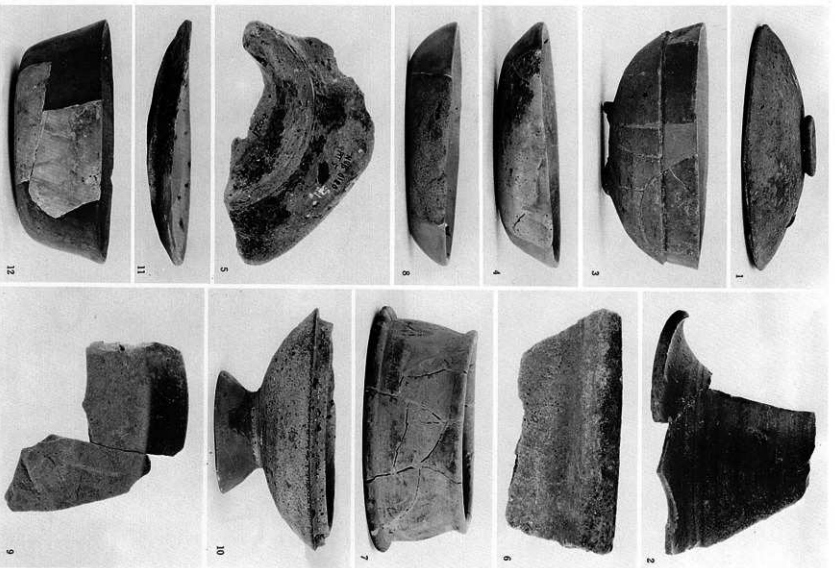


図版一五〇 S D N 2 及び包含層出土師器・瓦質土器

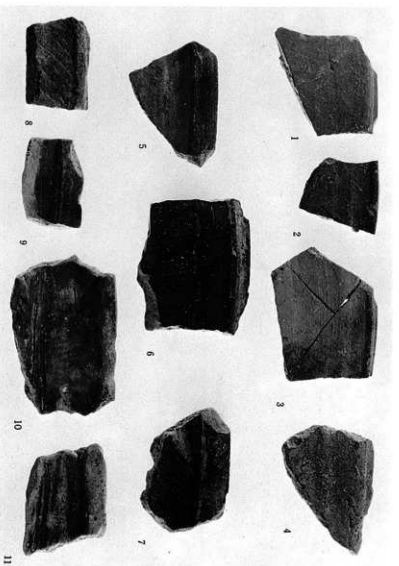


図版一五一 SDN2出土土師器及黑色土器

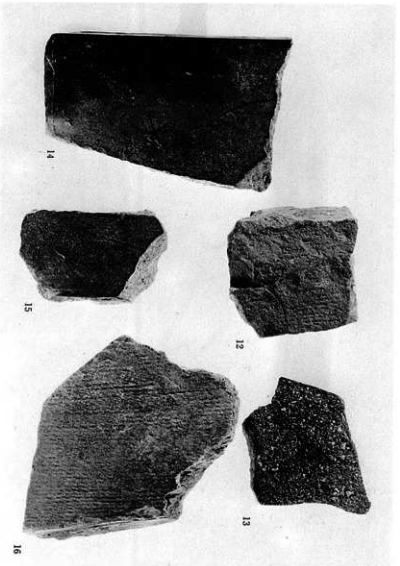


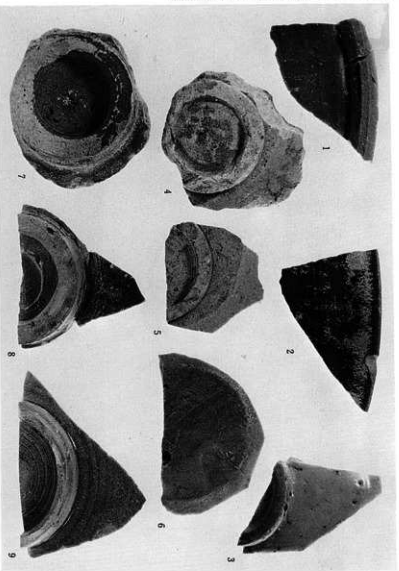


图版一五二 各选样出土遗物

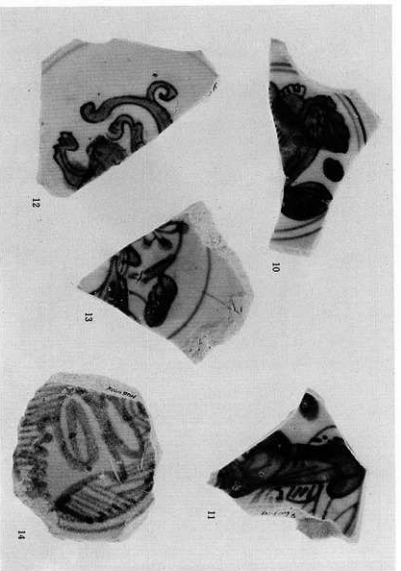


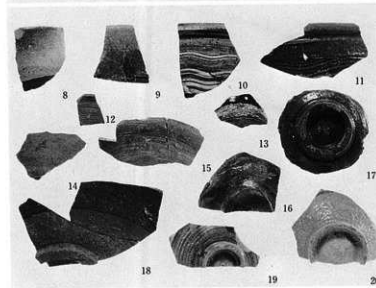
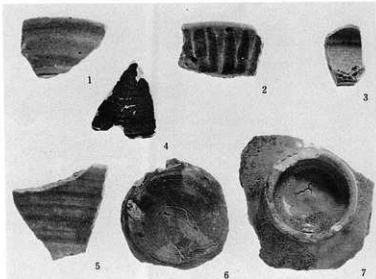
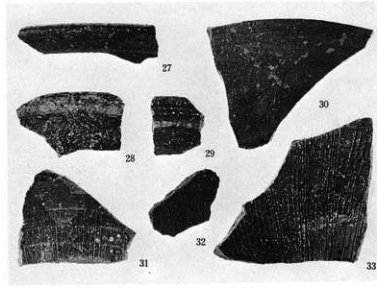
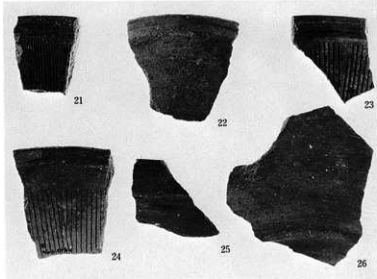
圖版一五三 包含層出土東播米須惠器·瓦質土器·平瓦





图版一五四 包含层出土中国陶磁器







1



2



4



4'



7



9



3



5



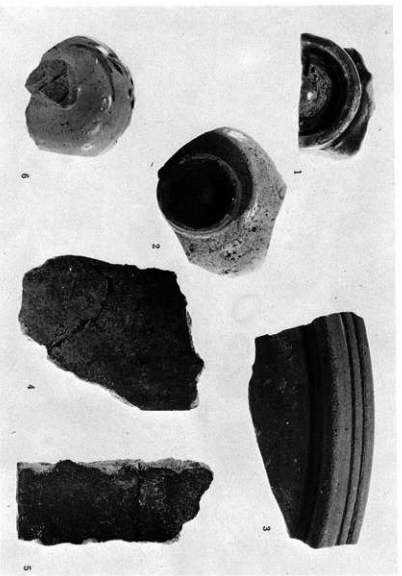
6



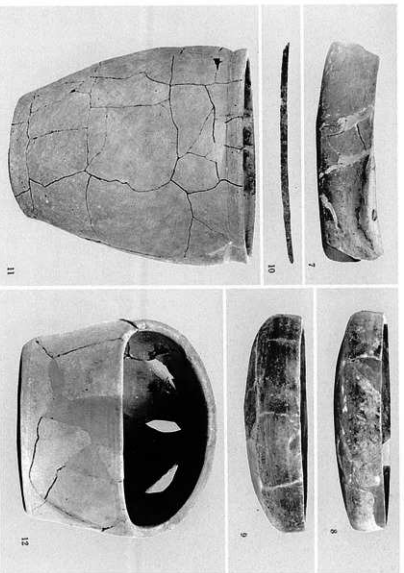
8

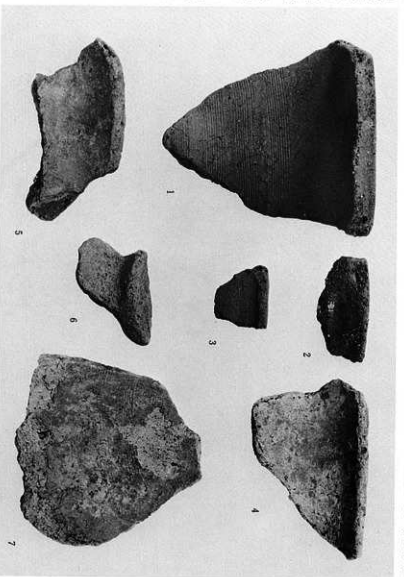


10



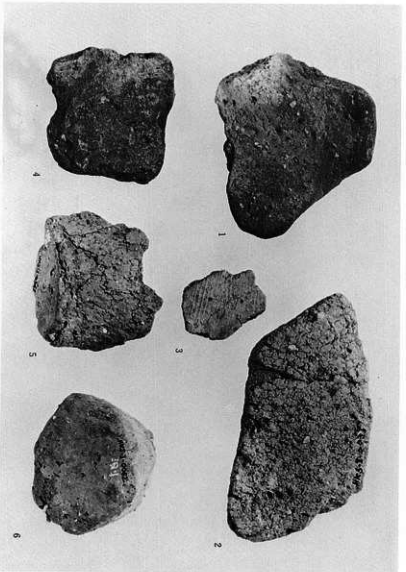
図版一五七 遺構出土遺物



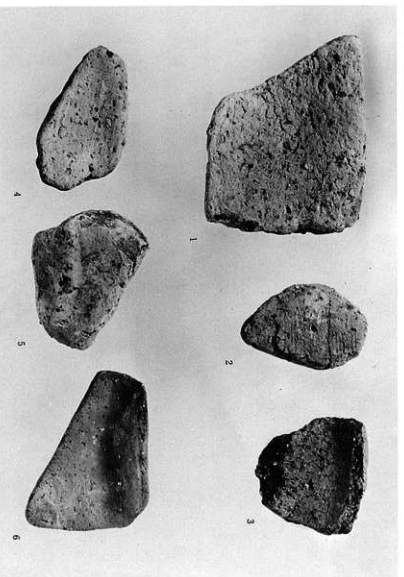


菱穴住居址内 (SBK1) 出土土器

図版一五八 菱木下遺跡第1調査区菱穴住居址内出土土器

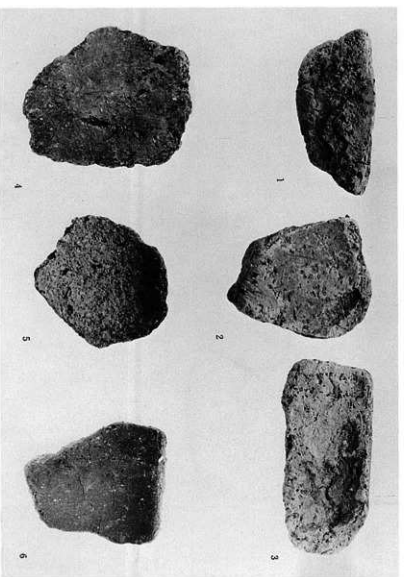


菱穴住居址内 (SBK2・3) 関連出土土器

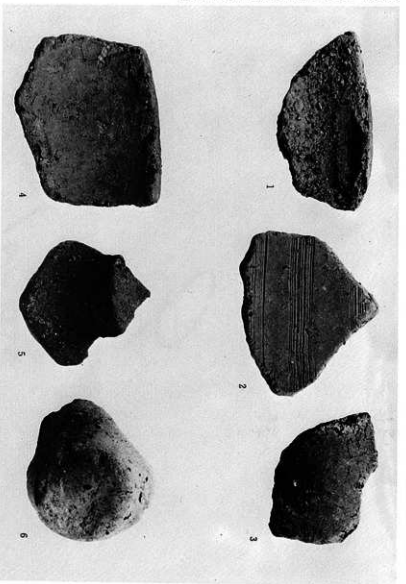


溝内 (SDA11) 出土器

図版一五九 溝状遺構内出土器

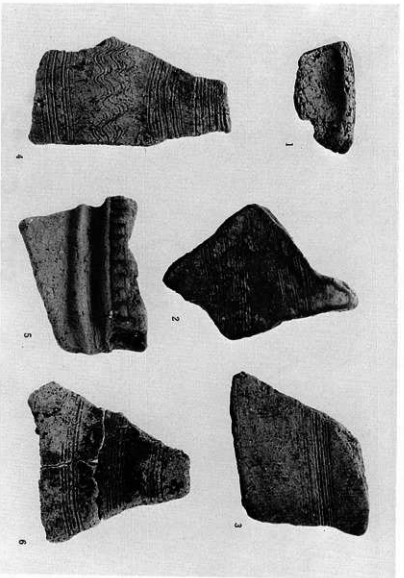


溝内 (SDA2) 出土器



図版一六〇 方形周溝墓内出土土器

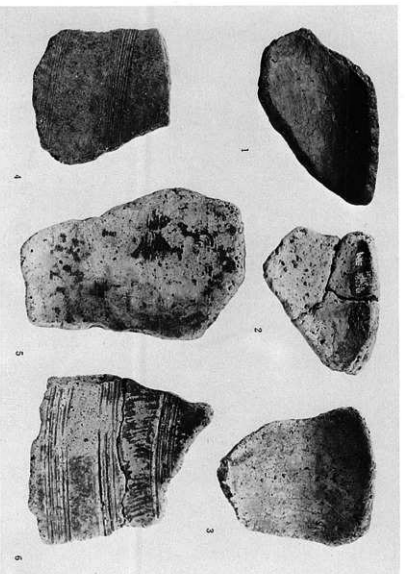
方形周溝墓内 (ST S1) 出土器



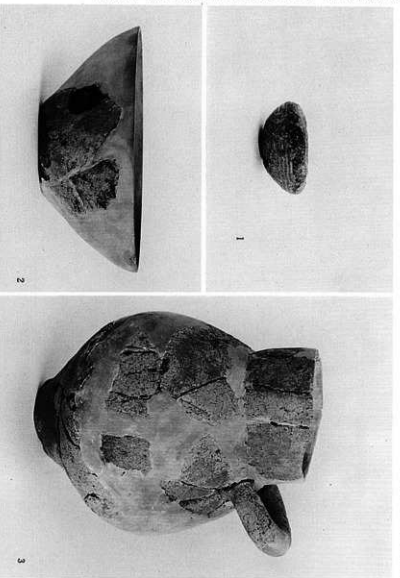
方形周溝墓内 (ST S2.3) 出土土器



方形周溝墓内 (ST 4) 出土器

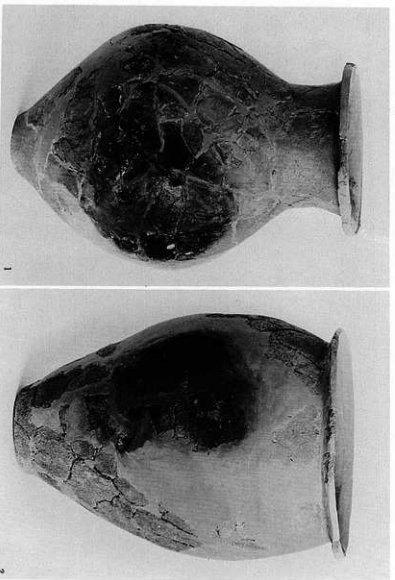


方形周溝墓内 (ST 2.5) 出土器

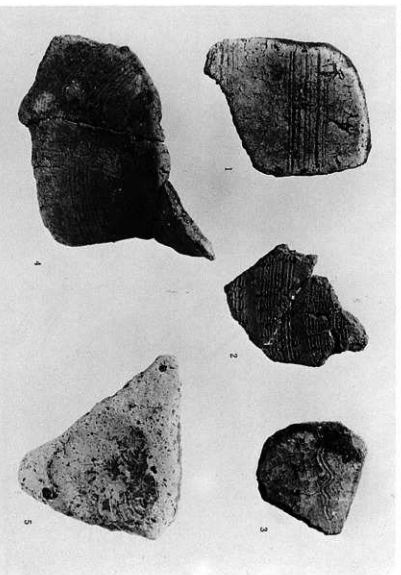


図版一六二 方形周溝内出土器および土器棺

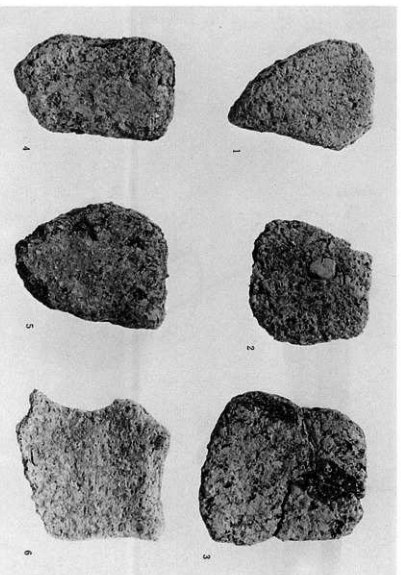
方形周溝内 (STS1・6) 出土器



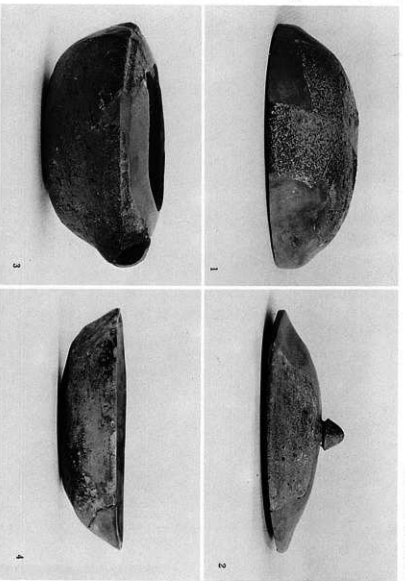
周溝内 (STP2・3) 出土器棺



図版一六三 方形周溝墓内出土器

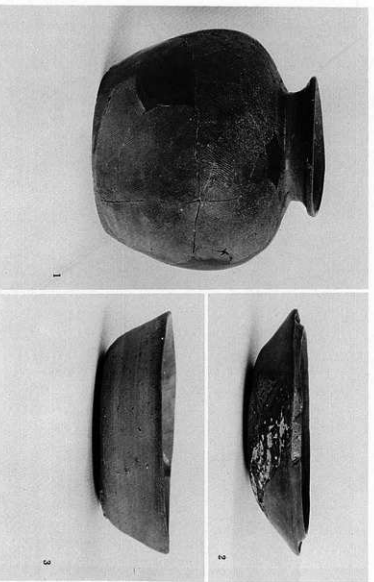


方形周溝墓内 (ST. S. 6. 7) 出土器

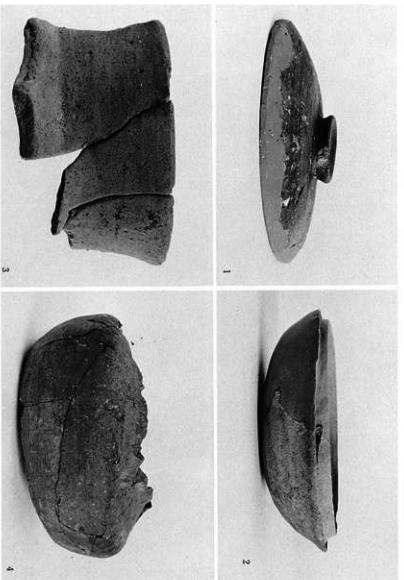


遺構面蔵上出土土器

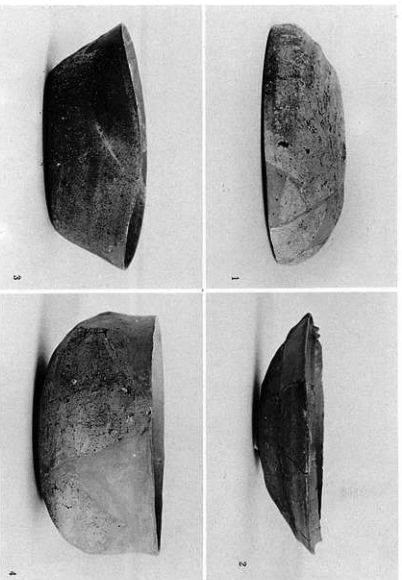
図版一六四 遺構面蔵上出土土器



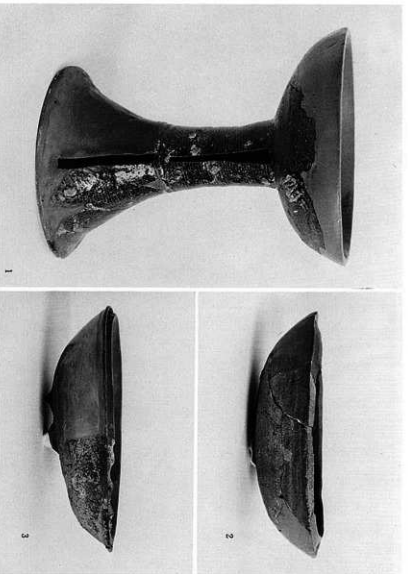
遺構面蔵上出土土器



濠穴住居址内 (SBK 5) 出土器

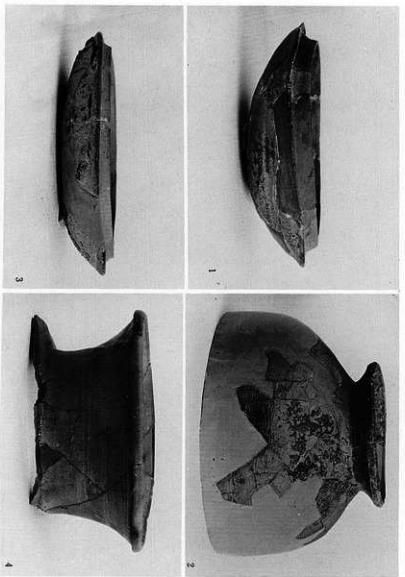


濠穴住居址内 (SBK 6) 出土器

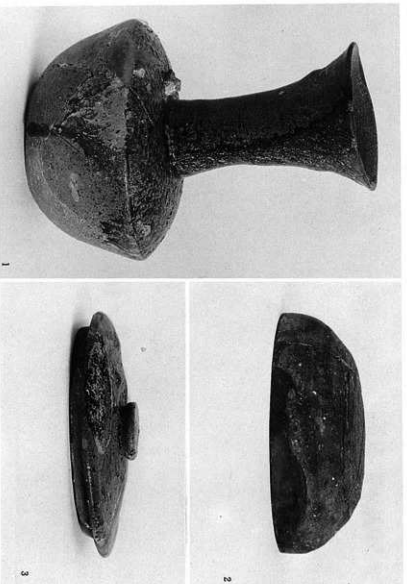


竪穴住居址内 (SBK 6) 出土土器

図版一六六 竪穴住居址・方形周溝墓・溝状遺構内出土土器

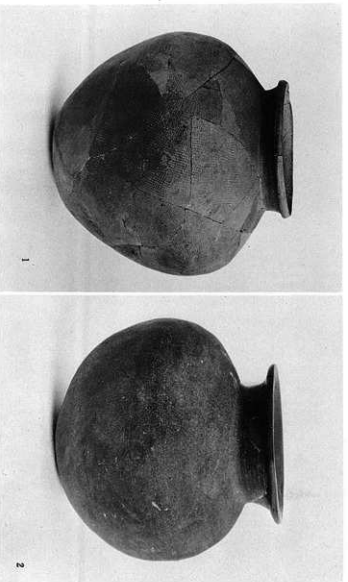


方形周溝墓 (STS1)・溝 (SDA 4) 内 出土土器

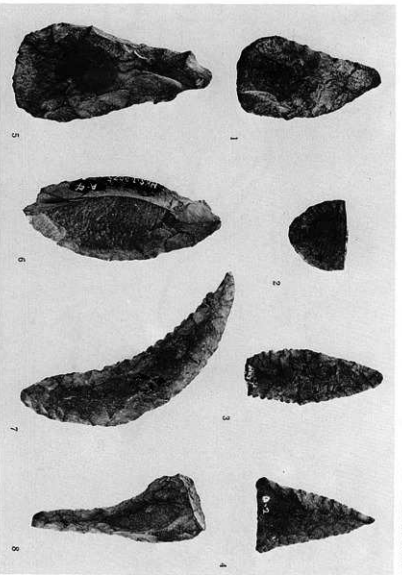


図版一六七 溝状遺構内出土器

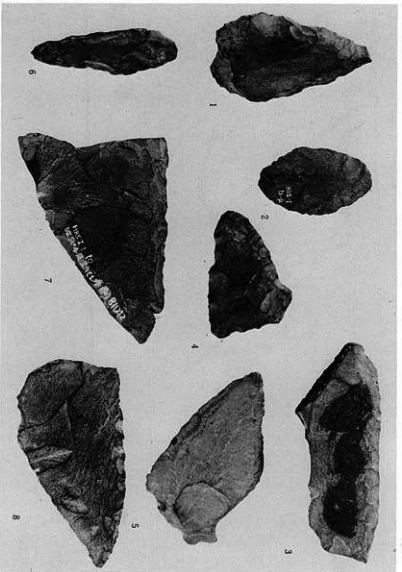
溝内 (SDA4) 出土器



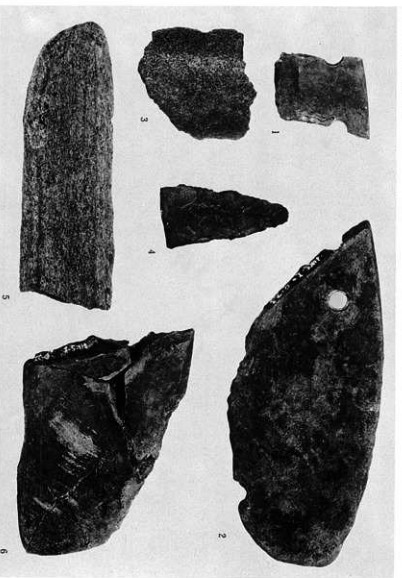
溝内 (SDA4) 出土器



整穴住居址内 (SBK1・3) 出土石器

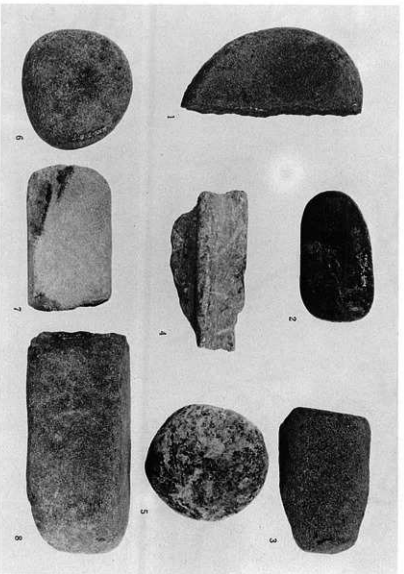


方形周溝墓内 (STS1・4・6) 出土石器

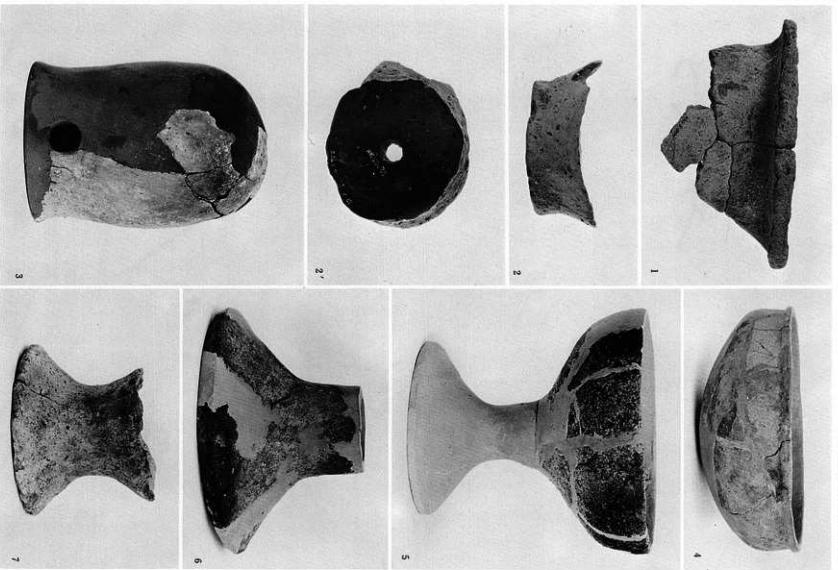


図版二六九 竪穴住居址・溝状遺構・土壇内出土石器および石製品

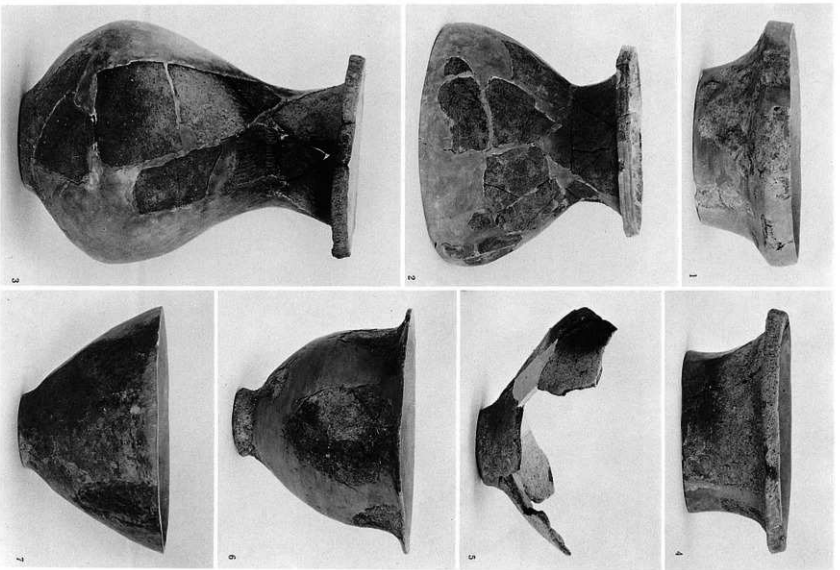
図版二六九 竪穴住居址・溝状遺構・土壇内出土石器および石製品



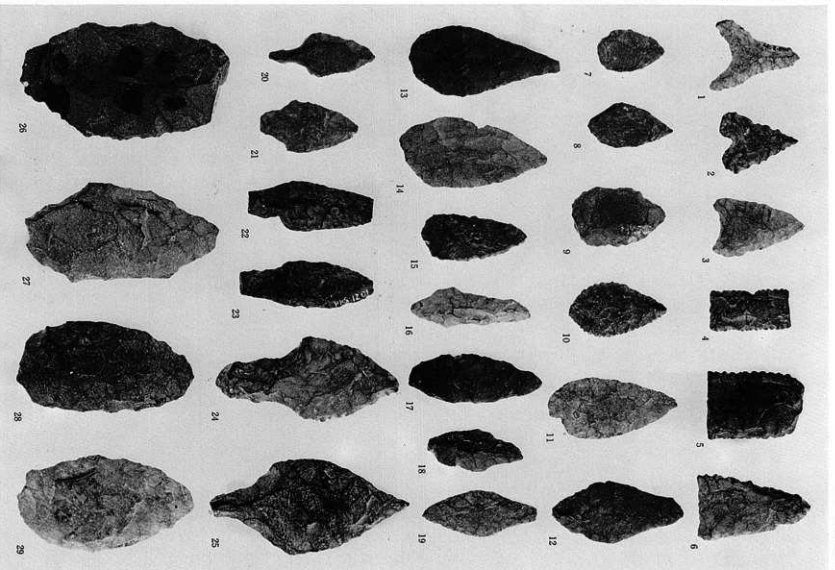
図版二七〇 竪穴住居址・溝・土壇・方形周溝墓内出土石器および石製品



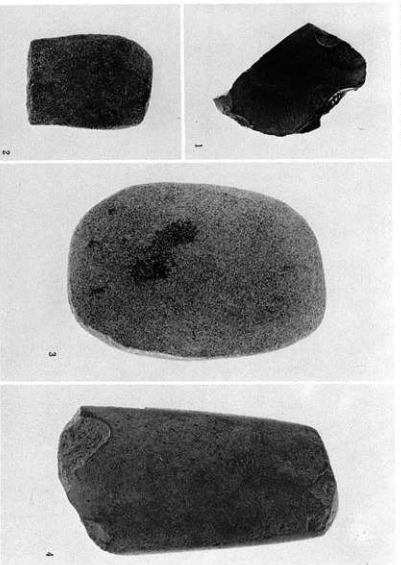
図版一七〇 菱木下遺跡第Ⅱ・第Ⅲ調査区出土弥生時代・土器



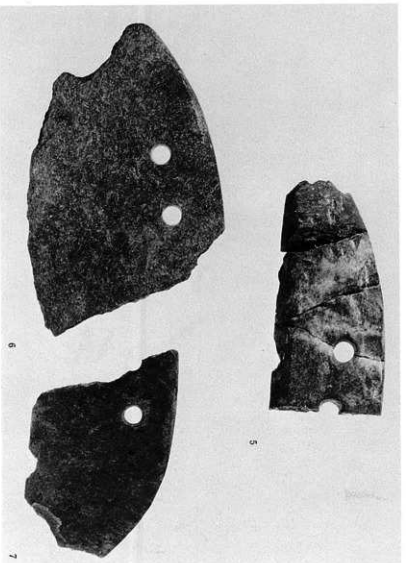
図版一七一 弥生時代・土器

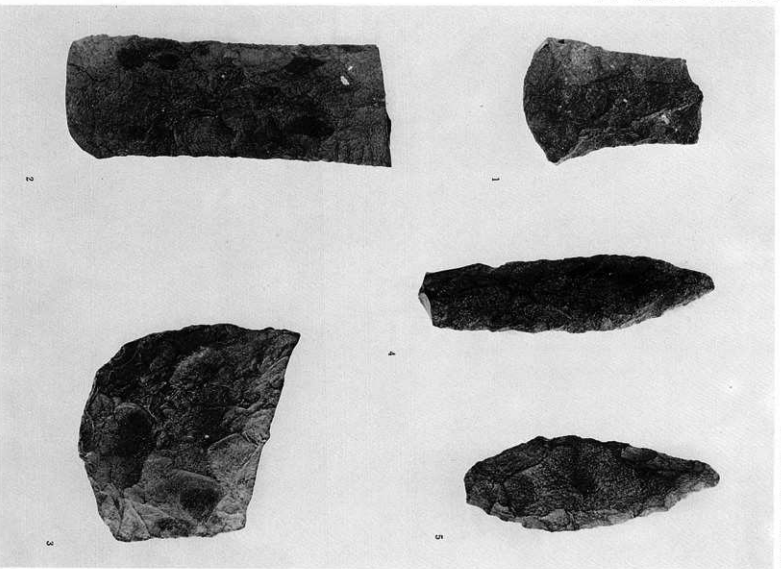


図版一七二 縄文時代・弥生時代・石器

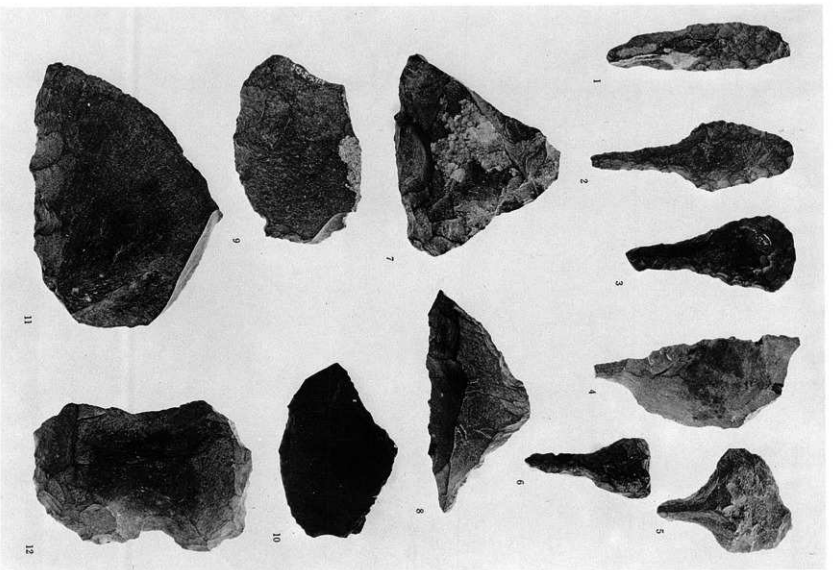


圖版一七三 弥生時代・石器

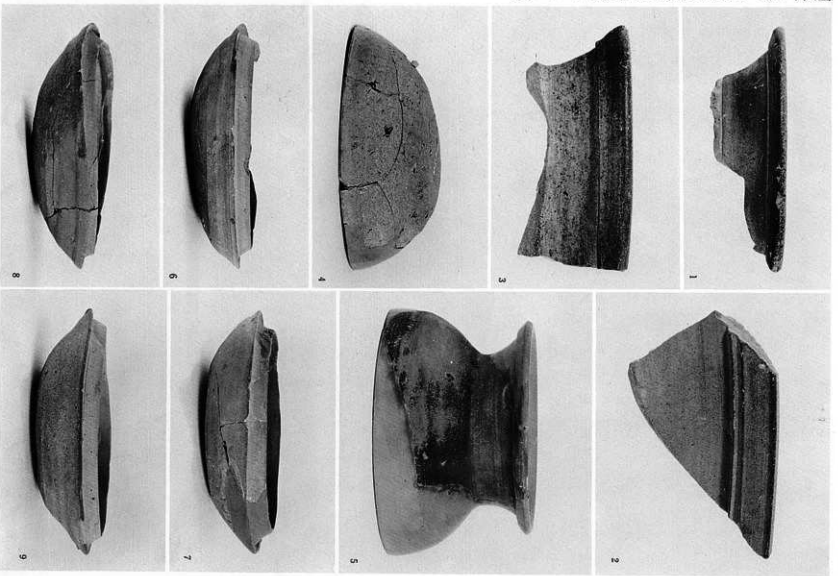




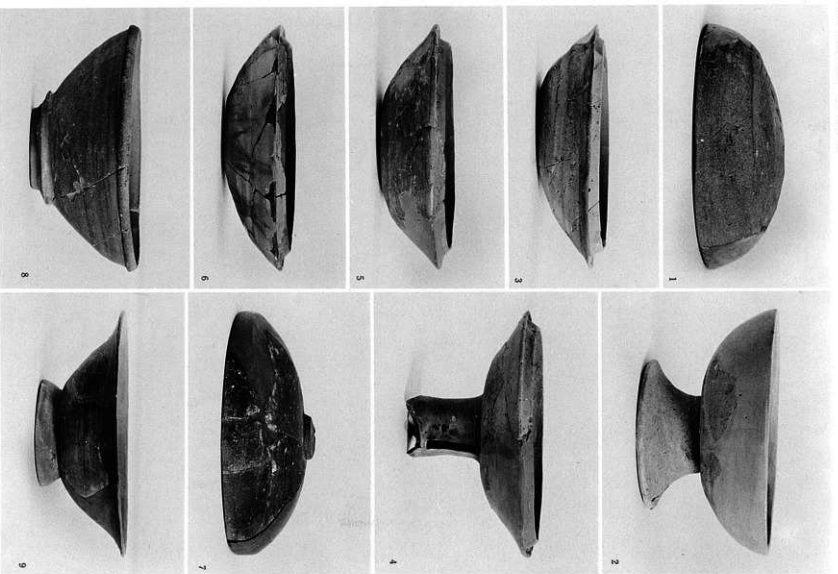
图版一七四 券生时代·石器



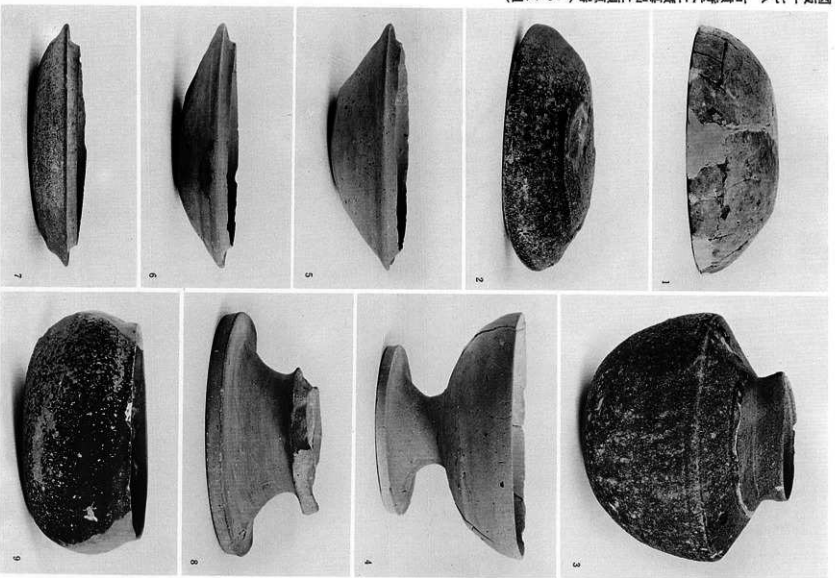
図版一七五 弥生時代・石器



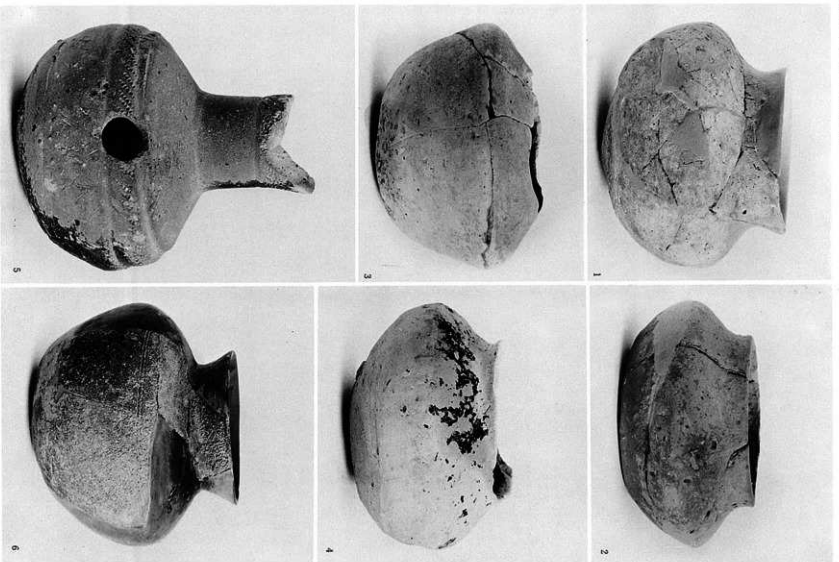
図版一七六 古墳時代遺構出土須恵器 (S K A 32)



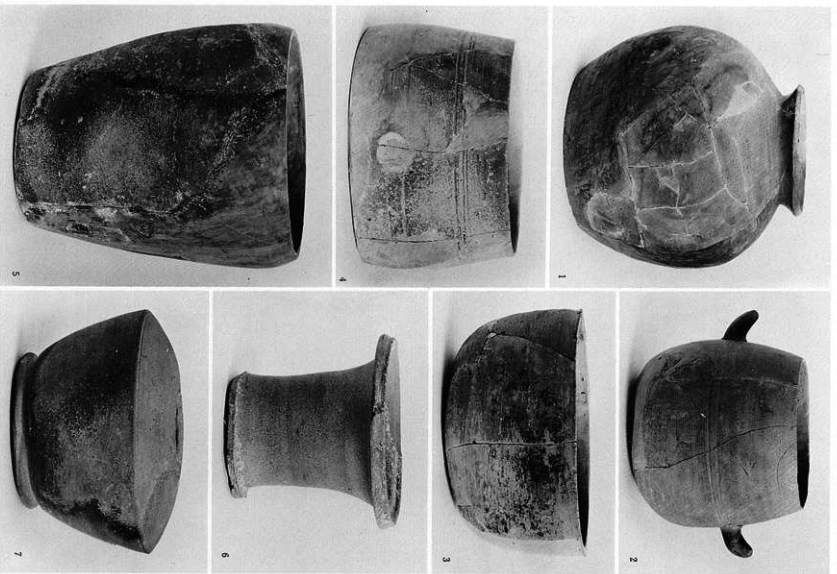
図版一七七 古墳時代大落5込方・土壇出土須惠器



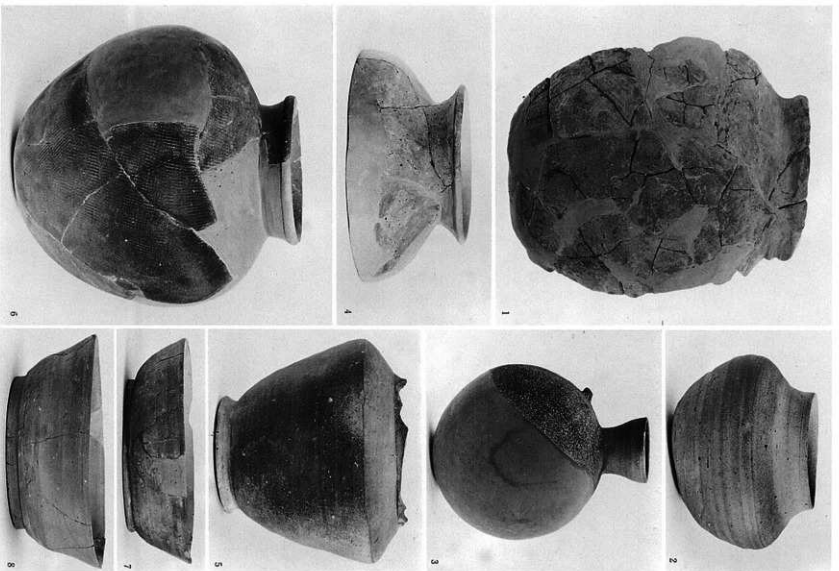
図版一七八 古墳時代土壇墓出土須恵器(STKⅢ)



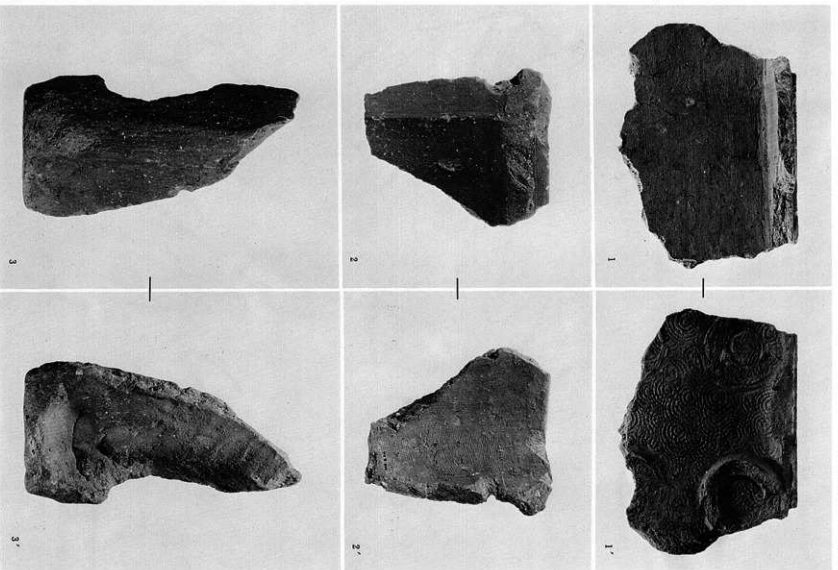
図版一七九 古墳時代土壺墓出土須恵器

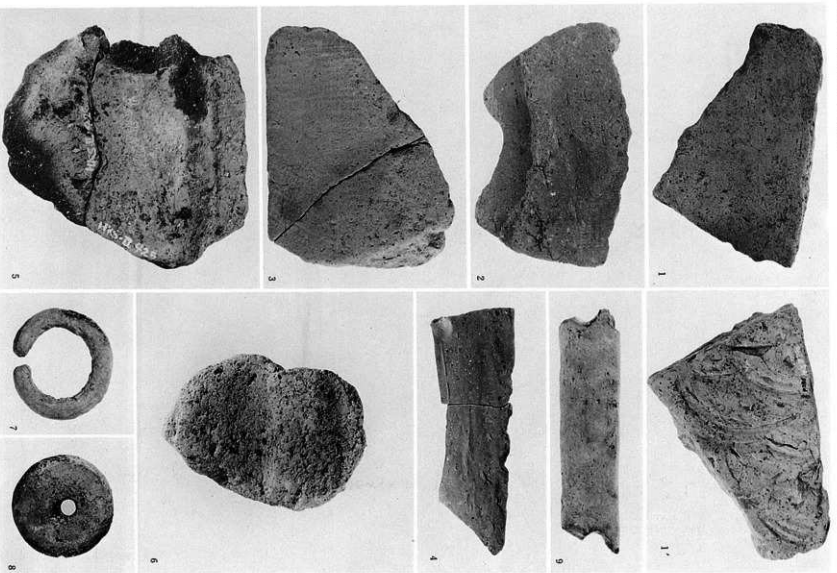


図版一八〇 古墳時代土坑墓出土須恵器

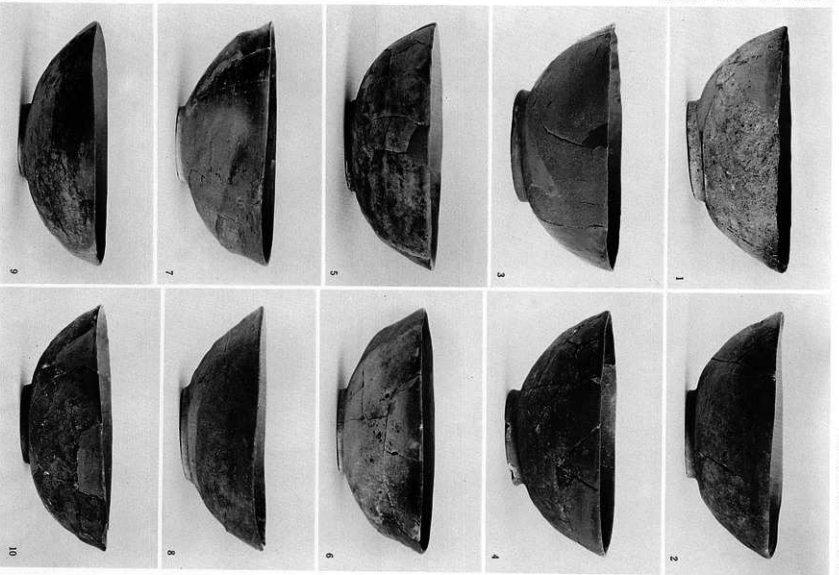


図版一八一 古墳時代土壇墓出土須恵器





図版一八三 古墳時代・陶棺・埴輪・金環・紡錘車・土鍾



图版一八四 中世·瓦器坑



1



2



3



4



5



6



7



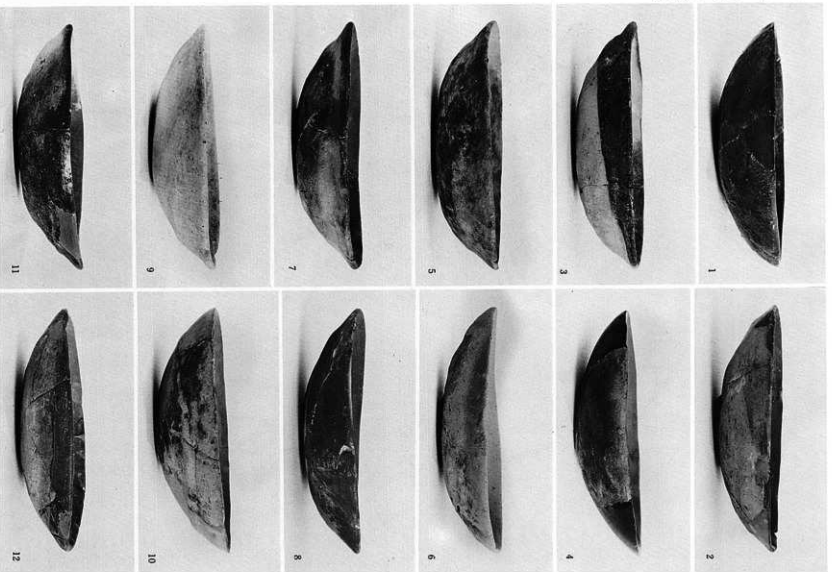
8

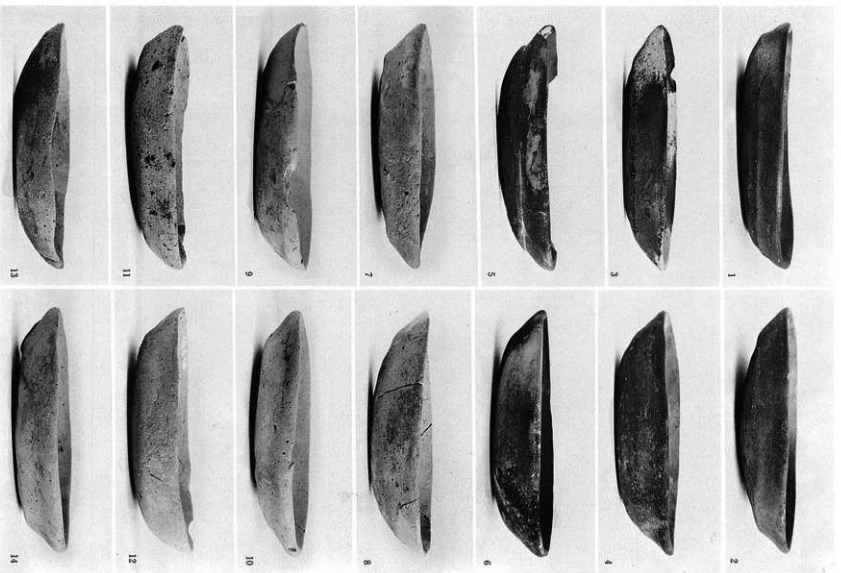


9

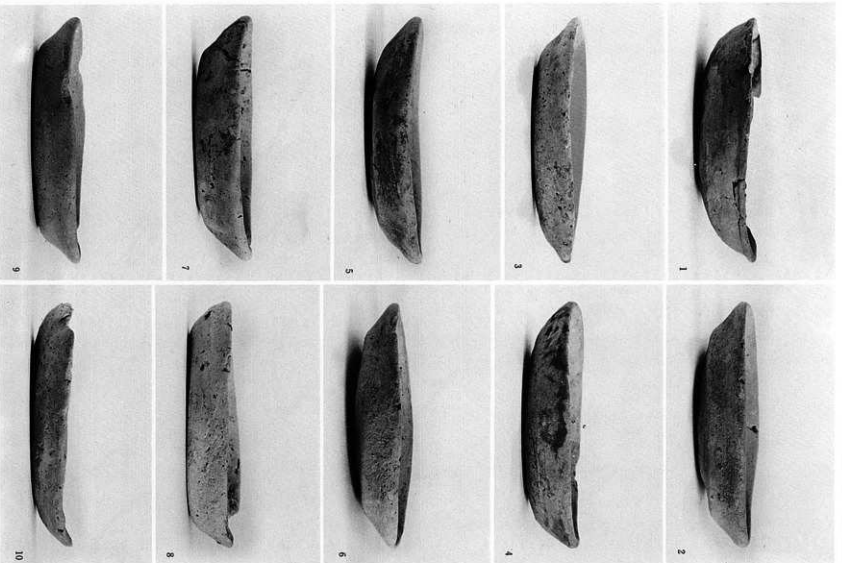


10

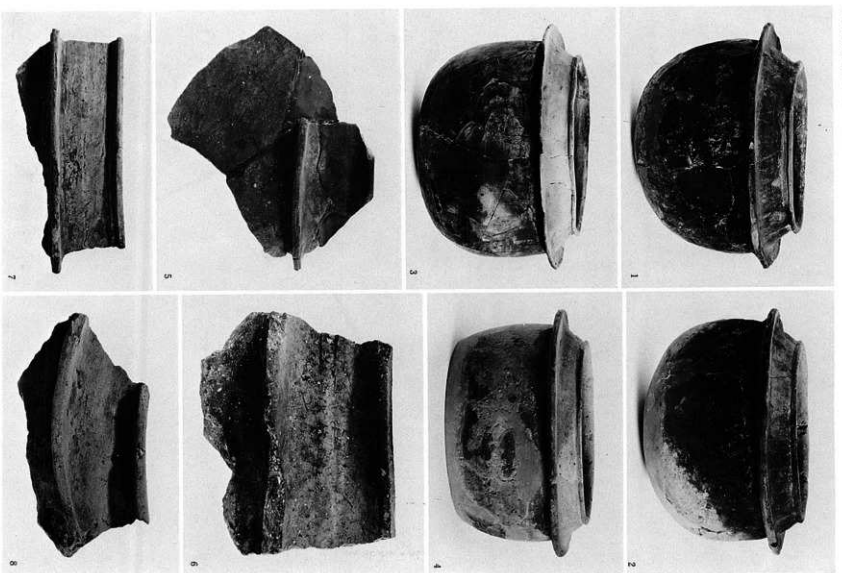




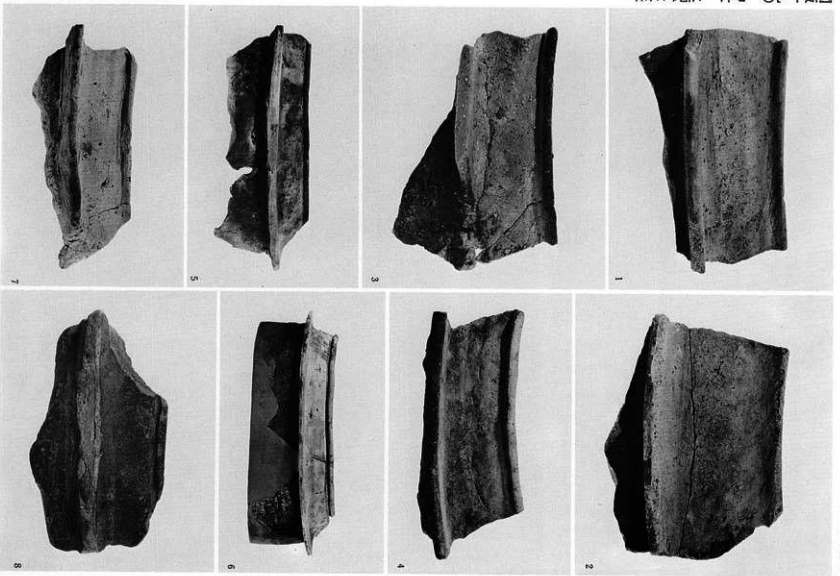
図版一八七 中世・瓦器小皿・土師器小皿



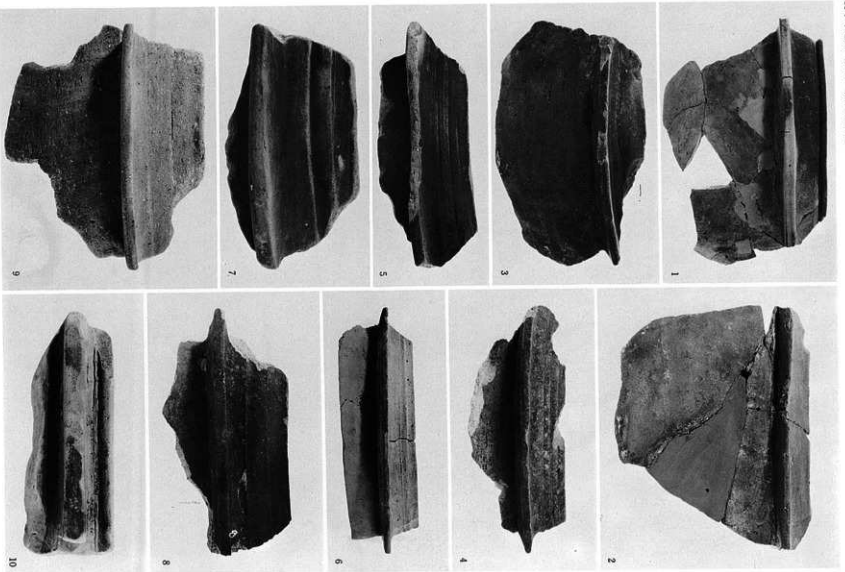
图版一八八 中世·土師器小皿



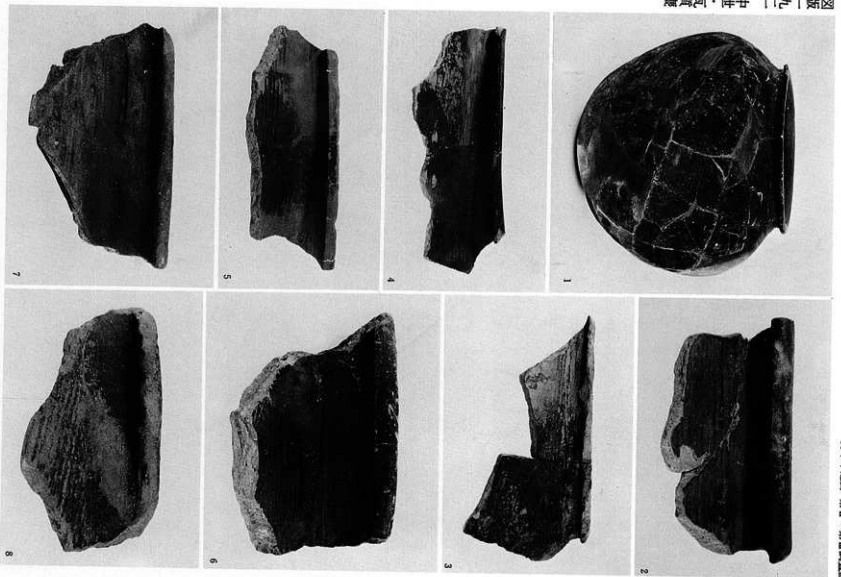
图版一八九 中世·土御簀土釜

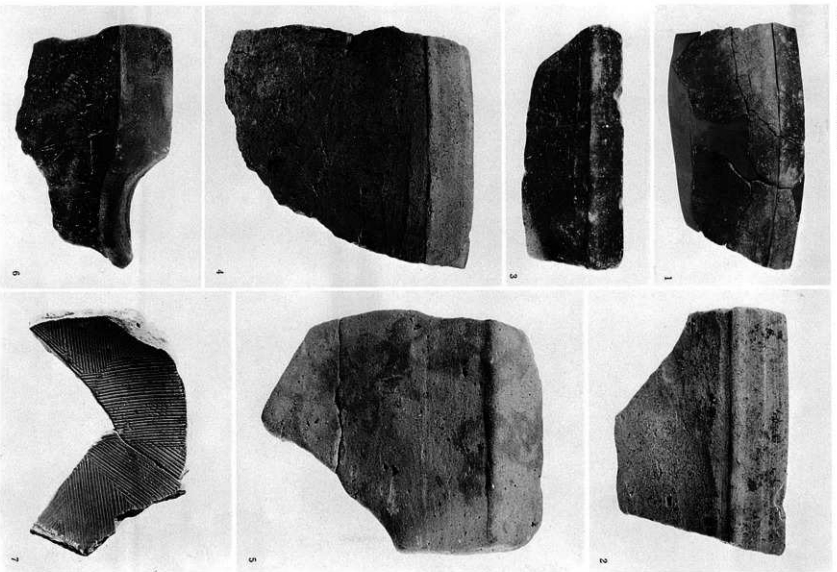


図版一九〇 中世・土師質土釜

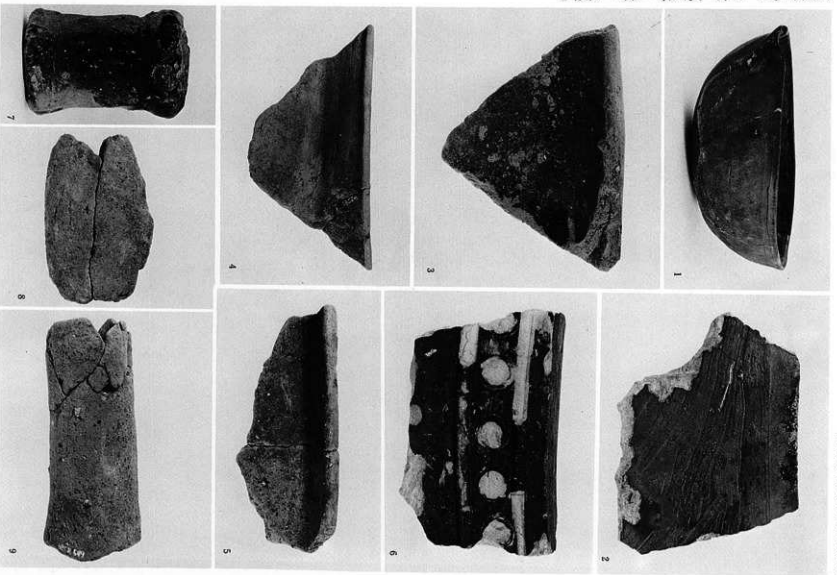


圖版一九一 中世・瓦質土釜

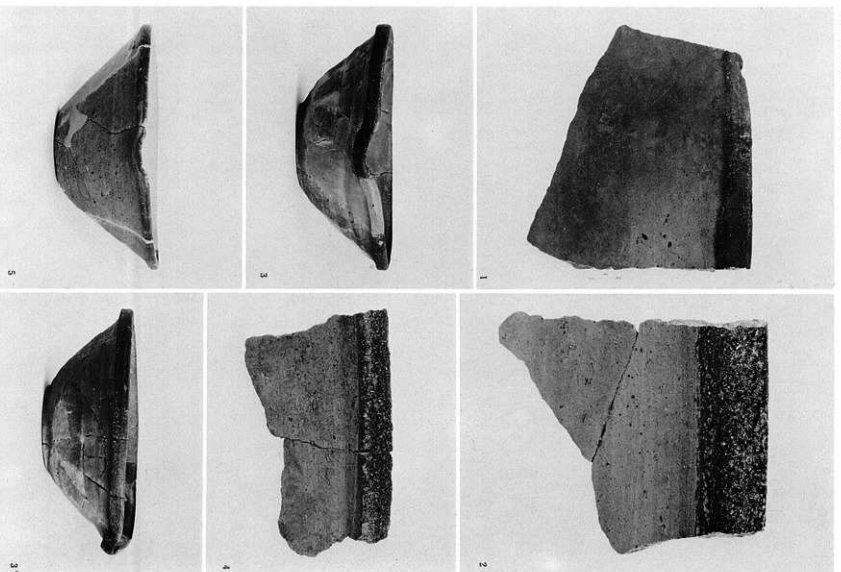




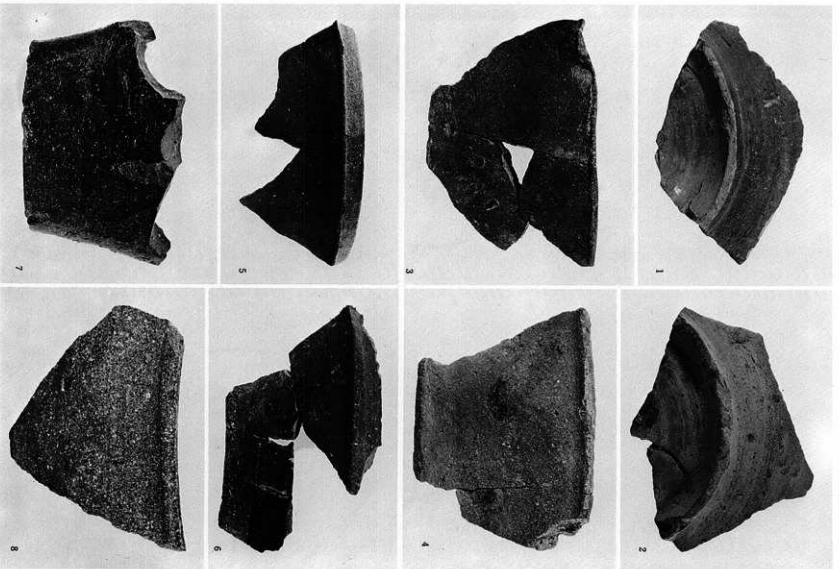
図版一九三 中世・瓦質すり鉢

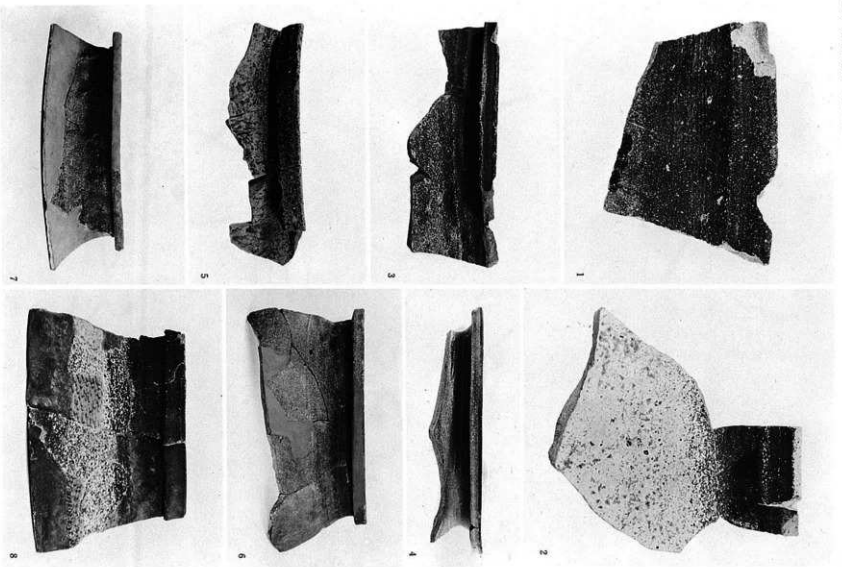


図版一九四 中世・瓦質鉢・火舎・土製品

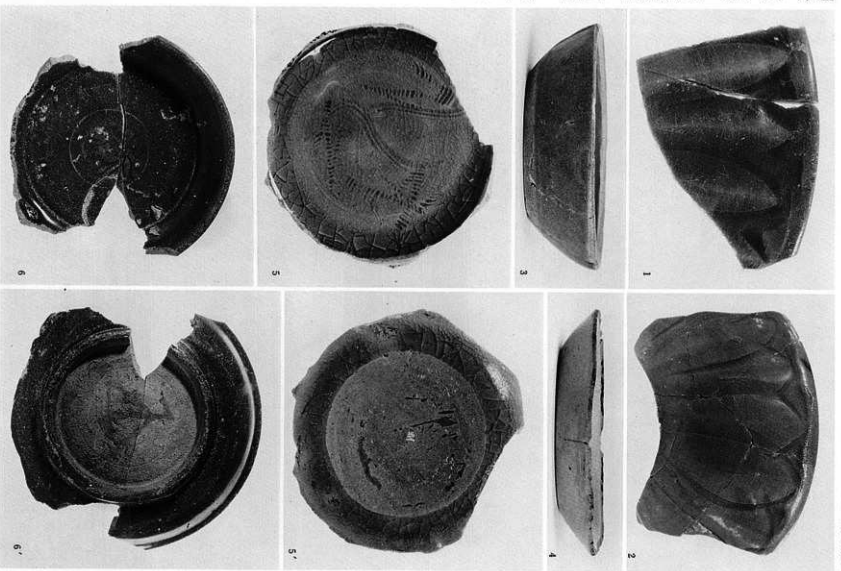


図版一九五 中世・須恵貫ねり鉢（東播系）

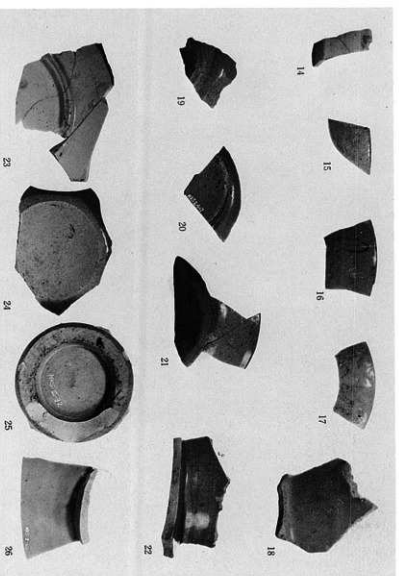
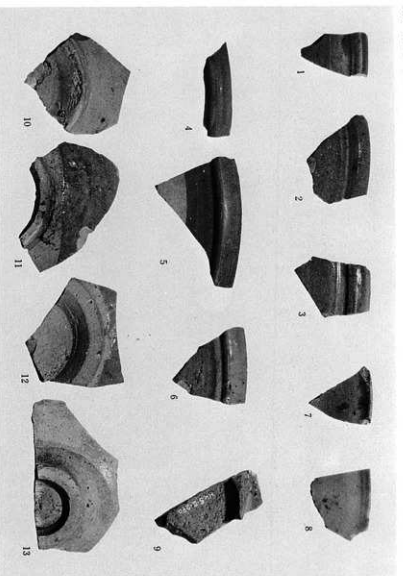


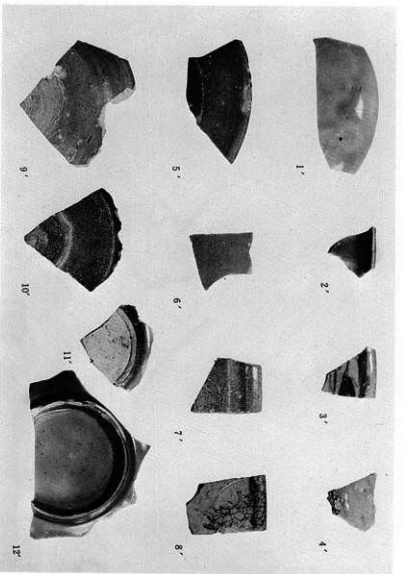
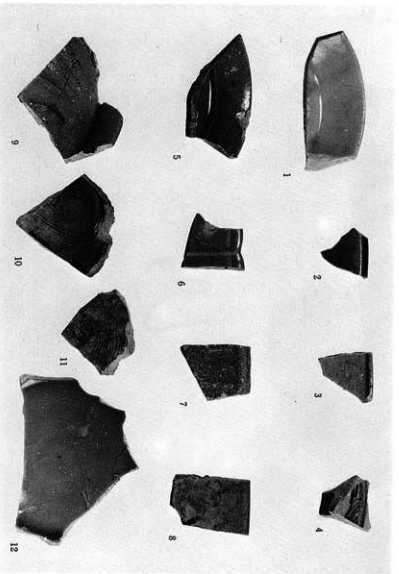


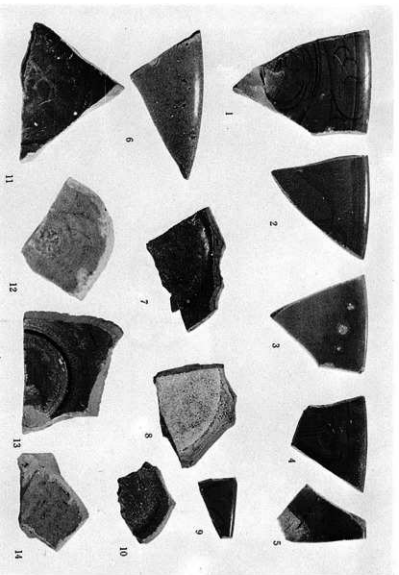
図版一九七 中世・日本製陶器(常滑)



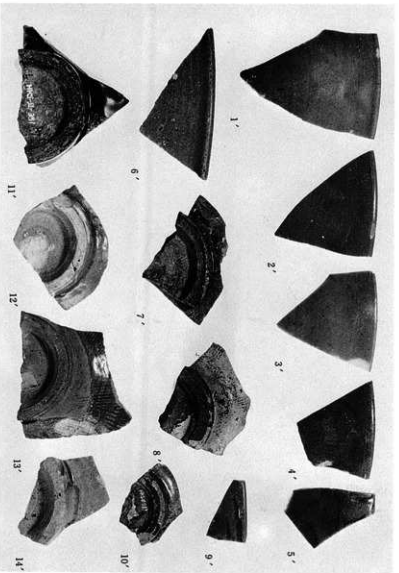
圖版一九八 中世・中國製陶磁器・青磁碗・白磁碗・青磁皿

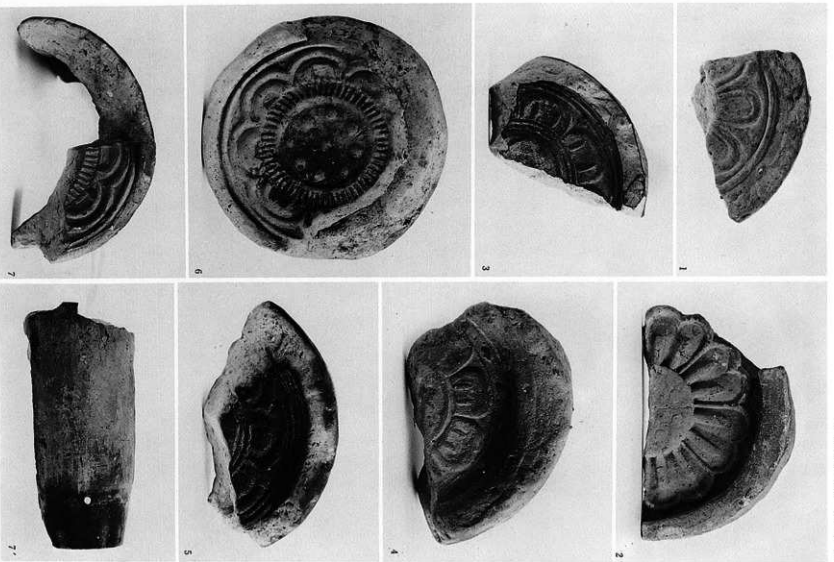


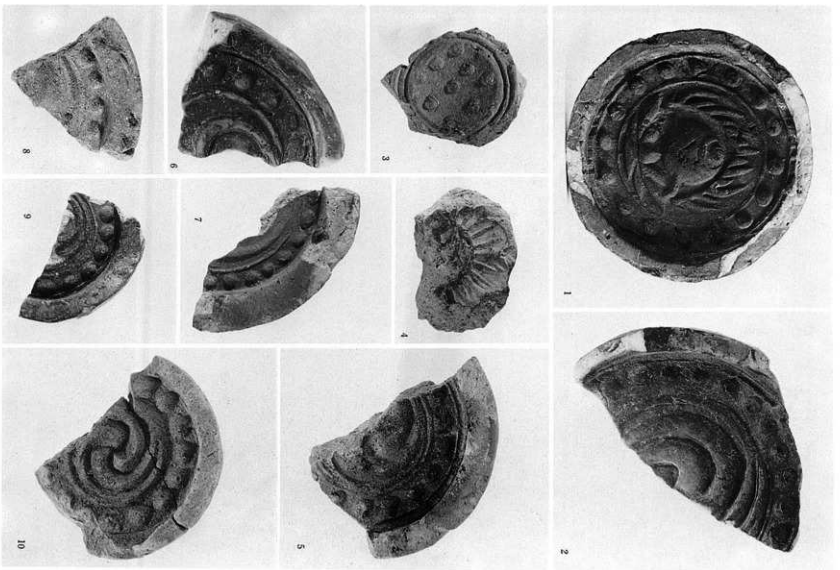




图版二〇一 中世·中国製陶磁器·青磁碗







图版一〇三 中世·軒瓦



1



2



3



5



4



6



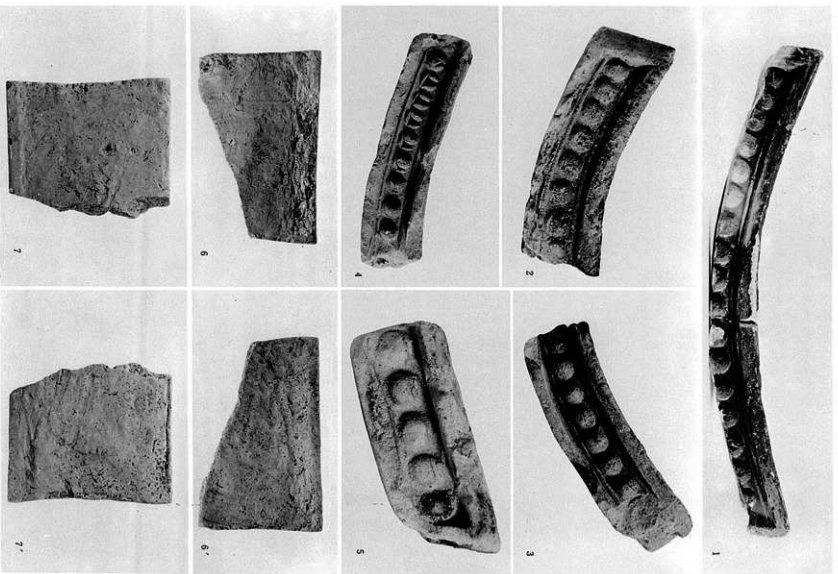
7



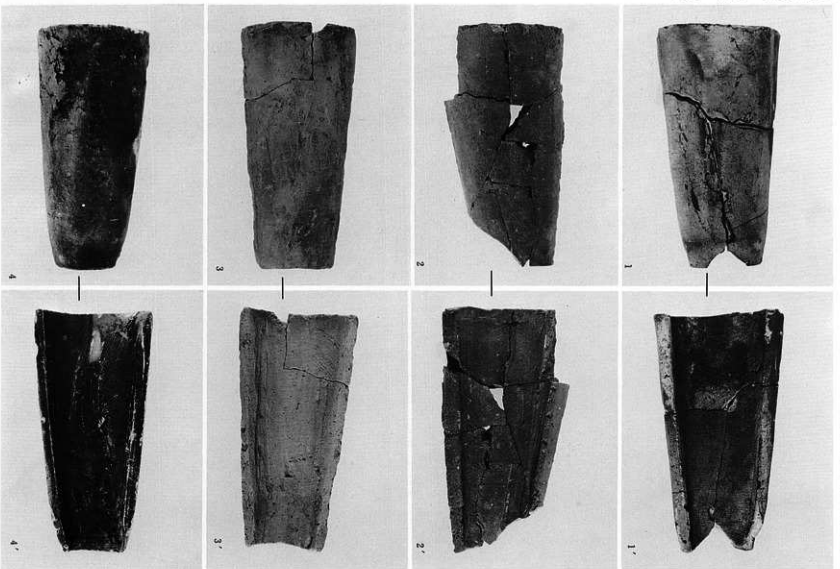
8

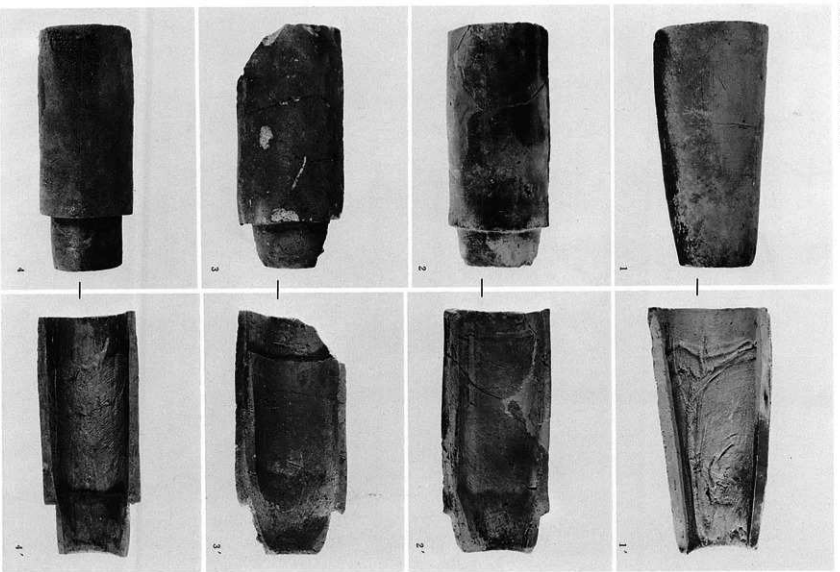


9

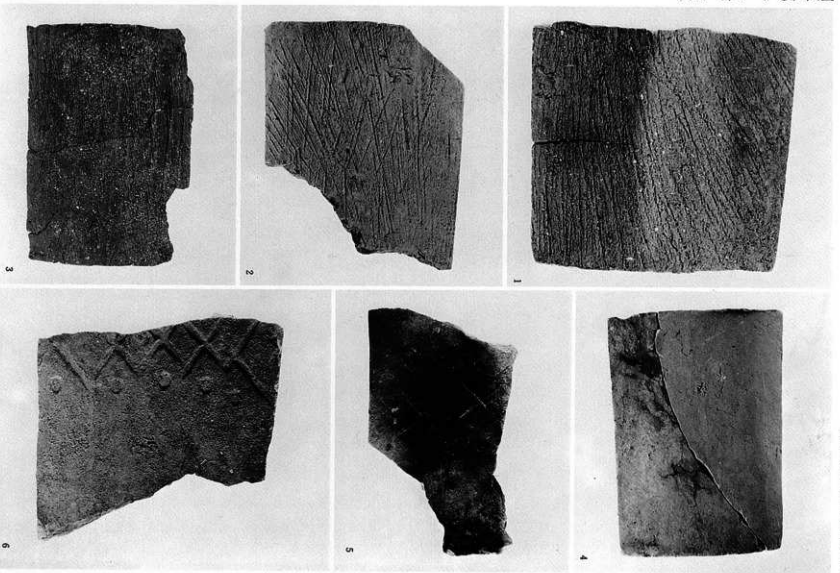


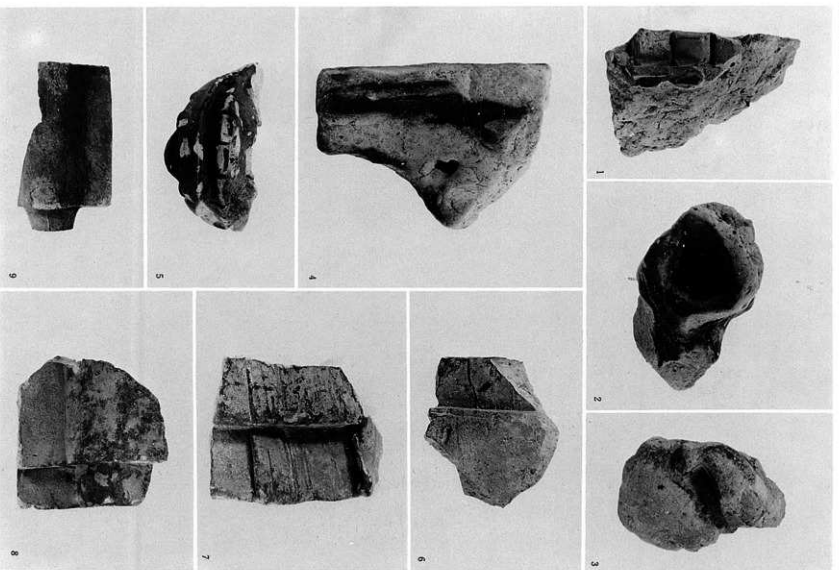
図版二〇五 中世・軒平瓦・板状土製品



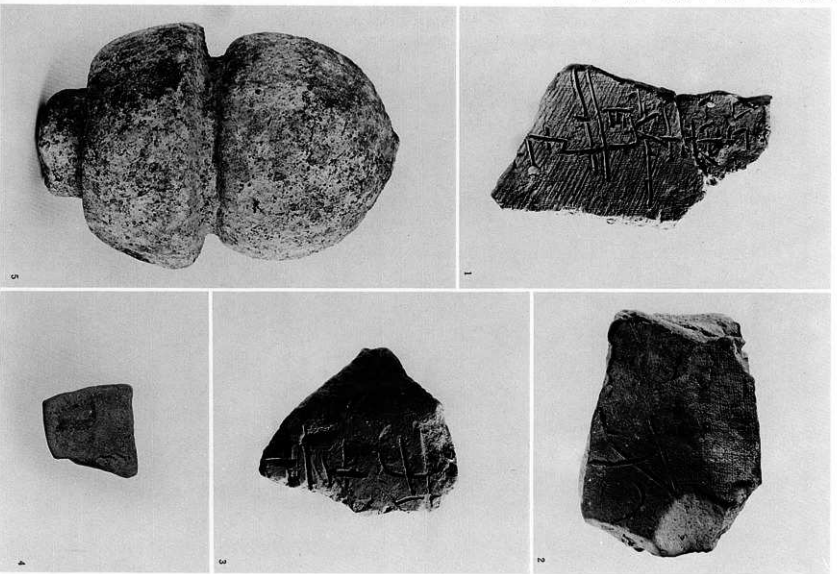


図版二〇七 中世・丸瓦

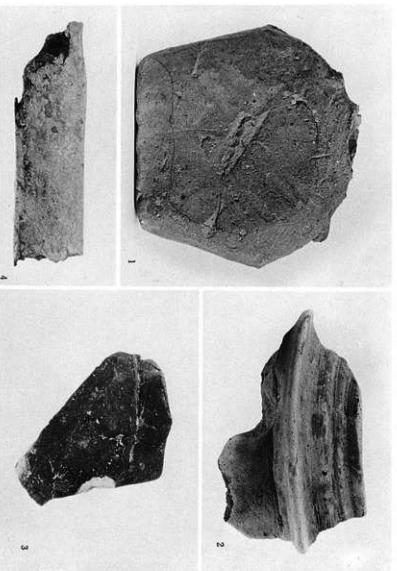




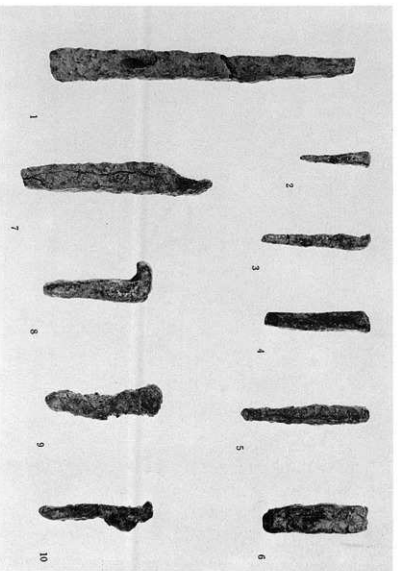
図版二〇九 中世・鬼瓦・道具瓦



图版二〇 中世·文字瓦·墨香土器·五輪塔



図版二一 中世、ニチユツ土器・小柄・鉄製品





1



1'



1''



2



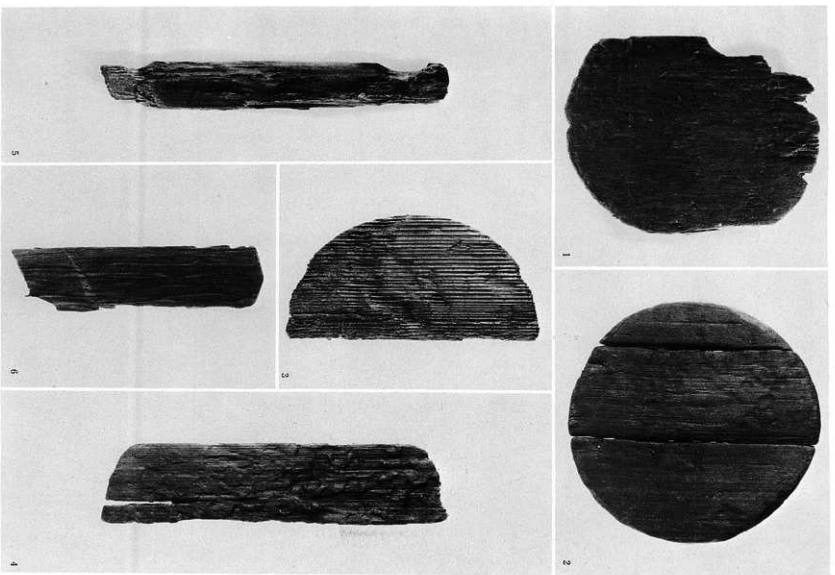
3



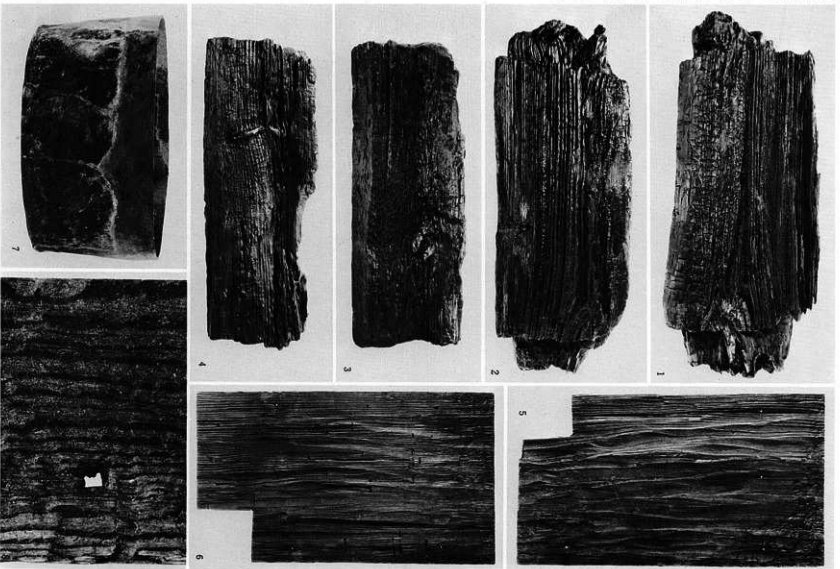
4



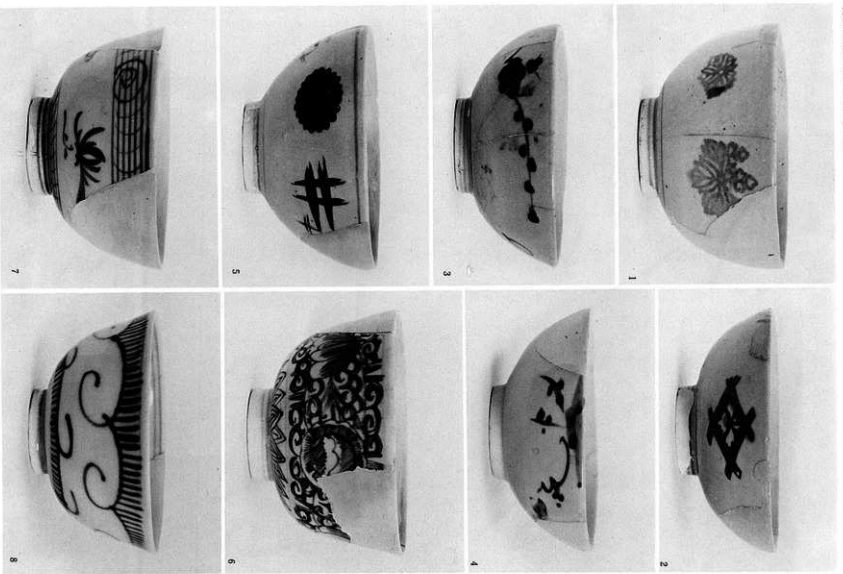
4'

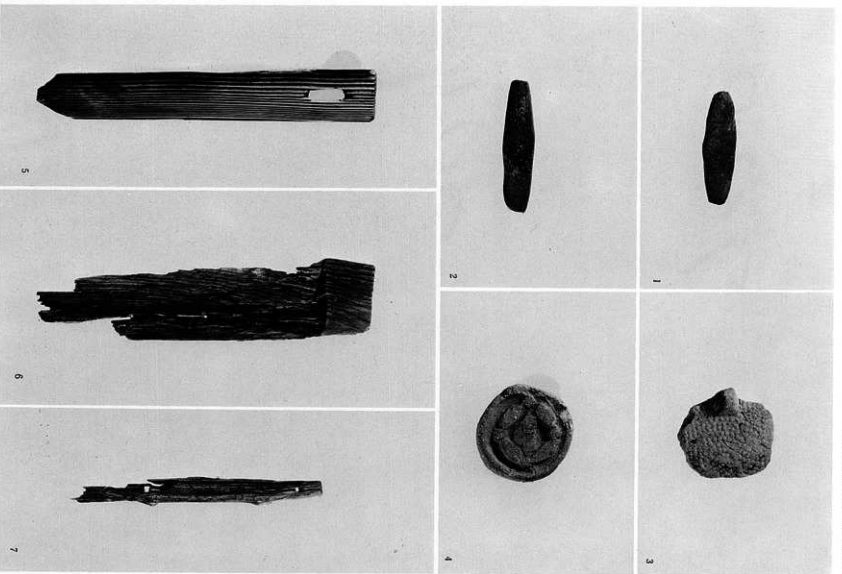


図版二一三 中世・木製品・曲物底・斉串・用途不明品



図版二四 中世・木製井戸枠・瓦質井戸枠





図版二六 近世・土鍾・ミチユア土器・泥面子・木製品



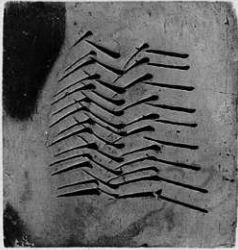
1



2



3



4

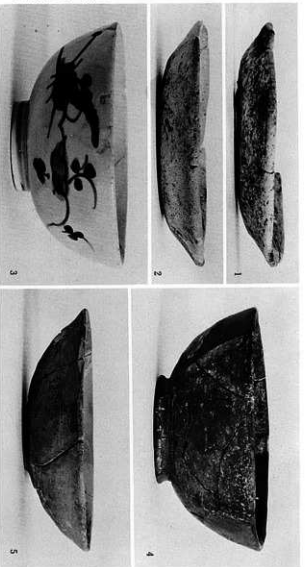


5

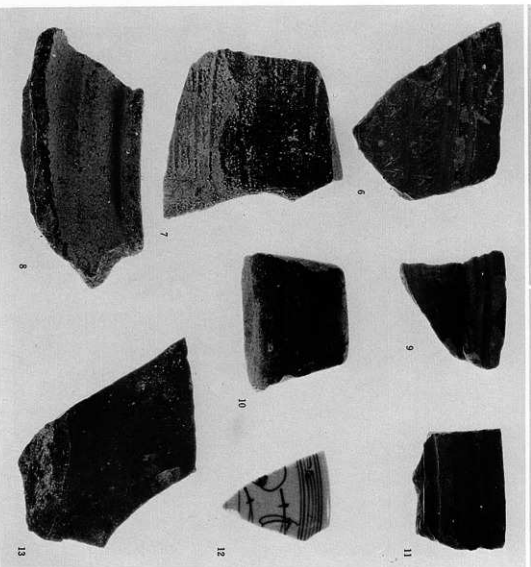


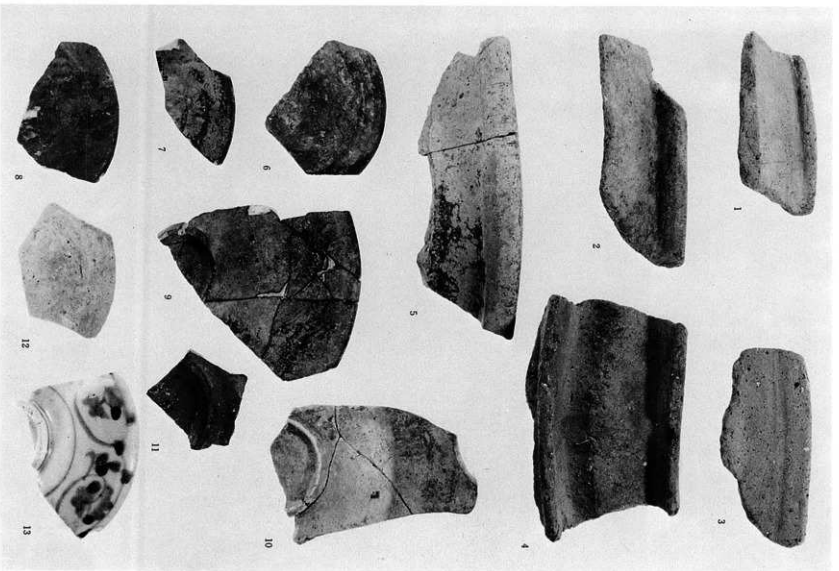
6

図版二七 近世・瓦質火鉢・近代井戸埴瓦

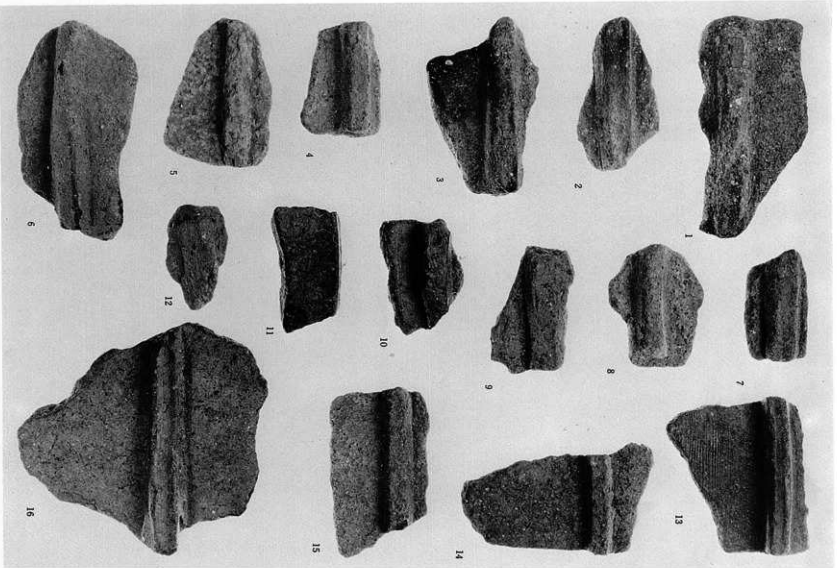


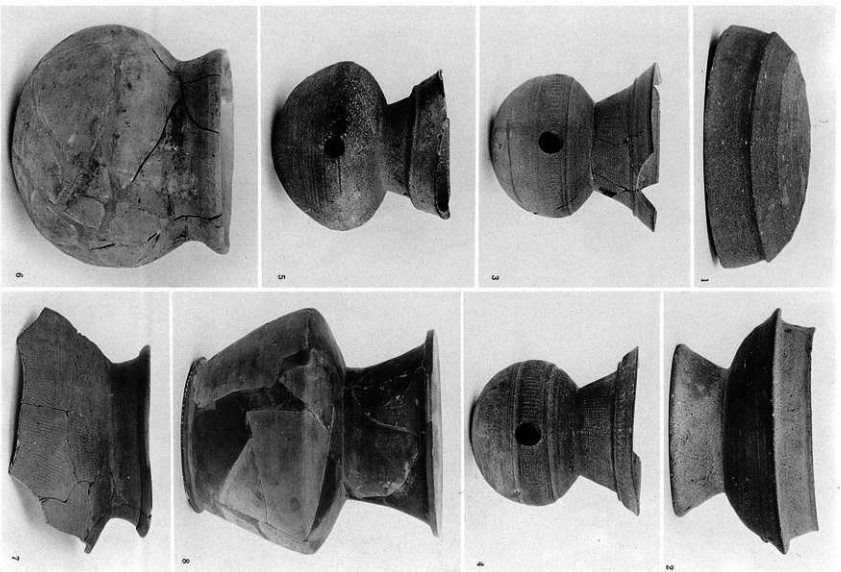
图版二八 万峰池墓葬第1调查区出土遗物



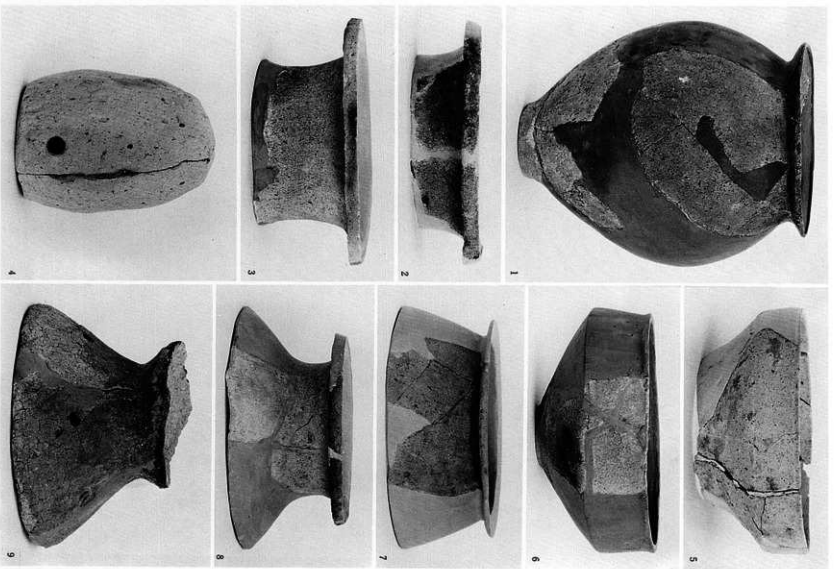


图版二九 出土遗物

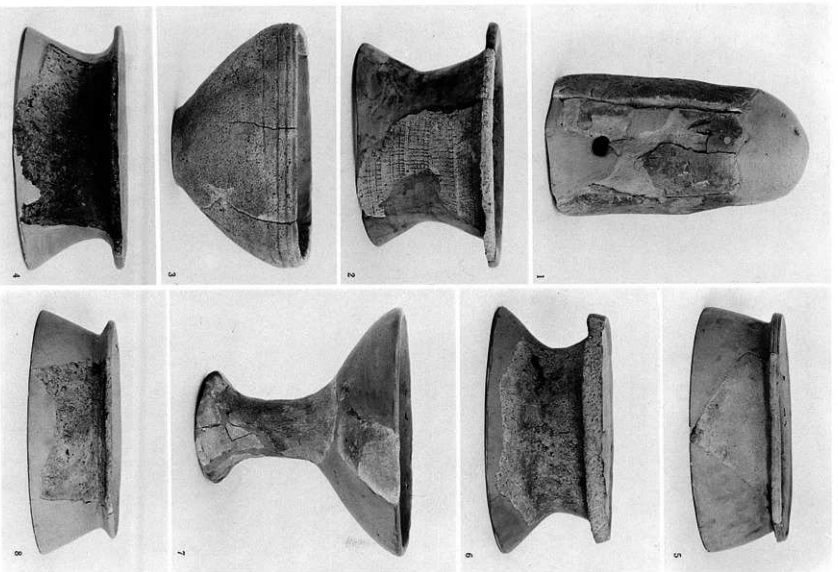


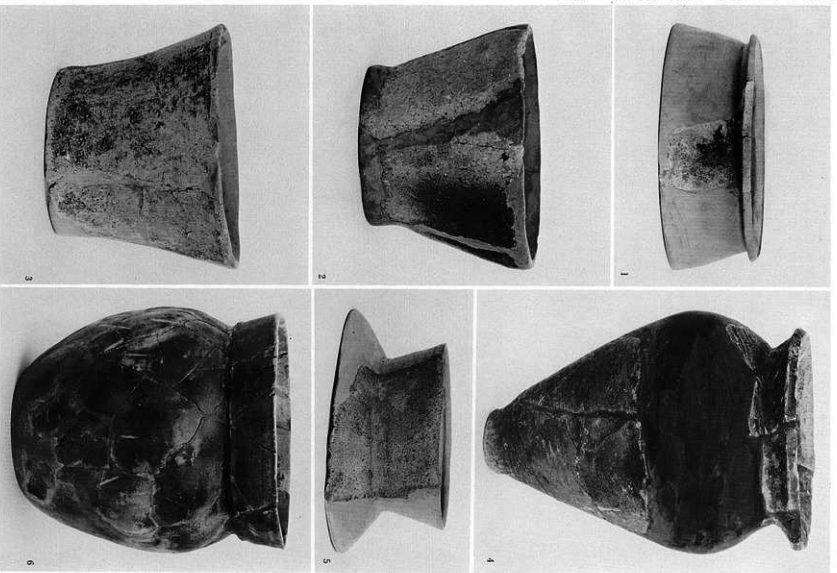


図版三二 万崎池遺跡第Ⅱ調査区出土遺物

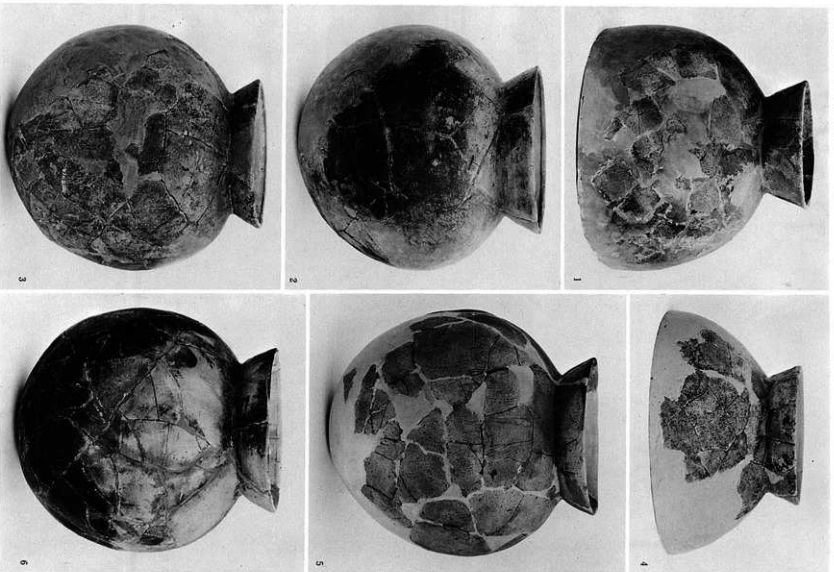


图版三三西·东侧谷出土弥生式土器

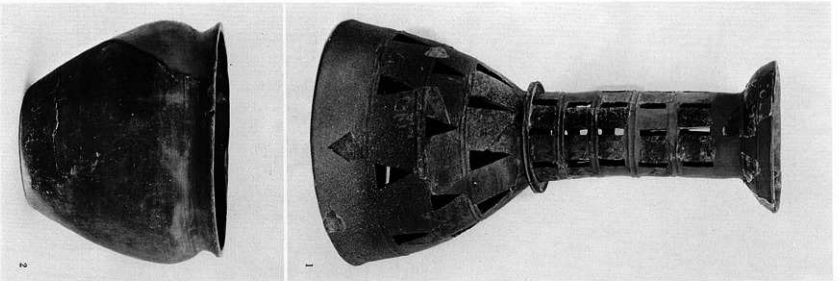
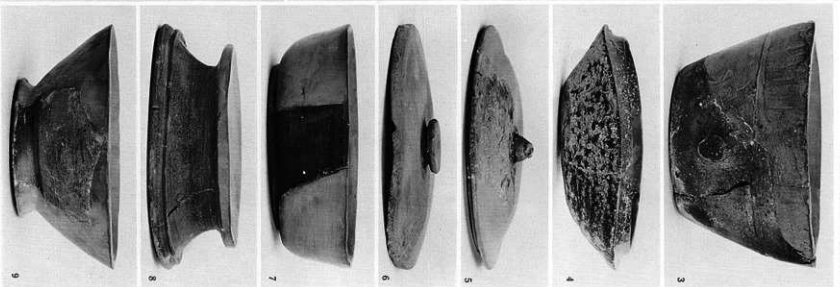




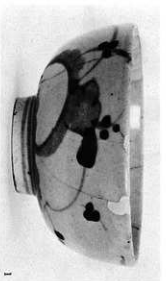
図版二四 東側谷出土弥生式土器・土師器



図版三五 東側谷出土土師器



図版二六 東側谷出土須恵器



1



2



3



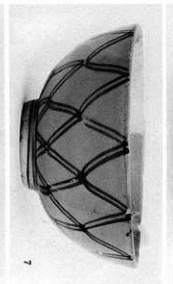
4



5



6



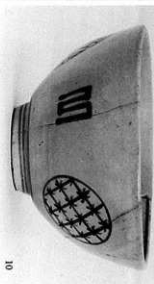
7



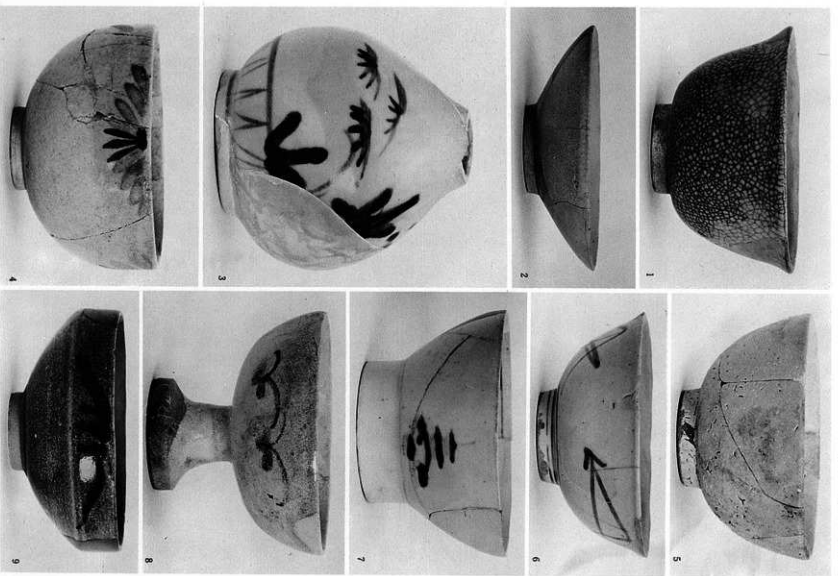
8



9



10





1



2



3



6



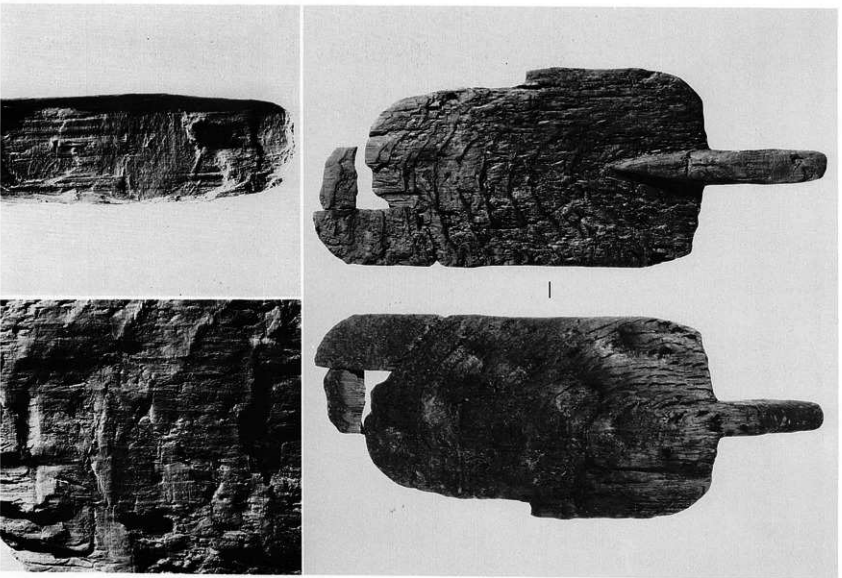
4

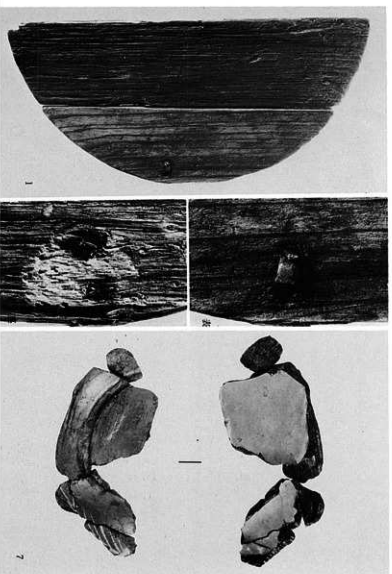


7

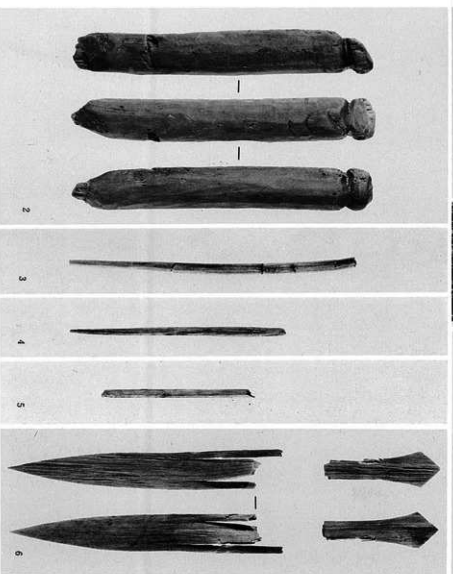


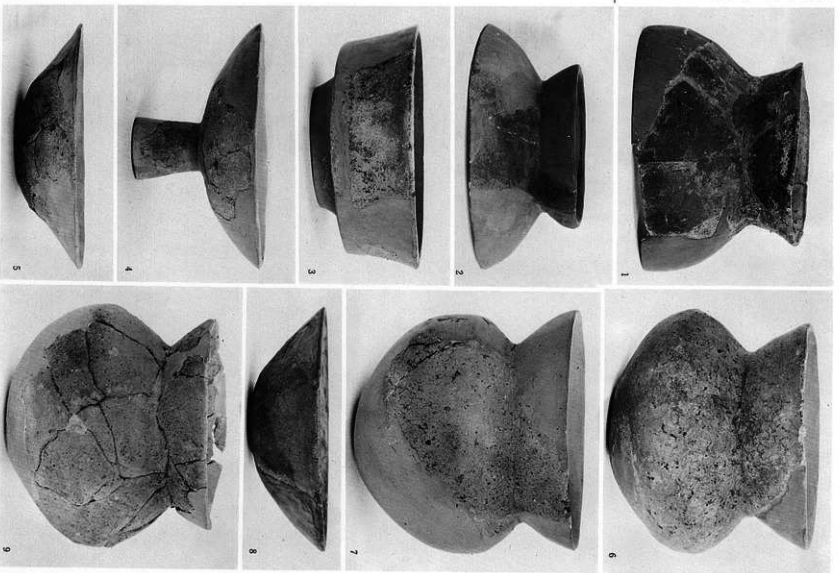
5

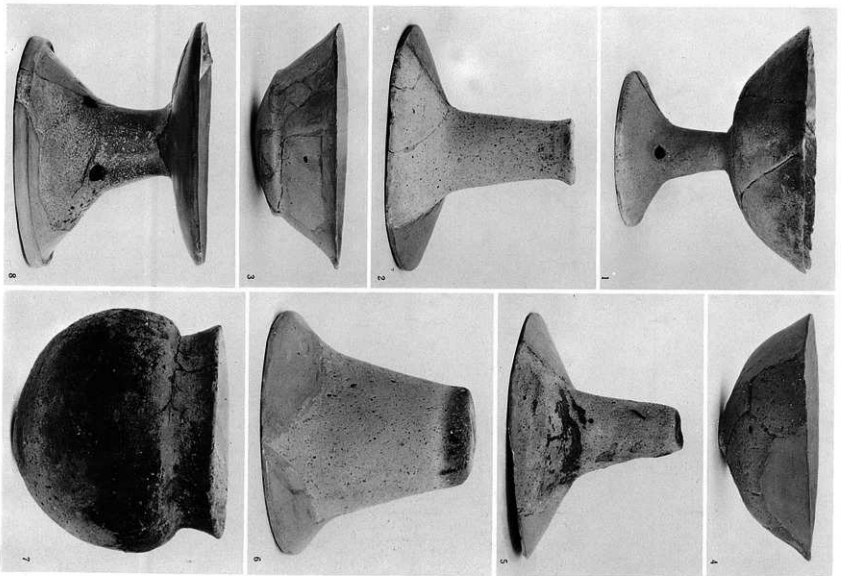


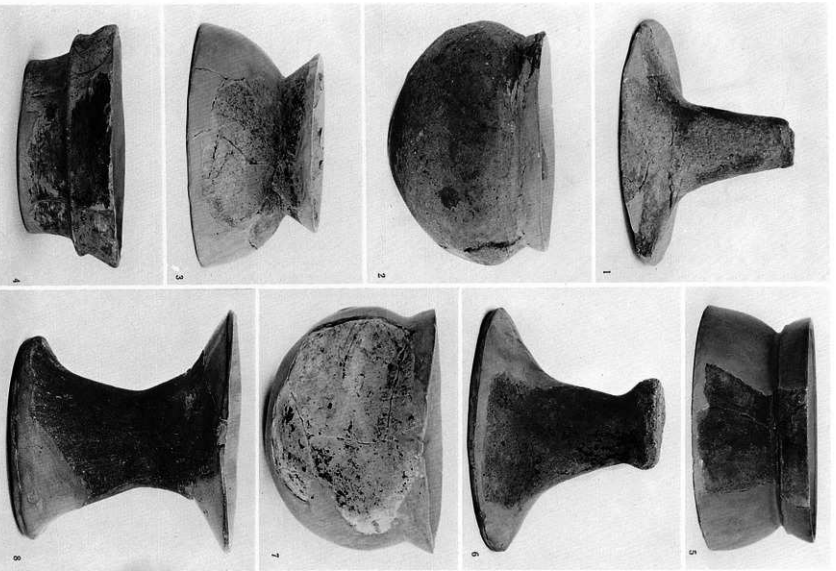


图版三一 各出土木器

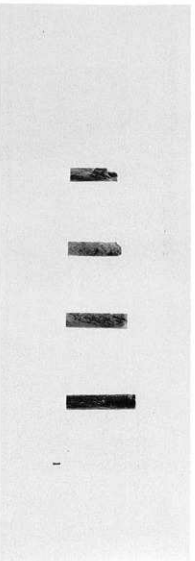






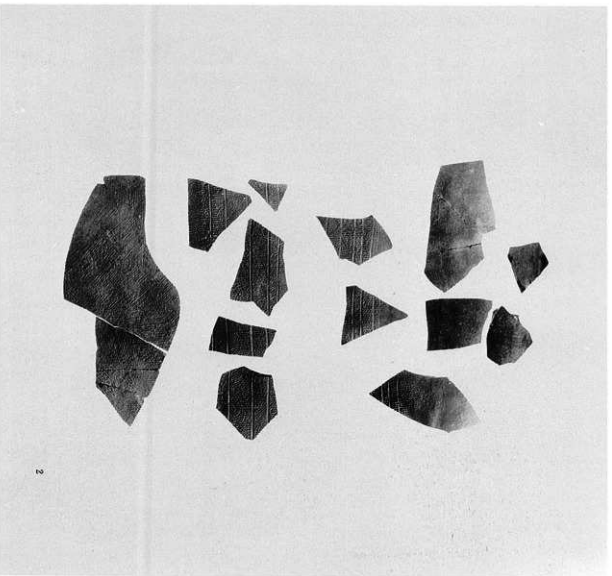


图版三四 古墳時代遺構出土土器

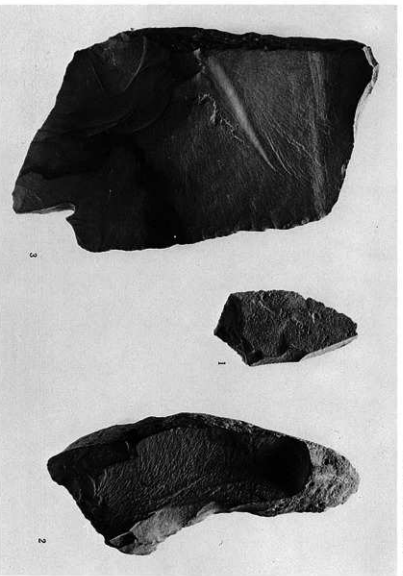


図版三五 古墳時代遺構出土遺物

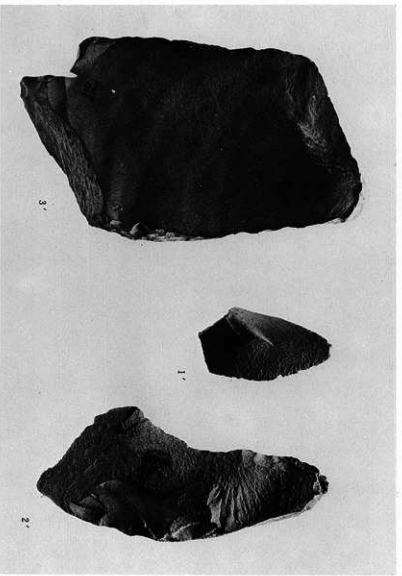
SX1



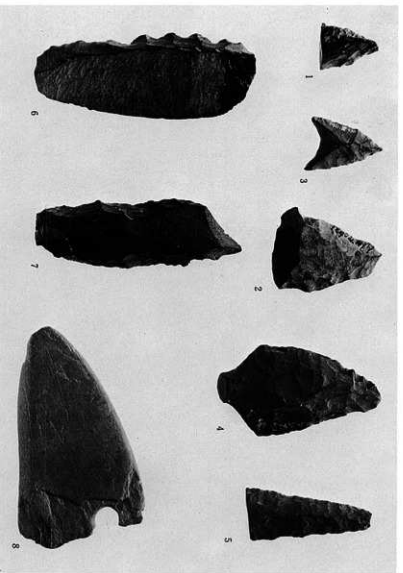
2



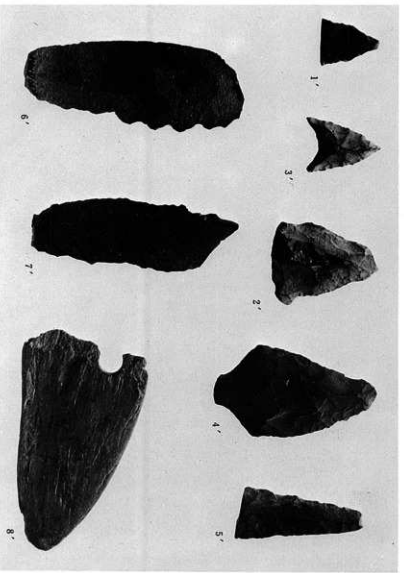
图版三十六 石器



背面

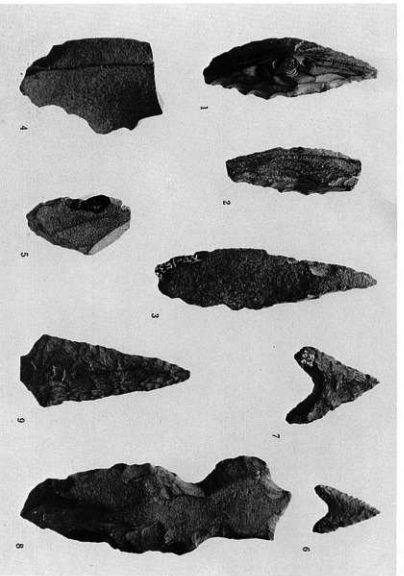


图版三七 石器



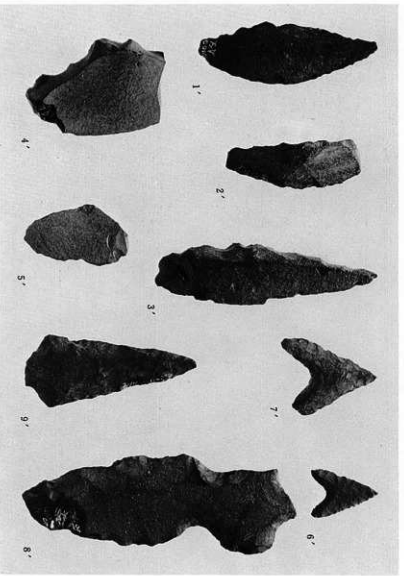
表面

背面



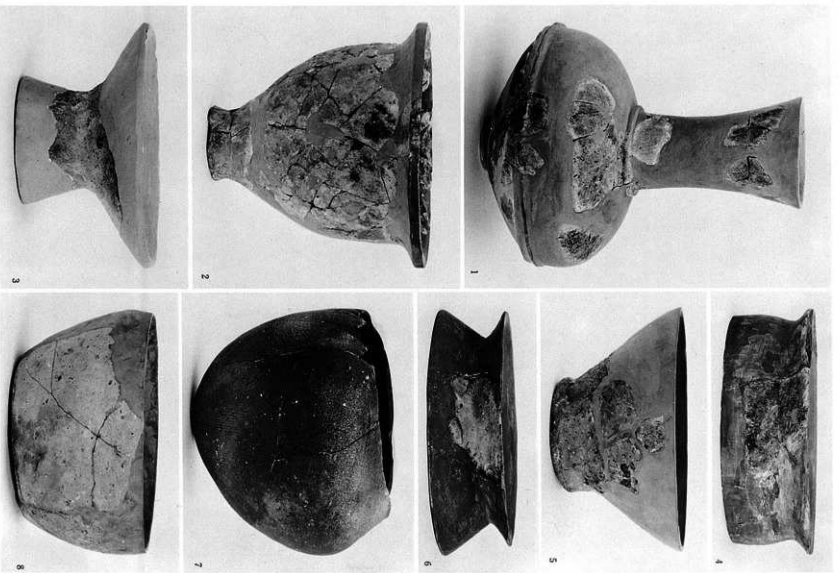
図版三八 万崎池遺跡第Ⅴ調査区出土石器

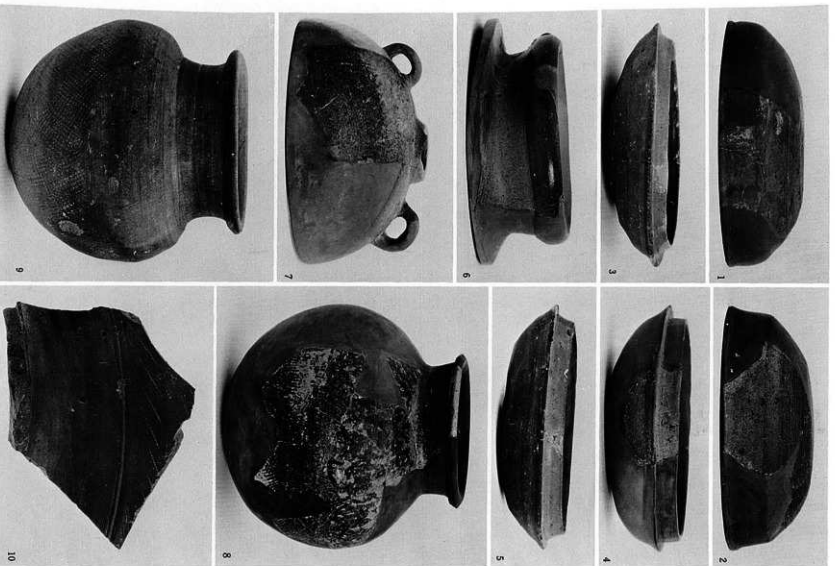
表面

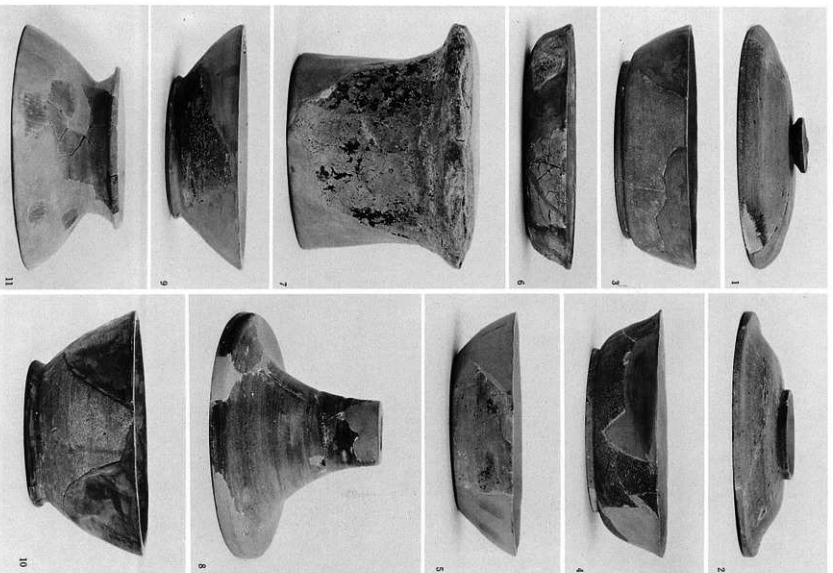


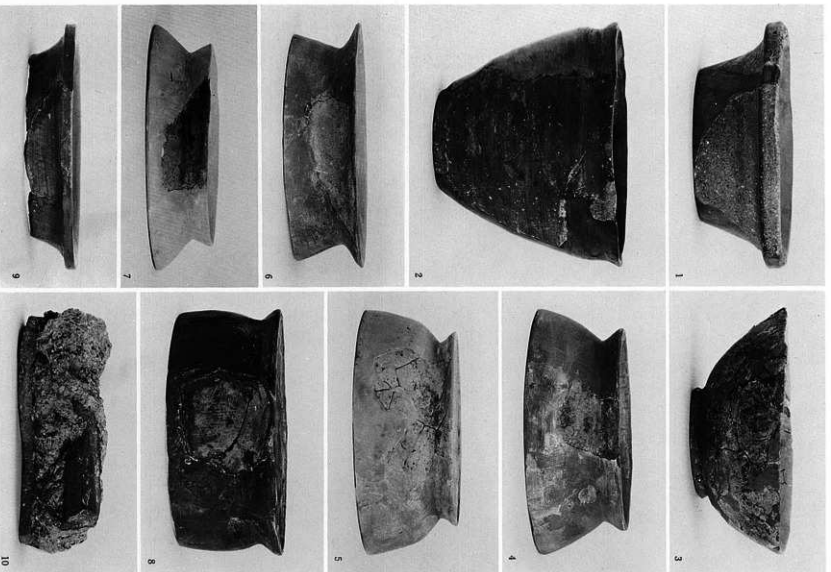
裏面

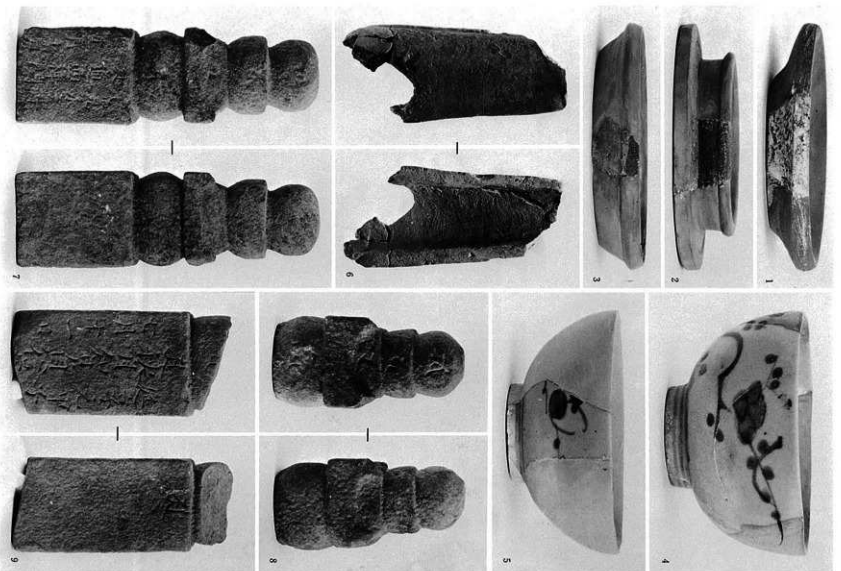
图版三九 弥生·古坟时代遗物

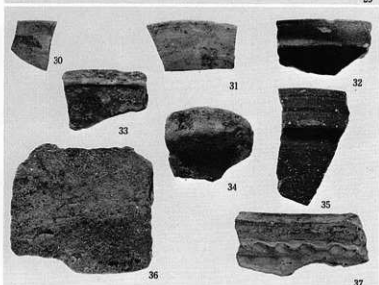
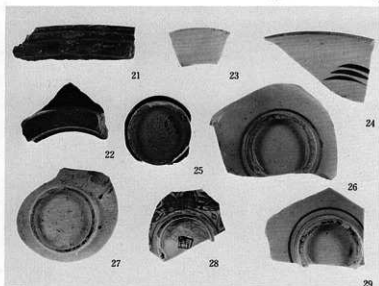
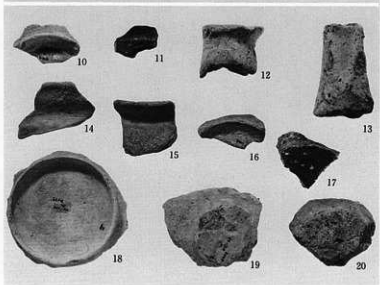
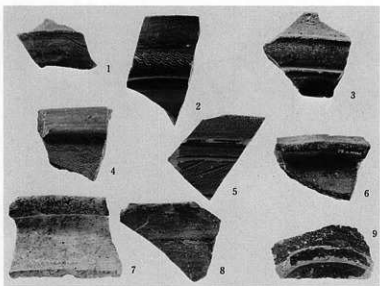


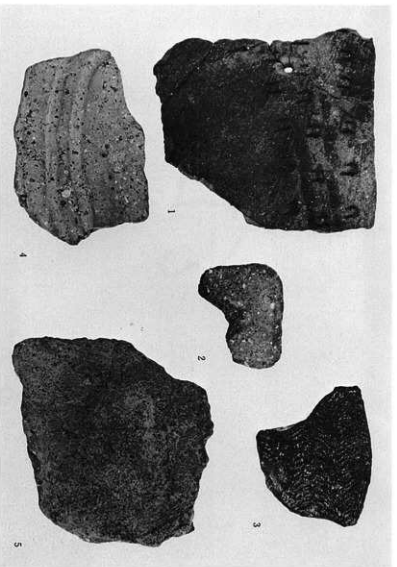




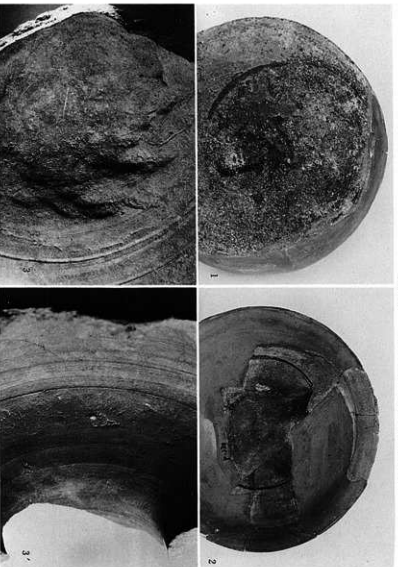




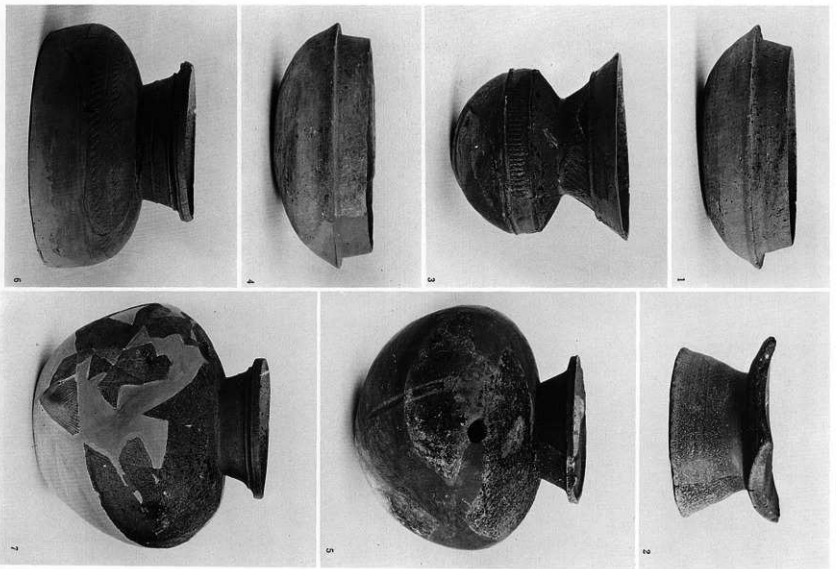




神積段丘面 (2・4) SDN 2 Ⅲ期、(5) 茶黑色粘質土層
沓瀬原 (1・3) 室町時代洪水堆積層



重丸焼き痕 (1・2) 茶黑色粘質土層、成形・調整痕 (3・3') SDN 2 Ⅲ期

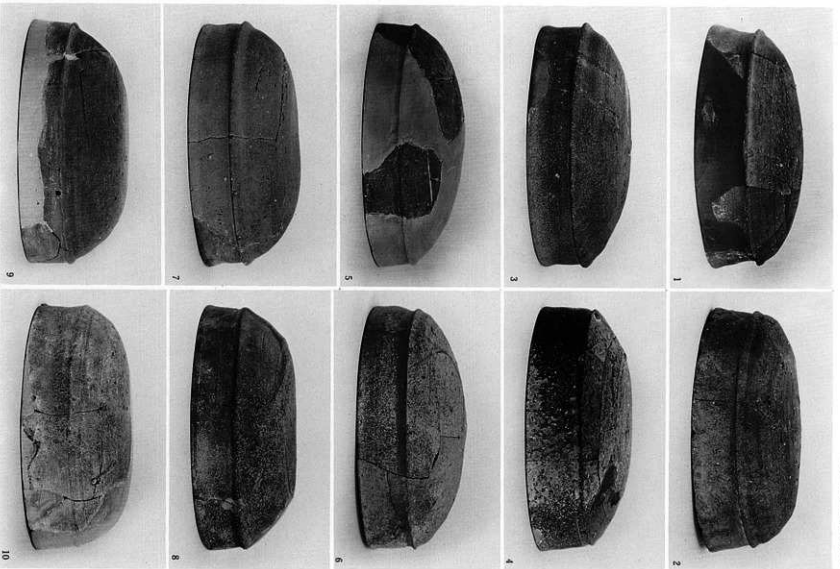


図版二四六 沖積段丘面各遺構・包含層出土須器

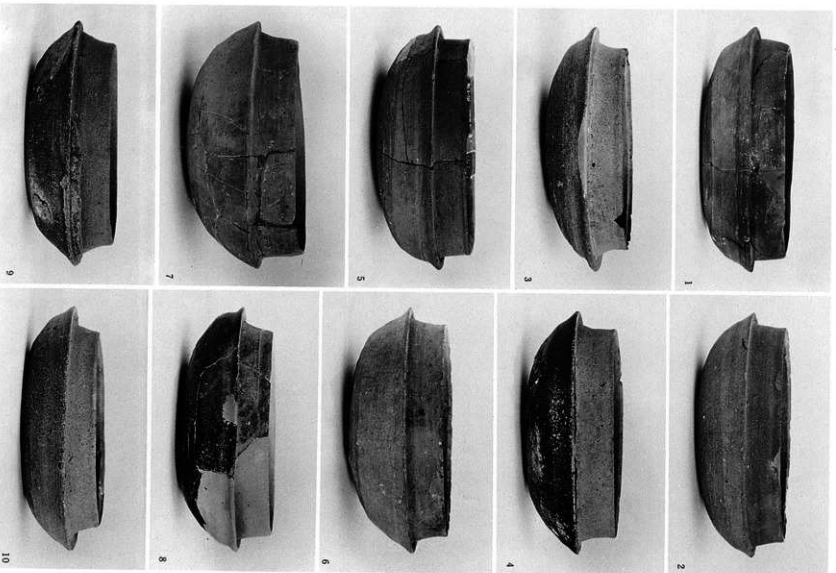
(1) 黑色粘質土瓶、(2) SDN21Ⅲ、(3) SKN6、(4・5) SBK1・2、(6・7) SKN7



図版二四七 沖積段丘面SKN7出土須恵器



图版二四八 冲积段丘面茶黑色粘质土层出土须惠器



图版二四九 冲积坡丘面茶黑色粘质土磨出土须惠器

9

7

5

3

1

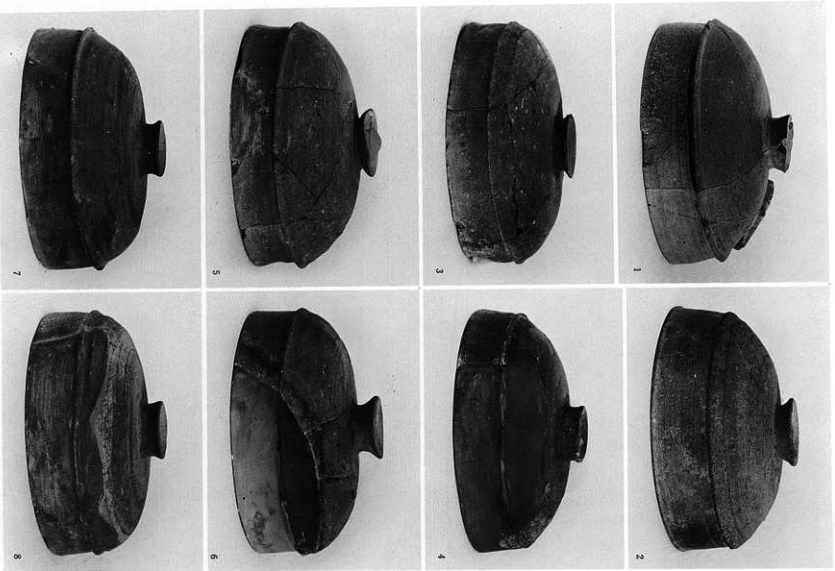
10

8

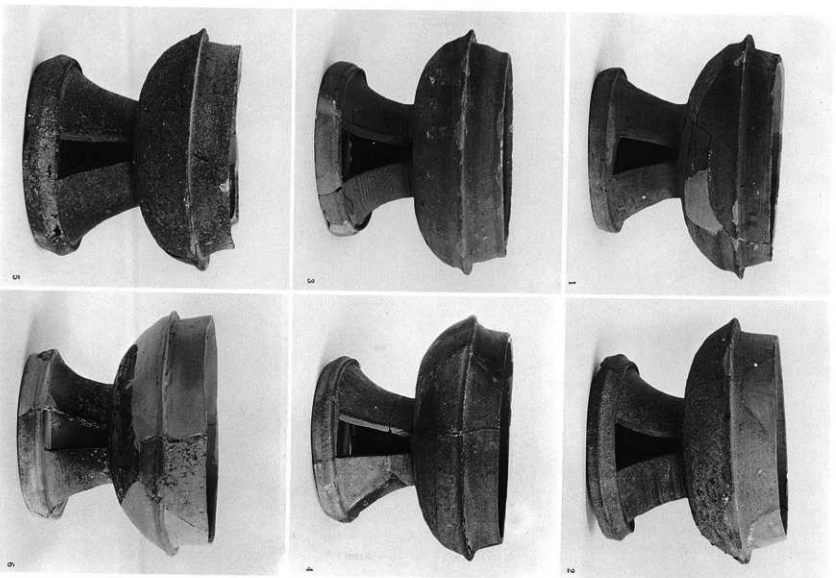
6

4

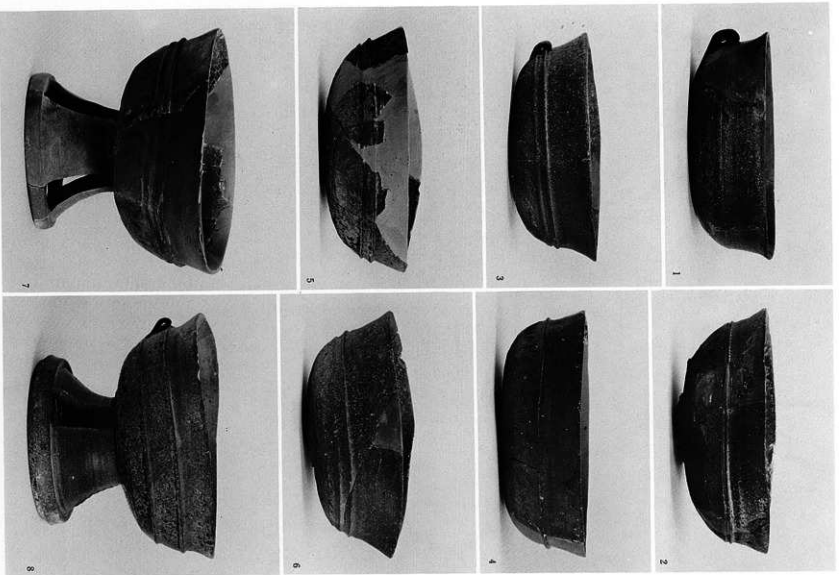
2



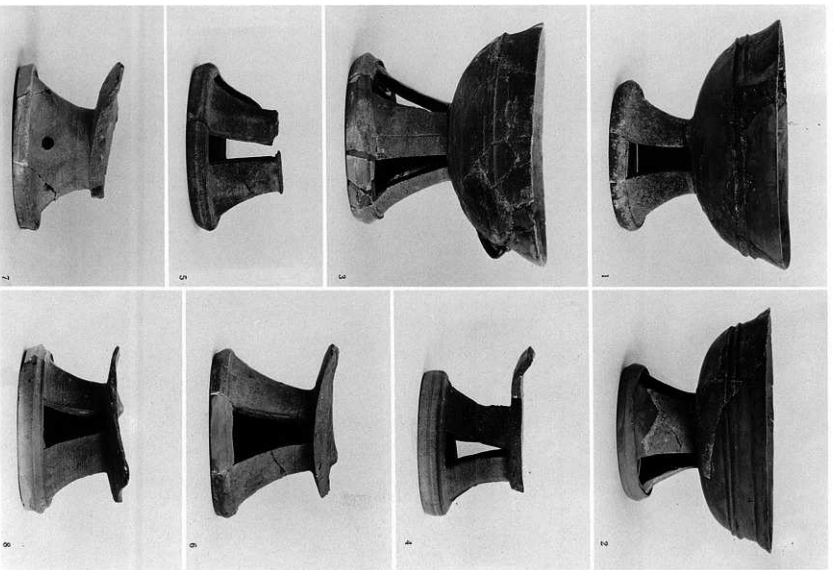
図版一五〇 沖積段丘面茶黒包粘質土層出土須恵器



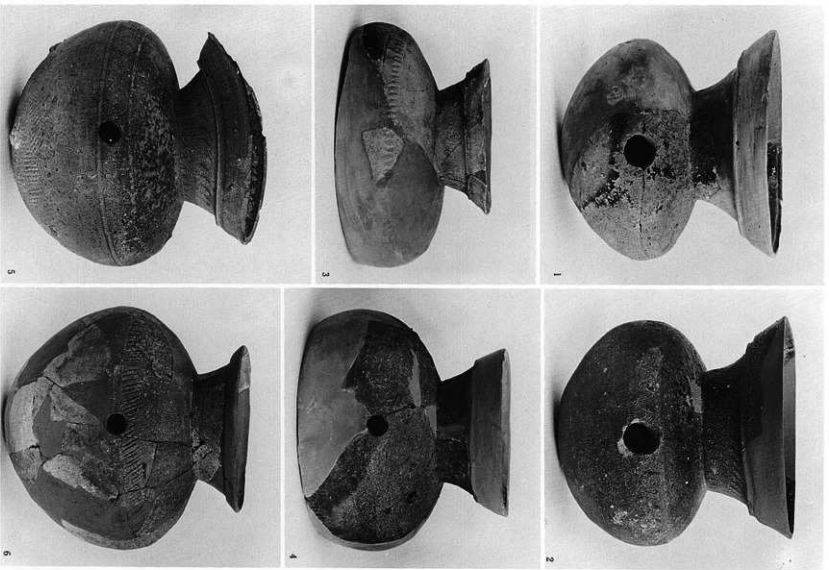
図版二五一 沖積段丘面茶黒色粘質土層出土須臾器



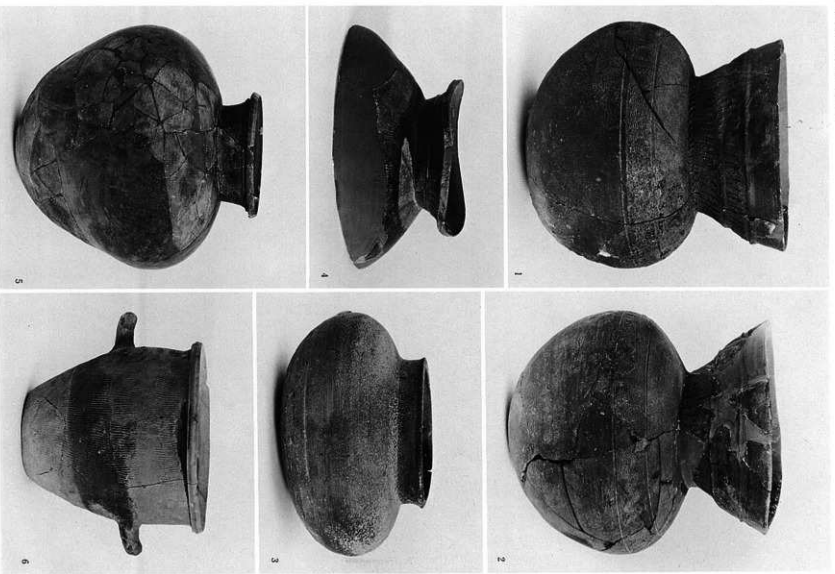
図版二五二 沖積段丘面茶黑色粘質土層出土須臾器



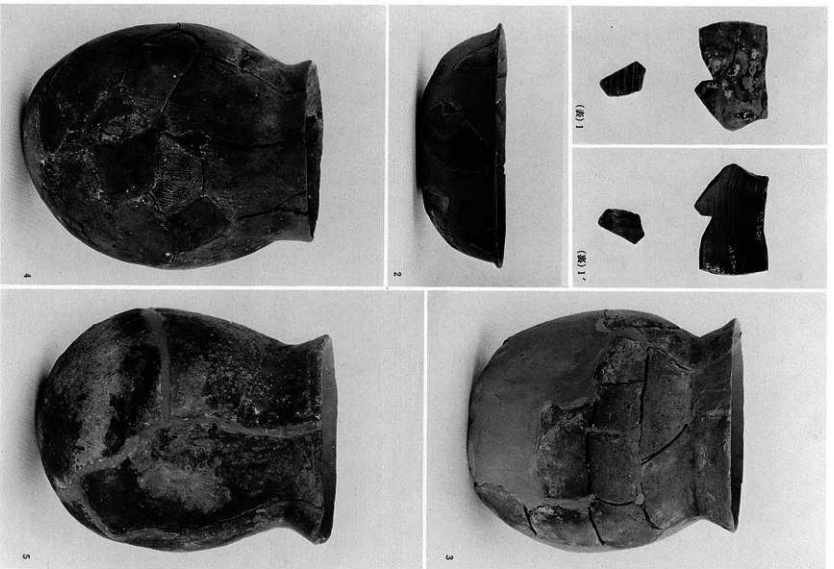
図版三五 沖積段丘面茶黒色粘質土層出土須器



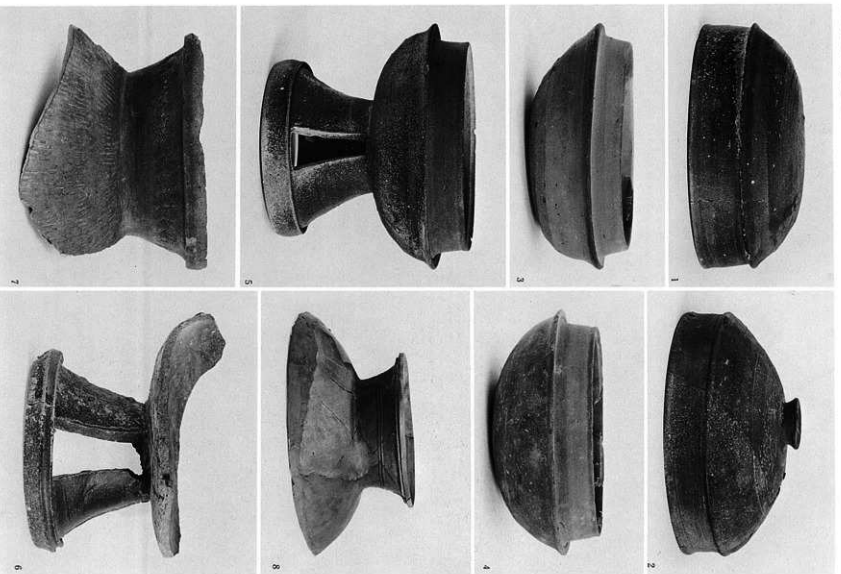
圖版二五四 沖積段丘面茶黑色粘質土層出土須器



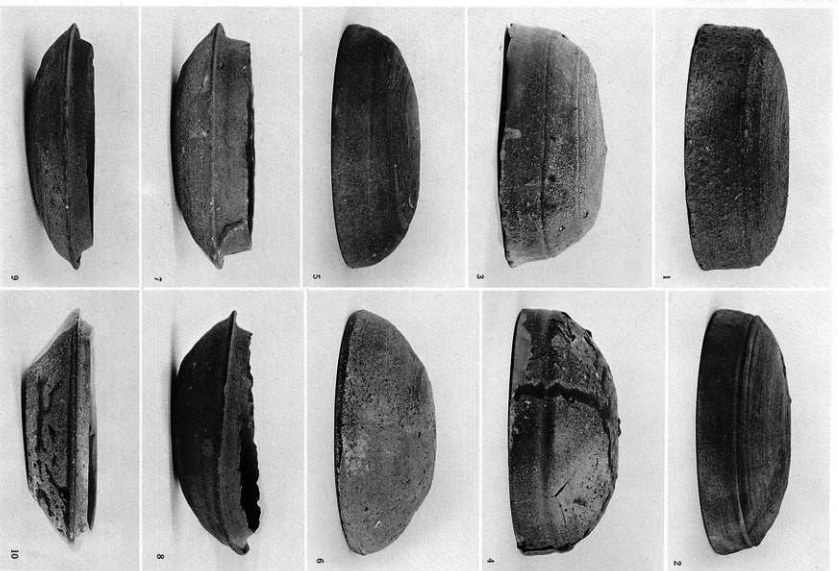
図版二五五 沖積段丘面茶黒包粘質土層出土須恵器



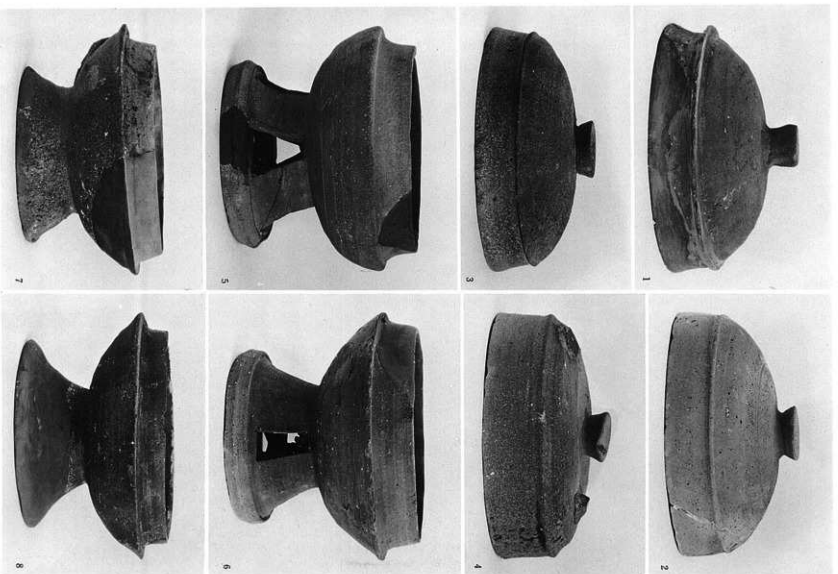
図版二五六 沖積段丘面茶黑色粘質土層出土師器・製埴土器



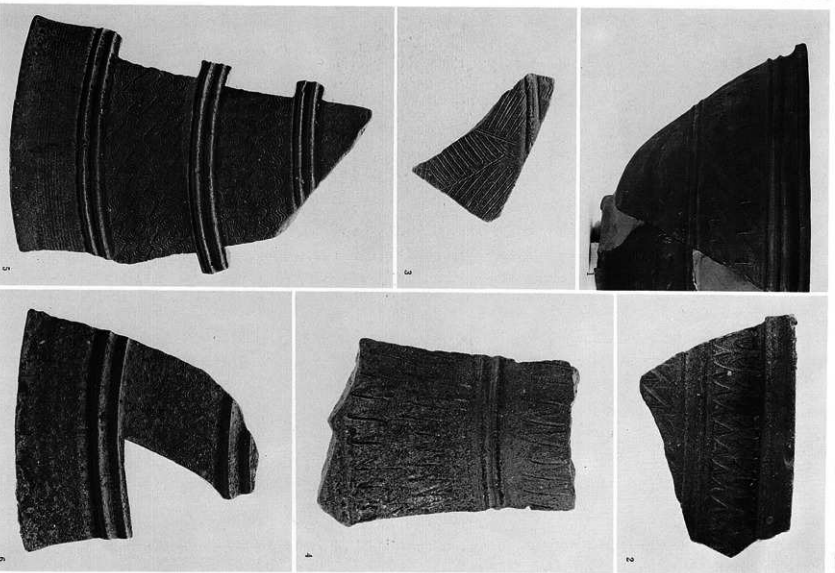
図版三五七 沖積段丘面SDN2Ⅱ期出土須恵器



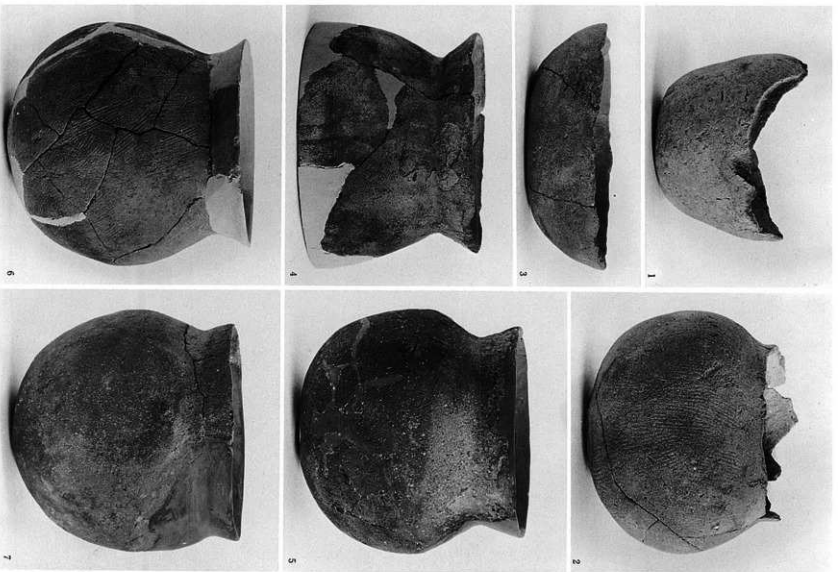
図版二五八 沖繩段丘面S D N 2皿棚出土須恵器



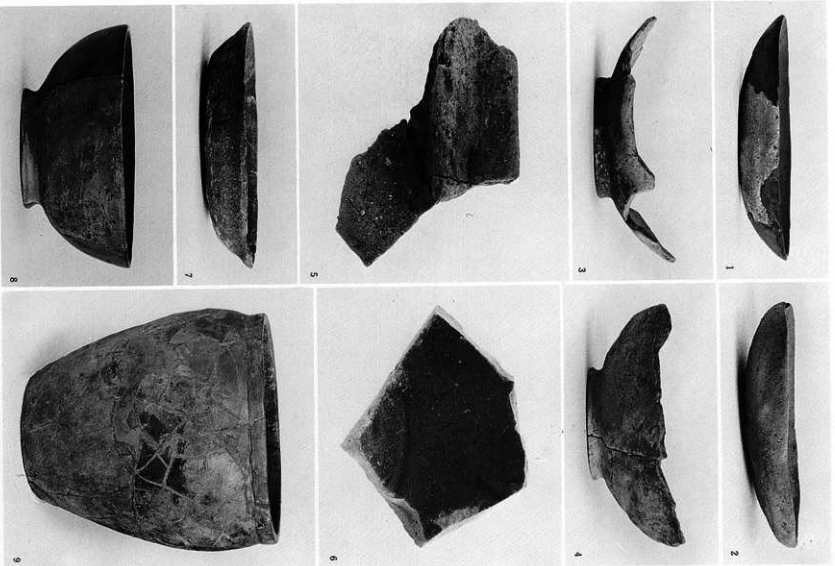
图版三五九 冲糝段丘面S DN 2 Ⅱ期出土须臾器



図版二六四 沖繩段丘面S D N 2 II・Ⅲ期出土須惠器

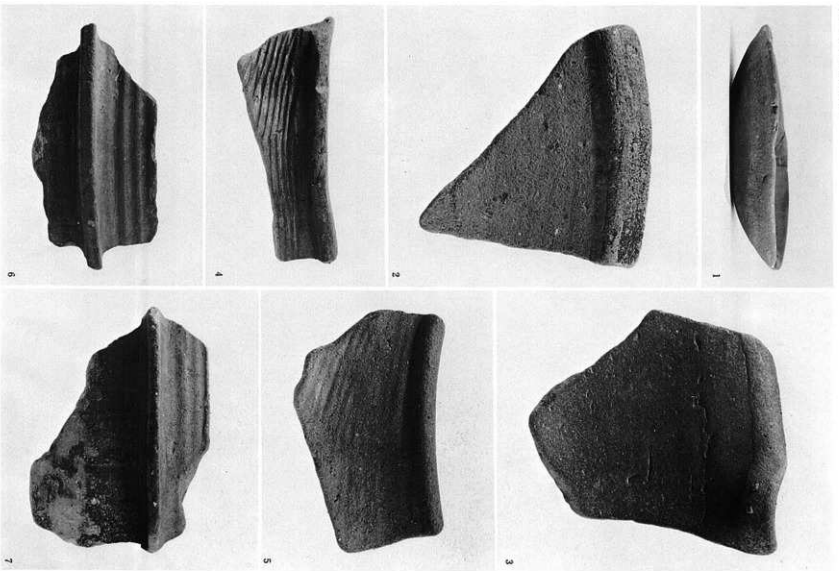


图版二六五 冲积段丘面S DN 2 Ⅲ期出土陶器

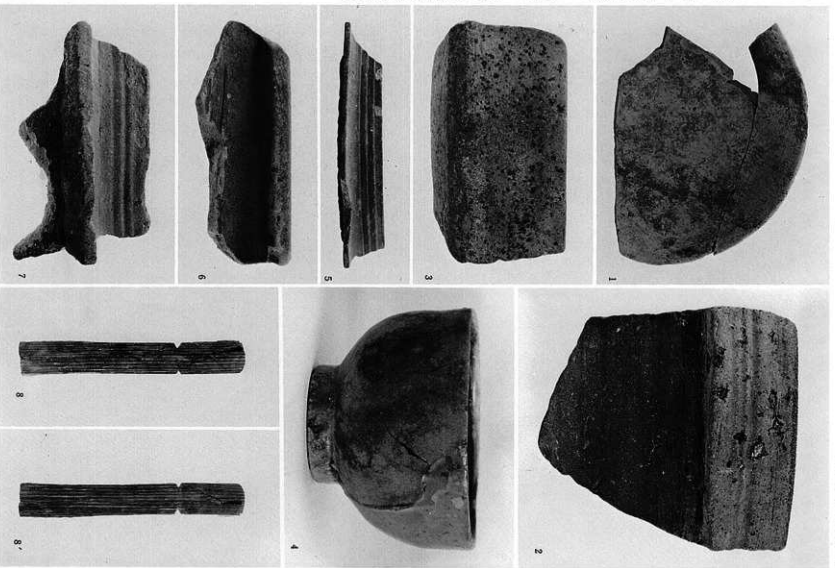


図版二六六 神積段丘面SBP1・2・包含層・SKA4出土器

(1・3・5) SBP1、(2) SBP2、(4・6~8) 包含層、(9) SKA4

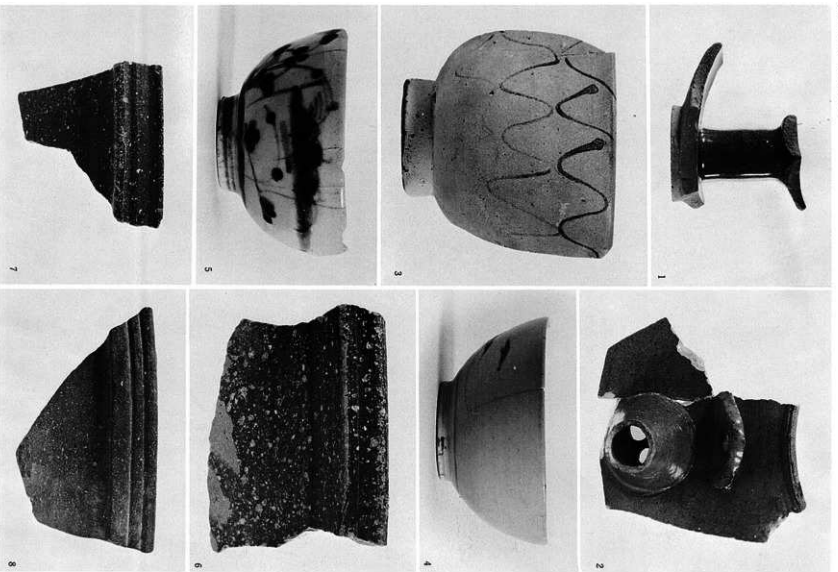


図版二六七 氾濫原室町時代洪水跡出土土器

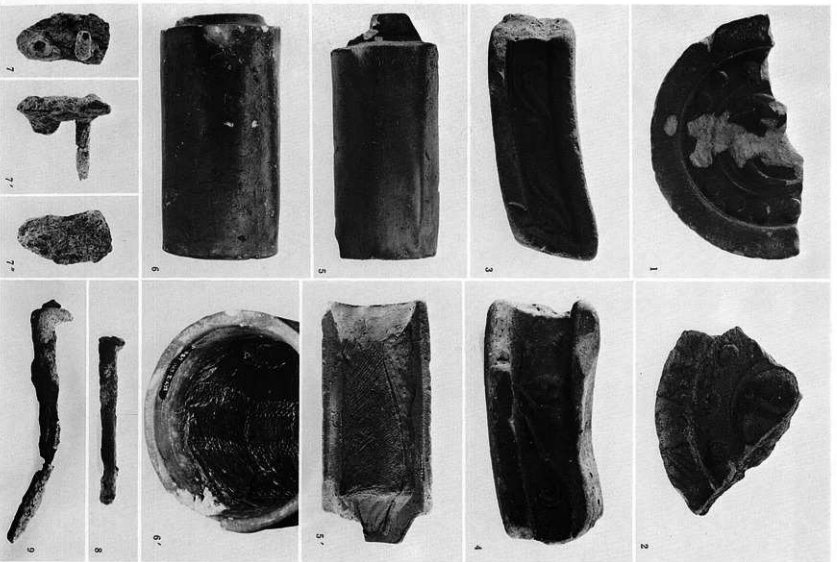


図版二六八 氾濫原江戸時代洪水堆積層・蛇行州と後背漫地堆積層出土遺物

(1~4) 江戸時代洪水堆積層、(5~8) 蛇行州と後背漫地堆積層

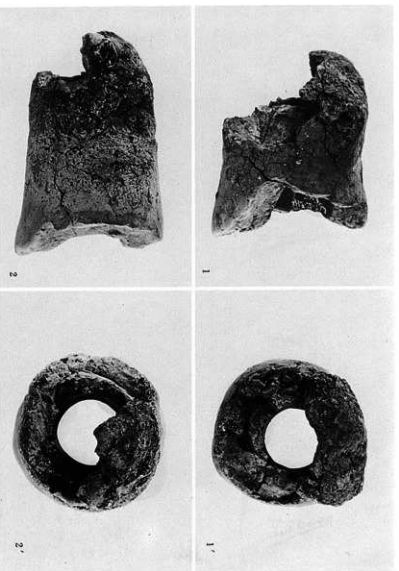


図版二六九 泡瀬原江戸時代シルト堆積層・SDN3出土器

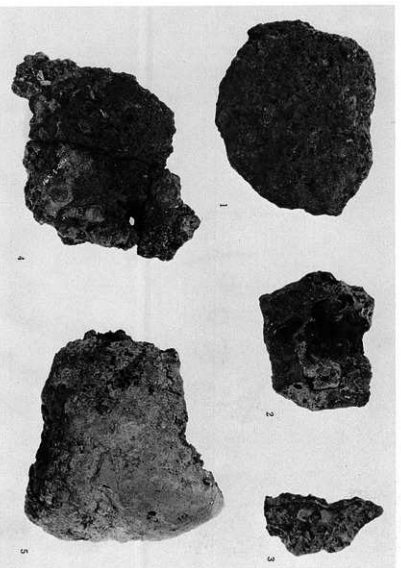


図版二七〇 沱瀨原・沖積段丘而出土瓦・鉄釘

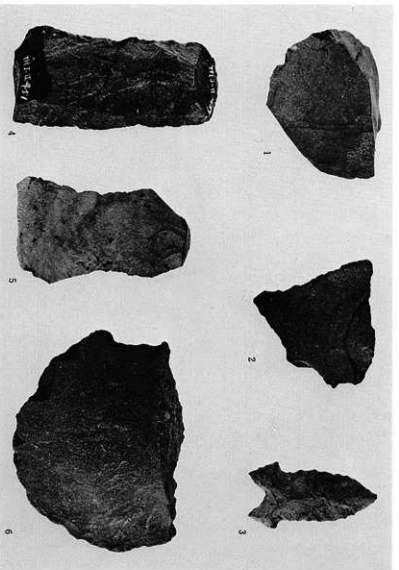
(1) SDN 3、(2) 蛇行州及び後背湿地堆積層、(3・5) 葦町時代洪水跡、(4) 近世洪水跡
 (6・6'・8) 近世シルト堆積層、(9) 沱瀨原出土地点不明、(7・7'・7'') SBP 1



(1・1') SDN2Ⅰ期、(2・2') SDN2Ⅱ期

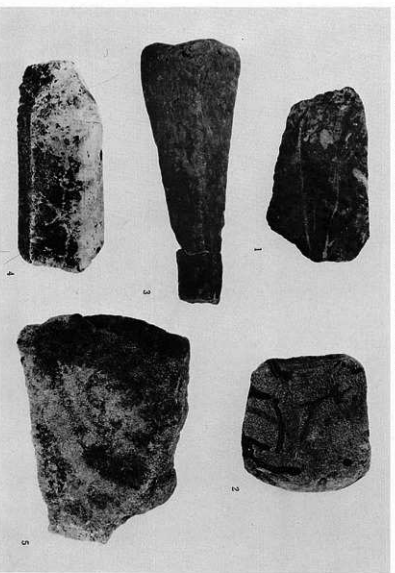


(1・2) SDN2Ⅰ期、(3) 茶黑色粘質土層、(4・5) SDN2Ⅱ期



図版二七 一 沖積段丘面・氾濫原出土石器

沖積段丘面 (1) 黒色粘質土層、(3) 茶黒色粘質土層、(5) 灰茶色粘質土層
氾濫原 (2・6) 室町時代洪水堆積層、(4) 肥行州及以後普通地堆積層



沖積段丘面 (1・2) SDN2 I期、(3) SDN2 Ⅱ期、(4・5) 茶黒色粘質土層