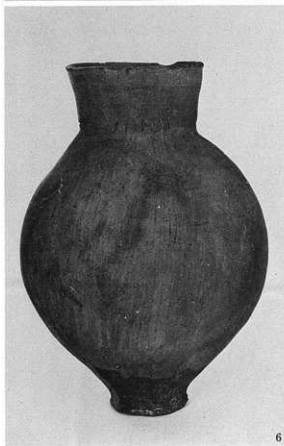
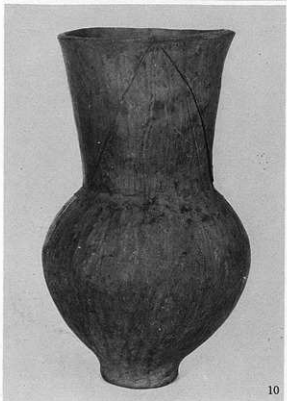
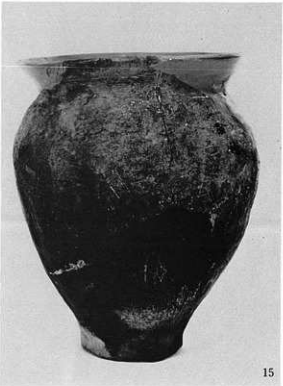


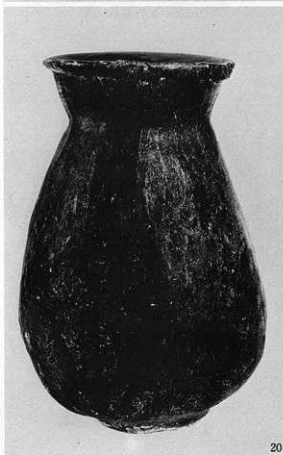
SD-03 1(第21図1)、2(第22図)
SK-04 3(第24図2)、4(第24図1)



SD - 12 5 (第29図2)、6 (第30図9)、7 (第29図3)、8 (第29図8)

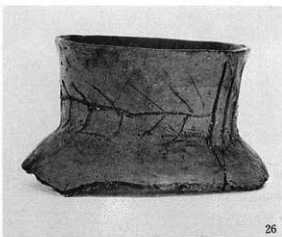








23



26



24



27



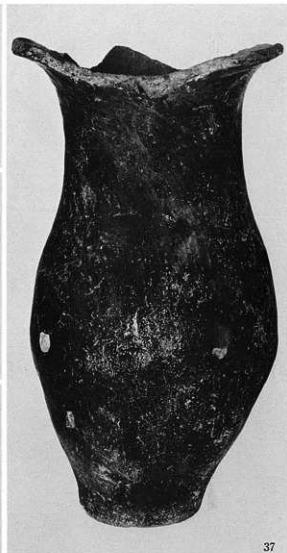
25



28

S K - 05 23(第36图2)、S K - 07 24(第43图)、S K - 15 25(第41图)
S D - 03 26(第51图2)、27(第51图5)、28(第52图24)







39



40



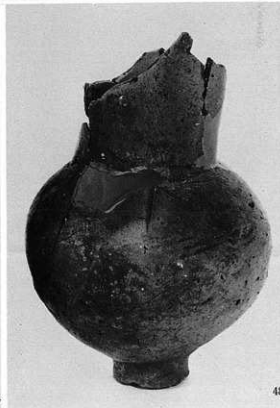
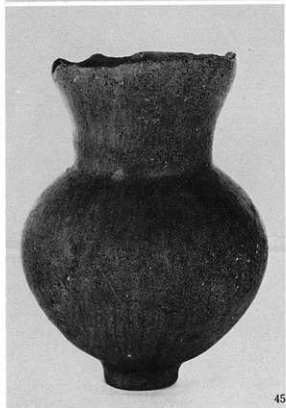
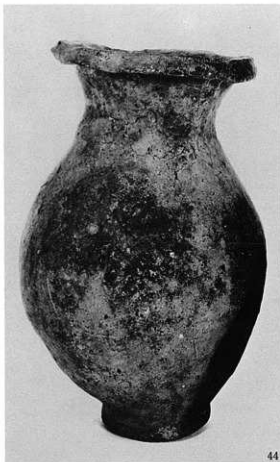
41



42



43



S D - 20 44(第59图6)

S D - 09 45(第61图4)、46(第61图2)、47(第61图1)、48(第61图6)



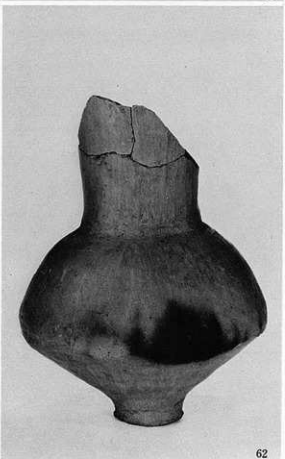
59



61



60



62









79



81



80



82









103



104



105



107



106



108



109



111



112



110



113



114



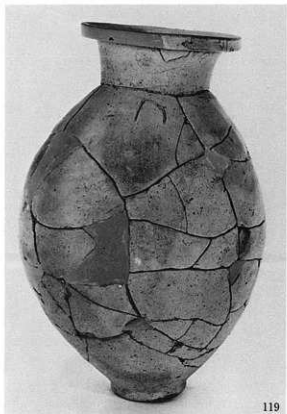
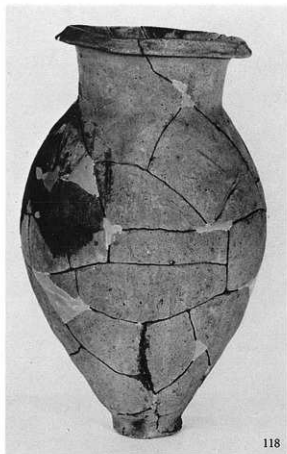
116



115



117





122



124



123



125



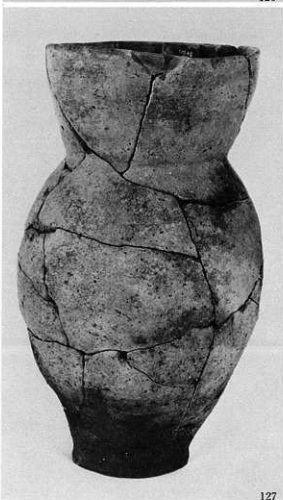
126



128



129



127



130



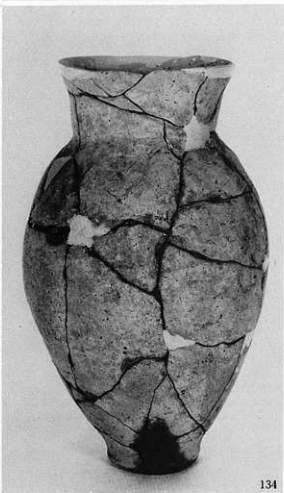
131



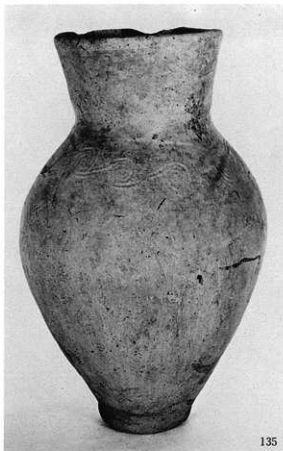
133



132



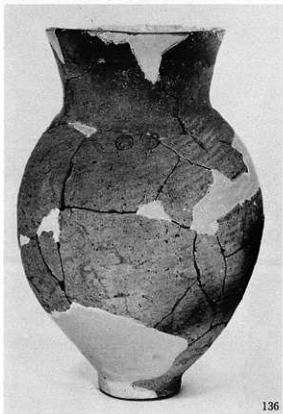
134



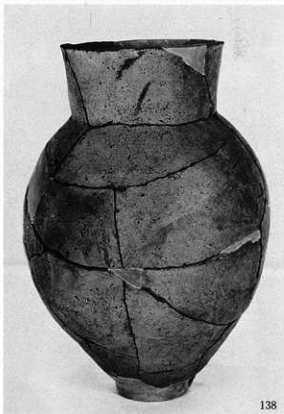
135



137



136



138



S X-03 139(第105図41・44)、140(第105図47)、141(第105図43)
142(第105図40・42)、143(第105図46)、144(第105図45)









161



163



162



164





169



172



170



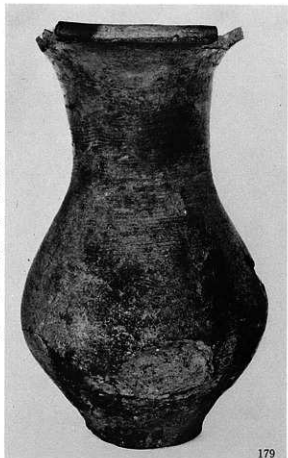
171



173



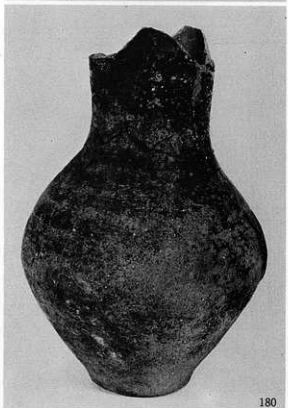
S K - 18 174(第121图1)
S K - 19 175(第117图2)、176(第117图1)、177(第117图3)
S K - 21 178(第119图3)



179



181



180



182



183



186



184



187



185

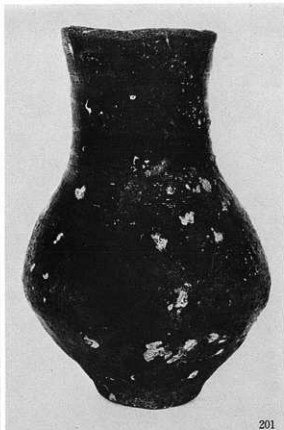


188

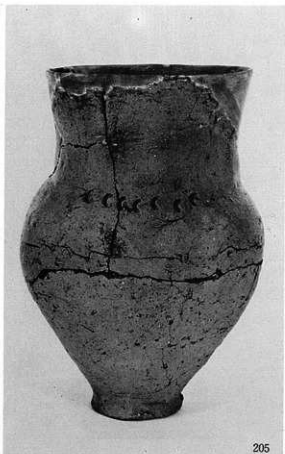
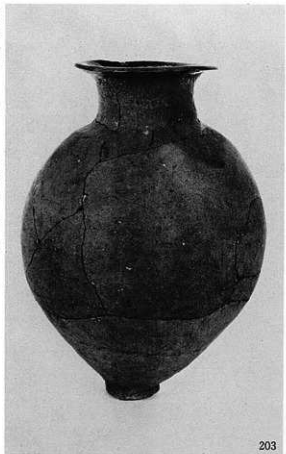


189





SD-20 197(第133图8)、198(第133图6)、201(第133图5)
SD-27 199(第144图20)、200(第144图21)、202(第142图1)





207



208



209



210



211



212



214



215



213



216



217



218



219

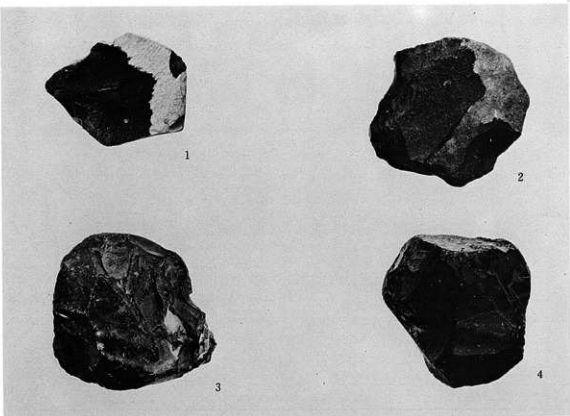


220



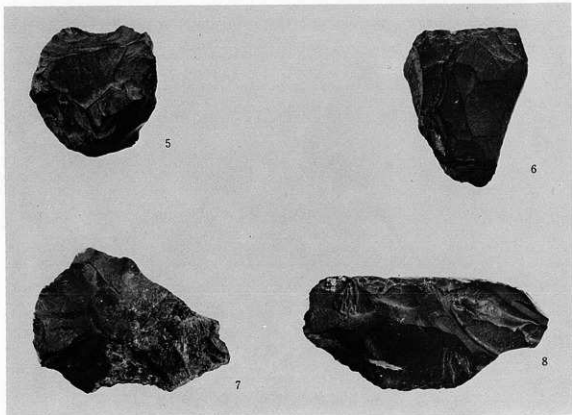
221

S K-25 219(第153図13)
S K-26 220(第155図1)
S D-30 221(第157図1)

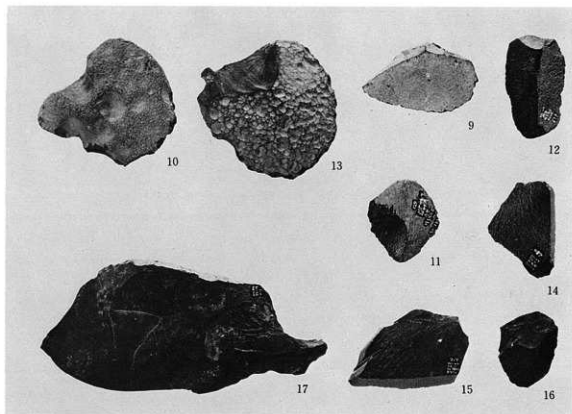


石核 (1~4)

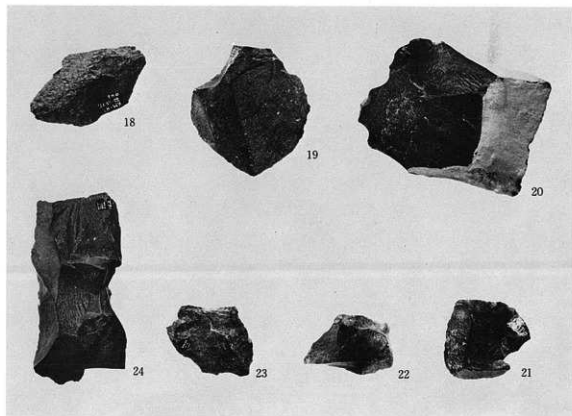
※石器の番号は本文編の第159~188図の番号と同じ (34)



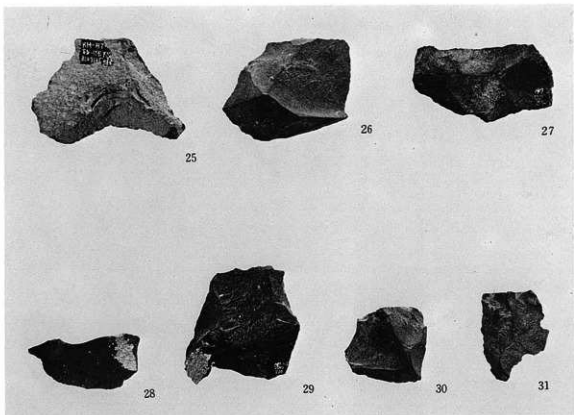
石核 (5~8)



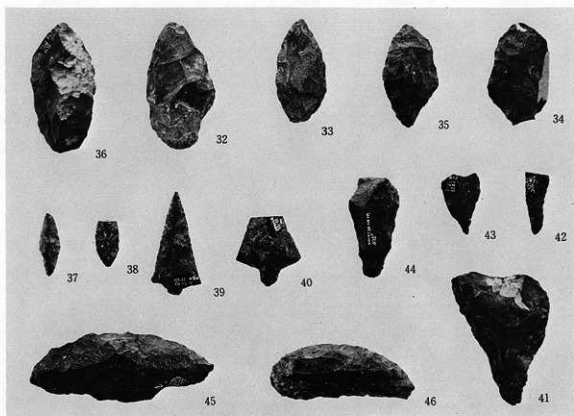
剥片 (9~17) (35)



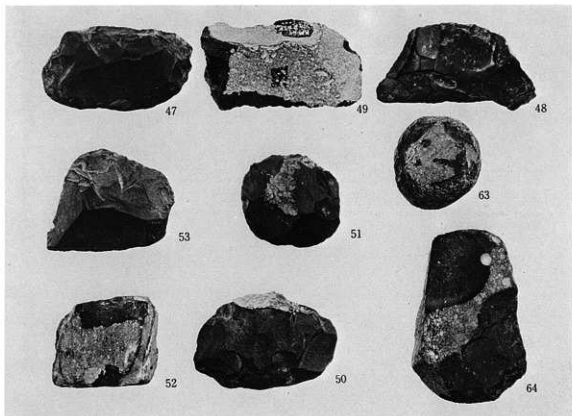
剥片 (18~24) (36)



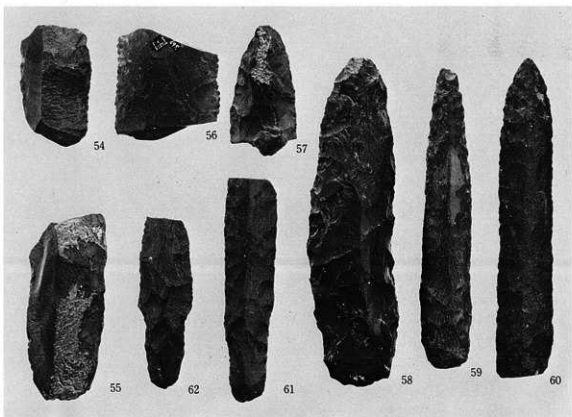
剝片 (25~31) (36)



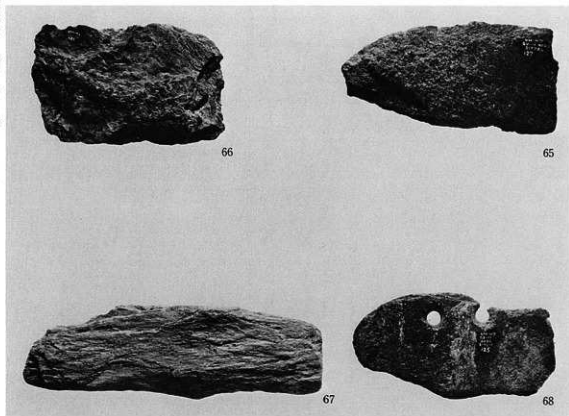
石鏃 (32~40) 石錐 (41~44) 石小刃 (45・46) (36)



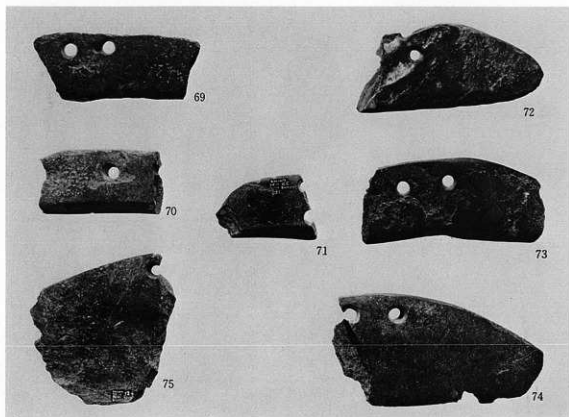
削器 (47~49) 両面加工石器 (50) 円形播器 (51) 楔型石器 (52・53) 打製敲き石 (63・64) (3)



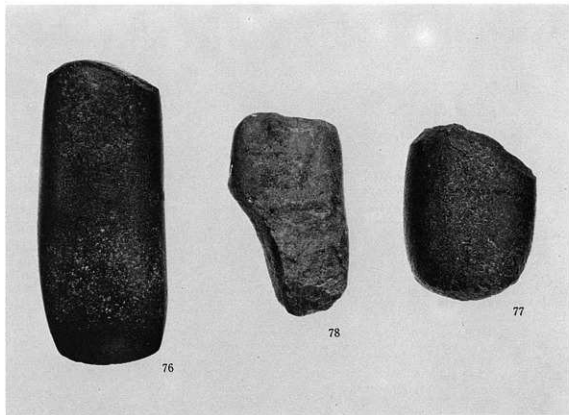
石槍 (54~62)



石廬丁 (65~68) (1/4)

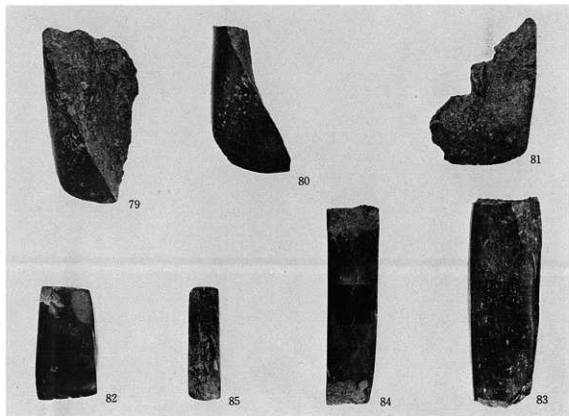


石廬丁 (69~75) (1/4)



大型蛤刃石斧 (76~78)

(1/4)

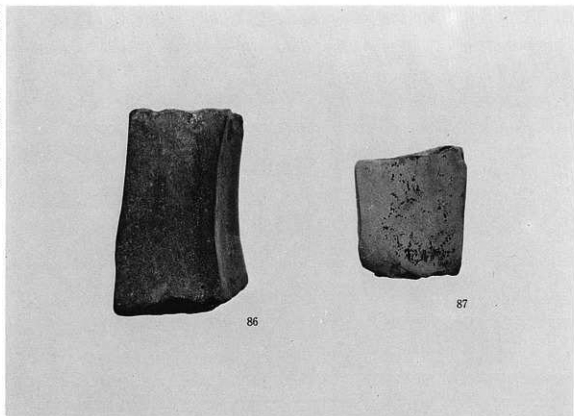


大型蛤刃石斧 (79・80)

扁平片刃石斧 (81・82)

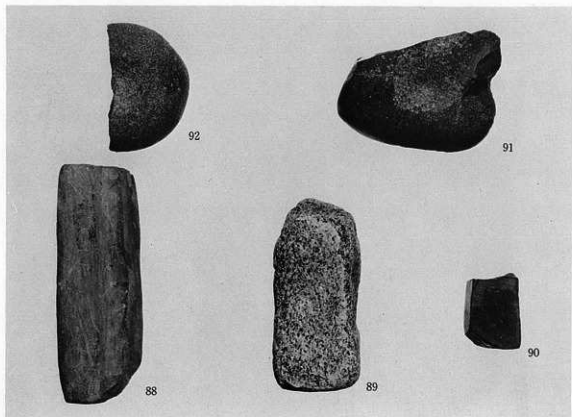
柱状片刃石斧 (83~85)

(1/4)



砥石 (86・87)

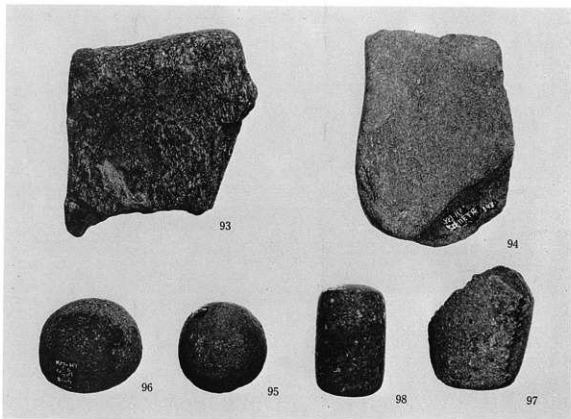
(1/2)



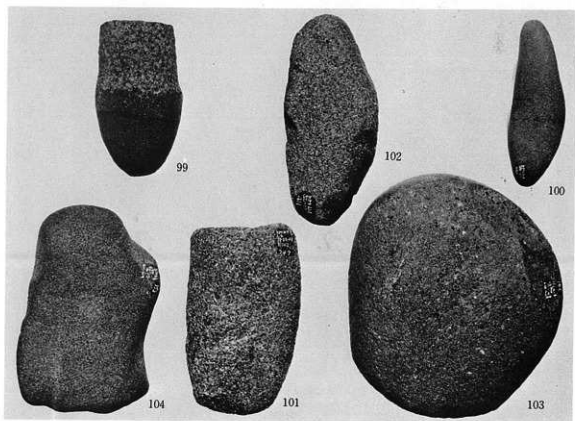
砥石 (88~90)

凹石 (91・92)

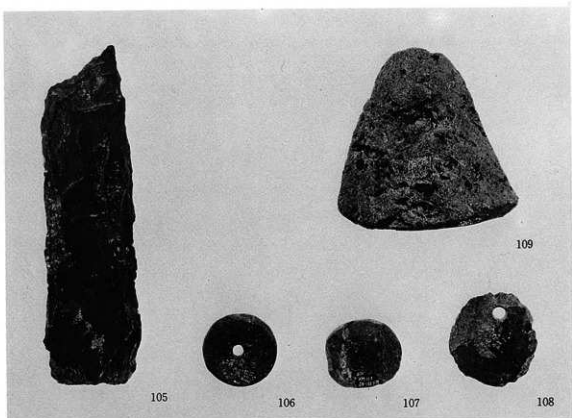
(1/2)



石皿 (93・94) 磨石 (95-98) (1/2)



石槌 (99) 敲き石 (100-104) (1/2)

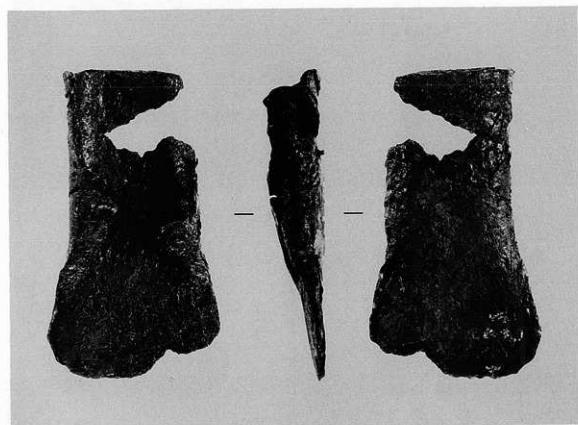


磨製石剣未製品 (105)

石製紡錘車と円板 (106~108)

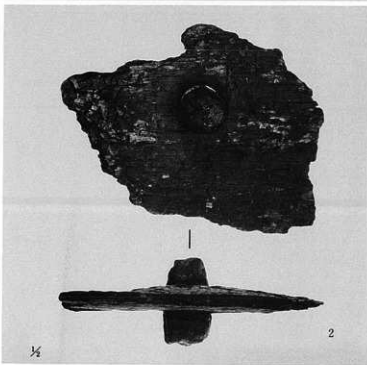
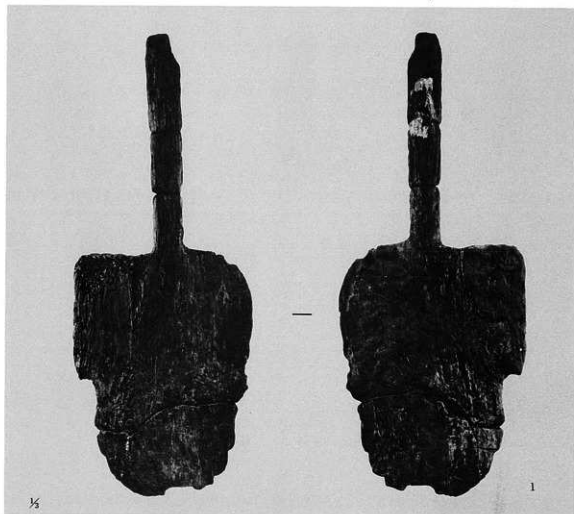
軽石 (109)

(ㄩ)

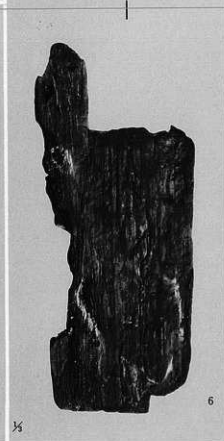
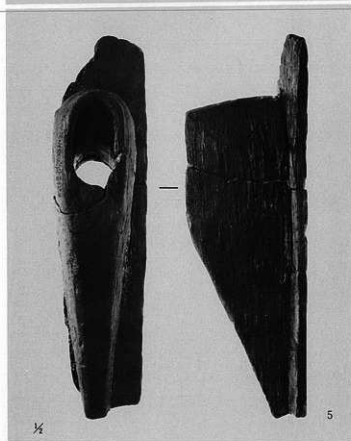
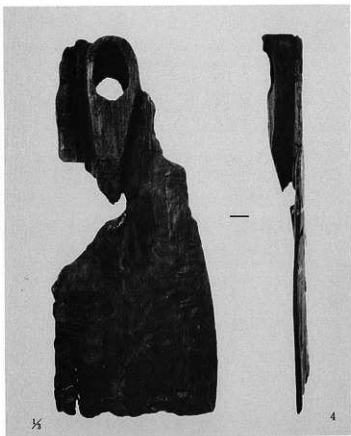


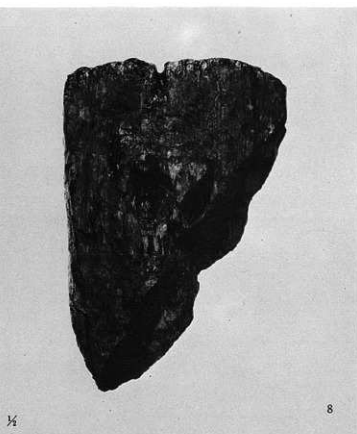
鉄斧 (第243図)

(ㄩ)



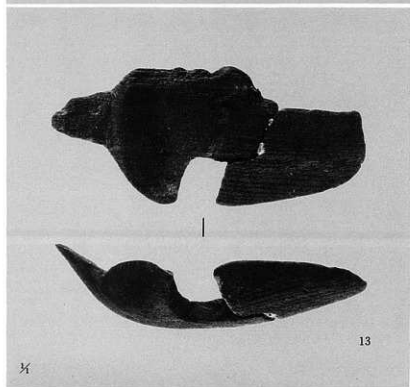
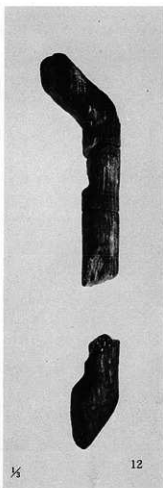
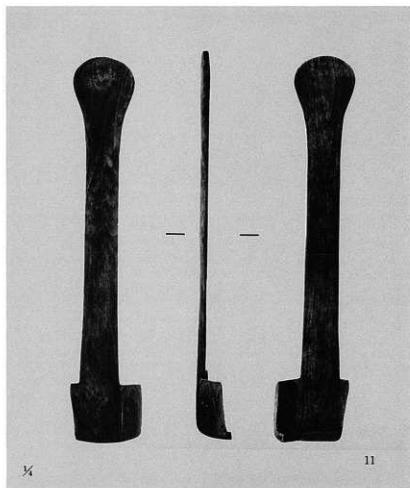
SD-19 1 (第205図1)、2 (第206図5)、3 (第205図2)

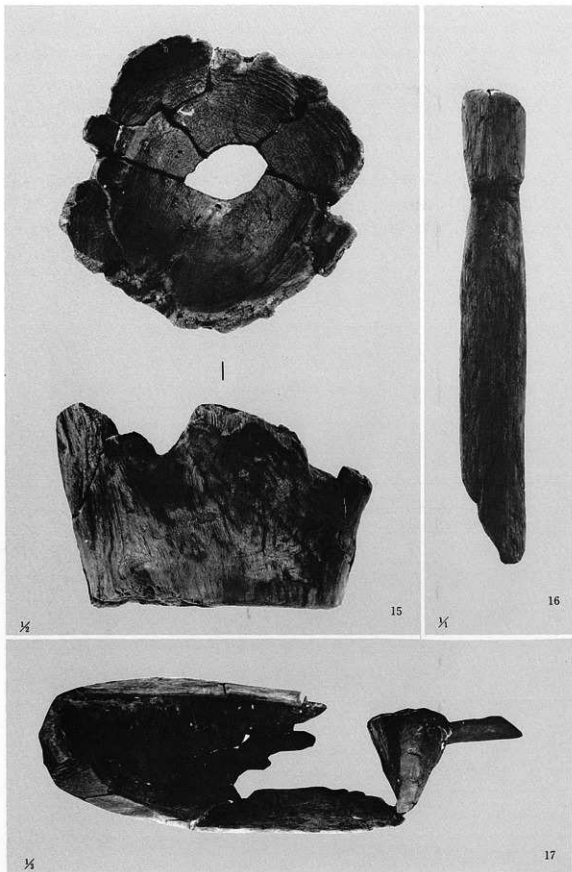


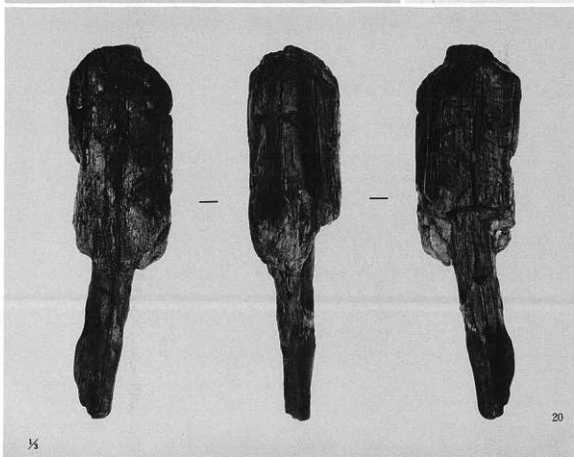
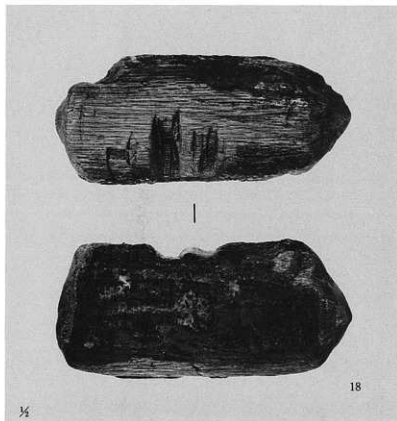


SD-19 7 (第206図6)、8 (第206図8)、9 (第206図9)

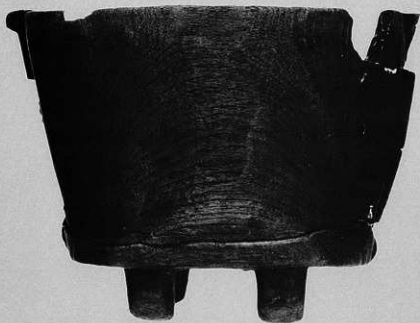




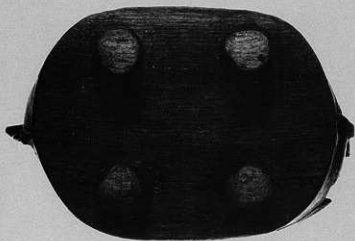


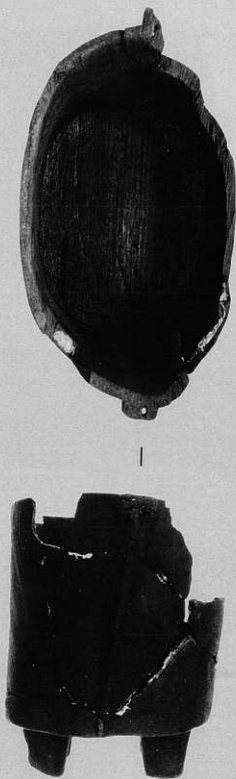


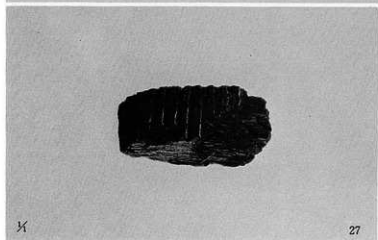
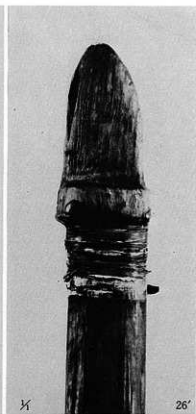
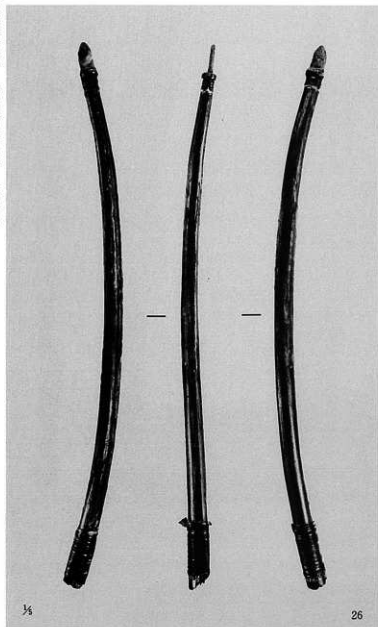
S D—19 18(第209図18)、19(第209図20)、20(第209図19)

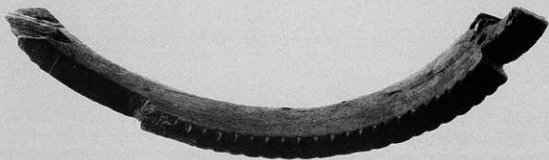


|

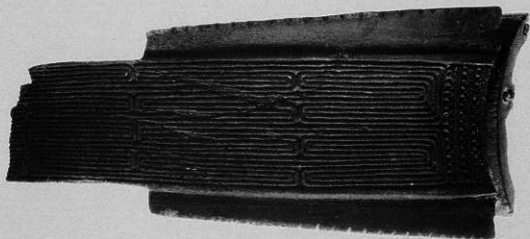




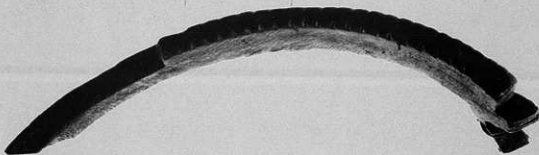


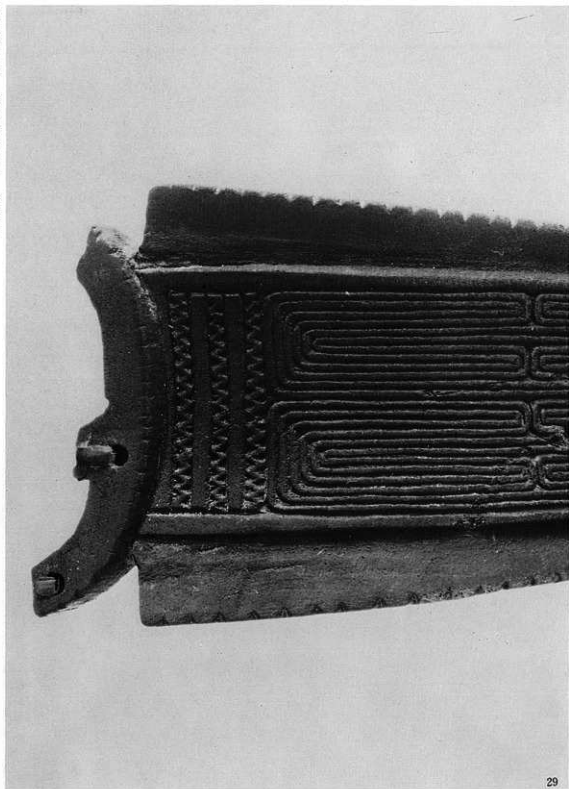


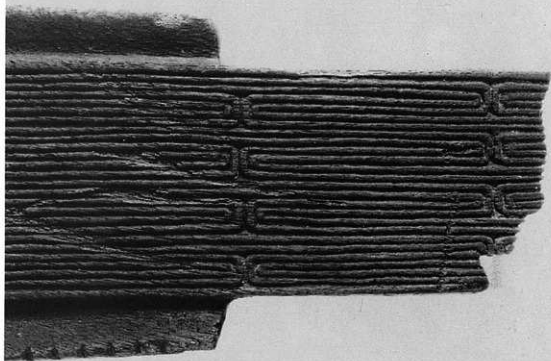
|

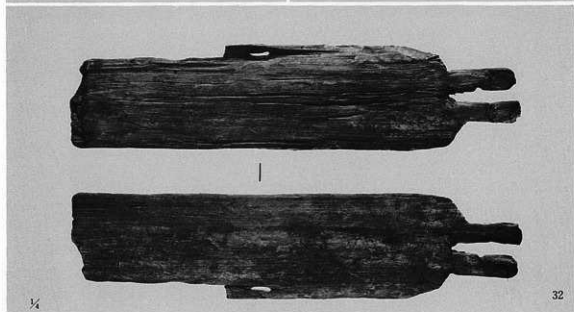
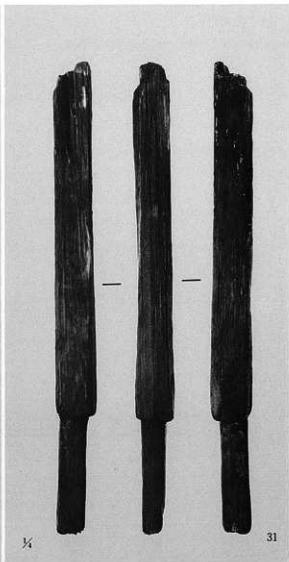
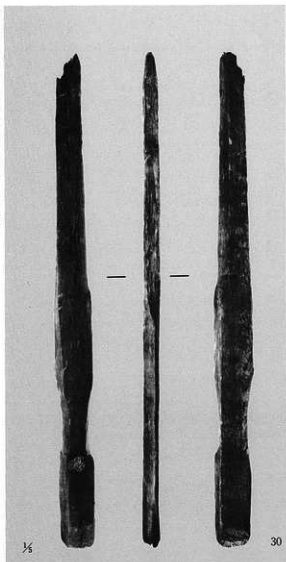


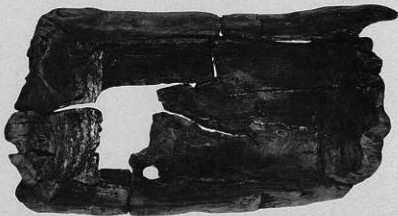
|



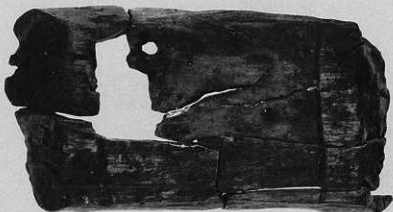








|



1/2

33

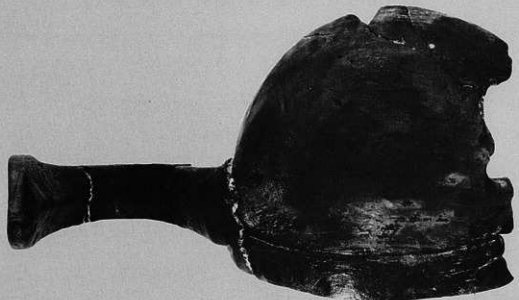
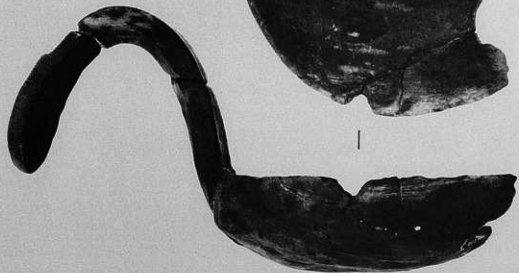


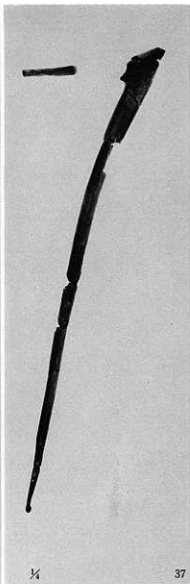
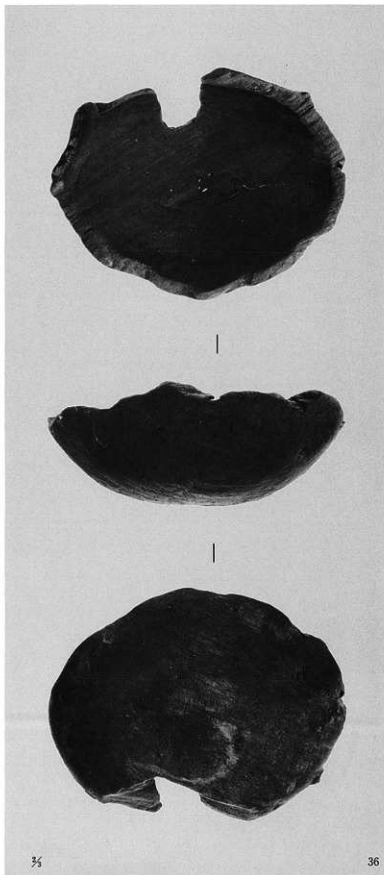
|



1/4

34

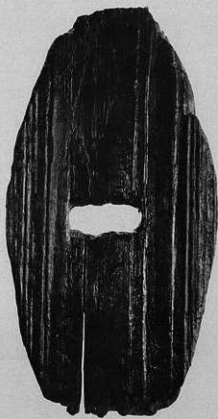




S D-20 36(第217图435)
S K-21 37(第222图43)、38



1/4

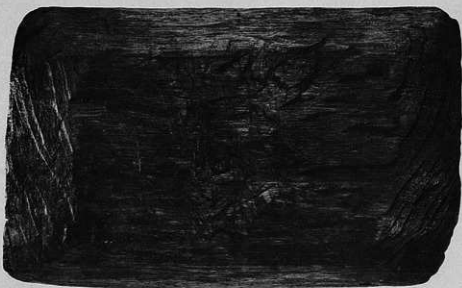
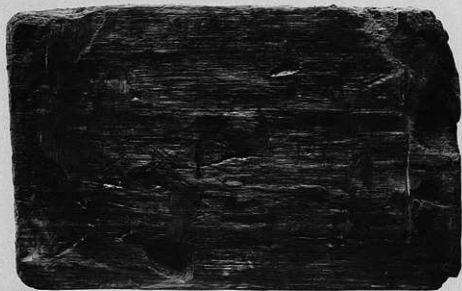


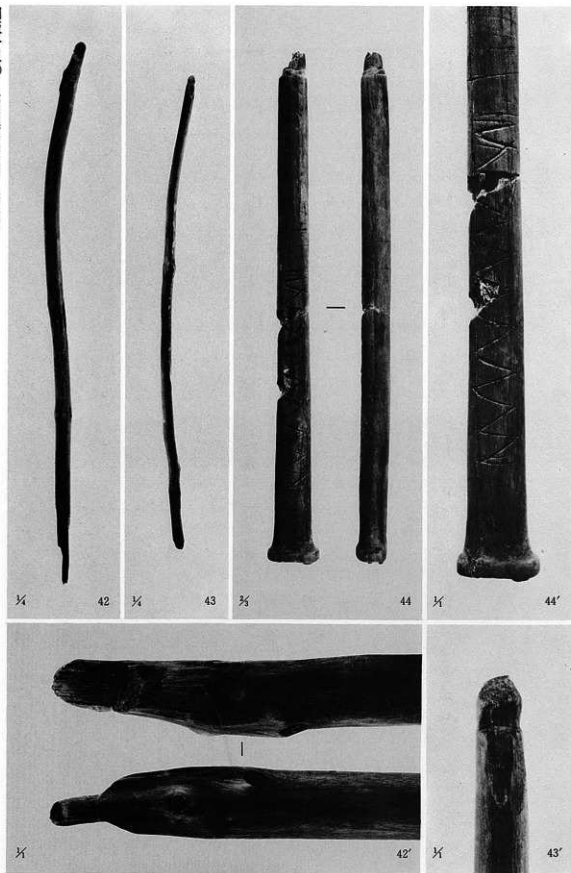
39



1/4

40

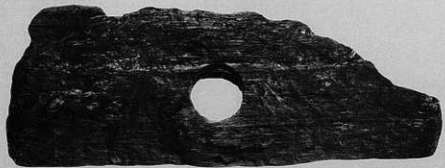






¼

45



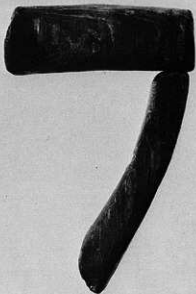
1/4

46



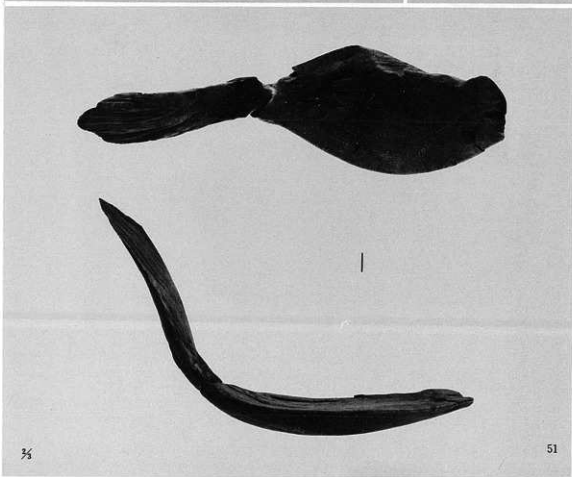
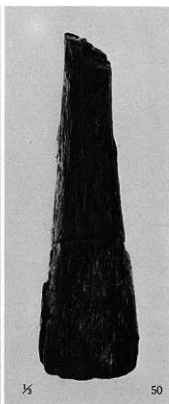
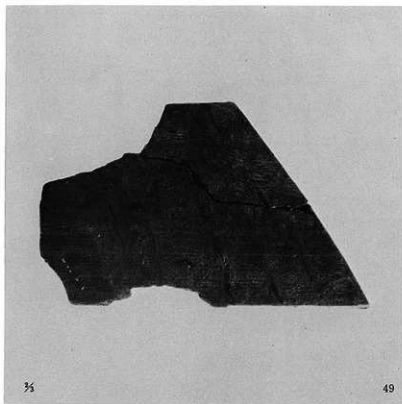
1/4

47



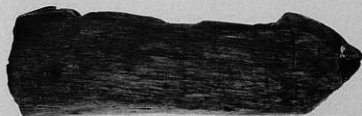
1/4

48





|



|



1/2

52



1/2

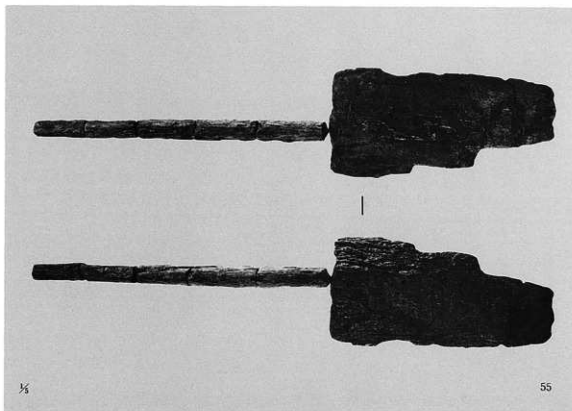
53



1/2

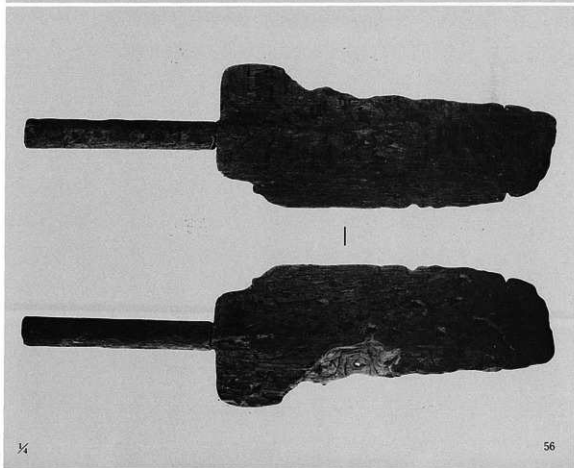
54

S D-03 52(第222图50)、53
S K-21 54(第220图42)



1/4

55



1/4

56



1/4



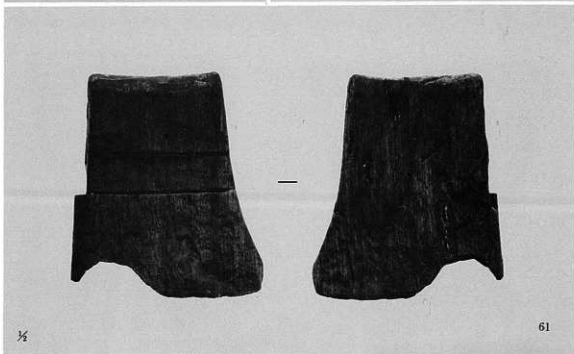
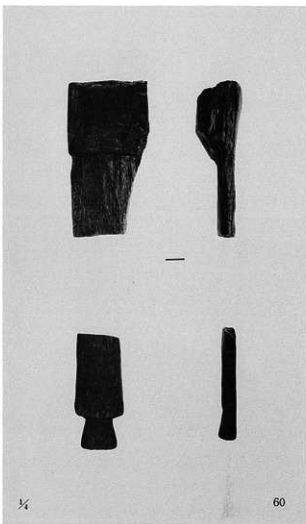
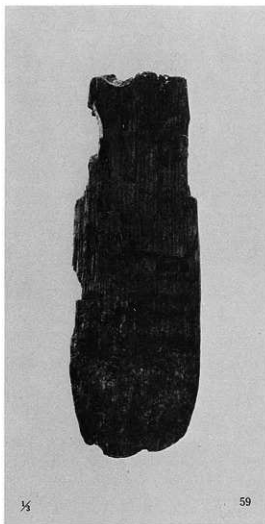
57



1/4



58





1/2

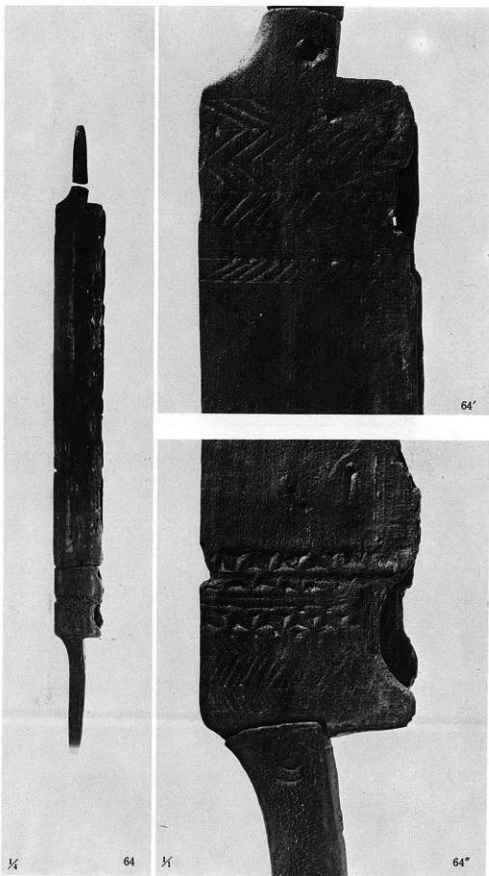
62



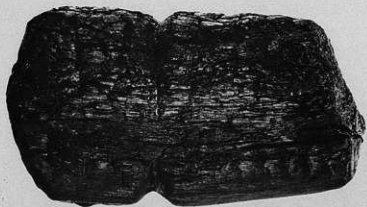
1/2



63



S D-12(S D-14) 64(第225图58)



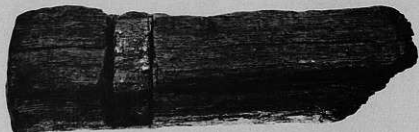
1/4

65



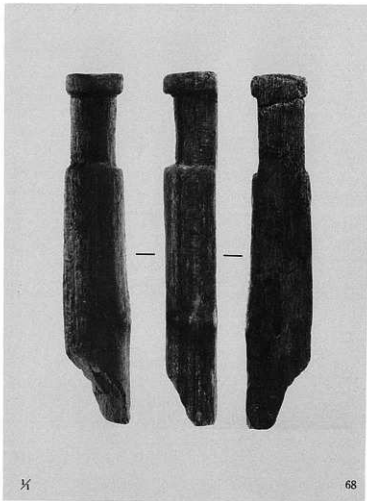
1/4

66



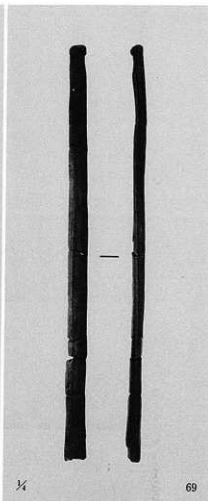
1/4

67



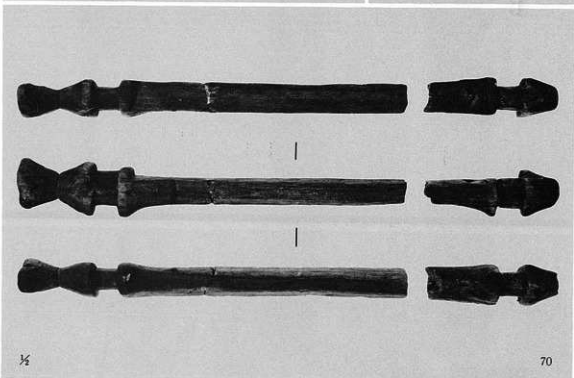
1/4

68



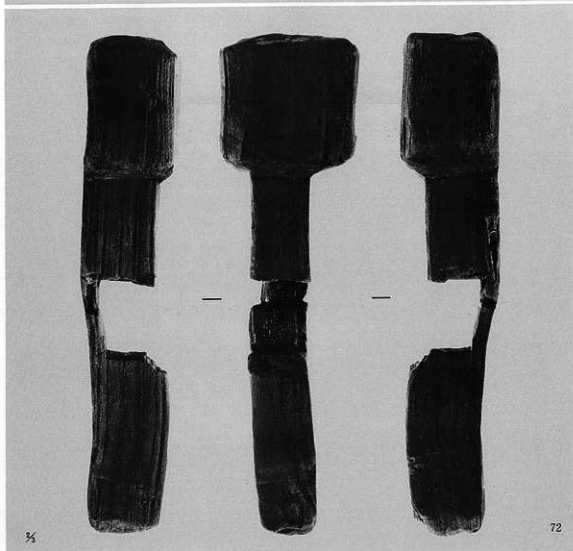
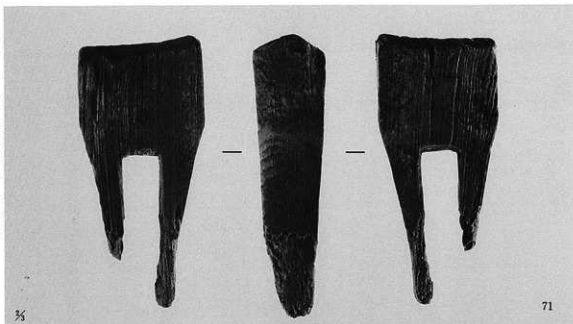
1/4

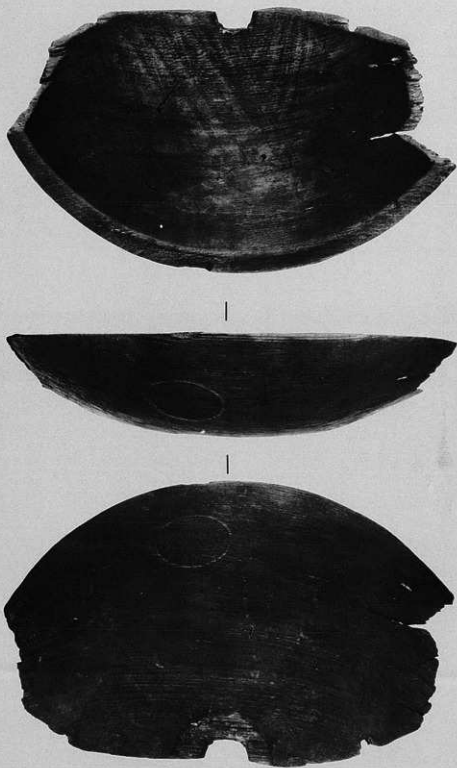
69



1/4

70







|



|



1/4

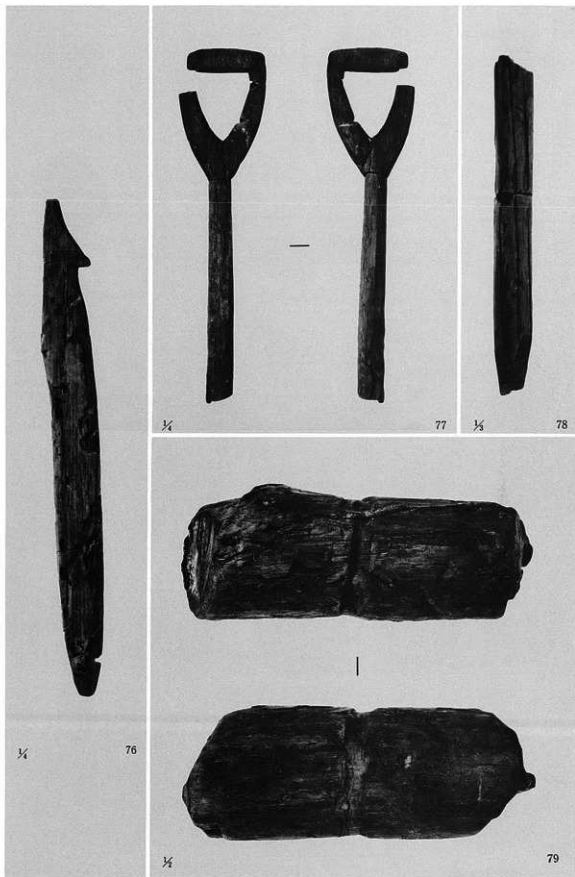
74



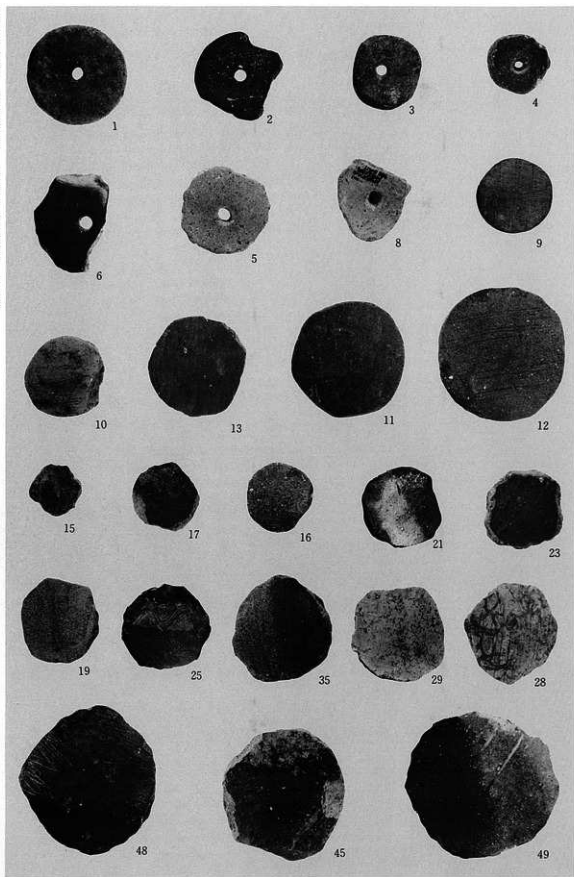
3/5



75



S K—17 76(第230图72)、77(第230图73)、78(第230图75)、79(第230图74)



※番号は本文編の第231～234図の番号と同じ。3は石製である。



238-3



238-6



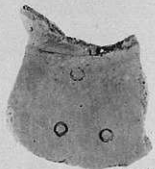
238-2



239-9



240-17



241-31



241-28



241-32

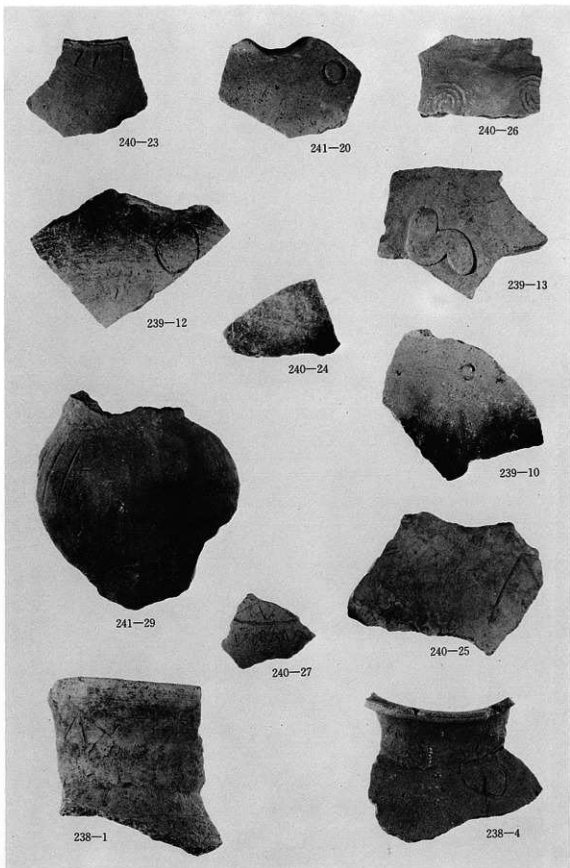


239-14



238-5

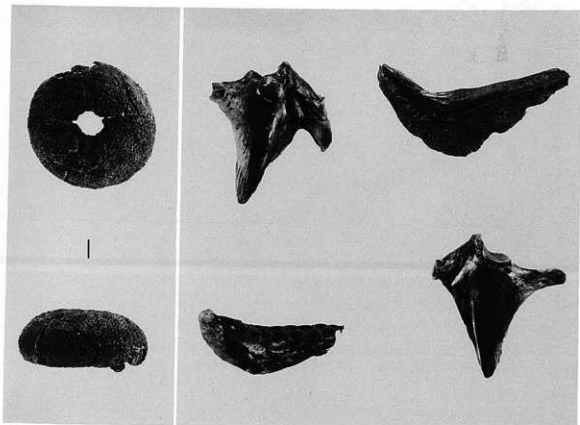
※番号は本文編の第238～241図の番号と同じ。



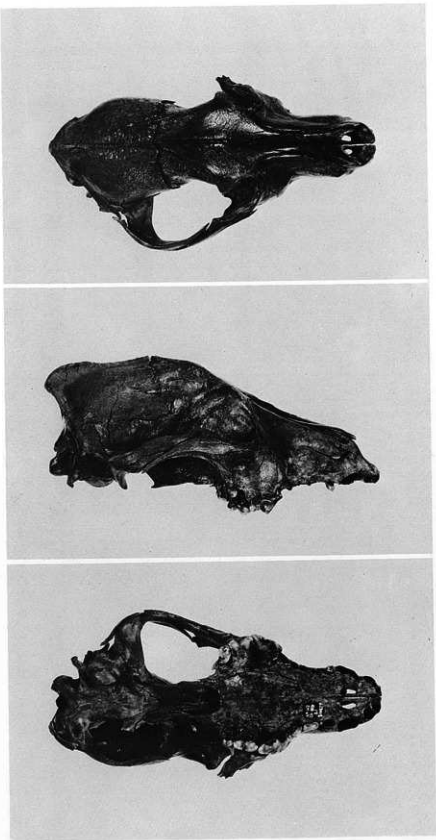
※番号は本文編の第238～241図の番号と同じ。



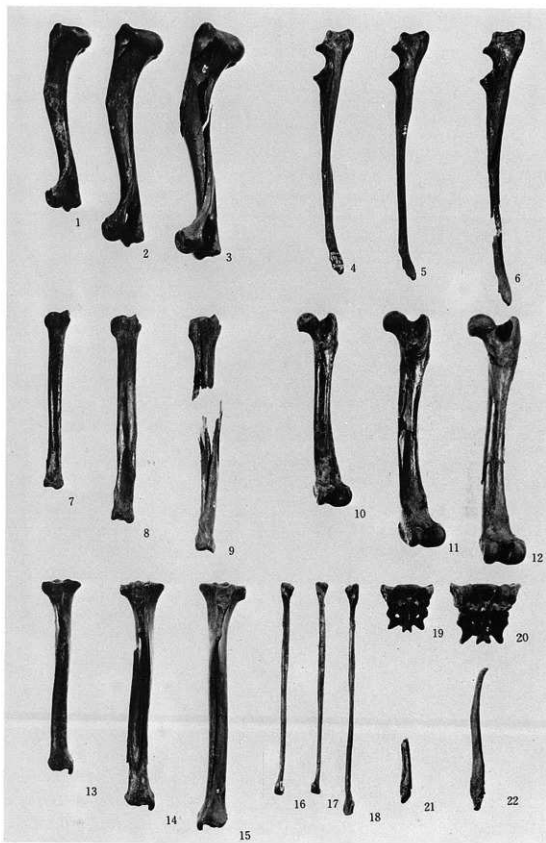
a. カラスの上腕骨・尺骨・桡骨・脛骨 SD-12出土 (ㄥ)



ウニKM-H5 調査区 SK-17出土 (ㄥ) c. タイ科KM-H4 調査区 SD-19(II)層出土 (ㄥ)



龜井9号犬の頭蓋骨
a. 上面観
b. 側面観
c. 底面観
(14)



1~3 上腕骨、4~6 尺骨、7~9 桡骨、10~12 大腿骨、13~15 胫骨、16~18 腓骨
 19~20 仙骨、21~22 陰莖骨
 亀井1号犬(3・6・9・12・15・18・22) 亀井2号犬(2・5・8・11・14・17・20)
 亀井8号犬(1・7・10・13・19・21) 亀井9号犬(4・16)



1/4

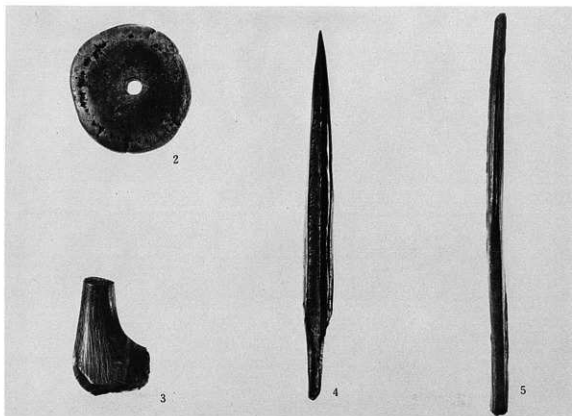
1



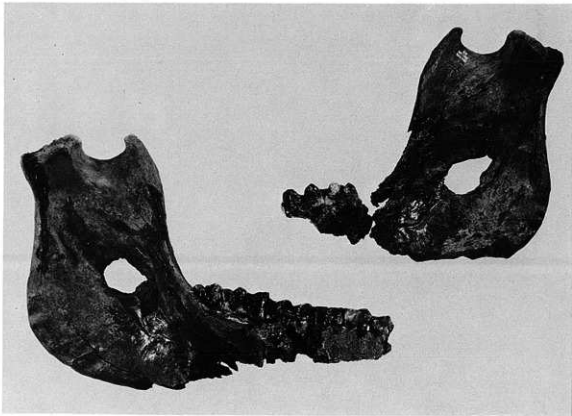
1/4

1

1. 鹿角製ハンマー (第253図1)

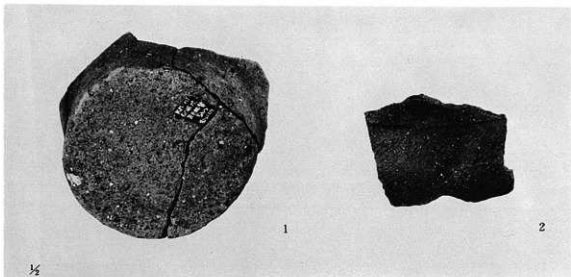


2. 鹿角製紡錘車(第254図2)、3. 鹿角製の針未製品(第254図3)、4. 鹿骨製ヤス(第254図4)、5. 骨製棒状加工品(第254図5) (3)

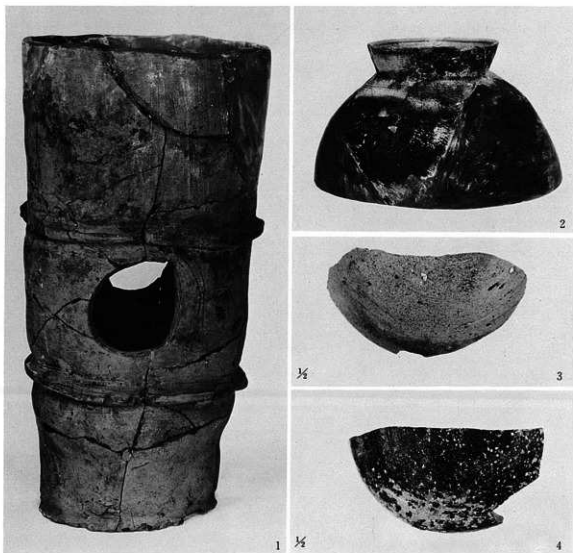


イノシシ下顎骨祭祀 KM-H4調査区SD-20出土 下顎枝に粗孔を穿つ (3)

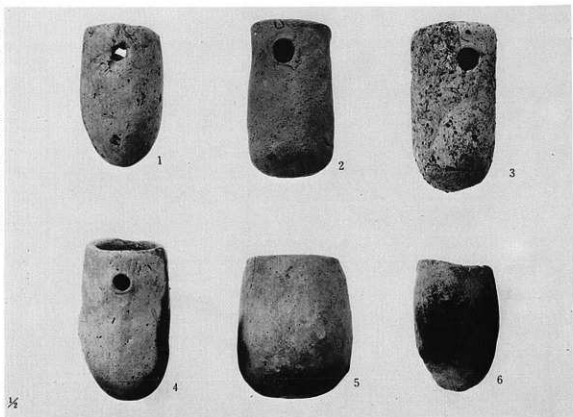




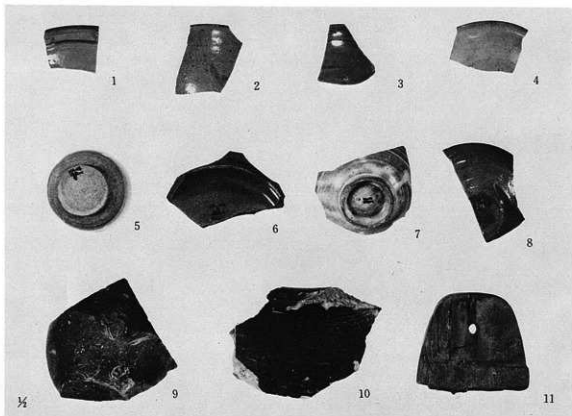
a. 縄文時代後期・晩期 1. KM-H 1 調査区第X b層(第9図) 2. KM-H 7 調査区SD-26



b. 古墳時代 1. KM-H 7 調査区第V層下位(第150図1) 2. KM-H 7 調査区第VI層(第150図2)
3. KM-H 7 調査区第V層上位(第150図3) 4. KM-H 5 調査区第V層(第115図)



1. KM-H 3 調査区 SD-12出土 (第34図)
2. KM-H 7 調査区 SD-11出土 (第147図11)
3. KM-H 7 調査区 I・0 地区第Ⅸ層出土
4. KM-H 調査区
5. KM-H 4 調査区 SK-05 (Ⅲ)層出土 (第37図6)
6. KM-H 7 調査区 SD-11出土



- 1 (第76図11)
- 2 (第76図4)
- 3 (第76図10)
- 4 (第76図9)
- 5 (第76図1)
- 6 (第76図3)
- 7 (第76図5)
- 8 (第76図2)
- 9 (第76図6)
- 10 (第76図12)
- 11 (第76図13)

