



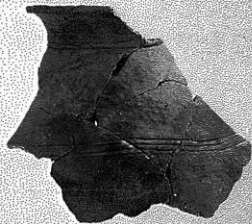
1



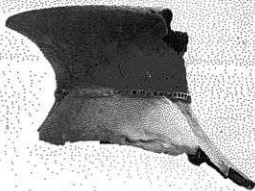
2



3



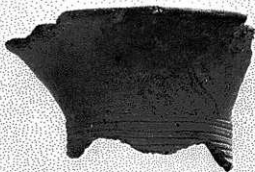
4



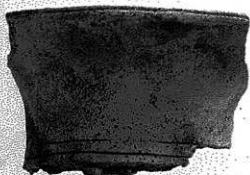
5



6



8



9



17



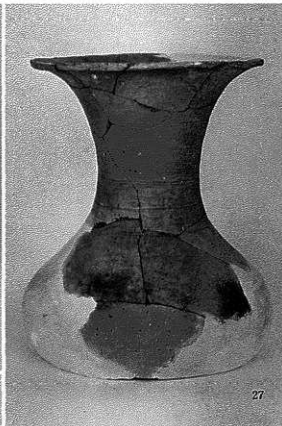
16



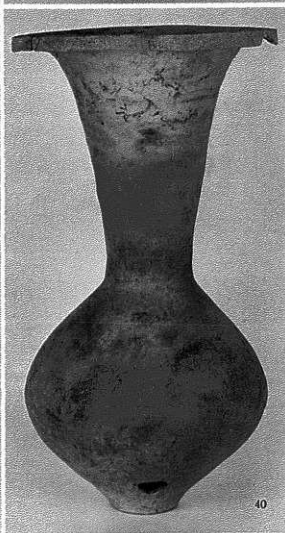
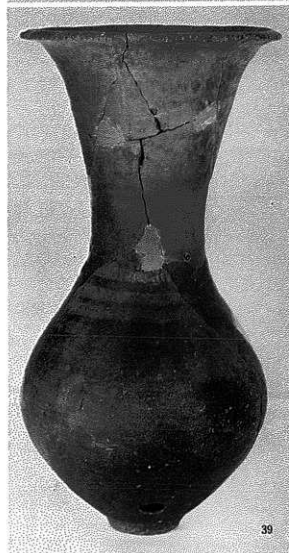
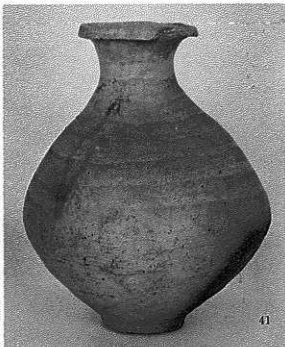
23



25









37



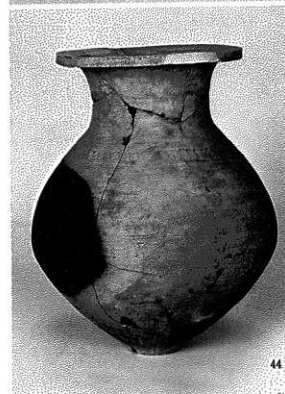
38



43



50



図版六四 弥生時代中期遺物 土器



78



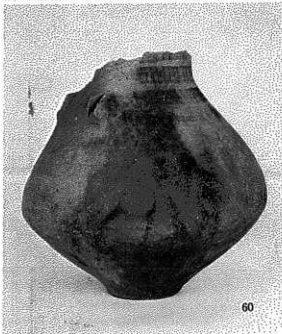
57

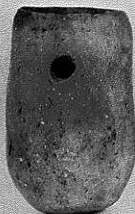


55



58



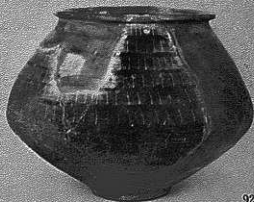




87



89



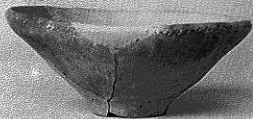
92



96



98



100



95



94



97



101



104



105



112



113



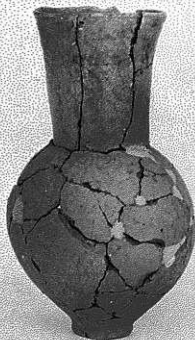
117



115



114



119



122



120



121



126



125



123



124



130



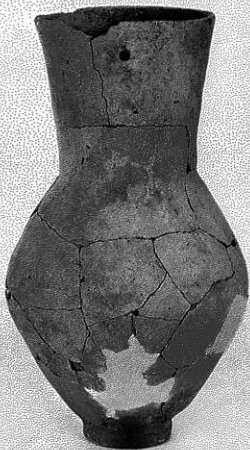
131



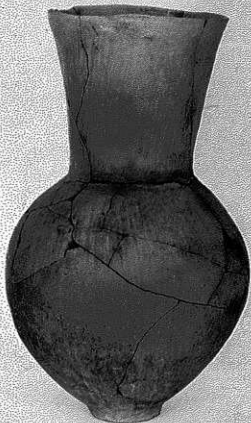
127



129



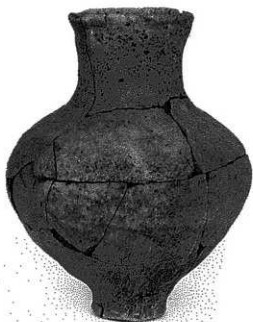
128



132



133



134



137



136





146



144



148



151



149

150



152





160



161



171



159



174



173



177



176



179



178



185



183



187



186



195



197



198



188



189



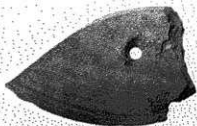
203



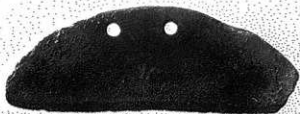
201



202



206



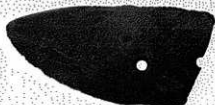
213



208



212



207



210



209



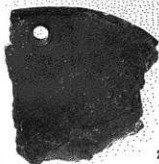
211



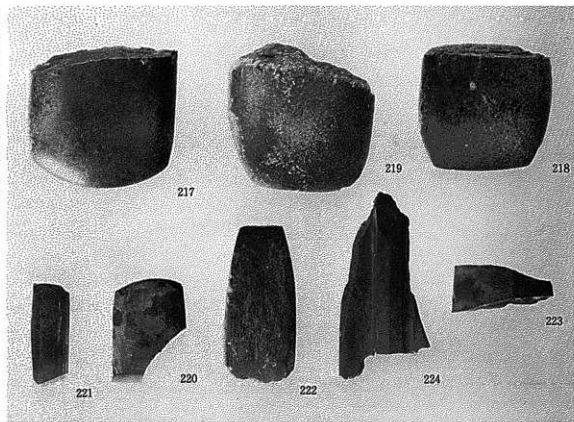
216



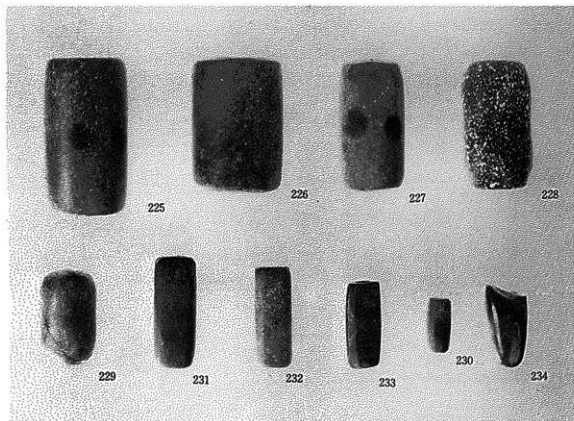
214



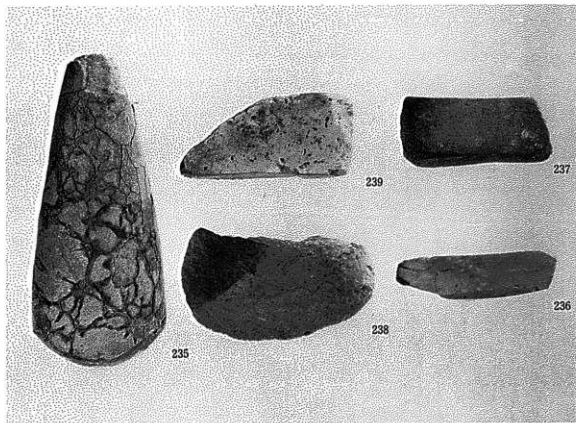
215



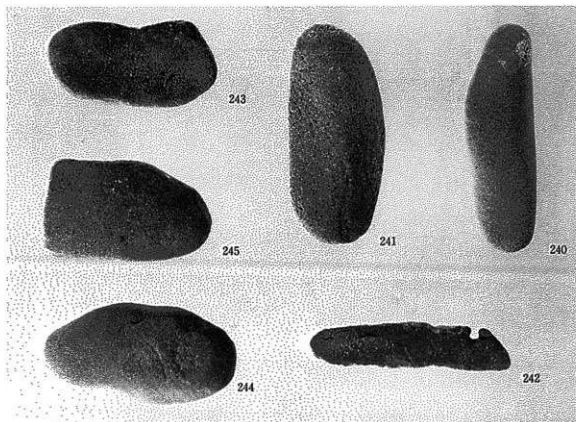
磨製石斧(217~222)、磨製石剣(223・224)



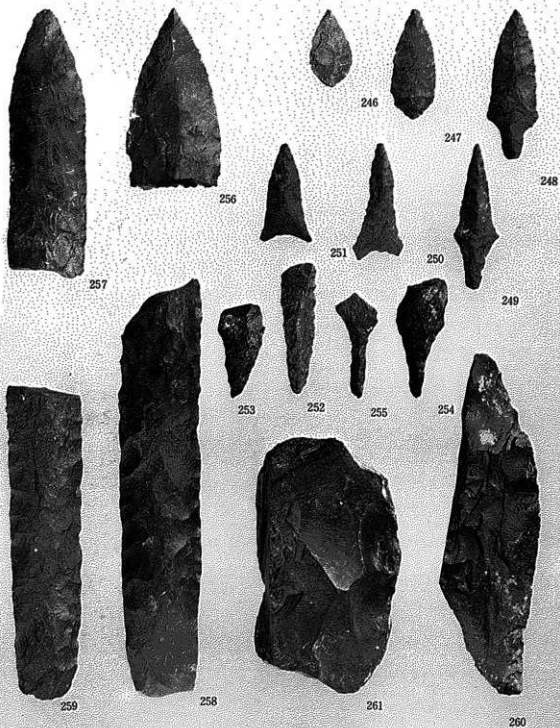
磨石(225~234)



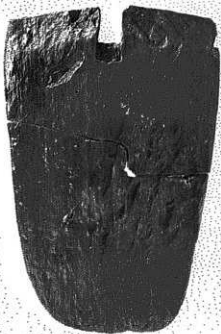
用途不明石器(235)、砥石(236~239)



叩石(240・241)、調整石器(242~245)



石鏃(246~251)、石鏃(252~255)、石槍(256~259)、石核(260・261)



262



264



263



265



266



267



268



271



271
のdetail



272



269



275



276



273



274



279



278



277



283



284



280



S K 3060—着柄鋤または鍬(277)、広鍬(278)、広鍬未製品(279)
太型鍬刃石斧の柄の未製品(280)、棒状木製品(283・284)



281



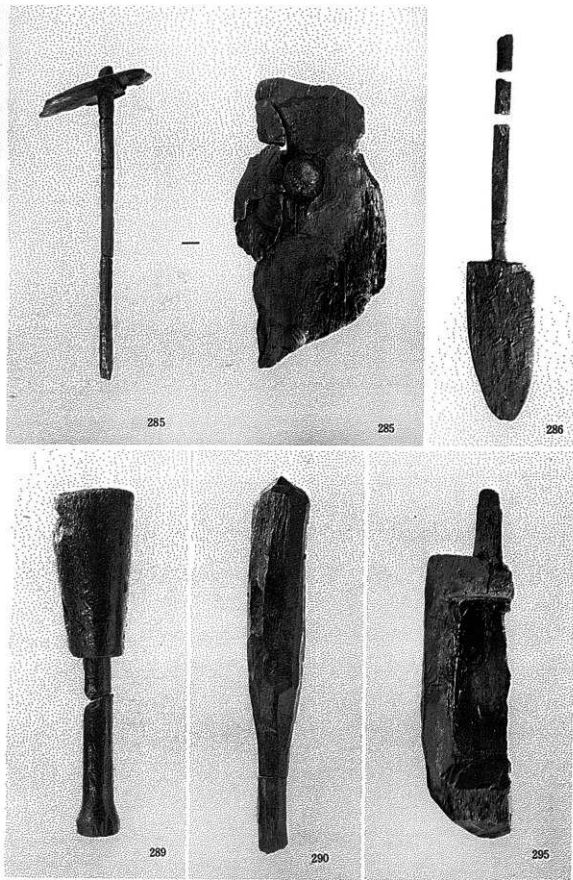
282



287



288



S D 3008—広楯(285)、鋤(286)、砧(289)、棒状木製品の未製品(290)、取手付容器の未製品(295)



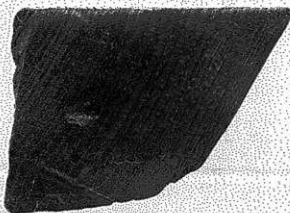
296



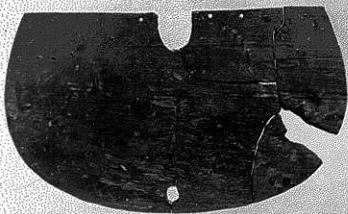
292



294



293



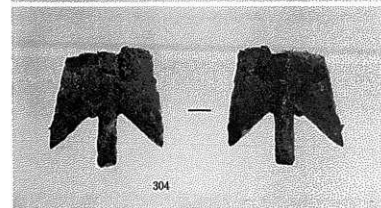
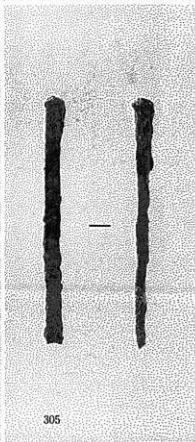
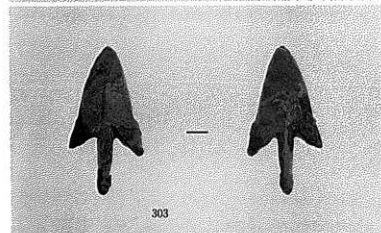
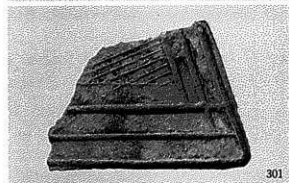
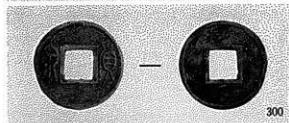
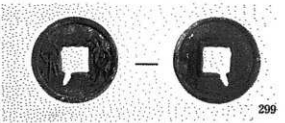
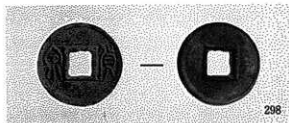
291



270



297



貨泉(298~300)、銅鐸片(301)、銅鏡(302)、銅鏃(303・304)、鉄製鏃(305)



306



307



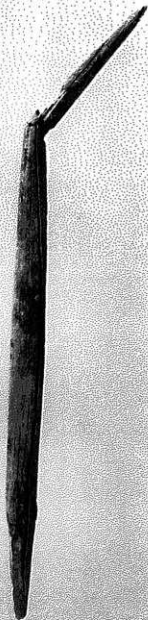
312



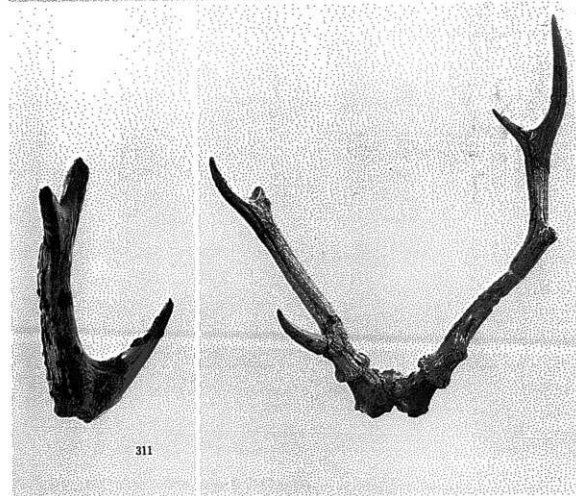
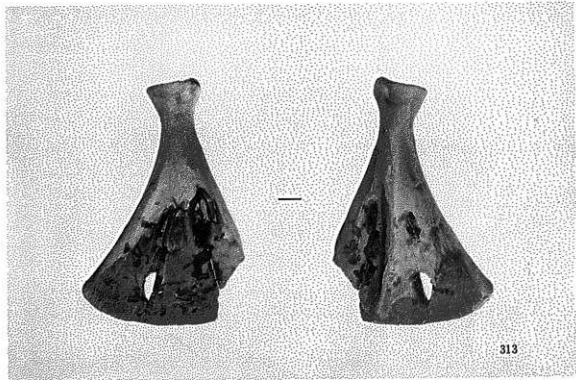
308



309

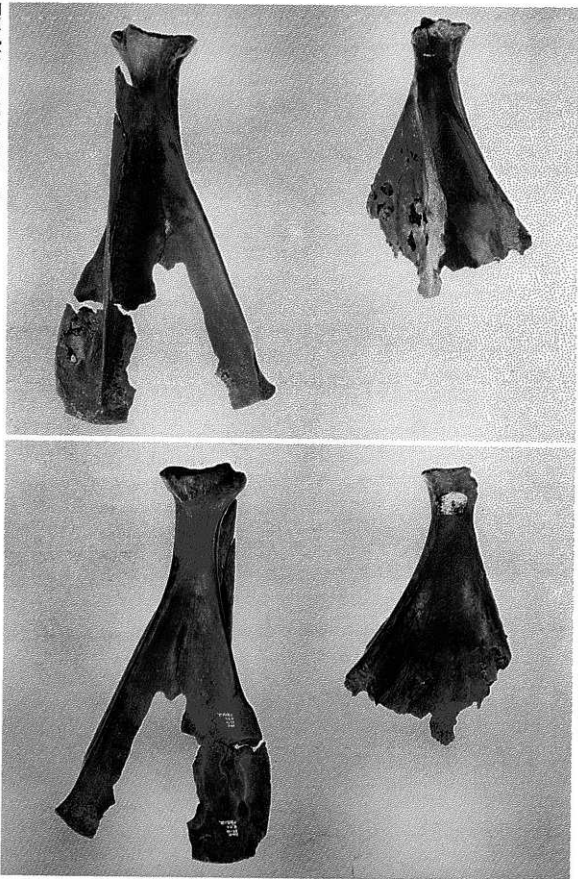


310

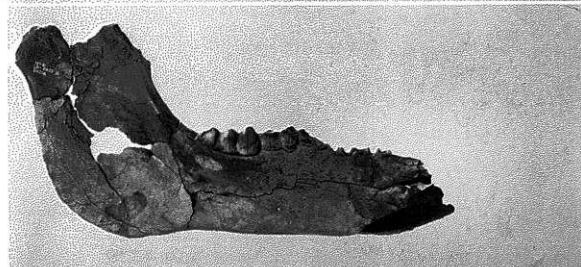
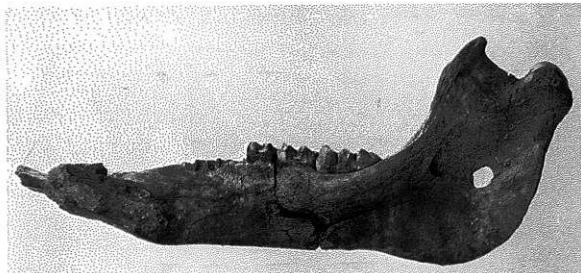


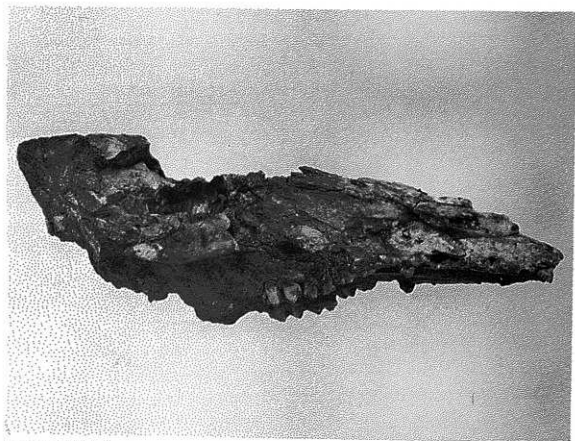
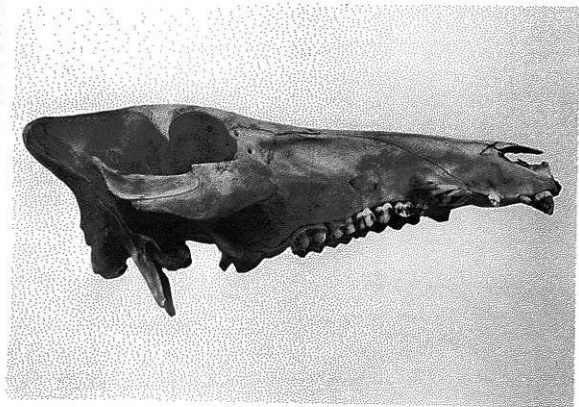
卜骨(313)、鈎状骨角器(311)、鹿角

図版九六 弥生時代遺物 卜骨

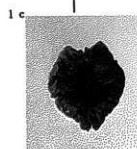
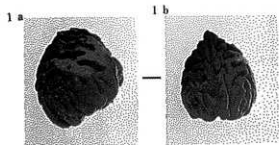


S K 3060

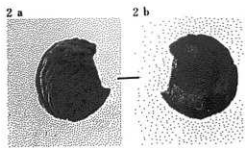




イノシシ頭部(横から)



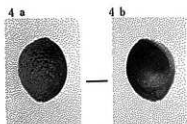
1 a, b, c
 底部が欠失している
 モモの核 (×1)
 欠失部分はかじり痕
 の可能性大



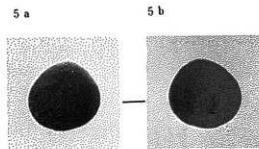
2 a, b かじり痕のあるモモの核 (×1)



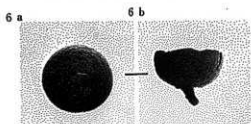
3 トチノキの種皮 (×1)



4 a, b 半分におれたウメの核 (×1)



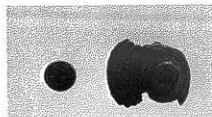
5 a, b 半分におれたヤブツバキ果実 (×1)



6 a, b コナラ亜属の殻斗 (×1)



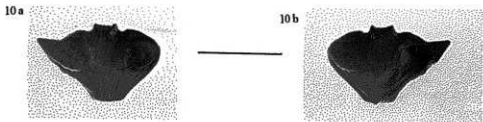
7 不規則に横断されたヤブツバキ (×1)



8 アカガシ亜属の殻斗, 左幼果の殻斗 (×2)



9 エノキ内果皮 (×1.25)



10a, b ヒシ (2角, 1つの角は丸くなり奇形) (×1)



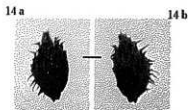
13 バラ属 (×1)



11 バラ属のトゲ (×3)



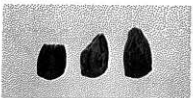
12 ヒョウタン仲間 (×1)



14a

14b

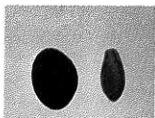
14a, b オナモミ (×2)



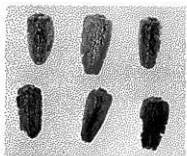
15 ヒョウタン仲間先端欠失 (×1)



16 エゴノキ (×1)



17 カラスウリ属、マクワウリの仲間 (×1.75)



18 タカサブロウ (×7)



19 虫糞 (×2.5)



20 虫糞 (虫こぶ) (×1.25)

亀 井

近畿自動車道天理～吹田線建設に伴う
埋蔵文化財発掘調査概要報告書

昭和58年10月29日発行

編集著作 財団法人 大阪文化財センター
発行者 大阪市東区蒲生2丁目10番28号

印刷所 株式会社 中島弘文堂印刷所
大阪市東区深江南2丁目6番8号



THE
RECORDS OF THE
OFFICE OF THE
SECRETARY OF THE
NAVY
FOR THE YEAR
1880
AS PUBLISHED BY
THE GOVERNMENT
PRINTING OFFICE
WASHINGTON
1881

