



3



11



6



16



17



14



19



23



24



25



41



45



43



50



51



53



57



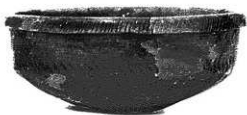
58



77



93



116



100



119



105



133



126



134



127



144



132



145



148



153



125



166



161



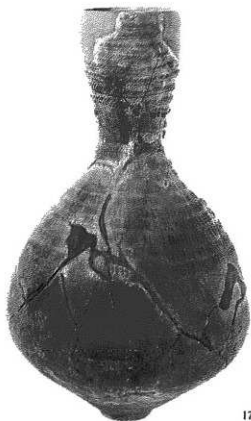
168



169



177



179



178



180



191



195



210



198



215



196



216



222



669



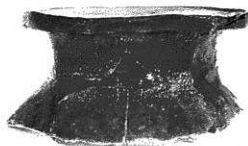
223



667



224



670



233



673



694



679



677



680



666



675



689



721



691



707



705



720



236



243



240



247



254



269



314



287



258



302



263



295



316



315



317



318



278



340



369



381



382



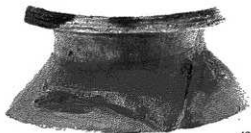
368



383



403



420



409



432



431



413



414



428



444



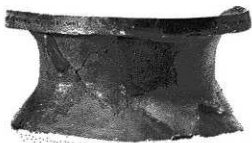
484



446



487



449



460



497



539



517



530

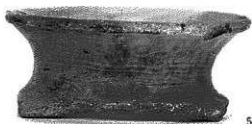


540



528





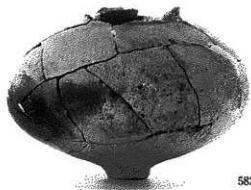
585



589



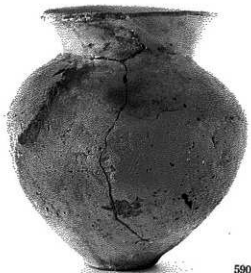
587



582



591



590



603



604



601



597



595



620



594



622



606



624



613



610



609



625



628



626



635



633



638



857



858



846



852



875



877



874



878



873



880



871



884



888



885



869



872



896



891



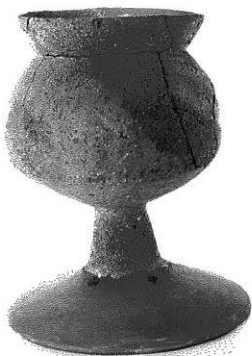
892



894



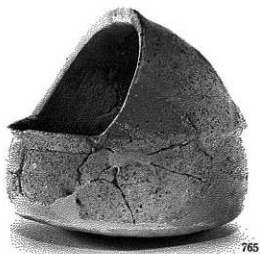
895



833



731



765



738



766



759



756



764



770



777



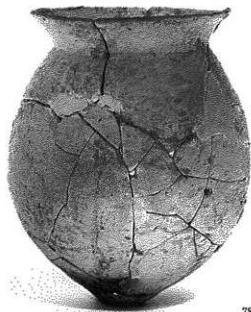
767



776



771



780



782



807



788



809



792



813



814



665



816



642



824

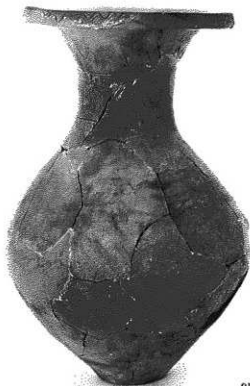


825





903



910



909



913



919



916



923



922



925



971



956



966



967



970



972



973



978



981



983



988



989



984



986



994



990



997



999



998



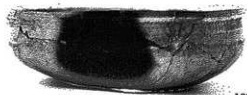
1002



1003



1011



1037



1019



1019

1020



1020



1025



1026



1028



1031



1044



1038



1047



1057



1061



1059



1054



1068



1067



1069



1073



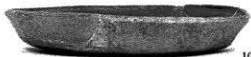
1075



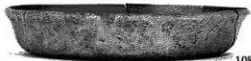
1077



1076



1081



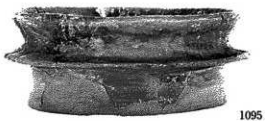
1083



1081

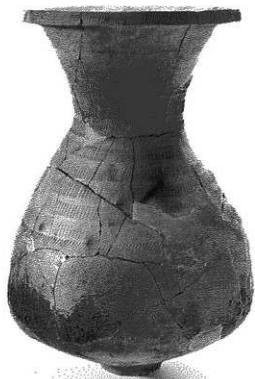


1083





1146



1235



1173



1209



1195



1134



1115



1177



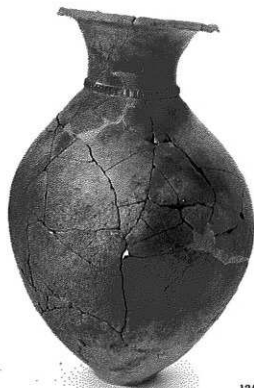
1186



1175



1218



1249



1190



1141



1238



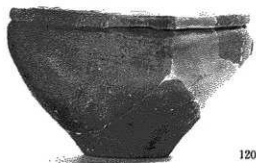
1136



1257



1135



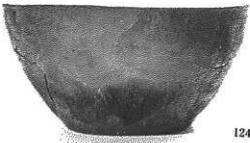
1201



1119



1222



1240



1128



1151



1254

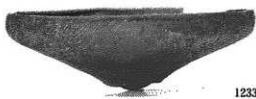


1144

土城 169(1119)、溝 111(1128)、大溝(溝 201) (1144)、第15号墓(1151)、第21号墓(1201·1222)、
第22号墓(1240)、弥生时代中期Ⅱ包含層(1254)



1241



1233



1239



1140



1130



1122



1256



1131



1253



1258

弥生時代中期Ⅰ包含層(1131)、同中期Ⅱ包含層(1253・1256)、同後期包含層(1258)



1262



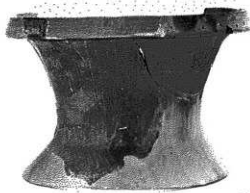
1263



1299



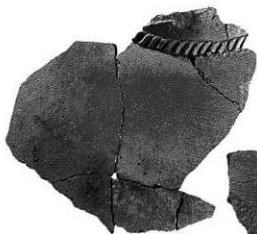
1267



1285



1266



1297



1261



1308



1289



1314



1272





1277



1276



1275



1274



1290



1281



1320



1317



1288



1313



1311



1283



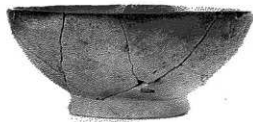
1283
1284



1284



1321



1324



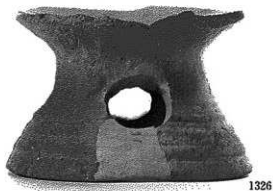
1322



1363



1334



1326



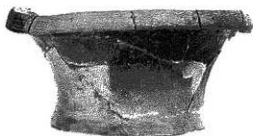
1332



1339



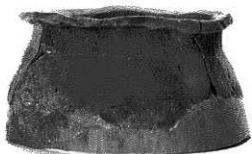
1351



1353



1357



1340



1355



1361



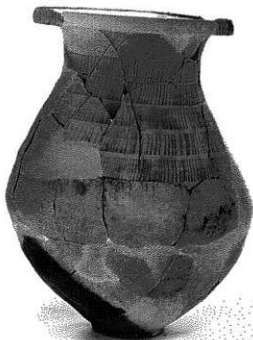
1401



1402



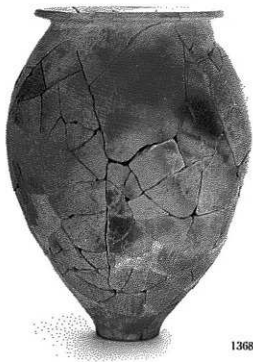
1439



1423



1483



住居址 I (1368・1369)、建物 4 (1382)、溝 (1392)、土壙 196 (1435)、弥生時代中期 II 包含層 (1480)



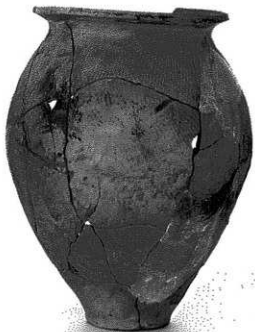
1413



1427



1414



1406



1373



1440



1493



1494



1490



1488



1489



1491



1499



1509



1503



1505



1498



1504



1496



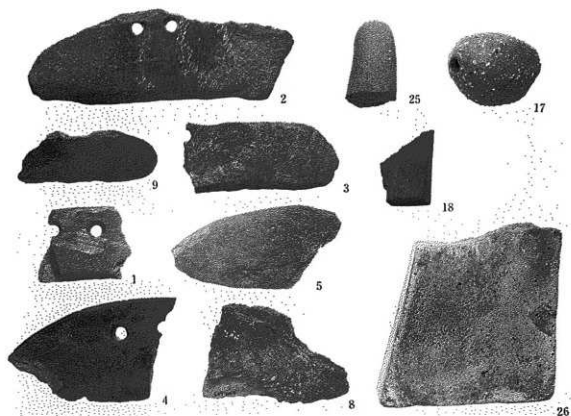
1501



1497

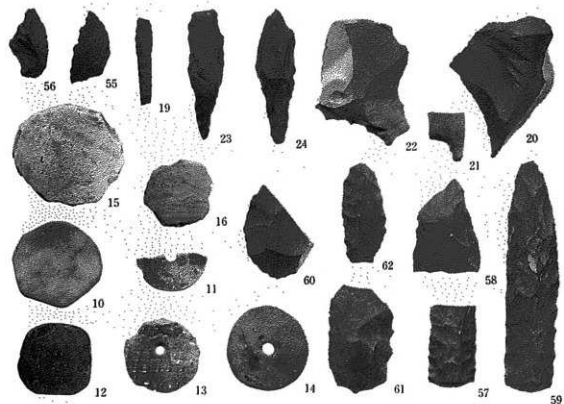


1500



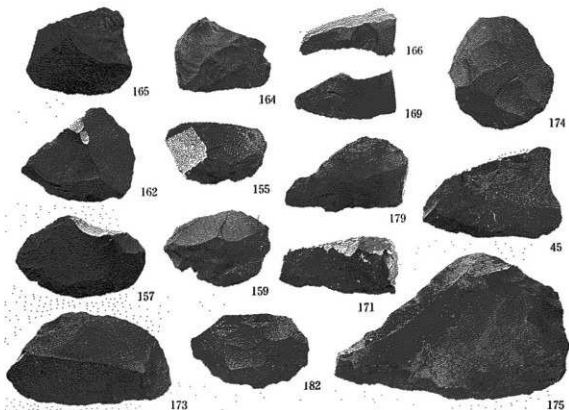
石庖丁・叩き石・土錘・扁平片刃石斧・砥石

約1/4



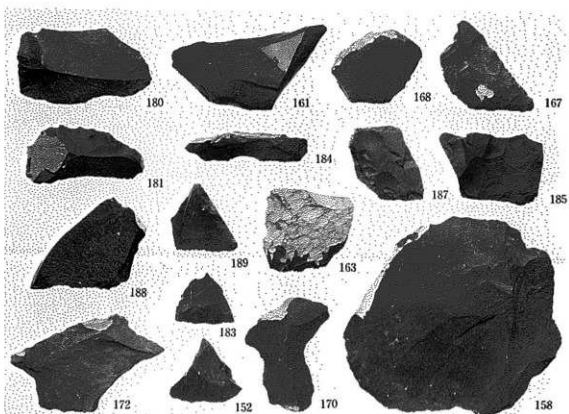
石鎌・石錘・石槍・土製門板・紡錘車

約1/4



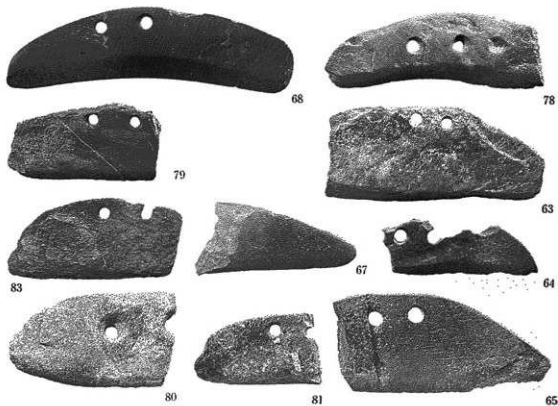
不定形刃器

約長



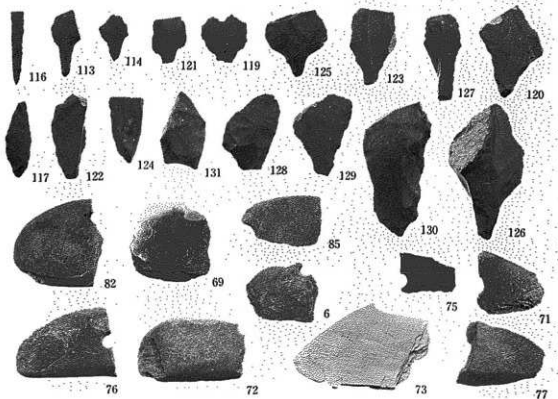
不定形刃器

約長



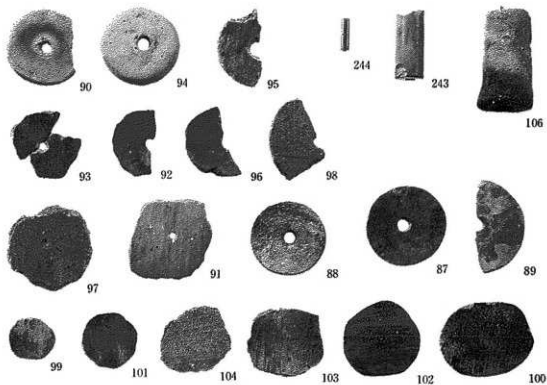
石斧丁

約4



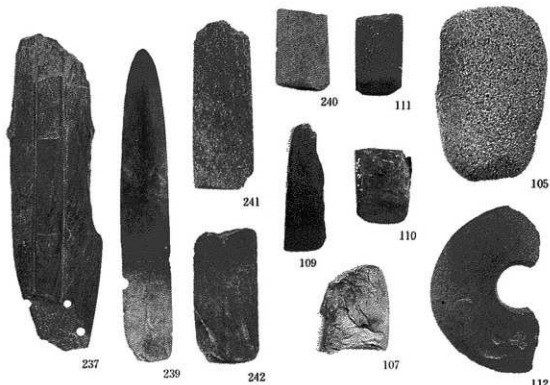
石鏃・石斧丁

約4



紡錘車・土製円板・管玉・土鍾

約尺



石剣・扁平片刃石斧・柱状片刃石斧・環状石斧・石鍾

約尺



150



144



151



148



147



149



141



142



143

砥石

約4



134



135



139



136



137



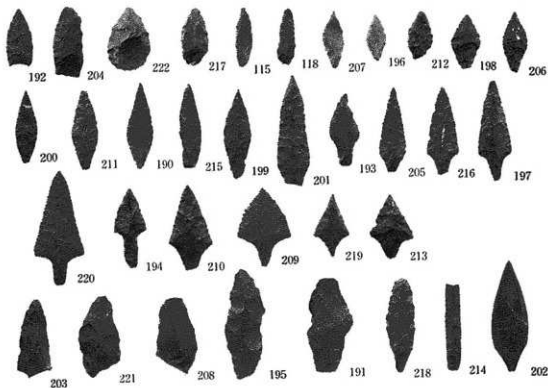
138



140

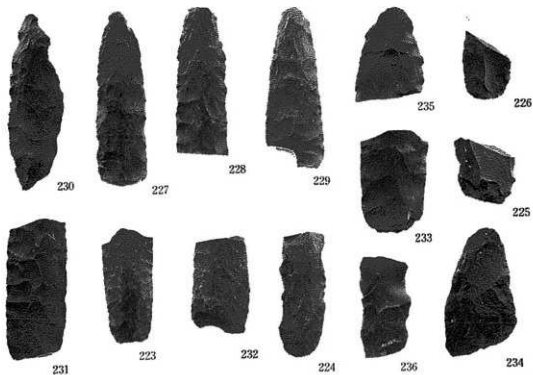
叩き石・凹み石・磨石

約4



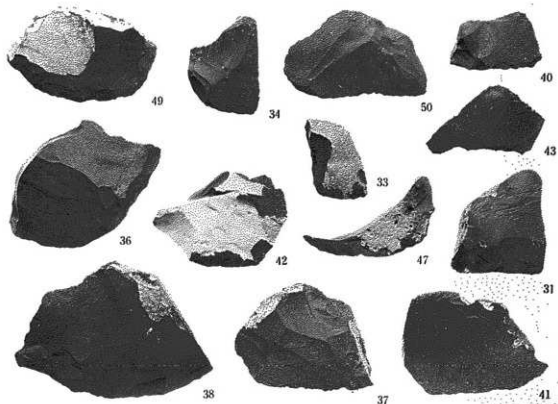
石鏃

約尺



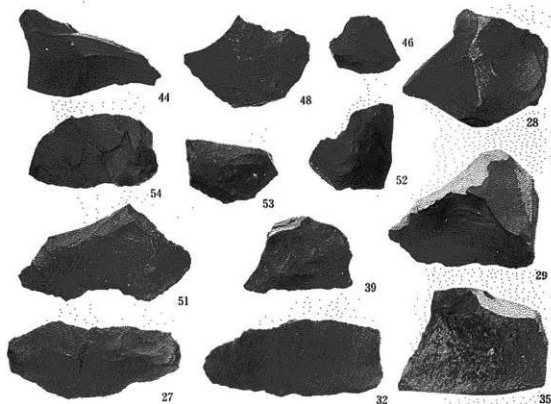
石槍

約尺



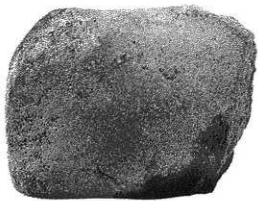
不定形刃器

約片

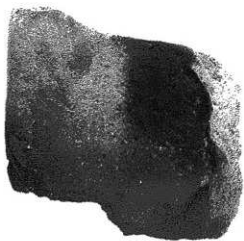


不定形刃器

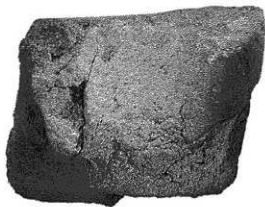
約片



|



—



|





253



254



251



252



255



247



256



257



249



258



250

石庖丁

約長



302



298



301



299



267



266



270



304



296



295



294



271



268



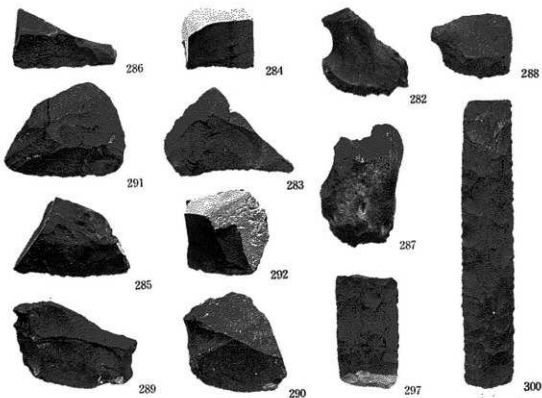
269



303

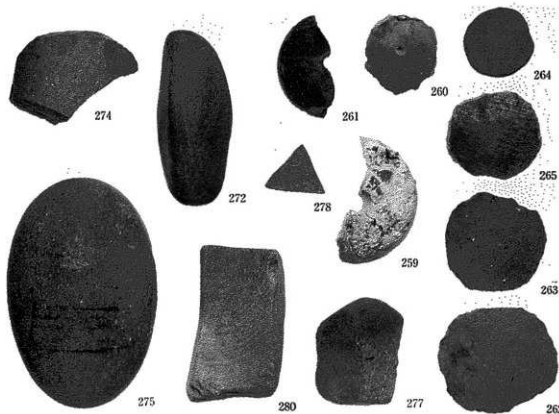
石劍・石戈・石鏃・石鏃

約長



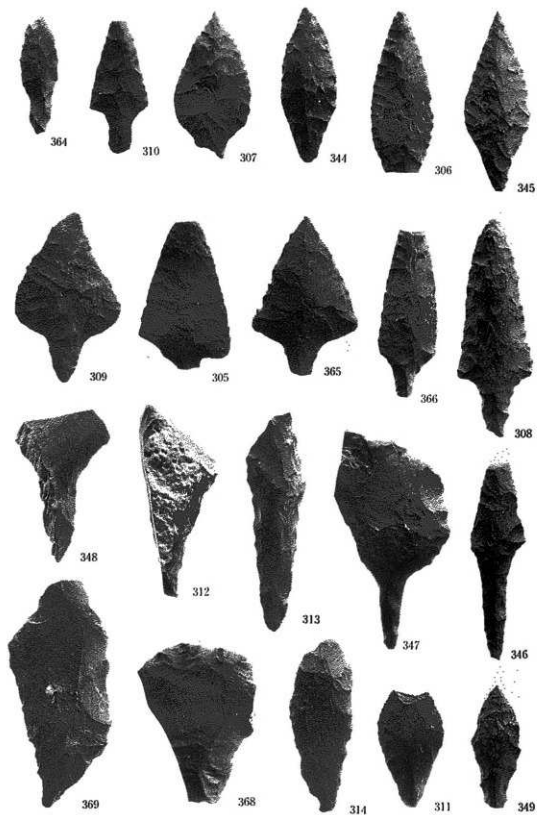
不定形刃器・石槍

約4



叩き石・凹み石・砥石・紡錘車・土製門板

約4





332



331



335



336



333



334



319



320



318



350



351



317



316



315



375



322



321

柱状片刃石斧・扁平片刃石斧・太型始刃石斧

約3/4



379



357



359



358



361



380



362



360

砥石・投弾・使用痕のある石

約1/4



330



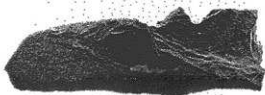
324



376



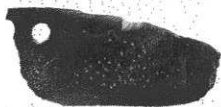
328



327



325



329



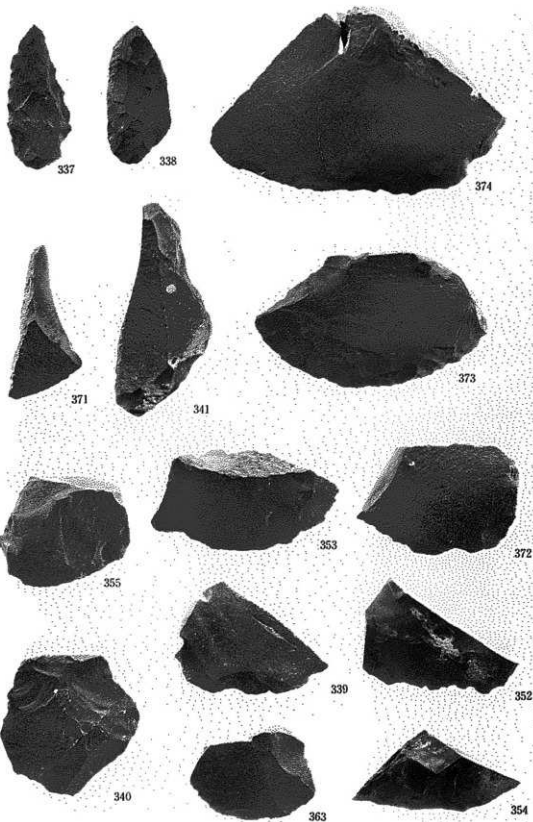
326

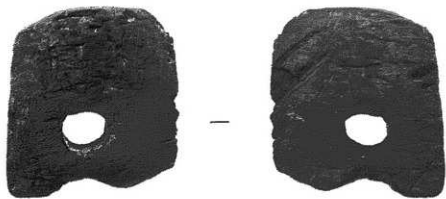


356

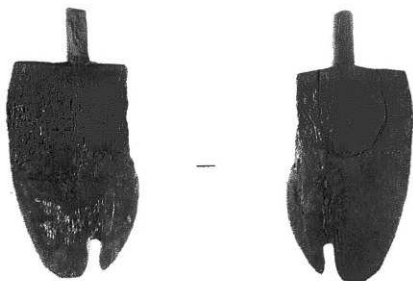


323

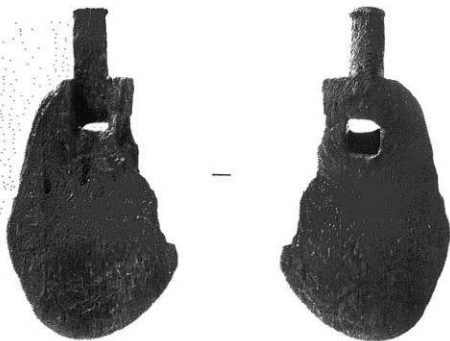




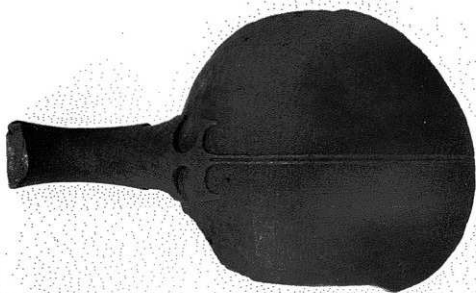
W-1



W-6



W-4

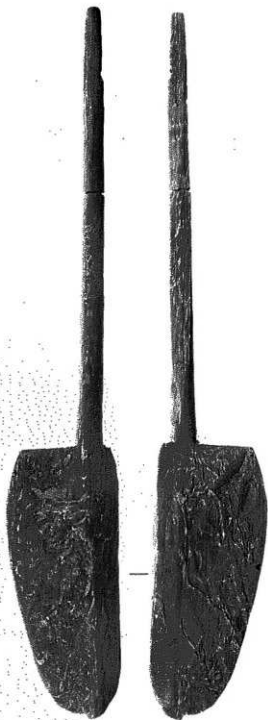




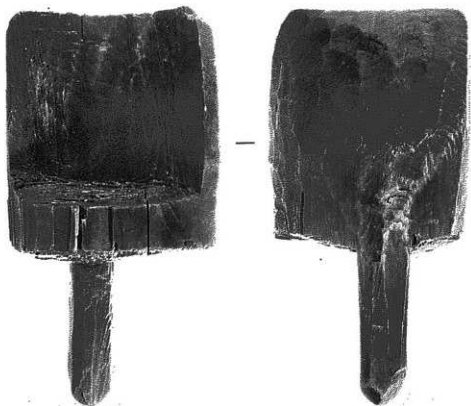
W-3



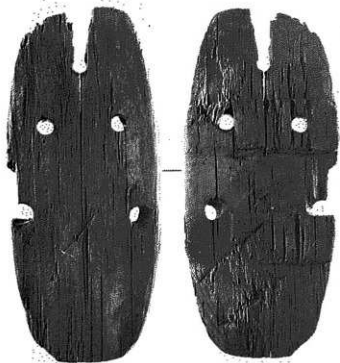
W-5



W-7

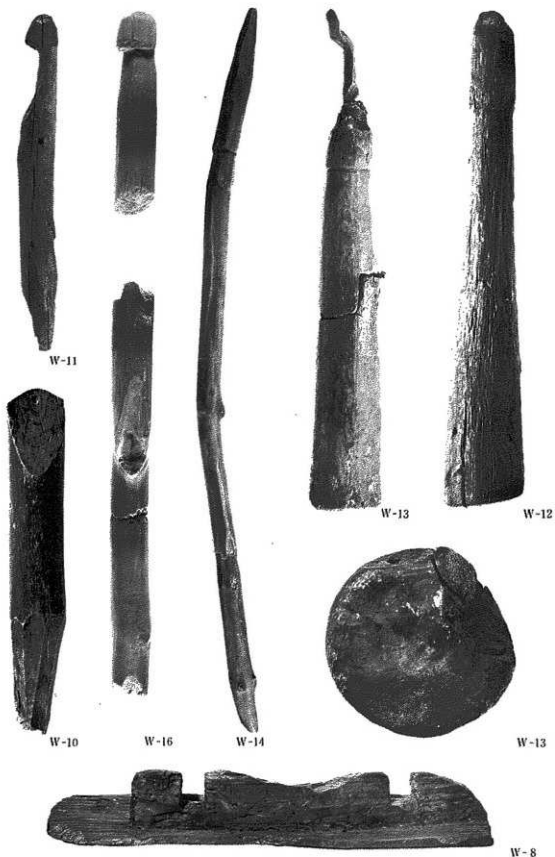


W-15

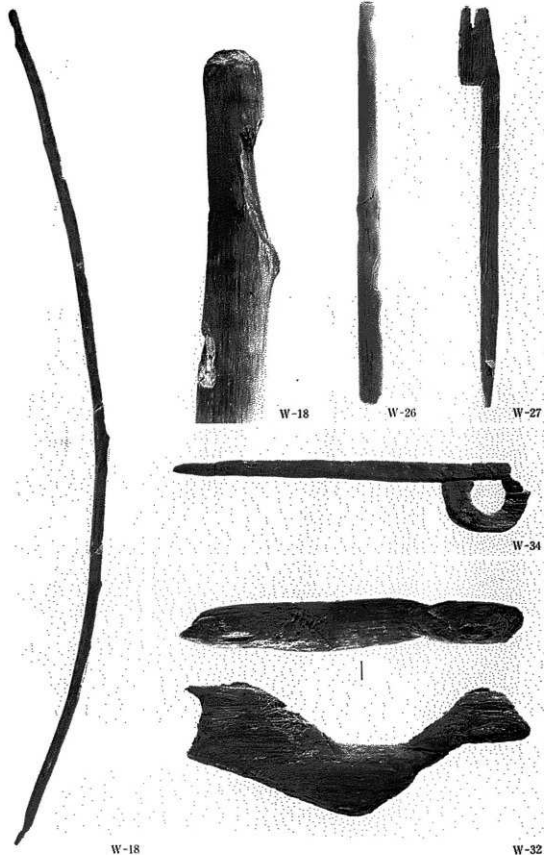


W-17





弥生時代中期Ⅱ W-8・10・11 用途不明木製品、W-12・13 杵、W-14 用途不明木製品
弥生時代後期Ⅱ W-16 用途不明木製品



弥生時代中期 W-18 弓、弥生時代中期Ⅰ W-26・27 用途不明木製品
弥生時代中期Ⅱ W-32 鳥形木製品、W-34 用途不明木製品



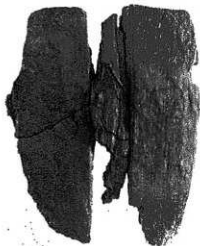
W-21



W-19



W-20



W-22

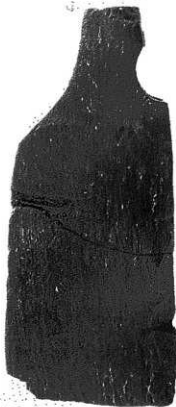


W-37

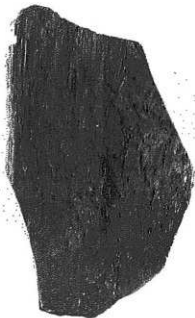
弥生時代中期Ⅰ W-19・21 又鋤、W-20 田下駄、W-22 鋤
弥生時代中期Ⅱ W-37 鋤



W-30



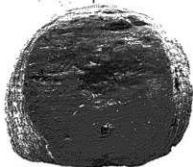
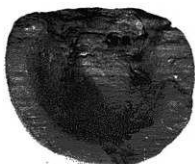
W-24



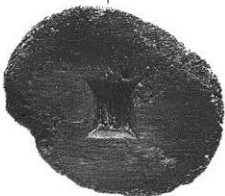
W-33



W-29



W-32



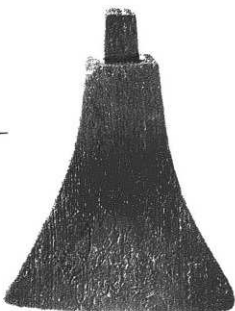
W-25



W-39



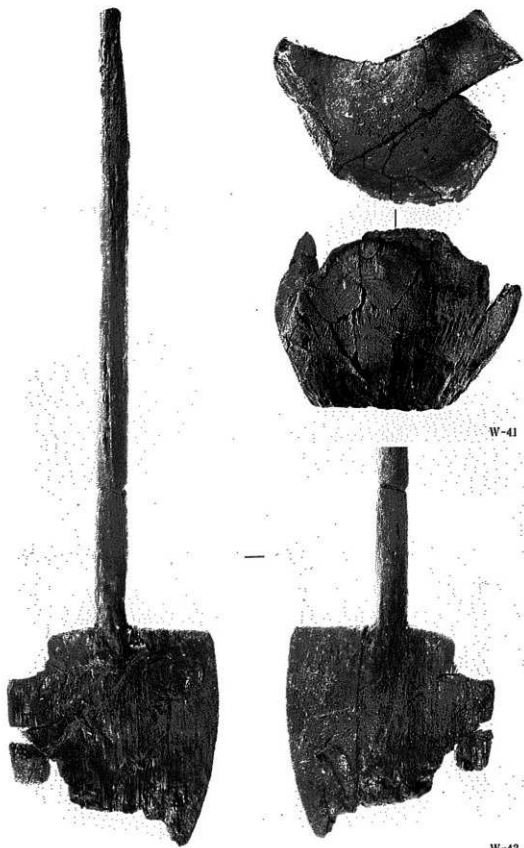
W-40



W-38

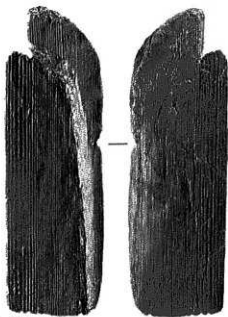
弥生時代中期 I W-25 高杯、W-32 容器

弥生時代後期 I W-38·40 用途不明木製品、弥生時代後期 II W-39 柄

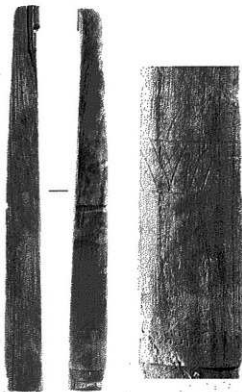


W-41

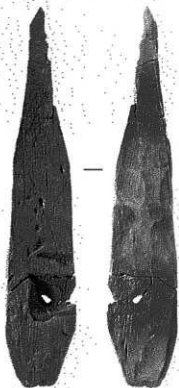
W-42



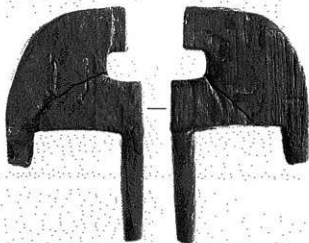
W-44



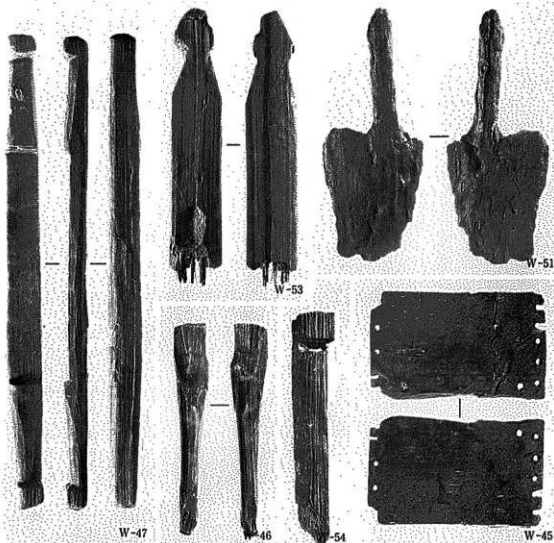
W-43



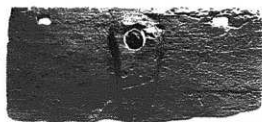
W-48



W-49



弥生時代中期 W-47 紡織具(ちまき)、W-51 鋤先、W-45・46 不明木製品、W-53・54 板状木製品、
W-56 木棺小口板



W-57



W-58



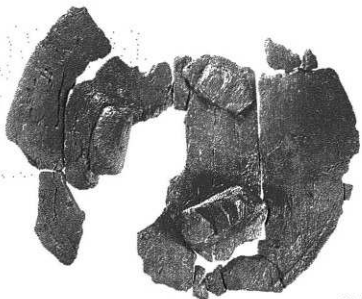
W-59



W-60



W-63



W-62

古墳時代初頭 W-57 えらり、W-58 靴状木製品、W-59・60 櫛、W-62 三脚盤、W-63 板状木製品



W-64



W-66



W-68



W-69



W-67

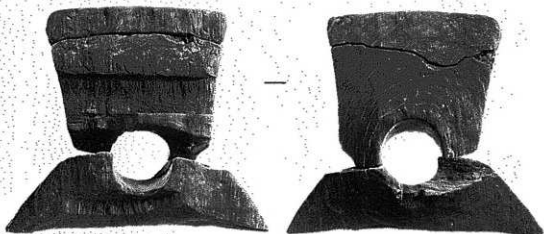


W-70

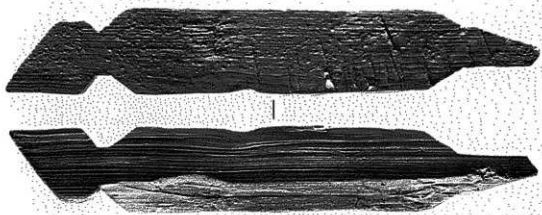
弥生時代中期 W-64 朱彩用途不明板状木製品、W-66・67 不明木製品、W-68 紡織具(ちきり)、W-69 木剣
弥生時代後期～古墳時代初頭 W-70 烏彩木製品



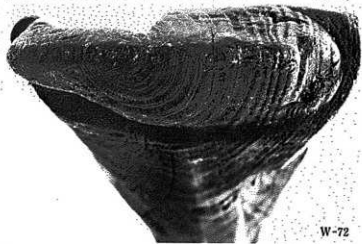
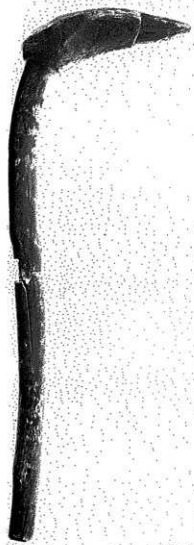
W-69



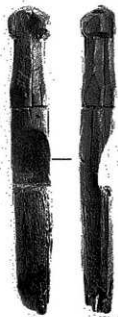
W-71



W-73

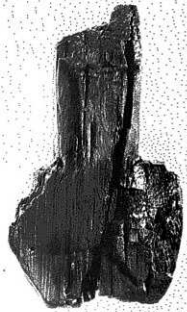


W-72



W-72

W-74



W-75

弥生時代後期 W-72 手斧の柄、W-73 鳥形木製品、W-74 不明木製品
古墳時代前半 W-75 不明木製品



W-80



W-81



W-82



W-83



W-84



W-85



W-86

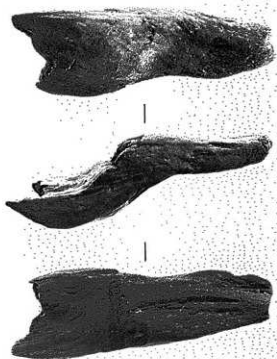


W-87

弥生時代中期 W-82 礎板、W-80・81 不明木製品、W-83~87 柱根



W-79



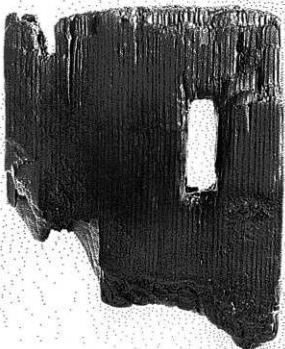
W-77



W-89



W-90

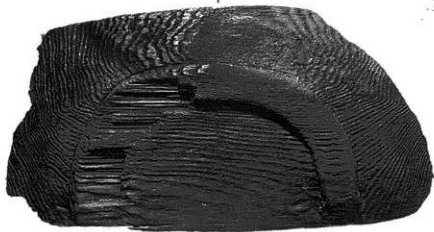


W-78

弥生时代前期 W-90 不明木製品 弥生时代中期 W-89 鏃先
弥生时代后期 W-77 匙、W-79 広楫、W-78 不明木製品



W-88



W-76

