



SJ01-9



SJ01-15



SJ03-2



SJ04-2



SJ04-3



SJ06-1



SJ06-7



SJ06-12



SJ06-3



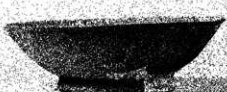
SJ08-4



SJ08-5



SJ08-7



SJ10-6



SJ08-9



SJ08-10



SJ08-11



SJ08-12



SJ10-1



SJ11-6



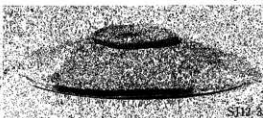
SJ11-7



SJ11-8



SJ12-2



SJ12-3



SJ13-3



SJ12-4



SJ13-8



SJ13-10



SJ13-11



SJ13-13



SJ13-15



SJ19-1



SJ19-2



SJ19-4



SJ19-5



SJ20-4



SJ21-1



SJ23-1



SJ29-1



SJ29-2



SJ29-5



SJ29-6



SJ29-7



SE03-1



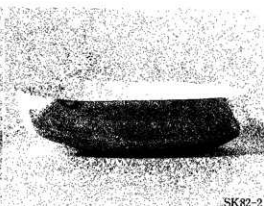
SE01-19



SE01-02



SK92-12



SK82-2



SD22-30



SE08-1



SE06-5



SE06-3



SK92



SS12-2



SE03-6



SE03-4



SE03-3



SE03-7

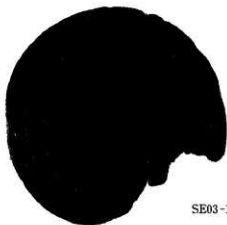


SE03-5



SK185

木器碗



SE03-11



SE03-12



SS02-19



SE10-1



SE07-11

曲物



SS01-3



SS13-2



SS08-2



SK264 2



SS08-1



グリッド-3

白磁・青磁碗 (内面)



SS01-3



SS13-2



SS08-2



SK264



SS08-1



グリッド-3

白磁・青磁碗 (外面)





SS01-2



SD04-7



SK100-5



SD30-1



表採-4



SD22-25

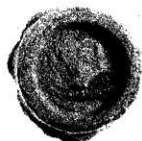
青磁碗 (内面)



SS01-2



SD04 7



SK100



SD30-1

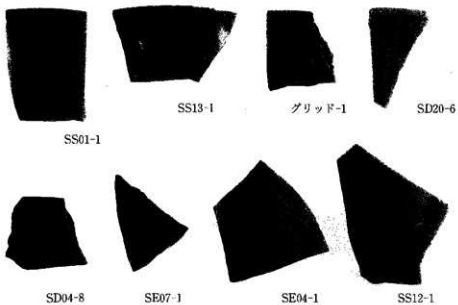


表採 4

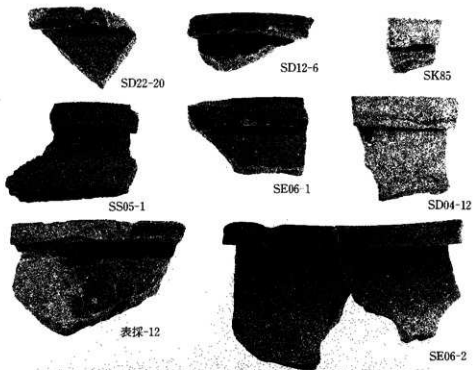


SD22-25

青磁碗 (底部)



青磁碗



常滑壺



SD50-5



SS12-3



グリッド-4



グリッド-5



SD50-2



SS08-4

常帯片口鉢



グリッド-6



SK92



SE7-8



SD50-3

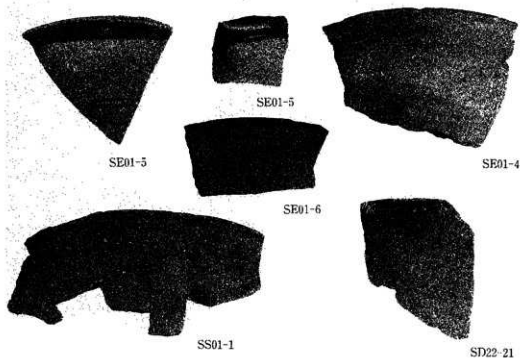


SD22-16

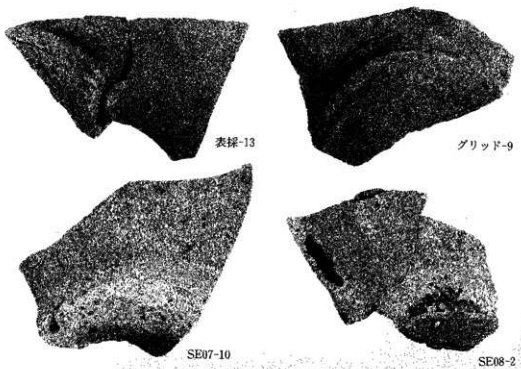


SD30-3

常帯片口鉢



常滑片口鉢



常滑片口鉢



グリッド-11

SD22-28



SE06 7



グリッド-13



SD22-24



SD09-2

瀬戸四耳壺・鉢・備前搦鉢・志野（内面）



グリッド-11

SD22-28



SE06-7



グリッド-13

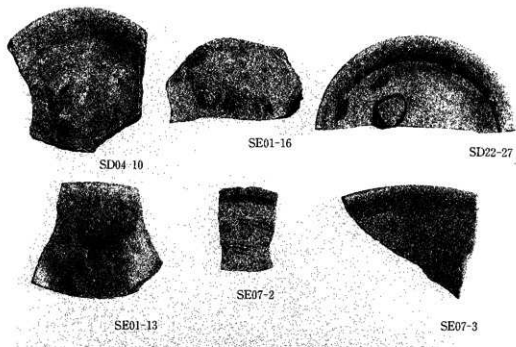


SD22 24

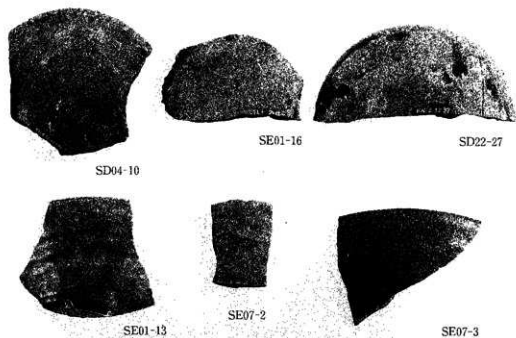


SD09-2

瀬戸四耳壺・鉢・備前搦鉢・志野（外面）



瀬戸皿、鉢、盤 (内面)



瀬戸皿、鉢、盤 (外面)



SS13-3



SD17-5



SD12-14



SD51-9



SS08-7



SD12-13

瀬戸碗 (内面)



SS13-3



SD17-5



SD12-14



SD51-9



SS08-7

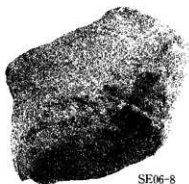


SD12-13

瀬戸碗 (外面)



SE01-8



SE06-8



SS05-2



SE01-9



SS13-6

羽美・瀬戸窯



SS11-1



SD04-9



SE01-18



SE01-20

在地土師製皿





SE01-12



SS07-5



SK32



SD22-50



SD22-48



SK32

在地壘



SE03-18



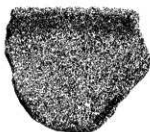
SE03-19



SD22-48



SD12-11



SD22-45



SE03-17

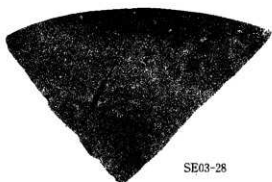
在地内耳鍋



SE06-4



SE06-6



SE03-28

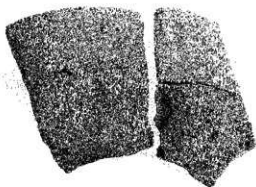


SE03-29

在地片口鉢



SE01-23



SS07-2

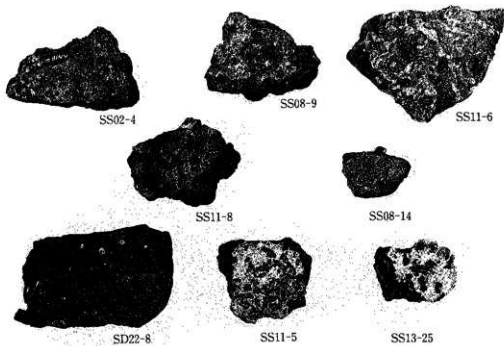


SK92

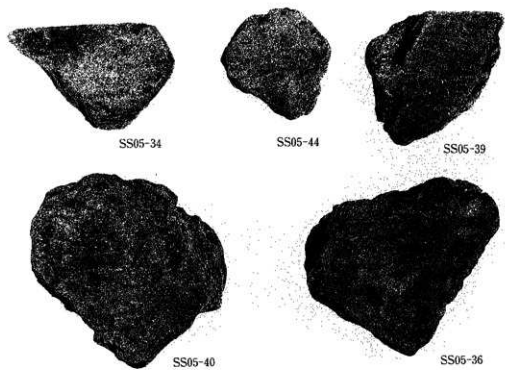


SE07-4

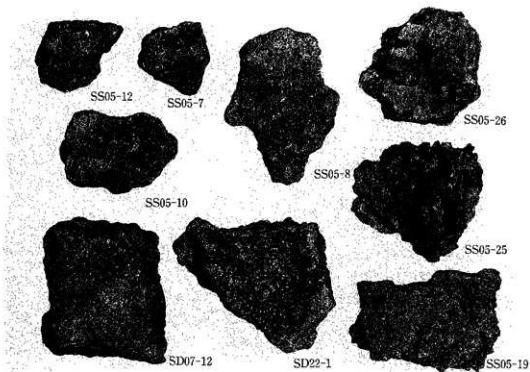
在地片口鉢



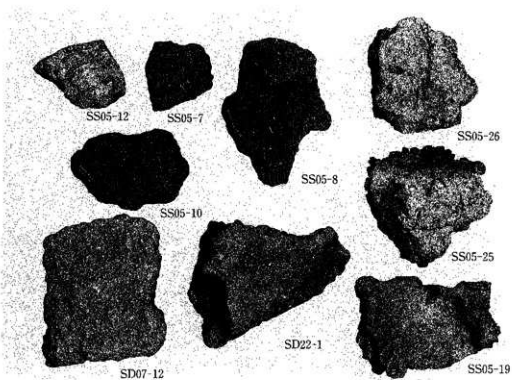
炉壁 (内面: 銅)



炉壁 (内面)



炉壁 (内面)



炉壁 (外面)



SD30-8



SD22-5



SD22-6



SS06-4



SD07-10



SS02-1

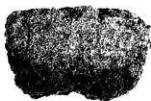
炉壁 (内面)



SD30-8



SD22-5



SD22-6



SS06-4



SD07-10



炉壁 (外面)



SS13-27



SD30-7



SD22-2



SD07-9



SS05-21



SD07-11

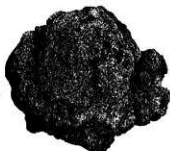
炉壁 (内面)



SS13-27



SD30-7



SD22-2



SD07-9



SS05-21



SD07-11

炉壁 (外面)



SD07-4



SD07-1



SD07-6



SD07-5



SD07-3



SD07-7

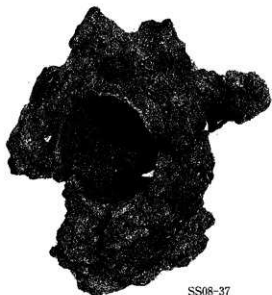


SD07-8



SD07-2

炉壁：クライ



SS08-37



SS13-4



SD22-14



SS01-10



SS05-11



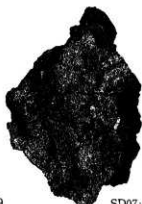
SS08-21



SS02-8



SS08-22



SD07-13



SS05-51



SS08-29

羽口 (内面)



SS01-10



SS05-11



SS08-21



SS02-8



SS08-22



SD07-13



SS05-51



SS08-29

羽口 (外面)



鍋鋳型



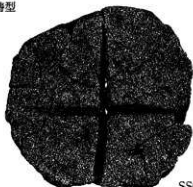
SS01-12

鍋鋳型



金井A区SK160

不明鋳型



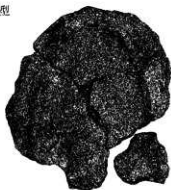
SS05-140

容器鋳型



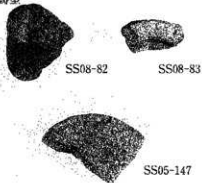
SS01 29

梨先鋳型



SS01-31

容器・鏡鋳型

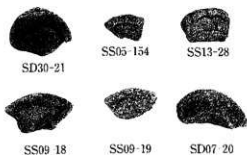


SS08-82

SS08-83

SS05-147

つまみ鋳型



SD30-21

SS05-154

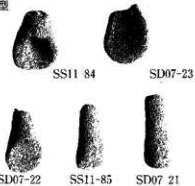
SS13-28

SS09 18

SS09-19

SD07 20

注ぎ口鋳型



SS11 84

SD07-23

SD07-22

SS11-85

SD07 21

図版 98

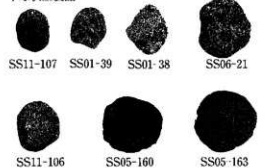
三叉状土製品



三叉状土製品



半球状土製品



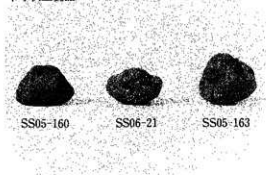
オシキ



スキ先



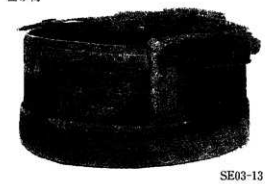
半球状土製品



きぬた

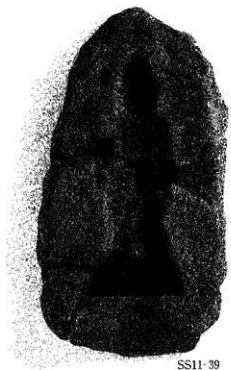


曲げ物



曲げ物





SS11-39



SS11-40

仏像鋳型



SS09-14



SS11-41



SS11-44



SD30-15

仏像鋳型



SS10-7



SS10-8



SS10-9



SS10-10

梵鐘錫型 (陽錫文字)



SS10-110

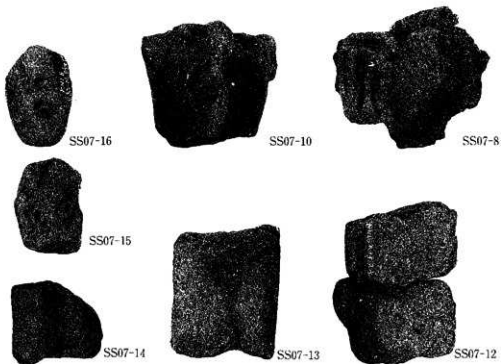


SD22-55

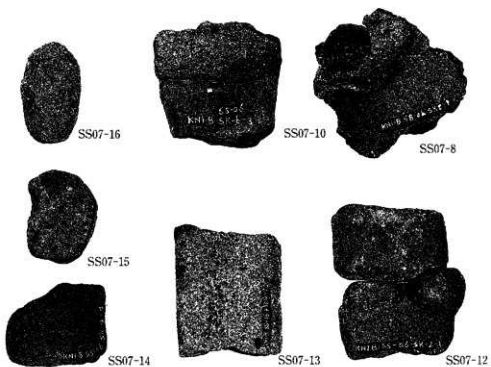


SD22-54

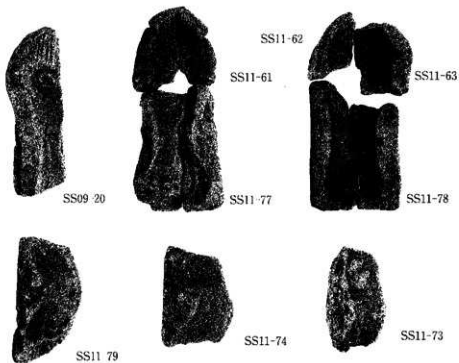
獸脚錫型



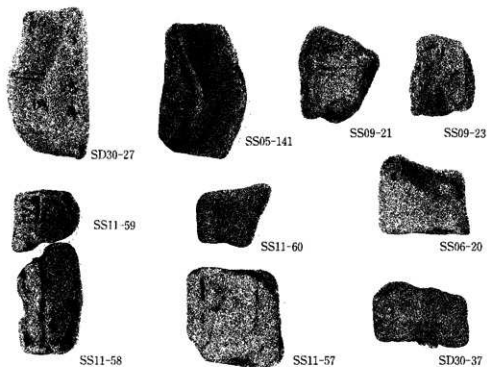
獸腳錫型 (內面)



獸腳錫型 (外面)



獸脚鑄型



獸脚鑄型



SS14-4

SS14-6



SS14-5



SS14-23

SS14-20



SS14-22

SS14-11

SS14-12



SS14-3

SS14-2

容器・獸脚鋳型



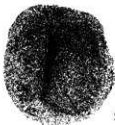
SS11-43



SS05-42



SS05-17



SD30-25

猪足鋳型



SS05-149



SS05-151



SS05-148



SS08-90



SS08-89



SD30-18

飾り金具鋳型



SS11-87



SS11-91



SS11-92



SS11-93



SS11-90



SS11-89



SS11-88



SS11-86



SS11-99



SS11-100

飾り金具鋳型





SS08-139



SS08-138



SS08-140



SS08-141



SS08-142



SS02-14



SS05-167



SS05-165



SS05-166



SD30-50



SS12-15



SS12-16



SD22-76



SD22-74

三叉状土製品



SD07-31



SD07-44



SD07-33



SD07-38



SD07-40



SD07-30



SD07-32



SD07-35



SD07-39



SD07-36



SD07-43



SD07-37



SD07-41

三叉状土製品



SS01-34



SS01-37



SD30-47



SS08-137

三叉状上製品 (上から)



グリッド-19



SD01-4



SD22-52



SD22-51



グリッド-18



SD22-53



SS13-13



SS01-6



2号粘土-4



SD43-75



SS08-132



SS08-132



SD30-10



SS08-134



SS08-133



SD30-11

トリベ・鍛冶羽口



SS08-136



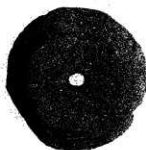
SS05-162



SS05-161



SD30-51



SD30-53



SS05-164

道具・紡錘車・土錘



SS08-96



SS09-10



SD07-17



SS08-122



SS13-19



SS11-119



SS08-121



SS05-178

銅塊・銅滓



SS05-180



SS05 181



SD07-16



SS11-122



SS11-121



SS11-20



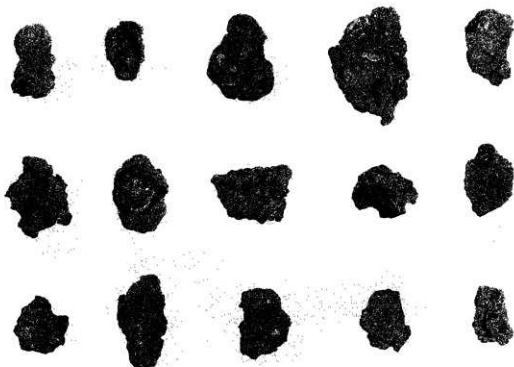
SS12-20



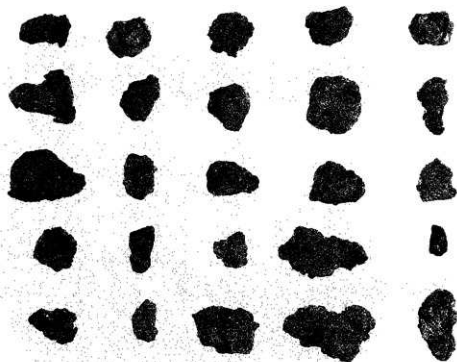
SS13-21



SD22-9



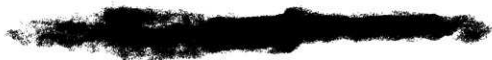
鉄塊系遺物



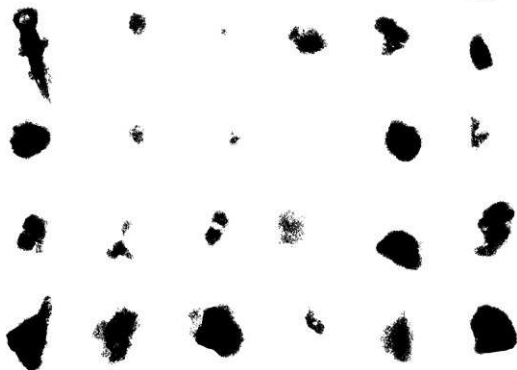
鉄塊系遺物



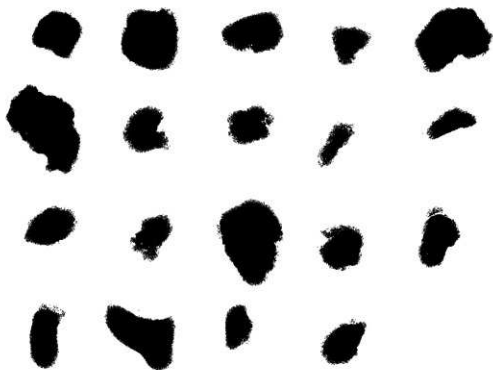
ハタまわし



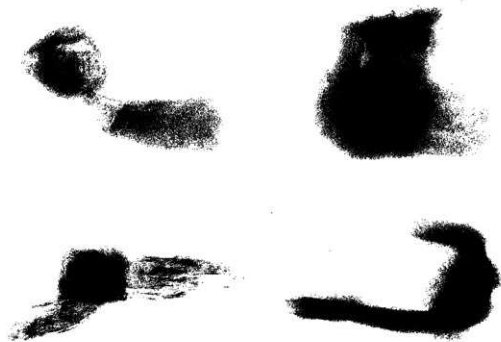
ハタまわし (X線写真)



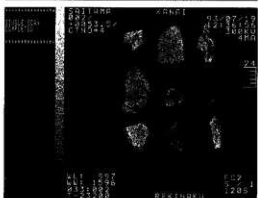
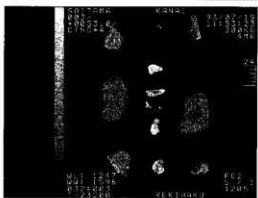
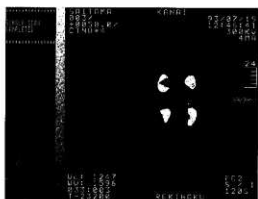
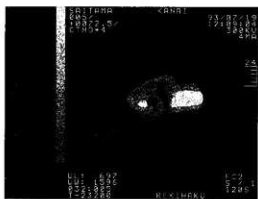
鉄塊系遺物 (X線写真)



鉄塊系遺物 (X線写真)

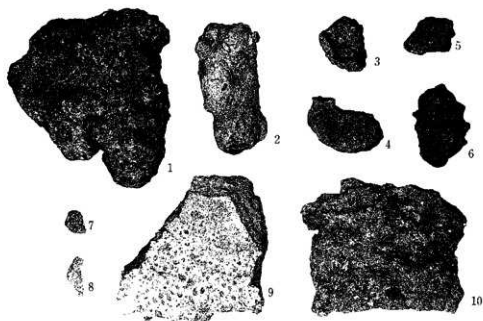


鉄製筒 (X線写真)

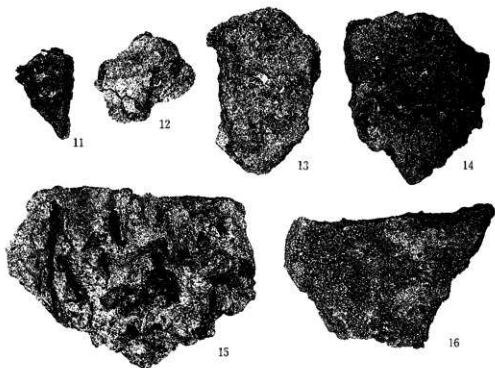


鉄塊系遺物 (X線CT写真)

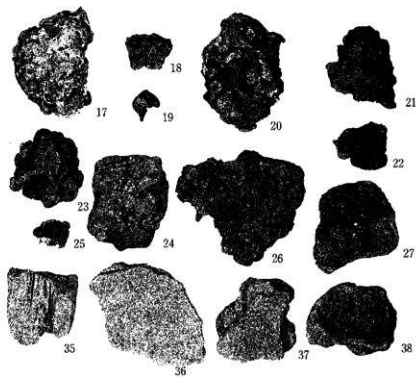




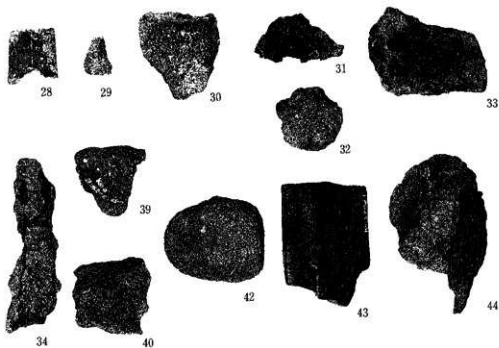
鑄造関連分析資料 1



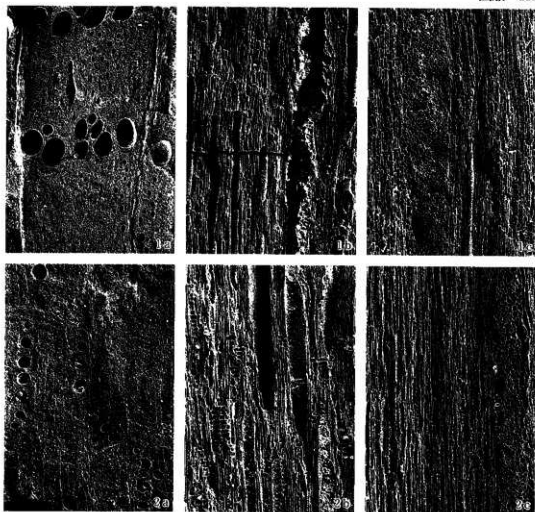
鑄造関連分析資料 2



鑄造関連分析資料 3



鑄造関連分析資料 4



1. コナラ属コナラ亜属クヌギ節の一種 (No.5)

2. コナラ属アカガシ亜属の一種 (No.4)

a : 木口, b : 柎目, c : 板目

200 $\mu$ m : a

200 $\mu$ m : b, c

自然化学分析 (炭化材) (82%)

図版 116

(1)KNB 1

鉄塊系遺物：SE-11

①×10 マクロ組織

②×400 硫化物系介在物

③×50 過熱組織

④×400 白鑄鉄 (局部)

⑤×200 硬度549Hv

⑥×200 硬度362Hv

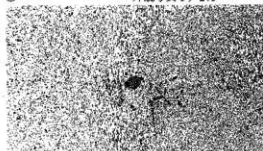
⑦×200 硬度294Hv

荷重200 R

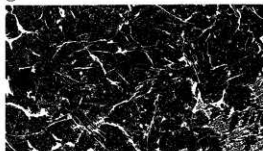


②

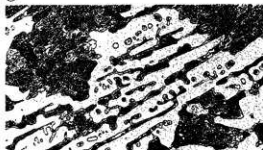
外観写真 1/2.9



③



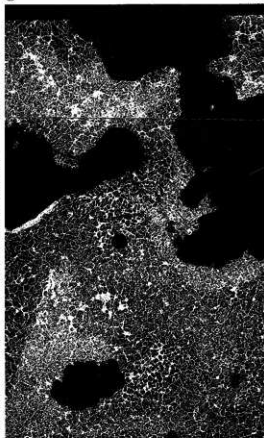
④



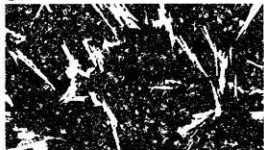
⑤



①



⑥



⑦



photo. 1 鉄塊系遺物の顕微鏡組織 (82%)

(2)KNB-2

金種：SS-10 SSK-1

①×10 マクロ組織

白色部：焼入マルテンサイト

②×400 介在物(Ti系)

③④×400 トルースタイト

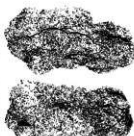
⑤×200 426Hv トルースタイト

⑥×200 351Hv トルースタイト

⑦×200 264Hv 微細セメント

⑧×200 172Hv パーライト

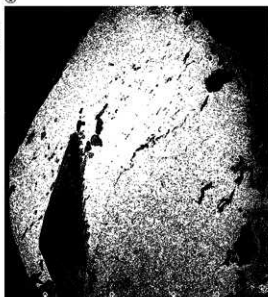
②



外観写真1/2.5

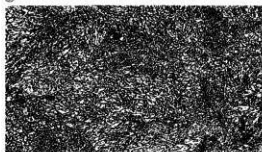


①

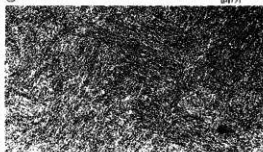


⑧ ⑦ ⑥ ⑤ 硬度測定箇所

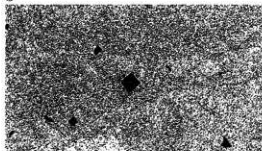
③



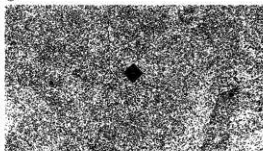
④



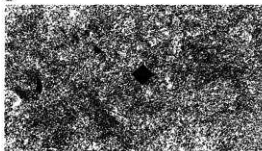
⑤



⑥



⑦



⑧

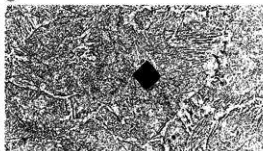


photo. 2 金種の顕微鏡組織 (82%)

図版 118

(3)KNB-3

鉄塊系遺物：SS11

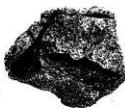
①×400 硫化物系介在物

②×200 8411lv セメント

③×200 802Hv レデブライト

④×200 38611v パーライト

⑤×50 亜共晶組成白鋳鉄

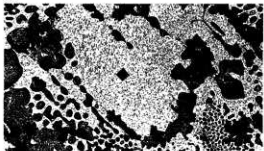


外観写真 1 / 1.1

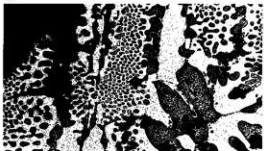
①



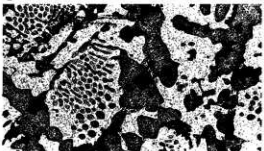
②



③



④



⑤

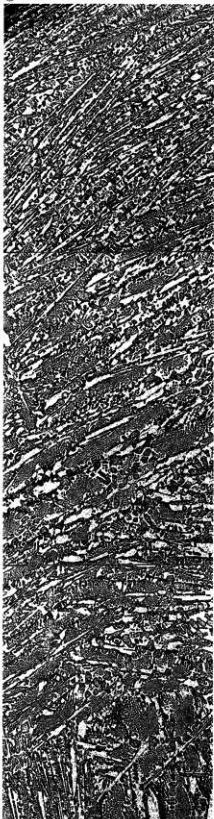


photo. 3 鉄塊系遺物の顕微鏡組織 (82%)

(4)KNB-4

鉄塊系遺物：L-12- E-5

①×400 硫化物系介在物

②×200 672Hv レデブライト

③×200 286Hv パーライト

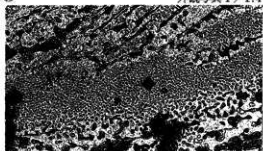


①

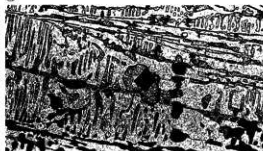


②

外觀写真 1 / 1.4



③



(5)KNB-6

鉄塊系遺物：SS-14

④×10 マクロ組織

ピクラル etch

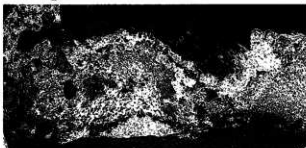
⑤×400 硫化物系介在物

⑥×200 硬度圧痕

490Hv 荷重200g

⑦×50 濃黒：自然腐食

亜共晶組成白鑄鉄



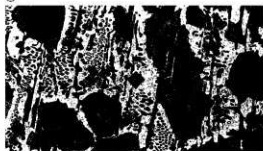
④

⑤

外觀写真 1 / 1.4



⑥



⑦

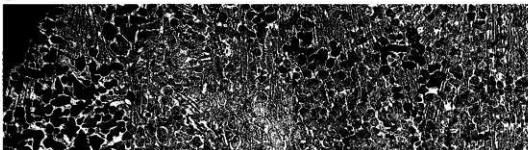


photo. 4 鉄塊系遺物の顕微鏡組織 (82%)

図版 120

(6)KNB-s

鉄塊系遺物：SS-05

- ①×400 研磨のまま片状黒鉛と硫化物介在物
- ②×400 ピクラルetch片状黒鉛とパーライト
- ③×200 148Hv 片状黒鉛
- ④×200 733lv レデライト
- ⑤×50 過共晶組成白鑄鉄 (片状黒鉛点在)

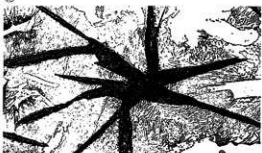


外観写真 1 / 1.1

①



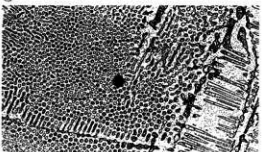
②



③



④



⑤



photo. 5 鉄塊系遺物の顕微鏡組織 (82%)



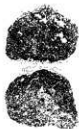
(7)KNB-7

銅塊：SS-10

①×400 研磨のまま

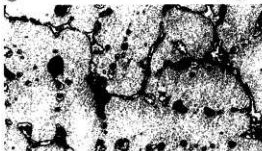
②×400 酢酸メチル 3  
腐食 硝酸 3  
水 5

③×200 硬度圧痕  
68.7Hv 荷重200g



外観写真  
1.2倍

②



①



③



(8)KNB-8

銅塊：SD-30

④×400 研磨のまま

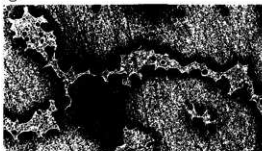
⑤×400 酢酸メチル 3  
腐食 硝酸 3  
水 5

⑥×200 硬度圧痕  
77.9Hv 荷重200g



外観写真1.2倍

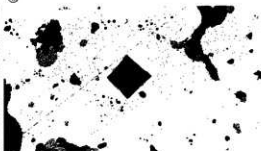
⑤



④



⑥



(9)KNB-9

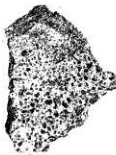
炉壁、銅、炉底部：SS-07

⑦×100 暗黒色ガラス  
質スラグ

誘化銅？

(誘化鉄かもしれない)

外観写真1/2.9



⑦

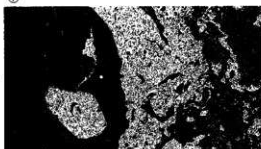


photo. 6 銅塊・炉壁銅の炉底部の顕微鏡組織 (82%)