



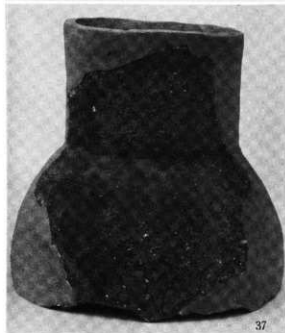
周濟墓 A 5 - 2 土器群, 壺 G (23) · H (24) · I (25) · K (27)



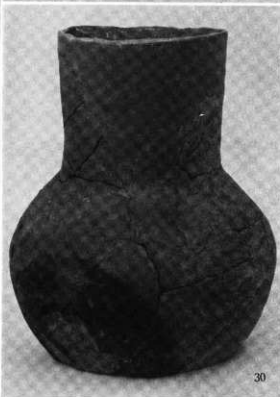
31



36



37



30



45



41

周溝墓A 5 - 2 土器群。壺 N₁ (30·31) · N₂ (36·37) · 壺底部 (41·45)



46



52



50



56



57



58

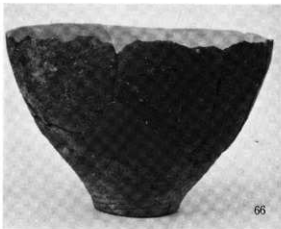


59



63

周溝墓A 5-2 土器群，壺 P (46·50·52) · 鉢 A₁ (56) · A₂ (57·58) · B₁ (59) · B₂ (63)



66



67



69



68



77



79



78



79



84



83

周清墓A5-2土器群，鉢C₁(66)・C₂(67)・D(68-69)・高坏A₁(77~79·83·84)



周清墓 A 5 - 2 土器群, 高环 A₁ (82) · A₂ (85·87~92·99)



103



105



104



109

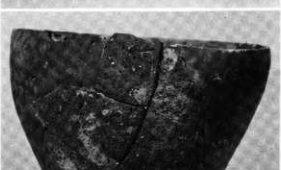


106



110

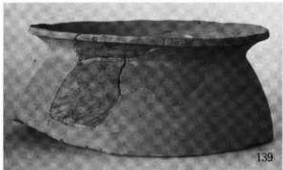
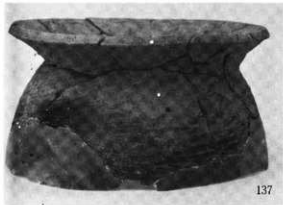
周溝墓 A 5 - 2 土器群。器台 A (103~106) · B (109~110)



周清墓A 5-2 土器群，有孔鉢A (112·113) · B (115~119) · 甕A, (127)



周溝墓 A 5 - 2 土器群, 甕 A, (128~131·133~136)



周溝墓A 5 - 2 土器群, 壺A, (137~140·142~144)



141



150



145

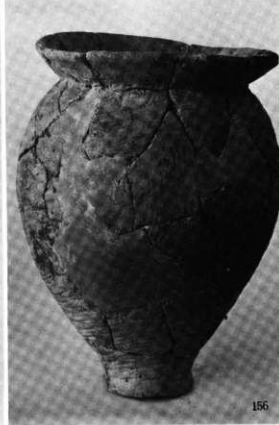
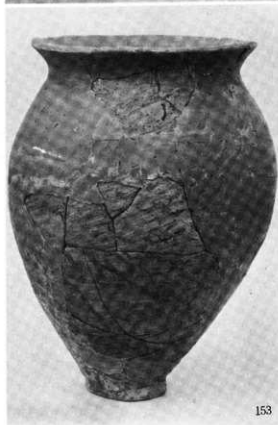


151



149

周溝基 A 5 - 2 土器群。壺 A₁ (141·145) · A₂ (149~151)



周溝墓 A 5 - 2 土器群, 甕 A₂ (152·153·155·156)



162



161



160



163



158

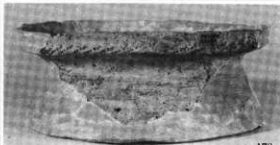


164



165

周溝基 A 5 - 2 土器群, 甕 B, (158·160~164) · B₂(165)



周溝墓A 5 - 2 土器群, 甕B₂(166)・C(167)・D(168)・E(173・174・177~179)



180



194



201



195



202



203



27

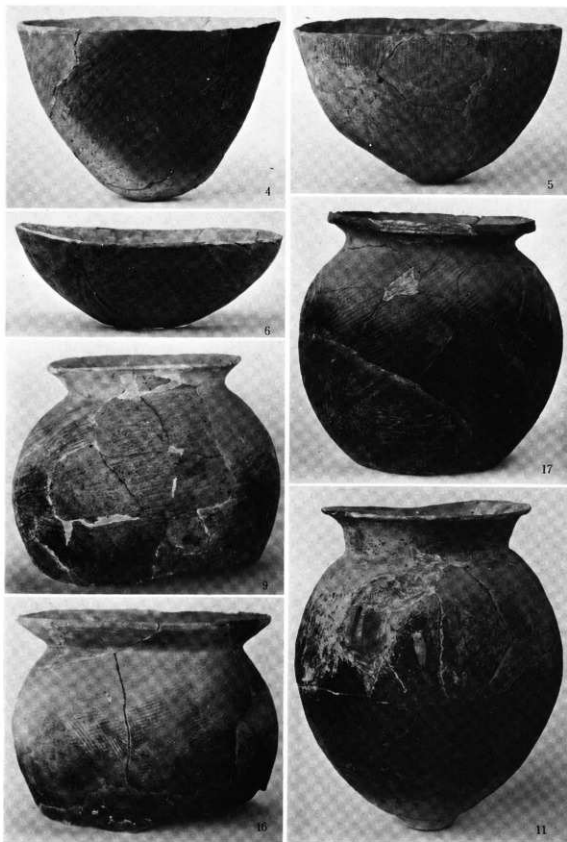


26

周溝墓 A 5 - 2 土器群。甕 E (180)・甕底部 (194・195・201~203) 包含層出土の土器、甕 B₂ (26)・鉢 E (27)



土城 3, 壺 A (204) · E (205) · 甕 B₂ (206) 井戸 1, 壺 R (1) · T (3) · 高坏 A (7)



井戸 1. 鉢 C₁ (4・5)・C₂ (6)・甕 A₂ (9)・A₄ (11)・F₁ (16)・G (17)



14



15



12



19

井戸1, 壺A₄(12)・F₁(14・15) 井戸2, 壺Q(19)



22



24



25



26



28

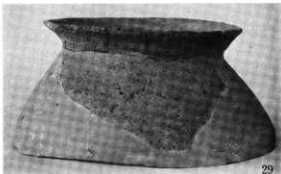


31

井戸 2. 高环(22)・壺 F₁(24)・F₂(25・26) 土坑 1. 高环(28)・壺 F₂(31)



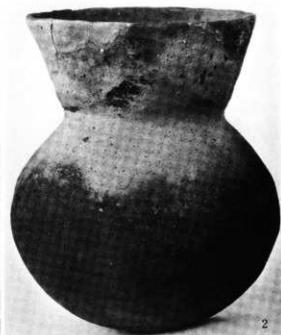
27



29



30



2



1



4



3



5

土坑1，鉢C(27)・甕A₂(29)・F₁(30)

井戸3，甕A(1)・D(2)・E(3)
高坏B(4)・高坏脚部(5)



井戸3, 甕A₂(6・7)・C(8) 井戸4, 甕A₂(9)・小形丸底壺(13)・手づくね土器(16-17)
 包含層出土の手づくね土器(52)



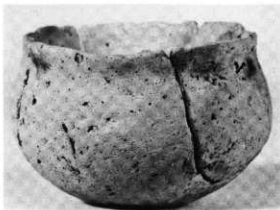
10



11



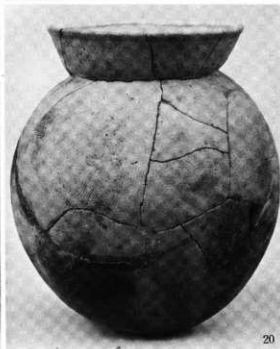
12



14



15



20

井戸4, 小形丸底壺(10・12)・小形粗製土器(14・15)・壺A,(20)



18



19



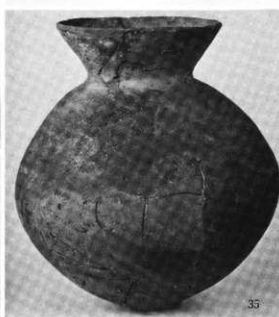
21



22



31

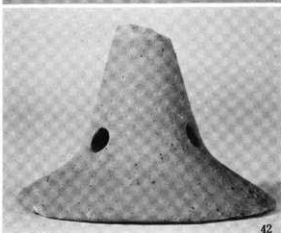
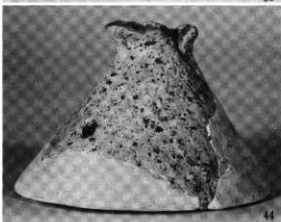


35

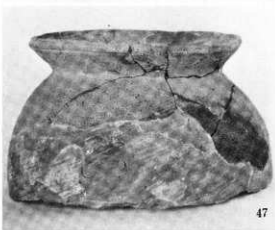


38

井戸4, 甕A₂(18・19) 土壇2, 甕A(21・22) 包含層出土の土器, 甕(31・35)・鉢(38)



包含層出土の土器，鉢(36・37・39・40)・高坏脚部(42~45)



包含層出土の土器。高坏B (41)・甕A (48・49)・F (47)・片口土器 (46)



50



51

a. 包含層出土の土器、高坏 B (50)・壺 (51)



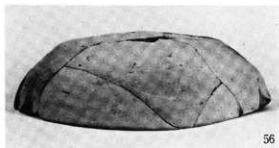
b. 北9地区出土の壺B。



c. 13-M-8-9地区出土の壺棺



d. 15-F-3-1地区出土の壺棺



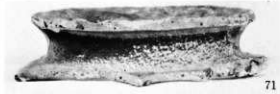
56



69



55



71



58



66



59



74



61



67



79



81



77



83



87



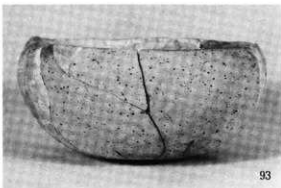
88



91



92



93



103



101

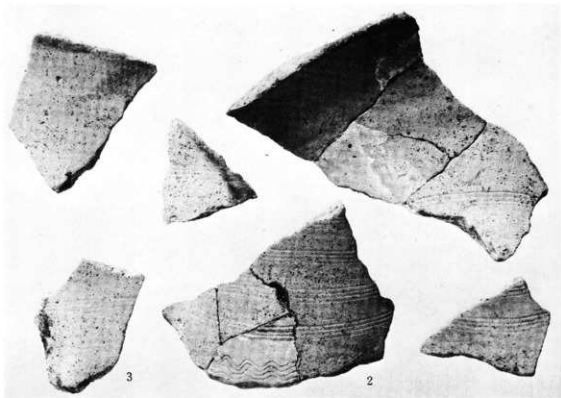


99

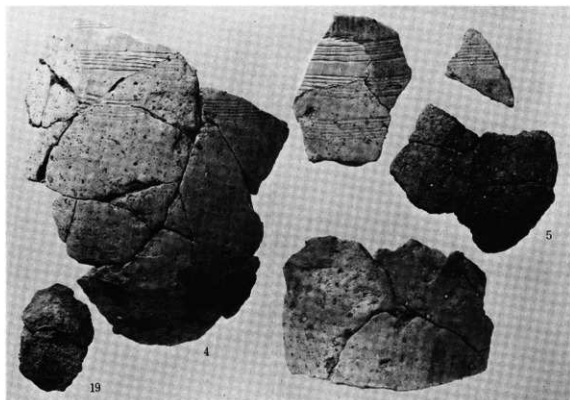


98

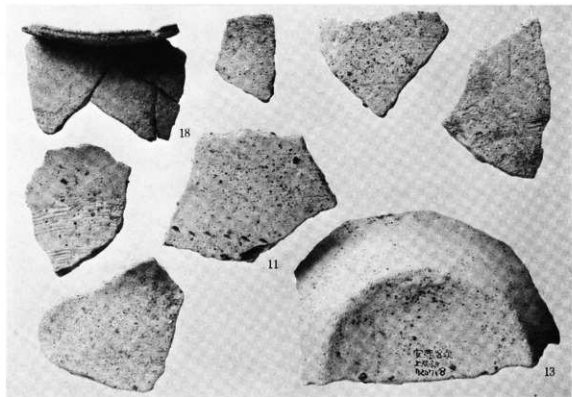
包含層出土の土器，土師器皿(77・79・81・83・87・88・91・92)・埴(93)・瓦器皿(103)・埴(98・99・101)



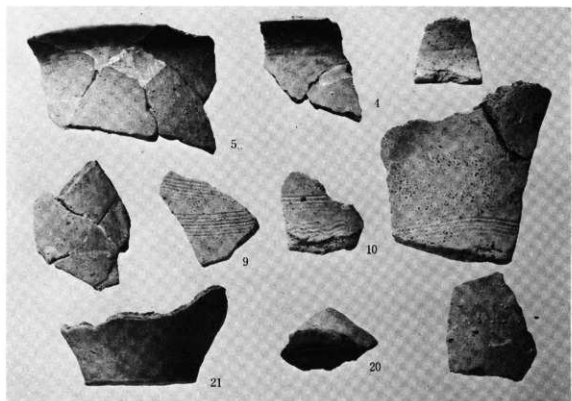
a. 土壇 6, 壺A



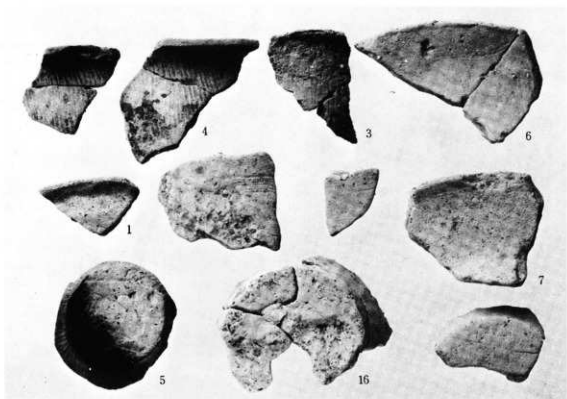
b. 土壇 6, 壺A 縄文土器(5) 包含層出土の土器、壺底



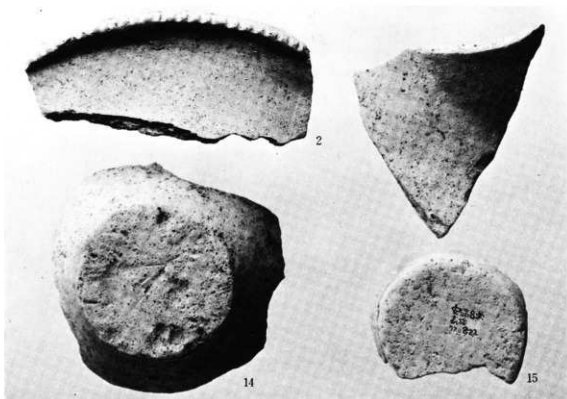
a. 包含層出土の土器，壺A・甕A



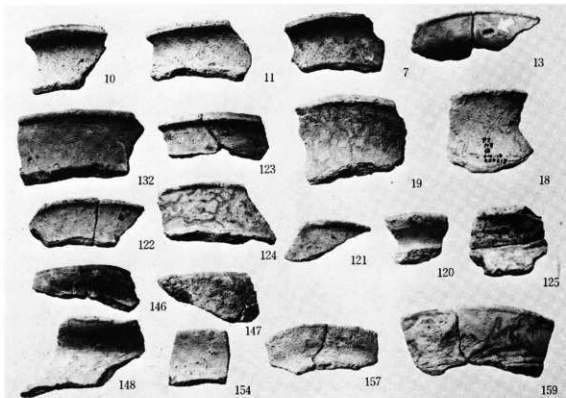
b. 包含層出土の土器，壺A・甕A



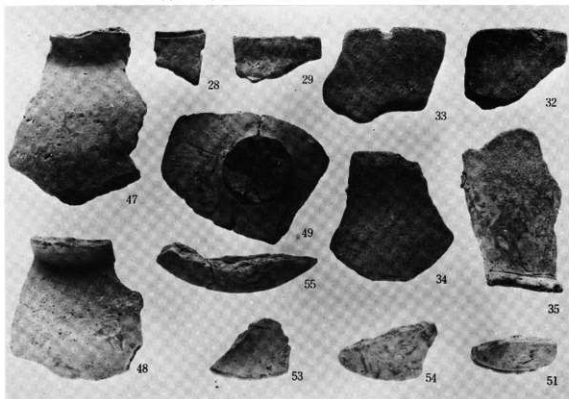
a. 周溝墓A 3, 甕A (4・5) 包含層出土の土器, 壺A・甕A



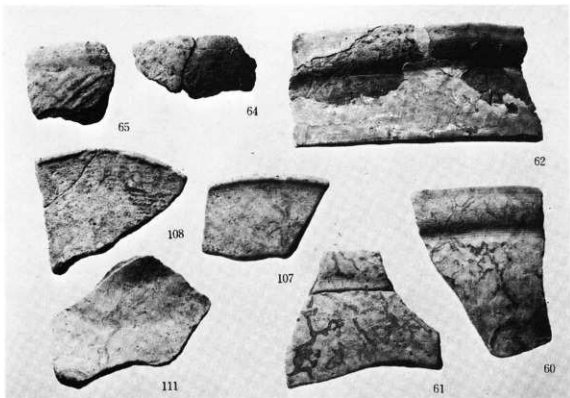
b. 包含層出土の土器, 壺A



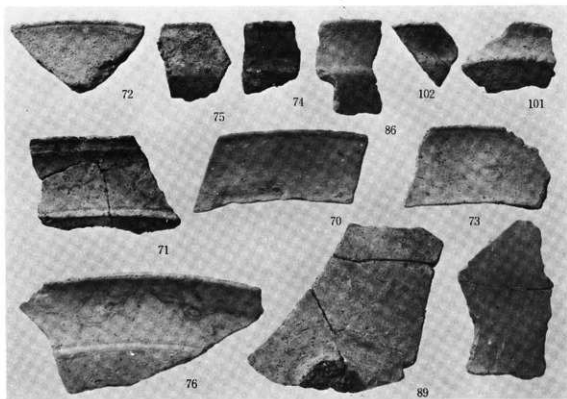
a. 周溝墓 A 5 - 2 土器群。壺 B₁ (7) · B₂ (10·11·13) · C (18·19) · 甕 A₁ (120~125·132) · A₂ (146~148·154) · B₁ (157·159)



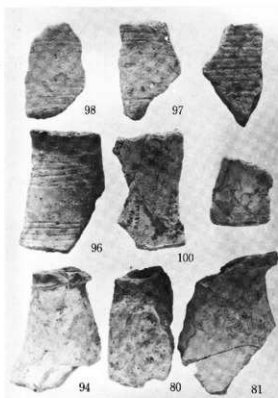
b. 周溝墓 A 5 - 2 土器群。壺 L (28) · M (29) · N₁ (32~35) · P (47~49) · 同脚台部 (51·53~55)



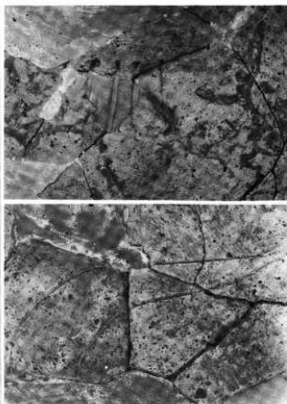
a. 周清墓 A 5 - 2 土器群, 鉢 B, (60~62) · C, (64·65) · 器台 B (107·108·111)



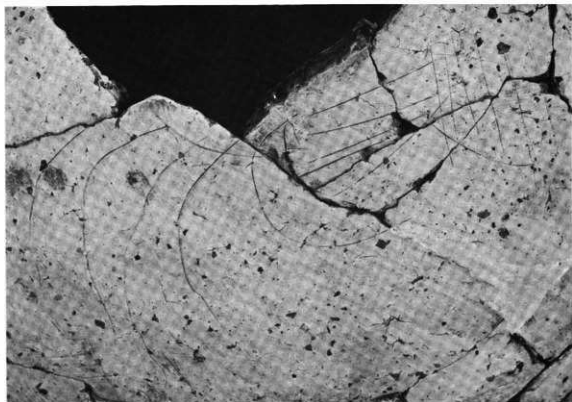
b. 周清墓 A 5 - 2 土器群, 高坏 A, (70~76) · A₂ (86·89) · 小形高坏 (101·102)



a. 高环 A₁ (80·81) · A₂ (94·96~98·100)

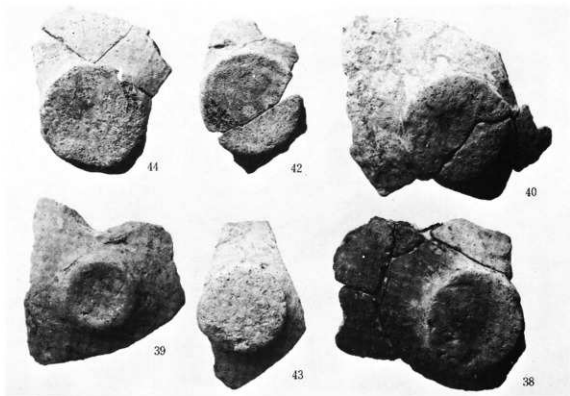


b. 周清墓 A 5 - 2 土器群, (上) 壺 B₂ (15) (下) 壺 G (23) 約尺

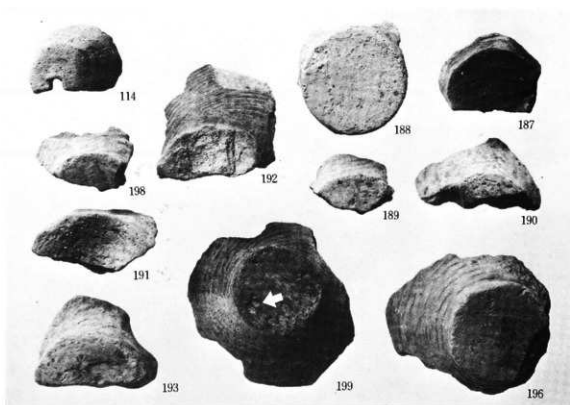


c. 土坑 3, 壺 A (204)

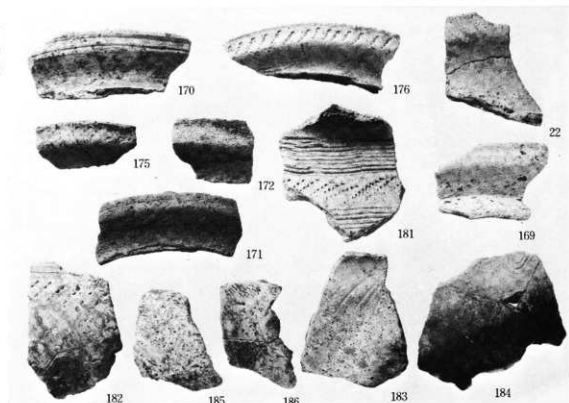
約尺



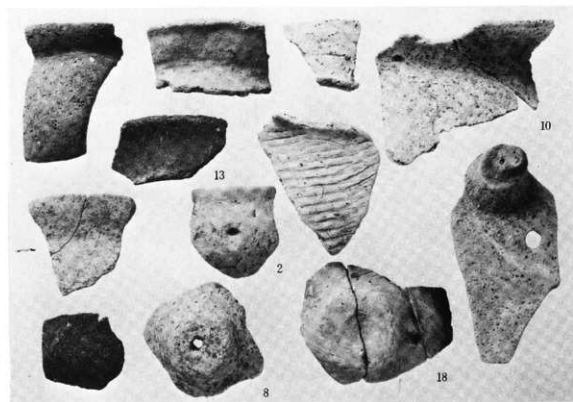
a. 岡清基 A 5 - 2 土器群, 壺底部



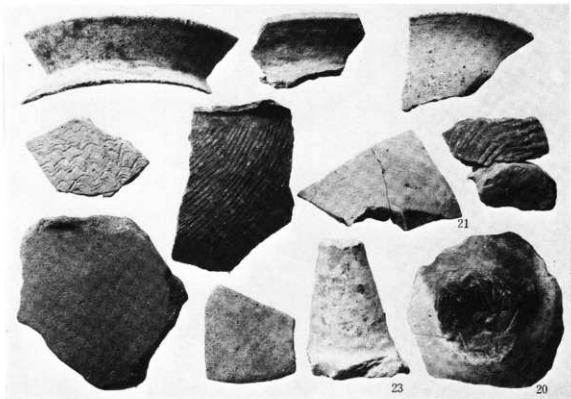
b. 岡清基 A 5 - 2 土器群, 有孔鉢 A (114)・その他壺底部



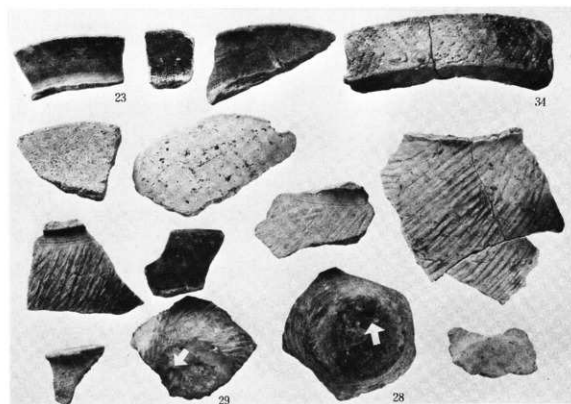
a. 岡清基 A5-2 土器群, 壺 F (22)・その他壺 E



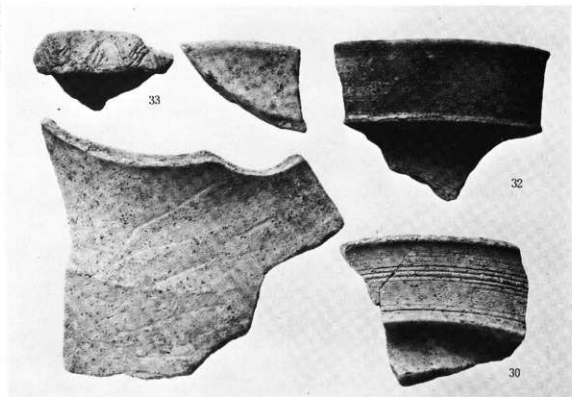
b. 井戸 1, 壺 S (2)・有孔鉢 A (8)・壺 A₂ (10)・F₁ (13)・甕底部 (18)・その他



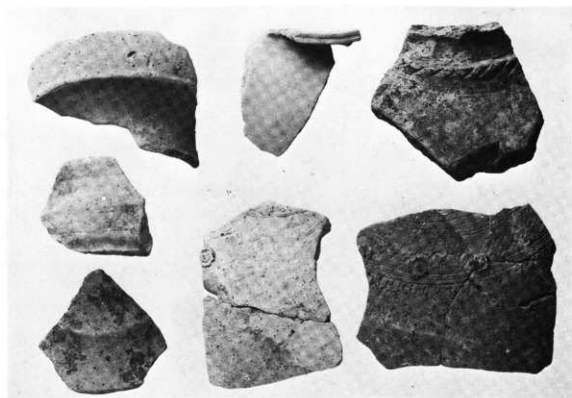
a. 井戸2、壺底部(20)・高坏(21・23) 包含層出土の土器



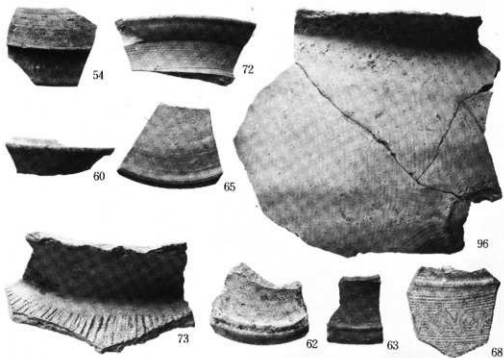
b. 包含層出土の土器、壺・甕・手焙形土器



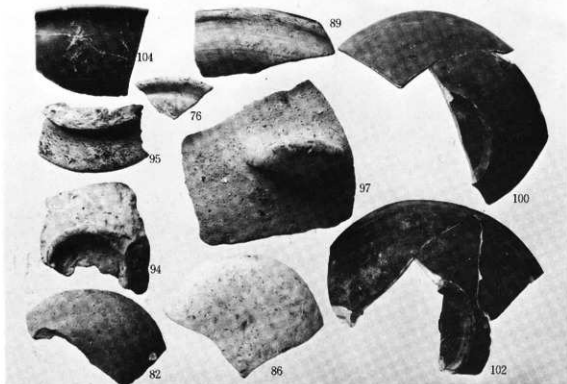
a. 包含層出土の土器, 壺



b. 包含層出土の土器, 壺・甕・器台

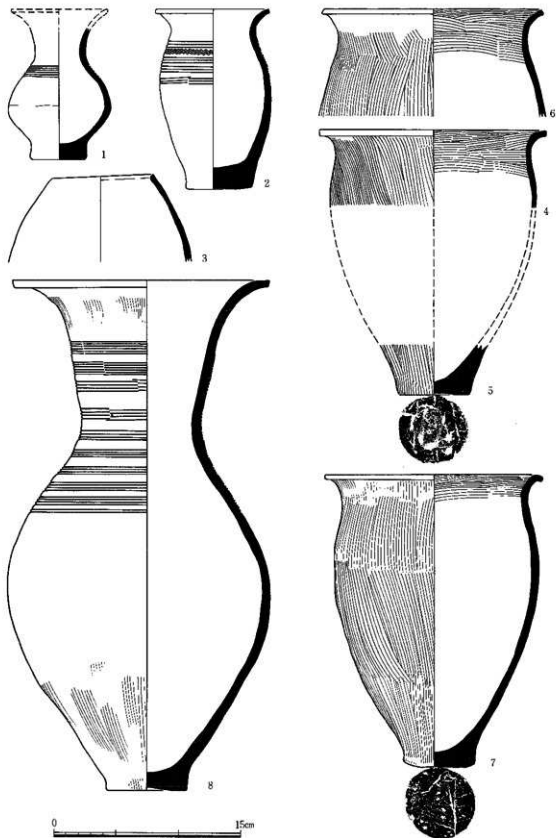


a. 包含層出土の土器, 須恵器 蓋坏(54・60・65)・高坏(62・63)・壺・甕(68・72・73) 土師器 把手付鍋(96)

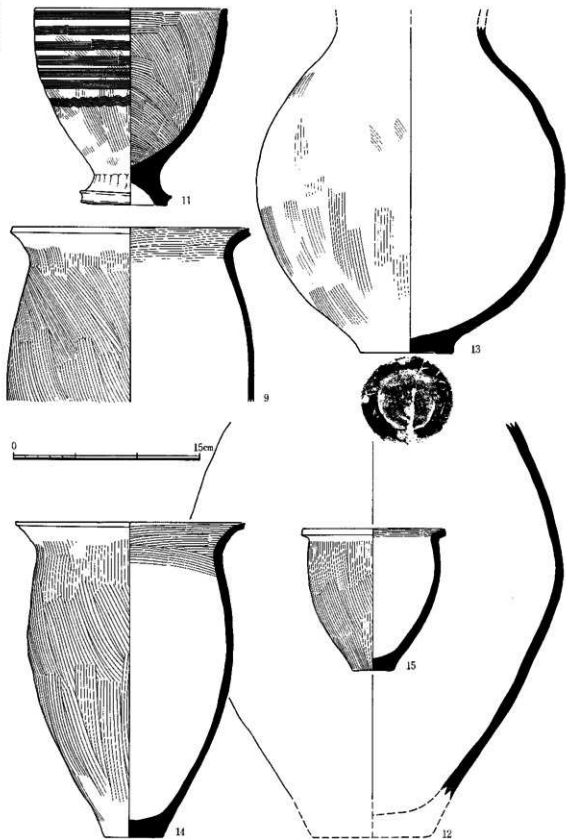


b. 包含層出土の土器, 土師器 皿(76・82・86・89)・蓋(95)・鉢(94)・把手(97) 瓦器 埴(100・102) 磁器 埴(104)

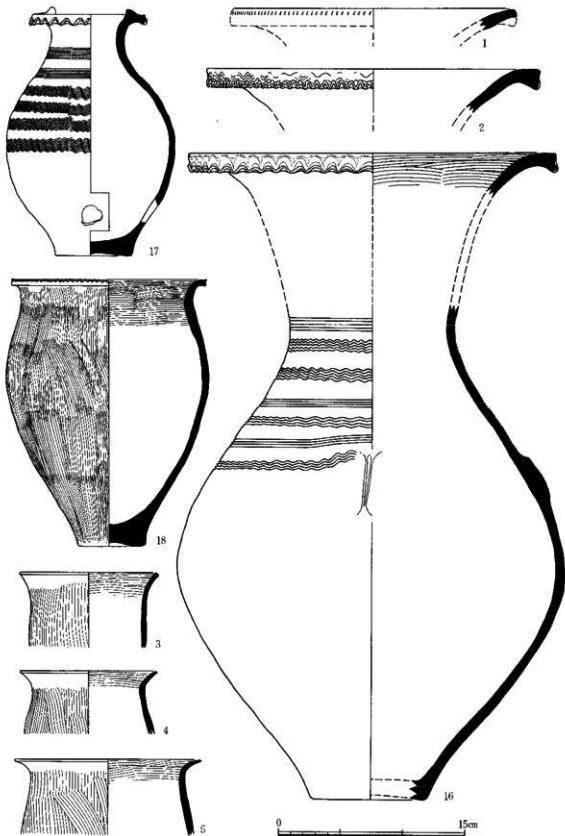




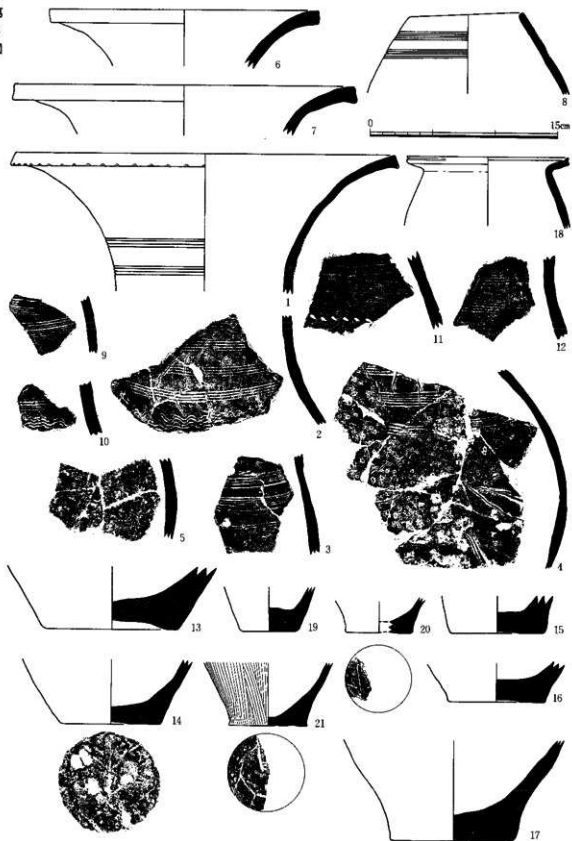
周清基A 1, 小形壺A (1) 周清基A 3, 壺C (2) · D (3) · 甗A (4·5) 周清基A 4, 甗A (6·7) 周清基A 5, 壺A (8)



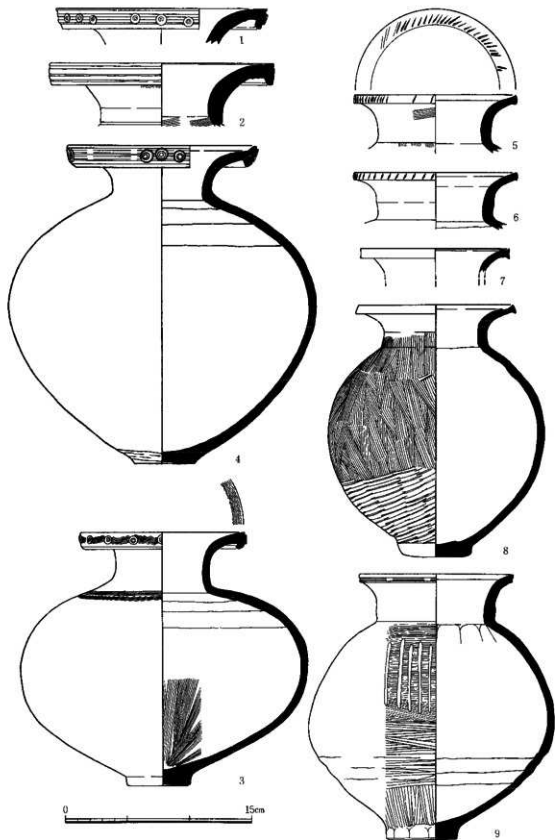
周清基A 5. 甗A (9) 周清基B 1, 台付深鉢 (11) 周清基B 2. 甗 (12) 周清基B 3-2. 甗A (13) · 甗A (14) · B (15)



岡崎基 B 4-2、壺 A (16)・B (17)・壺 A (18) 包含層出土の土器、壺 A (1・2)・壺 A (3~5)



土坑6，壺A(1~4)・鉢(5) 包含層出土の土器，壺A(6・7・9~12)・D(8)・壺底部(13~17)・甕A(18) 甕底部(19~21)

周清墓A5-2土器群, 壺A₁(1~3)·A₂(4)·B₁(5~8)·B₂(9)