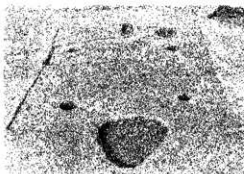
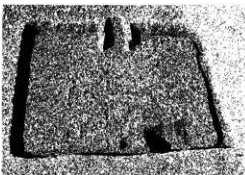


第52号住居跡



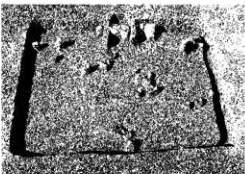
第54号住居跡



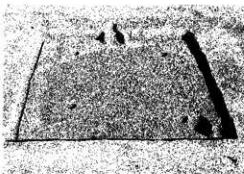
第53号住居跡



第55号住居跡



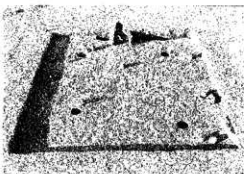
第53号住居跡遺物出土状況



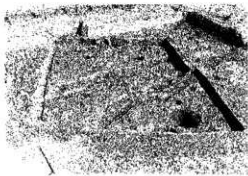
第56号住居跡



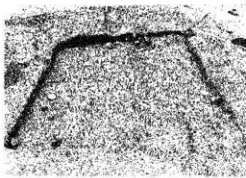
第53号住居跡貯藏穴



第56号住居跡遺物出土状況



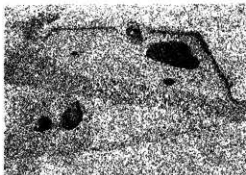
第57号住居跡



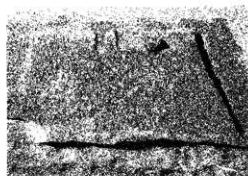
第59号住居跡遺物出土状況



第57号住居跡遺物出土状況



第60号住居跡



第58号住居跡



第61号住居跡



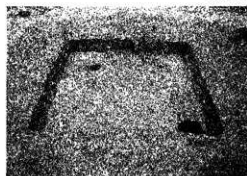
第59号住居跡



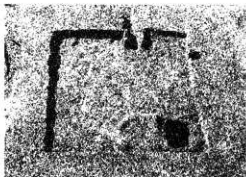
第61号住居跡遺物出土状況



第62·63号住居跡



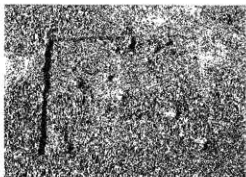
第66号住居跡



第64号住居跡



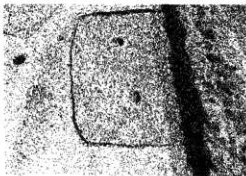
第66号住居跡遺物出土狀況



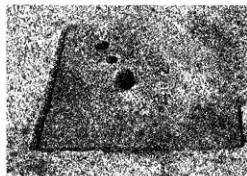
第64号住居跡遺物出土狀況



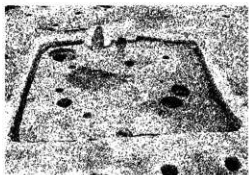
第67号住居跡



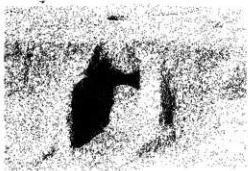
第65号住居跡



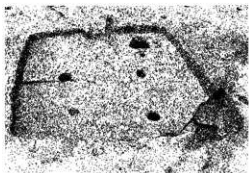
第68号住居跡



第70号住居跡



第73号住居跡カマド



第71号住居跡



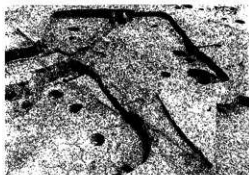
第73号住居跡貯蔵穴



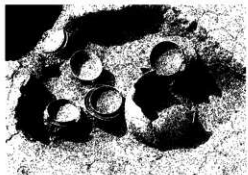
第72号住居跡



第75号住居跡



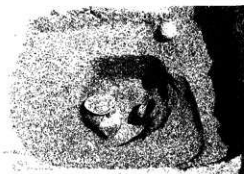
第73号住居跡



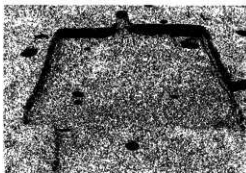
第75号住居跡貯蔵穴



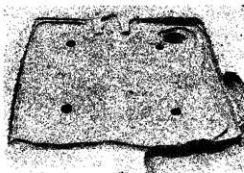
第77号住居跡



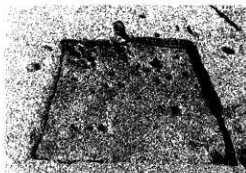
第78号住居跡貯蔵穴



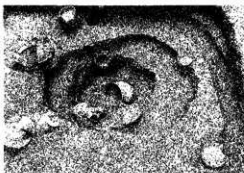
第78号住居跡



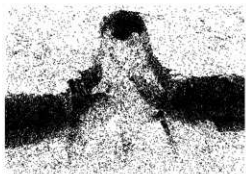
第79号住居跡



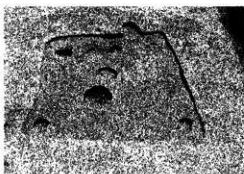
第78号住居跡遺物出土状況



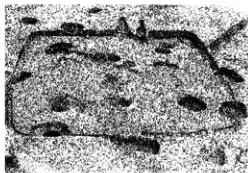
第79号住居跡貯蔵穴



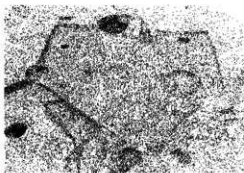
第78号住居跡カマド



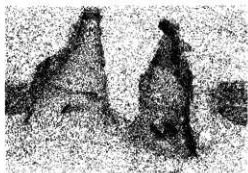
第81号住居跡



第82号住居跡



第85号住居跡



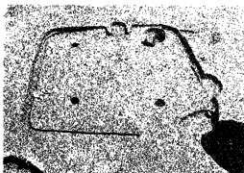
第82号住居跡カマド



第85号住居跡カマド



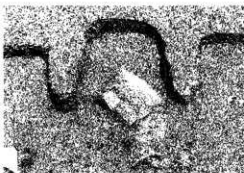
第84号住居跡カマド



第87号住居跡



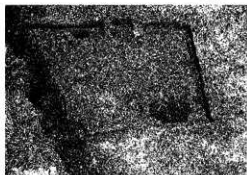
第84号住居跡子持勾玉出土状況



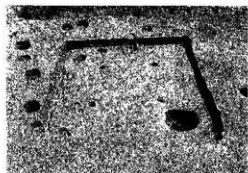
第87号住居跡カマド



第87号住居跡編物石出土状況



第91号住居跡



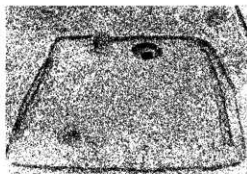
第88号住居跡



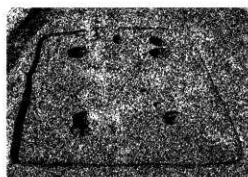
第93号住居跡



第88号住居跡カマド



第94号住居跡



第90号住居跡



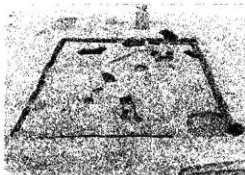
第94号住居跡カマド



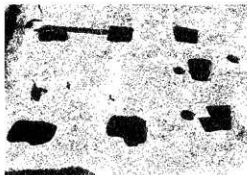
第94号住居跡貯藏穴



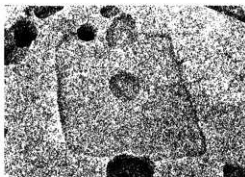
第99号住居跡



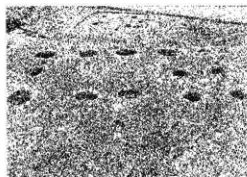
第96・97号住居跡



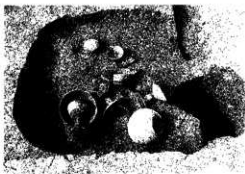
第1号掘立柱建物跡



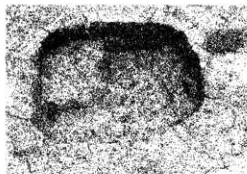
第97号住居跡



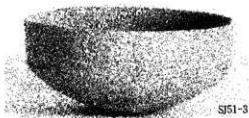
第2号掘立柱建物跡



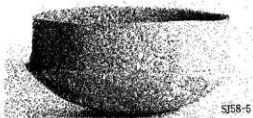
第96号住居跡貯藏穴



第19号土坑



SJ51-3



SJ58-5



SJ53-4



SJ68-2



SJ64-6



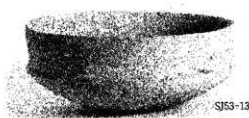
SJ73-1



SJ53-9



SJ59-4



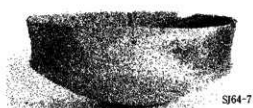
SJ53-13



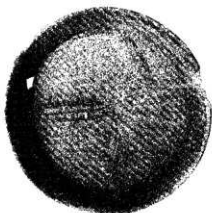
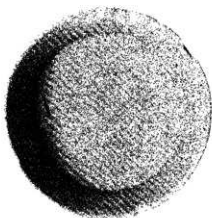
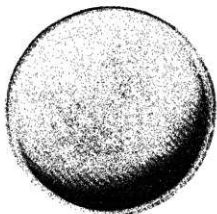
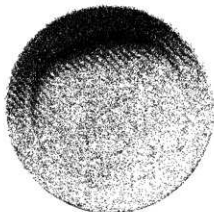
SJ66-3

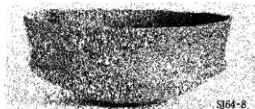


SJ53-16

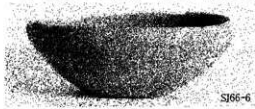


SJ64-7





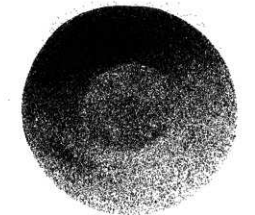
SI64-8



SJ66-6



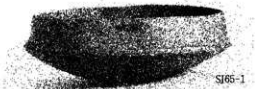
SI64-10



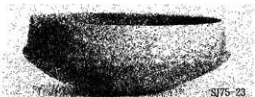
SJ96-18



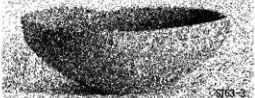
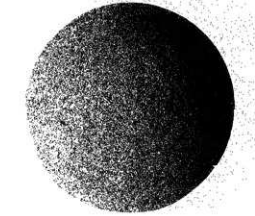
SI69-17



SI65-1



SI75-23



SI63-3



SI70-4



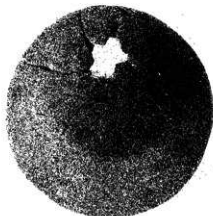
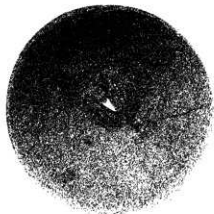
SI97-6



SJ66-5



SJ64-2



SJ73-19



SJ73-8



SJ66-2



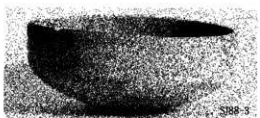
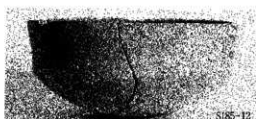
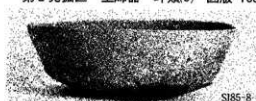
SJ53-7



SJ74-22



SJ75-7





SJ88-4



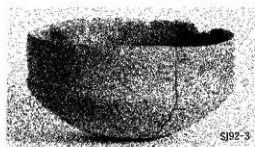
SJ96-12



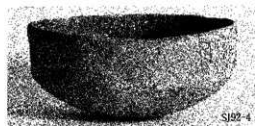
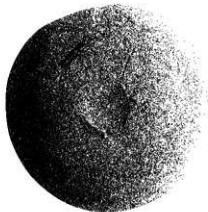
SJ91-1



SJ97-4



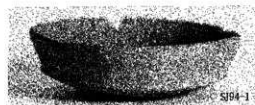
SJ92-3



SJ92-4



SJ64-17



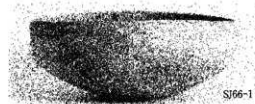
SJ94-1



SJ96-11



SJ96-13



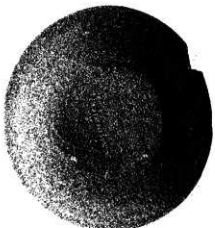
SJ66-1



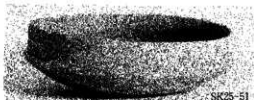
SJ77-2



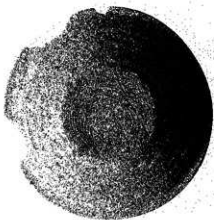
SJ91-14



SJ77-10



SK25-51



SK26-45



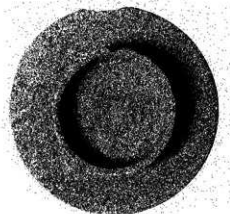
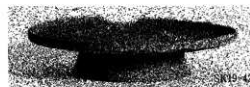
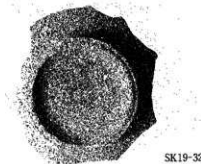
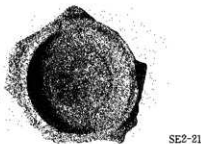
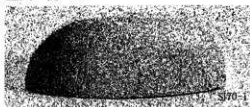
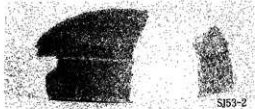
SE2-7

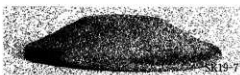
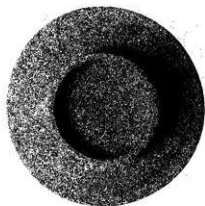


SJ98-1



SK29-58







SJ78-42



SJ80-9



SJ79-12



SJ91-8



SJ78-72



SJ80-10



SJ74-62



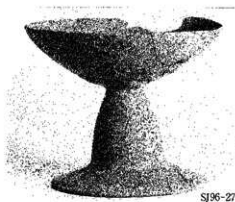
SJ74-60



SJ96-32



SJ96-33



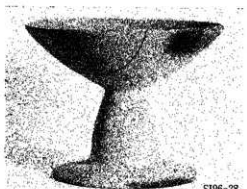
SJ96-27



SJ96-26



SJ96-30



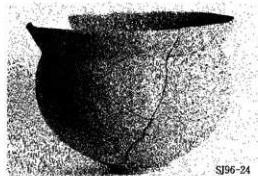
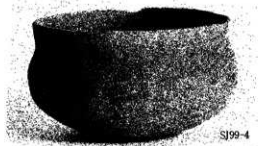
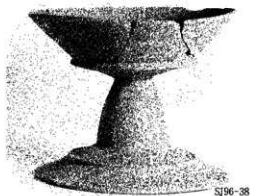
SJ96-28

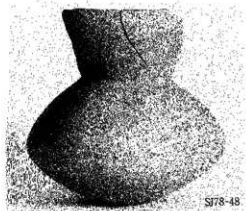
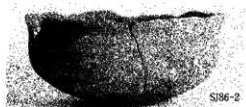


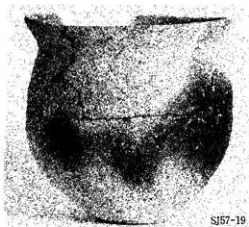
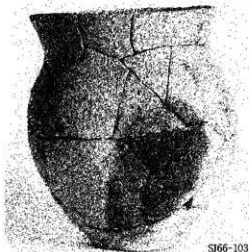
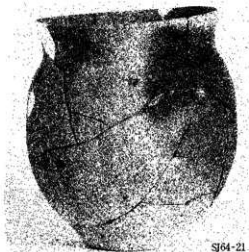
SJ78-20



SJ85-17

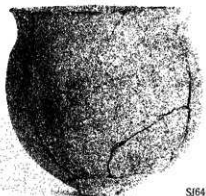








SJ56-23



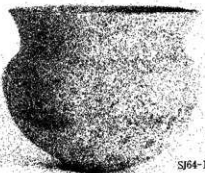
SJ64-20



SJ57-22



SJ66-110



SJ64-19



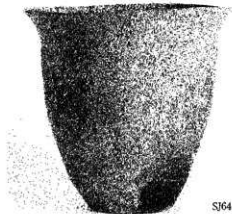
SJ99-8



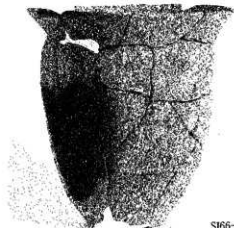
SJ59-27



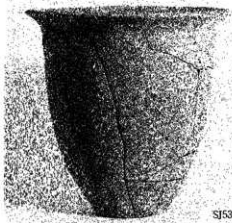
SJ78-29



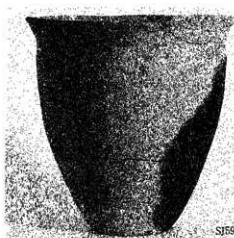
SJ64-32



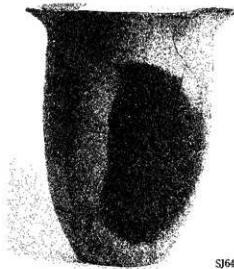
SJ66-147



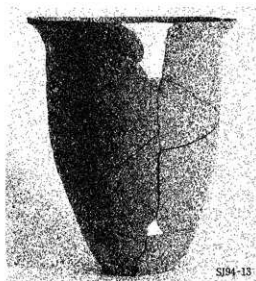
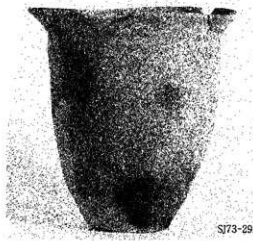
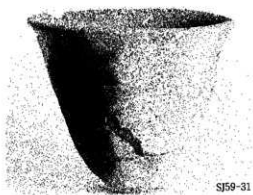
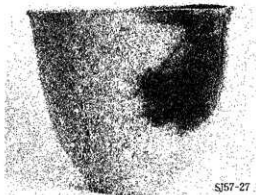
SJ53-44

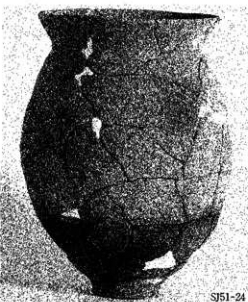
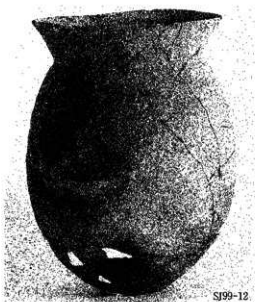


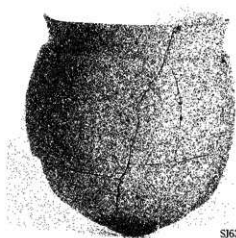
SJ59-33



SJ64-31



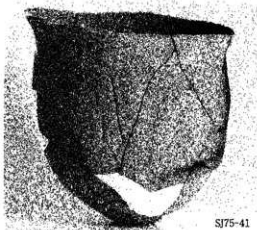




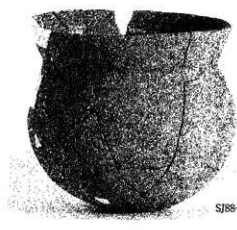
SJ63-5



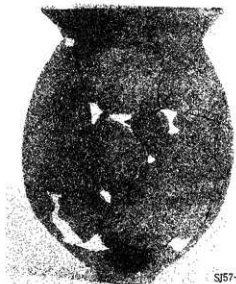
SJ58-8



SJ75-41



SJ88-22



SJ57-30



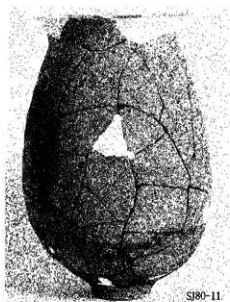
SJ66-130



SJ70-46



SJ86-8



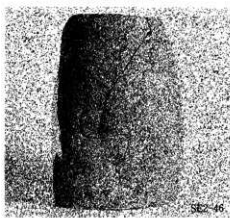
SJ80-11



SJ59-30

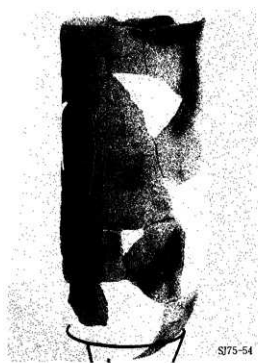


SJ2-47



SJ2-46







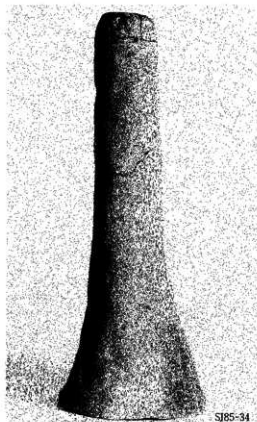
SJ61-52



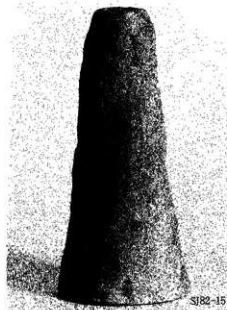
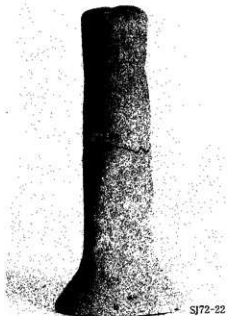
SJ61-45



SJ58-14



SJ85-34



報告書抄録

フリガナ	ジョウシキメンイセキ						
書名	上敷免遺跡						
副書名	一般国道17号深谷バイパス関係埋蔵文化財発掘調査報告書					巻次	V
シリーズ	埼玉県埋蔵文化財調査事業団報告書					巻次	第128集
編著者	瀧瀬芳之 山本 靖 西井幸雄 村田章人 三浦佳代						
編集機関	財団法人 埼玉県埋蔵文化財調査事業団						
所在地	〒369-01 埼玉県大里郡大里村大字箕輪字船木884 Tel 0493-39-3955						
発行日	1993(平成5)年3月31日						
フリガナ	フリガナ	コード	北緯	東経		調査面積	
所収遺跡	所在地	市町村	遺跡	(° ' ")	(° ' ")	調査期間	調査原因
ジョウシキメンイセキ 上敷免遺跡	フセキシヨキアワセジョウシキメン 深谷市大字上敷免	11218	0006	36° 12' 26"	139° 18' 00"	19850401 ~19871209	39,400 道路建設
所収遺跡	種別	主な時代	主な遺構	主な遺物		特記事項	
上敷免遺跡	集落	縄文中期	集石1	土器			
		縄文後期～ 晩期	土坑1 包含層	土器 石器 玉類 土製品		縄文晩期終末～ 弥生初頭の一括 資料	
		弥生前期		土器		遠賀川式土器	
		弥生後期	竪穴住居4 土坑2	土器 石器			
		古墳前期	竪穴住居2 方形周溝墓9 古墳跡1	土師器 鉄製鎌			
		古墳中期～ 奈良・平安	竪穴住居272 獨立柱建物跡10 井戸14 土坑168 溝19	土師器 須恵器 石製品(模造品・玉類・ 石錘・土錘・紡錘車) 墨書土器 円面碇 瓦 鉄製品		子持勾玉 土製模造鏡 徳利型平底壺	
		中・近世	井戸1 溝12	板碑 灯明皿 焙烙			

埼玉県埋蔵文化財調査事業団報告書 第128集

上敷免遺跡

一般国道17号深谷バイパス埋蔵文化財発掘調査報告

—V—

(第2分冊)

平成5年3月25日 印刷

平成5年3月31日 発行

発行 財団法人 埼玉県埋蔵文化財調査事業団

〒369-01 大里郡大里村大字箕輪字船木884

電話 (0493) 39-3955

印刷 新日本印刷株式会社