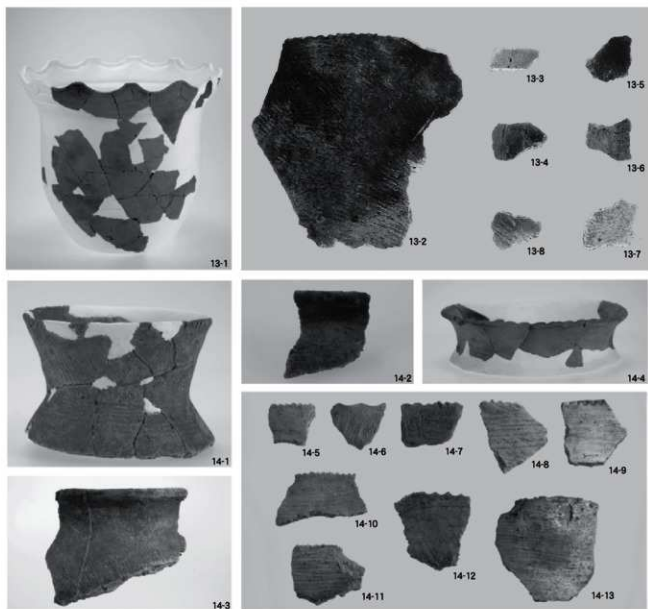
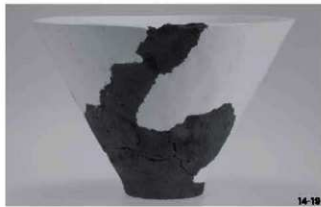
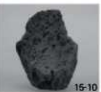
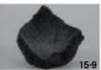


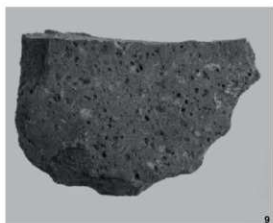
(1) 遺構出土土器



(2) 包含層出土土器







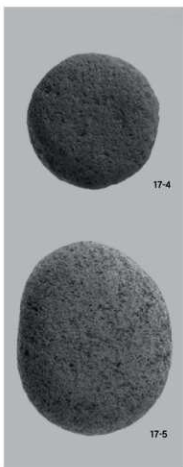
(1) 打製石斧



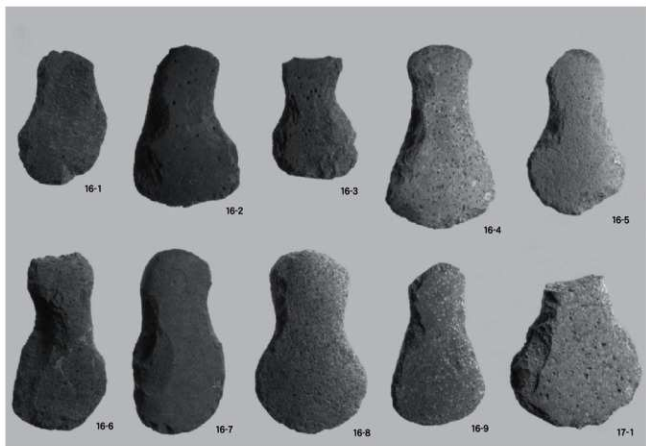
(2) 打製石斧 (ミニチュア)



(3) 磨製石斧

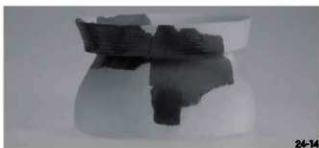
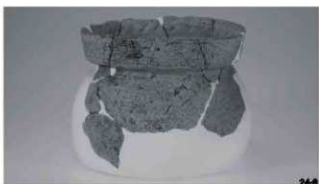


(4) 磨石類



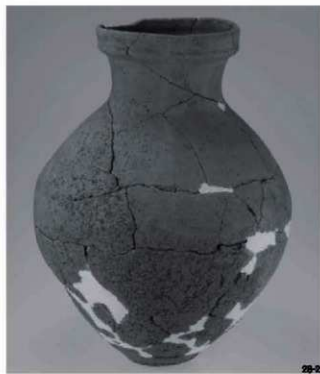
(5) 打製石斧

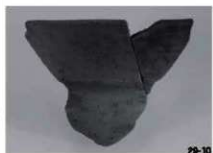




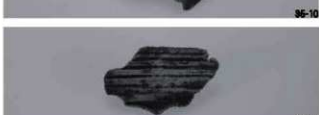


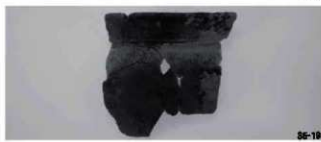














30-11



37-2



37-3



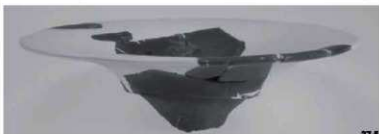
30-12



37-4



30-13



37-5



30-14



37-6



30-15



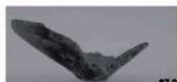
37-7



30-16



37-8



37-9



37-1



37-10



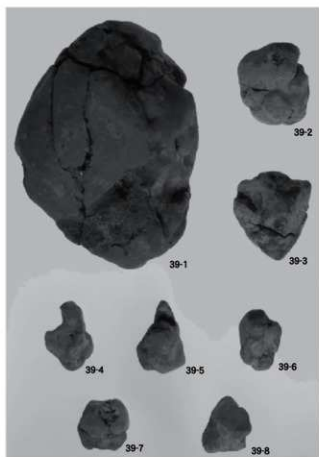
37-11



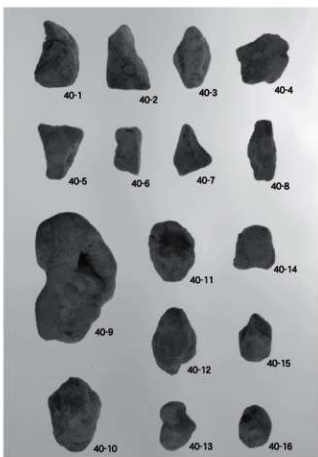
37-12



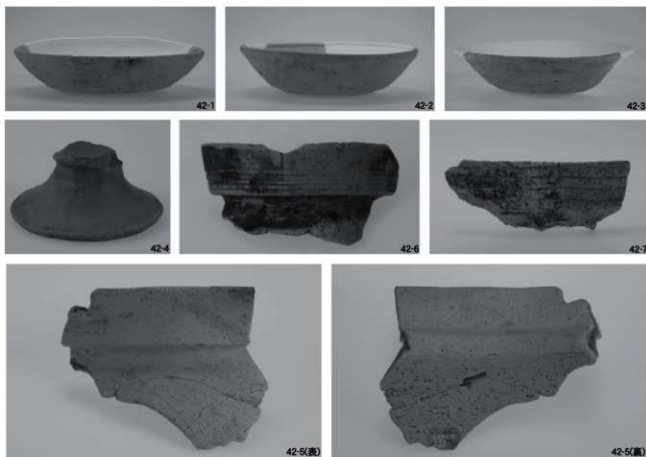
37-13



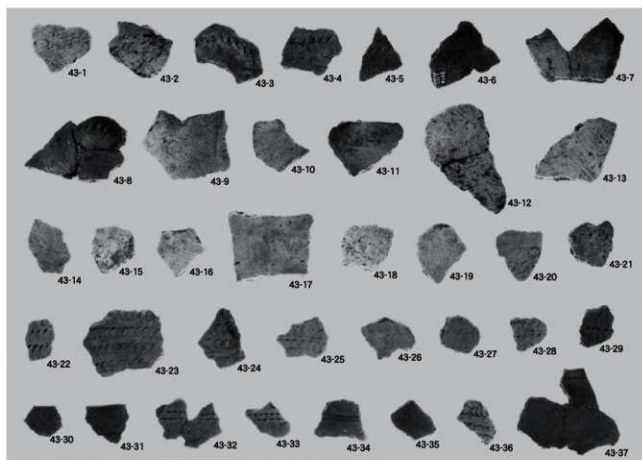
(1) 粘土塊



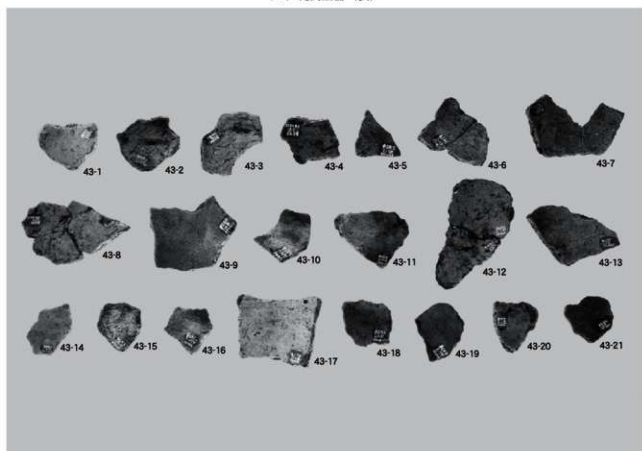
(2) 粘土塊



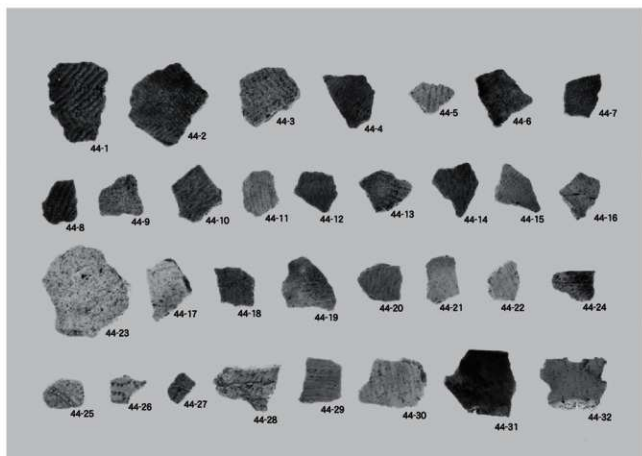
(3) 遺構出土土器



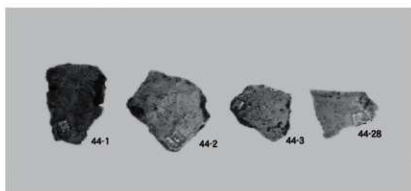
(1) 縄文土器 (表)



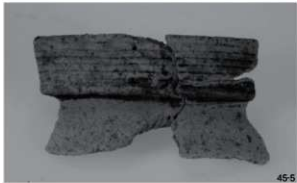
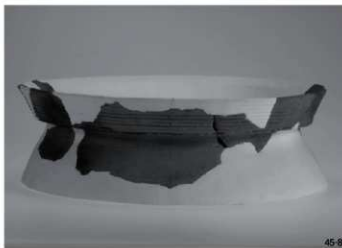
(2) 縄文土器 (裏)

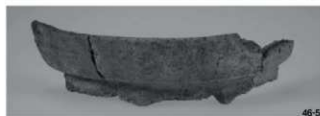
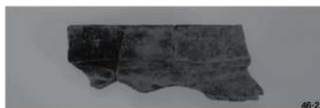


(1) 縄文土器 (表)



(2) 縄文土器 (裏)







46-18



46-19



46-20



47-1



47-2



47-3



47-4



47-5



47-6



47-7



47-8



47-9

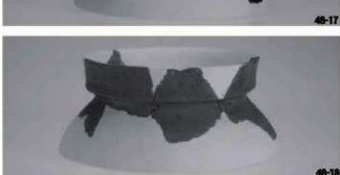
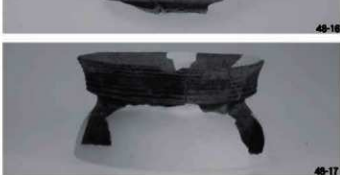


47-10



47-11













51-1



51-3



51-2



51-5



51-4



51-8



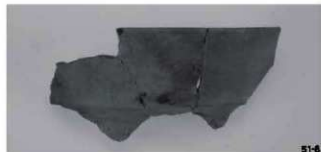
51-9



51-7



51-10



51-6



51-11















55-4



55-10



55-7



55-11



55-8



55-12



55-13



55-9



55-14



56-1



56-2



56-3



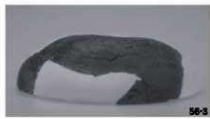
56-4



56-5



56-6



56-7



56-8



56-9



56-10



56-11



56-12



56-13



56-14



56-15



56-16



56-17



56-18



56-19



56-20



56-21



56-22



56-23



56-24



58-12



58-12(B)



58-13



58-14



58-15



58-16



58-17



58-18



58-19



58-20



58-21



58-22



58-23



58-24



58-25



58-27



58-28



58-28(B)



58-29



58-29



58-30



58-30(B)



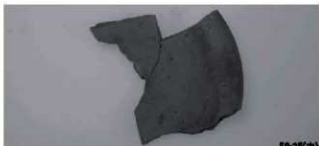
58-1

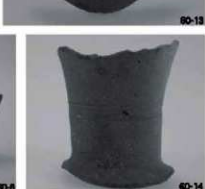


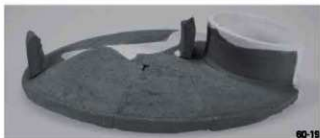
58-2

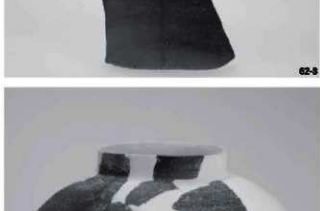


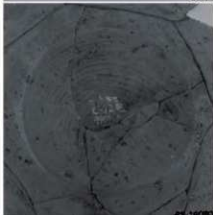
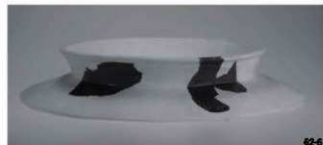
58-3

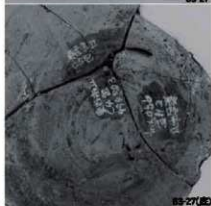
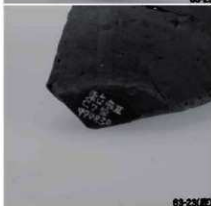
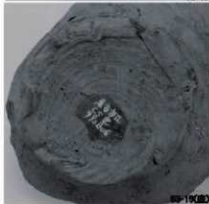
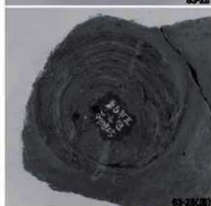
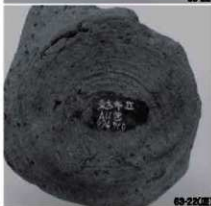
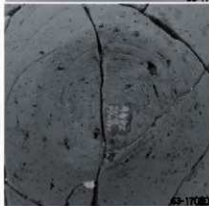
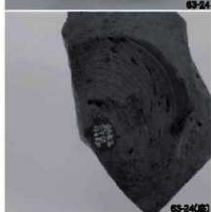


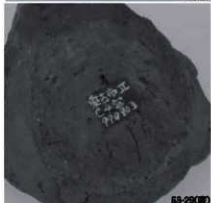


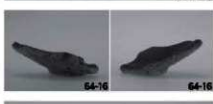
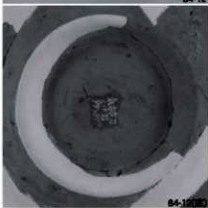
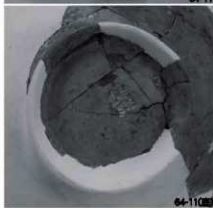
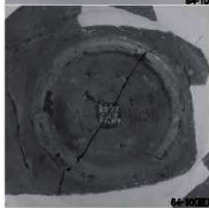






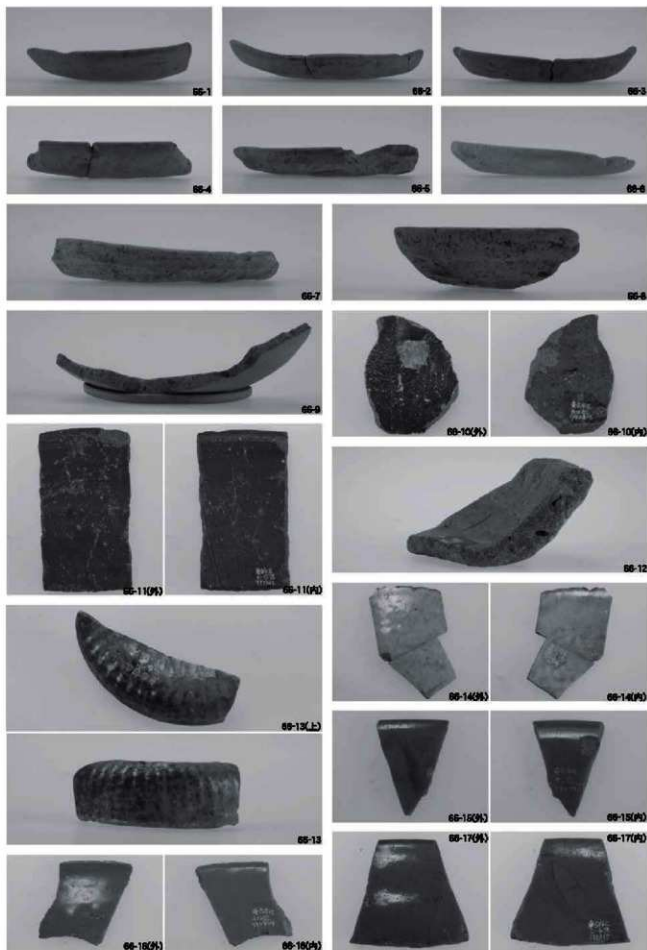


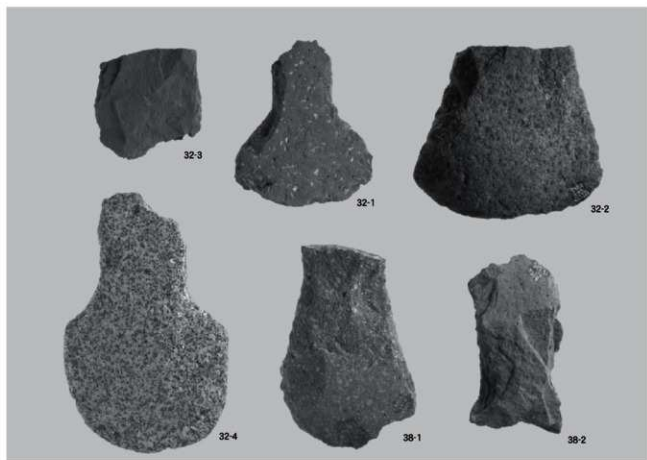




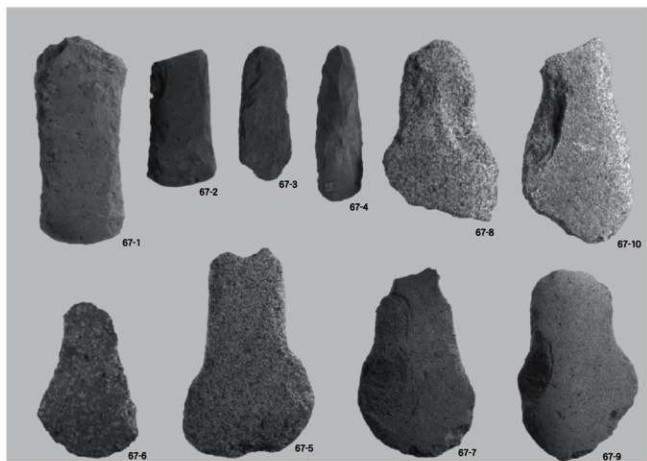
図版第五四
遺物 II 区



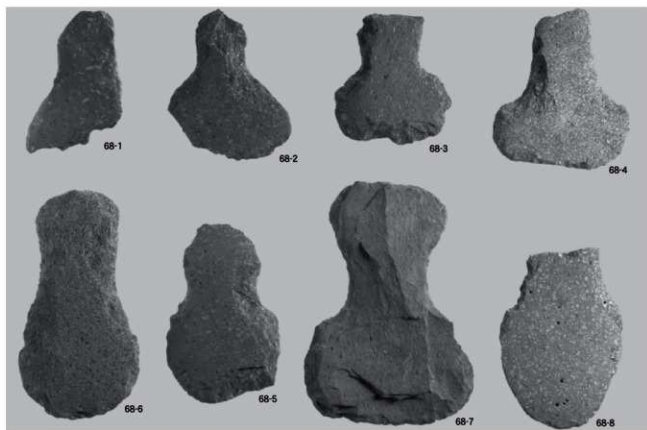




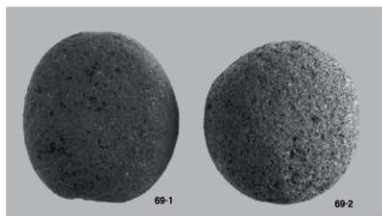
(1) 打製石斧



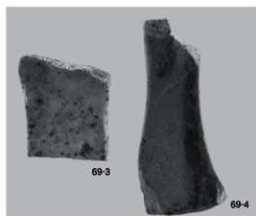
(2) 打製石斧



(1) 打製石斧



(2) 磨石類



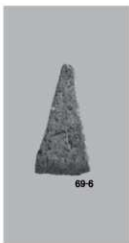
(3) 砥石



(4) 打製石斧(ミニチュア)



(5) 器種不明品



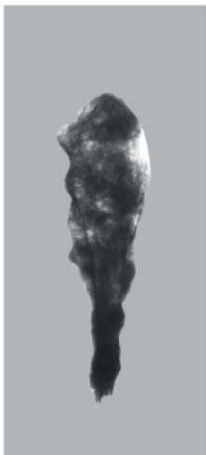
(6) 器種不明品



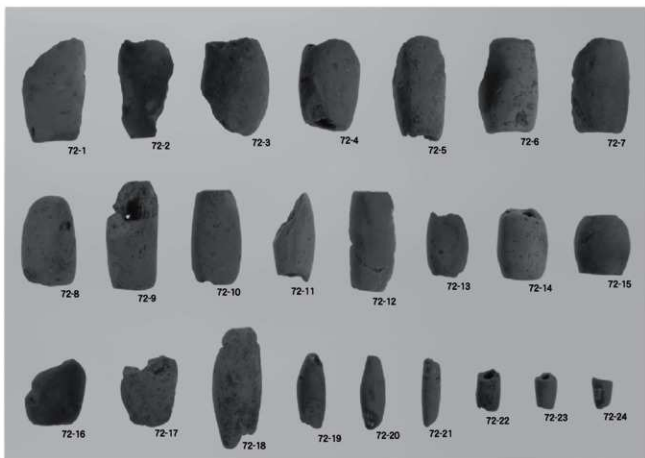
(7) 尖頭器



(1) 鉄鏃



(2) 鉄鏃 (X線画像)



(3) 土鏃

報 告 書 抄 録

ふりがな	ひがしふるいちなわていせき								
書名	東古市縄手遺跡								
副書名	鳴鹿大堰東古市地区暫定盛土工事に伴う調査								
巻次									
シリーズ名	福井県埋蔵文化財調査報告								
シリーズ番号	第94集								
編著者名	白川 綾・中森敏晴・山本孝一・御嶽貞義・森 由佳・今林信祐・北野 薫・奥井智子・中野拓郎								
編集機関	福井県教育庁埋蔵文化財調査センター								
所在地	〒910-2152 福井県福井市安波賀町4-10 TEL 0776-41-3644								
発行年月日	西暦2007年3月31日								
所収遺跡	所在地	コード		北緯 ° ' "	東経 ° ' "	調査期間	調査面積 m ²	調査原因	
		市町村	遺跡番号						
東古市縄手遺跡	福井県 吉田郡 永平寺町 東古市	18322	15042	36°	136°	19990713	I区	鳴鹿大堰 東古市地 区暫定盛 土工事	
				5'	19'	～	約360m ²		
				55"	48"	19991020	II区		
							約1,240m ²		
遺跡名	種別	主な時代	主な遺構	主な遺物		特記事項			
東古市縄手遺跡	集落跡	縄文時代 弥生～古墳時代 律令 中世	竪穴住居跡 石組遺構	縄文土器 弥生土器 粘土塊 土師器 須恵器 石器 土錘		2棟の竪穴住居跡からは、月影式土器を検出。			

福井県埋蔵文化財調査報告 第94集

東古市縄手遺跡

— 鳴鹿大塚東古市地区暫定盛土工事に伴う調査 —

平成19年3月20日 印刷

平成19年3月31日 発行

発行 福井県教育庁埋蔵文化財調査センター

〒910-2152 福井市安波賀町4-10

印刷 株式会社エクシート

〒919-0482 坂井市春江町中庄61-32
