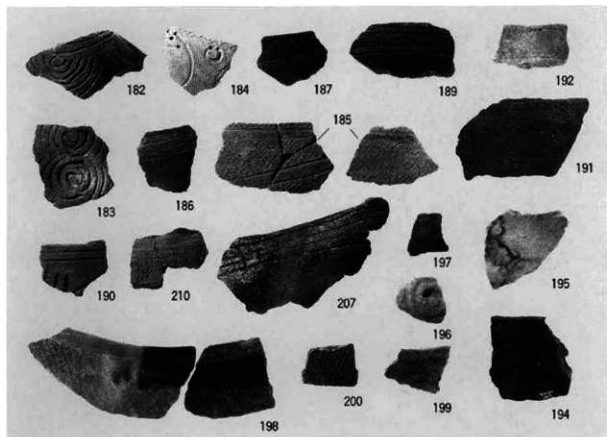
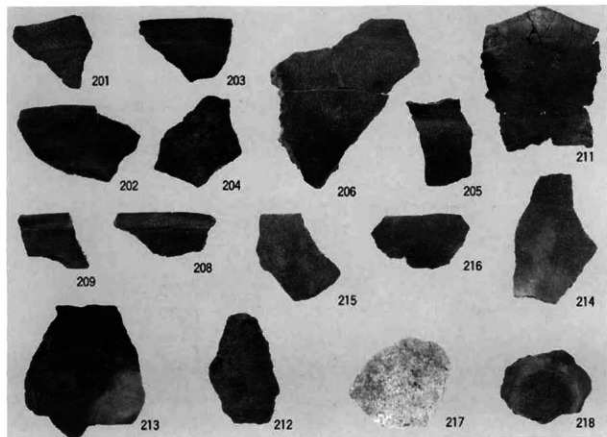


南区縄文下層 遺構出土土器  
 SK452 : A, SK454 : B  
 SK455 : C D, SK456 : 173・E・F  
 SK457 : 175・176, SK458 : G~L  
 SK460 : 177・178・M~O  
 SK462 : 180・181・P~U  
 SK464 : V



南区縄文下層 SD451出土土器

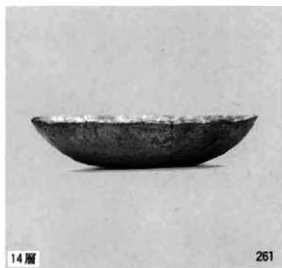


南区縄文下層 SD451出土土器



SD451

188



14層

261



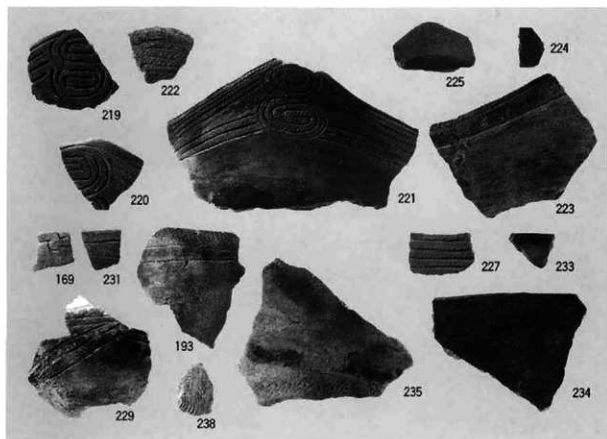
23層

232

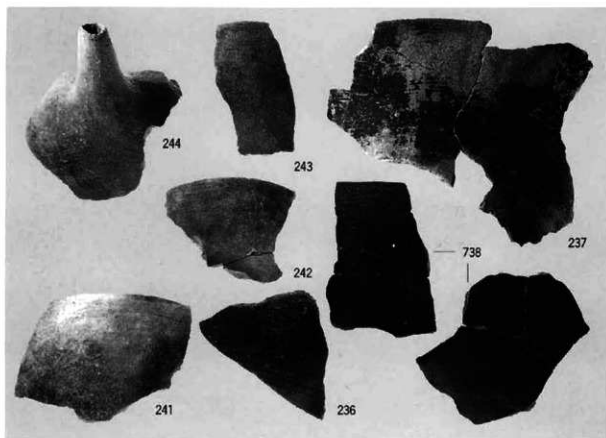


23層

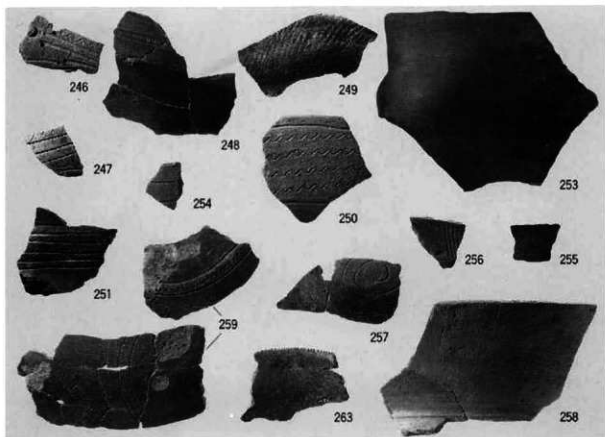
226



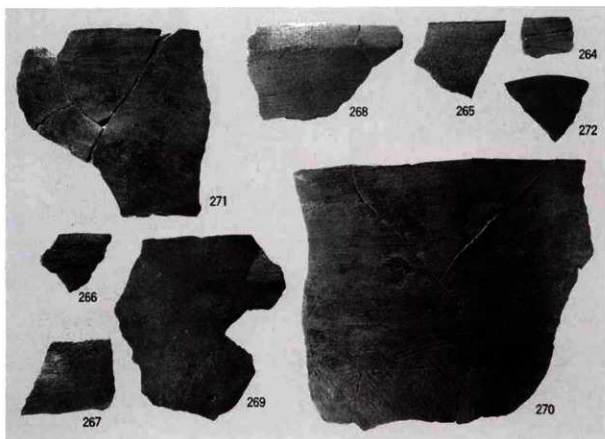
南区绳文下層 23層出土土器



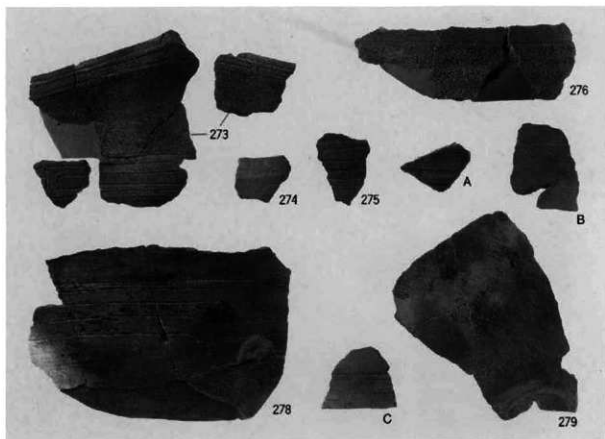
南区绳文下層 23層出土土器



南区縄文下層 14・15・23層出土土器



南区縄文下層 12・19層出土土器



南区绳文下層 13・11層出土土器



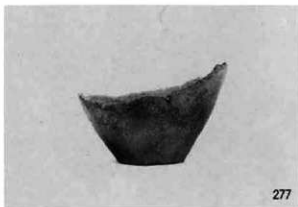
311



304



346

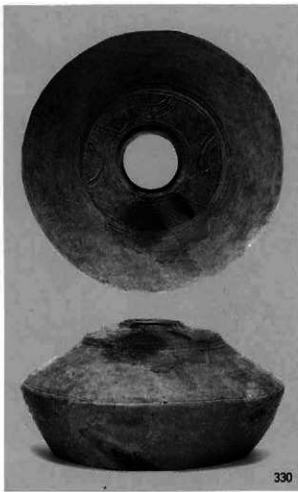


277

南区绳文下層 9層出土土器



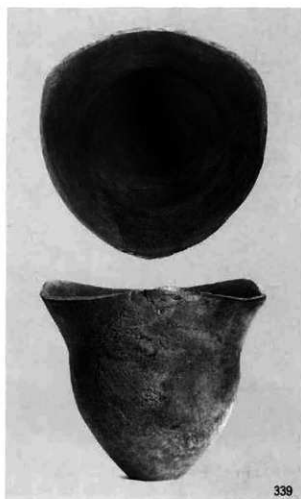
327



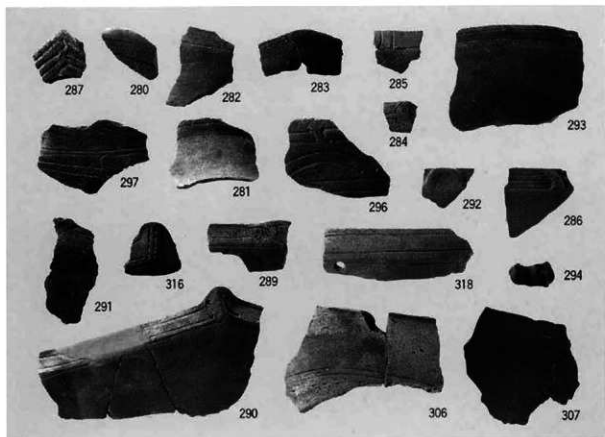
330



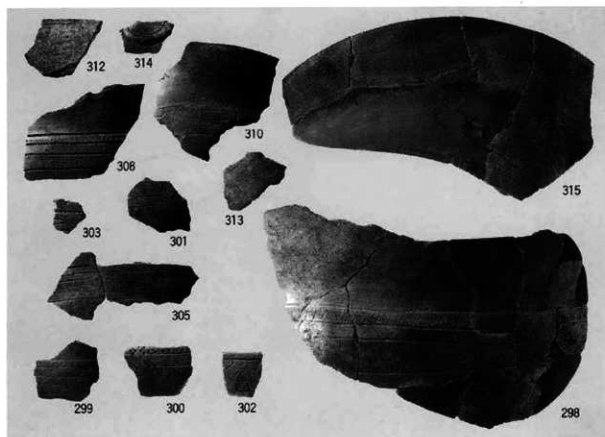
331



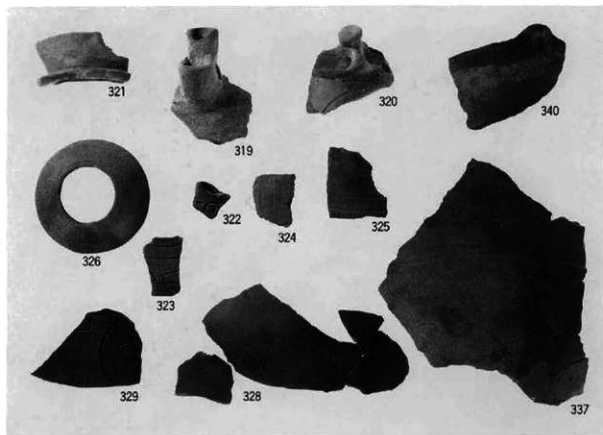




南区縄文下層 9層出土土器



南区縄文下層 9層出土土器

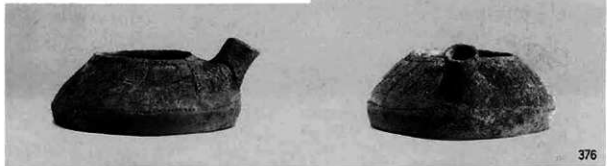
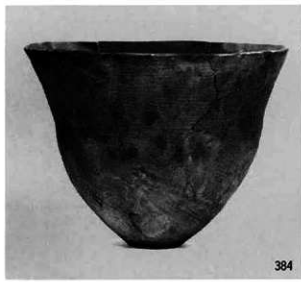


南区縄文下層 9層出土土器

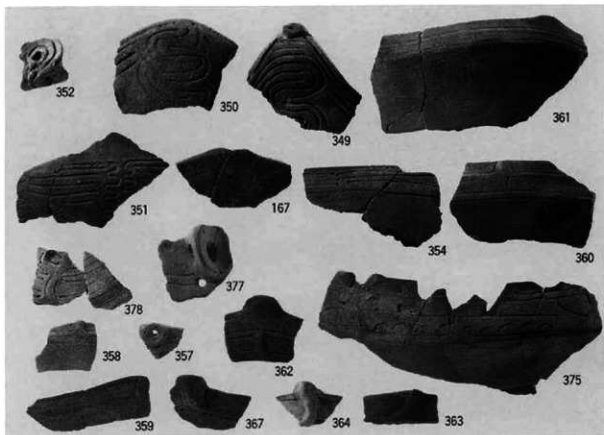


南区縄文下層 9層出土土器

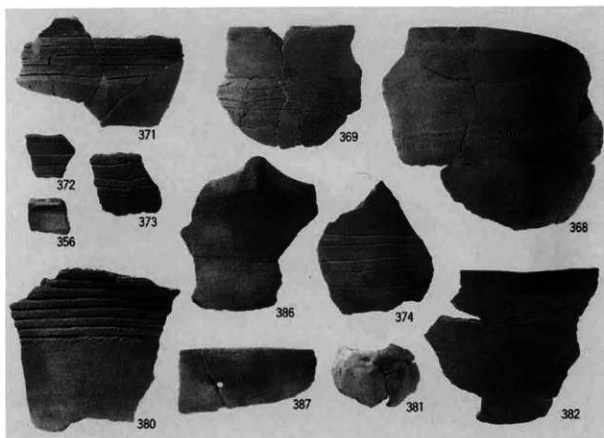




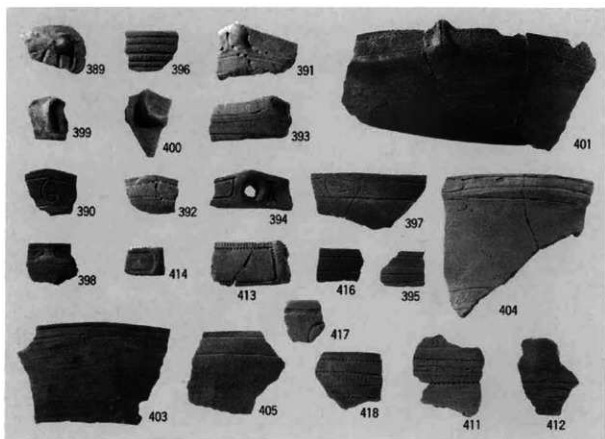
南区縄文下層 8・10層出土土器 (N・O20~22区)



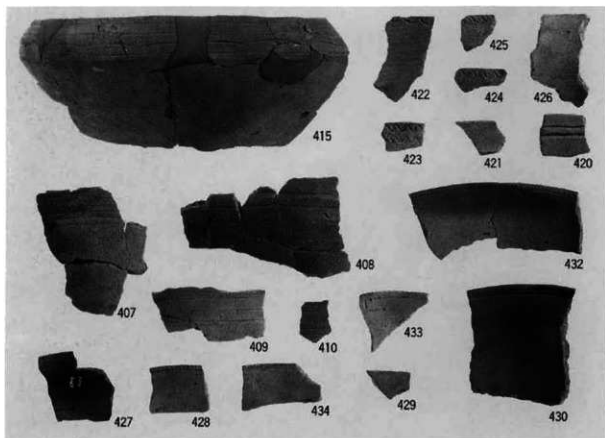
南区縄文下層 8・10層出土土器 (N・O20~22区)



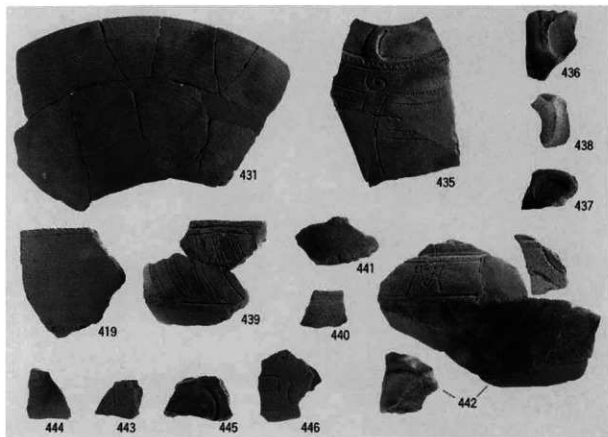
南区縄文下層 8・10層出土土器 (N・O20~22区)



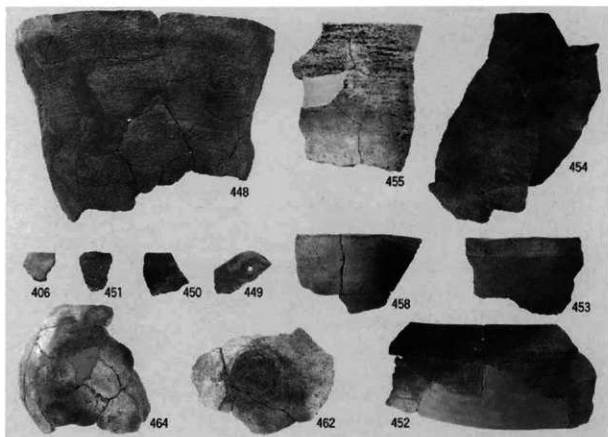
南区縄文下層 8・10層出土土器 (M20区最下部)



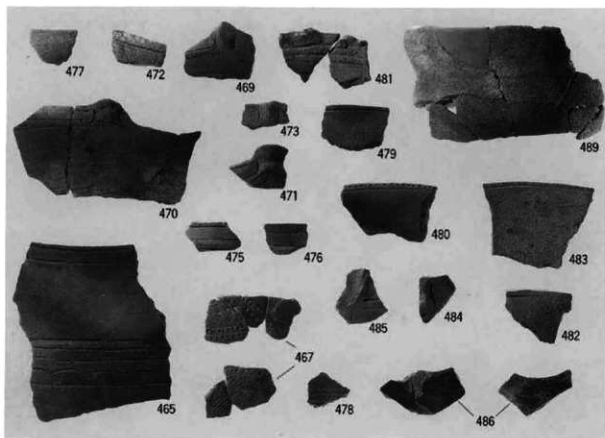
南区縄文下層 8・10層出土土器 (M20区最下部)



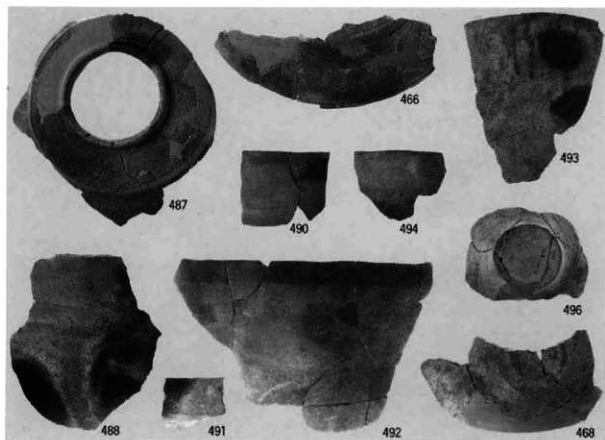
南区绳文下層 8・10層出土土器 (M20区最下部)



南区绳文下層 8・10層出土土器 (M20区最下部)

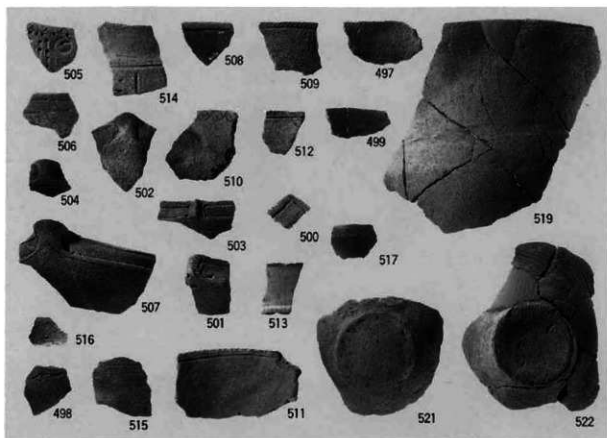


南区縄文下層 8・10層出土土器 (M20区8・7回目)

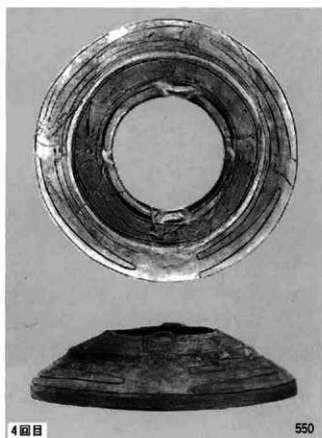


南区縄文下層 8・10層出土土器 (M20区8・7回目)





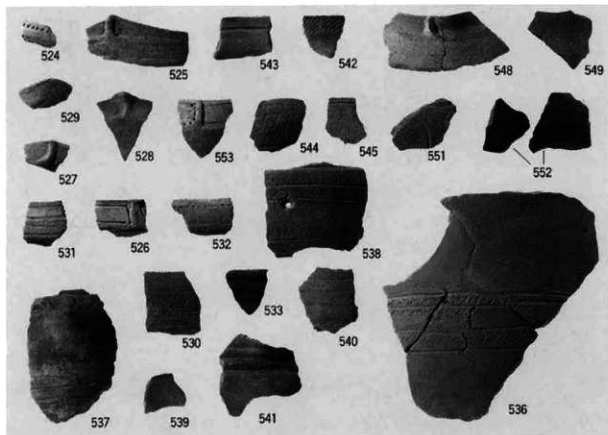
南区縄文下層 8・10層出土土器 (M20区6・5回目)



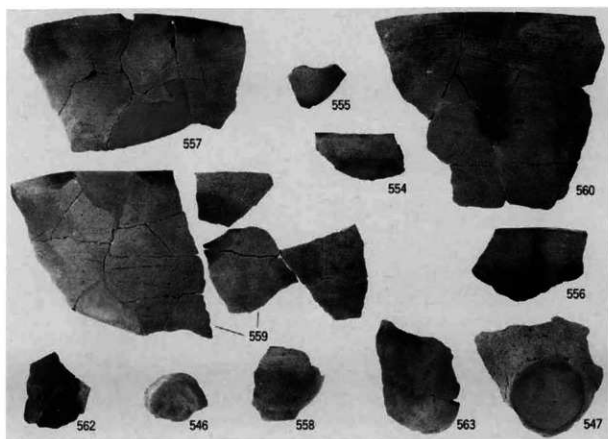
南区縄文下層 8・10層出土土器 (M20区)



南区縄文下層 8・10層出土土器 (M20区4回目)

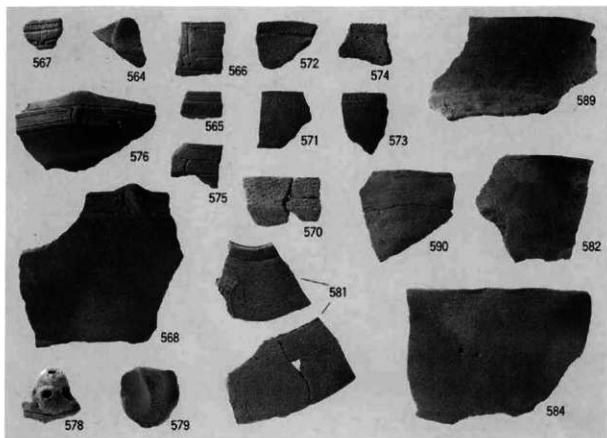


南区縄文下層 8・10層出土土器 (M20区4回目)

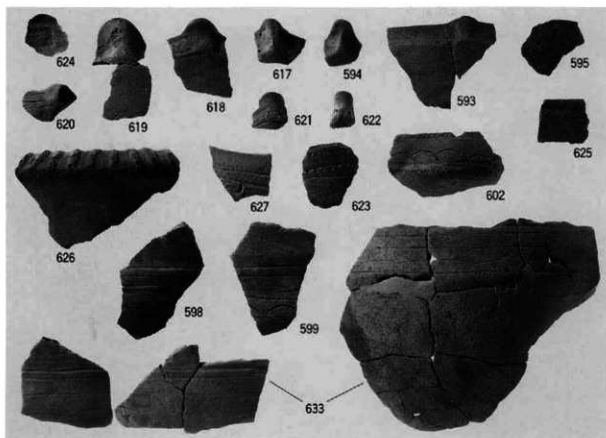


南区縄文下層 8・10層出土土器 (M20区4回目)

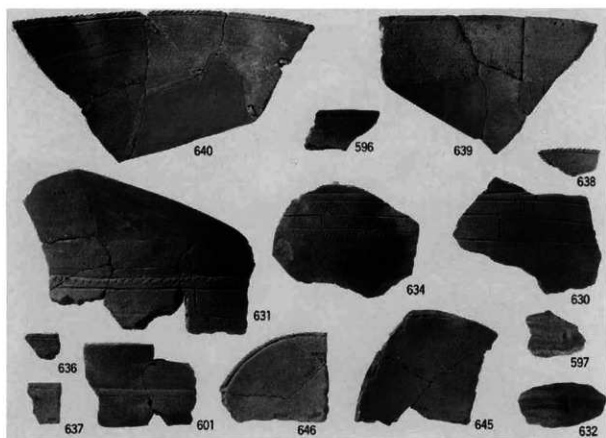




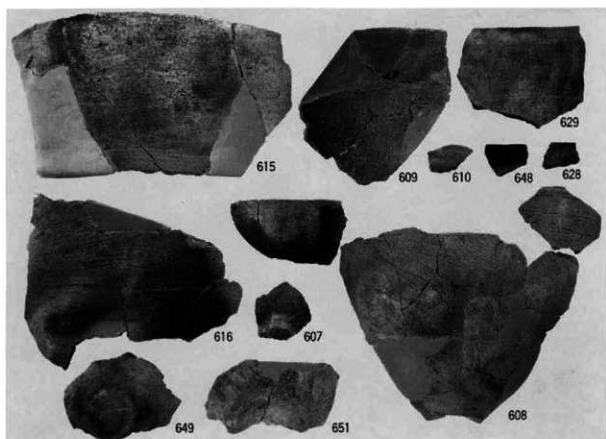
南区縄文下層 8・10層出土土器 (M20区3回目)



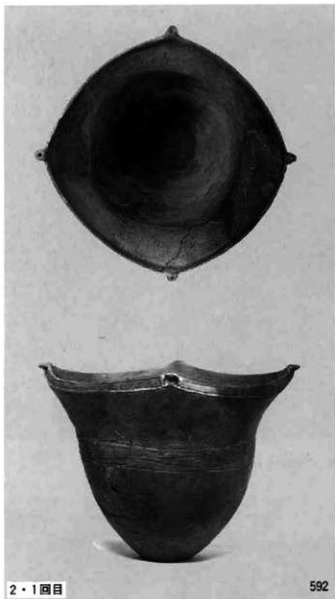
南区縄文下層 8・10層出土土器 (M20区2・1回目)



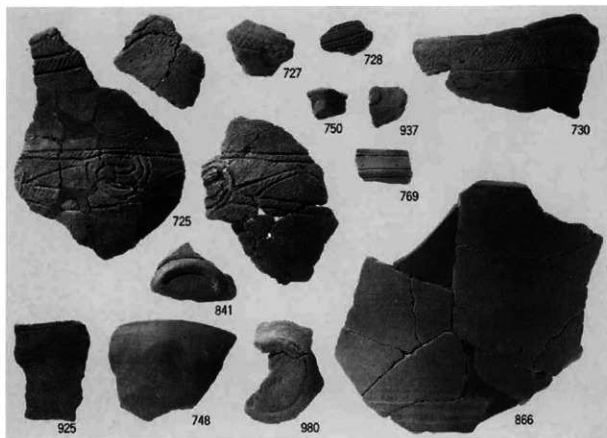
南区縄文下層 8・10層出土土器 (M20区2・1回目)



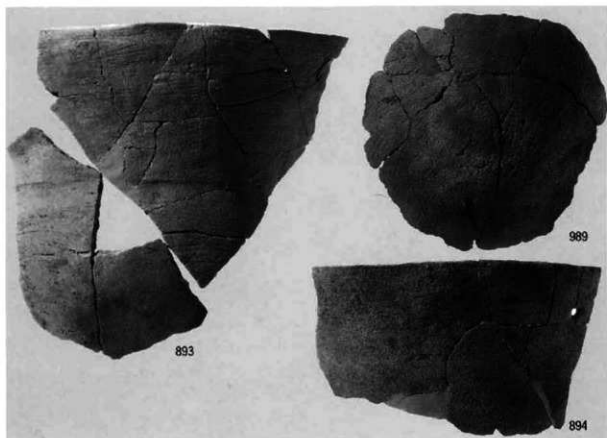
南区縄文下層 8・10層出土土器 (M20区2・1回目)



南区縄文下層 8・10層出土土器 (M20区)

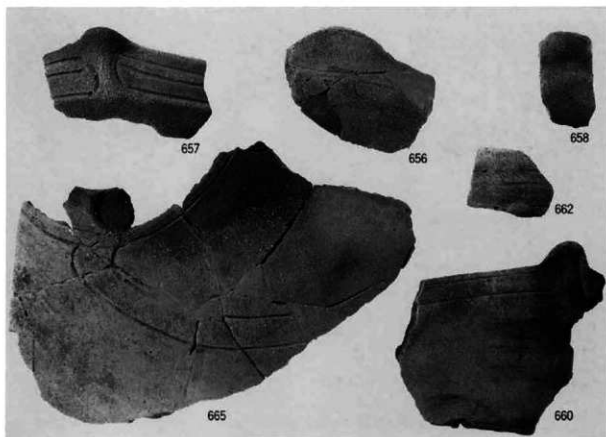


南区縄文下層 8・10層出土土器 (M20区)



南区縄文下層 8・10層出土土器 (M20区)

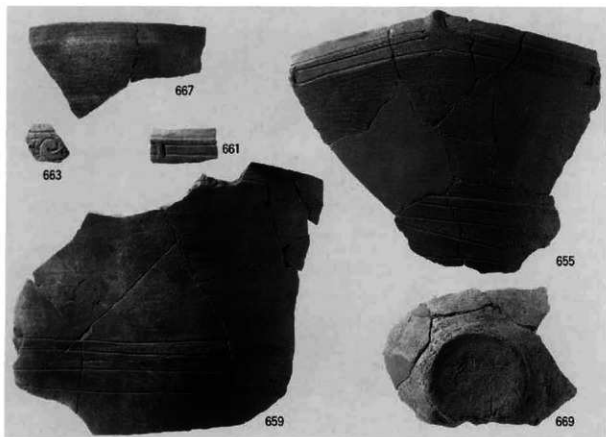




南区縄文下層 8・10層出土土器 (L20区7回目)



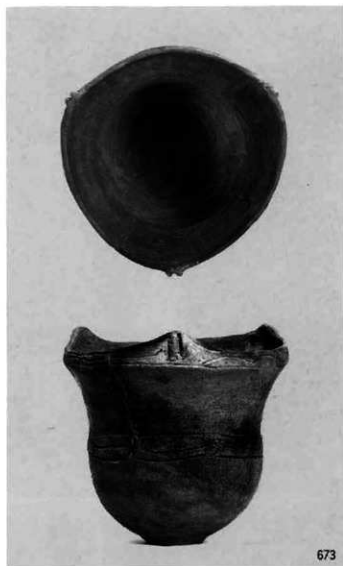
南区縄文下層 8・10層出土土器 (L20区7回目)



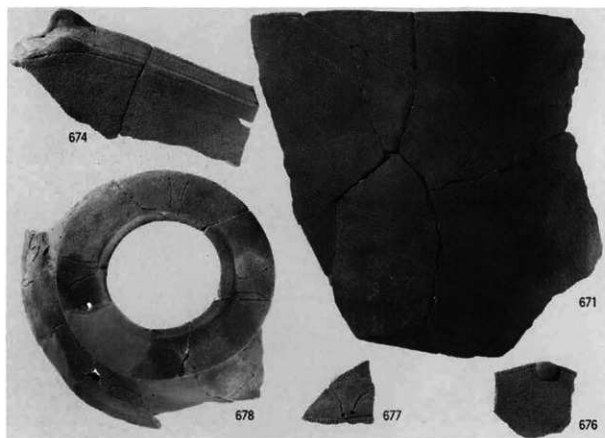
南区縄文下層 8・10層出土土器 (L20区7回目)



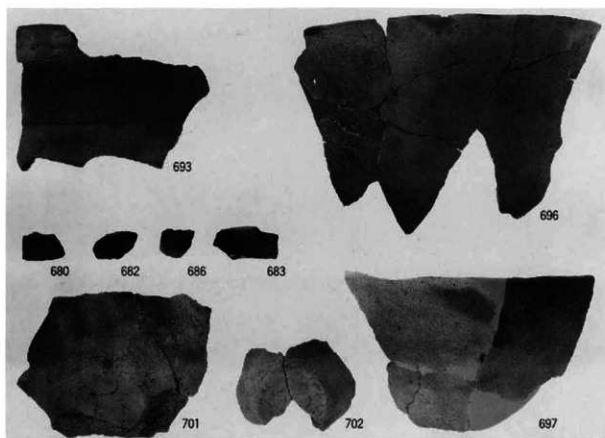
南区縄文下層 8・10層出土土器 (L20区)



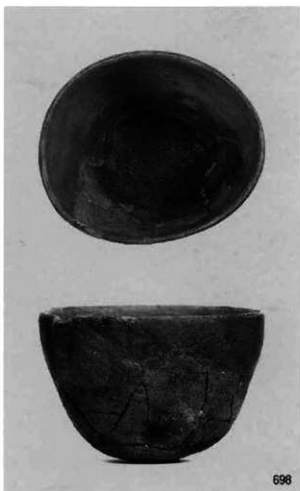
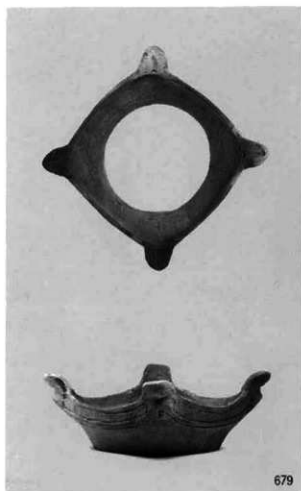
南区縄文下層 8・10層出土土器 (L20区5回目)

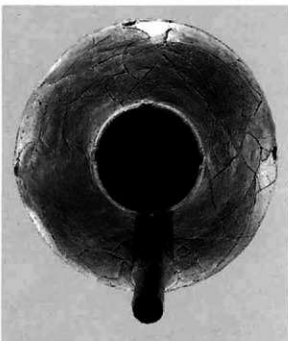
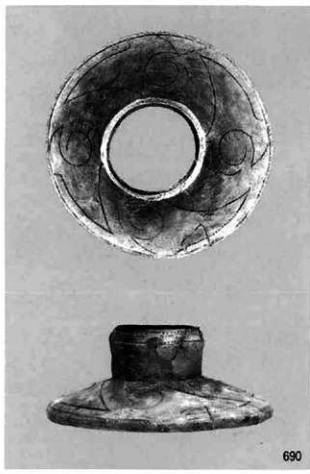


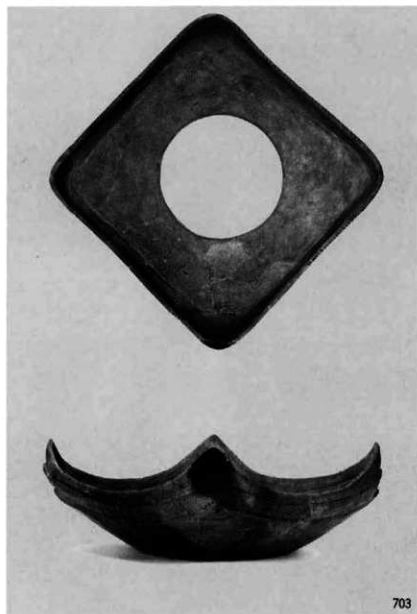
南区縄文下層 8・10層出土土器 (L20区6・5回目)



南区縄文下層 8・10層出土土器 (L20区4回目)







南区縄文下層 8・10層出土土器 (L20区3回目)







713



717



718



4回目

695

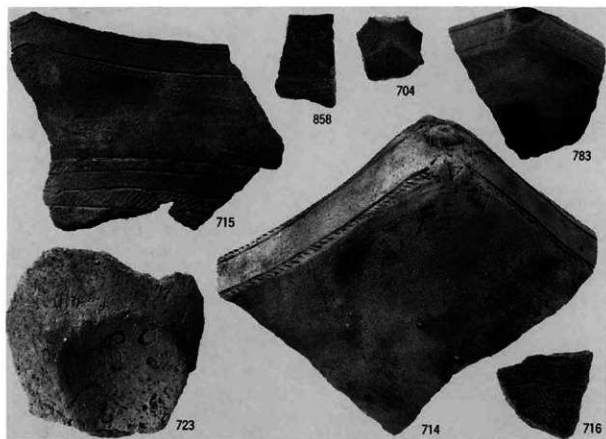


722

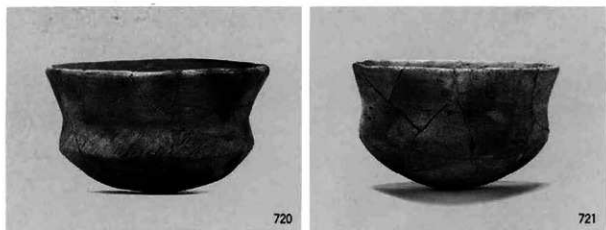


4回目

689



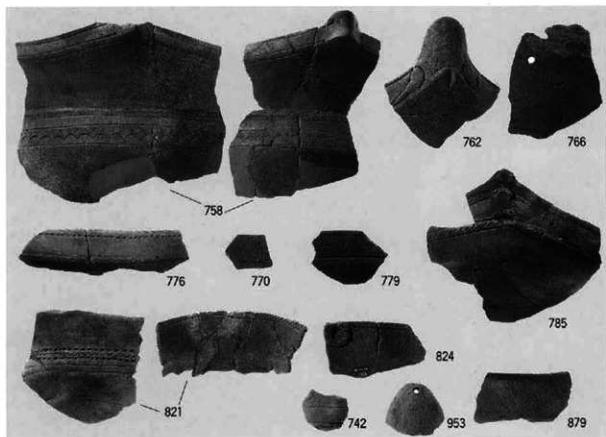
南区縄文下層 8・10層出土土器 (L20区3~1回目)



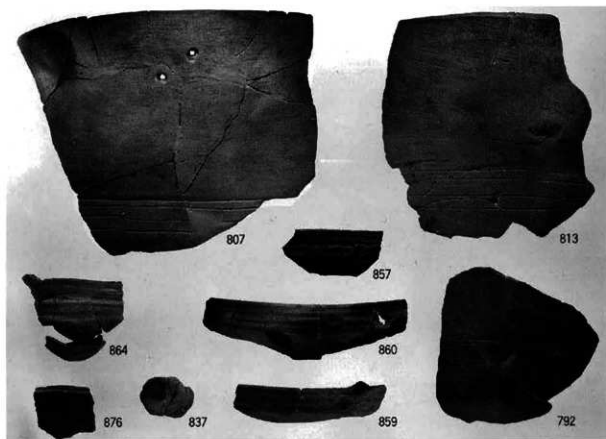
南区縄文下層 8・10層出土土器 (L20区2回目)



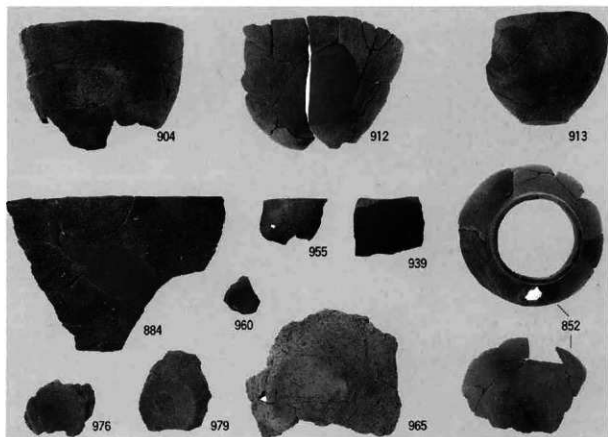
南区縄文下層 8・10層出土土器 (L21区2回目)



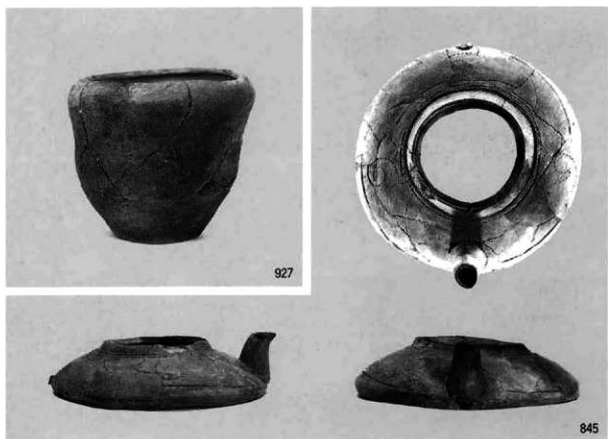
南区縄文下層 8・10層出土土器 (L21区2・1回目)



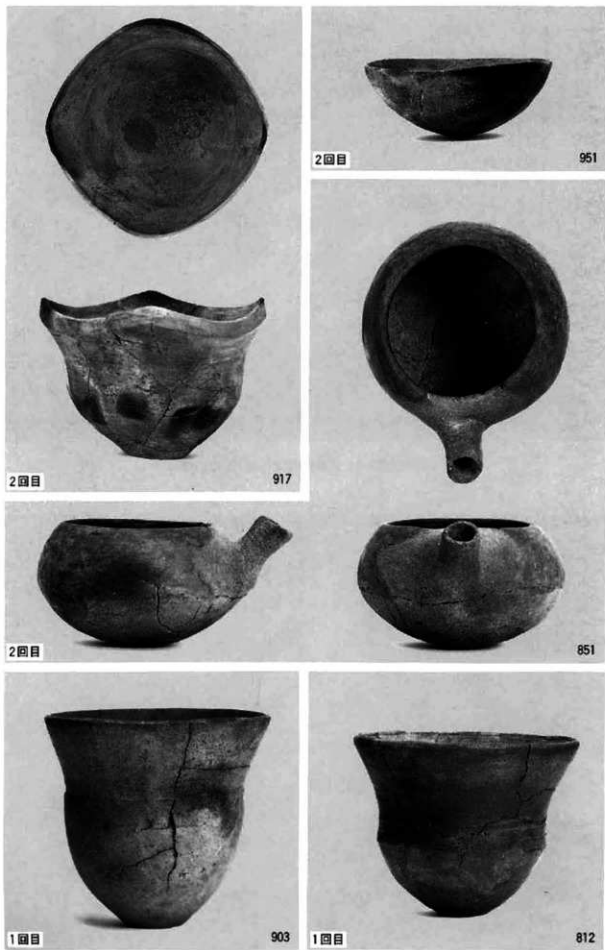
南区縄文下層 8・10層出土土器 (L21区2・1回目)



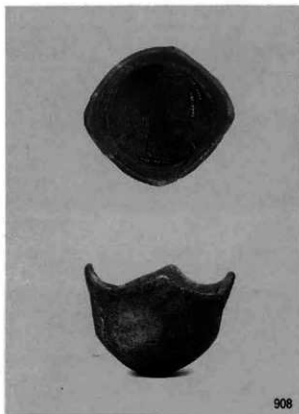
南区縄文下層 8・10層出土土器 (L21区2・1回目)



南区縄文下層 8・10層出土土器 (L21区2回目)



南区縄文下層 8・10層出土土器 (L21区2・1回目)



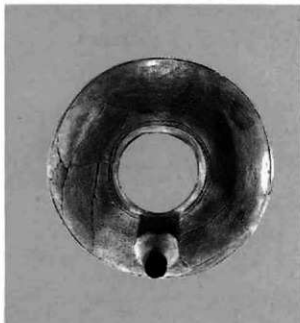
908



688



830



849



(K21区1個目)







(L21区)



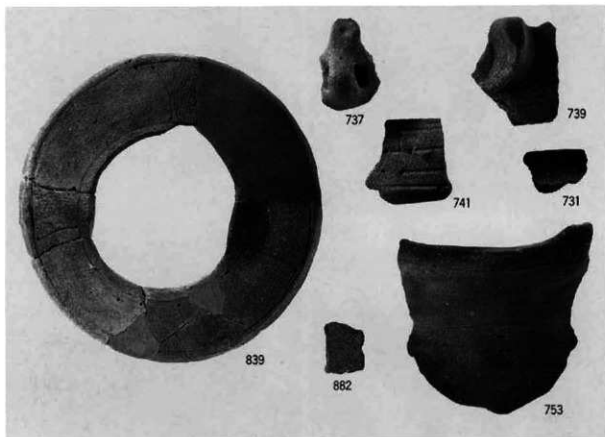
(K・L21区)



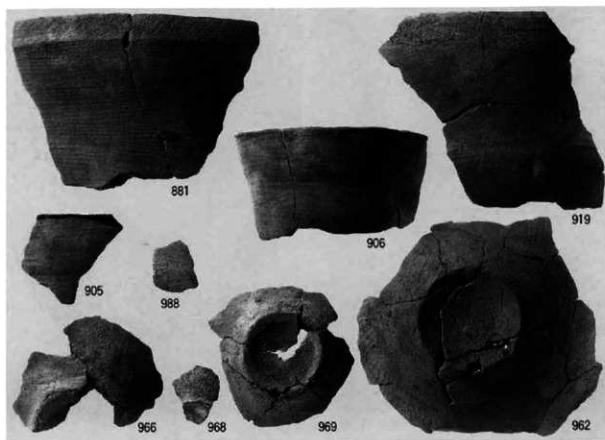
(L22区1回目)



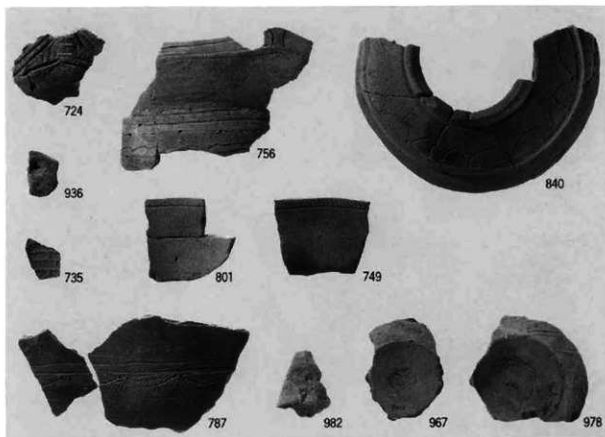
(K20区)



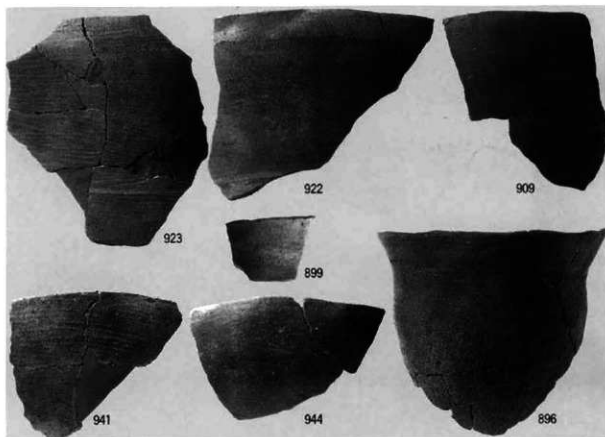
南区縄文下層 8・10層出土土器 (K20区7~4回目)



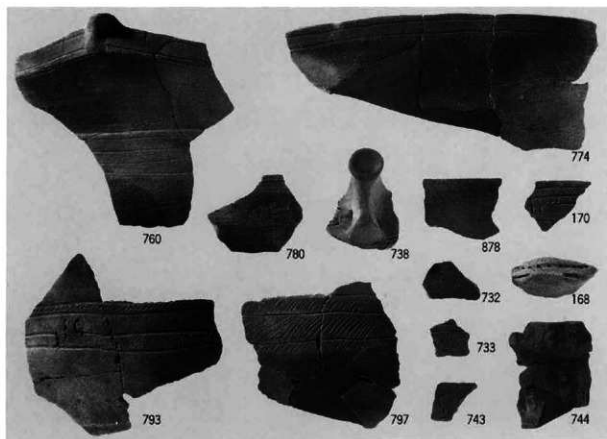
南区縄文下層 8・10層出土土器 (K20区7~4回目)



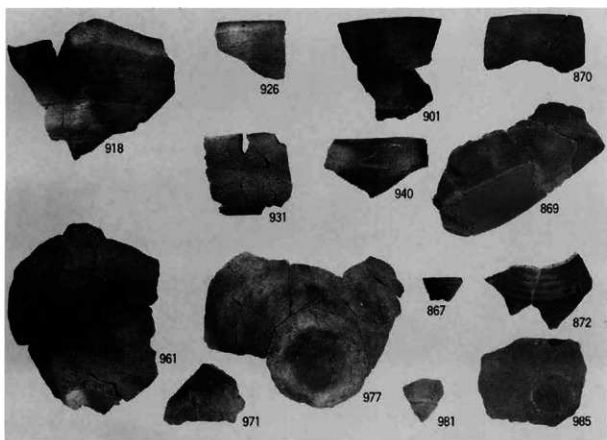
南区縄文下層 8・10層出土土器 (K20区3~1回目)



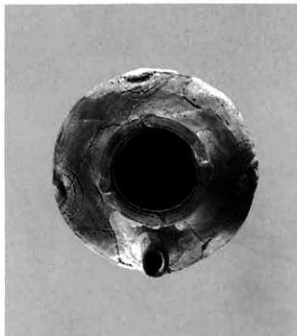
南区縄文下層 8・10層出土土器 (K20区3~1回目)



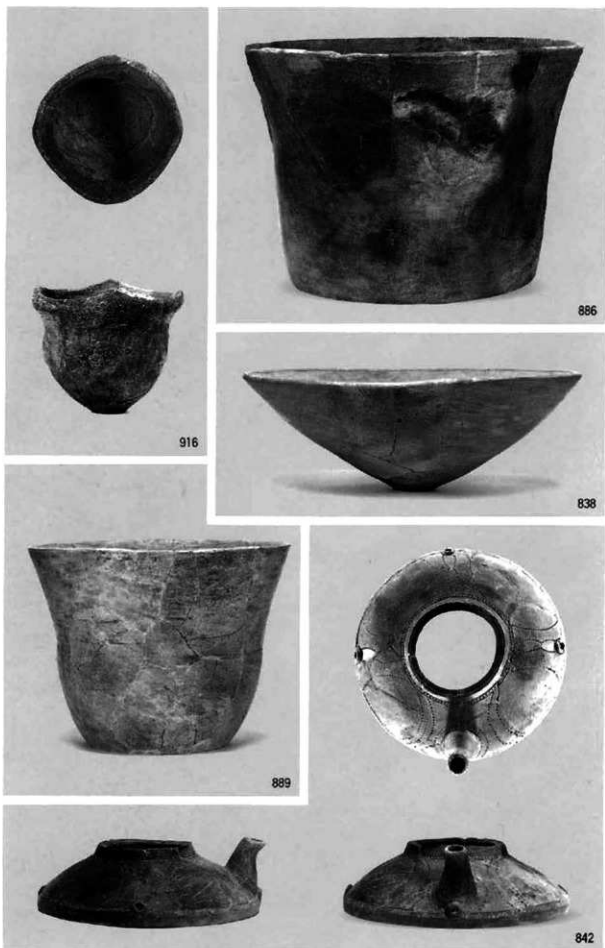
南区縄文下層 8・10層出土土器 (K20区)



南区縄文下層 8・10層出土土器 (K20区)



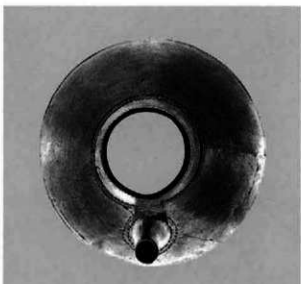
855



南区縄文下層 8・10層出土土器 (K21区2回目)



924



850

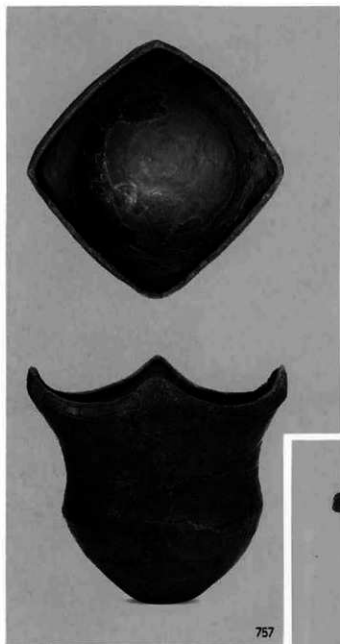


892



800

南区縄文下層 8・10層出土土器 (K21区2回目)

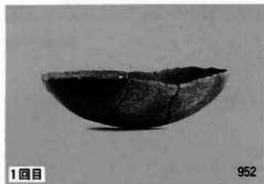


757

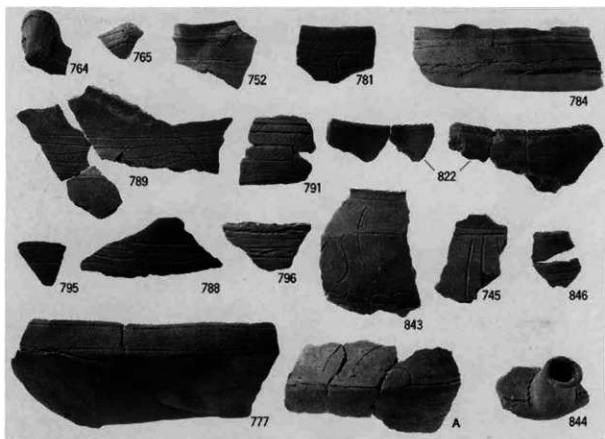


759

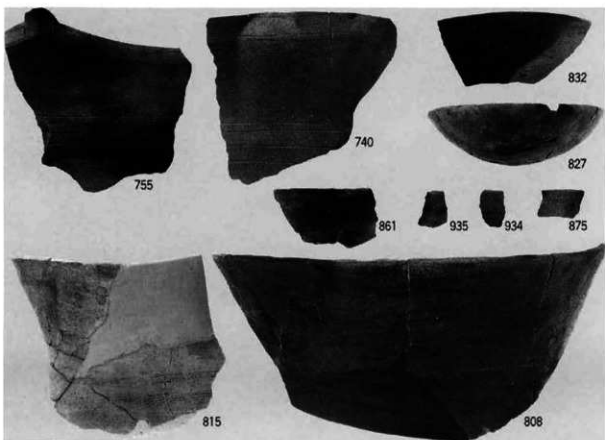




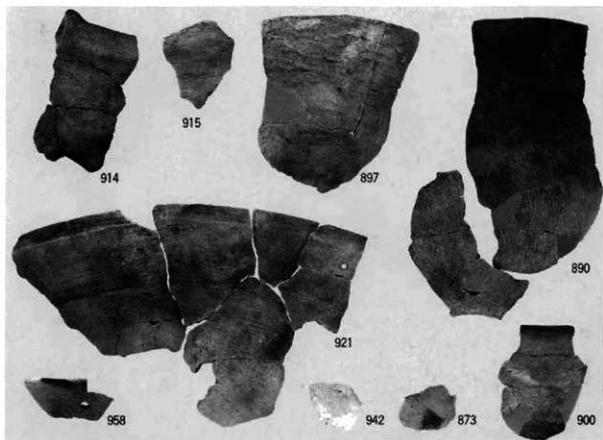
南区縄文下層 8・10層出土土器 (K21区)



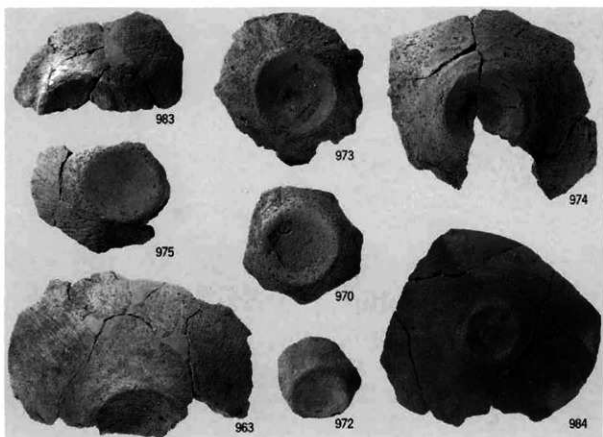
南区縄文下層 8・10層出土土器 (K21区)



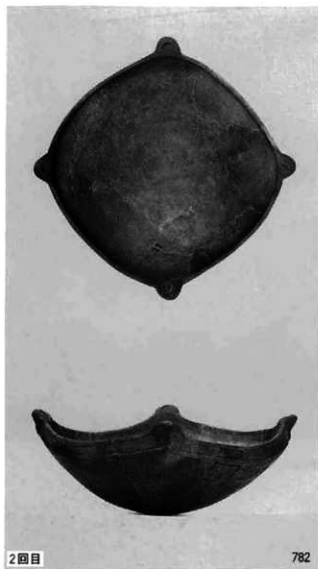
南区縄文下層 8・10層出土土器 (K21区)



南区縄文下層 8・10層出土土器 (K21区)



南区縄文下層 8・10層出土土器 (K21区)





768



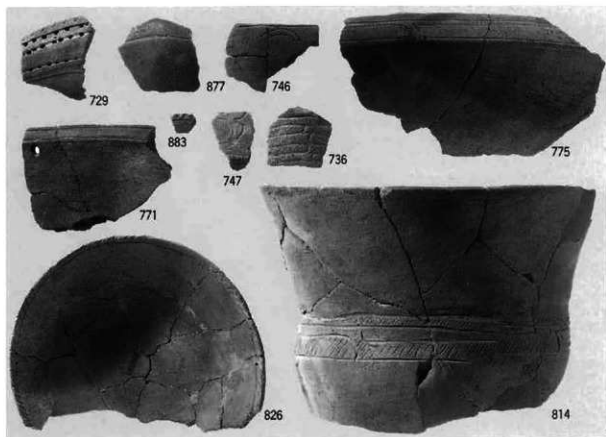
2回目

929

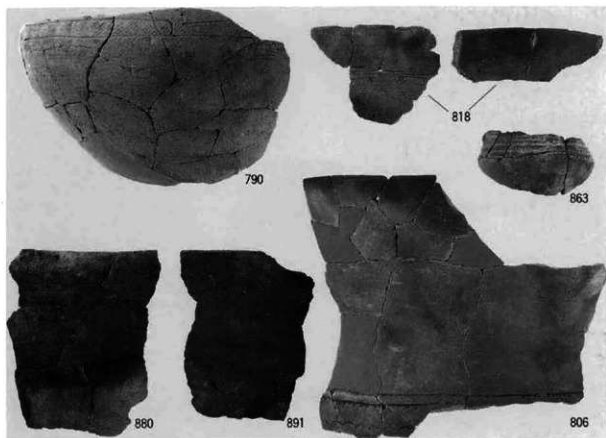


848

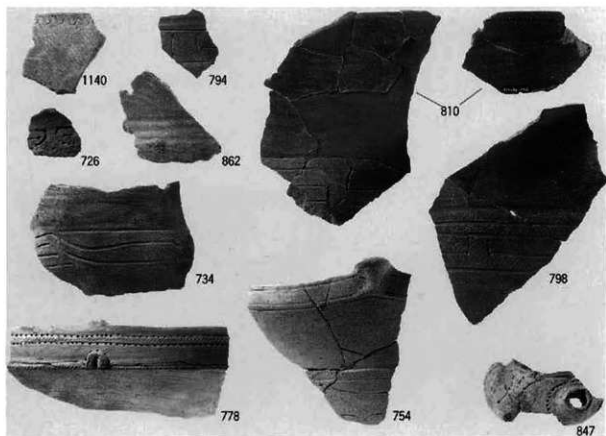




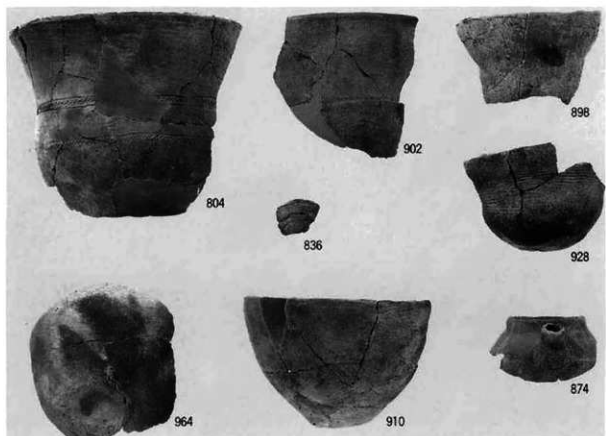
南区縄文下層 8・10層出土土器 (K・L22区)



南区縄文下層 8・10層出土土器 (K・L22区)

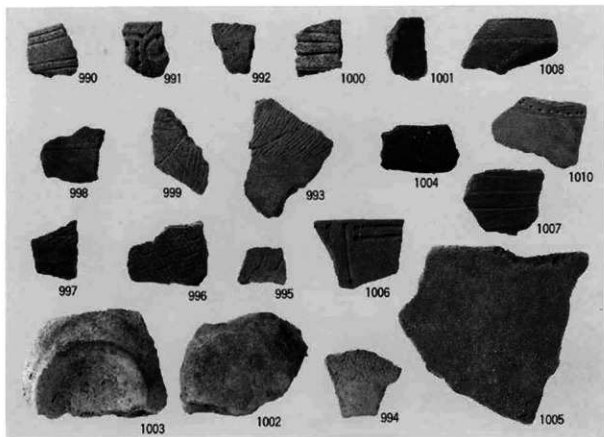


南区縄文下層 8・10層出土土器（その他）

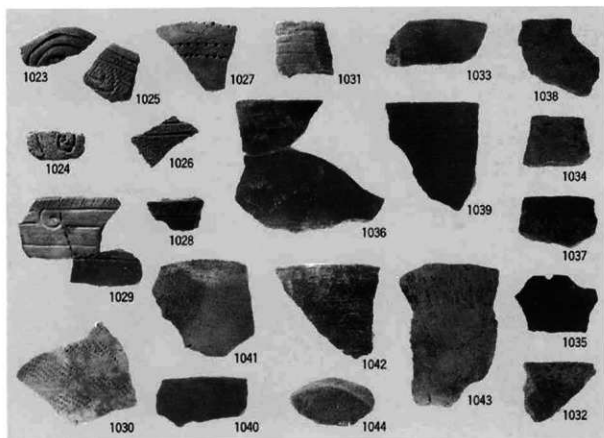


南区縄文下層 8・10層出土土器（その他）

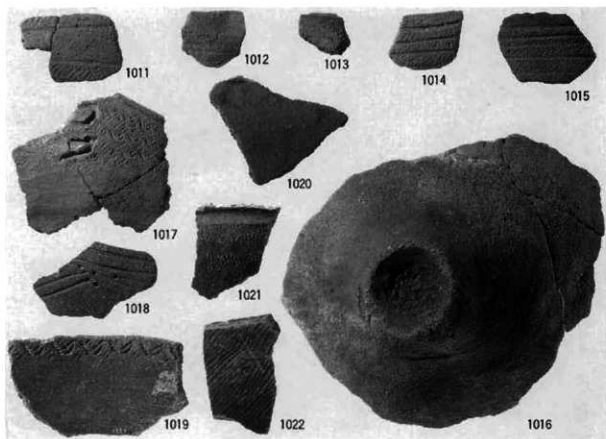




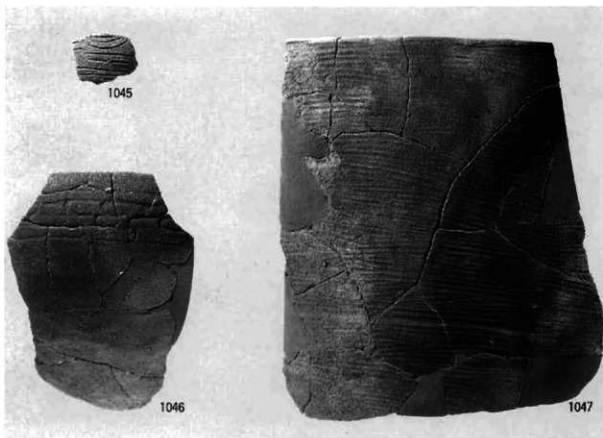
北・中央区縄文下層遺構 SK410・411出土土器



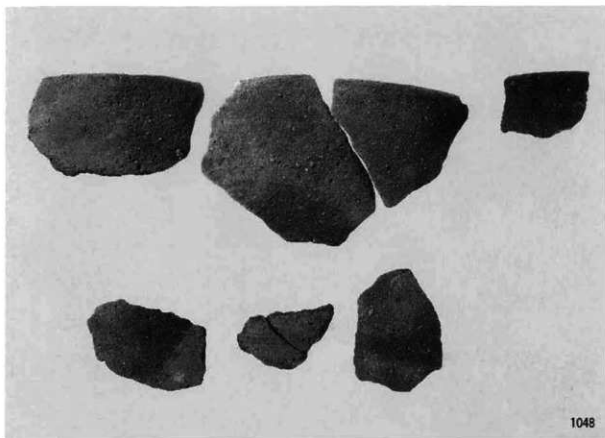
北・中央区縄文下層遺構 SK412出土土器



北・中央区縄文下層遺構 SK413・414出土土器

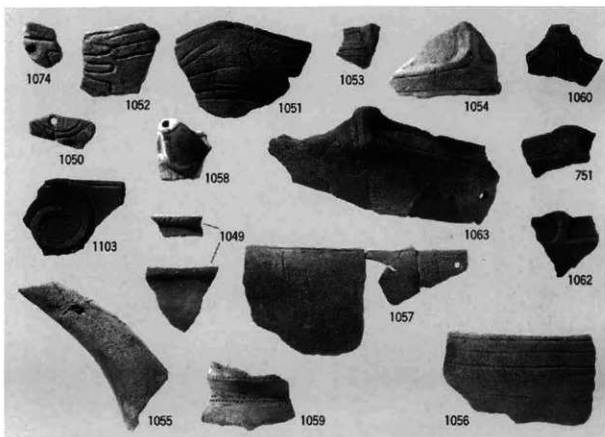


北・中央区縄文下層 出土土器

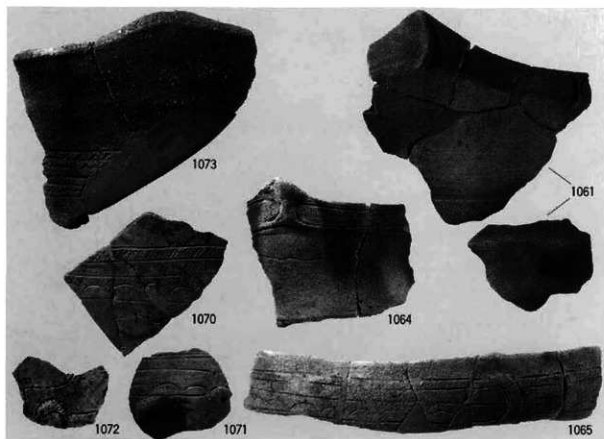


1048

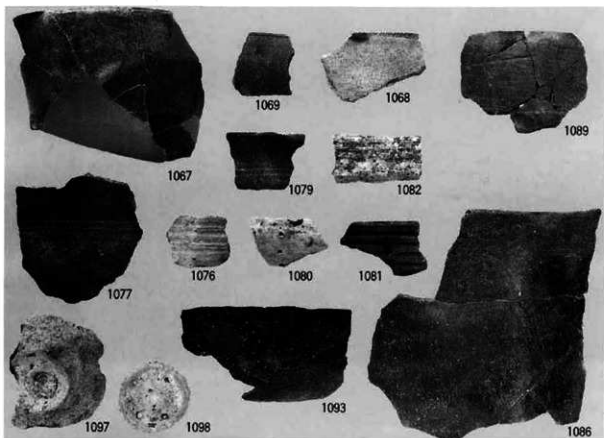
縄文中層遺構 SK336出土土器



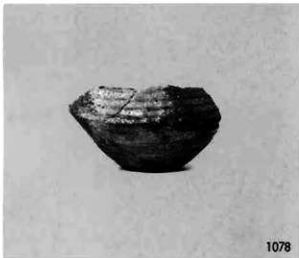
縄文中層 出土土器

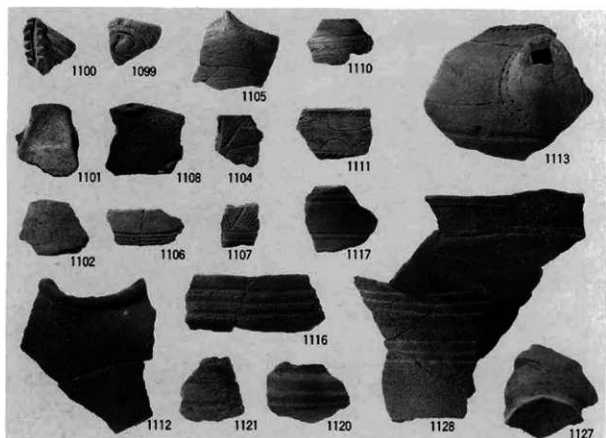


縄文中層 出土土器

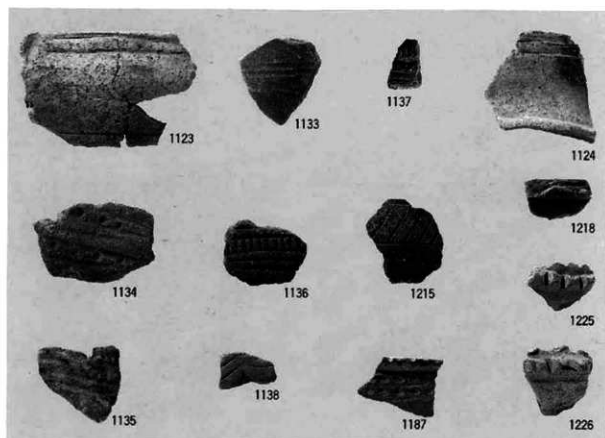


縄文中層 出土土器





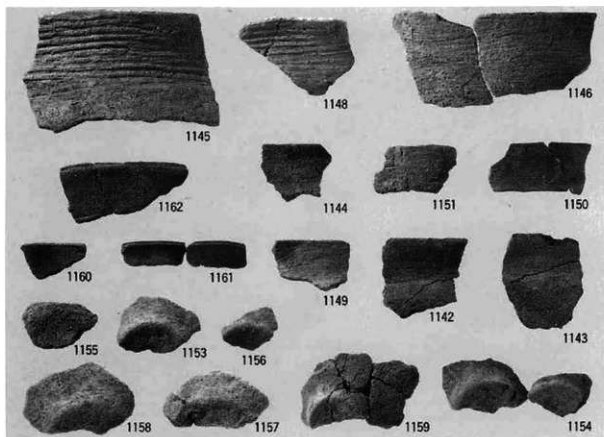
縄文上層 出土土器



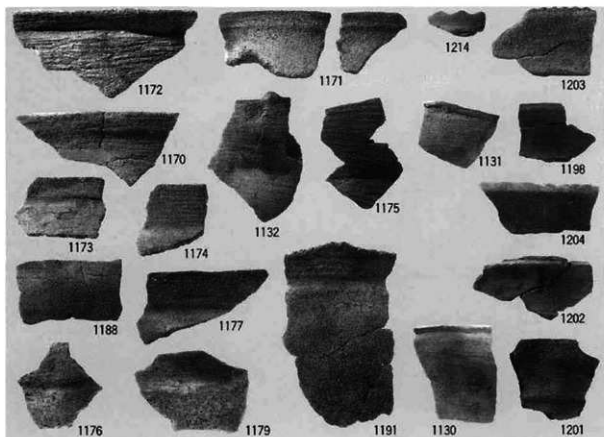
縄文上層 縄文後期末～晩期の土器



縄文上層 縄文晩期前半～中葉の土器 埋壺、埋設土器、その他

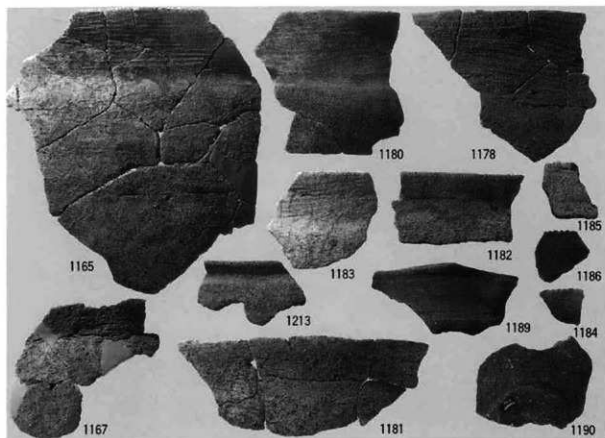


縄文上層 縄文晩期前葉～中葉の土器 SH201内SK201出土土器

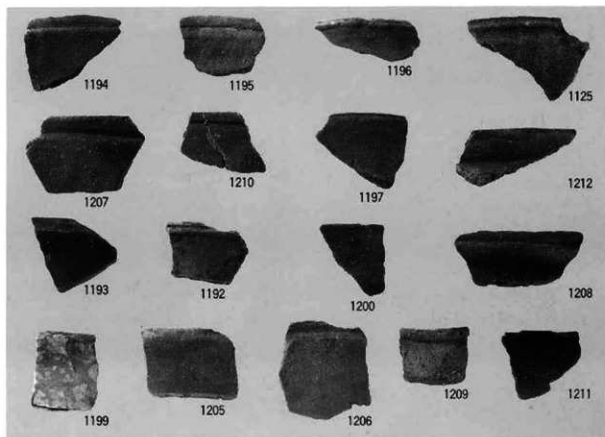


縄文上層 縄文晩期前葉～中葉の土器 深鉢、浅鉢

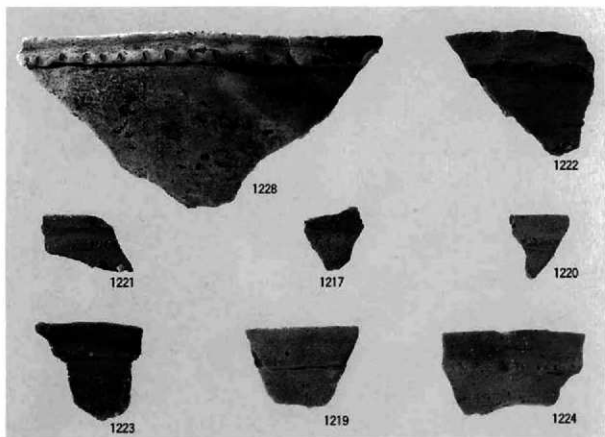




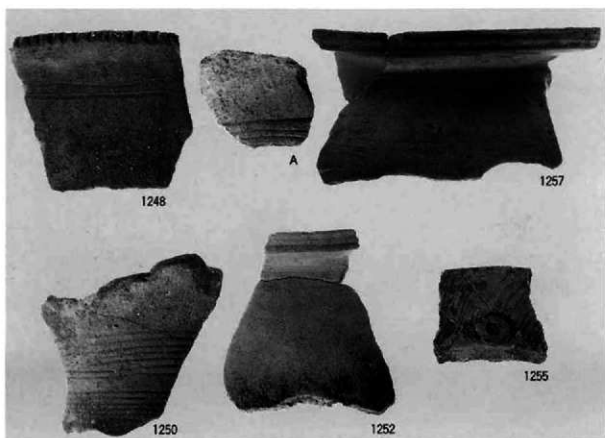
縄文上層 縄文晩期前葉～中葉の土器 深鉢、浅鉢



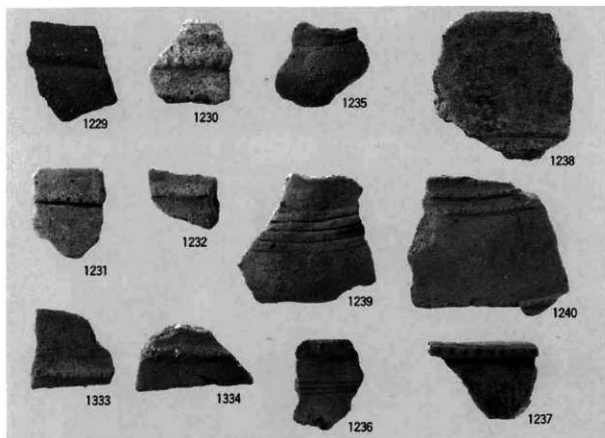
縄文上層 縄文晩期前葉～中葉の土器 浅鉢



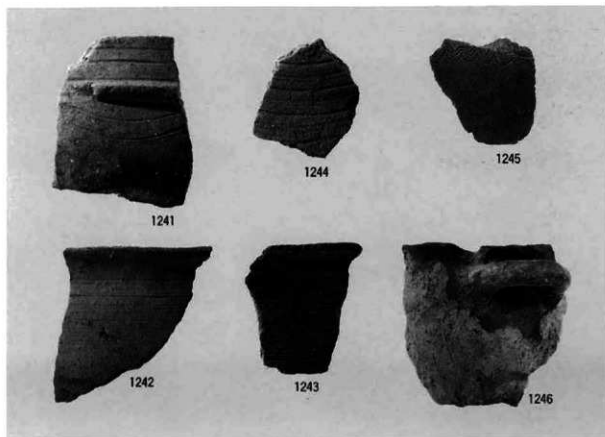
南区縄文上層 縄文晩期後半凸帯文土器



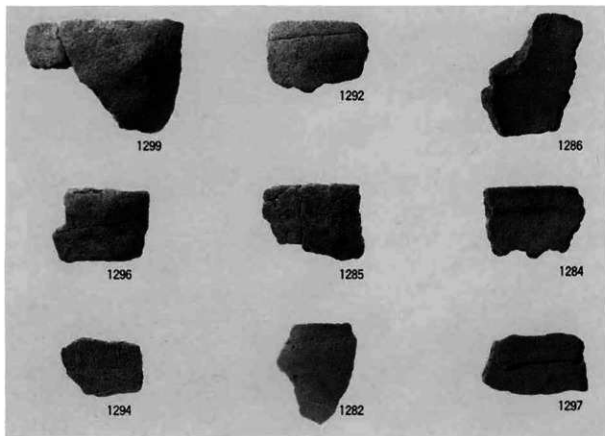
弥生前期～中期の土器



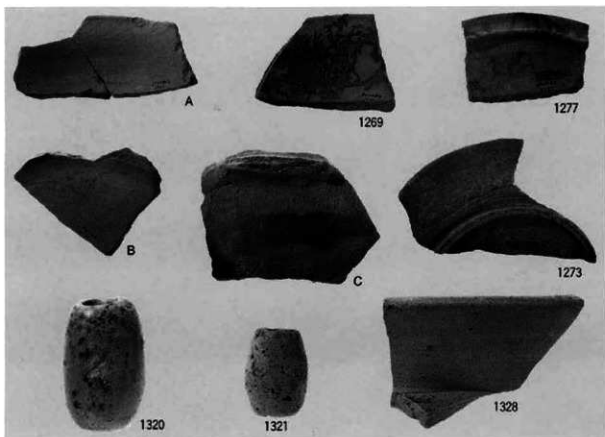
SD107出土土器 縄文晩期後半～弥生前期



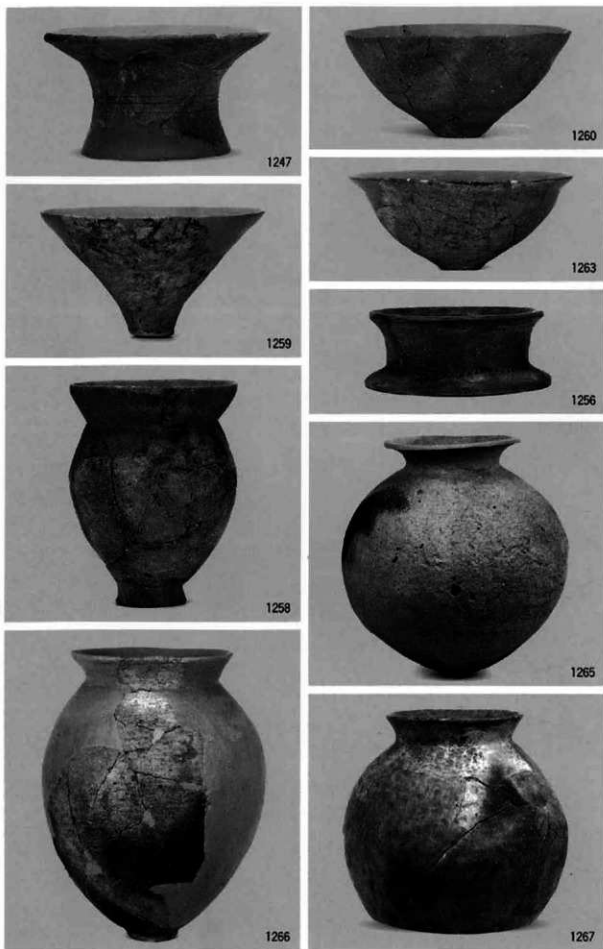
SD107出土土器 弥生前期～中期



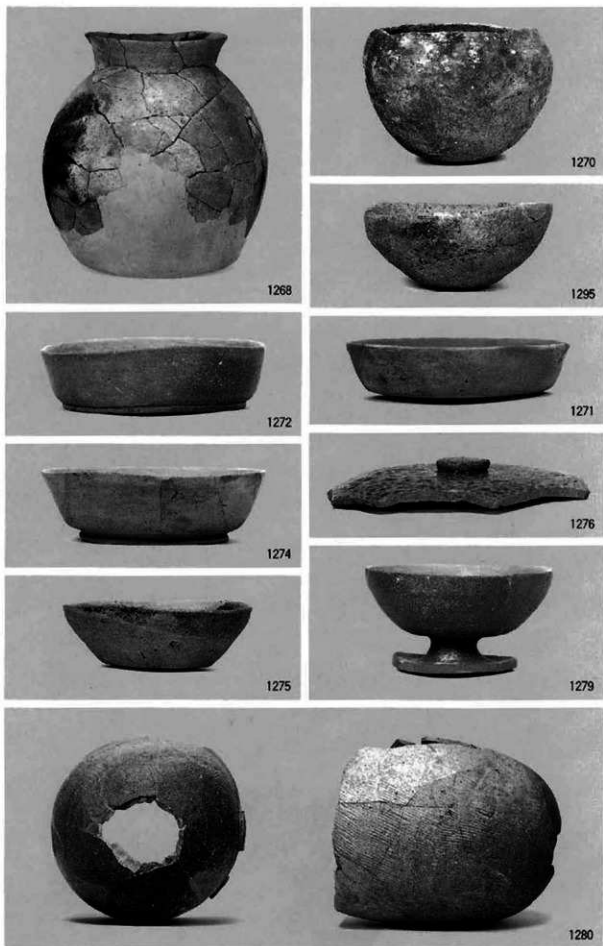
北区SD105出土 製塩土器



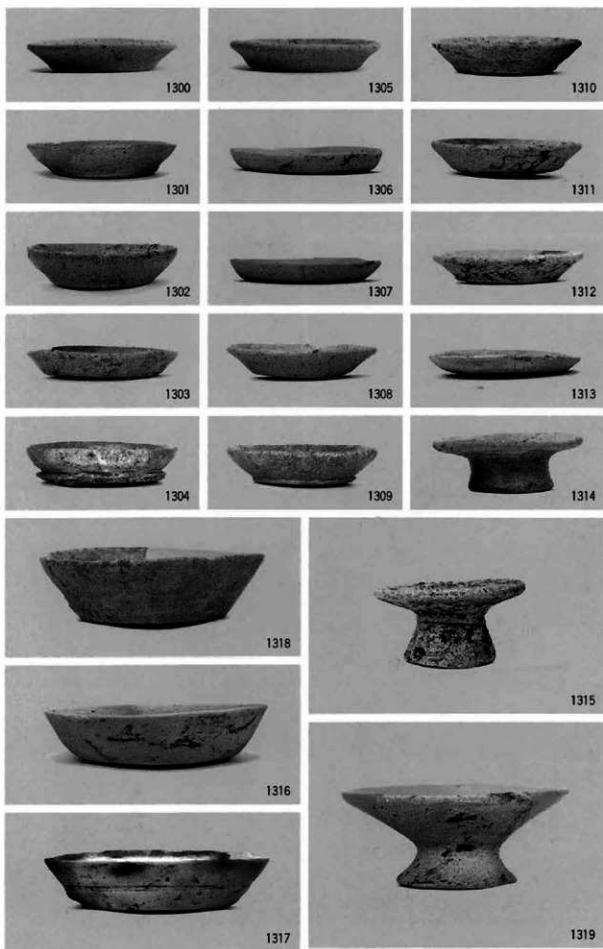
北区SR101出土 土罽器环、須恵器壺・坏、SD001出土 土罽・南区中世面出土 土罽



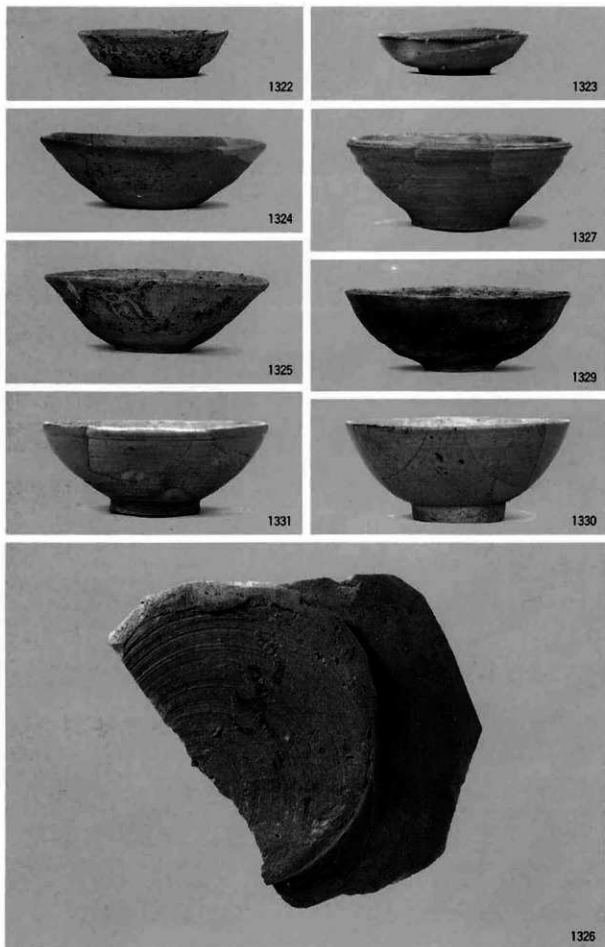
弥生前期壺・弥生後期壺・甕・鉢・甌、古墳前期土師器甕



古墳前期土師器甕、奈良土師器無頸查・坏・製塩土器、須恵器坏・高杯・横瓶



土師器小皿・托・环



須恵器小皿・楕・鉢・墨書土器、瓦器椀、白磁碗





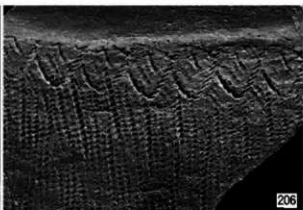
LR 充填縄文



RL 磨消縄文 (直前段4本摺)



RL 結節縄文



RL 結び縄



LR 磨消縄文 (直前段3本摺)



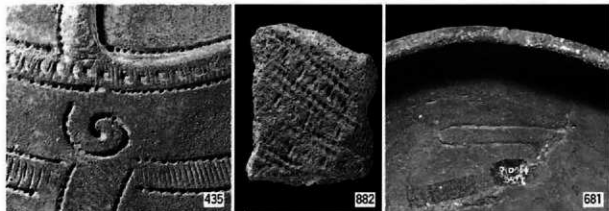
LR+R 付加条



Lr 無節縄文



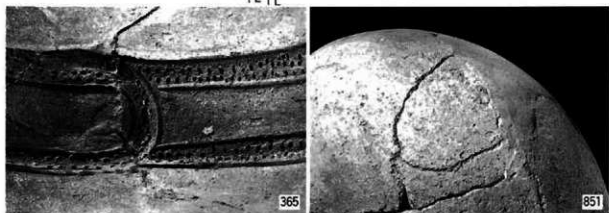
LL 燃り戻し



巻貝刺突十垂直刻

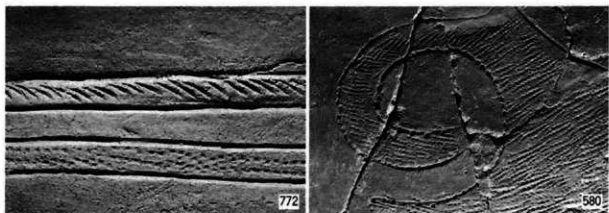
R I E I E

縄圧痕



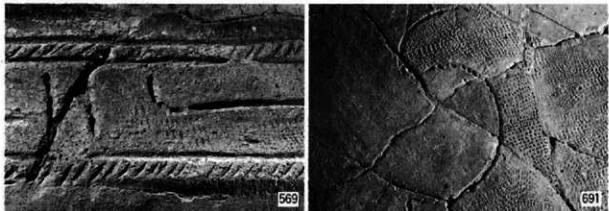
充填刺突

縄圧痕



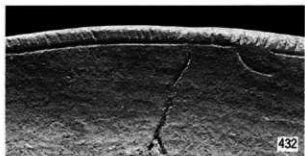
二枚貝押捺縄文

二枚貝押捺縄文

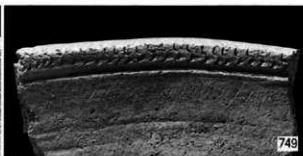


巻貝回転縄文

巻貝回転縄文



垂直刻 (直刻)



二枚貝腹線刻 (二貝刻)



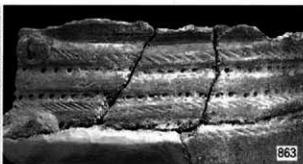
斜刻



斜刻 (L刻)



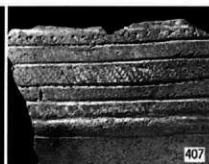
平行刺突沈線間斜刻帯



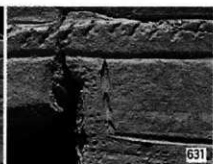
平行刺突凹線間斜刻帯



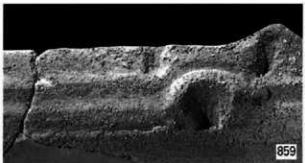
刺突沈線 (疎)



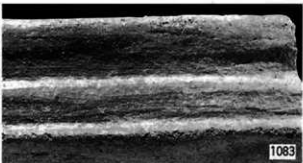
刺突沈線 (密)



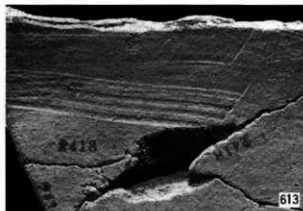
連続押し刺突



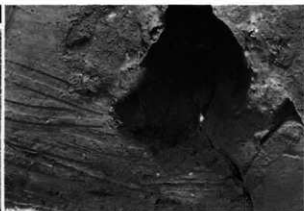
凹線 (断面「3」字状)



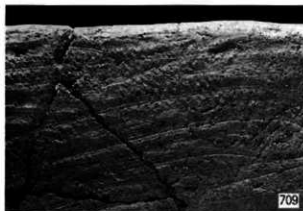
凹線 (断面「レ」字状)



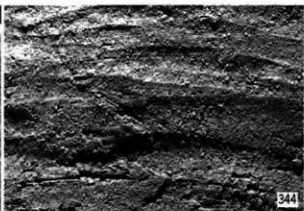
二枚貝条痕



二枚貝条痕



巻貝条痕



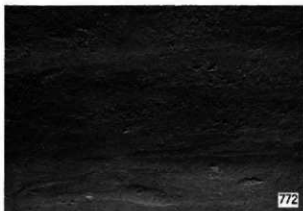
ナデ



巻貝条痕後の軽いナデ



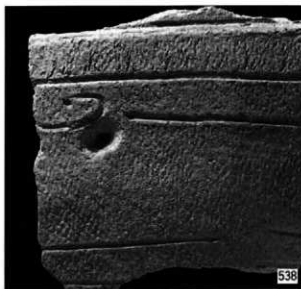
巻貝条痕後のナデ



丁寧なナデ

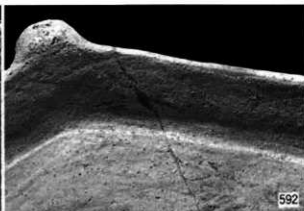


ミガキ



補修孔（焼成後穿孔）

538



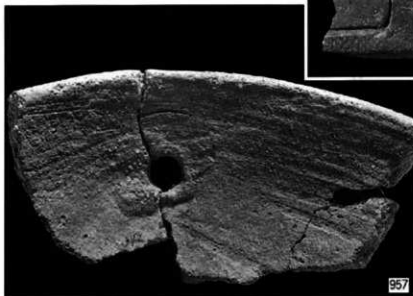
口縁屈曲部内面の強いナデ

592



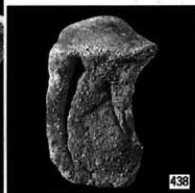
波頂部穿孔

394



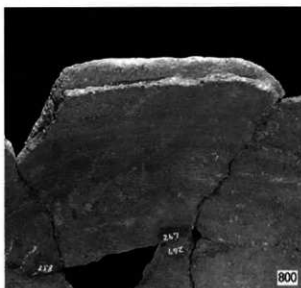
焼成前穿孔

957



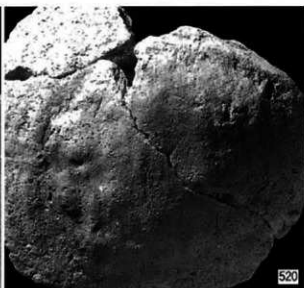
注口突起剥離面

438



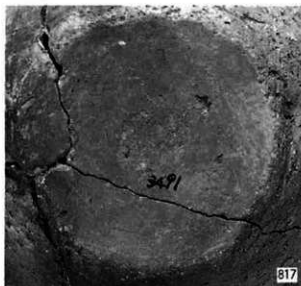
臍口縁（深鉢胴部下半）

800



底部（指おさえ痕）

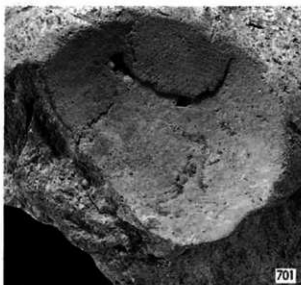
520



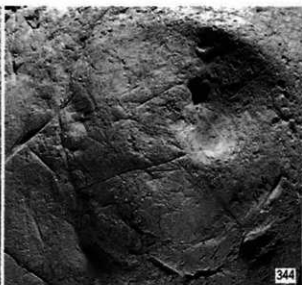
ヘソ状凹底



木葉痕



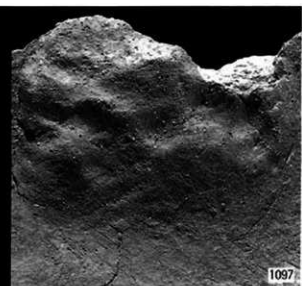
粘土塊付着



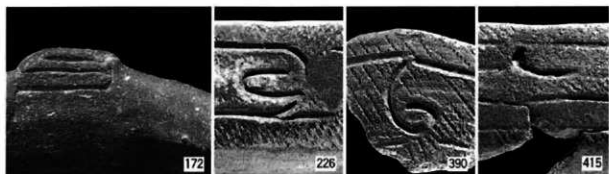
凹底の潰れ、木葉痕



ヘソ状凹底



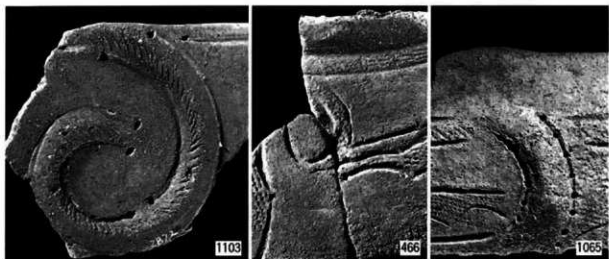
内面指おさえ痕



巖位蛇行文

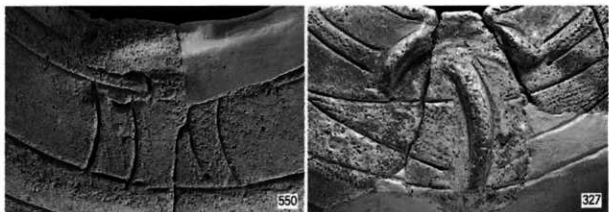
「6」字状文

逆「ノ」字状文



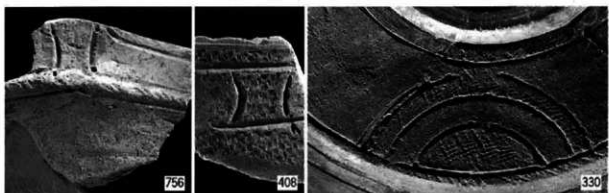
逆「6」字状有刺凸帯

「ノ」字状凸帯



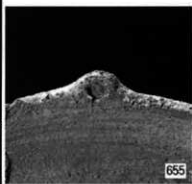
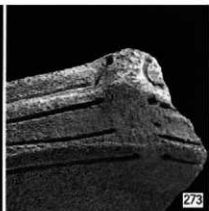
「ハ」字状平行沈線文

馬蹄形凸帯＋「ノ」字状凸帯

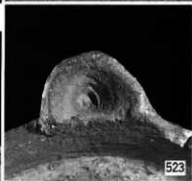
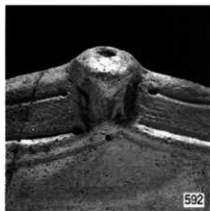


「ハ」字状文

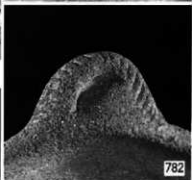
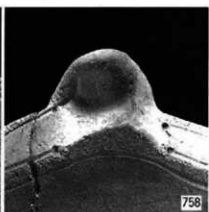
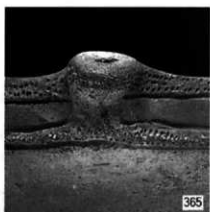
馬蹄形文



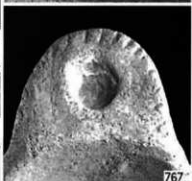
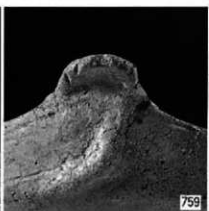
逆「ノ」字状凸帯



逆「ノ」字状突起



「ノ」字状突起



アヒルのくちばし状突起

