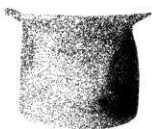




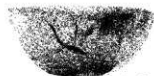
9-12



9-11



10-1



10-2



13-2



13-3



13-4



13-1



15-1



15-2



15-3



15-4



15-5



15-6



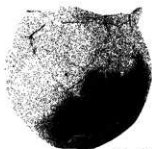
15-7



15-8



15-10



15-15



15-12



15-13



15-11



16-17-1



16-17-2



16-17-3



16-17-4



16-17-5



16-17-6



16-17-7



16-17-8



16-17-9



16-17-10



16-17-11



16-17-12



16·17-24



16·17-23



16·17-15



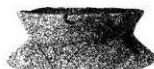
16·17-19



16·17-20



16·17-18



16·17-16



16·17-14



16·17-17



16·17-13



16·17-26



16·17-25



21-1



21-2



21-3



21-4



21-5



21-9



21-7



21-6



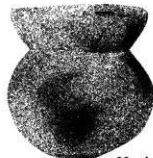
22-2



22-1



22-3



22-4



22-5



22-6



22-7



22-8



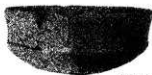
22-9



22-10



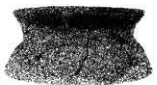
23-2



23-3



23-4



23-5



23-12



23-10



23-7



23-8



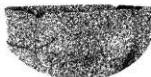
23-11



24-1



25-95-1



25-95-2



25-95-3



25-95-4



25-95-5



25-95-8



25-95-9



25-95-10



25-95-18



25-95-17



25-95-19



25-95-20



25-95-11



25-95-12



25-95-14



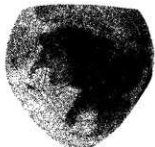
25-95-24



25-95-25



25-95-22



25-95-23



96-1



28-1



28-2



28-3



29-2



29-1



29-3



30-2



30-3



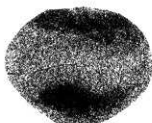
30-5



30-6



30-7



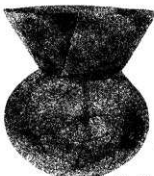
30-9



30-8



30-11



30-10





30-14



30-13



30-12



32-1



32-2



32-6



32-8



32-9



32-7



33-1



33-2



33-3



34-1



34-2



34-3



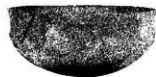
34-4



34-5



34-7



37-1



37-2



37-3



37-7



37-4



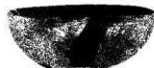
38-1



39-1



40-4



41-6



41-14



41-11



41-12



41-8



41-7



41-9



41-10



46-1



46-2



47-4



47-1



47-2



47-3



48-1



48-2



48-3



48-4



48-5



48-6



49-1



49-3



50-1



50-2



50-3



50-4



50-5



50-6



50-7

图版52



50-8



50-9



50-10



50-11



50-12



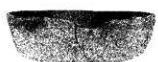
50-13



50-14



50-15



50-16



50-20



50-19



51-1



51-2



51-3



51-4



51-5



51-6

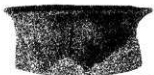


51-7

第50・51号住居跡出土遺物



51-9



51-8



52-1



54-1



54-2



54-3



54-4



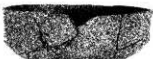
55-1



58-1



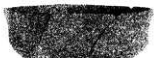
58-2



58-3



58-4



58-5



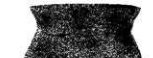
58-6



58-7



58-8



58-15



58-12



58-19



58-18



58-13



58-14



58-20



58-11



58-9



58-10



61-1



61-2



61-4



61-5



62-1



62-2



63-1



64-1



64-2



64-3



64-4



64-5



64-6



64-7



64-8



64-9



64-10



64-11



64-12



64-13

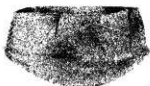


64-14





64-16



64-15



64-17



65-1



65-2



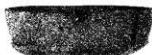
65-3



65-4



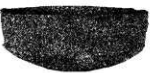
66-1



66-2



66-3



66-4



66-6



67-1



67-2



67-3



68-1



69-1



69-2



69-3



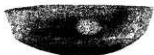
69-4



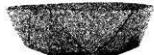
69-5



69-6



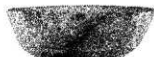
69-7



69-8



69-9



69-10



69-11



69-12



69-13



69-14



69-15



69-16



69-17



69-18



69-19



69-20



69-21



70-1



70-2



73-1



73-2



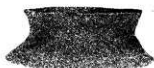
73-3



73-4



73-7



73-5



73-6



75-1



75-2



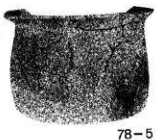
75-3



76-1



76-2



第76·77·78号住居跡出土遺物

图版60



79-1



79-2



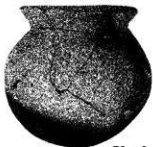
79-3



79-4



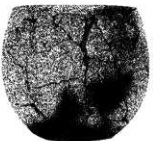
79-5



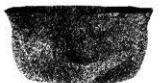
79-6



79-9



79-7



79-8



79-10



80-1



80-2



80-3



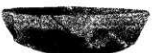
80-4



80-5



80-6



80-7

第79·80号住居跡出土遺物



80-8



80-9



80-10



80-11



80-12



80-13



80-14



80-15



80-16



80-17



80-18



80-19



80-20



80-22



80-21



81-1



81-2



82-1



82-2



82-3



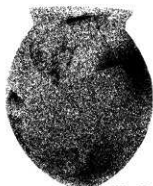
82-4



82-5



82-8



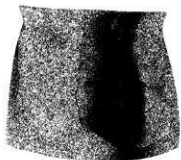
82-6



82-12



82-9



82-10



82-11



82-13



83-1



83-2



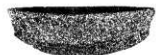
83-3



83-4



83-5



83-6



83-7



83-8



83-9



83-10



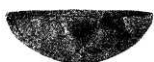
83-11



83-12



83-13



83-14



83-15



83-16



83-17



83-18



83-19



83-20



83-21



83-22



83-23





83-24



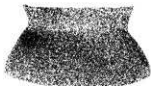
83-25



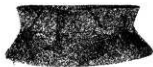
83-26



83-27



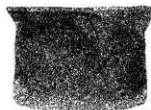
83-28



83-29



83-31



83-32



83-33



83-35



83-34



83-36



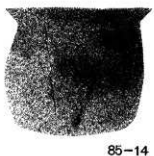
83-37



83-38



85-1





86-1



91-1



91-2



87-1



87-2



87-3



87-7



87-6



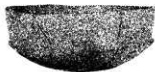
87-4



87-5



88-1



92-1



92-2





93-12



93-14



93-15



93-17



93-18



93-19



SK48-1



SK48-2



Grid-1



Grid-3



Grid-4



Grid-5



Grid-6



Grid-7



Grid-8

第93号住居跡出土遺物

第48号土坑出土遺物

グリッド出土遺物



4-11



3-15



46-3

耳環



1-39



1-86



9-24



12-3



15-21



4-10



16-17-45

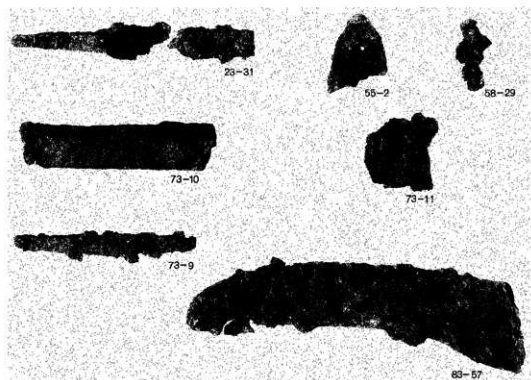


28-14



23-32

鉄製品(1)



23-31

55-2

58-29

73-10

73-11

73-9

83-57

鉄製品(2)



83-52

83-55

83-53

83-56

85-25

85-23

85-21

83-54

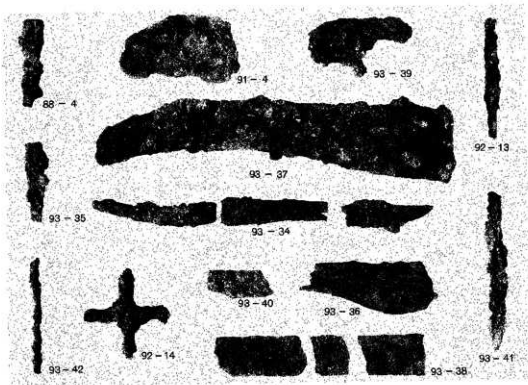
85-22

85-24

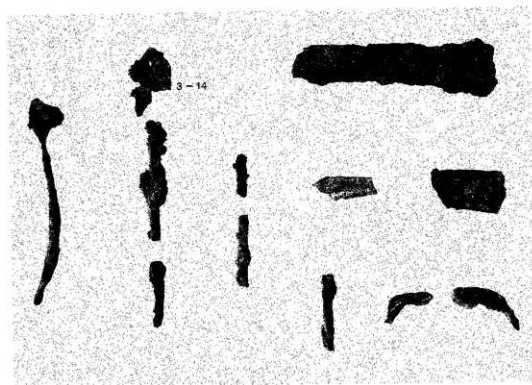
Grid

85-22

鉄製品(3)



鉄製品(4)



鉄製品(5)





83-54



9-24



12-3



83-55



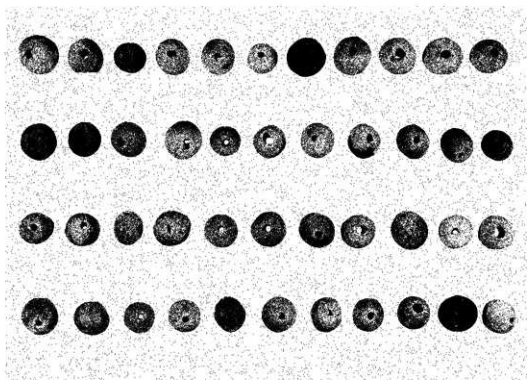
93-34



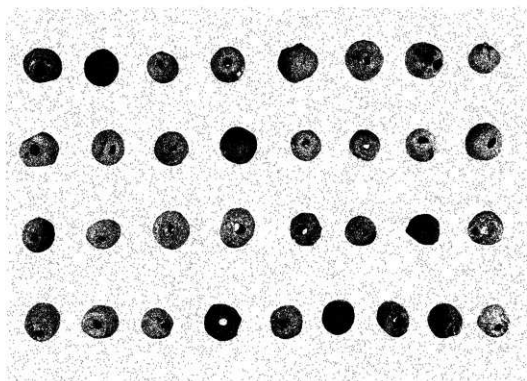
93-39



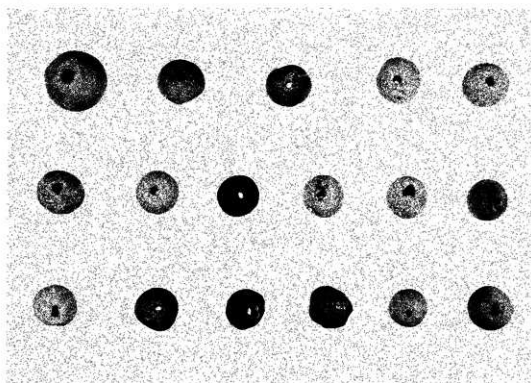
1-36



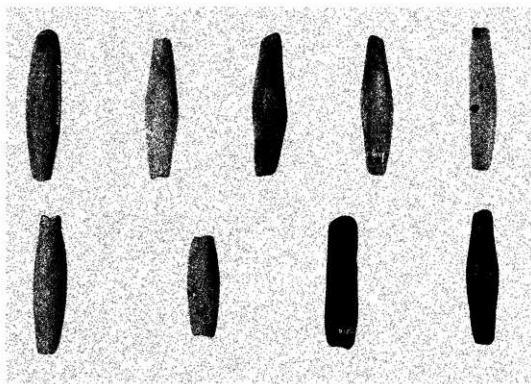
土瓦(1)



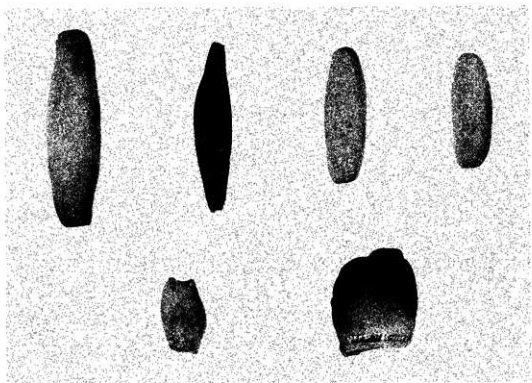
土瓦(2)



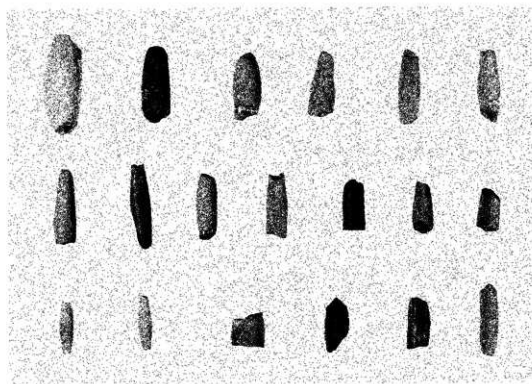
土瓦(3)



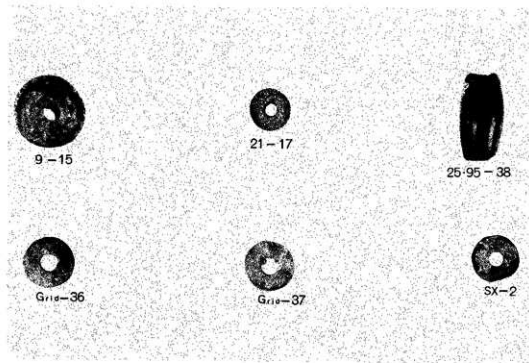
土錘(1)



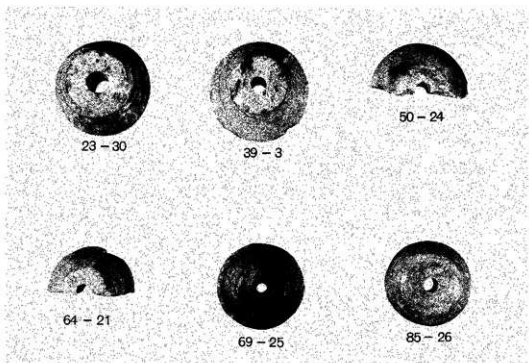
土鐘(2)



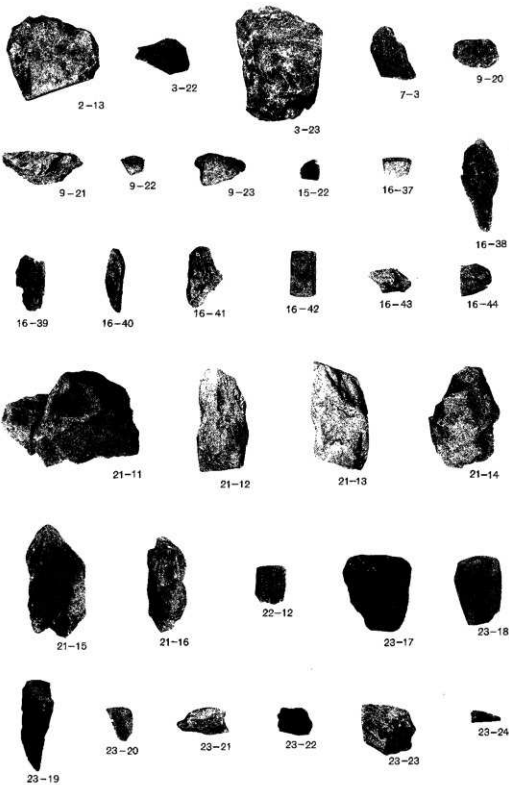
土鐘(3)



玉類



紡錘車



石製模造品(1)



23-25



23-26



23-27



23-28



23-29



29-11



32-11



32-12



32-13



32-14



32-15



32-16



32-17



32-18



32-19



32-20



32-21



32-22



32-23



32-24



32-25



32-26



32-27



32-28



32-29



32-30



32-31



32-32



32-33



34-9



34-10



47-10



47-11



47-12



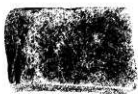
47-13







4-6



4-7



G-18



G-17



G-16



G-19



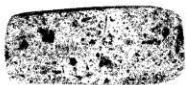
54-8



61-6



64-19



67-4



69-24



83-42



92-12



93-32

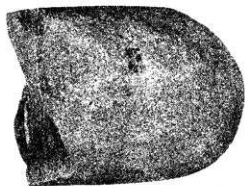
砥石(1)



22—1



24—2



32—10



71—2



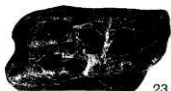
81—3



93—31



1-31



23-13



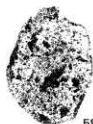
28-4



34-8



52-3



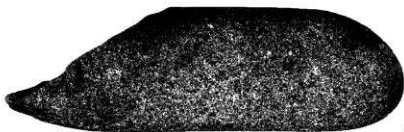
58-23



71-1



87-8

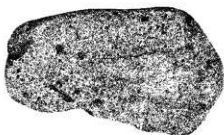


4-8

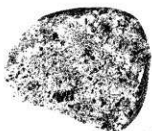
砾石(3)



1-30



49-4



58-22



58-21



93-31

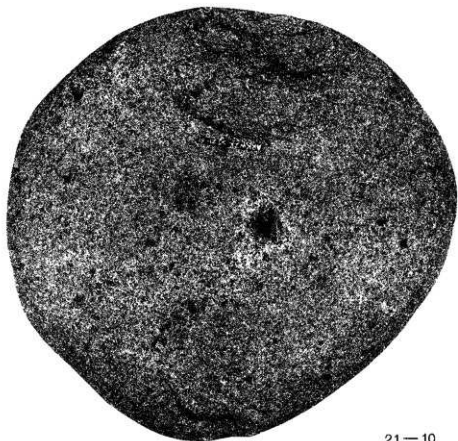
砾石(4)



54—7

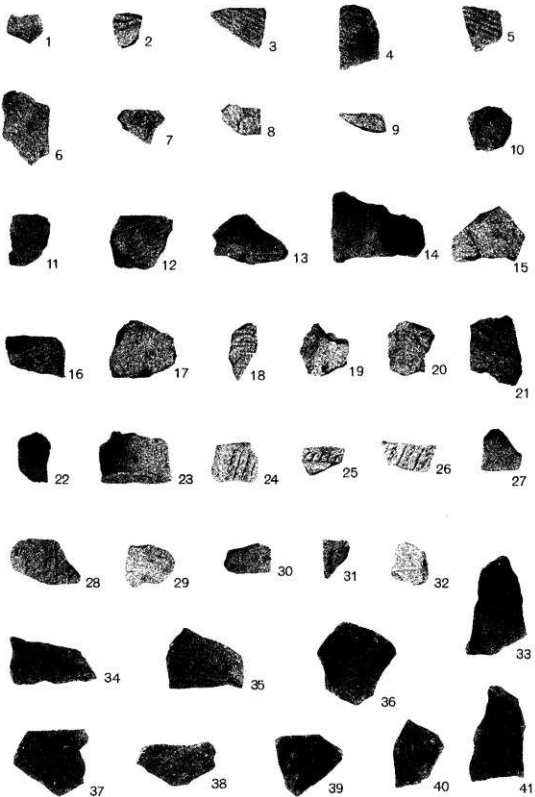


83—41



21—10

凹石



縄文土器(1)

图版86



42



43



44



45



46



47



48



49



50



51



52



53



54



55



56



57



58



59



60



61



62



63



64



65



66



67



68



69



70



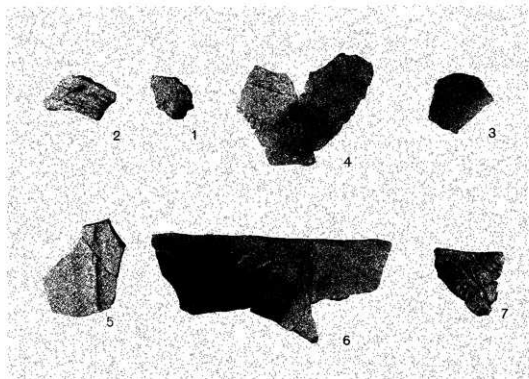
72



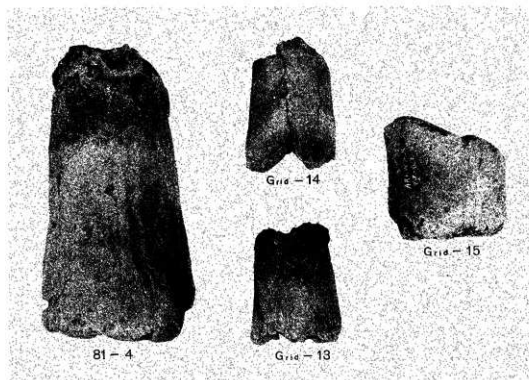
73



71

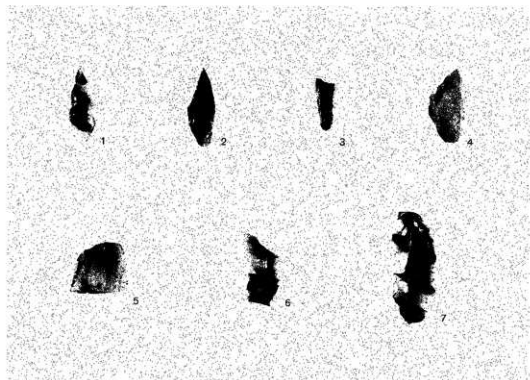


第19号住居跡出土遺物

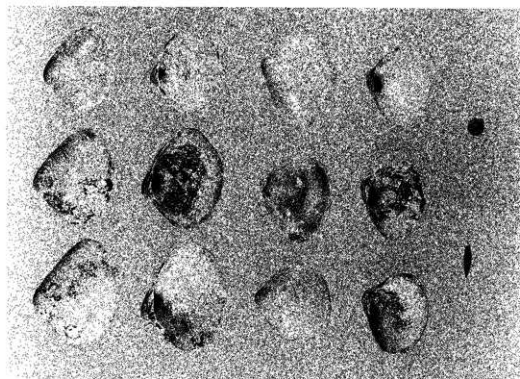


羽口





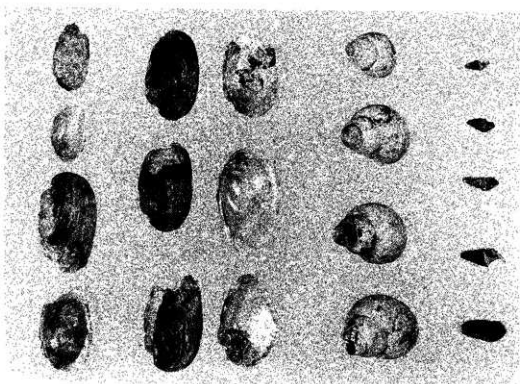
石器



ハマグリ

ニッポンマイマイ(右上)

ヒカリギセル(右下)



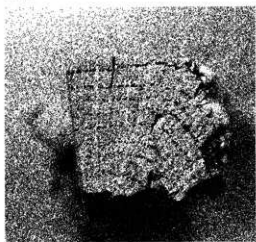
イシガイ

マツカサガイ

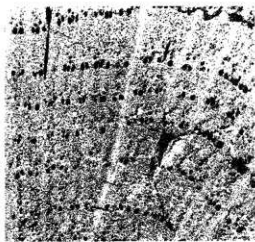
貝

オオタニシ

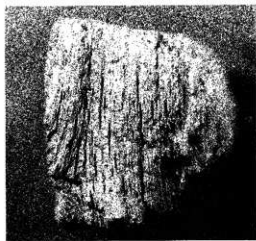
チリメンカワニナ



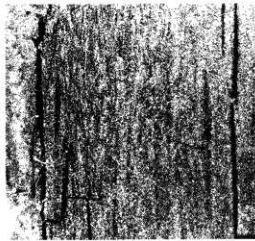
木口



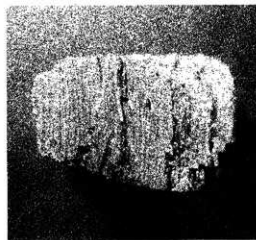
×約2倍



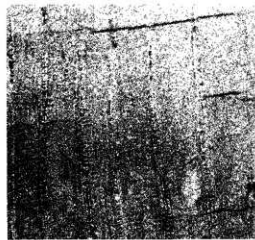
板目



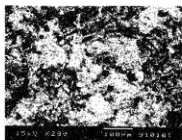
×約2倍



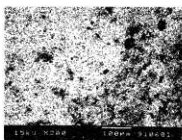
柾目



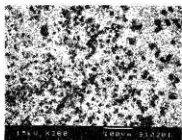
×約2倍



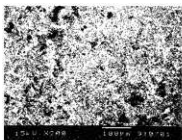
资料1



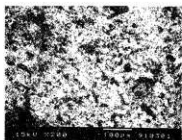
资料6



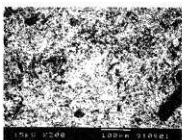
资料2



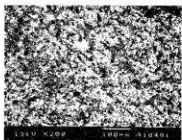
资料7



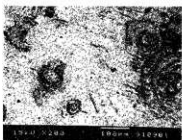
资料3



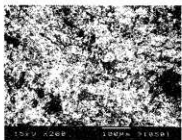
资料8



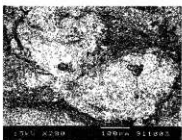
资料4



资料9



资料5



资料10

鉄滓顕微鏡写真

埼玉県埋蔵文化財調査事業団報告書 第112集

荒川附遺跡

国道122号線バイパス関係埋蔵文化財発掘調査報告

- V -

平成4年3月15日 印刷

平成4年3月31日 発行

発行 財団法人 埼玉県埋蔵文化財調査事業団

〒369-01 大里郡大里村大字箕輪字船木884

電話 (0493) 39-3955

印刷

アサヒ印刷(株)