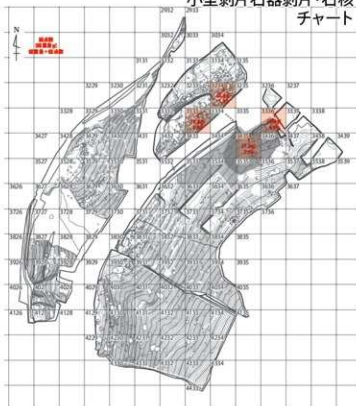
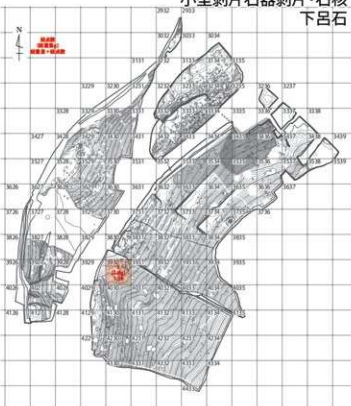


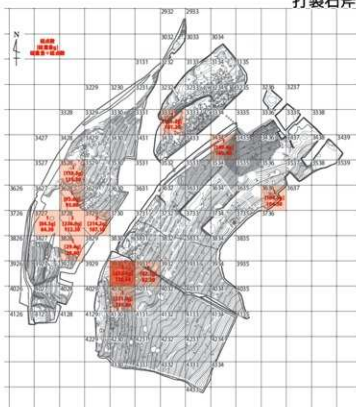
小型剥片石器剥片・石核  
チャート



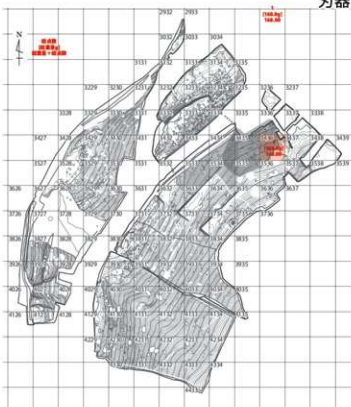
小型剥片石器剥片・石核  
下呂石



打製石斧



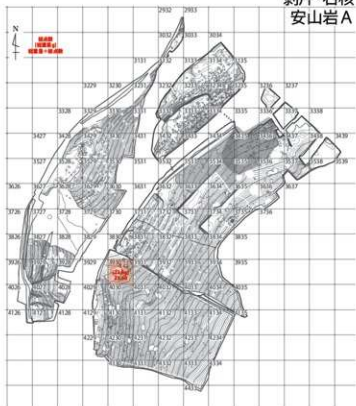
刃器



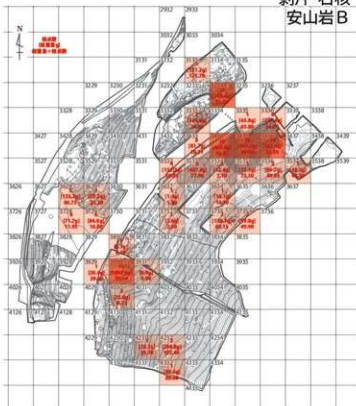
0 S=1:500 30m

図 125-3 万瀬遺跡 縄文時代遺物分布図 石器 (3) (S=1/500)

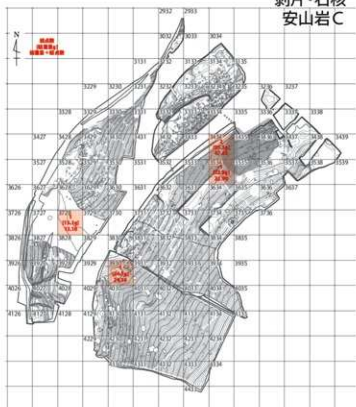
剝片·石核  
安山岩A



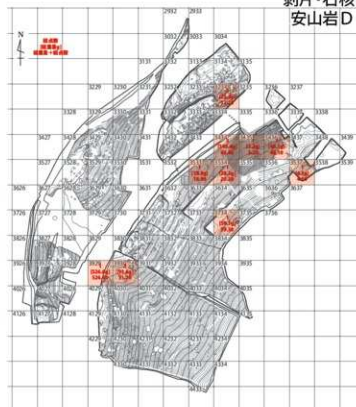
剝片·石核  
安山岩B



剝片·石核  
安山岩C



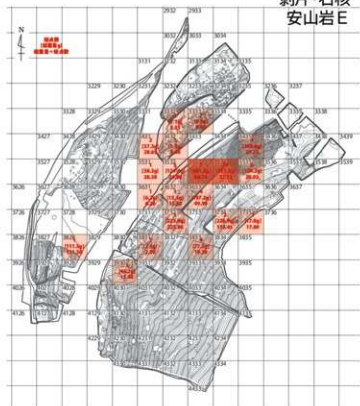
剝片·石核  
安山岩D



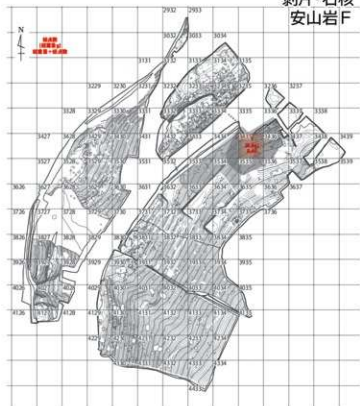
0 S=1:1500 30m

图 125-4 万濂遗址 縄文時代遺物分布图 石器(4) (S=1/1500)

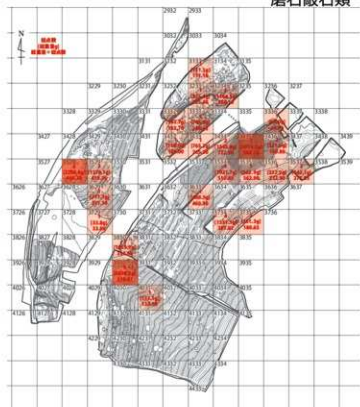
剝片·石核  
安山岩E



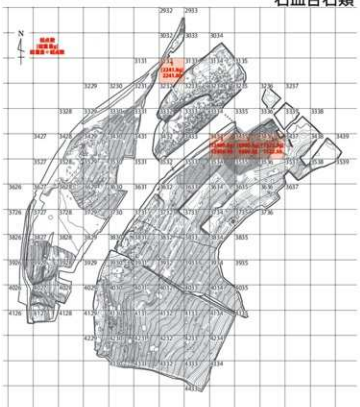
剝片·石核  
安山岩F



磨石敲石類



石皿台石類



0 S=1:1500 30m

图 125-5 万潮遺跡 縄文時代遺物分布圖 石器 (S=1/1500)