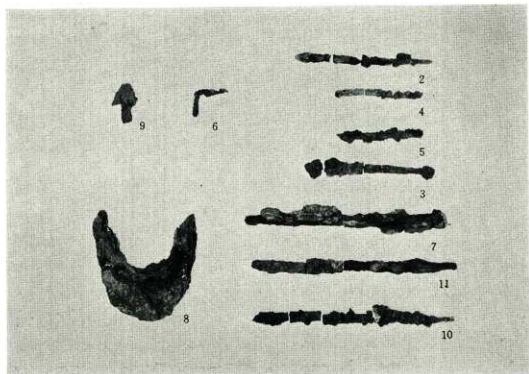
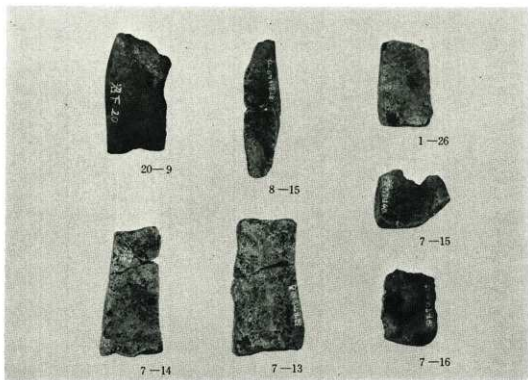


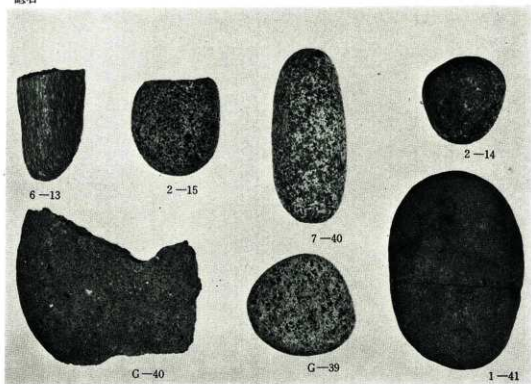
灰釉陶器



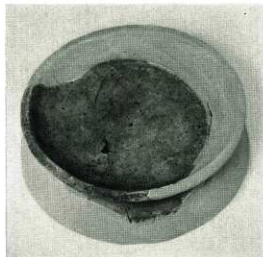
鉄製品



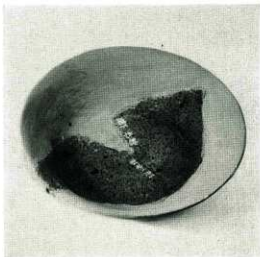
砥石



磨石・石皿等



4号住居跡出土円面碗



グリッド出土杯



墨書1

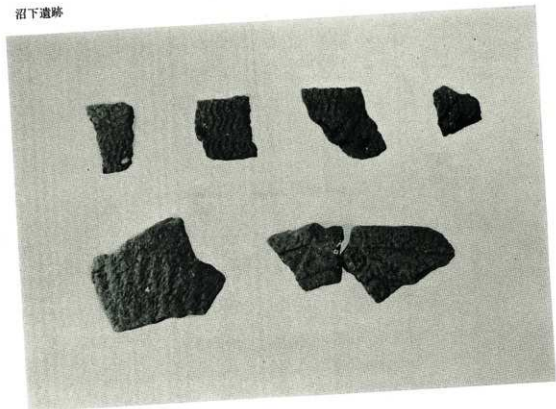


墨書2

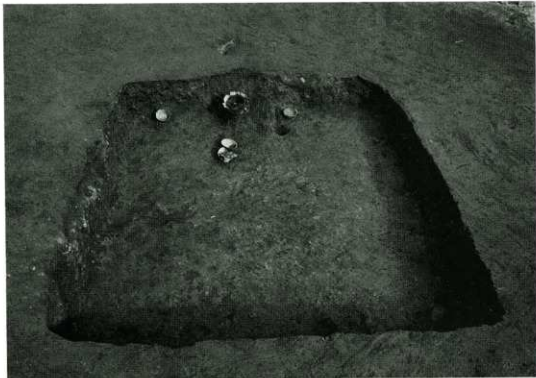


墨書3

沼下遺跡



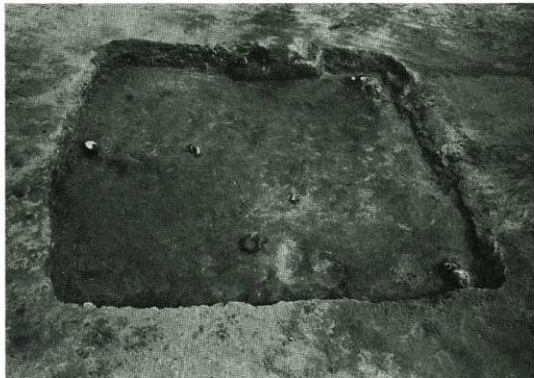
グリッド出土縄文式土器



1号住居跡



1号住居跡電



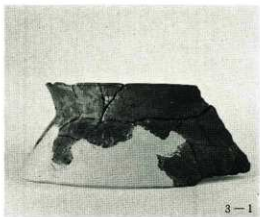
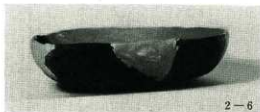
2号住居跡



掘立柱建物跡



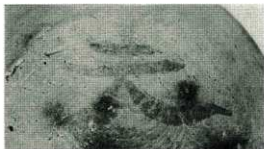
1・2号住居跡出土土器



2・3号住居跡出土土器



3号住居跡出土蓋



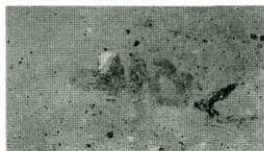
墨書1



墨書2



墨書3



墨書4



1号住居跡



1号住居跡・竈



1号炭焼窯



2号炭焼窯全景



2号炭焼窯



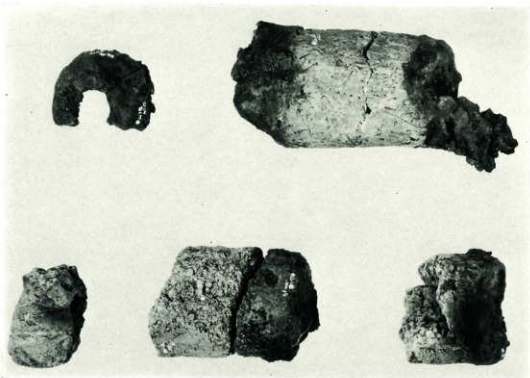
3号炭焼窯全景



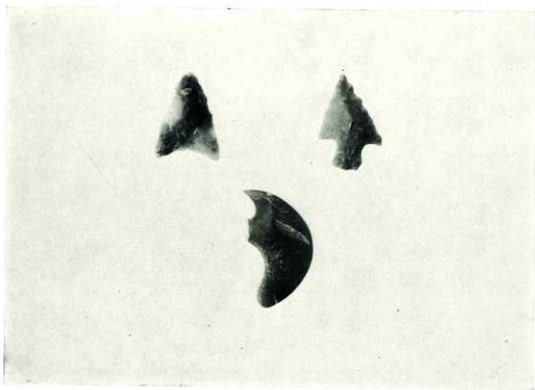
3号炭焼窯



1号住居跡出土土器



1号住居跡出土輪羽口



中山遺跡出土石器



お金塚全景（南より）



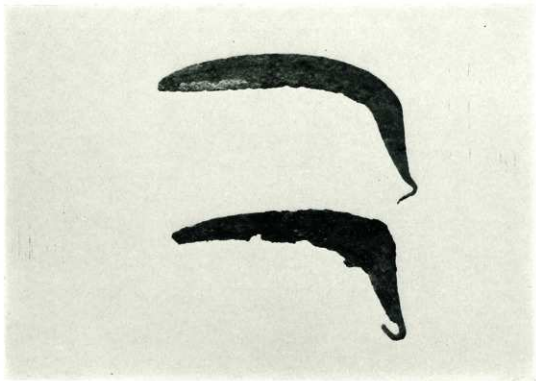
お金塚全景（西より）



お金塚土層



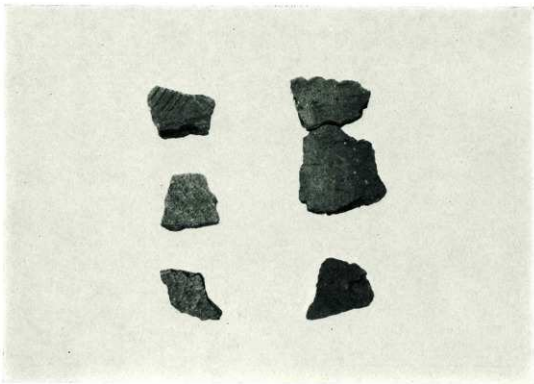
お金塚かわらけ出土状態



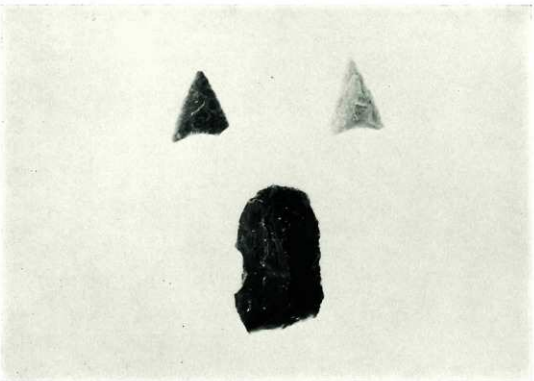
お金塚出土鎌



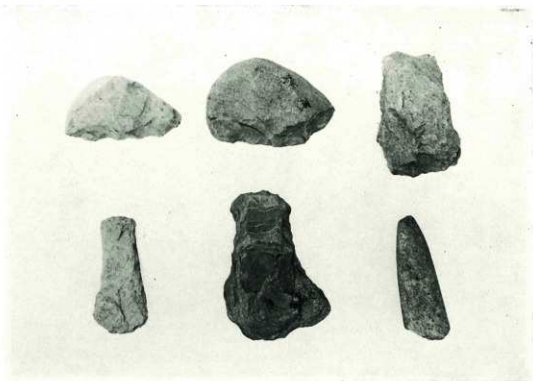
お金塚頂部庚申塔



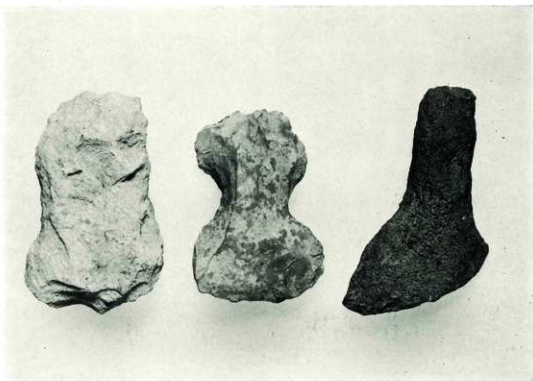
縄文式土器



石器(1)



石器(2)



石器(3)



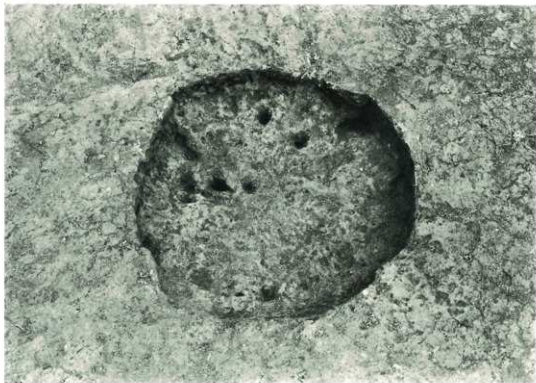
鶴巻遺跡全景



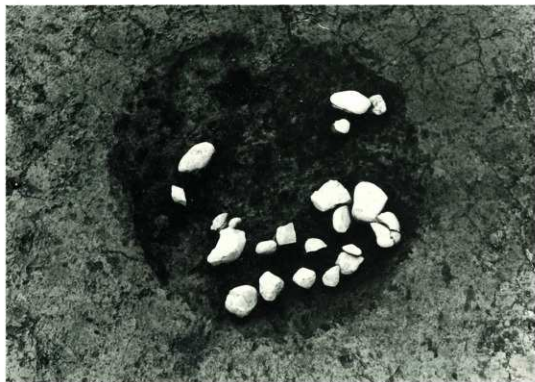
剥片集中区遺物出土状態



土塚 1



土塚 2



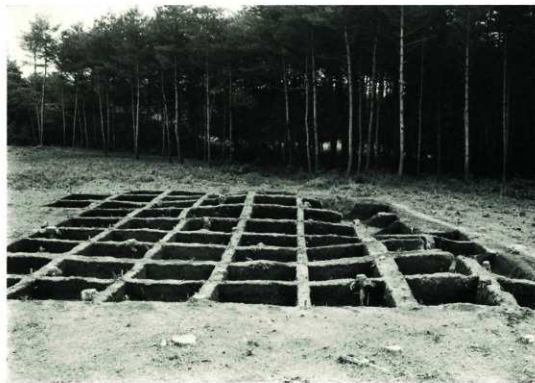
土壇 5



土壇 7



1・2号塚全景



1・2号塚グリッド



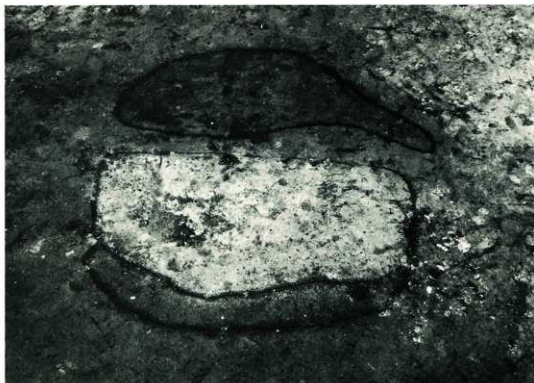
3号塚（南より）



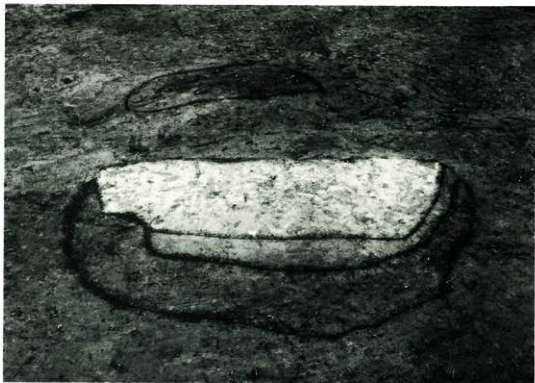
3号塚トレンチ（西より）



倒木痕 5



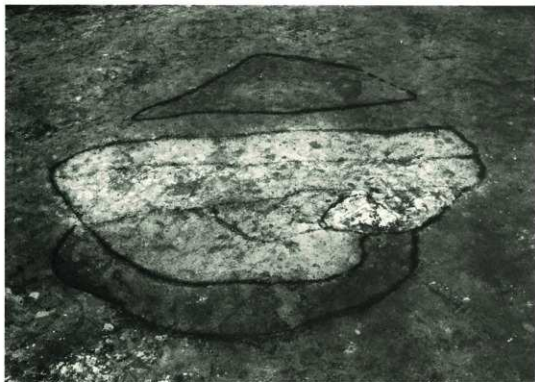
倒木痕 12



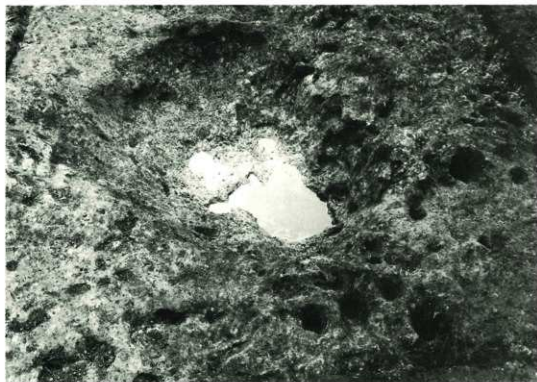
倒木痕 7



倒木痕 7 土層



倒木痕11



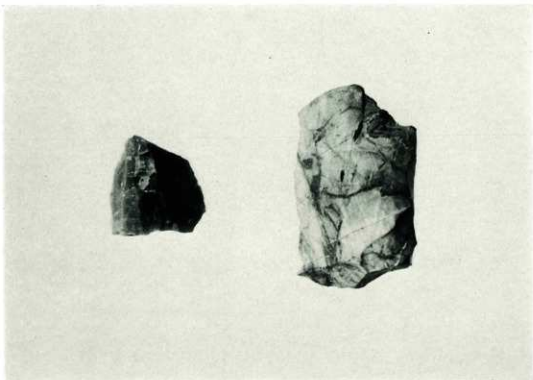
倒木痕11



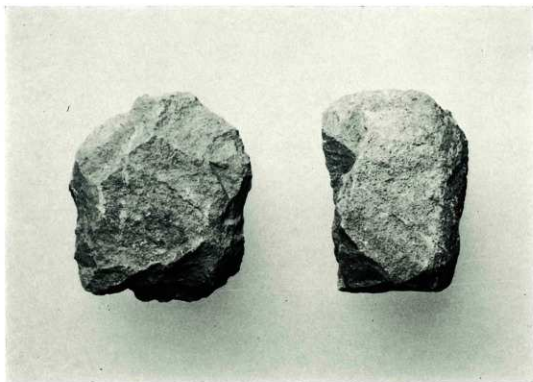
倒木痕17 完掘後全景



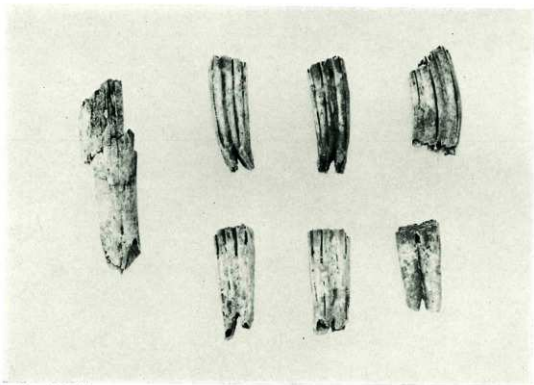
倒木痕調査風景



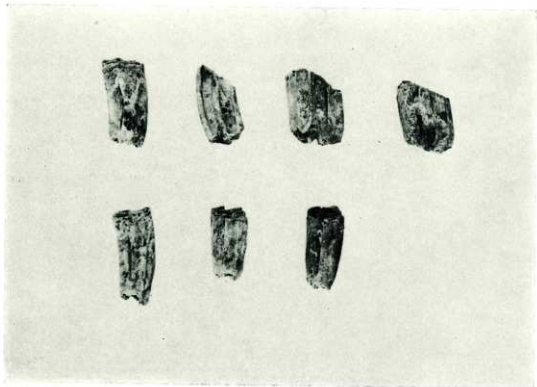
剥片集中区出土石核



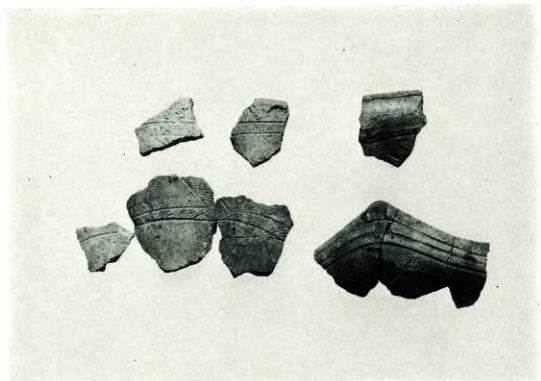
土壌5 出土石器



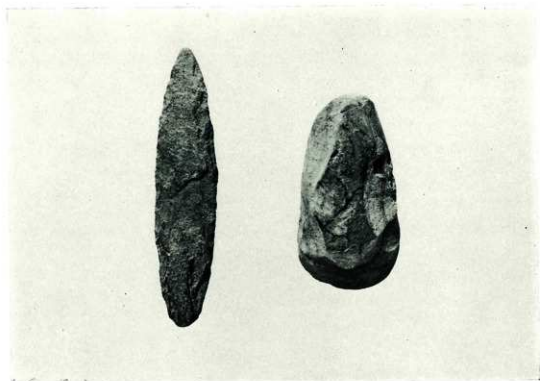
2号塚出土馬歯



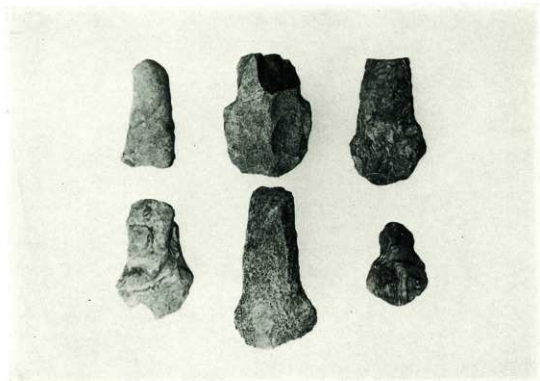
3号塚出土馬歯



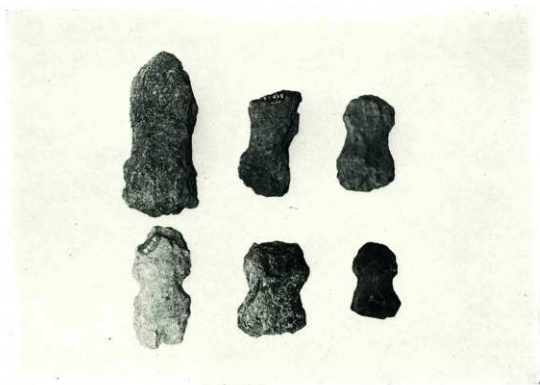
縄文式土器



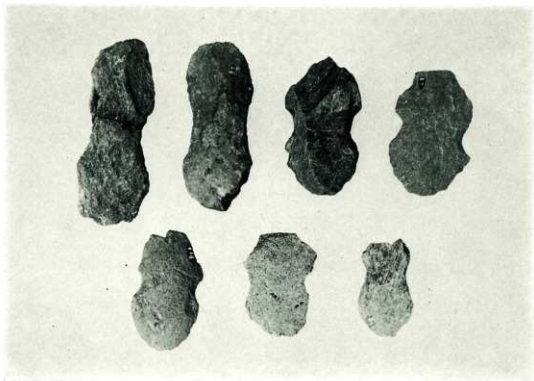
石器(1)



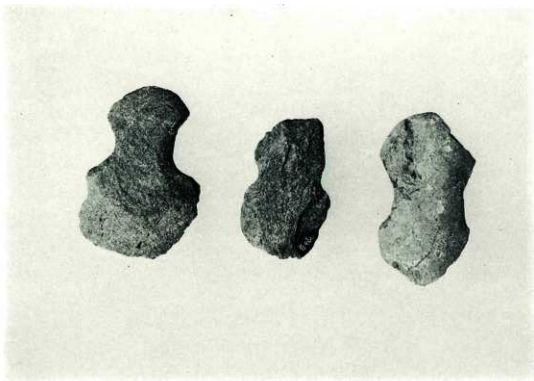
石器(2)



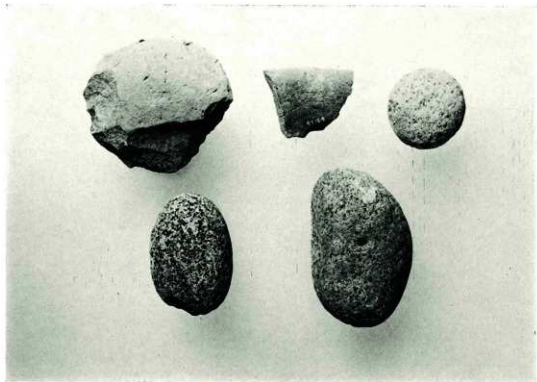
石器(3)



石器(4)



石器(5)



石器(6)

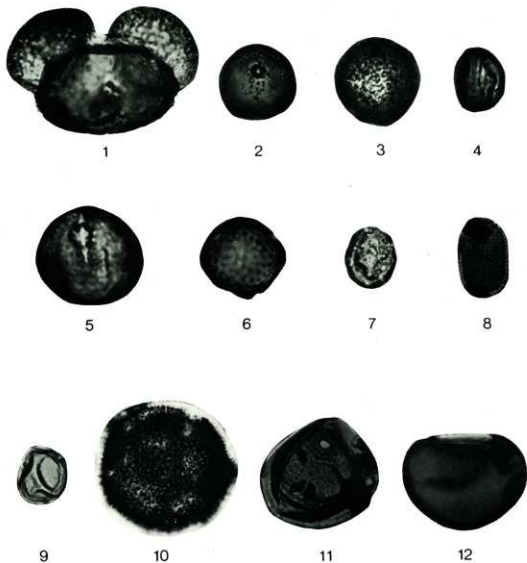
Explanation of Plates

PLATE 64

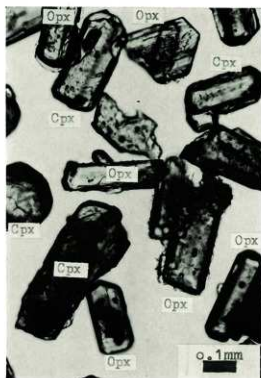
- 1 Pinus
- 2 Cryptomeria
- 3 Sciadopitys
- 4 Lepidobalanus
- 5 Fagus
- 6 Zelkova
- 7 Chenopodiaceae
- 8 Impatiens
- 9 Moraceae
- 10 Portulaca
- 11 Gramineae
- 12 Monolete spore

PLATE 65

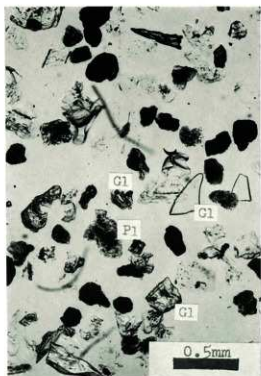
- NO. 1 OPX : 斜方輝石
CPX : 単斜輝石
- NO. 2 PI : 斜長石
GI : 火山ガラス



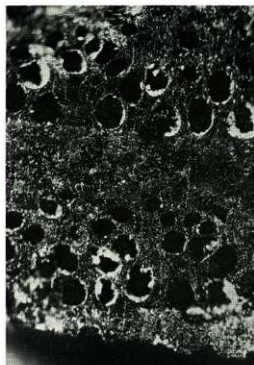
0 50 μ



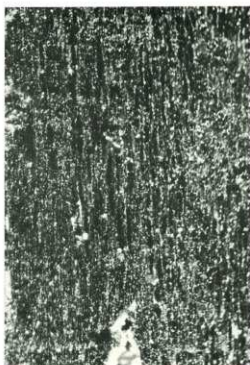
NO. 1 井戸内覆土 (ローム塊)



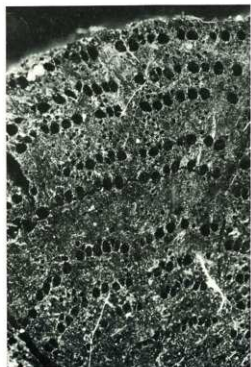
NO. 2 井戸内覆土



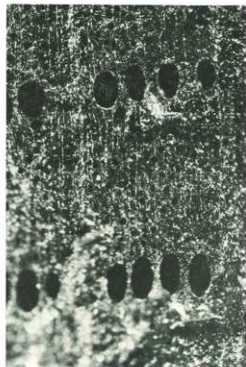
1 *Castanea crenata*
(Cross sect. $\times 35$)



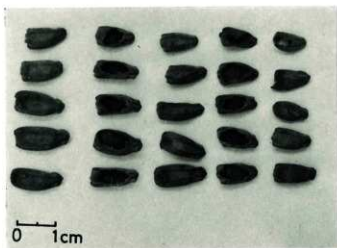
2 *Castanea crenata*
(Jangential Sect. $\times 50$)



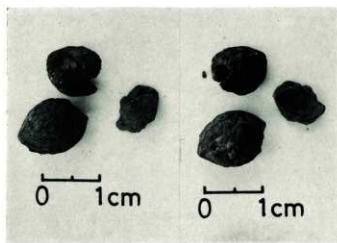
3 *Quercus acutissima*
or *Q. Variabilis* (Cross Sect $\times 30$)



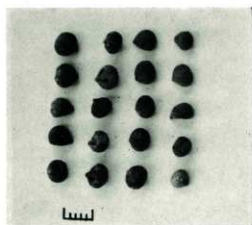
4 *Quercus acutissima*
or *Q. Variabilis* (Cross Sect $\times 35$)



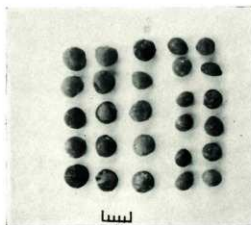
1 *Lagenaria* sp



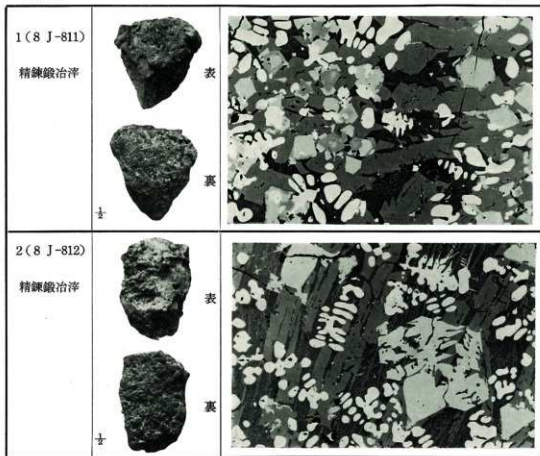
2 *Prunus* of *salicina*



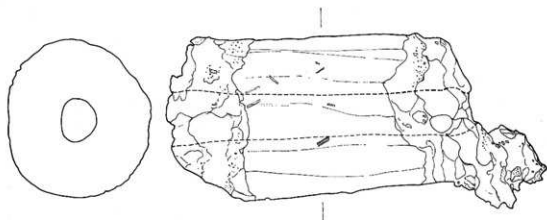
3 *Vitis ficifolia* or *V. flexuosa*



4 *Cannabis sativa*



1号住居跡出土鉄滓頭微鏡組織 (倍率: 100倍)



1号住居跡出土土羽口 No 19 実測図 (±)

埼玉県埋蔵文化財調査事業団報告書第16集

関越自動車道関係

埋蔵文化財発掘調査報告 XIV

沼下・平原・新堀・中山・お金塚

中井丘・鶴巻・水久保・猪久保遺跡

昭和57年3月20日 印刷

昭和57年3月31日 発行

発行 財団法人 埼玉県埋蔵文化財調査事業団

印刷 関東図書株式会社