



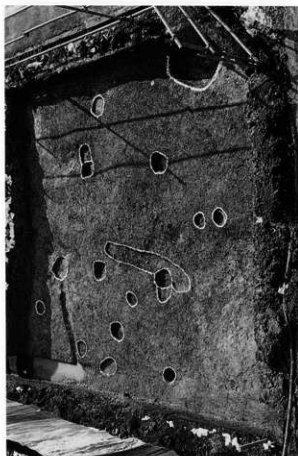
3. 6 Iトレンチ炉壁集積遺構 I-1 (南から)



4. 6 Iトレンチ炉壁集積遺構 I-1 細部 (東から)



1. 4s Iトレンチ全景 (南から)



2. 9 Iトレンチ全景 (北から)



1. 井戸Ⅰ-14 (南西から)



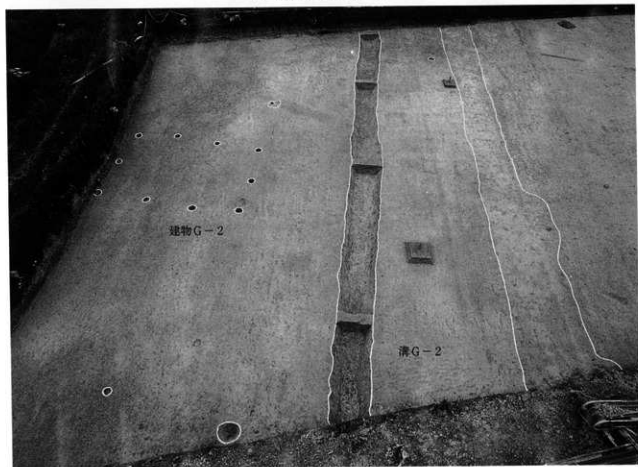
2. 井戸Ⅰ-14 土層断面 (南から)



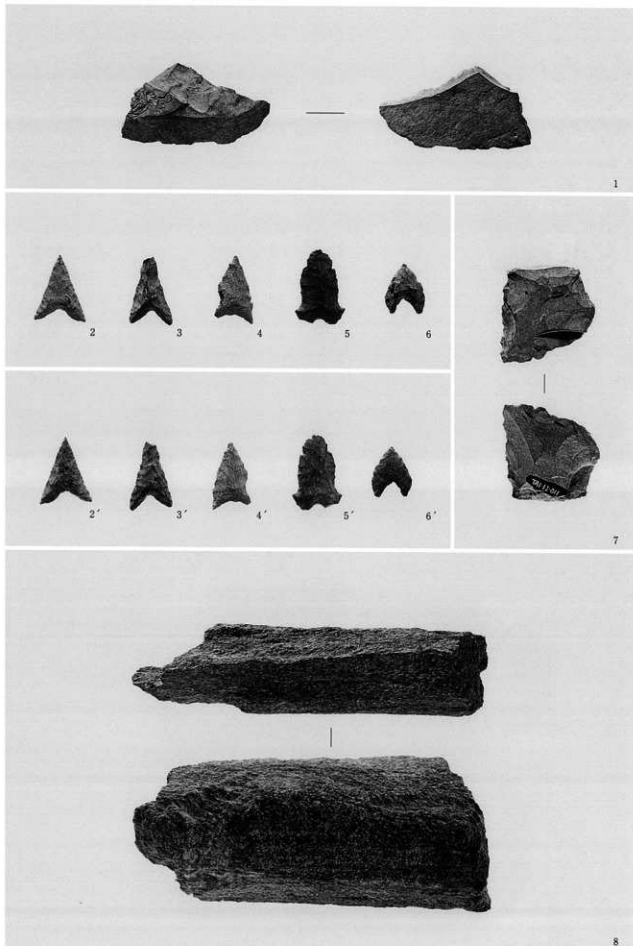
3. 井戸Ⅰ-14 遺物出土状況 (南東から)



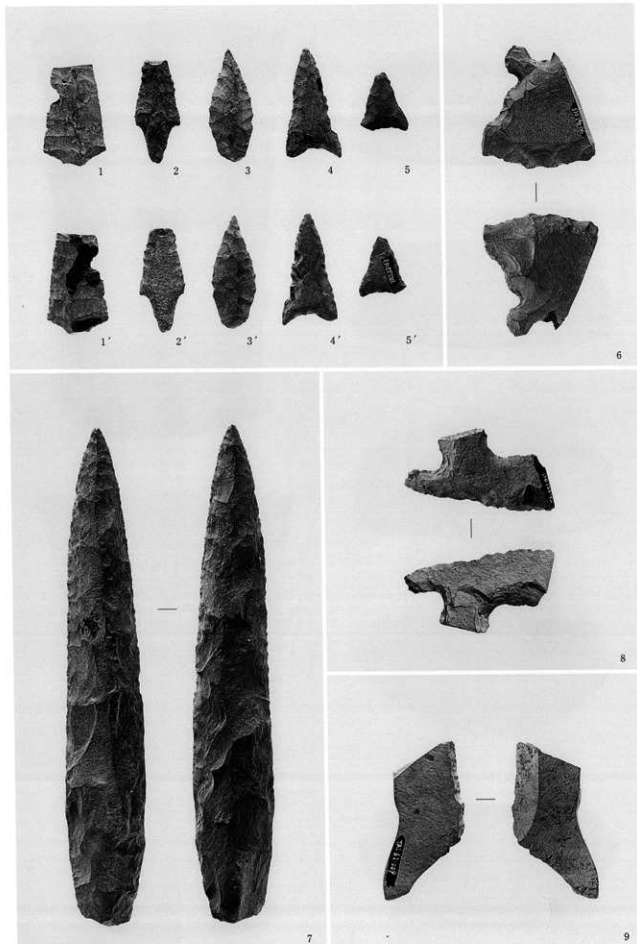
1. 建物G-2 (北から)



2. 建物G-2・溝G-2 (北から)



自然流路F-1 (1, 3)・溝H-53 (2)・鑄造工房H-3 (4)・溝H-63 (5, 6)・1 I トレンチ包含層 (7)・2 I トレンチ包含層 (8)

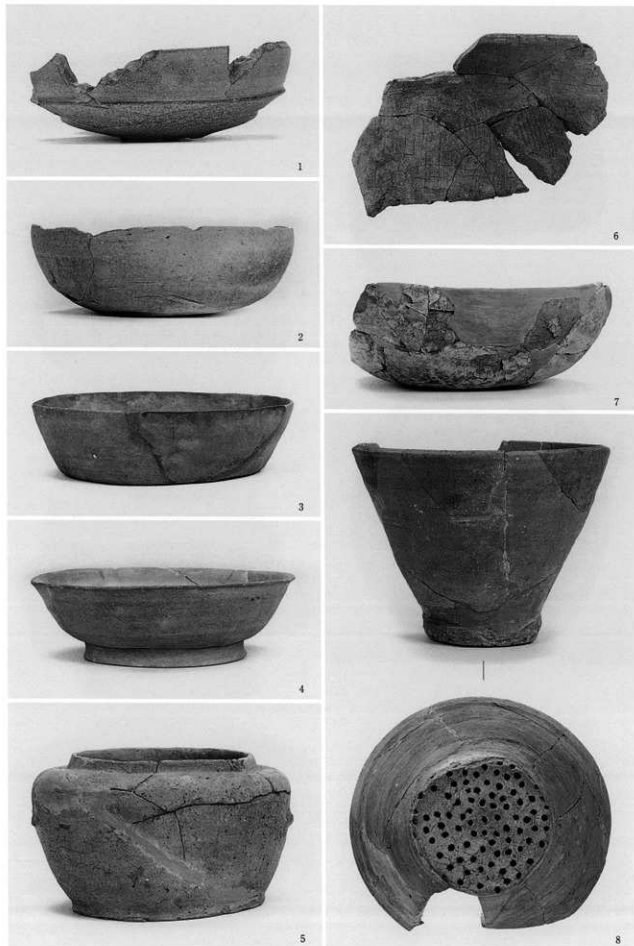


3 H トレンチ包含層 (1, 2)・溝 H-53 (3)・自然流路 F-1 (4)・鑄造工房 H-1 (5)・4 n I トレンチ包含層 (6)・1 I トレンチ包含層 (7)・4 s I トレンチ包含層 (8)・6 I トレンチ包含層 (9)



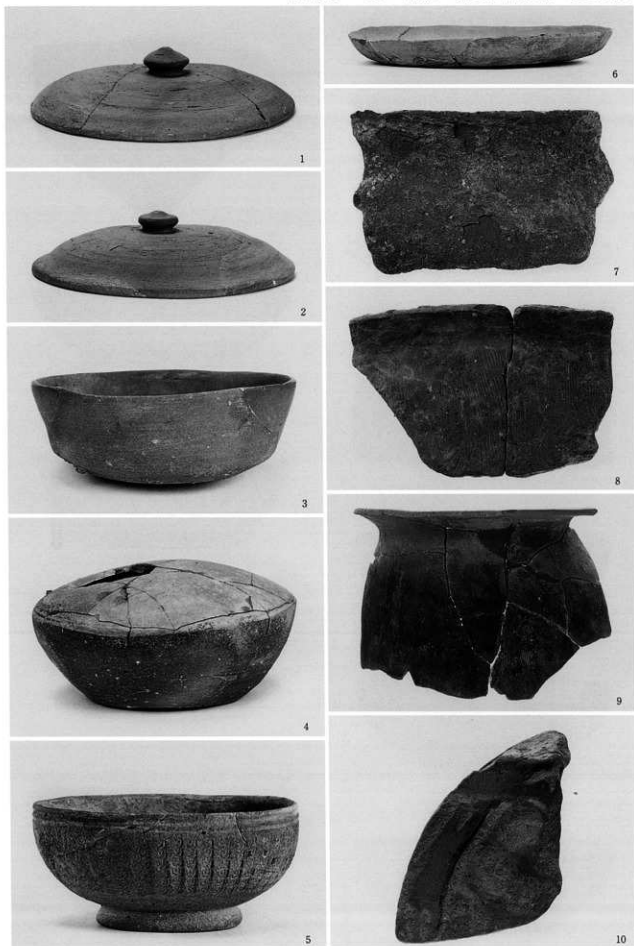
1号墳 (1, 2)・3号墳 (3, 4)・4号墳 (5)・埴輪円筒棺H-1 (6, 7)





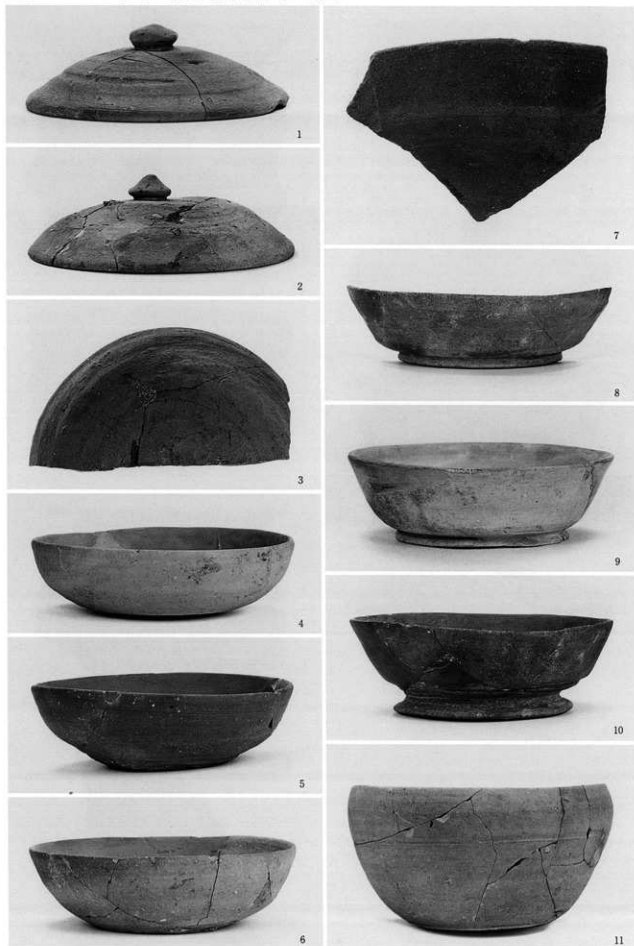
溝G-47 (1)・溝G-51 (2)・井戸G-12 (4, 5)・土坑G-41 (3)・溝H-8 (6, 7, 8)

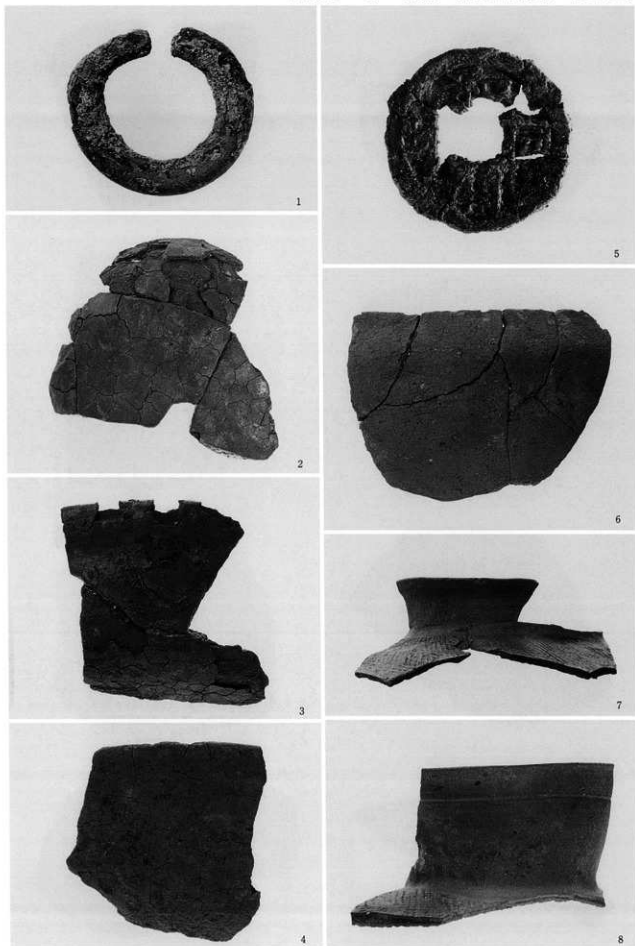




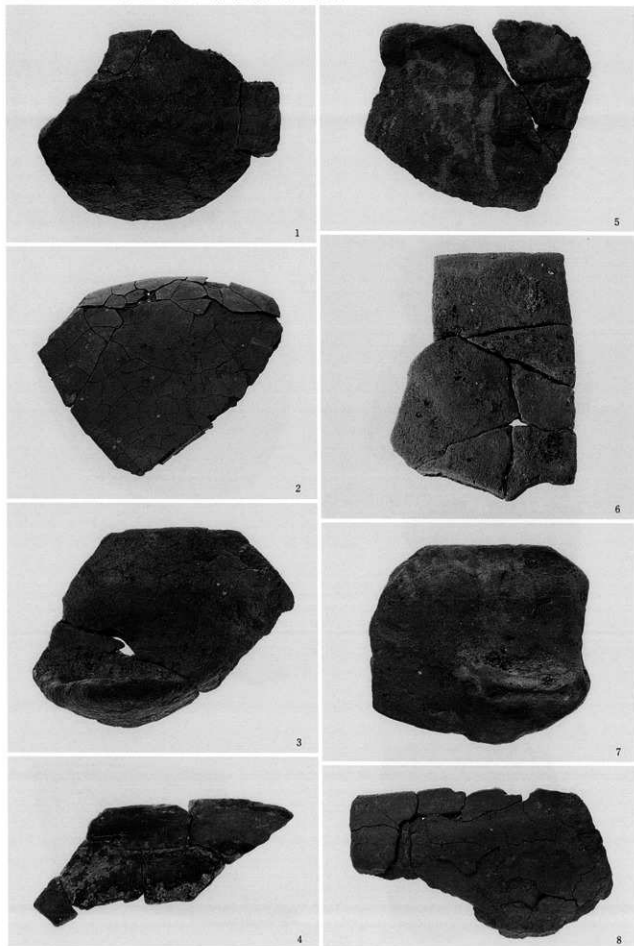
溝H-53 (1, 2, 5, 10)・溝H-58 (3, 4, 6, 8, 9)・溝H-60 (7)

图版 II - 46 飛鳥~奈良時代遺物 (H地区)

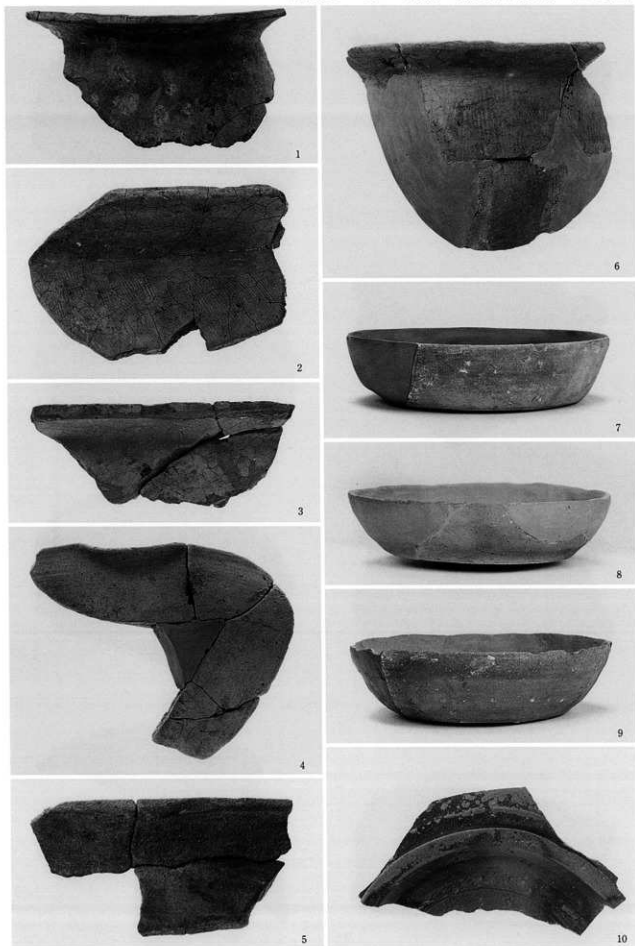




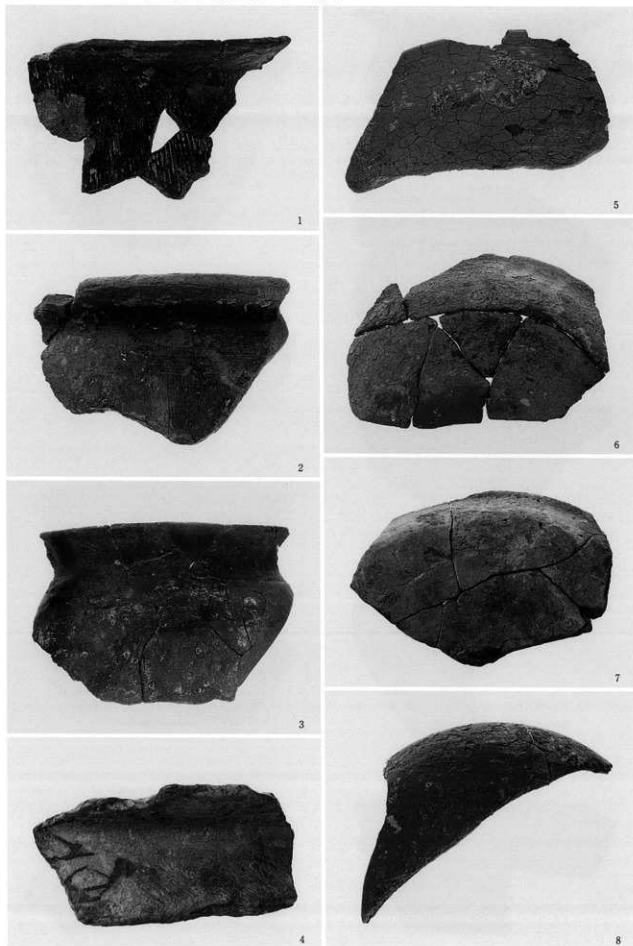
溝H-63 (1~4, 6~8)・鑄造工房H-1 (5)

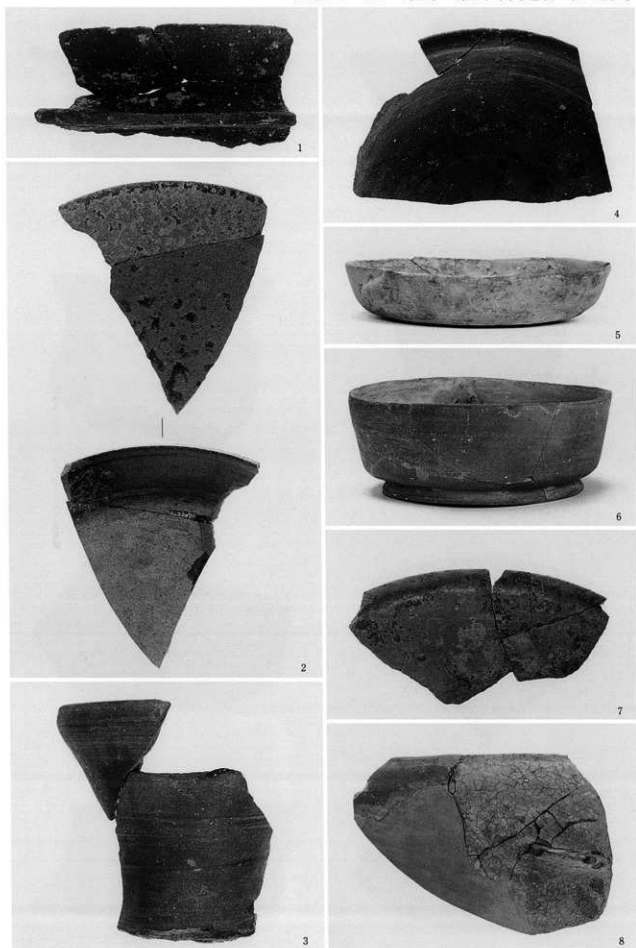


溝H-63 (1~4, 6~8)・土坑H-56 (5)

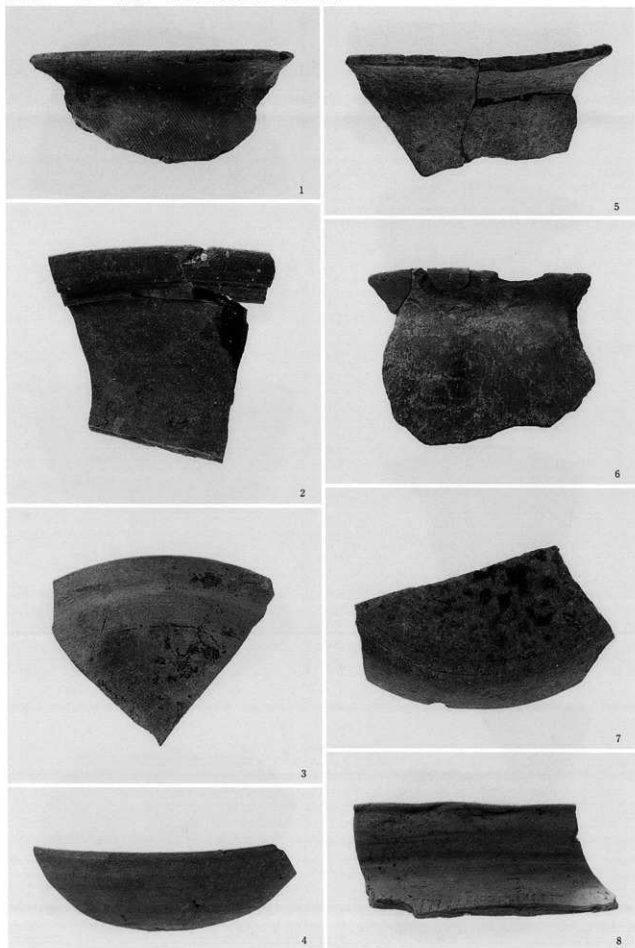


溝H-63 (1, 2, 3)・溝H-64 (4, 5)・溝H-78 (7~10)・鍛造工房H-3 (6)



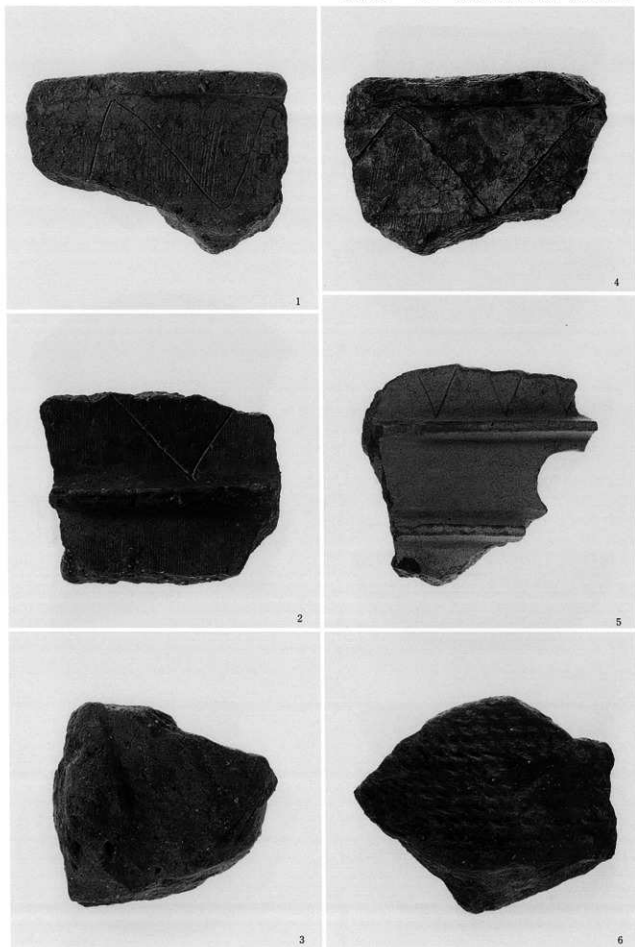


溝H-69 (7)・溝H-74 (1~6)・鑄造工房H-3 (8)

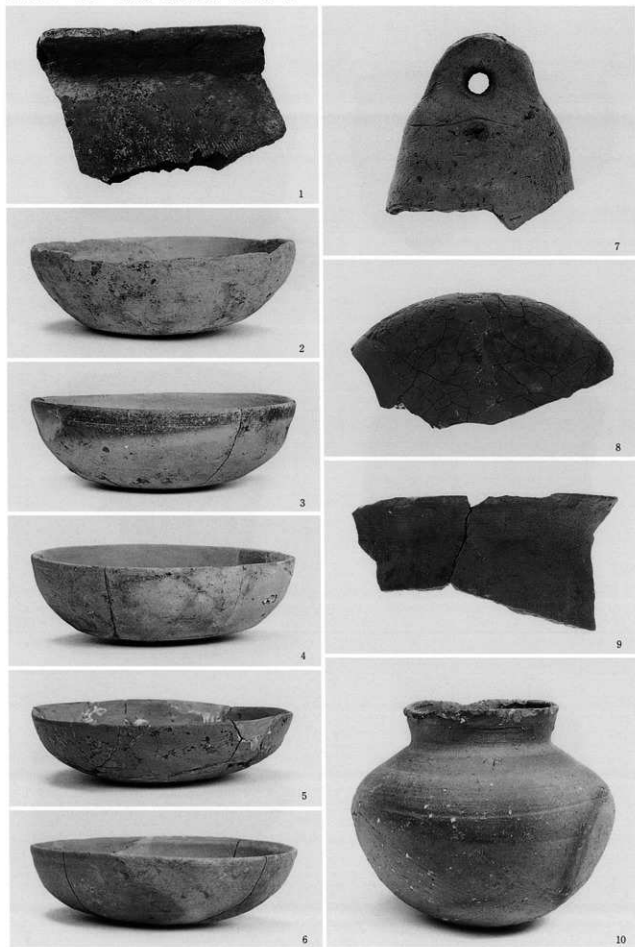


溝H-66 (7, 8)・溝H-70 (1)・溝H-77 (2~6)



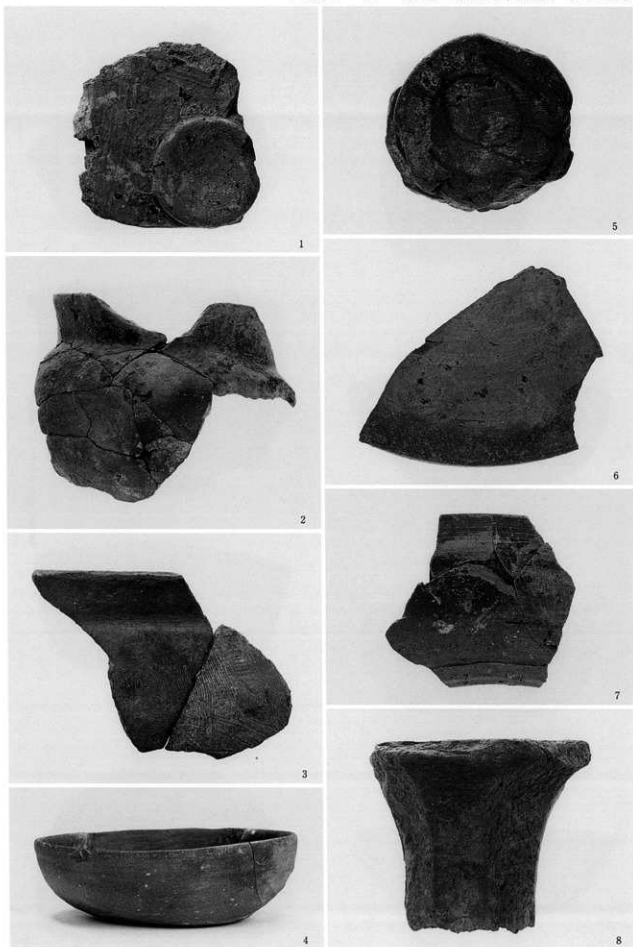


溝H-63 (1, 2, 5)・溝H-77 (6)・井戸H-10 (4)・谷埋土 (3)

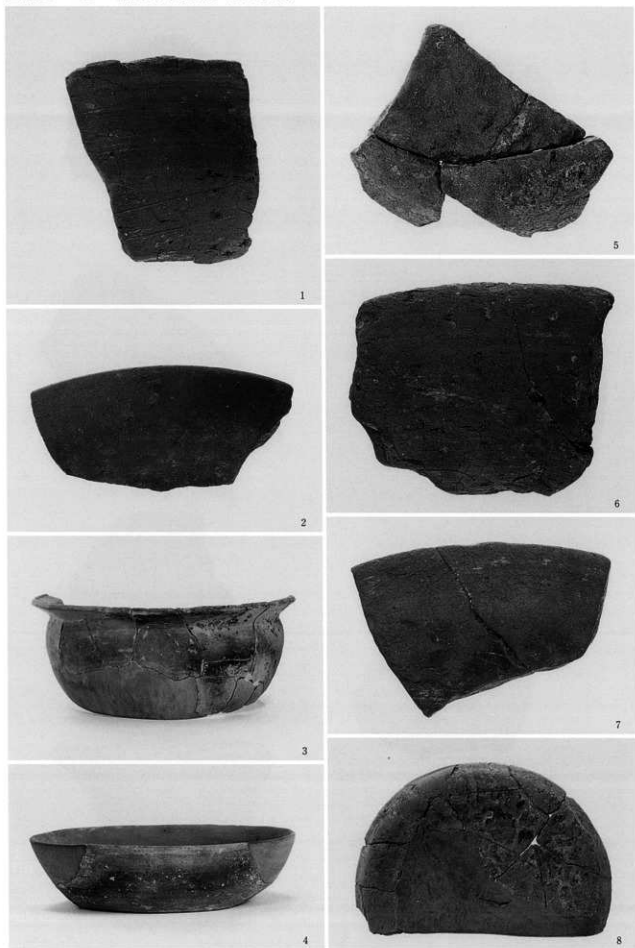




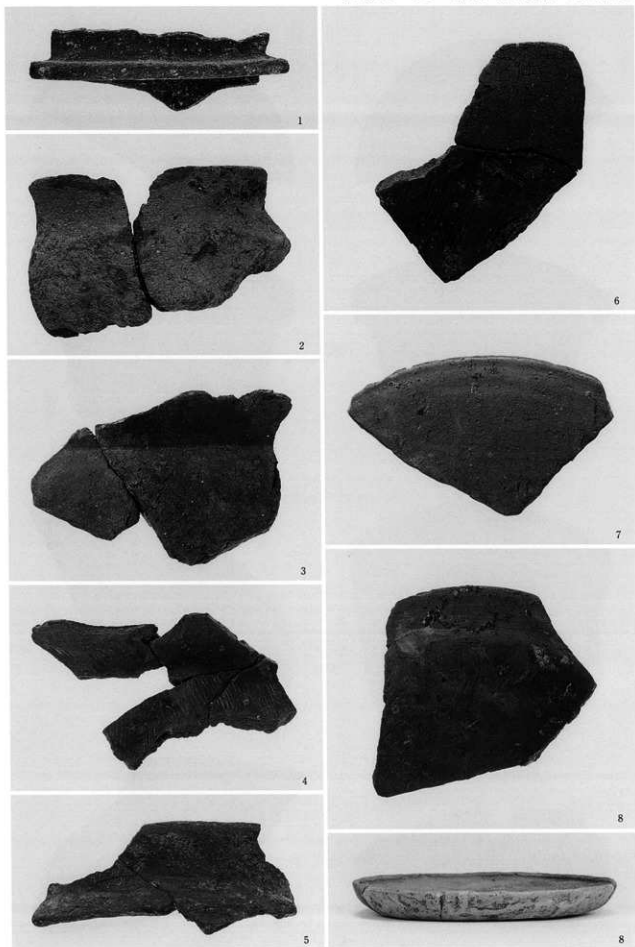




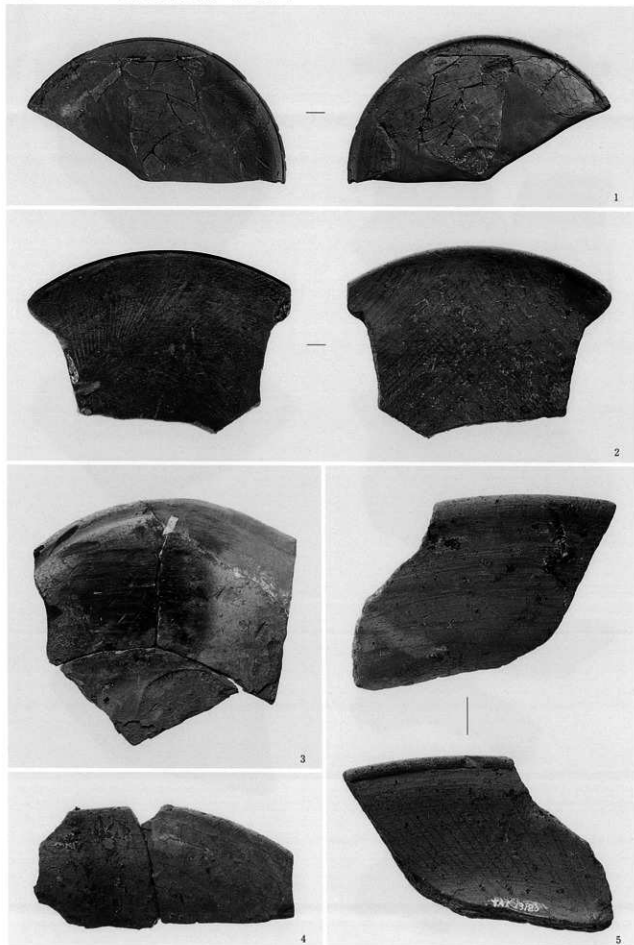
土坑H-39 (2~4)・土坑H-48 (1)・鑄造工房H-1 (5~7)・ピットH-208 (8)



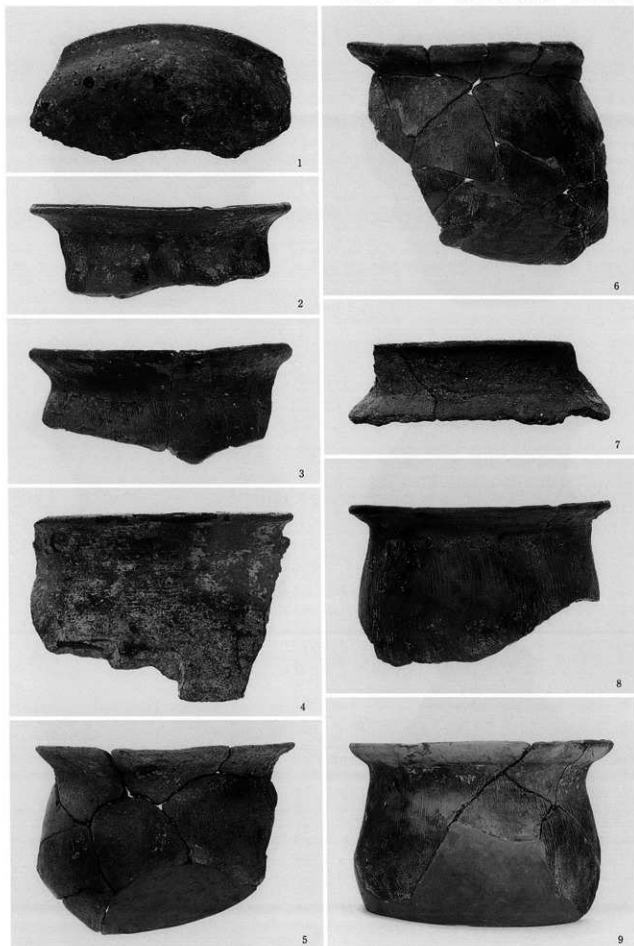
鑄造工房H-1 (1~4)・鑄造工房H-2 (5~8)



鑄造工房H-2 (1~5)・鑄造工房H-3 (6~9)







鑄造工房H-3 (1~8)・溝H-74 (9)