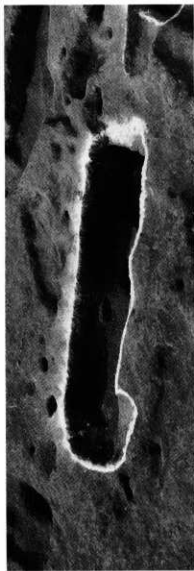
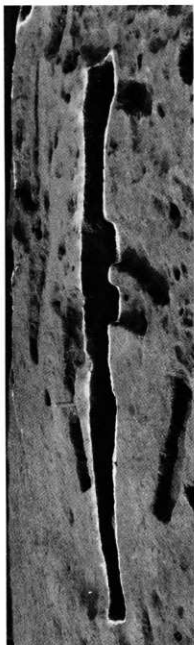


南谷ヒジリ遺跡SK05発掘状況(南より)



南谷ヒジリ遺跡SK06発掘状況(南より)



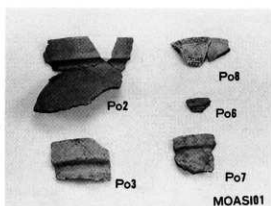
南谷ヒジリ遺跡SK07発掘状況(南より)



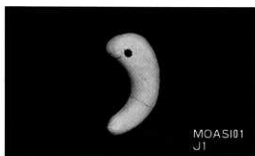
南谷ヒジリ遺跡SS02発掘状況(西より)



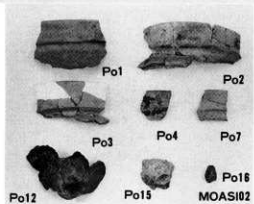
MOASI01
Po1



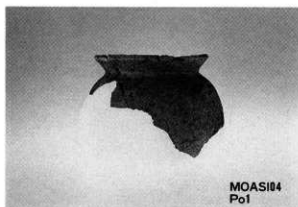
MOASI01



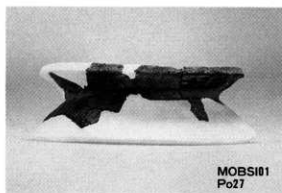
MOASI01
J1



MOASI02



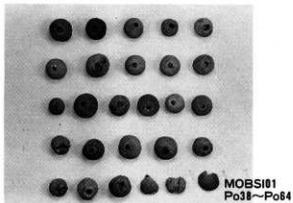
MOASI04
Po1



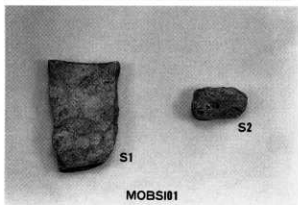
MOBSI01
Po27



MOBSI01 Po34



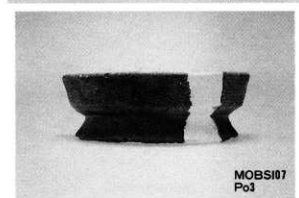
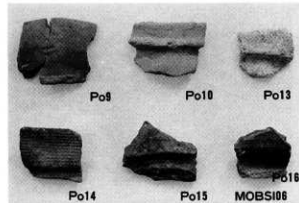
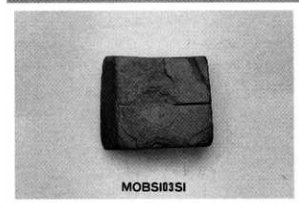
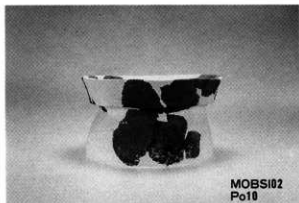
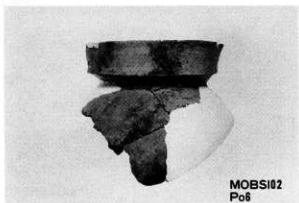
MOBSI01
Po31~Po34

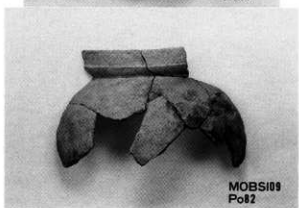
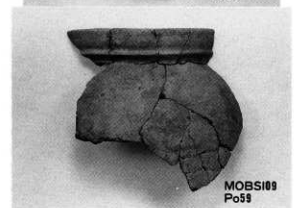
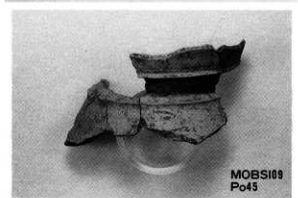
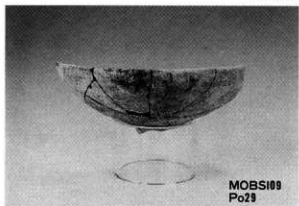


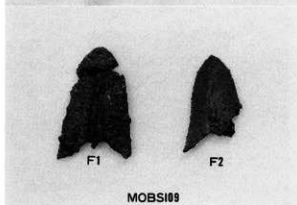
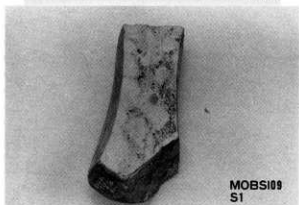
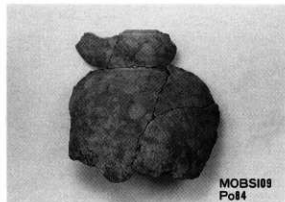
MOBSI01

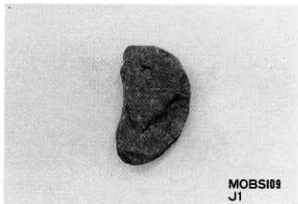


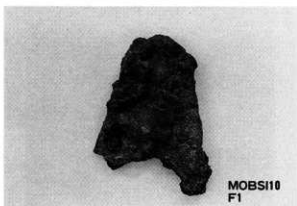
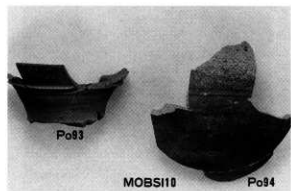
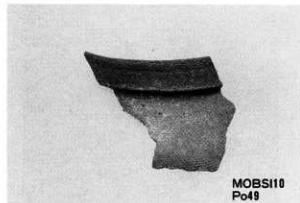
MOBSI02 Po5

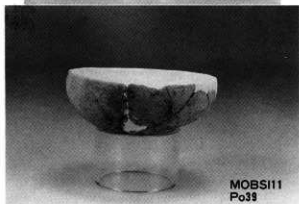
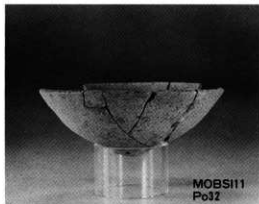














MOBS113
Po7



MOBS113
Po8



MOBS113
Po11



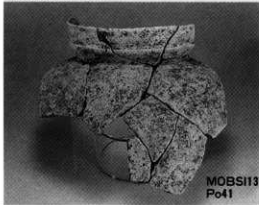
MOBS113
Po13



MOBS113 Po14



MOBS113
Po15



MOBS113
Po41



MOBS113
Po52



MOBS113
Po59



MOBS113
Po67



MOBS113
Po69



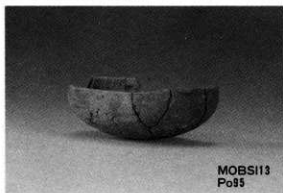
MOBS113
Po79



MOBS113
Po80



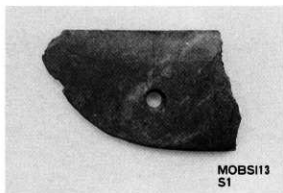
MOBS113
Po84



MOBS113
Po85



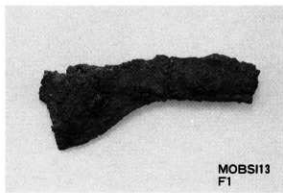
MOBS113
Po100



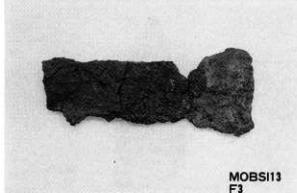
MOBS113
S1



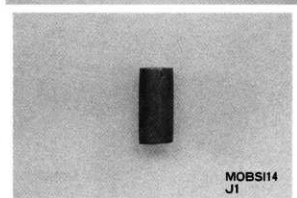
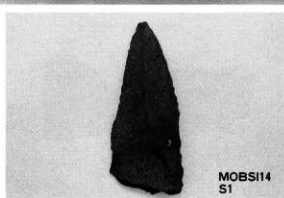
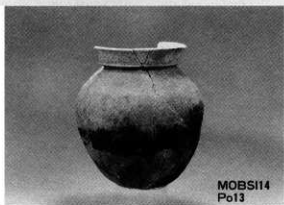
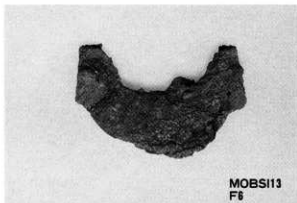
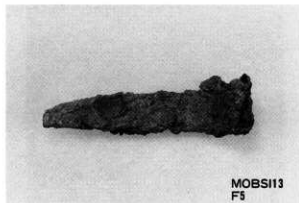
MOBS113
S2

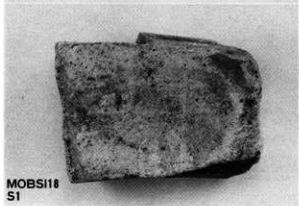
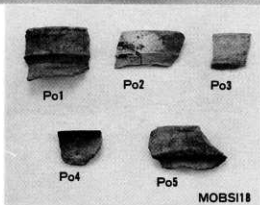
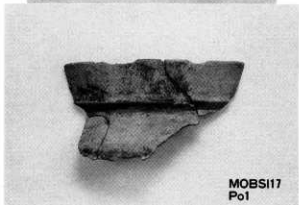
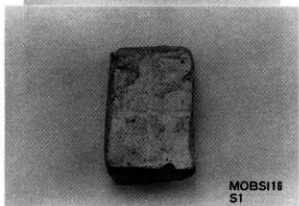
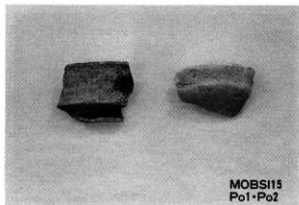


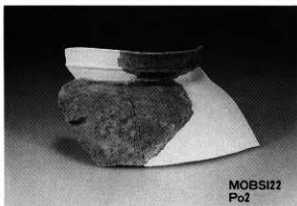
MOBS113
F1



MOBS113
F3

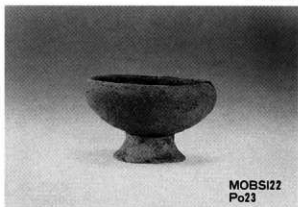




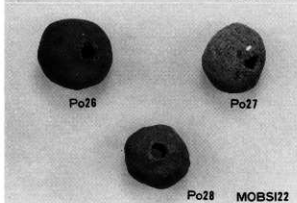




MOBSI22
Po21



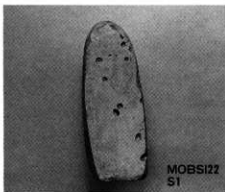
MOBSI22
Po23



Po26

Po27

Po28 MOBSI22



MOBSI22
S1



MOBSI22
S2



Po2

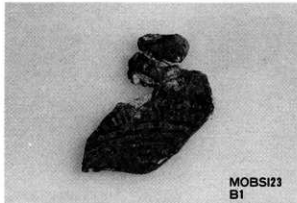


Po3

MOBSI23



Po4



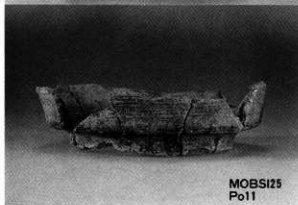
MOBSI23
B1



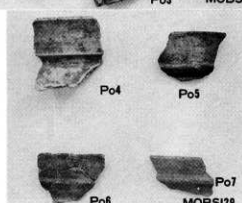
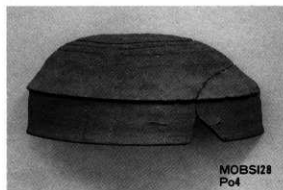
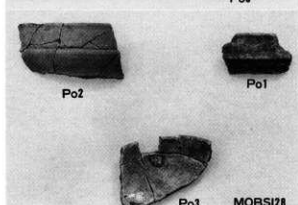
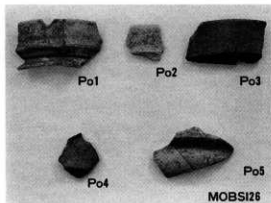
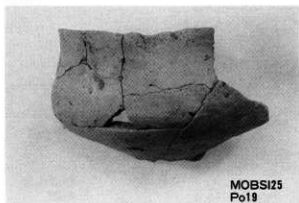
MOBSI24
Po3



MOBSI25
Po7



MOBSI25
Po11





MOBS130
Po2



MOBS130
Po3



MOBS130
Po4



MOBS130
Po5



MOBS130
Po27



MOBS130
Po29



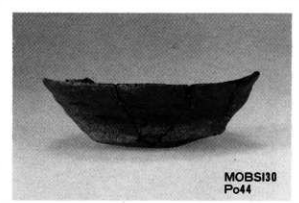
MOBS130
Po30



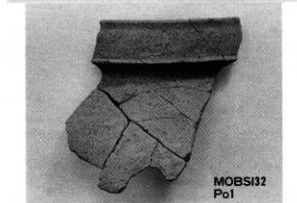
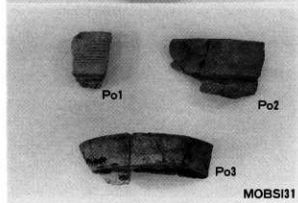
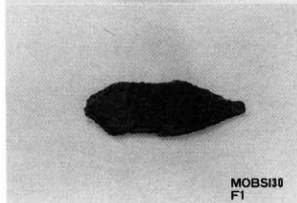
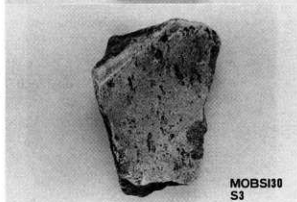
MOBS130
Po31



MOBS130
Po39



MOBS130
Po44

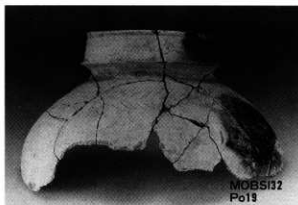




MOBSI32
Po13



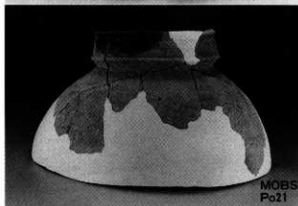
MOBSI32
Po18



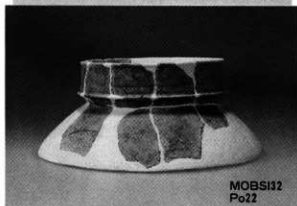
MOBSI32
Po19



MOBSI32
Po20



MOBSI32
Po21



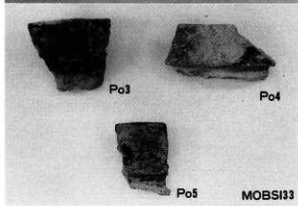
MOBSI32
Po22



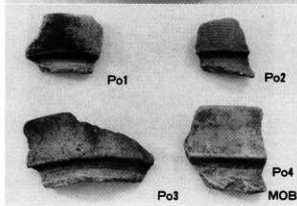
MOBSI32
Po23



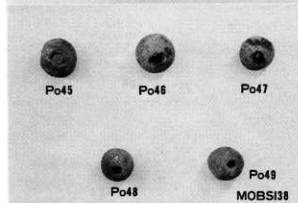
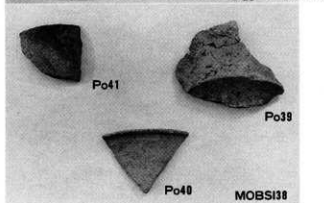
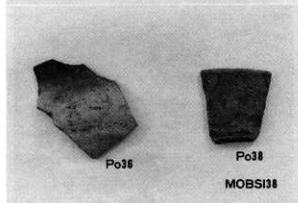
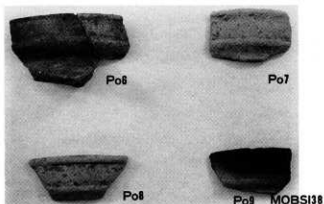
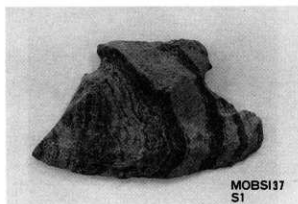
MOBSI32
S1

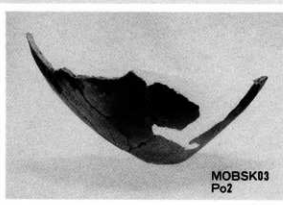
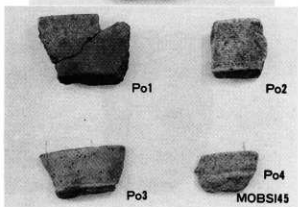
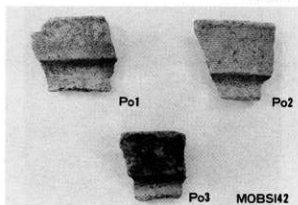
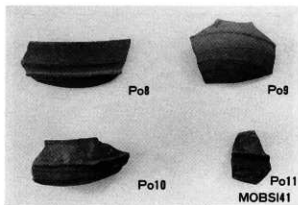


MOBSI33



MOBSI37







MOBSK04
Po1



MOBSK04
Po2



MOBSK04
Po5



MOBSK04
Po6



MOBSK04
Po21



MOBSK04
Po22



MOBSK04
Po31



MOBSK04
Po32



ヤマトシジミ

マガキ

イシマキガイ

BSK04出土貝類



MOBSK04
Po1



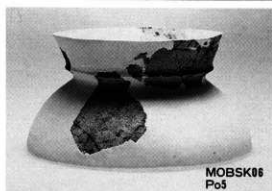
MOBSK06
Po2



MOBSK06
Po3



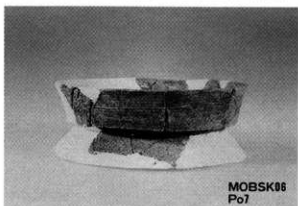
MOBSK06
Po4



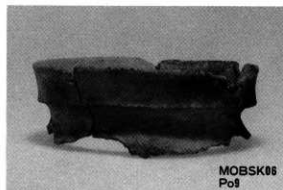
MOBSK06
Po5



MOBSK06
Po6



MOBSK06
Po7



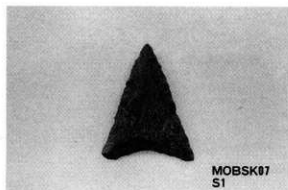
MOBSK06
Po8



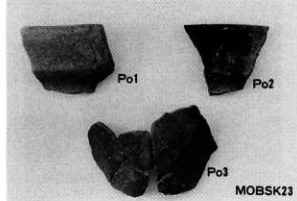
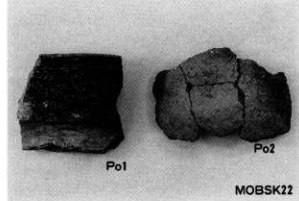
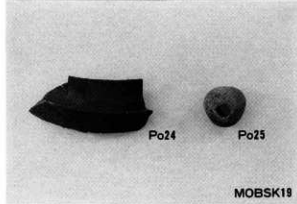
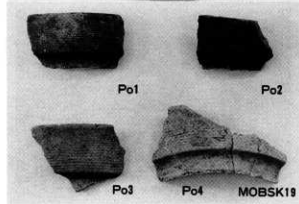
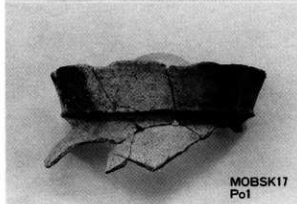
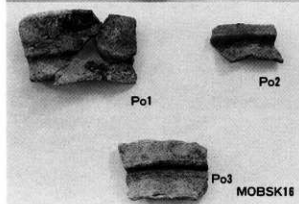
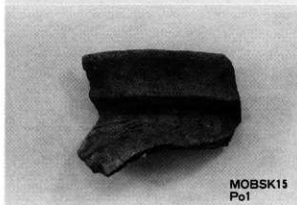
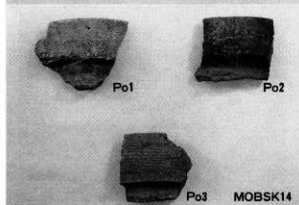
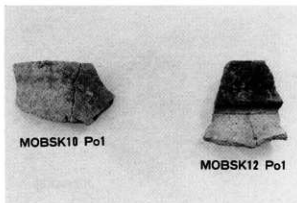
MOBSK07
Po1

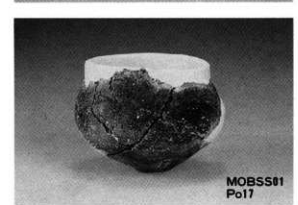
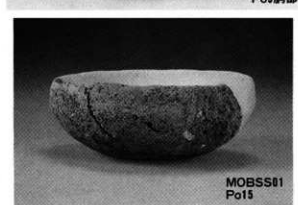
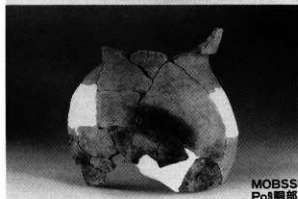
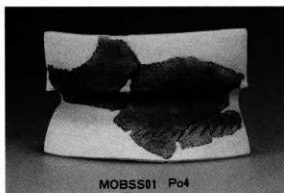


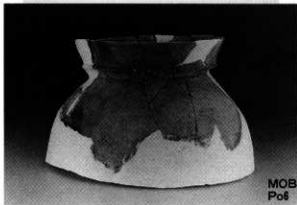
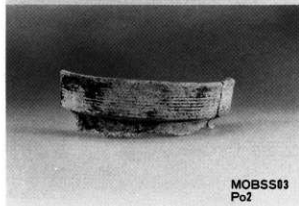
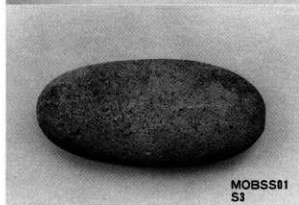
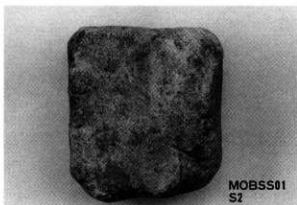
MOBSK01
Po2



MOBSK07
S1





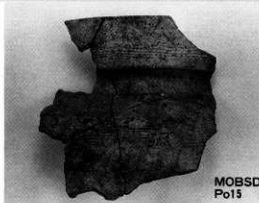




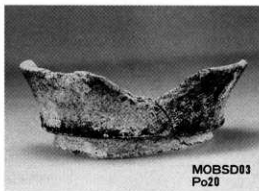
MOBSS04
Po22



MOBSS04
Po33



MOBSD03
Po15



MOBSD03
Po20



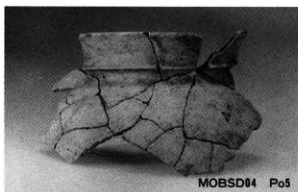
MOBSD03
Po45



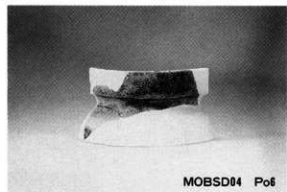
MOBSD03
Po48



MOBSD04 Po1



MOBSD04 Po5



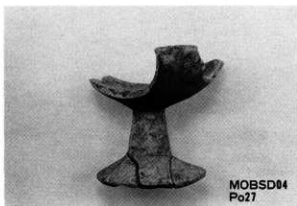
MOBSD04 Po6



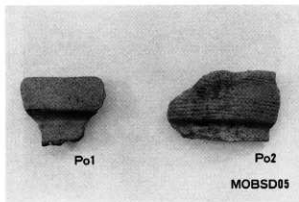
MOBSD04 Po13



MOBSD04
Po14



MOBSD04
Po27



Po1

Po2

MOBSD03



MOA区遺構外
S1



MOA区遺構外
S2



1992年度MOB区遺構外
Po45外面



1992年度MOB区遺構外
Po45内面



1992年度MOB区遺構外

Po67



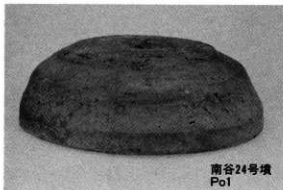
1992年度MOB区遺構外Po67接合痕



1992年度MOB区遺構外
Po68



1992年度MOB区遺構外
S1



南谷24号墳
Po1



南谷24号墳
Po2



南谷24号墳
Po4



南谷24号墳
Po3



南谷24号墳
Po5



南谷24号墳
Po7



南谷24号墳第2主体部
出土歯牙



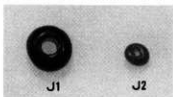
南谷24号墳
Po8



南谷24号墳
Po9



F1



J1

J2

南谷24号墳第2主体部

南谷24号墳第2主体部



南谷24号墳盛土内
Po11



南谷24号墳盛土内
Po12

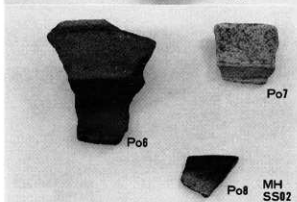




南谷27号墳
Po1



南谷27号墳
Po4



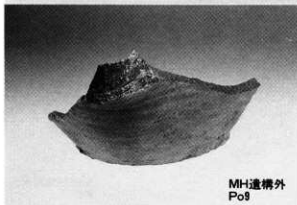
Po7

Po6

Po8 MH
SS02



MH
遺構外S1



MH遺構外
Po9



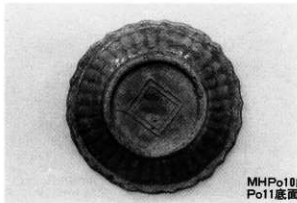
MH遺構外
Po10



MHPo10内出土
Po11



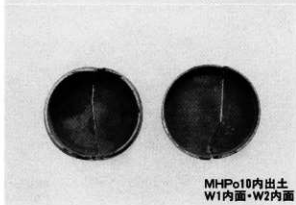
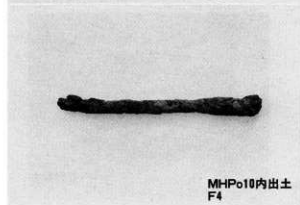
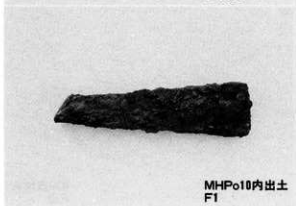
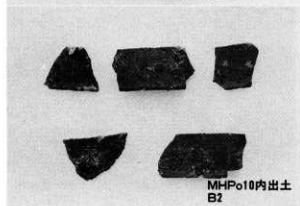
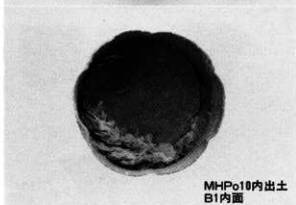
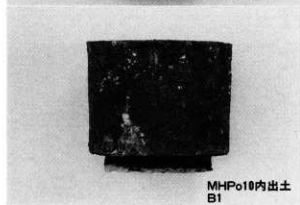
MHPo10内出土
Po11内面

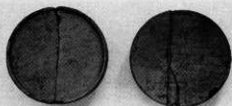


MHPo10内出土
Po11底面



MHPo10内出土
Po12





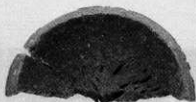
MHPo10内出土
W1底面・W2底面



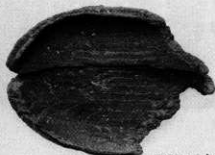
MHPo10内出土
W3底面



MHPo10内出土
W4裏面



MHPo10内出土
W5裏面



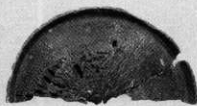
MHPo10内出土
W7



MHPo10内出土
W3



MHPo10内出土
W4



MHPo10内出土
W5



MHPo10内出土
W6



MHPo10内出土
W7裏面

特論 1-1

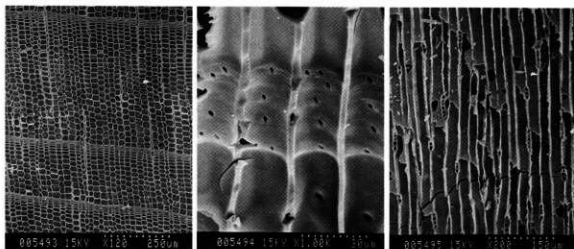


写真1 ヒノキ

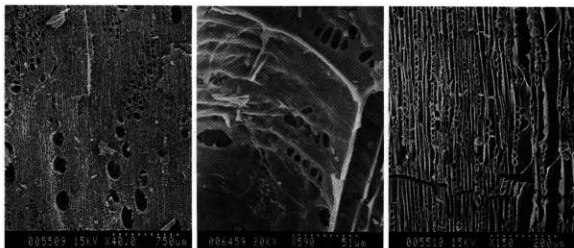


写真2 スグシイ

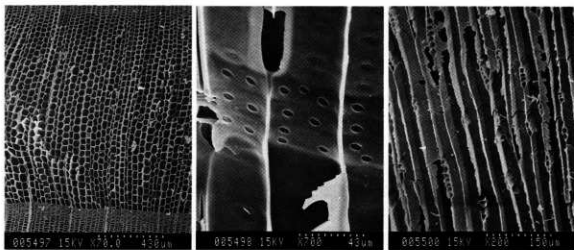


写真3 スギ

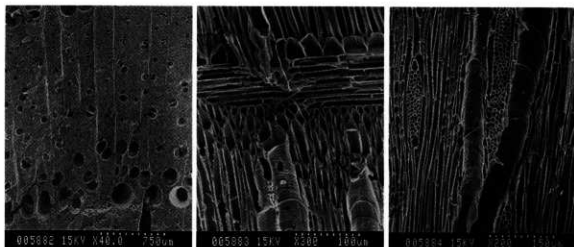


写真4 ヤマグチ

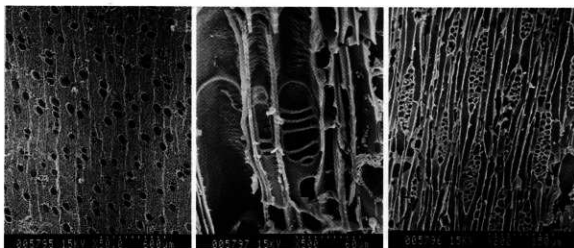


写真5 タブノキ

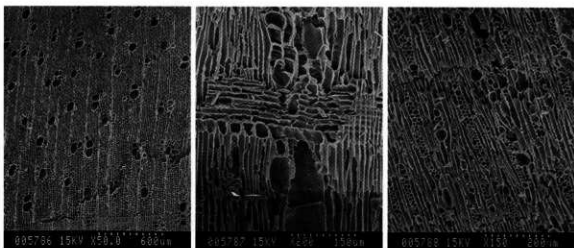


写真6 クスノキ

特論 1-3



写真7 クリ

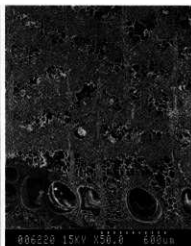


写真8 ケヤキ

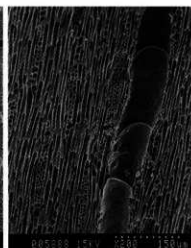
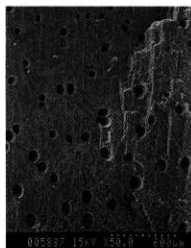
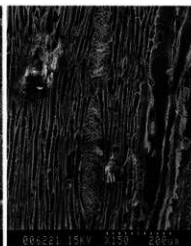


写真9 ムクノキ

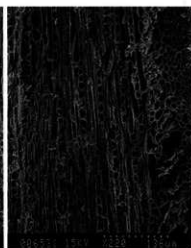
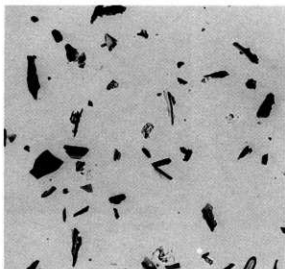
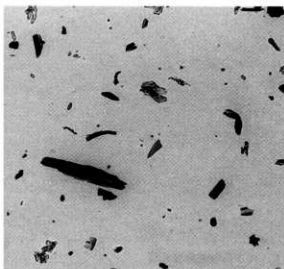


写真10 カシ類

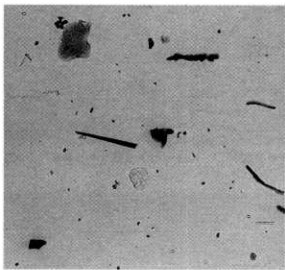
南谷大山遺跡の顕微鏡写真(土壌試料)



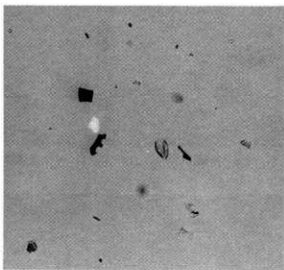
1 試料 1



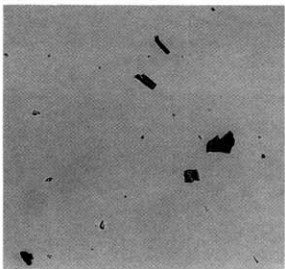
2 試料 2



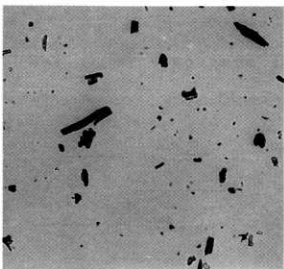
3 試料 3



4 試料 4



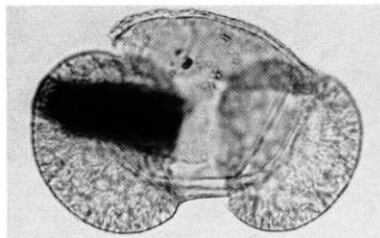
5 試料 5



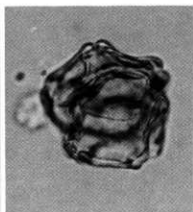
6 試料 6

特論 3-2

南谷大山遺跡の花粉遺体



1 マツ属複維管束亜属



2 ハンノキ属



3 ハンノキ属



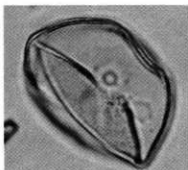
4 コナラ属コナラ亜属



5 コナラ属コナラ亜属



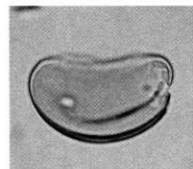
6 カラマツソウ属



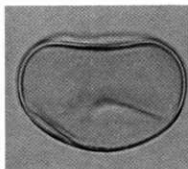
7 イネ科



8 ヨモギ属



9 シダ植物単条溝胞子



10 シダ植物単条溝胞子

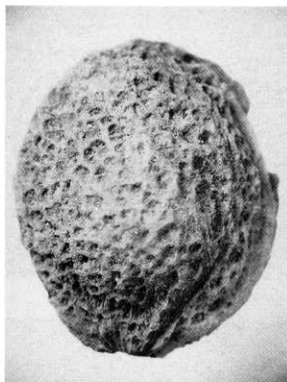


11 シダ植物三条溝胞子

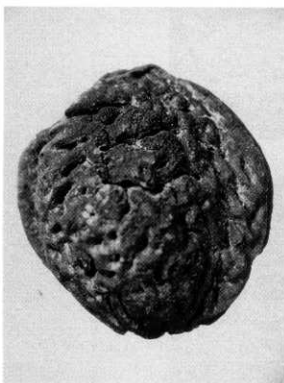
南谷大山遺跡の種実遺体



1 試料1 モモ核



2 試料2 ウメ核



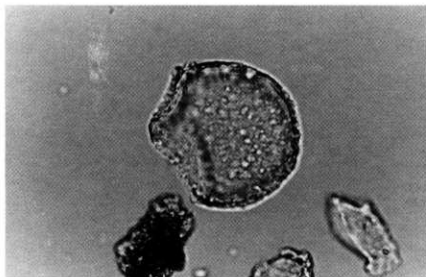
3 試料3 モモ核



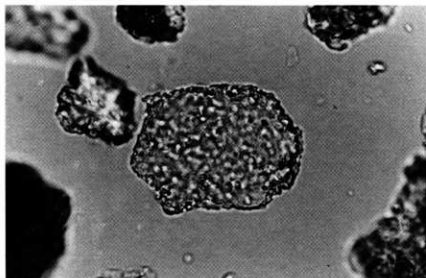
4 同左

特論 3-4

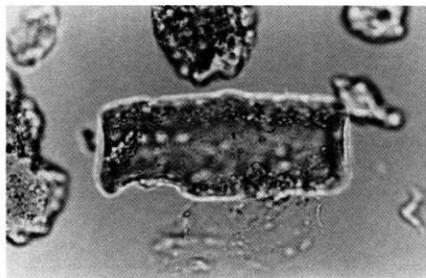
植物珪酸体の顕微鏡写真 (B区7号土坑 底部土壤)



1 ヨシ属



2 ヨシ属

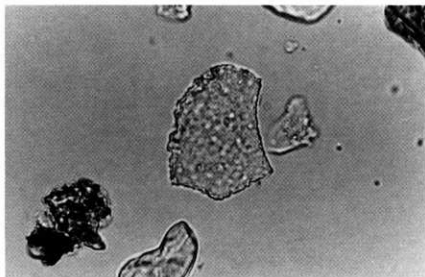


3 イネ科Aタイプ
(キビ族類似)

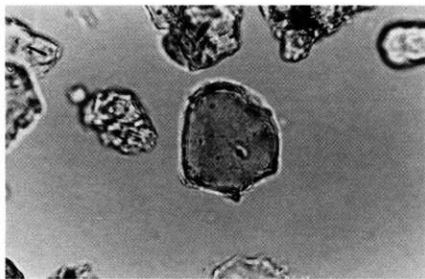
0 50 100 μ m

植物珪酸体の顕微鏡写真 (B区7号土坑 底部土壌)

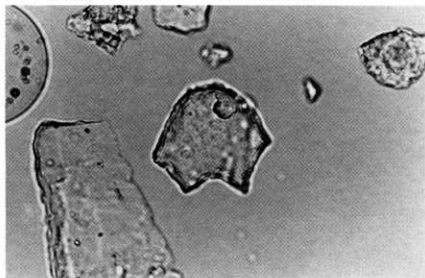
4 タケ亜科B1タイプ
(クマザサ属)



5 タケ亜科B1タイプ
(クマザサ属)



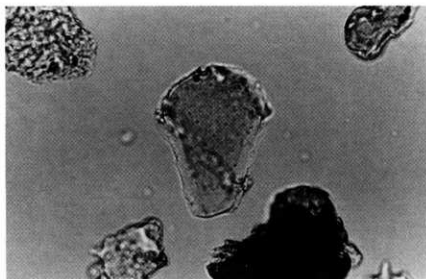
5 タケ亜科B1タイプ
(クマザサ属)



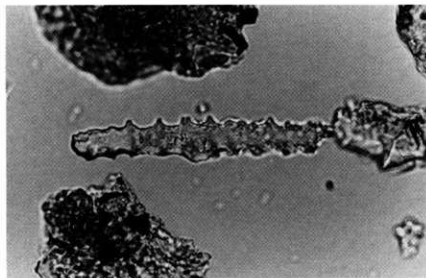
0 50 100 μ m

特論 3 - 6

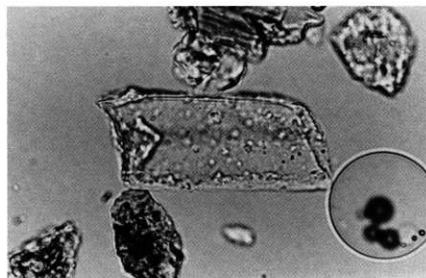
植物珪酸体の顕微鏡写真 (B区7号土坑 底部土壤)



7 タケ亜科 (その他)



8 棒状珪酸体



9 イネ科の基部起源

0 50 100 μ m

鳥取県教育文化財団調査報告書32
一般国道9号(羽合道路)改築工事に伴う
埋蔵文化財発掘調査報告書Ⅲ
鳥取県東伯郡羽合町

南谷大山遺跡
南谷ヒジリ遺跡
南谷22・24～28号墳

発行 1993・3・31
発行者 財団法人 鳥取県教育文化財団
〒680 鳥取市東町1丁目271番地
電話 鳥取(0857)26-8397
印刷 山本印刷株式会社
倉吉市広栄町971-21番地
電話 倉吉(0858)22-6171