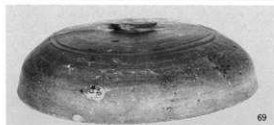




94



43



69



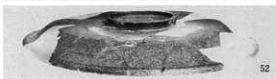
72



70



46



52



95



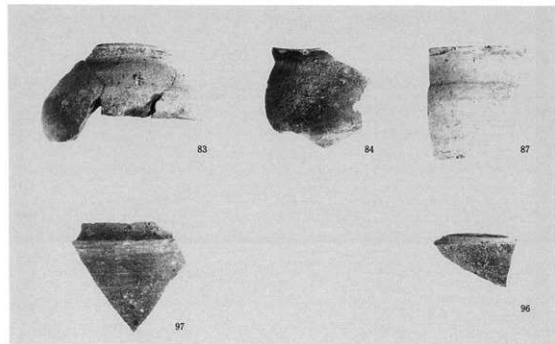
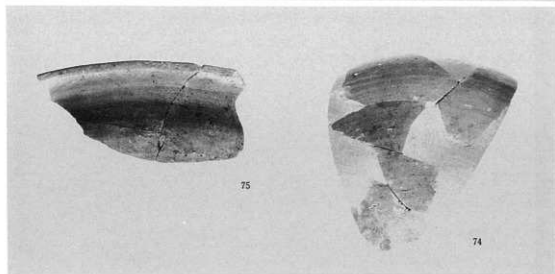
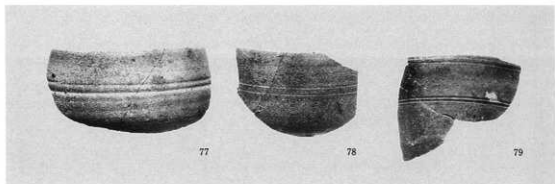
58



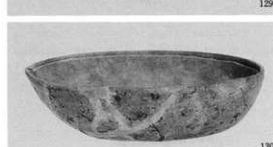
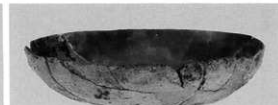
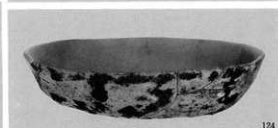
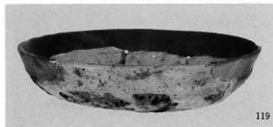
60

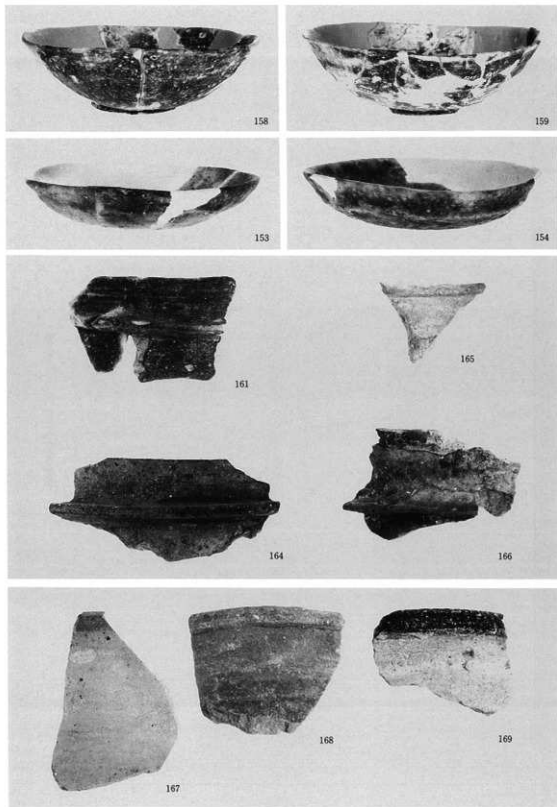


67

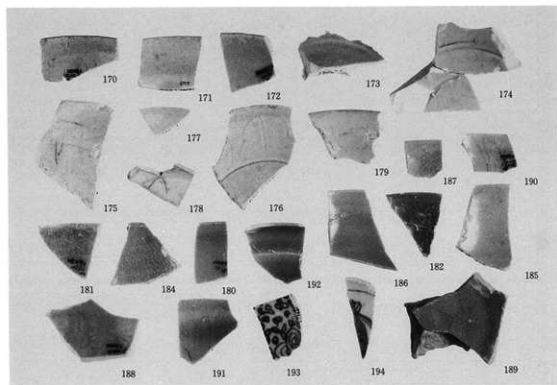
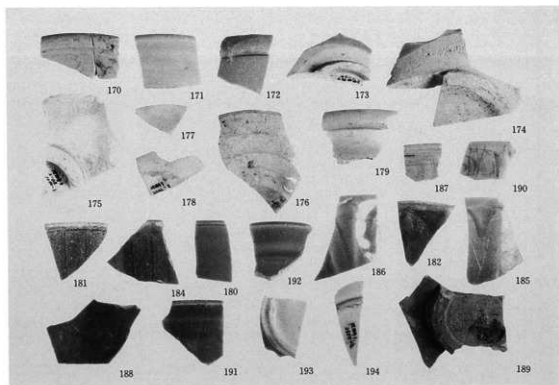








包含層出土遺物 (瓦器・瓦器系・土師器系・須恵器系土器)



包含層出土遺物 (陶磁器)



195



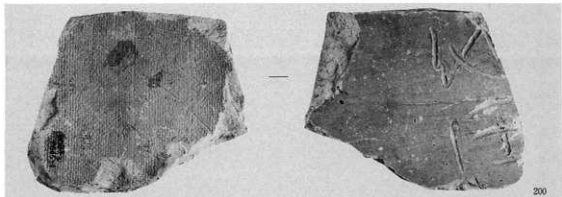
196



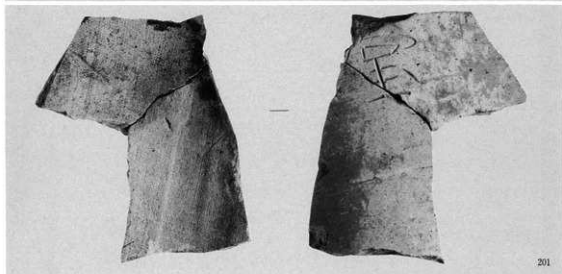
198



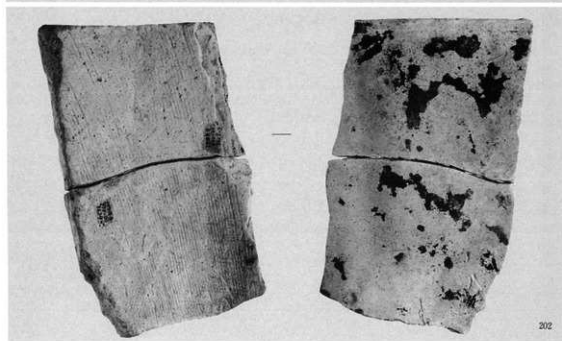
197



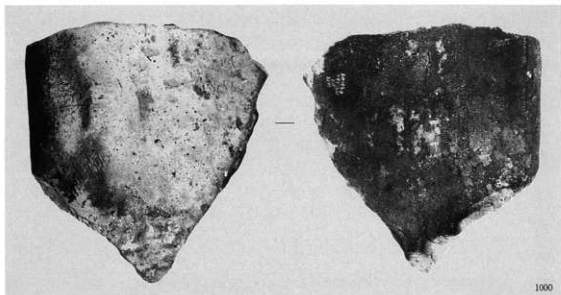
200



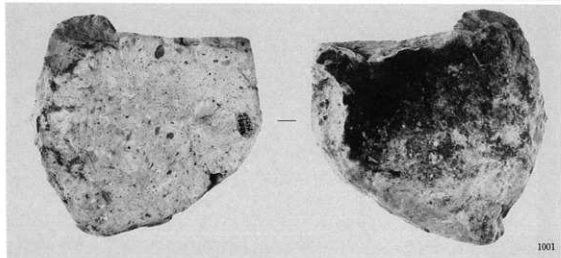
201



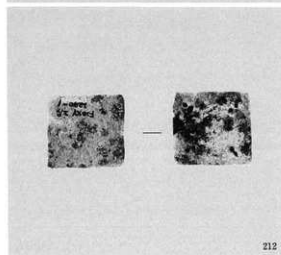
202



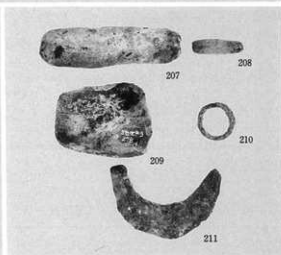
1000

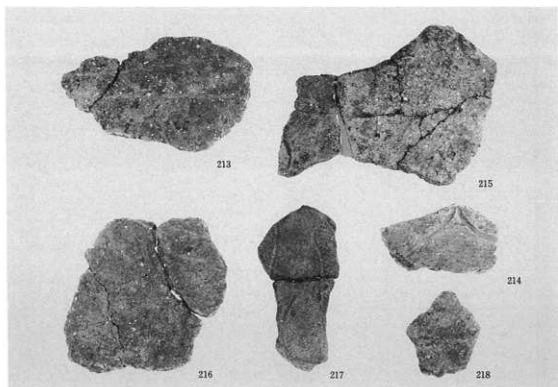


1001

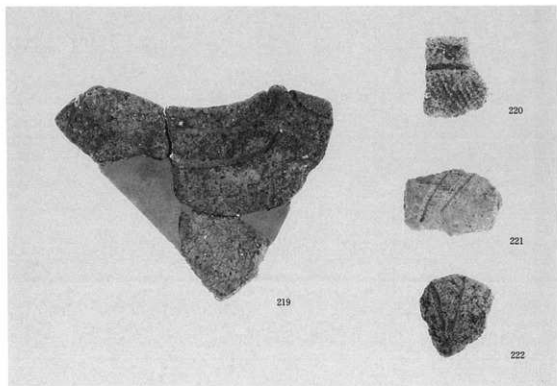


212

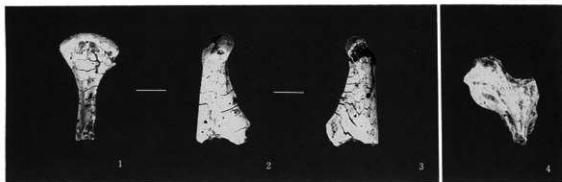




2506-〇〇出土遺物

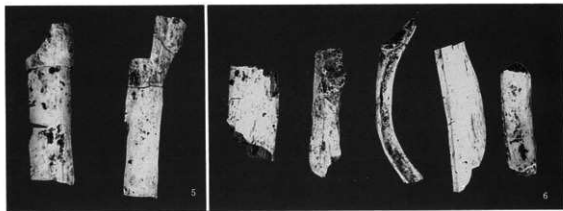


2503-〇〇出土遺物



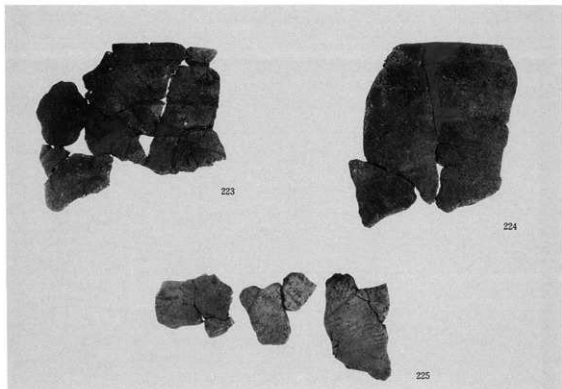
1. ヒト 左 下顎骨の関節頭 前面
 2. 同 上 内側面
 3. 同 上 外側面
 4. ヒト 胸椎の椎弓 上面

S=1/1

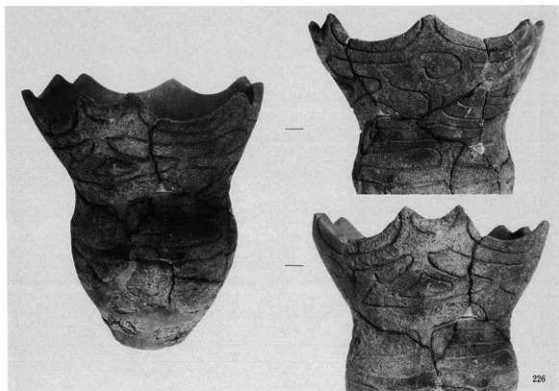


5. 大型哺乳類 長骨の骨体
 6. 大型哺乳類 肋骨

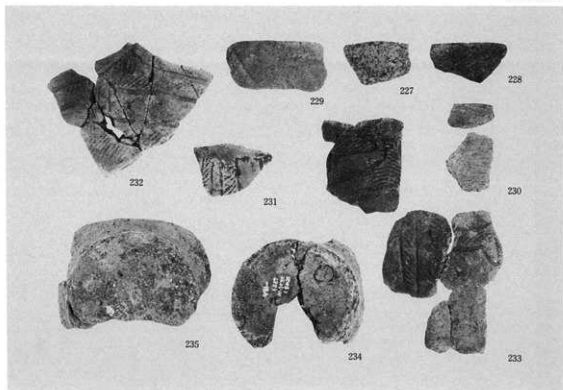
S=1/1



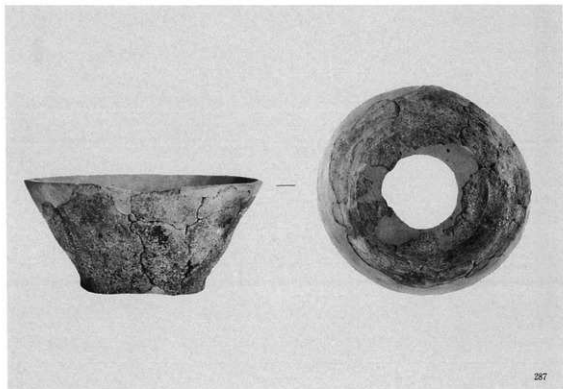
2525-00出土遺物



2525-00出土遺物

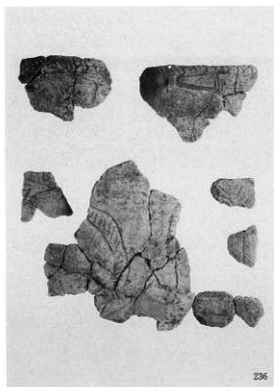


2525—〇〇出土遺物

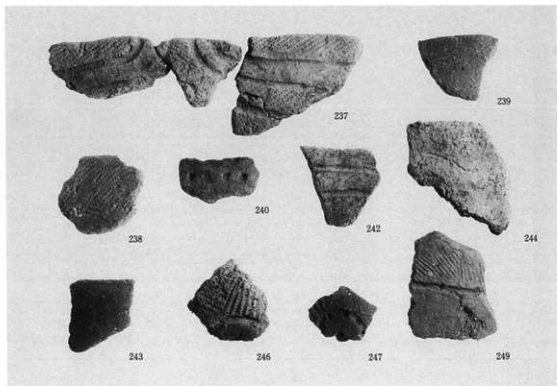


287

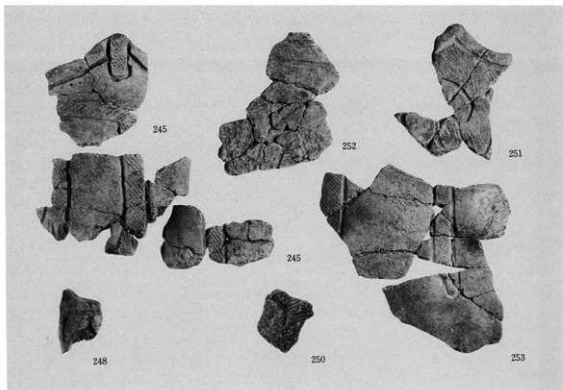
3038—〇〇出土遺物



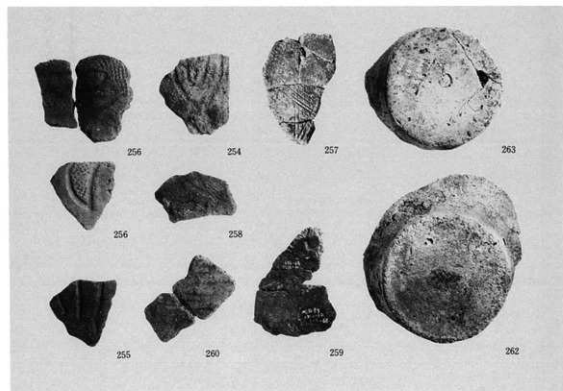
2510-00出土遺物



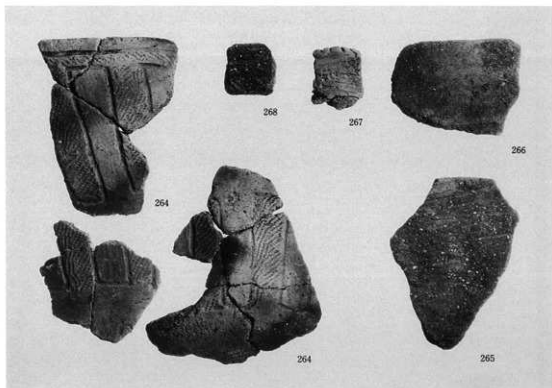
2510-00出土遺物



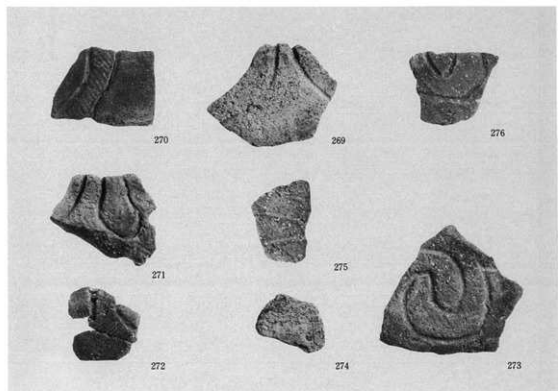
251—〇〇出土遺物



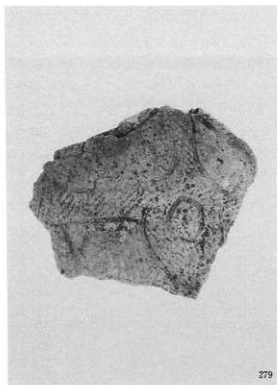
251—〇〇出土遺物



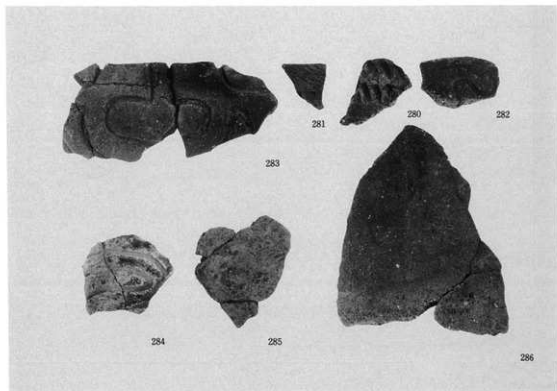
3569—〇〇出土遺物



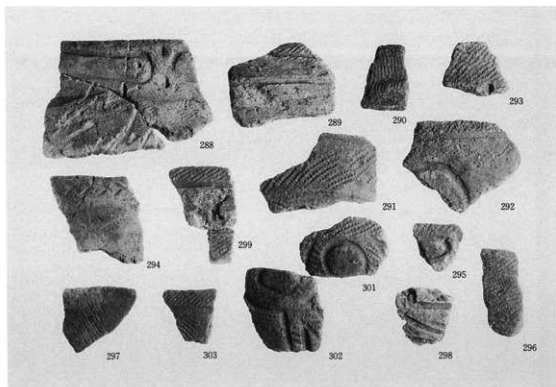
3569—〇〇出土遺物



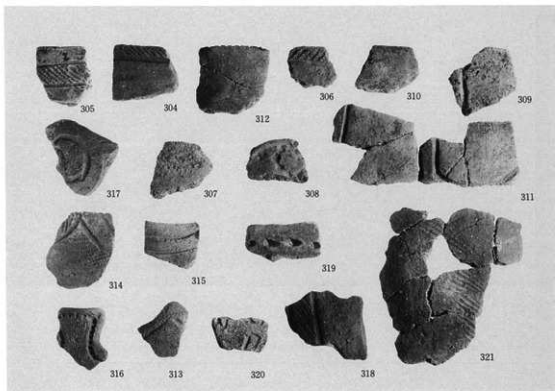
2000-O O 出土遺物



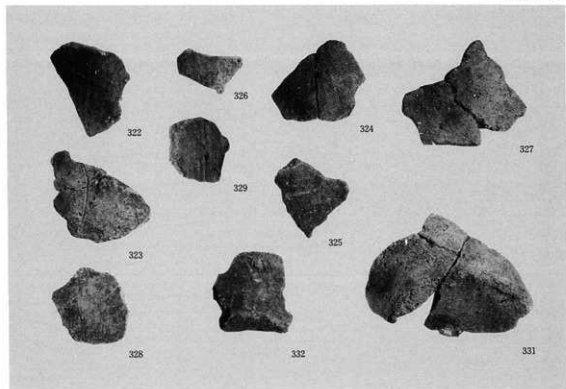
2000-O O 出土遺物



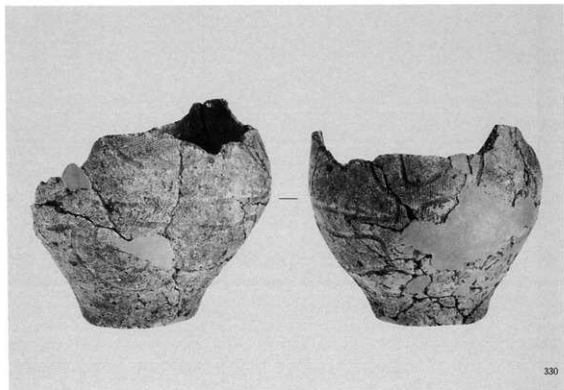
3310—〇〇出土遺物



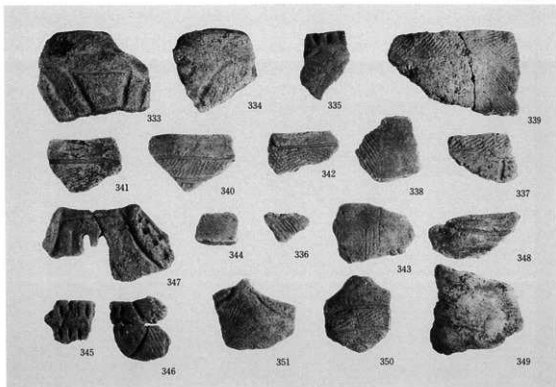
3310—〇〇出土遺物



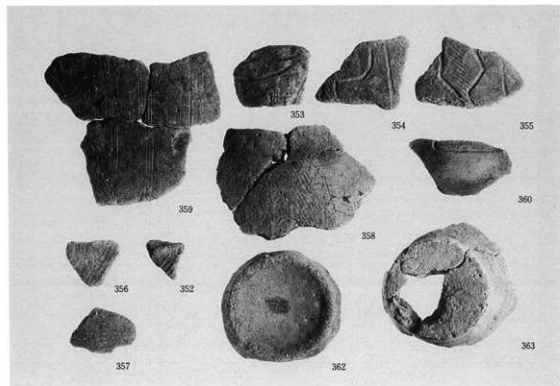
3310—00出土遺物



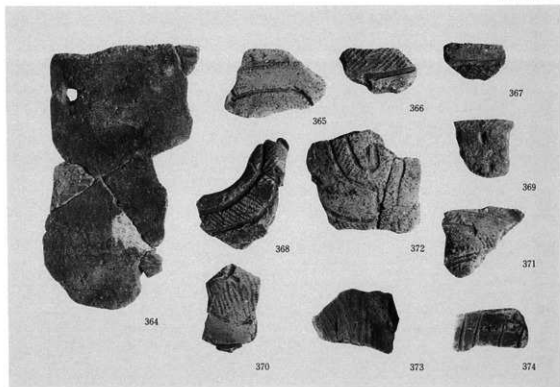
3310—00出土遺物



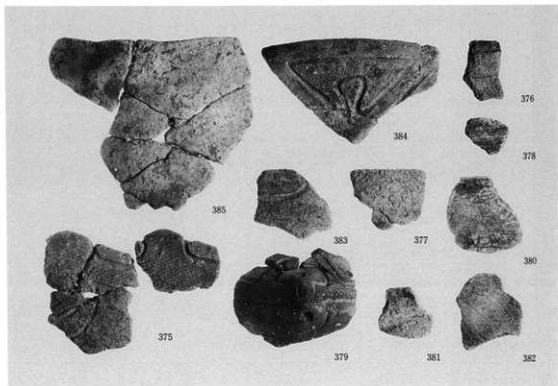
2860—〇〇出土遺物



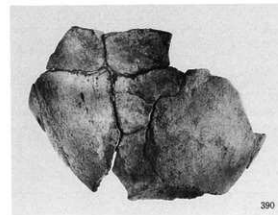
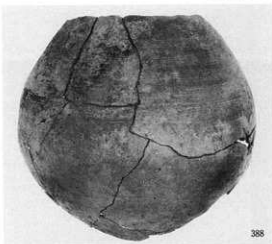
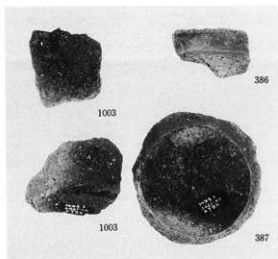
2860—〇〇出土遺物



3599—O O 出土遺物



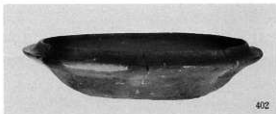
2519・2520・2521・2522・2561・3426・3363—O O 出土遺物







399



402



400



403



401



405



404



407



406



408

