



19



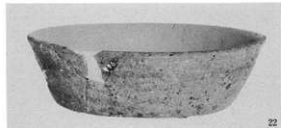
28



21



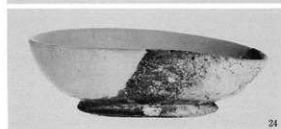
38



22



20



24



31



25



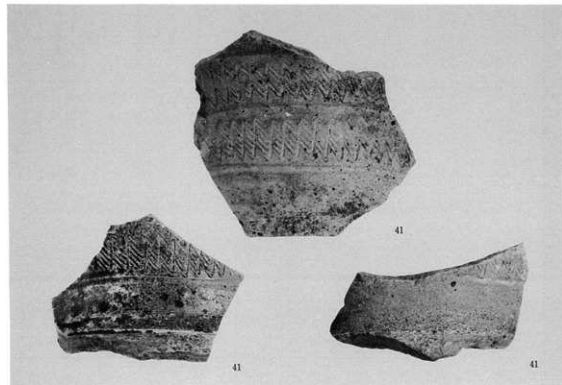
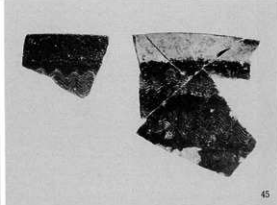
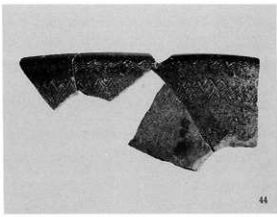
32

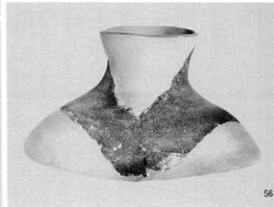
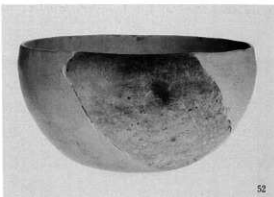


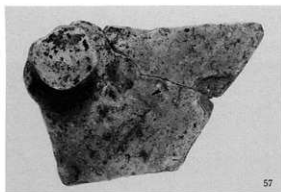
27



36







57



62



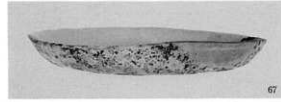
63



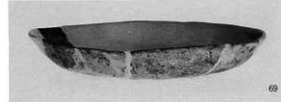
65



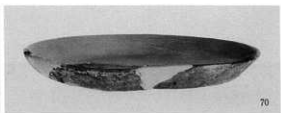
66



67



69



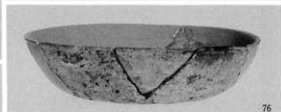
70



74



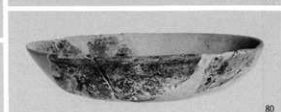
75



76



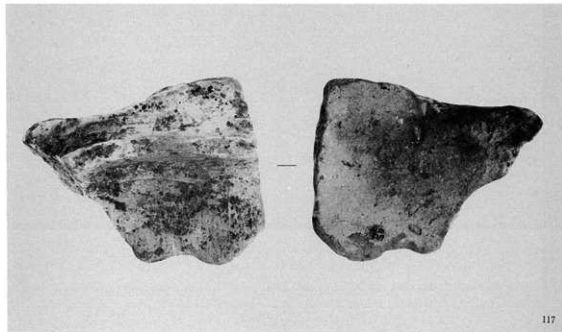
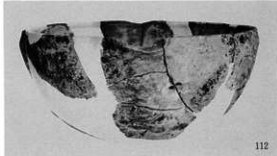
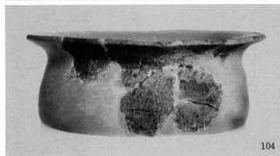
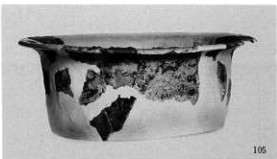
78

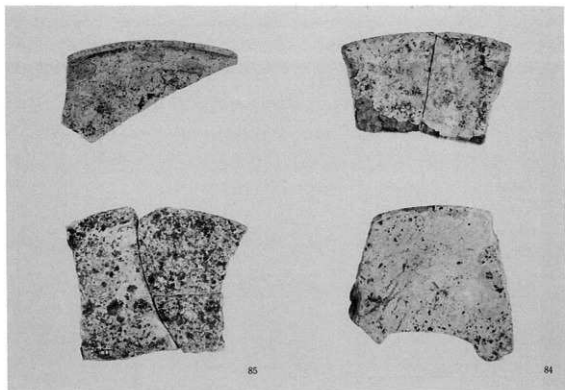


80

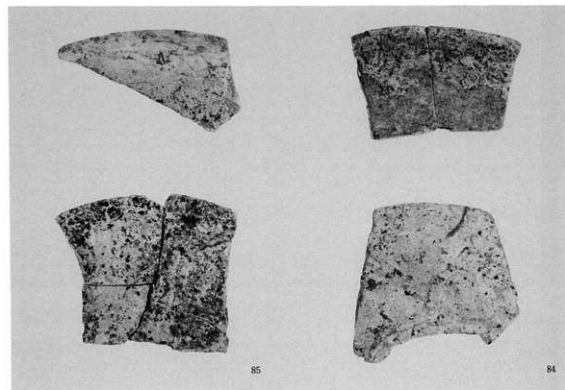


81

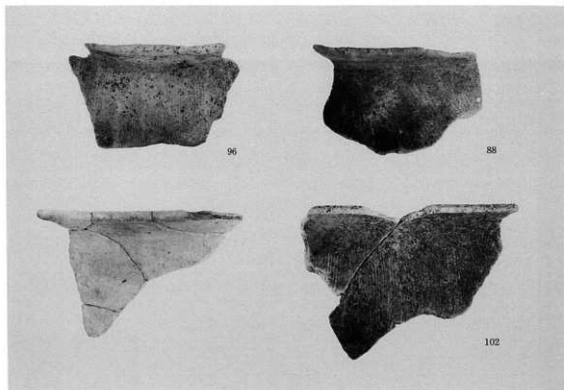




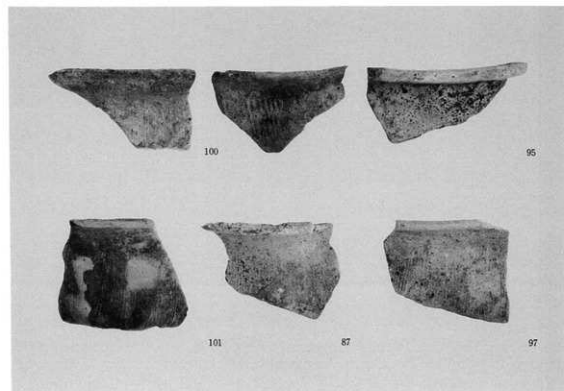
土師器高環(内面)



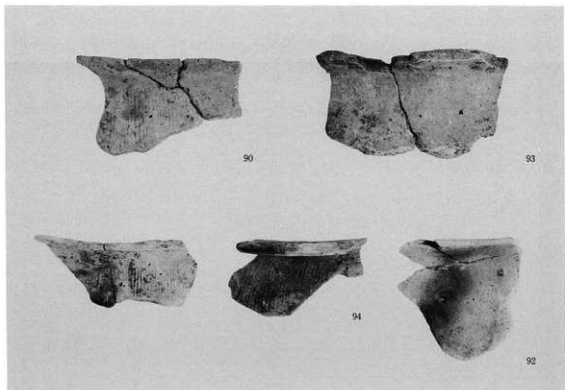
土師器高環(外面)



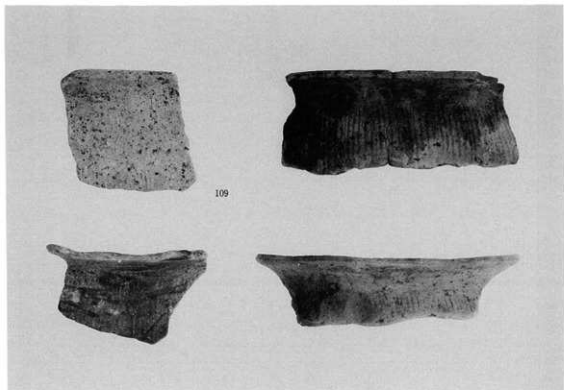
土師器 甕



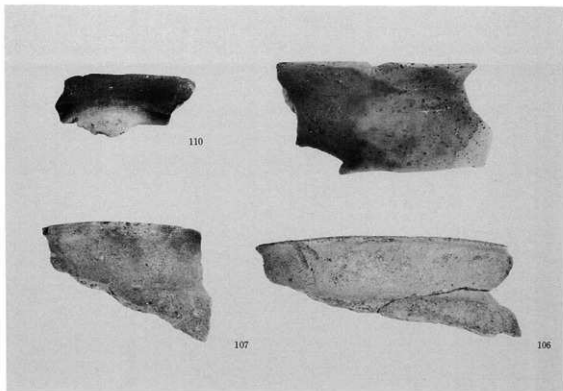
土師器 甕



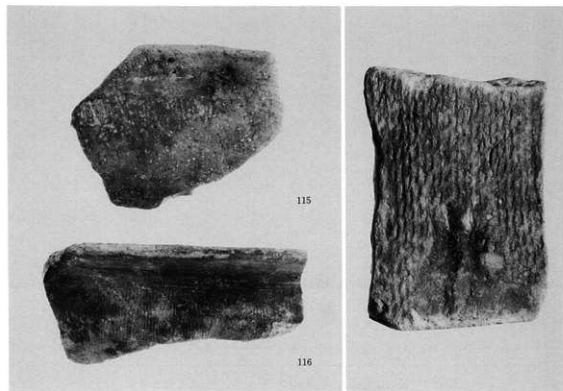
土師器片



土師器片



土師器甕



土師器鍋

平瓦



168-8



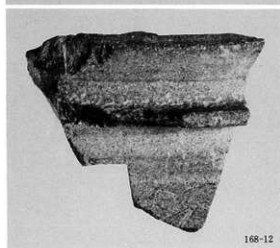
168-4



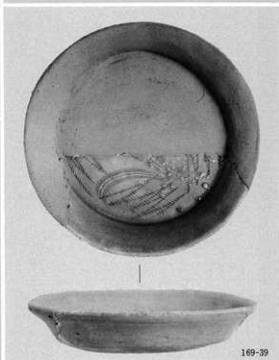
168-3



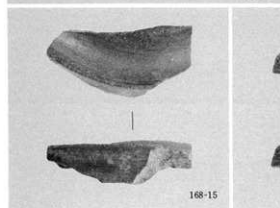
168-2



168-12



169-39



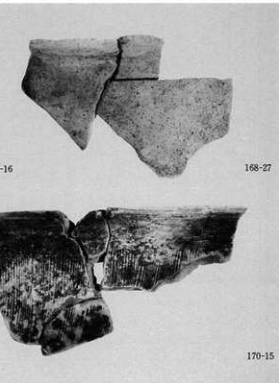
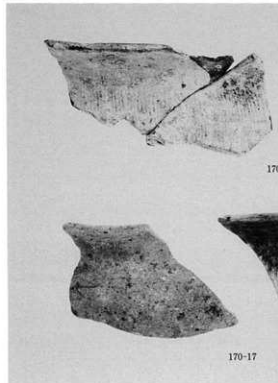
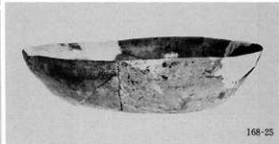
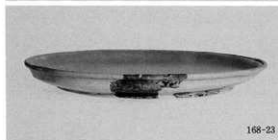
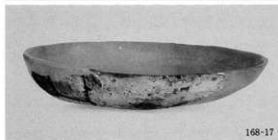
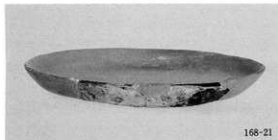
168-15

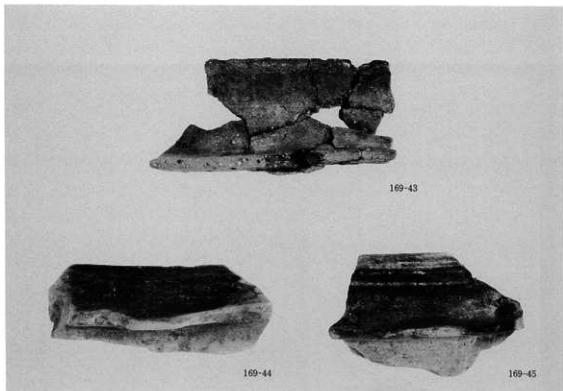


168-14

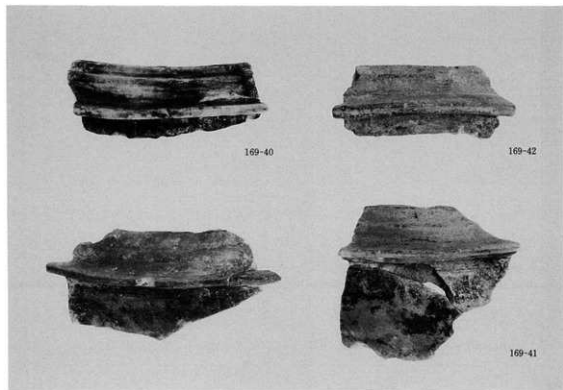


168-13

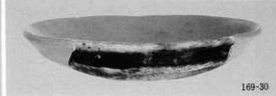
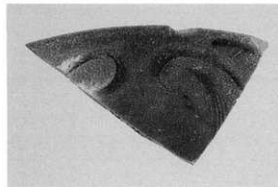
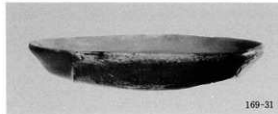
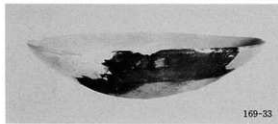
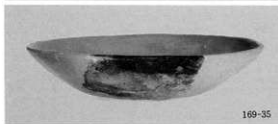


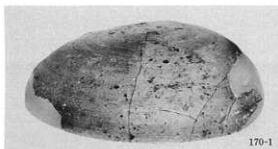


土師質・瓦質土器羽釜



瓦質土器羽釜





170-1



170-2



170-3



170-4



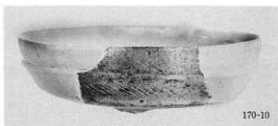
170-5



170-8



170-7



170-10



170-11



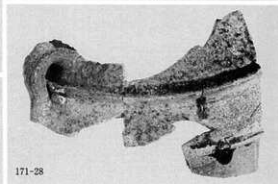
170-14



170-18



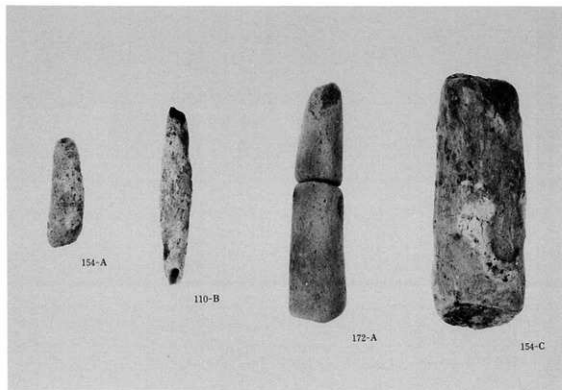
171-21

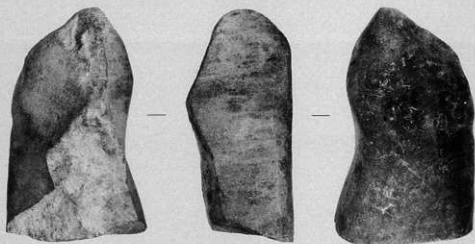


171-28

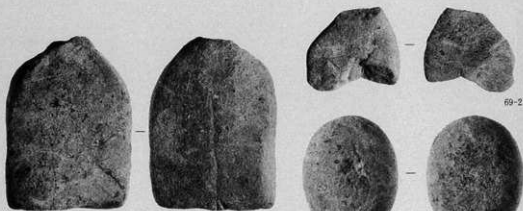


燃えさし (A : 0002—OD)





155-I



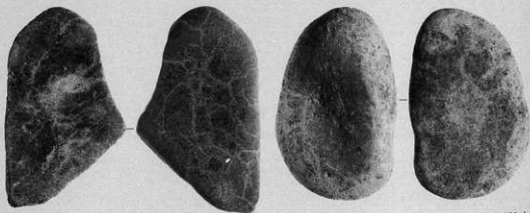
69-2



127-E

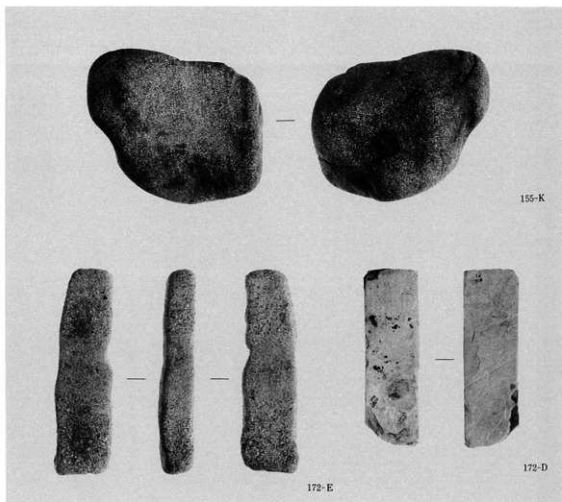


74-1

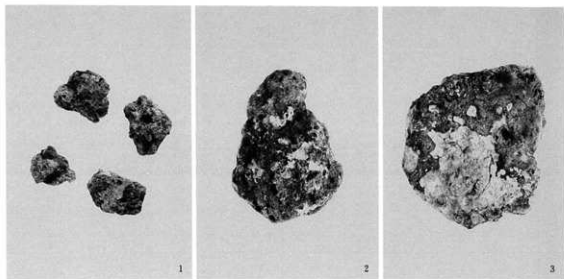


69-1

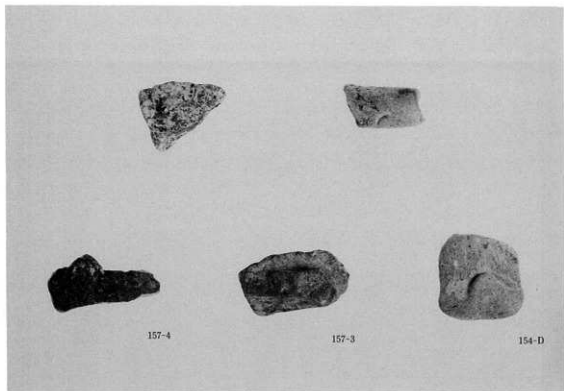
155-J



使用痕のある石器



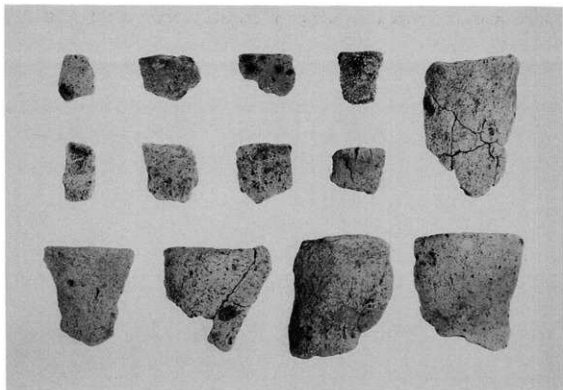
鉄滓 (1: 3033-OS, 2: 3034-OS, 3: 2015-00)



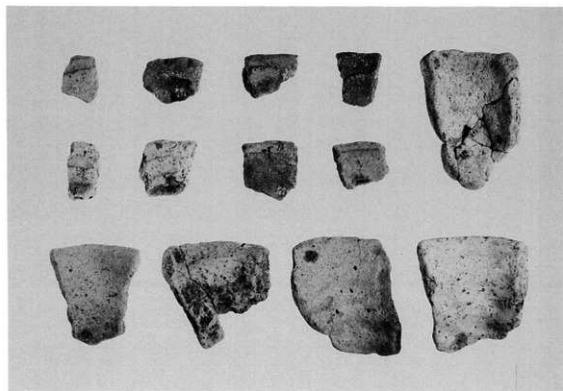
ミニチュア土製品 (上段は3033-O S)



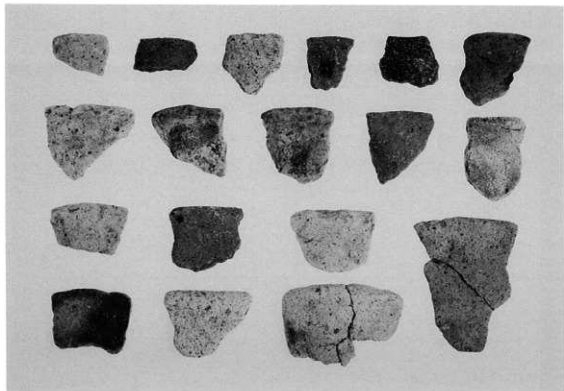
5041-O X出土製塩土器一括



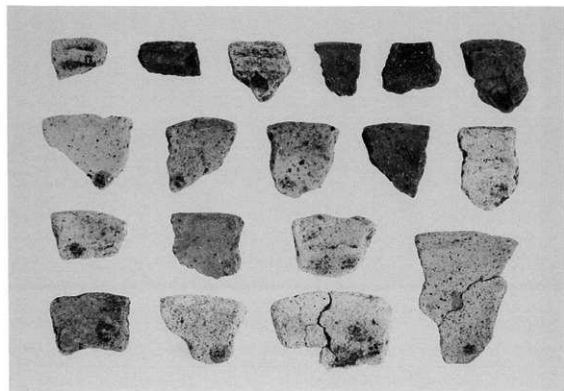
5041-O X出土製塩土器(外面)



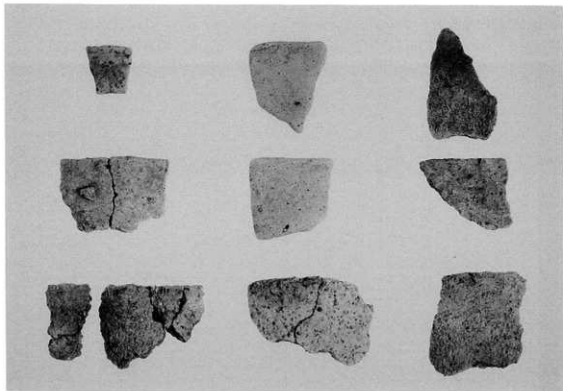
5041-O X出土製塩土器(内面)



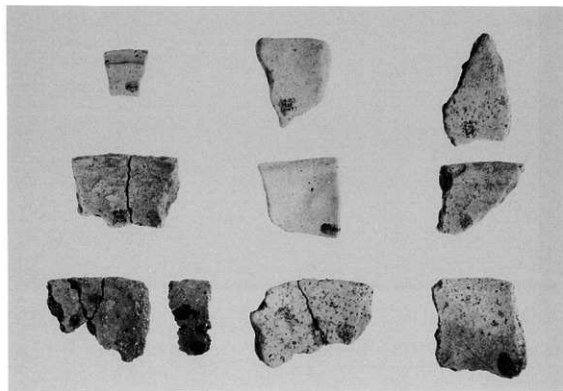
3034—OS出土製塩土器(外面)



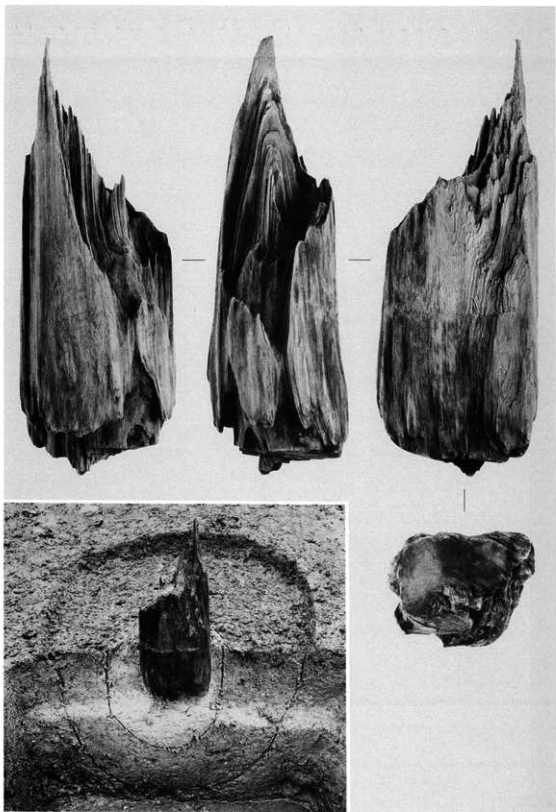
3034—OS出土製塩土器(内面)



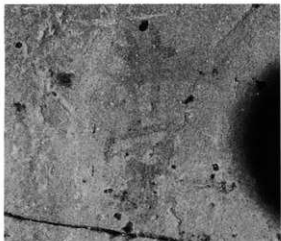
2022-00出土製塩土器(外面)



2022-00出土製塩土器(内面)



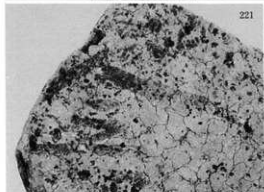
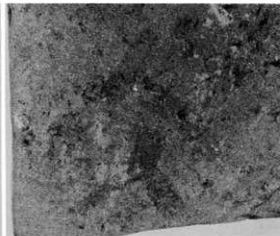
上：6141-OP 出土柱根 左下：6141-OP 柱根出土状態



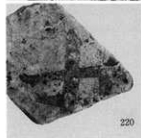
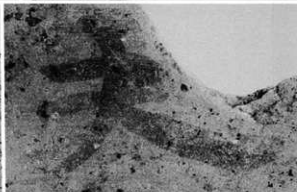
219



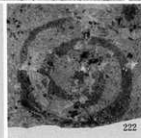
218



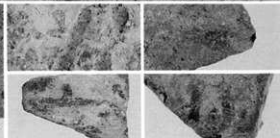
221

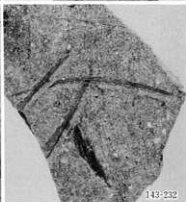
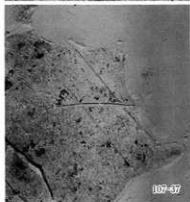
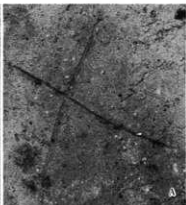


220



222





A : 3034-OS, JV,
須恵器坏底部外面



105-8



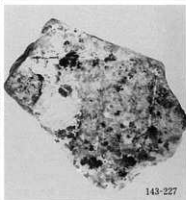
168-12



143-228



143-226



143-227



143-229



143-231



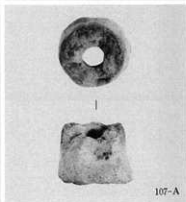
143-230



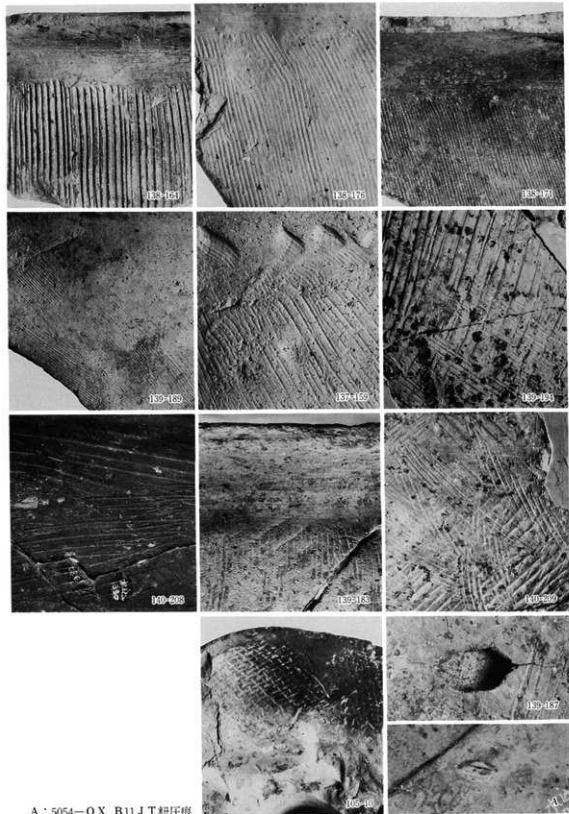
89-1



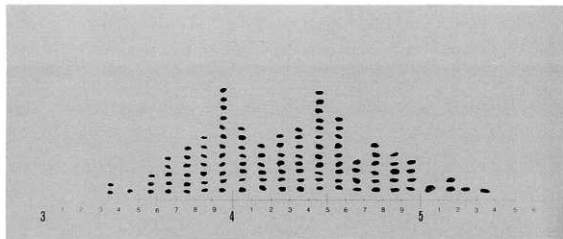
116-C



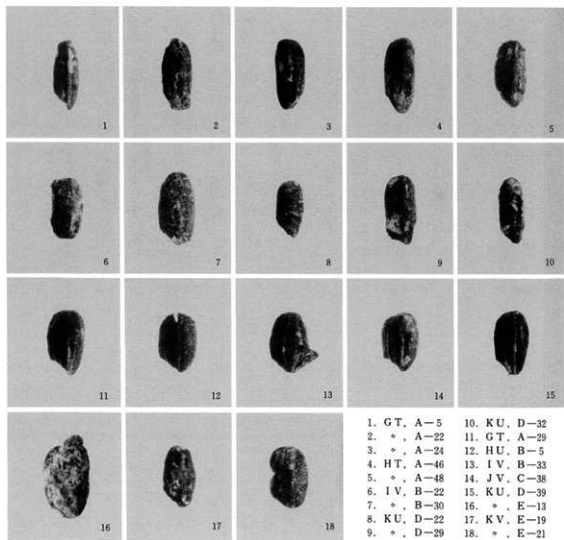
107-A



A : 5054—O X B11 J T 粗圧痕

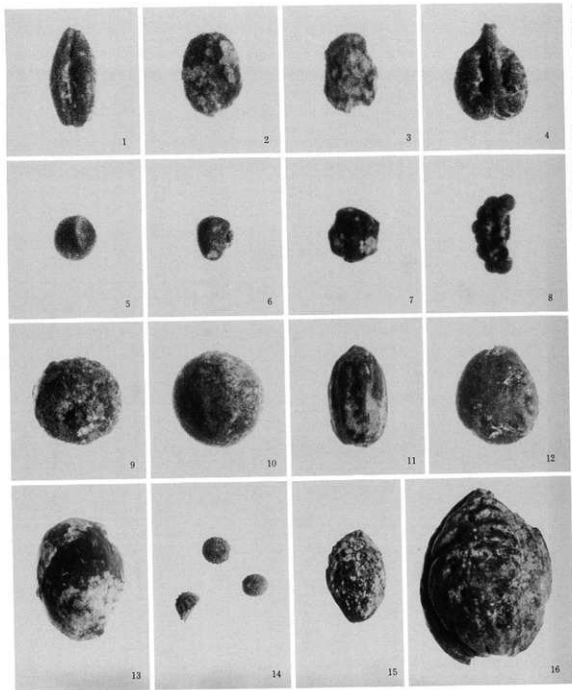


5041-OX出土炭化米ヒストグラム (1目盛0.1mm)



- | | |
|-------------|--------------|
| 1. GT, A-5 | 10. KU, D-32 |
| 2. *, A-22 | 11. GT, A-29 |
| 3. *, A-24 | 12. HU, B-5 |
| 4. HT, A-46 | 13. IV, B-33 |
| 5. *, A-48 | 14. JV, C-38 |
| 6. IV, B-22 | 15. KU, D-39 |
| 7. *, B-30 | 16. *, E-13 |
| 8. KU, D-22 | 17. KV, E-19 |
| 9. *, D-29 | 18. *, E-21 |

5041-OX出土炭化米 (4倍)



1. オオムギ, B-13, (×5)
 2. 虫コブ, 54-20, (×5)
 3. 不明, 54-30, (×5)
 4. ブドウ, F-15, (×5)
 5. イチイガシ? 幼葉, F-47, (×5)
 6. 不明, 54-7, (×5)
 7. 不明, 54-24, (×5)
 8. 不明, 54-52, (×5)
 9. 不明, JT, F-5, (×5)
 10. クスノキの種子, KV, F-48, (×4)
 11. イチイガシ?, LT, 54-46, (×3)
 12. スモモ, HU, 54-6, (×3)
 13. イチイガシ, KT, 54-36, (×3)
 14. アカメガシワ(2), ウドカズラ(1), 不明, 54-53, (×2)
 15. ウメ, JV, 54-22, (×2)
 16. モモ, KV, 54-43, (×2)

