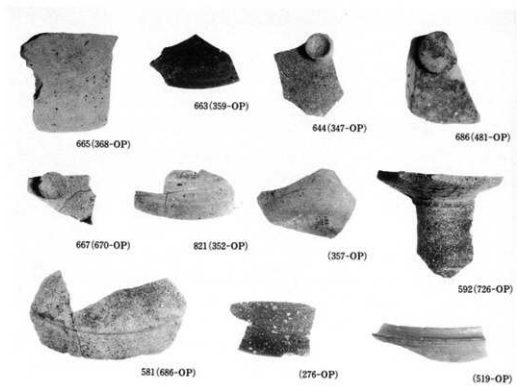
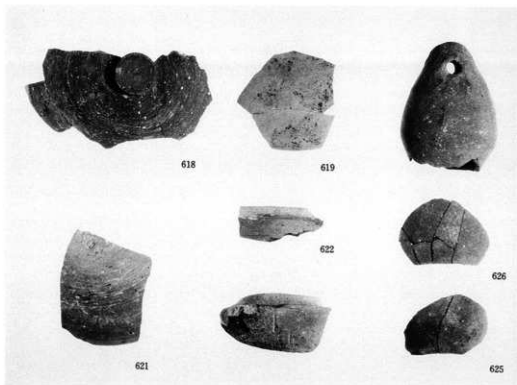


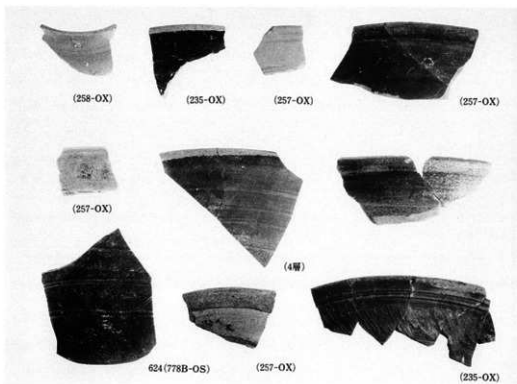
793-OD他出土遺物



368-OP他出土遺物



778B-O S 出土遺物



778B-O S 出土遺物





642



641



643



644



645



648



646



647



649



650



(3層)



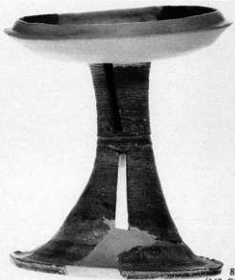
(795-OX)



813(800-OX)



(799-OX)



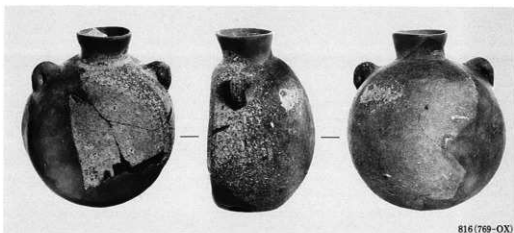
812
(148-OZ)



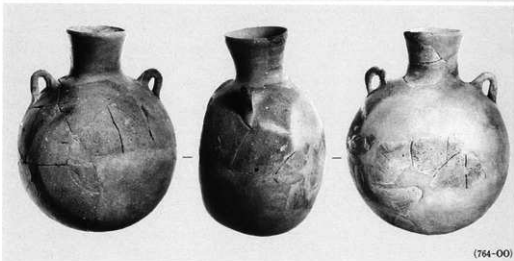
(749-OX)



(236-OX)



816(769-OX)



(764-OO)



817(795-OX)



818(196-OP)



(794-OX)



(794-OX)



658(790-OX)



(160-OZ)



(317B-OS)



819(180-d)



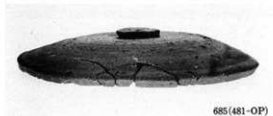
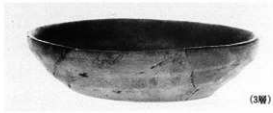
627(778-OS)



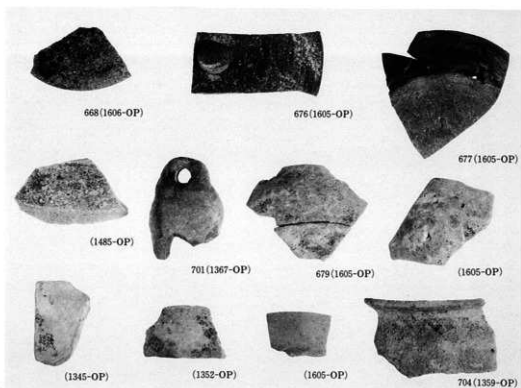
(160-176-OX)



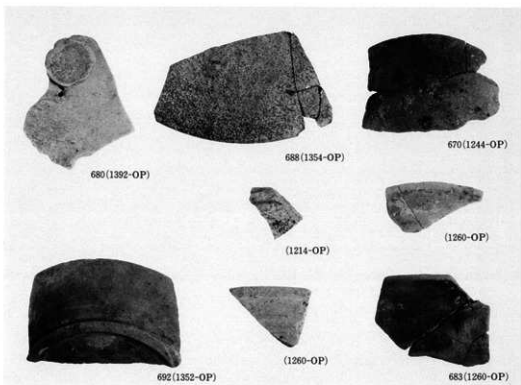
593(407-OP)







奈良～平安時代建物群他出土遺物





846(3層)



768(1469-OR)



749(1401-OX)



758(1395-OO)



(1401-OX)



763
(1395-OO)



764
(1395-OO)



681(943-OP)



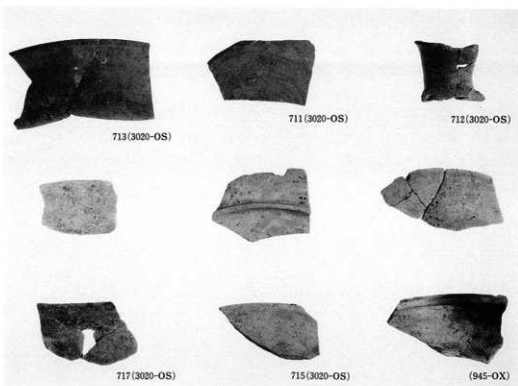
766(1395-OO)



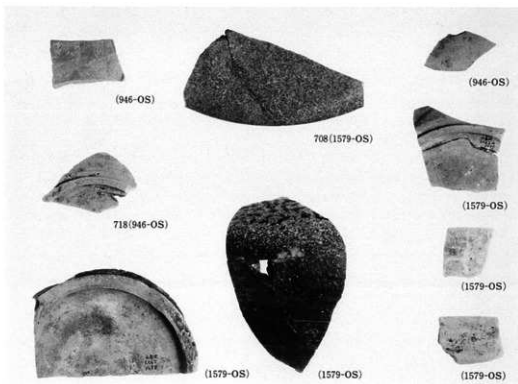
767(1395-OO)



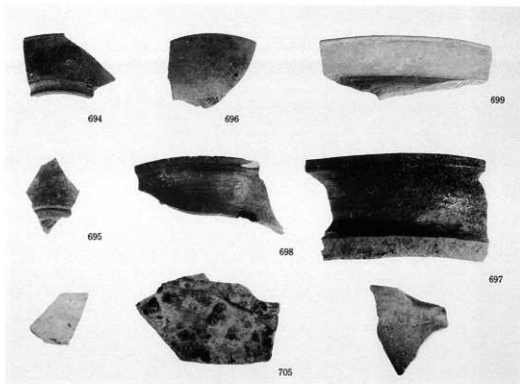
(4層)



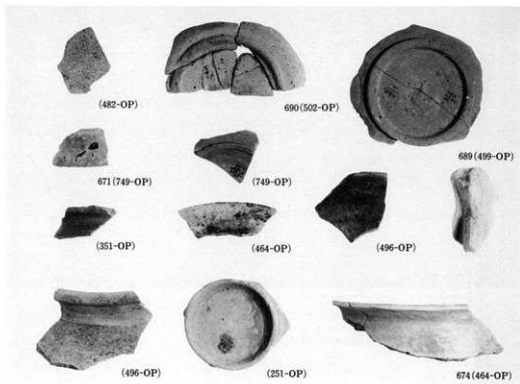
1579(3020) - OS 他出土遺物



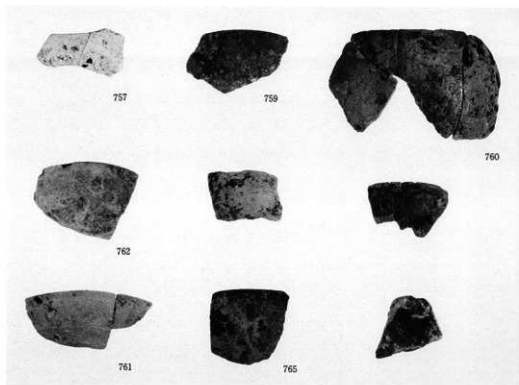
946-OS・1579-OS 出土遺物



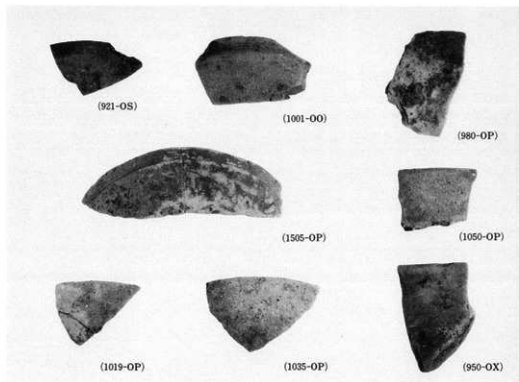
1050-OP 出土遺物



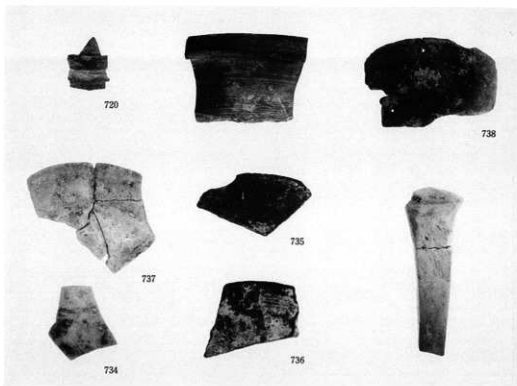
各ピット出土遺物



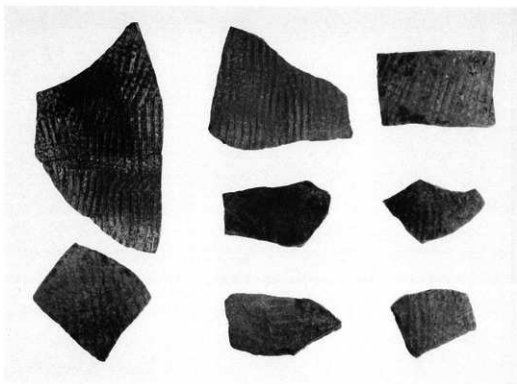
1395-00 出土遺物



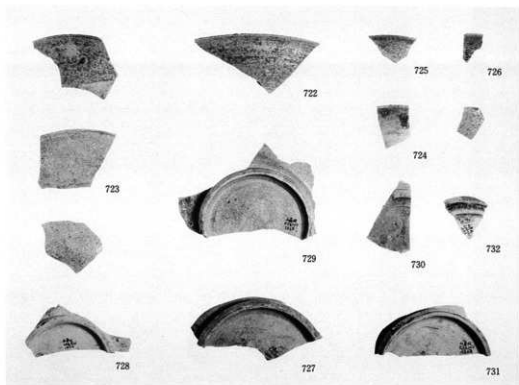
各ビット・土壇出土遺物



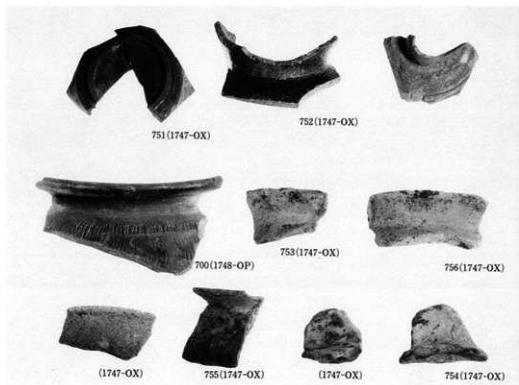
921-O S 出土遺物



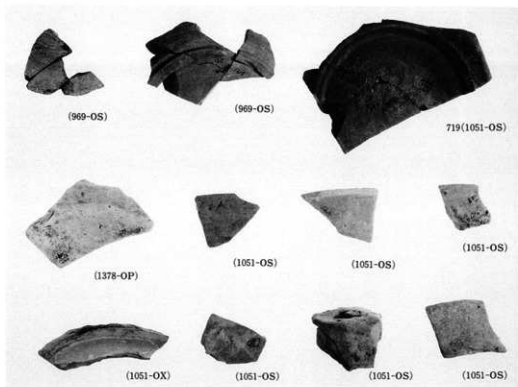
921-O S 出土遺物



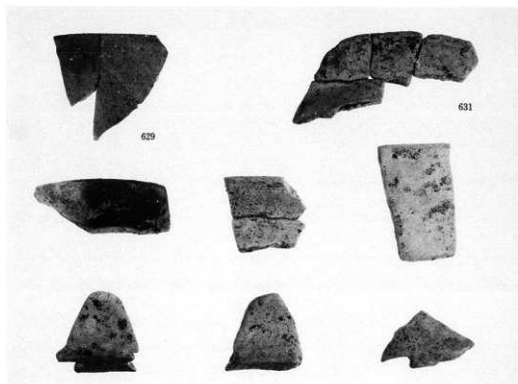
921-O S 出土遺物



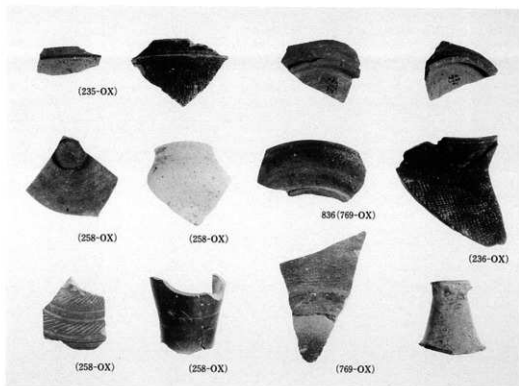
1747-O X他出土遺物



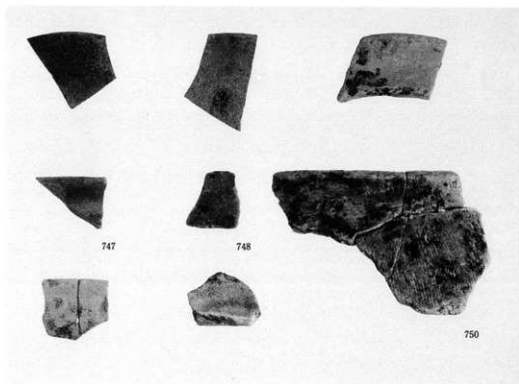
969-OS・1051-OS 出土遺物



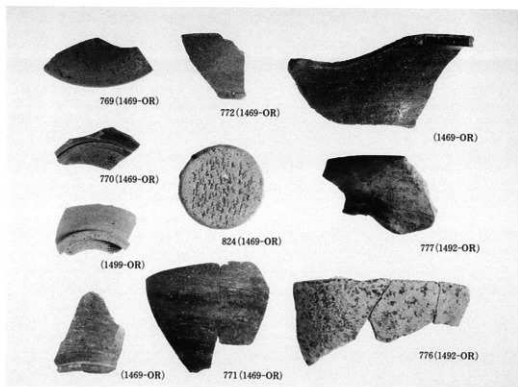
1610-OS 出土遺物



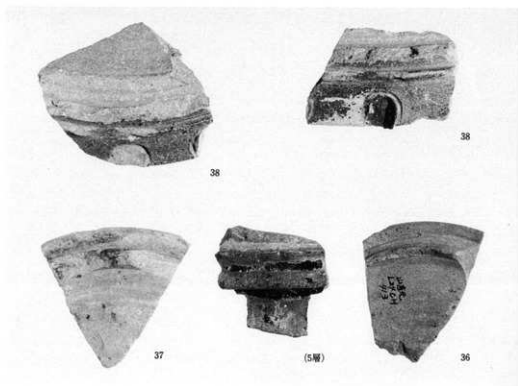
769-OX他出土遺物



1401-OX 出土遺物



1469-OR他出土遺物



包含層出土遺物

(財)大阪府埋蔵文化財協会報告書 第24輯

主要地方道岸和田・牛滝山・貝塚線建設に伴う

山ノ内遺跡B地区・山直北遺跡

—発掘調査報告書—

昭和63年3月31日発行

編集・発行 財団法人 大阪府埋蔵文化財協会
大阪市東区谷町2丁目36番地大手前ウツミビル

印刷 株式会社 中島弘文堂印刷所

