



包含層

654



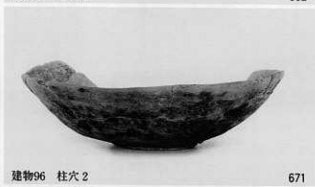
建物81 柱穴 4

662



建物84 柱穴 2

664



建物96 柱穴 2

671



墓 4

675



墓 4

677



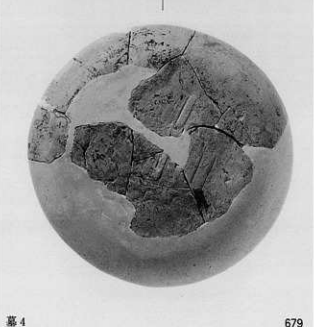
墓 3

674



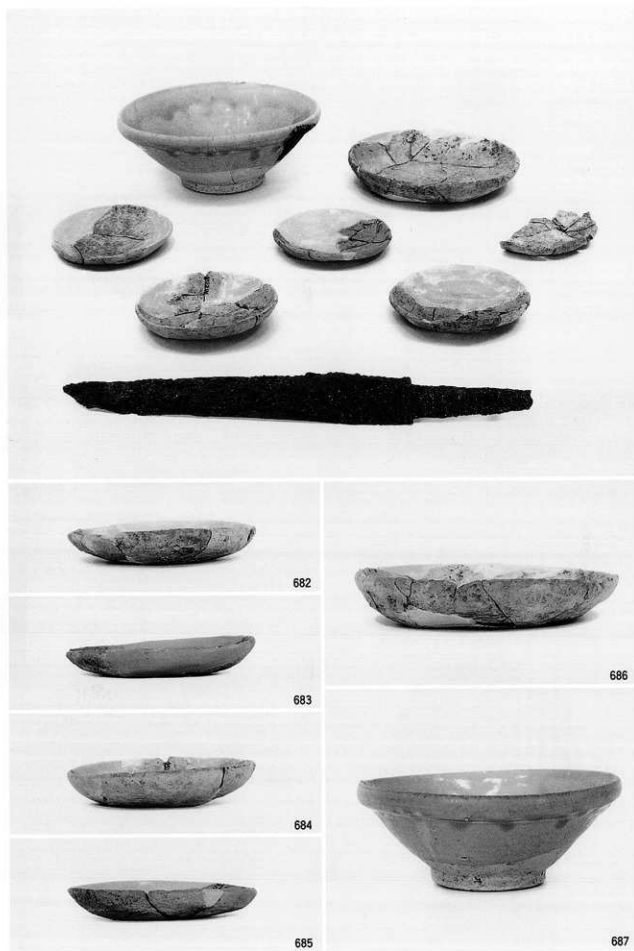
墓 3

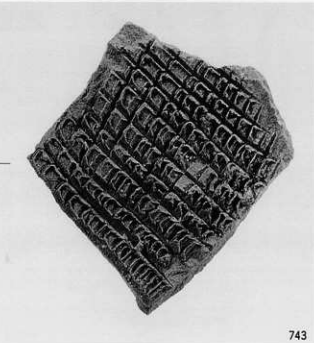
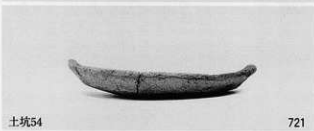
673



墓 4

679







土坑64

760



土坑64

763



土坑64

762



墓 8



墓 8

779



墓 8

786



墓 8

780



墓 8

782



墓 8

787



墓7



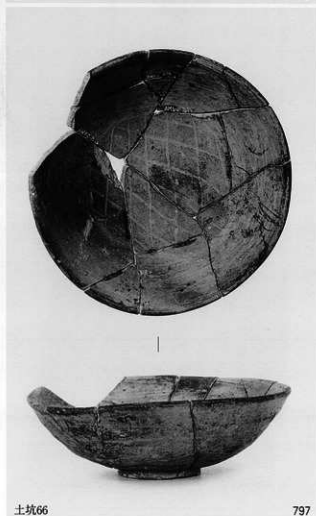
墓7



772

墓7

773



土坑66

797



土坑66

801





土坑66

1571



土坑66

1572



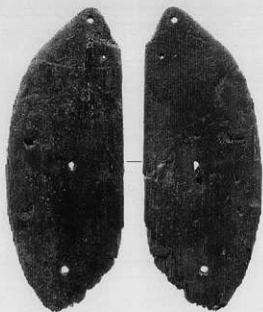
溝64

825



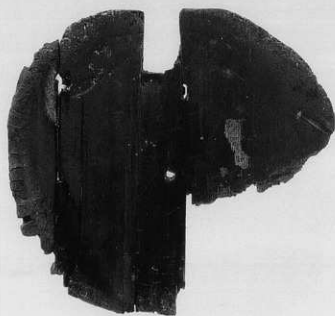
溝64

826



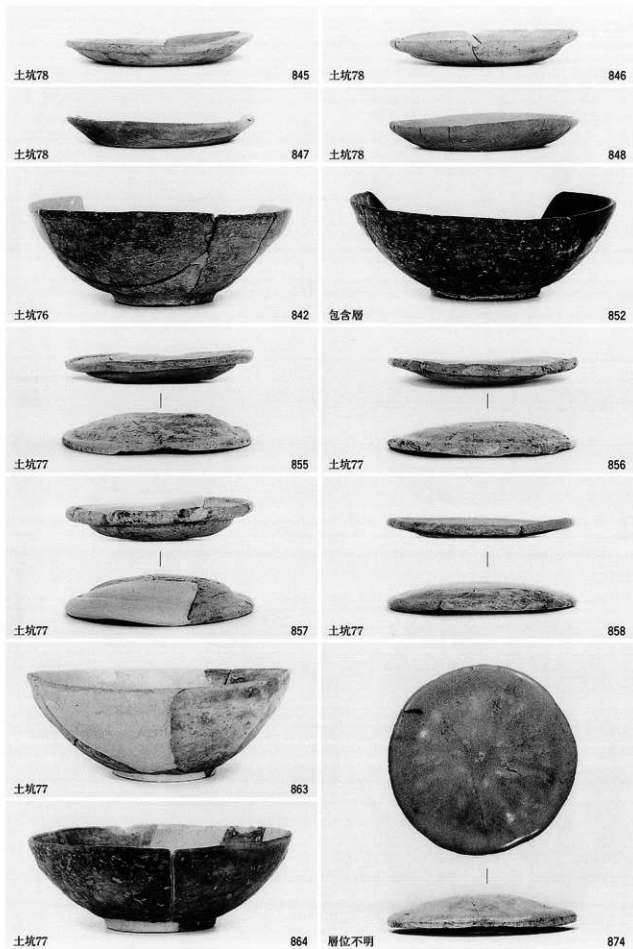
井戸7

832



井戸7

833





焼土坑47



焼土坑47

888



焼土坑47

889



焼土坑48

892



焼土坑47

890



焼土坑47

891



焼土坑48

893



焼土坑50

896



焼土坑50

897



焼土坑49

894



焼土坑49・50・土坑83

895



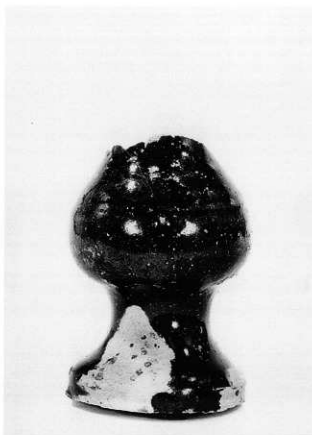
ビット70

1573



土坑89

913



土坑88カ

914



土坑88

915



東側壁片部



集石 5

919



集石 5

920



集石 5

921



中世包含層

1574



井戸 8

935



井戸 8

939



井戸 8

937



井戸 8

940



井戸 8

936



井戸 8

984



983



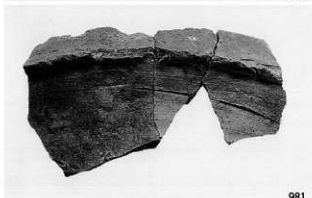
987



979



986



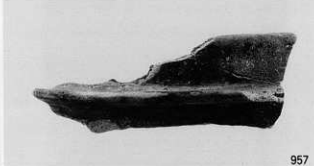
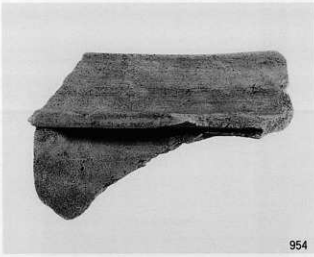
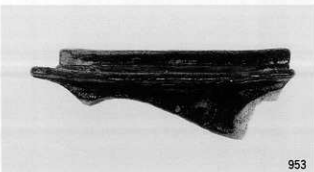
981



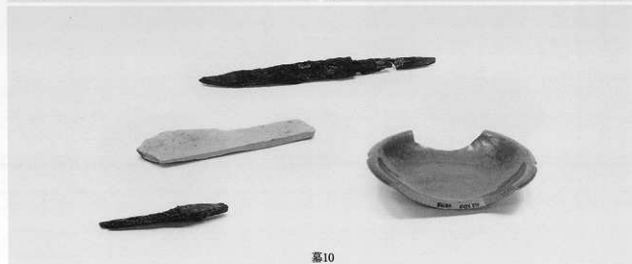
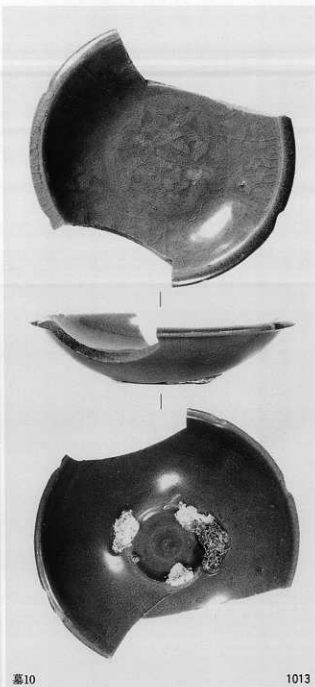
982



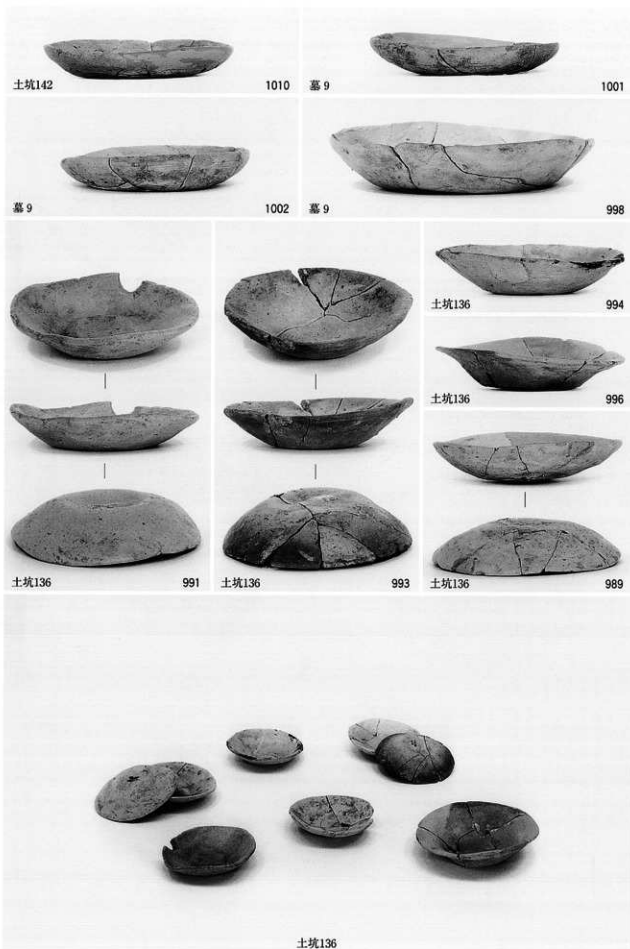
980

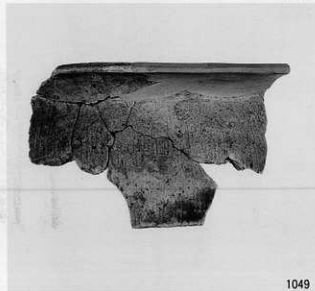
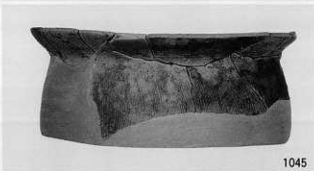
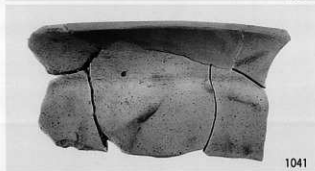


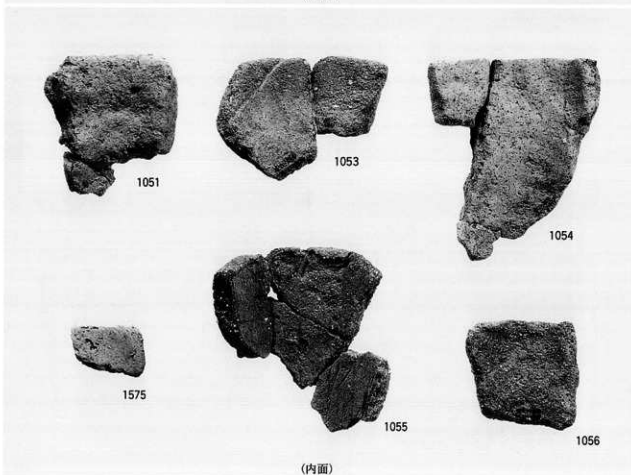
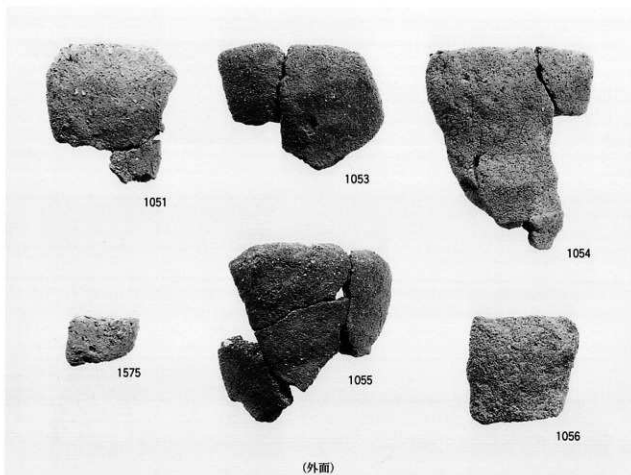




図版216 丘陵上東部出土遺物 (13) q 域 - 6









土坑96

1017



ピット74

1020



土坑96

1018



ピット78

1023



土坑96

1576



土坑119

1076



土坑119

1078



土坑120

1081



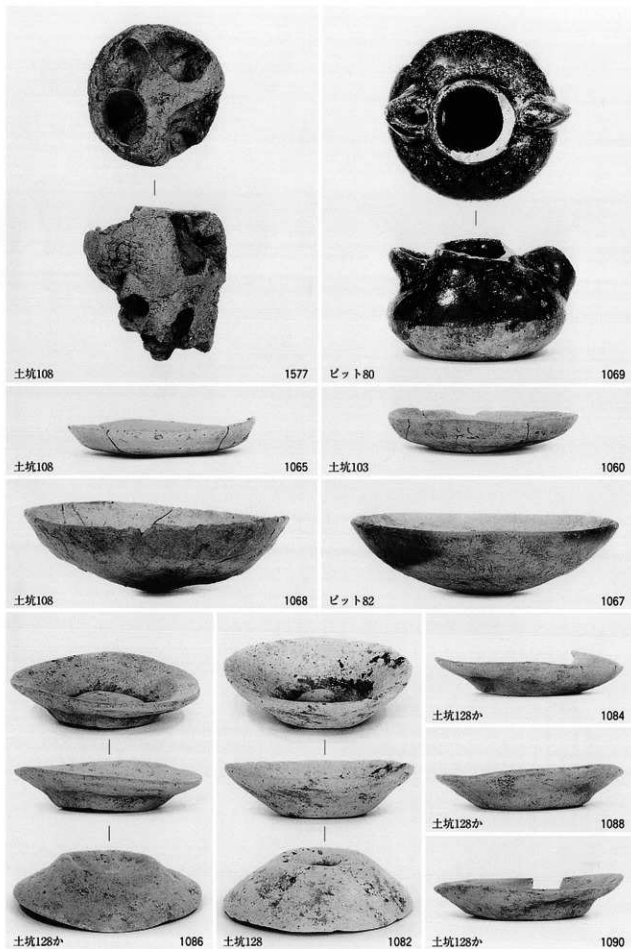
ピット84

1059



土坑134

1073





土坑135

1094



土坑135

1093



焼土坑56上層

1099



焼土坑57

1098



焼土坑57上層

1095



焼土坑57

1096



焼土坑57

1097



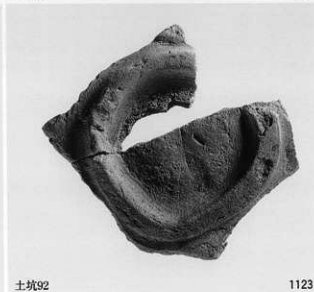
土坑93

1122



ピット87

1578



土坑92

1123



土坑95



1115 段丘崖層部集積

1164



土坑145

1119



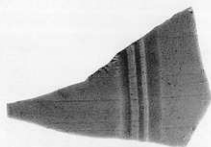
段丘崖層部集積

1174

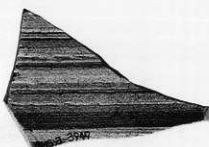


段丘崖層部集積

1145



段丘崖層部集積

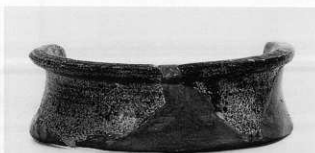


1579



段丘崖肩部集積

1168



段丘崖肩部集積

1170



段丘崖肩部集積

1580



段丘崖肩部集積

1169



包含層

1202



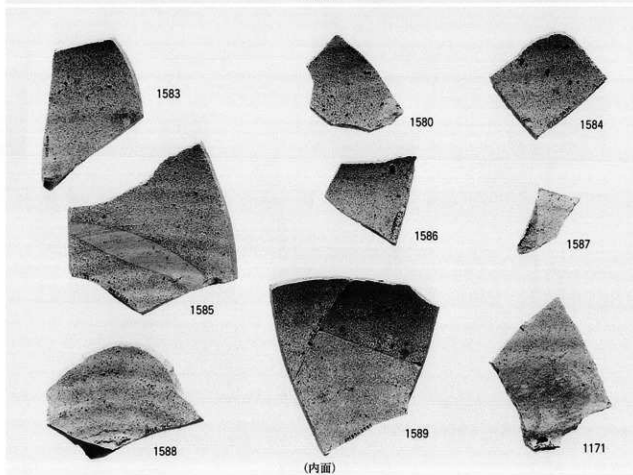
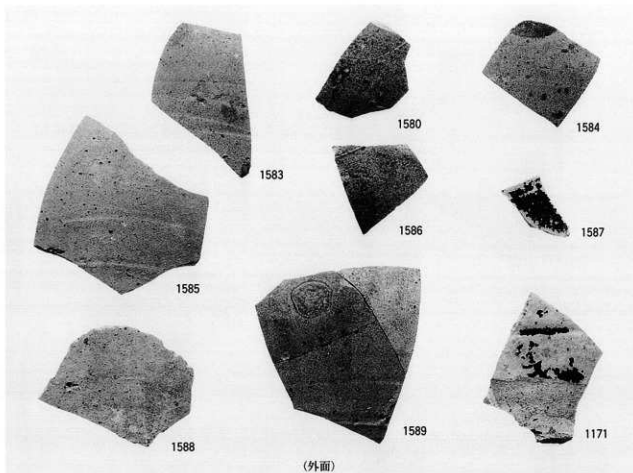
包含層

1581



包含層

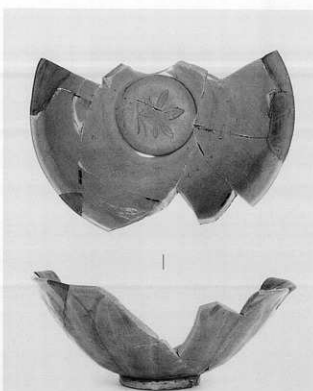
1582





包含層

1201



包含層

1200



包含層

1203



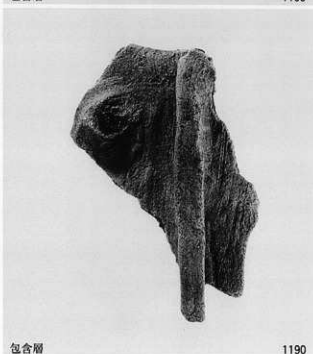
包含層

1195



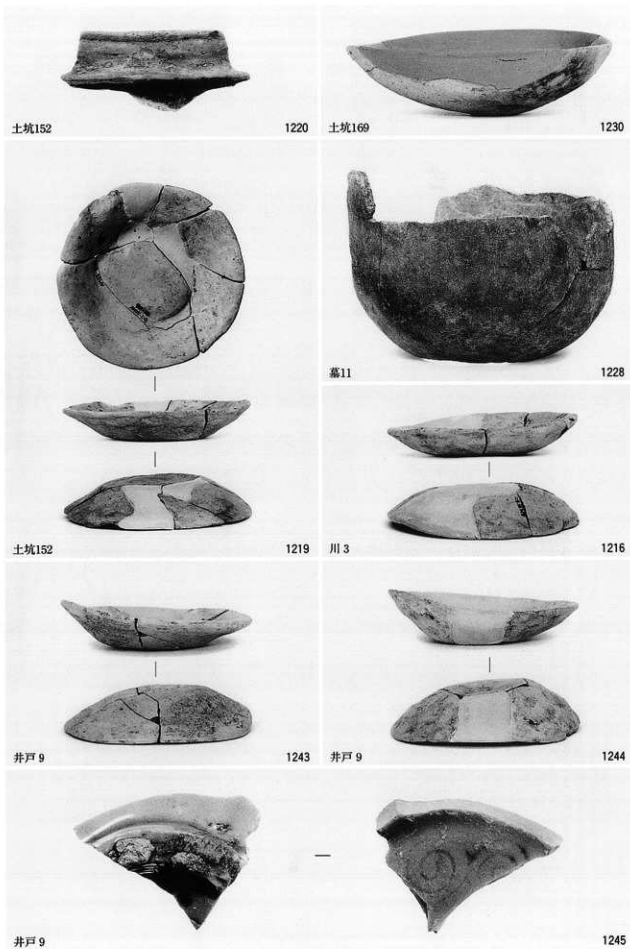
層位不明

1183



包含層

1190





井戸9

1239



井戸9

1242



井戸9

1241



井戸10

1247



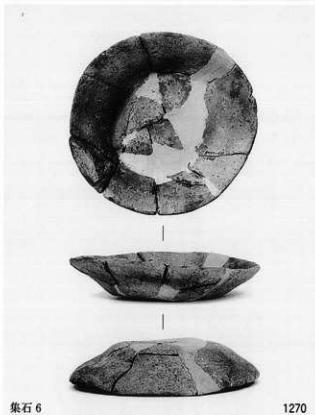
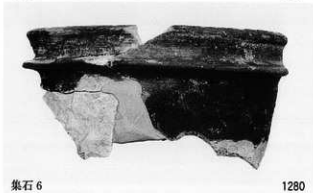
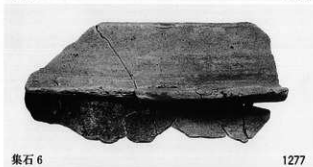
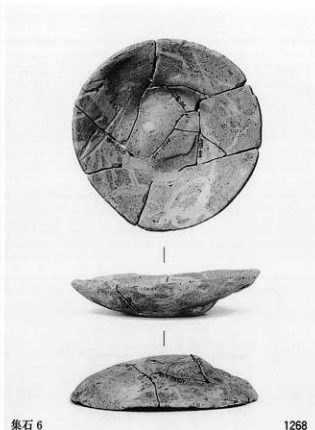
井戸9

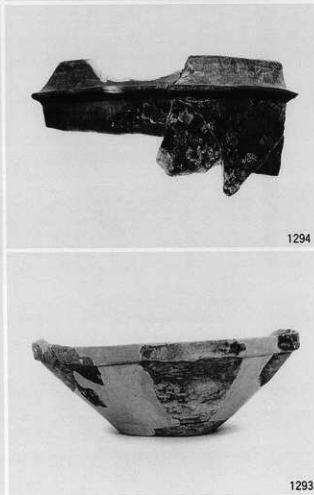
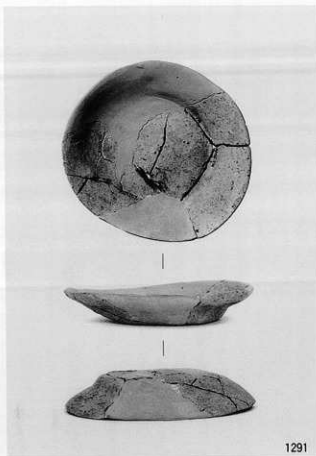
1240

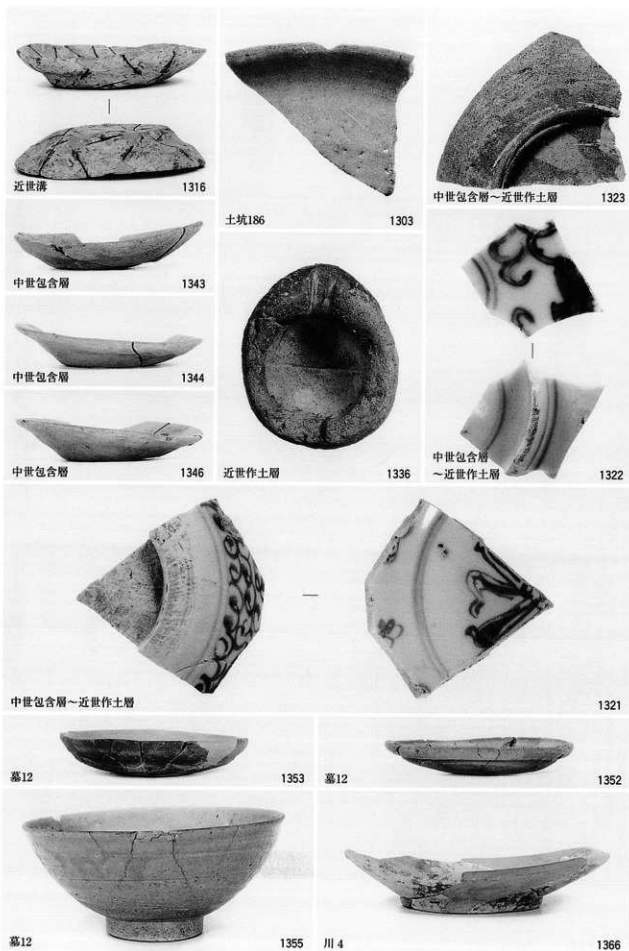


井戸10

1250

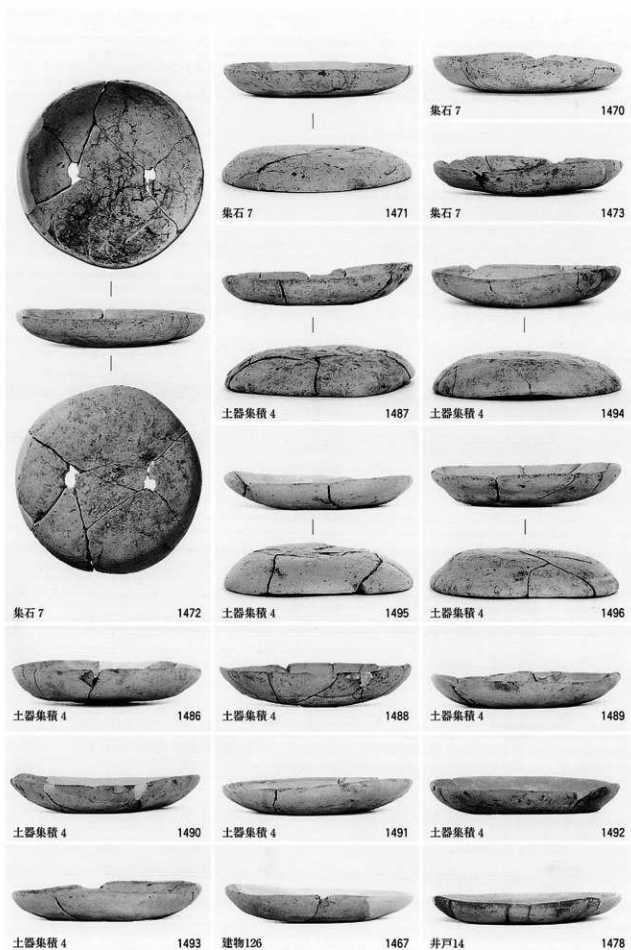


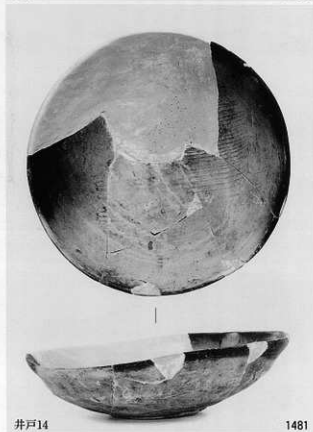
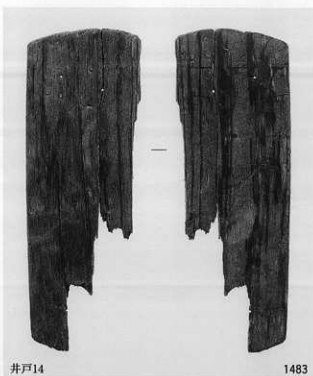




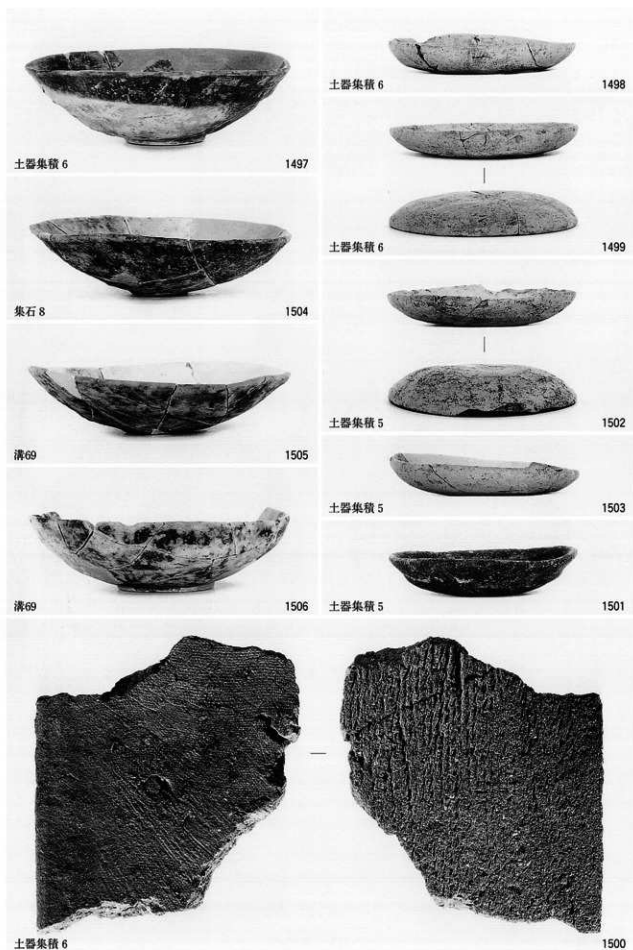


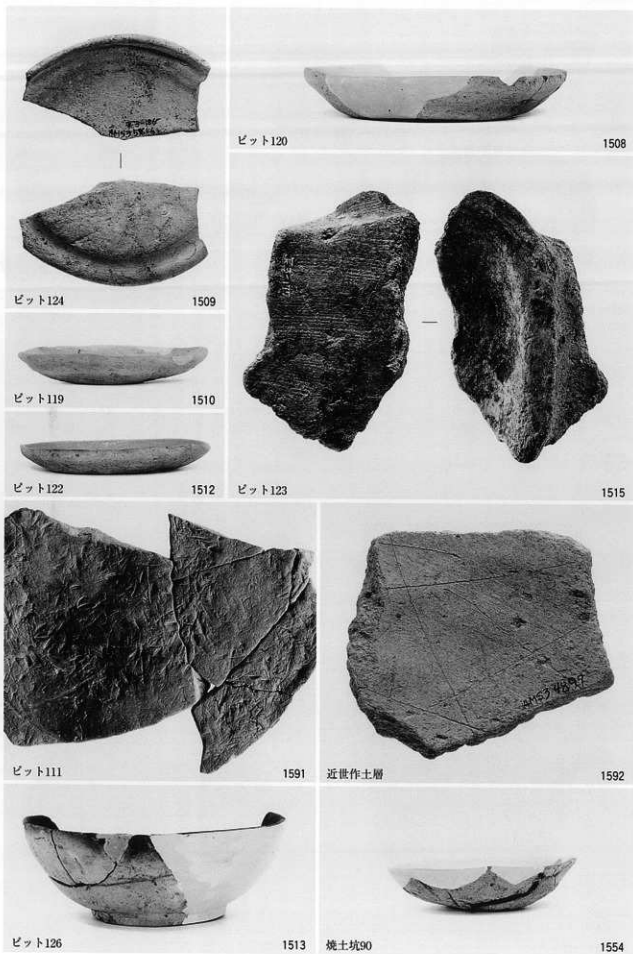
図版232 勝尾寺川段丘面出土遺物 (2) x 域 - 1





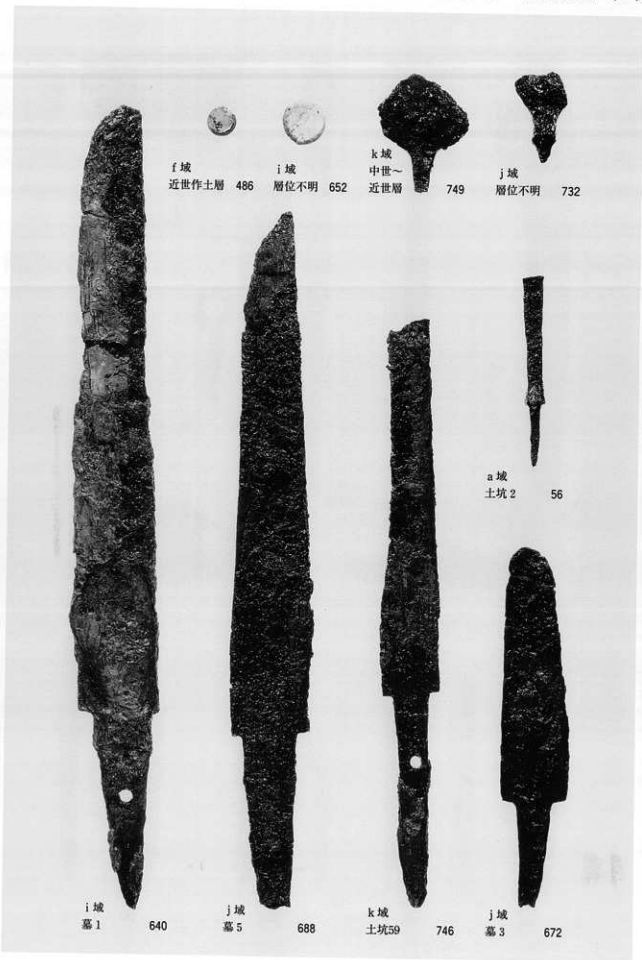
図版234 勝尾寺川段丘面出土遺物 (4) x 域 - 3





図版236 勝尾寺川段丘面出土遺物 (6) y 域 - 2

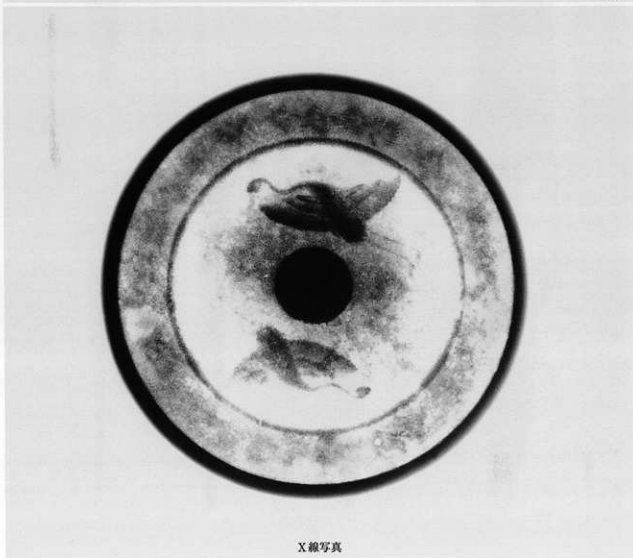






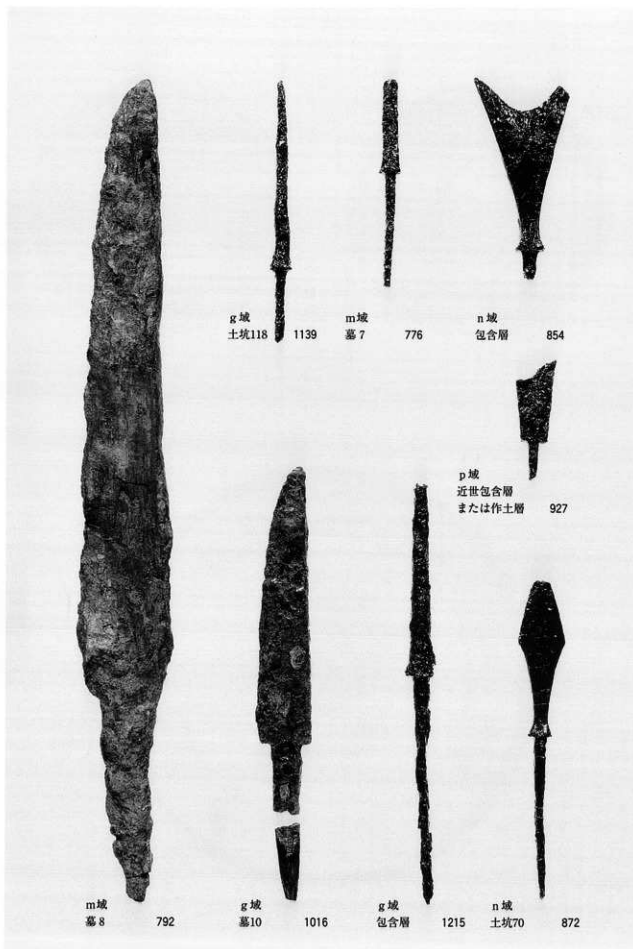


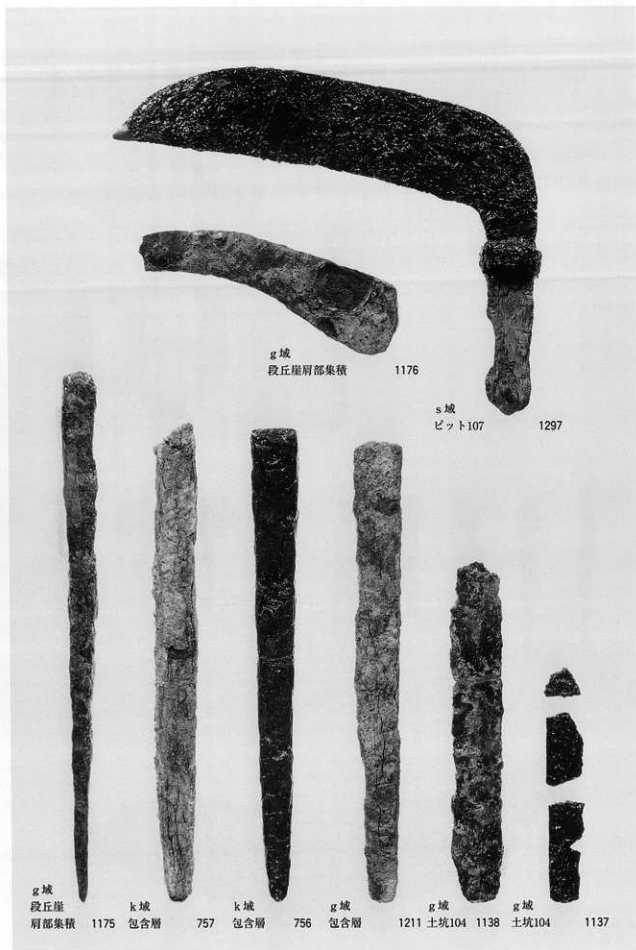
680

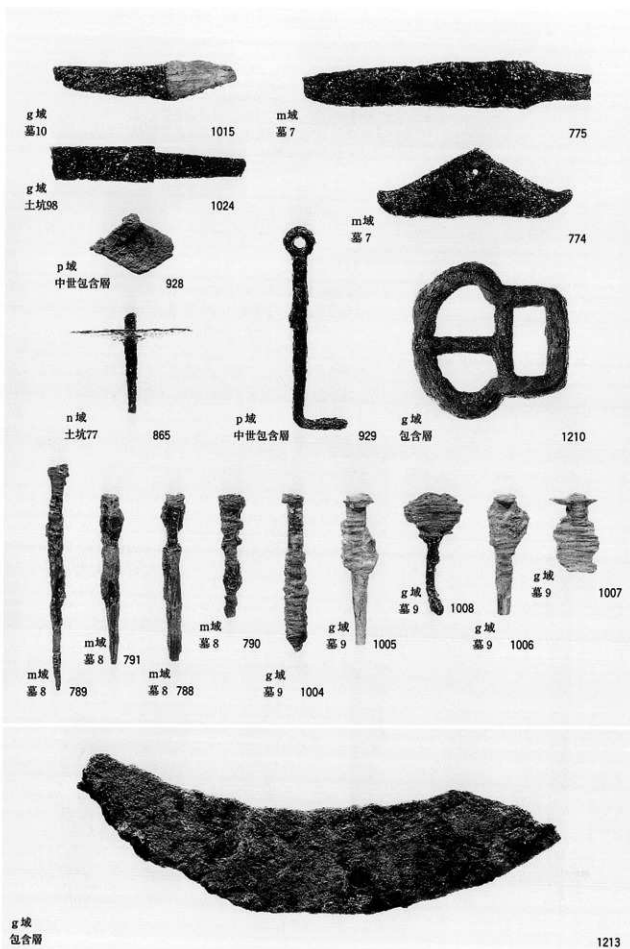


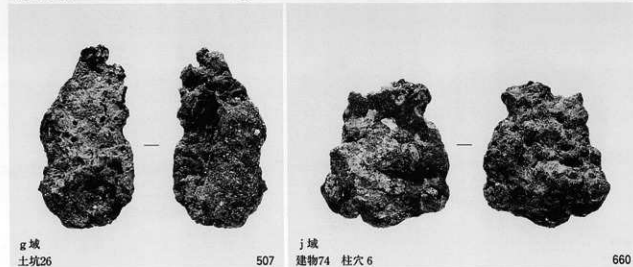
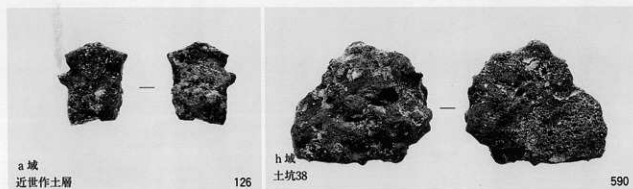
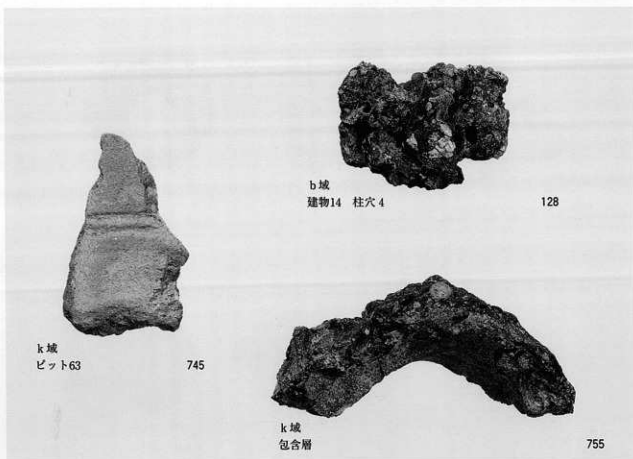
X線写真

j域 墓4

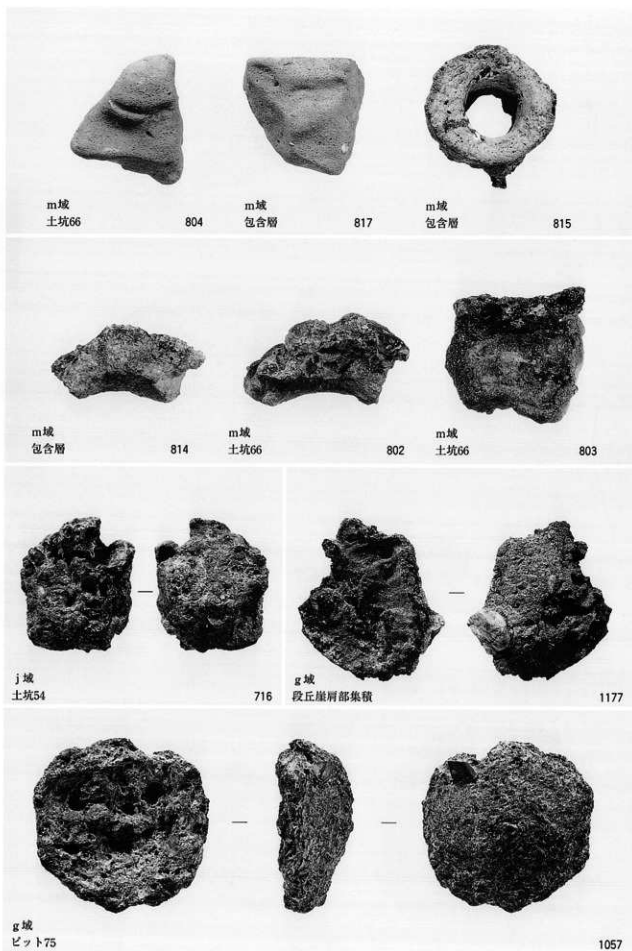








図版244 金属製品生産関連遺物（2）





m城
土坑66

813



m城
土坑66

812



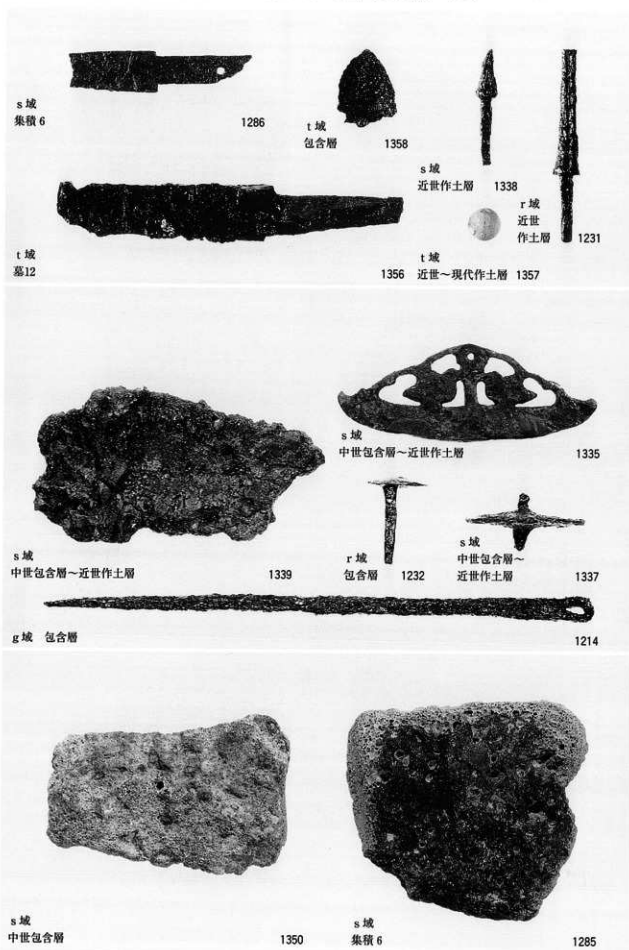
m城
土坑66

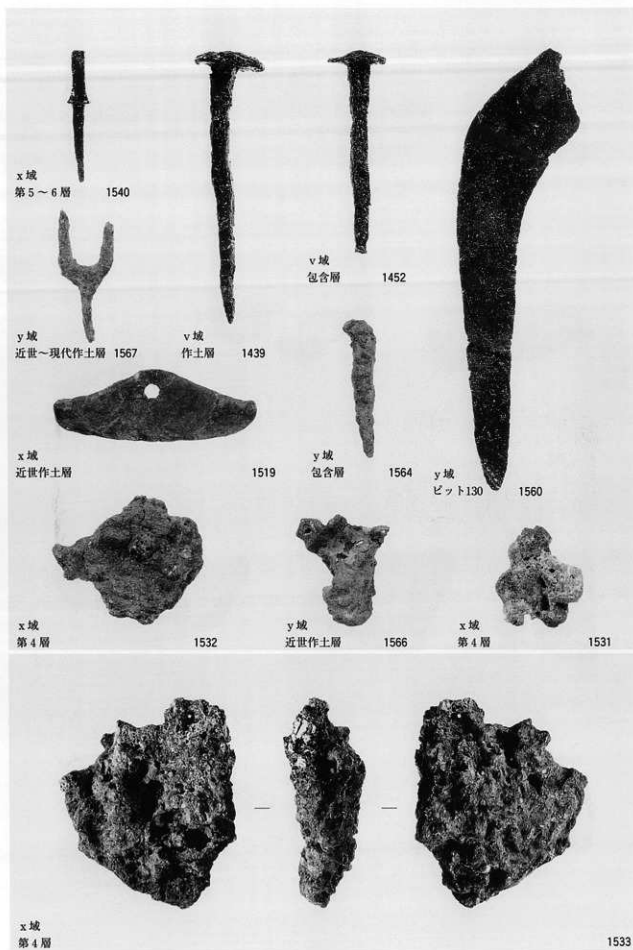


811



m城 土坑66





図版248 石製品 (1)



k 城
近世作土層

747



b 城
近世作土層

247



j 城
土坑52

710



g 城
包含層

1184



x 城
第5層

1528

h 城
包含層

596

(外面)



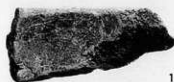
747



247



710



1184

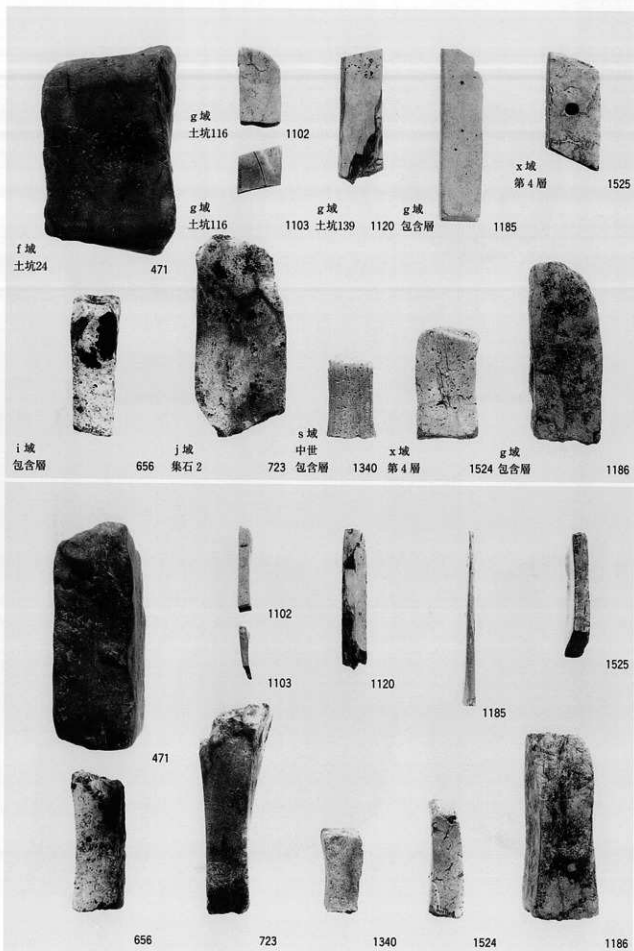


1528

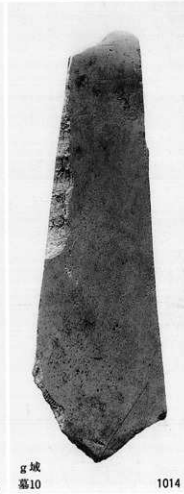
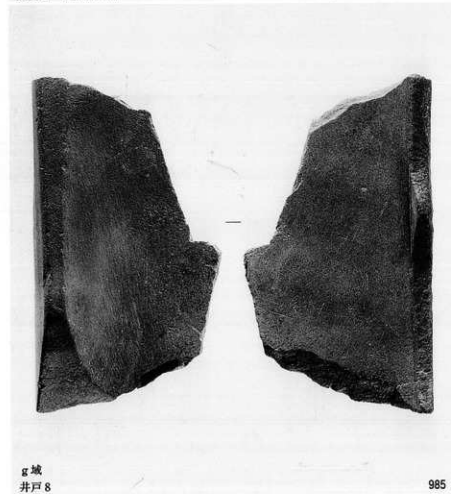
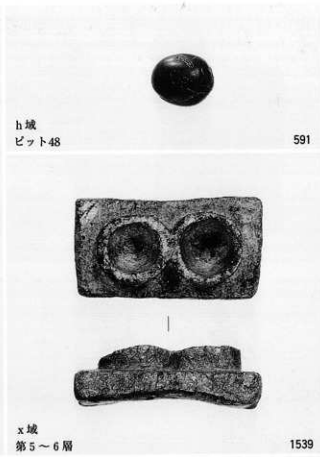


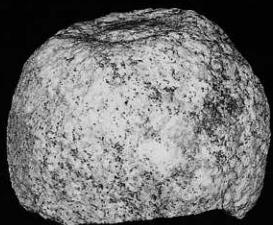
596

(内面)



図版250 石製品 (3)





k域
井戸6

742



x域
近現代盛土層

1516

(財)大阪府文化財センター発掘調査報告書 第85集

粟生間谷遺跡

古代・中世編

写 真 図 版 編

—国際文化公園都市特定土地区画整理事業に伴う

古代から中世の集落の調査—

2003年2月 発行

編集発行／財団法人 大阪府文化財センター

〒590-0105 堺市竹城台3丁目21番4号 Tel 072-299-8791

印刷／株式会社 中島弘文堂印刷所

〒537-0002 大阪市東成区深江南2丁目6番8号
