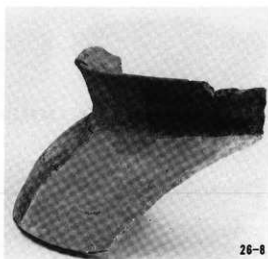
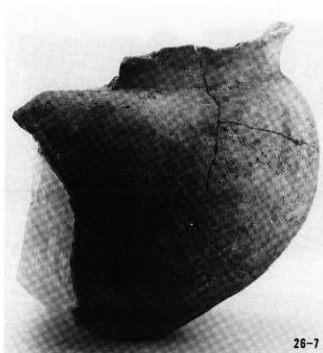
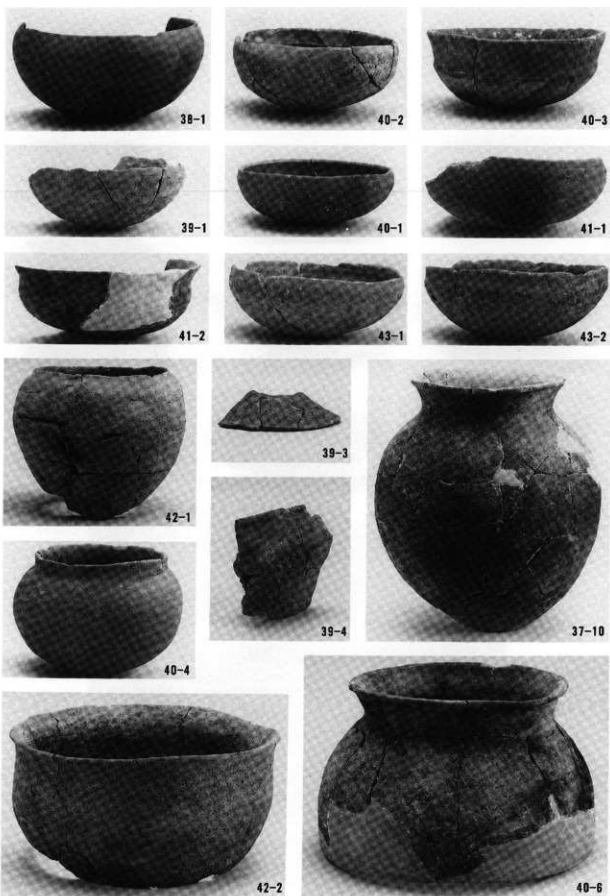


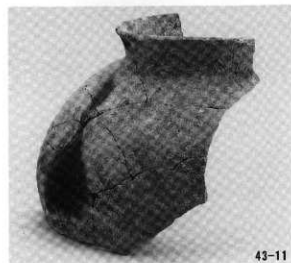
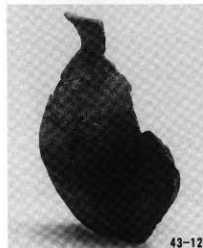
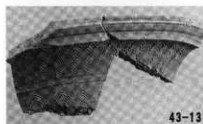


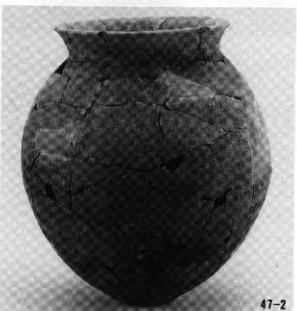
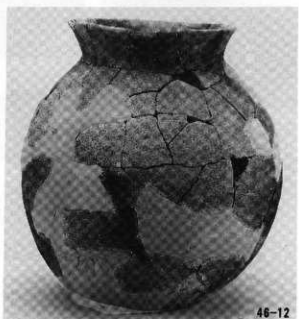
第19・20・21・22・26号住居跡，第1号竖穴遺構出土遺物



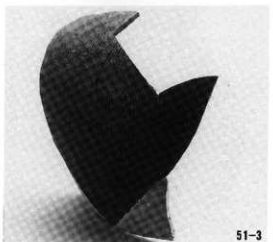
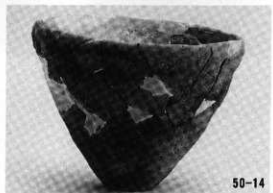


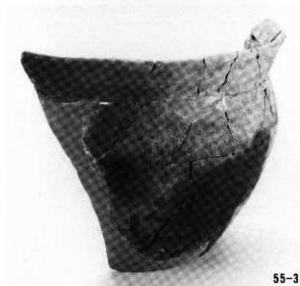


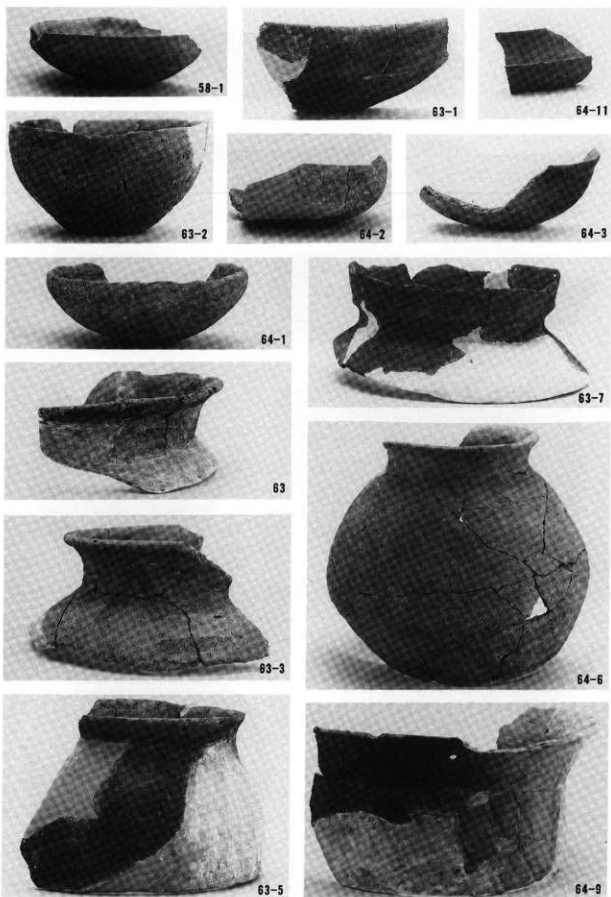












第58・63・64号住居跡出土遺物



29-1



29-2



52-6



52-5



62-11



52-14



52-4



52-13



52-15



29-5



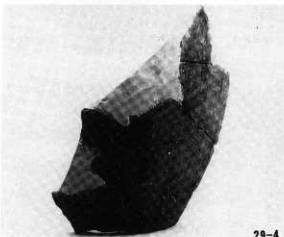
59-1



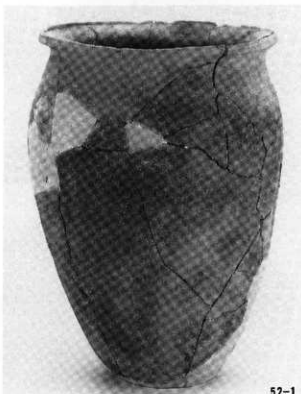
52-16



50-12



29-4



52-1



64-5



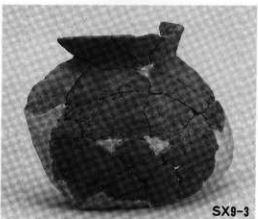
64-10



SX9-4



64-8



SX9-3



SX9-2



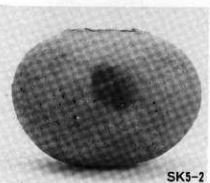
SK3-1



SX5-3



SK24-1



SK5-2



SK26-1



遺構外



SK28-2



SK28-3



SK28-5



SK86-10



遺構外



SK44-1



SK26-2



SK46-6



SK71-8



SK34-1

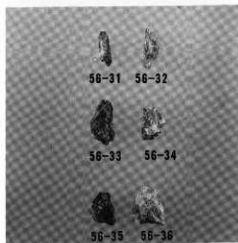
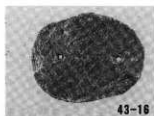


SK76-1

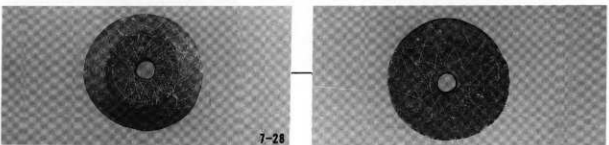
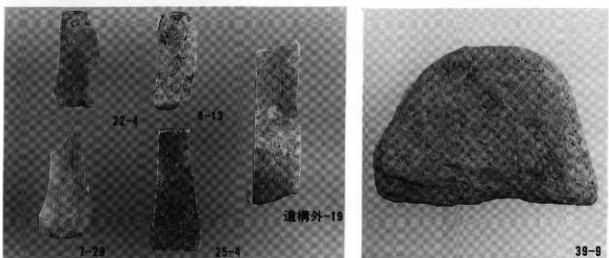
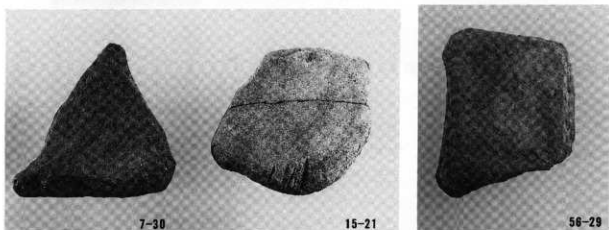
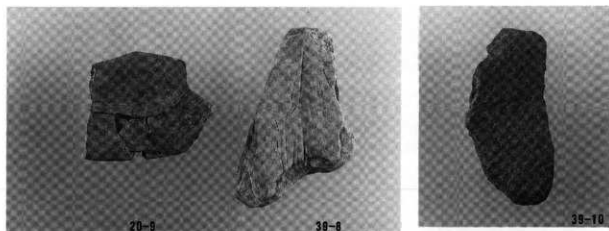


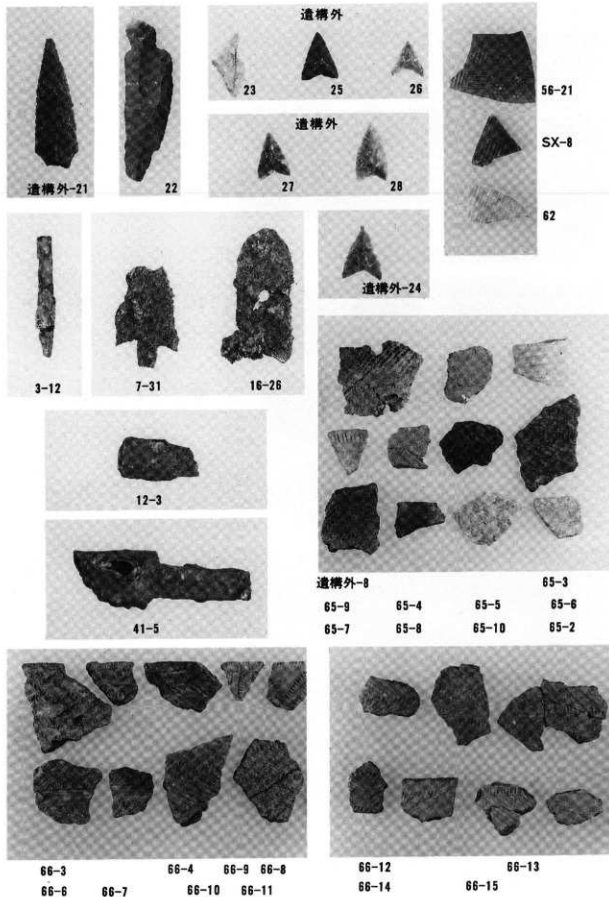


第3・21・59号住居跡，第76・78・95号土坑，炭焼窯跡，遺構外出土遺物



第1・10・16・28・43・46・48・56号住居跡，第1号竖穴遺構出土遺物





第 3・7・12・16・41・56・62・65・66・8 号竖穴遺構・遺構外出土遺物



39 54 52

51 1 38

2 3 21 50



15 31 28 14

19 4 11 10

24 13

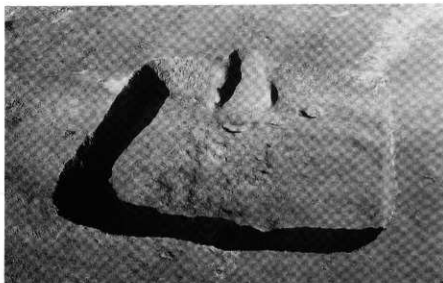


34 37 22 47

36 27

35 23 25

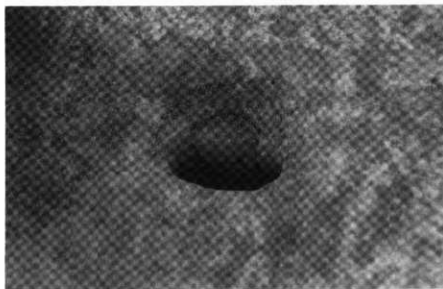
15 17 32 18



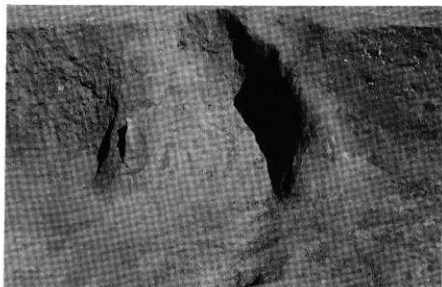
第1号住居跡完掘



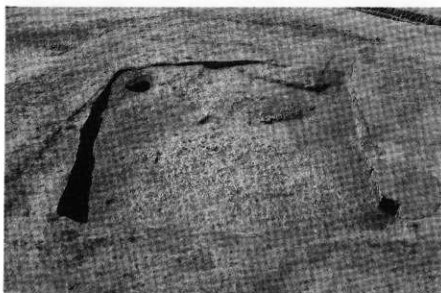
第1号住居跡
遺物出土状況



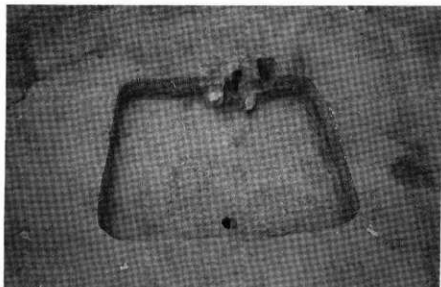
第1号住居跡
出入口ピット



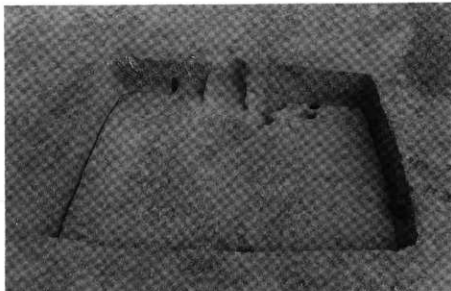
第1号住居跡完掘



第2号住居跡完掘



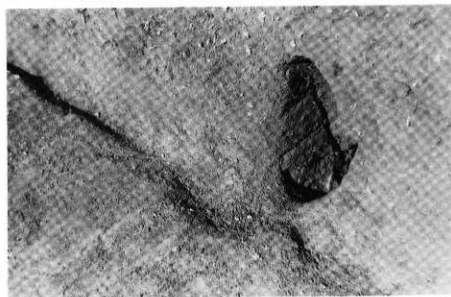
第3号住居跡完掘



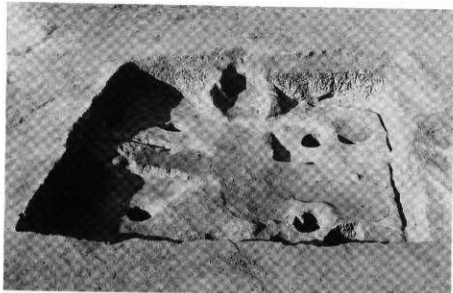
第4号住居跡完掘



第4号住居跡竈
遺物出土状況



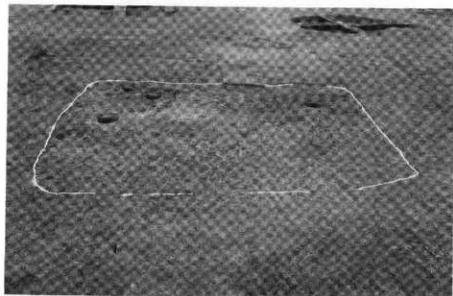
第4号住居跡
壁柱穴



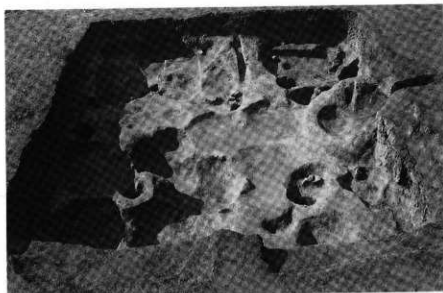
第5号住居跡完掘



第5号住居跡遺物出土状況



第6号住居跡完掘



粘土探掘土坑群



粘土探掘土坑
遺物出土狀況



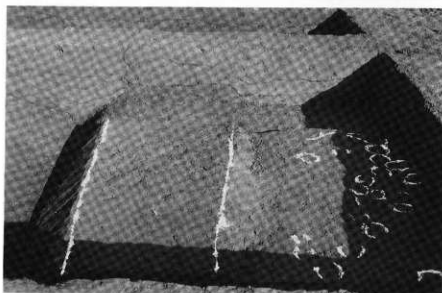
第1号溝完掘



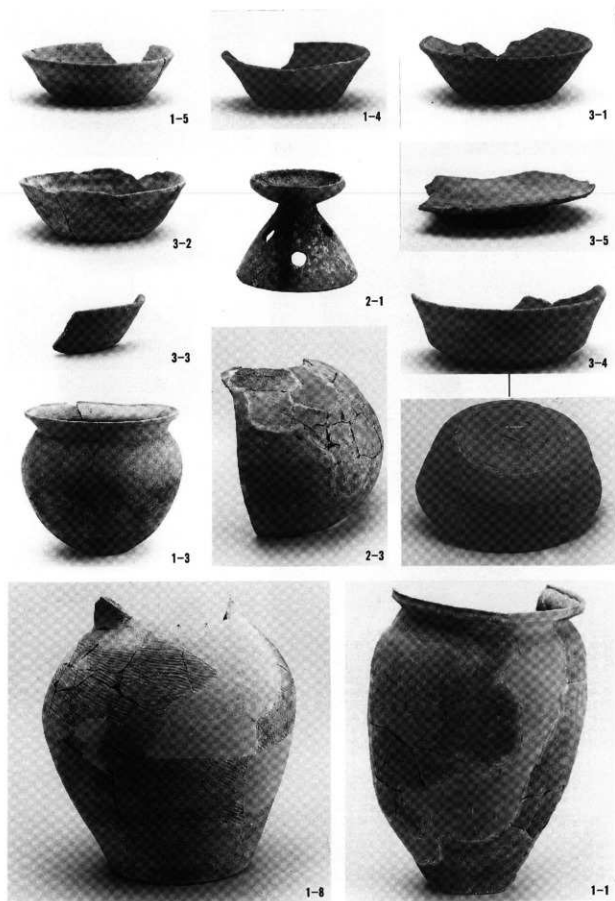
第2号溝完掘



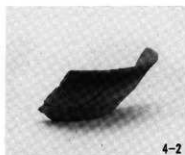
水田跡

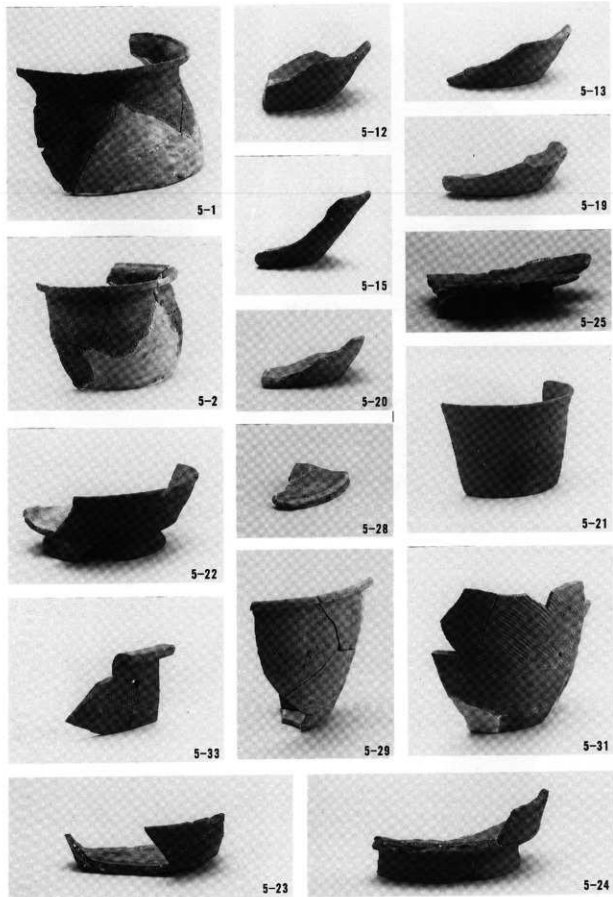


水田跡

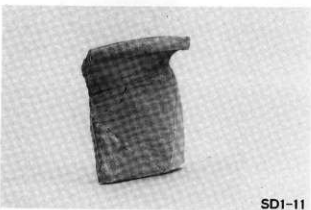
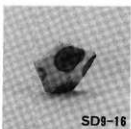
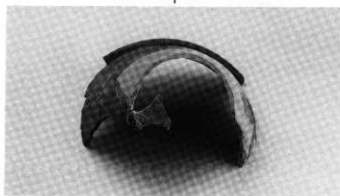
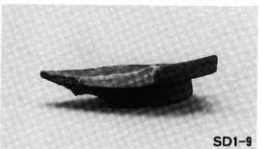
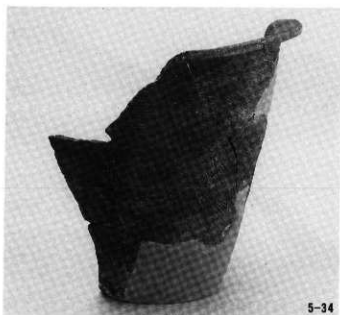


第1・2・3号住居跡出土遺物

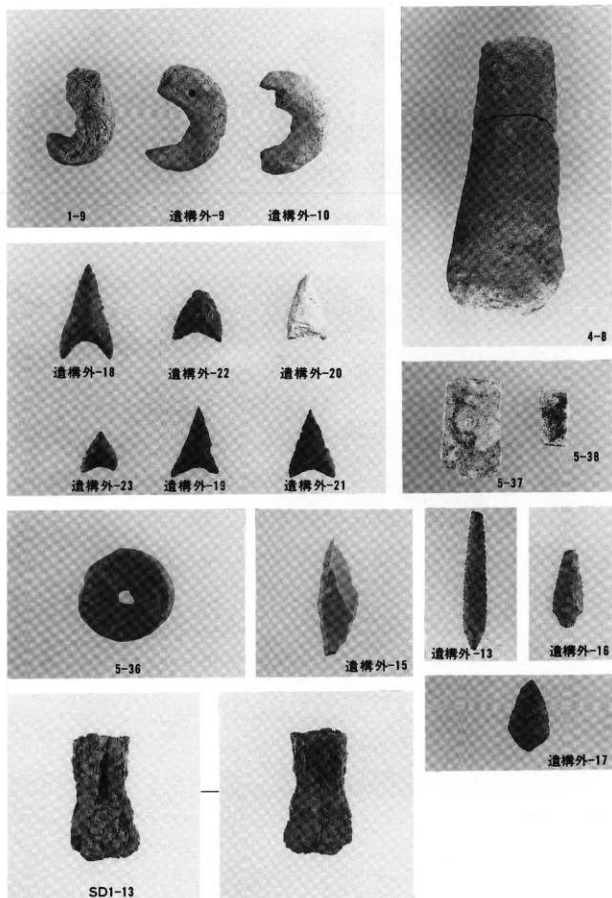




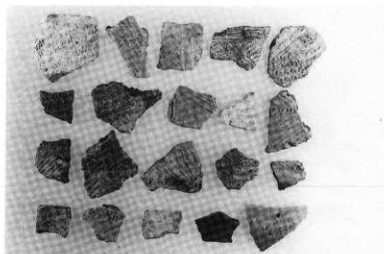
第5号住居跡出土遺物



第5・6号住居跡，第1・9号溝出土遺物



第1・4・5号住居跡，第1号溝，遺構外出土遺物



73 5 13 49
 50 35 72 1 36
 25 37 38 29 14
 31

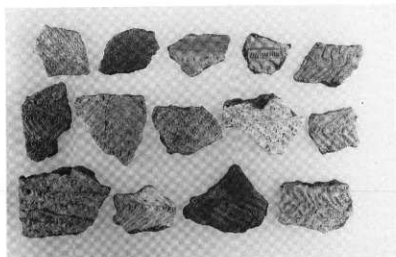


77
 39 32 7 8
 48 15 52 40 4



11 12 3
 17 18 19 16 20
 21 23 57 22 24

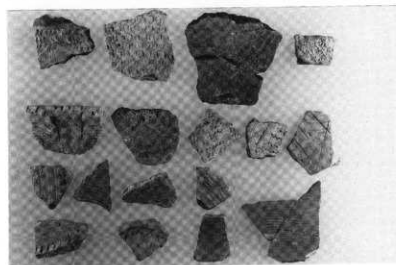
遺構外出土遺物



58 59 33 28 34

42 43 41 44 47

51 45 46 55

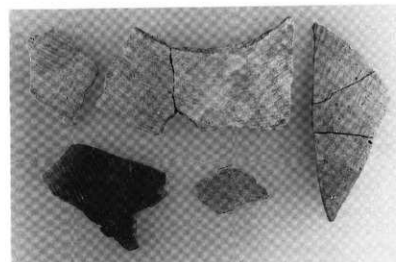


53 54 60 61

63 64 65 66 67

68 70 69 71

74 75 76



10 7 8

9

遺構外出土遺物

茨城県教育財団文化財調査報告第106集

牛久北部特定土地区画整理事業
地内埋蔵文化財調査報告書(Ⅳ)

馬場遺跡
行人田遺跡

平成8(1996)年3月24日 印刷

平成8(1996)年3月31日 発行

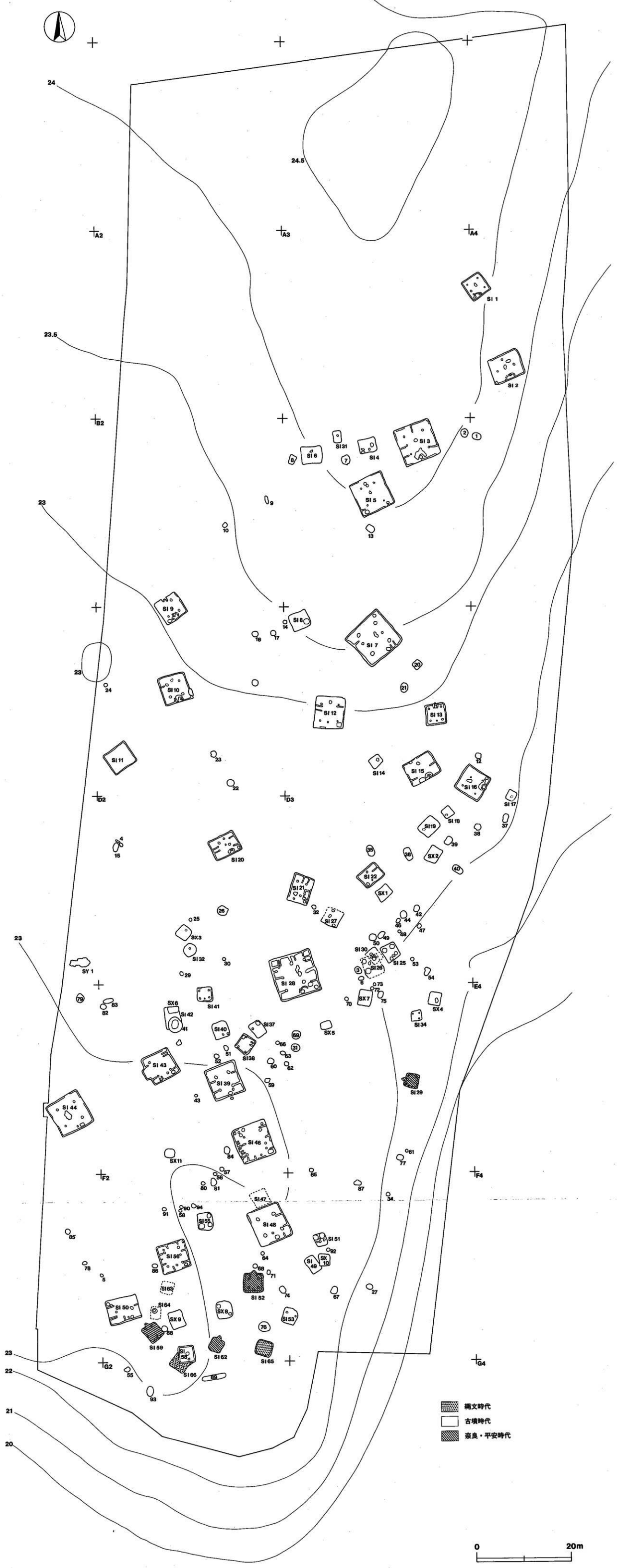
発行 財団法人 茨城県教育財団
〒310 水戸市見和1丁目 356番地の2
TEL 029-225-6587

印刷 株式会社 あけぼの印刷社
〒310 水戸市松が丘2丁目 6番地24号
TEL 029-251-5265

付 図

茨城県教育財団文化財調査報告第106集

馬場遺跡遺構配置図



付図 馬場遺跡遺構配置図