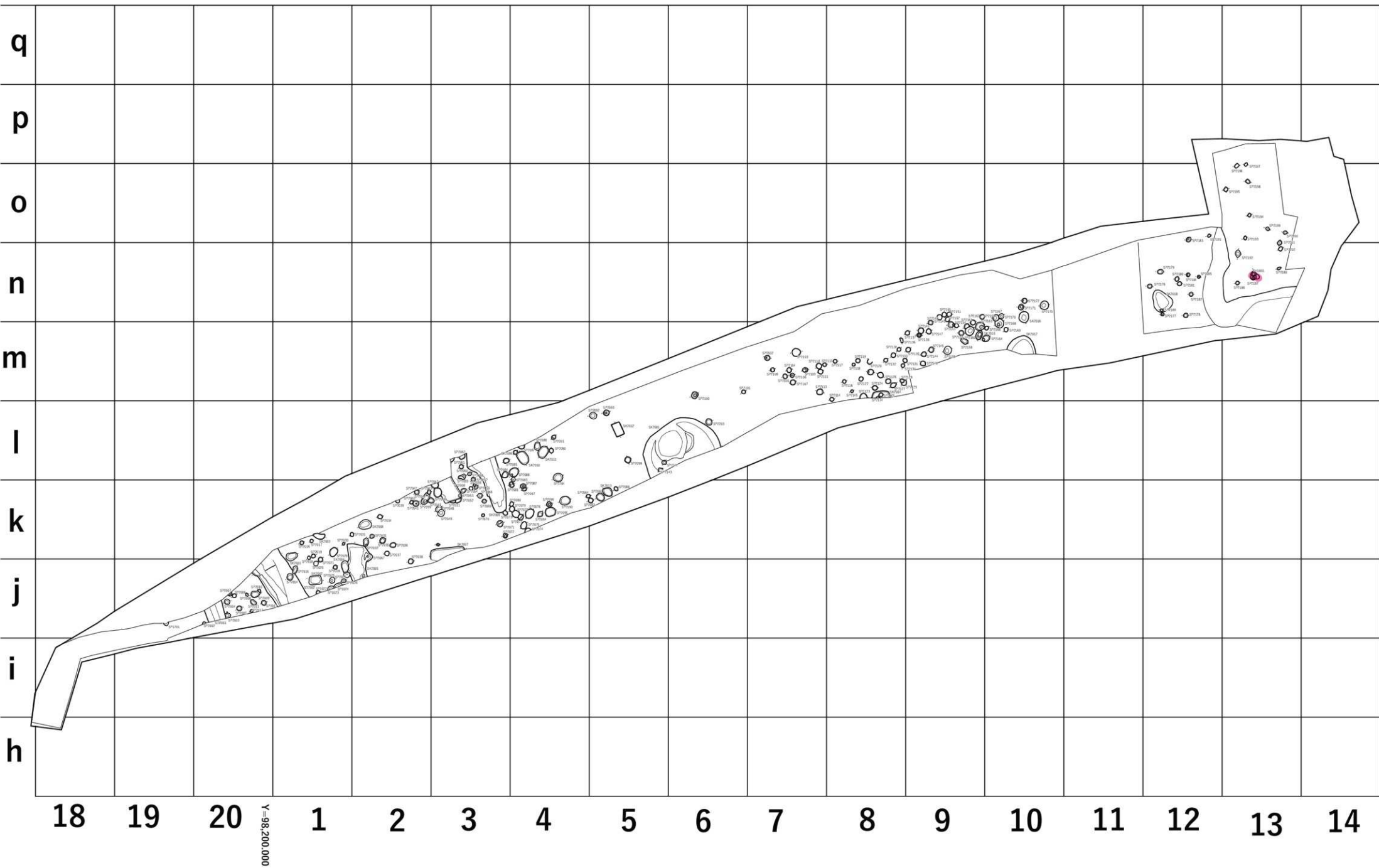


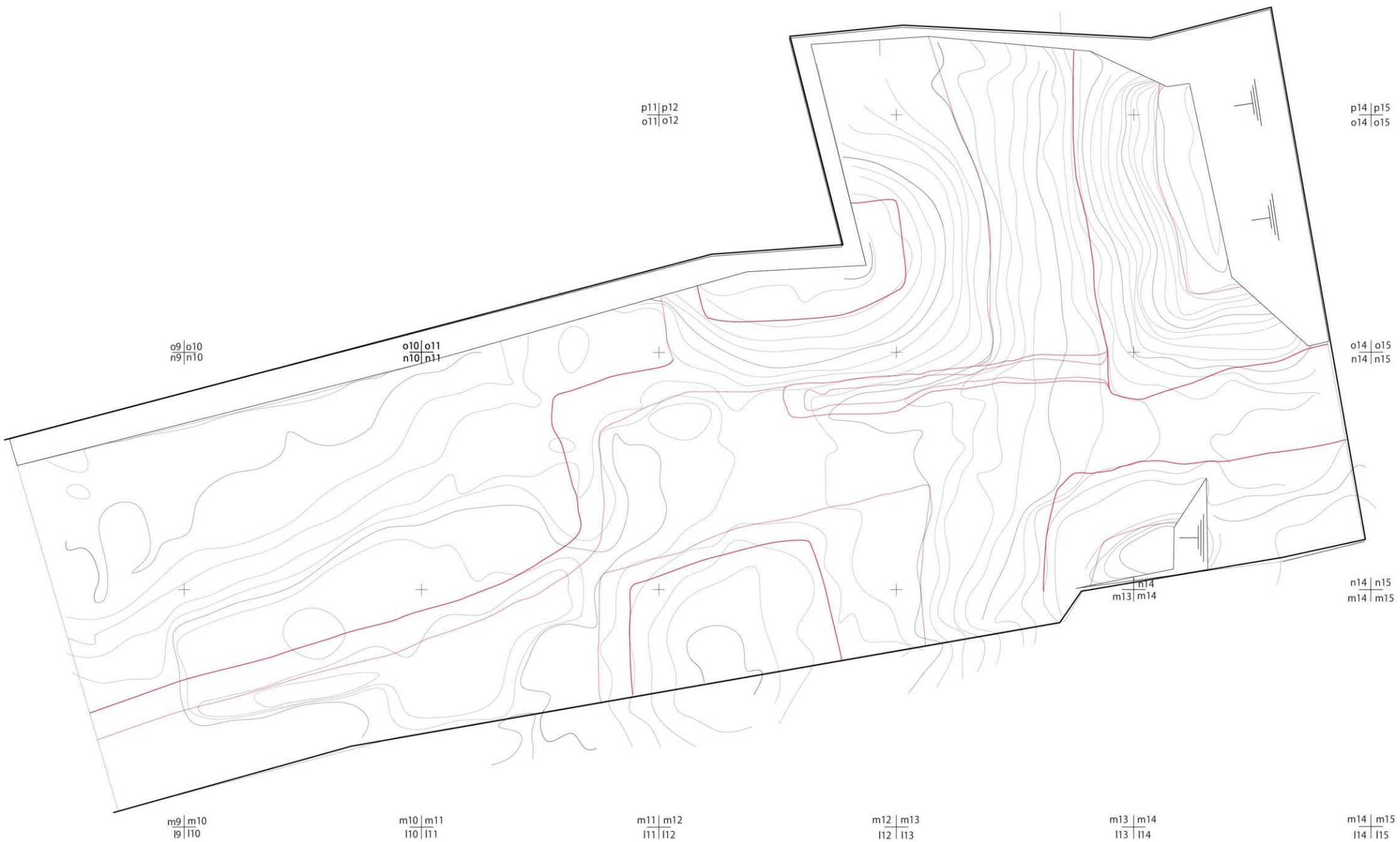
附圖1 第2遺構面遺構配置圖 (S=1/150)

X=1100,900.000

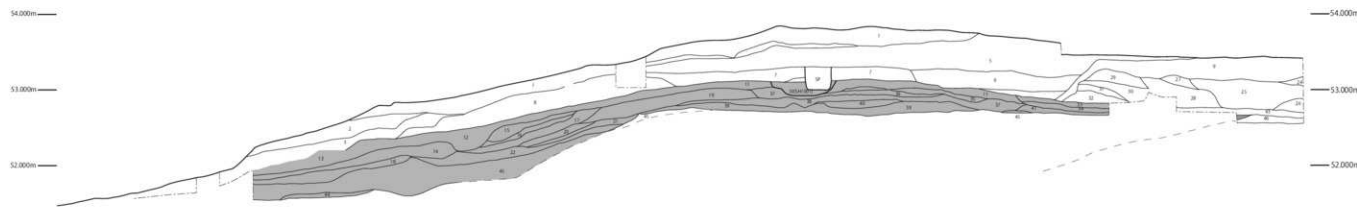




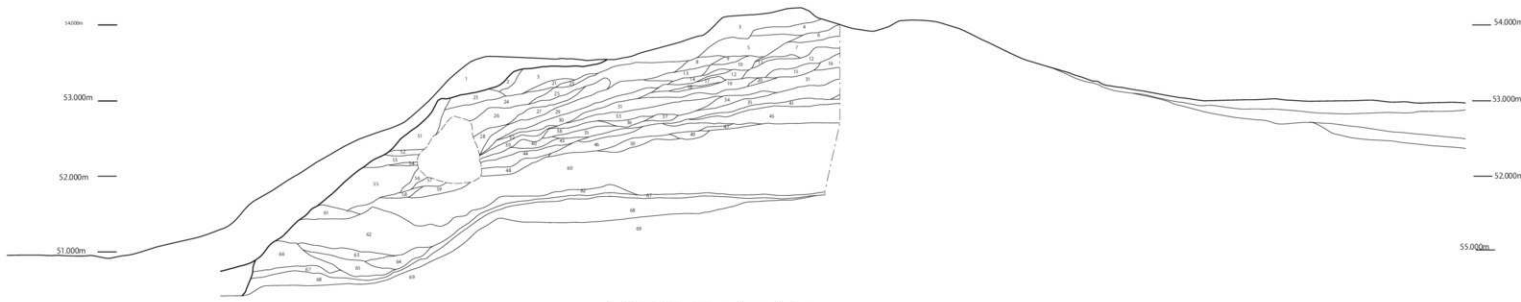
附圖 2 東堀・土橋・虎口・東土壘・櫓台・北土壘平面圖 (S=1/50)



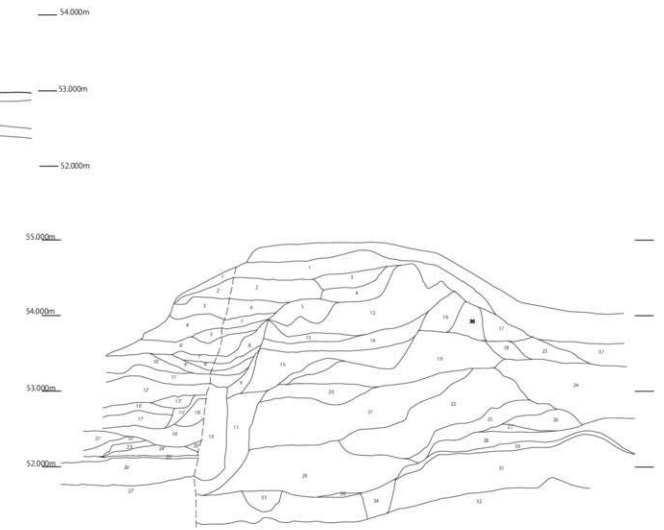
附図3 土塁土層断面図 (S=1/50)



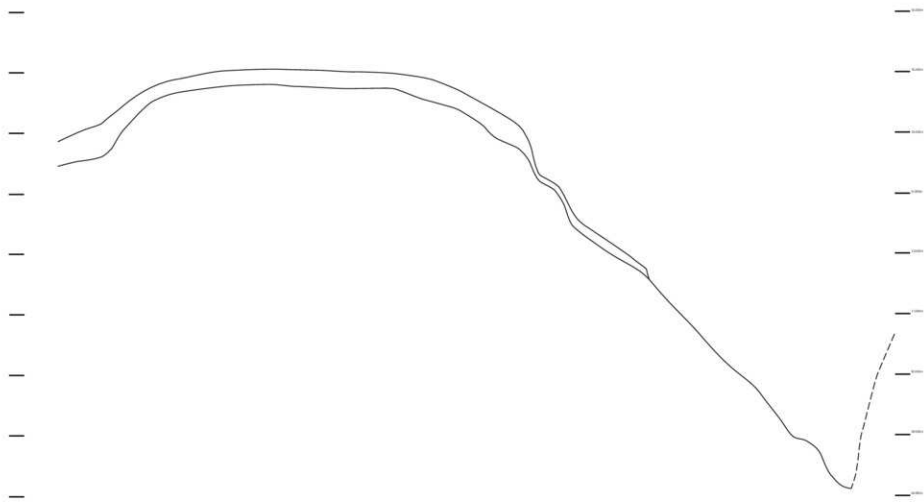
虎口～土橋土層図 (東西方向) S=1/50



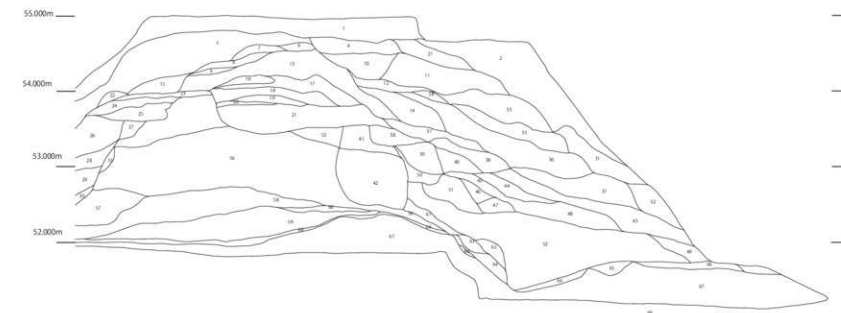
東土塁土層図 (東西方向) S=1/50



北側土塁檜台土層図 (南北方向) S=1/50



檜台～東堀エレベーション (東西方向) S=1/100



北側土塁檜台土層図 (東西方向) S=1/50