



Supported by the Agency for Cultural Affairs, Government of Japan,
Grants-in-Aid for Promotion of Culture and Arts
(Project to Support Art Museums and
History Museums in Priority Areas)

Research Interrelations

Cultural Properties

Archaeology

Traditional Techniques

Fine Arts and Crafts

Modern Arts

Intangible Cultural Properties

Immovable Cultural Properties

Cinematographic Techniques

Architecture

Natural History

Ethical Cultural Properties



Tel: +81-(0)3-3822-1111 Mail: info_bosai@nich.go.jp URL: <https://ch-drm.nich.go.jp/>



Project to Support Art Museums and History Museums in Priority Areas

Cultural Heritage Disaster Risk Mitigation Network (CH-DRM Net), Japan

Protecting Our Cultural Heritage and Passing It On to the Future

Message from the President



Activity of the Committee for Salvaging Cultural Properties Affected by the 2011 Earthquake off the Pacific Coast of Tohoku and Related Disasters, 2011.
(Photo by Teraguchi Junji)



The National Task Force for the Cultural Heritage Disaster Risk Mitigation Network (CH-DRM Net) was established in July 2014 following the work of the Committee for Salvaging Cultural Properties initiated in response to the devastation wrecked by the 2011 Great East Japan Earthquake.

Over the more than four years since then the network has been expanded and strengthened to include a total of 24 museums, libraries, archives, and academic societies, and other organizations in Japan. We are especially grateful to have the support of local authorities and networks for historical materials, as well as many people in a broad range of fields. This network is sorely needed as Japan is hit over and over again by natural disasters that bring great urgency to the effort to protect and salvage our invaluable cultural heritage. The most recent onslaught of natural disasters include the torrential rains of 2015 in the Kanto and Tohoku regions, the Kumamoto and Tottori earthquakes of 2016, the torrential rains of 2017 in northern Kyushu, and, most recently, the 2018 earthquakes in Osaka and Hokkaido, torrential rains in western Japan, and several typhoons. We are currently working to further strengthen our collaborative ties with the Agency for Cultural Affairs and other related organizations for a more robust CH-DRM Net. We ask for your continued support and encouragement in promoting our efforts.

July 2019

Chair, Headquarters of the National Task Force for the Cultural Heritage Disaster Risk Mitigation Network (CH-DRM Net), Japan
President, National Institutes for Cultural Heritage (NICH),
Independent Administrative Institution

Keiji Matsumura

| | |
|--|----|
| Message from the President | 02 |
| Purpose and Context of CH-DRM Net Activities | 03 |
| Organization | 05 |
| Goals of the National Task Force for CH-DRM Net | 07 |
| 1. Framework Development | 09 |
| 2. Research and Surveys | 12 |
| 3. Fostering Human Resources Development and Disseminating Information | 17 |
| Achronological table | 21 |

Developing a Framework for Mitigating the Effect of Disasters on Cultural Heritage in Japan



Artwork being carried out of the Ishinomaki Cultural Center, 2011.

An Overview

The Great East Japan Earthquake that struck on 11 March 2011 caused a huge tsunami and triggered an accident at the Fukushima nuclear power plant, compelling local residents to evacuate. The combined disaster also damaged large numbers of valuable cultural objects and materials. This led the Agency for Cultural Affairs (ACA) to call for the National Institutes for Cultural Heritage (NICH) and 13 other arts and culture organizations to form a special committee to launch a cultural properties rescue operation.

In April 2011, the Committee for Salvaging Cultural Properties Affected by the 2011 Earthquake off the Pacific Coast of Tohoku and Related Disasters was created in the NICH's Tokyo National Research Institute for Cultural Properties.

The Committee worked to salvage not only valuable works of art and crafts but also numerous natural history specimens, official documents, books, and other artifacts reflecting the history and culture of the four prefectures of Miyagi, Iwate, Ibaraki, and Fukushima.* When the Committee was disbanded after two years of intensive work, a symposium was held in March 2013 to review its achievements. The symposium concluded with the recommenda-

tion that the framework for the Committee's operations should be retained so as to be prepared for future disasters, large and small.

Following deliberations by the ACA and NICH, the National Task Force for the Cultural Heritage Disaster Risk Mitigation Network (CH-DRM Net) was launched in July 2014 with funding from the ACA's Grants-in-Aid for Promotion of Culture and Arts (Project to Support Art Museums and History Museums in Priority Areas).

* Rescue Programs for Cultural Properties Damaged in the Great East Japan Earthquake (Cultural Property Rescue Programs) by ACA: These are ACA's emergency programs to preserve cultural properties damaged or threatened in a natural disaster and protect them from being discarded, scattered or stolen. The programs are undertaken as needed depending on the extent and character of the disaster. The first of these rescue operations was undertaken at the time of the Great Hanshin-Awaji Earthquake of 1995. The cultural properties rescue operation following the Great East Japan Earthquake of 2011 lasted for two years. A more recent rescue operation was undertaken after the Kumamoto earthquakes of 2016.

CH-DRM Net Objectives

The CH-DRM Net Headquarters (chaired by the NICH President and comprising NICH museum and research institute directors), set up under the auspices of the NICH, has a secretariat staffed by concurrently appointed researchers from the various NICH institutions who are involved in diverse network-building activities.

The CH-DRM Net comprises the following three major components:

- (1) Daily maintenance and management of cultural properties, reporting and information sharing in case of emergency, and salvage activities carried out in conjunction with the ACA and prefectural and municipal authorities as provided for by the Act on Protection of Cultural Properties.
- (2) Regional networking activities involving prefectural museums, libraries and archives, and networks for local historical materials formed by history and folklore researchers.
- (3) The CH-DRM Net Executive Council, a group primarily made up of the organizations that were involved in the earlier Committee for Salvaging Cultural Properties Affected by the 2011 Earthquake off the Pacific Coast of Tohoku and Related Disasters. (As of August 2018, the Council had 24 members.)

Ideally, advance preparations are the best way to prevent or limit damage to cultural properties in the event of a disaster. When, in a worst-case scenario, cultural properties are damaged, prompt action is needed to minimize the impact by sending people with the appropriate expertise to assess the damage and plan and implement recovery measures. Through its network, CH-DRM Net carries out technological research and promotes the implementation of effective measures directed at establishing a national framework for cultural properties disaster mitigation.



Cultural heritage activities in case of the Kumamoto Earthquakes, 2016.



Salvage of water damaged administrative documents at Jojo City Hall, 2015.



CH-DRM Net executive council meetings

CH-DRM Net Headquarters

Situated inside the NICS, the CH-DRM Net Headquarters is chaired by the NICS President and comprises the directors and staff members of the seven NICS institutions. Members meet to deliberate the future of the network and its activities. Under the Headquarters is the CH-DRM secretariat where concurrently appointed researchers from the NICS institutions are involved in diverse activities to advance the CH-DRM Net.

CH-DRM Net Executive Council

The CH-DRM Net Executive Council was first convened by NCIS, which called upon related institutions and organizations—primarily those in the Committee for Salvaging Cultural Properties Affected by the 2011 Earthquake off the Pacific Coast of Tohoku and Related Disasters—to come together to discuss their shared concerns and deliberate the need for a disaster mitigation network and how it should be advanced.

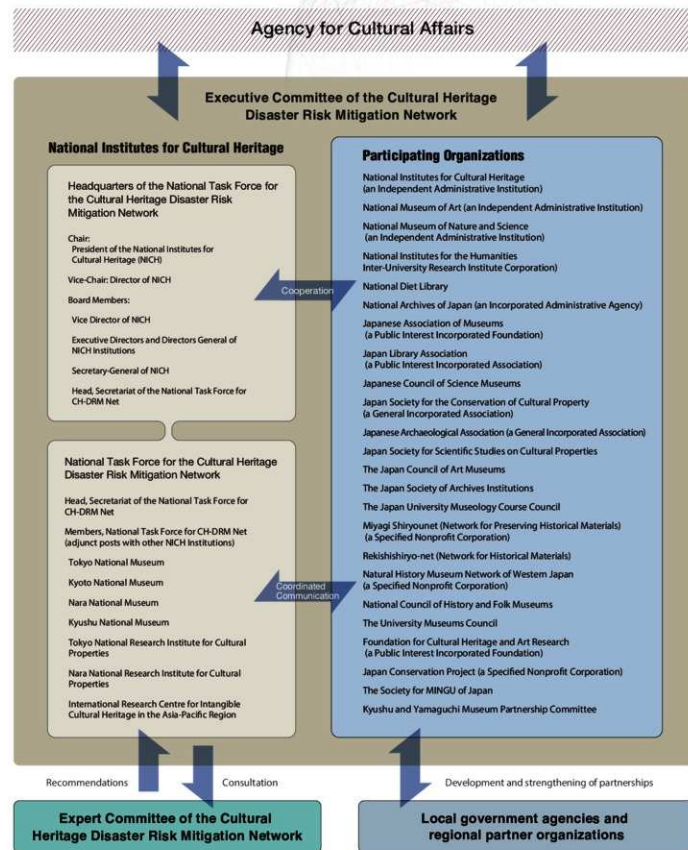
The Council, augmented by the attendance of personnel from the ACA, meets to exchange information on the disaster mitigation endeavors of various network organizations and discuss how the whole overall network can be most effectively deployed at the time of actual disasters.

With each natural disaster that has occurred to date, the Council member organizations have acted promptly to gather and consolidate information, and an effective system is on the verge of being finalized to communicate this information to the CH-DRM Net secretariat in a timely manner.

The Executive Council is actively calling on other organizations that support its objectives to join its current 24 members.

CH-DRM Net expert Committee

The CH-DRM Net Panel of Experts brings together academic authorities and highly experienced professionals from a diverse range of fields related to cultural properties to assist in formulating strategies for building the network and achieving its objectives. The Panel currently comprises 11 members and meets twice a year.



Goals of the National Task Force for CH-DR M Net



CH-DR M Net executive council meetings in 2018.

1. Framework Development

- (1) The Task Force strives to deepen public understanding for regional cultural heritage.
- (2) When a natural disaster occurs, it quickly gathers information about affected cultural heritage and conducts surveys or inventories.
- (3) It reviews the partnerships and cooperation necessary to employ optimal methods for the salvage, conservation, and storage of cultural heritage in the disaster areas.
- (4) It develops a large-scale system for mutual cooperation among owners of cultural heritage, local citizens, stakeholder organizations, groups and experts, local government agencies, and the national government.

2. Conducting Research

- (1) The Task Force conducts research on types of disaster mitigation, rescue, and conservation for cultural heritage, and then disseminates information on the results of those studies.
- (2) It conducts research on diagnosing deterioration, conservation environment, stabilization measures, and conservation for disaster-affected cultural heritage, and utilizes the results of these studies in onsite operations as appropriate.
- (3) It conducts research on such issues as disaster risk mitigation for intangible cultural heritage and preservation of cultural heritage after disasters.

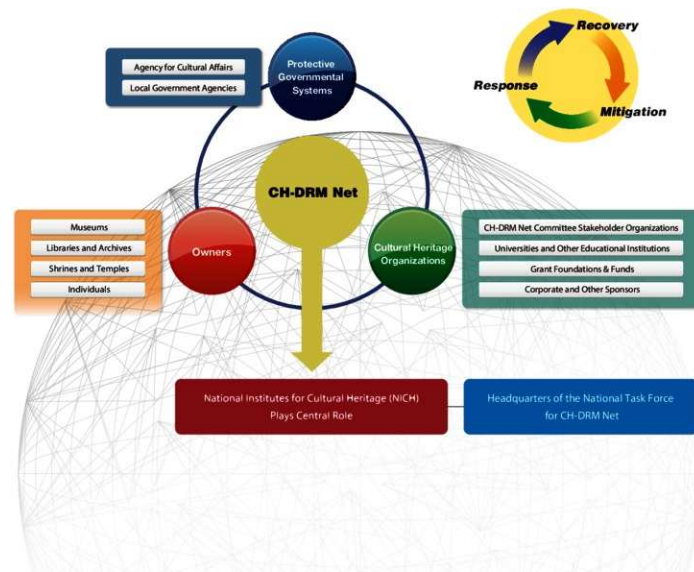
3. Fostering Human Resources Development and Disseminating Information

- (1) The Task Force utilizes the results of research studies and methods and techniques from related groups and experts in order to try and train professionals capable of carrying out the disaster risk mitigation and salvage of cultural heritage. It provides trainings to officials of local government agencies.
- (2) It holds lectures and symposia to deepen understanding among regional residents of cultural heritage disaster risk mitigation and to heighten awareness of ongoing conservation of regional cultural heritage.

A Partnership Framework for Protecting Cultural Heritage



CH-DRM Net annual meeting.



1. Building a Framework

Promoting the formation of regional networks

Cultural properties are to be found in every region. With prefectures as regional units, there is a need to build networks of daily interaction that can be promptly activated in the event of a disaster to gather and communicate information on the damage to cultural properties and later to salvage those properties.

To assist in this process of regional network building, we carry out hearings and surveys, speaking to the persons in charge of cultural properties in prefectural and municipal administrative offices, museums, libraries, and archives, as well as the historians and researchers in regional networks for historical materials and other such groups, sponsor collaborative conferences, and attend various regional collaborative meetings.



Regional meetings (Kinki and Chubu area).



Regional meetings (Kanto and Koshuetsu area).



Regional meetings (Chugoku and Shikoku area).



Investigation on cultural heritage disaster prevention in Wakayama Prefecture, FY2016.



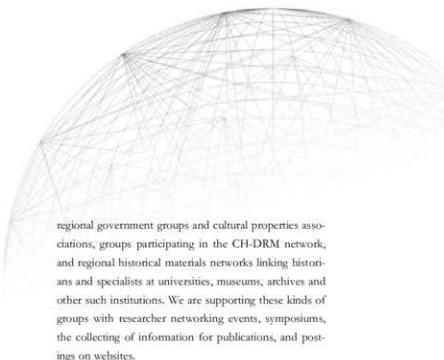
Research reports

Investigative research and recommendations for drafting regional disaster mitigation plans

The Disaster Countermeasures Basic Plan based on the Disaster Countermeasures Basic Act sets forth the legal underpinnings for cultural properties disaster mitigation by each of the prefectures, but the measures vary, do not always reflect actual circumstances, and often are not being fully implemented. As the Basic Plan undergoes a major review launched after the Great East Japan Earthquake, we have been drafting a variety of advanced scenarios for disaster preparedness related to cultural properties which provide roadmaps for structuring local organizations that can launch effective initial responses when disaster strikes. These scenarios and organizational recommendations are based on extensive investigative studies and examples of municipalities that have taken the lead in implementing measures for their own cultural properties.

Collecting information on organizations and groups involved in cultural properties disaster mitigation

As interest grows throughout the country in protecting cultural properties from disaster, numerous groups have emerged to undertake a range of functions. These include



regional government groups and cultural properties associations, groups participating in the CH-DRM network, and regional historical materials networks linking historians and specialists at universities, museums, archives and other such institutions. We are supporting these kinds of groups with researcher networking events, symposiums, the collecting of information for publications, and postings on websites.

Deliberations on building technology networks for cultural properties disaster mitigation

We are currently reviewing the options available throughout the country for temporary storage facilities, freezers, and vacuum freezer dryers for cultural properties salvaged after a natural disaster. Discussions are also underway with transport companies and others regarding prompt transport of cultural properties out of disaster-hit areas.

Disaster mitigation guidelines for cultural properties

We are drafting guidelines to help regional groups and specialists coordinate their efforts in the event of a natural disaster for prompt and effective action to mitigate the effect on cultural properties.



Opinion exchange meeting at Nara National Museum, FY2018.



CH-DRM Net Reporting meeting, FY2018.



CH-DRM Net Working Group meeting in 2019.

2. Conducting Research

Building and sharing a database on the locations of cultural properties

We conduct investigative research and build databases to contribute to salvage and preservation activities undertaken as a part of disaster mitigation and in response to natural disasters and draft recommendations for future cultural properties databases.

(1) Collecting, collating, and sharing data on regionally designated cultural properties

For nationally designated cultural properties, the Agency for Cultural Affairs maintains two databases: Cultural Heritage Online and the Nationally Designated Cultural Properties database. There is still, however, no integrated database of regionally designated cultural properties. We are working to build and integrate regional databases of movable and fixed regional cultural properties and intangible cultural heritage that can be used in the management of cultural properties during normal times and contribute to prompt assessment of damage and recovery efforts in the event of a natural disaster.

(2) Building a database compiling archeological evidence of historical disasters

We are building a database of historical disasters using data from more than 10,000 archeological sites and more than 800 data points of traces left by past natural disasters. Our objective is to track the history of disasters that do not appear in historical records and to collect information on prehistoric natural disasters that will be useful in disaster mitigation hereafter.

Investigative research to document intangible cultural heritage

Natural disasters can be devastating and even destroy

whole communities, leading to the loss of annual community rites and traditional occupations. Still, communities can be revived when traditional rites are reinstated, and the techniques of local crafts and occupations reclaimed. To prevent the loss of such intangible cultural heritage and to provide the means for reviving communities, we are exploring ways to create video records and other such tools.

Creating video records of cultural property rescue operations

We are recording videos of rescue operation procedures that provide a means of reviewing the operation and

implementing appropriate measures for the future.

Additionally, we are creating videos showing the step-by-step processes of salvage and preservation that can be used as learning materials in workshops and dissemination activities as well as for reference in the event of an actual disaster

Creating maps for the preservation of regional cultural properties

To prevent the total extinction of regional cultural heritage, we are making comprehensive lists encompassing different fields and drafting a model digital map that organically links already existing materials. This operation is being carried out with the cooperation of owners of cultural properties and related organizations in the two towns of Yuasa and Higashigawa in the Arida district of Wakayama Prefecture.

Research on preserving and creating a conservation environment for disaster damaged cultural properties, and drafting and publicizing procedure handbooks

Cultural properties can be damaged in many different ways depending on the type and scale of the natural disaster.



Visual Documentation of Intangible Cultural Heritage as a Tool for Safeguarding Activities, FY2018.



"Manual for cultural property disaster prevention" series. These introduce the first aid example of the stricken documents.



Investigation of facilities related cultural properties that storage biological specimens, FY2018.

Prompt salvage and preservation are essential and a hand-book giving step-by-step instructions can be invaluable to those working on site. There are already numerous hand-books of this type prepared by various organizations and specialists, but in a disaster situation it may not always be possible to carry out the procedures they outline. There are cases, as well, in which initial procedures are later found to lead to new problems. NICH has divisions for research on conservation and restoration technologies, and also has researchers specializing in the preservation of cultural properties at each of its museums. With these resources and the additional help of outside specialists, we are pursuing research on preservation procedures and methods. In fiscal 2017, a DVD was created explaining the procedures for cleaning damaged paper materials, and in 2018, a second DVD was created on cleaning damaged folkloric materials. These DVDs were also posted on our website.

Investigative research on disaster mitigation and the mineralization of damage to natural objects found at archeological sites

This research is directed at investigating the natural objects—plants and animals—discovered in archeological sites and currently stored in facilities located in disaster-stricken areas. The objective is to acquire sufficient data to draft policies on appropriate storage and management to mitigate the effects of a disaster. We are also gathering information on natural history specimen collections currently held by local public authorities and organizations, and as one case study, we are compiling a full list of the shell specimens belonging to the Nara National Research Institute for Cultural Properties. As we carry out these activities, we are exploring ways to share and disseminate the locations of these kinds of materials.

Compiling case studies of damage incurred by cultural properties in a disaster

The damage caused to cultural properties differs for every disaster and cannot be easily cataloged into a single manual. Instead, we are investigating the extent and types of damage incurred in past disasters and the actions taken for salvage and restoration. It is our hope that case studies of this kind can provide hints for ways to cope with the damage that may be caused by future disasters.



Making list of reports about natural history specimens damaged by disaster, FY2018.



Research on stabilization processing and microbial control of tsunami damaged documents, FY2018.

Examining the various aspects of dealing with cultural property damage caused by natural disasters

With every natural disaster, we send out specialists and provide technology and information. We also assess recent salvage activities and apply our findings to develop new systems and solve technical problems. After the Kumamoto earthquakes of April 2016, we responded to a request from the Agency for Cultural Affairs to collaborate with Kumamoto Prefecture on cultural property rescue operations. In August of the same year, 2,500 books in the Tono City Library in Iwate Prefecture were badly damaged following a major typhoon. In close collaboration with the library, we took part in an experimental operation to immediately ship out the damaged books and store them in a freezer within one week of the typhoon. After treating the books according to their value and extent of damage, we were able to restore them without any secondary damage, such as mold, and return every one of the books to the library. After the torrential rains that plummeted northern Kyushu in July 2017, Fukuoka Prefecture

authorities were able to carry out prompt rescue operations to salvage damaged cultural properties. Through this kind of accumulation of knowhow and experience with disasters of medium to small size, we hope to be better prepared for future large-scale disasters.

Research on safety measures for museum displays and collections

Japan is an earthquake-prone country and there has long been a need for earthquake-proof structures. After the damage suffered by museums in the wake of the Great Hanshin-Awaji Earthquake of 1995, efforts were launched to install seismic isolators and improve and develop other devices to protect museums and their contents from earthquake damage. While this process is ongoing, there are cases of older structures for which the costs of retrofitting would impose too much of a financial burden. We are currently deliberating safety measures tailored to the unique circumstances of each facility and researching ways to solve the diverse problems that arise.



Research Meeting on Safety Measures for Display and Storage of Museum Objects, FY2018.



Research on Safety Measures for Displaying Objects in Museum, FY2019.

Fostering human resources to implement cultural property disaster mitigation and expanding collaborative networks to include more specialists and organizations



Special Lecture "Considering Cultural Heritage Disaster Risk Mitigation and Disaster Preparedness Together With History" at Kyushu National Museum, FY2018.



CH-DRM Net Symposium at Kyoto National Museum, FY2018.



CH-DRM Net Symposium at KICC (Kishida Open Innovation Center at Kyoto), FY2018.

3. Fostering Human Resources Development and Disseminating Information



Workshop for museums about environmental monitoring as preparedness for disasters, at Tokyo National Institute for Cultural Properties, FY2018.



Training course on preparedness for flood in cultural properties at Kyoto National Museum, FY2018.

Symposiums and research study meetings

Symposiums are held throughout the country to increase public knowledge of our existence and activities and to heighten public awareness of the need for cultural property disaster mitigation. We also sponsor domestic study meetings where specialists can exchange information on technology and the objectives for preserving regional cultural properties. Additionally, we sponsor international symposiums to learn from the experiences of specialists outside of Japan and to deepen our knowledge of the field.



CH-DRM Net International Symposium at Ritsumeikan University, FY2018.



❶ Lectures on the types and effects of radiation and methods for measuring it at Fukushima Prefecture Cultural Property Center, FY2016.

❷ CH-DRM Net Annual Workshop held at Nara National Institute for Cultural Properties, FY2018.

❸ Workshop on learning how to dry paper documents damaged by water, at Nara National Research Institute for Cultural Properties, FY2018.

❹ Cooperation with regional volunteers to collect basic information on local cultural heritage in Fukuoka Prefecture, FY2016.

❺ Learning how to treat armor assuming Cultural heritage rescue activities in Kumamoto Prefecture, FY2017.

❻ Cleaning cultural properties damaged the Kumamoto earthquakes in Kumamoto Prefecture, FY2017.



Training programs

Specialized knowledge and experience is required in handling cultural properties that have been damaged in a disaster. To impart this kind of knowledge, we hold training programs for the people in regional administrative departments in charge of cultural properties. We have also found it effective to provide specialized training programs for firefighters and people involved in transporting cultural properties. Finally, in an effort to share our experience and expertise with cohorts overseas, we deploy instructors to participate in international workshops and training programs for the disaster mitigation of cultural properties in other countries.



Satellite telephone operation training as part of comprehensive disaster prevention training at Kyoto National Museum, FY2017.

This training taught appropriate methods for handling cultural properties to firefighters, with the assumption that these first responders might actually do the salvage. It held at Tokyo National Museum in FY2015.



Disseminating information online

Information on our activities is regularly updated on our website. We also introduce the activities of other groups involved in cultural property disaster mitigation, with the objective of enhancing public awareness of the need to be always prepared and to collaborate to protect and preserve our cultural heritage. We strive to act with speed and accuracy in collecting and disseminating information in the event of a natural disaster.

URL : <https://ch-drm.nich.go.jp/eng/>



Achronological table

FY 2014

| | |
|----------------------|--|
| July 23, 2014 | Headquarters of the National Task Force for the Cultural Heritage Disaster Risk Mitigation Network (CH-DRM Net) |
| October 21, 2014 | 1st Meeting of the Executive Committee of the Cultural Heritage Disaster Risk Mitigation Network (CH-DRM Net) |
| October 29–30, 2014 | Cooperation in Rescue Efforts for Cultural Properties (documents from disaster areas in Futaba Town, Fukushima Prefecture) |
| February 14–15, 2015 | National Historical Materials Networks (Shiryo Net) Conference (Kobe) |
| March 3 to 5, 2015 | CH-DRM Net Annual Workshop held at Nara National Institute for Cultural Properties. |
| March 10, 2015 | 2nd Meeting of the Executive Committee of CH-DRM Net and the 1st Meeting of the Expert Committee of the Cultural Heritage Disaster Risk Mitigation Network (CH-DRM Net) |
| March 10 to 17, 2015 | International Expert Meeting, “Cultural Heritage Disaster and Disaster Resilient Communities,” Tokyo Strategy Meeting (Tokyo), within the Third U.N. World Conference on Disaster Risk Reduction (WCDRR) |

FY 2015

| | |
|----------------------|---|
| June 14, 2015 | Public Symposium, “Considering Cultural Heritage Disaster Risk Mitigation and Disaster Preparedness with the Community, I” (Kyushu National Museum) |
| August 18, 2015 | Training on the stabilization of cultural heritage from disaster areas (Rikuzentakata City Museum) |
| October 2015 | Cooperation in rescue activities for public documents from disaster areas in Joso City due to flooding of the Kinugawa River |
| November 5, 2015 | 3rd Meeting of the Executive Committee of CH-DRM Net and the 2nd Meeting of the Expert Committee of CH-DRM Net |
| November 24–28, 2015 | Symposium, “Japan-China-Korea Academic Research Council on Cultural Heritage Disaster Risk Mitigation” (China) |
| December 6, 2015 | Symposium, “Protecting Cultural Heritage from Disaster: The Past, Present and Future of Cultural Heritage Disaster Risk Mitigation” (Keihanna Open Innovation Center @Kyoto (KICK) / Kyoto) |
| December 13, 2015 | “International Symposium on Cultural Heritage Disaster Risk Mitigation: How Can We Protect Cultural Heritage from Large Scale Disasters—Potential of Blue Shield” (Kyoto National Museum) |
| January–March 2016 | Exhibitions on rescuing cultural heritage from disaster areas (MEXT Information Plaza and Tokyo National Museum) |
| January 24, 2016 | Public Symposium, “Considering Cultural Heritage Disaster Risk Mitigation and Disaster Preparedness with the Community II” (Kyushu National Museum) |
| March 11, 2016 | 4th Meeting of the Executive Committee of CH-DRM Net and the 3rd Meeting of the Expert Committee of CH-DRM Net |
| March 19–20, 2016 | 2nd Research Council on the Japan Historical Document Network (Koriyama) |

FY 2016

| | |
|---------------|--|
| April 2016 | Participation in rescue activities for cultural heritage after the Kumamoto Earthquakes |
| June 30, 2016 | Extraordinary Meeting of the Executive Committee of CH-DRM Net and the 4th Meeting of the Expert Committee of CH-DRM Net |
| July 18, 2016 | Special Lecture, “Considering Cultural Heritage Disaster Risk Mitigation and Disaster Preparedness Together With History” (Kyushu National Museum) |

| | |
|----------------------|---|
| September 2016 | Participation in Salvage Operations for Cultural Properties in Iwate Prefecture after Typhoon Lionrock (Dindo) |
| November 12, 2016 | Symposium, “Protecting Cultural Heritage from Disaster 2: Current Risk—Disaster and Cultural Heritage in Kansai (Keihanna Open Innovation Center @Kyoto (KICK) / Kyoto) |
| November 29, 2016 | 5th Meeting of the Executive Committee of CH-DRM Net and 5th Meeting of the Expert Committee of CH-DRM Net |
| December 4, 2016 | Public Symposium, “Considering Cultural Heritage Disaster Risk Mitigation and Disaster Preparedness with the Community III: Kumamoto Earthquakes and Cultural Heritage Rescue” (Kyushu National Museum) |
| December 17–18, 2016 | 3rd National Historical Materials Networks Conference (Ehime) |
| March 18, 2017 | “International Symposium on Cultural Heritage Disaster Risk Mitigation: How Can We Protect Cultural Heritage from Large Scale Disasters—The Potential of Blue Shield, II” (Tokyo National Research Institute for Cultural Properties) |

FY 2017

| | |
|--------------------|--|
| May 24, 2017 | 6th Meeting of the Executive Committee of CH-DRM Net and 6th Meeting of the Expert Committee of CH-DRM Net |
| July 5, 2017 | Symposium for Exhibition at Parca Asia, “The Role of Museums During Large-Scale Disasters” (Kumamoto Prefecture Community Center Parca) |
| September 16, 2017 | The UNESCO Chair Programme International Training Course on “Cultural Heritage and Risk Management” International Symposium, “Working Internationally toward the Integrated Protection of Cultural Heritage from Disasters” (Ritsumeikan University) |

FY2018

| | |
|--------------------|--|
| September 20, 2018 | International Symposium “Cultural heritage disaster prevention with local communities—Experiences in the world and future in Japan—” (Ritsumeikan University) |
| October 27, 2018 | Symposium “Protect and Inherit cultural assets -Preservation and repair of cultural assets-” |
| January 18, 2019 | Cultural Property Disaster Prevention Liaison Council in Chubu and Kinki district (Nara National Museum) |
| February 10, 2019 | The National Task Force for CH-DRM Net Symposium “Regional disaster prevention and cultural assets -Learn about natural disasters, protect and pass on precious local cultural resources-” |
| February 14, 2019 | The National Task Force for CH-DRM Net seminar “Regional disaster prevention plan initiatives of cultural property in Oita Prefecture” (Kyushu National Museum) |
| February 26, 2019 | Research Meeting on Safety Measures for Display and Storage of Museum Objects (Tokyo National Museum) |
| February 27, 2019 | The National Task Force for CH-DRM Net Workshop “Prepare for flood” (Kyoto National Museum) |

※In addition, at the time of natural disasters, the Task Force quickly ascertains disaster conditions, shares information, conducts surveys, and makes recommendations as necessary (i.e., torrential rainfall in Kanto and Tohoku in September 2015; Kumamoto Earthquakes in April 2016; Typhoon Lionrock in August 2016; torrential rainfall in northern Kyushu in July 2017).

Compiled and published by National Task Force for Cultural Heritage Disaster Risk Mitigation Network Japan, August 2019
(Editor : Ken Okada, Hikaru Shiraki, Yuriko Naito)