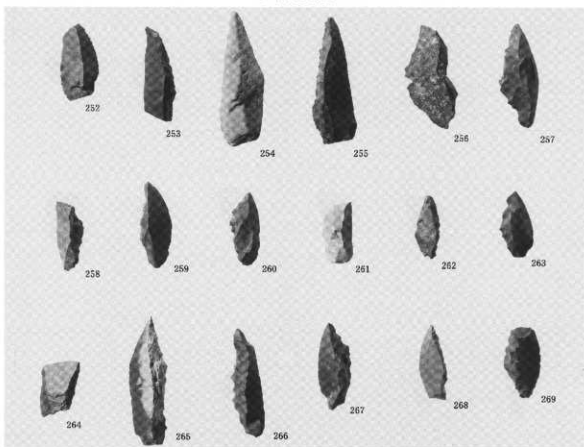
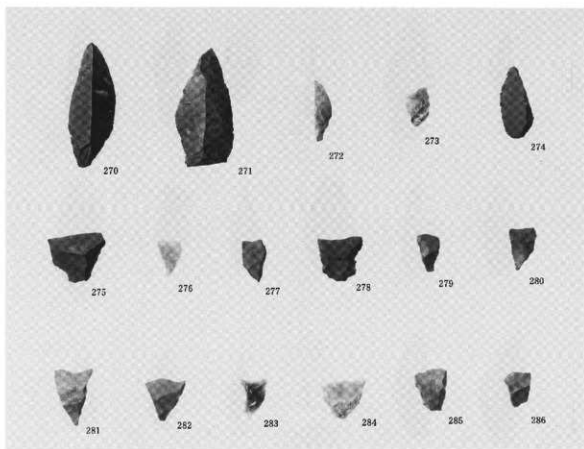


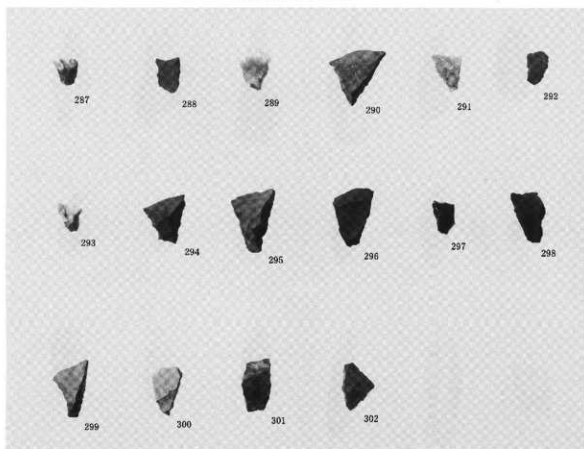
ナイフ形石器



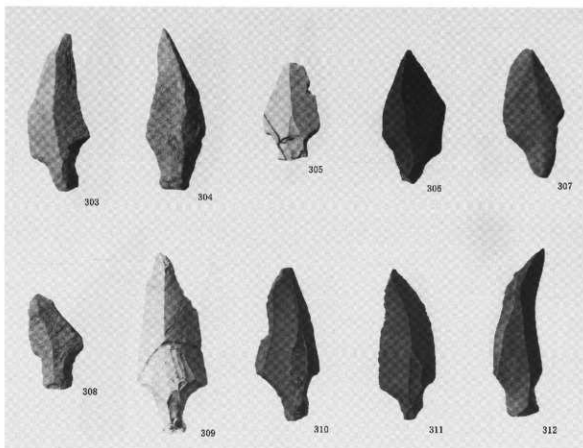
ナイフ形石器



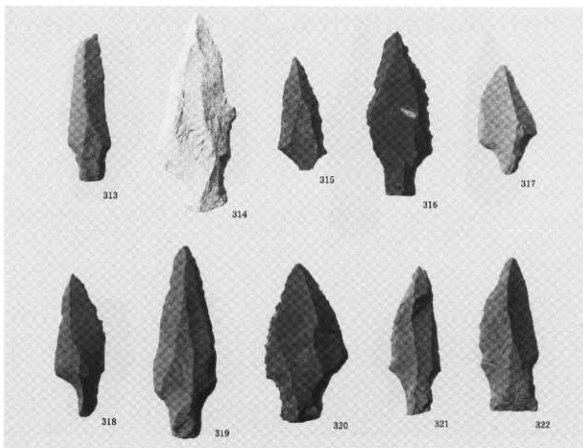
ナイフ形石器・台形石器



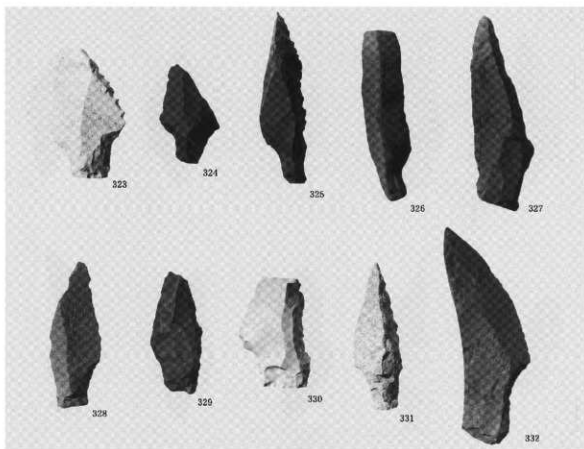
台形石器



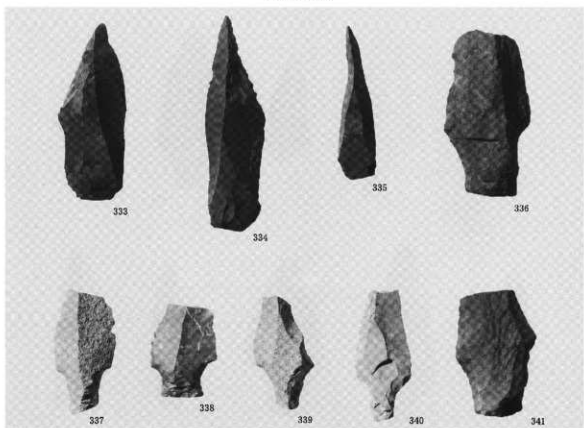
剥片尖頭器



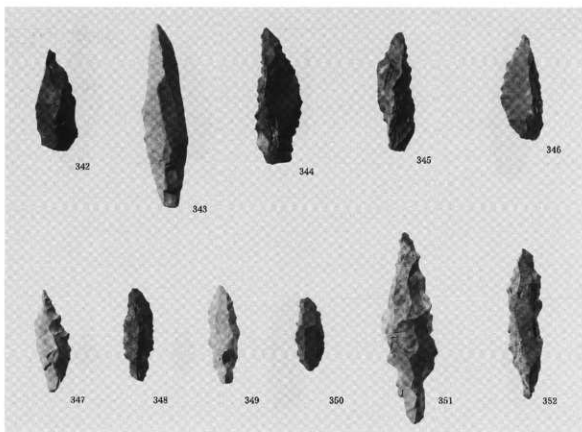
剥片尖頭器



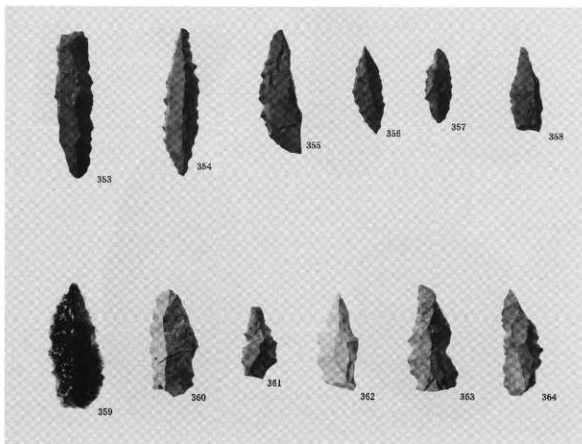
剥片尖頭器



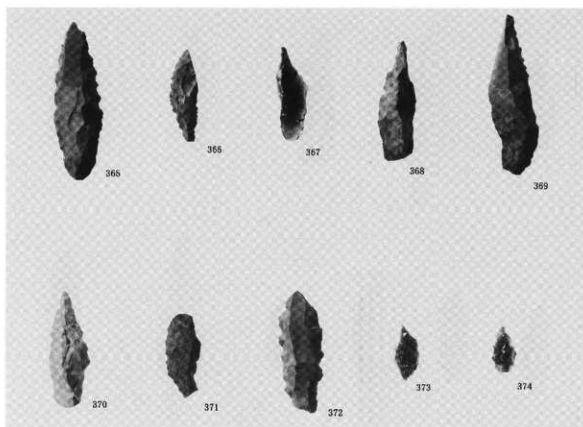
剥片尖頭器



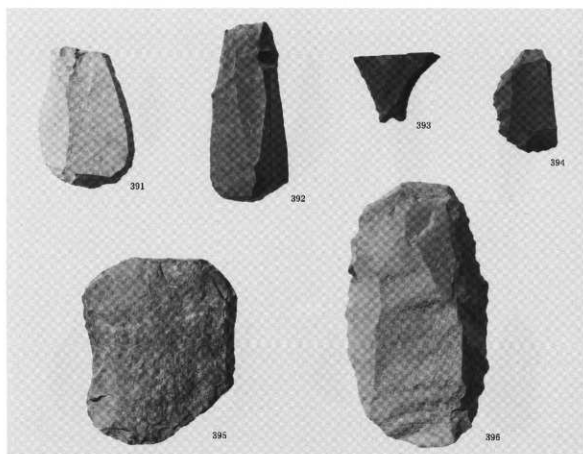
三稜尖頭器



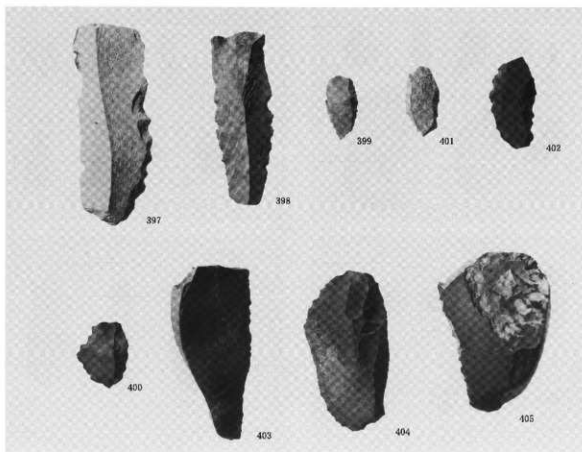
三稜尖頭器



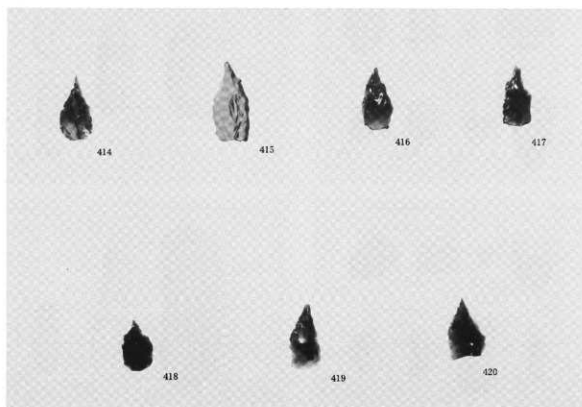
三棱尖頭器



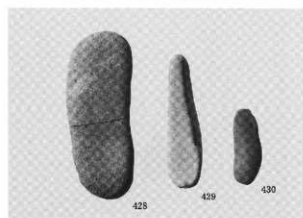
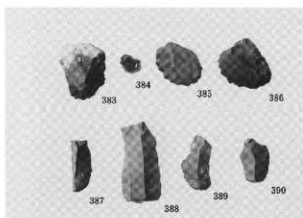
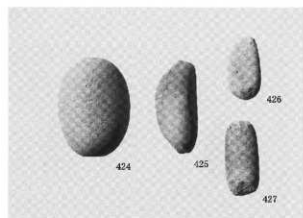
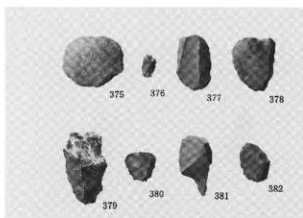
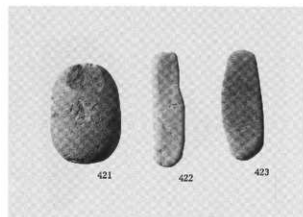
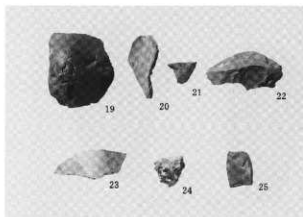
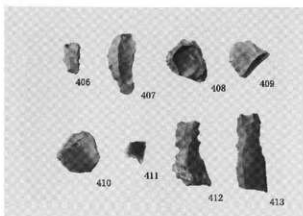
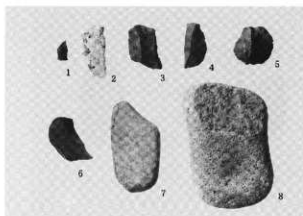
琢器・削器



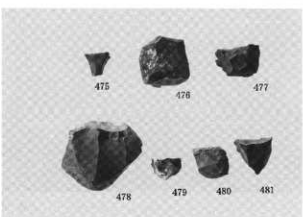
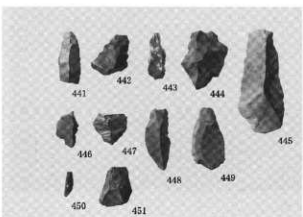
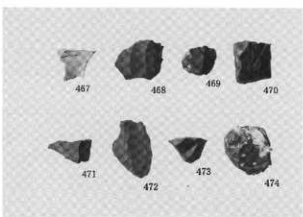
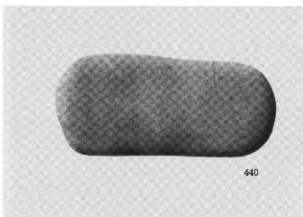
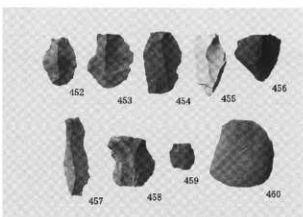
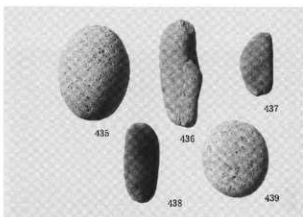
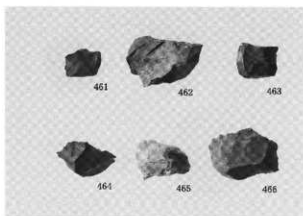
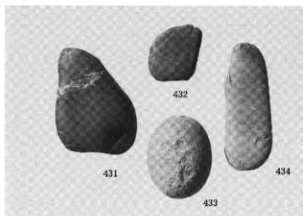
刮 器



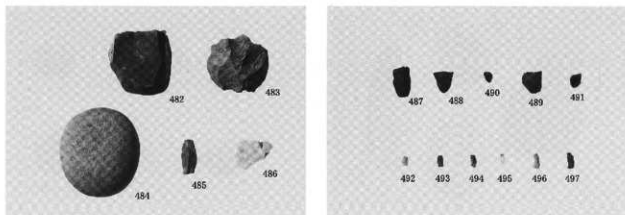
石 錐



出土石器



出土石器



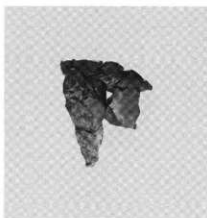
出土石器



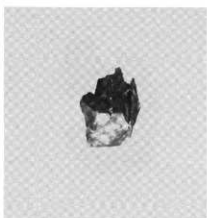
遺跡遠景



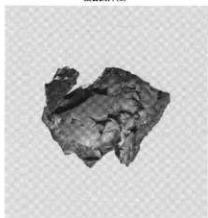
接合試料(1)



接合試料(1) 分割1㊦



接合試料(12)



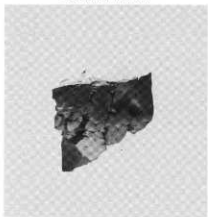
接合試料(1) 分割1㊧



接合試料(2)



接合試料(21)



接合試料(1) 分割1㊨



接合試料(5)



接合試料(28)㊩



接合試料(1) 分割1㊪



接合試料(7)



接合試料(28)㊫



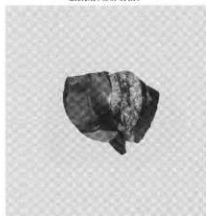
接合試料(28) 分割8



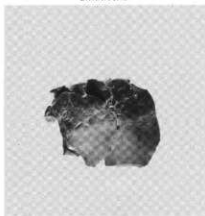
接合試料(34)



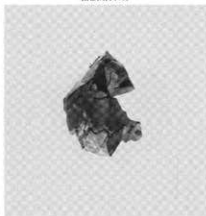
接合試料(43)



接合試料(29) 分割6-7



接合試料(35)



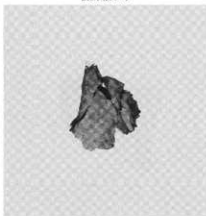
接合試料(45)



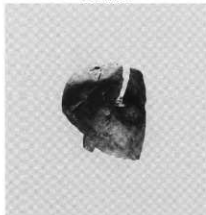
接合試料(30)



接合試料(38)



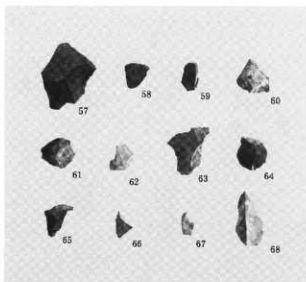
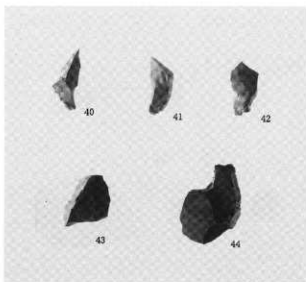
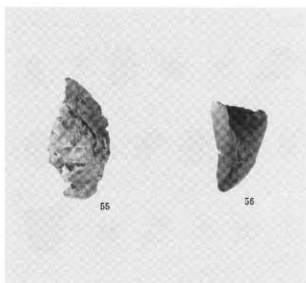
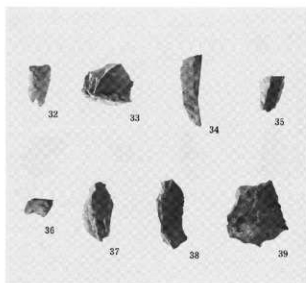
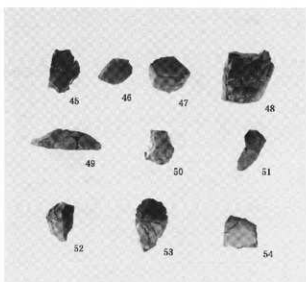
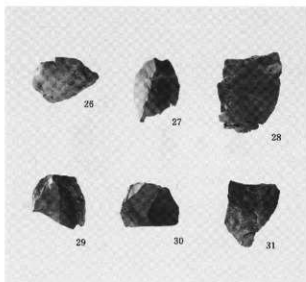
接合試料(48)



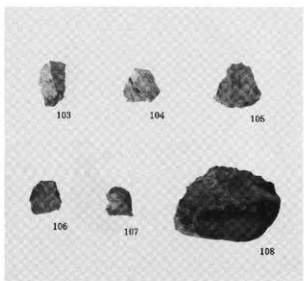
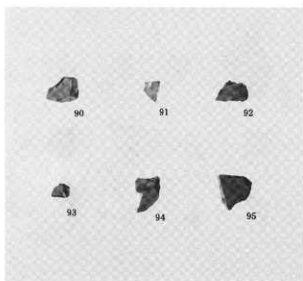
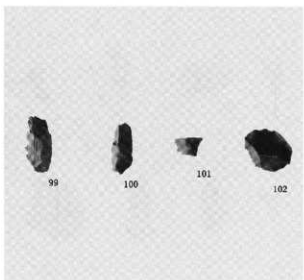
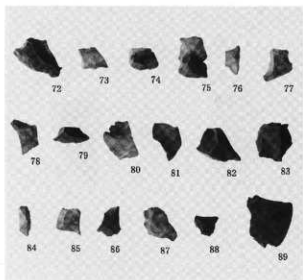
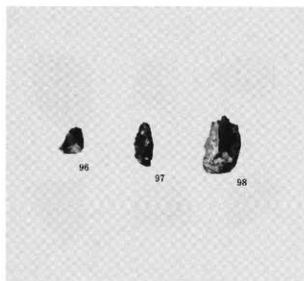
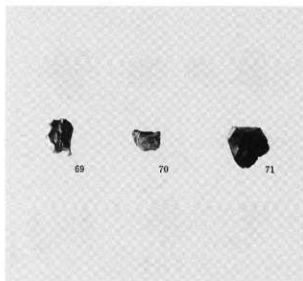
接合試料(33) 分割33①②



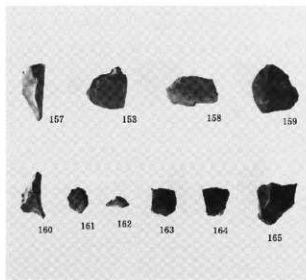
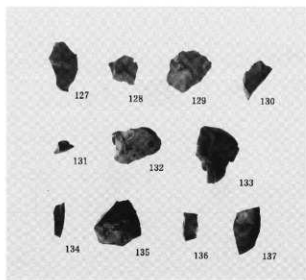
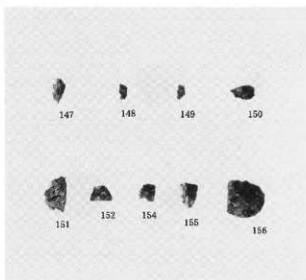
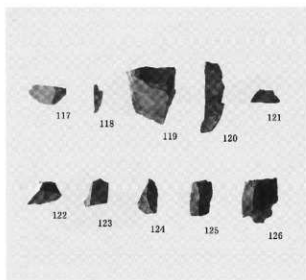
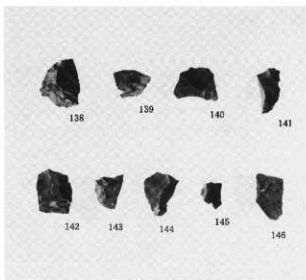
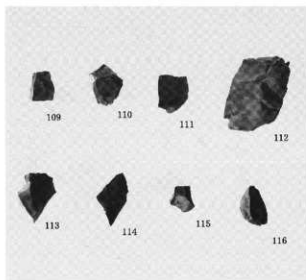
接合試料(39)



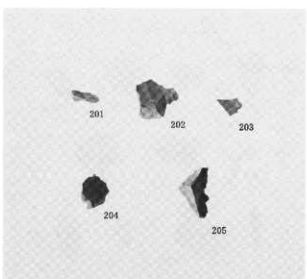
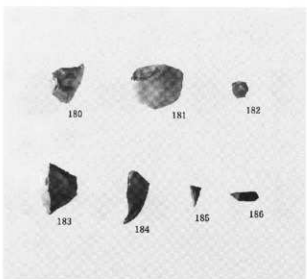
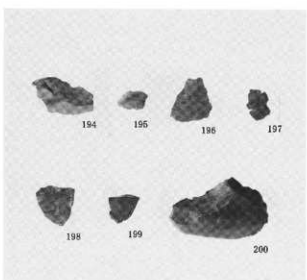
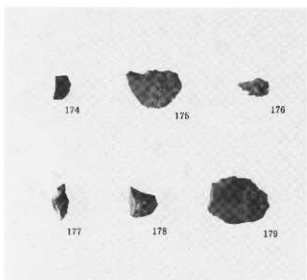
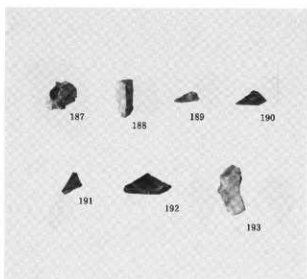
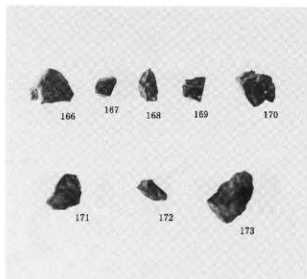
出土石器



出土石器



出土石器



出土石器



SI23



SI27



SI24



SI29



SI25



SI30



SI26



SI31



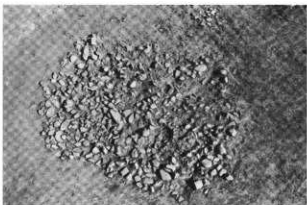
SI32



SI33



SI33



SI34



SI35



SI36



SI38



SI38



SC37



SC39



SC40



SC42



SC45



SC45



SC46



SC47



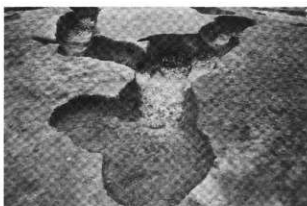
SP1



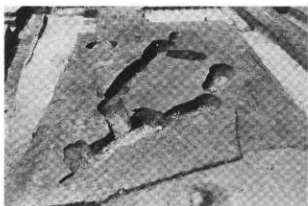
SP2



SP5&6



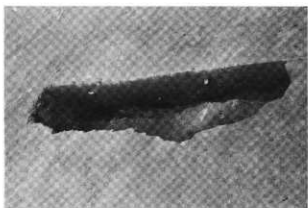
SP7



SP7



SP8



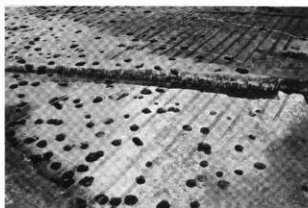
SP8



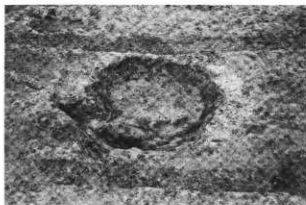
SP9



竪立柱體物跡



竪立柱體物跡



土坑



SR1~3



作業状況



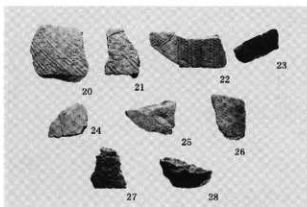
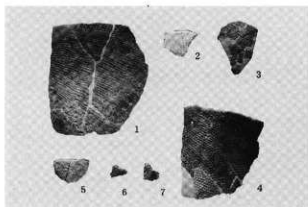
作業状況



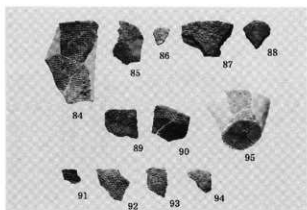
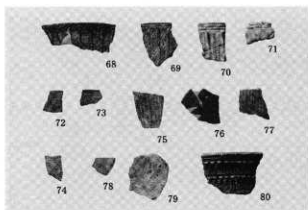
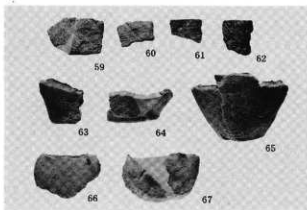
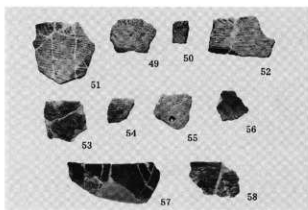
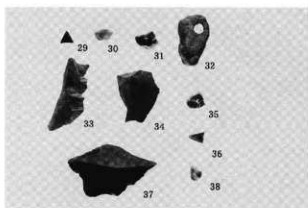
作業状況



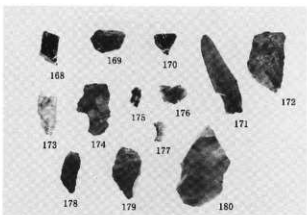
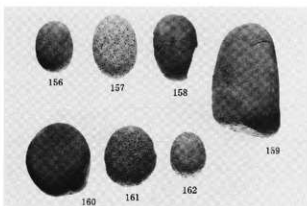
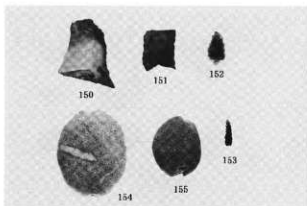
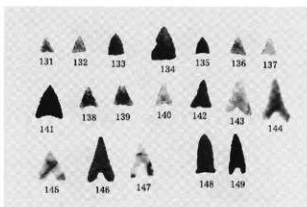
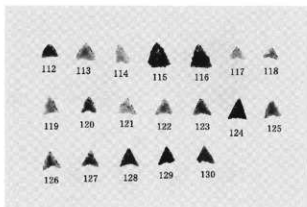
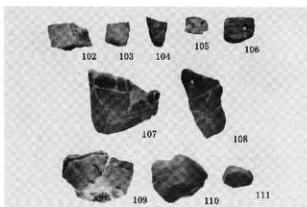
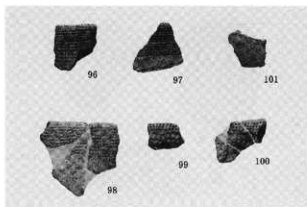
遺物出土状況



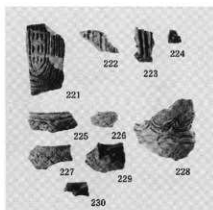
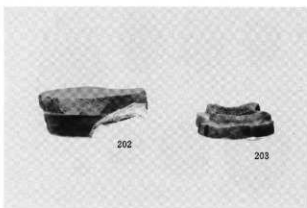
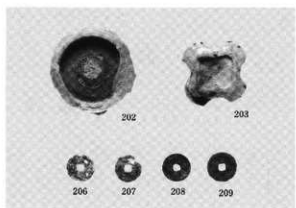
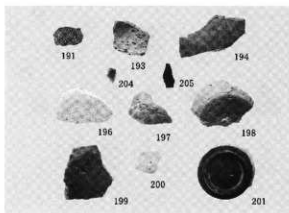
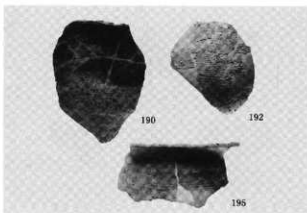
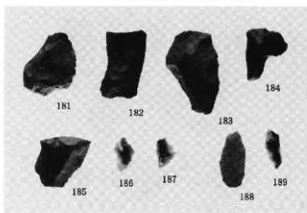
獨立柱體物碎



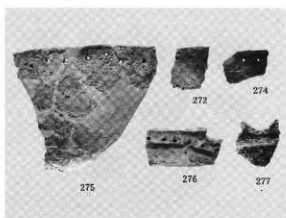
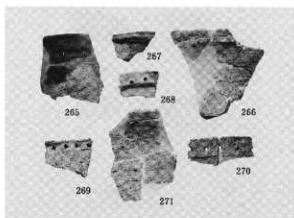
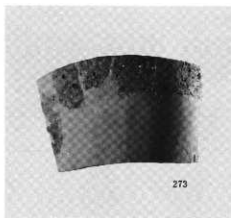
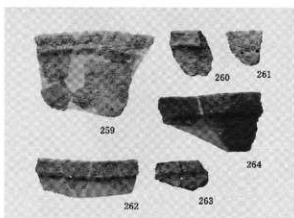
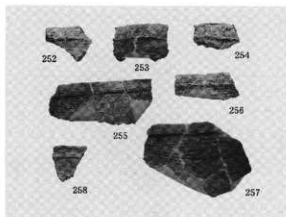
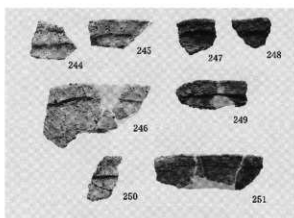
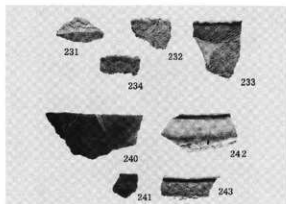
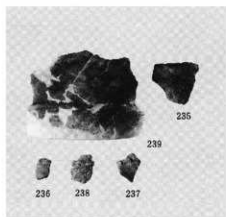
出土土器



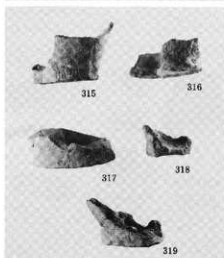
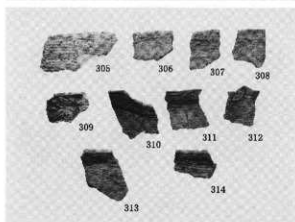
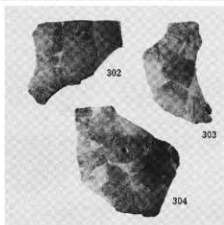
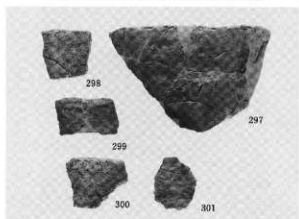
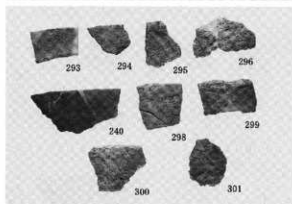
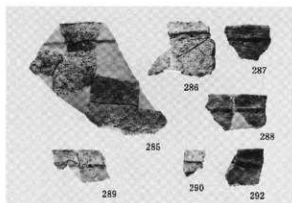
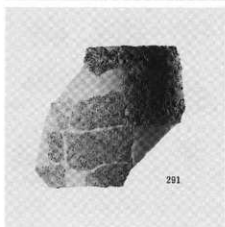
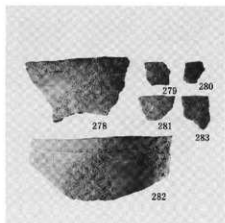
出土土器・石器



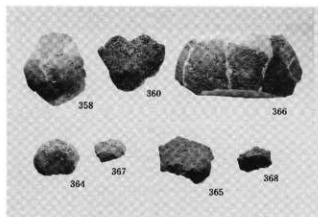
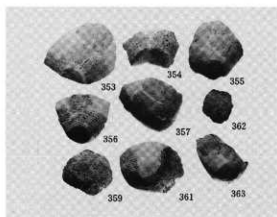
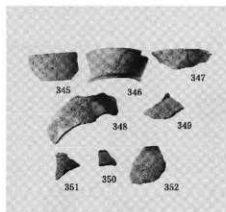
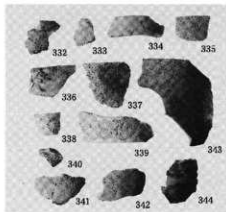
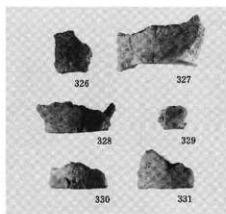
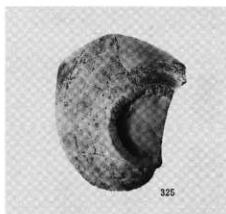
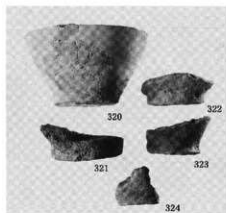
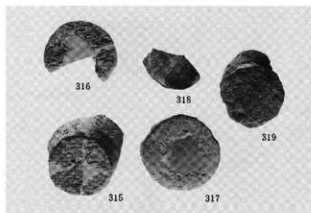
出土遺物



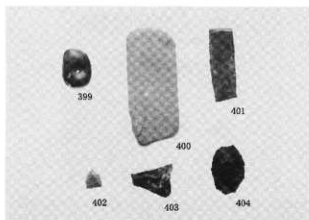
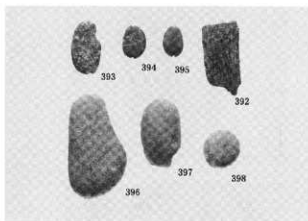
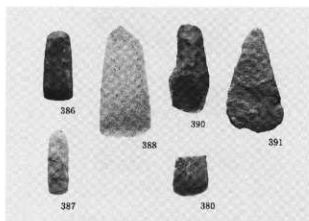
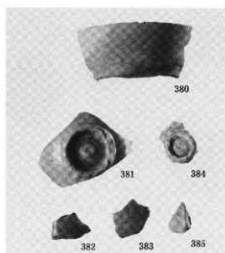
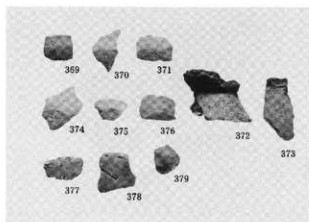
出土遺物



出土遺物



出土遺物



出土遺物

報告書抄録

ふりがな	かみのはるいせき					
書名	上ノ原遺跡					
副書名	東九州自動車道（西都～清武間）建設に伴う埋蔵文化財報告書					
シリーズ名	宮崎県埋蔵文化財センター発掘調査報告書XIV					
シリーズ番号	第58集					
編集者名	日高祐司・木本剛・谷口武範・山田洋一郎					
発行機関	宮崎県埋蔵文化財センター					
所在地	宮崎県宮崎郡佐土原町大字下那珂4019					
発行年月日	2002年3月					
ふりがな 所収遺跡名	ふりがな 所在地	北緯	東経	調査期間	調査面積 (㎡)	調査原因
かみのはるいせき 上ノ原遺跡	みやざけけんみやざけぐんさどわらちよう 宮崎県宮崎郡佐土原町 おおあざにしかみなかあざかみのはる 大字西上那珂字上ノ原 7106・7108・7109・ 7110・7112・7113・ 7114・7117・7118・ 7119・7120・7102・ 7137・7136・7134・ 7098・7140・2・7139-1 ・7139-2・7143・7133・ 7132・7130・7129-1・ 7129-3	32度 2分5	131度 23分45	平成8年9月 24日～平 成10年3月 26日	11,002㎡	東九州自動車道 (西都～清武間) に伴う発掘調査
収蔵遺跡名	種別	主な時代	主な遺構	主な遺物	特記事項	
上ノ原遺跡	散布地	旧石器時代 縄文時代早期	礫群7基・ブロック8ヶ所 土坑13基、集石遺構6基、 炉穴4基と2群、 竪穴状遺構	ナイフ形石器・剥片 尖頭器・三稜尖頭器 石鏃・縄文早期土器		

宮崎県埋蔵文化財センター発掘調査報告書第58集

上ノ原遺跡

(第Ⅱ分冊 縄文時代以降 図版編)

東九州自動車道建設(西部～清武間)に伴う埋蔵文化財発掘調査報告書XIV

発行年月日 平成14年3月

編集・発行 宮崎県埋蔵文化財センター

〒880-0212 宮崎県宮崎郡佐土原町大字下那珂4019番地
電話 0985-36-1171 (代表)

印刷 株式会社 宮崎南印刷

〒880-0911 宮崎県宮崎市田吉350-1
電話 0985-51-2745
