



8号墳土坑



馬具出土状況



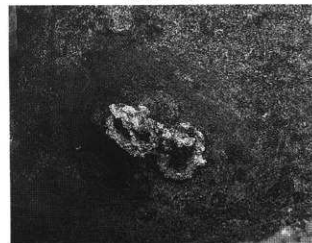
馬具出土状況



馬具出土状況



15号墳土坑検出状況



馬具出土状況



I-d区埋め戻し状況



II区遠景（東より）



II区遺構検出状況



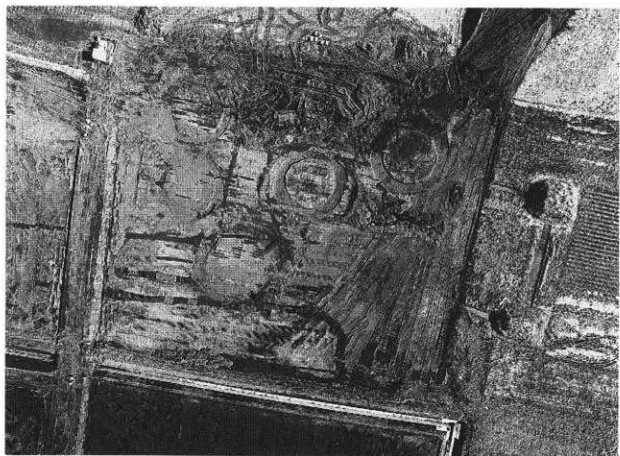
国指定114号墳墓石検出状況（東側）



国指定114号墳墓石検出状況（南側）



III-d区



III-b区



20号墳地下式横穴墓



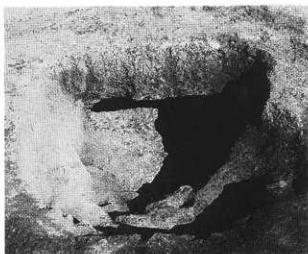
22号墳地下式横穴墓



Ⅲ-b区検出状況



33号墳地下式竖坑上部



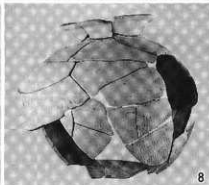
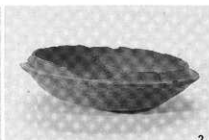
33号墳地下式横穴墓



Ⅳ-d区土坑



V区土坑





37



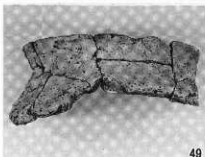
39



38



43



49



63



65



66



67



74



68



73



78



77



80



79



81



82



83



84



100



101



107



109



163



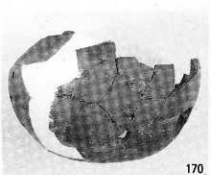
125



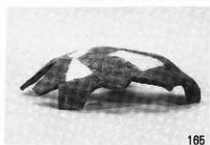
161



164



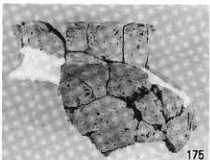
170



165



178



175



177



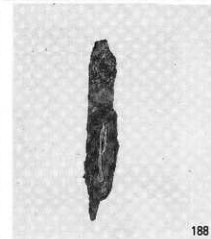
178



185



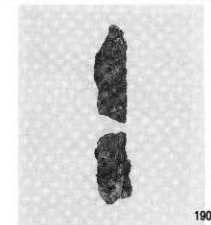
187



188



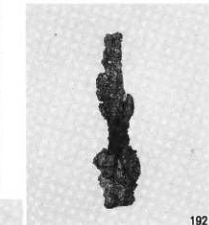
189



190



191



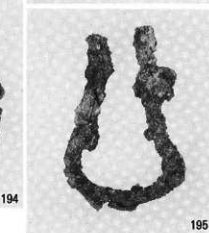
192



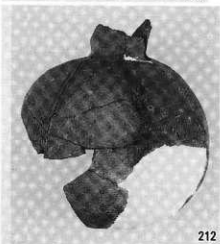
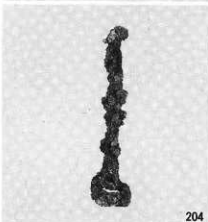
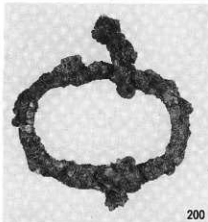
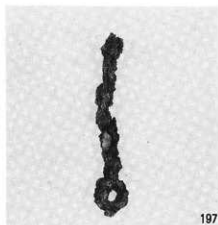
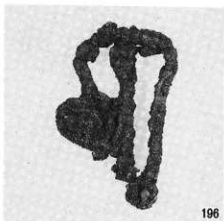
193

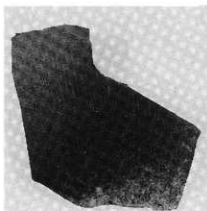


194



195





215



224



225



226



230



231



232



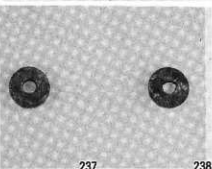
233



234



236



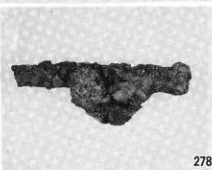
237



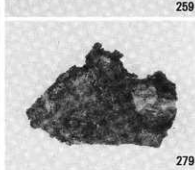
238



265



278



279



280



288



293



314



324



283



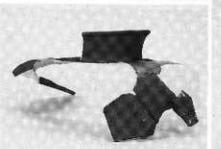
290



295



323



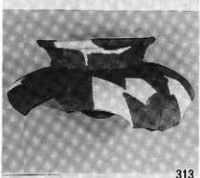
326



287



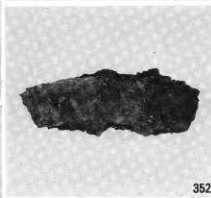
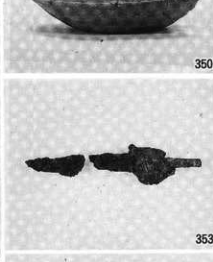
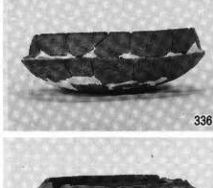
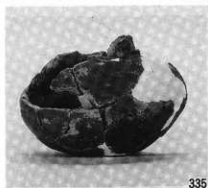
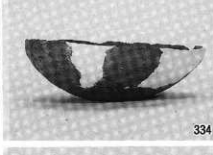
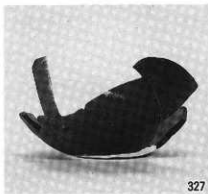
292

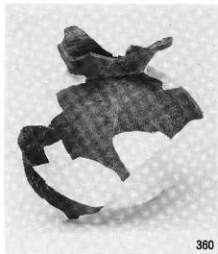


313



325





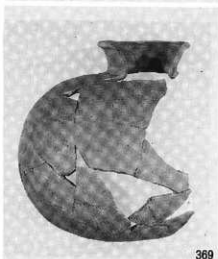
360



361



362



369



377



378



379



380



385



386



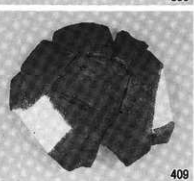
390



392



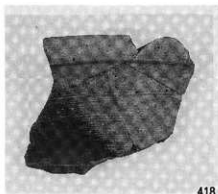
388



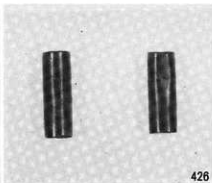
409



391



418



426



427



428



429



SA11-98



SA11-99



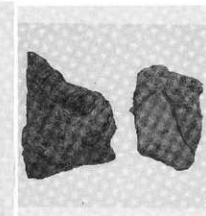
SA3-97



SA11-106



SC1-107



I SE5-113

県営農村基盤整備パイロット事業
に伴う埋蔵文化財発掘調査報告書

宮 崎 県
祇園原地区遺跡

平成8年3月

編 集 行 宮崎県教育委員会
〒880 宮崎市橋通東1丁目9-10

印 刷 有限会社 鉦脈社
〒880 宮崎市田代町263番地
