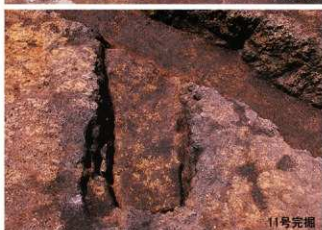




图版 72
弥生时代土坑墓 1~7号





图版 74
弥生时代土坑墓 13 ~ 20号



13号完掘



14号完掘



15号完掘



16号完掘



17号埋土断面



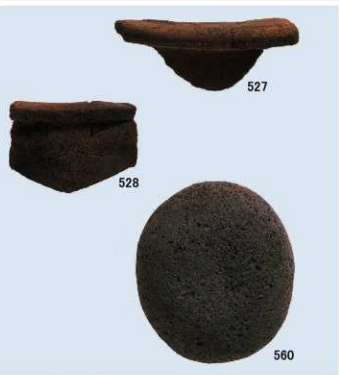
18号完掘



19号完掘



20号完掘





512



596



513



632



633



646



704



705



708



709



687



692



691



690





圖版 80
彌生時代竪穴住居跡19号出土遺物(2)





863



866



867



869

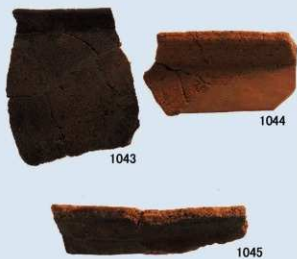


875



931







1049



1050



1071



1072



1053



1066



1078



1077



1076



1075



1084



1085



1095



1096



1114



1127



1110



1111



1108



1129



1131



1132



1133



1110



1109



1128











1198



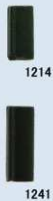
1205



1206



1200







1365



1372



1378



1379

1380



1377

1385



1375



1381

1382

1383



1384











1898



1905



1904



1909



1910



1911



1912



1922



1925







1972



1977



1979



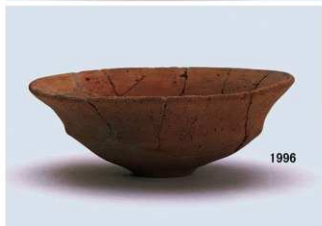
1980



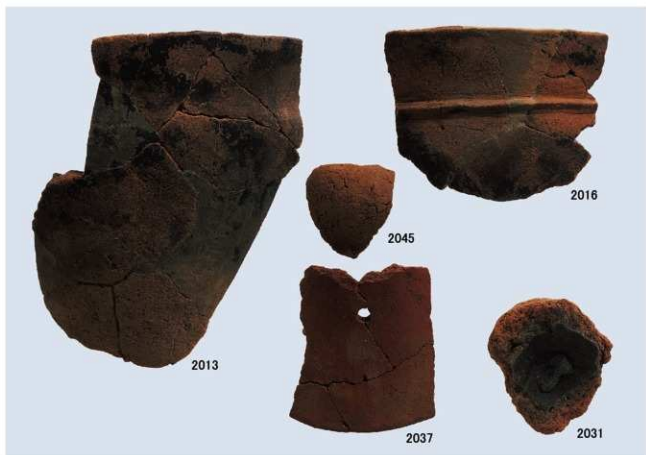
1975



1974











1576



1577



1580



1578



1579



1581



1582



1583



1584



1585



1586



1587



1588



1589



1590



1591



1592



1593



1594