



26地区 遺物集積の検出状況



26地区 遺物集積層のセクション



26地区 梁等出土状況



26地区 匙等出土状況



12地区 織物出土状況



13地区 樹皮巻き土器出土状況



集落Ⅰ期

撮影/寿福 進 (小学館提供)



集落Ⅱ期

撮影/寿福 進 (小学館提供)



集落Ⅲ期

撮影/寿福 滋 (小学館提供)

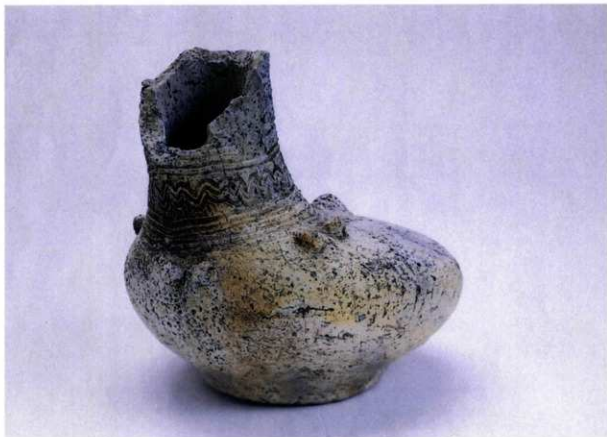


鹿と狩人が描かれた壺

撮影/寿福 滋 (小学館提供)



人面付土器



鳥形土器



管玉製作資料



勾玉



祭祀具 魚形木製品

撮影/寿福 滋 (小学館提供)



並列して出土した2本の竪杵と138の加飾部分

撮影/寿福 滋 (小学館提供)



祭祀具 鳥形木製品

撮影/寿福 滋 (小学館提供)



祭祀具 武器形木製品

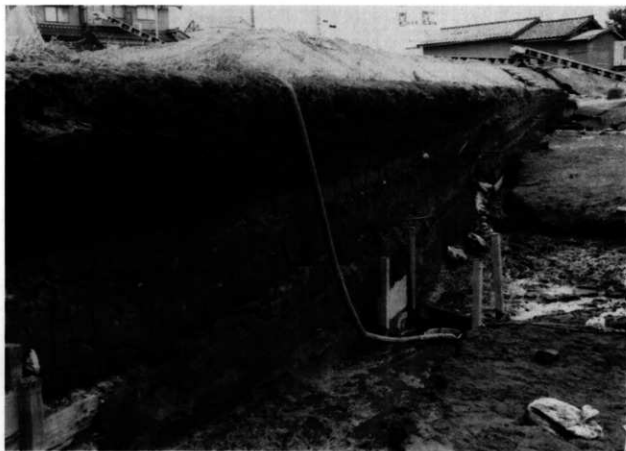
撮影/寿福 滋 (小学館提供)



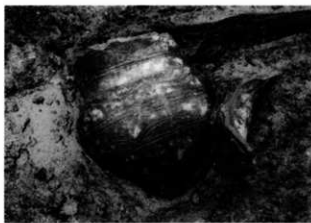
〈1947（昭和22）年〉



12地区 遺物集積の検出状況



26地区 本ベルト1ラインセクション



〈沈線文系土器 (上面出土)〉



〈木製容器〉



〈鉄 未成品〉



〈鉄 未成品 (下底面出土)〉

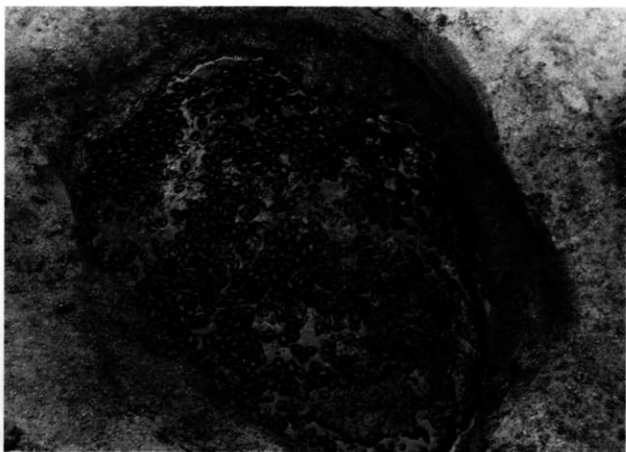
26地区 集積遺物の出土状況 (xiC層)



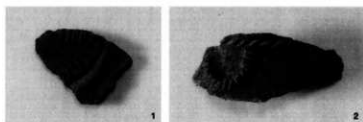
26地区 集積遺物取り上げ後の本道検出状況



26地区 貝層



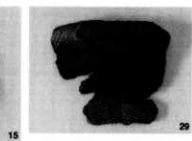
13地区 貯藏穴 (SK04)



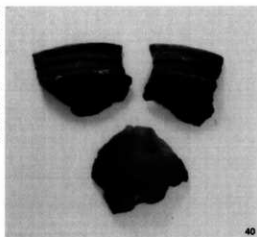
中期後葉の土器



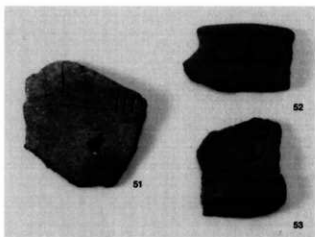
後期前葉～中葉の土器



後期中葉の土器



40



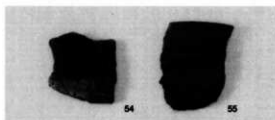
51

52

53



35



54

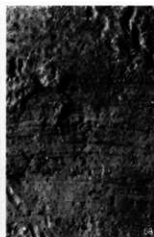
55

後期後葉の土器

後期末～晩期前葉の土器



57



58



59



60



61



62



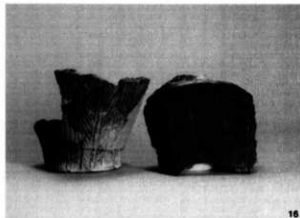
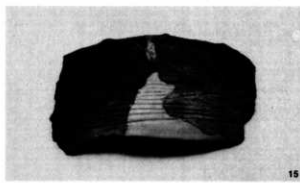
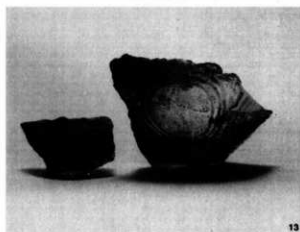
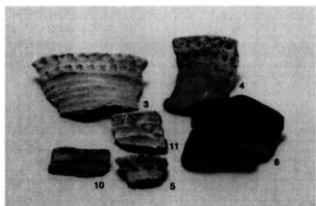
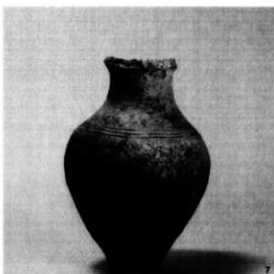
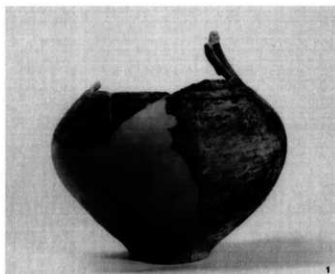
72



73

〈底部網代圧痕〉

粗製土器の縄文

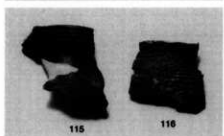




19



111



115

118



77



61



41

43

42

xiv~xvi層 出土土器



135



161



140

141

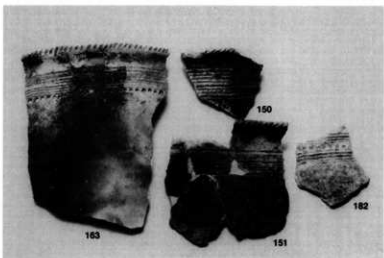
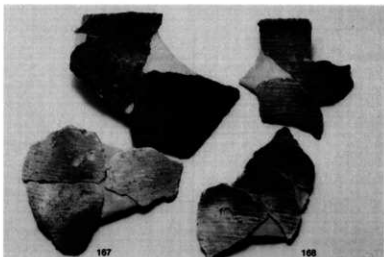
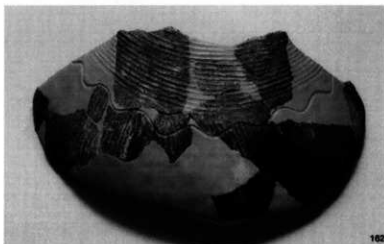
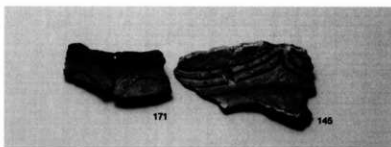
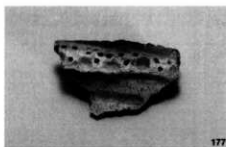


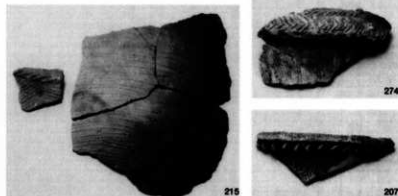
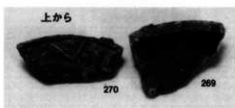
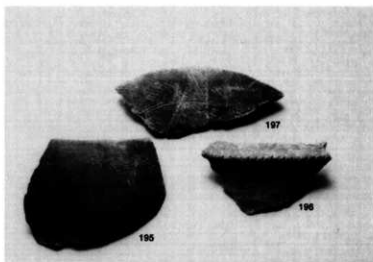
144



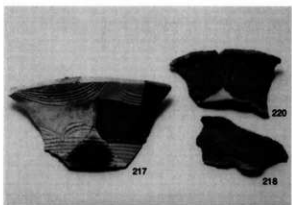
142

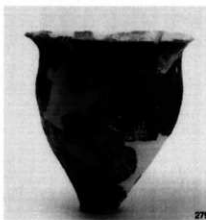
xiiC層 出土土器





xiC層 出土土器







254



253



256



255



258



257

xiC層 出土土器



290



287



288



292



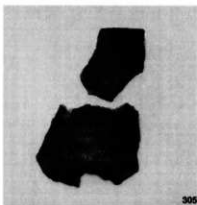
293



上から

293

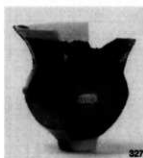
xi層 出土土器



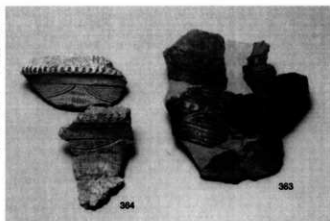
xi層 出土土器



xiA層 出土土器



xA層 出土土器



ix1層 出土土器



viii~ix1A層 出土土器



390



398



392



398



395



398



399

viii1A~ix1A層 出土土器



403



402



401

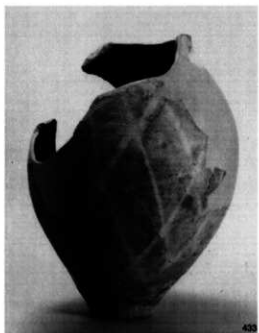
vii・viii層 出土土器



VI A層 出土土器

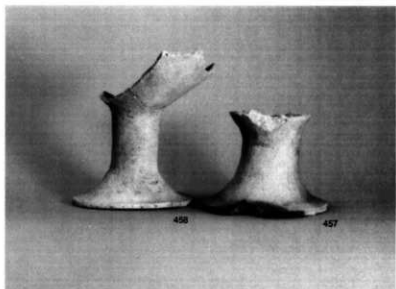
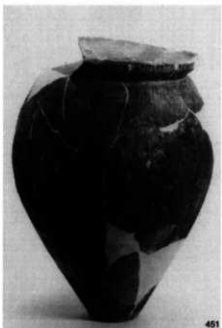


viii1C層 出土土器



vii2C層 出土土器





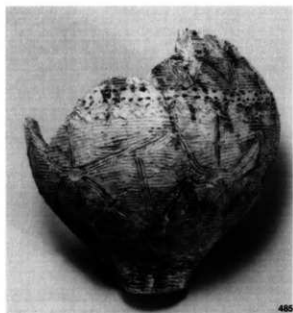
viC層 出土土器



vC層 出土資料



xS層 出土土器



485



481



504



502



495



481 拡大



487



492



484



499



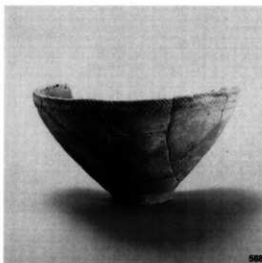
496

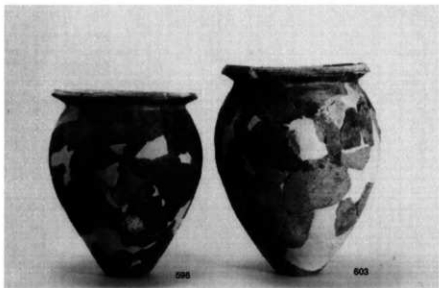
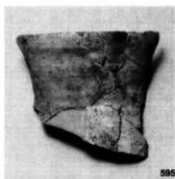
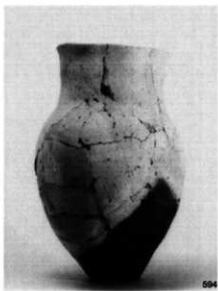
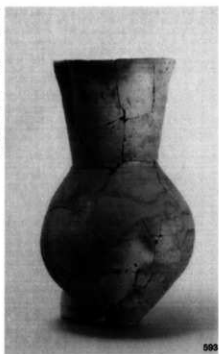


493

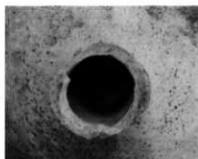


vC~ix層 出土土器





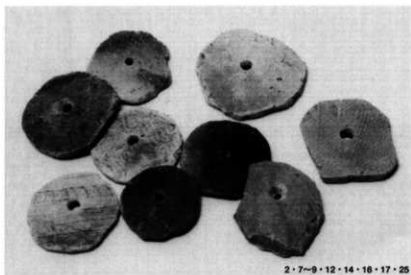
iv層 出土土器



607の坏と脚部の接合状況







〈Ⅰ類 孔が貫通するもの〉

2・7・9・12・14・16・17・25

I-a 側面に研磨がみられるもの

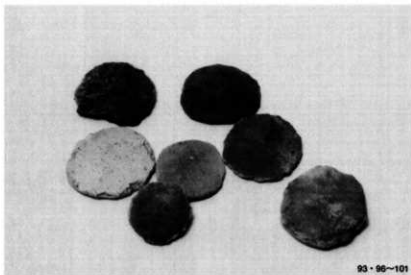


16

Ⅱ2-b 片方のみに穿った痕跡があり、研磨のないもの



64



〈Ⅲ類 孔がないもの〉

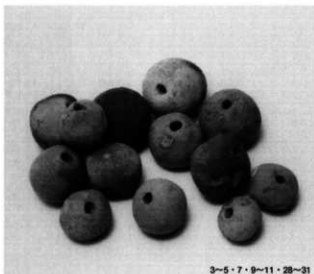
93・96~101



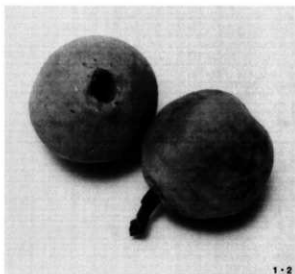
63・64・69

〈Ⅱ類 穿った痕跡のあるもの〉

土製加工円盤



3・5・7・9~11・28~31



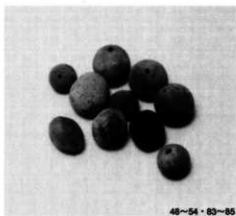
1・2

Ⅰ類 有孔土玉



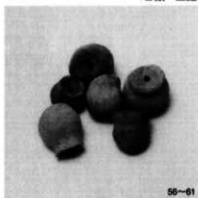
〈Ⅱ類 土鍾〉

36~42



〈Ⅱ類 土玉〉

48~54・83~85



〈Ⅳ類〉

50~61



60



85



〈壺〉

3~6・9~11・70



〈高坏・台付鉢〉



〈鉢〉

17・19・20・20~27



〈甕〉

14~16・76

ミニチュア土器



1~13



1



2

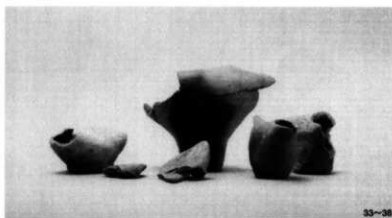


4

〈分銅形土製品〉



10



33~38



35・36

〈鳥形土器〉



34

その他の土製品



〈人面付土器〉



〈人形土製品〉



〈土製勾玉〉



16



31



23



25



24



26



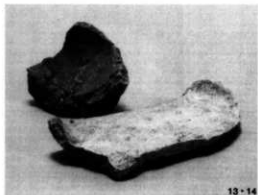
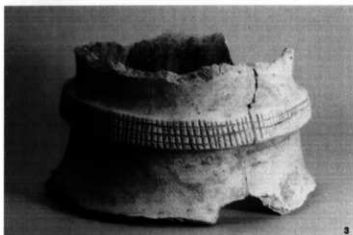
27

〈筒鐎形土製品〉



30

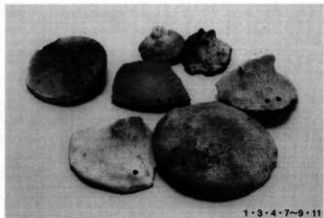
その他の土製品



異形土器

10~12

13・14



1・3・4・7・9・11



2・5・6・10

蓋形土器



1



上か5

1

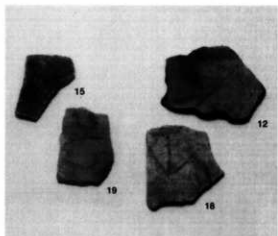
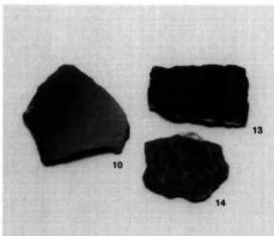
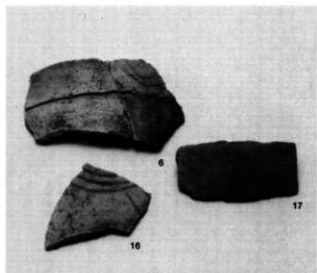
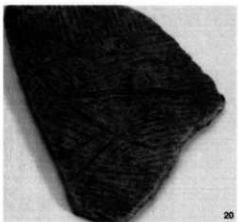
異形土器 (双口壺)



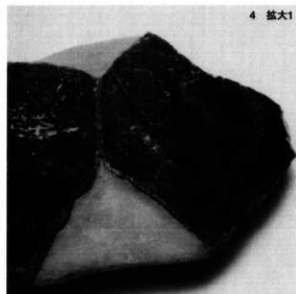
2

3

異形土器 (耳付土器)



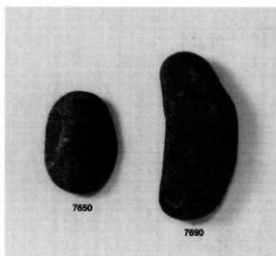
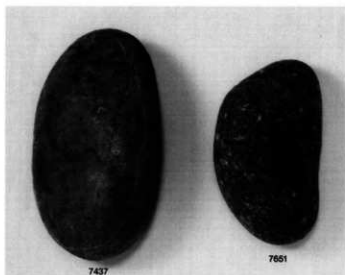
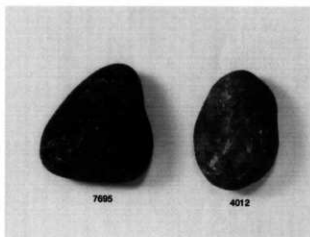
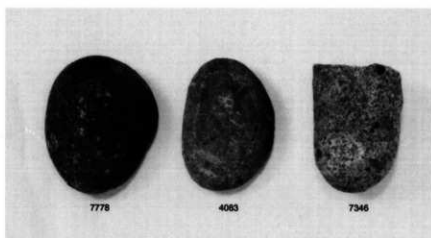
絵画土器



絵面土器

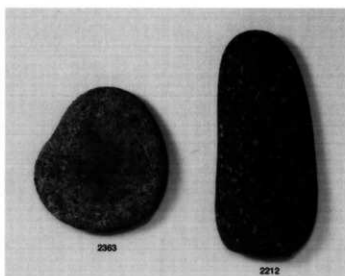
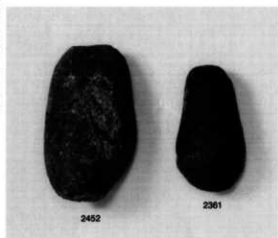


焼成粘土塊

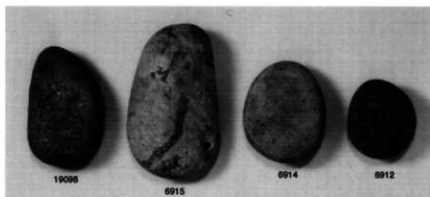
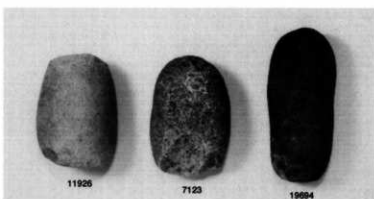


礫石器

番号はデータベースの固有番号
(写真図版60まで同様)



礫石器



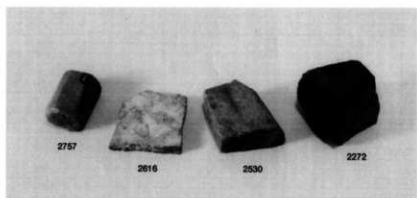
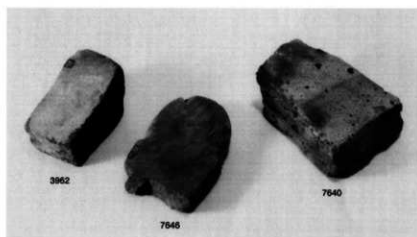
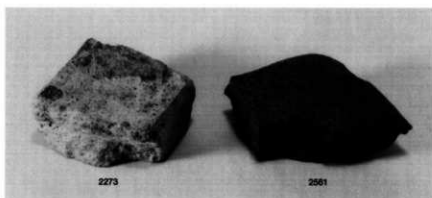
礮石器



石皿



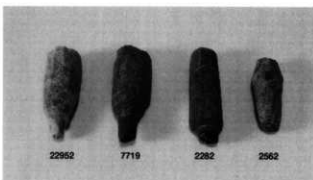
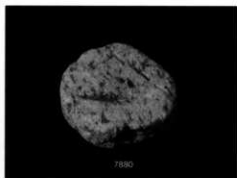
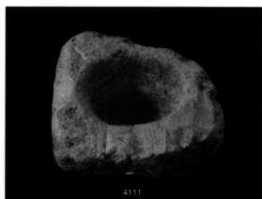
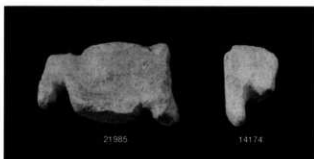
7322
大型砥石



砥石

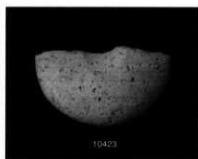
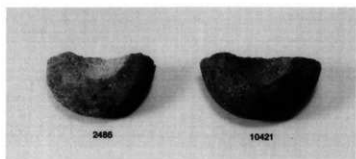
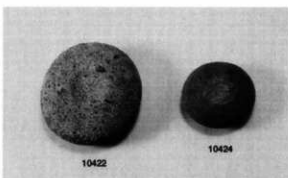


〈砥面の拡大〉

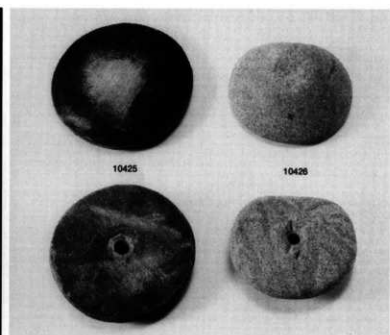
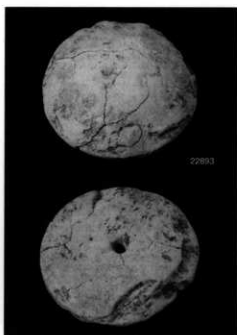


穿孔砥石

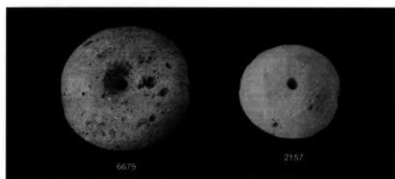
研磨砥石



凹石



有孔円盤状石器



有孔円盤状石器



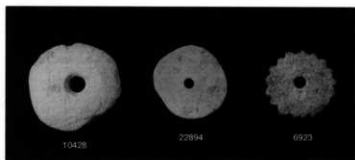
環状石斧



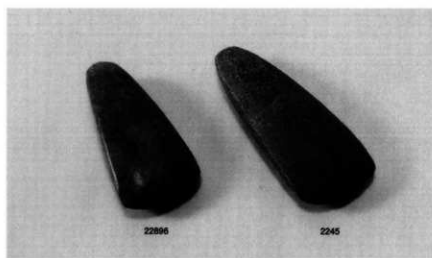
多頭石斧



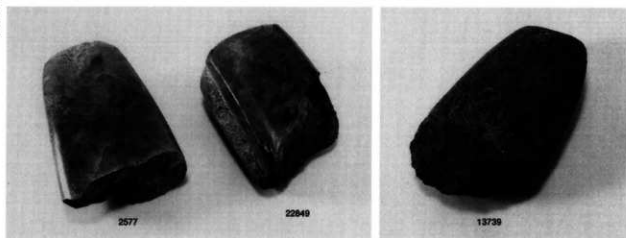
環石



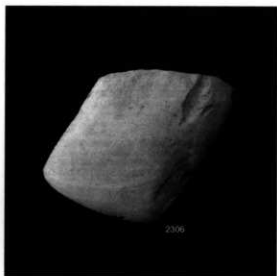
石製加工円盤



〈縄文時代〉



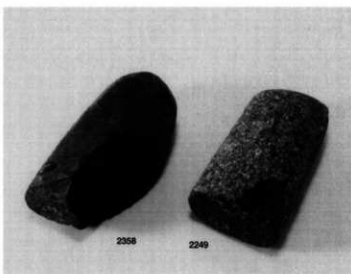
定角式石斧



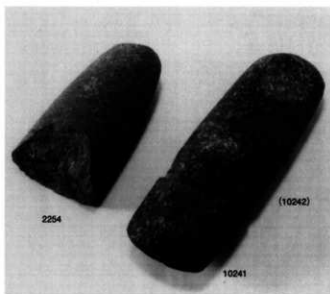
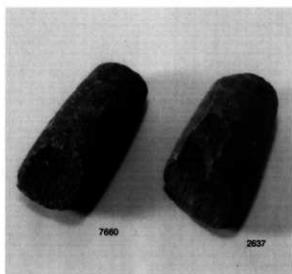
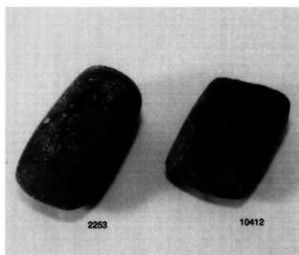
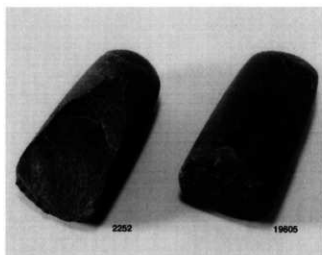
扁平両刃石斧



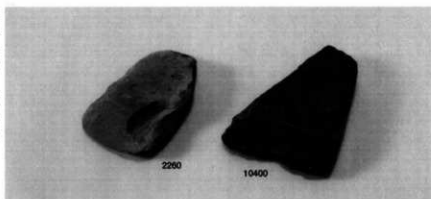
乳棒状石斧



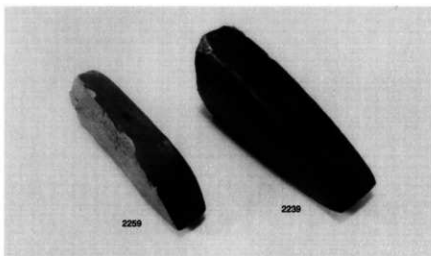
〈未成品〉



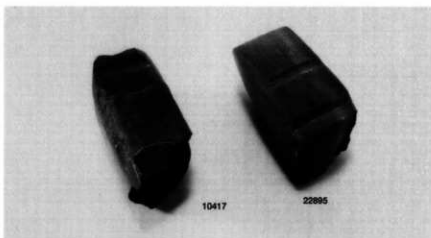
大型蛤刃石斧



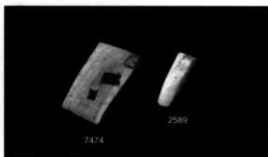
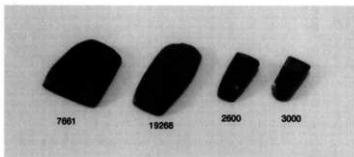
扁平片刃石斧



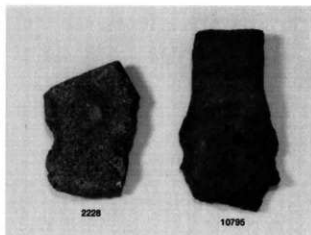
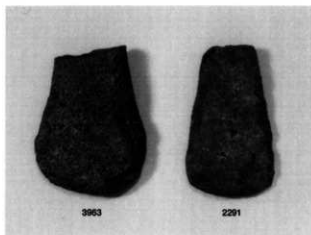
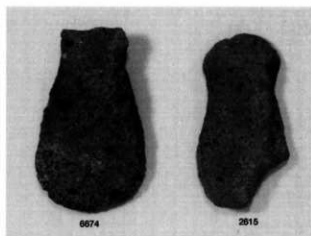
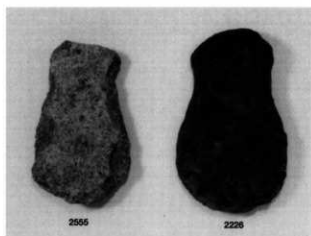
柱状片刃石斧



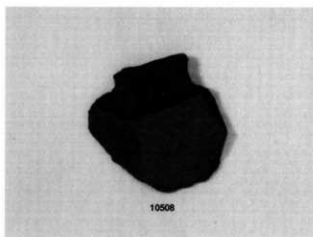
挟入柱状片刃石斧
(挟入部の面)



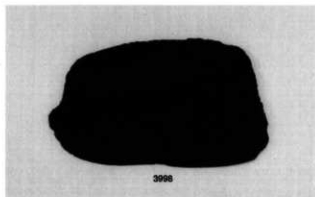
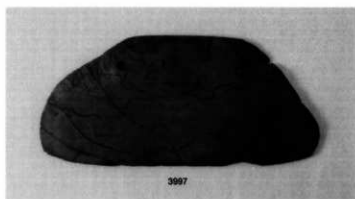
小型片刃石斧



石 鍬



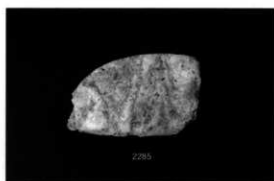
有肩石斧



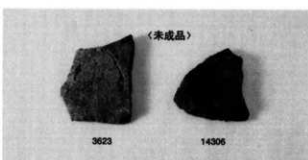
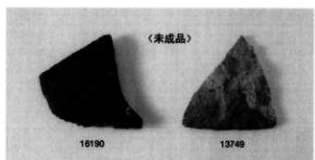
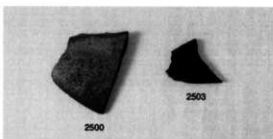
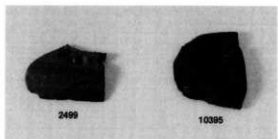
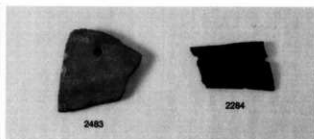
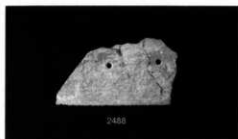
大型石包丁



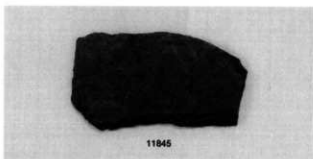
(接合部の拡大)



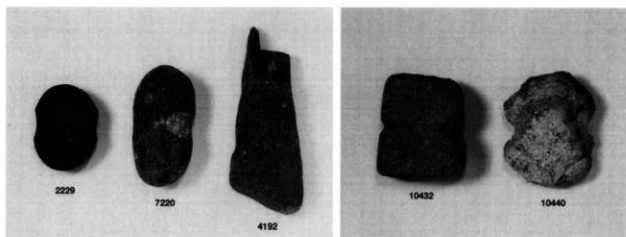
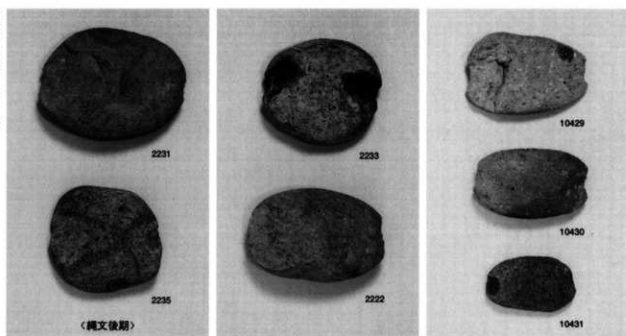
大型石包丁



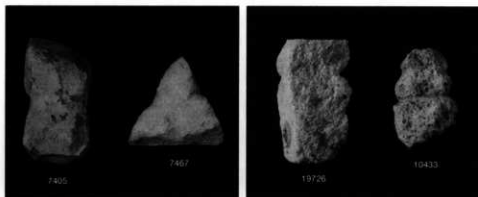
石包丁



石鎌



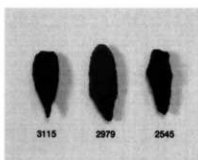
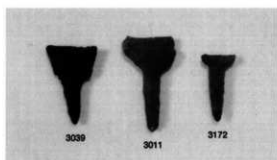
礫を素材とする石錘



剥片・礫片を素材とする石錘

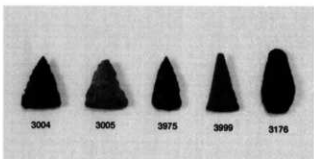
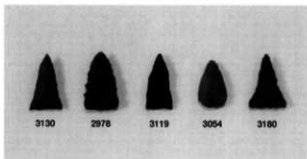
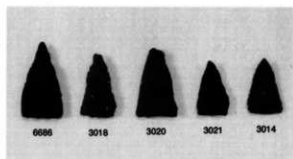
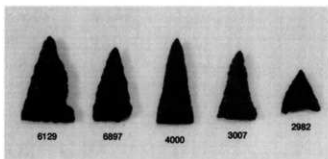
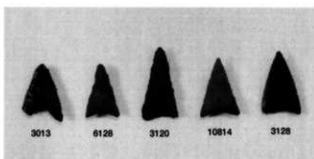
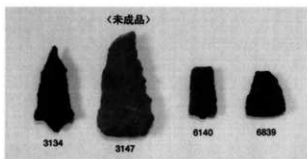
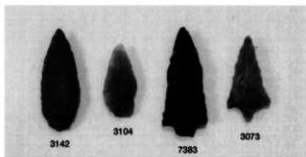
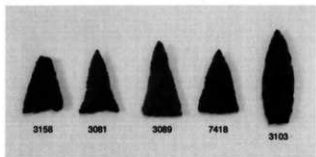


有溝石錘

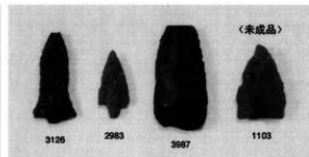
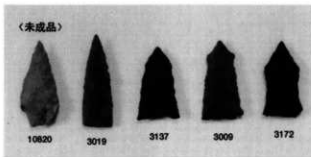
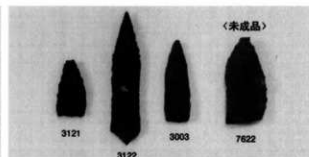
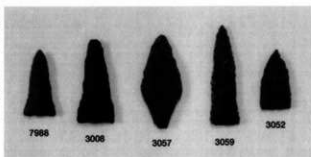
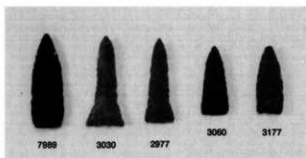
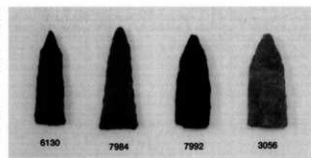


石錐

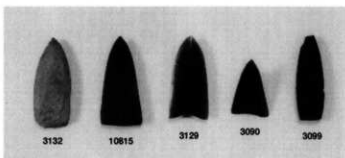
〈碧玉穿孔具〉



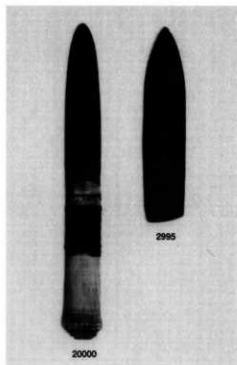
打製石鏃



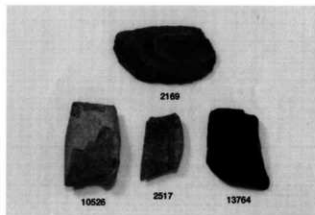
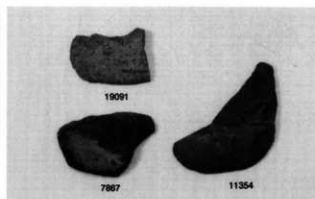
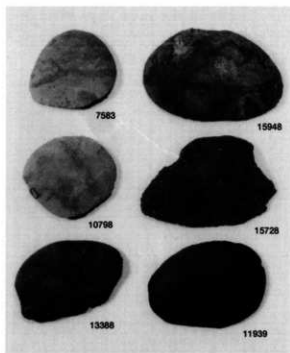
打製石鏃



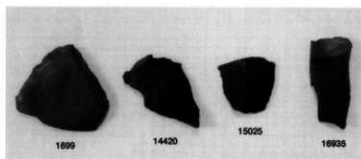
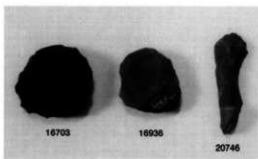
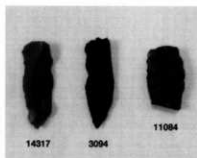
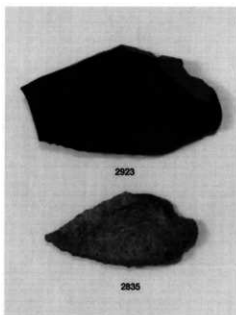
磨製石鏃



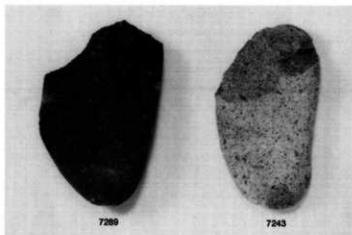
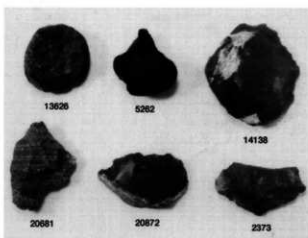
磨製石剣



磯端片石器



その他の剥片石器

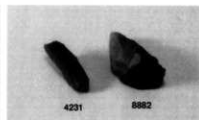
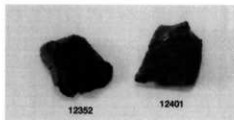
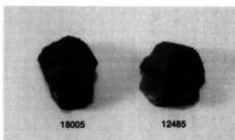
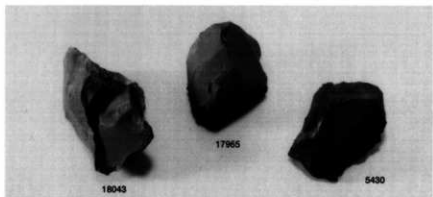
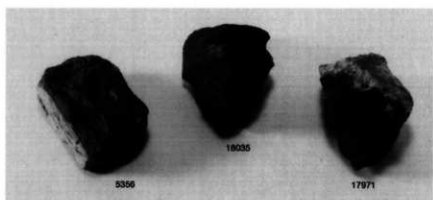


石核

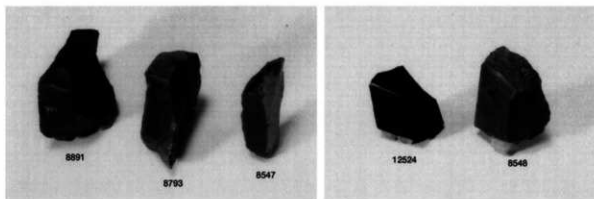


石製品

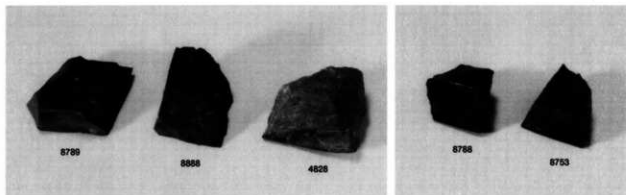




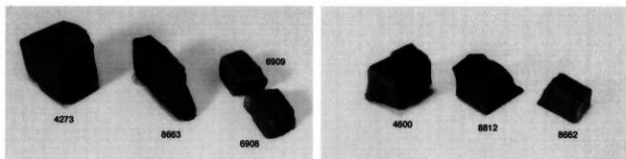
碧玉 素材石核



〈タテ分割〉

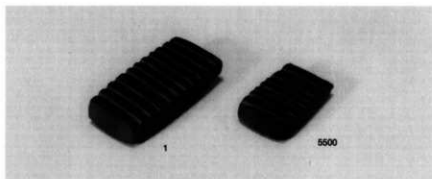


〈ヨコ分割〉

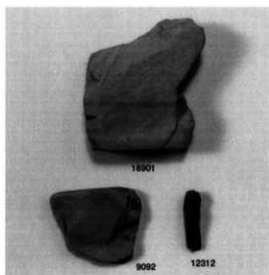


〈大型品の分割〉

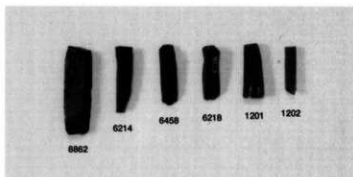
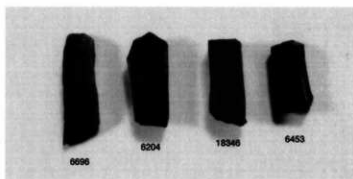
〈小型品の分割〉



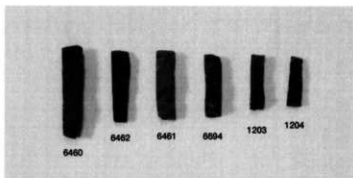
〈全面研磨調整した板状未成品〉
形割工程



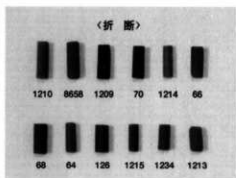
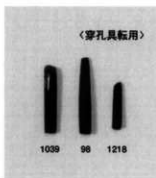
〈奈具岡第1技法類似資料〉



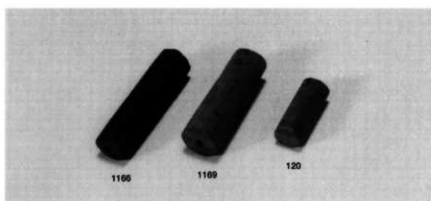
形割工程



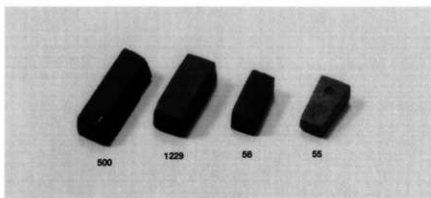
側面剥離工程



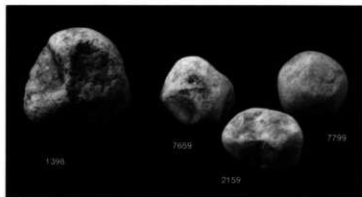
研磨工程



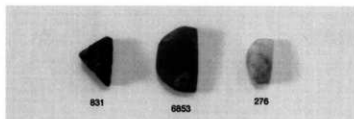
〈大型管玉未成品〉
研磨～穿孔工程



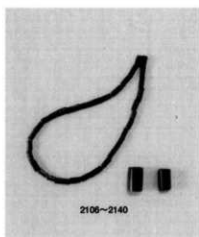
〈角玉未成品〉
研磨～穿孔工程



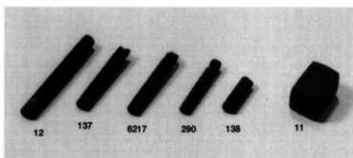
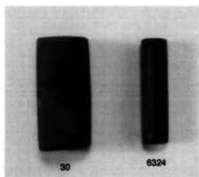
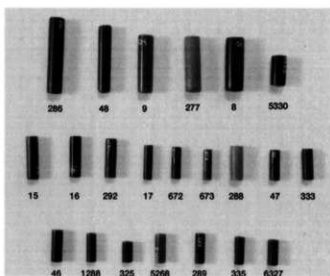
硬玉 素材石核



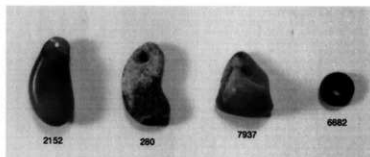
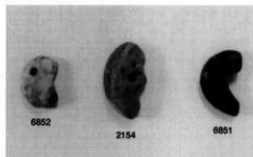
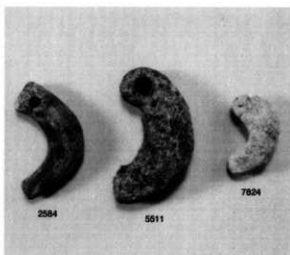
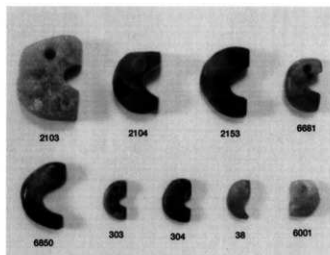
〈勾玉未成品〉
形割～研磨工程



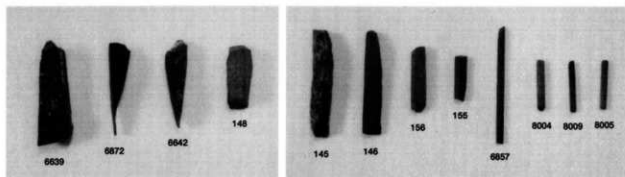
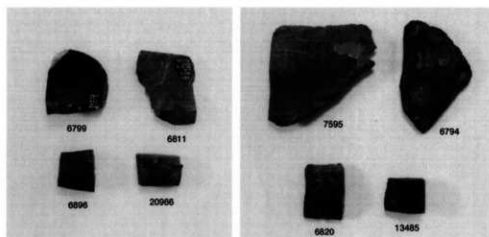
〈17地区 方形周溝墓主体部出土〉



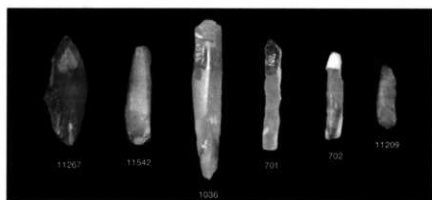
管玉類・角玉



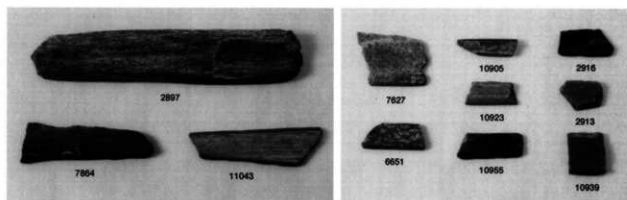
勾玉類・垂玉類・その他



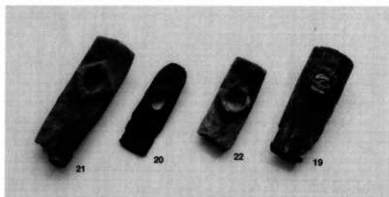
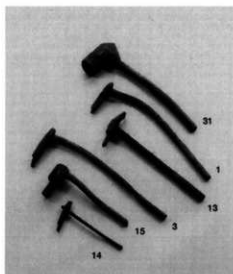
磨製石針 (製作資料と成品)



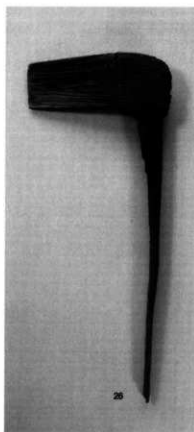
打製石針 (素材剥片と成品)



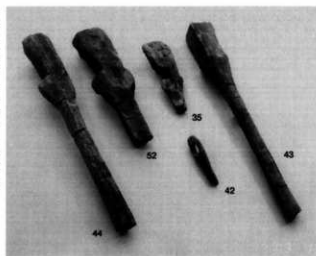
石 鋸



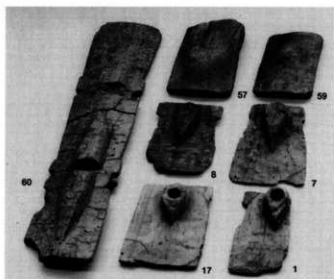
片刃石斧柄（・斧台）



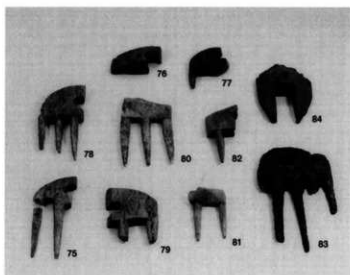
袋状鉄斧柄



大型蛤刀石斧柄



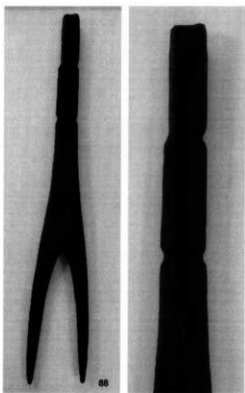
直柄広鎌・狭鎌・横鎌



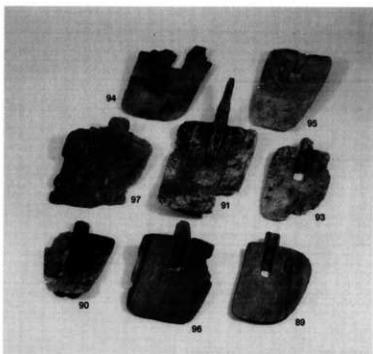
直柄又鎌



曲柄平鎌・一木鎌

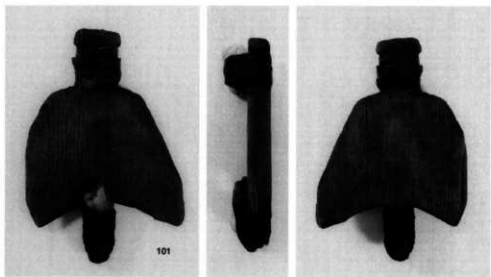
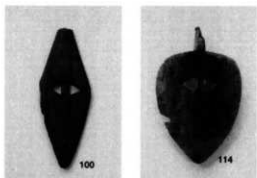
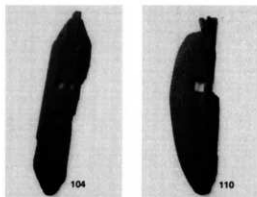
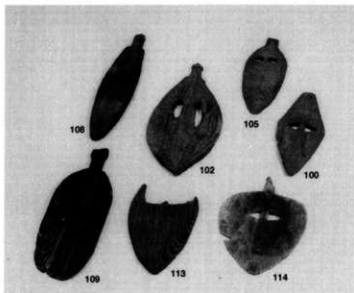
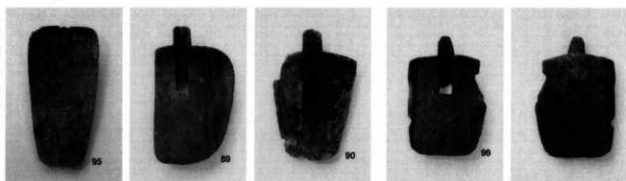


曲柄又鎌

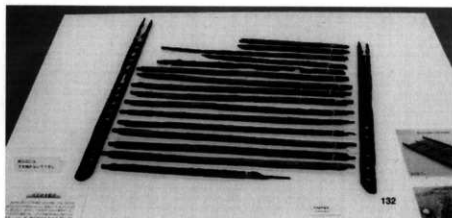
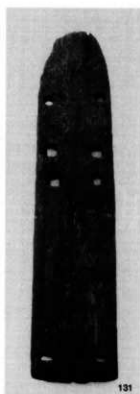
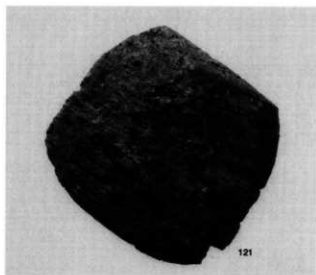
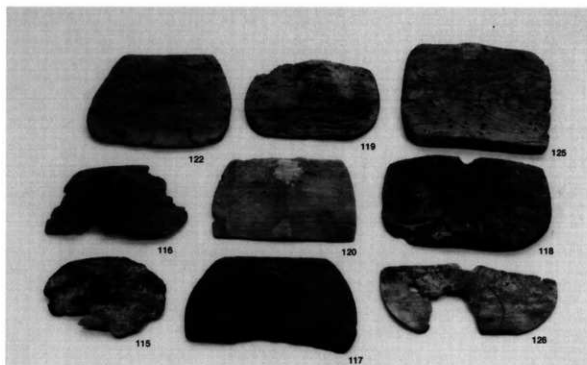


ほぞ結合鎌

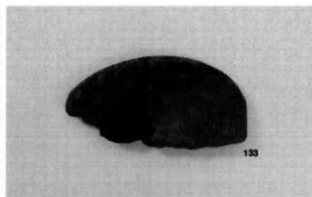




紐結合鋤



「神組み材」の展示状況



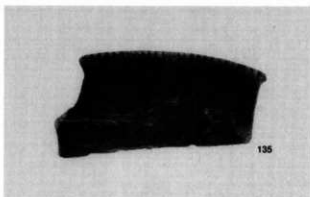
133



136

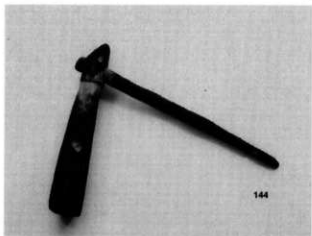


137



135

木包丁



144



147



148

横杵

横槌



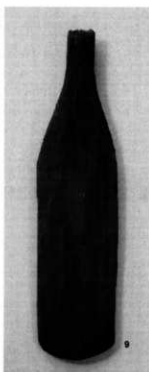
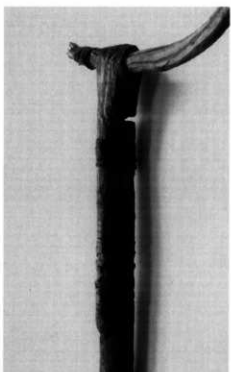
57



56

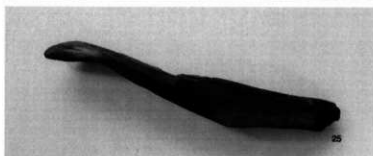
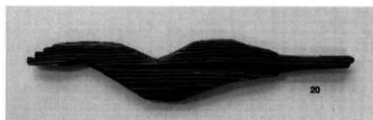
鍔(こて)

木針

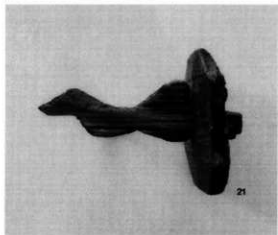
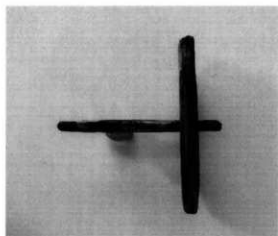


夕毛網杵

樽



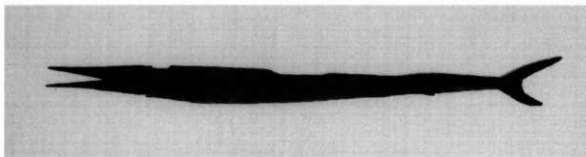
鳥形木製品



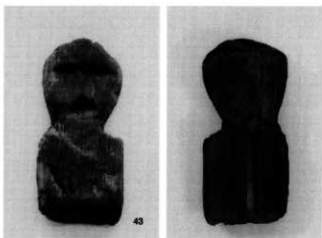
鳥形木製品



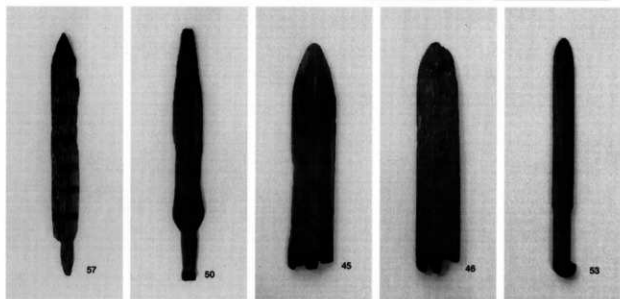
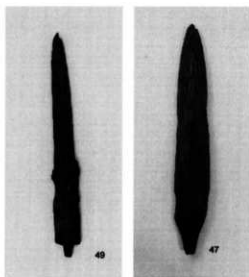
魚形木製品



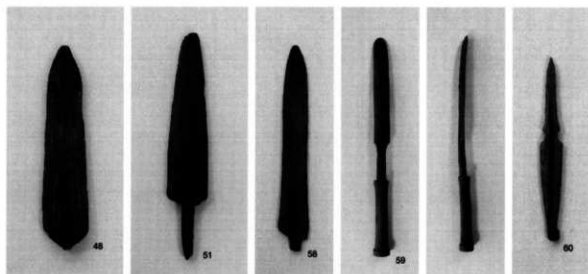
魚形木製品



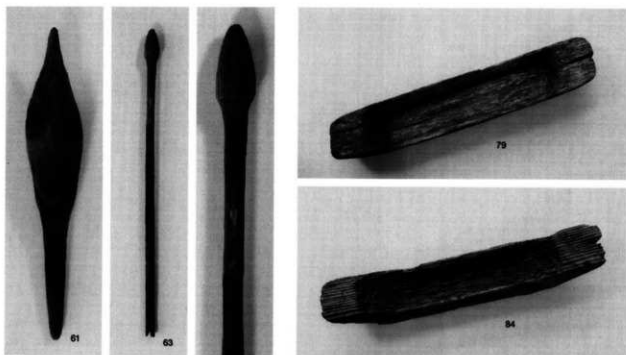
人形 (木偶)



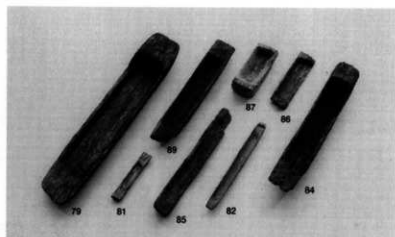
武器形木製品



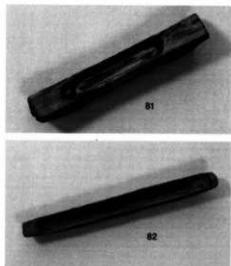
武器形木製品

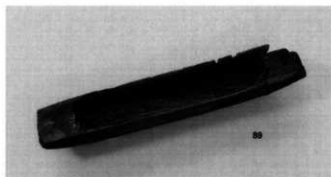


木鏃

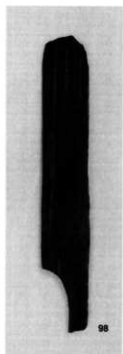
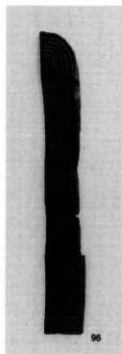
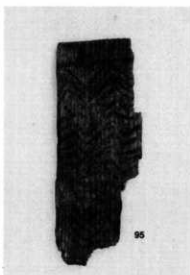
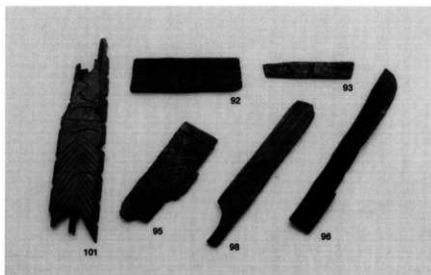


舟形木製品

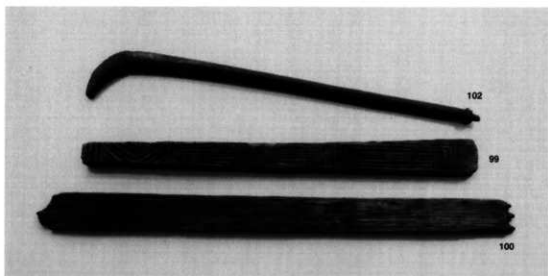
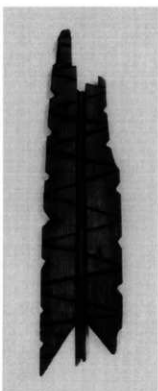




舟形木製品



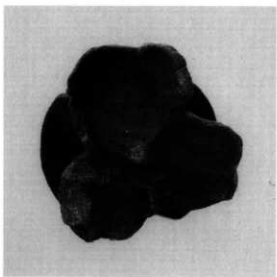
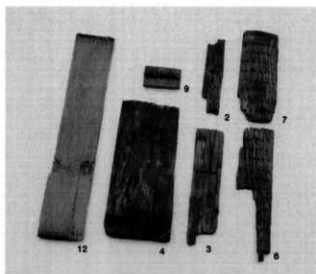
線刻板

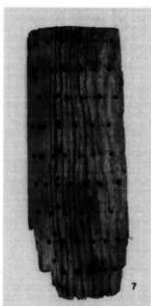
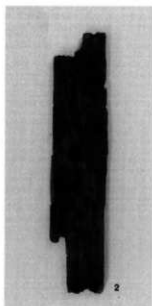
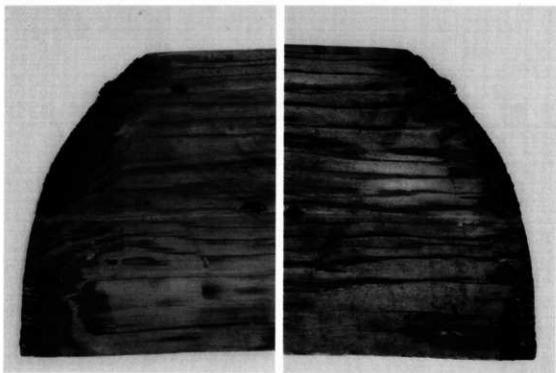


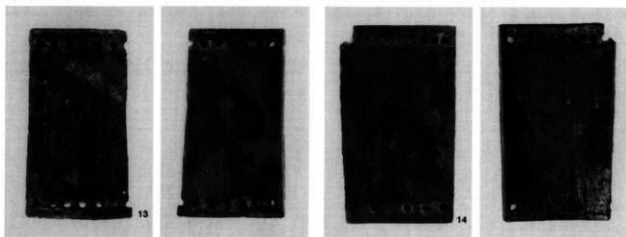
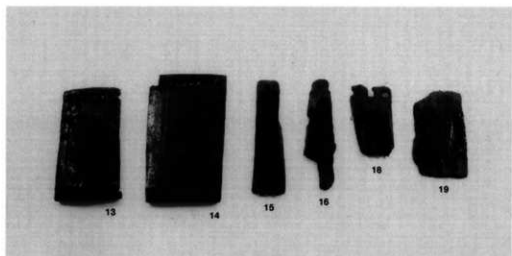
戈の柄・線刻板・琴の天板



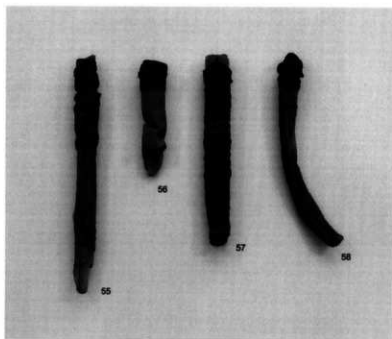
琴の天板（線刻部分）



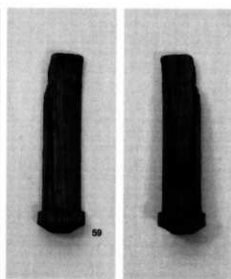




木 甲



矢 柄



刺 把

