



幸町遺跡全景（北東から）



SE09（縦板組横棧留井戸）



SE11 (結桶積井戸)



SK03 漆器椀出土状況

写真図版





調査前全景



表土除去



SK01 遺構掘下状況



SK01 完掘全景



SK03 遺物出土状況



SK03 曲物出土状況



SD01 遺物出土状況



SD01 完掘全景



SD02 遺物出土状況



SD02 完掘全景



SE01



SE02



SE03



SE04



SE05



SE06



SE07



SE08



SE09



SE09 井戸側



SE10



SE11



SE12



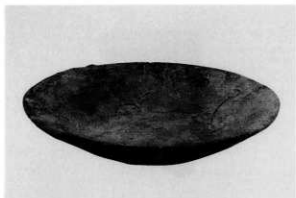
調査後全景



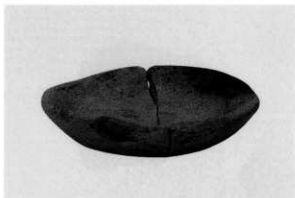
23-1 土師器皿



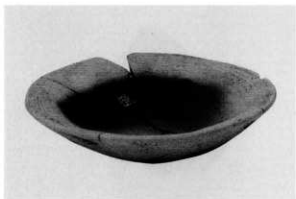
23-6 土師器皿



23-30 土師器皿



24-35 土師器皿



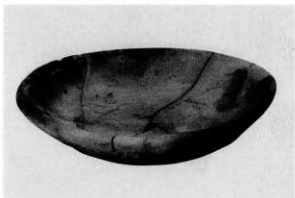
24-58 土師器皿



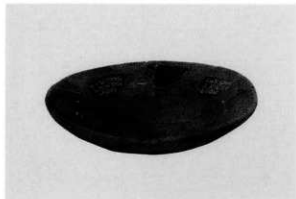
25-121 土師器皿



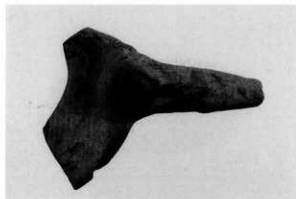
26-132 土師器皿



26-140 土師器皿



27-181 土師器皿



29-273 土師器皿



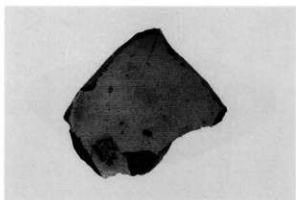
29-274 瓦質土器



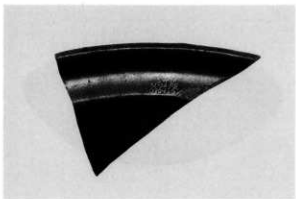
29-275 瓦質土器



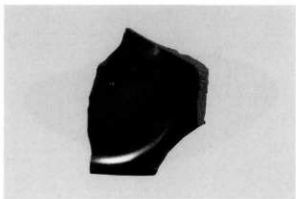
30-2 白磁



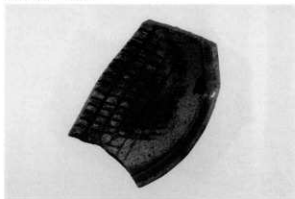
30-3 白磁



30-15 青磁



30-16 青磁



31-26 瀬戸美濃



31-31 瀬戸美濃



31-40 瀬戸美濃



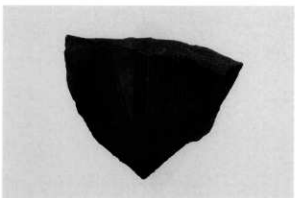
31-41 瀬戸美濃



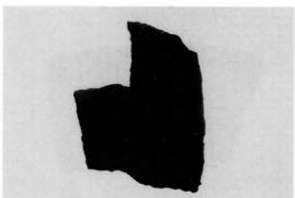
32-4 越前



32-12 越前



32-16 越前



32-17 越前



33-21 越前



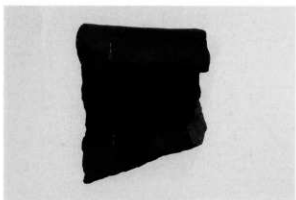
33-23 越前



33-24 越前



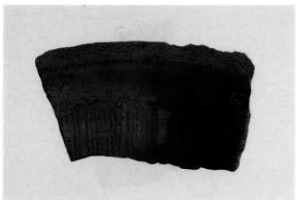
33-25 越前



33-31 珠洲



34-35 珠洲



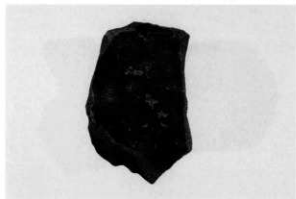
34-45 珠洲



34-48 珠洲



35-14 円形陶片



36-51 円形陶片



37-2 砥石



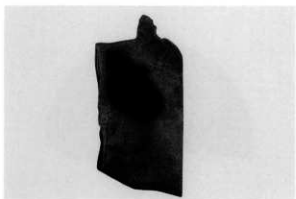
37-11 砥石



38-18 砥石



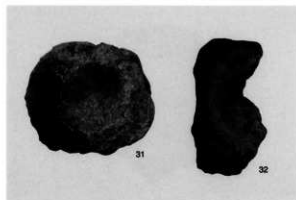
39-23 砥石



39-29 砥石



39-30 砥



39-31・32 加工礫



39-33 加工礫



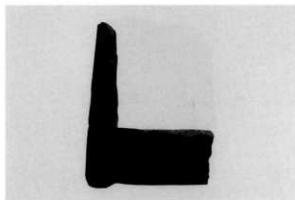
39-34 加工礫



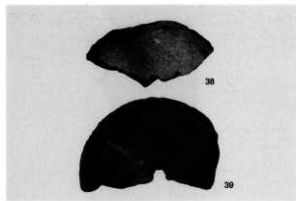
39-35 加工礫



40-36 石鉢



40-37 行火



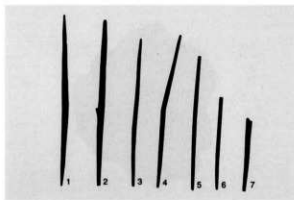
40-38・39 石臼



40-40 石臼



40-41 石白



41-1~7 箸



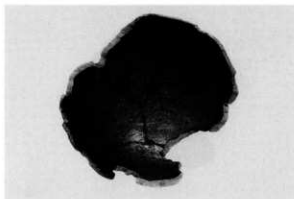
41-8 円形板



41-9 漆器椀



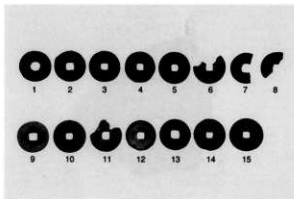
41-10 漆器椀



41-11 漆器椀



42-12 曲物



43-1~15 銭貨



46-1 梘形鐵渣滓 (大)



46-2 梘形鐵渣滓 (中)



46-3 梘形鐵渣滓 (中)



46-4 梘形鐵渣滓 (小)



46-5 梘形鐵渣滓 (小)



46-6 梘形鐵渣滓 (小)



46-7 梘形鐵渣滓 (極小)



46-8 梘形鐵渣滓 (極小)



47-9 椀形鍛冶滓 (大・含鉄)



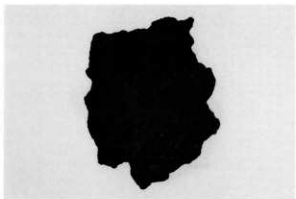
47-10 椀形鍛冶滓 (特大・含鉄)



47-11 椀形鍛冶滓 (大・含鉄)



47-12 椀形鍛冶滓 (中・含鉄)



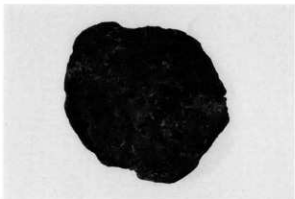
47-13 椀形鍛冶滓 (中・含鉄)



47-14 羽口 (鍛冶)



48-15 椀形鍛冶滓 (特大・4段・羽口付き)



48-16 椀形鍛冶滓 (特大)



48-17 椀形鍛冶滓 (大)



48-18 椀形鍛冶滓 (中)



49-19 椀形鍛冶滓 (中)



49-20 椀形鍛冶滓 (小)



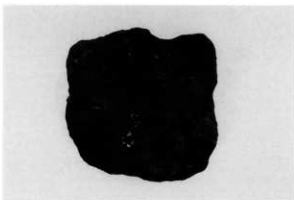
49-21 椀形鍛冶滓 (小)



49-22 椀形鍛冶滓 (極小)



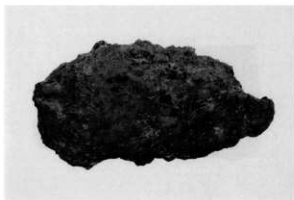
49-23 椀形鍛冶滓 (極小)



49-24 椀形鍛冶滓 (小・含鉄)



49-25 椀形鍛冶滓 (極小・含鉄)



49-26 含鉄鉄滓 (椀形鉄塊?)



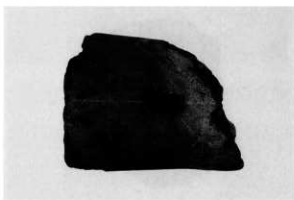
49-27 小型坩堝 (青銅系)



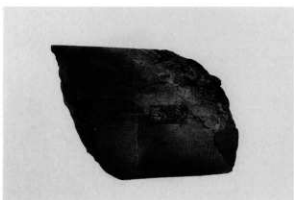
50-28 羽口 (鍛冶・先端部～体部)



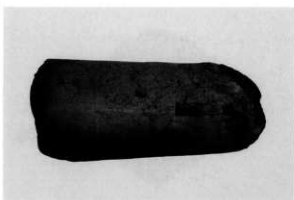
50-29 羽口 (鍛冶・先端部～体部)



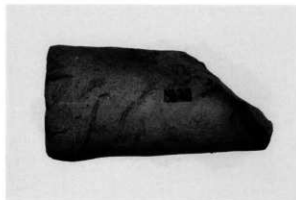
50-30 羽口 (鍛冶・先端部～体部)



50-31 羽口 (鍛冶・先端部～体部)



50-32 羽口 (鍛冶・先端部～体部)



50-33 羽口 (鍛冶・先端部～体部)



51-34 椀形鍛冶滓 (特大)



51-35 椀形鍛冶滓 (大)



51-36 椀形鍛冶滓 (中)



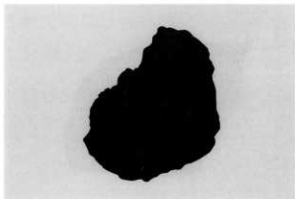
51-37 椀形鍛冶滓 (中)



51-38 椀形鍛冶滓 (小)



51-39 椀形鍛冶滓 (小)



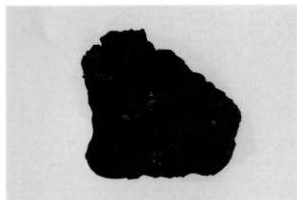
51-40 椀形鍛冶滓 (極小)



51-41 椀形鍛冶滓 (極小)



52-42 椀形鍛冶滓 (極小・含鉄)



52-43 椀形鍛冶滓 (極小・含鉄)



52-44 含鉄鉄滓



52-45 炉壁 (鍛冶炉・羽口付き)



52-46 炉壁 (鍛冶炉・羽口付き)



52-47 羽口 (鍛冶・先端部～体部)



52-48 羽口 (鍛冶・先端部～体部)



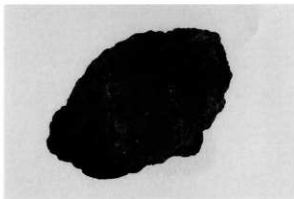
52-49 羽口（鍛冶・先端部～体部）



52-50 羽口（鍛冶・先端部～体部）



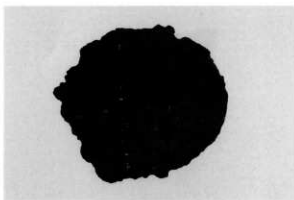
52-51 羽口（鍛冶・先端部～体部）



53-52 椀形鍛冶滓（大）



53-53 椀形鍛冶滓（大）



53-54 椀形鍛冶滓（中）



53-55 椀形鍛冶滓（中）



53-56 椀形鍛冶滓（中・羽口付き）



53-57 梘形鍛冶滓 (中・工具痕付き)



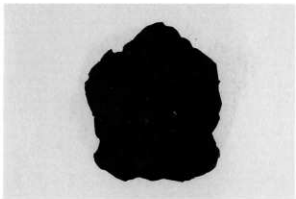
53-58 梘形鍛冶滓 (中・工具痕付き)



54-59 梘形鍛冶滓 (小)



54-60 梘形鍛冶滓 (小)



54-61 梘形鍛冶滓 (極小)



54-62 梘形鍛冶滓 (極小)



54-63 梘形鍛冶滓 (大・含鉄)



54-64 梘形鍛冶滓 (中・含鉄)



54-65 椀形鍛冶滓 (中・含鉄)



54-66 椀形鍛冶滓 (中・含鉄)



54-67 椀形鍛冶滓 (小・含鉄)



54-68 椀形鍛冶滓 (小・含鉄)



54-69 椀形鍛冶滓 (小・含鉄)



55-70 含鉄鉄滓



55-71 含鉄鉄滓



55-72 鉄塊系遺物



55-73 炉壁 (溶解炉・含鉄)



55-74 炉壁 (溶解炉・含鉄)



55-75 炉壁 (溶解炉・接合部・含鉄)



55-76 炉壁 (溶解炉・含鉄)



55-77 羽口 (鍛冶・先端部～体部)



55-78 羽口 (鍛冶・先端部～体部)



55-79 羽口 (鍛冶・先端部～体部)



55-80 楕形鍛冶滓 (大)



56-81 椀形鐵冶滓 (大)



56-82 椀形鐵冶滓 (中)



56-83 椀形鐵冶滓 (中・工具痕付き)



56-84 椀形鐵冶滓 (小・工具痕付き)



56-85 椀形鐵冶滓 (小)



56-86 椀形鐵冶滓 (小)



56-87 椀形鐵冶滓 (極小)



56-88 椀形鐵冶滓 (極小・含鉄)



57-89 梘形鐵冶滓 (大・含鉄)



57-90 梘形鐵冶滓 (中・含鉄)



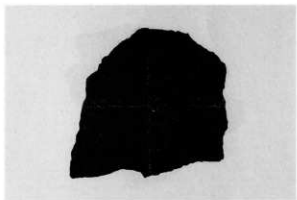
57-91 梘形鐵冶滓 (中・含鉄)



57-92 羽口 (鐵冶)



57-93 羽口 (鐵冶)



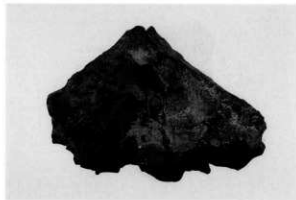
57-94 炉壁 (溶解炉・発泡)



57-95 炉壁 (溶解炉・淨化)



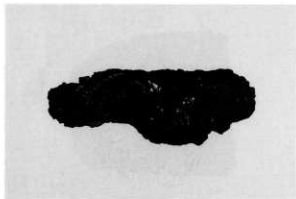
57-96 炉壁 (溶解炉・接合部)



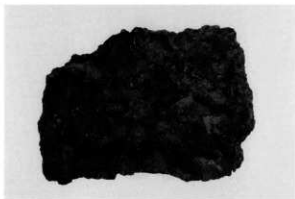
57-97 炉壁 (溶解炉・炉内滓付き)



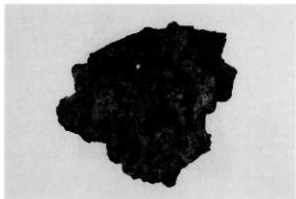
58-98 炉壁 (溶解炉・炉内滓付き)



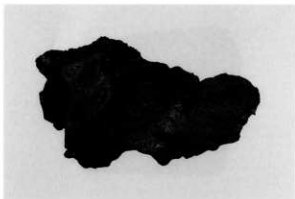
58-99 炉壁 (溶解炉・含鉄)



58-100 炉壁 (溶解炉・含鉄)



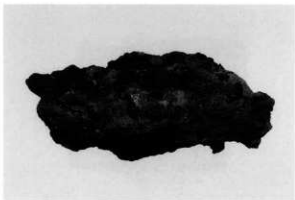
58-101 炉壁 (溶解炉・含鉄)



58-102 炉壁 (溶解炉・接合部・含鉄)



58-103 炉壁 (溶解炉・接合部・含鉄)



58-104 炉壁 (溶解炉・接合部・含鉄)



58-105 炉壁 (溶解炉・接合部・含鉄)



58-106 炉壁 (溶解炉・鉄粒付き・含鉄)



59-107 炉壁 (溶解炉・補修)



59-108 炉壁 (溶解炉・補修)



59-109 炉壁 (溶解炉・補修)



59-110 炉壁 (炉壁炉底・含鉄)



60-111 炉壁 (炉壁炉底・含鉄)



60-112 炉壁 (炉壁炉底・含鉄)



60-113 炉内滓 (溶解炉)



60-114 炉内滓 (溶解炉・含鉄)



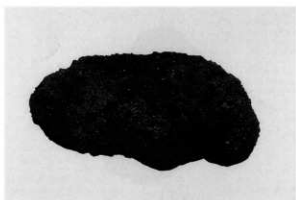
60-115 炉内滓 (溶解炉・含鉄)



60-116 炉内滓 (溶解炉・接合部・含鉄)



60-117 小型坩堝 (青銅系)



61-118 鉄塊系遺物



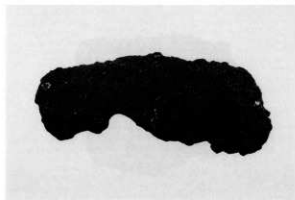
61-119 鉄塊系遺物



61-120 鉄塊系遺物



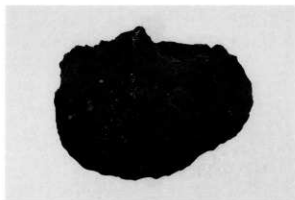
61-121 鉄塊系遺物



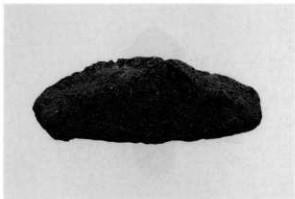
61-122 鉄塊系遺物



61-123 鉄塊系遺物



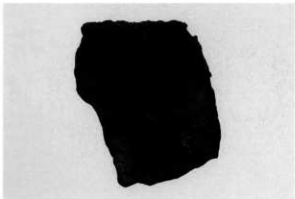
61-124 鉄塊系遺物 (炉壁付き)



61-125 鉄塊系遺物 (鉄鉄塊)



61-126 鉄塊系遺物 (粗鉄塊)



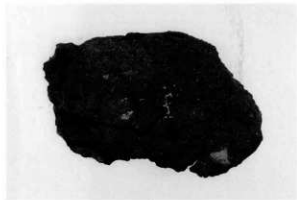
61-127 鉄製品 (鋳造品)



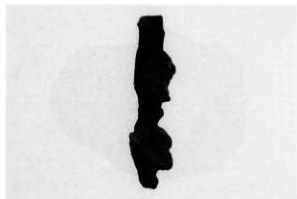
61-128 鉄製品 (鋳造品・環付き)



61-129 鉄製品 (鑄造品)



61-130 鉄製品 (鑄造品)



61-131 鉄製品 (鑄造品・棒状)



61-132 鉄製品 (鑄造品・棒状)



61-133 鉄製品 (鑄造品・釘)



61-134 鉄製品 (鑄造品・釘)