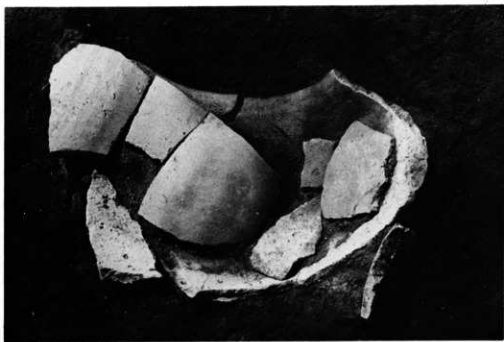




土師甕形土器出土状況No.8 第1地点 (C-8Ⅱ-2)



土師甕形土器出土状況 第3地点 (C-17区-3 a上)



8号土城第3地点(F-16I区)



9号土城第3地点(B-16IV区)



ピット出土状況No.5 第1地点(D・E-8・9区)東南から



溝状遺構No.7 第2地点(E-11区)東南から



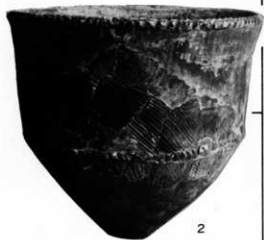
近世墓No.13 第4地点 (C-27杭附近)



調査風景 第1地点 (C・D・E-7・8区附近) 北から



1



2



3

1. 連点鋸齒文 2. 手向山式土器 3. 燃糸文土器



4. 凸带槽系文土器 5. 石板式土器 6. 円筒形条痕文土器



7

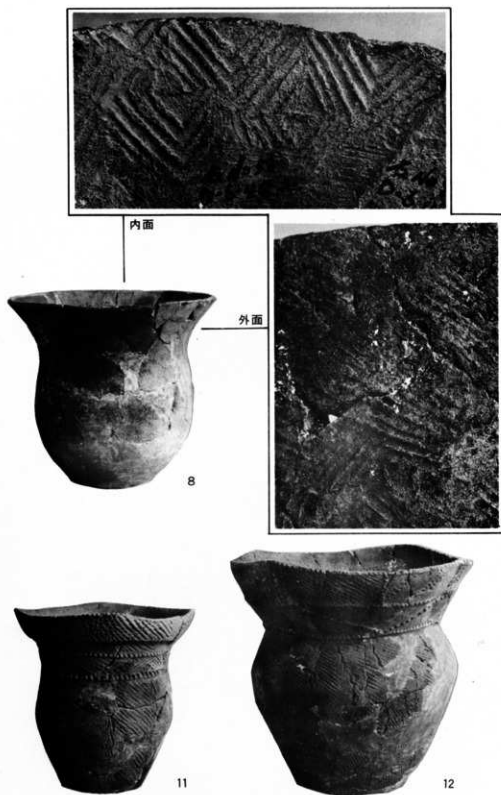


9



10

7・9・10 樽形押型文土器



8. 菱形押型文土器 11・12 平檐式土器





13



14



15

13. 平栴式土器 14・15. 塞ノ神A a式土器



16. 深浦式土器 17. 春日式土器

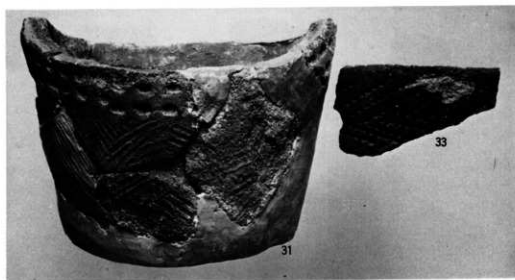


18

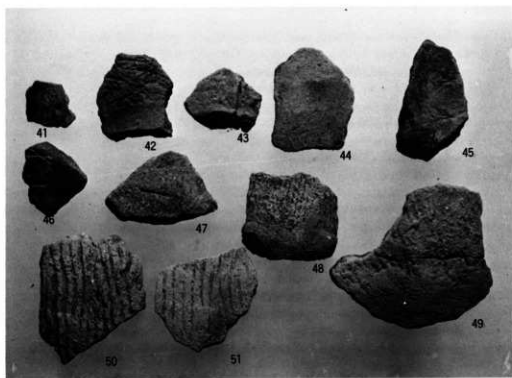
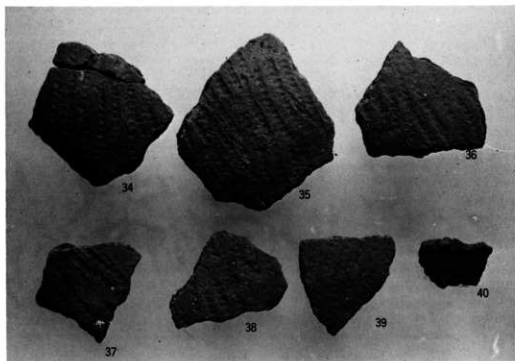
18. 石峰式土器 (橢圓形押型文+変形燃糸文)



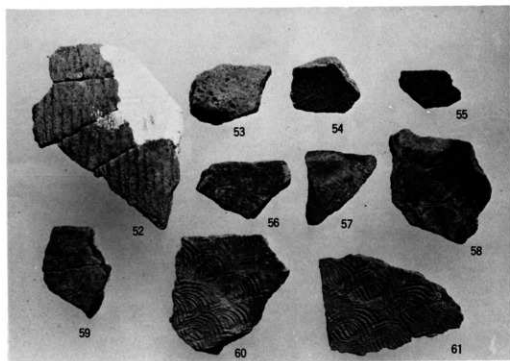
条直文・貝殻刺突文・吉田式土器



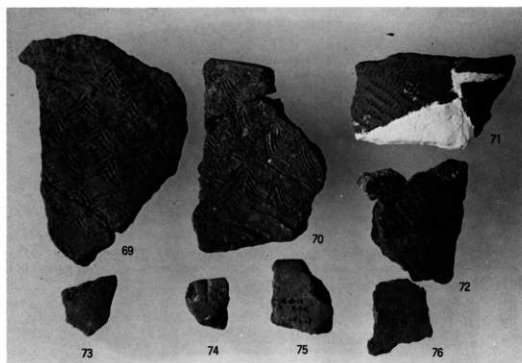
31~33 石板式土器



燃糸文土器



撚糸文土器・菱形撚糸文土器

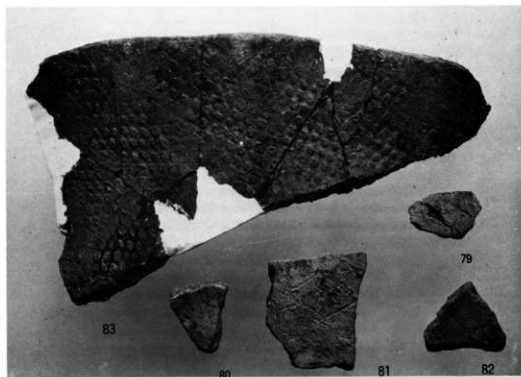


変形撚糸文・縄文・網目文土器

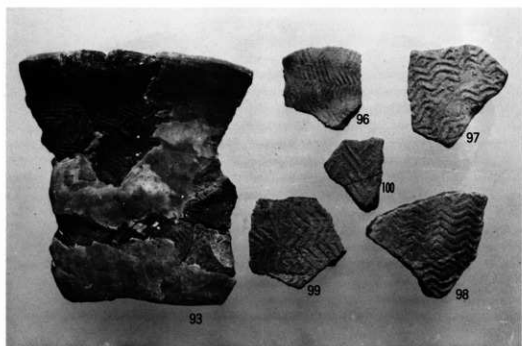
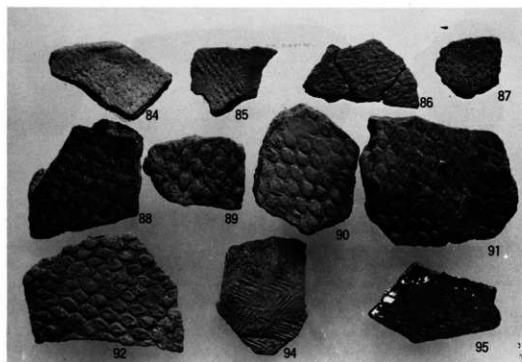




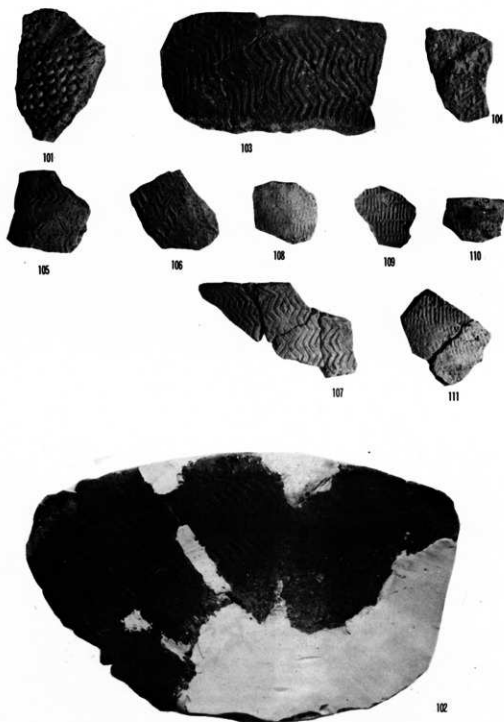
77



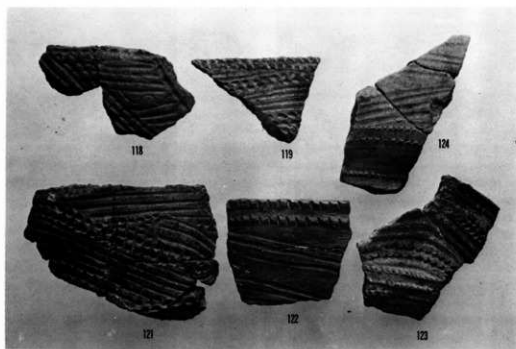
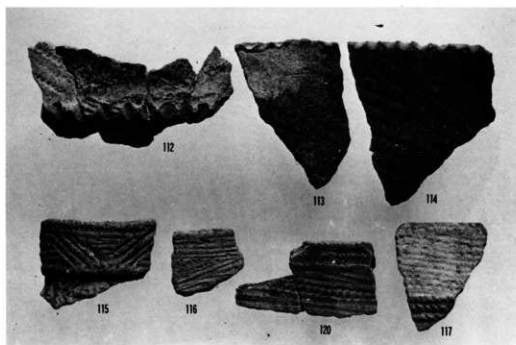
網目文土器・楕円形押型文土器



楕円・山形押型文土器



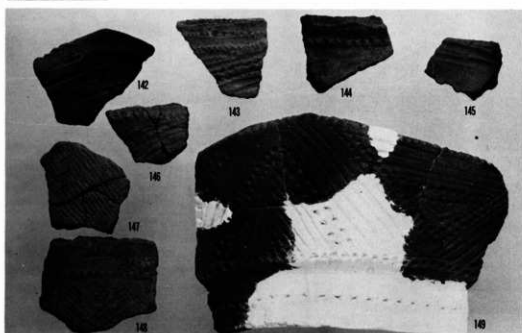
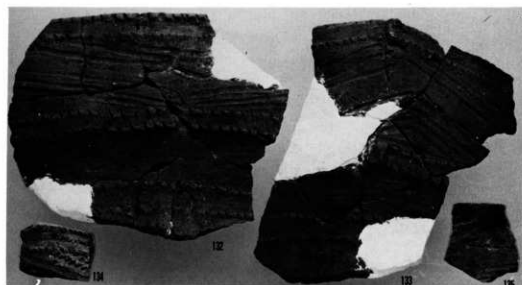
山形押型文・細線格子状押型文土器



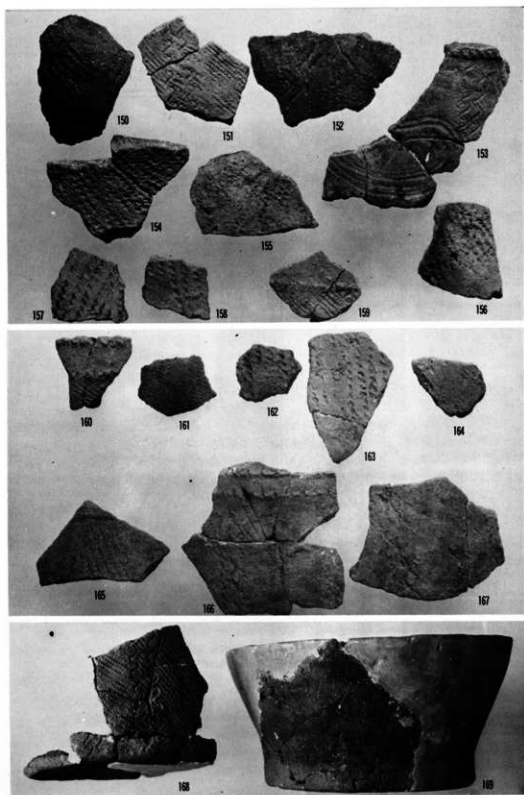
手向山式土器・平栴式土器



平栴式土器



平栴式土器

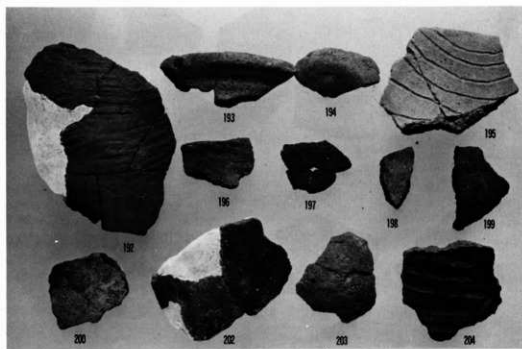


平栴式土器

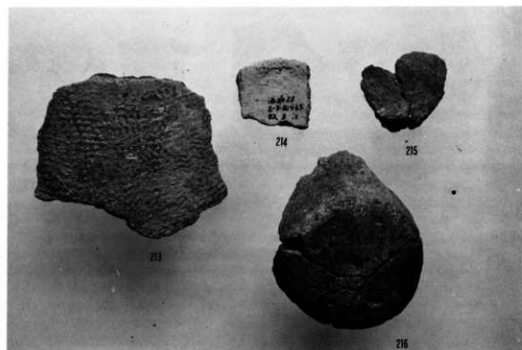
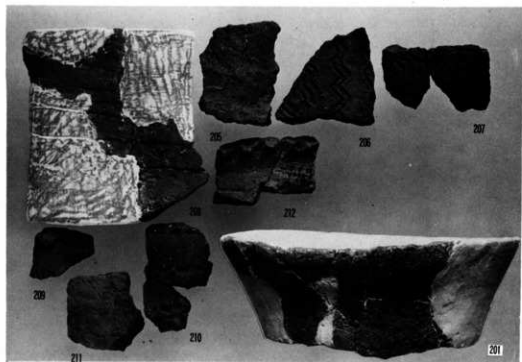


平格式土器

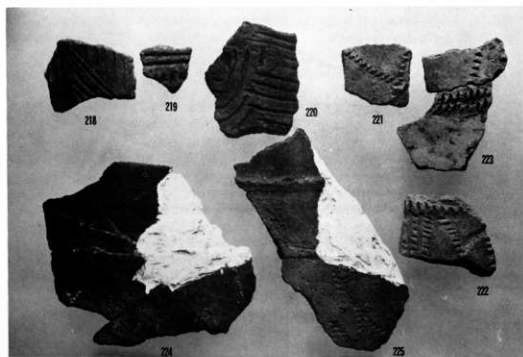
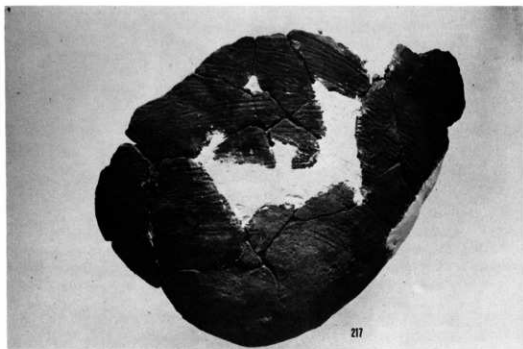




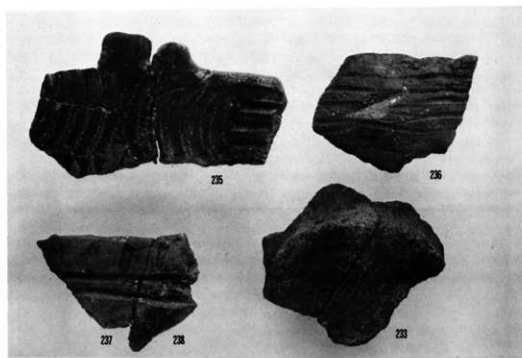
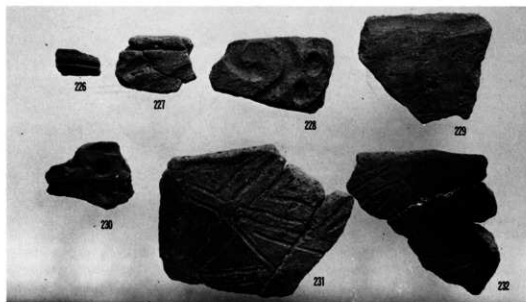
平栴式土器 (無文) 斜行凹線文土器・表裏弧文土器 他



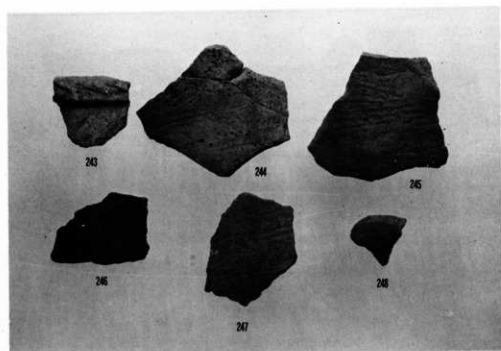
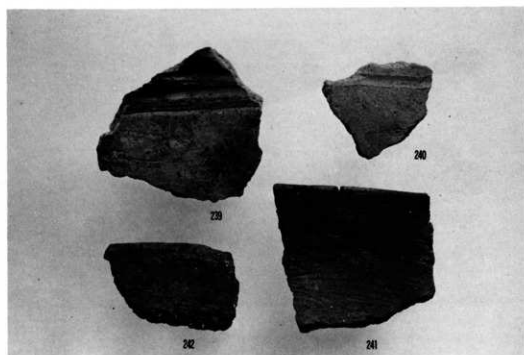
凸帶刻目文・沈線文・押型文土器 他



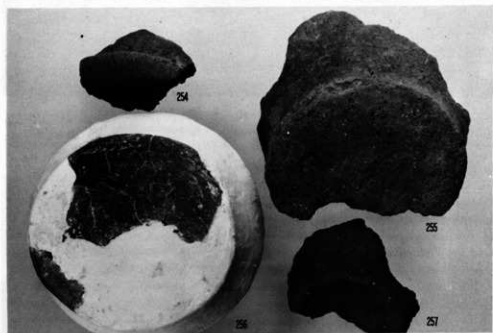
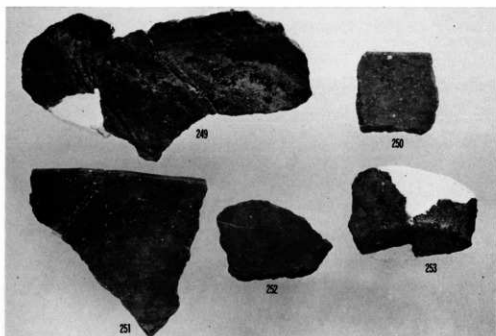
轟式・曾畑式・深浦式土器



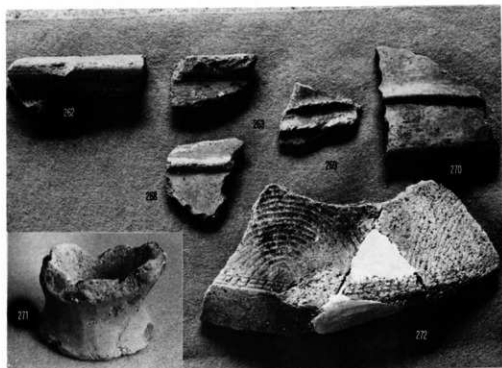
阿高式・岩崎上層式土器



草野式土器他



他底部器土文痕条



弥生式土器

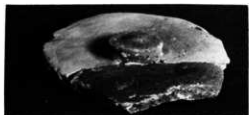


弥生系土器



弥生系土器・土師器





356



363



367



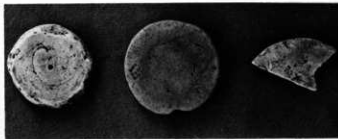
406



387



402



410

土 師 器

411

412