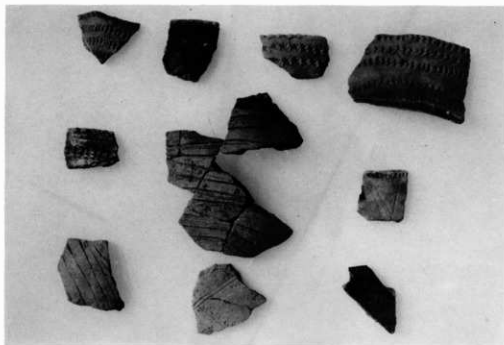




V a層出土遺物



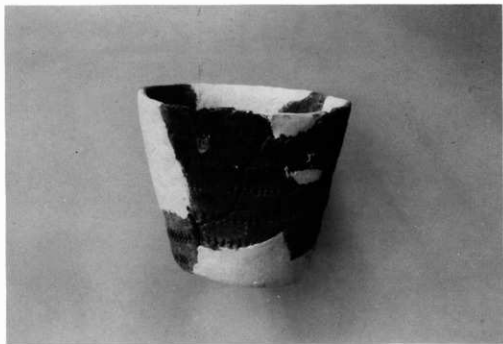
V a層出土遺物



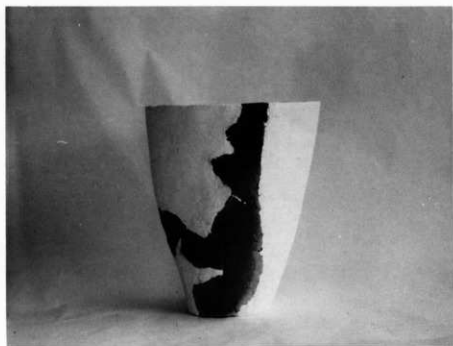
V a 層出土遺物



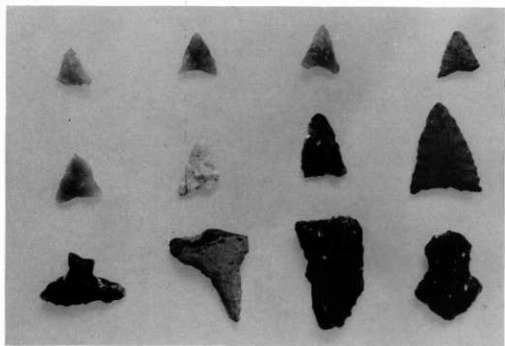
V a 層出土遺物



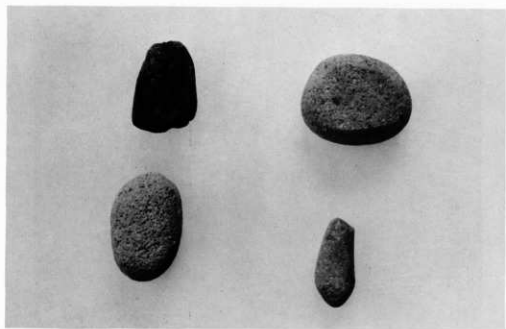
V a 層出土遺物



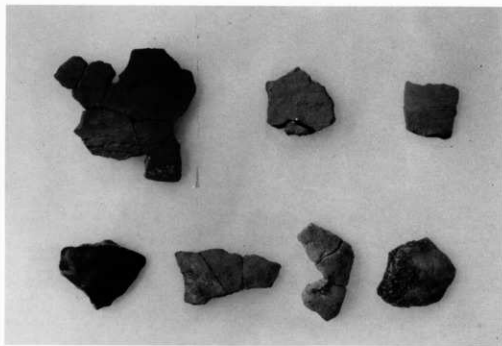
V a 層出土遺物



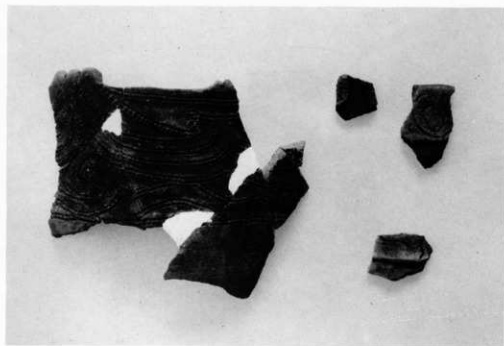
V a 層出土遺物



V a 層出土遺物



Ⅲ c 層出土遺物



Ⅲ a 層出土遺物



Ⅱ a 層出土遺物



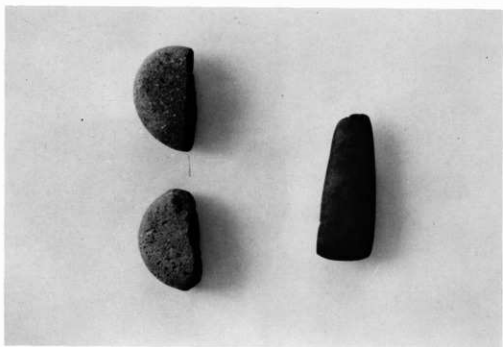
Ⅱ a 層出土遺物



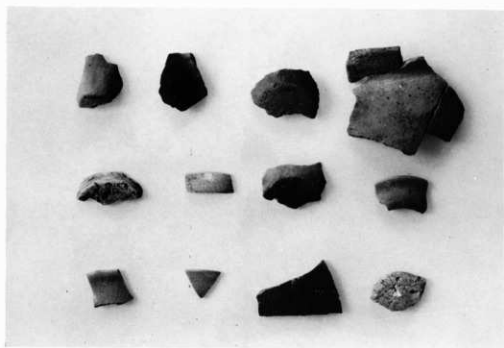
Ⅱ a 層出土遺物



Ⅱ a 層出土遺物

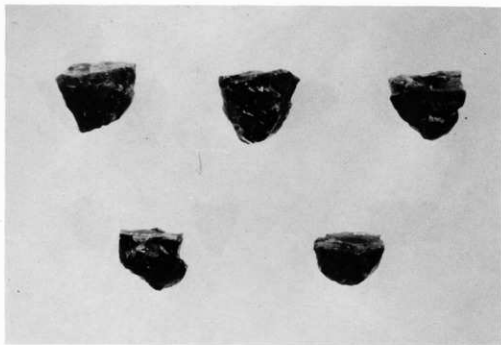


互層出土遺物

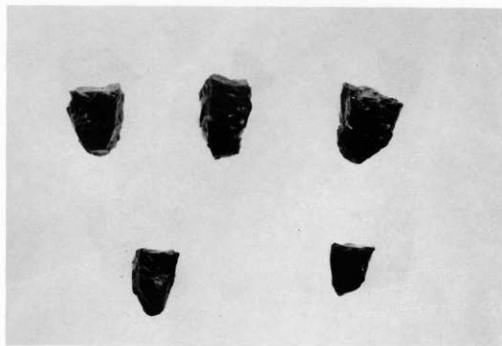


古墳時代以降の出土遺物

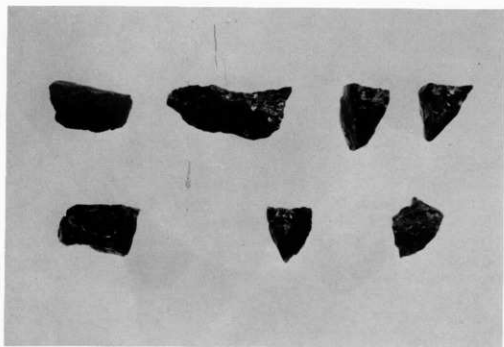




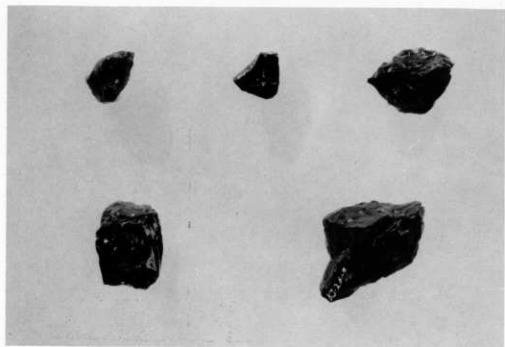
黑曜石細石刃核



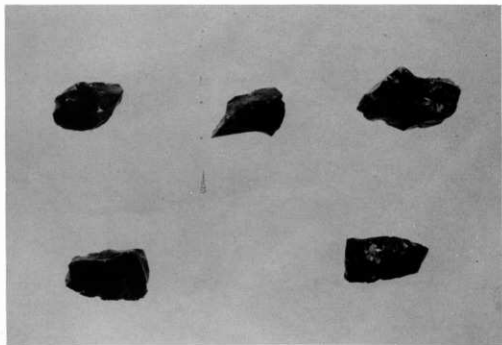
黑曜石細石刃核



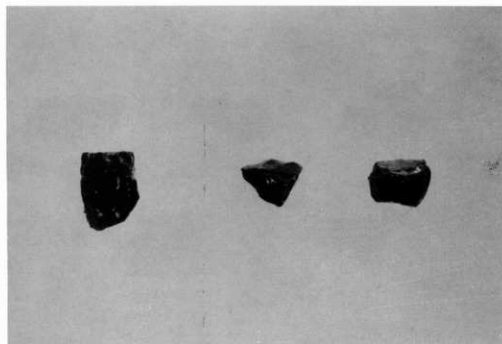
黑曜石細石刃核



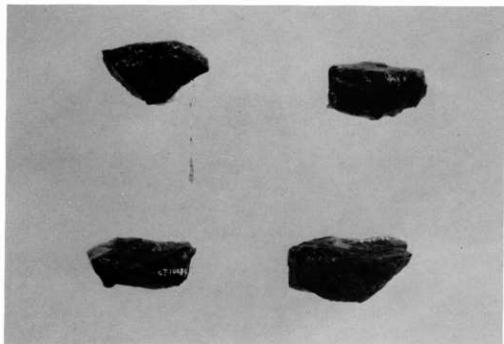
黑曜石細石刃核



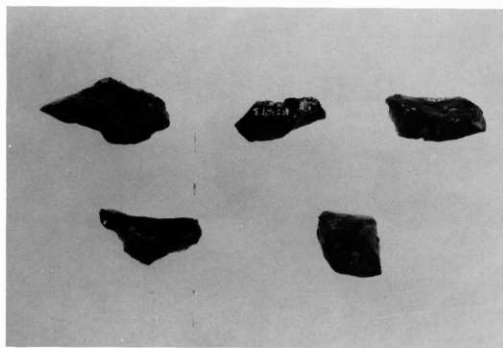
黑曜石細石刃核



黑曜石細石刃核



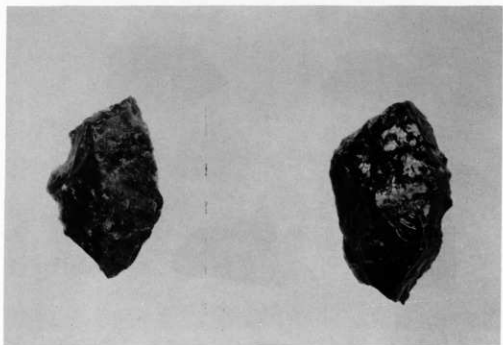
黒曜石ブランク



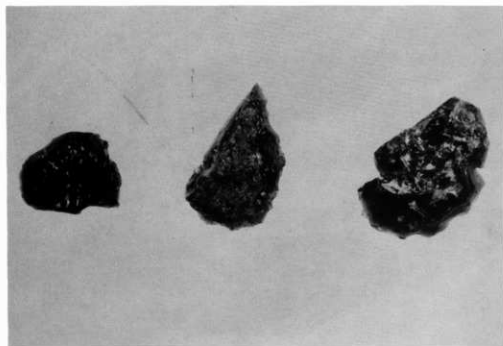
黒曜石ブランク



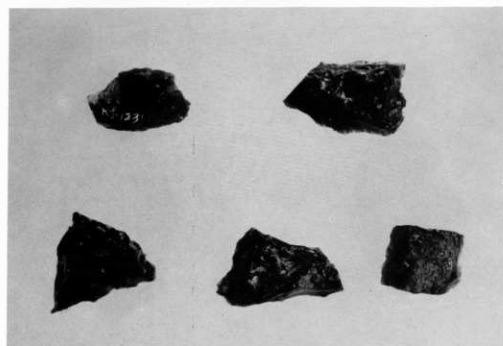
黒曜石ブランク



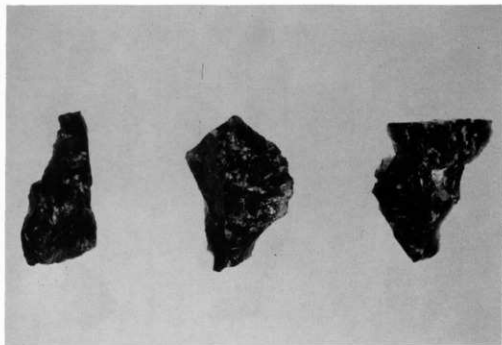
黒曜石振器



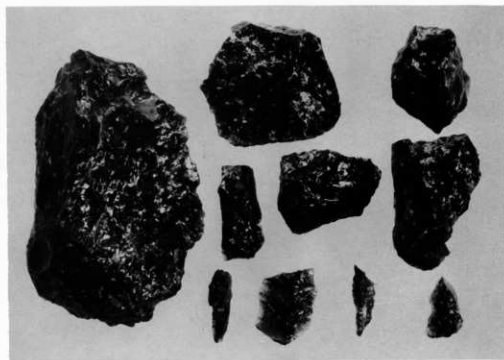
黑曜石石器



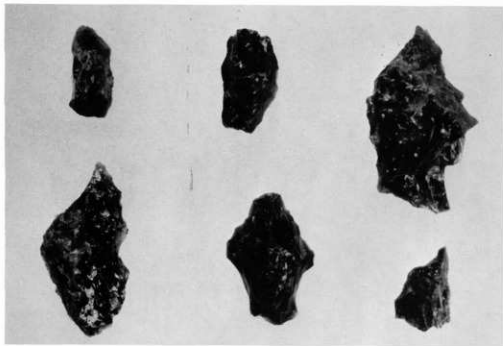
黑曜石石器



黒曜石、使用痕のある割片（削器）



黒曜石、使用痕のある割片（削器）

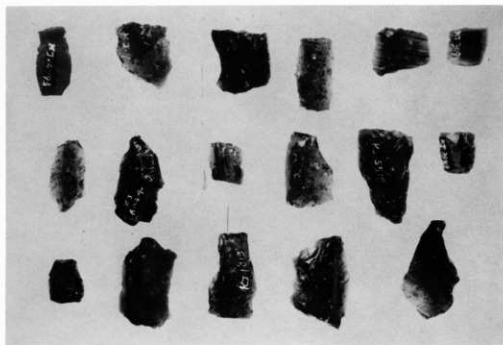


黒曜石・その他の石器

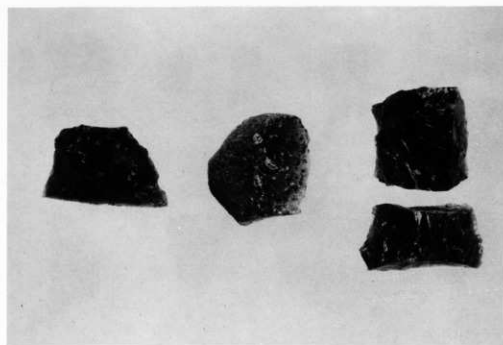


黒曜石フレイク

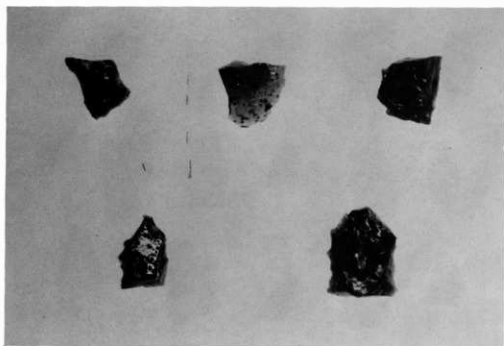




黒曜石フレイク



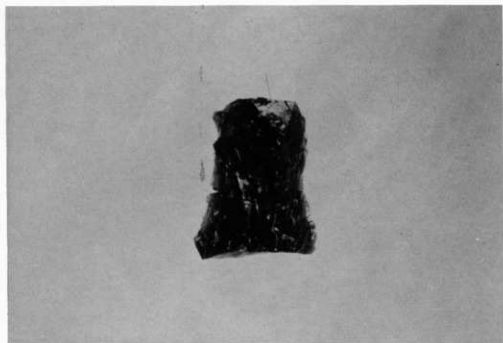
黒曜石フレイク



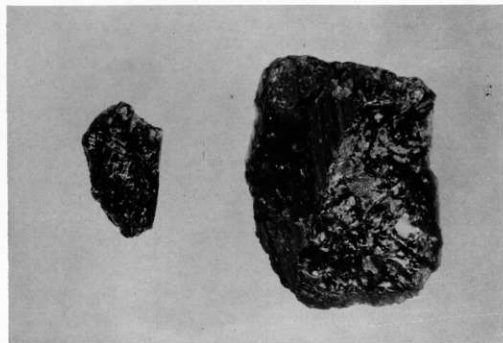
黒曜石・使用痕のある製片 (剛器)



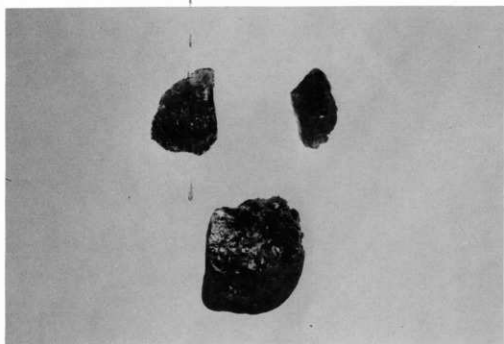
黒曜石・使用痕のある製片 (剛器)



黑曜石·折斷碎片 (接合)



黑曜石·石核, 削器



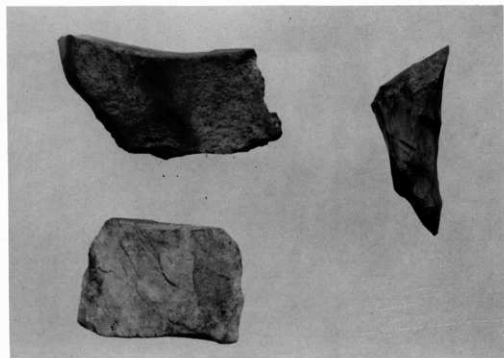
黒曜石・石核と製片（接合）



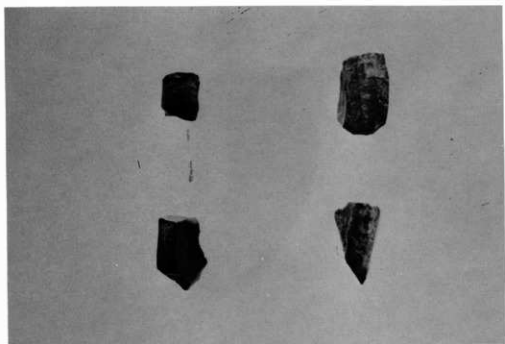
石核



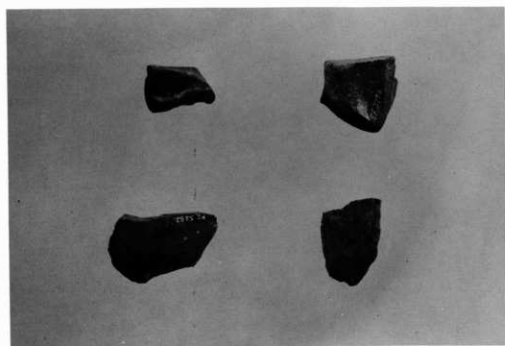
頁岩，刮器



形器，制片



ホルンフェルス細石刃核 (正面)



ホルンフェルス細石刃核 (側面)



ハンマー・ストーン



图 38 瓦片



图 39 瓦片