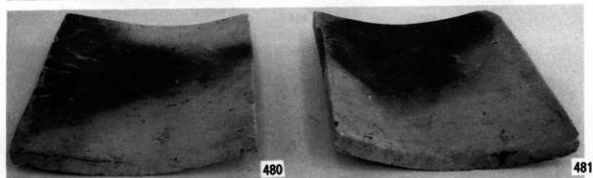
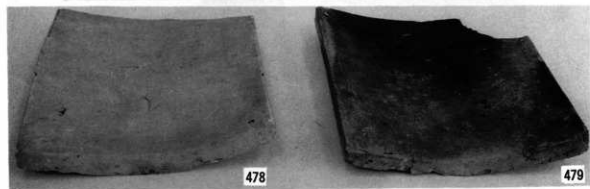
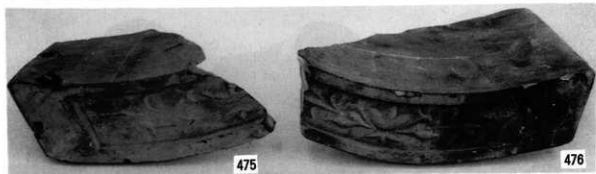
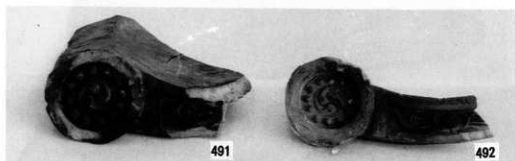
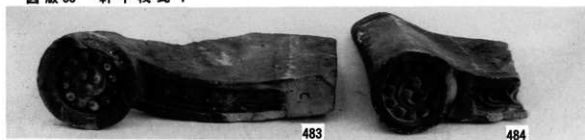


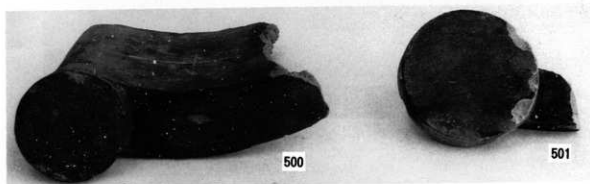
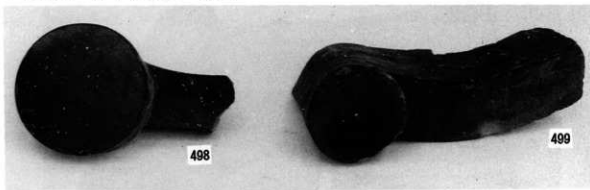
圖版37 軒平瓦・平瓦



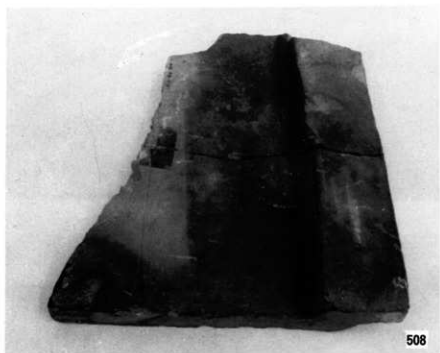
图版 38 軒平棧瓦 1



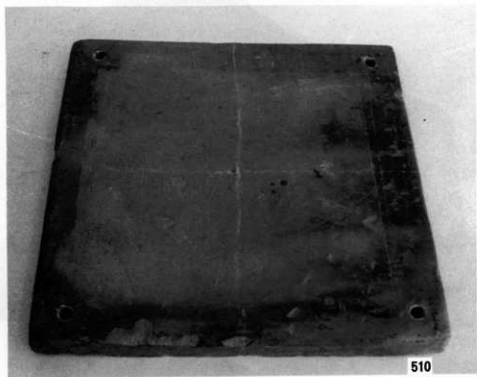
圖版39 軒平棧瓦 2・棧瓦



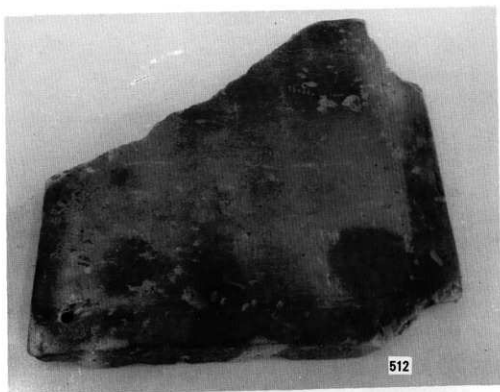
图版40 博瓦 1



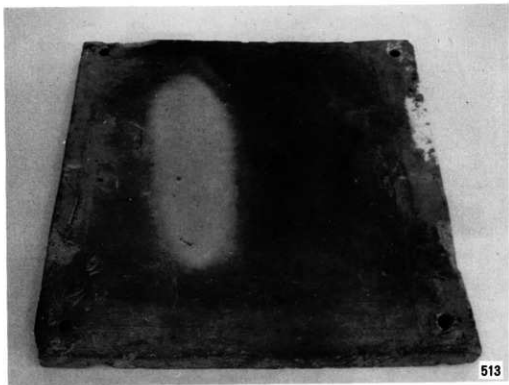
图版41 搏瓦 2



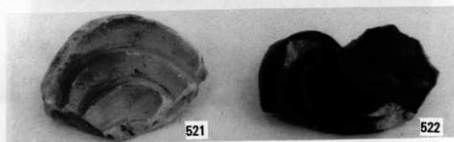
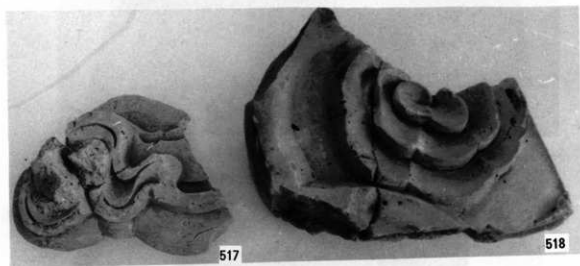
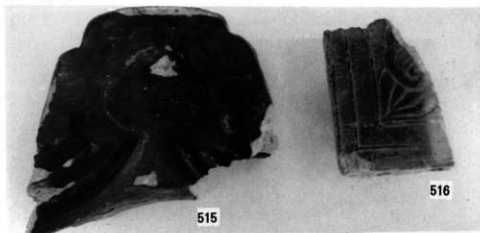
圖版42 博瓦3



图版43 搏瓦4·鬼瓦1



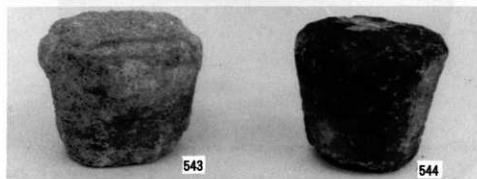
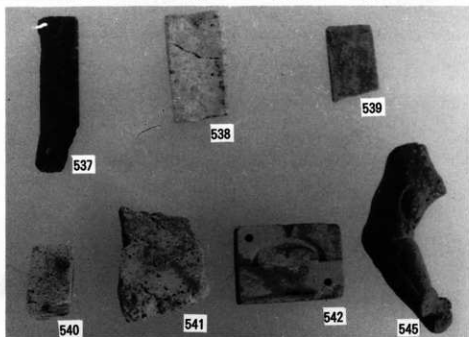
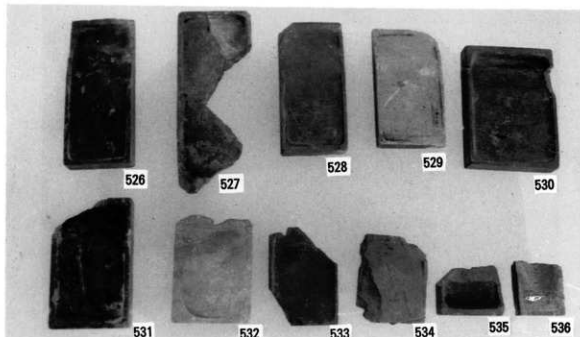
圖版 44 鬼瓦 2



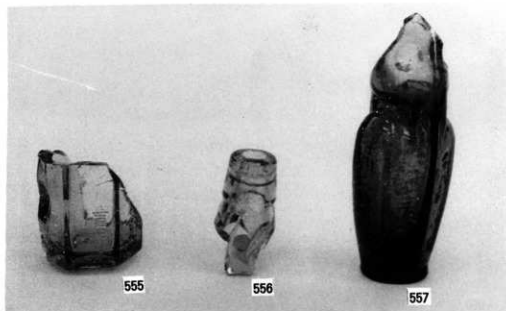
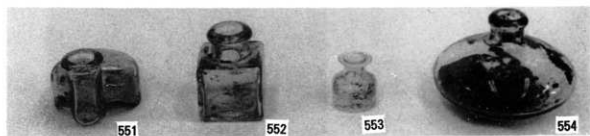
圖版45 石製鬼瓦



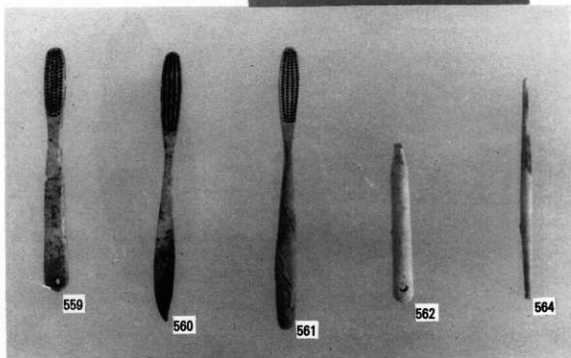
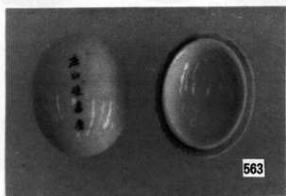
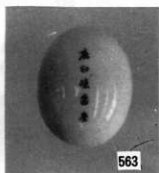
図版46 石製品



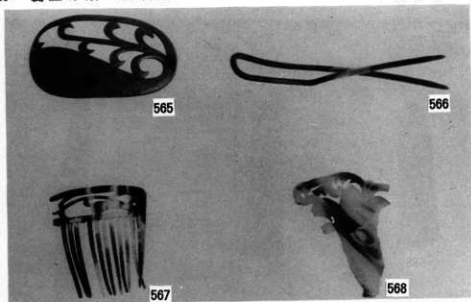
図版47 ガラス製品



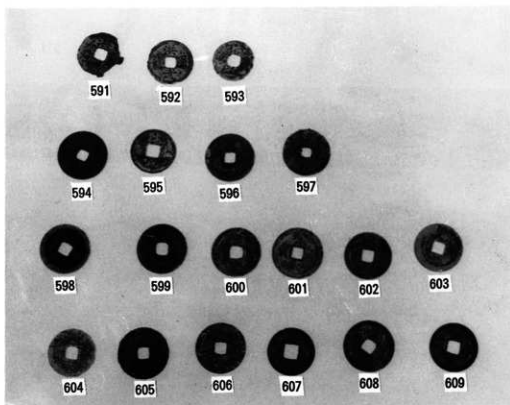
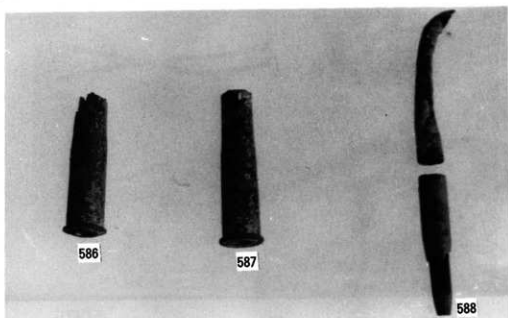
図版48 木製品・洗面具



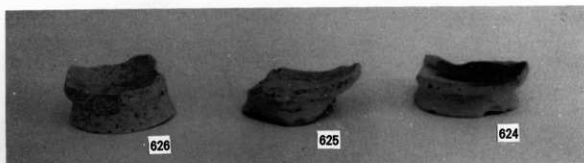
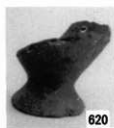
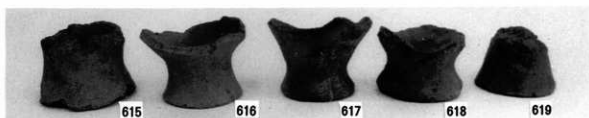
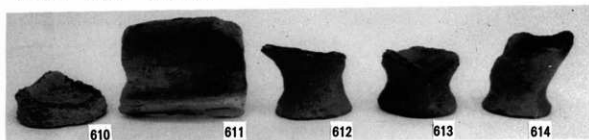
図版49 髪止め類・金属品 1



图版 50 金属品 2



図版51 縄文～平安時代



鹿兒島県埋蔵文化財発掘調査報告書 (60)

鹿兒島城二之丸跡 (遺物編)

発行日 平成4年3月30日

発行 鹿兒島県教育委員会

〒892 鹿兒島市山下町14番50号

印刷 物こだま印刷

〒892 鹿兒島市下田町1898