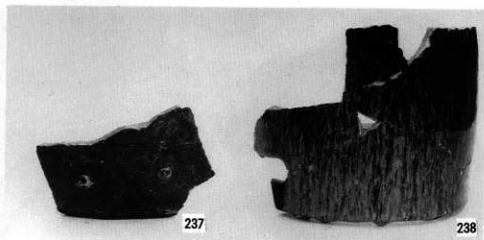
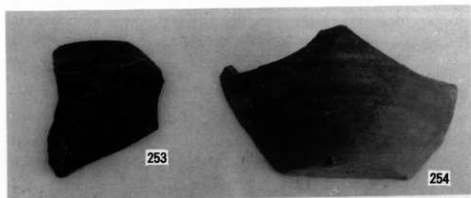
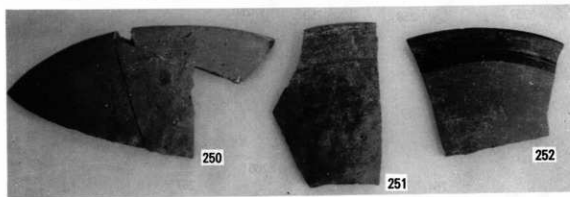
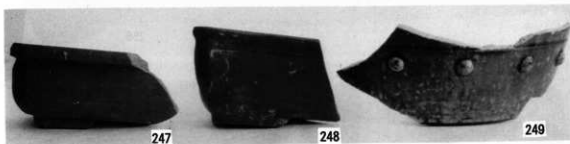


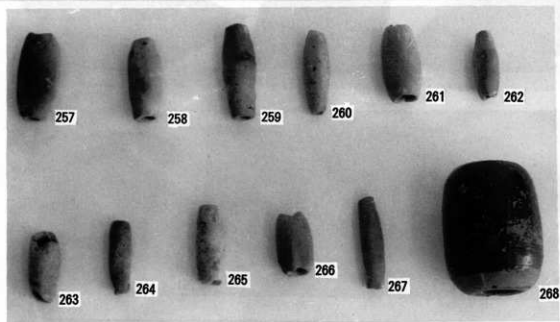
図版16 瀬戸・美濃系 2



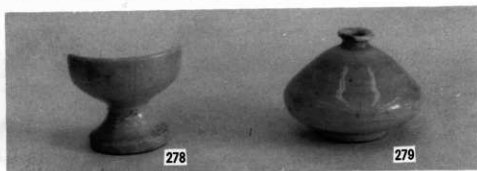
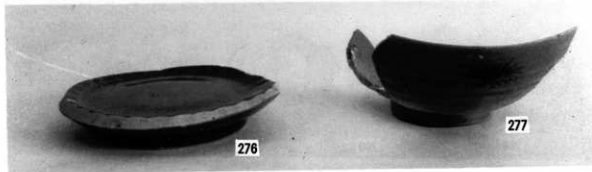
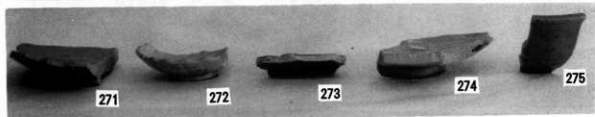
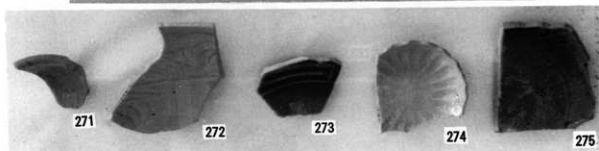
図版17 関西系・肥前系・備前系



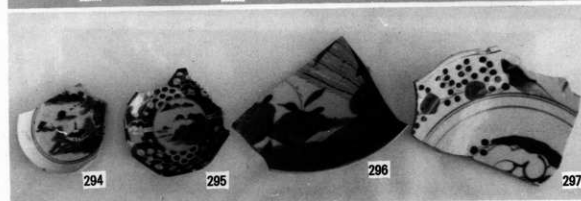
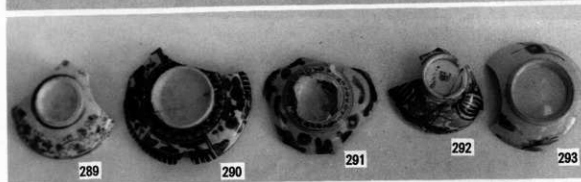
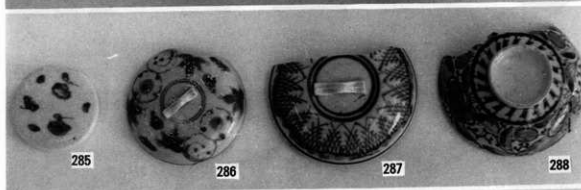
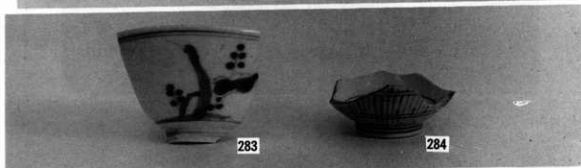
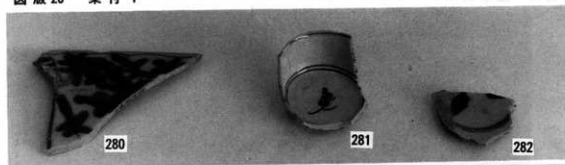
圖版18 土管・土鍾・陶鍾・薩摩白磁1



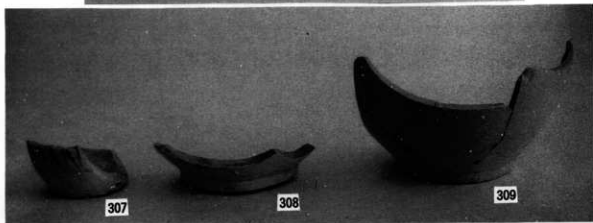
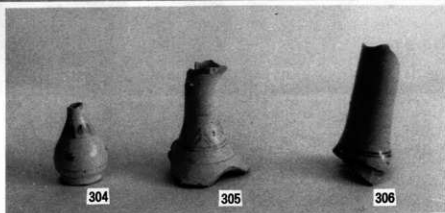
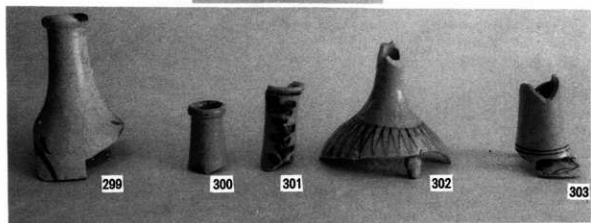
圖版19 薩摩白磁2・青白磁・青磁・白磁



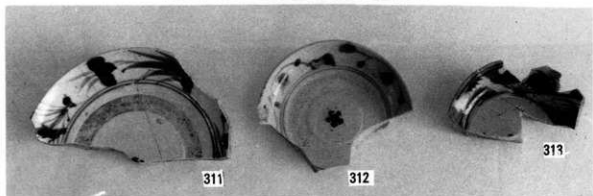
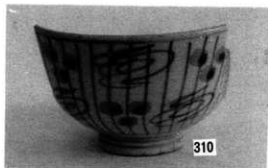
図版 20 染付 1



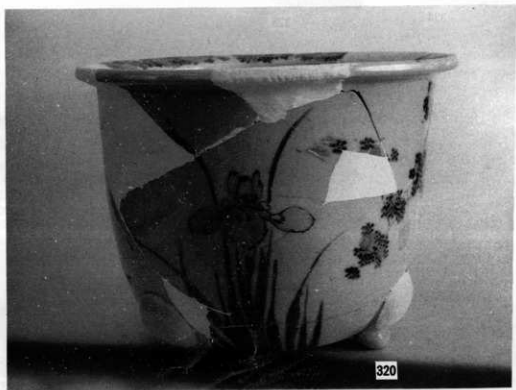
图版21 染付 2



图版 22 染付 3

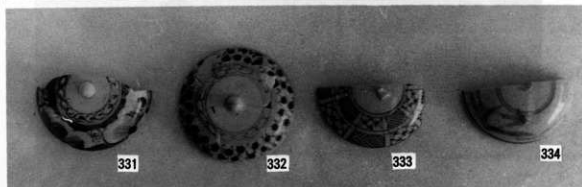
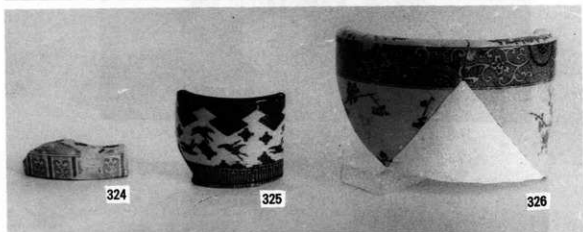
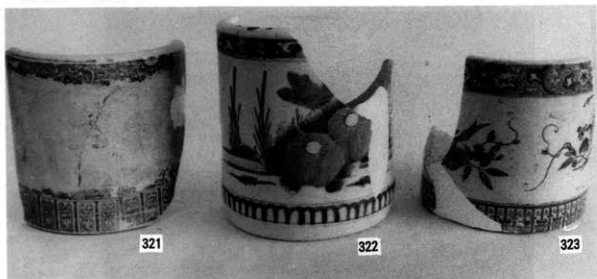


圖版23 染付 4

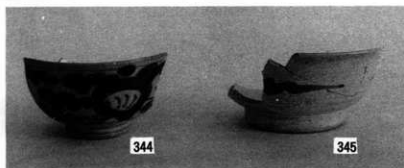
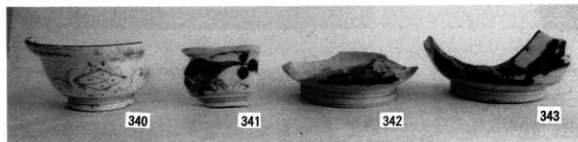
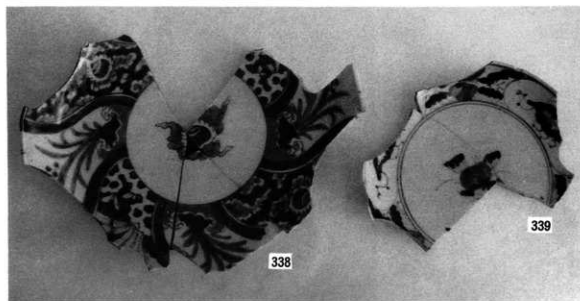
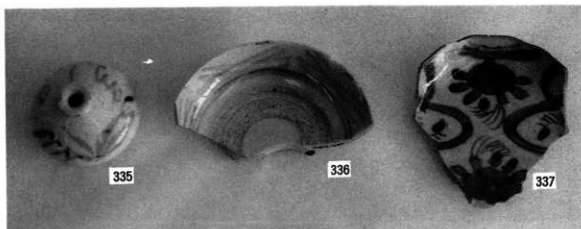




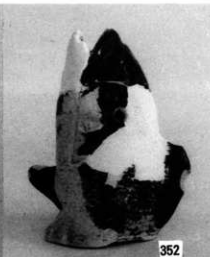
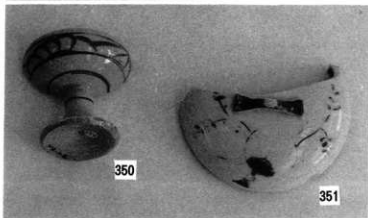
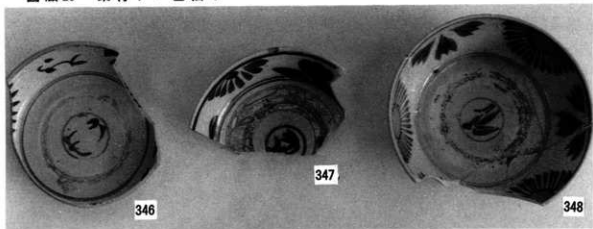
図版 24 染付 5



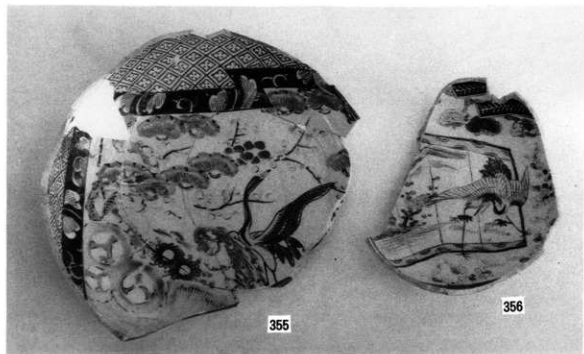
图版 25 染付 6



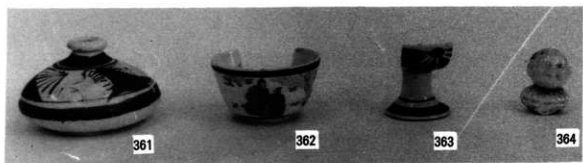
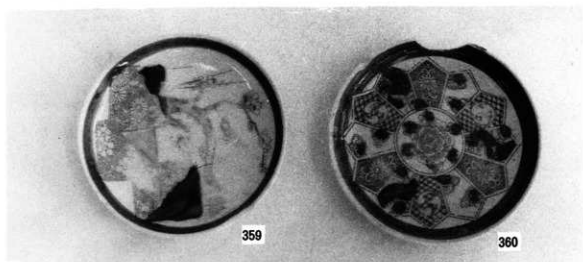
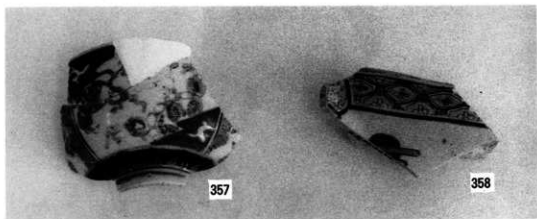
図版26 染付7・色絵1



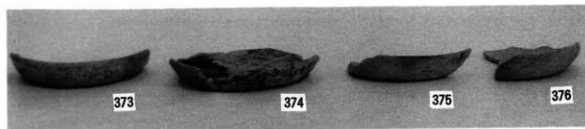
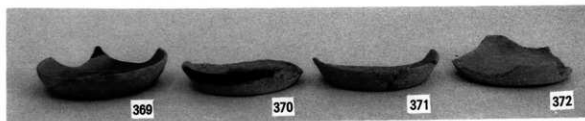
圖版27 色繪 2



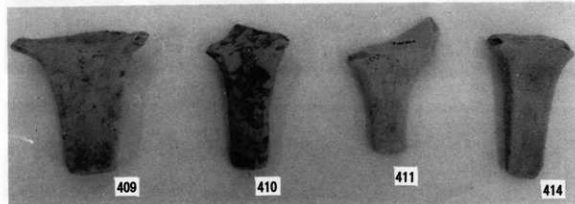
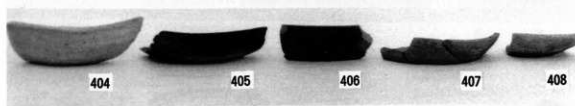
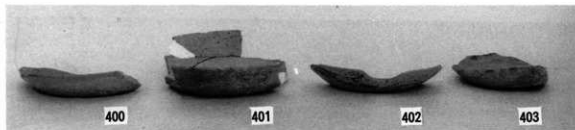
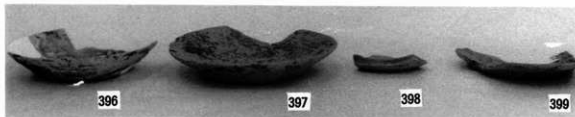
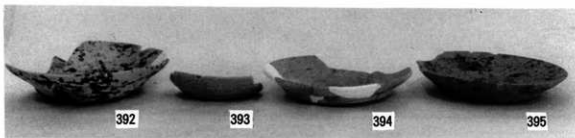
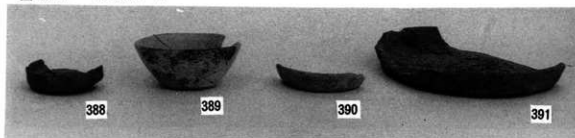
图版 28 色 绘 3



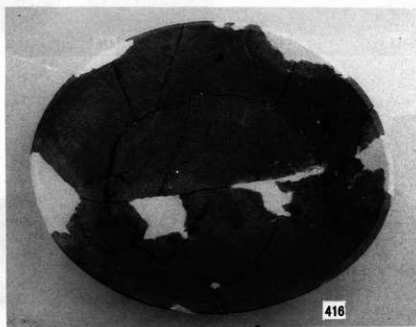
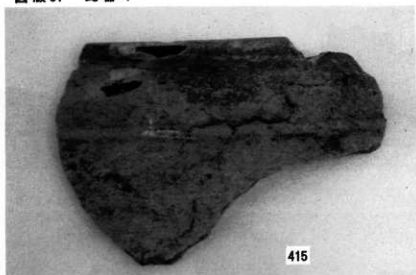
圖版 29 土師器 1



図版30 土師器 2

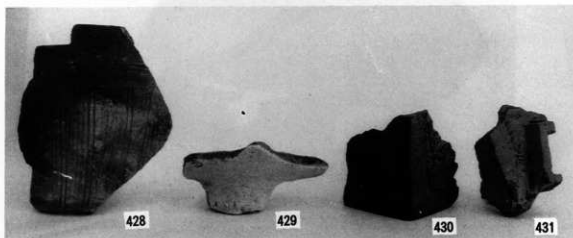
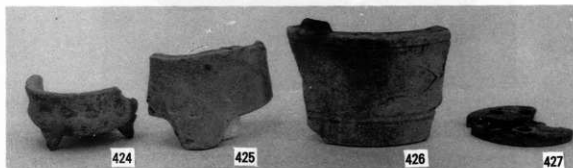
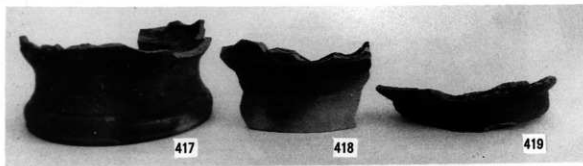


圖版31 瓦器 1

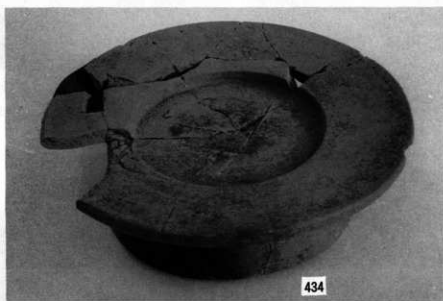
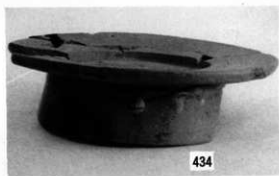
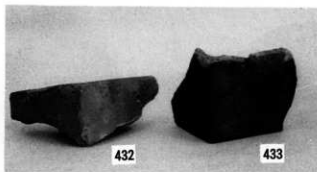




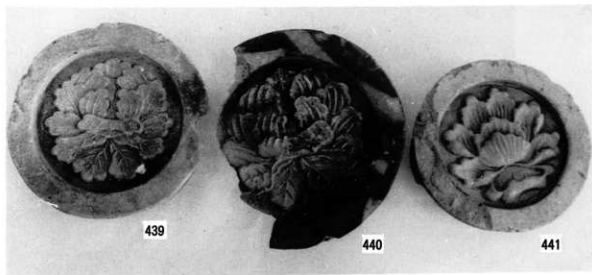
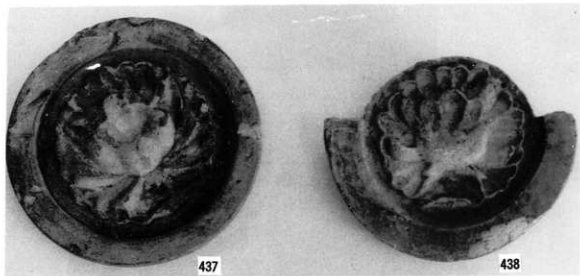
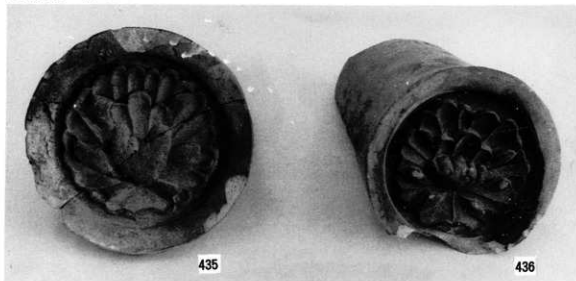
圖版 32 瓦器 2



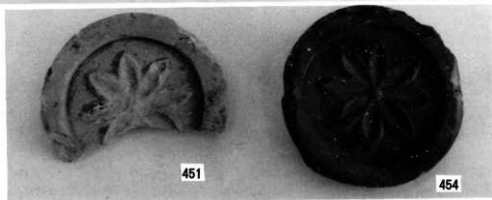
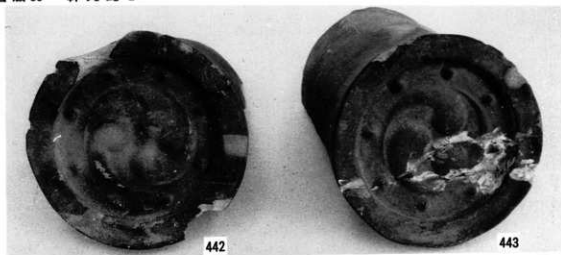
圖版 33 瓦器 3



图版34 軒丸瓦 1



图版35 軒丸瓦 2



図版36 鳥会瓦・差込み瓦・丸瓦

