



第2遺構面全景（北東より）



現地説明会



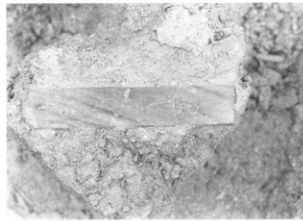
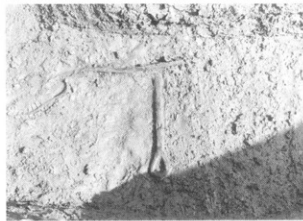
流路 SR201
作業風景（南西より）



流路 SR201土層
（東より）



流路 SR201土層
（南より）



流路 SR201遺物出土状況



用水路 SD202
(東より)



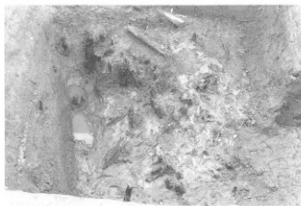
用水路 SD202
(南より)



用水路 SD202土層
(東より)



杭列1 (右上)



杭列2 検出状況



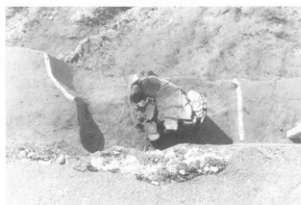
杭列2 掘削状況



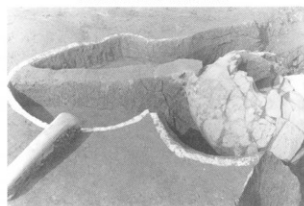
杭列2 断ち割り



土器棺墓 SK03 (北より1)



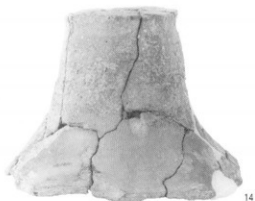
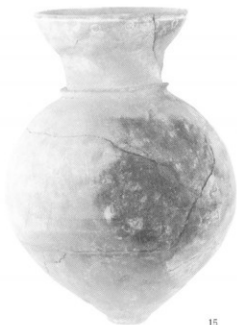
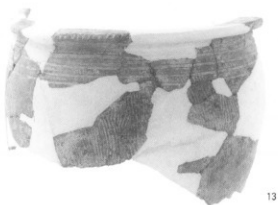
土器棺墓 SK03 (北より2)



土器棺墓 SK06 (南より)



土器棺墓 SK09 (東より)





17



25



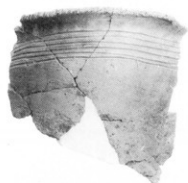
34



41



42



45



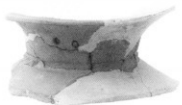
50



56



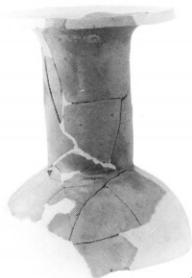
57



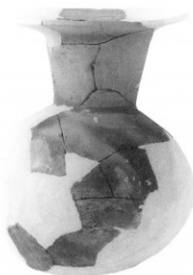
64



61



62



65



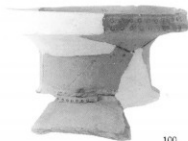
68



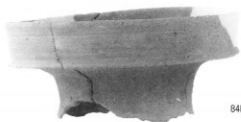
69



87



100



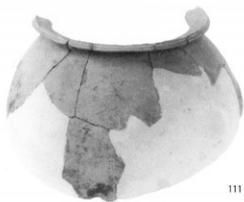
84b



90



92



111



110



113



112



118



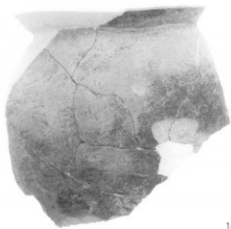
145



137



138



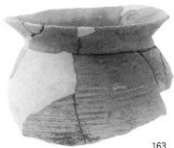
146



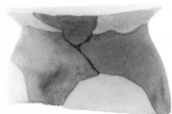
153



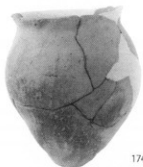
158



163



164



174



194



199a



200



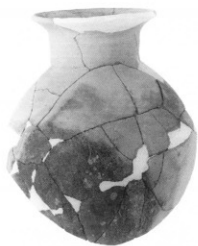
199b



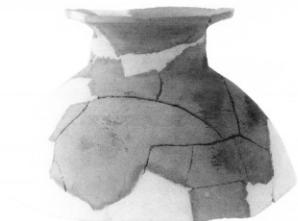
212



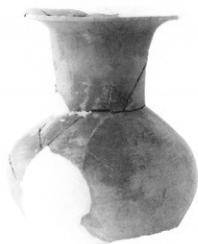
207



213



214



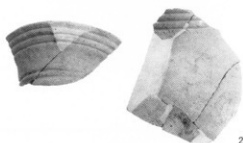
215



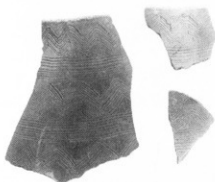
234



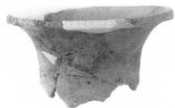
240



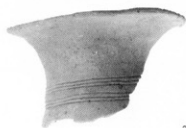
236



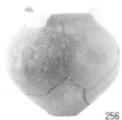
250



251



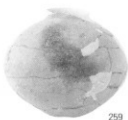
253



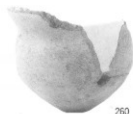
256



258



259



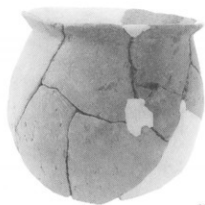
260



270



271



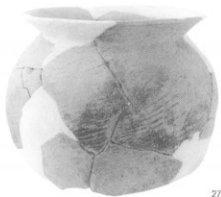
273



274



275



276



278



279



282



283



284



309



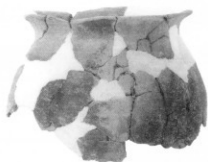
285



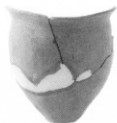
322



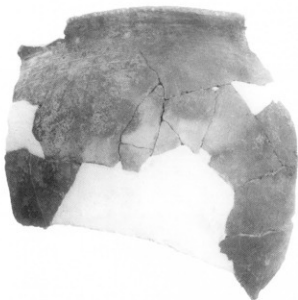
326



327



328



329



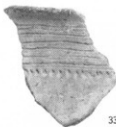
346



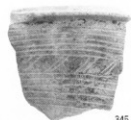
337



335



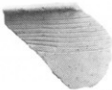
338



345



336



333



341



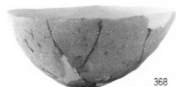
359



361



362



368



387



401



376



382



405



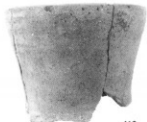
413a



413b



417



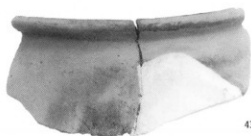
419



421



432



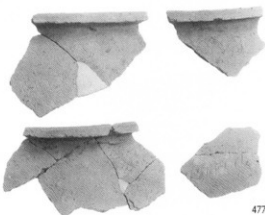
433



456



458



477



481



478



488



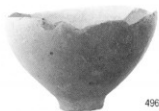
489



491



495



496



496



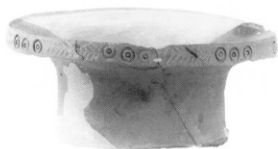
506



512



513



515



514



538a



538b



537



555



542



543



551



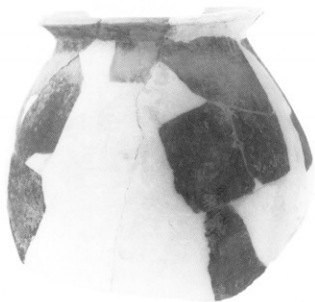
552



556



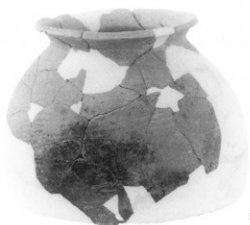
554



573



589



591



593



596



605



609



610



617



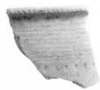
620



624



626



623



618



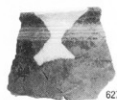
622



619



625



627



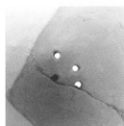
639



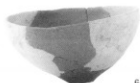
640



642a



642b



647



648



654



653



670a



666



670b



693



695



679



684



696



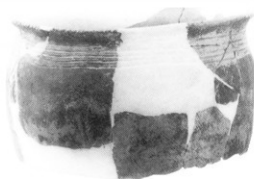
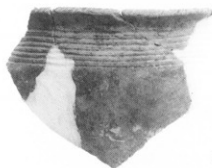
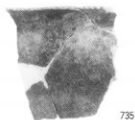
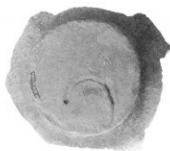
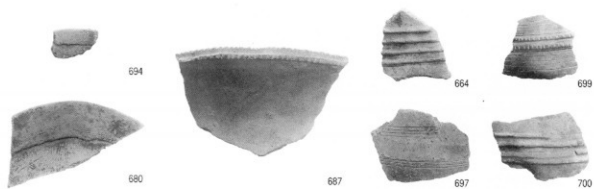
668



690

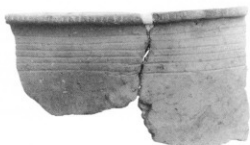


685

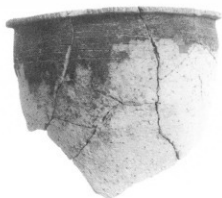




762



768



766



787



788



794



790



800



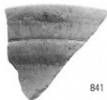
818



832



833



841



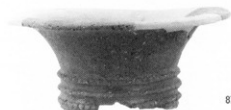
842



845



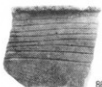
871a



871b



862



864



859



860



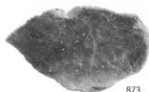
863



865



861



873



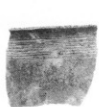
872



879



878



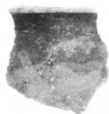
887



881



882



892



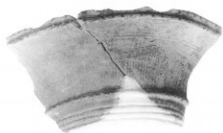
893



884



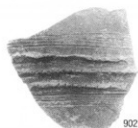
885



901



903



902



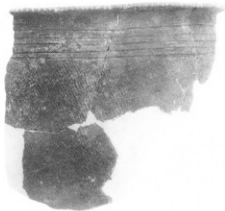
910



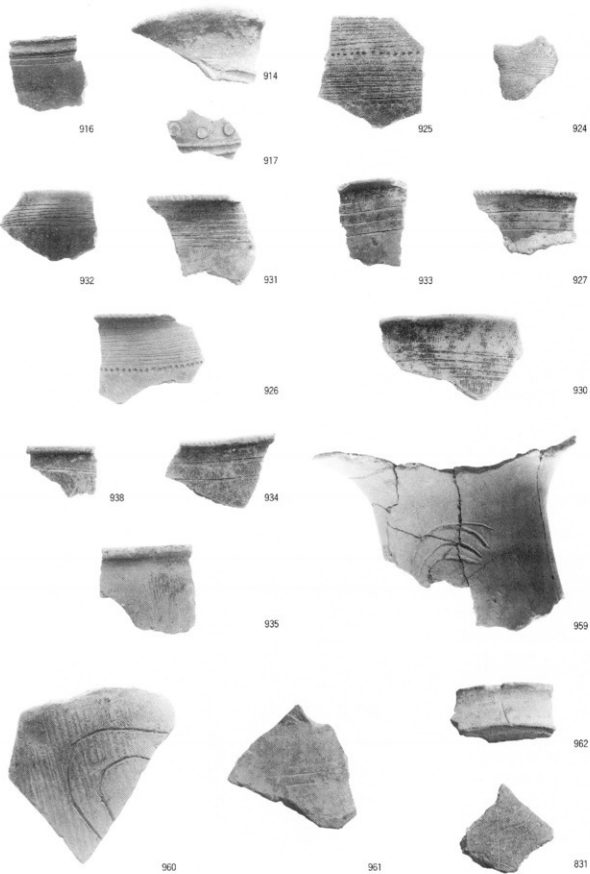
907



904



906



出土遺物21



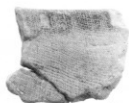
941



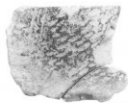
944a



944b



963a



963b



964



965



971



966



963



974



968



969



970



967



981



973



975



972



977



976



976



979



960



982



990



991



992



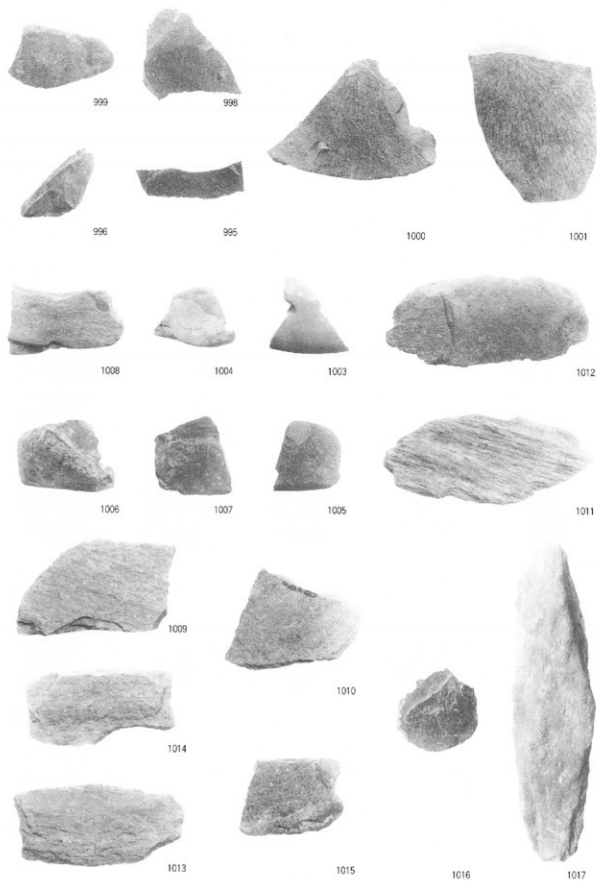
963



994



997



出土遺物24



1018



1002



1023



1019



1020



1021



1022



1025



1026



1027



1024



1028



1035



1034



1033



1036



1037



1038



1039



1040



1041



1042



1043



出土遺物26



1047



1048



1049



1054



1059



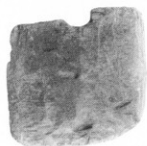
1061



1060



1068



1069



1070



1071



1075



1076



1077



1079



1080



1081



1085



1082



1083



1084



1087



1089



1090



1093



1095



1096



1097a



1097b



1098



1099



1100



1101



1102



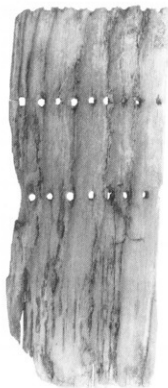
1103



1104



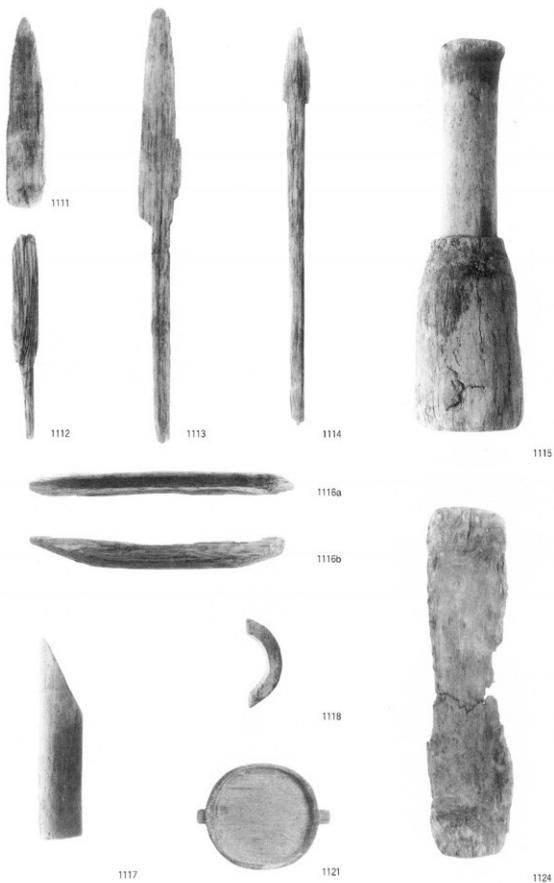
1109



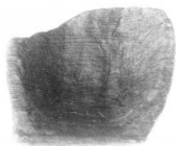
1108



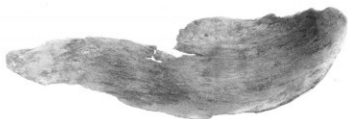
1110



出土遺物31



1126



1128



1131a



1134



1131b



1135



1139a



1132



1141



1139b



1142



1043a



1043b



1147



1149



1152



1157



1159



1161



1162



1164



1166



1167



1174



1179



1180



1183



1186



1194

1189



1201



1202



1203



1205



1212

報告書抄録

ふりがな	しょう(しょう・くらもと)いせき							
書名	庄(庄・蔵本)遺跡							
副書名	徳島大学蔵本団地動物実験施設建設に伴う発掘調査報告書							
巻次								
シリーズ名								
シリーズ番号								
編著者名	中村 豊・中原 計							
編集機関	徳島県教育委員会・国立大学法人徳島大学埋蔵文化財調査室							
所在地	〒770-8570 徳島市万代町1-1 TEL088-621-3164 〒770-8503 徳島市蔵本町2-50-1 TEL088-633-7236							
発行年月日	西暦2008年3月31日							
ふりがな 所収遺跡名	ふりがな 所在地	コ ー ド		北 緯	東 経	調査期間	調査面積㎡	調査原因
		市町村	遺跡番号					
庄	徳島県徳島市 蔵本町2-50-1 ほか	36201		34度 4分 9秒	134度 30分 53秒	19850902～ 19851228	1,321	徳島大学蔵 本団地動物 実験施設建 設に伴う発 掘調査
所収遺跡名	種 別	主な時代	主な遺構	主な遺物	特 記 事 項			
庄	集落	弥生時代前期	用水路1 杭列2	弥生土器・石器	弥生時代前期の用水 路。灌漑用の杭列2基 検出。			
		弥生時代後期～ 終末期	流路1 土器棺墓4	弥生土器・石器・木 製品	弥生時代終末期の自然 流路から、多量の土 器・木製品が出土。			

2008年3月31日印刷・発行

庄（庄・蔵本）遺跡

— 徳島大学蔵本団地動物実験施設建設に伴う発掘調査報告書 —

編集・発行 徳島県教育委員会

〒770-8570 徳島市万代町1-1 TEL088-621-3164

国立大学法人徳島大学埋蔵文化財調査室

〒770-8503 徳島市蔵本町2-50-1 TEL088-633-7236

印刷 株式会社教育出版センター

〒771-0138 徳島市川内町平石流通団地27番地 TEL088-665-6060