



(1)塚1号



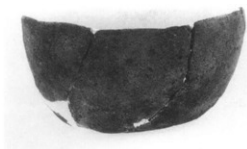
(2)塚1号



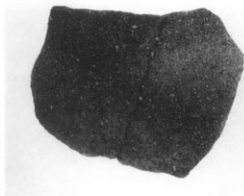
(1)塚1号



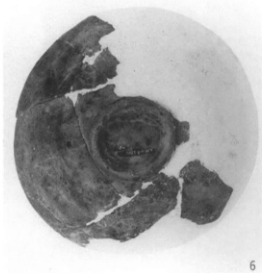
(2)塚1号



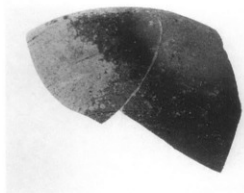
1



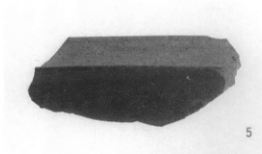
2



6



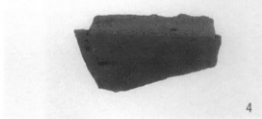
3



5



7



4



25



17



47





(1)利生寺遺跡遠景



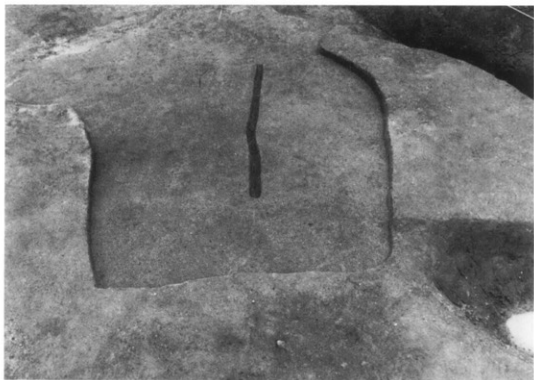
(2)散布していた五輪塔群



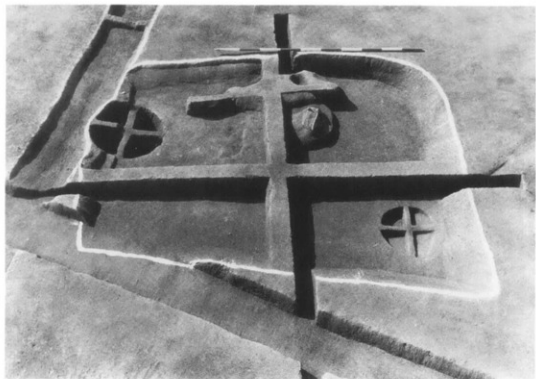
(1) 利生寺遺跡II区遺構検出状態



(2) S B 01



(1) S B 02



(2) S B 03

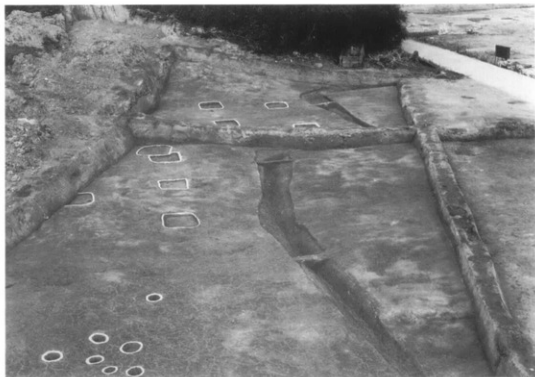




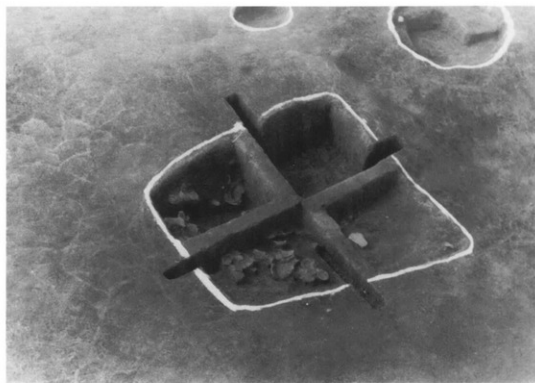
(1) S B 03粘土塊



(2) S B 03土坑



(1) 方形柱穴群



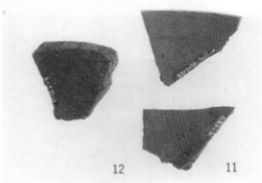
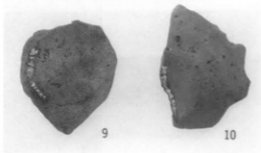
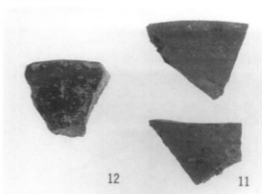
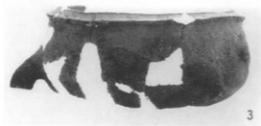
(2) S K 07

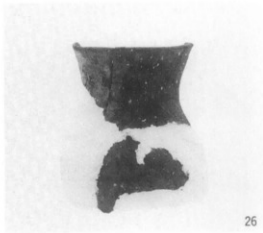


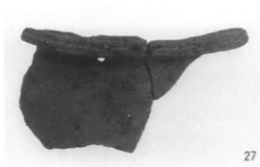
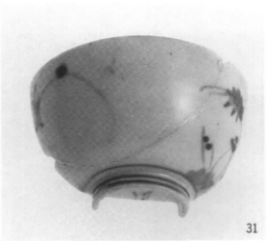
(1) S E 01

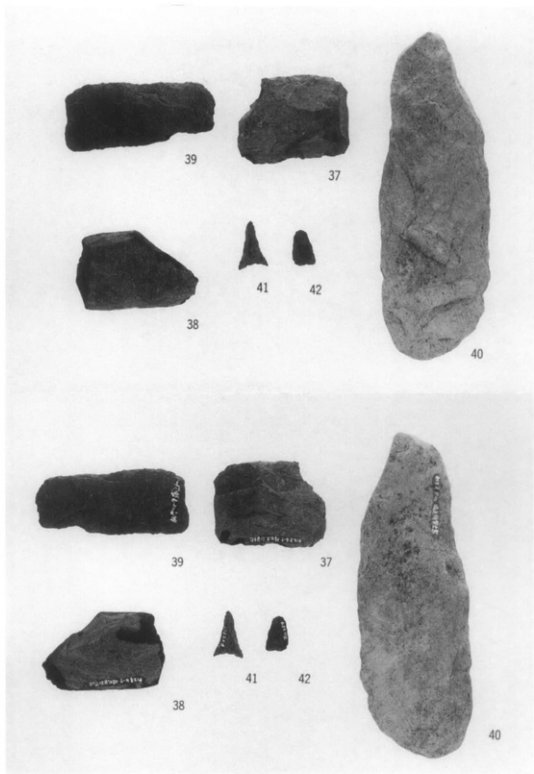


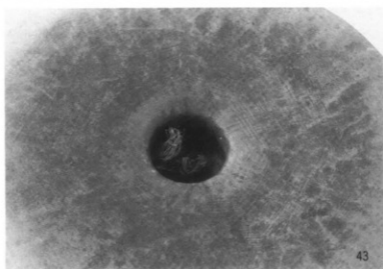
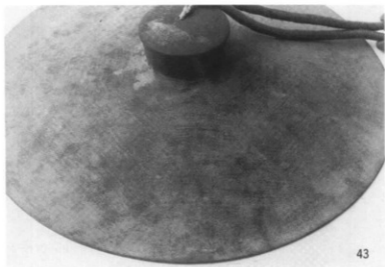
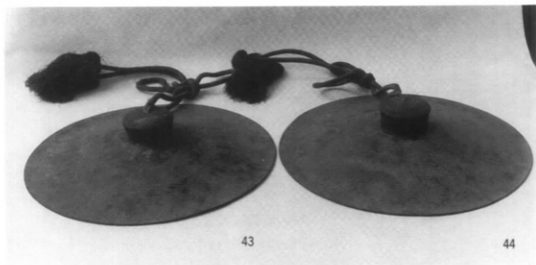
(2) S E 01











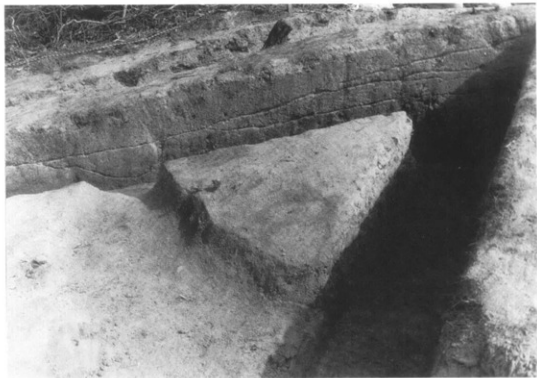




(1)利生寺古墳遠景



(2)利生寺古墳



(1) B トレンチ



(2) 石室掘り形



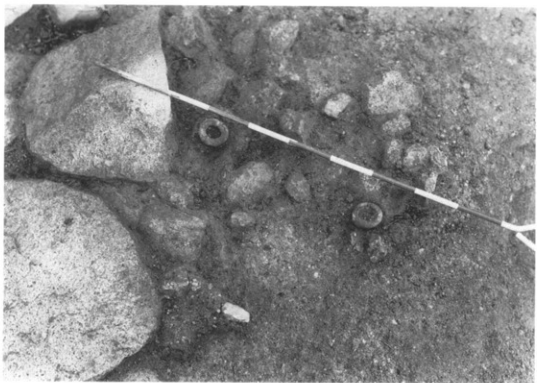
(1)石室掘り形



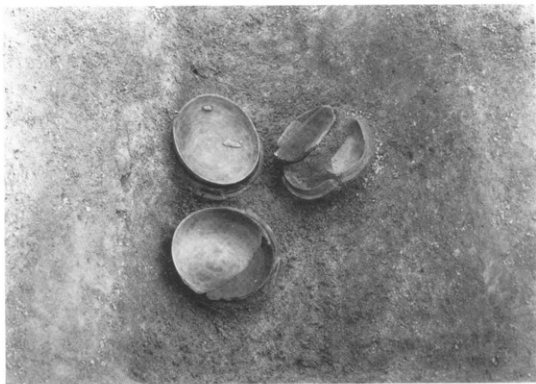
(2)排水溝蓋石



(1)排水溝土層



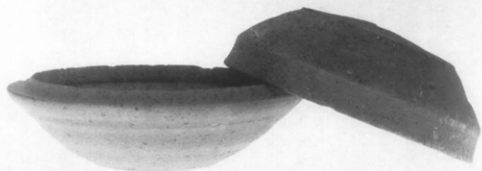
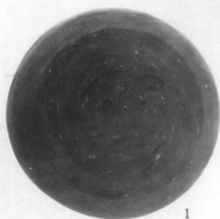
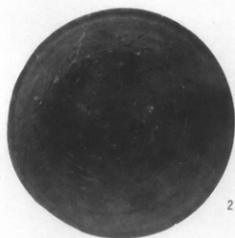
(2)銅環出土状態



(1)排水溝内須恵器出土状態



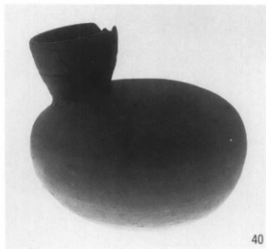
(2)発掘・実測作業風景



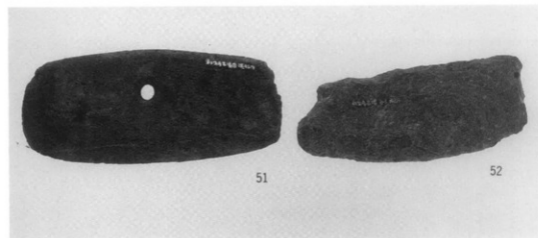
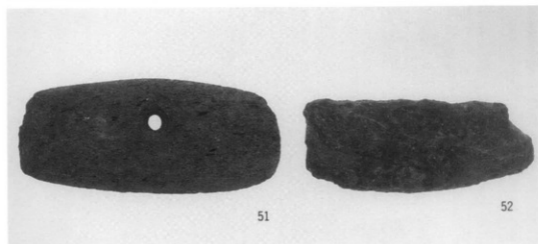
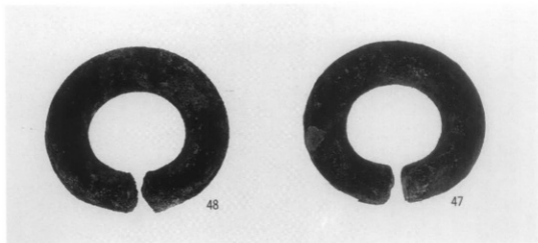
10

21











(1)北条遺跡試掘風景



(2)トレンチ土層

四国横断自動車道建設に伴う  
埋蔵文化財発掘調査報告

第二冊

大 門 遺 跡  
矢ノ岡 遺 跡  
利生寺 遺 跡  
利生寺古墳  
北 条 遺 跡  
道 免 塚 跡

昭和62年3月31日 発行

編集 香川県教育委員会事務局文化行政課  
高松市番町4丁目1番10号  
電話 (0878)31-1111

発行 香川県教育委員会  
日本道路公団

印刷 備成光社

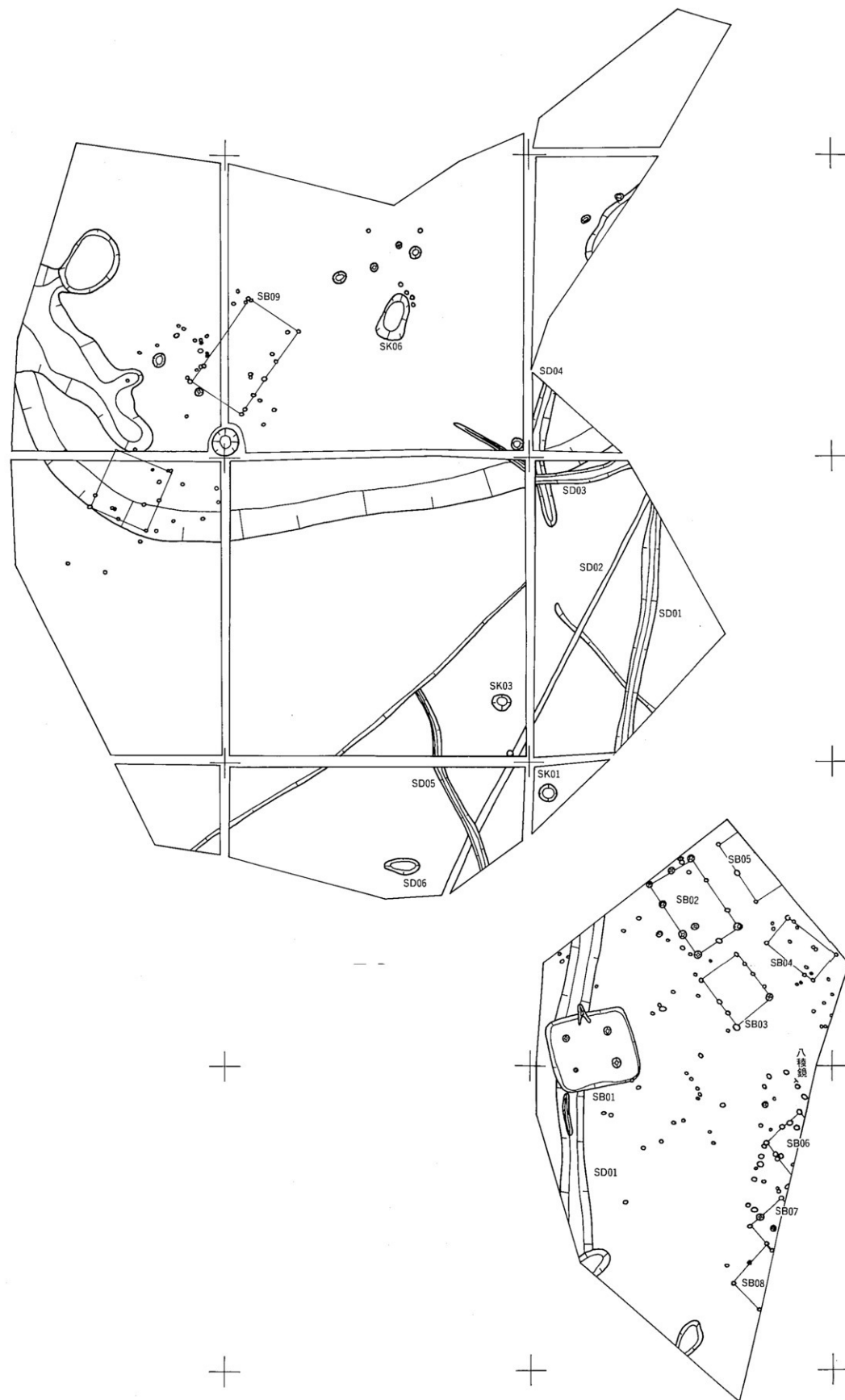




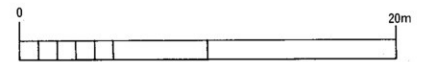
付図1 大門遺跡第1遺構面遺構配置図 (1/200)

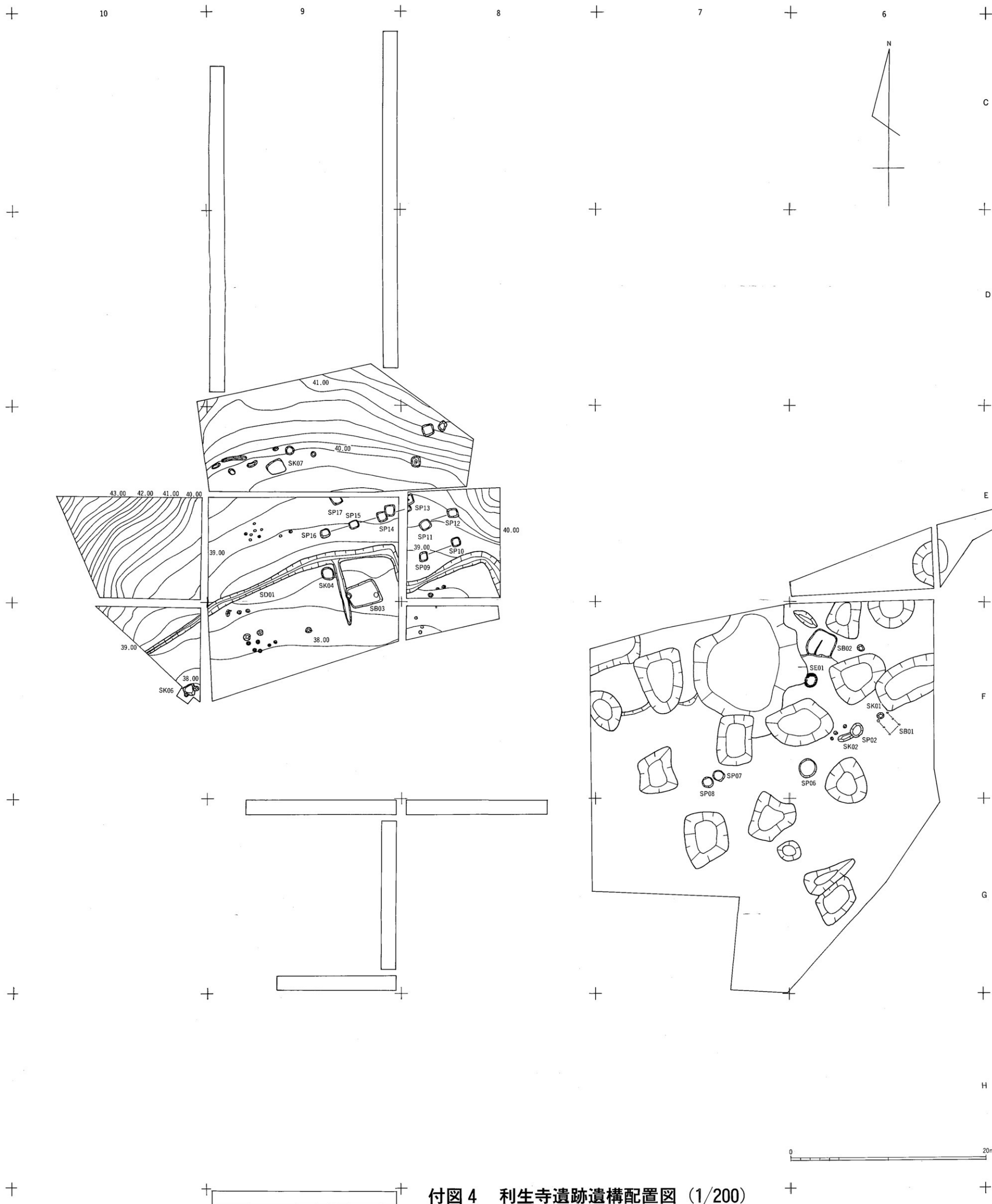


付図2 大門遺跡第2遺構面遺構配置図 (1/200)



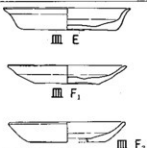


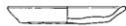

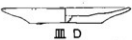
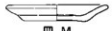
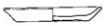



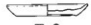
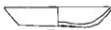


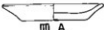




付図3 矢ノ岡遺跡遺構配置図 (1/200)



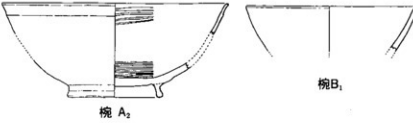

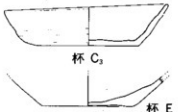
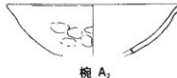
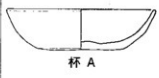
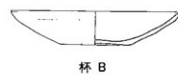
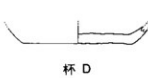
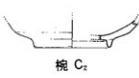
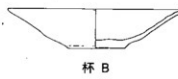
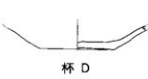
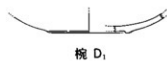
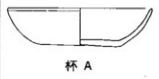
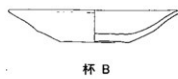
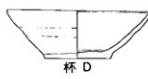


付図4 利生寺遺跡遺構配置図 (1/200)







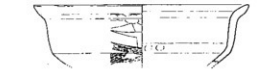






			土 師 質 土 器	
			皿	脚付皿
I	SK011			
II	矢ノ岡遺跡 SB04			
III	1 SK010	  		
	2 SD09-010	  		
	3 SD02 黒色土層	    		
	4 SD02 砂質土層 SD08	    		

付図5 大門遺跡出土土師質土器等編年図(1) (1/3)

			土 師 質 土 器				土 師 質 土 器      黒 色 土 器      瓦 器      瓦 質 土 器				
I		SK011						 碗 A <sub>2</sub> 碗 B <sub>1</sub>			
II		矢ノ岡遺跡 SB04									
III	1	SK010	 杯 C <sub>2</sub> 杯 E					 碗 A <sub>1</sub>			
	2	SD09・ 010	 杯 A		 杯 B	 杯 D	 碗 C <sub>2</sub>				
	3	SD02 黒色土層			 杯 B	 杯 D				 碗 D <sub>1</sub>	
	4	SD02 砂質土層 SD08	 杯 A		 杯 B	 杯 D					

付図6 大門遺跡出土土師質土器等編年図(2) (1/3)

			土 師 質 土 器			
			盤	播 鉢	鍋	釜
I		SK011				
II		矢ノ岡遺跡 SB04				
III	1	SK010				
	2	SD09・ 010				
	3	SD02 黒色土層				
	4	SD02 砂質土層 SD08	 盤 A  盤 B	 播鉢 A  播鉢 B	 鍋 A  鍋 B	 鍋 E  釜 A  釜 B

付図 7 大門遺跡出土土師質土器等編年図(3) (1/6)