

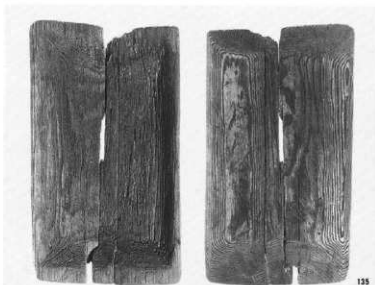
135-136-剝物

137-139

138 凹筒状容器

140-141 杓子形木製品

140-2 同 凹み部



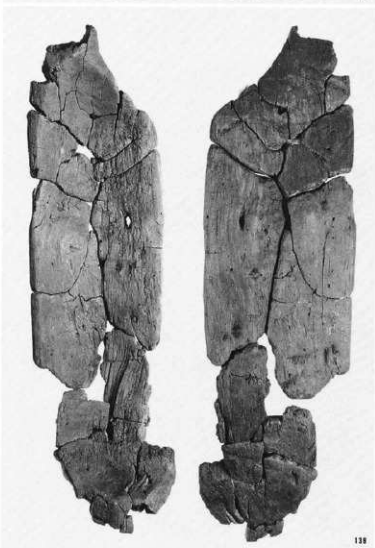
135



137



136



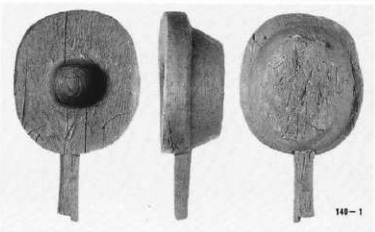
138



139



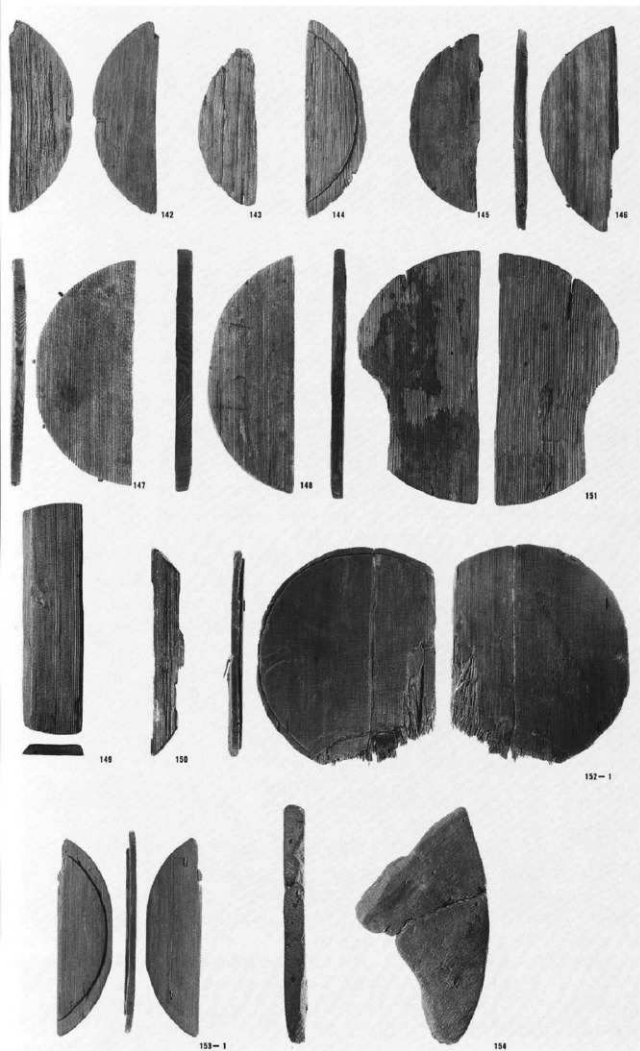
141



140-1



140-2



155-160 曲物

151-2 同カキシブ

152-2 同刃物キズ

153-2 同クレスコ

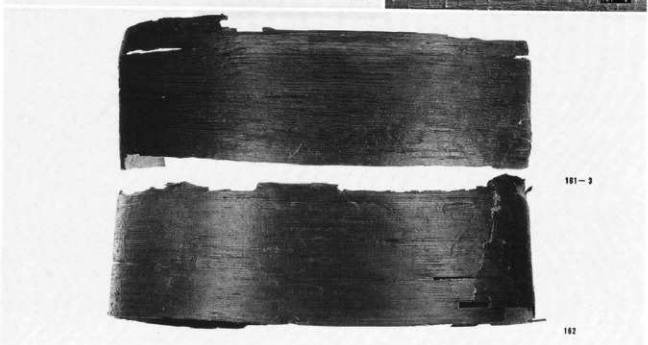
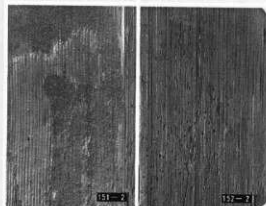
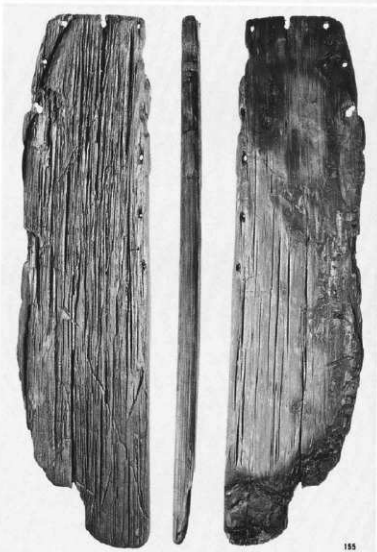
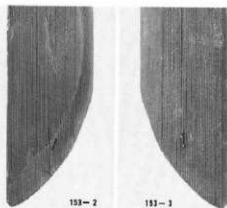
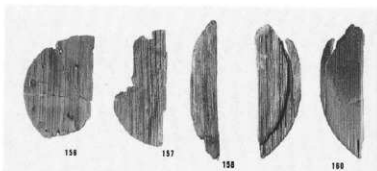
153-3 同クレスコ  
裏面

161-1 同ケビキ線

161-2

161-3 同割板

162



163・164・撿物

168・169

176-1 馬形

176-2 同墨書



169



163



164



168



176-2



176-1

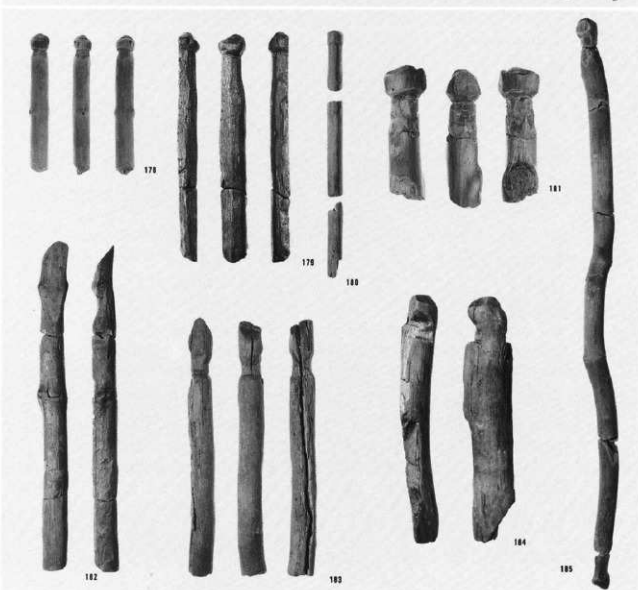
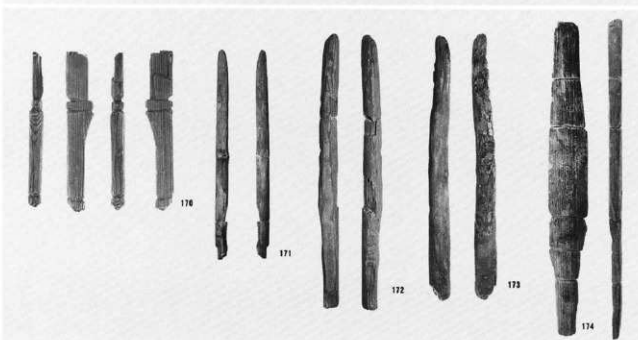
175 鳥形

170~173 刀形

174 刺形

178~185 有頭棒状  
木製品

175



182

183

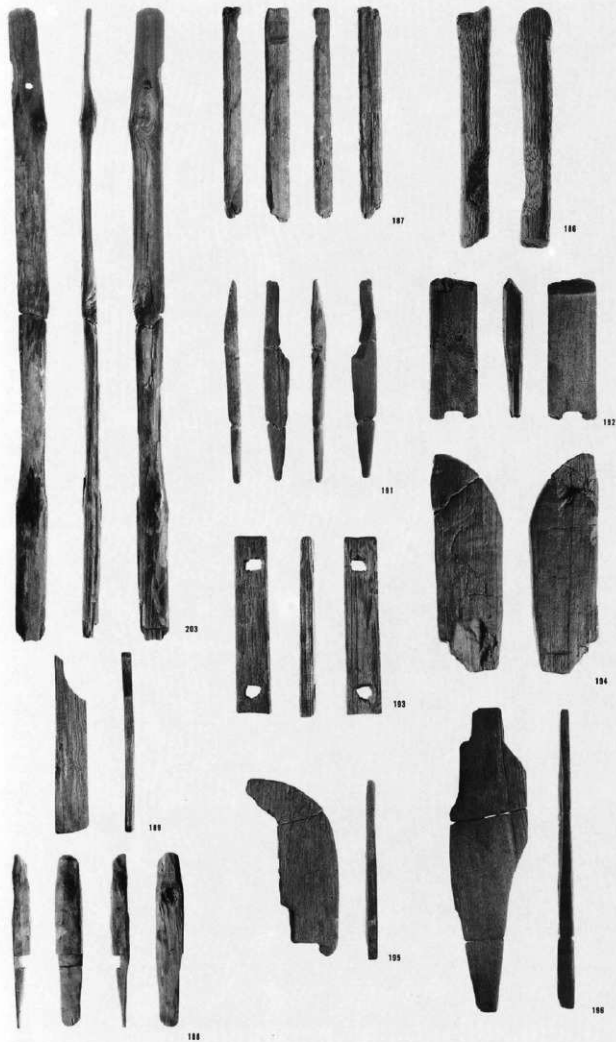
184

185

186~189 用途不明品

191~196

203



190・用途不明品

197~202・

204



197

198



201



199



200



202



199

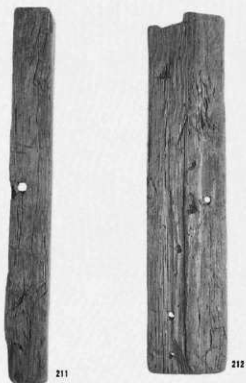
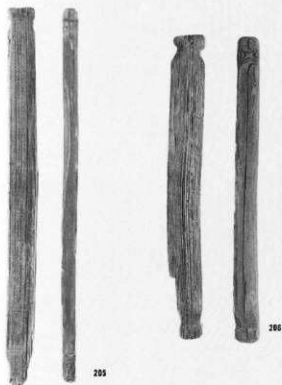
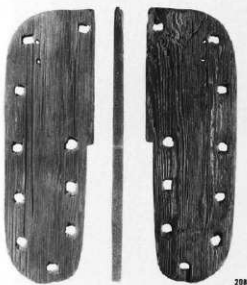
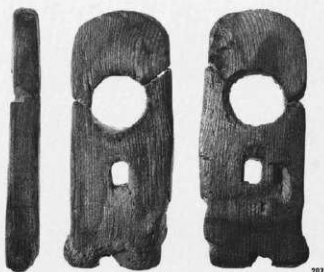


204

205~209・用途不明品

211~212・

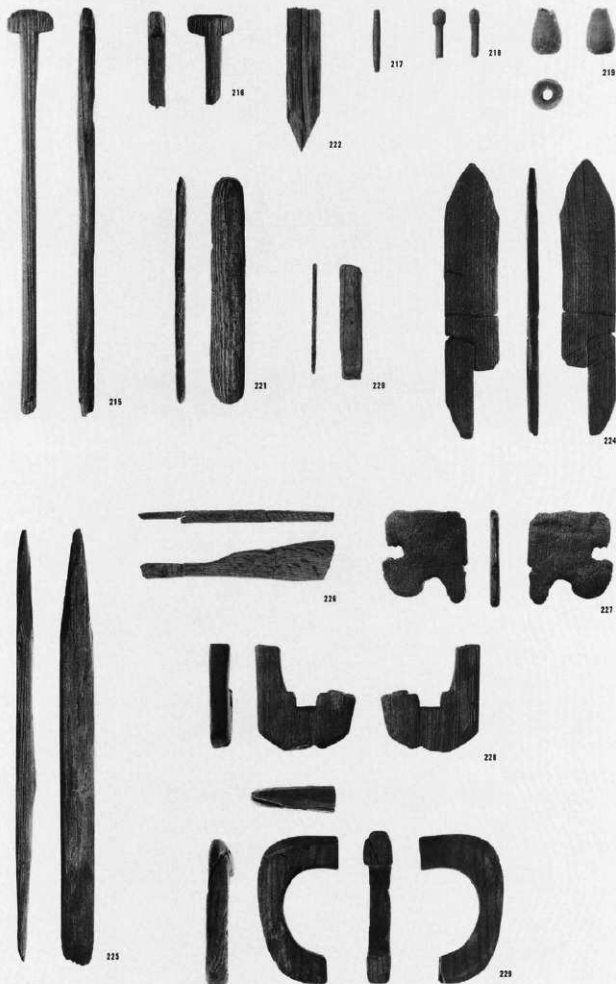
214





215~222・用途不明品

224~229





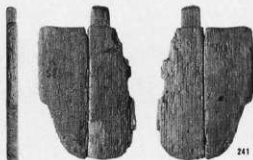
230



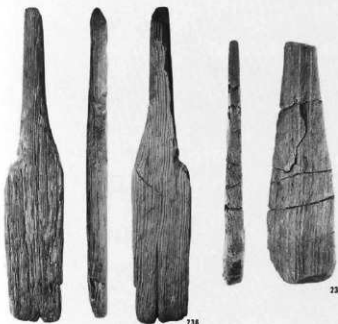
238



240



241



236



238



233



231



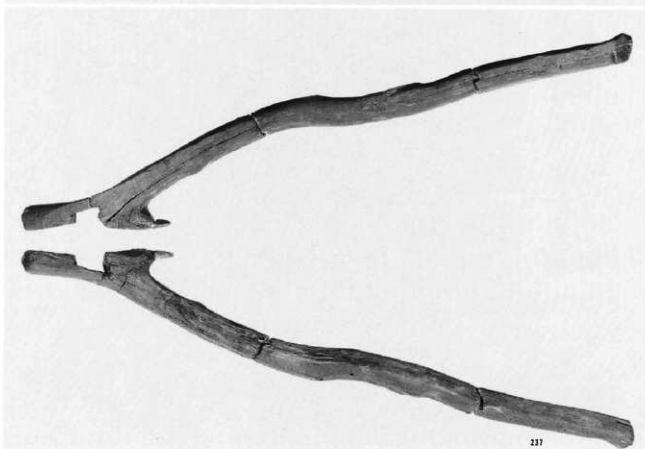
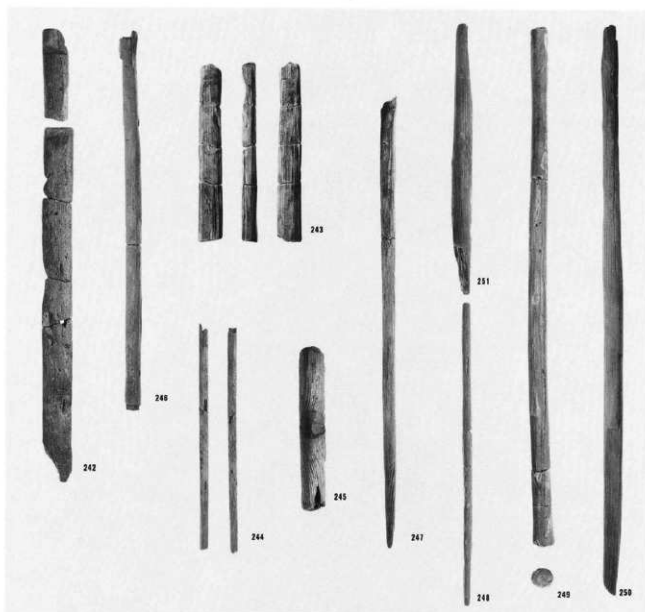
232



234

237・用途不明品

242～251





253



254



255



258



257



259



256

260・261・用途不明品

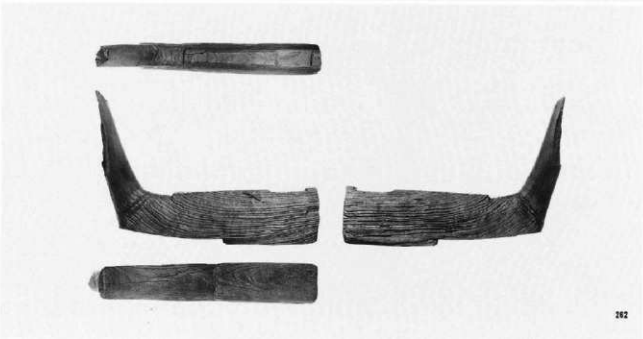
262



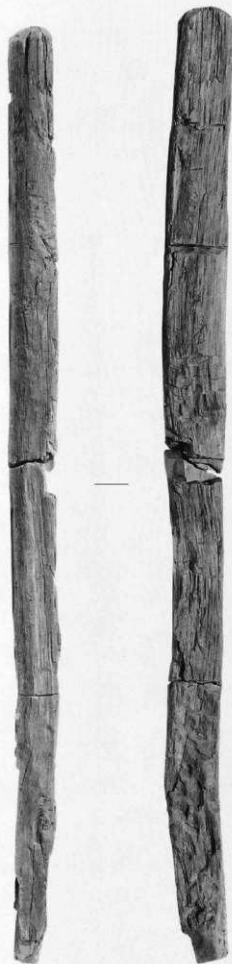
260



261



262



306



306  
拡大



306  
拡大

整材

加工板



417  
拡大



417



418



418  
拡大



310



312



318

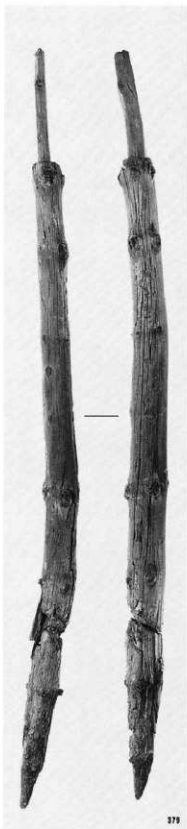


316

整材・柱



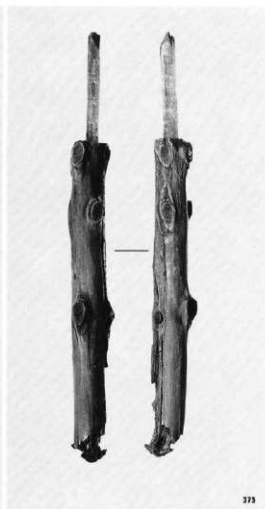
柱



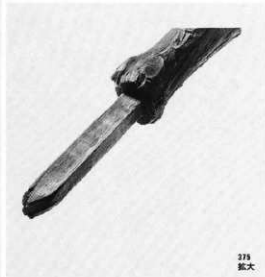
375



376



377



378  
拡大



379  
拡大



378  
拡大



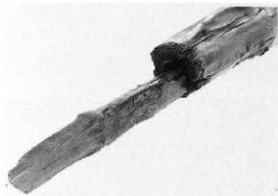
377



378



382

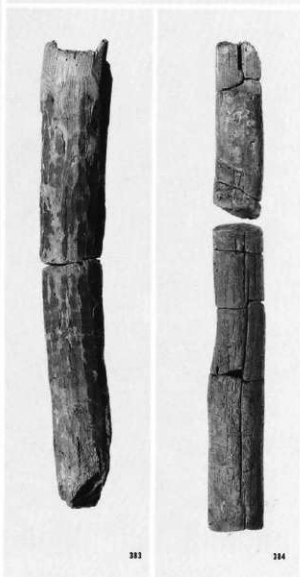
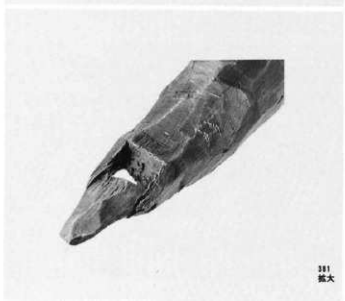
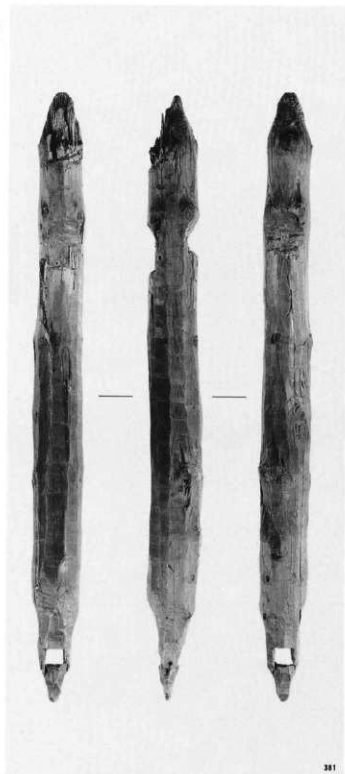


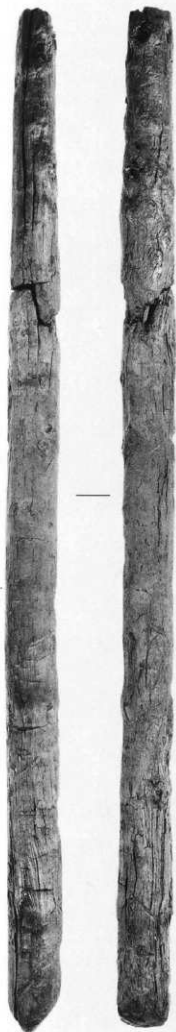
377  
拡大



378  
拡大

柱





386

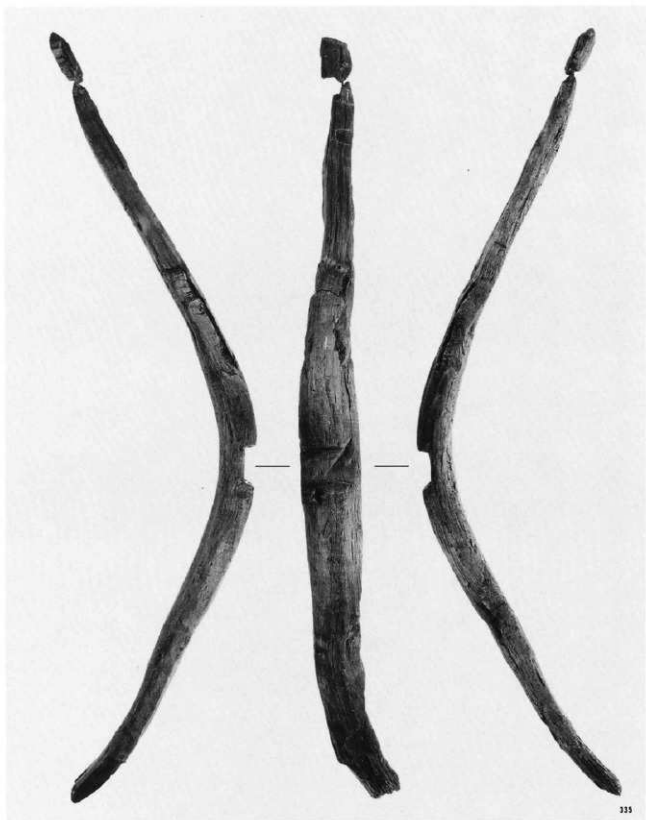


387



388

二重梁



335



335  
拡大



335  
拡大

桁  
台輪



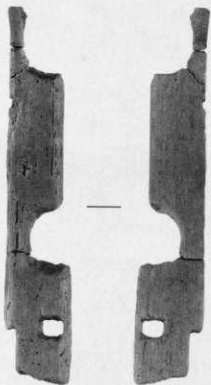
324



324  
拡大



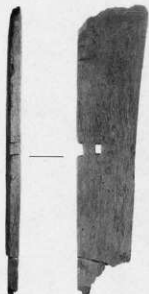
324  
拡大



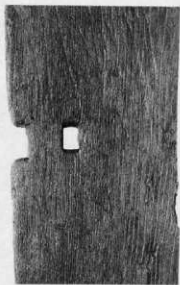
325



326



321



321  
拡大

台輪



320



322



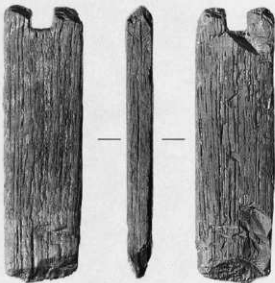
322  
拡大



320

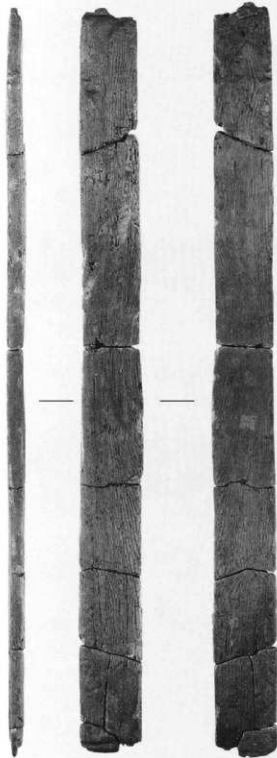


323  
拡大



321

床板



348



348  
拡大



349  
拡大



350



351



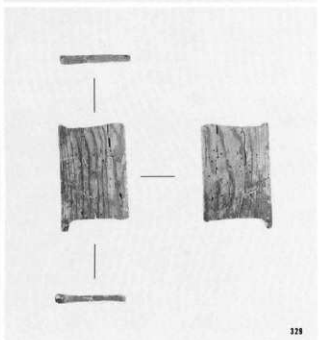
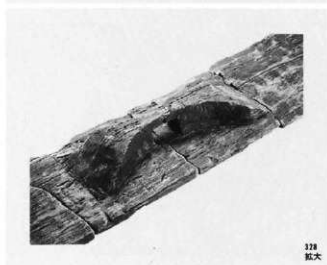
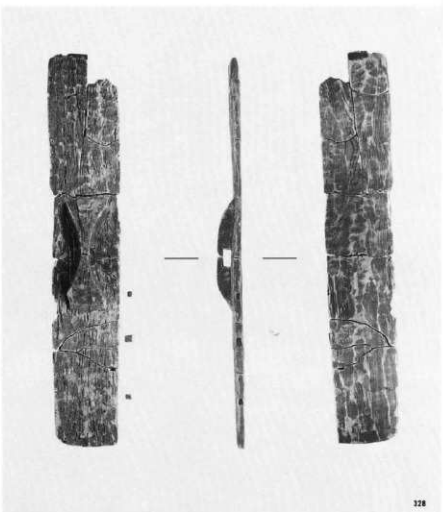
352  
拡大

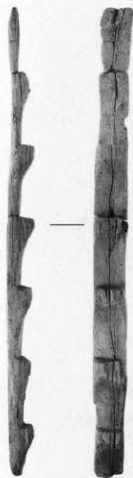


353  
拡大

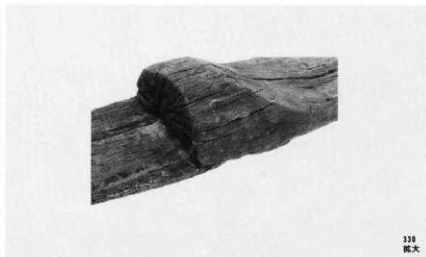


屏板





330



338  
拡大

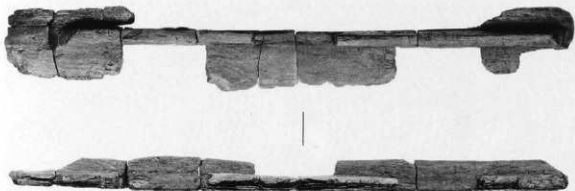
梯子  
榫・嵌放



332

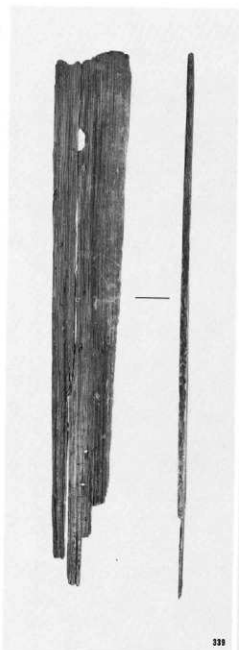


320

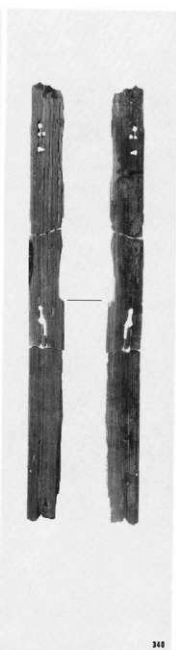


327

壁板



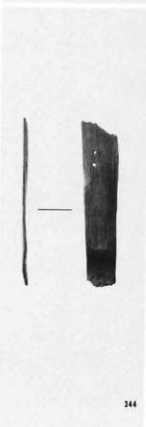
339



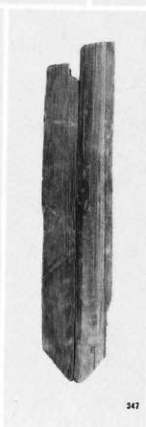
340



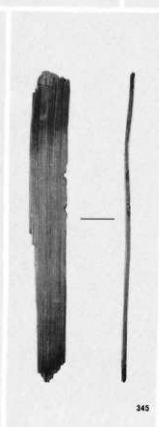
341  
拡大



344



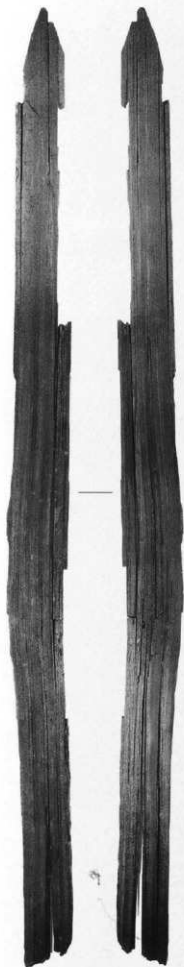
347



345



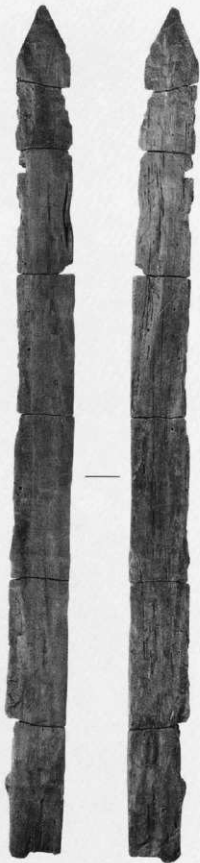
343  
拡大



337

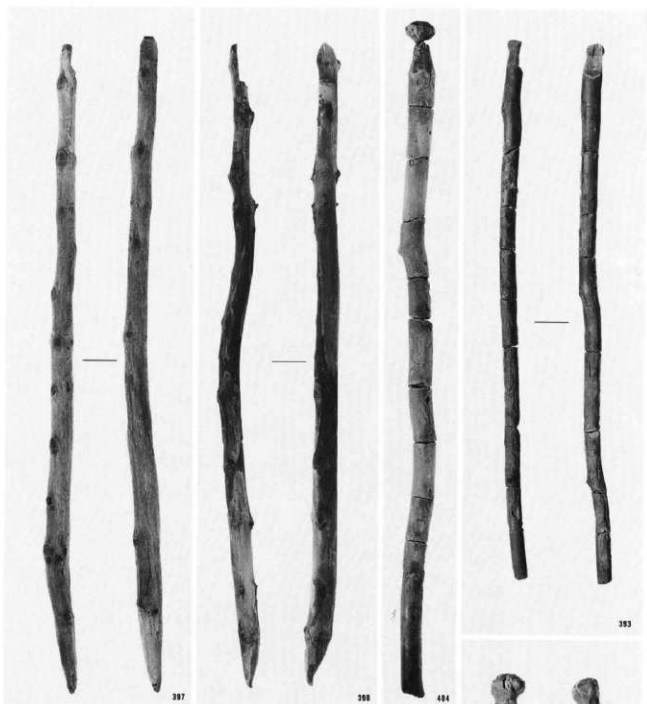


338



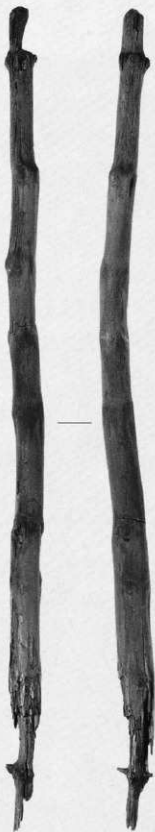
339

垂木





300



300



302



305



306  
拡大

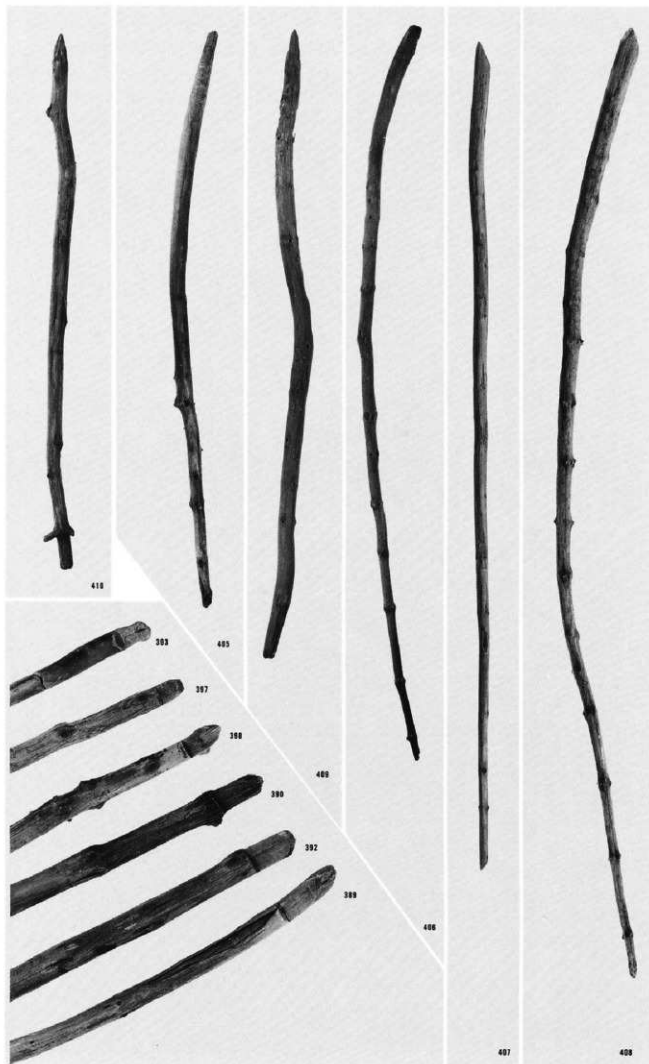


307  
拡大

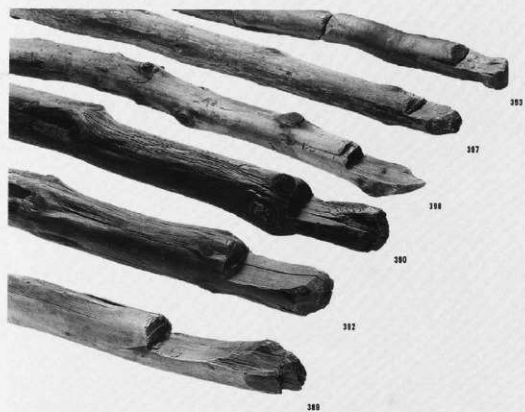


308  
拡大

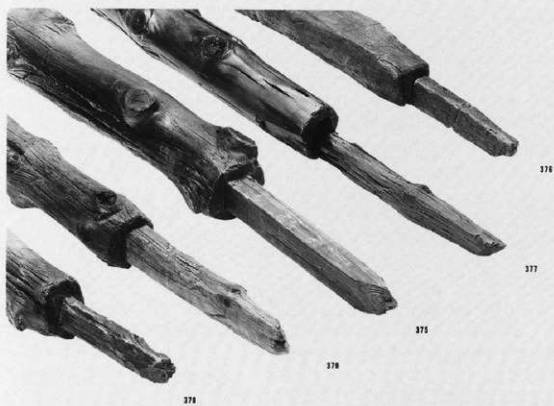
垂木



垂木納拡大

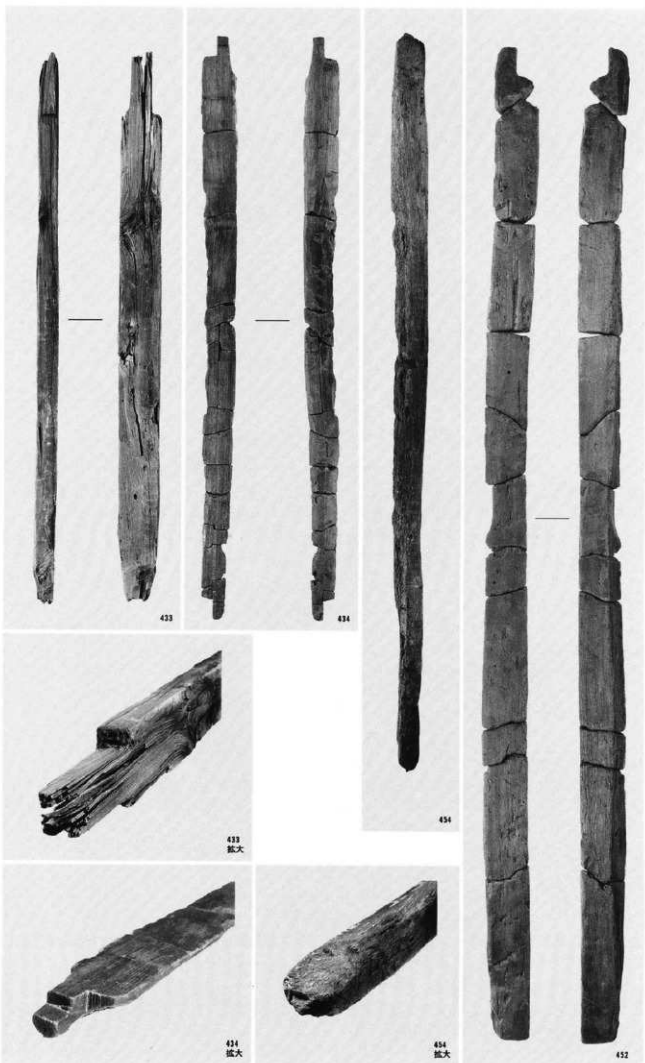


柱枿拡大

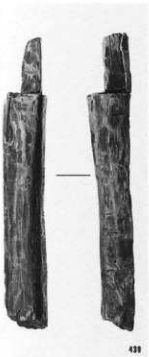




縦材と横架材  
(柵付)



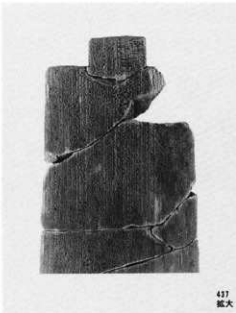
縦材と横架材  
(杓及び杓穴付)



438



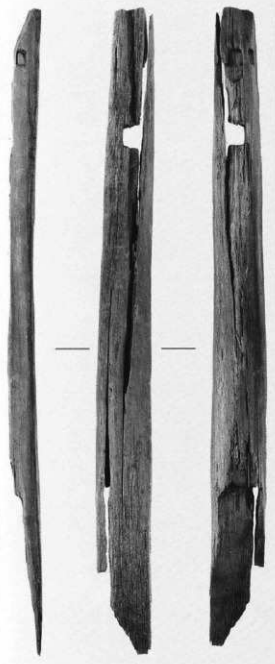
439  
拡大



437  
拡大



437



435



435  
拡大



435  
拡大



438

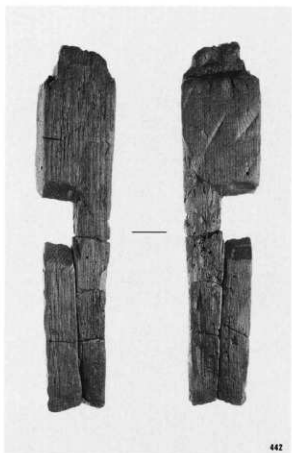


440



440  
拡大

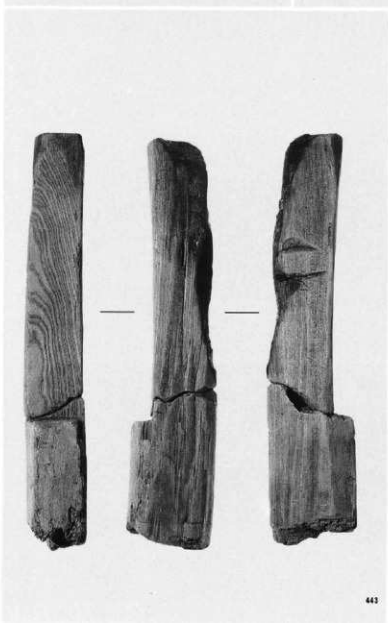
加工材



442



441



443



444



467



472



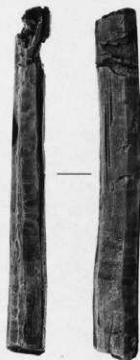
436



432



461

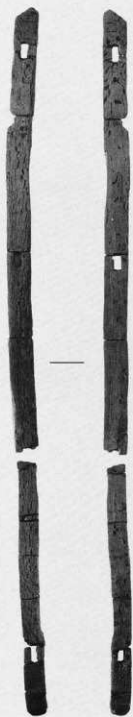


460



358

加工材



447



448



449



450



448  
拡大



450



446  
拡大

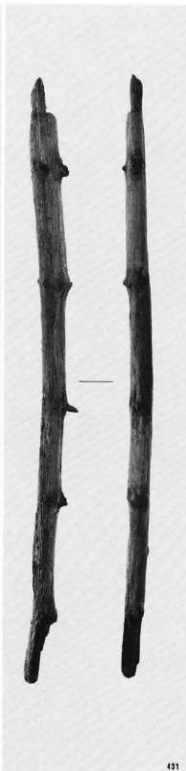
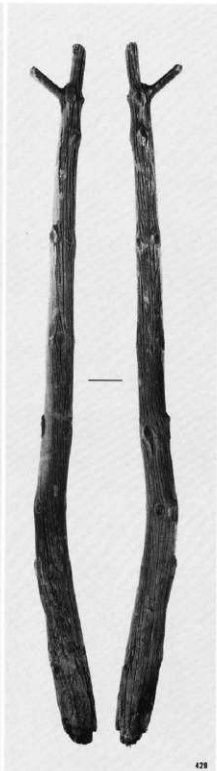


449  
拡大

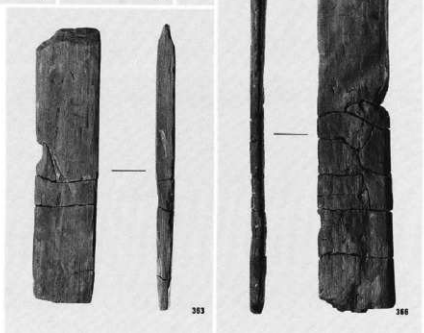


450  
拡大

小屋組の形成材  
(推定)



垂木  
床板





原石

1. SG 3

2. SD58

石核

3(1), SD79

剥片・碎片

4. IVS 11

5. SB1479

6. SB59

7. SB1124

8. SB504

9. IVS 3

10. SB1485

11. SB1482

12. SD47

13(2), VIN17

14(3), SB45

網型管玉

15(4), IVS 3

石製指輪

16(5), SB1483

(1:1)

( ) は遺物図版

番号に対応する



3  
(1)



4



5



6



7



8



9



10



11



12



13  
(2)



14  
(3)



15  
(4)



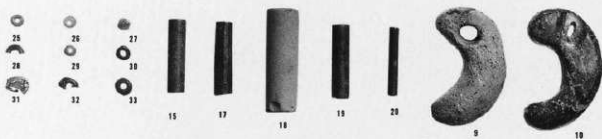
16  
(5)



弥生時代後期—  
古墳時代前期玉類  
SB1447 2号人骨  
(6・7・11・12・  
13・21~24)  
同3号人骨  
(8・14)

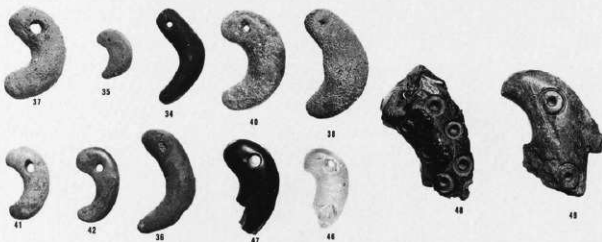


9. SB81  
10. NR 3  
15. SB82  
17. SB1456  
18. SD63  
19. VII F 6  
20. IVW17  
25. SB 5  
26. SB102  
27. SB1464  
28. SB1650  
29. SD 1  
30. SD47  
31. SG 3  
32. SK3783  
33. SK10132



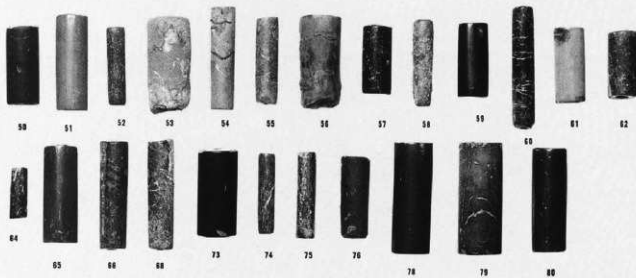
古墳時代中期以降  
勾玉

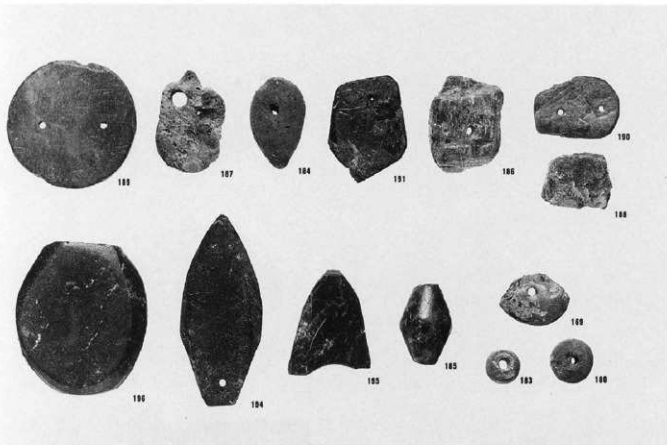
34. SB558  
35. SB139  
36. SD65  
37. SB108  
38. SB1436  
40. SB1427  
41. SB1611  
42. SD47  
46. ㊟-2 A  
47. III K 24  
48. SB449  
49. SB756



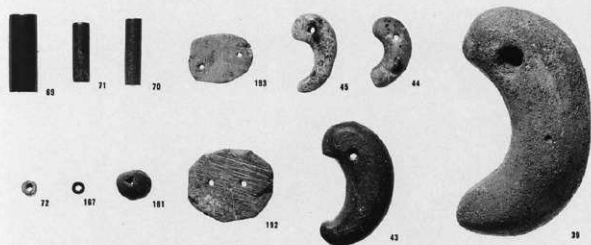
古墳時代中期以降  
管玉

50・51. SB69  
52. SB108  
53. SB127  
54. SB220  
55. SB231  
56. SB278  
57. SB288  
58. SB419  
59. SB559  
60. SB622  
61. SB638  
62. SB806  
64. SB818  
65. SB1023  
66. SB1025  
68. SD114  
73. SG 4  
74. III U 13  
75. IV S 11  
76. IV V 23  
78. ㊟-3 B  
79. ㊟-1 B  
80. ㊟-2 A





古墳時代  
石製模造品他  
169. ①-6  
180. SB203  
183. ①-6 Z  
184. SB184  
185. SB311  
186. SB529  
187. SD189  
188. III U 4  
189. SB126  
190. SB705  
191. SD304  
194. SB162  
195. IVS 11  
196. ②-3 A



SG 3 出土玉類

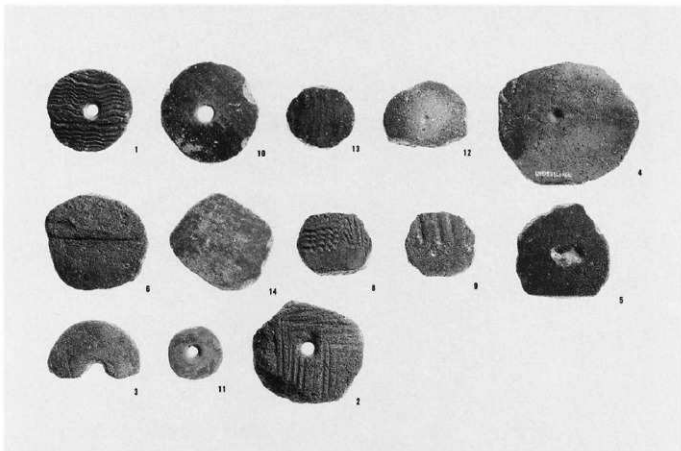


SB825出土白玉

弥生時代中期

紡錘車

- 1. SB445
- 2・3. IVS 8
- 4. SB1469
- 5. SB1484
- 6. SB1468
- 8・9. SB1483
- 10. SB454
- 11. 表採
- 12. SB837
- 13. SB459
- 14. SB1474

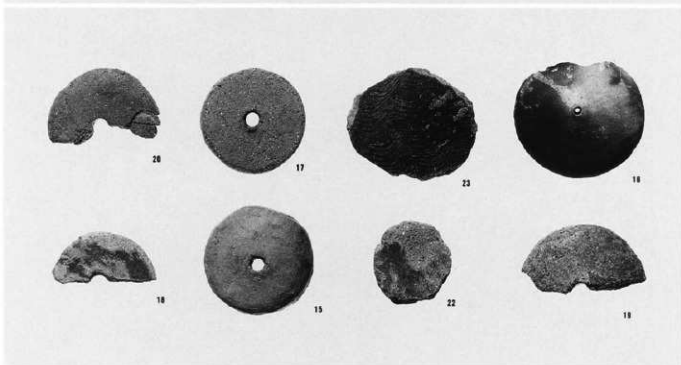


弥生時代後期

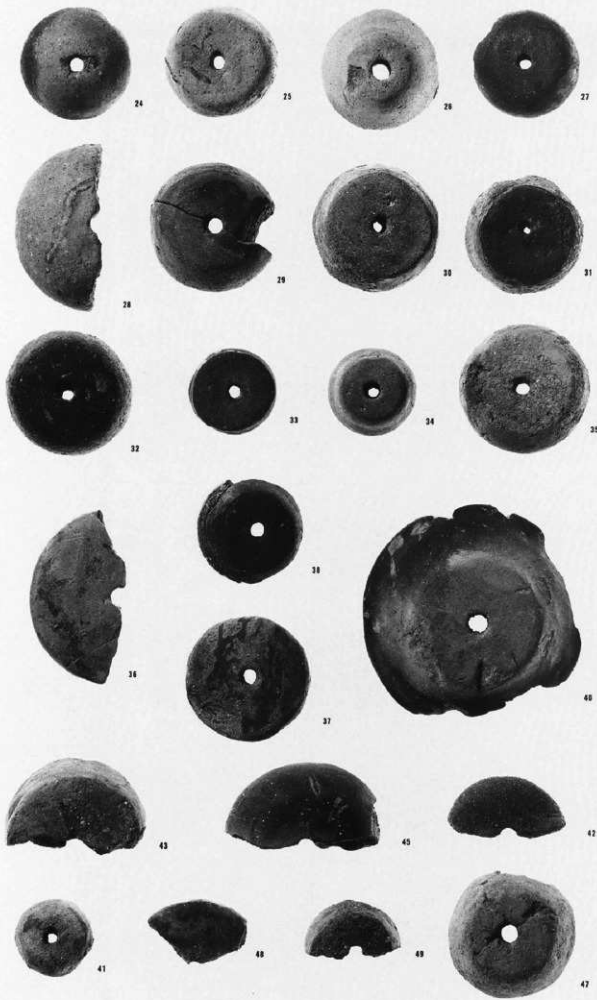
～古墳時代前期

紡錘車

- 15. SB1268
- 16. SB1634
- 17. SB1804
- 18. SB1650
- 19. SK1687
- 20. SB1266
- 22. SD72
- 23. SB1625



- 24. SB38
- 25. SB333
- 26. SB486
- 27. SB531
- 28. SB645
- 29. SB685
- 30. SB686
- 31. SB752
- 32. SB803
- 33. SB1023
- 34. SB1063
- 35. SB1075
- 36. SB1401
- 37. SB1440
- 38-40. SG 4
- 41. IVN14
- 42. IVS 8
- 43. IIIK16
- 45. IVE 18
- 47. ㊶-4 A
- 48. ㊵-1 B
- 49. 表採



古墳時代中期以降

石製紡錘車

39. SG 3

51・52. SB42

53. SB67

54. SB216

55. SB403

56. SB426

57. SB501

58. SB644

59. SB721

60. SB743

62. SB685

63. SB1103

64. SB1168

65. SB1404

66~72. SG 3

73. IV S 21

74. IVE 18

75. D-4 A

76. VII F 6



51



52



53



54



55



56



57



58



59



60



61



62



63



64



65



66



67



68



69



70



71



72



73



74



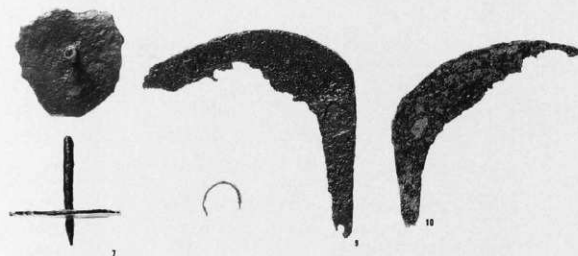
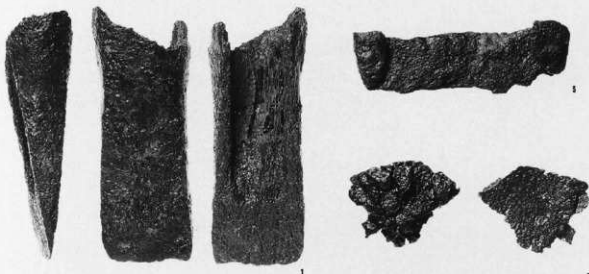
75



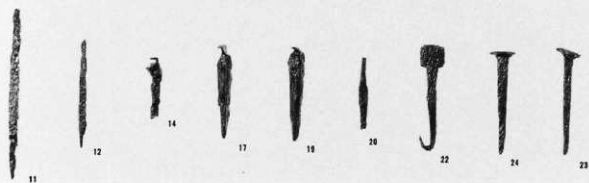
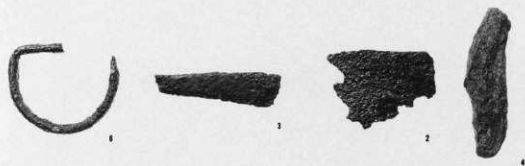
76

鉄製品

1. SB1103  
 5. SB78  
 7. SB28  
 8. SK 5  
 9 - 10. SD22



- 2・4. SG 3  
 3. SD13  
 6. SB1116



11. SB316  
 12. SD47  
 14・17・19  
 SK3797  
 20. SK655  
 22・23・24  
 SD 1

青銅製品

25. SF 6  
 26. IVN16  
 27. SB746  
 28. SB1122  
 29. IL25  
 30. IIIK21  
 31 - 32. SD65  
 33. SD611  
 35 - 47. IIIK  
 36. SB354  
 37. SG 3  
 38. SD 1  
 39. SF 2  
 40. IVN21  
 41. VIIA20  
 42. IVE  
 43. SD47  
 44. SD22  
 45. 不明  
 46. IV 2  
 48. IVM25  
 49. IVM25  
 51. III F 14  
 52. IQ22  
 54. IV 2



25

26



27



28



29



30



31



32



33



36



37



38



35



39



40



41



42



43



44



45



46



47



48



49



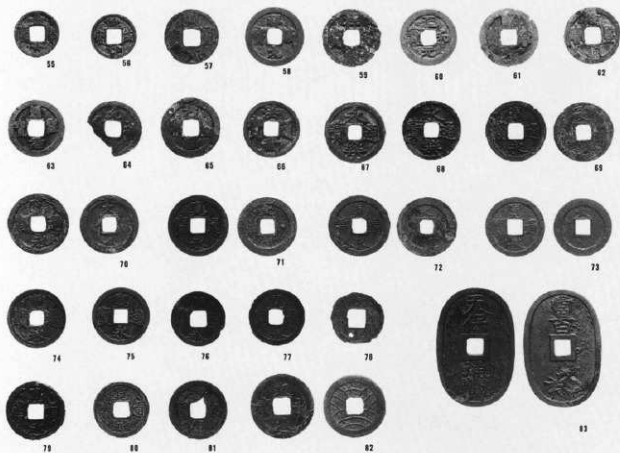
51



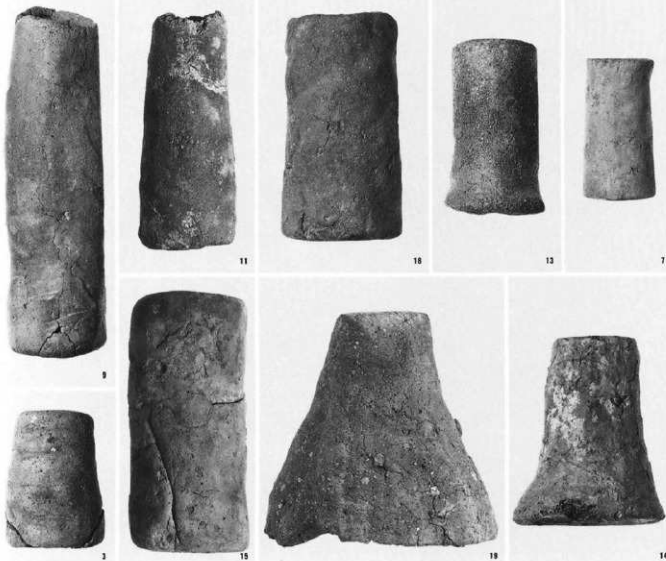
54



52



- 銭貨  
 55, IVW16  
 56, SD47  
 57, SD7  
 58, III S 区  
 59, III K 4  
 60, III 区  
 61, SK4226  
 62, III A 9  
 63・64・69・70  
 71・74・75・80  
 SD22  
 65, 66, 67  
 SK103  
 68, III S 8  
 72, IL 9  
 73, IV S 区  
 78, III G 4  
 82, IV S 16  
 76・77・79・81  
 83 不明



- 土製支脚  
 3, SB248  
 7, SB674  
 9, 表様  
 11, SB129  
 13, SB1239  
 14, SG 4  
 15, SB210  
 18, SB705  
 19, SB1023



弥生時代後期  
～古墳時代前期  
土製品

- 人面土器  
1. III P 2  
2. III P 6  
3. III P 7



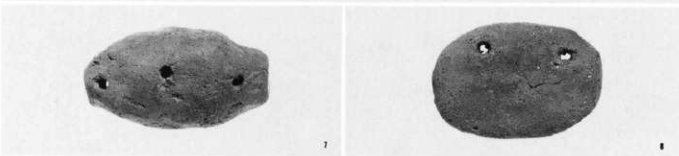
同土製匙

4. SB72  
5. IVN25  
6. SB1275  
7. IQ9



古墳時代中期  
～後期土製品

7. SB702  
8. SG4



同土錘

1. SB1  
2. SB532  
4. SB293  
6. SB128





羽口  
1・2, SB645  
3, SB278  
4・5, SB1044



碗形滓・板状鉄滓  
11, SK3658  
12, SB1044

羽口片・鉄滓片

6, 22, SK 2

7・8・9・

23~26・30

III区

13, 14, SB 5

15, SB25

16, SB148

17, SD 3

18, SD33

19, SD37

20, SD79

21, SG 4

27, IIIK21

28, IIIL 6

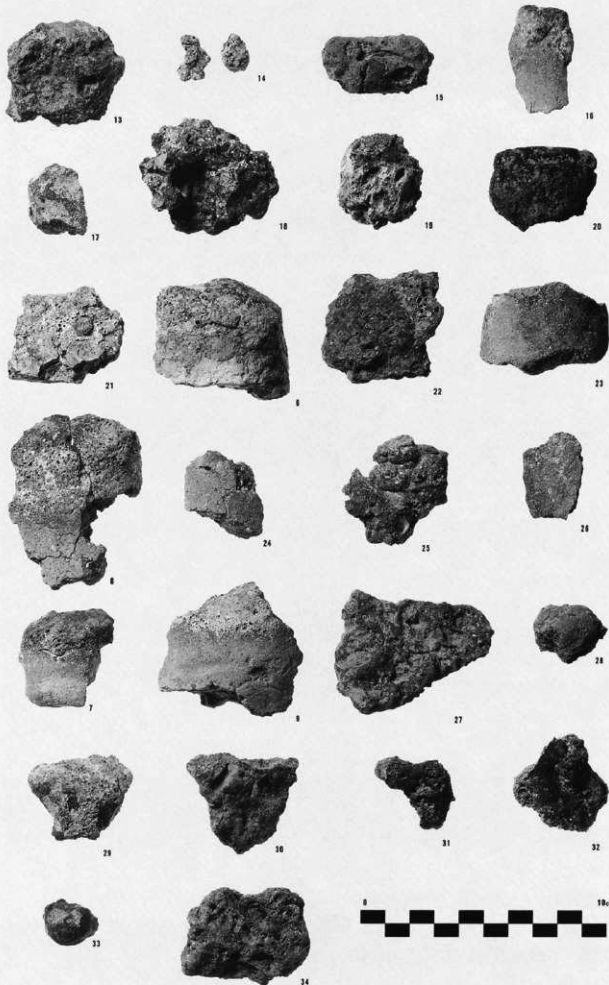
29, III P 3

31, IVM19

32, IVW 4

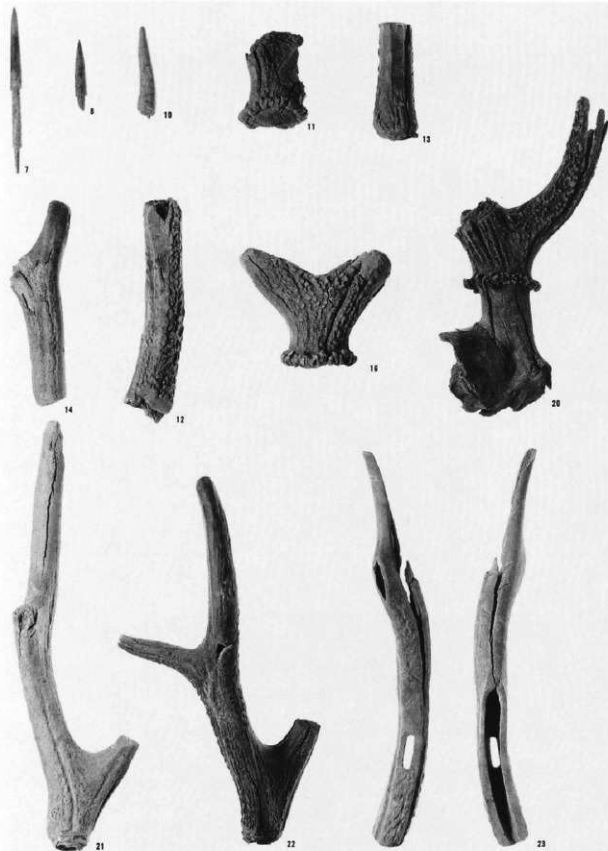
33, IVWE

34, VII B 3





住居址出土  
1. SB440  
2. SB118  
3. SB216  
4. SB317  
5. SB1460  
6. SB1650

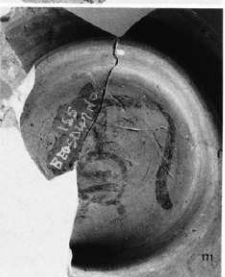
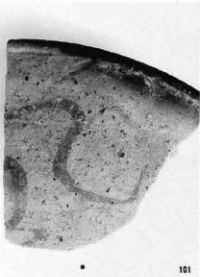
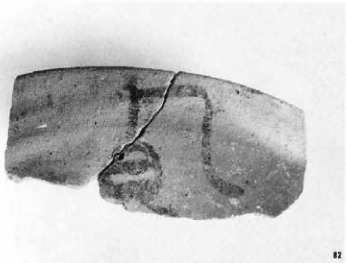


SG 3 出土

1. SD33出土  
記録木筒

2. SG3出土  
習書木筒





SD47-②  
(172~177・  
182)



172



173



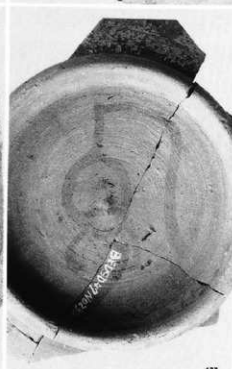
174



175



176



177

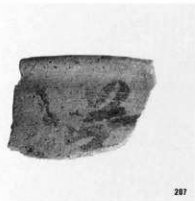
SF2  
(4)



182



4



207



208



210

SD47-㊸  
(187・189・  
192・195・  
199・202・  
206・208・  
210)



192



195



199



202



187



188



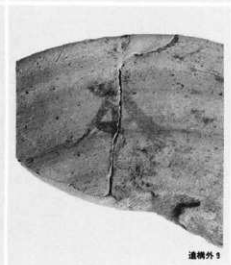
189



206



1



道標外 1

SF1(1)  
道標外 9 (IVV18)



墨書土器

SB76(1)

SD31(4)

SD47(262)

遺構外2(ⅢU13)

遺構外4(Ⅲ区)

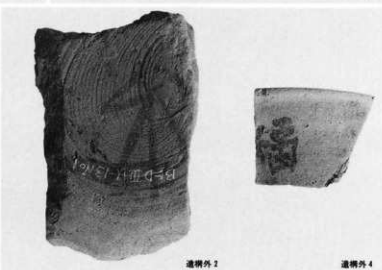


1

4



262



遺構外2

遺構外4

刻書土器

SD47(263)

遺構外18(Ⅷ区)

遺構外5(Ⅲ区)

遺構外6(Ⅲ区)

遺構外7(Ⅲ区)

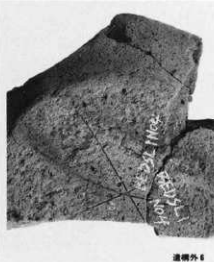
遺構外8(Ⅲ区)



遺構外18



263



遺構外6



遺構外5



遺構外7



遺構外8

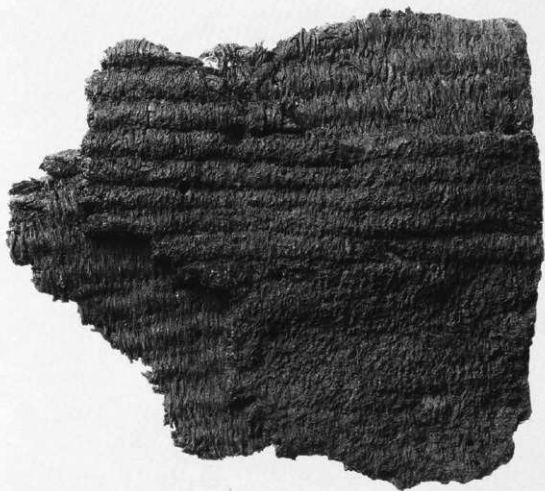
SB1468出土

1. 2枚重ね部分  
(表面)
2. 2枚重ね部分  
(裏面)

タテ糸方向  
↑  
↓

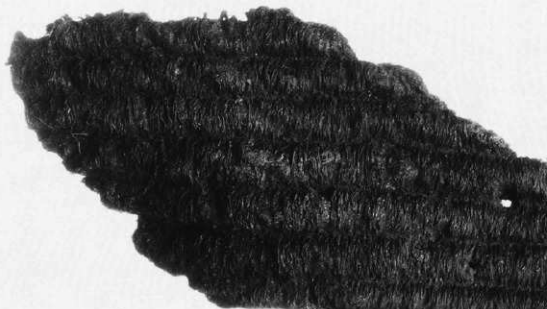


タテ糸方向  
↑  
↓



SB1468出土

- 3. 太いヨコ糸が見える部分
- 4. 太いヨコ糸側面
- 5. 太いヨコ糸の断面 (2枚重ね部分)
- 6. 裏面  
表面が平らに見える面
- 7. 表面  
表面にウネが浮いて見える面



3

4

5

6

7

長野県埋蔵文化財センター発掘調査報告書 37

上信越自動車道埋蔵文化財発掘調査報告書12

—長野市内その10—

榎田遺跡

第4分冊（写真図版）

発行 平成 11 (1999) 年 3 月 31 日  
発行者 日本道路公団  
長野県教育委員会  
長野県埋蔵文化財センター  
TEL. 026-274-3891 FAX 274 3892  
印刷 信毎書籍印刷株式会社  
TEL. 026-243-2105 FAX 243-3494

