

使用痕写真

砥石

S B215

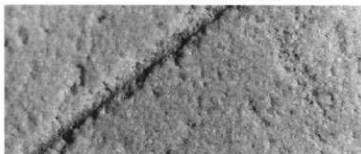
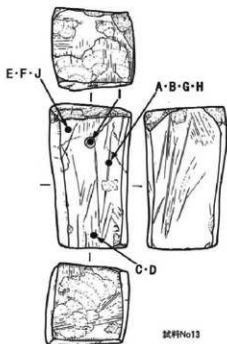
(写真A~I)

図版274-27

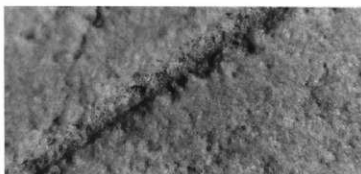
PL129-27

(A・B, 砥面溝内摩耗痕)

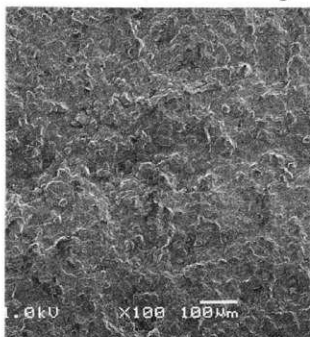
(C~F, 砥面摩耗痕)



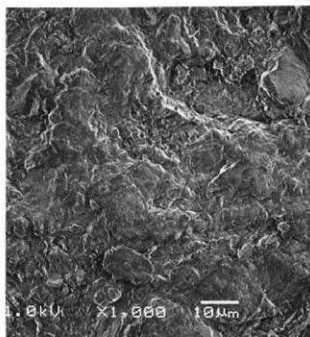
A X7.5



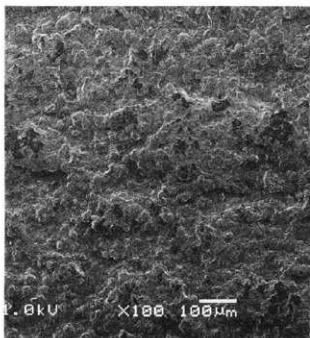
B X10



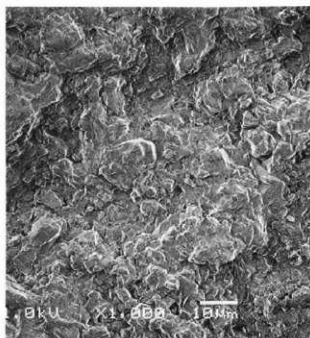
C X100



D X1000



E X100

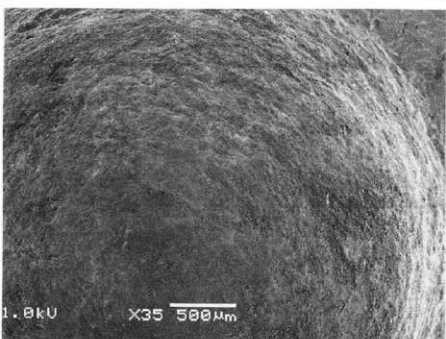
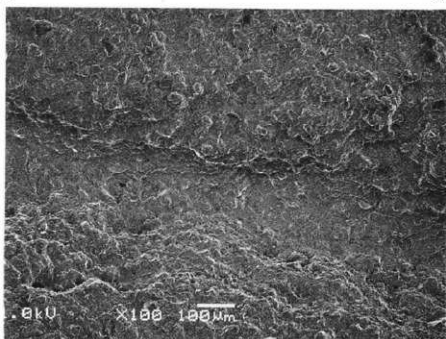
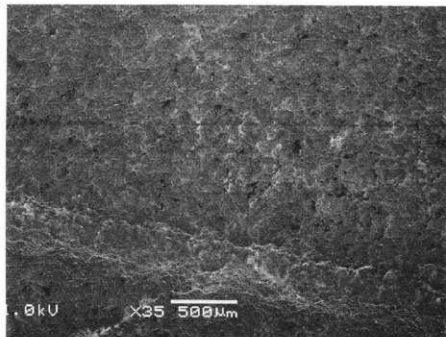


F X1000

使用痕写真

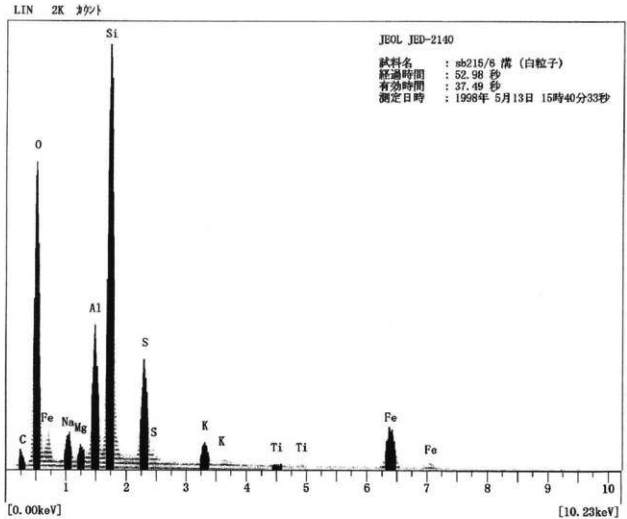
(G・H, 砥面溝内摩耗痕)

(I, 穴部研摩痕)



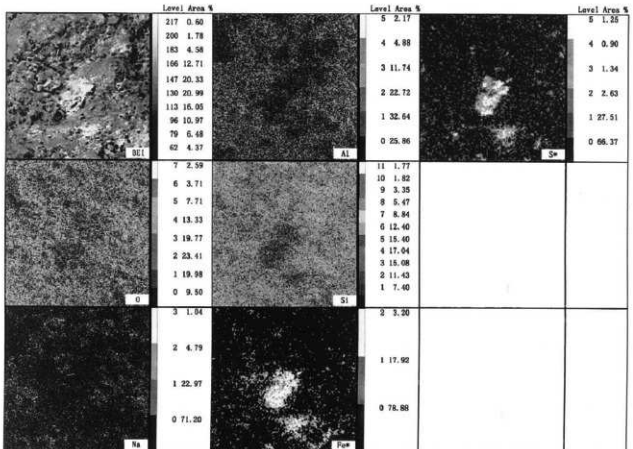
使用痕写真

(J, 砥面付着物)



J

EDX分析チャート

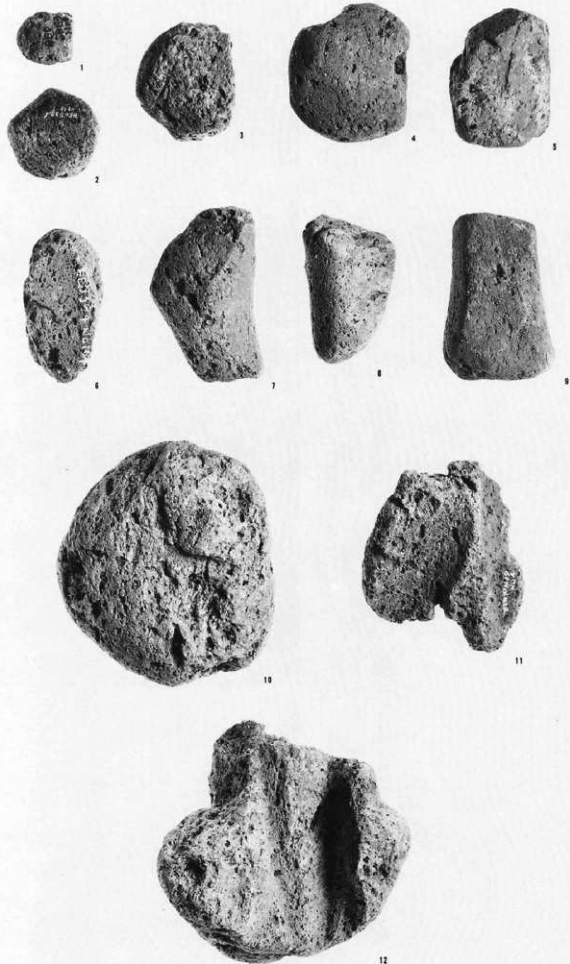


J

EDX分析図

軽石製品

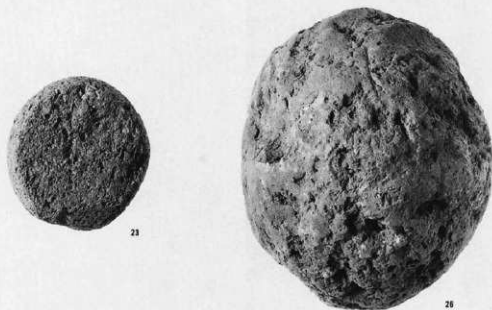
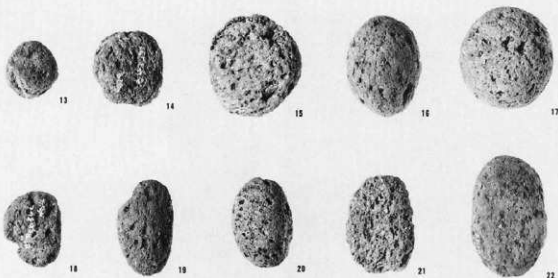
1. SB63
2. SB806
3. SB1403
4. SB 9
5. SB115
6. SG 4
7. SB380
8. SB380
9. SB1181
10. SB1448
11. IVN19
12. SB1628
(2 : 3)



軽石製品

- 13. SD47
- 14. SG 4
- 15. SD47
- 16. Z
- 17. SB1100
- 18. SD506
- 19. SD95
- 20. SD47
- 21. SK16712
- 22. SK5288
- 23. SB1068
- 24. SB1471
- 25. SB1212
- 26. SD47

(2 : 3)



24

25

磨製石斧

S B457

1. 原石
 2. 素材剥片(礫)
 3. 素材剥片(礫)
 4. 未製品G,段階
(大型蛤刃)
 5. 未製品E,段階
(扁平片刃)
- (1:2)



磨製石斧

S B 440

1. 未製品D段階
(大型蛤刃)
(2 : 3)



磨製石斧

S B 442

2. 未製品E段階
(扁平片刃)
3. 石槌
4. 石槌
Z-105と接合
P L 160
(2 : 3)



磨製石斧

S B 843

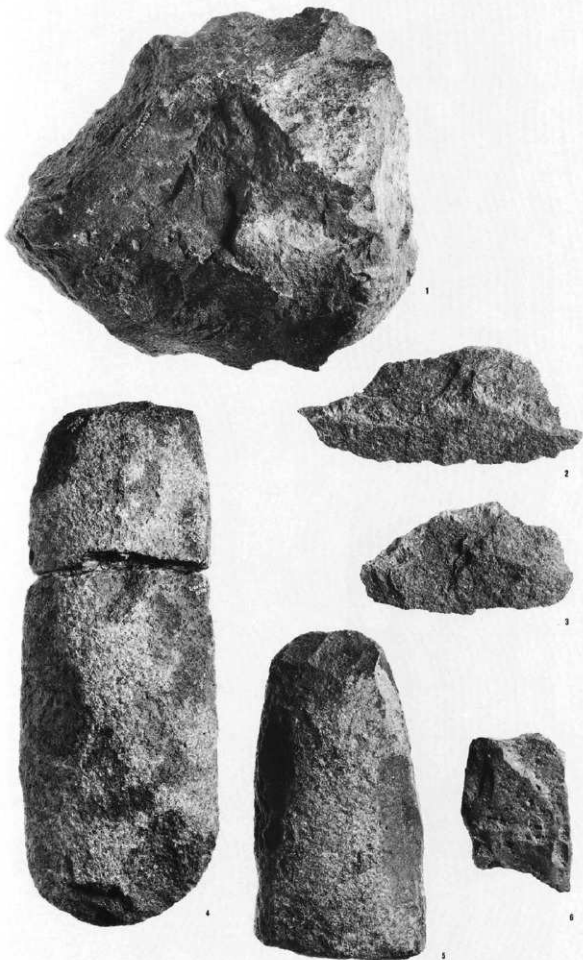
5. 未製品C段階
(大型蛤刃)
6. 剥片2種B段階
7. 剥片2種B段階
(2 : 3)



磨製石斧

S B 837

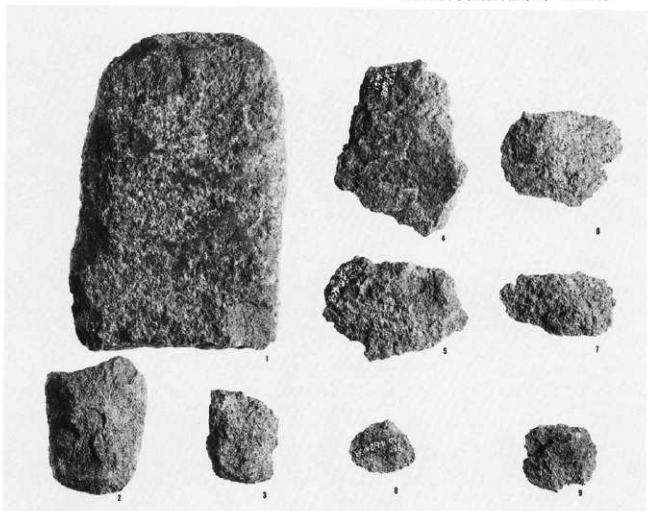
1. 素材剥片(礫)
2. 剥片1種B段階
3. 剥片B類C段階
4. 未製品D段階
(大型蛤刃)
5. 石槌
6. 未製品E段階
(扁平片刃)
(2:3)



磨製石斧

S B1468

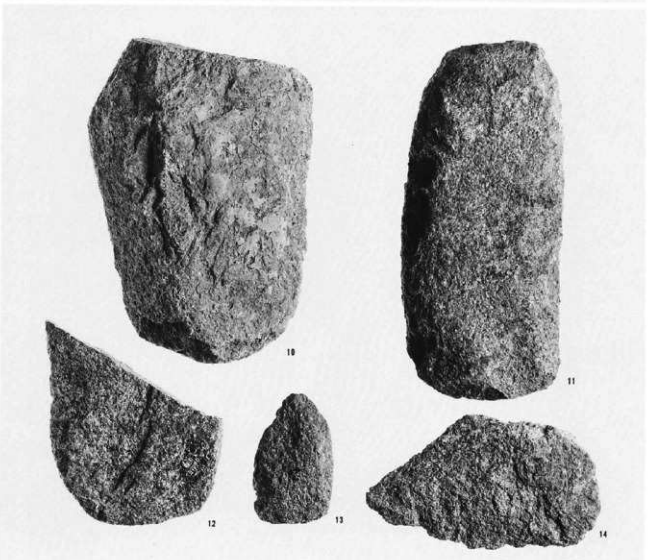
1. 未製品E,段階
(扁平片刃)
2. 未製品E,段階
(扁平片刃)
3. 未製品E,段階
(扁平片刃)
4. 剥片1種B段階
5. 剥片B類C,段階
6. 剥片B類B段階
7. 剥片B類C段階
8. 碎片B段階
9. 碎片B段階
(2:3)

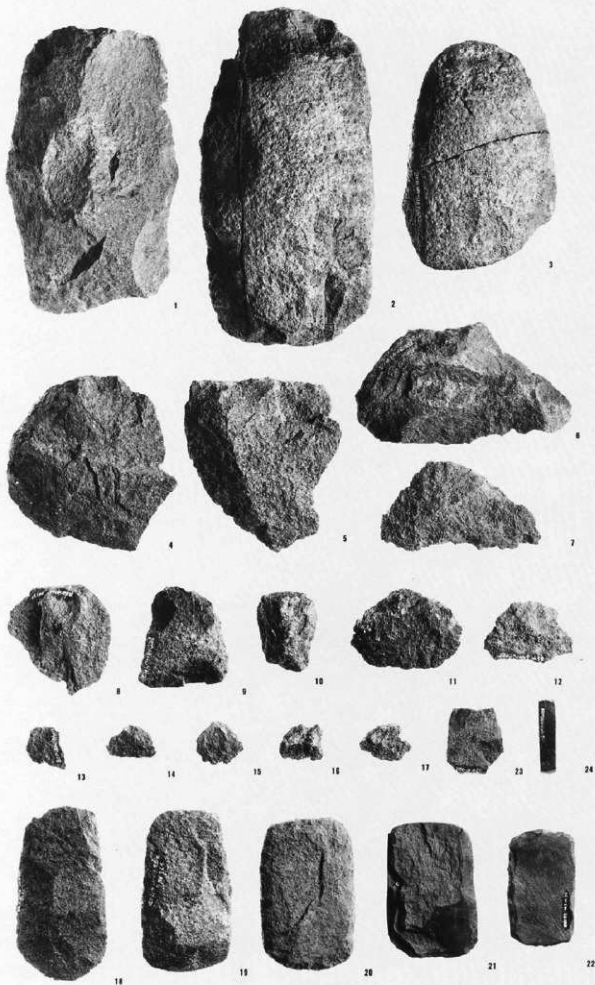


磨製石斧

S B1470

10. 未製品C,段階
(大型蛤刃)
11. 未製品E,段階
(大型蛤刃)
12. 未製品B段階
(扁平片刃)
13. 未製品E,段階
(扁平片刃)
14. 剥片B類B段階
(2:3)





磨製石斧

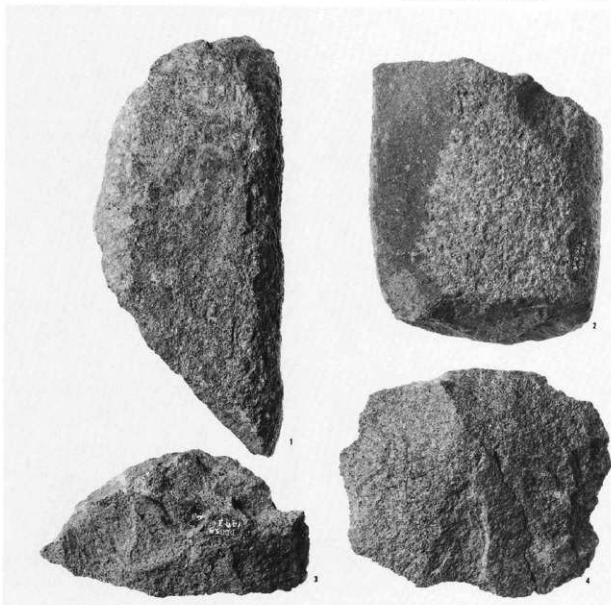
S B1469

1. 未製品B段階
(大型哈刀)
2. 未製品C段階
(大型哈刀)
3. 未製品D段階
(大型哈刀)
4. 剥片1種B段階
5. 剥片B類B段階
6. 剥片1種A段階
7. 剥片B類B段階
8. 剥片B類E段階
9. 剥片B類C段階
10. 剥片B類C段階
11. 剥片1種C段階
12. 剥片1種C段階
13. 碎片B段階
14. 碎片B段階
15. 碎片B段階
16. 碎片C段階
17. 碎片C段階
18. 未製品B段階
(扁平片刀)
19. 未製品E段階
(扁平片刀)
20. 未製品D段階
(扁平片刀)
21. 扁平片刀石斧
22. 未製品E段階
(扁平片刀)
23. 未製品E段階
(扁平片刀)
24. 柱状片刀石斧
(1:2)

磨製石斧

S B1473

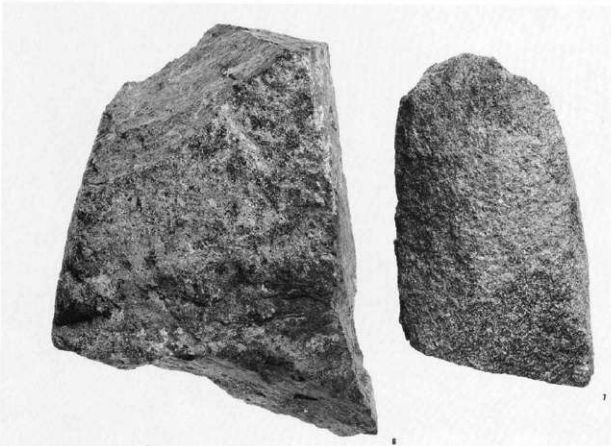
1. 未製品C₂段階
(太型蛤刃)
2. 未製品C₂段階
(太型蛤刃)
3. 剥片B類B段階
4. 剥片B類B段階
(2:3)



磨製石斧

S B1681

6. 素材剥片(礫)
 7. 未製品D段階
(太型蛤刃)
- (2:3)



磨製石斧

S B1473

5. 原石

(3 : 5)



磨製石斧

S B1474

1. 素材剥片(礫)

2. 素材剥片(礫)

3. 未製品C段階

(大型蛤刃)

(1:2)



磨製石斧

S B1474

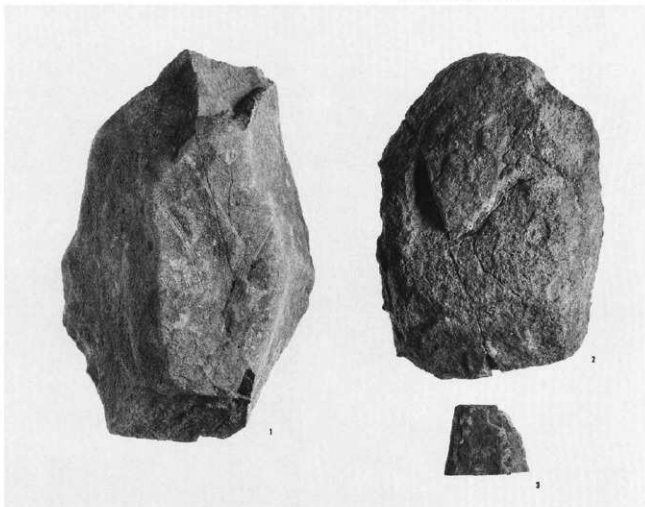
4. 未製品C₁段階
(太型蛤刀)
5. 未製品C₂段階
(太型蛤刀)
6. 石槌
7. 剥片B類A段階
8. 未製品E₂段階
(柱状片刀)
9. 扁平片刀石斧
(2:3)



磨製石斧

S B1478

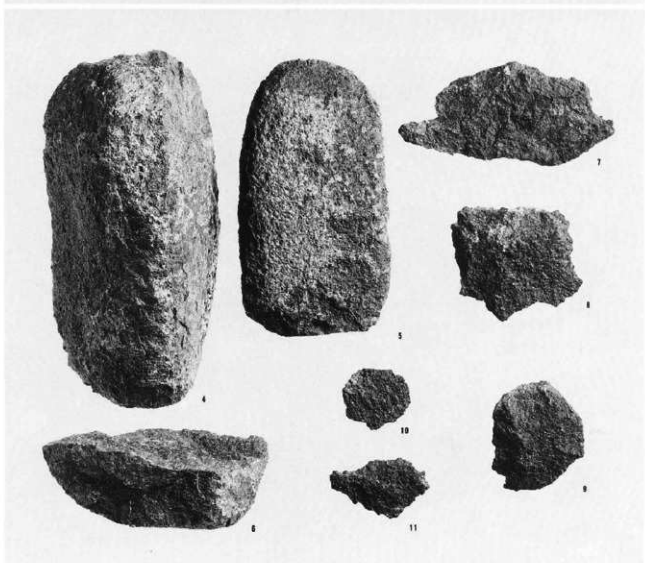
1. 原石
2. 未製品B段階
(扁平片刃)
3. 未製品B段階
(扁平片刃)
(2:3)



磨製石斧

S B1483

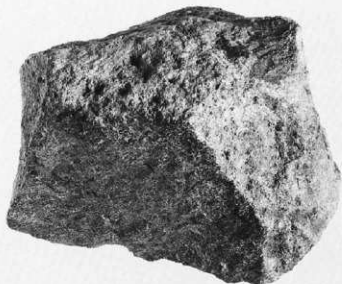
4. 未製品C₁段階
(大型蛤刃)
5. 未製品D段階
(大型蛤刃)
6. 未製品D段階
(扁平片刃)
7. 剥片B類C₁段階
8. 剥片B類C₂段階
9. 剥片B類B段階
10. 碎片B段階
11. 碎片B段階
(2:3)



磨製石斧

S B1482

1. 素材剥片(確)
2. 剥片1種A段階
3. 剥片B類B段階
4. 剥片B類C段階
5. 剥片B類B段階
6. 剥片2種C段階
7. 剥片B類C段階
8. 剥片1種C段階
9. 碎片C段階
10. 碎片C段階
(2:3)



1



2



3



4



5



6



7



8



9

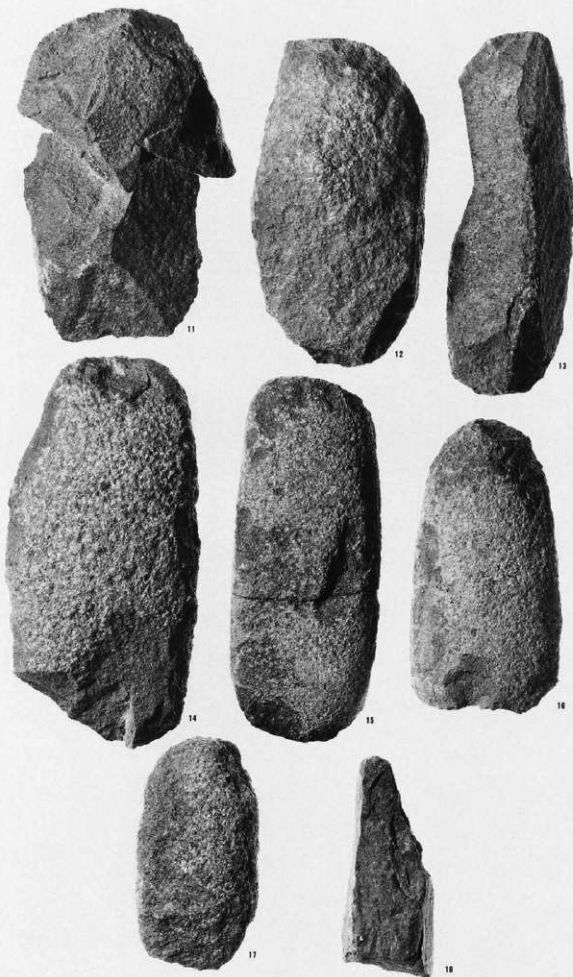


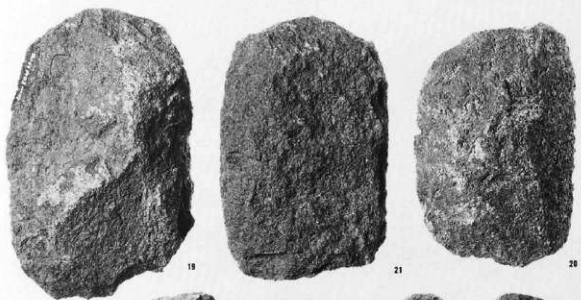
10

磨製石斧

S B1482

11. 未製品B段階
(大型給刃)
12. 未製品C₁段階
(大型給刃)
13. 未製品C₂段階
(大型給刃)
14. 未製品C₃段階
(大型給刃)
15. 未製品D段階
(大型給刃)
16. 未製品D段階
(大型給刃)
17. 未製品C₂段階
(大型給刃)
18. 石槌
(1:2)



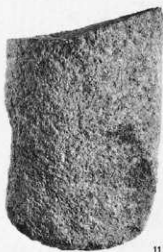


- 磨製石斧
S B1482
- 19. 未製品B段階
(扁平片刃)
 - 20. 未製品B段階
(扁平片刃)
 - 21. 未製品B段階
(扁平片刃)
 - 22. 未製品B段階
(扁平片刃)
 - 23. 原石
 - 24. 未製品B段階
(扁平片刃)
 - 25. 未製品E段階
(扁平片刃)
 - 26. 未製品B段階
(扁平片刃)
 - 27. 未製品E段階
(扁平片刃)
 - 28. 未製品E段階
(扁平片刃)
 - 29. 未製品E段階
(扁平片刃)
(2 : 3)
-
- 30. 未製品
(磨製石戈・有孔石劍)
(2 : 3)

磨製石斧

S B1484

1. 素材剥片(礫)
2. 素材剥片(礫)
3. 未製品B段階
(大型給刀)
4. 未製品C₂段階
(大型給刀)
(1:3)
5. 剥片B類B段階
6. 未製品E段階
(扁平片刃)
7. 剥片1種B段階
8. 碎片B段階
9. 碎片E段階
10. 未製品D段階
(大型給刀)
11. 未製品D段階
(大型給刀)
12. 未製品D段階
(大型給刀)
13. 扁平片刃石斧
(1:2)





磨製石斧

S K14770

1. 未製品B段階
(大型蛤刃)
2. 未製品C段階
(大型蛤刃)
(2:3)



磨製石斧

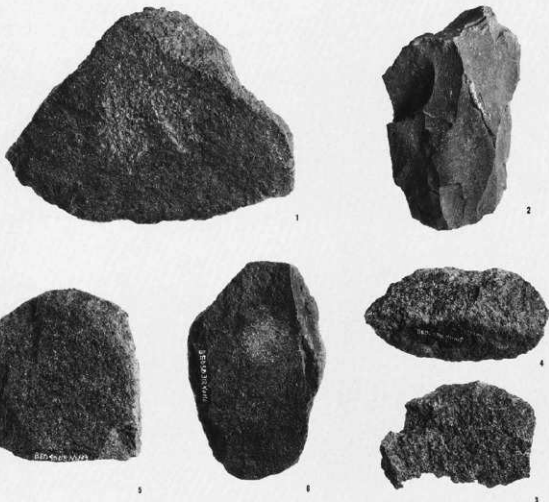
S K14726

3. 未製品C段階
(大型蛤刃)
(2:3)

磨製石斧

SD318

1. 剥片2種A段階
2. 石核?
3. 剥片B類C,段階
4. 剥片B類C,段階
5. 未製品D段階
(扁平片刃)
6. 未製品E,段階
(扁平片刃)
(2:3)



磨製石斧

SK3277

7. 未製品B段階
(扁平片刃)
8. 未製品E,段階
(大型蛤刃)
9. 扁平片刃石斧
(2:3)



磨製石斧

S B313

1. 大型蛤刃石斧

S K9244

2. 石槌

S B1185

3. 大型蛤刃石斧

(1:1)



1



2



3

磨製石斧

SG1

1. 扁平片刃石斧

SG3

2. 未製品D段階
(太型蛤刃)

3. 未製品D段階
(扁平片刃)

4. 未製品B段階
(扁平片刃)

SG4

5. 太型蛤刃石斧

(1:1)





1



5



2



6



3



4



9



8



7

磨製石斧

IVS 4

1. 未製品C段階
(大型蛤刃)
2. 未製品D段階
(大型蛤刃)

VII B12

3. 大型蛤刃石斧

Z

4. 両刃石斧
S B 442-7 と接合
P L 160
5. 石槌

IVR15

6. 石槌

IVS 3

7. 未製品E段階
(扁平片刃)

Z

8. 扁平片刃石斧

IVN19

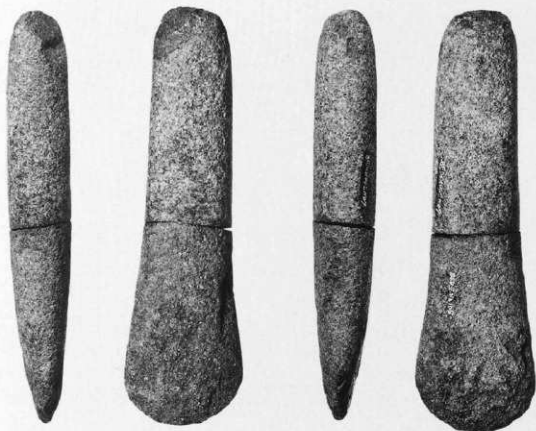
9. 未製品E段階
(柱状片刃石斧)

(1 : 2)

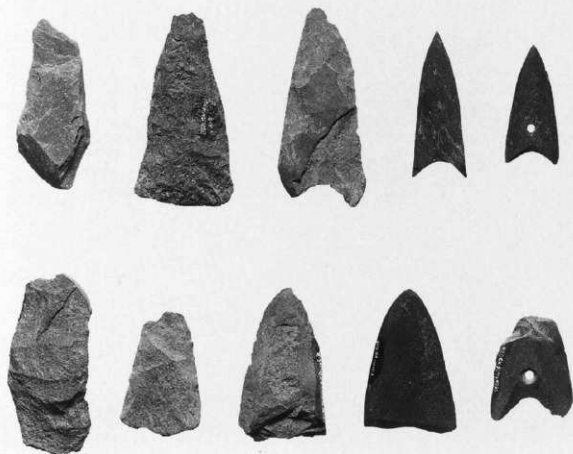
磨製石器
製作関連資料
集合写真



両刃石斧
S B442-7 と
Z-105接合
(1:3)



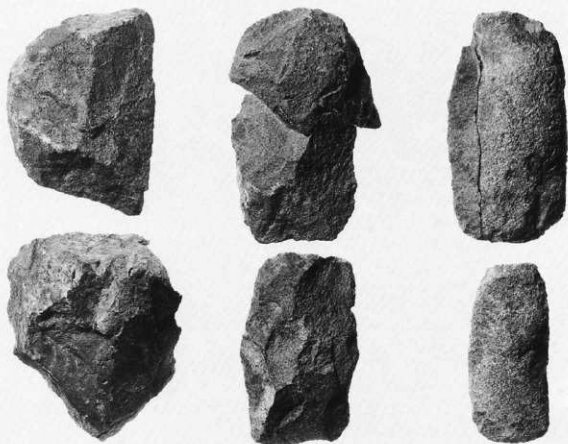
磨製石鏃
製作関連資料
集合写真
(1:1)



大型蛤刃石斧

製作関連資料
集合写真

(1:3)



扁平片刃石斧

製作関連資料
集合写真

(1:3)

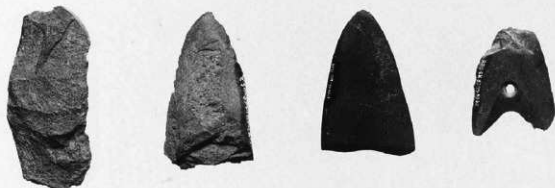




太型船刃石斧の
製作工程
(右端製品は松原
遺跡出土例)
(1:3)



扁平片刃石斧の
製作工程
(右端製品は松原
遺跡出土例)
(1:3)



磨製石鏃の製作工程
(1:1)

使用痕写真

太型蛤刃石斧

1. SG 4

図版299-5

PL157-5

(1a, 刃部摩耗線状痕)

2. 接合資料

第76図

PL160の上

S B442 (上)

図版276-4

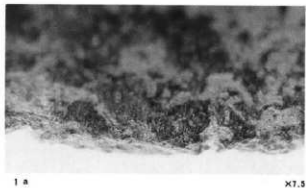
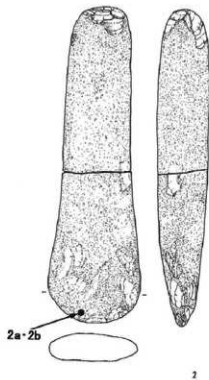
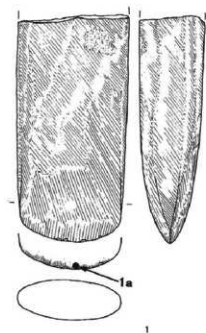
PL141-4

Z (下)

図版300-4

PL158-4

(2a-b, 刃部摩耗線状痕)



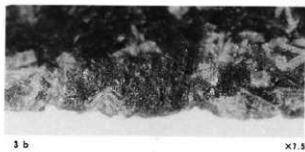
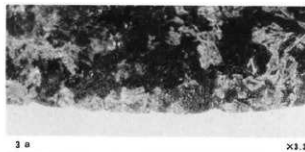
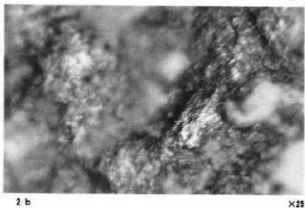
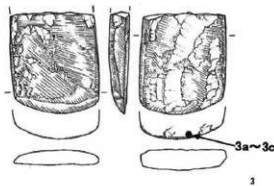
扁平片刃石斧

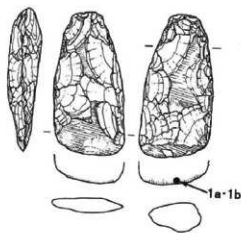
3. SG 1

図版299-1

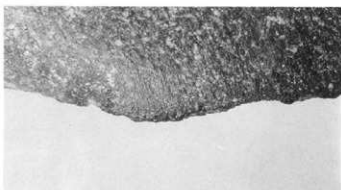
PL157-1

(3a-c, 刃部摩耗線状痕)



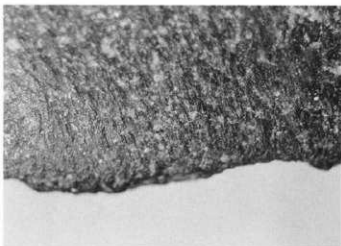


1



1 a

×3.3



1 b

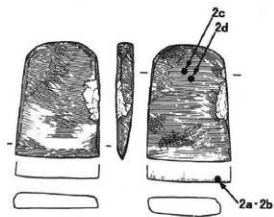
×7.5

使用復写真

扁平片刃石斧
未製品

1, S B1482
図版291-28
P L152-28

(1a·b, 刃部
摩耗線状痕)

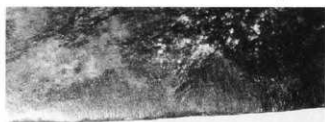


2



2 c

×25



2 a

×3.3



2 b

×7.5



2 d

×25

扁平片刃石斧

2, S B1474
図版287-9
P L148-9

(2a·b, 刃部
摩耗線状痕)
(2c, 基部研磨痕)
(2d, 基部摩耗痕)

使用痕写真

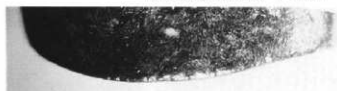
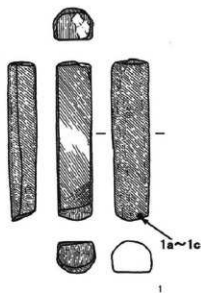
柱状片刃石斧

1. S B1469

図版282-24

PL144-24

(1a~c, 刃部摩耗線状痕)



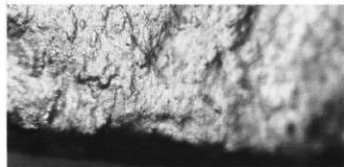
1 a

x3.1



1 b

x12.1



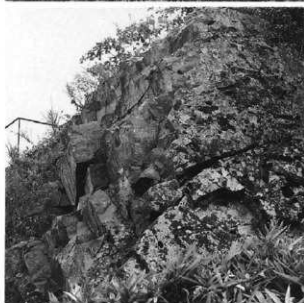
1 c

x23

露頭写真

保科玄武岩類

(遺跡より北へ1 km)



くぼみ石・石鉢・石臼

1. SG 3

2. SB663

3. SB680

4. IVR25

5. SG 1

6. SB314

7. SG 4

8. SB688

9. SB688

10. SD 1

11. SK439

12. ST 2

13. SD 1

14. SD 1

15. SD 1

(1 : 6)



1



2



3



4



5



6



7



8



9



10



11



12



13



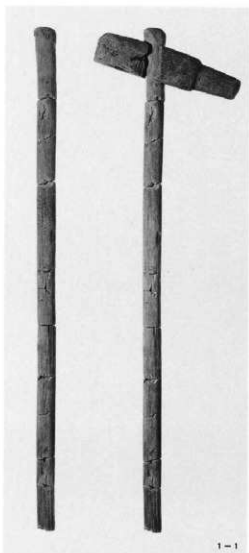
14



15

1-2-5 斧柄

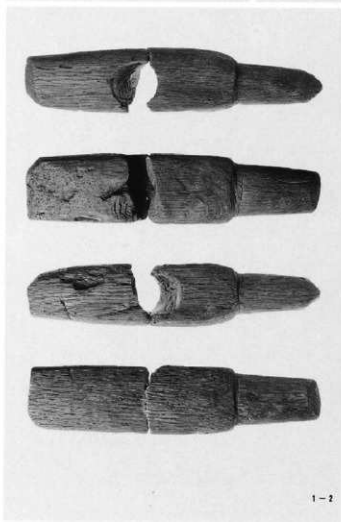
1-2-2-2 斧白



1-1



2-1



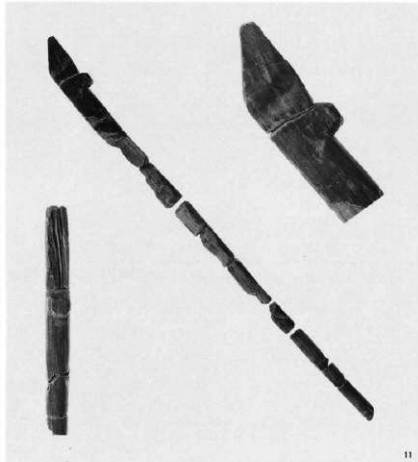
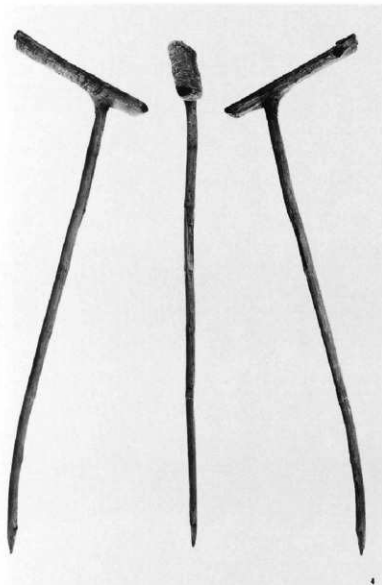
1-2



2-2



5



3・4・6・8 斧柄

9・10・11 鎌曲柄

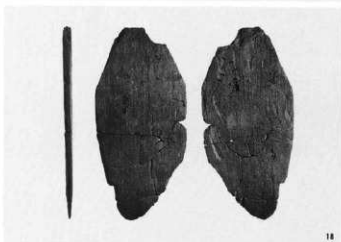
12・13・14・曲柄平鉄
16・18・19



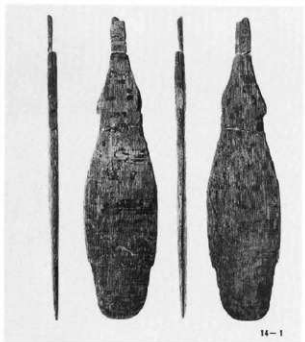
12-1



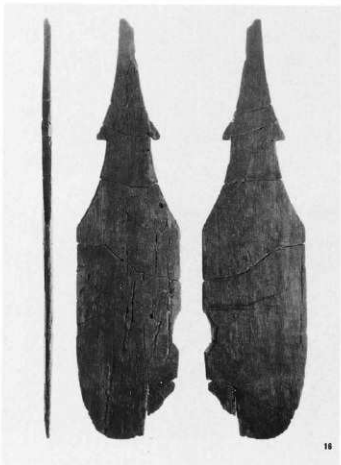
13-1



14



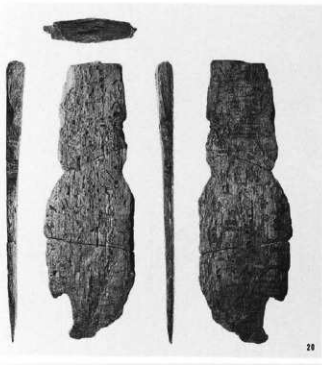
16-1



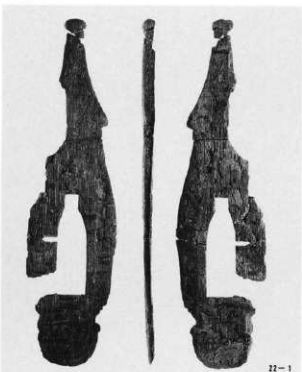
18



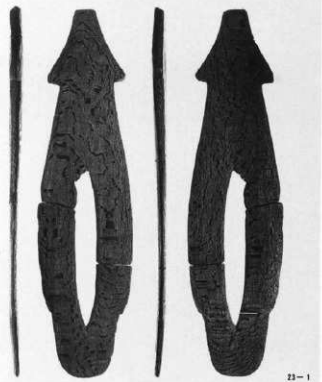
19



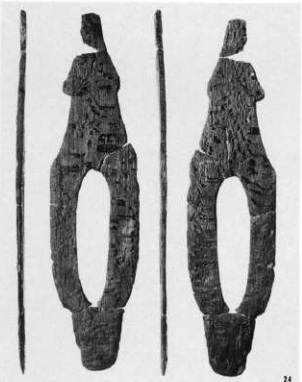
20



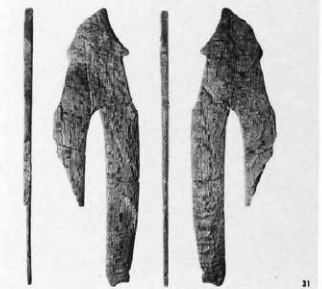
22-1



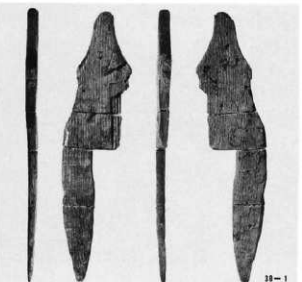
23-1



24



31



30-1

20・22・ 曲柄平楯

23・24

30・31 曲柄又楯

13-2・曲柄平鉄軸部

22-2

22-3・同スリット部

23-2

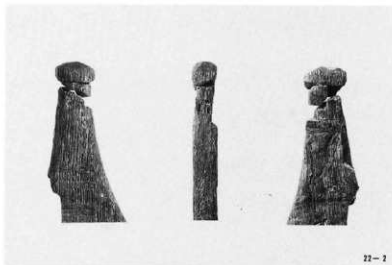
12-2・同刃部先端

14-2・

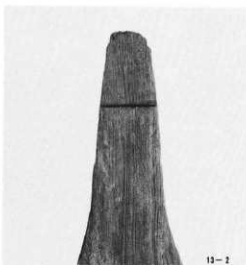
23-3

30 曲柄又鍔

刃部先端



22-2



13-2



21-2



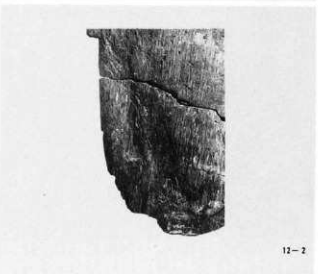
22-3



14-2



23-3



12-2



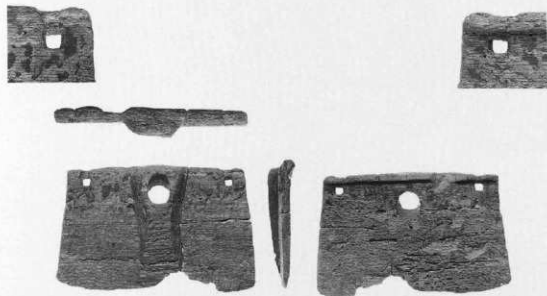
30-2



10-3



32



33

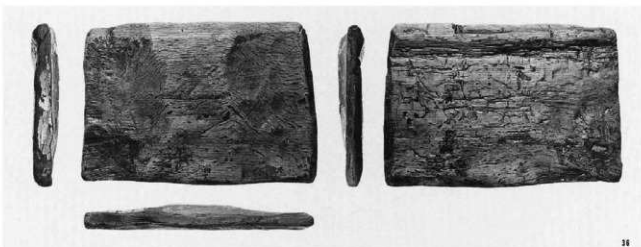


34



35

- 36 直柄横楯
 37 泥除け
 37-2 柎孔
 38 土太刀



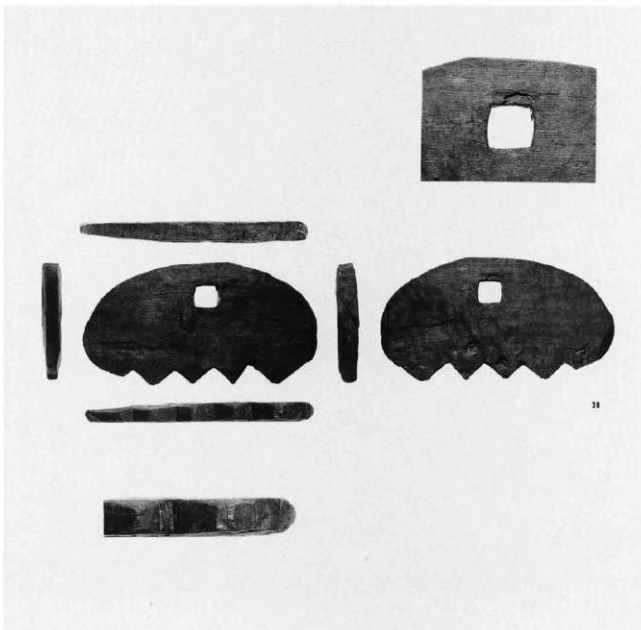
36



37-1



37-2



38



43-1



43-2

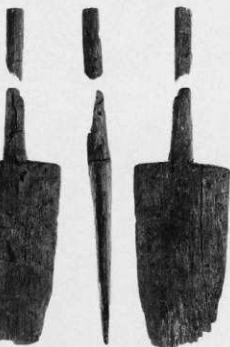


41-1

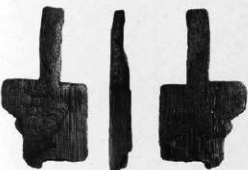


42

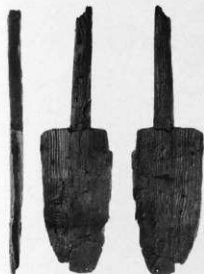
- 42・43 一木鋤
- 43-1 把手(表)
- 43-2 把手(裏)
- 44・45・46 一木鍬
- 47-1 組合わせ式
多叉鋤



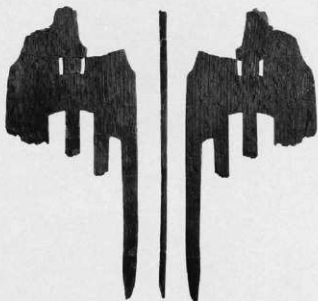
44-1



44



45-1



47-1

45-2・一木鐮刀部先端

46-2

47-2 組合わせ多叉鐮
柄孔拡大

49-52 大足

49-2 同横杵先端

52-2 同側面

80・81・木軸

83・85

80-2 括弧部

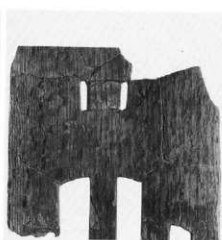
83-2 上端



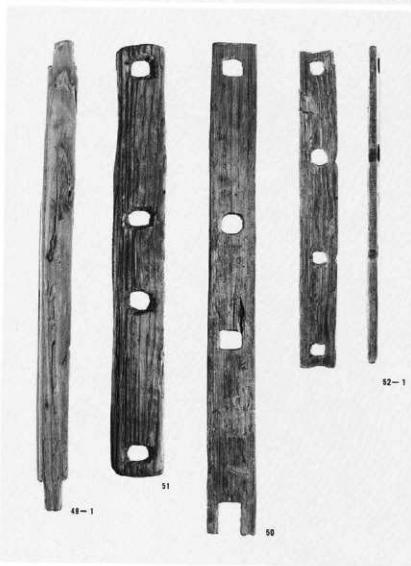
45-2



46-2



47-2



48-1

51

50

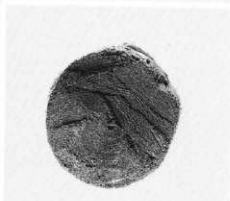
52-1



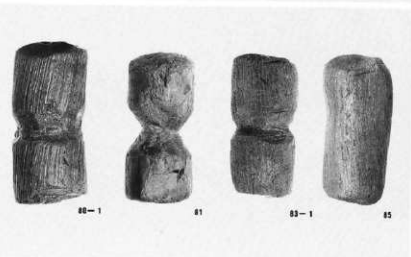
49-2



52-2



80-2

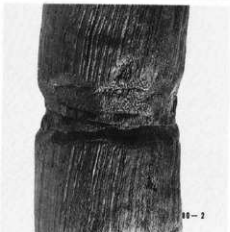


80-1

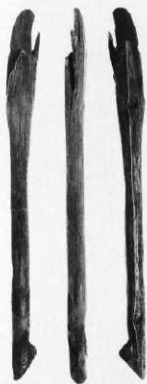
81

83-1

85



80-2



38-1



39-2



41



48

- 39-40 鎌柄
- 39-2 装着孔
- 41 鎌柄基部
- 48 穂打ち棒
- 57-2・堅竹搦部先端
- 59-2・
- 62-2
- 61-2 堅竹搦部



48



61-2



57-2



62-2



59-2

54~62 整件



54



55



57-1



56



58



62-1



60



61-1



59-1



63



64



65



66

67-72・横組

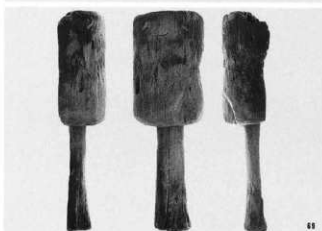
78・79



67



68



69



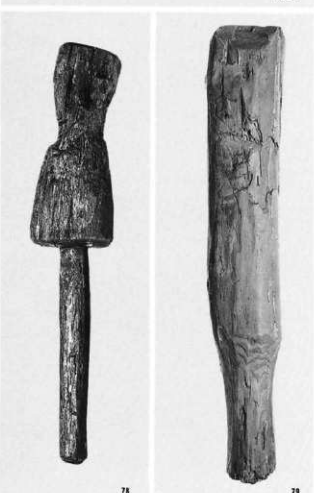
70-1



71-1



72-1



78

79

- 73-77 横楯
- 70-2・同敲打痕
- 71-2・
- 72-2
- 74-2 同上部
- 88 紡錘車
- 87 杆
- 87-3 同斷齒状文



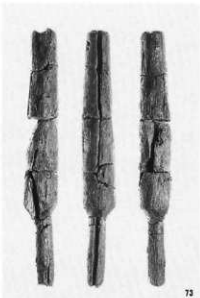
75



74-1



77



73



76



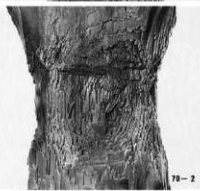
71-2



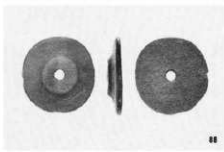
74-2



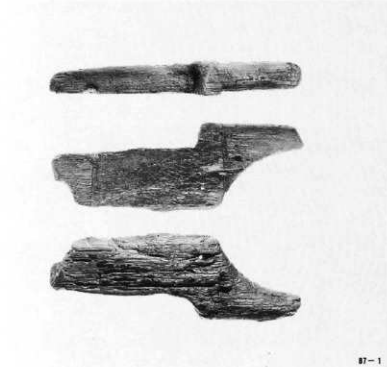
72-2



70-2



88



87-1

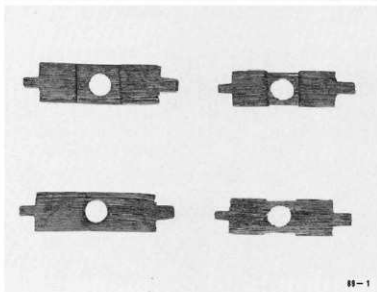
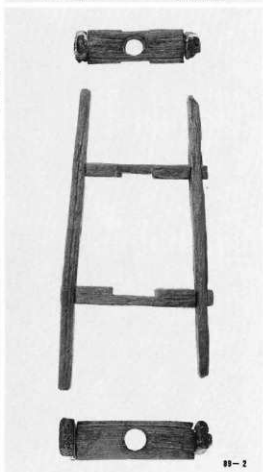
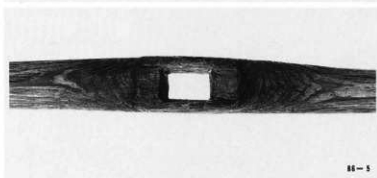
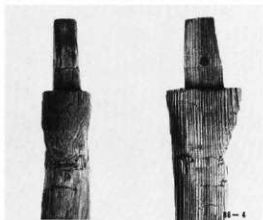
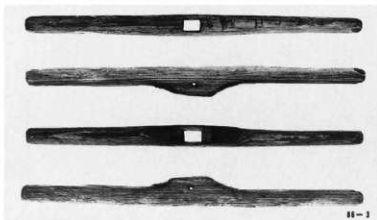


87-2



87-3

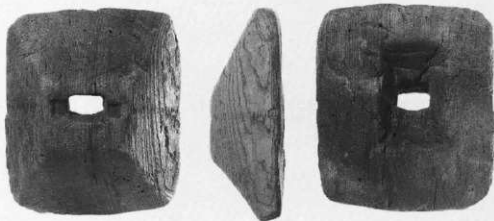
- 86 杵
 86-2 支え木
 86-3 腕木
 86-4 支え木出柄
 86-5 腕木柄孔
 89 糸巻





80-1

90・91・92 楠
90-2・同 軸孔
91-2・
92-2



81-1



82-1



90-2



91-2

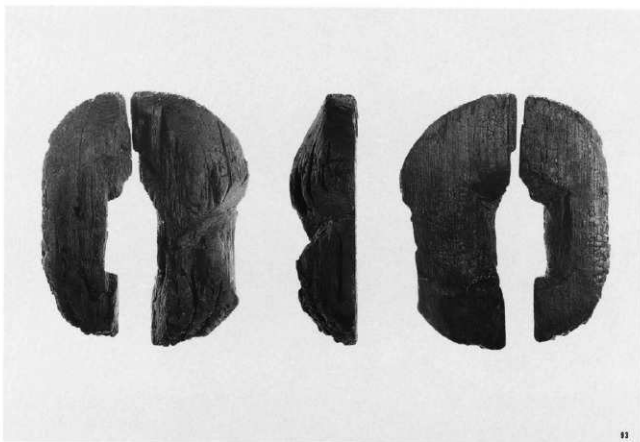


92-2

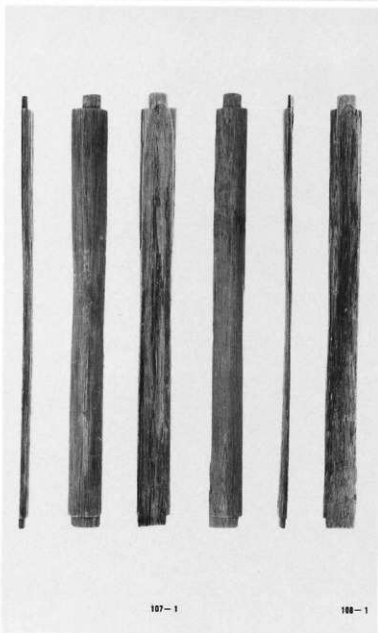
93 桶

107-108 剣鞘

107-2・108-2 鞘尻

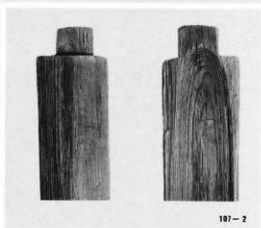


93

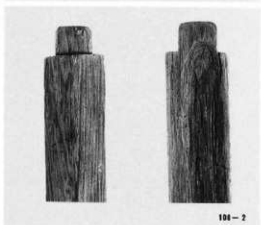


107-1

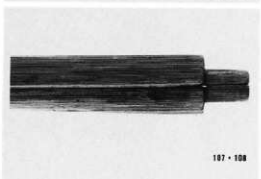
108-1



107-2



108-2



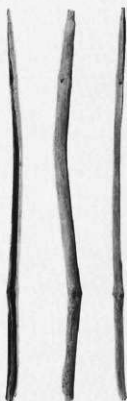
107-108



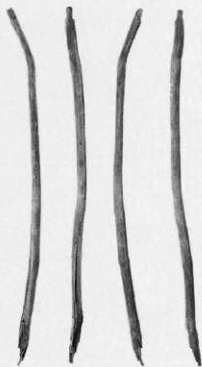
110 壺紐
95~98 白木弓



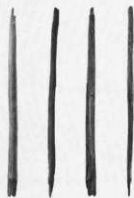
110



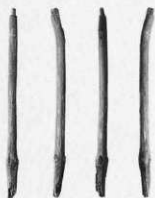
95



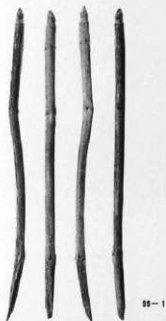
96



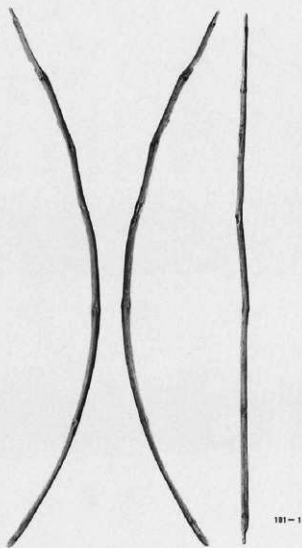
97



98



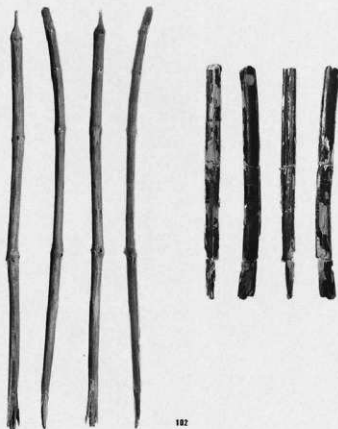
99-1



101-1



99-2



102

103



101-2

99・101・白木弓

102

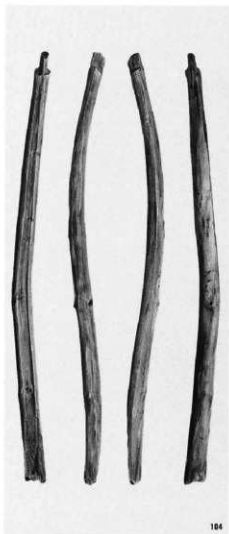
99-2・末頭

101-2

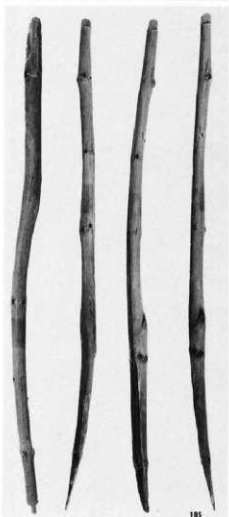
103 飾り弓

104・105 白木弓

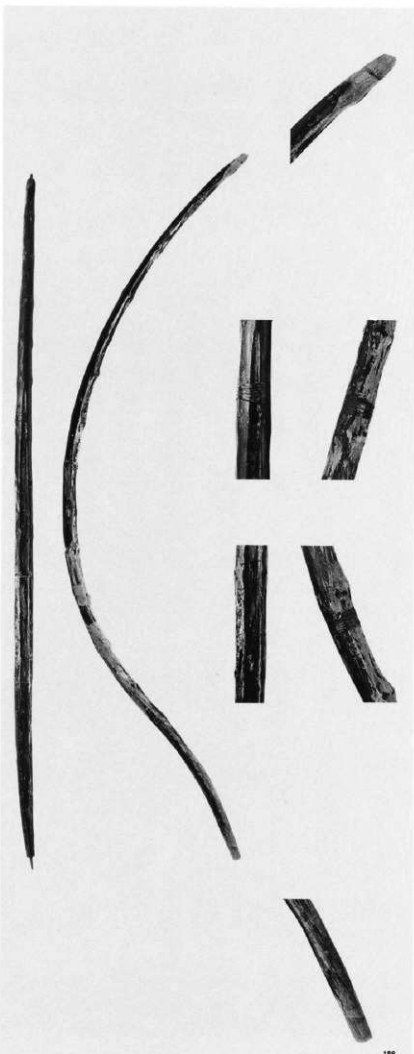
106 飾り弓



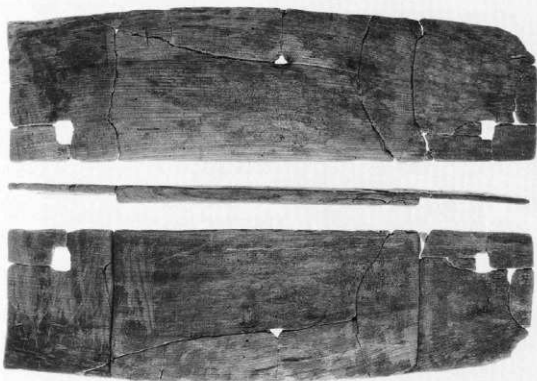
104



105



106



111-1

111 案もしくは机状
木製品

111-2 同 納孔

112-113 案もしくは机状

114 木製品脚部



111-2

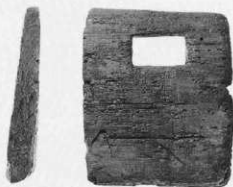


112-1

112-2



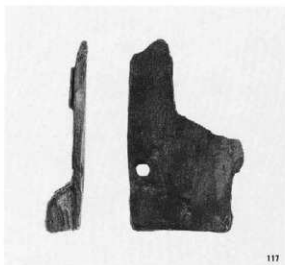
113



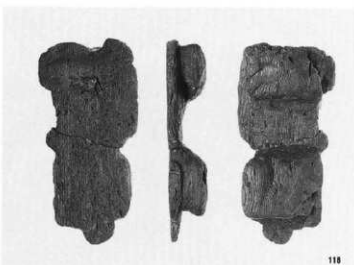
114

117~120 下駄

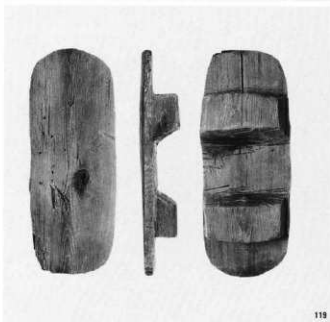
123 木履



117



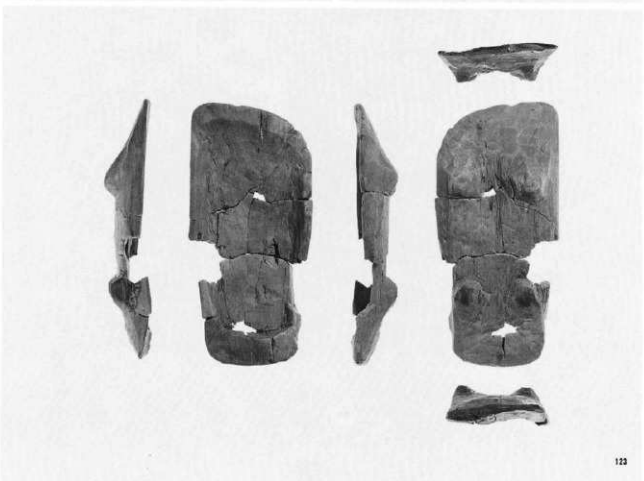
118



119



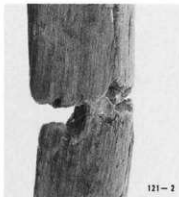
120



123



121-1



121-2



121-3

- 121・122 木眼
- 121-2 同 側面
- 121-3 同 裏面
- 128 横櫛
- 126・127 きぬがさ状
木製品



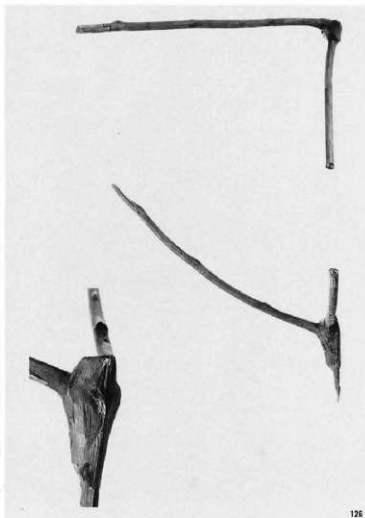
122



128



127



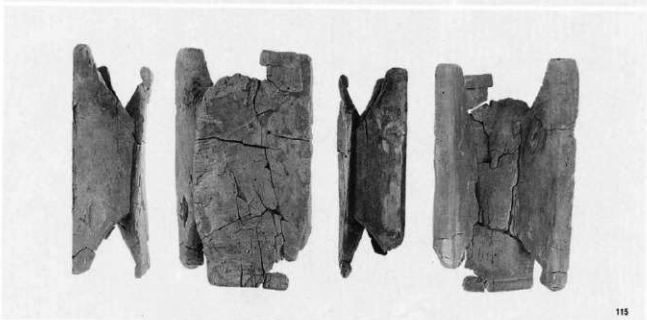
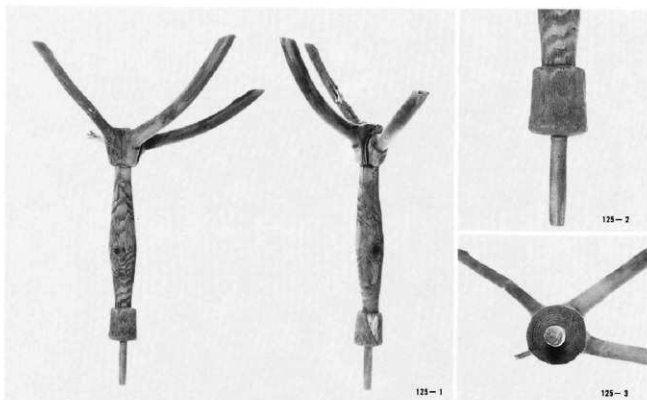
126

125 きぬがさ状木製品

125-2 同 軸

125-3 同 軸下面

115・116 腰拵け





129



134



130



132



131



133