



22



23



24



25



27



28

SB625



2



3



4



5



13



14



15



10



11



18



19



24



20



23



1



2



3



4



5



6



7



8



9



10



11



12



13



14



15



16



17

SB1219-②



17



21



26



18



27



22



23



10



7



20



8



40



41



44



29



30



31



32



33



34



35



38



36



37



38

SG 3

IV層-①



5



6



17



22



25



26



27



33



34



28



30



36



38



32



34



37



72



78



106



113



108



87



88



89



90



91



92



126



127



137



175



138



168



180



155



165



177



183



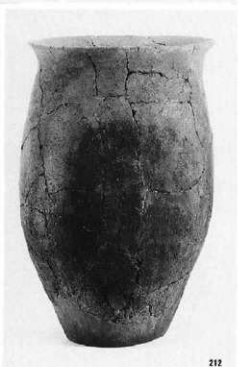
167



158

SG 3

IV層-③





217



218



219



221



225



226



246



247

SG 3

IV層-⑤



241



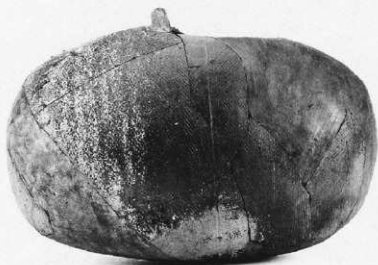
243



249



251



256



266



272



277



278



281



284



288



304



306



271



282



287



282



285



288



313



312



311



318



220



316

SG 3

VI層-②



SG 3

VIW-③



432



433



436



445



447



448



453

SG 3

VI層-④

(455・459・

461・462・

463)



455



459



461



462

SG 3 VII層

(476)



463



476



508



509



515



518

SG 3 Ⅷ層
(503・504・
506・508・
509・513・
515・516・
548・549)



506



513



504



503



548



549



575

SG 3
層位不明
(575・580・
582・586)



580



582



586

SG 3

②-3 A地区



48



49



50



51



52



53



57



54



55



88



SB1627
古墳Ⅰ期



SB322
古墳Ⅱ期



SB380
古墳Ⅱ期

SB625
古墳Ⅲ期



SB69
古墳Ⅳ期



SB1219
古墳Ⅴ期





SG 3 IV層

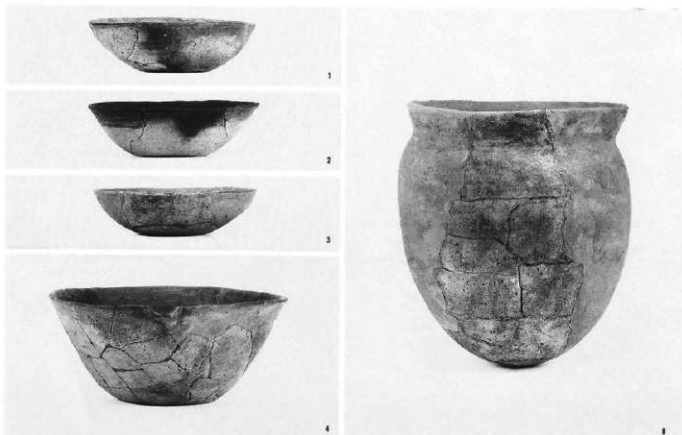


SG 3 VI層

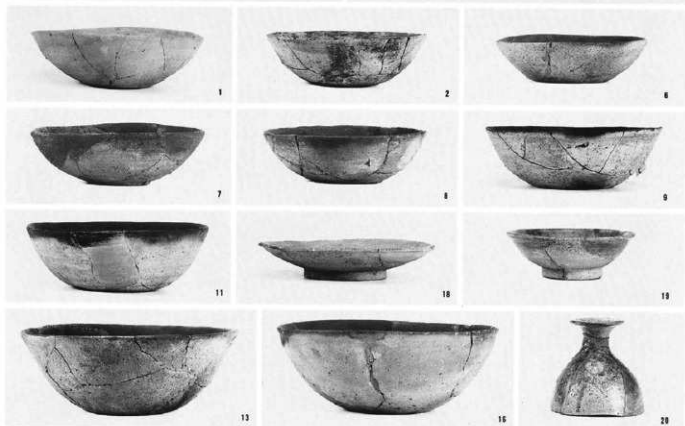


SG 3 VIII層

SB8
(1-4・8)

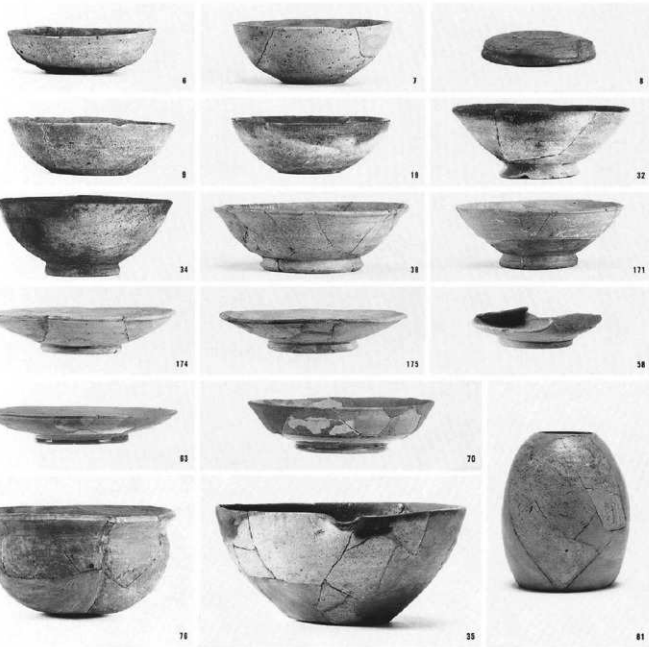


SB503
(1・2・6・9・
11・13・16・
18-22)



SB512
(3)

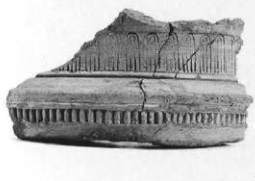




奈良時代～
平安時代土器
SD47
(6・9・19・
32・34・35・38・
58・63・70・76
81・171・174・
175)



中世土器
1. SD13-1
2. SK316-1
3. SK778-1
4. III区表採-2
5. VI区表採-1
6. III L 7-1
7. SD1-18



SB503



SD47



石核

1. Z
 2. VIS 18
 3. SB445
 4. SB459
 5. SB1483
 6. SB457
 13. SB1474
- (2 : 3)



剥片A類

7. IVN19
 8. SB1469
 9. IVN19
 10. SB459
 11. IVS17
 12. SB1468
 14. IVS 8
- (2 : 3)

磨製石鏃

1. SB1469
2. SB1469
3. SB1484
4. IVS 11
5. SK14706
6. SB1469
7. IVS 11
8. IVS 3・4
9. SB1473
10. SB1469
11. SB1469
12. IVR 10
13. SB157
14. SB1469
15. SB445
16. SK3277
17. SB459
22. SD47

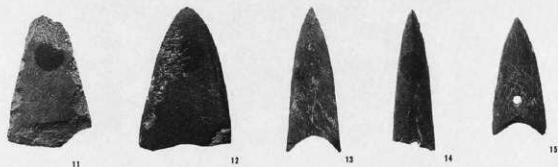
(1 : 1)



打製石鏃

18. SD79
19. SD47
20. SB1469
21. SB98

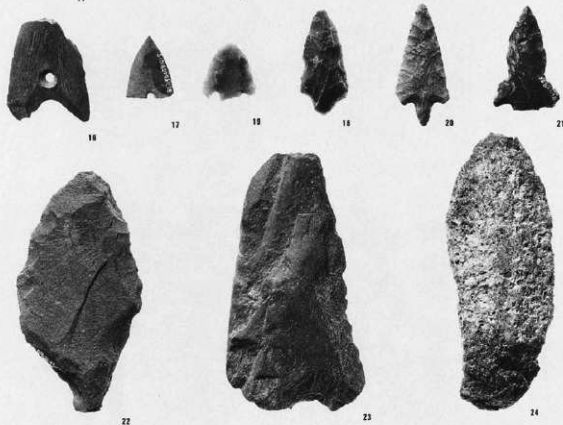
(1 : 1)



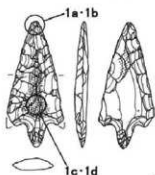
磨製石剣

23. SB361
24. SB1482

(1 : 1)



PL104 弥生時代石器(3)



使用痕写真

打製石鏃

1. S B1469

図版259-20

P L103-20

(1a-b, 先端部磨耗状)

(1c-d, 基部磨耗状)

1

x12.5

1 b

x25

LIVETIME (spec.) = 99

Peak at 2.30 keV omitted ?

Peak at 2.62 keV omitted ?

ENERGY	RES	AREA
-3.7	61.11	35293
TOTAL AREA = 41268		

ENERGY	RES	AREA
-3.8	61.21	35250
TOTAL AREA = 39521		

	%OXIDE	FORMULA
SiO2	70.250	9.175
TiO2	1.573	.154
Al2O3	15.718	2.420
•FeO	.440	.048
•MnO	.044	.005
MgO	3.623	.705
CaO	1.911	.267
Na2O	3.417	.865
K2O	3.023	.504
		24.000
	99.999	14.145

	%OXIDE	FORMULA
SiO2	68.233	8.967
TiO2	1.854	.183
Al2O3	16.670	2.582
•FeO	.782	.086
•MnO	-.063	-.007
MgO	3.968	.777
CaO	1.589	.224
Na2O	3.849	.981
K2O	3.053	.512
		24.000
	99.936	14.305

先端部1

先端部2

ENERGY	RES	AREA
-3.8	61.34	35318
TOTAL AREA = 33541		

ENERGY	RES	AREA
-4.0	61.19	35314
TOTAL AREA = 33710		

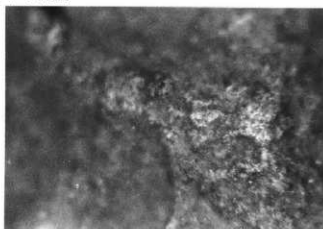
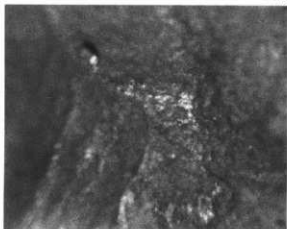
	%OXIDE	FORMULA
SiO2	61.542	8.291
TiO2	4.623	.468
Al2O3	17.602	2.725
•FeO	.990	.112
•MnO	-.070	-.008
MgO	2.864	.570
CaO	7.644	1.183
Na2O	2.260	.570
K2O	2.471	.425
		24.000
	99.926	14.351

	%OXIDE	FORMULA
SiO2	63.004	8.365
TiO2	3.309	.330
Al2O3	19.526	3.056
FeO	1.457	.162
•MnO	-.062	-.007
MgO	3.918	.775
CaO	5.020	.715
•Na2O	1.416	.365
K2O	2.738	.396
		24.000
	99.935	14.157

基部1

基部2

EDX分析チャート(半定量)



1 c

x25

1 d

x30

使用痕写真

磨製石鏃

头成品 2 A類

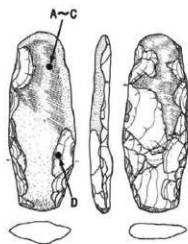
IVS 3・4

図版258-8

P.L.103-8

(A~C, 基部先端研學板)

(D, 基部剝離板)



試料No 1

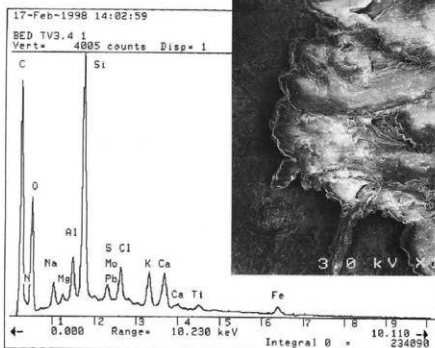


A

X200

B

X100

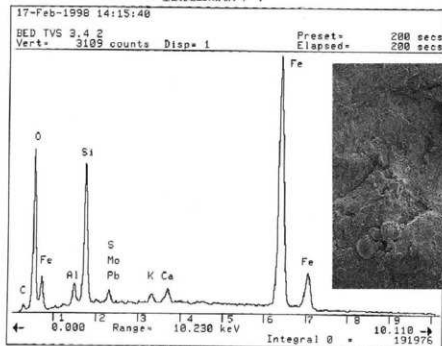


基部先端EDX分析チャート

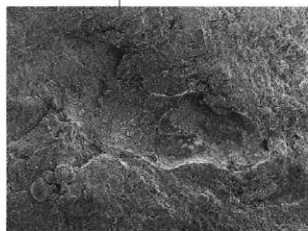


C

X1000

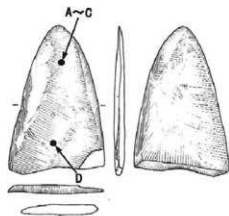


基部EDX分析チャート

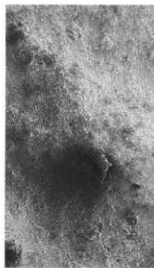


D

X200



試料No 2



A X200



B X300

使用痕写真

磨製石鏃

尖微品 2 B類

IVR10

図版258-12

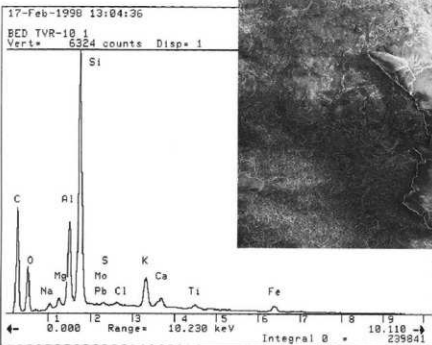
PL103-12

(A~C, 先端部研摩痕)

(D, 基部研摩痕)



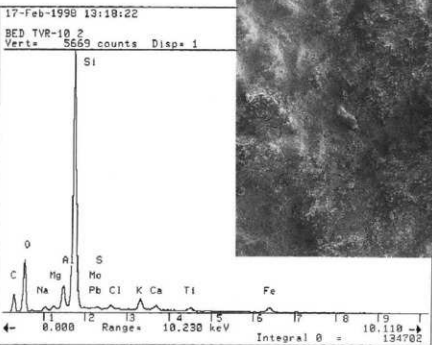
C X1000



先端部EDX分析チャート



D X1000



基部EDX分析チャート

使用痕写真

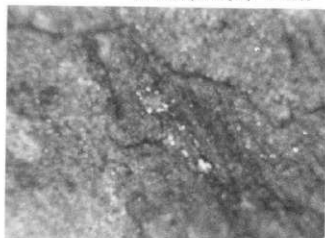
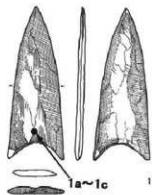
磨製石鏃

1. SB157

図版259-13

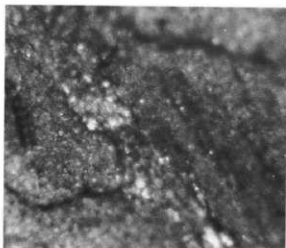
PL103-13

(1a~c, 基部摩耗痕)



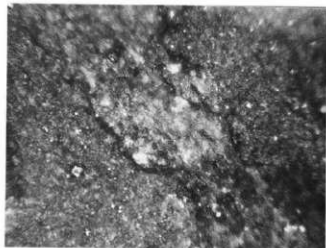
1 a

×25



1 b

×10



1 c

×125

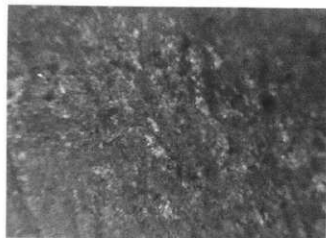
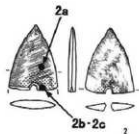
2. SB459

図版259-17

PL103-17

(2a, 基部摩耗痕)

(2b·c, 穴部周辺の
白色付着物)



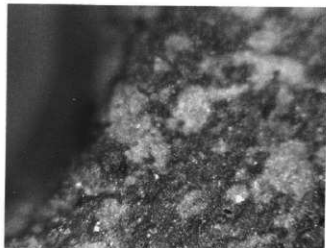
2 a

×25



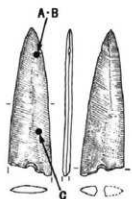
2 b

×25

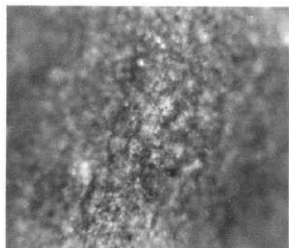


2 c

×125



図柄No 3



A

x25

使用痕写真

磨製石鏃

S B1469

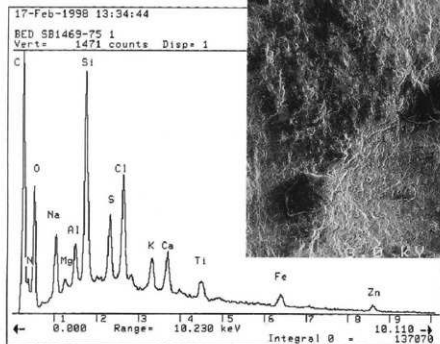
図版259-14

PL103-14

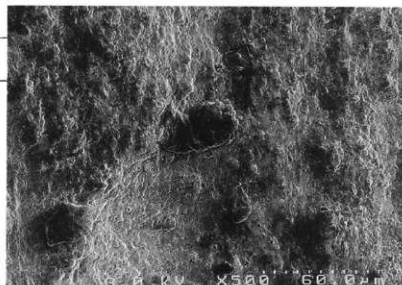
(A・B,先端部

研磨痕)

(C,基部研磨痕)

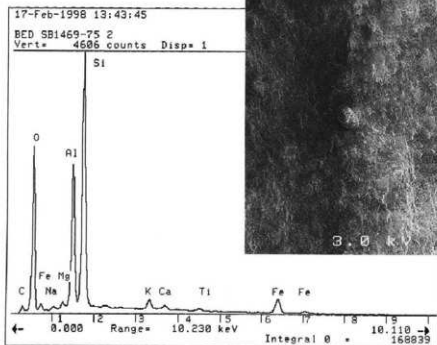


先端部EDX分析チャート



B

x500



基部EDX分析チャート



C

x500

使用写真

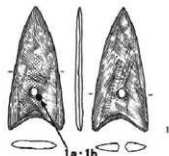
磨製石鏃

1. S B445

図版259-15

PL103-15

(1a・b, 穴部周辺の磨耗痕)



LIVETIME (spec.) = 51

15.00 kV
TILT = .00
ELEV = 45.00
AZIM = .00
COSINE = .965

ENERGY	RES	AREA
-3.7	62.21	10207
TOTAL AREA = 94541		
Peak at	.39 keV omitted ?	
Peak at	.41 keV omitted ?	

ENERGY	RES	AREA
-3.8	61.43	18117
TOTAL AREA = 86103		
Peak at	2.30 keV omitted ?	
Peak at	2.63 keV omitted ?	

	%OXIDE	FORMULA
SiO2	68.682	9.159
TiO2	1.865	.187
Al2O3	14.756	2.319
FeO	5.806	.648
MnO	.628	.071
MgO	2.607	.518
CaO	.279	.040
Na2O	2.164	.560
K2O	3.212	.546
		24.000
	100.000	14.048

	%OXIDE	FORMULA
SiO2	67.608	9.027
TiO2	1.306	.131
Al2O3	15.948	2.510
FeO	5.896	.658
•MnO	.141	.016
MgO	3.125	.622
CaO	.500	.071
Na2O	1.910	.494
K2O	3.566	.607
		24.000
	100.000	14.138

先端部

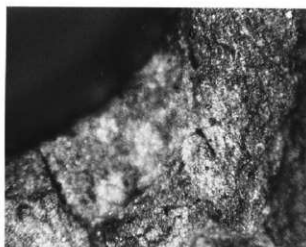
基部

EDX分析チャート(半定量)



1 a

x25



1 b

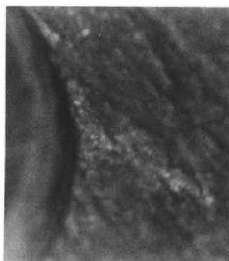
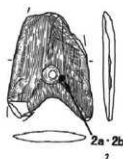
x25

2. S K3277

図版259-16

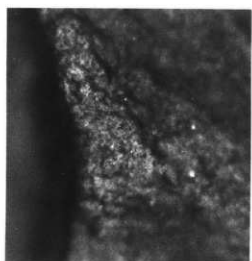
PL103-16

(2a・b, 穴部周辺の磨耗痕)



2 a

x25

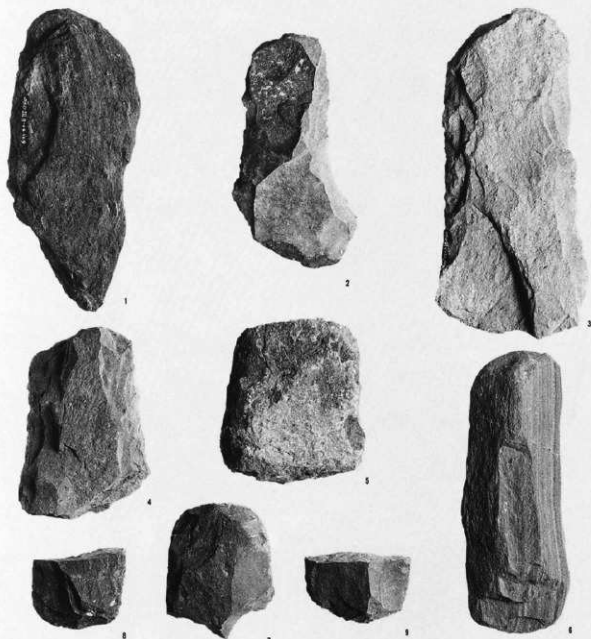


2 b

x25

打製石斧

1. III B 4
 2. IV N 19
 3. VI V 22
 4. SD 57
 5. SB 442
 6. ㊸-3-C
 7. SB 1482
 8. SB 1482
 9. IV S 11
- (1 : 2)



小形刃器

1. SD 47
 2. SD 79
 3. SB 459
 4. SD 79
- (1 : 1)



使用復写真

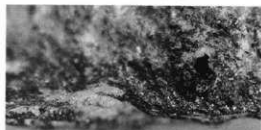
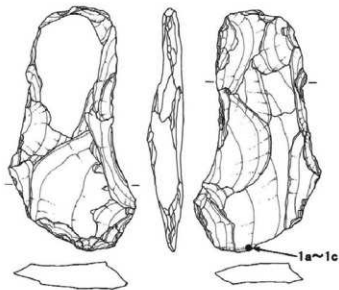
打製石斧

1. IVN19

図版260-2

PL110-2

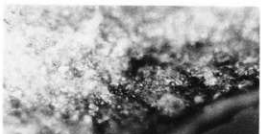
(1a~c, 刃部摩耗痕)



1 a x10



1 b x12.5



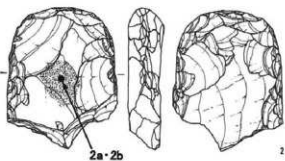
1 c x25

2. SB1482

図版261-7

PL110-7

(2a·b, 基部摩耗痕)



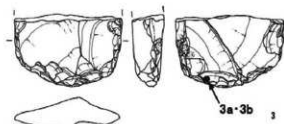
2a·2b

3. IVS11

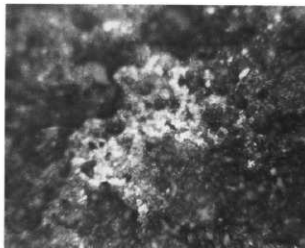
図版261-9

PL110-9

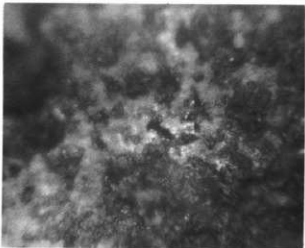
(3a·b, 刃部摩耗痕)



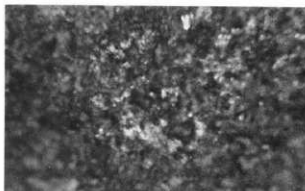
3a·3b



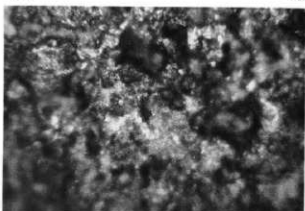
2 a x25



2 b x50



3 a x25

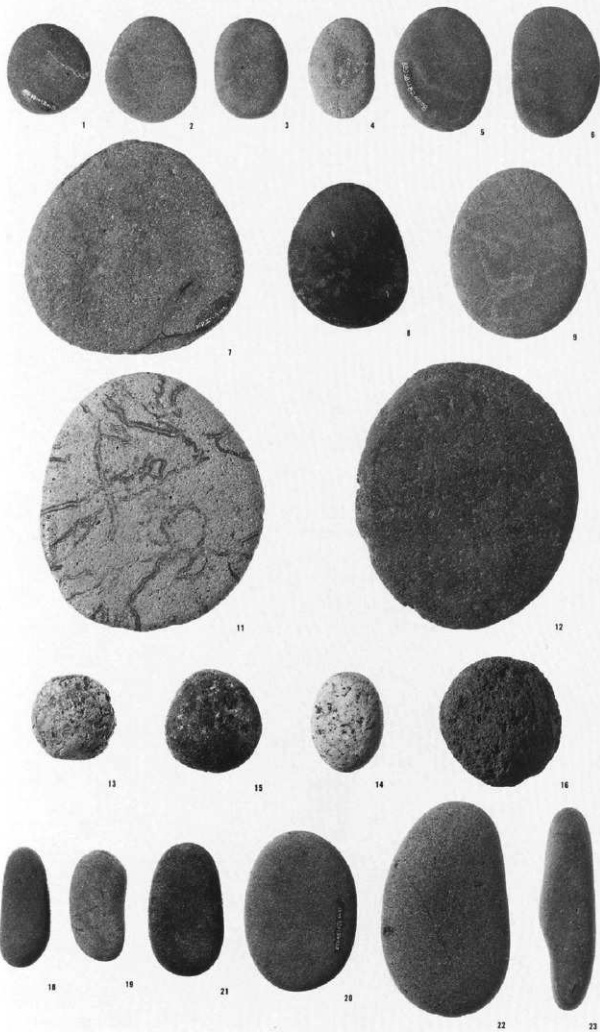


3 b x50

磨石

1. SB1478
2. IVN24
3. SB1473
4. IVN24
5. SB1482
6. SB1474
7. II Y 13
8. SB1474
9. SB1473
11. II Y 13
12. SB736
13. SB1469
14. IVN24
15. SB1469
16. IVS 16
18. SB1469
19. SB1482
20. SB1473
21. SB1474
22. SB1651
23. SB1651

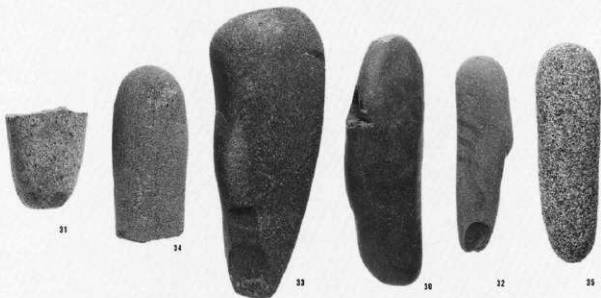
(1 : 2)



凹石 敲石

- 24. SB440
- 25. SB1484
- 26. SB1484
- 27. SB380
- 28. VIO18
- 29. SK14711
- 30. SB1440
- 31. SB1450
- 32. SB380
- 33. SB1679
- 34. SB838
- 35. SB354
- 36. SB1474
- 37. SB1482
- 38. SB1484
- 39. SB1474
- 40. SB1482
- 41. IVS11
- 42. SB1482
- 43. SB1474
- 44. SB1484
- 45. SB1469
- 46. SK14706

(1 : 3)





みかき石

- 1. SB1482
- 2. IVS11
- 3. SB1471
- 4. Z
- 5. SB1482
- 6. SG 3
(2 : 3)

円盤状石製品

- 7. SG 3
- 8. SB1661
(2 : 3)

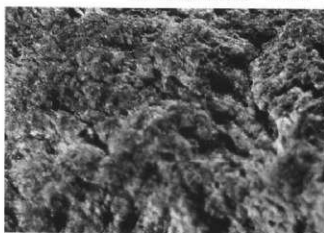
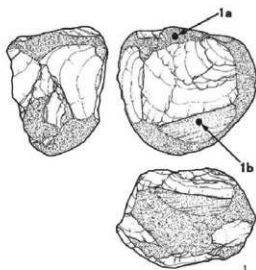
石錘

- 9. SB1482
- 10. SB1471
(2 : 3)

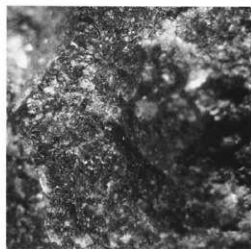
使用痕写真

敲石

1. S B1474
 図版264-43
 P L113-43
 (1a·b, 敲打痕)



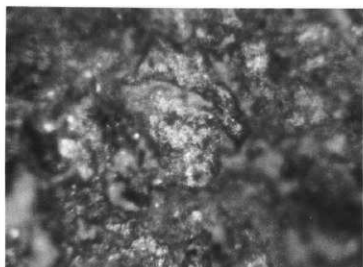
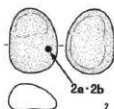
1 a x1.3



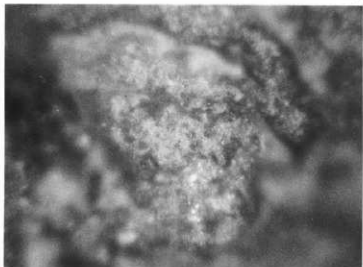
1 b x1.3

みがき石

2. S B1471
 図版265-3
 P L114-3
 (2a·b, 摩耗痕)



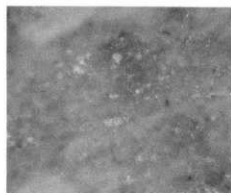
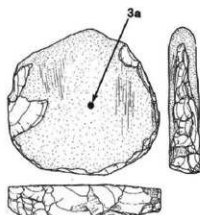
2 a x2.5



2 b x3.0

円盤状石製品

3. S B1661
 図版265-8
 P L114-8
 (3a, 摩耗痕)



3 a x5.0

3

台石 石皿

1. SB9
2. SB1469
3. SB1222
4. SB1478
5. SB440
6. SB803
7. SD1
8. SB85
9. SB529
10. SB147
11. SB722
12. SB168

(1 : 6)



1



2



3



4



5



6



7



8



9



10



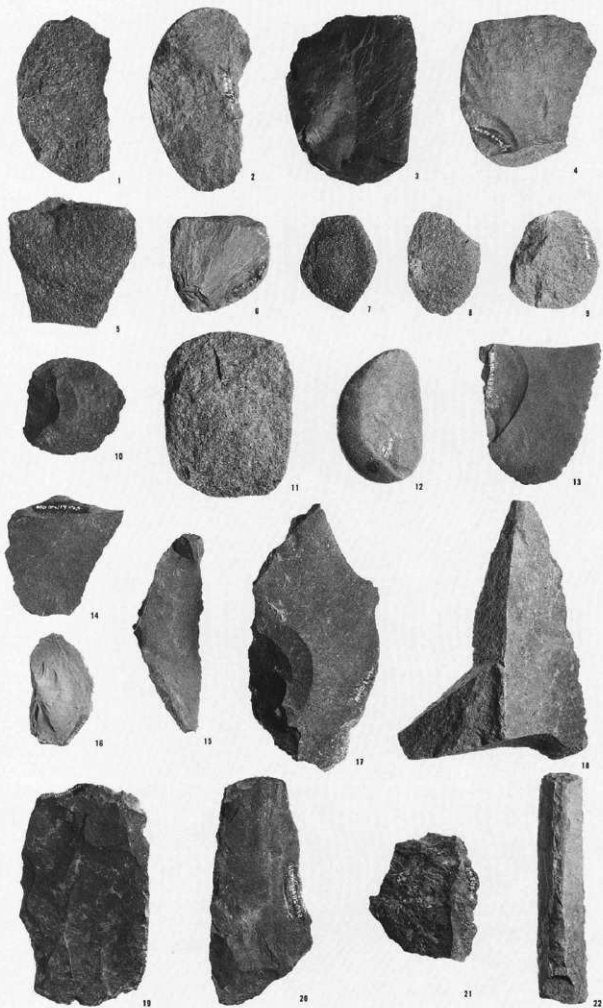
11

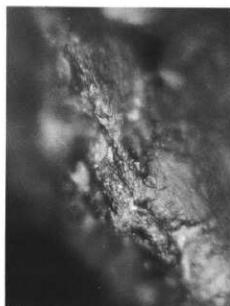
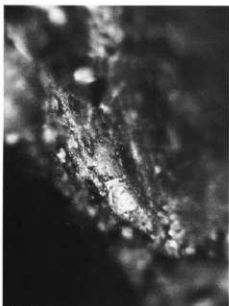
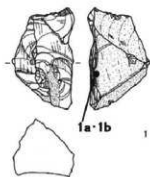


12

大形刃器

1. SB1473
 2. SB457
 3. SB1469
 4. IVS 3・4
 5. IVS 3・4
 6. IVS 3・4
 7. SB1469
 8. SB1469
 9. IVS 8
 10. SB159
 11. SB1681
 12. IVS 16
 13. SB1488
 14. IVN19
 15. SB1480
 16. SD79
 17. IVS 8
 18. SB1469
 19. SK3277
 20. SB440
 21. IVS 8
 22. IVS 8
- (1 : 2)





1 a

×25

1 b

×10

使用痕写真

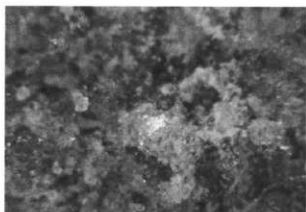
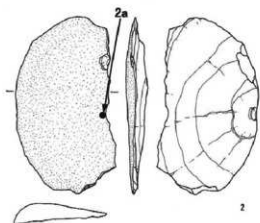
小形刃器

1. S D 79

図版261-2

P L 110-2

(1a・b, 刃部摩耗痕)



2 a

×10

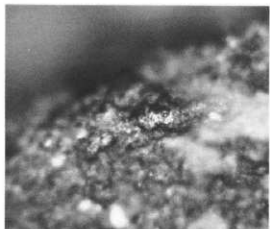
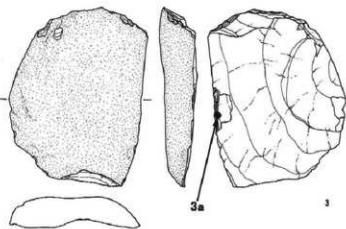
大形刃器II1a類

2. S B 1473

図版267-1

P L 117-1

(2a, 埋没光沢痕)



3 a

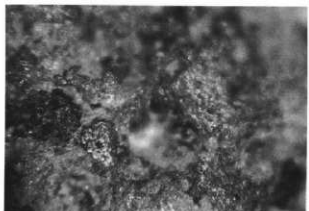
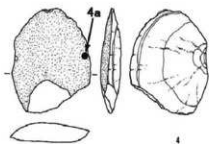
×25

3. S B 1469

図版267-3

P L 117-3

(3a, 刃部摩耗光沢痕)



4 a

×25

大形刃器IV1a類

4. S B 1469

図版267-8

P L 117-8

(4a, 埋没光沢痕)

使用痕写真

大形刃器IIIa類

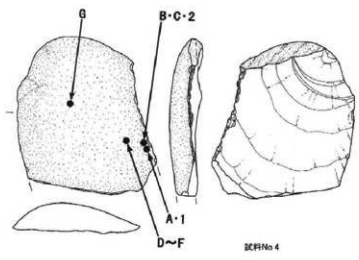
IVS 3・4

(写真A~G)

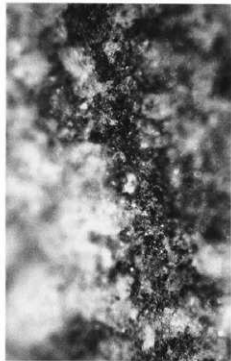
図版267-4

PL117-4

(A~E, 刃部摩耗光沢痕)

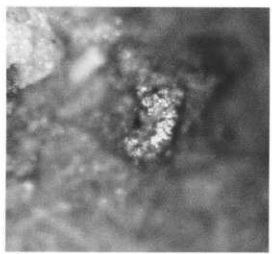


図版No 4



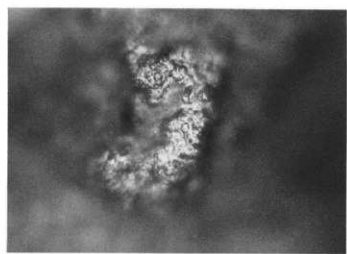
A

×25



B

×25



C

×30



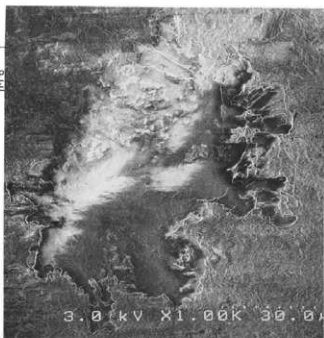
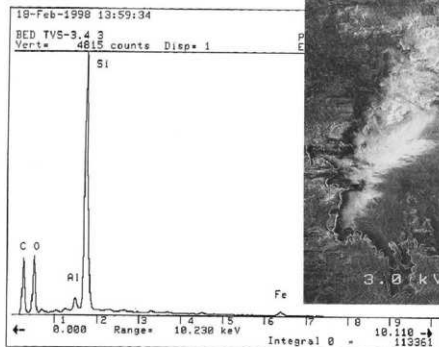
D

×200

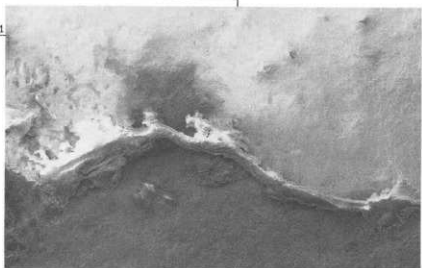
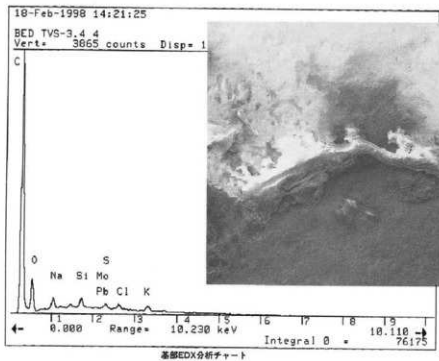


E

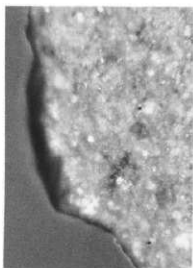
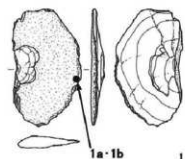
×500



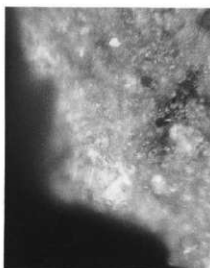
使用痕写真
 (F, 刃部磨耗光沢状)



(G, 基部付着物)



1 a X25



1 b X38

大形刃器IV2B類
 1. SD79
 図版268-16
 PL117-16
 (1a・b, 刃部磨耗線状)

使用痕写真

大形刃器IV1a類

IVS 3・4

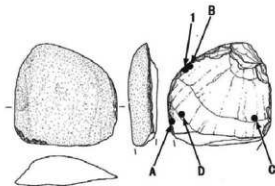
(写真A-D)

図版267-6

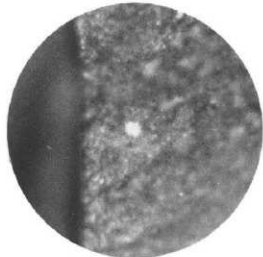
PL117-6

(A・B、刃部摩耗光沢状)

(C、基部摩耗状?)

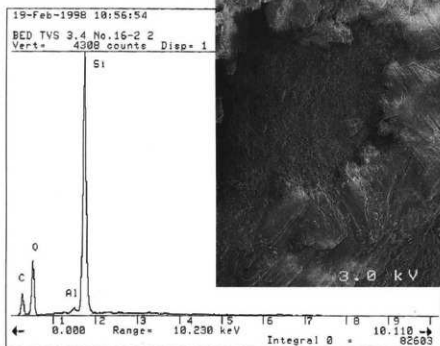


図版No 5

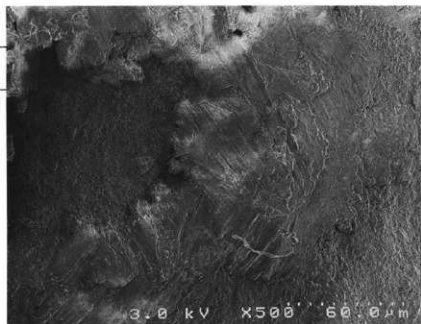


A

x23

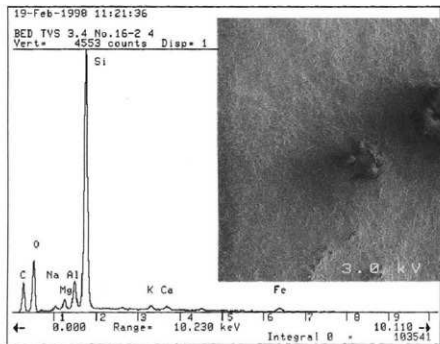


刃部EDX分析チャート

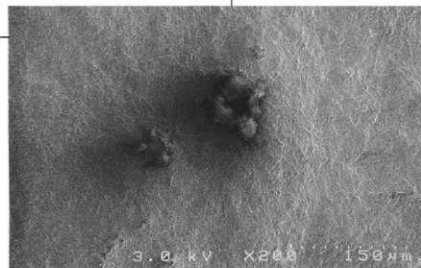


B

x100

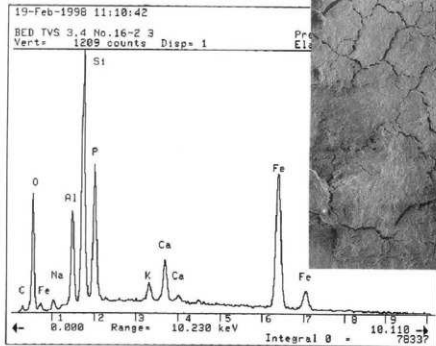


基部EDX分析チャート



C

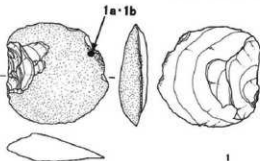
x200



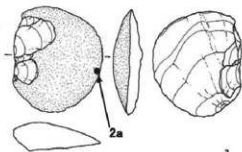
基部EDX分析チャート



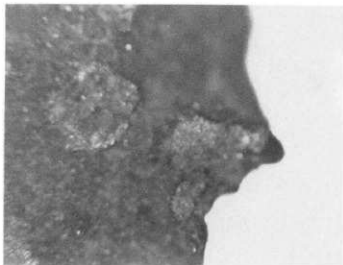
使用痕写真
 (D、基部付着物)



1



2



1 a

x25

大形刃器IV2A類

1. SB159

図版268-10

PL117-10

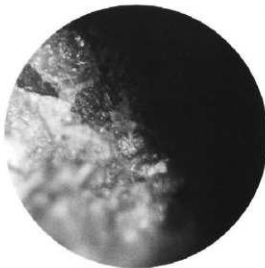
(1a・b、刃部
 摩耗線状痕?)

2. IVS 8

図版268-9

PL117-9

(2a、埋没光沢痕)



2 a

x25



1 b

x25

使用痕写真

大形刃器II類特殊

SB1681

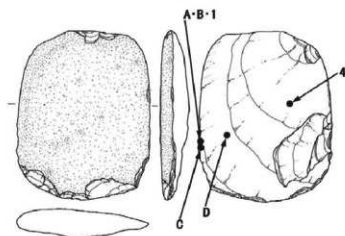
図版268-11

PL117-11

(A-C、刃部

摩耗光沢痕)

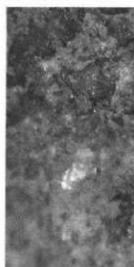
(D、基部付着物)



試料No 6



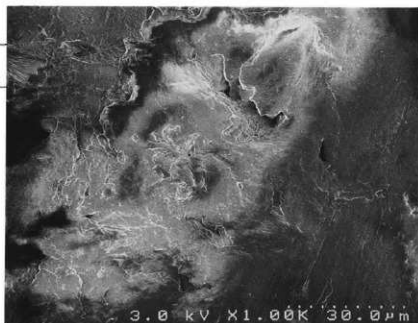
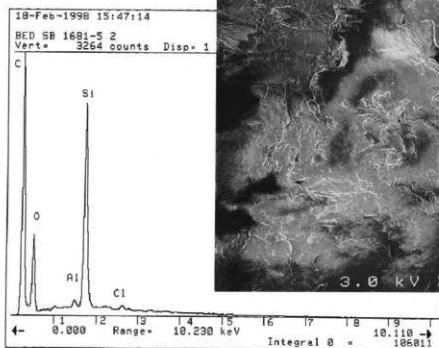
A



B

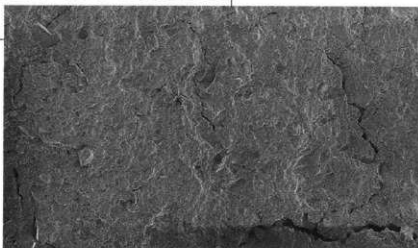
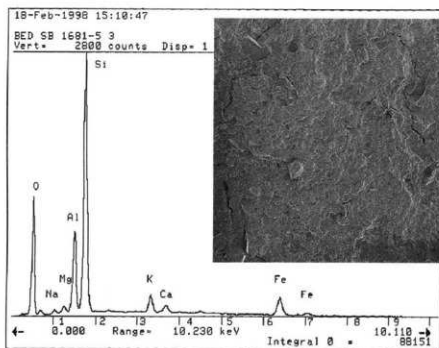
X25

X50



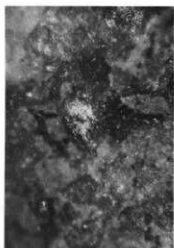
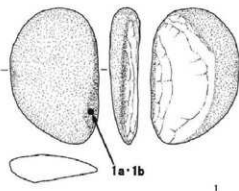
C

X1000



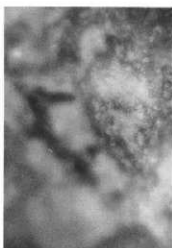
D

X200



1 a

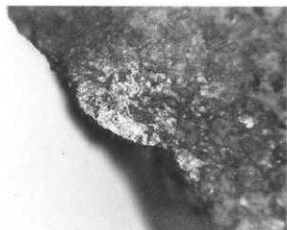
x25



1 b

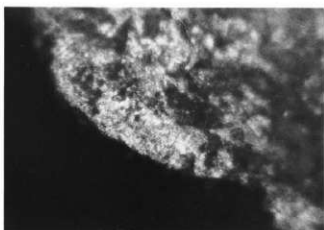
x50

使用痕写真
大形刃器III2C類
1. IV S 16
図版268-12
P L 117-12
(1a・b, 刃部
摩耗光沢痕)



2 a

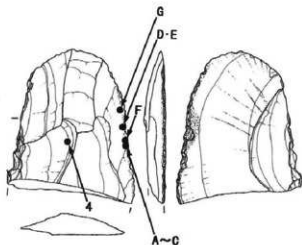
x25



2 b

x50

2. SG 3
図版-なし
P L-なし
(2a・b, 刃部
摩耗痕)



図版No. 8



A

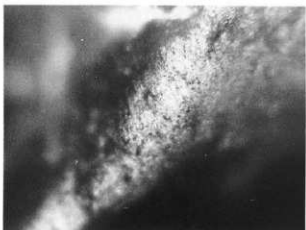
x25

大形刃器III2B類
S B 1488
(写真A~G)
図版268-13
P L 117-13
(A, 刃部
摩耗光沢痕)
(B・C, 刃部
摩耗線状痕)



B

x25



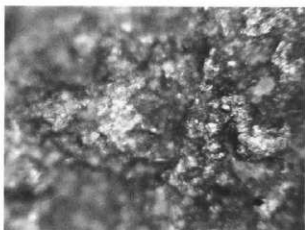
C

x50

使用痕写真

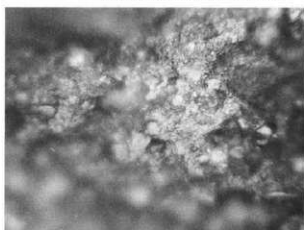
(D~G, 刃部

摩耗光沢観)



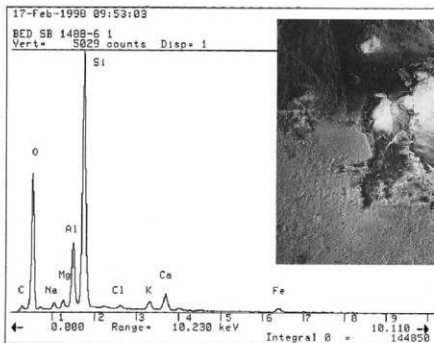
D

X15



E

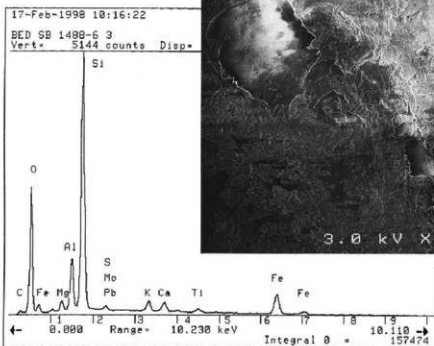
X15



F

X100

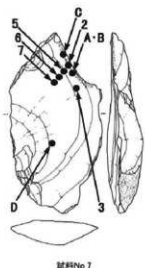
刃部EDX分析チャート



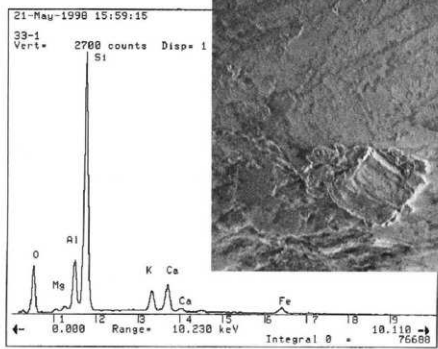
G

X1000

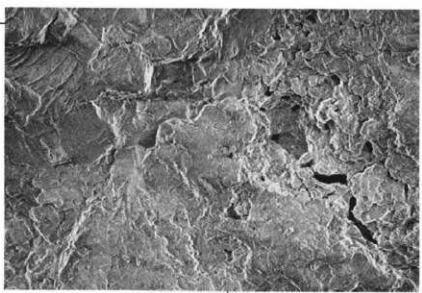
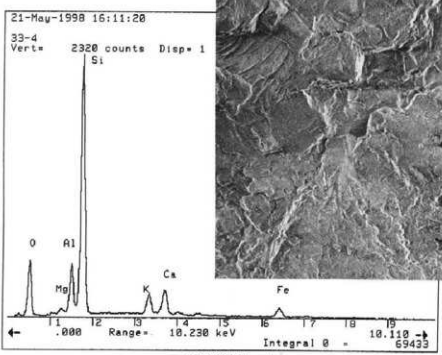
刃部EDX分析チャート



使用痕写真
 大形刃器 I 1b類
 IVS 8
 図版269-17
 P L 117-17
 (A・B, 刃部摩耗光沢痕)
 (C, 刃部摩耗痕)
 (D, 基部割離面)



刃部EDX分析チャート



基部EDX分析チャート

磨製石包丁

1. SK14711

2. SB837

3. SB1482

4. SK14711

5. SB1484

(1 : 1)



1



2



3



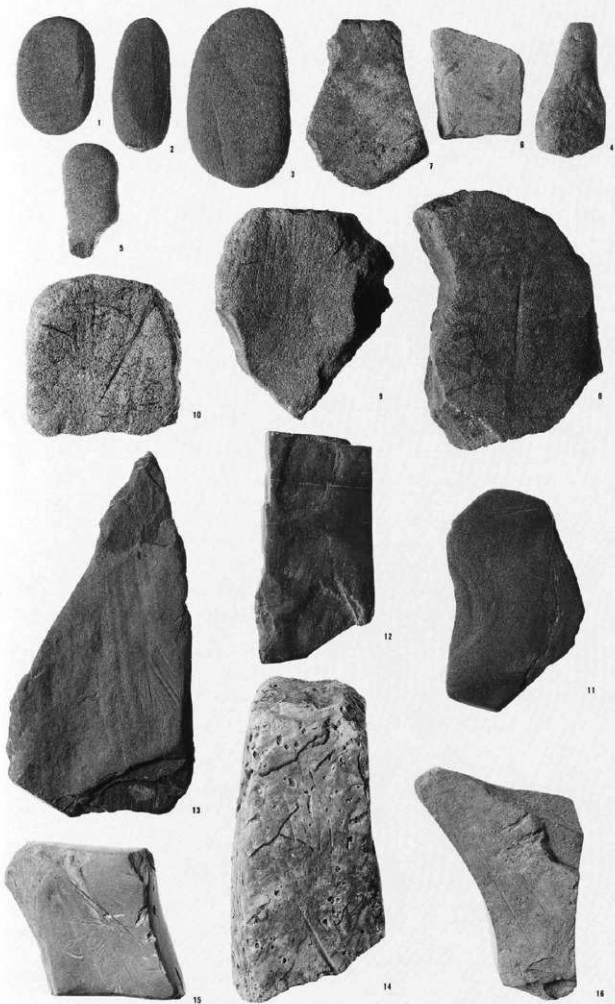
4



5

砥石

1. SG 3
 2. SB459
 3. SB1469
 4. IVN24
 5. IVN19
 6. SK14708
 7. IVW 6
 8. SB1473
 9. SB1473
 10. SB172
 11. S G 3
 12. SB355
 13. SB318
 14. SB227
 15. SD122
 16. SB1654
- (1 : 2)

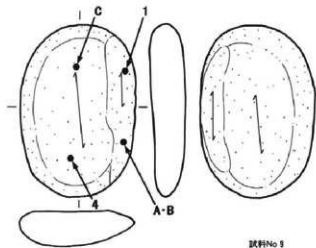


砥石

17. SB371
 18. SG 2
 19. SB1207
 20. SB1016
 21. SB138
 22. SB280
 23. IV11
 24. Z
 25. Z
 26. SB282
 27. SB215
 28. SB197
 29. SB486
 30. SB758
 31. SB1144
 32. SB507
 33. SB1427
 34. SK3603
 35. SB284
 36. SB216
 37. SB361
 38. SB316
 39. SK16267
 40. SB158
 41. SB1608

(1 : 2)





試料No 1



使用痕写真

砥石

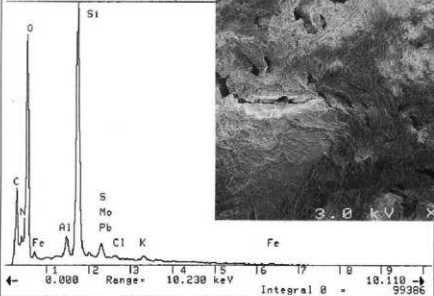
SG 3

図版271-1

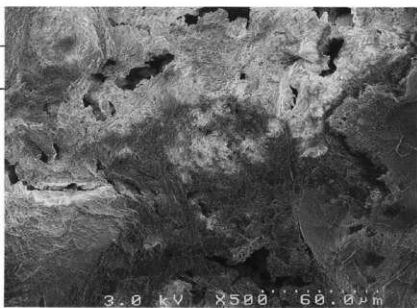
PL128-1

(A~C, 砥面摩耗部)

17-Feb-1998 11:21:34
BED SG 3-4216 2
Vert= 2805 counts Disp= 1

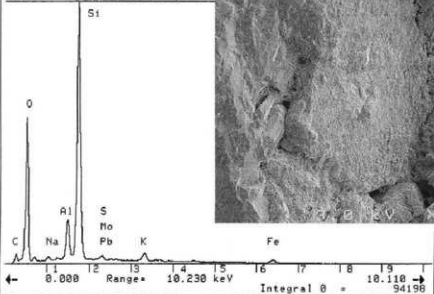


砥面EDX分析チャート

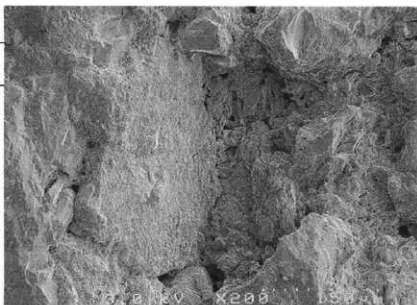


X500

17-Feb-1998 11:41:41
BED SG 3-4216 3
Vert= 3534 counts Disp= 1



砥面EDX分析チャート



X200

使用痕写真

砥石

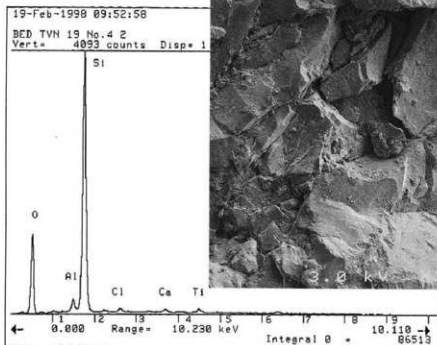
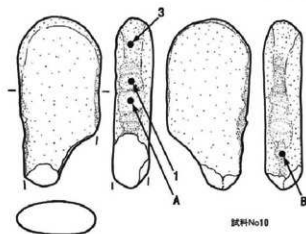
IVN19

図版271-5

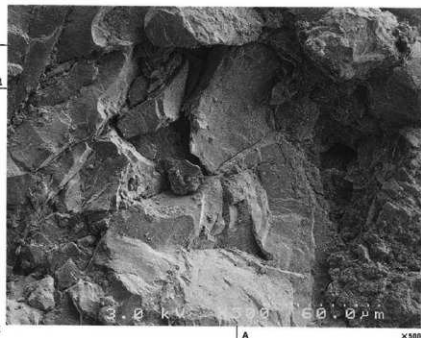
P.L128-5

(A, 自然面)

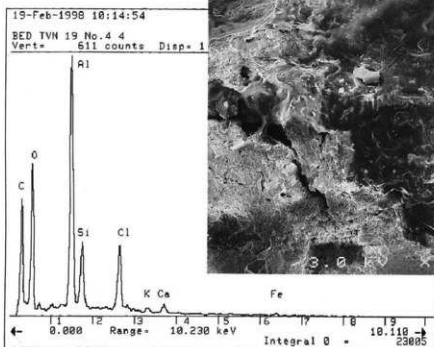
(B, 砥面付着物)



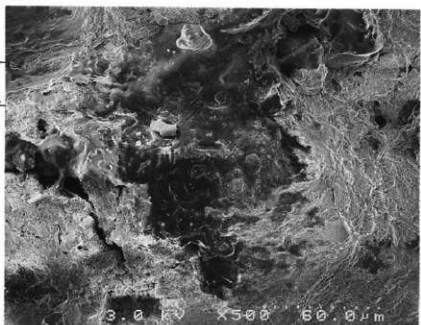
自然面EDX分析チャート



X500

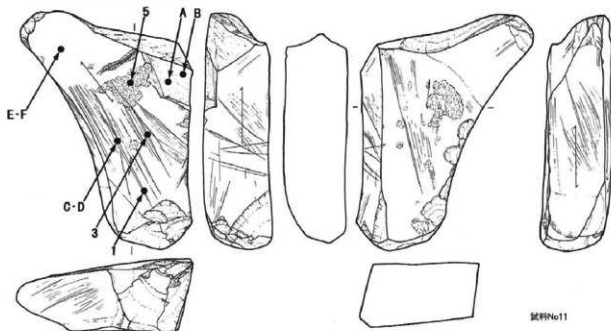


砥面EDX分析チャート



X500

PL132 弥生時代石器(31)



使用痕写真

紙石

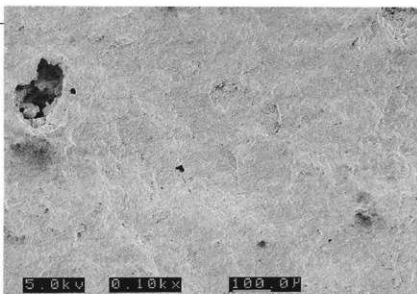
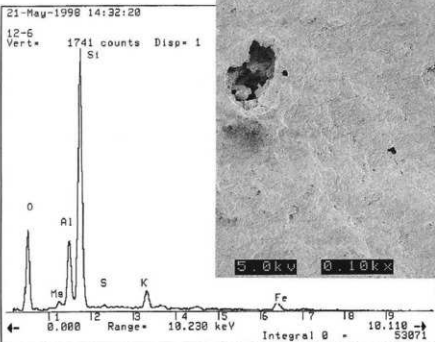
S B1654

(写真A-F)

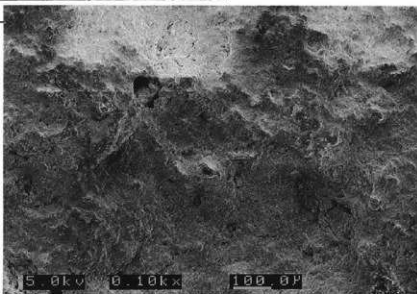
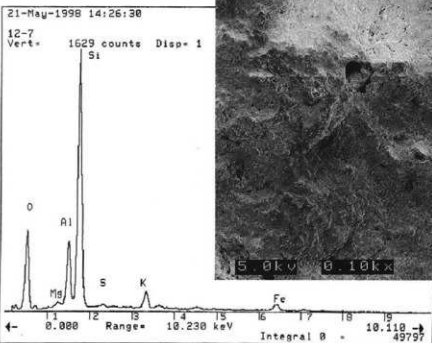
図版272-16

P L128-16

(A・B, 基部刺離面)



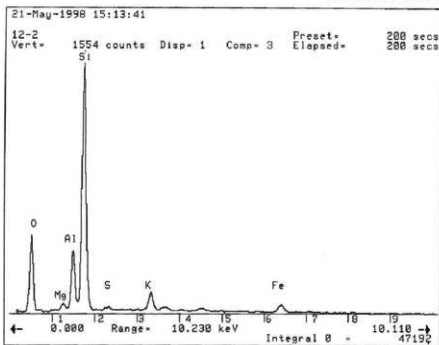
A X100



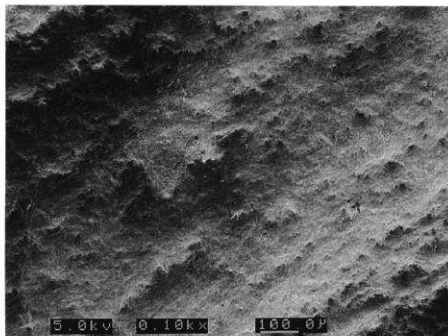
B X100

使用痕写真

(C・D、砥面溝内摩耗部)

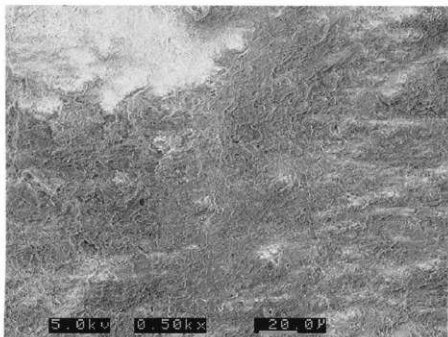


砥面溝内EDX分析チャート



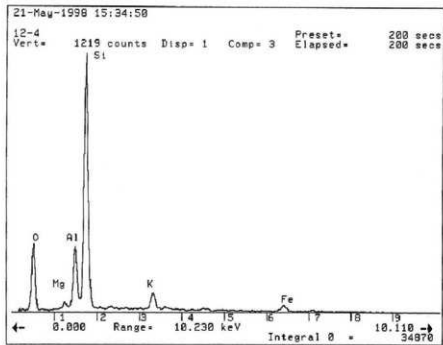
C

X100



D

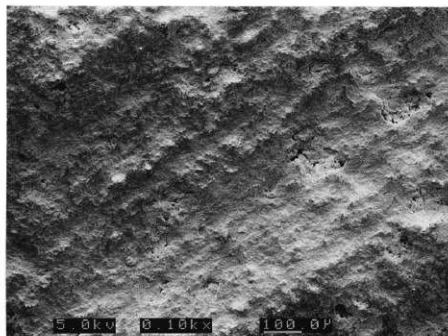
X500



砥面摩耗部EDX分析チャート

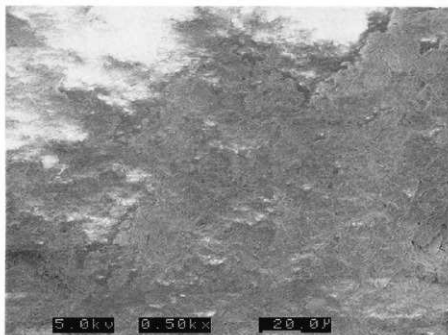
使用痕写真

(E・F、砥面摩耗部)



E

X100



F

X500