



左 SB22遺物出土状況
右 SB24遺物出土状況



左 SB24完掘
右 SB24遺物出土状況



左 SB24掘り方
右 SB24柱穴内土器出土状況



左 SB25遺物出土状況
右 SB25完掘

左 SB30西側完掘
右 SB30西側掘り方東側完掘



左 SB30木製品出土状況
右 SB30西側完掘

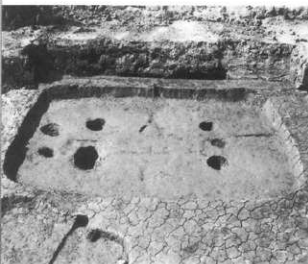


左 SB30柱穴内土器出土状況
右 SB30柱材検出状況

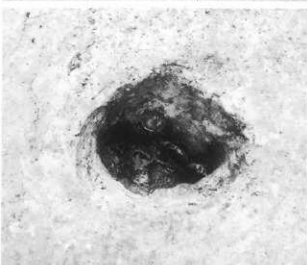


左 SB30柱材検出状況
右 SB30木製片口鉢出土状況

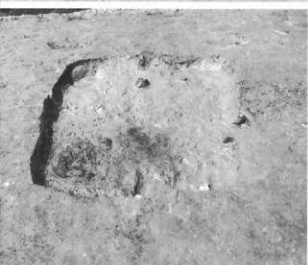




左 SB31完掘
右 SB31掘り方



左 SB31柱穴内木製品
出土状況
右 SB31柱穴内ヒョウ
タン出土状況

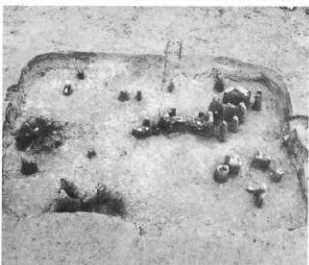


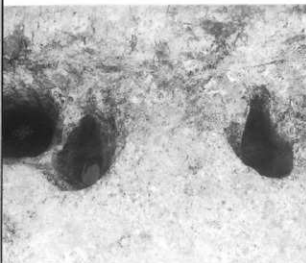
左 SB32完掘
右 SB32掘り方



左 SB32柱材検出状況
右 SB38完掘

SB38遺物出土状況

左 SB39遺物出土状況
右 SB39完掘左 SB39土器出土状況
右 SB41遺物出土状況左 SB42遺物出土状況
右 SB42完掘



左 SB42出入りロピット
右 SB101完掘



左 SB101遺物出土状況
右 SB101土器出土状況



左 SB102遺物出土状況
右 SB102完掘



左 SB102柱材検出状況
右 SB103遺物出土状況

左 SB104完掘

右 SB105遺物出土狀況



左 SB105完掘

右 SB105柱穴内礎石出土狀況



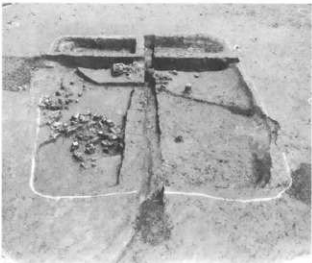
左 SB106遺物出土狀況

右 SB106土器出土狀況



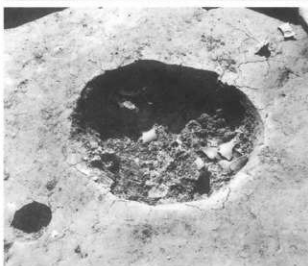
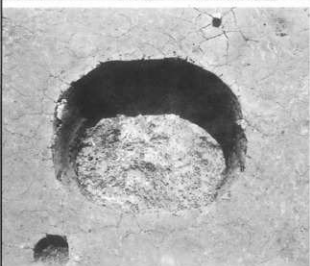
左 SB106完掘

右 SB108遺物出土狀況





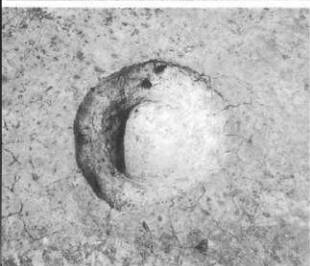
左 SB108遺物出土狀況
右 SB108完掘



左 SK121完掘
右 SK121遺物出土狀況



左 SK121土器出土狀況
右 SK121鹿骨出土狀況



左 SK120完掘
右 SK124完掘

左 SK85遺物出土状況
右 SK86遺物出土状況



左 SX06遺物出土状況
右 SK03完掘

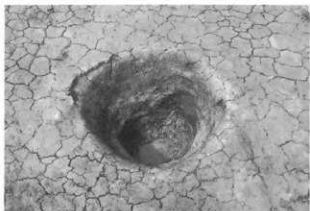
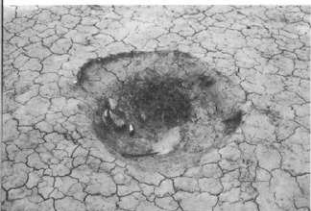


左 SK04遺物出土状況
右 SK04完掘



左 SK06完掘
右 SK09完掘

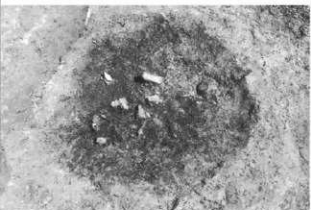




左 SK08遺物出土状況
右 SK08完掘



左 SK10完掘
右 SK13完掘



左 SK19遺物出土状況
右 SK19完掘

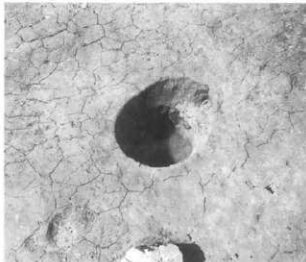


SK43井筒(丸木舟)検出
状況



左 SK35井筒検出状況

右 SK14完掘



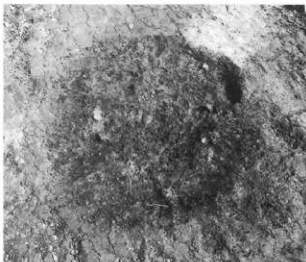
左 SK20完掘

右 SK51遺物出土状況



右 SX102遺物出土状況

左 SQ35遺物出土状況



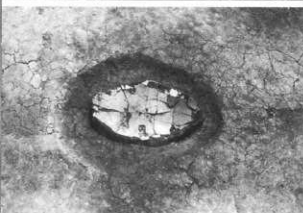
右 SK84完掘

左 ST101柱材検出状況





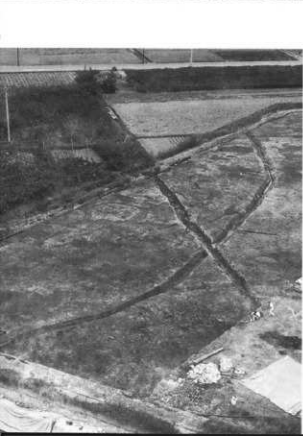
ST101柱材検出状況



左上 SK01土器棺出土状況

左下 SK49土器棺出土状況

右 SK57木棺検出状況



左 周溝墓群全景
(上空南東より)

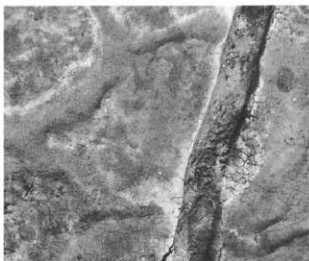
左上 SM01完掘

右F SM06完掘

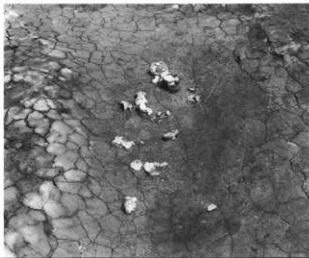
左 SM01·03完掘
右 SM04·05完掘

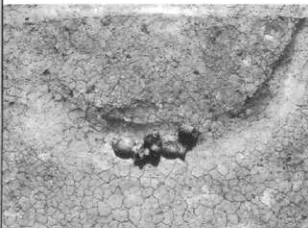


左 SM06完掘
右 SM06周溝内遺物出土狀況



SM06周溝内土器出土狀況





左 SM07周溝内土器出土
狀況
右 SM08完掘



左 SM10土器出土狀況
右 SM08-09完掘



左 SM12周溝内土器出土
狀況
右 SM15周溝内土器出土
狀況



左 SM14周溝内土器出土
狀況
右 SM14完掘

Ⅶ区 弥生時代中期清址
全景
SD15・24・25・26
(上空より)



SD24・25・26完掘



左 弥生後期水田面上
溝址
SD12
右 SD34・35



左 弥生後期水田址全景
(上空南東より)
右 SD11





左 VII区 弥生後期水田・
溝址
SD12
右 VII区 弥生後期・古墳
前期溝址
SD28・31・32



左 VII区 弥生後期溝址
SD32・34・35
右 VII区 弥生後期・古墳
前期溝址
SD28・31・32



左 VII区 弥生後期溝址
SD31・32
右 IV区 弥生中期溝址
SD43



VII区 弥生後期溝址
SD103・104・
105・106・107

左 VI区 弥生後期清址
SD103・105
右 SD104



IV区 弥生終末期清址
SD16



IV区 弥生後期清址と
周辺遺構
SD16・17・18
SB20・SK4313か
(上空より)



I区 弥生後期清址
SD17・48

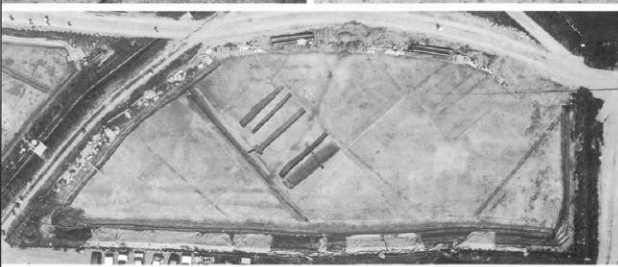




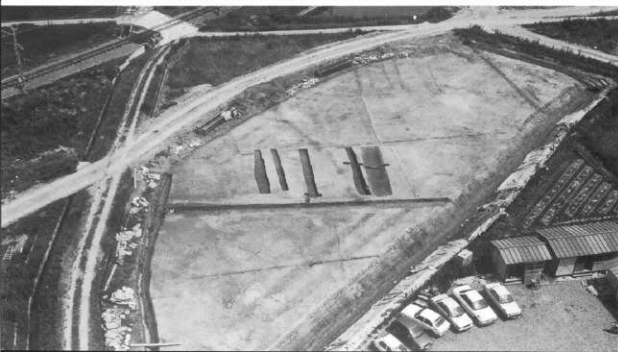
左 VII区 古墳後期課址
SD29-30
右 I区Vグリッド
須恵器壺出土状況



左 VII区Aグリッド
近世水田址
右 I区Vグリッド
環出土状況



VII区 近世水田址全景
(上空より)



VII区 近世水田址全景
(上空南東より)

- 1 SK121 3
- 2 SK121 4
- 3 IIIAグリッド
- 4 SK121 2
- 5 SK121 1
- 6 SK121 10
- 7 SK121 12
- 8 SK121 34
- 9 SK121 21
- 10 SK121 11
- 11 SK121 13
- 12 SK121 47
- 13 SK121 27
- 14 SK121 33
- 15 SK121 35
- 16 SK121 14
- 17 SK121 15
- 18 SK121 17
- 19 SK121 40
- 20 SK121
- 21 SK121 45
- 22 SK121 42
- 23 SK121 37
- 24 SK121
- 25 SK121
- 26 SK121 48
- 27 SK121 44
- 28 SK121
- 29 SK121 38
- 30 SK121 41
- 31 SK121 31
- 32 SK121 36
- 33 SK121 49
- 34 SK121 43



1



2



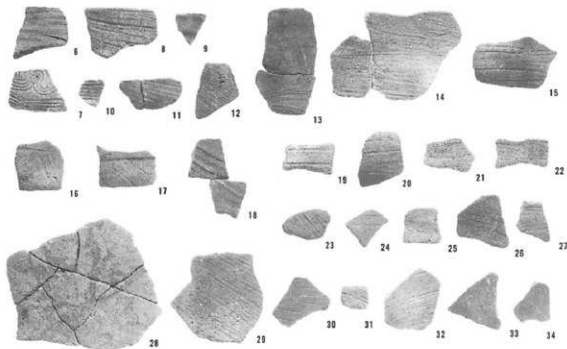
3



4



5



- | | | |
|---|------|----|
| 1 | SB01 | 5 |
| 2 | SB01 | 7 |
| 3 | SB01 | 12 |
| 4 | SB01 | 11 |
| 5 | SB26 | 4 |
| 6 | SB33 | 3 |
| 7 | SB33 | 1 |
| 8 | SB33 | 2 |



1



2



5



3



4



6



7



8



右側面

- 1 SB36 13
- 2 SB36 12
- 3 SB36 7
- 4 SB37 12
- 5 SB37 5
- 6 SB40 5
- 7 SB40 8
- 8 SB02 8
- 9 SB02 16
- 10 SB02 9



1



2



3



4



5



6



7



8



9



10

- | | | |
|----|------|----|
| 1 | SB02 | 14 |
| 2 | SB03 | 3 |
| 3 | SB06 | 1 |
| 4 | SB06 | 12 |
| 5 | SB13 | 1 |
| 6 | SB09 | 9 |
| 7 | SB09 | 10 |
| 8 | SB11 | 9 |
| 9 | SB12 | 9 |
| 10 | SB12 | 15 |
| 11 | SB14 | 13 |



1



2



3



4



6



5



7



8



9



10



11

- 1 SB15 1
- 2 SB15 2
- 3 SB16 4
- 4 SB16 5
- 5 SB18 12
- 6 SB18 12
- 7 SB17 4
- 8 SB20 19
- 9 SB20 10



1



4



7



2



3



5



8



9



6

- | | | |
|---|------|----|
| 1 | SB20 | 3 |
| 2 | SB20 | 1 |
| 3 | SB20 | 13 |
| 4 | SB21 | 1 |
| 5 | SB22 | 9 |
| 6 | SB22 | 22 |
| 7 | SB24 | 12 |
| 8 | SB24 | 14 |



1



4



5



2



6



7



3



8

- 1 SB25 10
- 2 SB31 7
- 3 SB31 2
- 4 SB30 8 (1 : 4)
- 5 SB38 4 (1 : 4)
- 6 SB38 9
- 7 SB39 2
- 8 SB38 7
- 9 SB39 3



1



2



3



5



4



7



6



8



9

- 1 SB101 1 (1:4)
 2 SB101 3
 3 SB101 2
 4 SB102 3
 5 SB106 2
 6 SB106 1



1	SB108	1
2	SB108	8
3	SB106	11
4	SB106	3
5	SK06	1
6	SK06	3
7	SK04	6
8	SK19	2



1



2



3



4



5



7



6



8

- 1 SK01 1 (1:4)
 2 SK35 19
 3 SK35 2
 4 SK35 1
 5 SK35 3
 6 SK35 7



- 1 SK35 4
- 2 SK35 14
- 3 SK35 17
- 4 SK35 20
- 5 SK51 1 (1:4)
- 6 SQ07 (1:4)
- 7 SQ41 (1:4)
- 8 SQ41 (1:4)



1 SQ48 (1:4)

2 SQ54 (1:4)

3 SQ43 (1:4)

4 SD103

5 SD47

6 SD16 (1:5)

7 SD103 (1:5)



1



2



3



4



5



6



7

- 1 SM01集合
- 2 SM01 1
- 3 SM01 2
- 4 SM01 5
- 5 SM01 3
- 6 SM01 7



- 1 SM01 4
 2 SM02 9 (1:4)
 3 SM02 7
 4 SM02 3
 5 SM02 5
 6 SM07集合
 7 SM02集合



1



2



3



4



5



6



7

- 1 SM07 6
- 2 SM07 1
- 3 SM03 1
- 4 SM03 2
- 5 SM03 3
- 6 SM03 6
- 7 SM03 5
- 8 SM03 4
- 9 SM03集合



2



1



3



4



6



5



7

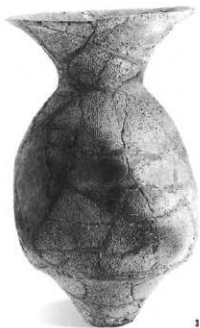


8



9

- 1 SM04集合
- 2 SM04 1 (1:4)
- 3 SM04 2 (1:4)
- 4 SM04 3
- 5 SM04 7
- 6 SM04 5



- 1 SM04 8
- 2 SM05 4
- 3 SM05 1
- 4 SM05 3
- 5 SM05 2
- 6 SM05集合



- 1 SM06集合
- 2 SM12集合



- 1 SM06 4
- 2 SM06 3
- 3 SM06 1
- 4 SM06 8
- 5 SM06 9
- 6 SM06 16
- 7 SM06 12
- 8 SM06 17



1



2



3



4



5



6



7



8

- 1 SM06 15
- 2 SM06 21
- 3 SM06 24
- 4 SM06 26
- 5 SM06 27
- 6 SM06 25
- 7 SM06 29
- 8 SM12 10
- 9 SM12 2
- 10 SM12 3
- 11 SM12 1
- 12 SM12 4
- 13 SM12 8



1



2



3



4



5



6



7



8



9



10



11



12



13

- 1 SM12 5
- 2 SM12 6
- 3 SM12 12
- 4 SM12 14
- 5 SM12 13
- 6 SM10 3
- 7 SM10 2
- 8 SM15 2
- 9 SM16 2



1



2



3



4



5



6



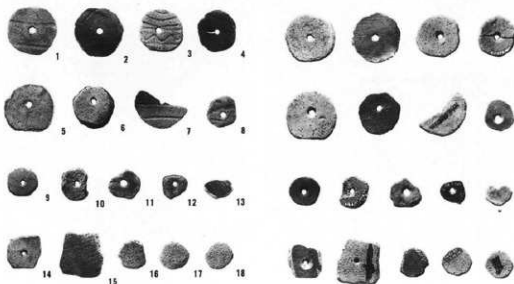
8



7



9



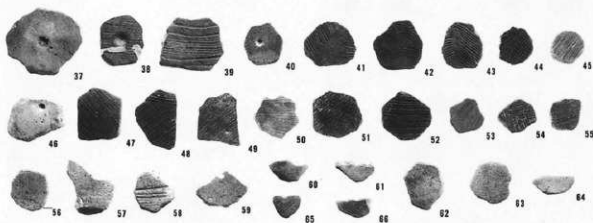
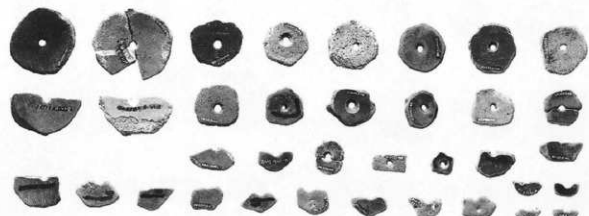
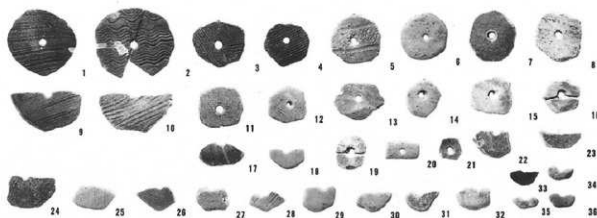
- | | | |
|----|-------|----|
| 1 | SB20 | 24 |
| 2 | SB20 | 23 |
| 3 | SB38 | 14 |
| 4 | SB18 | 32 |
| 5 | SB34 | 6 |
| 6 | SB106 | 20 |
| 7 | SB106 | 22 |
| 8 | SB106 | 21 |
| 9 | SB106 | 24 |
| 10 | SB11 | 10 |
| 11 | SB13 | 7 |
| 12 | SK35 | 25 |
| 13 | SQ09 | |
| 14 | SB03 | 10 |
| 15 | SD32 | |
| 16 | SB17 | 11 |

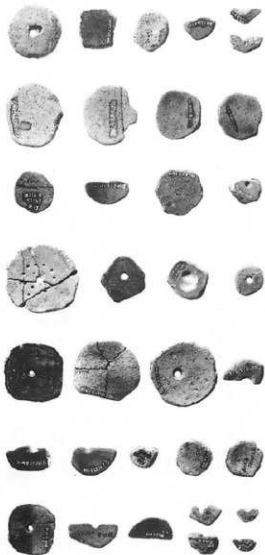
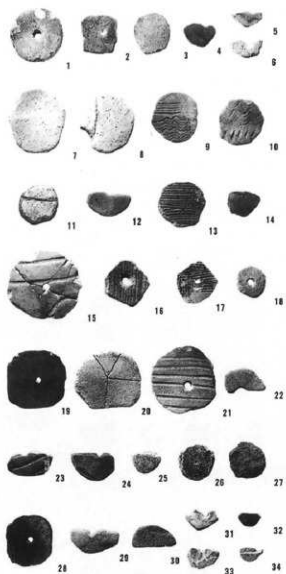
SB08 土製円盤

- | | | |
|----|------|----|
| 1 | SB08 | 6 |
| 2 | SB08 | 5 |
| 3 | SB08 | 11 |
| 4 | SB08 | 7 |
| 5 | SB08 | 10 |
| 6 | SB08 | 9 |
| 7 | SB08 | 8 |
| 8 | SB08 | 13 |
| 9 | SB08 | 12 |
| 10 | SB08 | 15 |
| 11 | SB08 | 14 |
| 12 | SB08 | 17 |
| 13 | SB08 | 18 |
| 14 | SB08 | 16 |
| 15 | SB08 | 19 |
| 16 | SB08 | 21 |
| 17 | SB08 | 22 |
| 18 | SB08 | 20 |

SB40 土製円盤

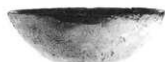
- | | | | |
|----|----|----|----|
| 1 | 12 | 37 | 45 |
| 2 | 11 | 38 | 48 |
| 3 | 13 | 39 | 46 |
| 4 | 14 | 40 | 49 |
| 5 | 40 | 41 | 67 |
| 6 | 25 | 42 | 66 |
| 7 | 24 | 43 | 68 |
| 8 | 26 | 44 | 73 |
| 9 | 22 | 45 | 74 |
| 10 | 17 | 46 | 50 |
| 11 | 15 | 47 | 47 |
| 12 | 16 | 48 | 56 |
| 13 | 29 | 49 | 57 |
| 14 | 27 | 50 | 52 |
| 15 | 30 | 51 | 69 |
| 16 | 31 | 52 | 65 |
| 17 | 19 | 53 | 71 |
| 18 | 43 | 54 | 70 |
| 19 | 32 | 55 | 61 |
| 20 | 41 | 56 | 53 |
| 21 | 28 | 57 | 58 |
| 22 | 35 | 58 | 54 |
| 23 | 60 | 59 | 62 |
| 24 | 18 | 60 | 55 |
| 25 | 23 | 61 | 51 |
| 26 | 21 | 62 | 75 |
| 27 | 42 | 63 | 72 |
| 28 | 20 | 64 | 76 |
| 29 | 44 | 65 | 64 |
| 30 | 36 | 66 | 63 |
| 31 | 37 | | |
| 32 | 59 | | |
| 33 | 39 | | |
| 34 | 34 | | |
| 35 | 33 | | |
| 36 | 38 | | |



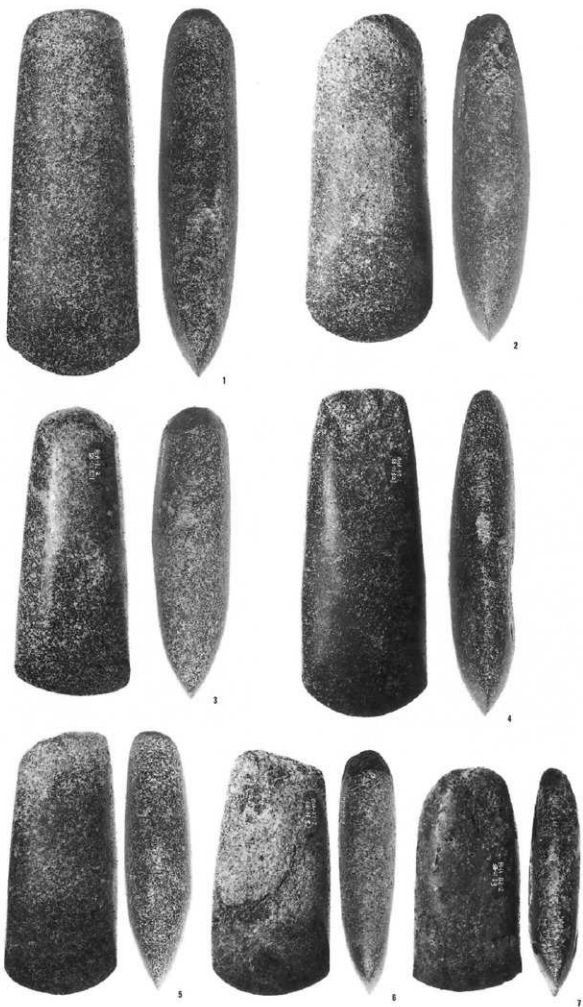


- 1 SB02 19
- 2 SB02 20
- 3 SB03 11
- 4 SB03 12
- 5 SB03 14
- 6 SB03 13
- 7 SB05 11
- 8 SB05 10
- 9 SB05 9
- 10 SB05 13
- 11 SB05 12
- 12 SB05 8
- 13 SB19 6
- 14 SB19 7
- 15 SB07 10
- 16 SB07 11
- 17 SB07 12
- 18 SB37 28
- 19 SB33 5
- 20 SB33 6
- 21 SB34 7
- 22 SB34 8
- 23 SB36 18
- 24 SB36 19
- 25 SB36 20
- 26 SB36 17
- 27 SB37 28
- 28 Mグリッド
- 29 SM15 7
- 30 SK86
- 31 Mグリッド
- 32 Mグリッド
- 33 Mグリッド
- 34 Mグリッド

III区Aグリッド
4層遺物集中



- 1 SB01 T24
 2 SB01 T20
 3 SB01 T21
 4 SB01 T23
 5 SB01 T22
 6 SB01 T 2
 7 SB01 T 3



- 1 IV区Dグリッド
- 2 SQ44
- 3 IV区Dグリッド
- 4 IV区Dグリッド
- 5 SB08 T 5
- 6 SB19 T 3
- 7 SB35 T 4
- 8 SB33 T 1
- 9 試掘地点



1



2



3

4

5



6



7

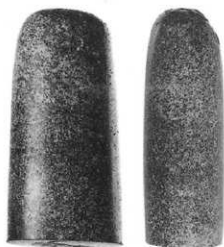


8



9

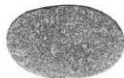
- 1 SB01 T6
- 2 IVEQグリッド
- 3 SK85
- 4 SK85
- 5 SB05 T12
- 6 SK83



1



2



3



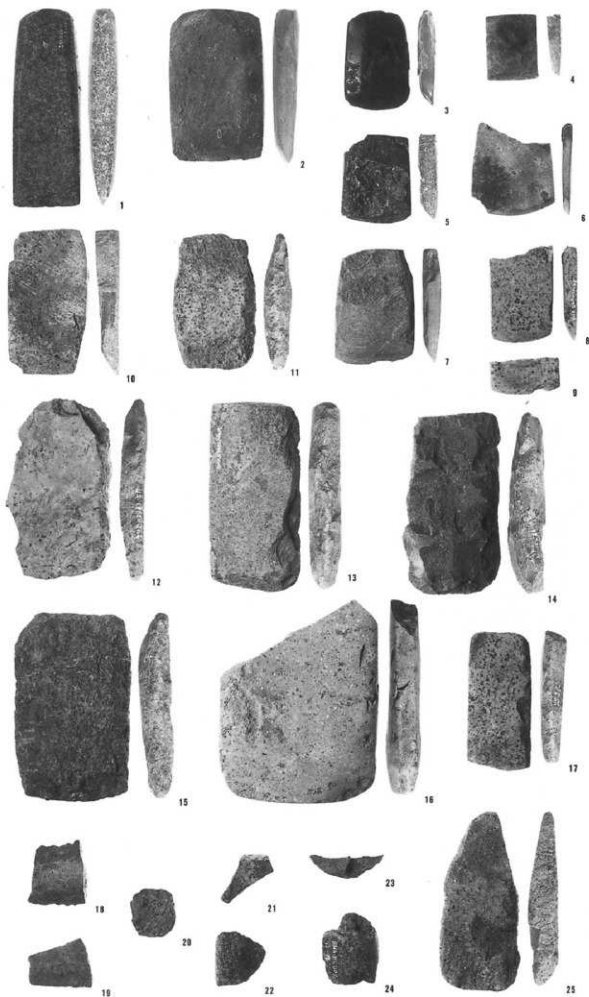
4



5

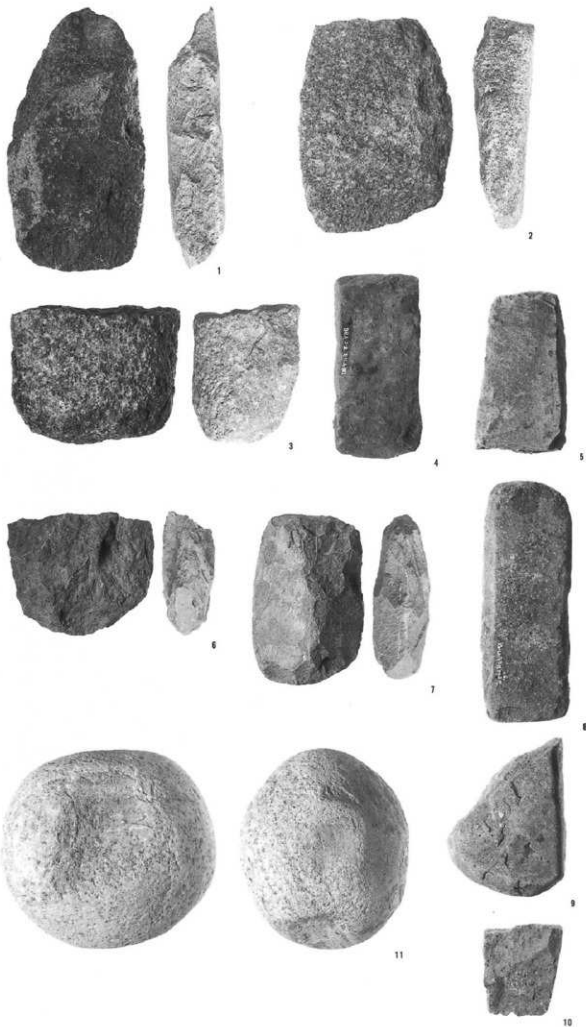


6



- | | | |
|----|-------|------|
| 1 | SB08 | T 6 |
| 2 | SB05 | T13 |
| 3 | SB01 | T 5 |
| 4 | SB01 | T15 |
| 5 | SK57 | |
| 6 | IVEKM | グリッド |
| 7 | IVEKM | グリッド |
| 8 | SB40 | T 1 |
| 9 | SB11 | T 2 |
| 10 | SB34 | T12 |
| 11 | SB37 | T 4 |
| 12 | SB33 | T12 |
| 13 | SB40 | T 2 |
| 14 | SB05 | T14 |
| 15 | SB26 | T 1 |
| 16 | IVEKM | グリッド |
| 17 | SB05 | T15 |
| 18 | IVEKM | グリッド |
| 19 | SB40 | T 3 |
| 20 | SB07 | T 1 |
| 21 | SB03 | T 6 |
| 22 | SB03 | T 5 |
| 23 | SB37 | T15 |
| 24 | SB08 | T 3 |
| 25 | SB26 | T 3 |

- 1 SB07 T3
 2 SB34 T6
 3 SK86
 4 IVEKMグリッド
 5 IVEKMグリッド
 6 SB14 T4
 7 SB05 T16
 8 SB37 T10
 9 SB05 T6
 10 IVEKMグリッド
 11 SB26 T7 (1:3)



- 1 SB10 T 4
- 2 SB08 T 7
- 3 SB36 T 5
- 3 IVEKMグリッド
- 4 SB33 T10
- 5 SB33 T 2
- 6 SB33 T11
- 7 IVEKMグリッド
- 8 SB07 T 4
- 9 SB33 T 4
- 10 SB33 T 5
- 11 SB35 T 3



1



2



3



4



5



6



7



8

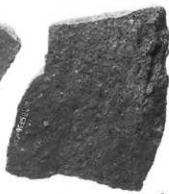


9



10

- 1 SB37 T 8
- 2 SB40 T 7
- 3 SK50
- 4 SB37 T 7
- 5 SB41 T 2
- 6 SB37 T 4
- 7 SB34 T10
- 8 SB26 T 2
- 9 SB36 T 4
- 10 SB05 T 2
- 11 SB03 T 4
- 12 SB05 T 3

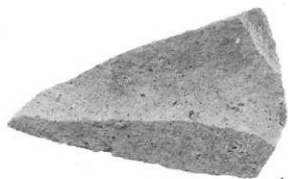


10

11

12

- 1 SB34 T1
- 2 IVXE グリッド
- 3 SB34 T2
- 4 SB37 T3
- 5 SB33 T7
- 6 SB37 T6
- 7 SB14 T2
- 8 SB26 T4
- 9 SB40 T9
- 10 SB40 T8
- 11 SB39 T1
- 12 SB33 T6
- 13 SB35 T2
- 14 SB04 T3
- 15 SB06 T10
- 16 SB40 T11
- 17 SB24 T1
- 18 SB40 T10



1



2



3



4



5



6



7



8



9



10



11



12



13



14



15



16

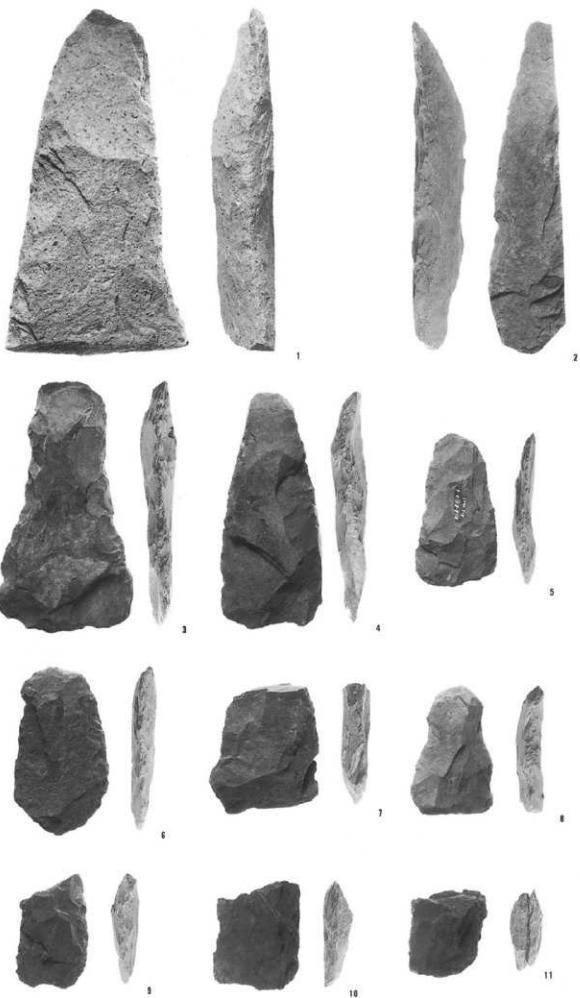


17



18

- 1 SB35 T 1
- 2 IV区Aグリッド
- 3 IV区Eグリッド
- 4 SK120
- 5 III区Aグリッド
- 6 III区Aグリッド
- 7 SB34 T 4
- 8 III区Aグリッド
- 9 III区Aグリッド
- 10 III区Aグリッド
- 11 III区Aグリッド



- | | | |
|----|-------|------|
| 1 | SB23 | T 2 |
| 2 | SB23 | T 3 |
| 3 | SB106 | T 1 |
| 4 | SB106 | T 3 |
| 5 | SB20 | T 2 |
| 6 | IIIKA | グリッド |
| 7 | IVK 1 | グリッド |
| 8 | SB05 | T 5 |
| 9 | SB05 | T 7 |
| 10 | SD16 | |
| 11 | SB34 | T 5 |
| 12 | SK07 | |
| 13 | SB34 | T 3 |
| 14 | SB02 | T 2 |
| 15 | IVKM | グリッド |
| 16 | SK124 | |
| 17 | SB05 | T 11 |



1



2



3



4



5



6



7



8



9



10



11



12



13



14



15

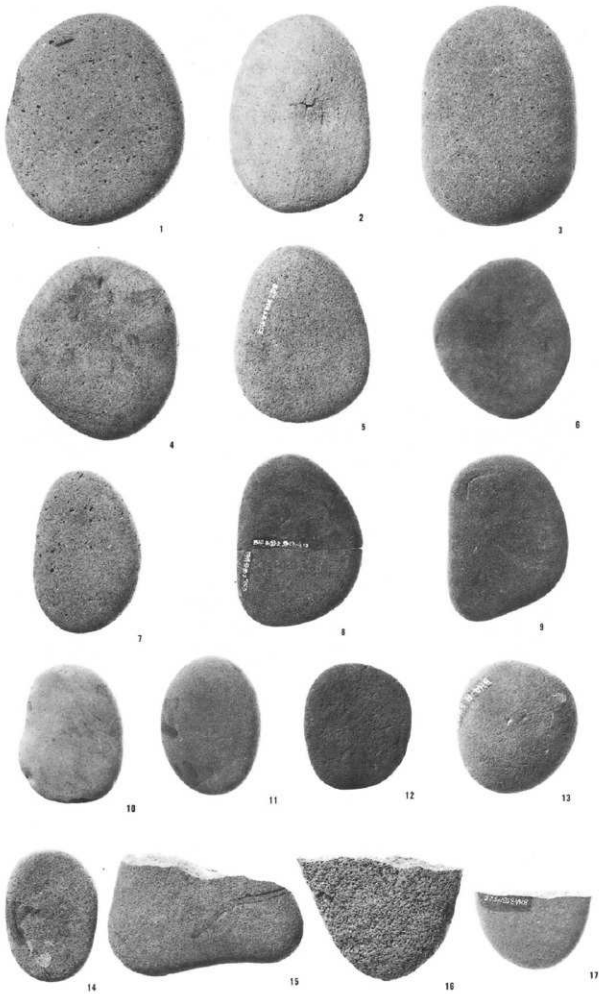


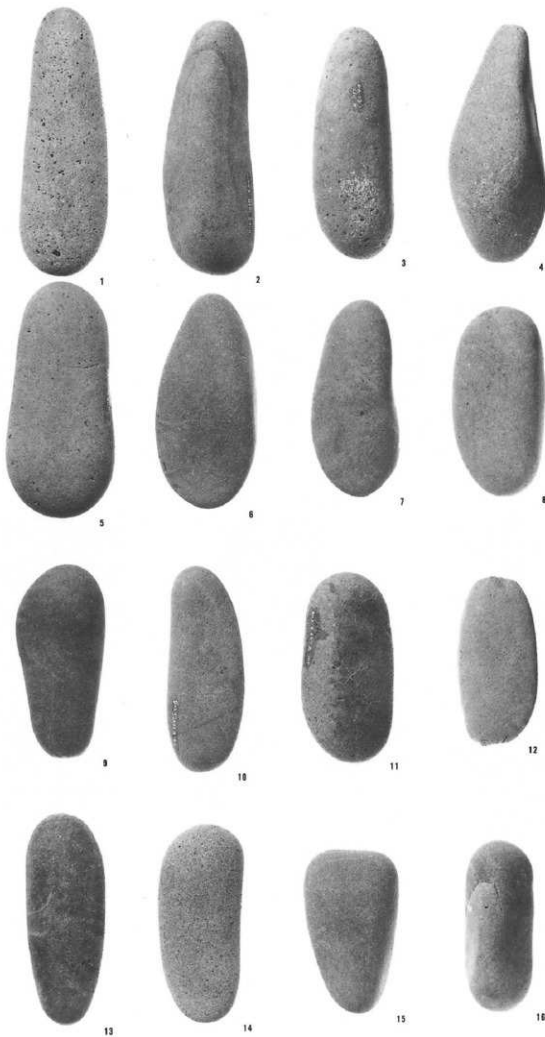
16



17

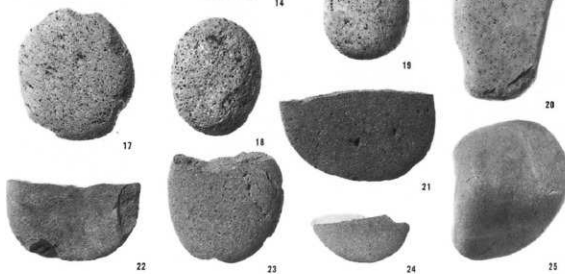
- | | | |
|----|-------|-----|
| 1 | SB10 | T3 |
| 2 | SB13 | T1 |
| 3 | SB24 | T2 |
| 4 | SB37 | T11 |
| 5 | SB24 | T11 |
| 6 | SB16 | T1 |
| 7 | SB102 | T4 |
| 8 | SB23 | T7 |
| 9 | SB102 | T2 |
| 10 | SB09 | T6 |
| 11 | SB19 | T2 |
| 12 | SB06 | T7 |
| 13 | SB09 | T3 |
| 14 | SB37 | T12 |
| 15 | SB15 | T2 |
| 16 | SB09 | T5 |
| 17 | SB105 | T3 |



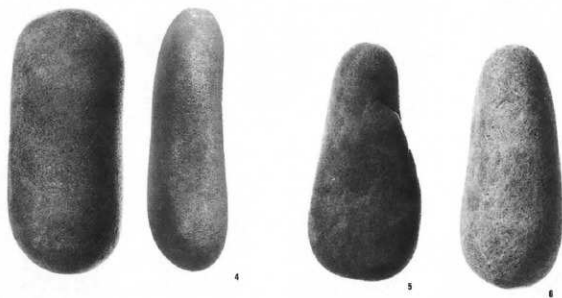


- | | | |
|----|-------|------|
| 1 | SB12 | T 2 |
| 2 | SB17 | T 4 |
| 3 | SB15 | T 1 |
| 4 | SB03 | T 1 |
| 5 | SB14 | T 5 |
| 6 | SB20 | T 4 |
| 7 | SB06 | T 3 |
| 8 | SB106 | T 2 |
| 9 | SB102 | T 1 |
| 10 | SB02 | T 1 |
| 11 | SB07 | T 2 |
| 12 | SB20 | T 1 |
| 13 | SB17 | T 3 |
| 14 | SB12 | T 3 |
| 15 | SB09 | T 4 |
| 16 | SB40 | T 17 |

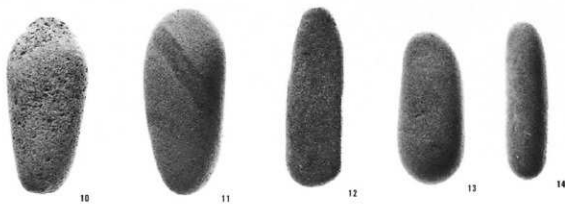
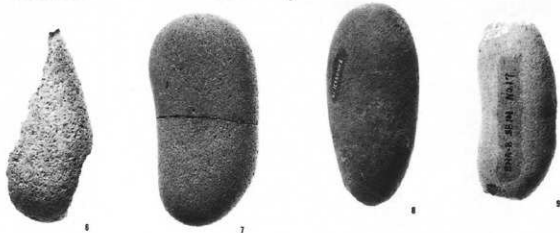
- 1 SB103 T1
- 2 SB19 T1
- 3 SB17 T6
- 4 SB22 T3
- 5 SB38 T1
- 6 IVEQグリッフ
- 7 SB40 T12
- 8 SB23 T5
- 9 SB16 T2
- 10 SB25 T3
- 11 IVEKグリッフ
- 12 SB06 T6
- 13 SB25 T4
- 14 SB101 T2
- 15 SB18 T1
- 16 SB06 T4
- 17 SB24 T4
- 18 SB24 T12
- 19 IVEQグリッフ
- 20 SB34 T9
- 21 SB25 T2
- 22 SB24 T8
- 23 SB40 T18
- 24 IIIEAグリッフ
- 25 SB07 T5



- | | | |
|----|-------|-----|
| 1 | SB41 | T 1 |
| 2 | SB105 | T 2 |
| 3 | SB17 | T 5 |
| 4 | SB24 | T 3 |
| 5 | SB23 | T 4 |
| 6 | SB22 | T 2 |
| 7 | SB13 | T 2 |
| 8 | SB09 | T 2 |
| 9 | SB12 | T 1 |
| 10 | SB102 | T 3 |



- | | | |
|----|-------|------|
| 1 | SB09 | T 1 |
| 2 | SB33 | T 8 |
| 3 | SB01 | T 10 |
| 4 | SB01 | T 1 |
| 5 | SB40 | T 13 |
| 6 | SB06 | T 9 |
| 7 | SB14 | T 3 |
| 8 | SB26 | T 5 |
| 9 | SB101 | T 1 |
| 10 | SB03 | T 2 |
| 11 | SB22 | T 1 |
| 12 | SB24 | T 10 |
| 13 | SB21 | T 1 |
| 14 | SB105 | T 4 |



- 1 IVEQグリッド
- 2 SB03 T3
- 3 SB24 T5
- 4 SB14 T1
- 5 SB20 T3
- 6 SB10 T2
- 7 SB17 T7
- 8 SB01 T9
- 9 SB01 T7



1



2



3



4



5



6



7

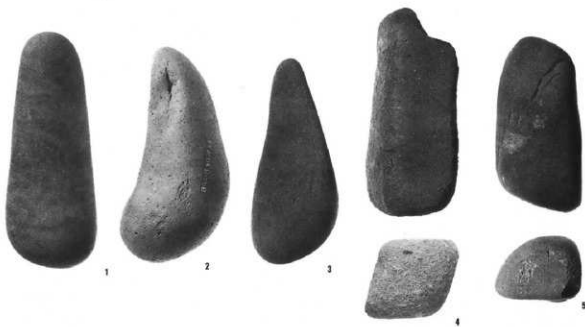


8



9

- 1 SB10 T1
- 2 SB09 T7
- 3 SB06 T2
- 4 SK19
- 5 SB06 T1 (1:3)
- 6 SB42 T1
- 7 SB24 T6
- 8 SB01 T8 (1:4)



- 1 SB33 T3
- 2 IVEKMグリッド
- 3 SB37 T9
- 4 SB40 T15
- 5 SB40 T16
- 6 IVEKMグリッド
- 7 SB40 T14
- 8 SB05 T8
- 9 SB08 T2
- 10 SB105 T5
- 11 SB36 T1
- 12 SB105 T1
- 13 遺構外地点不明



11

13

- 1 SB21 T3
- 2 SK85
- 3 SB05 T1
- 4 IVECMグリッド
- 5 SK85
- 6 SB01 T12
- 7 SB37 T13



- 1 SD08 T 1
- 2 SB24 T 9
- 3 SB02 T 4
- 4 SB24 T 7
- 5 SB02 T 3
- 6 SB06 T 5
- 7 SB15 T 3
- 8 SB25 T 1
- 9 SB12 T 6



1



2



3



4



5



6



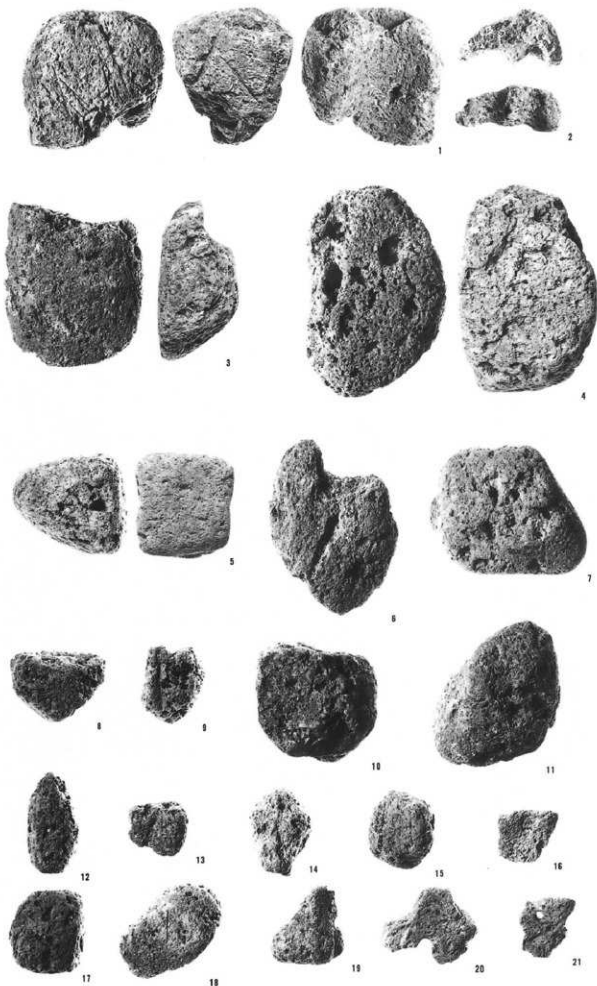
7



8

9

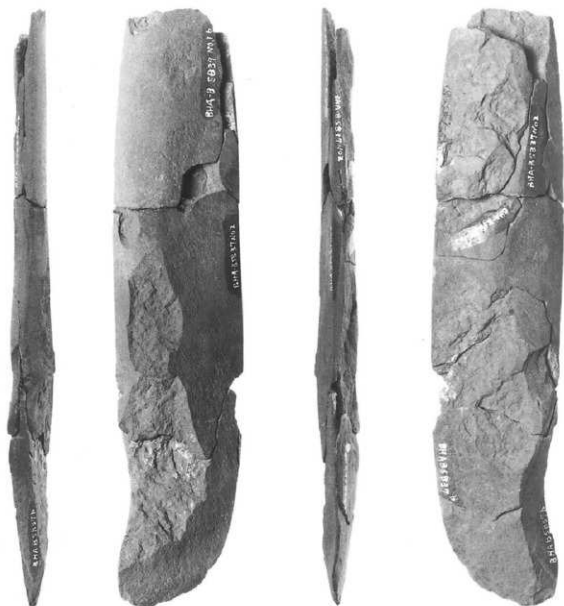
- 1 SB23 T1
- 2 SB16 T4
- 3 SB17 T1
- 4 SB04 T1
- 5 SB21 T2
- 6 IVEKMグリッド
- 7 SB21 T4
- 8 SB01 T7
- 9 SB17 T2
- 10 SB38 T4
- 11 SB34 T7
- 12 SB38 T3
- 13 SB34 T11
- 14 SB21 T5
- 15 SB21 T6
- 16 SB15 T4
- 17 SB04 T2
- 18 SB103 T2
- 19 SE05 T10
- 20 遺構外地点不明
- 21 SE05 T9



- | | | |
|----|-------|------|
| 1 | SB05 | T 4 |
| 2 | SB26 | T 6 |
| 3 | SB11 | T 1 |
| 4 | SB20 | T 5 |
| 5 | SB16 | T 3 |
| 6 | SB12 | T 4 |
| 7 | SB23 | T 6 |
| 8 | SB12 | T 5 |
| 9 | III区A | グリッド |
| 10 | SB36 | T 2 |
| 11 | III区A | グリッド |
| 12 | SB34 | T 8 |
| 13 | SB08 | T 4 |

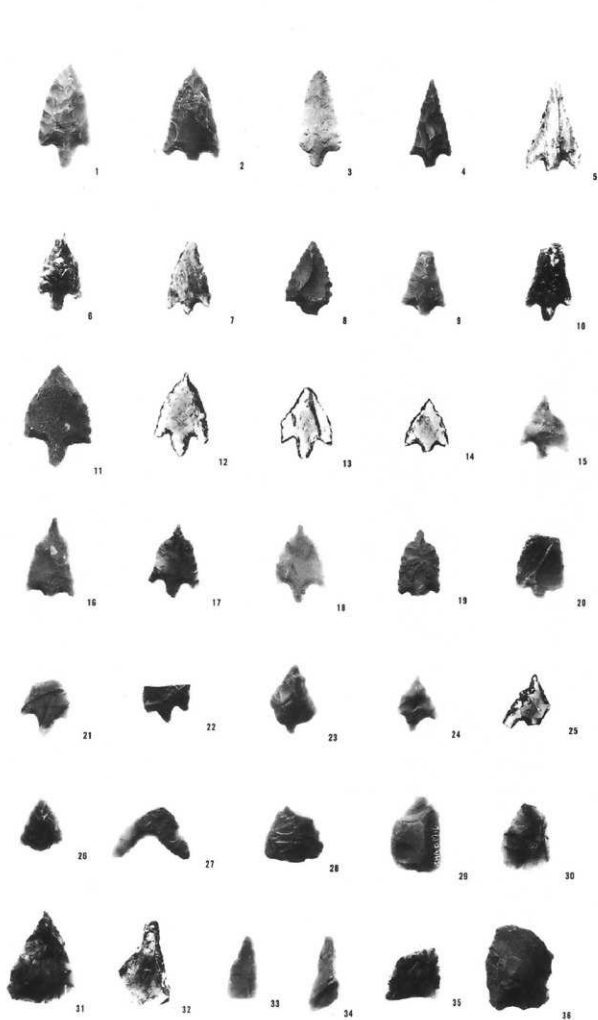


- 1 SB37 T1 (1:1)
2 SB01 T4 (1:1)



1

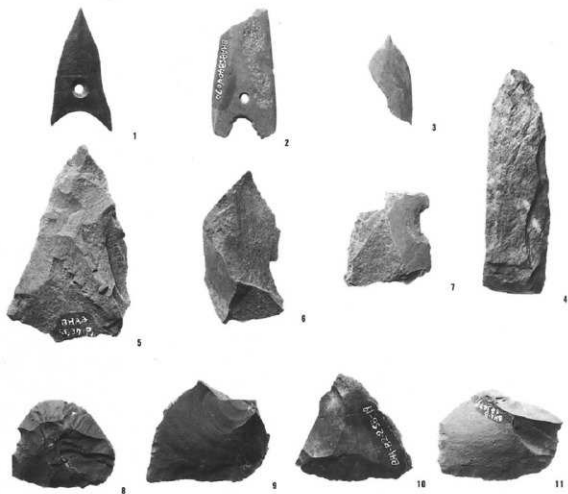
2



- 1 SB19
- 2 SB40
- 3 IV区道橋外
- 4 IV区Mグリッド
- 5 IV区道橋外
- 6 SB02
- 7 SK156
- 8 SB32
- 9 SB17
- 10 SD06
- 11 SB40 T 4
- 12 SB33 T13
- 13 SB12
- 14 IV区道橋外
- 15 SM06
- 16 SB40
- 17 SB37
- 18 SB37
- 19 SB10
- 20 III区Aグリッド
- 21 IV区道橋外
- 22 SB39
- 23 SB34 T13
- 24 IV区道橋外
- 25 IV区道橋外
- 26 SB35
- 27 SB21
- 28 SB40 T 6
- 29 IV区道橋外
- 30 SB13 T 1
- 31 SB37
- 32 SB17
- 33 SB05
- 34 IV区道橋外
- 35 SB08
- 36 III区Aグリッド

- 1 SB20 T12
- 2 SB40 T6
- 3 SM01
- 4 SB05
- 5 SB37
- 6 SB37
- 7 IVEKグリッド
- 8 III区Aグリッド
- 9 SK85 T4
- 10 SB19
- 11 SB34

(1:1)



- 1 SB01 鉄斧
- 2 SB108 鉄片
- 3 SB14 銅鋼
- 4 SB16 銅鋼
- 5 SB16 銅鋼
- 6 SB14 銅鋼
- 7 SB42 銅鋼

(1:1)

