

## 磨石・凹石・敲石

1. VP5-41
2. NY15-17
3. NY18-53
4. VL16-36
5. NY8-1
6. VP9-30
7. VG20-10
8. VU3-23
9. VK10-47
10. VU21-53
11. VL10-27



1



3



2



7



4



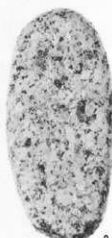
5



6



8



9



11



10

台石

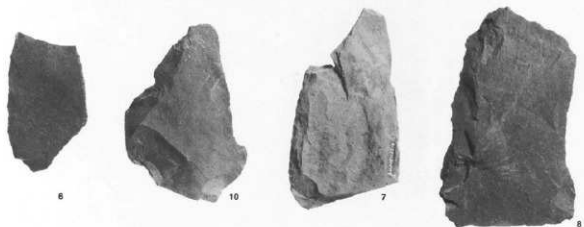
1. IVY13-54

2. VU4-21



## 刃器

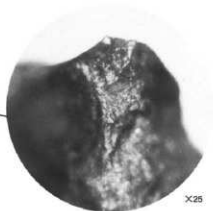
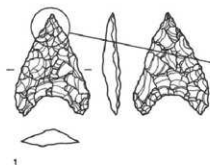
1. VK20-37
2. NY19-53
3. NT20-49
4. IIIA1-5
5. VK20-43
6. VPI2-33
7. SK3123
8. NY14-17
9. NT23-47
10. VI4-22
11. NT24-2
12. NY20-38
13. NY25-25
14. NY25-25



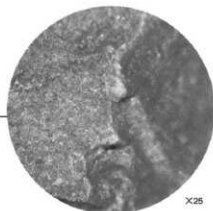
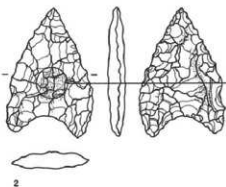
使用痕写真1

石鏃

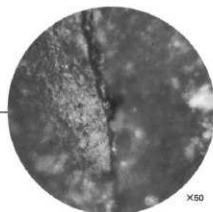
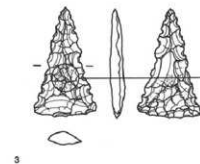
1. VK25-43  
 図版363-4  
 PL132-4  
 (先端部損傷)



2. IVT24-45  
 図版363-10  
 PL132-10  
 (基部摩耗痕)

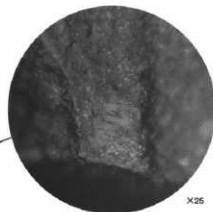
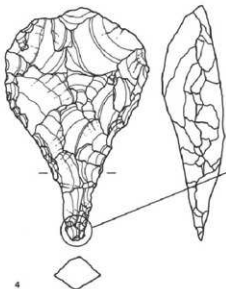


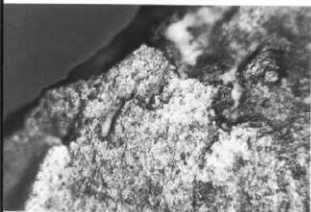
3. IVY20-1  
 図版363-3  
 PL132-3  
 (基部摩耗痕)



石錐

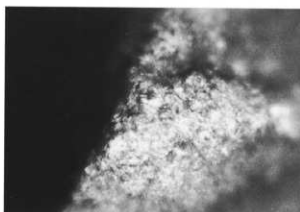
4. SK3001  
 図版363-15  
 PL132-15  
 (先端部摩耗痕)





1

X25



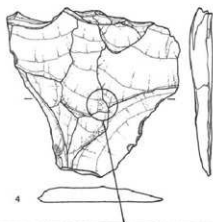
2

X50

## 使用痕写真 2

## 小形刃器

1. V U19-12  
(刃部使用痕)
2. N T24-50  
(刃部使用痕)



4

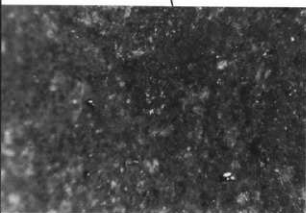


3

X25

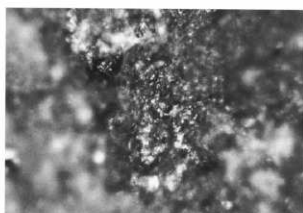
## 大形刃器2B類

3. V P12-33  
図版368-6  
PL.136-6  
(刃部使用痕)



4a

X12.5

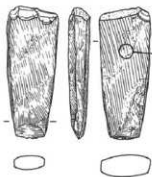


4b

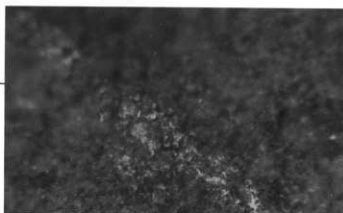
X25

## 大形刃器1A類

4. N T24-2  
図版369-11  
PL.136-11  
(刃部摩耗痕)



5



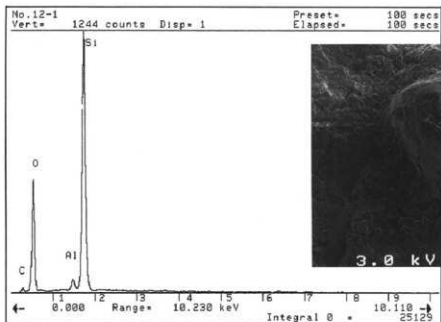
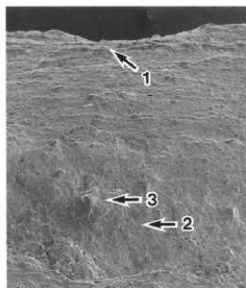
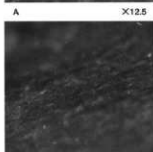
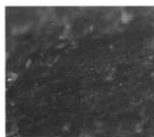
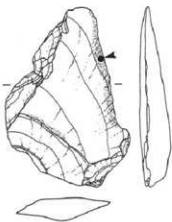
5a

X25

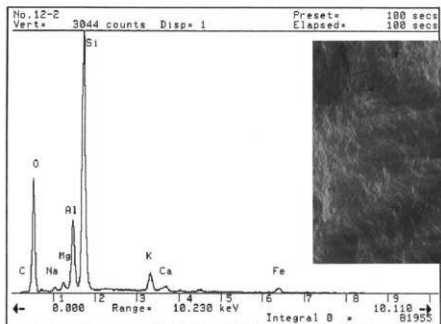
## 磨製石斧

5. V U21-53  
図版363-16  
PL.132-16  
(基部装着痕)

使用痕写真 3  
 大形刃器1B類  
 VL4-22  
 図版369-10  
 PL136-10  
 (摩耗痕)

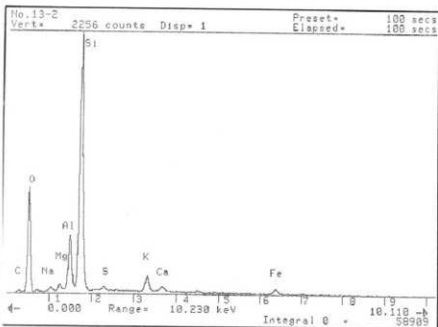
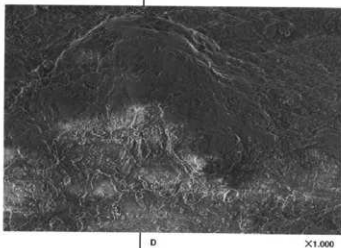
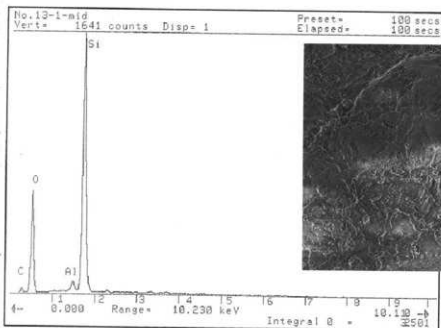
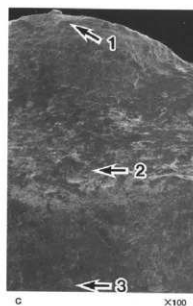
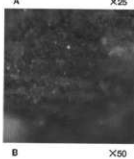
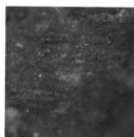
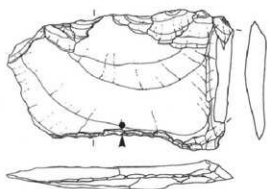


刃部 (C-3) EDX分析チャート



中央部 EDX分析チャート

使用痕写真4  
大形刃器2B類  
NY14-17  
図版368-8  
PL136-8  
(厚耗痕)



使用痕写真5

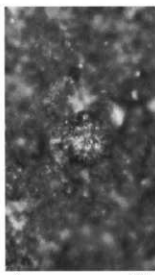
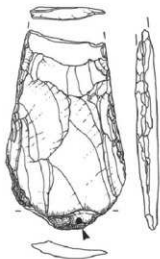
打製石斧

VP8-16

図版364-3

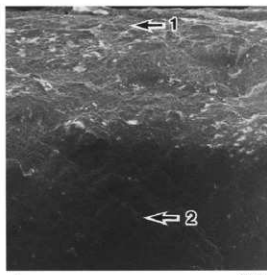
PL133-3

(厚牝痕)



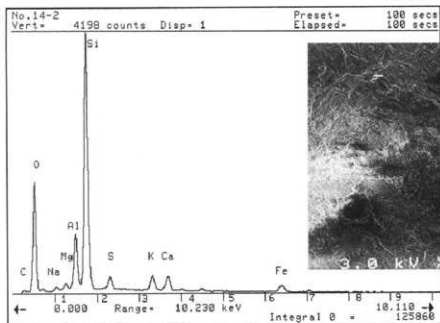
A

X25

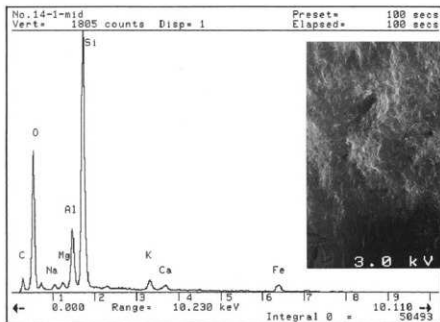


B

X100



刃部 (B-2) EDX分析チャート



基部 EDX分析チャート



勸長野県埋蔵文化財センター発掘調査報告書 27

上信越自動車道埋蔵文化財発掘調査報告書 4

—長野市内 その2—

**松原遺跡**

**縄文時代**

発行 平成10年3月27日発行  
発行者 日本道路公団名古屋建設局  
長野県教育委員会  
勸長野県埋蔵文化財センター  
印刷 カシヨ株式会社

