

磨石・凹石・敲石

1. VP5-41
2. NY15-17
3. NY18-53
4. VL16-36
5. NY8-1
6. VP9-30
7. VG20-10
8. VU3-23
9. VK10-47
10. VU21-53
11. VL10-27



1



3



2



7



4



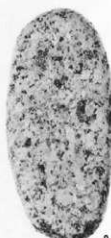
5



6



8



9



11



10

台石

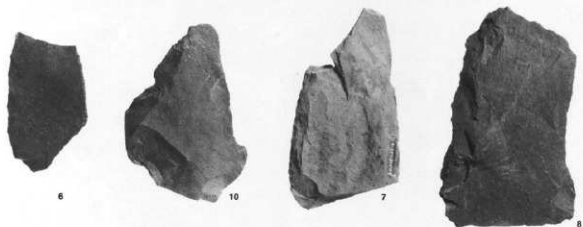
1. IVY13-54

2. VU4-21



刃器

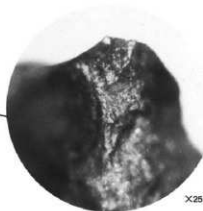
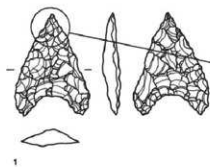
1. VK20-37
2. NY19-53
3. NT20-49
4. IIIA1-5
5. VK20-43
6. VP12-33
7. SK3123
8. NY14-17
9. NT23-47
10. VI4-22
11. NT24-2
12. NY20-38
13. NY25-25
14. NY25-25



使用痕写真1

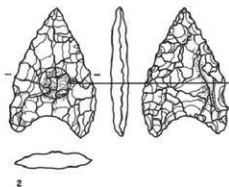
石鏃

1. VK25-43
 図版363-4
 PL132-4
 (先端部損傷)



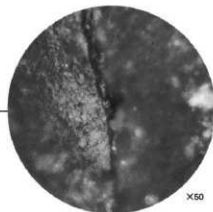
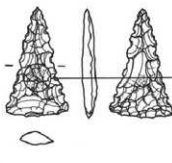
X25

2. NT24-45
 図版363-10
 PL132-10
 (基部摩耗痕)



X25

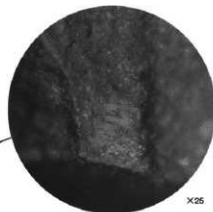
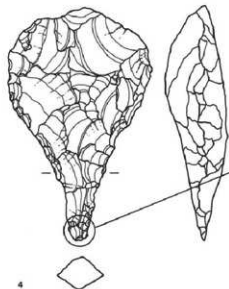
3. IVY20-1
 図版363-3
 PL132-3
 (基部摩耗痕)



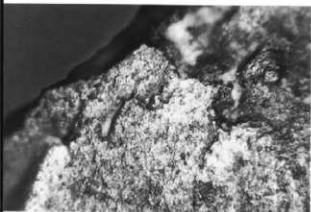
X50

石鏃

4. SK3001
 図版363-15
 PL132-15
 (先端部摩耗痕)

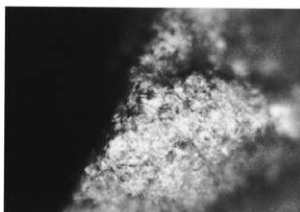


X25



1

X25



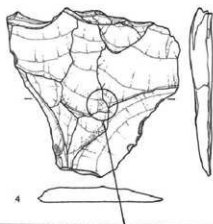
2

X50

使用痕写真 2

小形刃器

1. V U19-12
(刃部使用痕)
2. N T24-50
(刃部使用痕)



4

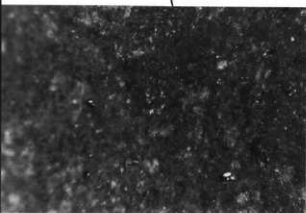


3

X25

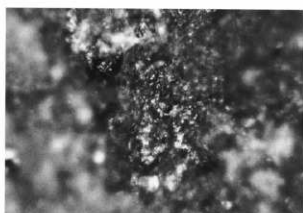
大形刃器2B類

3. V P12-33
図版368-6
PL136-6
(刃部使用痕)



4a

X12.5

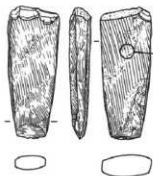


4b

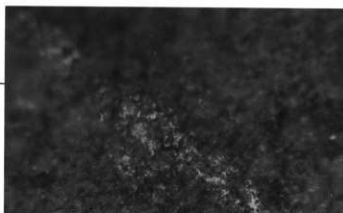
X25

大形刃器1A類

4. N T24-2
図版369-11
PL136-11
(刃部摩耗痕)



5



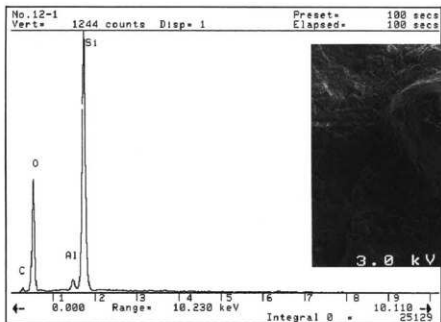
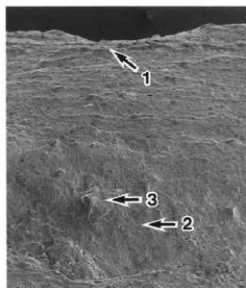
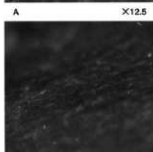
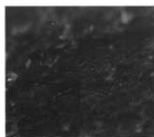
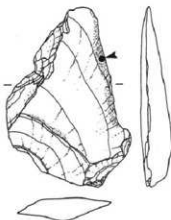
5a

X25

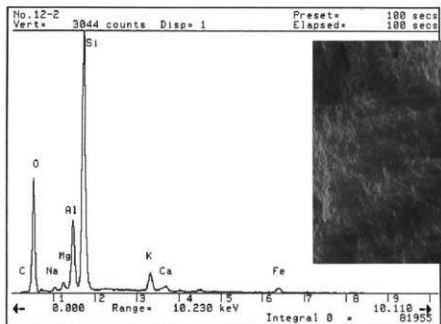
磨製石斧

5. V U21-53
図版363-16
PL132-16
(基部装着痕)

使用痕写真3
大形刃器1B類
VLA-22
図版369-10
PL136-10
(摩耗痕)

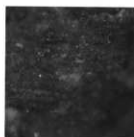
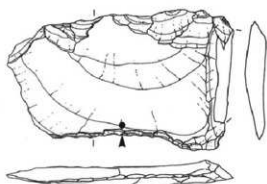


刃部 (C-3) EDX分析チャート

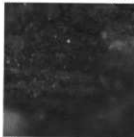


中央部 EDX分析チャート

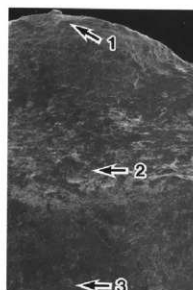
使用復写真 4
 大形刃器2B類
 IVY14-17
 図版368-8
 PL136-8
 (厚耗痕)



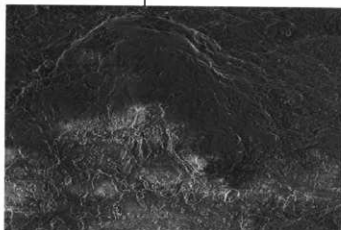
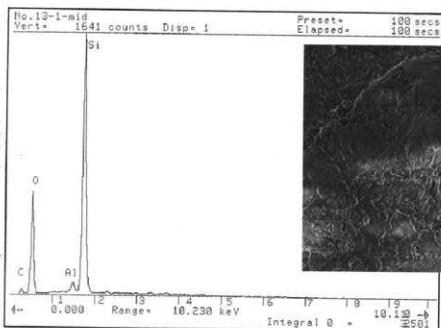
A X25



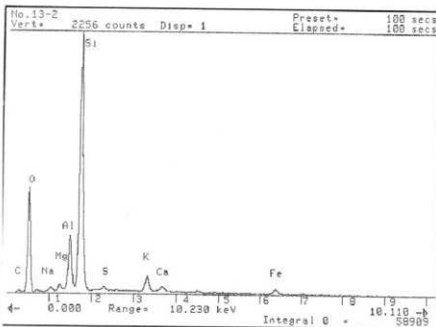
B X50



C X100



D X1,000



使用痕写真5

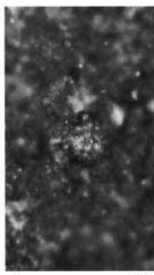
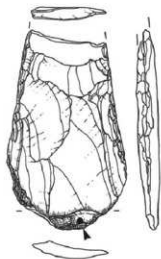
打製石斧

VP8-16

図版364-3

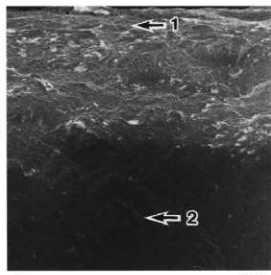
PL133-3

(摩耗痕)



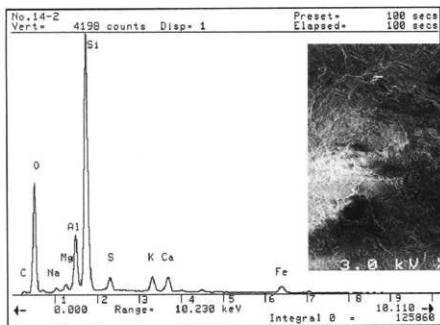
A

X25

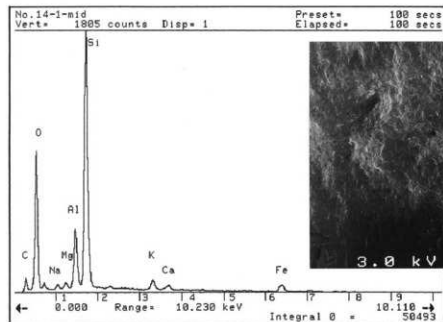


B

X100



刃部 (B-2) EDX分析チャート



基部 EDX分析チャート

勸長野県埋蔵文化財センター発掘調査報告書 27

上信越自動車道埋蔵文化財発掘調査報告書 4

—長野市内 その2—

松原遺跡

縄文時代

発行 平成10年3月27日発行
発行者 日本道路公団名古屋建設局
長野県教育委員会
勸長野県埋蔵文化財センター
印刷 カシヨ株式会社

