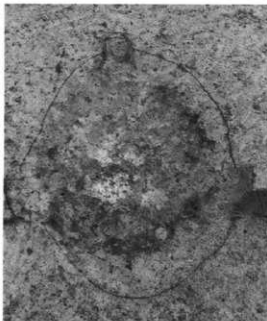
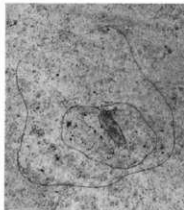
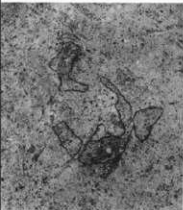


左：SF3020

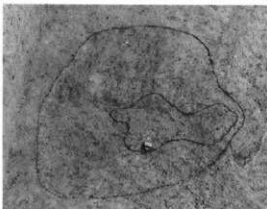
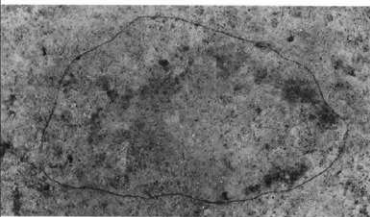
右：SF3115



左：SF1009

中：SF3065

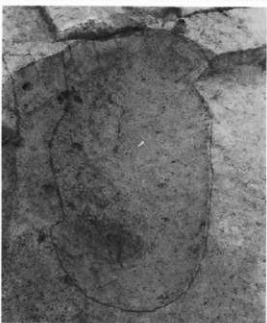
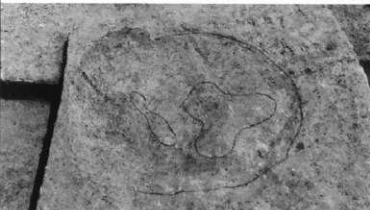
右：SF3057



左上：SF3028

左下：SF3103

右：SF3119

左：SF3129遺物出土状況  
(SB3028の跡となる)

右：SF3136



③-1区  
遺物出土状況



③-2区  
遺物出土状況



左：SQ3025  
右：同部分





左：SQ3014

右：SQ3028



左：SQ3033

右：SQ3038



左：SQ3039部分

右：SQ3040部分  
(SB3027覆土中)

左：SQ3042部分

右：SQ3063

左：「の」の字状垂飾品  
出土状況

右：石核出土状況

左：SK3100

右：SK3137

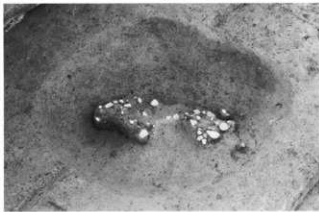
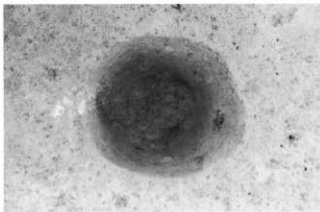
遺物出土状況



左：SK3155

右：SK3159

遺物出土状況

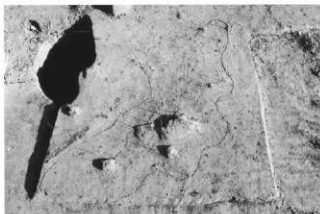


左：SK3195

遺物出土状況

右：SK3206

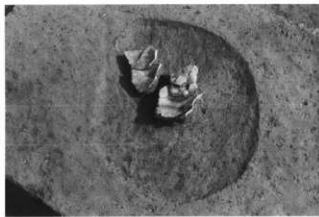
遺物出土状況



左：SK3215

右：SK3216

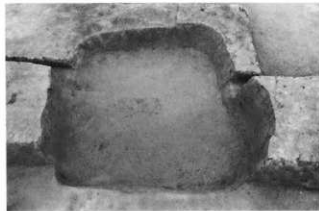
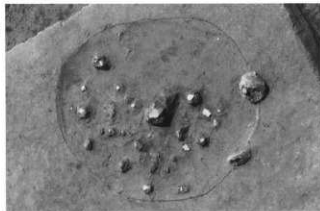
遺物出土状況



左：SK3221

遺物出土状況

右：SK3236





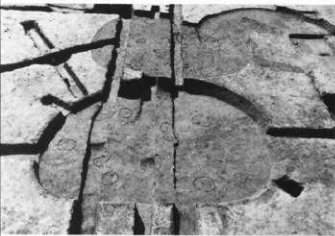
左：SB3001.3002

右：SB3003



左：SB3004

右：SB3008



左：SB3005

右：SB3012



左：ST3004～3007

右：SB3002～3003



左：ST3010

右：調査風景

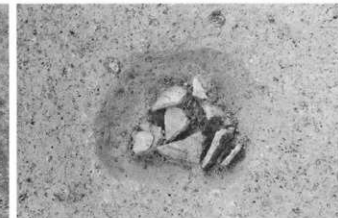
左：SF3001

右：SF3017



左：SF3009

右：SK3091



左：SK3001

右：SK3067



左：SK3033

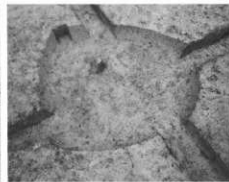
右：SQ3061

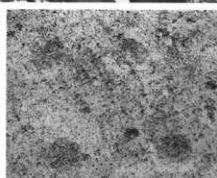


左：SK3002

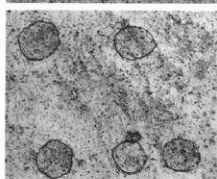
中：SK3040

右：SK3101





左上：杭列状遺構B列  
 左下：同 I列  
 中上：同 G列  
 中下：同 H列  
 右上：VP3区杭列  
 検出状況  
 右中：同上  
 右下：VI21区P13,14  
 断面



SB3016 (6~8)  
 SB8001 (9・10)  
 SB8002 (11・189)  
 SK8015 (12・13)



SF8006 (14)  
 SF8010 (15)  
 SF8011 (16)  
 SF8018 (17・18)  
 SF8024 (19)



SF8038 (21-24)

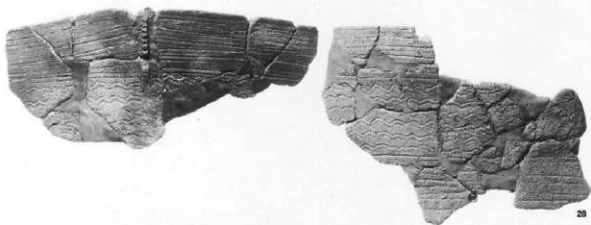


22

23

24





SQ8003 (29)



SQ8004 (30)  
SQ8005 (31)



SK8049 (35)



SK8023 (33)

SK8014 (36)

SK8020 (37)

SK8021 (39)

SK8024 (41・42)



SK8036 (65)



SK8053 (45~47)



45



47

46

SK8054 (52・55)



52

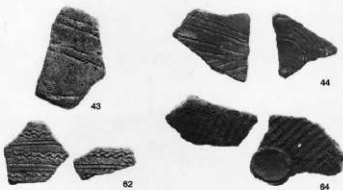
SK8050 (43・44)

SK8060 (62)

SK8061 (64)



55



43

44

62

64

SK8059 (56~60)



56

57

58

59

60

第 I 群土器



1



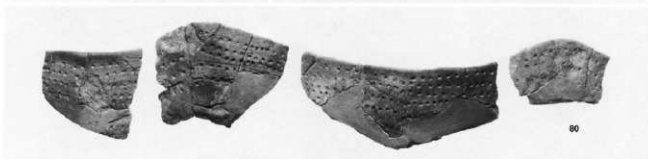
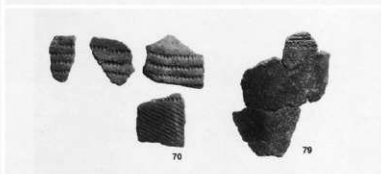
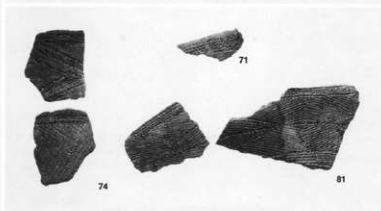
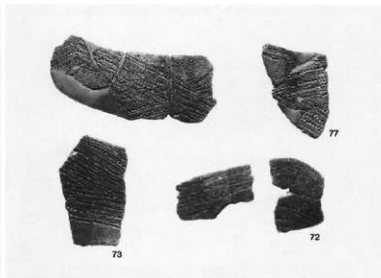
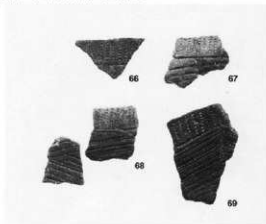
2

3

4

5

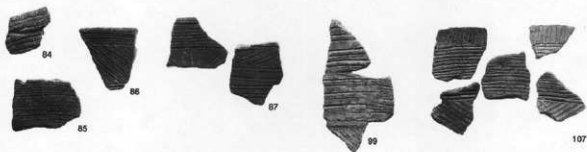
第Ⅱ群土器



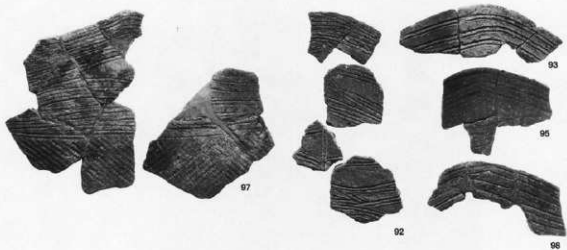




103



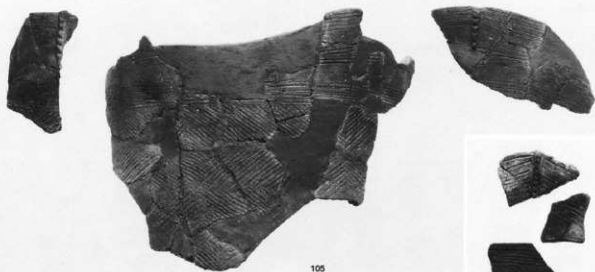
107



93

95

96



105

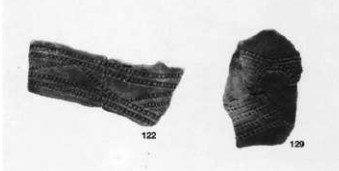
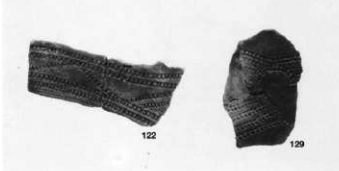
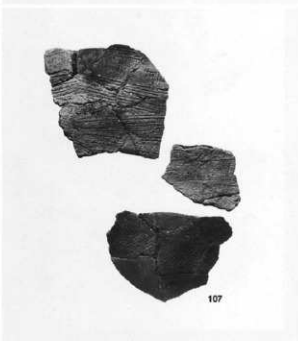
106



91



89













145



141



142



144



143



136



146



147



190



148



149



150



131



139



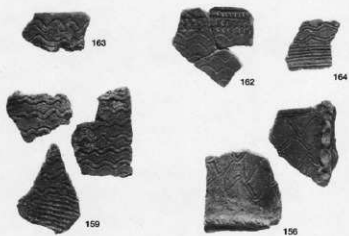
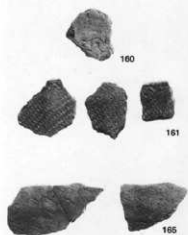
151



140



137



第Ⅲ群土器  
(178・179はⅣ群)



第Ⅳ群土器



SB1165

(2・3を含む)

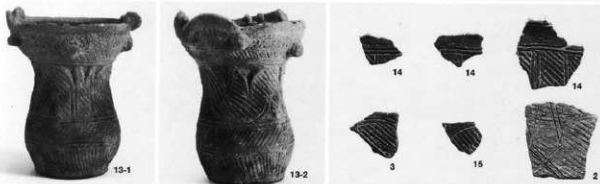


SB1166

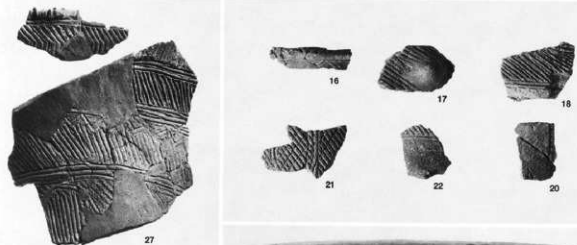


SB1167

(2・3を除く)



SB1173



SB3009



36



37



38

40



39

34

35

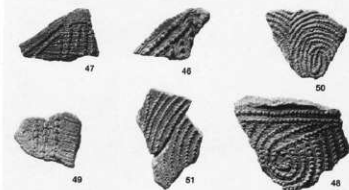
36

SB3010



54







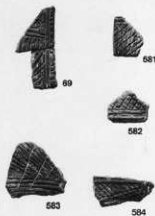
SB3013



67



71



69

681

682

683

684

SB3014



74



75



76



77



78

SB3015



79



80



81



82



83



84



86



87

SB3017



88



93



91



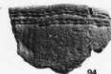
92



89



90

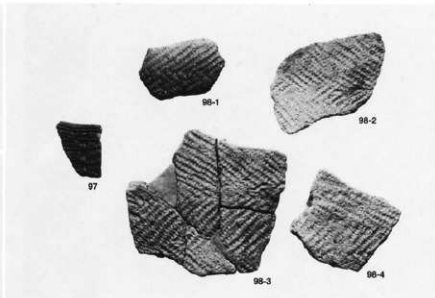


94

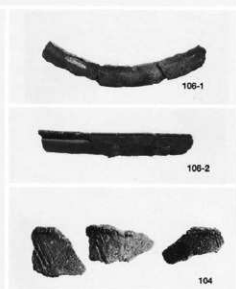
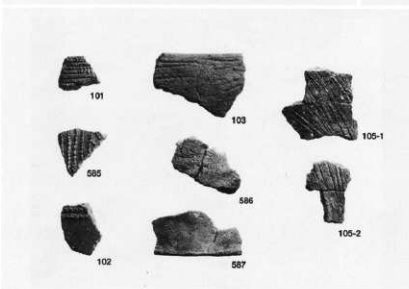


95

SB3018



SB3019





109



110



111

508



112



113



114



115

115



116



509



500



117



501



502



119

120

121



122

123



124



125



593



126



127

127



128



129



130



131



132

左：SB3022

右：SB3023

左：SB3024

右：SB3025



136

134

138

137

133-1



141

139

140

142

594

SB3026

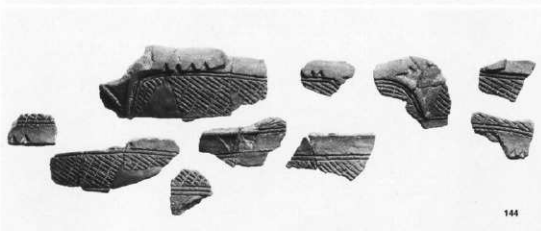


133-2

SB3027



145



144

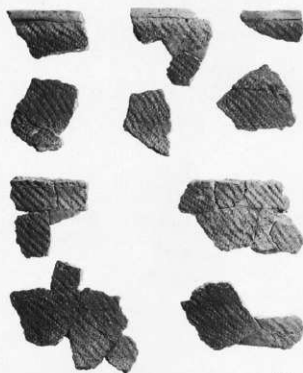
595

596

SB3028



140-1



148



146-2



149

597



600-1



150

598

599

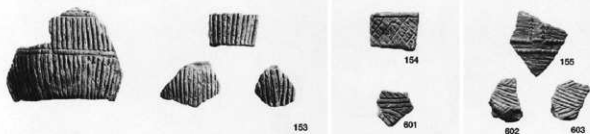


600-2

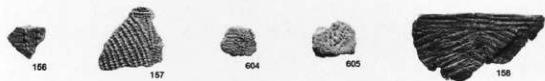


147

SB3029



SB3030

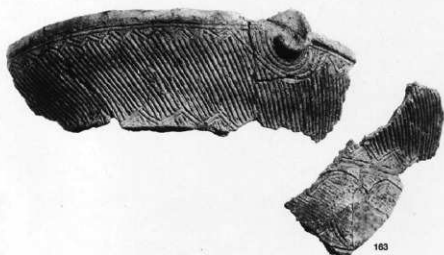


SF1002 (606・607)

SF1006 (608～610)

SF1007 (162)

SF3033



SF3036

(164・611・612)

SF3049 (613)

SF3052 (614)

SF3053 (615)



164



611



612



613



614



615

SF3043 (167)

SF3044 (166)



167



166

SF3084 (616)

SF3098 (617・618)

SF3114 (168・619)

SF3133 (620)

SF3136 (169)



616



617



618



168



619



620



169

SQ3002 (170・621)

SQ3003

(171・172・622)



621



170



170



171



172



622

SQ3011

(173・623・624)

SQ3012 (174-177)



623



624



174



175



176



177



SQ3018 (179)

SQ3023 (180)



179



180

SQ3022



181-1

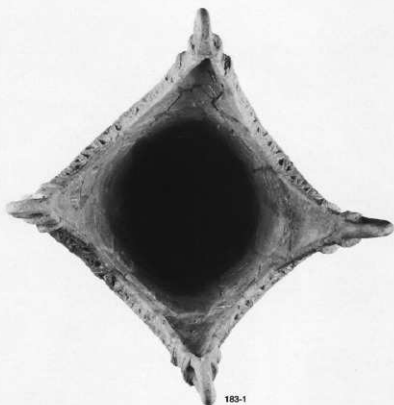


181-2

SQ3024



182





104-1



104-2



105



108



109



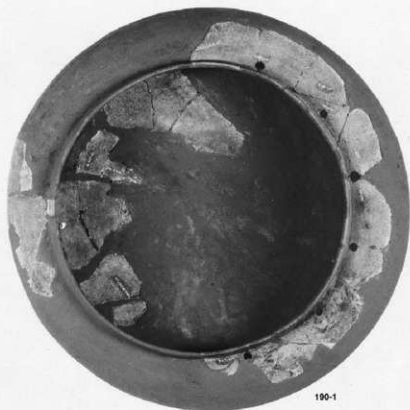
107-1



106



107-2



SQ3032 (191)  
SQ3041 (197)  
SQ3042 (202)  
SQ3039 (196)





192



205



204

SQ3038 (193~195)



193



196



194

SK3137



215



217

SK3137



216-1



216-2

SK3214 (218・219)

SK3215 (220・221)

SK3217 (223)

SK3225 (226)

SK3241 (227)

SK3244 (228・229)

SK8051 (232)



221



220



226



223



227



228



229



232



218



219

SK3216 (222)

SK3221 (225)



222



225



224



230

SK3219 (224)

SK3244 (230)

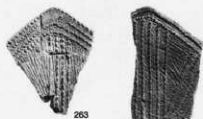
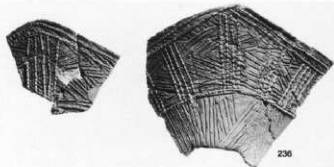


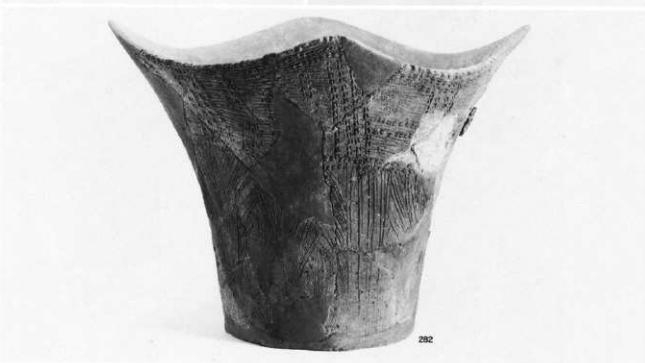
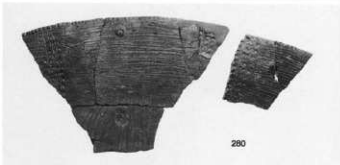
231

SK3244











284



294



285



292



306



307







330-1



330-2



332



329



330



338



345



344



348



349



374

373

372



370



375



363



356



355



364



371



362



351



353

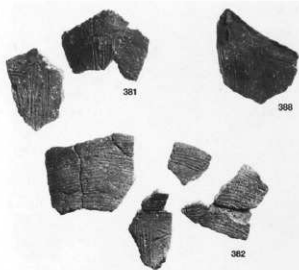


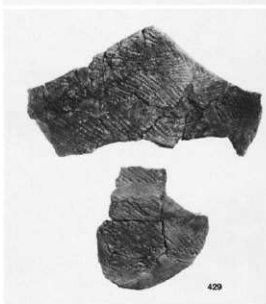
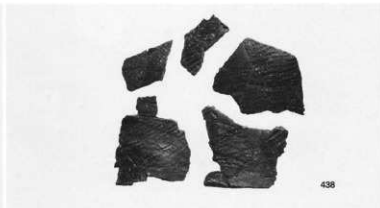
350



376











456-1



467



468



465-2



466



469



471



472



463

第VI群土器  
(15213SB3028出土)



475



152

476



478



460



466



465



476



467



477



468-1



468-2



463



461



464-1



462



464-2



464-3



464-4





497



496



510



498



490



499



500



493



512



501



508



503



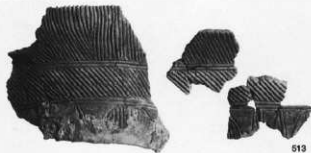
505



511



第Ⅷ群土器  
(209・2SQ3063出土)



513



516



519



514



530



517



516



515



209





520



522



521



529



523



526



525



524



531



532



538



542



543



535



559



546



547



548



549



550



551



552



555



553



562



563



565



561



560



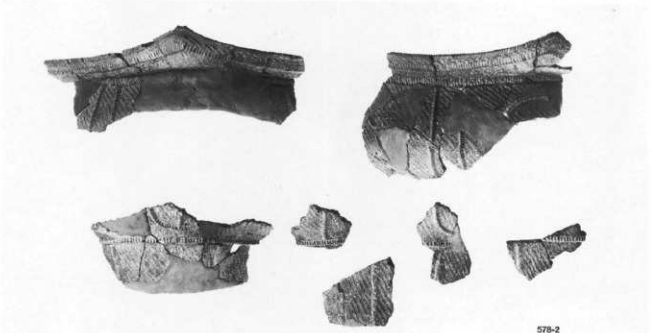
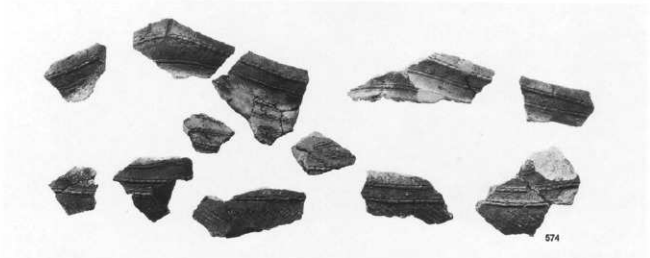
528

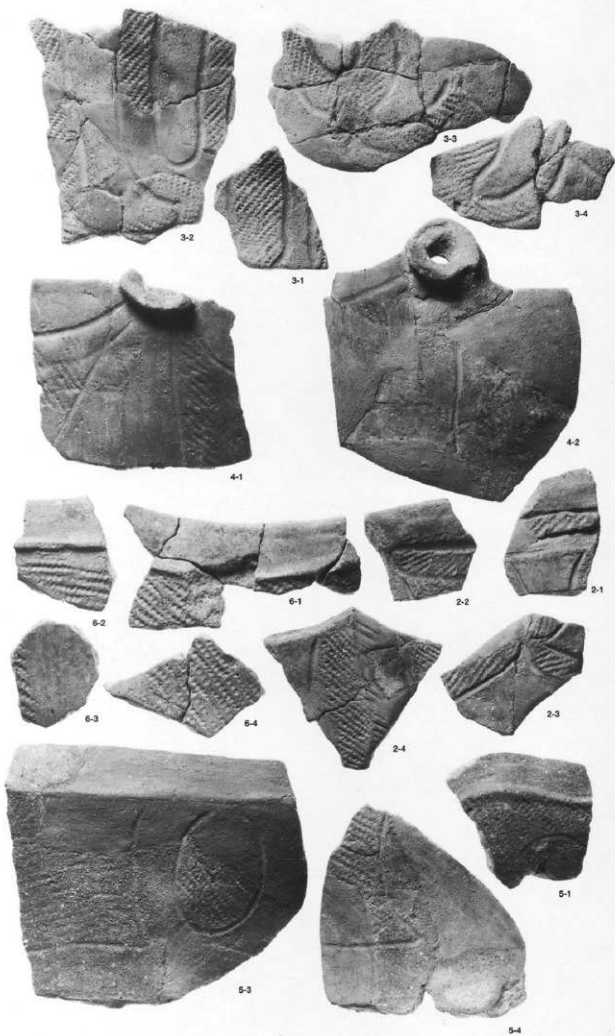


507



506



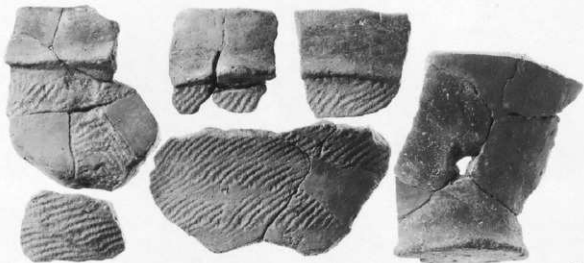


SB3001 (1)

SB3003 (9)



SB3002



SB3004

