

- 6 包含層-23
- 7 包含層-34
- 8 包含層-41
- 9 包含層-42
- 10 包含層-43
- 11 包含層-72
- 12 包含層-9
- 13 包含層-12
- 14 包含層-47
- 15 包含層-54



他時期混入

- 1 他時期混入-8
- 2 他時期混入-4
- 3 他時期混入-5
- 4 他時期混入-6
- 5 他時期混入-10
- 6 他時期混入-9
- 7 他時期混入-12





SB5401-1



SB5404-1



SB5412a-1



SB7502-1



SB9008-2





SB9009-1



SB9010-1



SB9011-31



SB9011-33

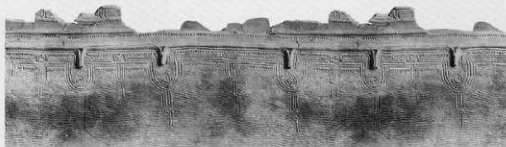


SB9011-35





SB9012-5



SB9012-9



SB9012-16



SB9015-1



SQ7003-6





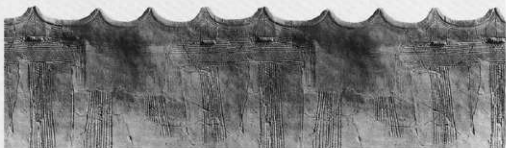
SQ7003-66



SQ7003-83



SQ7003-160



SQ7003-220



SQ7003-226





SQ7003-227



SQ7003-232



SQ7003-240



SQ7003-252



SQ7003-258





SQ7003-341



SQ7003-343



SQ7003-353



SQ7003-362



SQ9004-1



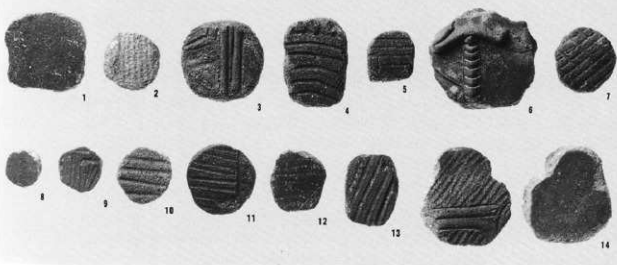
土偶

- 1 SB5408
- 2 SB5408
- 3 SK7670
- 4 SK7670
- 5 SQ7003
- 6 SQ7003
- 7 SQ7003
- 8 SQ7003
- 11 SQ7003
- 13 SQ7003
- 14 包含層
- 15 包含層
- 16 他時期混入
- 17 他時期混入

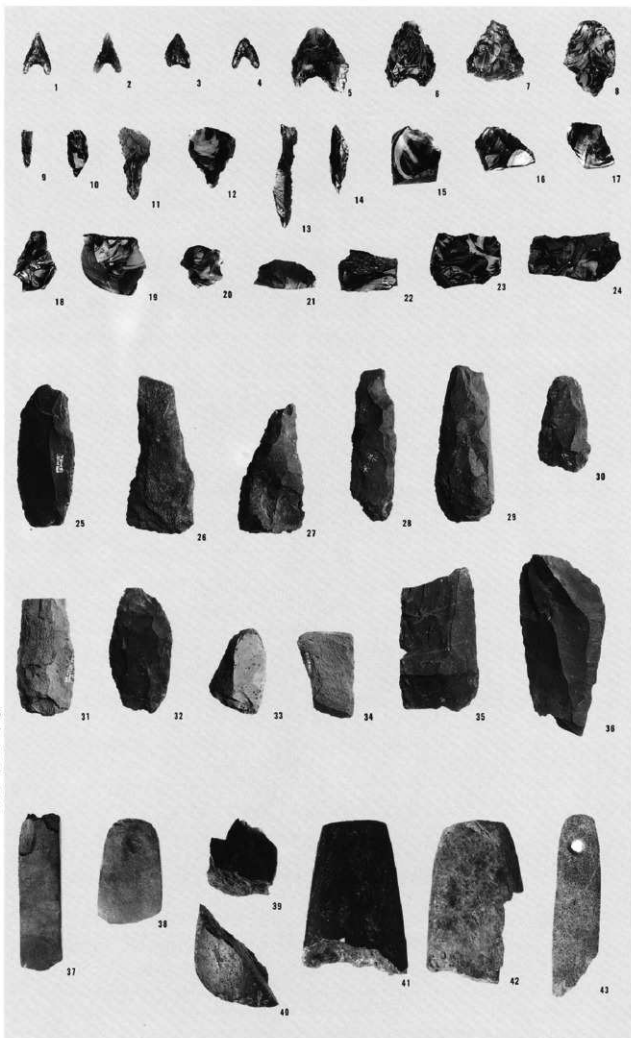


土器片製円盤

- 1 SB5401
- 2 SB5408
- 3 SB9010
- 4 SB9011
- 5 SK7668
- 6 SK7676
- 7 包含層
- 8 包含層
- 9 包含層
- 10 包含層
- 11 包含層
- 12 包含層
- 13 包含層
- 14 包含層



- 1 SQ7003-3
- 2 SQ7003-2
- 3 SQ7003-4
- 4 SQ7003-5
- 5 SQ7003-7
- 6 SQ7003-8
- 7 SQ7003-9
- 8 SQ7003-10
- 9 SB5404-11
- 10 SB7502-12
- 11 SQ7003-14
- 12 SQ7003-15
- 13 SB9009-17
- 14 SQ7003-18
- 15 SB5412-32
- 16 SB5412-33
- 17 SB5412-34
- 18 SB9010-35
- 19 SB9010-36
- 20 SQ7003-37
- 21 SQ7003-38
- 22 SQ7003-39
- 23 SB5412-42
- 24 SB5412-41
- 25 SB9013-19
- 26 SQ7003-21
- 27 SQ7003-20
- 28 SQ7003-22
- 29 SQ7003-23
- 30 SQ7003-25
- 31 SQ7003-24
- 32 SQ7003-26
- 33 SB5402-28
- 34 SB9010-29
- 35 SB5402-31
- 36 SB9014-30
- 37 SQ7003-44
- 38 ㊦ b区包含層-46
- 39 ㊦ a区包含層-47
- 40 ㊦ b区包含層-50
- 41 ㊦ b区包含層-48
- 42 ㊦ a区包含層-45
- 43 ㊦ a区包含層-70



中期前葉の石器

- 44 SQ7003-51
 45 SQ7003-52
 46 SQ7003-55
 47 SQ7003-56
 48 SQ7003-57
 49 SQ7003-58
 50 SB9010-59
 51 SQ7003-60
 52 SQ7003-61
 53 SQ7003-62
 54 SB9010-64
 55 SB9011-65
 56 SB9071-66
 57 SQ7003-68
 58 SQ7003-69
 59 SQ7003-71
 60 SQ7003-72
 61 SQ7003-73
 62 SB9016-74
 63 SB5408-75

中期中葉の土器
XIII-2層

- 1 SB6801-1
 2 SB6801-1

XIII-3層

- 3 包含層-1

XIII - 2 層

- 1 包含層-4
- 2 包含層-6
- 3 包含層-10
- 4 包含層-12
- 5 包含層-13
- 6 包含層-15
- 7 包含層-18
- 8 包含層-19
- 9 包含層-1
- 10 包含層-5
- 11 包含層-7



他時期混入

- 1 他時期混入-1
- 2 他時期混入-3
- 3 他時期混入-2
- 4 他時期混入-5
- 5 他時期混入-6

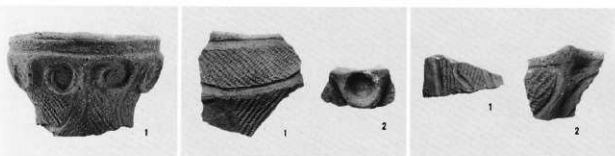
中期中葉の石器
XIII層

- 1 SK7664-1
- 2 SK7664-2
- 3 SK7664-3
- 4 SK7664-4
- 5 SK7664-5
- 6 SK7664-6
- 7 SF9021-8



屋代遺跡群
Ⅱ-2層 土器

左: 1 SB5302-1
中: 1 SB5307-1
2 SB5307-2
右: 1 SB5309-1
2 SB5309-3-1

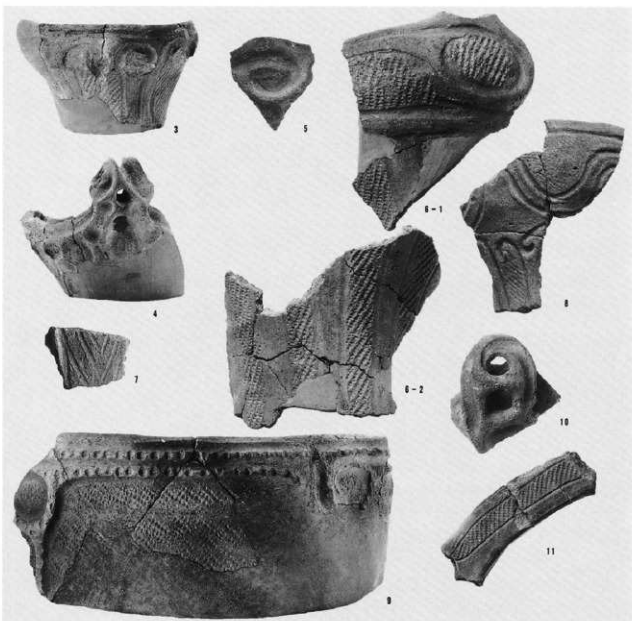


1 SB5310-1
2 SB5310-35-2
3 SB5310-10
4 SB5310-27
5 SB5310-7
*SB5310-35-2は接
合前



1 SB5311-6
2 SB5311-13

- 3 SB5311-15
- 4 SB5311-23
- 5 SB5311-22
- 6-1 SB5311-26-1
- 6-2 SB5311-26-2
- 7 SB5311-27
- 8 SB5311-28
- 9 SB5311-30
- 10 SB5311-32
- 11 SB5311-53



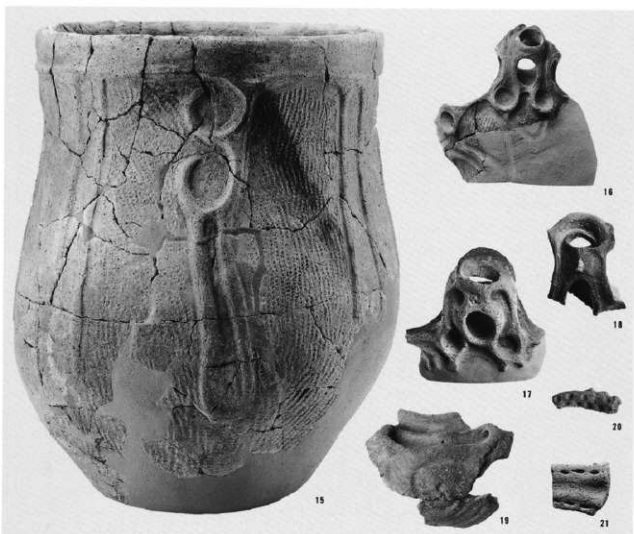
- 1 SB5312-1
- 2 SB5312-11
- 3 SB5312-16
- 4 SB5312-34
- 5-1 SB5312-49-1
- 5-2 SB5312-49-2
- 5-3 SB5312-49-3





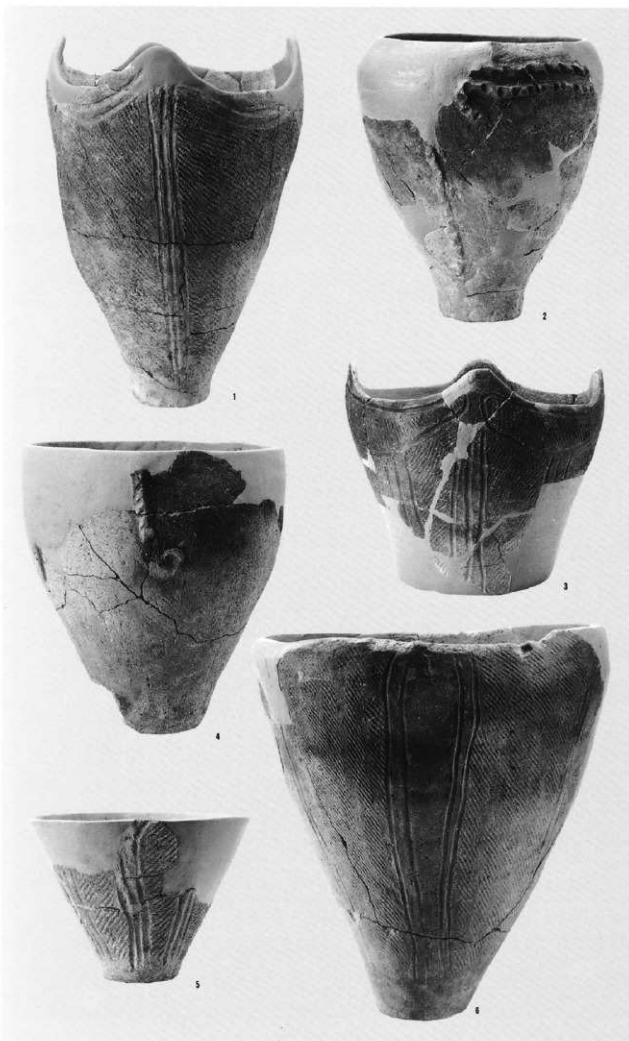
- 1 SB5313a-1
- 2 SB5313a-9
- 3 SB5313a-3
- 4 SB5313a-15
- 5 SB5313a-28
- 6 SB5313b-36
- 7 SB5313a-31
- 8 SB5313b-41
- 9 SB5313b-44
- 10 SB5313a-4
- 11 SB5313a-5
- 12 SB5313a-7
- 13 SB5313a-11
- 14 SB5313b-16

- 15 SB5313a-34
- 16 SB5313b-15
- 17 SB5313b-18
- 18 SB5313a-21
- 19 SB5313a-27
- 20 SB5313a-29
- 21 SB5313a-33



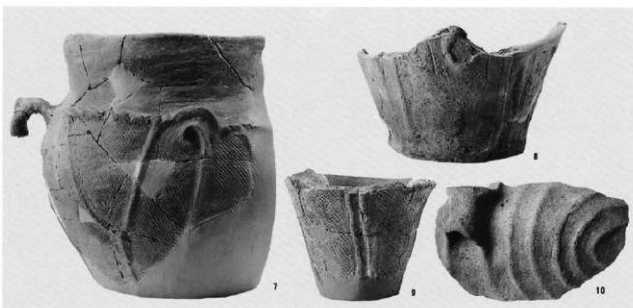
- 1 SB5314-1
- 2 SB5314-3
- 3 SB5314-2
- 4 SB5314-6





- 1 SB5316-1
- 2 SB5316-3
- 3 SB5316-5
- 4 SB5316-6
- 5 SB5316-8
- 6 SB5316-7

- 7 SB5316-9
- 8 SB5316-17
- 9 SB5316-12
- 10 SB5316-18



- 左: 1 SB5317-1
- 右: 1 SB5318-3



- 1 SB5319-1
- 2 SB5319-3





- 3 SB5319-4
- 4 SB5319-7
- 5 SB5319-14
- 6 SB5319-12
- 7 SB5319-15

- 1 SB5321-1
- 2 SB5321-2
- 3 SB5321-8
- 4 SB5321-9



- 1 SB5322-1



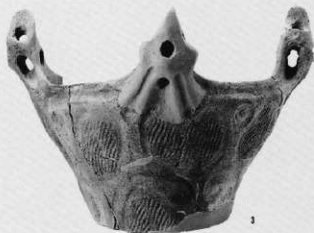
- 1 SB5323-1
- 2 SB5323-2



3 SB5323-4

4 SB5323-8

5 SB5323-10



- 1 SB5324-3
- 2 SB5324-12
- 3 SB5324-15
- 4 SB5324-17
- 5 SB5324-18



6 SB5324-30

1 SB5325-1

2 SB5325-6

3 SB5325-3

4 SB5325-7



5 SB5325-19

6 SB5325-9



1 SB5326-1

1 SB5328-1

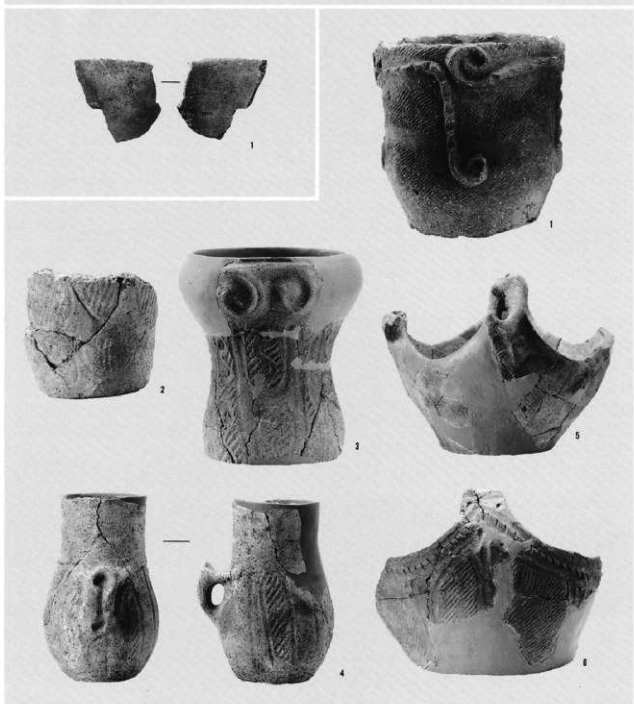
2 SB5328-2

3 SB5328-7

4 SB5328-15

5 SB5328-21

6 SB5328-28





7 SB5328-6

8 SB5328-30

9 SB5328-45

10 SB5328-18

11 SB5328-40

12 SB5328-10

13 SB5328-11

14 SB5328-12

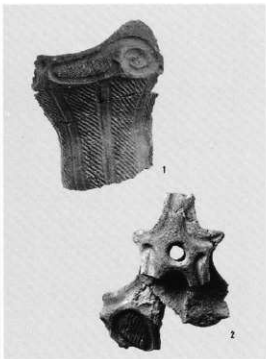
15 SB5328-20

16 SB5328-35

左：17 SB5328-27

右：1 SB5329-3

2 SB5329-2



1 SB5332-5

2 SB5332-6

3 SB5332-7

4 SB5332-16

5 SB5332-24

6 SB5332-52



- 1 SB5335-1
 2 SB5335-6
 3 SB5335-8-1
 8-2



- 1 SB5336-1
 2 SB5336-2
 3 SB5336-6



- 1 SB5337-12
- 2 SB5337-13
- 3 SB5337-14
- 4 SB5337-15
- 5 SB5337-17
- 6 SB5337-18





1



3



4



2



5



6



7



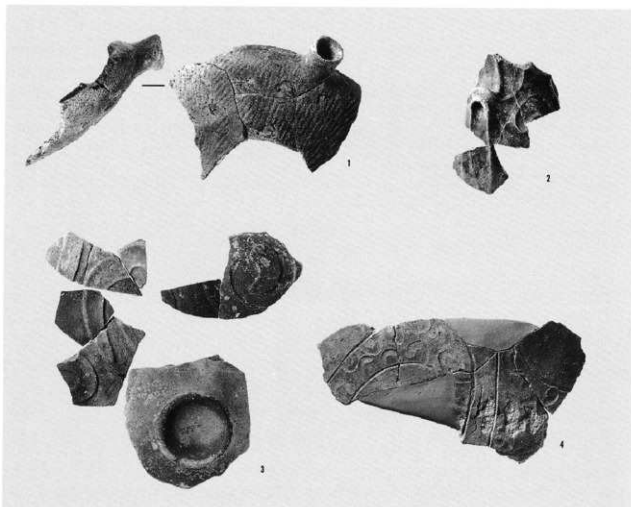
8



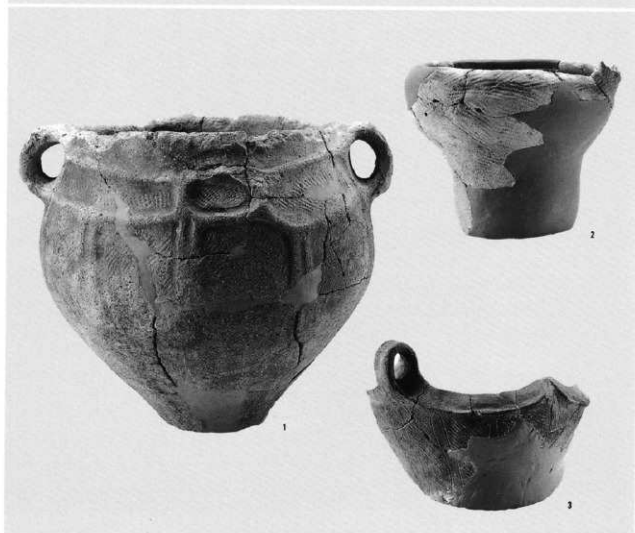
9

- 1 SB5338-1
- 2 SB5338-2
- 3 SB5338-4
- 4 SB5338-6
- 5 SB5338-24
- 6 SB5338-31
- 7 SB5338-46
- 8 SB5338-11
- 9 SB5338-66

- 1 SB5339-1
- 2 SB5339-5
- 3 SB5339-3
- 4 SB5339-17



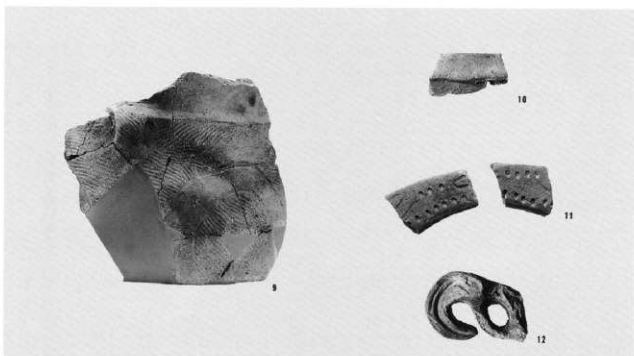
- 1 SB5340-1
- 2 SB5340-9
- 3 SB5340-15



- 4 SB5340-16
- 5 SB5340-21
- 6 SB5340-13
- 7 SB5340-11
- 8 SB5340-36



- 9 SB5340-35
 10 SB5340-39
 11 SB5340-41
 12 SB5340-46



- 1 SB5341-1
 2 SB5341-2
 3 SB5341-3
 4 SB5341-7





5A



6



5B



7



8



9



10



11



12



13

5A-5B SB5341-14

6 SB5341-23

7 SB5341-30

8 SB5341-34

9 SB5341-39

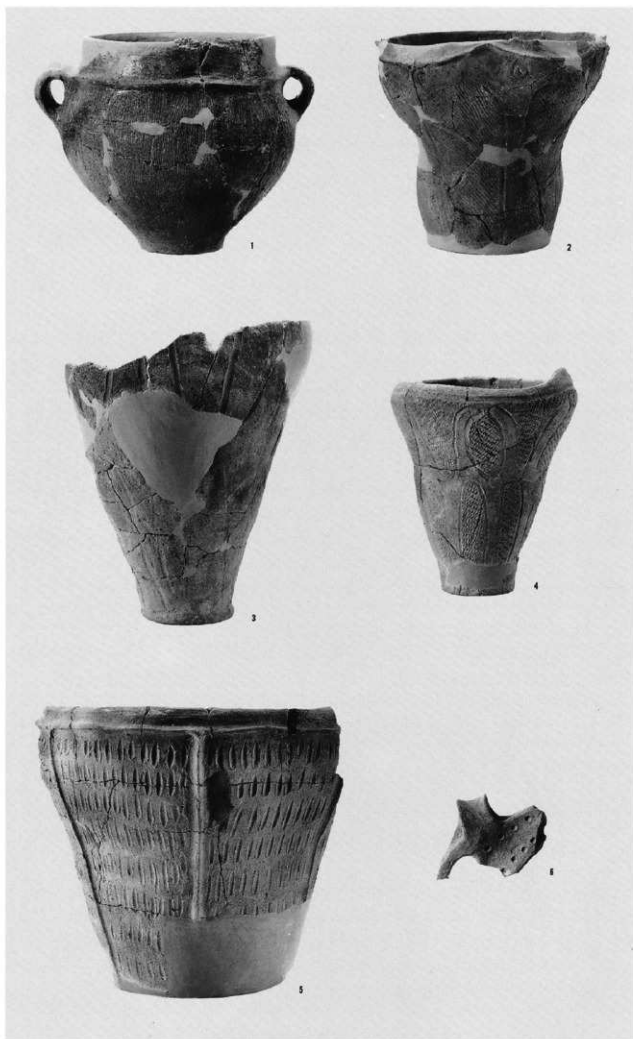
10 SB5341-36

11 SB5341-42

12 SB5341-47

13 SB5341-44

- 1 SB5342-1
- 2 SB5342-2
- 3 SB5342-4
- 4 SB5342-5
- 5 SB5342-8
- 6 SB5342-10





1



2



3



4



5



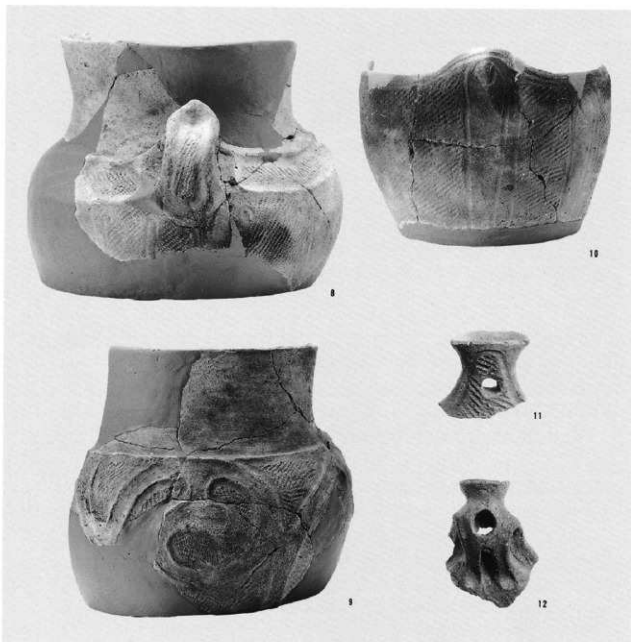
6



7

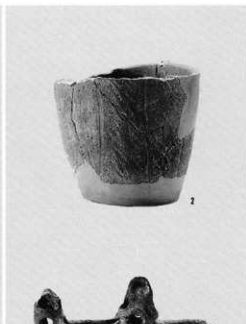
- 1 SB5343-1
- 2 SB5343-8
- 3 SB5343-26
- 4 SB5343-15
- 5 SB5343-23
- 6 SB5343-27
- 7 SB5343-33

- 8 SB5343-35
- 9 SB5343-38
- 10 SB5343-36
- 11 SB5343-5
- 12 SB5343-21



- 1 SB5344-1
- 2 SB5344-7
- 3 SB5344-8





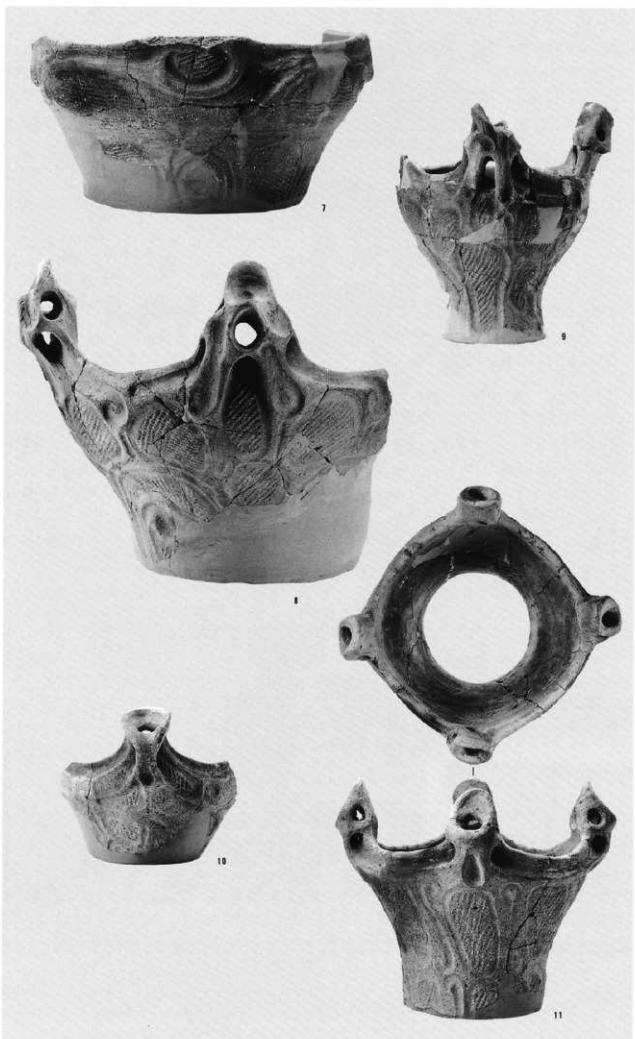
- 4 SB5344-13
- 5 SB5344-22
- 6 SB5344-23



- 1 SB5345-1
- 2 SB5345-2
- 3 SB5345-5
- 4 SB5345-11
- 5 SB5345-3
- 6 SB5345-13



- 7 SB5345-8
- 8 SB5345-21
- 9 SB5345-24
- 10 SB5345-28
- 11 SB5345-29





12



13



14



16



15



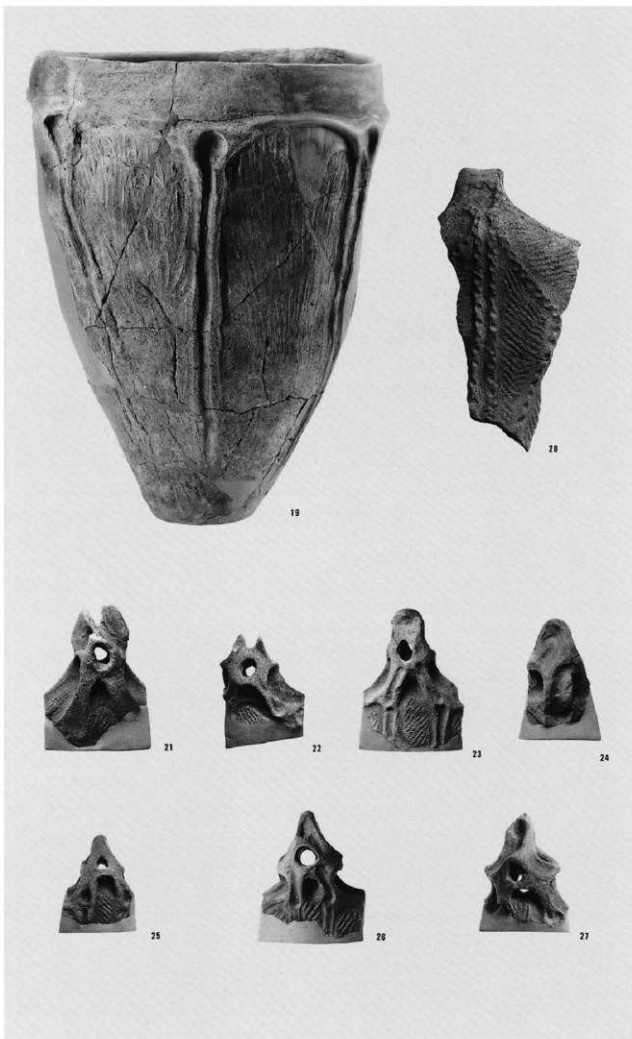
17



18

- 12 SB5345-34
- 13 SB5345-36
- 14 SB5345-44
- 15 SB5345-47
- 16 SB5345-57
- 17 SB5345-65 (S=%)
- 18 SB5345-87

- 19 SB5345-67
- 20 SB5345-56
- 21 SB5345-9
- 22 SB5345-12
- 23 SB5345-22
- 24 SB5345-23
- 25 SB5345-26
- 26 SB5345-32
- 27 SB5345-33





1 SB5346-1

2 SB5346-2

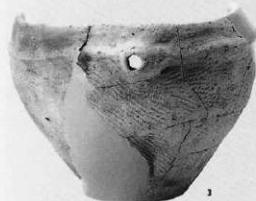


1 SB5348-1

2 SB5348-9

3 SB5348-7

4 SB5348-12



5 SB5348-6



1 SB5350-1

2 SB5350-7

3 SB5350-16

4 SB5350-23

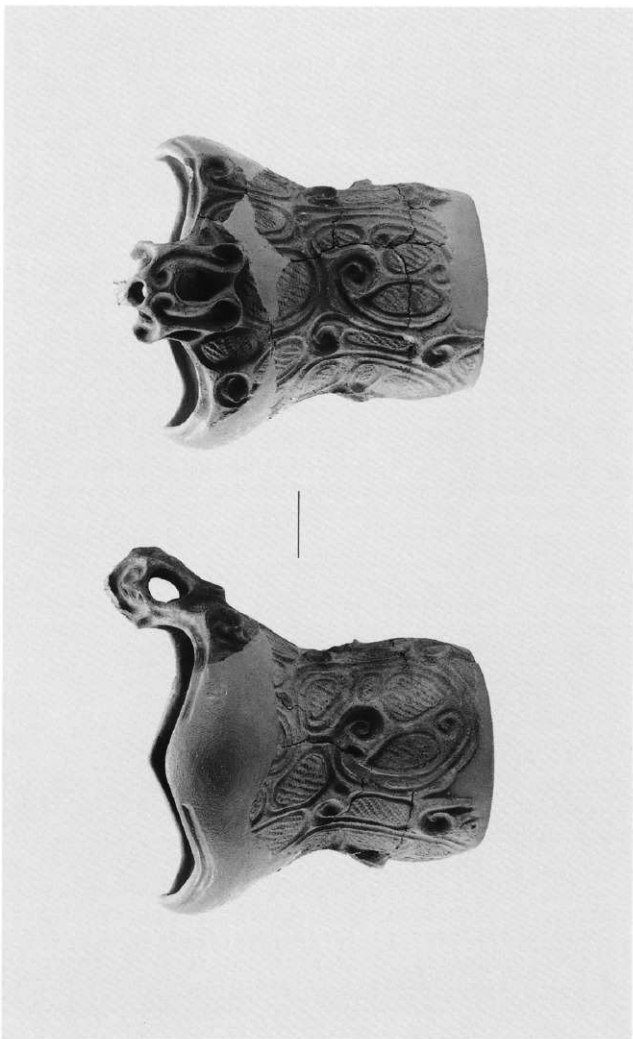


5 SB5350-6

6 SB5350-25



7 SB5350-9





8



9



10



11

8 SB5350-30

9 SB5350-39

10 SB5350-8

11 SB5350-38



1



2

1 SB5351-1

2 SB5351-2

3 SB5351-3

4 SB5351-4



5 SB5351-10

6 SB5351-11

7 SB5351-12



5



6



7

8 SB5351-16

9 SB5351-19





- 10 SB5351-21
- 11 SB5351-24
- 12 SB5351-9
- 13 SB5351-13
- 14 SB5351-14



左: 1 SB5352-1

右: 1 SB5353-1



左: 1 SB6701-1

2 SB6701-6

3 SB6701-7

右: 1 SB6702-2



左: 1 SB6703-1

右: 1 SB9001-1



2-1 SB9001-2-1

2-2 SB9001-2-2

3 SB9001-6

4 SB9001-7

5 SB9001-8

6 SB9001-11

7 SB9001-13

8 SB9001-15



2-1



2-2



3



4



5



6



7

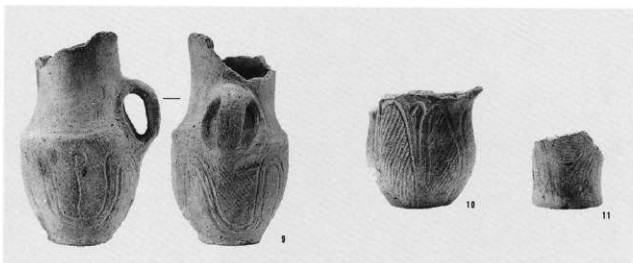


8

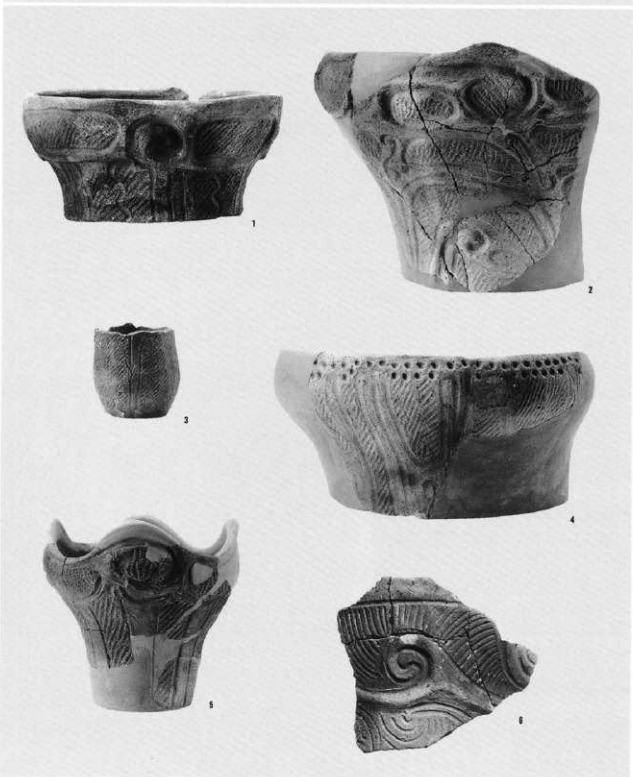


8

- 9 SB9001-24
- 10 SB9001-31
- 11 SB9001-33



- 1 SB9003-1
- 2 SB9003-4
- 3 SB9003-6
- 4 SB9003-7
- 5 SB9003-13
- 6 SB9003-18





1



2

1 SB9004-1

2 SB9004-8



1



2

1 SB9005-1

2 SB9005-2

3 SB9005-3



1



1



2

1 SB9006-1

2 SB9006-2

- 1 SB9007-4
- 2 SB9007-5
- 3 SB9007-6
- 4 SB9007-7

