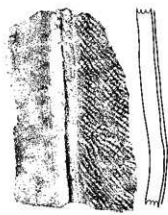
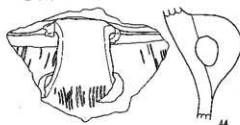


1層 (44)

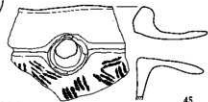


43



44

埋土 (45~47)



45



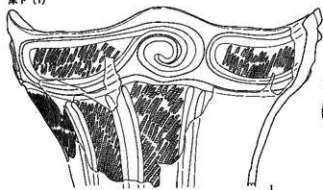
46



47

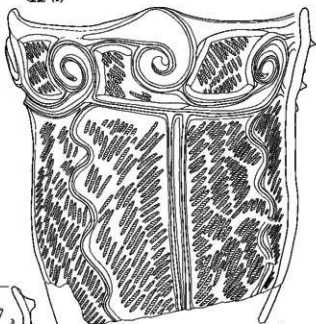
SB5341 (1~10)

床下 (1)



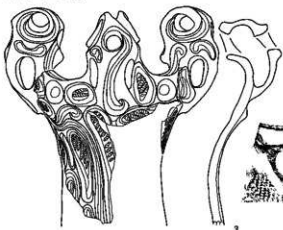
1

埋土 (2)



2

伊 (3・4・6~10)



3



4

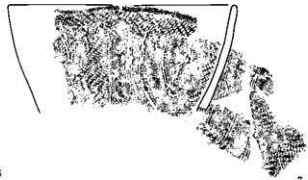
床 (5)



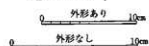
5



6



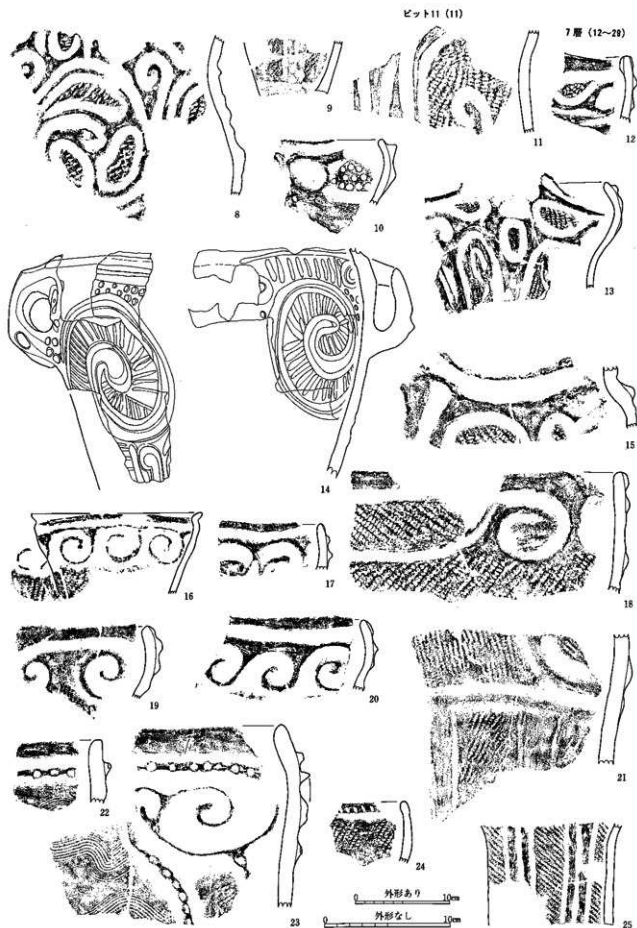
7

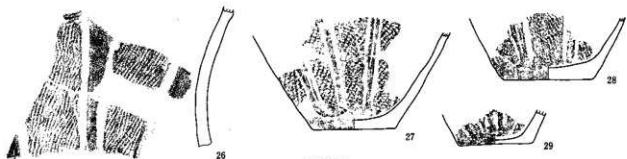


外形あり

0 10cm

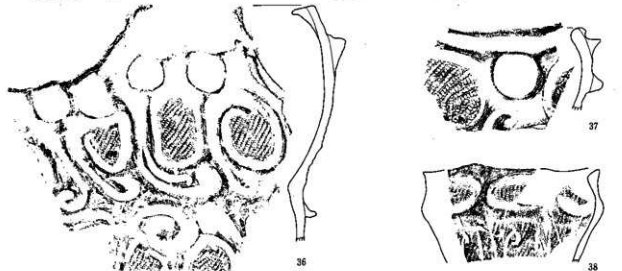
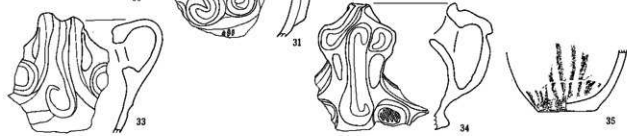
外形なし



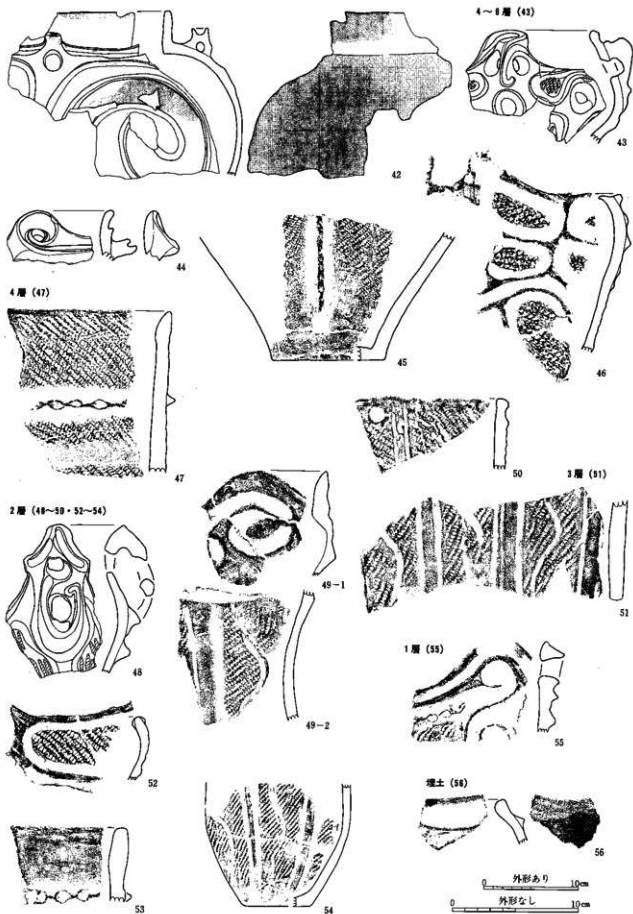


5層 (30・31・32・42・44~46)

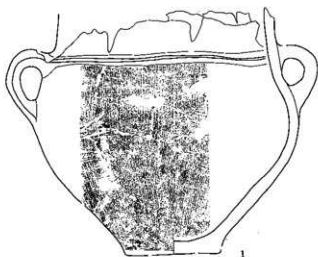
6層 (32)



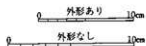
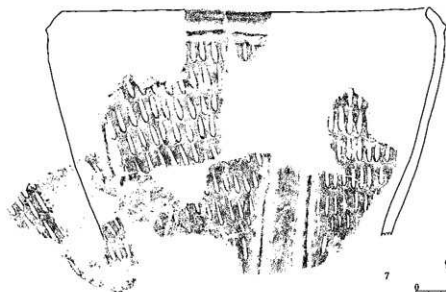
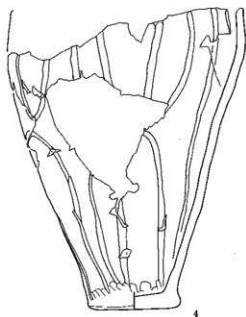
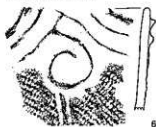
0 外形あり 10cm
0 外形なし 10cm



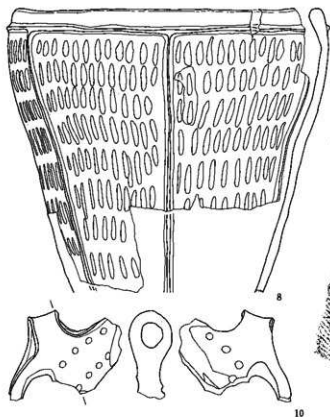
SB5342 (1~12)
 埴輪 (1~4)



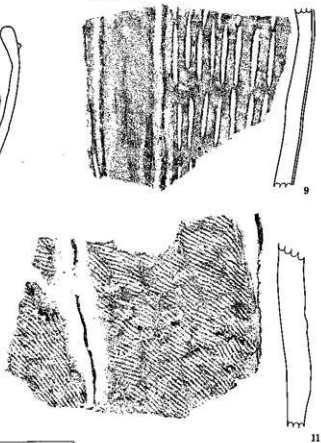
埴土 (6・7・9~12)



1層構造 (8)

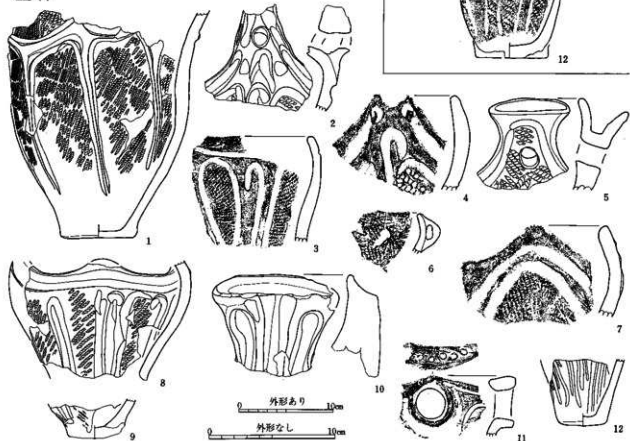


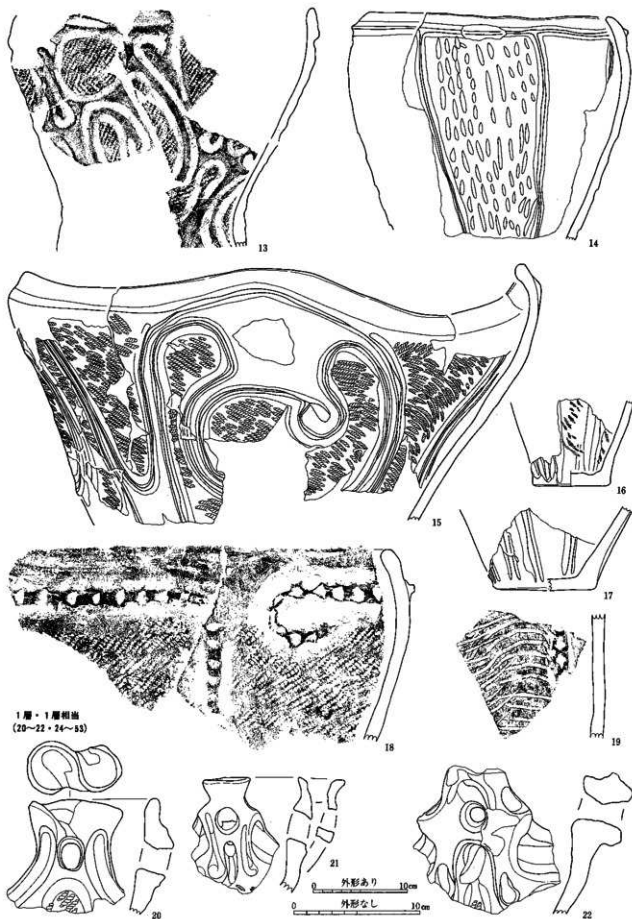
埋土 (9~12)



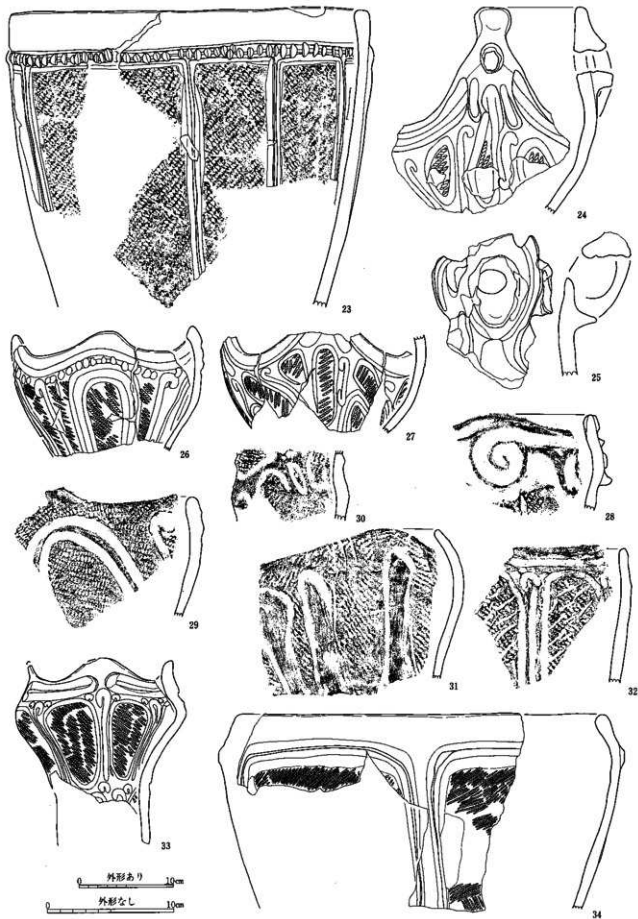
SB5343 (1~53)
埋土 (1)

2層 (2~13・23)

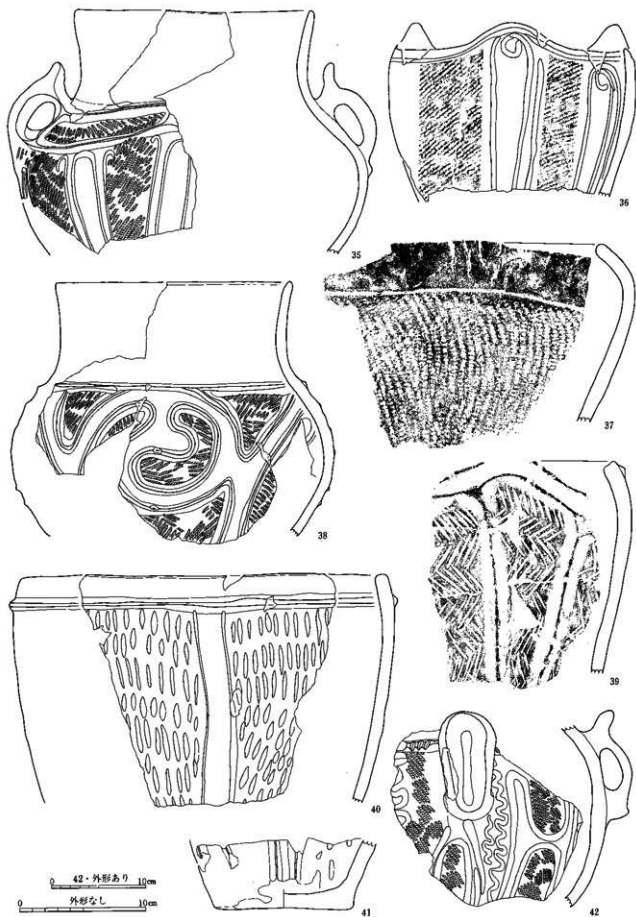


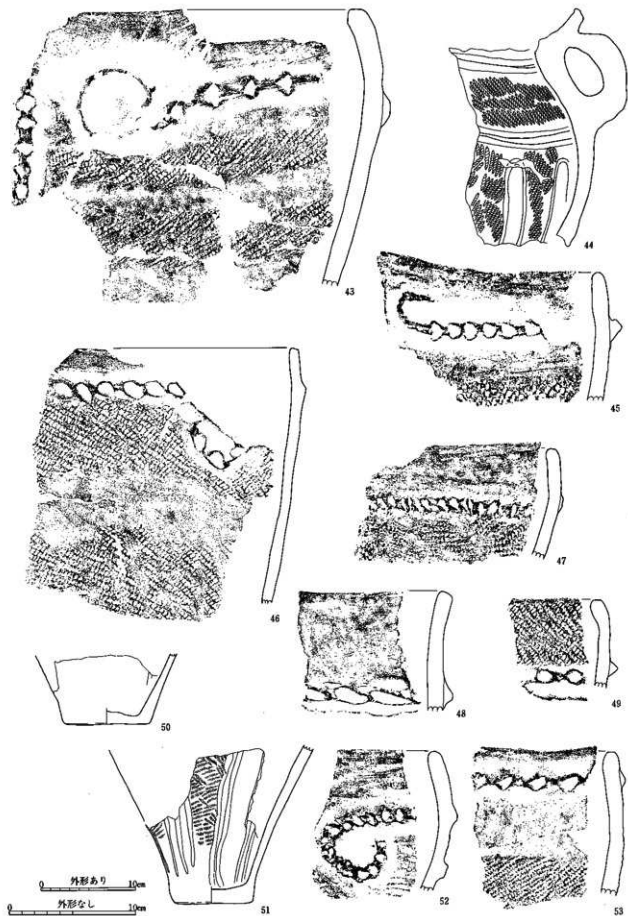


1層・1層相出
(20~22・24~25)



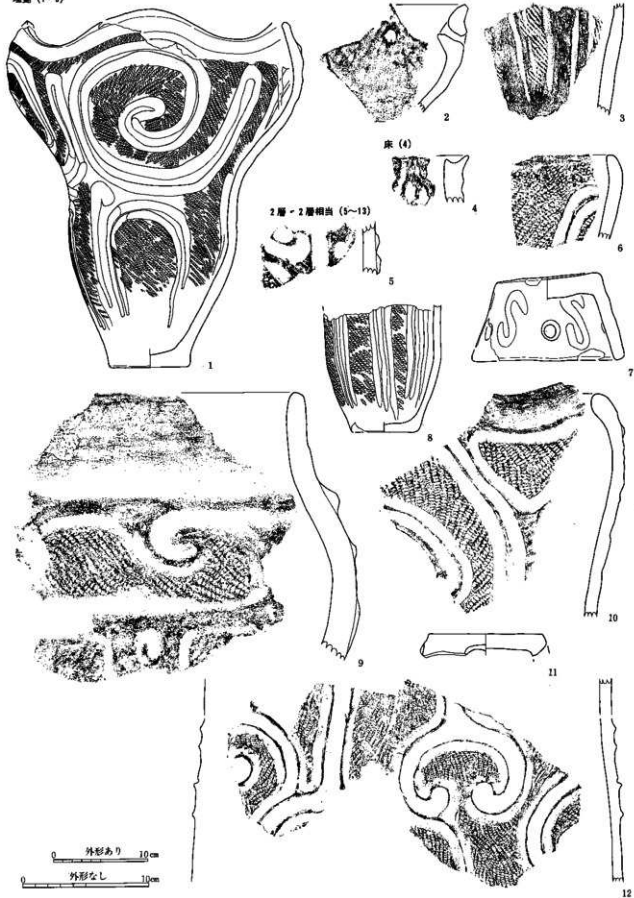
中期後葉の土器 67 (現代遺跡群 SBS343)



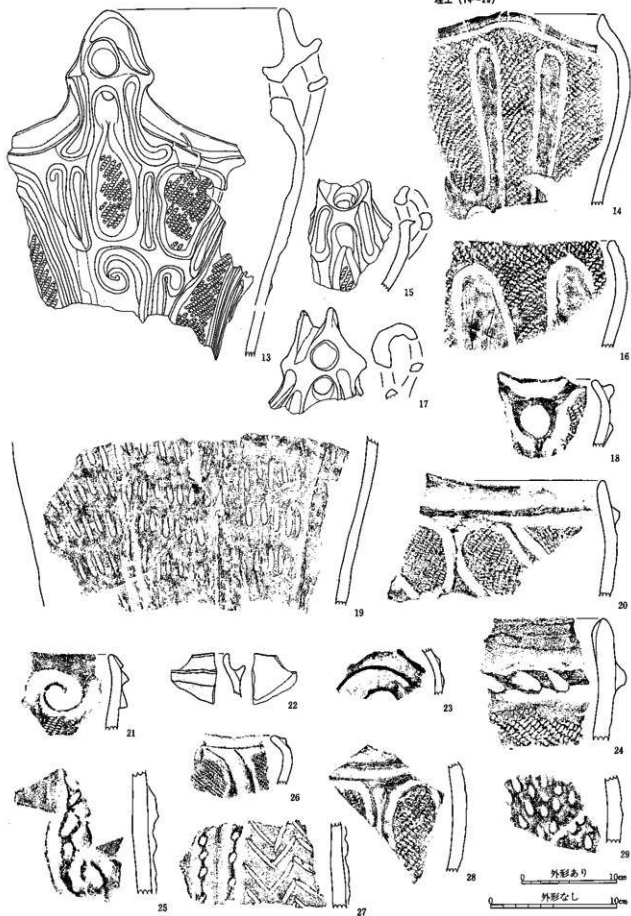


中期後葉の土器 69 (層代遺群群 SBS343)

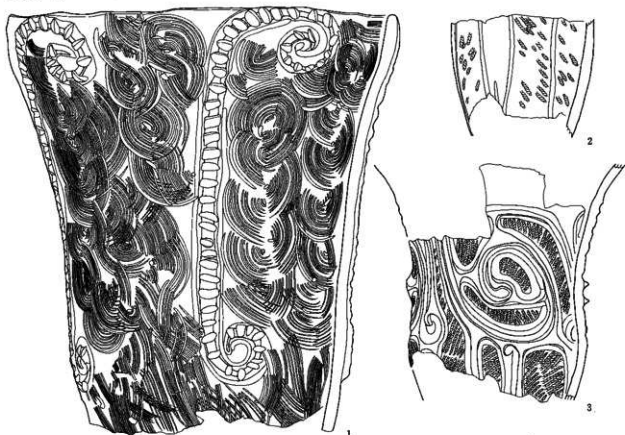
SBS344 (1~28)
 深鉢 (1~3)



埴土 (14~18)



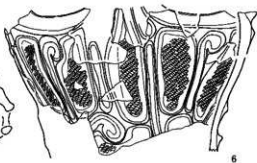
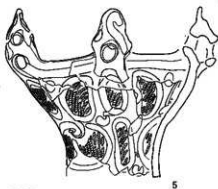
SB5345 (1~10)
 埴輪 (1~3)



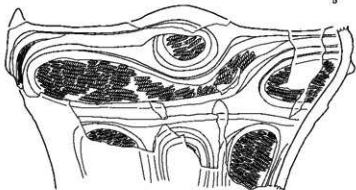
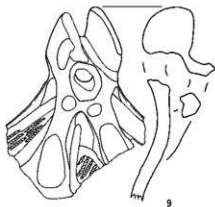
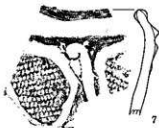
床 (4)



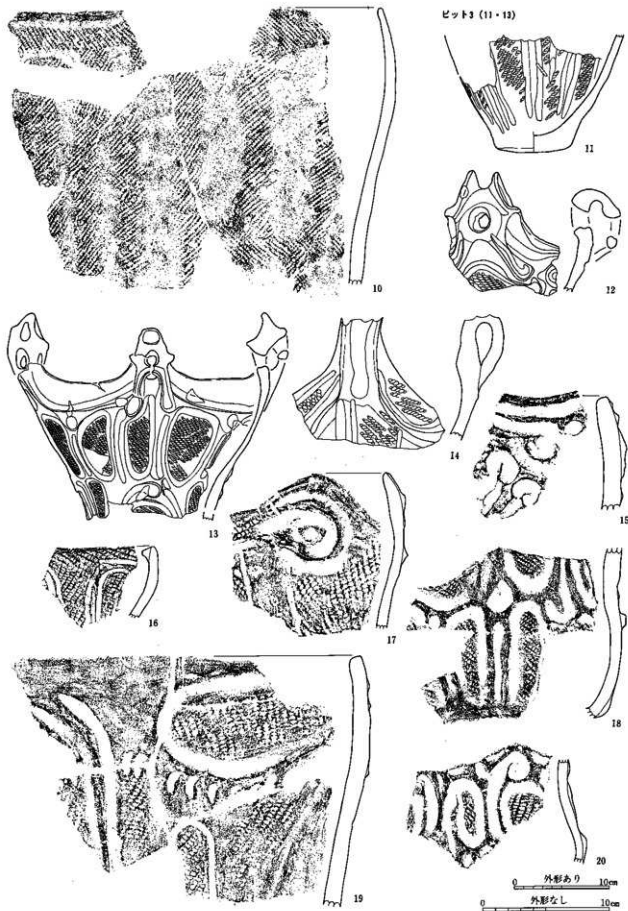
埴7層 (5・8・10)



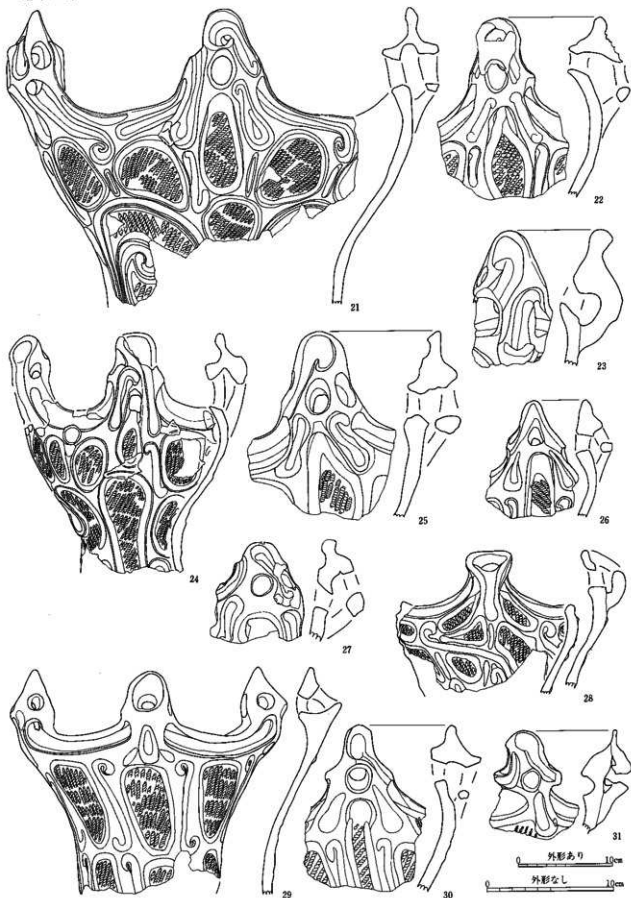
5層 (7・9・12・14~18)

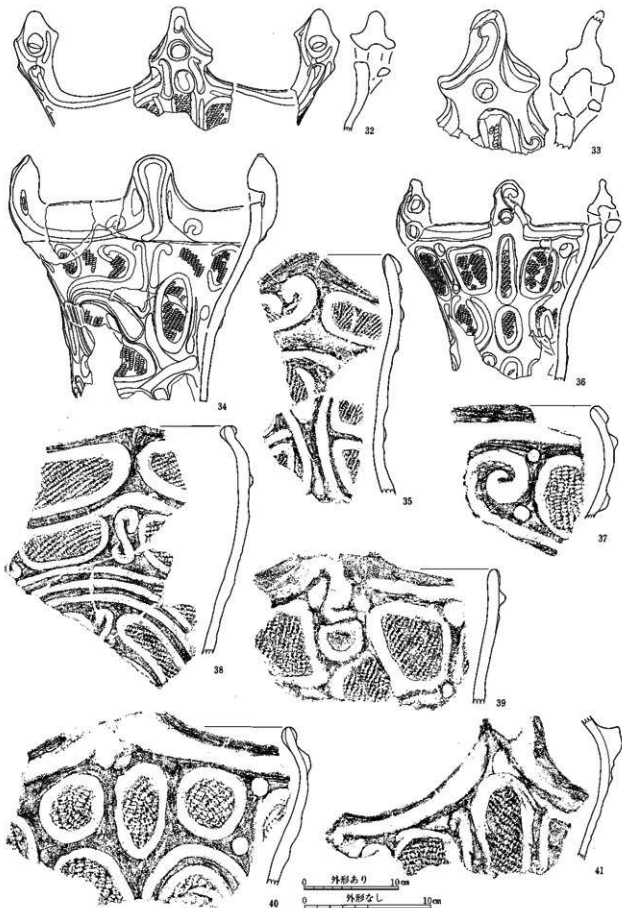


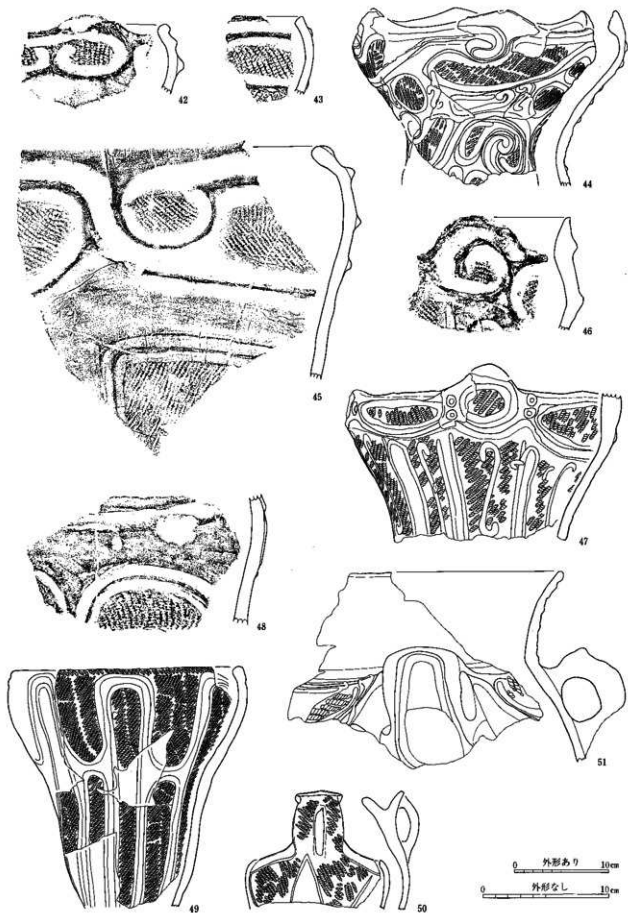
0 外形あり 10cm
 0 外形なし 10cm

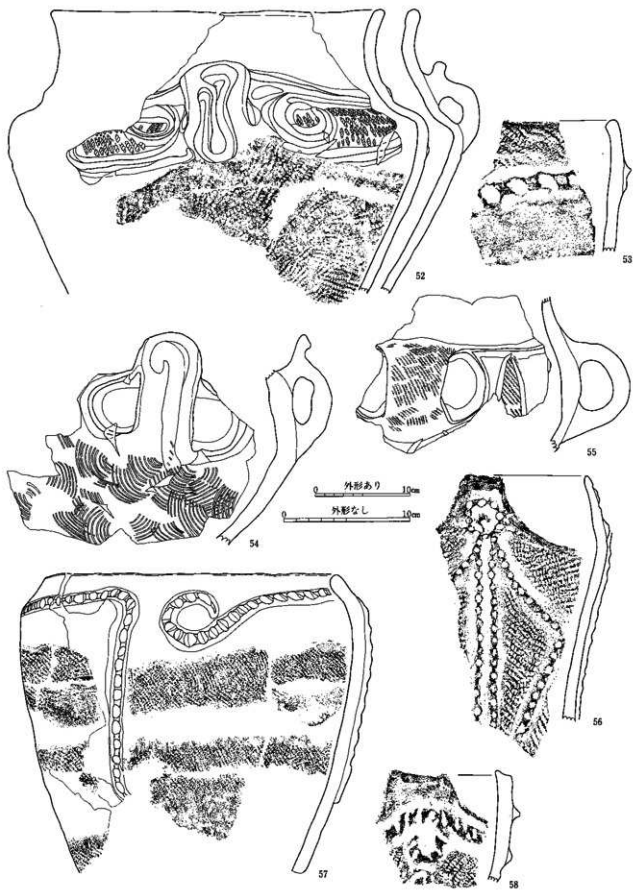


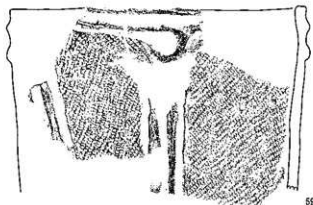
2層 (21~31)



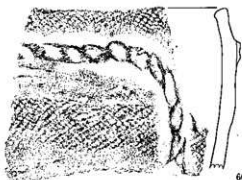








59



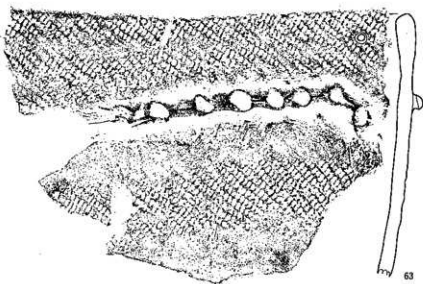
60



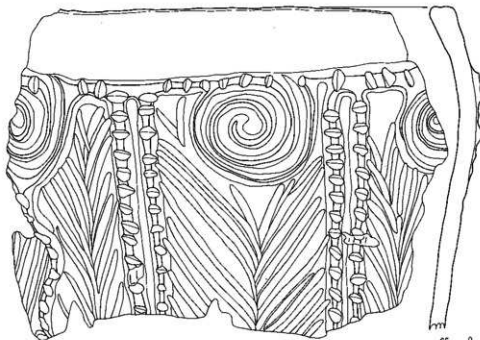
61



62



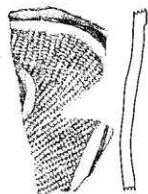
63



64



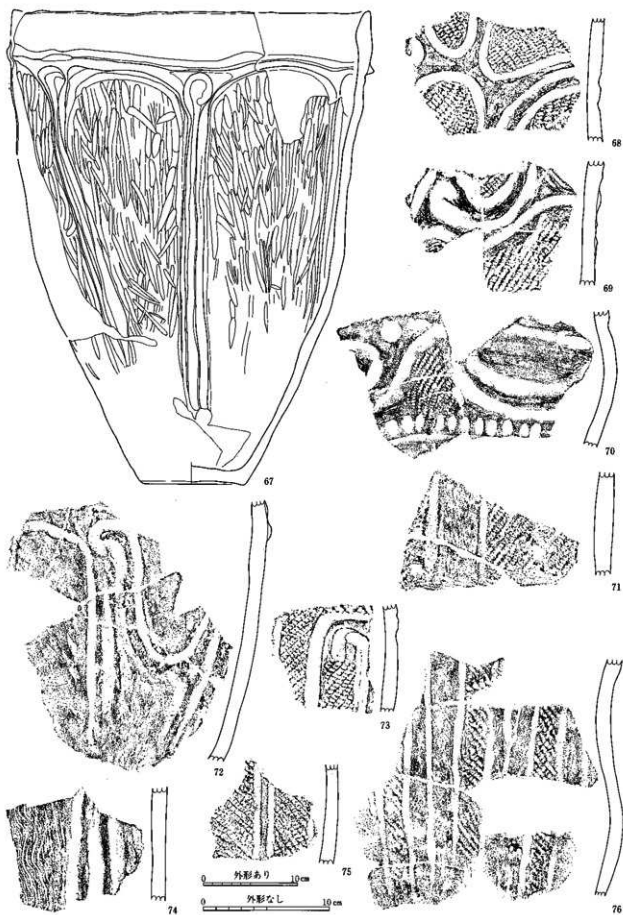
65



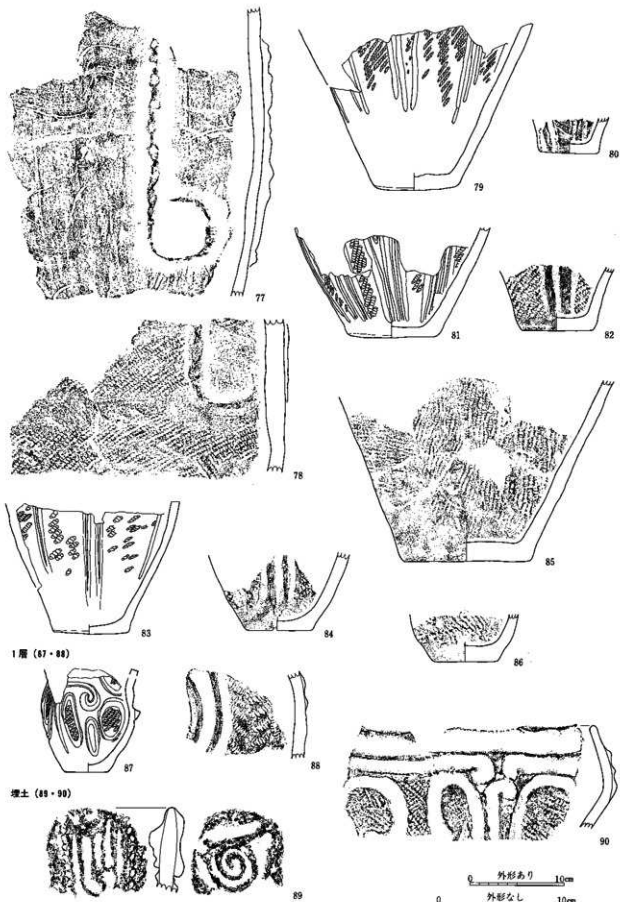
66

0 外形あり 10cm

0 外形なし 10cm



中期後葉の土器 78 (田代遺跡群 SB3345)

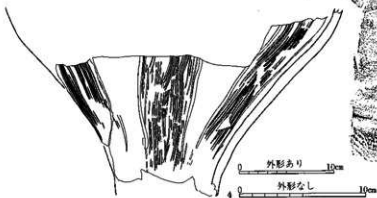
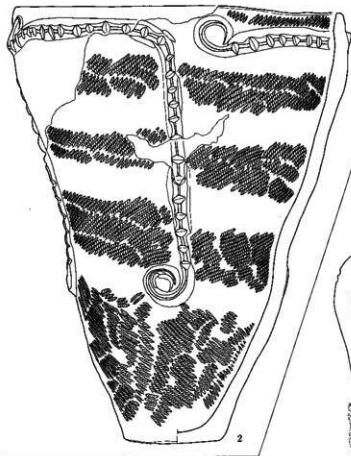
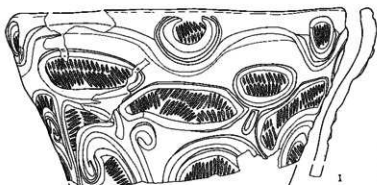


1層 (87・88)

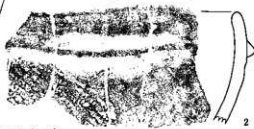
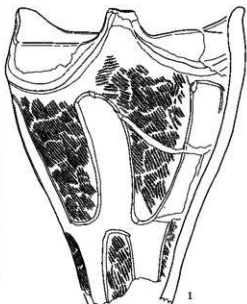
埋土 (89・90)

0 外形あり 10cm
0 外形なし 10cm

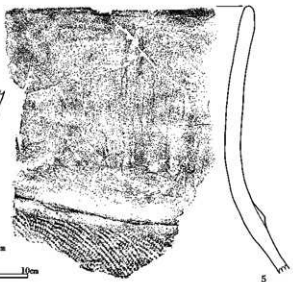
SB5346 (1・2)
埴輪 (1・2)

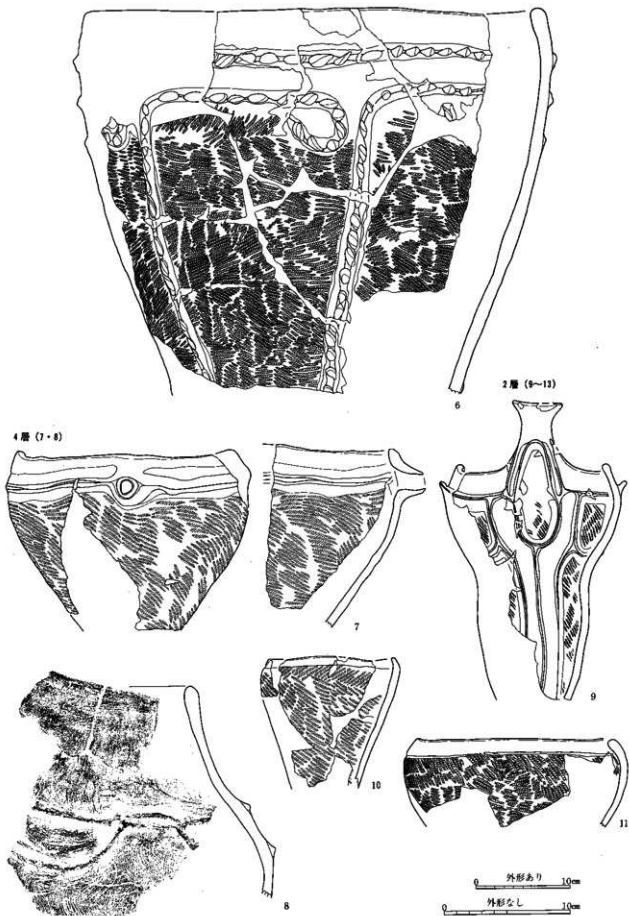


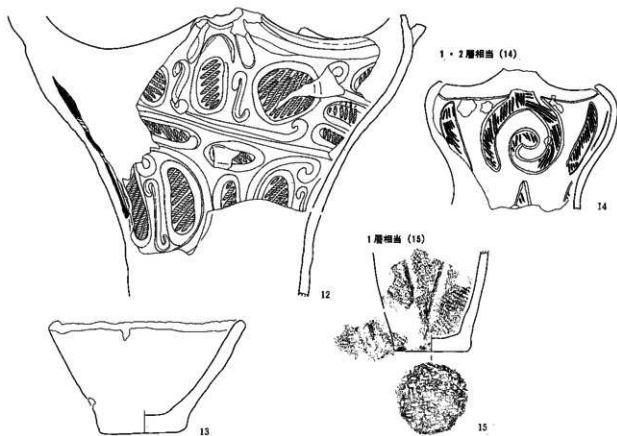
SB5348 (1~15)
8層相出 (1~2)



5層相出 (3~6)



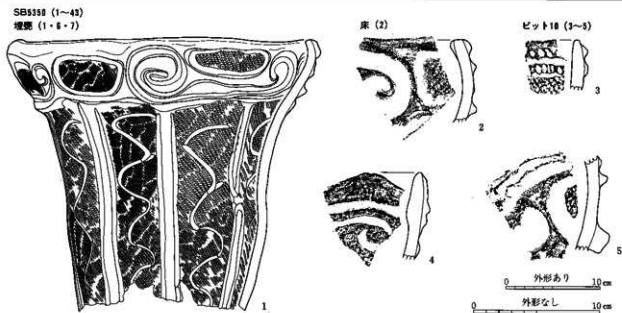


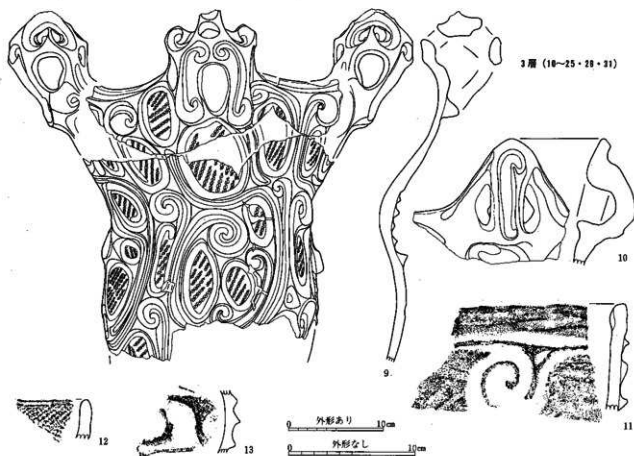
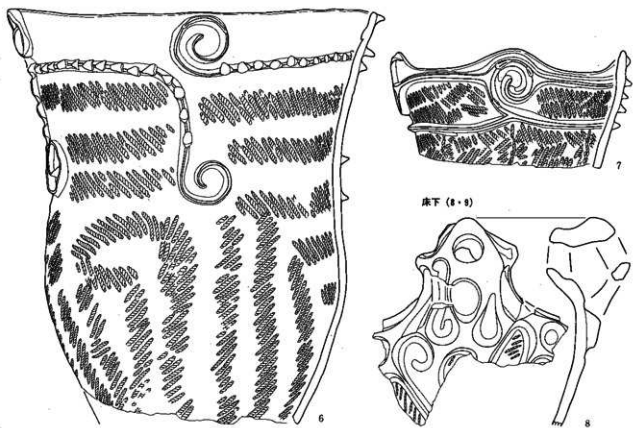


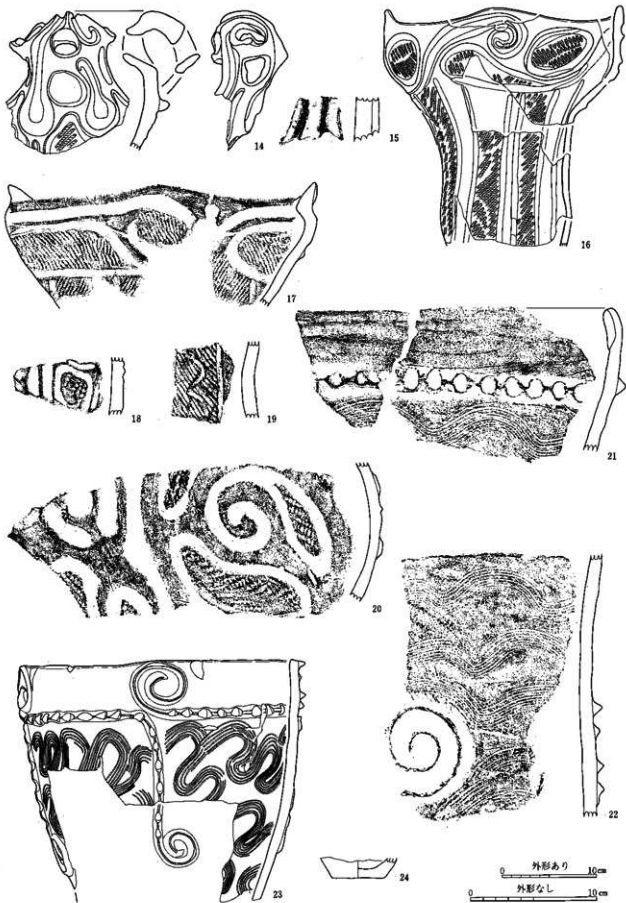
SB5348 (1~3)
埋土 (1~3)

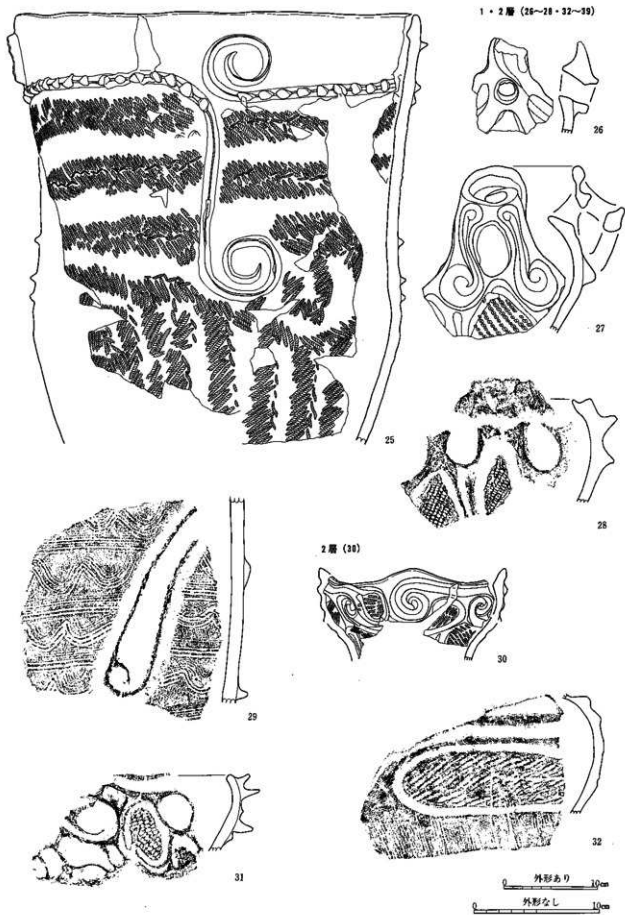


SB5358 (1~4)
埋土 (1・5・7)











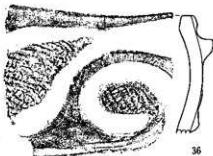
33



34

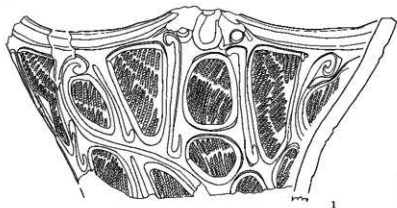


35



36

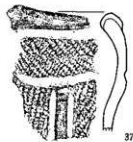
SB5351 (1~34)
埋藏 (1~4)



1



2



37



38



39

1層 (40・41)



40

41

埋土 (42・43)

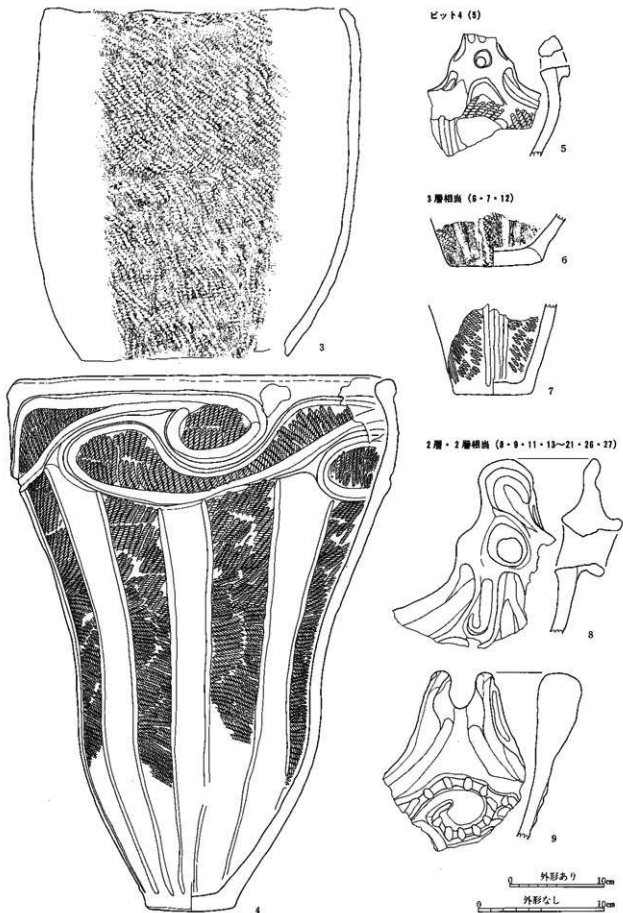


42

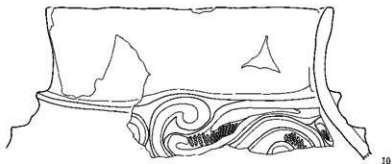
43

0 外形あり 10cm

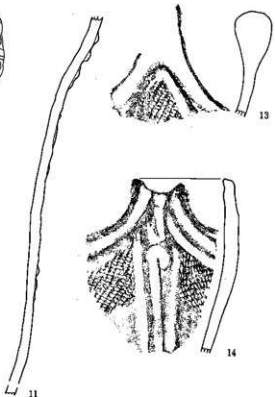
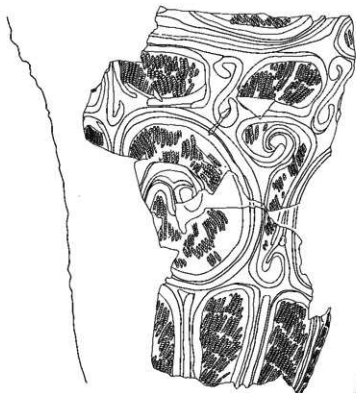
0 外形なし 10cm



炉 (10)



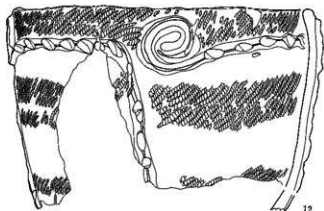
10



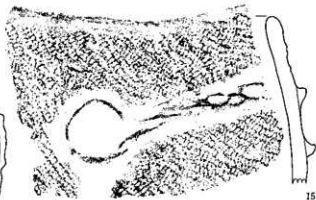
13



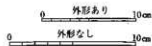
14



12



15





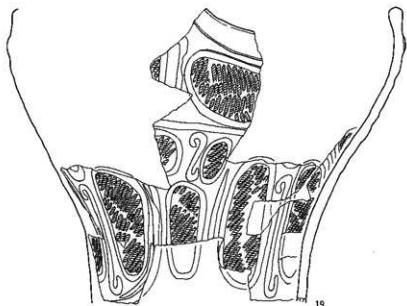
16



17



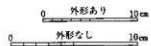
18

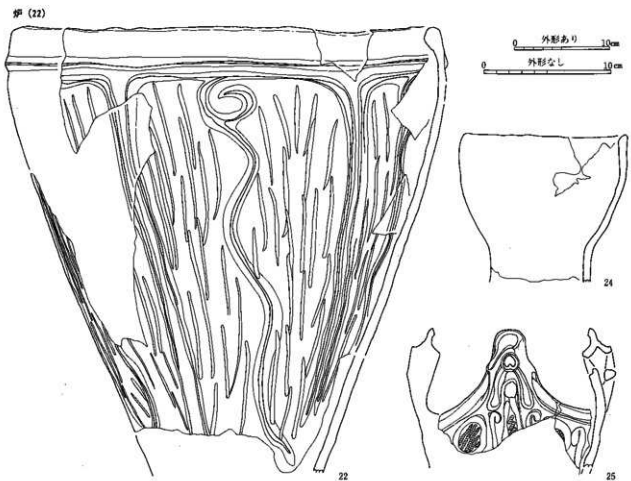
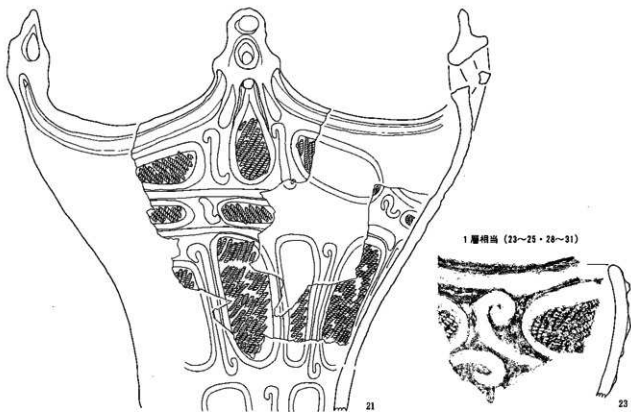


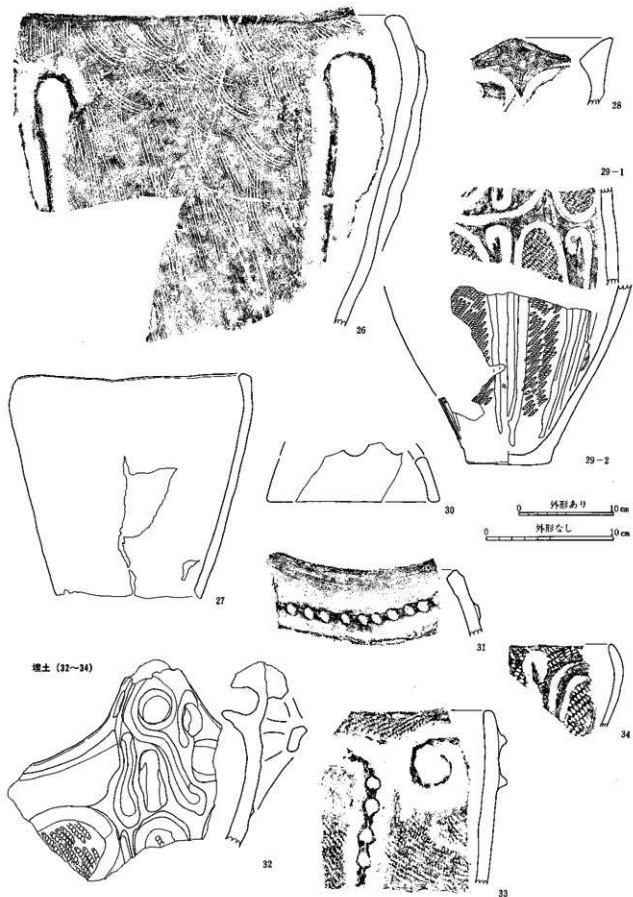
19



20







SB5352 (1~8)
埴輪 (1)



1層 (2)



麻直 (3)



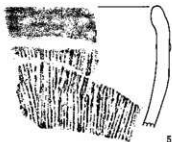
2

3

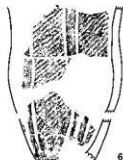
埴 (4~7)



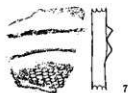
4



5

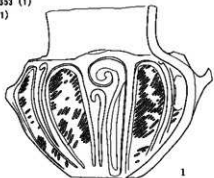


6



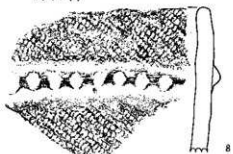
7

SB5353 (1)
埴 (1)



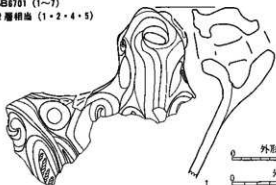
1

ピット1 (8)

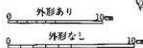


8

SB6701 (1~7)
2層相曲 (1・2・4・5)

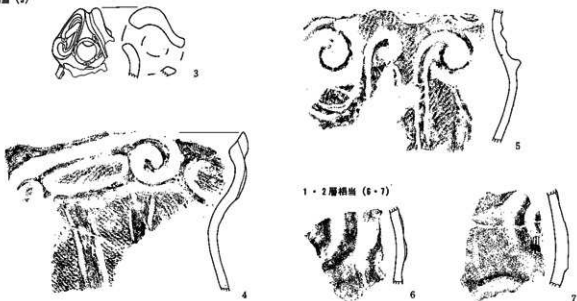


1



2

1層相画 (2)



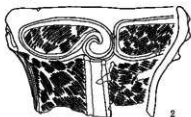
1・2層相画 (6-7)

SB6702 (1-6)

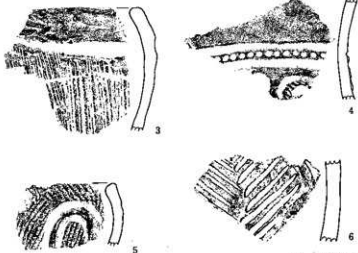
床 (1)



伊 (2)

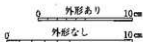
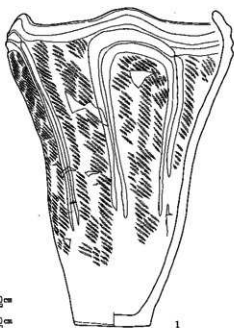


1層 (3-6)

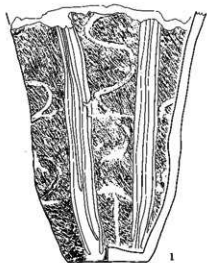


SB6703 (1)

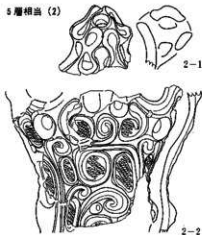
埋蓋 (1)



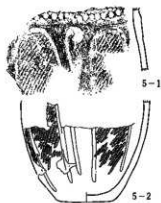
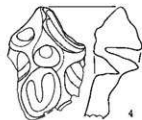
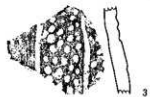
SB9001 (1~24)
浮葉 (1)



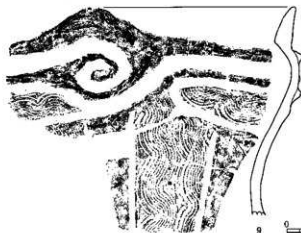
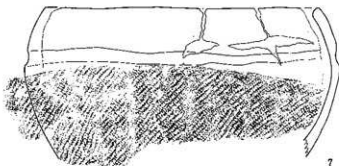
5層相出 (2)



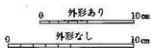
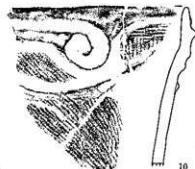
4・5層・4・5層相出 (2~7)



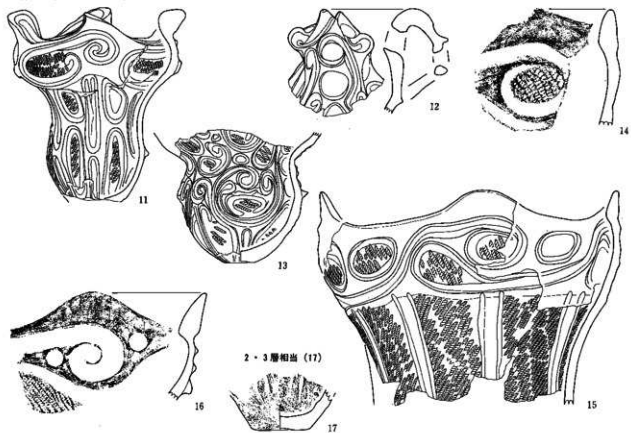
4層相出 (8・9)



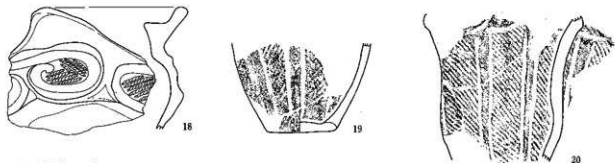
3・4層相出 (10)



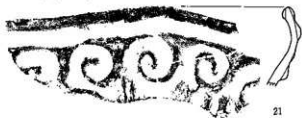
2層相出 (11~16・18~20)



2・3層相出 (17)



1~3層 (21・27)

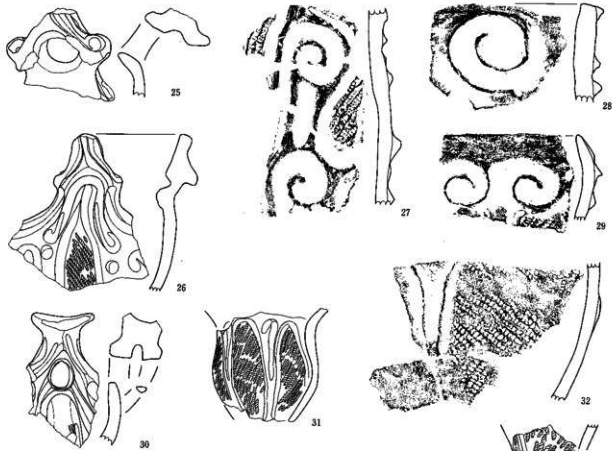


1・2層相出 (22~24)

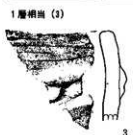


1層相出 (23・25・26・28~32)





SB9002 (1~3)
1・2層相出 (1~2)



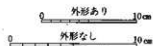
※ただし34は図版351

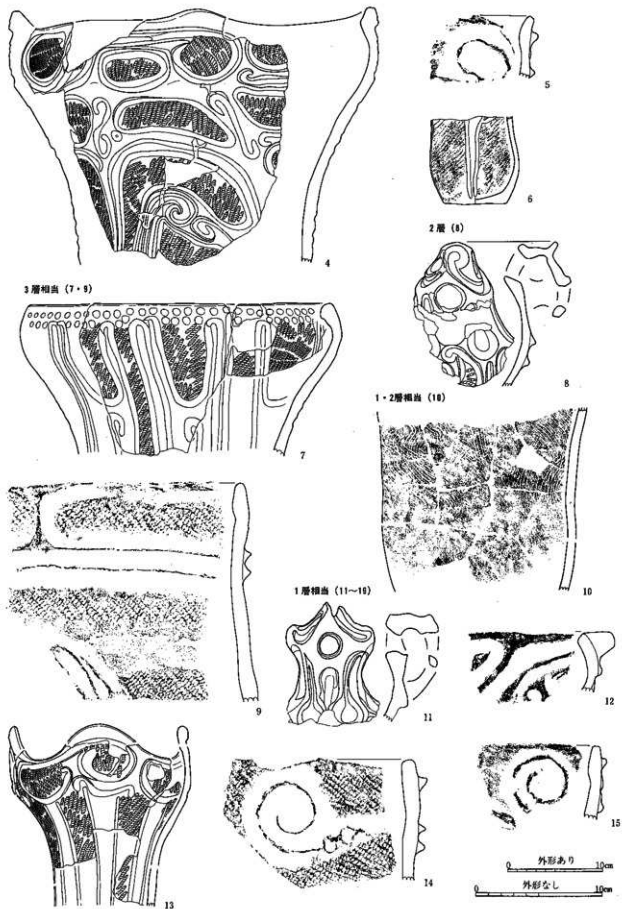
1層相出 (3)

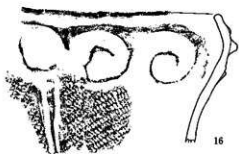
SB9003 (1~19)
埴輪 (1・2)



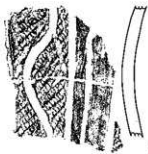
埴 (3~9)



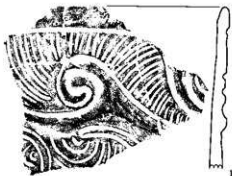




16



17



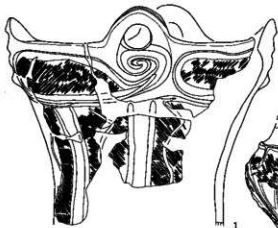
18



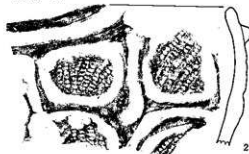
19

1層 (2~11)

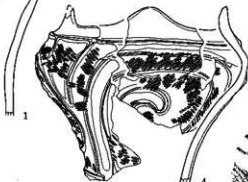
SB9904 (1~11)
 様態 (1)



1



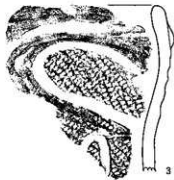
2



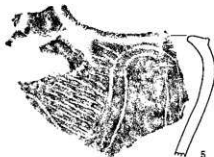
4



6



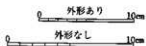
3

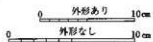
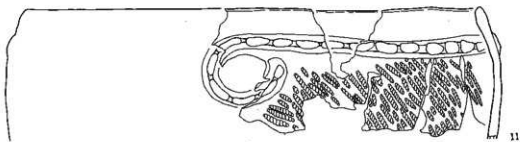
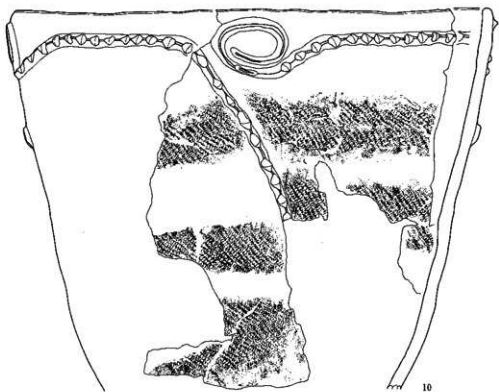
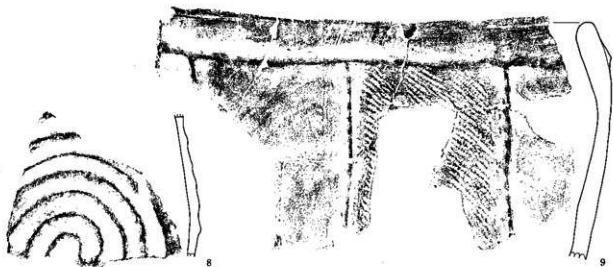


5

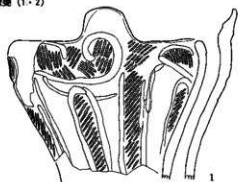


7

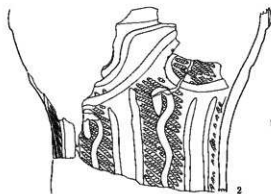
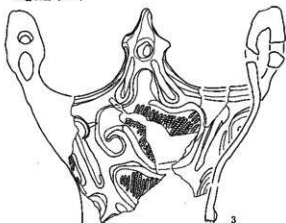




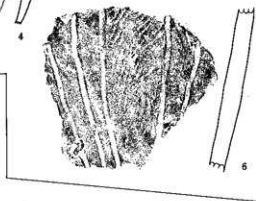
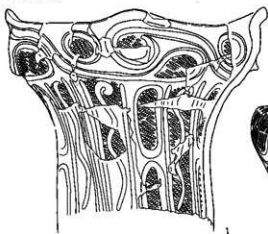
SB9065 (1~4)
埋藏 (1・2)



2層相当 (3~4)



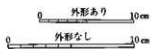
SB9066 (1~10)
埋藏 (1・2)



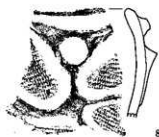
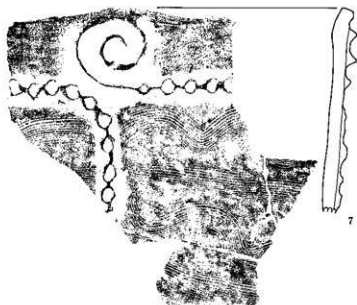
芽 (3~5)



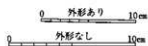
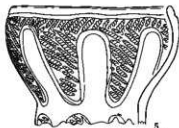
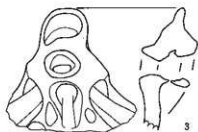
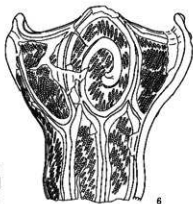
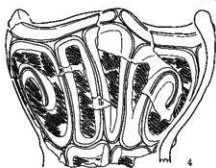
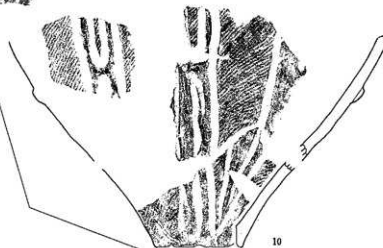
1層 (8・9~10)

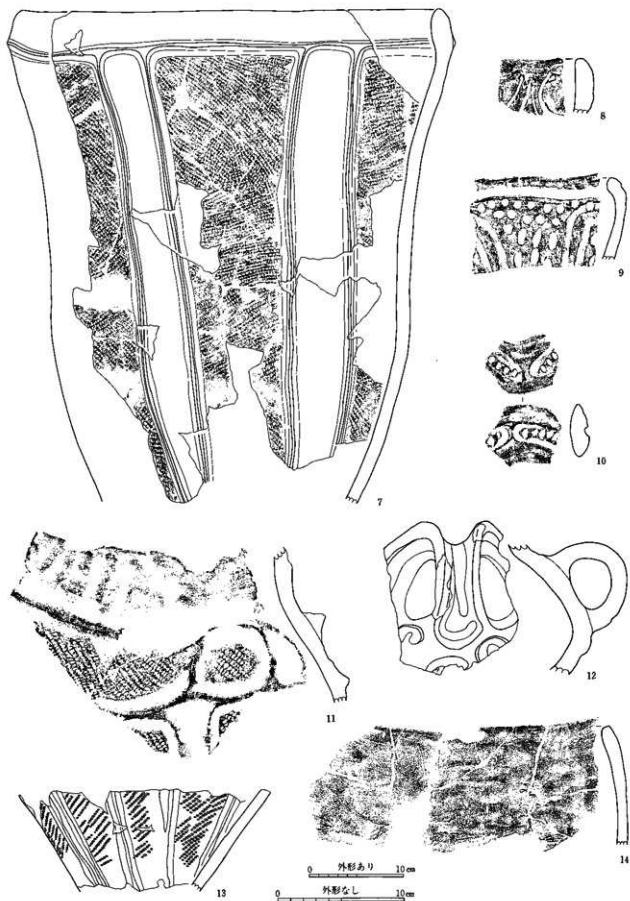


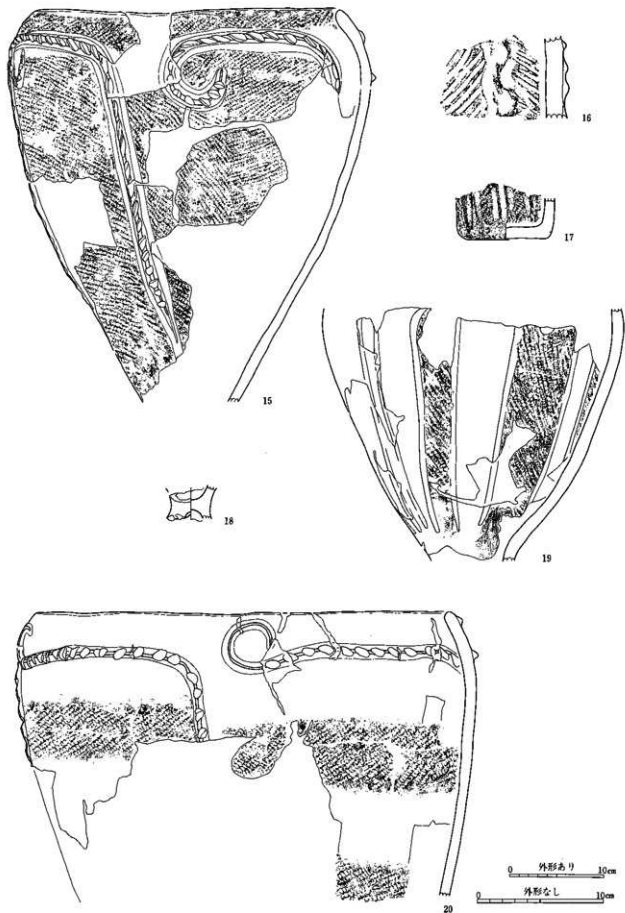
ピット1 (7)



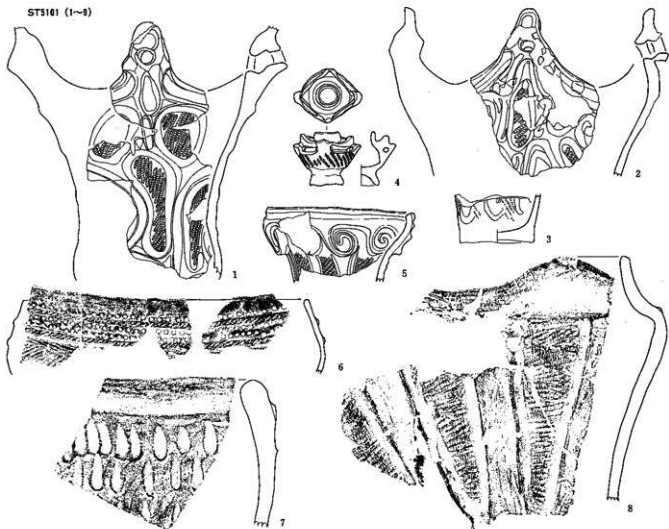
SB9007 (1~20)
2層 (1~20)



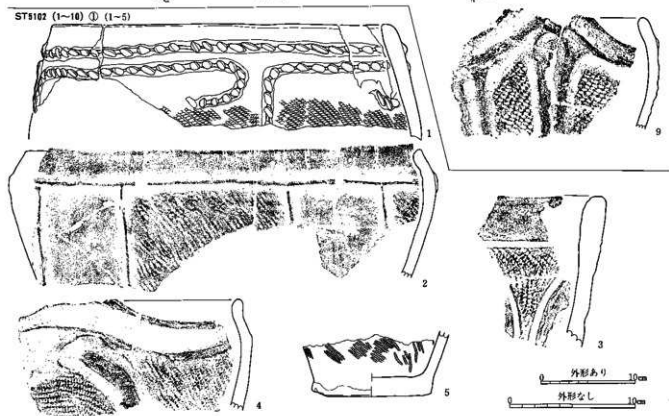




ST5101 (1~8)

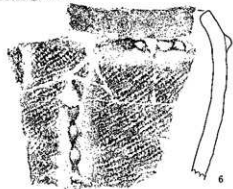


ST5102 (1~10) ① (1~5)

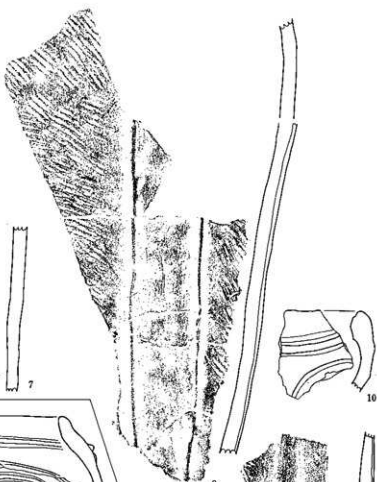


0 外形あり 10cm
0 外形なし 10cm

ST5102② (6-10)



6



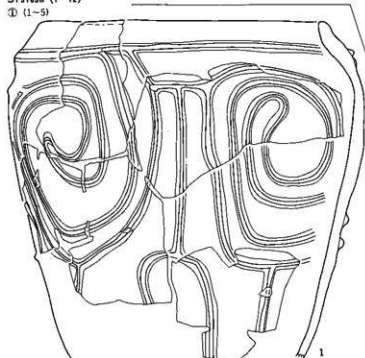
7



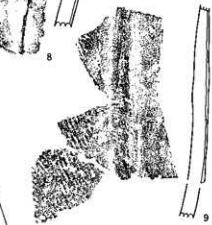
8

ST5102a (1-12)

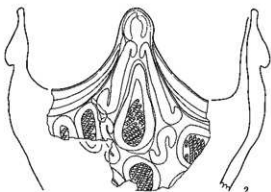
① (1-5)



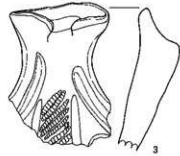
9



10



11



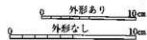
12



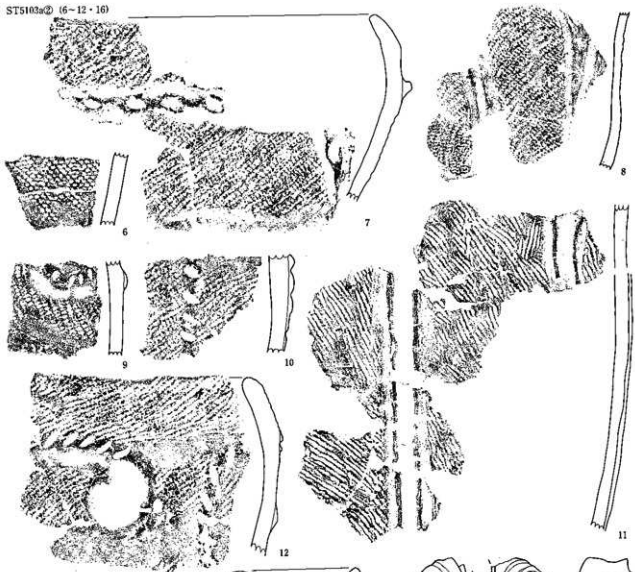
13



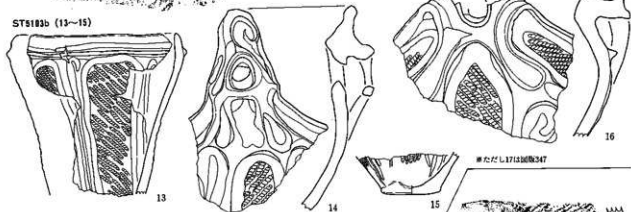
14



ST5103a② (6-12・16)



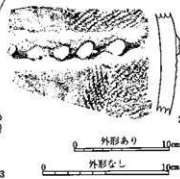
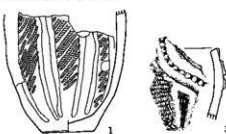
ST5103b (13~15)



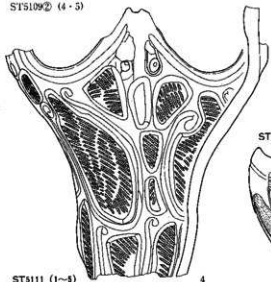
ST5105 (1)



ST5109 (1~5) ① (1~3)

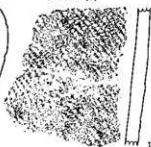
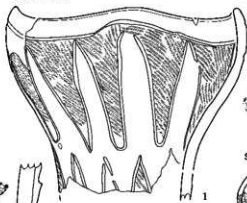


ST5109② (4・5)

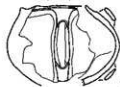


ST5110 (1)

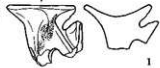
ST5112 (1)



ST5111 (1~4)



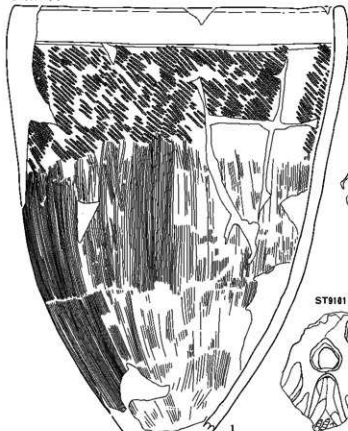
ST5114 (1)



ST5115 (1)

ST5123 (1)

ST5118 (1・2)



ST5124 (1・2)

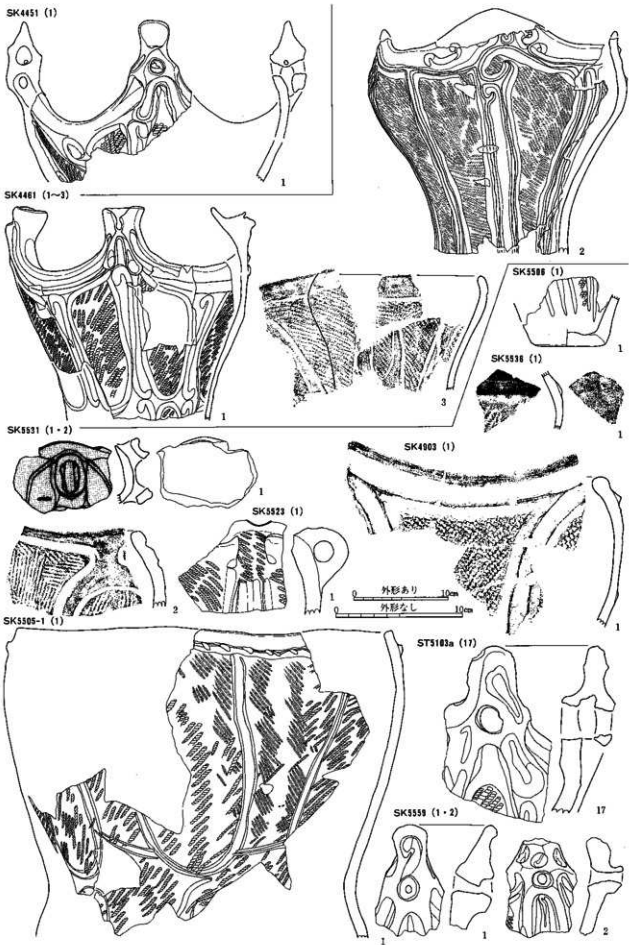


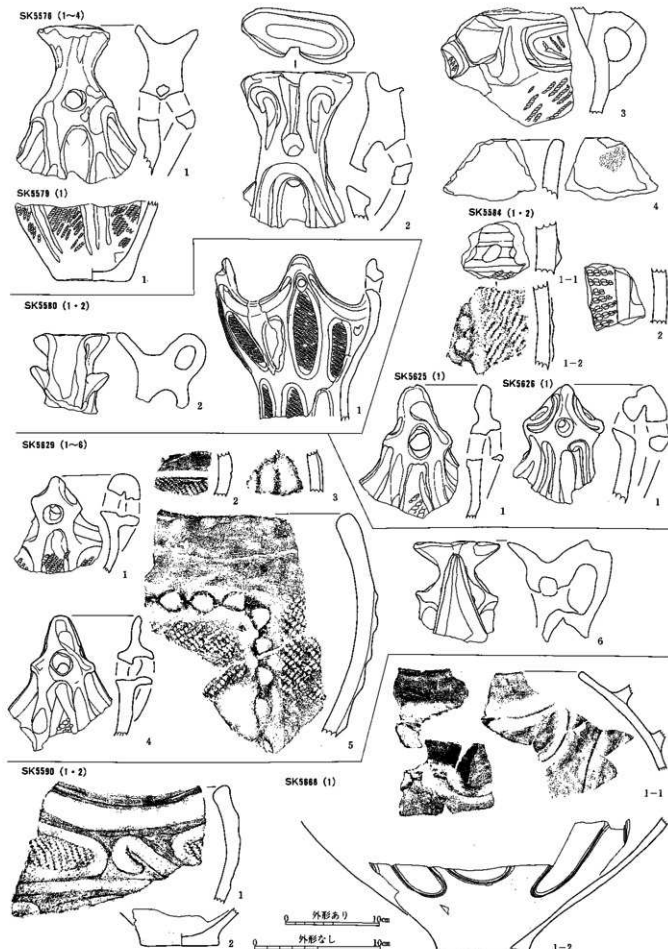
ST9101 (1~3)

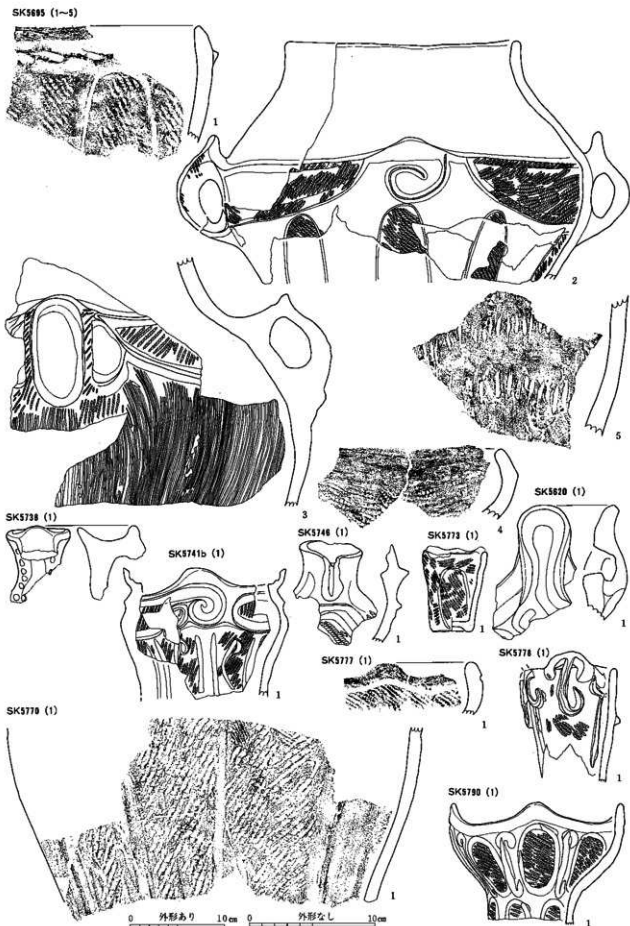


0 外形あり 10cm

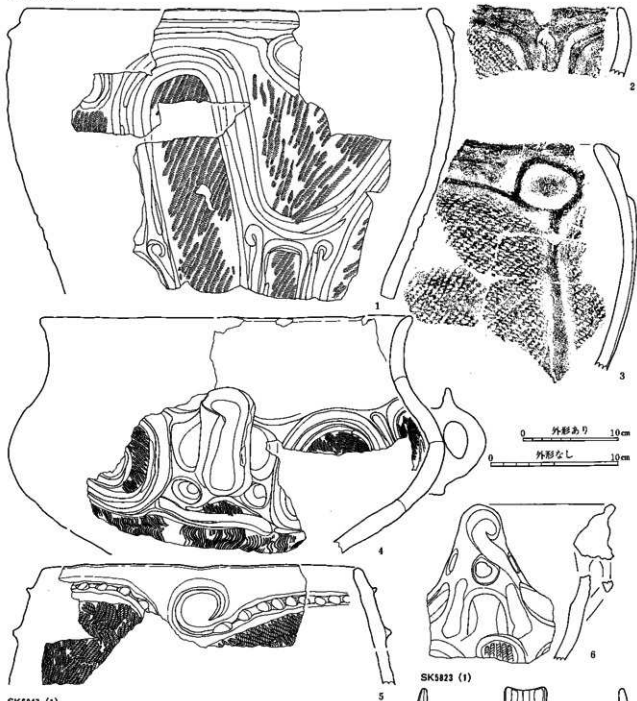
0 外形なし 10cm



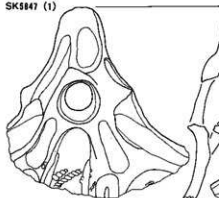




SK5812 (1~8)



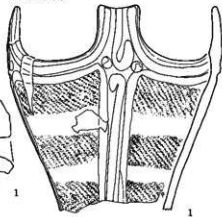
SK5847 (1)



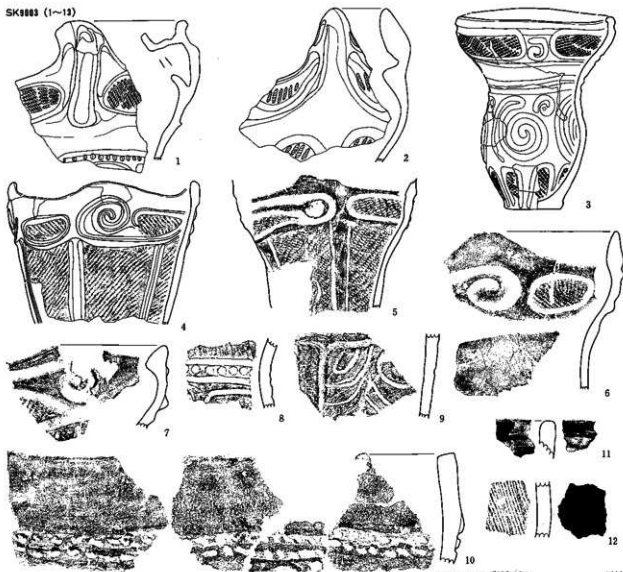
SK6720 (1)



SK5823 (1)



SK9003 (1~13)



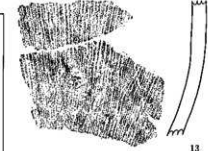
SK9004 (1)



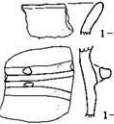
SK9005 (1)



SB9001 (34)



SK9022 (1)



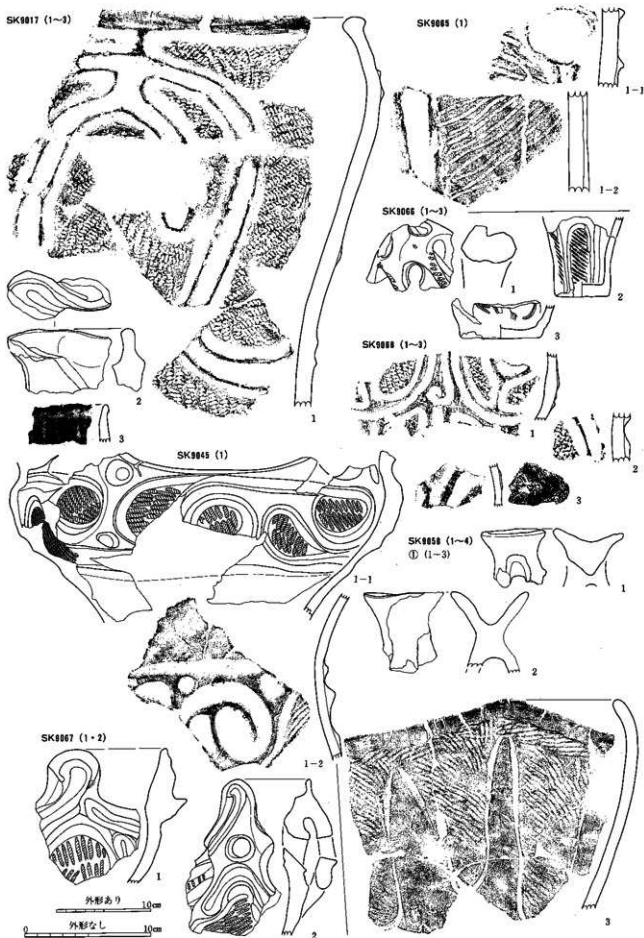
SK9030 (1~2)



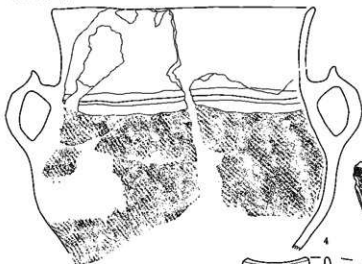
SK9039 (1)



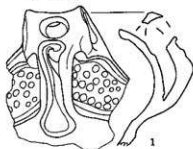
0 外形あり 10cm
0 外形なし 10cm



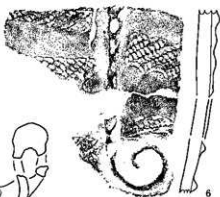
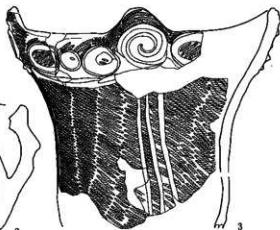
SK9058② (4)



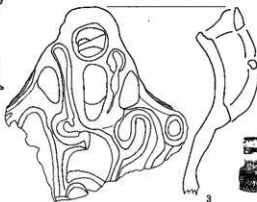
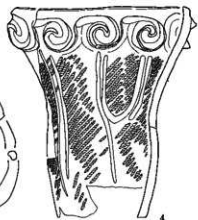
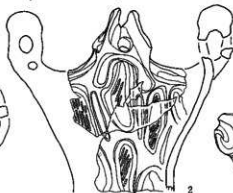
SK9069 (1)



SK9070 (1~6)



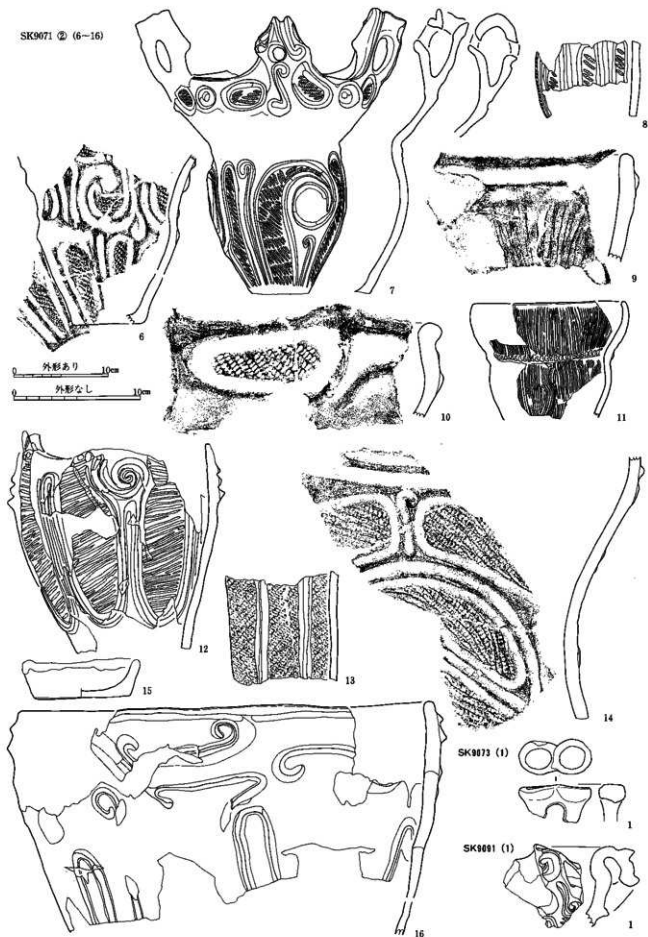
SK9071 (1~16) ① (1~5)



0 外形あり 10cm

0 外形なし 10cm

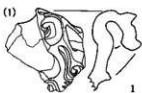
SK9071 ② (6-16)



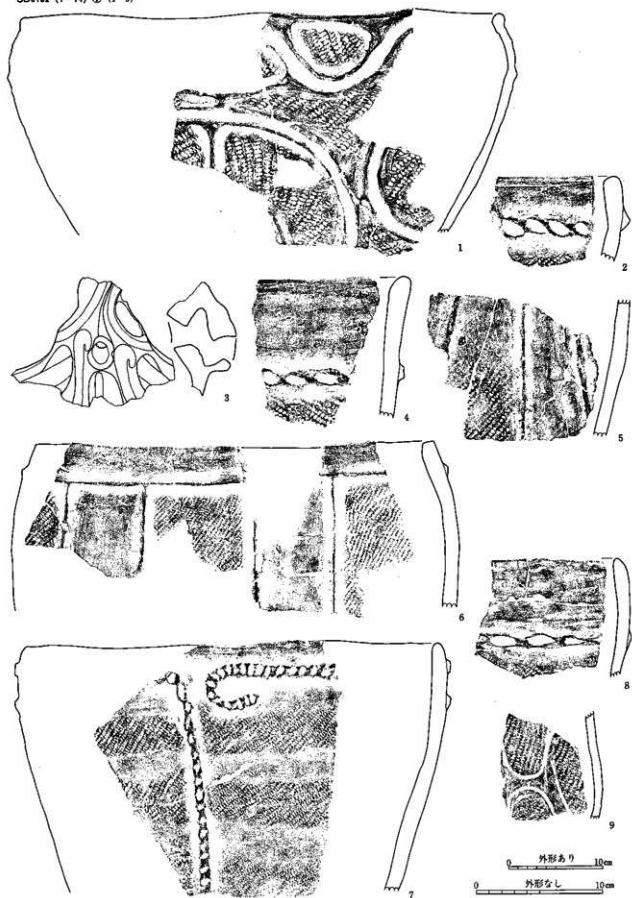
SK9073 (1)



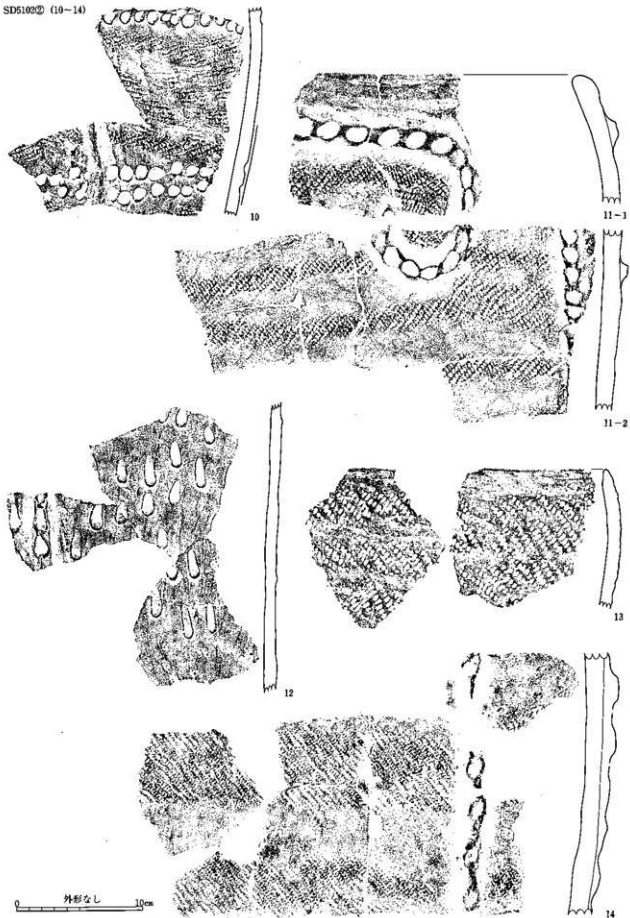
SK9081 (1)



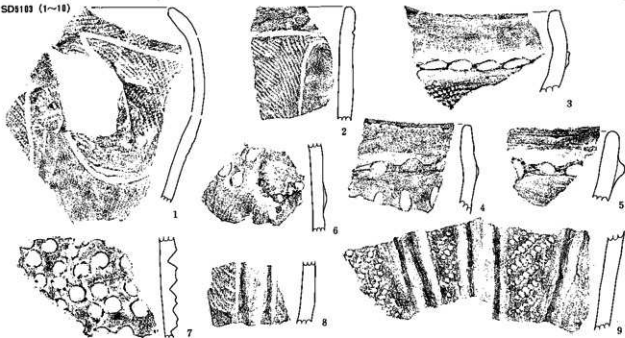
SD5102 (1~14) ① (1~9)



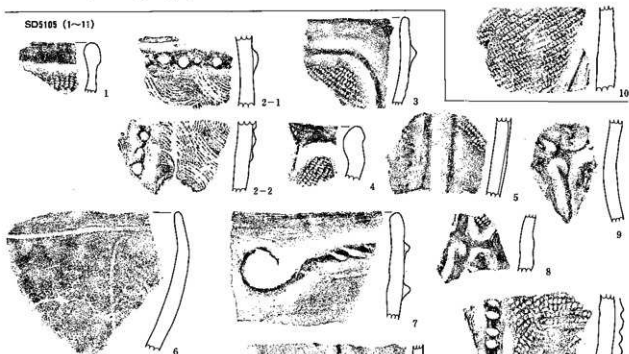
SD5102② (10-14)



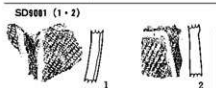
SD5103 (1~10)



SD5105 (1~11)



SD5081 (1・2)



SD5002 (1・2)



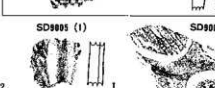
SD5003 (1)



SD5004 (1)



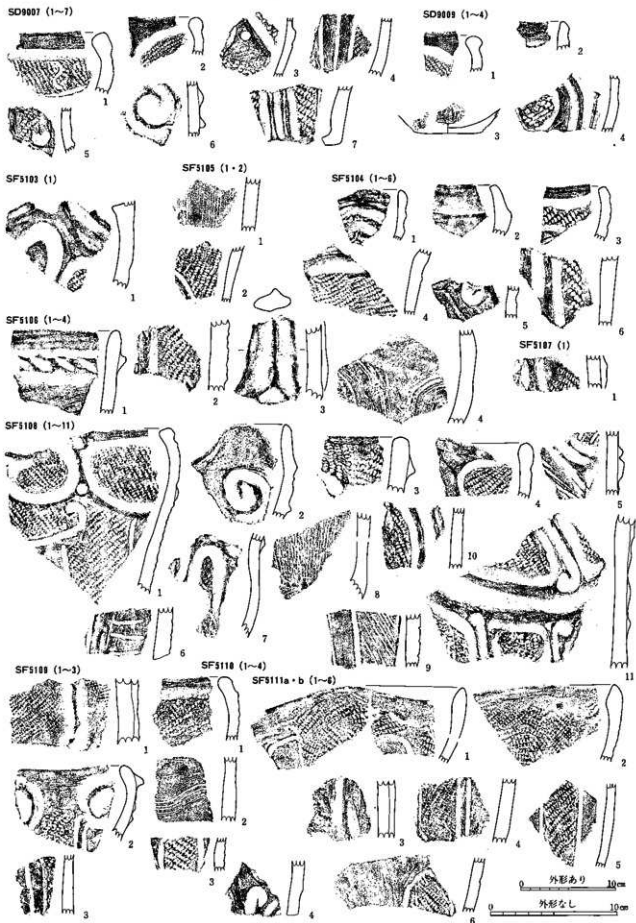
SD5005 (1)



SD5006 (1~3)



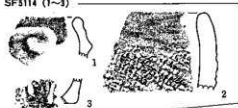
0 外形なし 10mm



SF5112 (1~8)



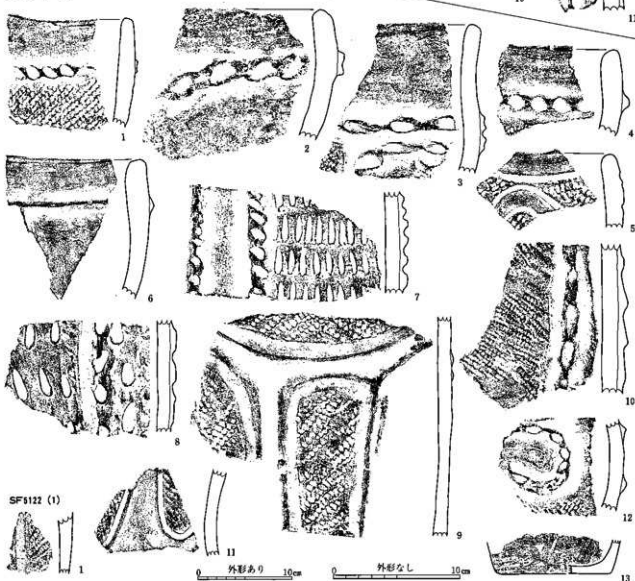
SF5114 (1~3)



SF5117 (1~11)



SF5118 (1~13)

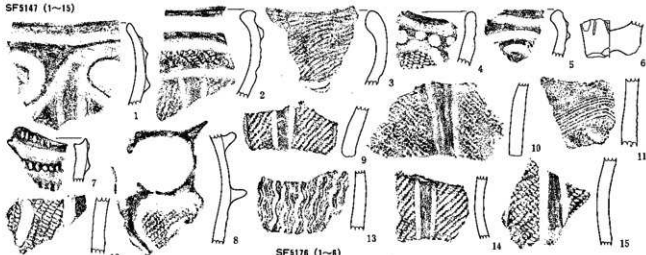


SF5122 (1)

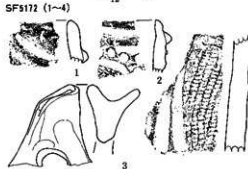


0 外形あり 10cm 0 外形なし 10cm

SF5147 (1~15)



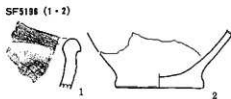
SF5172 (1~4)



SF5176 (1~6)



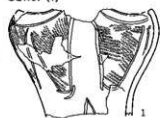
SF5188 (1~2)



SF9010 (1~2)



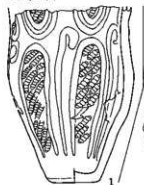
SQ4701 (1)



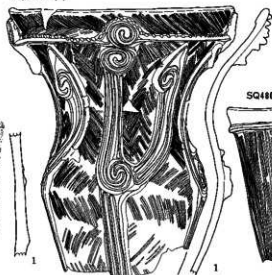
SQ4453 (1~2)



SQ4782 (1)



SQ4803a (1)



SQ4803b (1)

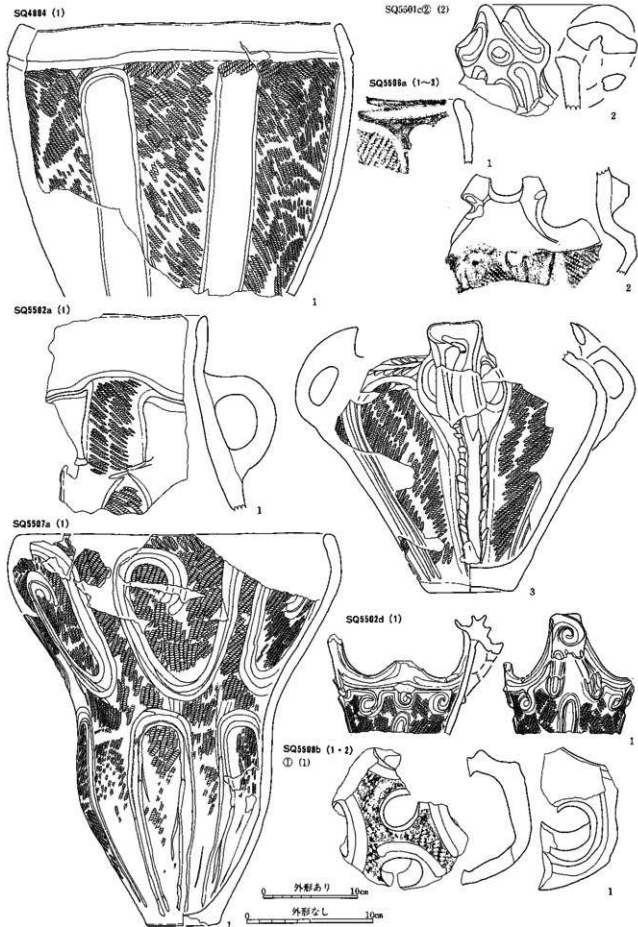


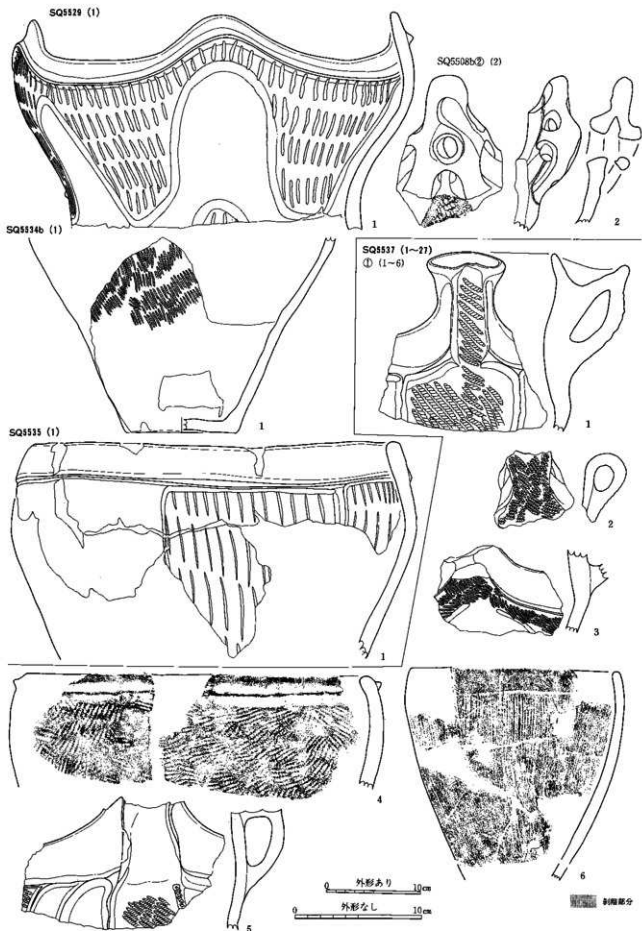
SQ5501c (1~2) ㊦ (1)



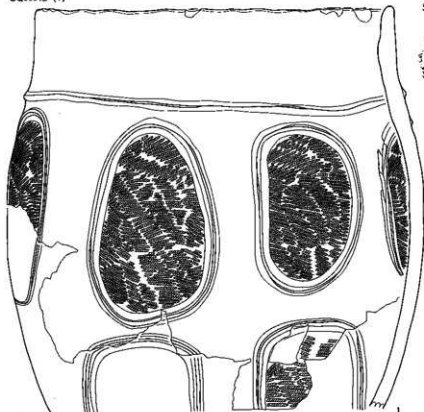
0 外形あり 10cm

0 外形なし 10cm

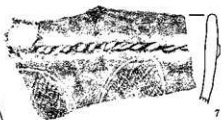




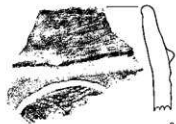
SQ5534a (1)



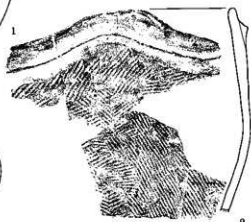
SQ5537② (7-10)



7

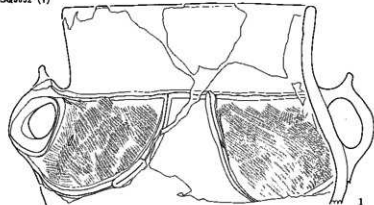


8



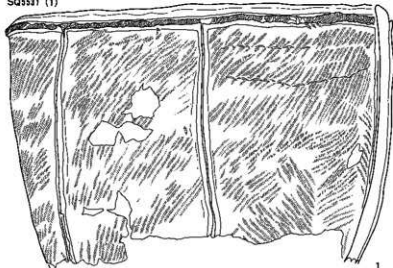
9

SQ5532 (1)

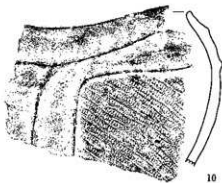


1

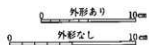
SQ5531 (1)



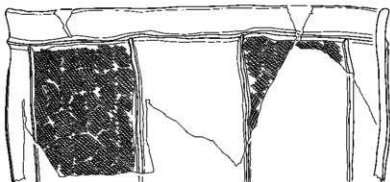
1



10



SQ5537① (11-20)



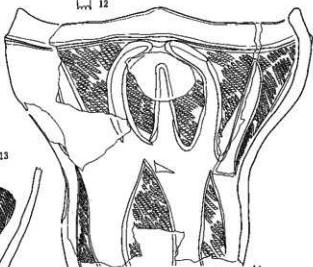
11



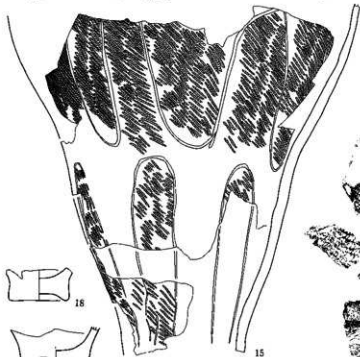
12



13



14



15



16



18



19



20

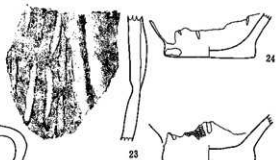
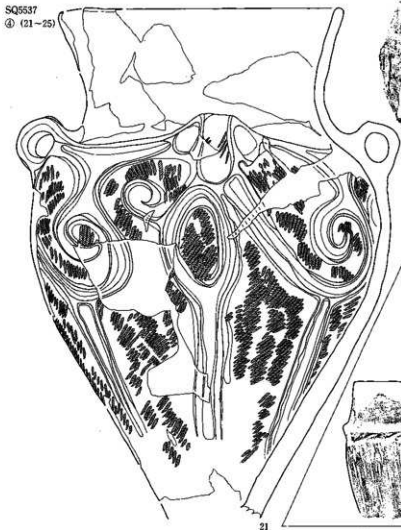
0 外形あり 10cm

0 外形なし 10cm



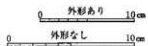
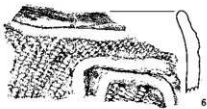
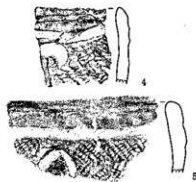
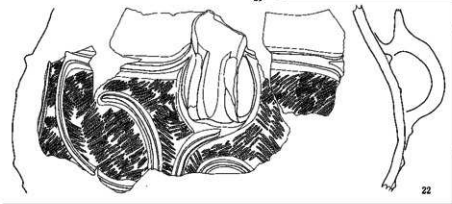
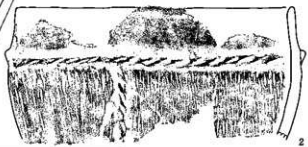
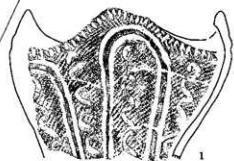
17

SQ5537
④ (21-25)



SQ5541 (1-17)

① (1-8)



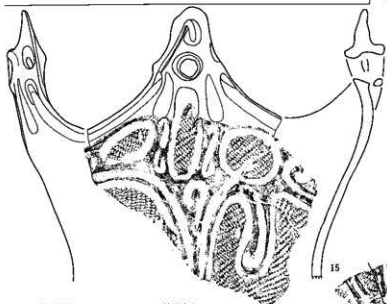
SQ5537㉔ (26・27)



26



27



26

0 外形あり 10mm 0 外形なし 10mm

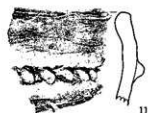
SQ5541㉔ (9-17)



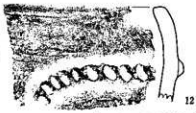
9



10



11



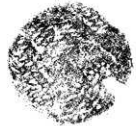
12



13



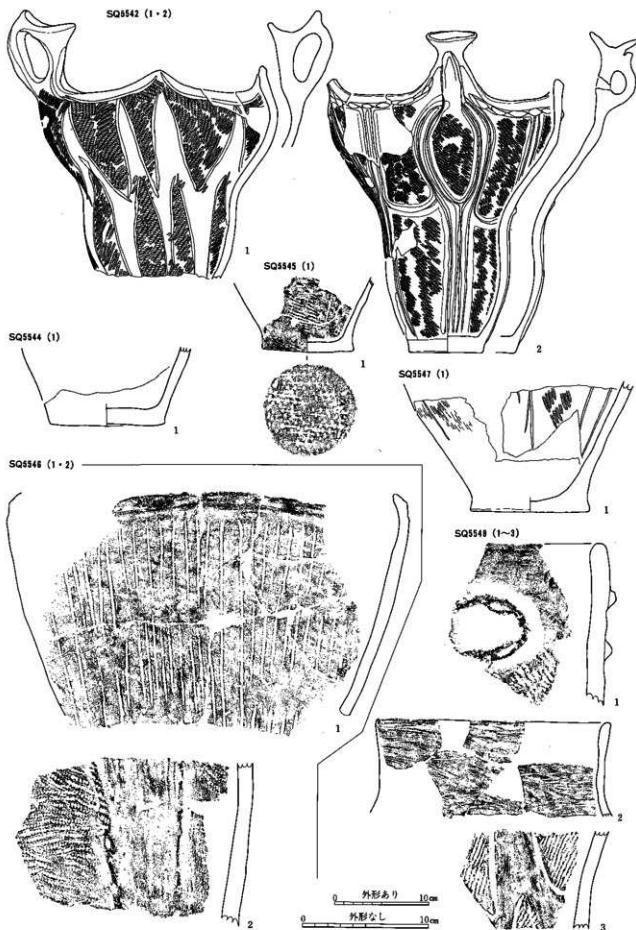
14

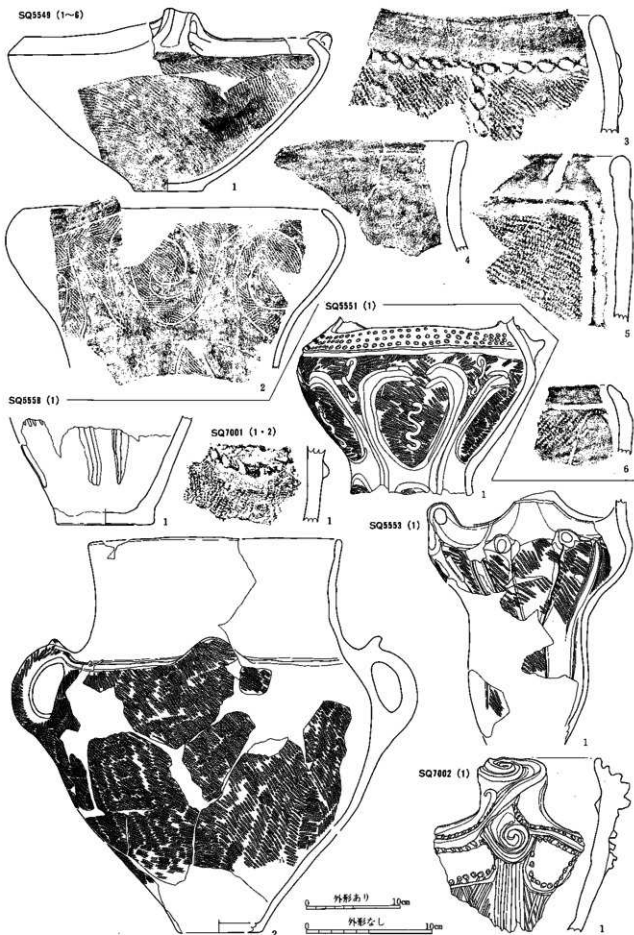


16

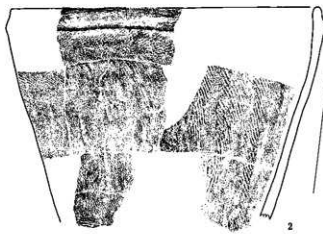


17

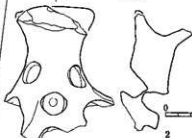
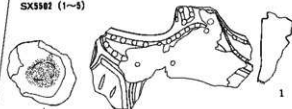




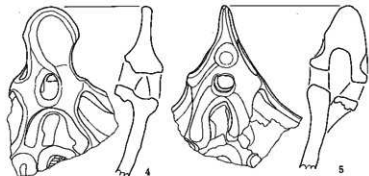
SH5101 (1・2)



SX5502 (1~4)



0 外形あり 10cm
0 外形なし 10cm

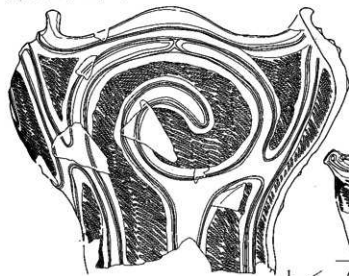


SX5506 (1・2)



遺物包含層出土土器

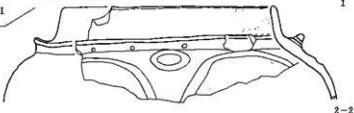
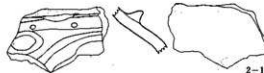
㊤g区W (1・2)・WS (1・2)

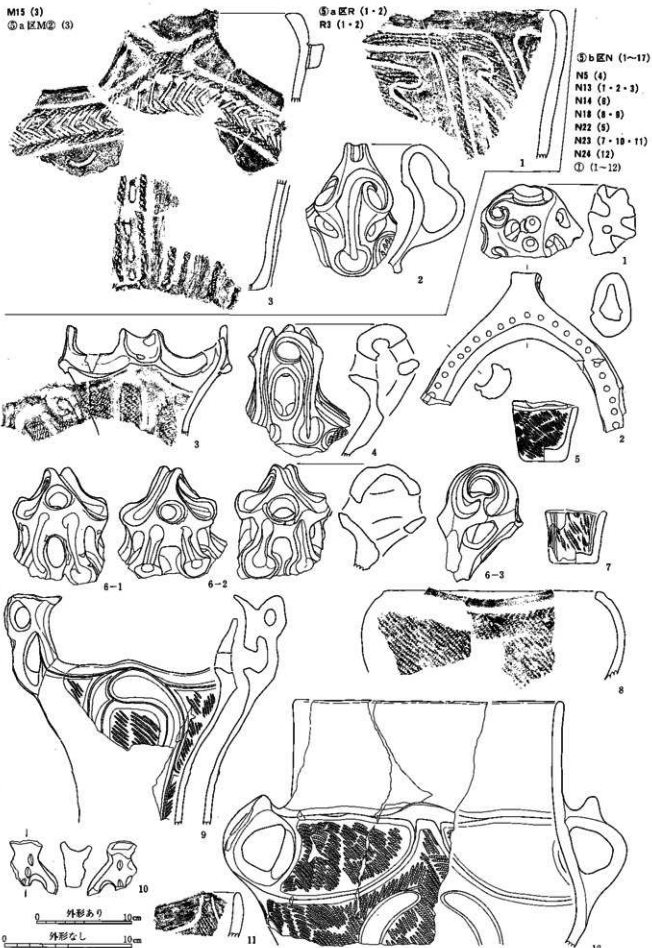


㊤g区X (1)・XS (1)



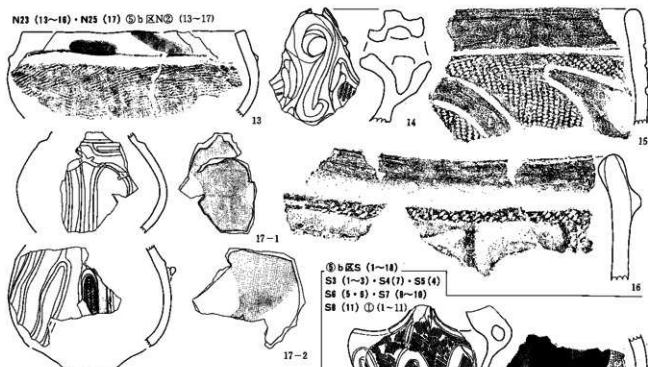
㊤a区M (1~3)・M24 (1)・M15 (2)
① (1・2)





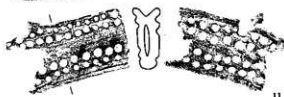
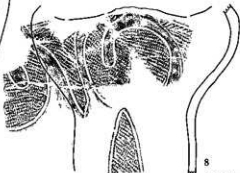
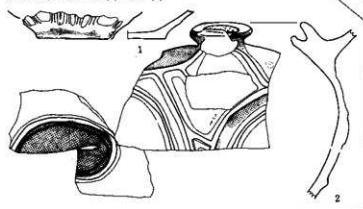
中期後葉の土器 132 (圖代遺跡群 ① a区M・R・② b区N)

N23 (13~16)・N25 (17) ㊦b区N㊦ (13~17)



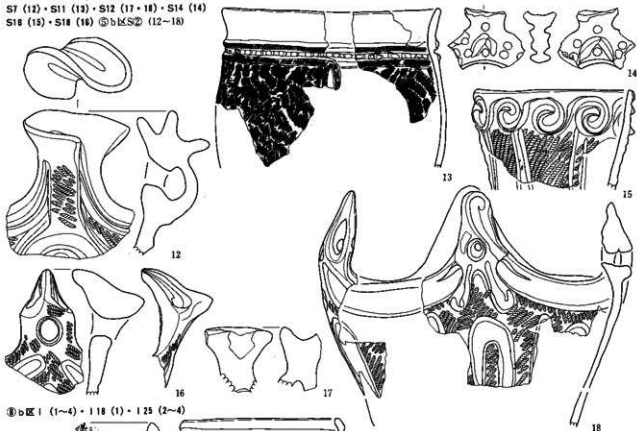
㊦b区S (1~18)
 S1 (1~3)・S4(7)・S5(4)
 S6 (5・8)・S7 (9~16)
 S8 (11) ㊦ (1~11)

㊦b区O (1・2)・O6 (1)・O11 (2)

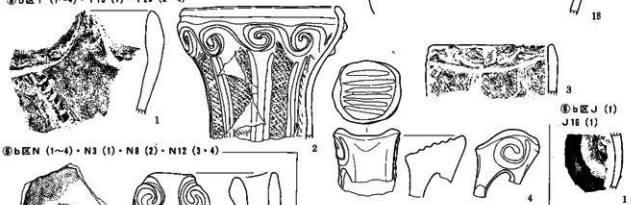


0 外形あり 10cm
 0 外形なし 10cm

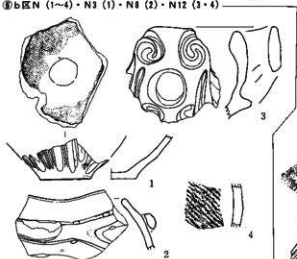
S7 (12)・S11 (13)・S12 (17・18)・S14 (14)
S16 (15)・S18 (16) ㊦b区S② (12-18)



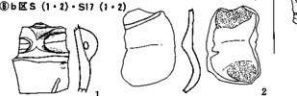
㊦b区I (1~4)・I18 (1)・I25 (2~4)



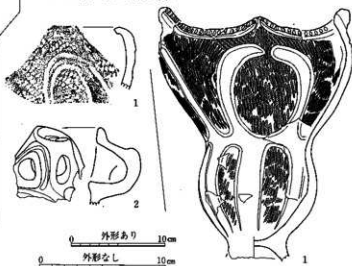
㊦b区N (1~4)・N3 (1)・N8 (2)・N12 (3・4)



㊦b区S (1・2)・S17 (1・2)

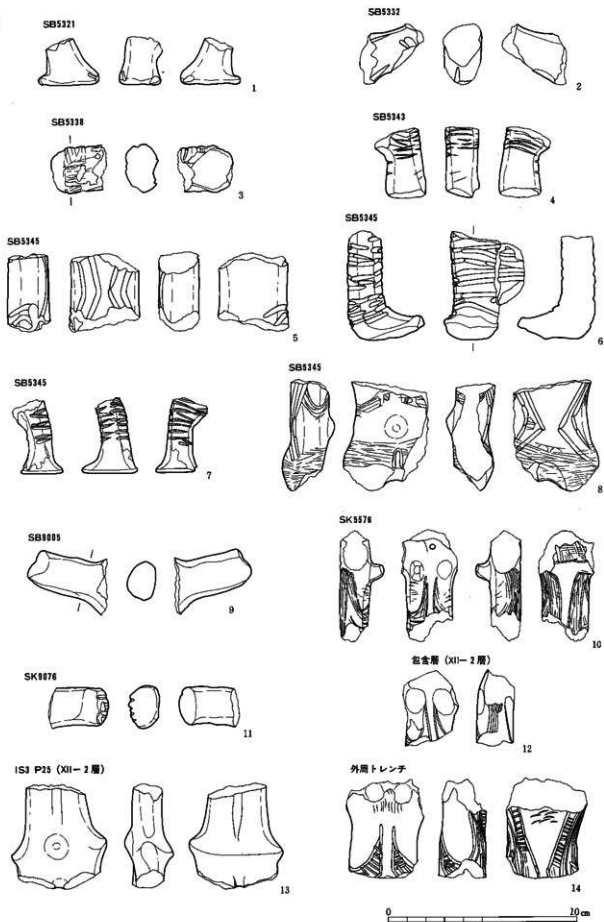


銅室区ビット (1・2)
N18ビット7 (1)・S3ビット61 (2)



0 外形あり 10cm
0 外形なし 10cm

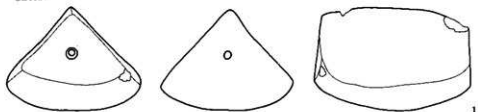
土偶



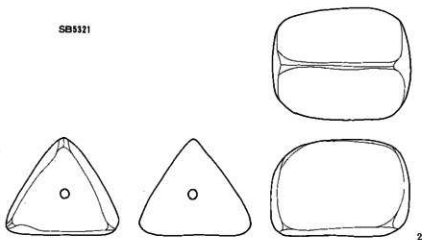
中期後葉の土偶 (埴代遺跡群 SB・SK・包含層)

土製品ほか

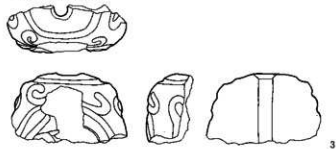
三角塔形土製品
SB9324



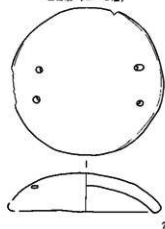
SB9321



有孔球状土製品
包含層 (XI-2層)



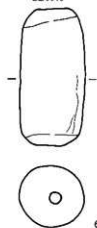
土製蓋
包含層 (XI-2層)



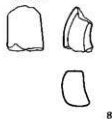
土製円盤
包含層 (XI-2層)



土壺
SB9319



不明土製品
SD9902

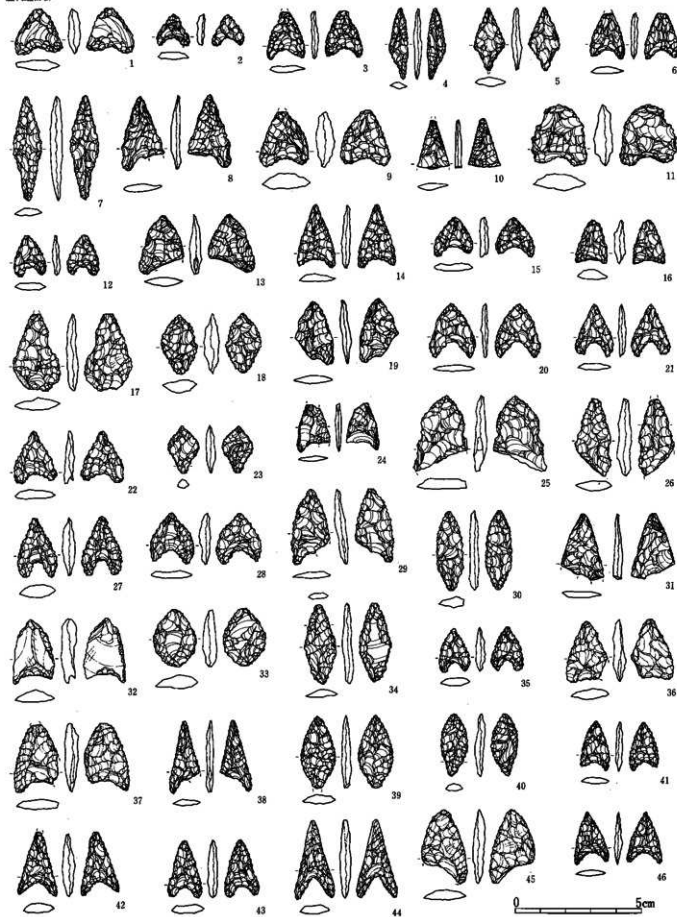


小形土版
SB9903

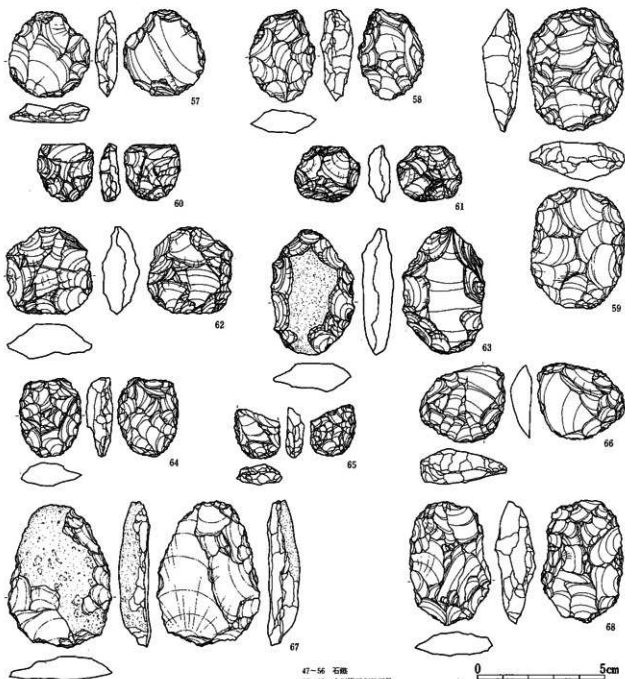
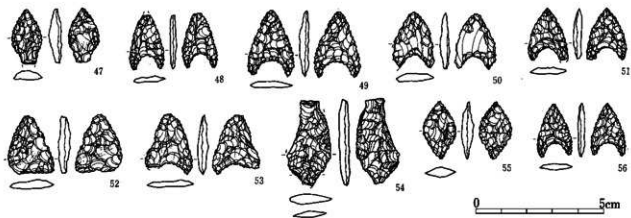


XII-2層 石器

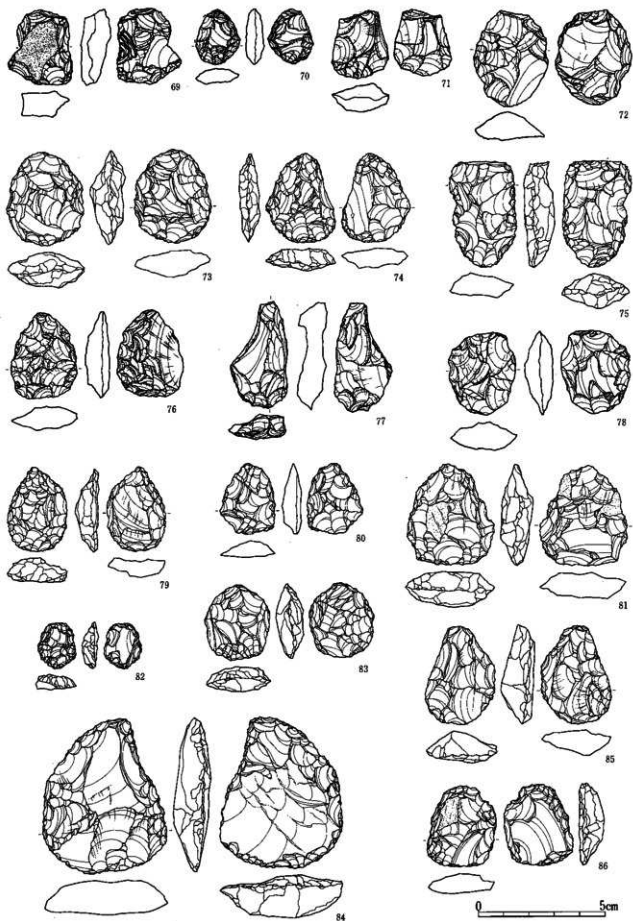
尾代遺跡群



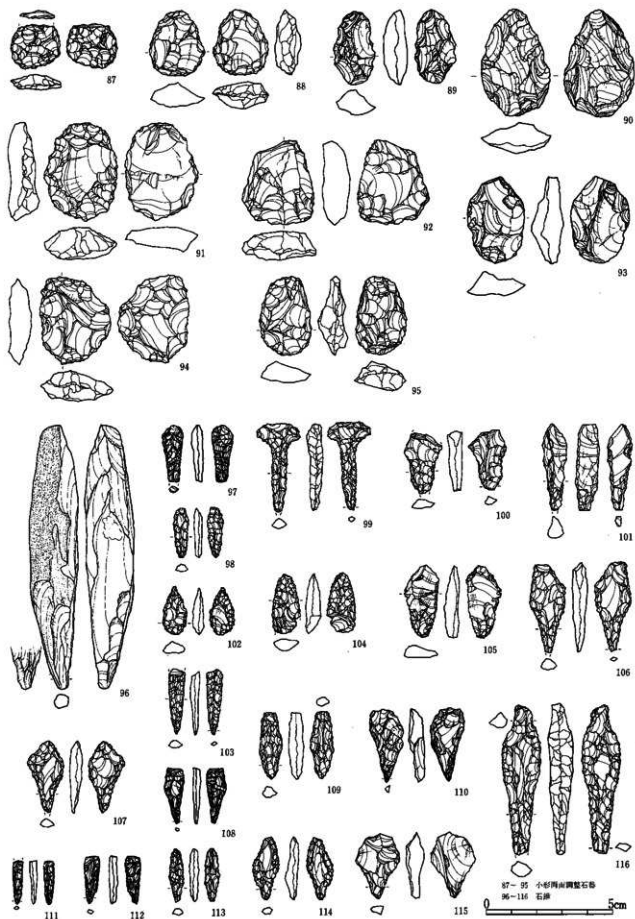
中期後葉の石器 1 (尾代遺跡群 石画)



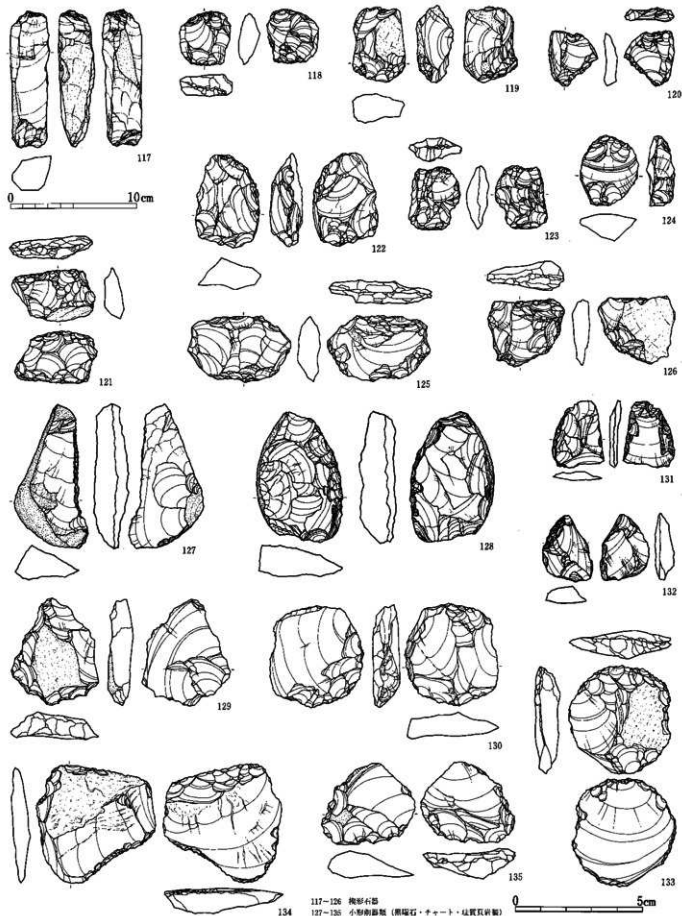
47-56 石楯
57-68 小形両面割型石楯



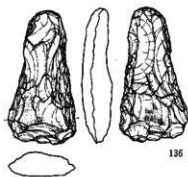
中期後葉の石器 3 (原代遺跡群 小形両面割製石器)



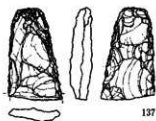
中期後葉の石器 4 (用代遺跡群 小形両面調整石器・石鏃)



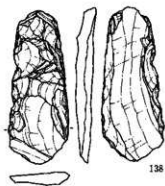
中期後葉の石器 5 (層代通群群 模形石器・小形割器類)



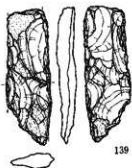
136



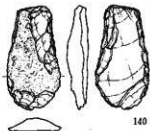
137



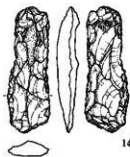
138



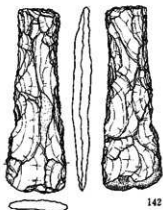
139



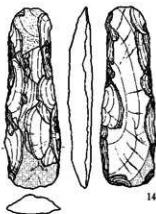
140



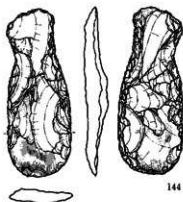
141



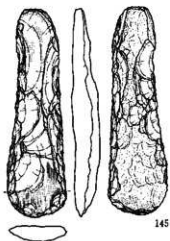
142



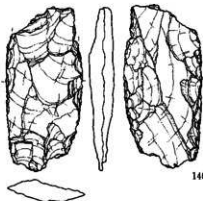
143



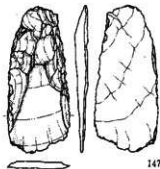
144



145

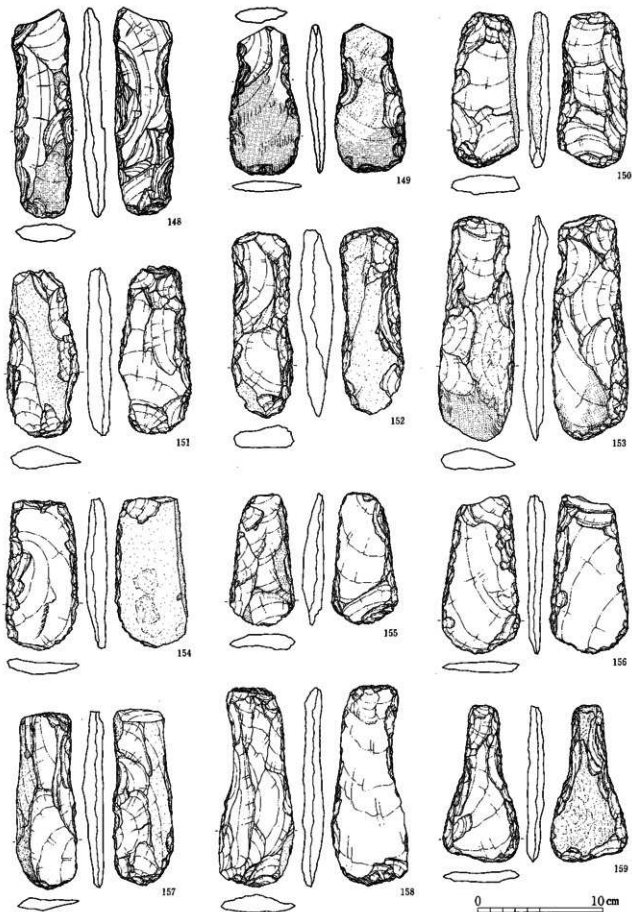


146

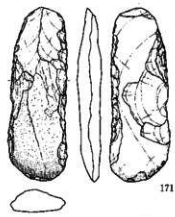
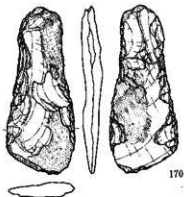
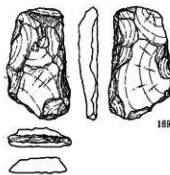
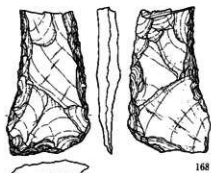
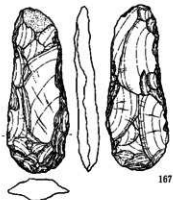
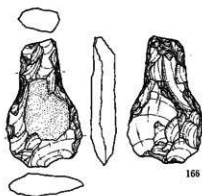
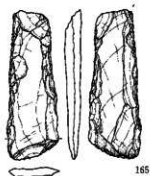
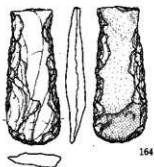
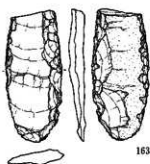
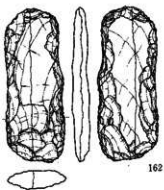
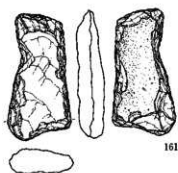
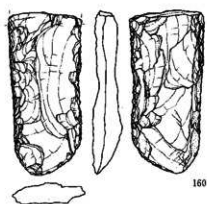


147

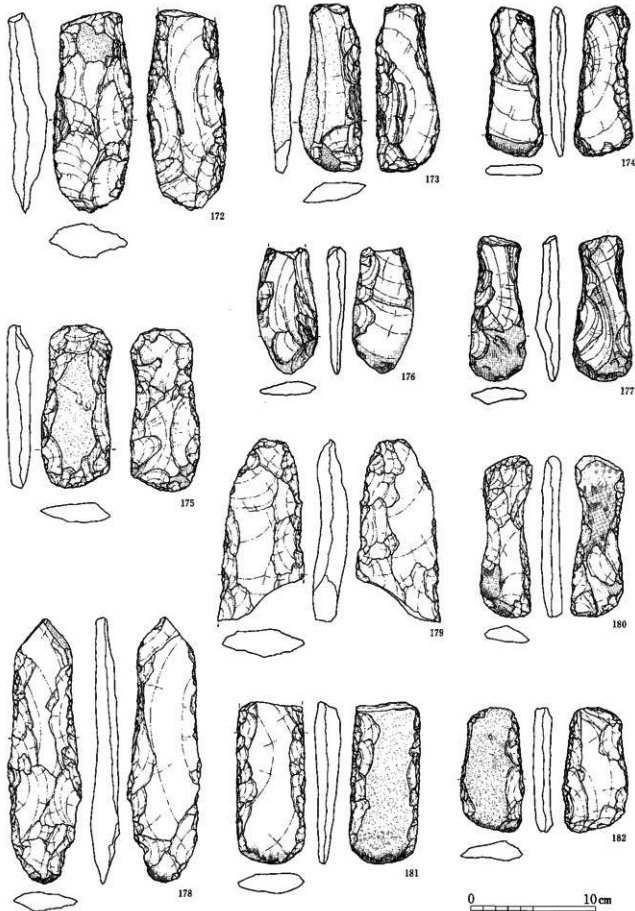
0 10cm



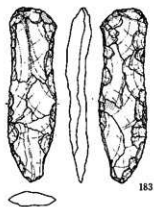
中期後葉の石器 7 (函代遺跡群 打製石片2)



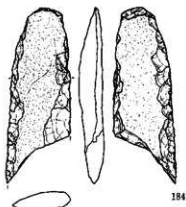
0 10 cm



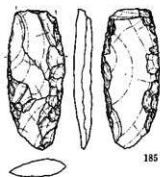
中期後葉の石器 9 (黒代遺跡群 打製石斧4)



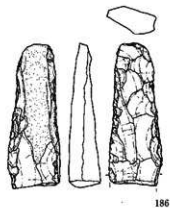
183



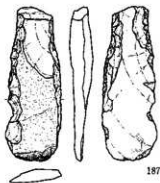
184



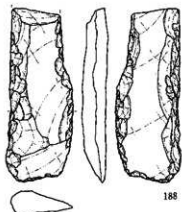
185



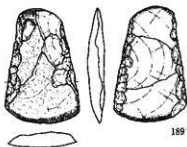
186



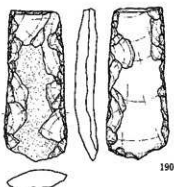
187



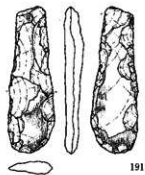
188



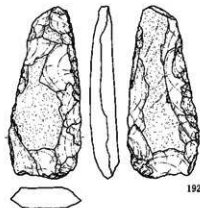
189



190



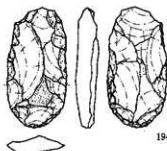
191



192

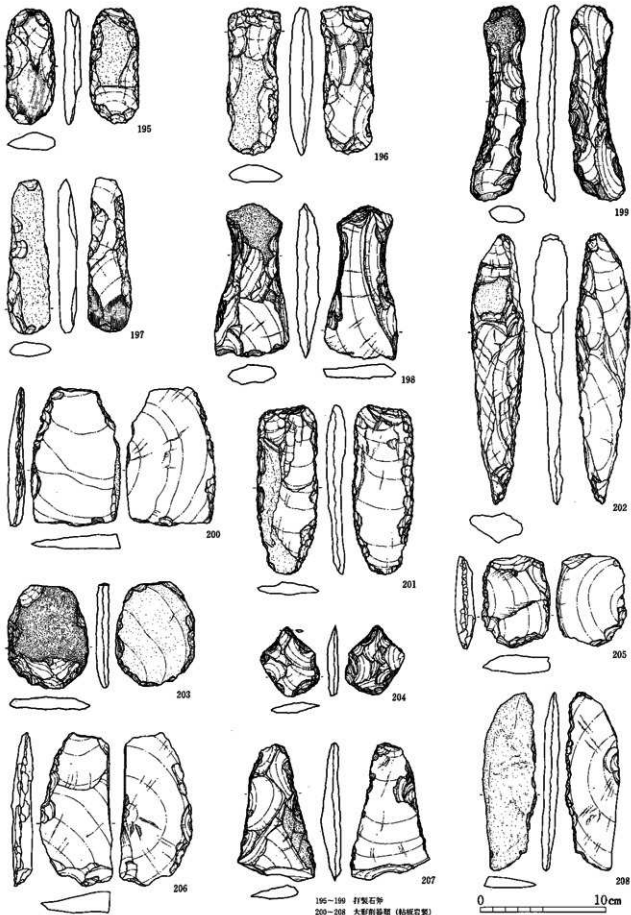


193

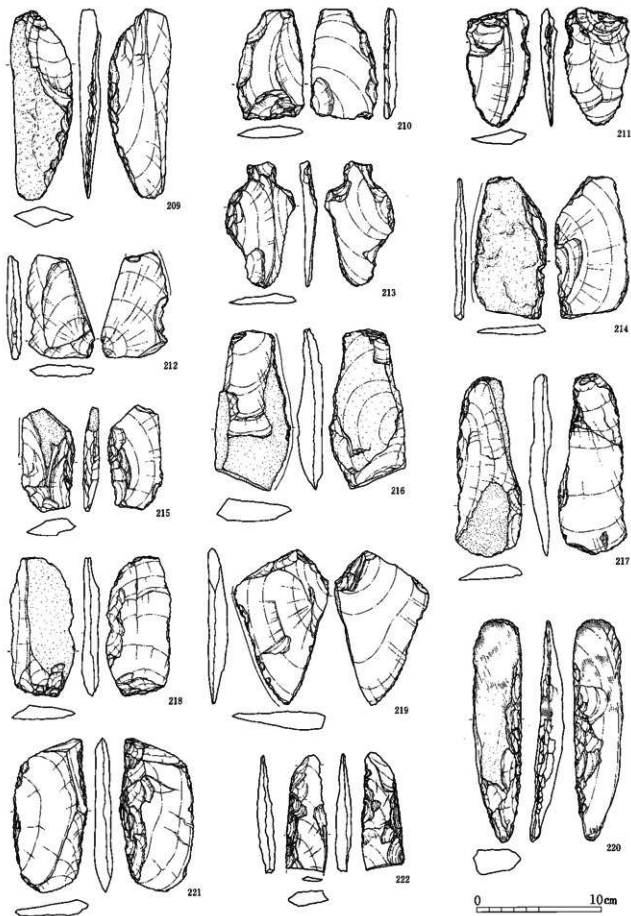


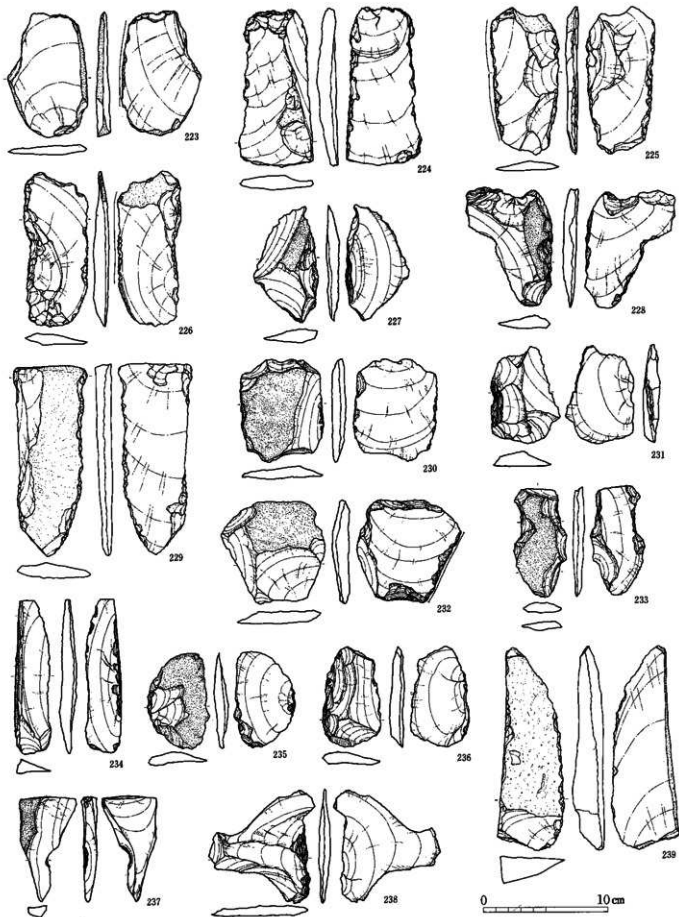
194



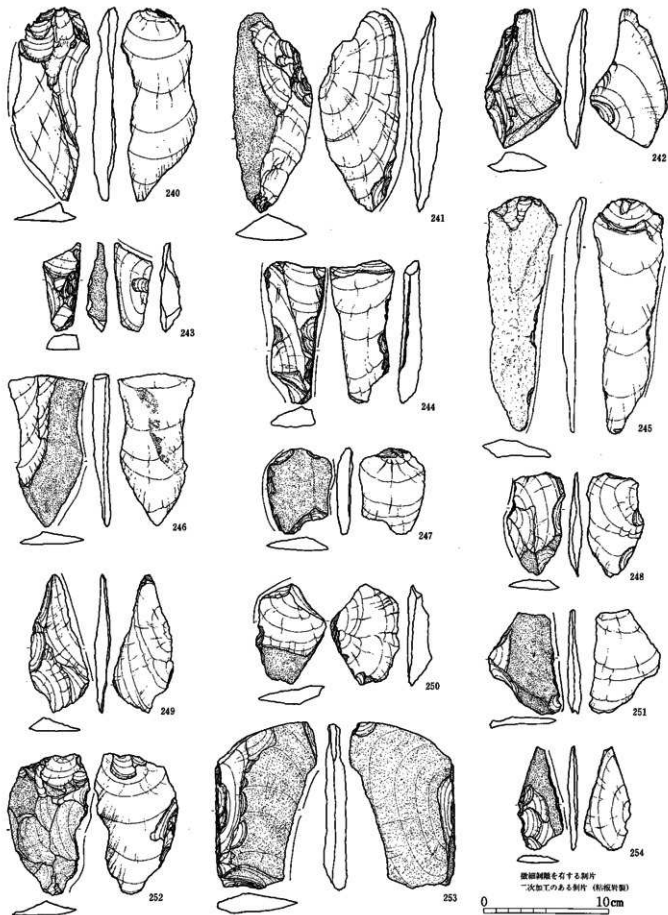


中期後葉の石器 11 (塚代遺跡群 打製石斧6・大形割縁器)

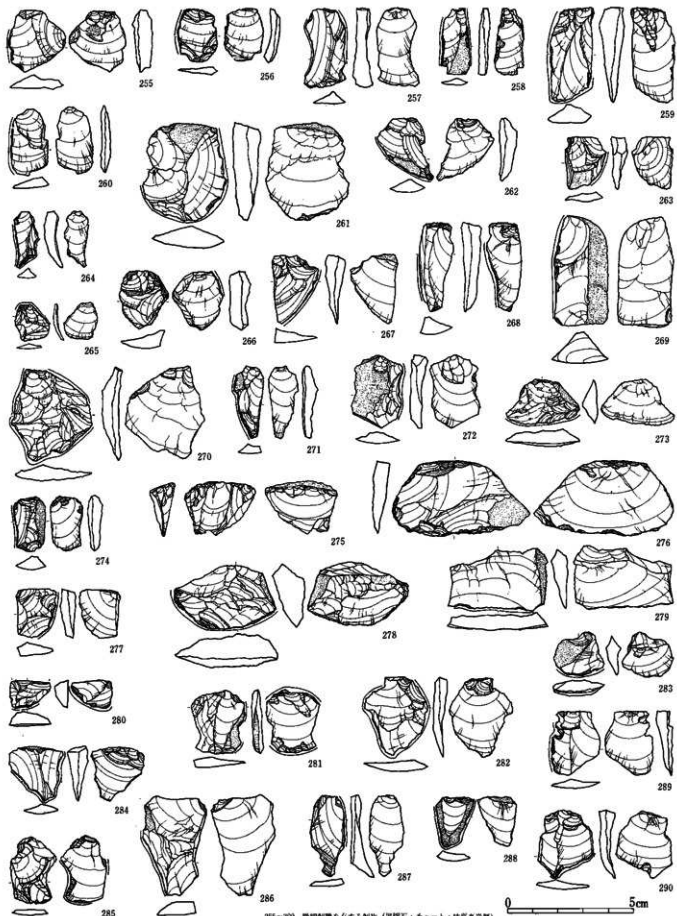




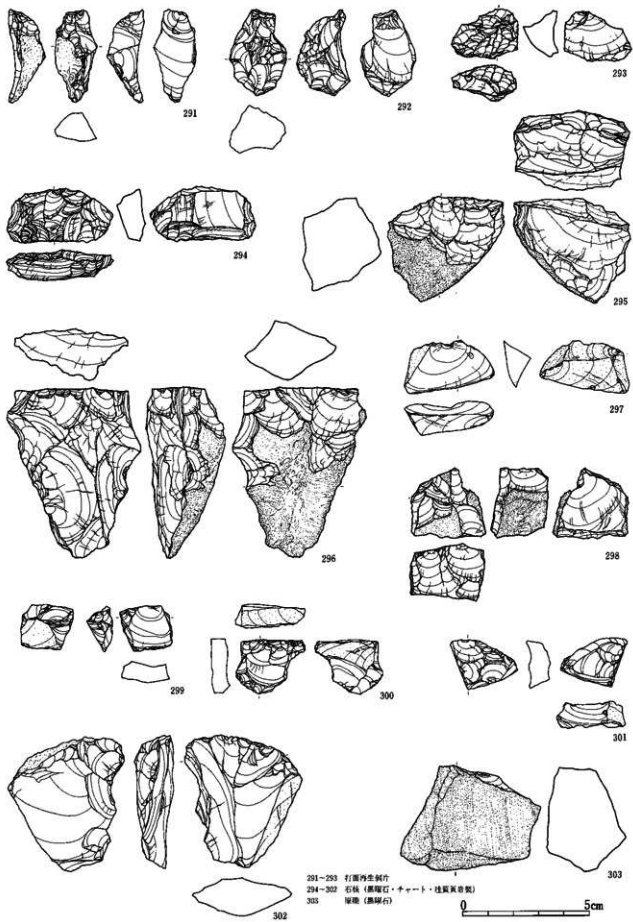
中期後葉の石器 13 (原代遺跡群 大形削器類)



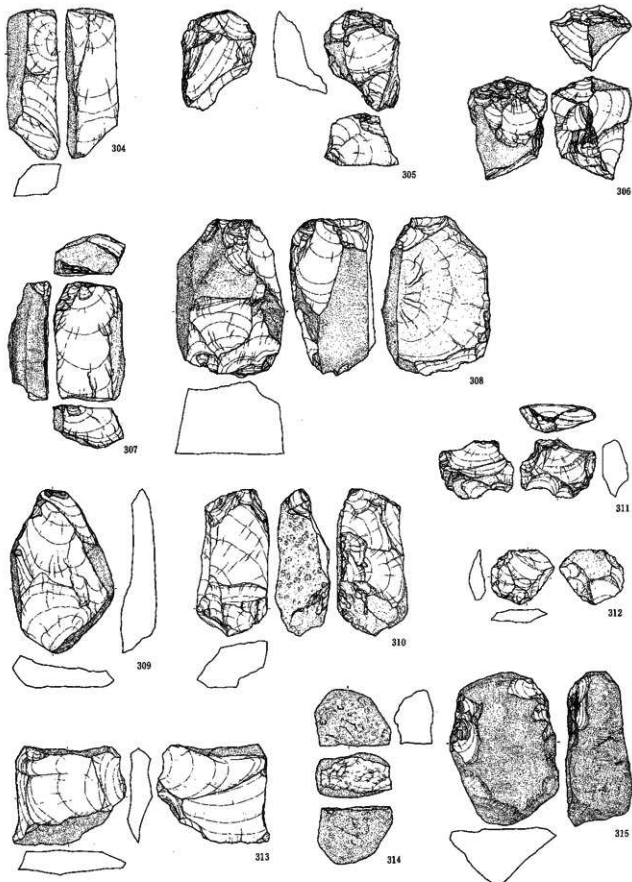
中期後葉の石器 14 (屈代遺跡群 微細刻線を有する剥片)



255-290 微細刻線を有する剥片 (黒輝石・チャート・柱状黒岩質)

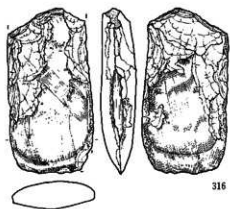


291-293 打面再生製片
 294-302 石核 (黒曜石・チャート・桂葉頁岩製)
 303 燧石 (黒曜石)

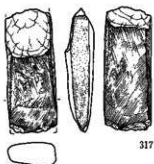


304 剥片 (粘板岩製)
 305-313 石核 (粘板岩・カラス真安山石製)
 314・315 分製核・初期石核

0 10 cm



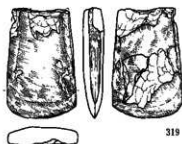
316



317



318



319



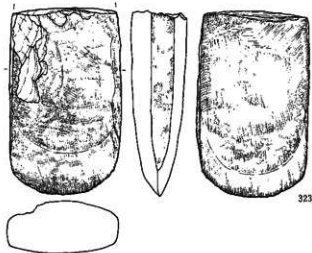
320



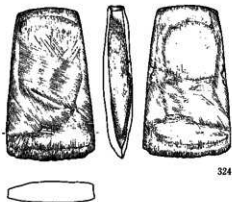
321



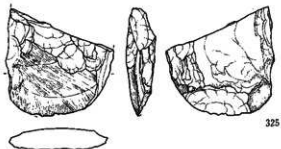
322



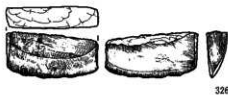
323



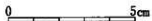
324

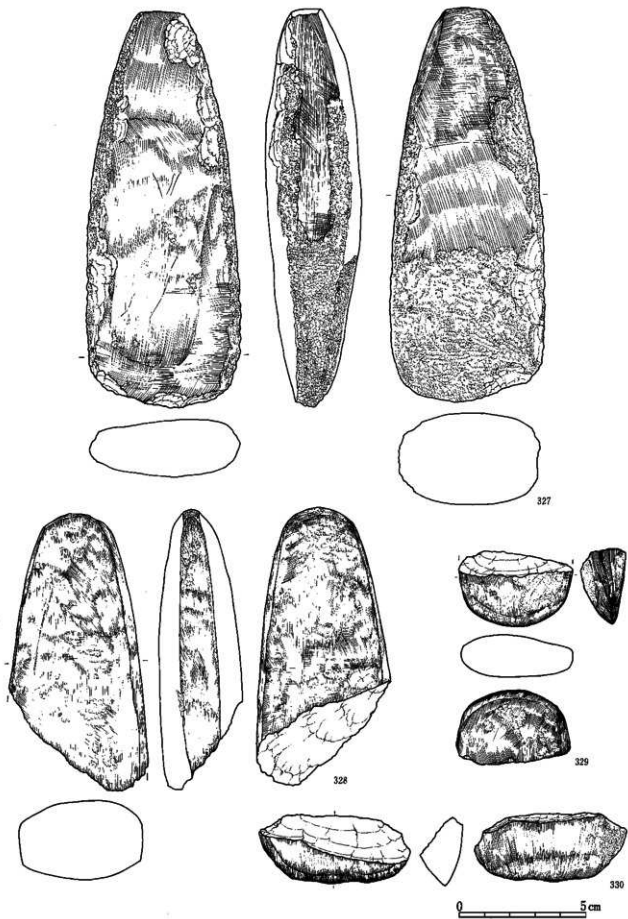


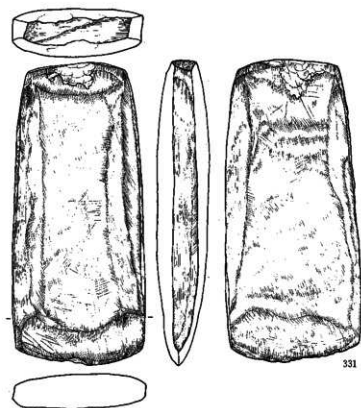
325



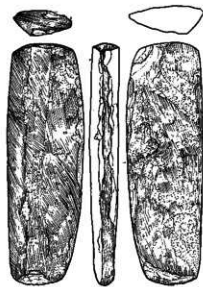
326







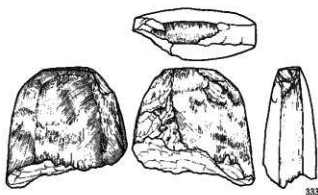
331



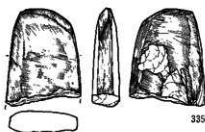
332



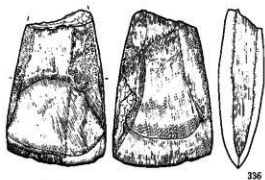
334



333



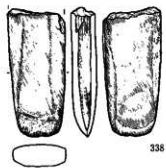
335



336

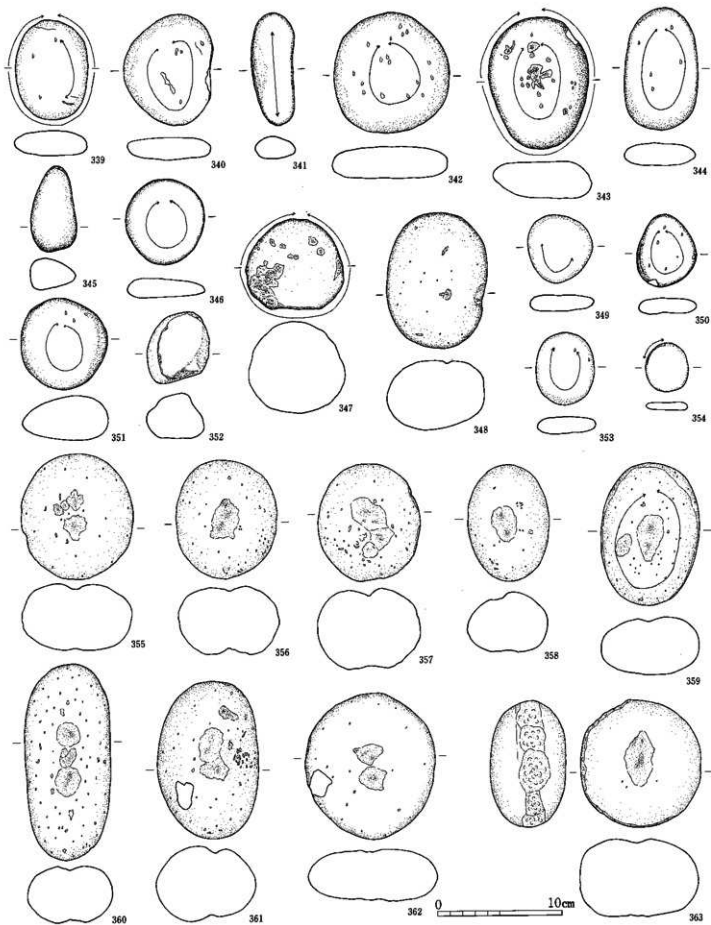


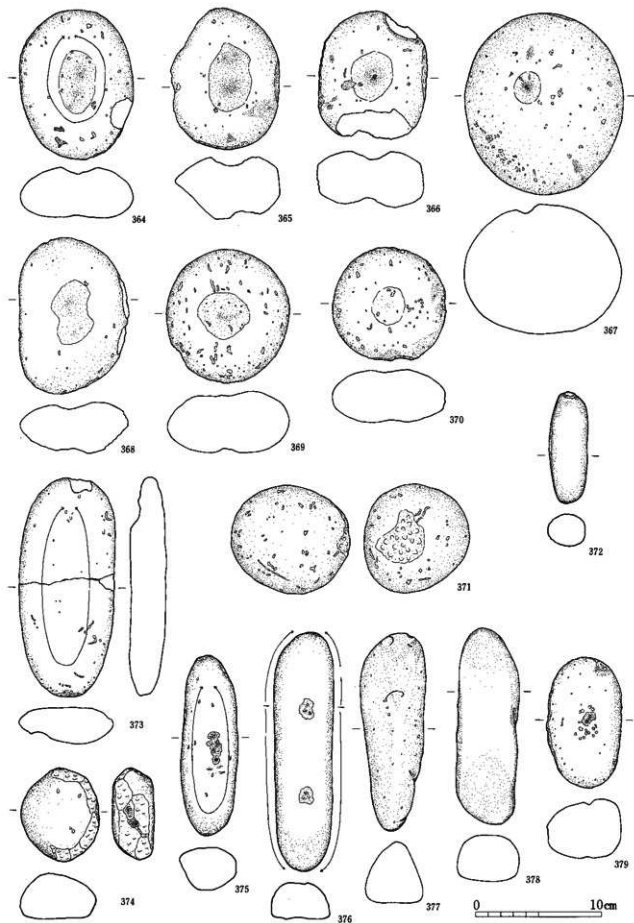
337

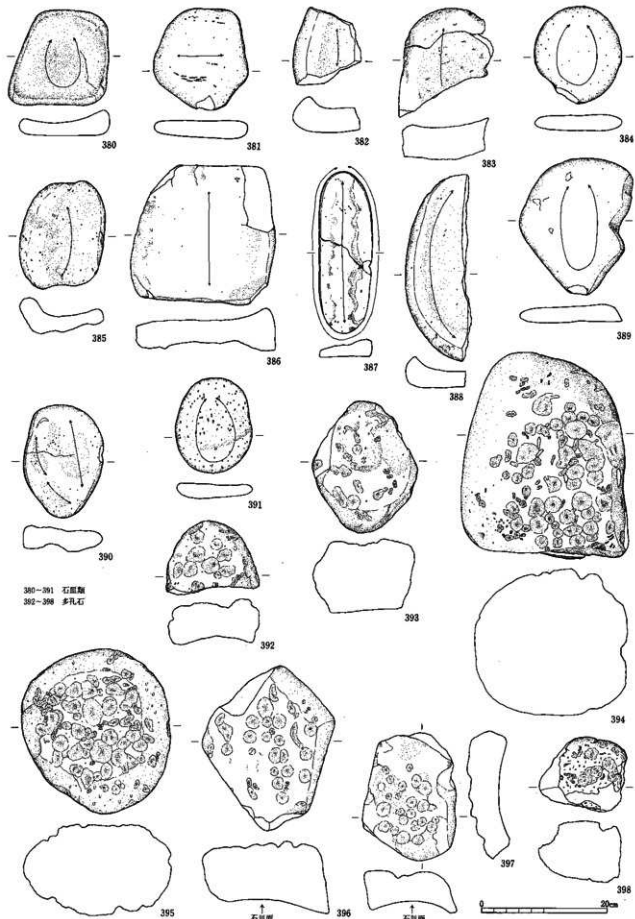


338

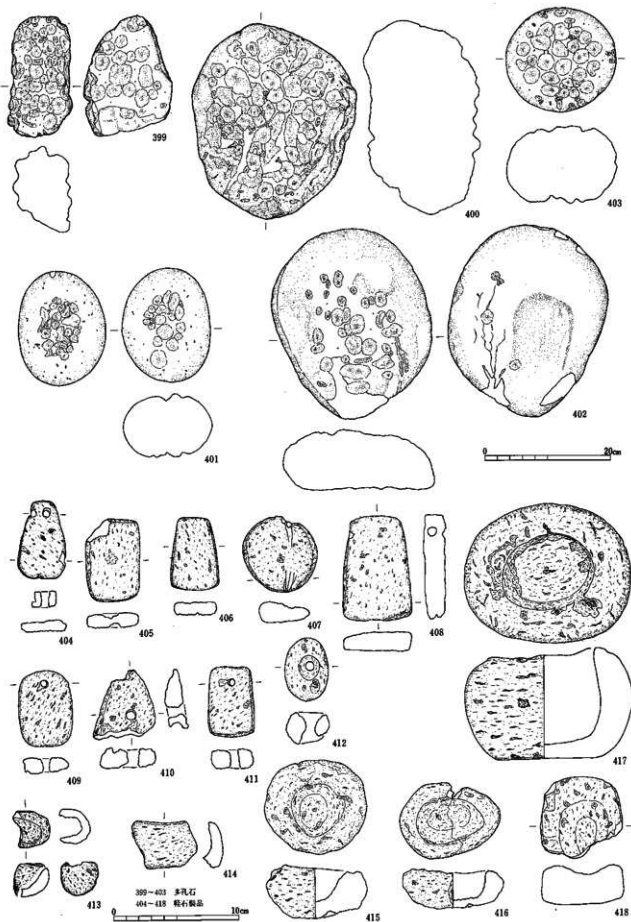


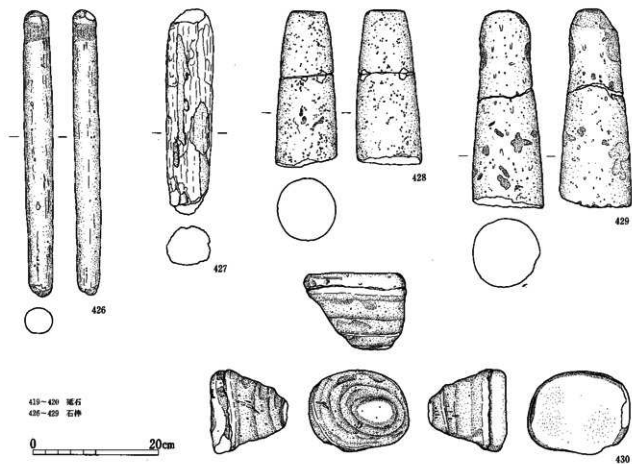
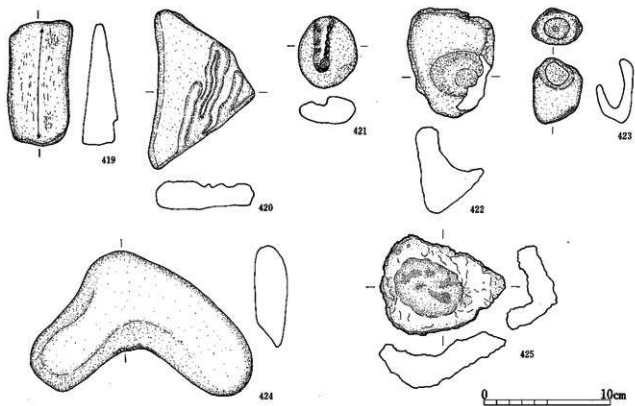




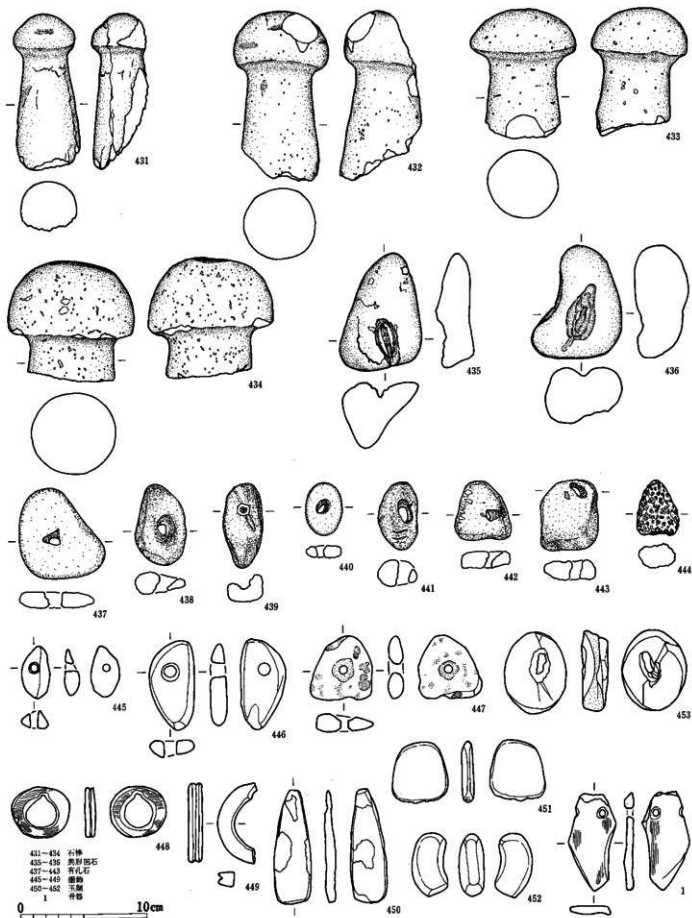


380-391 石皿類
392-398 多孔石





419-420 燧石
426-429 石棒

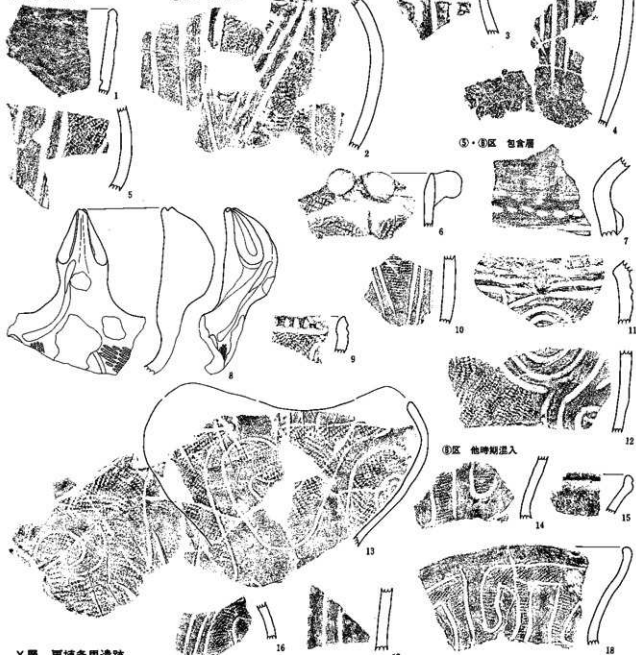


XII-1層 更埴糸里遺跡

I地区 SF803

歴代遺跡群

①区 SF7005



⑤・⑧区 包含層

③区 他時期混入

X層 更埴糸里遺跡

J地区 SQ1009

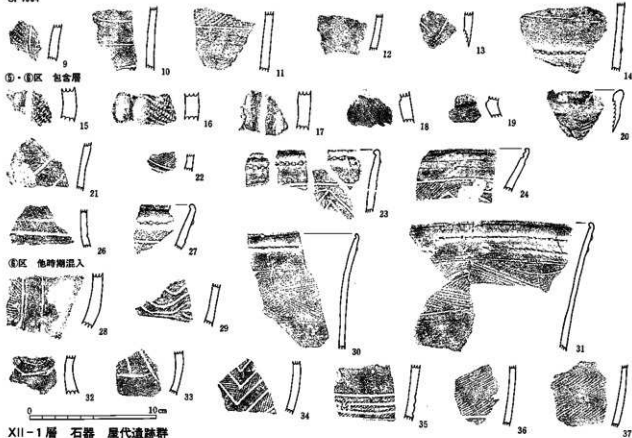


歴代遺跡群

④区 SK4784

SK4785

SF4584

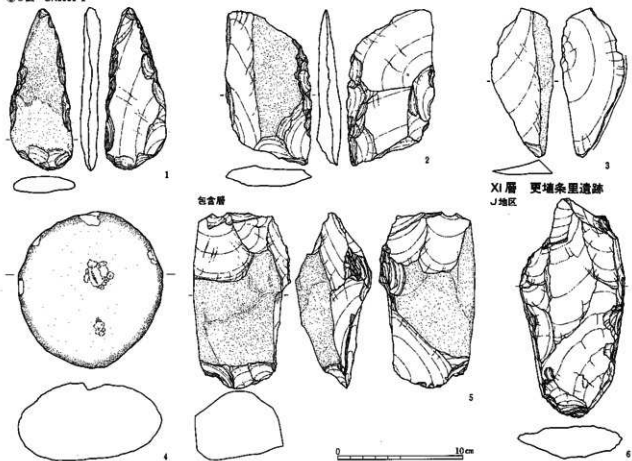


⑤・⑥区 包含層

⑧区 他時期混入

XII-1層 石器 屢代遺跡群

⑨b区 SK5589-2



包含層

XI層 更埴系屢遺跡
J地区

後期前葉の土器 2、後期前葉の石器 1

X層石器 更埴糸里遺跡

J地区 SF1821



SQ1888

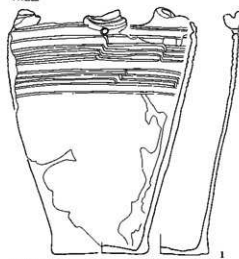


SF1821



IX層 更埴糸里遺跡

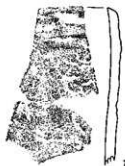
A地区



C地区 SK2038



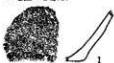
I地区 包含層



IX層上面 更埴糸里遺跡

E地区 SQ487

包含層



VIII層 更埴糸里遺跡

H地区 SF781



SF783



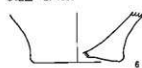
SF784



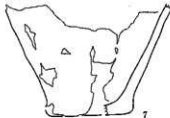
I地区 SF803



J地区 SF1001



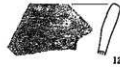
SF1821



F地区 SQ881



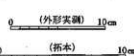
SQ883



SQ885

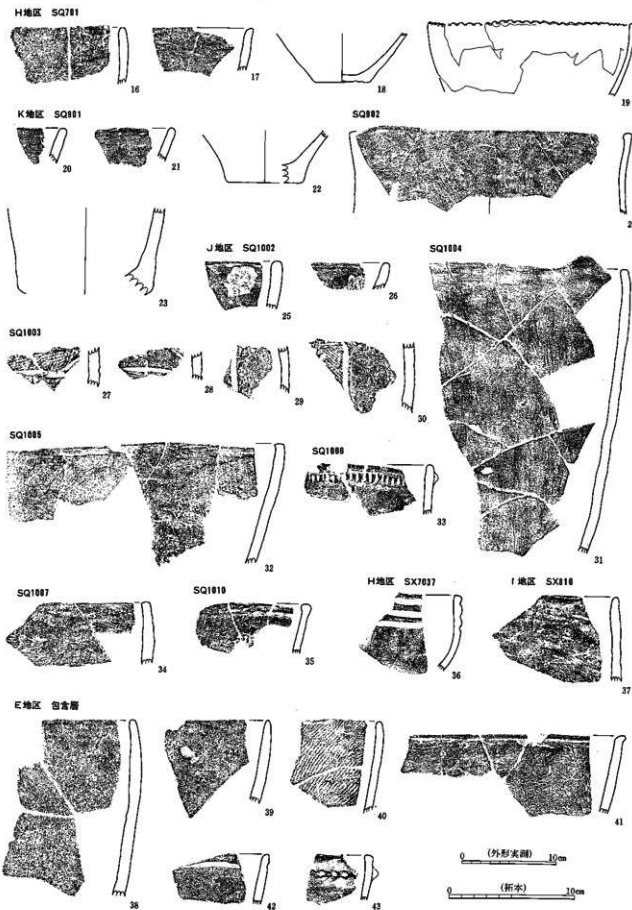


SQ886

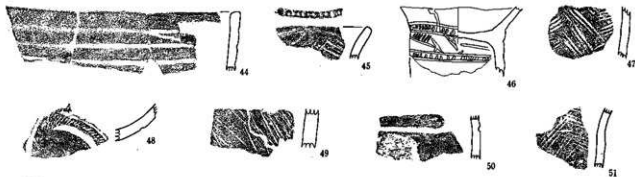


0 (外形実測) 10cm

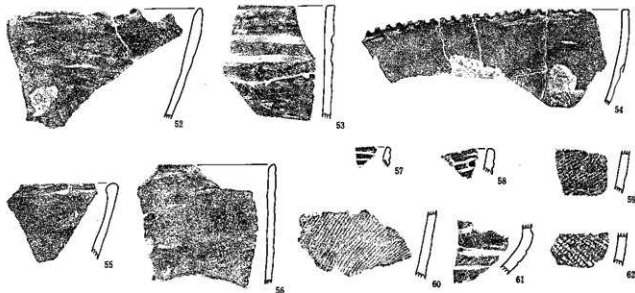
0 (拓本) 10cm



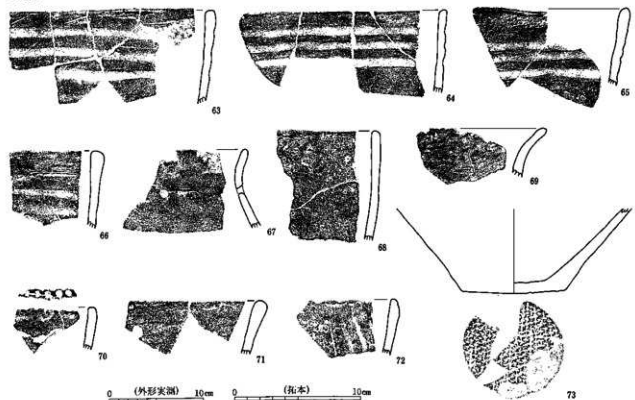
E地区包舍層 (2)

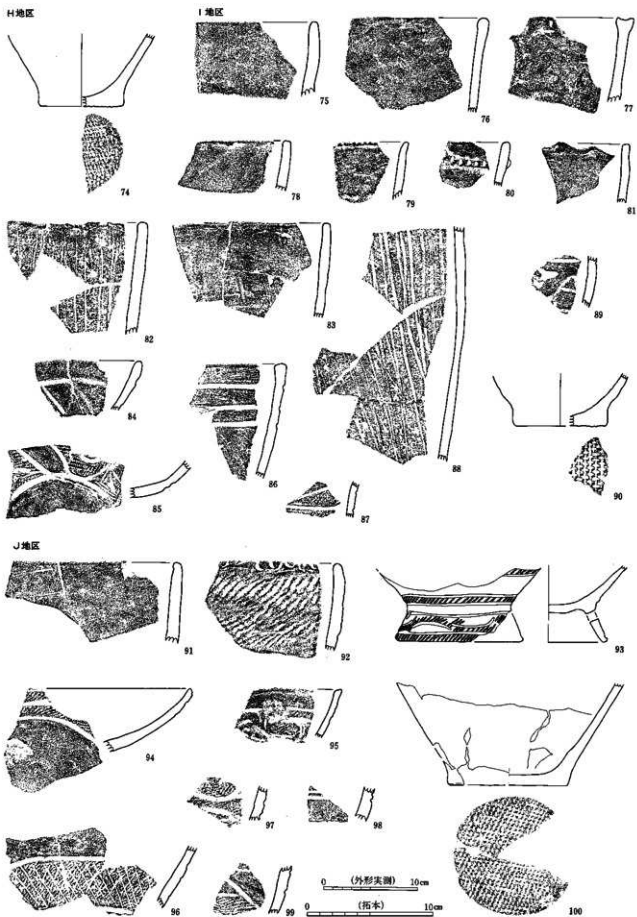


F地区



H地区

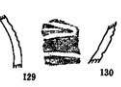
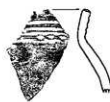
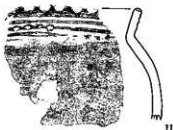
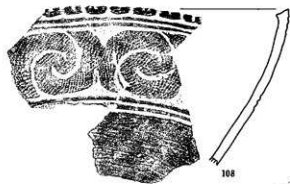
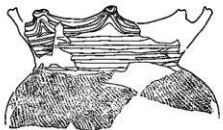




Ⅶ層 屋代遺跡群 他時期混入 更埴糸屋遺跡・屋代遺跡群

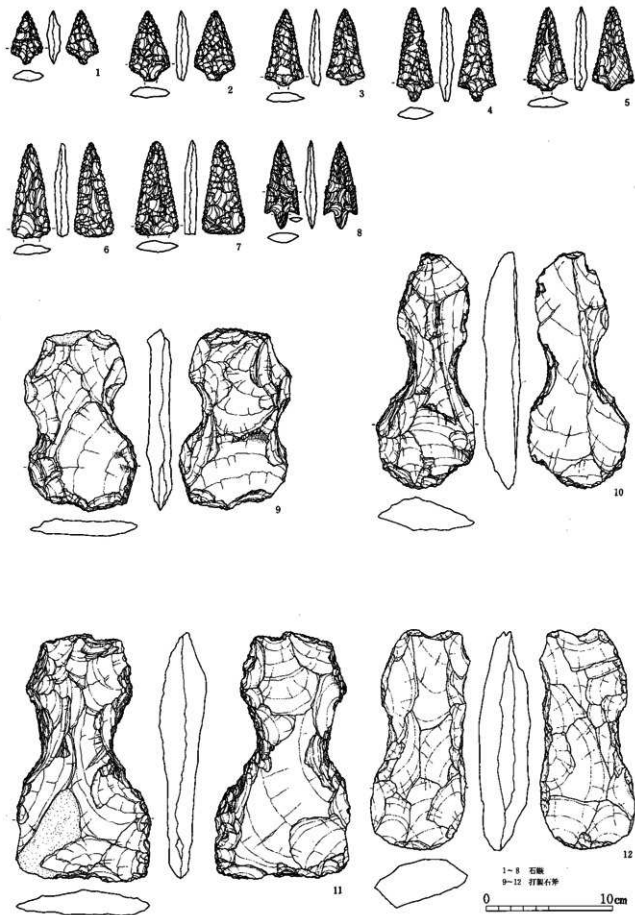
H地区SK7023

⑤・⑥区 魚

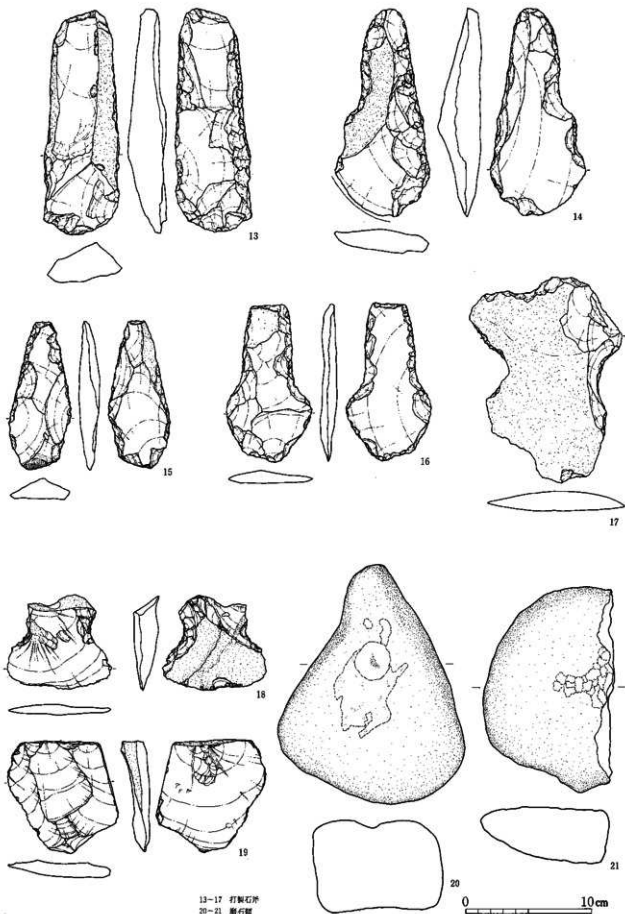


113・115は更埴糸屋遺跡G・E区
その他は屋代遺跡群⑤・⑥区

0 (外形実測) 10cm 0 (拓本) 10cm



晩期の石器 1 (肥後県里道跡 石鏃・打製石矛)



13-17 打製石斧
20-21 磨石錠

写真図版

(PL)



梅雨明けのなかった夏、1993年。私達は地表下4mにいた。
(屋代遺跡群Ⅱ-2層面)

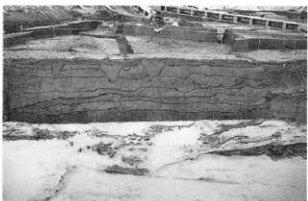
遺跡全景



XVI層・XV層
検出遺構

前期
層代遺跡群
⑤・⑥区

左：⑤b区深掘り断面
右：XVI層検出遺構
(⑥b区)



中期前葉1期

左：XV層検出遺構
(⑤a区)

右：SK6916
人骨出土状況





XIV-3層
検出遺構

屋代遺跡群

左: SK5938

出土炭化材

右: SK5938

出土焼骨



XIV-1・2層
検出遺構

中期前葉 2期

左: ⑤b区東壁

XIV-1層

右: ⑥区集落

(北より)



左: ⑥区集落全景

右: SB5401P



左: SB5404

右: SB5408

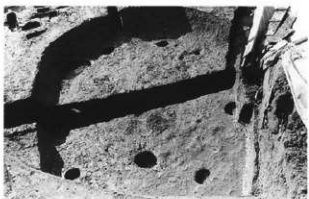
左: SB5412a
右: SB5412a
出土獣骨



左: SB5412a
炉体土器
右: SB5412a
床面炭化材



左: SB5412b
右: SB7501



左: ◎b区調査風景
右: SB7502断面



左: SB7502
右: SB7502
床下検出ピット

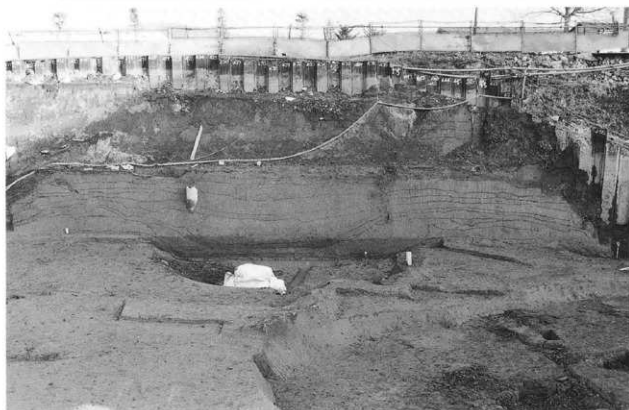




左：SB7502
床下検出ビット
右：SB7502炉断面



右：SB9009



SB9009断面 (開堤)



左：SB9009伊体土器
右：SB9009
埋土出土人骨

左：SB9010
SB9013
右：SB9010印体土器



左：SB9011
床面直上埋葬人骨
右：SB9011
人骨出土状況



左：SB9012
右：SB9014(手筒)



左：SK5915断面
右：SK5932炭化材



左：SK7670
右：SF7038

